

A SURVEY OF DEFENDED ENCLOSURES IN CEREDIGION, 2006: GAZETTEER OF ORDNANCE SURVEY GRID SQUARES SN64, SN65 AND SN66



Paratowyd gan Archaeoleg
Cambria
Ar gyfer Cadw
Prepared by Cambria
Archaeology

ARCHAEOLEG CAMBRIA ARCHAEOLOGY

RHIF YR ADRODDIAD / REPORT NO. 2006/20
RHIF Y PROSIECT / PROJECT RECORD NO. 54269

Mawrth 2006
March 2006

A SURVEY OF DEFENDED ENCLOSURES IN CEREDIGION, 2006: GAZETTEER OF ORDNANCE SURVEY GRID SQUARES SN64, SN65 AND SN66

Gan / By

K Murphy, R Ramsey and M Page

*Archaeoleg Cambria yw enw marchnata Ymddiriedolaeth Archaeolegol Dyfed Cyfyngedig.
Cambria Archaeology is the marketing name of the Dyfed Archaeological Trust Limited.*

Paratowyd yr adroddiad yma at ddefnydd y cwsmer yn unig. Ni dderbynnir cyfrifoldeb gan Archaeoleg Cambria am ei ddefnyddio gan unrhyw berson na phersonau eraill a fydd yn ei ddarllen neu ddibynnu ar y gwybodaeth y mae'n ei gynnwys

The report has been prepared for the specific use of the client. Cambria Archaeology can accept no responsibility for its use by any other person or persons who may read it or rely on the information it contains.



Llywodraeth Cynulliad Cymru
Welsh Assembly Government

ARCHAEOLEG CAMBRIA
Ymddiriedolaeth Archaeolegol Dyfed Cyf
Neuadd y Sir, Stryd Caerfyrddin, Llandeilo, Sir Gaerfyrddin SA19
6AF
Ffon: Ymholiadau Cyffredinol 01558 823121
Adran Rheoli Treftadaeth 01558 823131
Ffacs: 01558 823133
Ebst: cambria@acadat.com Gwefan: www.acadat.com

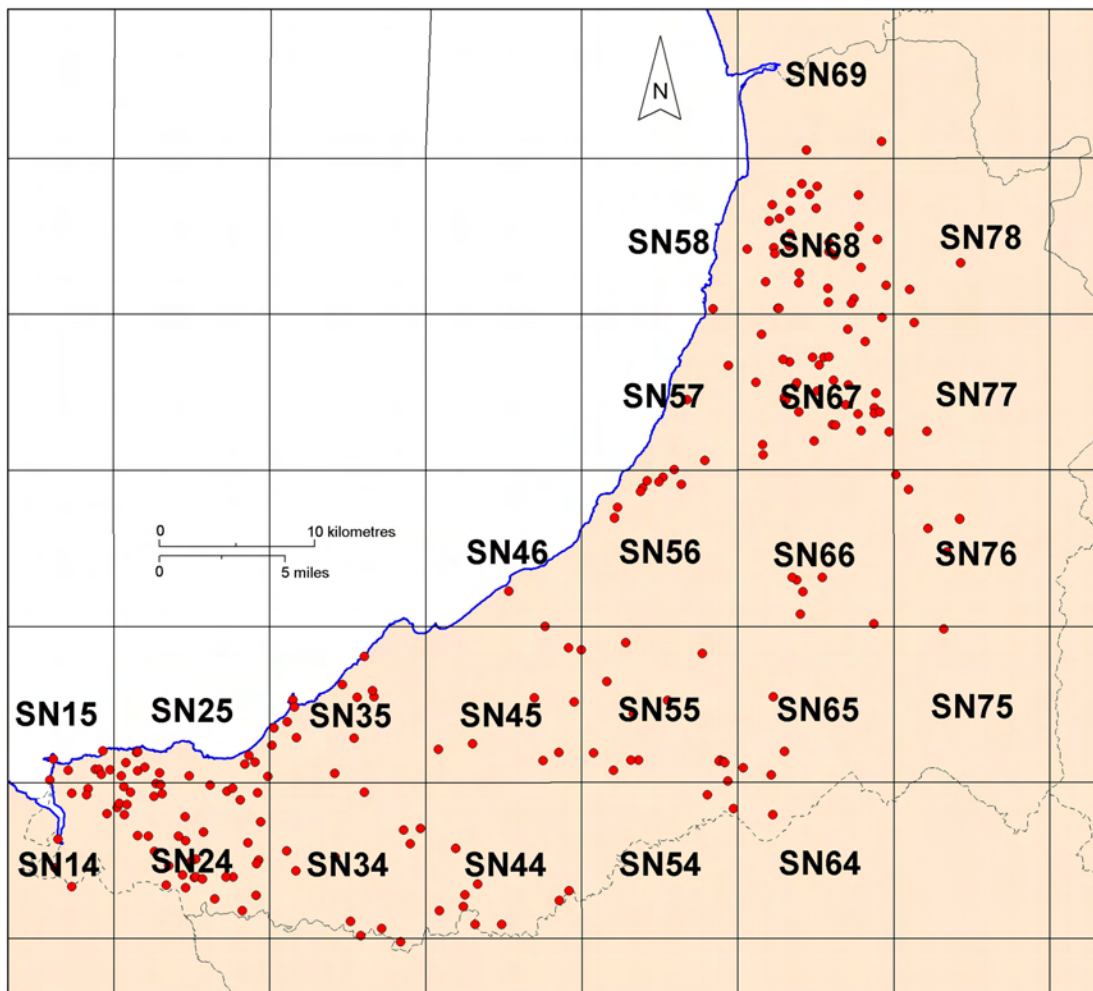
CAMBRIA ARCHAEOLOGY
Dyfed Archaeological Trust Limited
The Shire Hall, Carmarthen Street, Llandeilo, Carmarthenshire
SA19 6AF
Tel: General Enquiries 01558 823121
Heritage Management Section 01558 823131
Fax: 01558 823133
Email: cambria@acadat.com Website: www.acadat.com

Cover: Aerial photograph of Castell Flemish. Cambria Archaeology.

SITE GAZETTEER OF 10KM GRID SQUARES SN64, SN65 AND SN66

For ease of handling the site gazetteers have been arranged into Ordnance Survey 10km grid squares. Each gazetteer consists of one or more 1:50,000 maps showing the overall location of each site followed by the individual entries for each site. Each entry comprises: a printout from the Historic Environment Record, including a site description; a 1:500 map; and where available a ground photograph and an aerial photograph.

Many of the 1:500 maps show details of the site plotted from cropmarks shown on aerial photographs. These plots are supplied by RCAHMW Crown Copyright ©.



Index to the gazetteers of defended enclosures and related sites. Gazetteers are arranged by 10km grid squares.



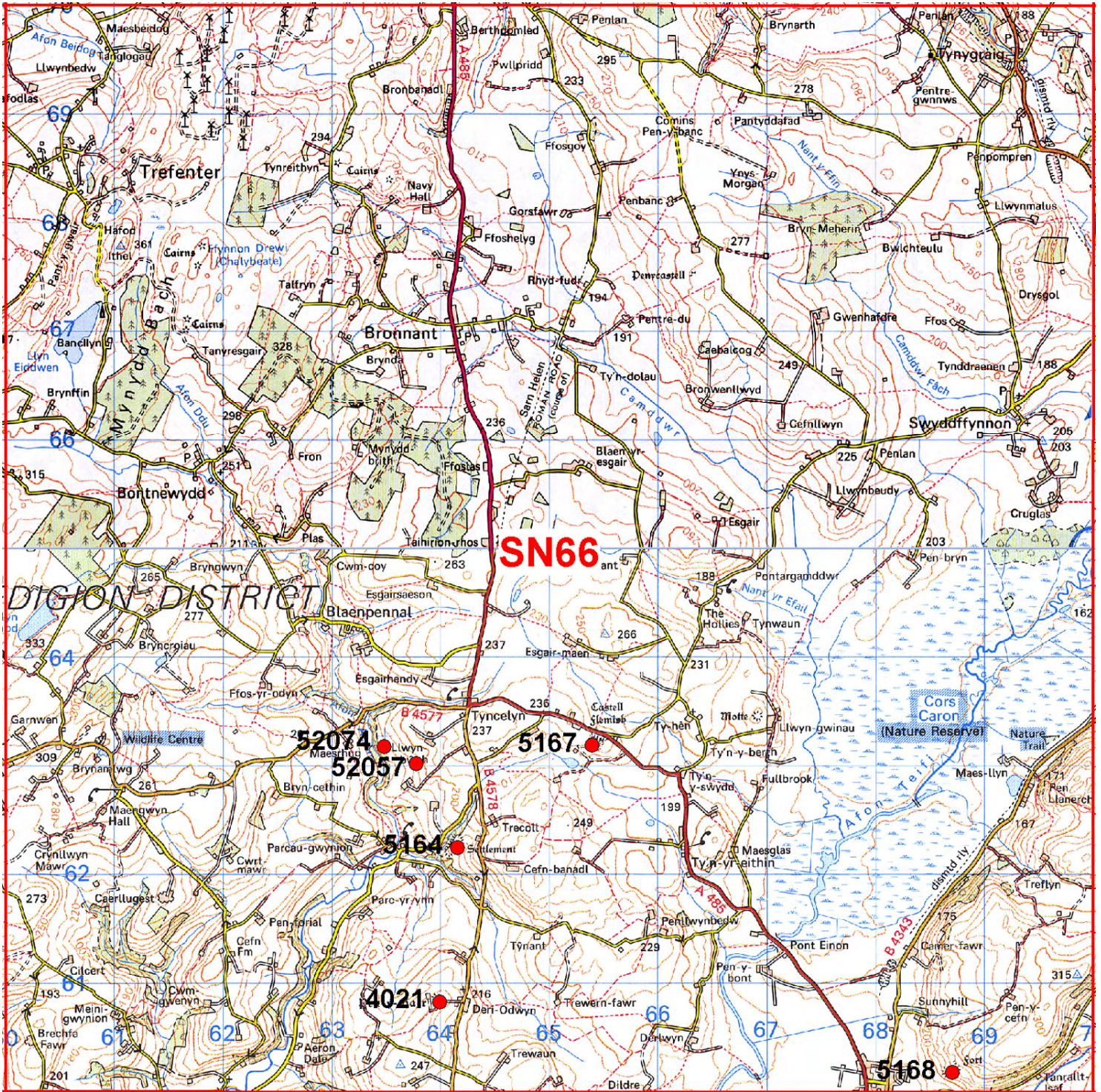
1:50,000 Distribution map of sites in 10km grid square SN64

This map is reproduced from the Ordnance Survey map by the National Assembly for Wales with the permission of The Controller of Her Majesty's Stationery Office. Crown Copyright. All rights reserved. Unauthorised reproduction infringes Crown Copyright and may lead to prosecution and civil proceedings. Licence No. GD 272221



1:50,000 Distribution map of sites in 10km grid square SN65.

This map is reproduced from the Ordnance Survey map by the National Assembly for Wales with the permission of The Controller of Her Majesty's Stationery Office. Crown Copyright. All rights reserved. Unauthorised reproduction infringes Crown Copyright and may lead to prosecution and civil proceedings. Licence No. GD 272221



1:50,000 Distribution map of sites in 10km grid square SN66.

This map is reproduced from the Ordnance Survey map by the National Assembly for Wales with the permission of The Controller of Her Majesty's Stationery Office. Crown Copyright. All rights reserved. Unauthorised reproduction infringes Crown Copyright and may lead to prosecution and civil proceedings. Licence No. GD 272221

1919 CAER CADWGAN

PRN 1919 NGR SN62244795

SITE NAME CAER CADWGAN;CAER MORRICE;GELLI-GAER

SITE TYPE HILLFORT FORM Earthwork

PERIOD Iron Age CONDITION B

SITE STATUS SAM

DESCRIPTION

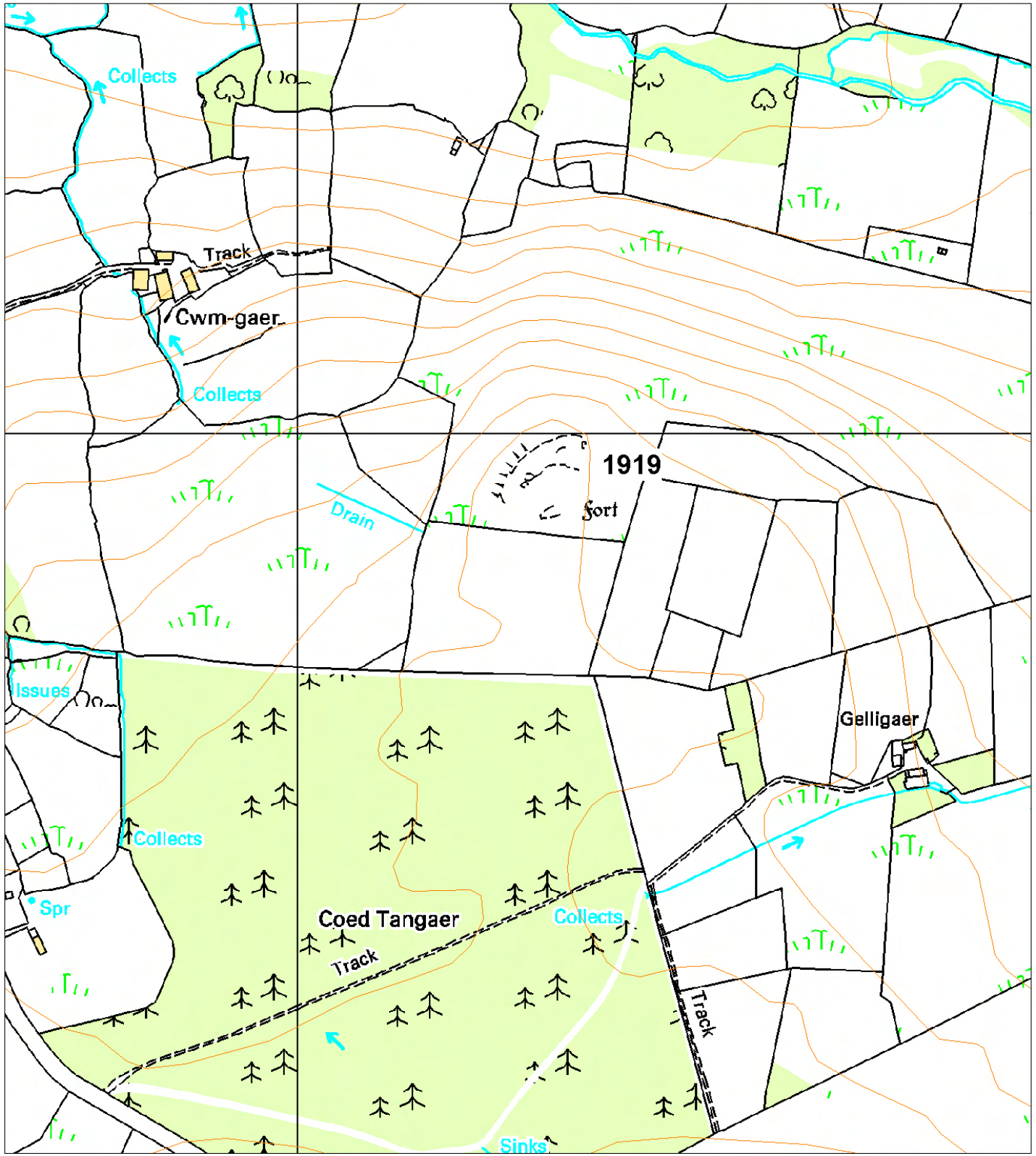
Caer Cadwgan occupies a strong defensive position on the summit of a hill at 290m above sea level. It is a univallate fort, the defences marked by a spread of rubble. An entrance approached by a hollow-way lies on the southwest side, with a second entrance on the northwest side. The roughly oval interior measures 100m southwest - northeast and 64m northwest - southeast, and is divided by a wall. Four semi-circular building platforms lie in the interior. An annexe of c. 0.85ha defined by insubstantial earthworks to east and west and by a stony bank lies to the south and east of the main enclosure.

Excavations by St David's College Lampeter in the 1980s concentrated on the northwest entrance, part of the rampart, and part of the interior.

K Murphy 16 December 2005 - compiled from several sources.



Aerial photograph Cambria Archaeology.



This map is reproduced from the Ordnance Survey map by the National Assembly for Wales with the permission of The Controller of Her Majesty's Stationery Office. Crown Copyright. All rights reserved. Unauthorised reproduction infringes Crown Copyright and may lead to prosecution and civil proceedings. Licence No. GD 272221

Scale: 1:500

4019 CASTELL GOETRE

PRN 4019 NGR SN60325095

SITE NAME CASTELL GOETRE;CASTELL GOEDTREF

SITE TYPE DEFENDED ENCLOSURE FORM Earthwork

PERIOD Iron Age CONDITION B

SITE STATUS SAM

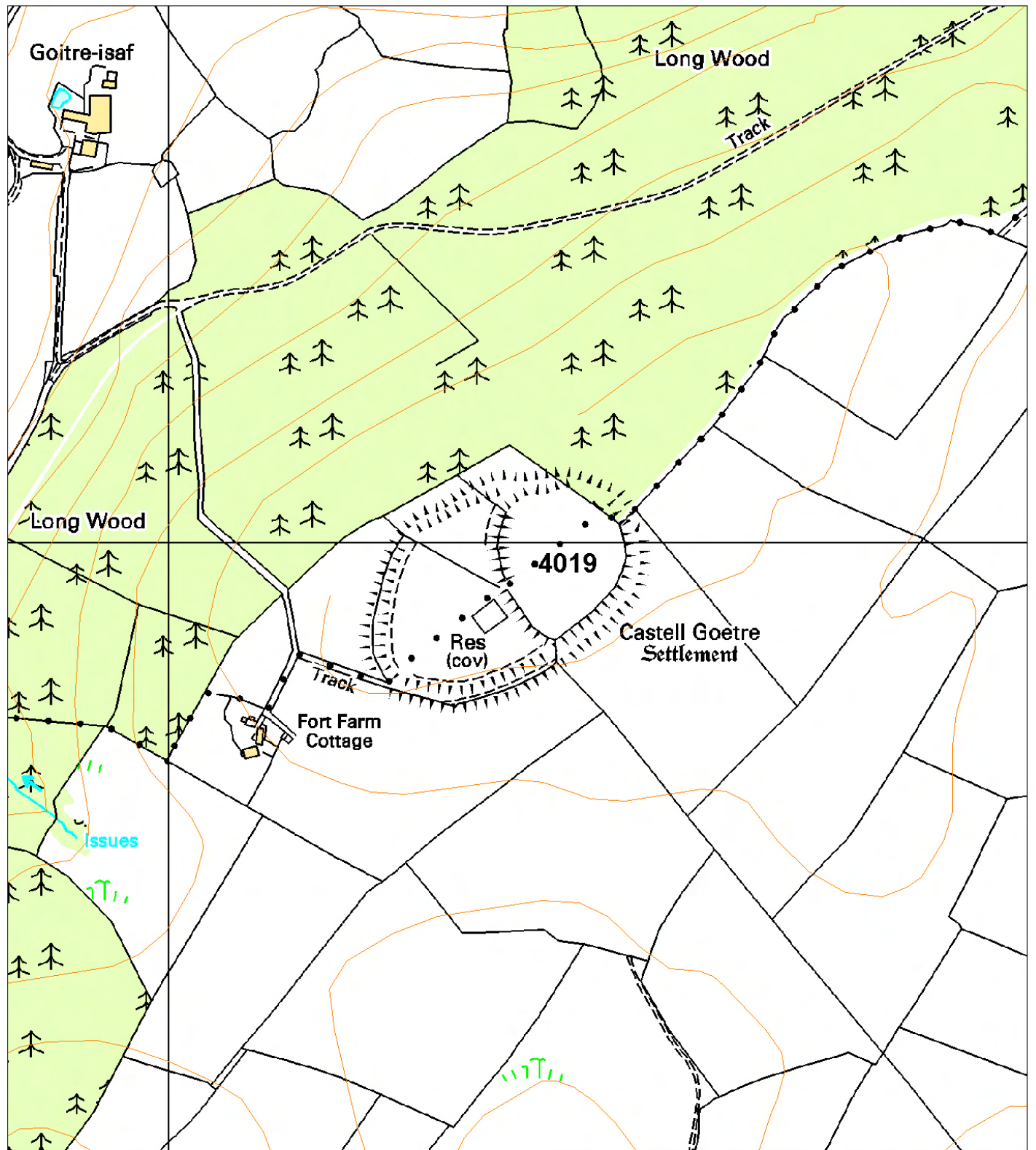
DESCRIPTION

Castell Goetre lies on a broad rounded ridge-top at 230m above sea level. To the west and north of the fort the land slopes steeply away into a valley. The slopes are less steep on other sides. Hogg has interpreted this fort as having two phases. The first phase consists of a roughly circular enclosure approximately 120m across internally, of which only the southwest side now survives as a cross-bank within a much larger oval fort. The remainder of the early defences have been incorporated into the later fort. The surviving bank of this early fort is slight, with an entrance midway along. The later enclosure measures 240m southwest - northeast and up to 150m northwest - southeast and is defined by a bank 10m wide and up to 2.2m above a ditch and a slighter counterscarp bank. The whole system is about 20m wide. On the north side the defences have been reduced to nothing. There is a simple entrance on the southwest end. An alternative interpretation of the earthworks is that the cross-bank represents an internal division. The site is under improved pasture.

K Murphy 16 December 2005 - compiled from various sources.



Aerial photograph Cambria Archaeology.



This map is reproduced from the Ordnance Survey map by the National Assembly for Wales with the permission of The Controller of Her Majesty's Stationery Office. Crown Copyright. All rights reserved. Unauthorised reproduction infringes Crown Copyright and may lead to prosecution and civil proceedings. Licence No. GD 272221

Scale: 1:500

4021 PEN Y GAER

PRN 4021 NGR SN63996083

SITE NAME PEN-Y-GAER

SITE TYPE HILLFORT FORM Earthwork

PERIOD Iron Age CONDITION C

SITE STATUS

DESCRIPTION

Pen-y-Gaer is a defended enclosure or small hillfort located on the northern end of a rounded hilltop or ridge at 240m above sea level. It is a good naturally defensive location with land falling away steeply to the east, north and west. To the south the land is fairly level. The site consists of an oval enclosure approximately 95m north - south and 40m east west defended by a bank - there is no trace of a ditch. On the north side the bank has been incorporated into field boundaries and stands up to 2m high. Elsewhere it has been reduced to a scarp or sharp break of slope. The site of the entrance is unknown. The 1st Ed Ordnance Survey 1:2500 map shows an annexe approximately 60m long attached the south side of the main enclosure, with a possible smaller annexe attached to the north side. The map also shows a possible sub-division within the main enclosure - an earlier phase of defence? There is now no trace of this division or of the annexes. There is an old quarry on the southeast end of the main enclosure. The site is under improved pasture.

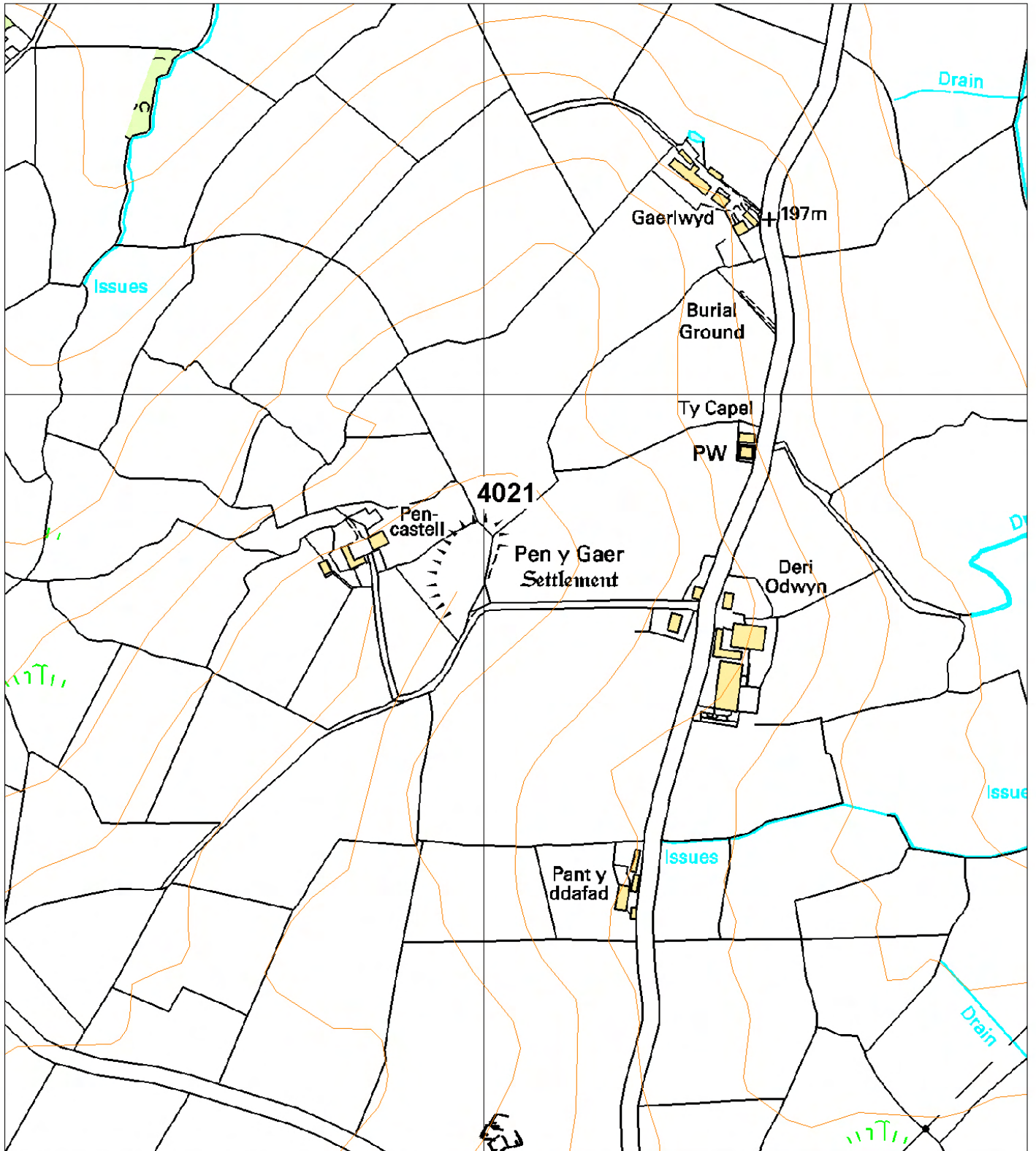
K Murphy and R Ramsey 9 January 2006



Aerial photograph Cambria Archaeology.



Ground photograph looking at surviving earthworks below hedge-bank.



This map is reproduced from the Ordnance Survey map by the National Assembly for Wales with the permission of The Controller of Her Majesty's Stationery Office. Crown Copyright. All rights reserved. Unauthorised reproduction infringes Crown Copyright and may lead to prosecution and civil proceedings. Licence No. GD 272221

Scale: 1:500

5164 TRE-COLL

PRN 5164 NGR SN64156225

SITE NAME TRE-COLL

SITE TYPE DEFENDED ENCLOSURE FORM Earthwork

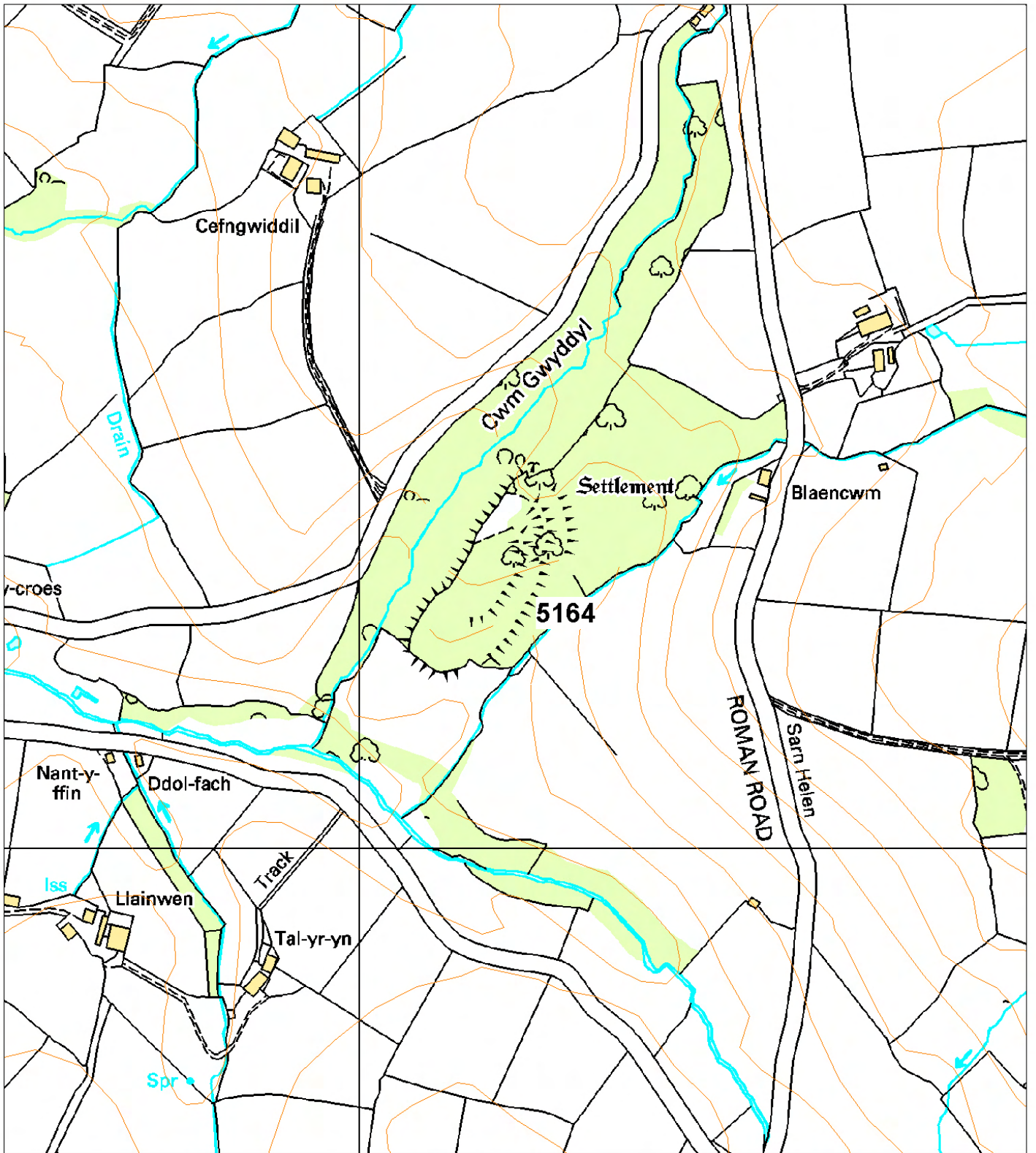
PERIOD Iron Age CONDITION B

SITE STATUS SAM

DESCRIPTION

Tre-coll is an inland promontory fort lying on a naturally well-defended site at 180m above sea level. To the north, south and east land falls away sharply into narrow valleys. The easily approachable side, the northeast, is defended by two large ramparts and a lower bank. The ramparts are each 20m wide and up to 6m - 7m high, and seem to incorporate natural outcrops. Both fade rapidly to the south. The outer bank is less substantial but has a rock-cut ditch. All three terminate in a line on their northwest end defining an entrance c. 30m wide against the steep valley side. Evidence of stone revetments has been noted by T Driver in the banks. The roughly rectangular internal area measures 125m by 50m and slopes down from the entrance area to the southwest. The site is under deciduous woodland.

K Murphy 16 December 2005 - compiled from various sources



This map is reproduced from the Ordnance Survey map by the National Assembly for Wales with the permission of The Controller of Her Majesty's Stationery Office. Crown Copyright. All rights reserved. Unauthorised reproduction infringes Crown Copyright and may lead to prosecution and civil proceedings. Licence No. GD 272221

Scale: 1:500

5167 CASTELL FLEMISH

PRN 5167 NGR SN65396319

SITE NAME CASTELL FFLEMISH

SITE TYPE DEFENDED ENCLOSURE FORM Earthwork

PERIOD Iron Age CONDITION B

SITE STATUS SAM

DESCRIPTION

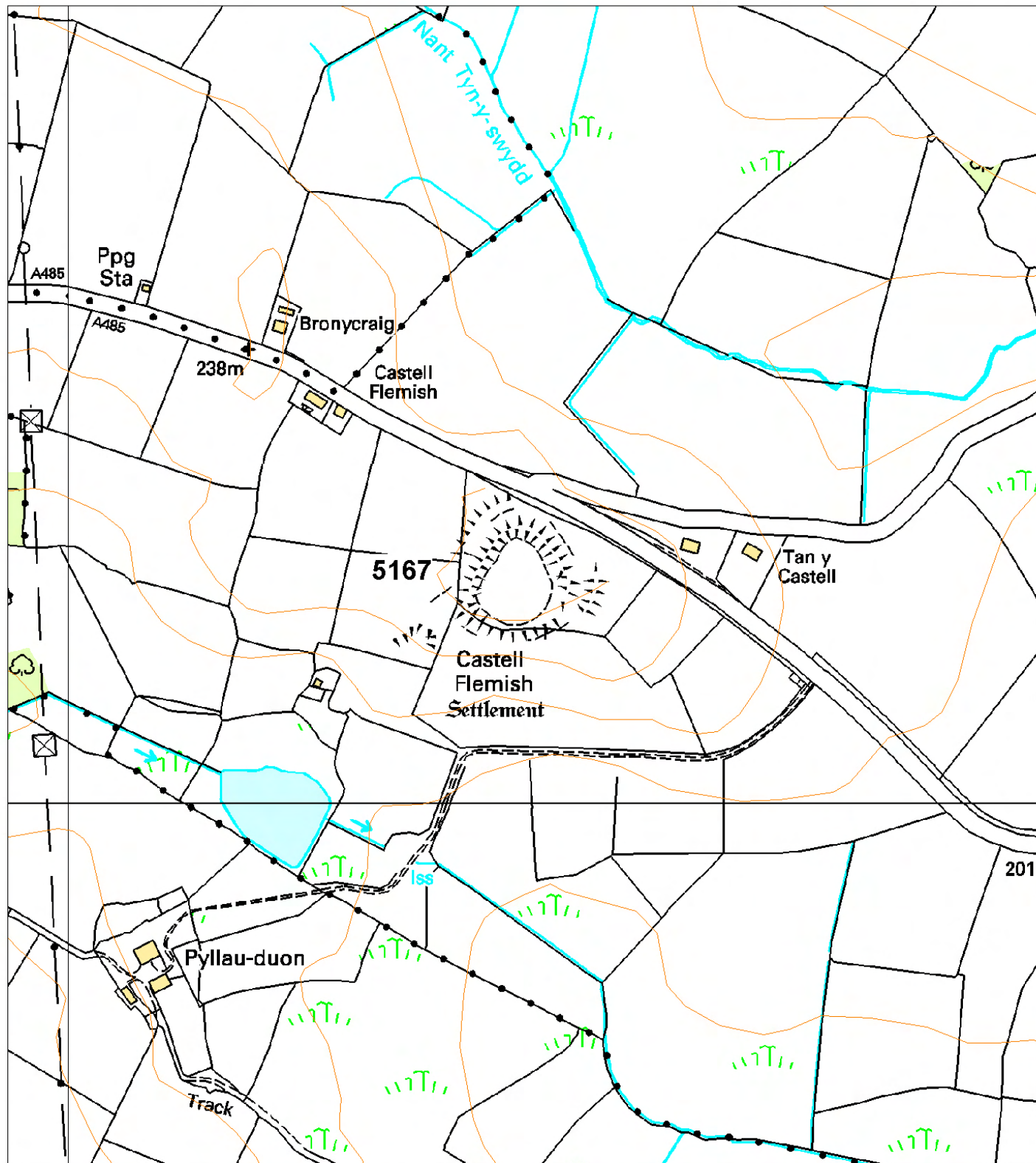
Castell Flemish lies on the summit of a rounded hill at 240m above sea level. It consists of a strong inner, pear-shaped enclosure internally 92m north - south and 75m east - west surrounded by a bank and ditch 3m high overall with a slight counterscarp bank. A slightly in-turned entrance lies on the southeast. A similar shaped larger enclosure lies outside and slightly eccentric to the inner. The defences of this enclosure are slighter. They are widely spaced from the inner defences to the west, but converge with the counterscarp bank to the east. Hogg suggested that these enclosures were of two periods.

The site is mostly under improved pasture with some gorse scrub on the banks. Sheep scrapes are eroding parts of the banks in several locations.

K Murphy 16 December 2005 - compiled from several sources.



Aerial photograph Cambria Archaeology.



This map is reproduced from the Ordnance Survey map by the National Assembly for Wales with the permission of The Controller of Her Majesty's Stationery Office. Crown Copyright. All rights reserved. Unauthorised reproduction infringes Crown Copyright and may lead to prosecution and civil proceedings. Licence No. GD 272221

Scale: 1:500

5168 CASTELL TREGARON

PRN 5168 NGR SN68706018

SITE NAME CASTELL TREGARON;SUNNYHILL CASTELL

SITE TYPE PROMONTORY FORT FORM Earthwork

PERIOD Iron Age CONDITION B

SITE STATUS SAM

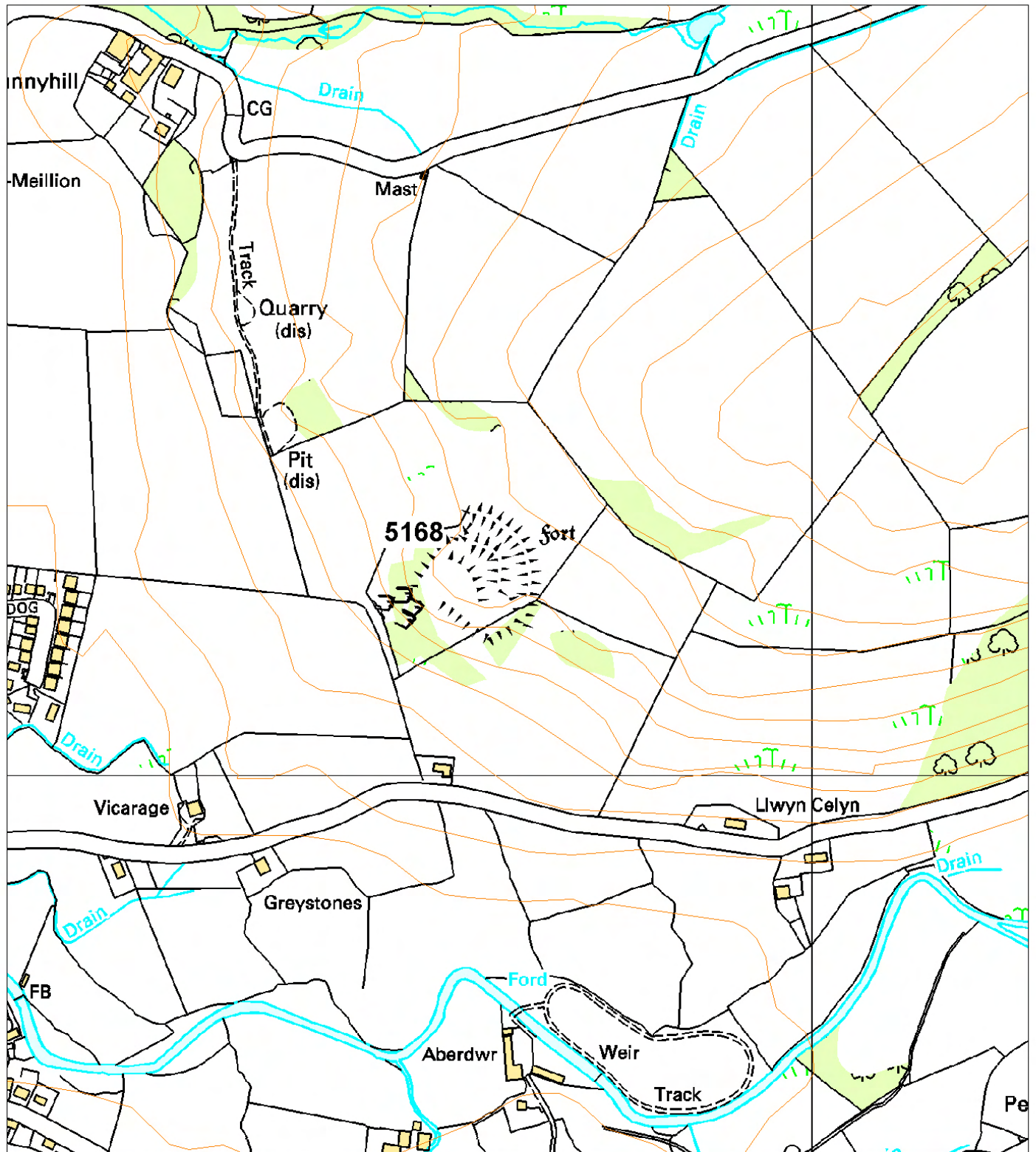
DESCRIPTION

Castell Tregaron is an inland promontory fort lying on a flat rocky spur at 230m above sea level. It is naturally well-defended by steep slopes to the west and south. Two curving ramparts cut off the easily approachable north and east sides. The outer rampart stands to 3m - 4m high and is 20m broad. It probably had a ditch, now silted. The inner rampart is up to 6m high externally and is flanked by a ditch up to 3m deep. Stone revetments are traceable in places on the rampart faces. The entrance through the ramparts is a zig-zag and was originally probably quite complex. The internal area is roughly circular, approximately 80m diameter. Several platforms on the rocky outcrop probably mark the sites of round-houses. The interior is mostly under improved pasture with scrub on the banks.

K Murphy 16 December 2005 - compiled from several sources.



Aerial photograph Cambria Archaeology.



This map is reproduced from the Ordnance Survey map by the National Assembly for Wales with the permission of The Controller of Her Majesty's Stationery Office. Crown Copyright. All rights reserved. Unauthorised reproduction infringes Crown Copyright and may lead to prosecution and civil proceedings. Licence No. GD 272221

Scale: 1:500

11820 OCHR-COED

PRN 11820 NGR SN62255552

SITE NAME OCHR-COED

SITE TYPE DEFENDED ENCLOSURE FORM Earthwork

PERIOD Iron Age CONDITION C

SITE STATUS

DESCRIPTION

On aerial photographs this site shows as a low roughly circular earthwork bank close to the Afon Dulas. It lies at 170m above sea level, on or very close to the flood plain. On the ground it consists of a low bank, c.0.5m high, up to 6m wide and approximately 75m diameter internally, with a gap on the west side. The earthwork is cut by hedge-banks with ditches that drain water from the area, and there are low earthworks and ditches close to the enclosure, which seem to be the result of river action. There is the possibility that this is a natural feature, an ox-bow lake or old meander of the river, but given the regularity of the earthwork and the possible entrance it is probably a defended enclosure, albeit one in an unusual location.

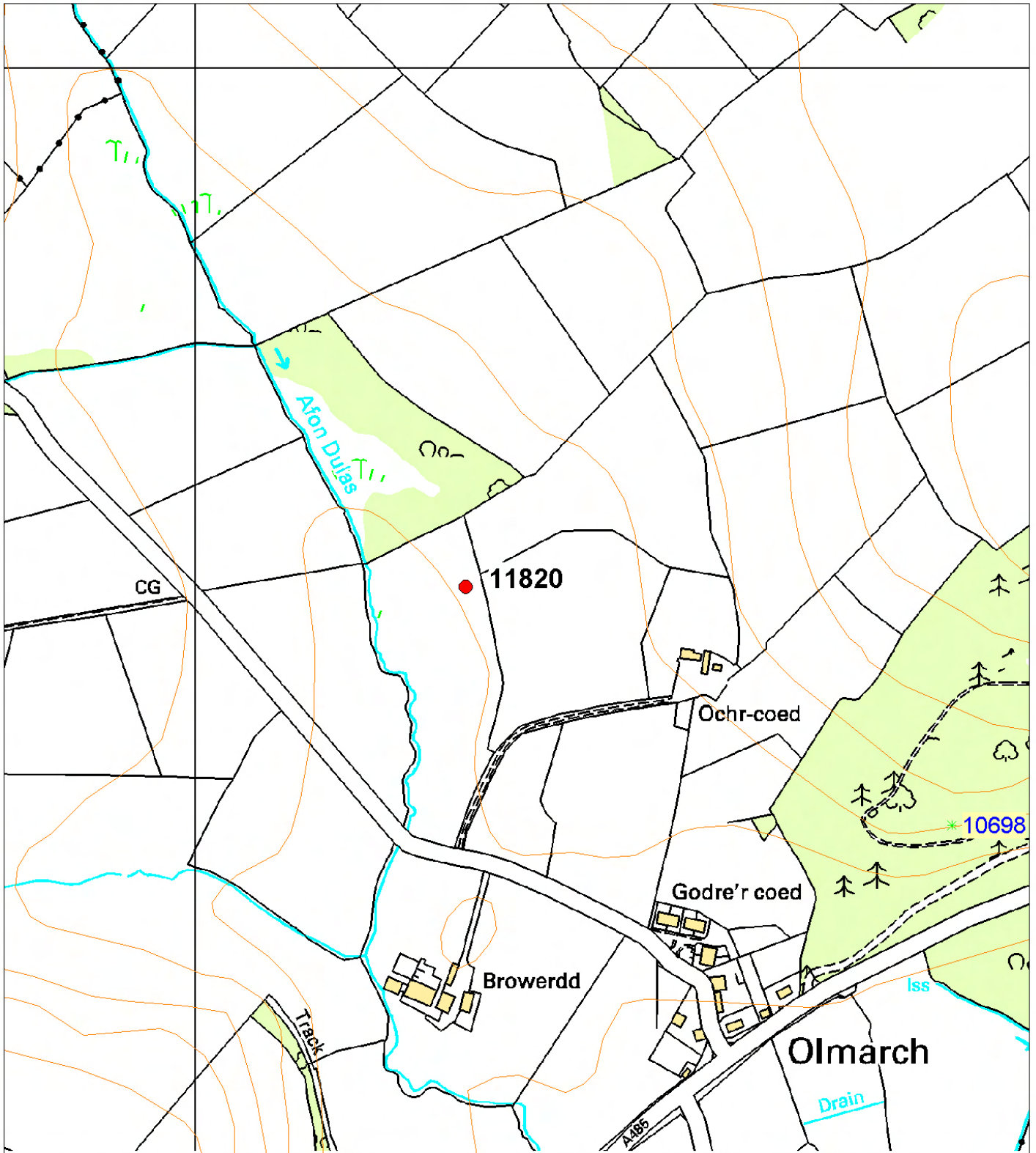
K Murphy and R Ramsey 12 January 2006



Aerial photograph Cambria Archaeology.



Ground photograph looking over site.



This map is reproduced from the Ordnance Survey map by the National Assembly for Wales with the permission of The Controller of Her Majesty's Stationery Office. Crown Copyright. All rights reserved. Unauthorised reproduction infringes Crown Copyright and may lead to prosecution and civil proceedings. Licence No. GD 272221

Scale: 1:500

52057 LLWYN-BWCH

PRN 52057 NGR SN63776302

SITE NAME LLWYN-BWCH SW

SITE TYPE DEFENDED ENCLOSURE FORM Cropmark

PERIOD Iron Age CONDITION D

SITE STATUS

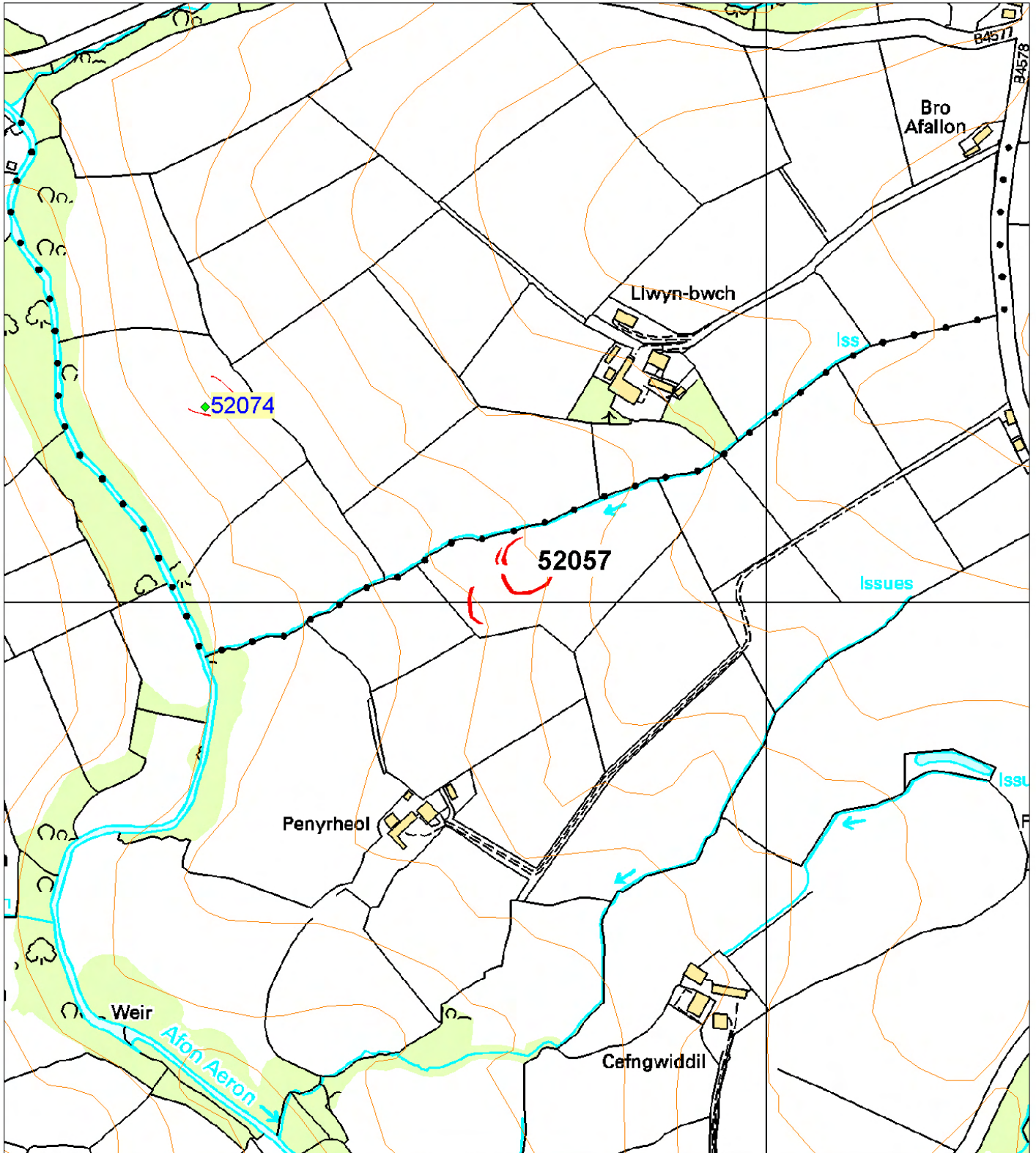
DESCRIPTION

This cropmark defended enclosure lies in improved pasture on a west-facing slope at 190m above sea level. It is a cropmark only, with no earthwork or other surface evidence. Aerial photographs show a roughly circular enclosure, approximately 47m diameter internally, surrounded by a cropmark ditch, with a trace of a second close set concentric ditch on the west side. The entrance, a simple gap in the inner ditch, is located on this side and this second ditch maybe an additional defence close to the entrance. A possible further ditch, c. 35m to the west may defend an annexe, or provide an extra line of defence.

K Murphy and R Ramsey 15 February 2006



Aerial photograph RCAHMW Crown Copyright © reference 2003-5105-56.



This map is reproduced from the Ordnance Survey map by the National Assembly for Wales with the permission of The Controller of Her Majesty's Stationery Office. Crown Copyright. All rights reserved. Unauthorised reproduction infringes Crown Copyright and may lead to prosecution and civil proceedings. Licence No. GD 272221

Scale: 1:500

52068 HEULWEN

PRN 52068 NGR SN62995201

SITE NAME HAULWEN

SITE TYPE DEFENDED ENCLOSURE FORM Cropmark

PERIOD Iron Age CONDITION D

SITE STATUS

DESCRIPTION

On aerial photographs this site shows as segments of cropmark ditches - what seems to be the northern half of a roughly circular defended enclosure approximately 40m diameter internally. A gap in the ditches on the northeast side may indicate an entrance. The cropmarks indicate a bivallate enclosure, with an inner ditch perhaps 4m-6m wide with a slighter but closely set concentric outer ditch. There is no surface evidence for this site in the form of earthworks. It is located in improved pasture on a gentle northwest-facing slope at 145m above sea level, approximately 10m above the floodplain of the Afon Teifi. The cropmark ditch seems to run around the base of a low rise or mound approximately 1m high - it is unclear whether this a constructed mound or whether the ditch makes use of the slight defensive opportunity afforded by the mound.

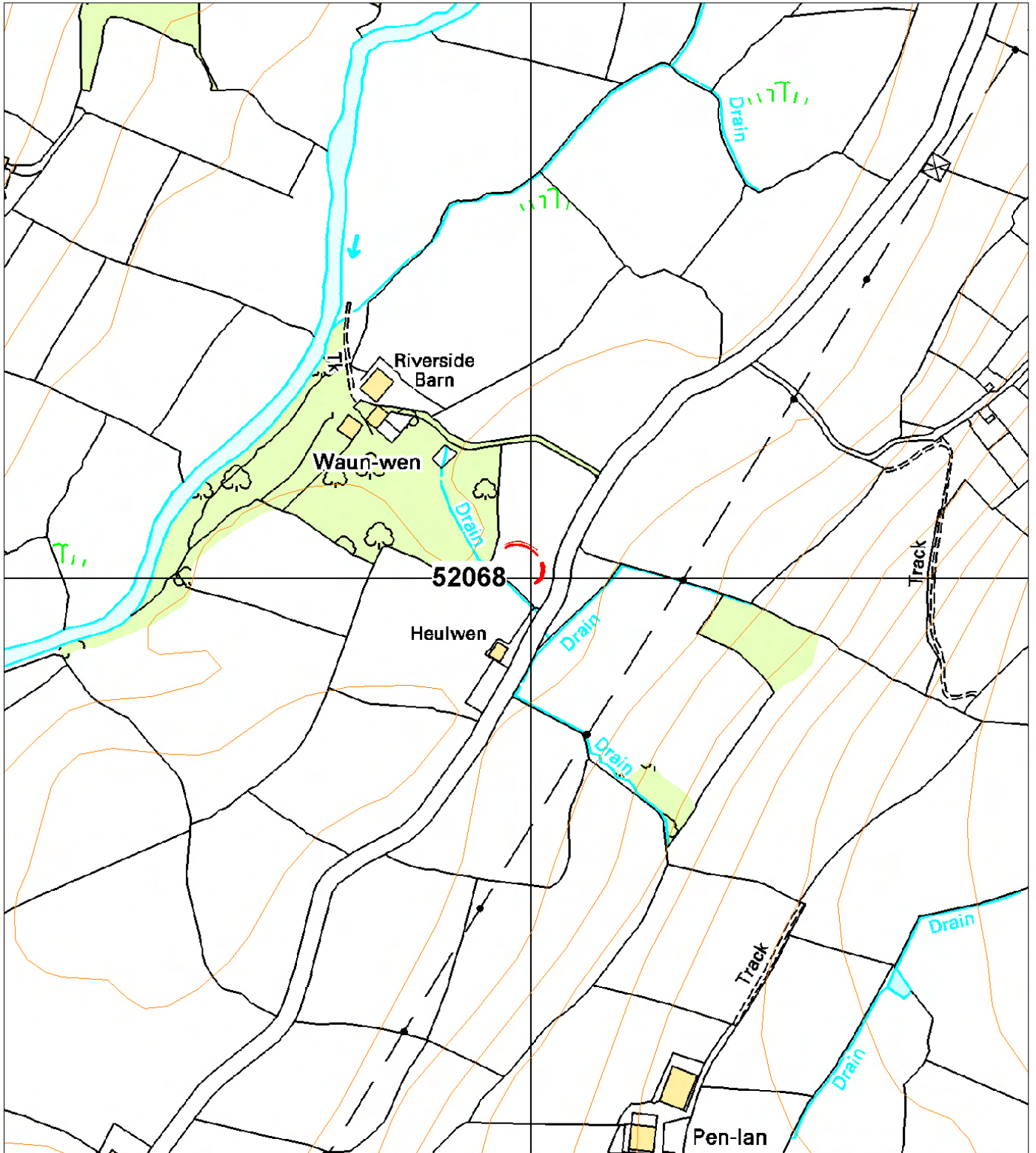
K Murphy and R Ramsey 12 January 2006



Aerial photograph RCAHMW Crown Copyright © reference 955206.



Ground photograph looking over site of cropmark enclosure.



This map is reproduced from the Ordnance Survey map by the National Assembly for Wales with the permission of The Controller of Her Majesty's Stationery Office. Crown Copyright. All rights reserved. Unauthorised reproduction infringes Crown Copyright and may lead to prosecution and civil proceedings. Licence No. GD 272221

Scale: 1:500

52069 PENTRE

PRN 52069 NGR SN62145049

SITE NAME PENTRE

SITE TYPE DEFENDED ENCLOSURE FORM Cropmark

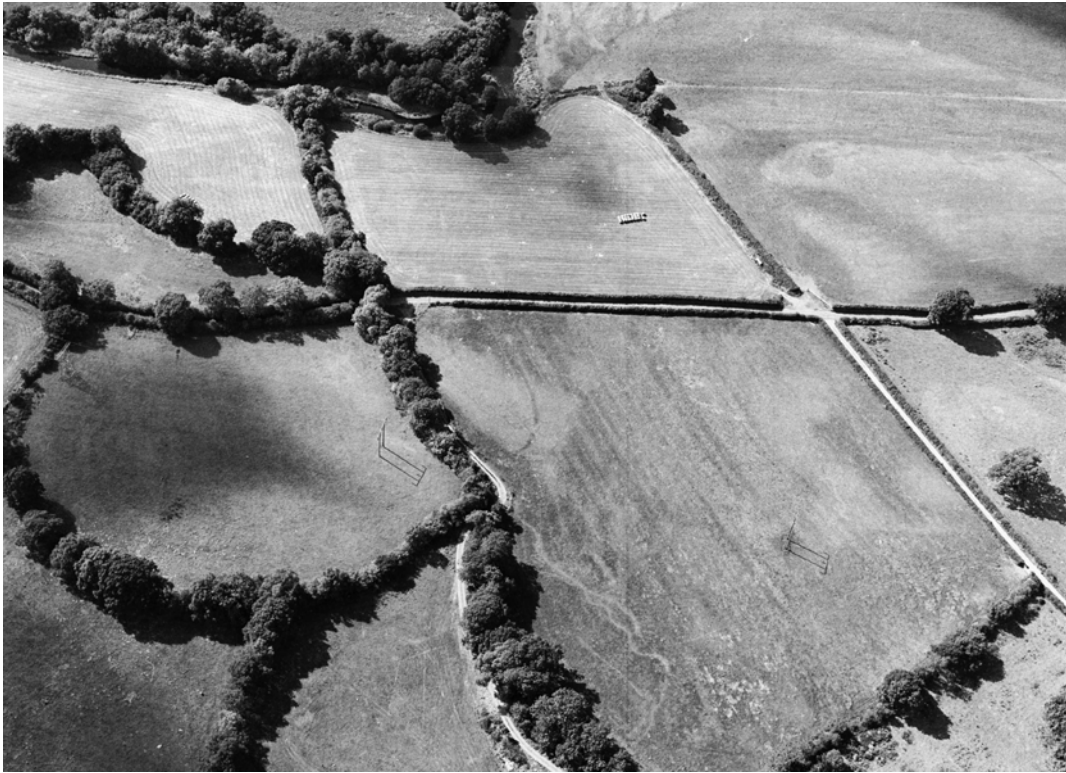
PERIOD Iron Age CONDITION D

SITE STATUS

DESCRIPTION

This enclosure is located on gently sloping ground at 135m above sea level, approximately 10m above the floodplain of the Afon Teifi and close to a tributary stream, which flows on the south side of the site. There is no trace of the enclosure on the ground, although a low mound, up to 1.5m high, marks its location. A cropmark ditch, clearly visible on aerial photographs, seems to run around the base of the mound. The ditch encloses a roughly oval area, 45m east - west and 40m north - south, with a gap in the NE side marking a simple entrance. On the south side the ditch is lost where it runs close to the stream. The site is under improved pasture.

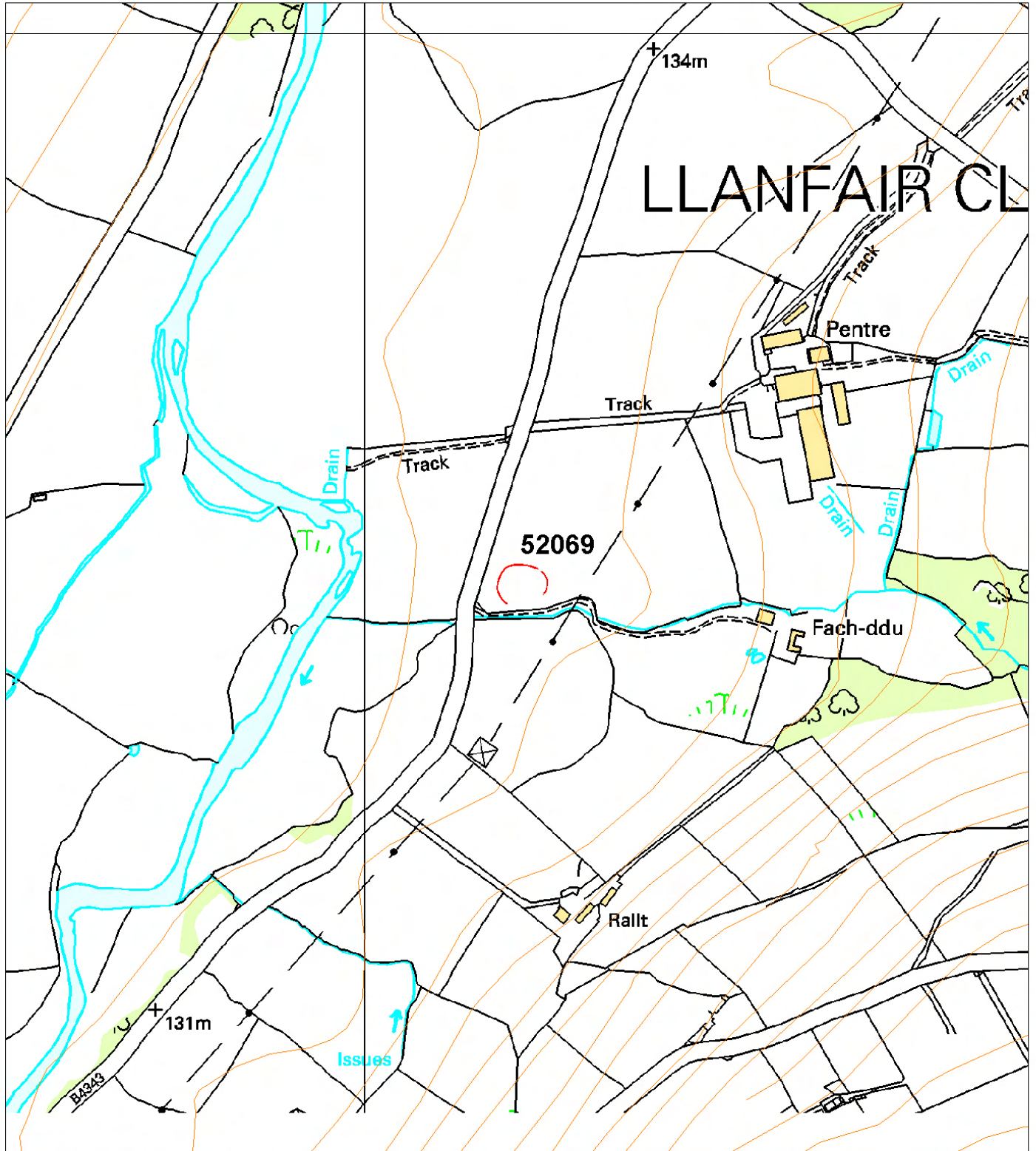
K Murphy and R Ramsey 12 January 2006



Aerial photograph RCAHMW Crown Copyright © reference 955207-48.



Ground photograph looking over site of cropmark enclosure.



This map is reproduced from the Ordnance Survey map by the National Assembly for Wales with the permission of The Controller of Her Majesty's Stationery Office. Crown Copyright. All rights reserved. Unauthorised reproduction infringes Crown Copyright and may lead to prosecution and civil proceedings. Licence No. GD 272221

Scale: 1:500

52074 LLWYN-BWCH

PRN 52074 NGR SN63486318

SITE NAME LLWY-BWCH

SITE TYPE DEFENDED ENCLOSURE FORM Cropmark

PERIOD Iron Age CONDITION D

SITE STATUS

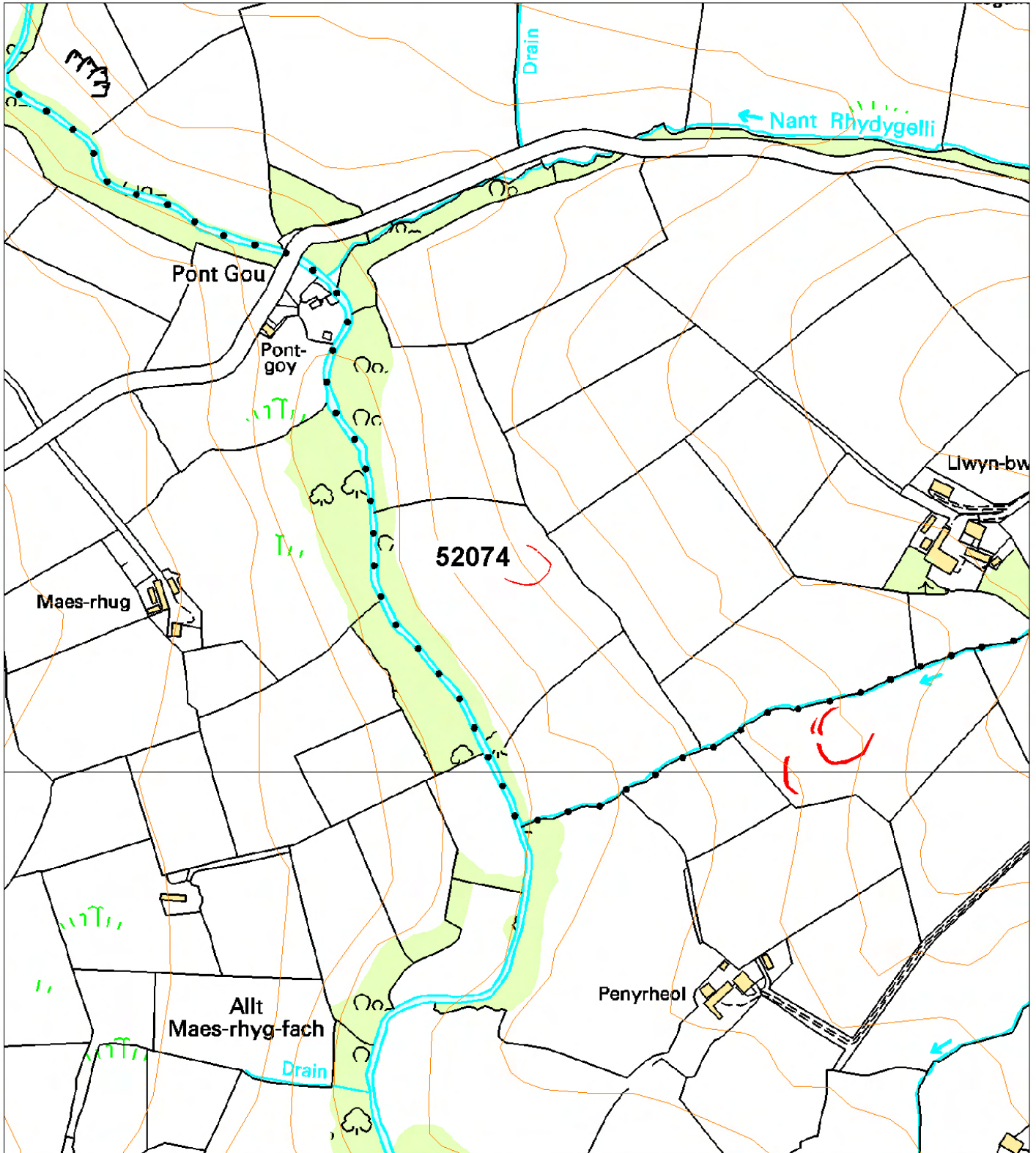
DESCRIPTION

Located on a west-facing slope at 170m above sea level in the Aeron valley, Llwyn-bwch is a cropmark enclosure with no earthwork or other surface evidence. It is under improved pasture. Aerial photographs show a cropmark ditch defining c. 50% (the eastern half) of what is probably a sub-rectangular defended enclosure, approximately 40m across.

K Murphy and R Ramsey 9 January 2006



Ground photograph looking over site of cropmark enclosure.



This map is reproduced from the Ordnance Survey map by the National Assembly for Wales with the permission of The Controller of Her Majesty's Stationery Office. Crown Copyright. All rights reserved. Unauthorised reproduction infringes Crown Copyright and may lead to prosecution and civil proceedings. Licence No. GD 272221

Scale: 1:500

