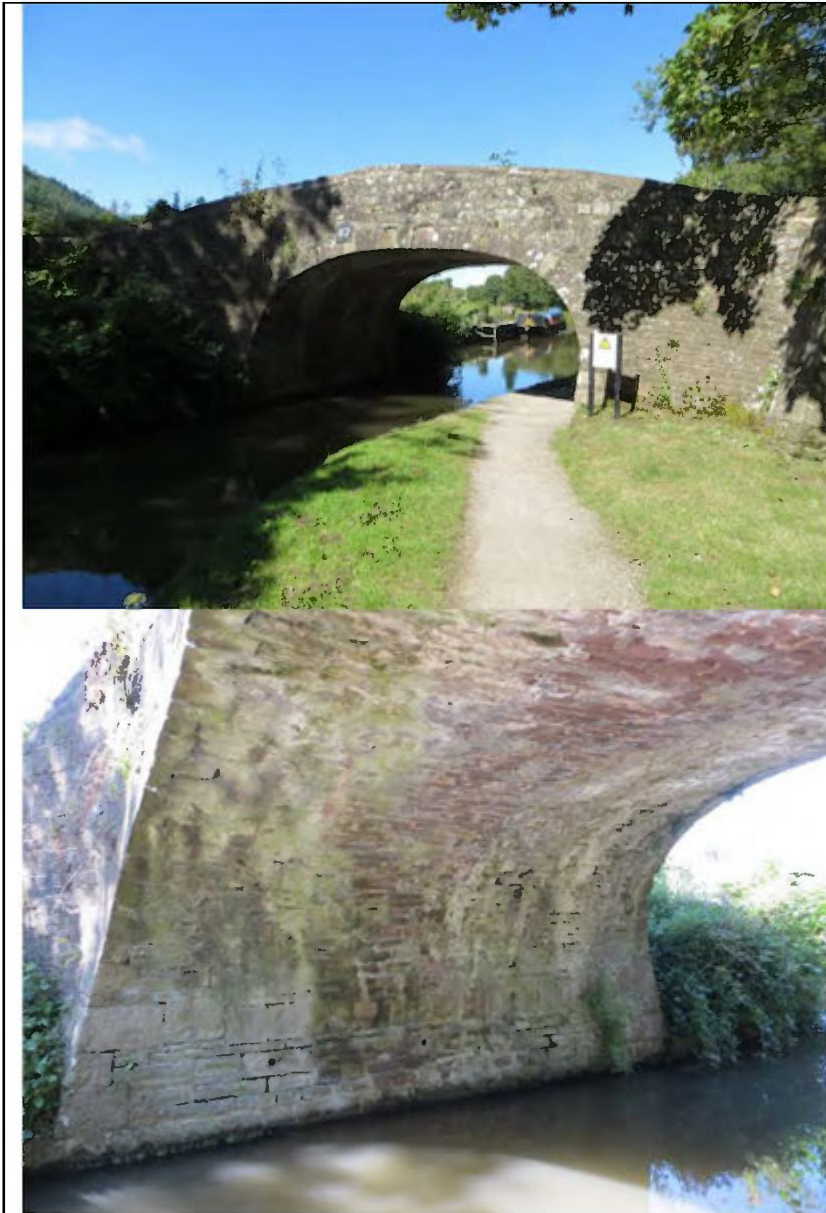
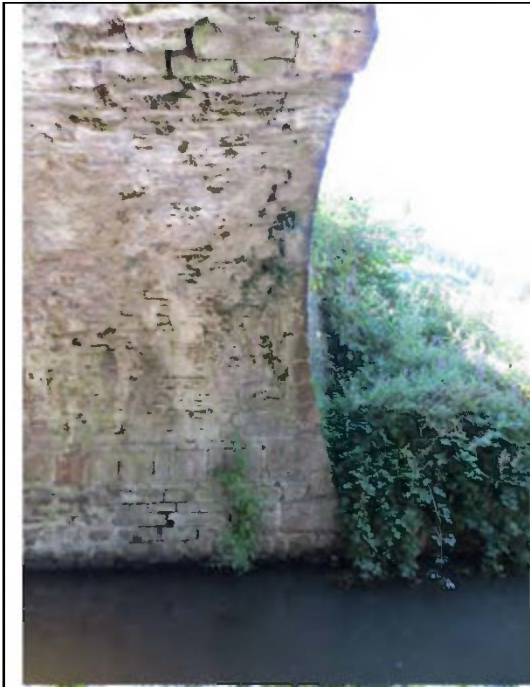


BRECON AND MONMOUTHSHIRE CANAL MONUMENTS RECORD CARD		Monument Number: MB156 LLANFOIST
Monument Name:	Bridge 87 - Popular Bridge	
Map Reference:	330043 209428	
Official Status:	National Park Listed Building, Grade II, Ref. 17647	
<p>Description:</p> <p>Listing Description:</p> <p>Exterior History: The Brecknock and Abergavenny Canal was promoted in 1792 to connect the upper Usk valley to the Monmouthshire Canal at Pontymoile and from there to the sea at Newport. Construction began in 1797, with Thomas Dadford as engineer, and the first section, from Gilwern to Llangynidr was completed in that year with the stretch as far as Brecon following in 1800. Work then stopped for a time with the result that the section to the Blaenavon Road east of Govilon was not completed until 1805, now with Thomas Cartwright as engineer. Further funds had to be raised and the last section from west of Llanfoist to Pontymoile was completed between 1809 and 1812, with William Crosley as engineer. Linked to tramroads, the canal was an important artery for trade in iron, lime and coal. In 1865 the Monmouthshire and the Brecknock and Abergavenny Canal Companies merged becoming the Monmouthshire and Brecon Canal Company. Later still the canal was bought out by the Great Western Railway and gradually the canal was run down until it was finally abandoned in 1962. Restoration work was begun in 1964.</p> <p>Description: This bridge (No 87) lies within the section constructed by William Crosley between 1809 and 1812. Coursed rubble canal bridge, roughly squared, spanning canal and tow-path to east. Segmental arch has keystone and the parapets are curved out with end pilaster buttresses. Included for its special interest as one of the surviving early C19 Brecknock and Abergavenny canal bridges.</p> <p>The bridge measures 5.200m along the towpath</p>		
Images:		







Condition:
Good

References:
Nicholson's guides to the Waterways, vol 3, South-west, p49-55, (n.d.). R A Stevens, Brecknock & Abergavenny and Monmouthshire Canals (Towpath Guide No 2), (Cambridge, 1974), p49-55.

Notes: