

# Oxford Dendrochronology Laboratory

Mill Farm, Mapledurham, South Oxfordshire RG4 7TX  
Telephone: 0118 972 4074, Workshop: 0118 972 3682, Facsimile: 0118 972 4404  
Dr D Miles FSA and Dr M Bridge FSA  
E-mail: [MarBrdg@aol.com](mailto:MarBrdg@aol.com) Homepage: [www.oxford-dendrolab.com](http://www.oxford-dendrolab.com)



**Trefadog, Llanfaethlu, Isle of Anglesey**

This isolated house was visited in March 2011. It is the only known example of full cruck construction on the island, with rare decorative wind-bracing to the roof. There are two bays to the left of the front door, and one to the right. The crucks are made from very large timbers, but unfortunately these had very few rings, being of very fast-grown oak.

It was decided that there were too few rings for dendrochronological dating, but two samples were taken in case it might be possible to carry out radiocarbon dating at a later stage. Sample 01 was taken from the west cruck of the central truss (Fig 1), next to the stairs, and had complete sapwood. Sample 02 was taken from a timber above the door on the east side of the truss (Fig 2).



Figure 1: West cruck of central truss



Figure 2: Timber above door, central truss

The position of the truss sampled is shown in Fig 3. Sample 01 had 57 rings, including 28 sapwood rings, plus the spring vessels of the next year ( $28\frac{1}{4}C$ ), and the series was compared with the dated reference material, but as expected, this short series failed to date.

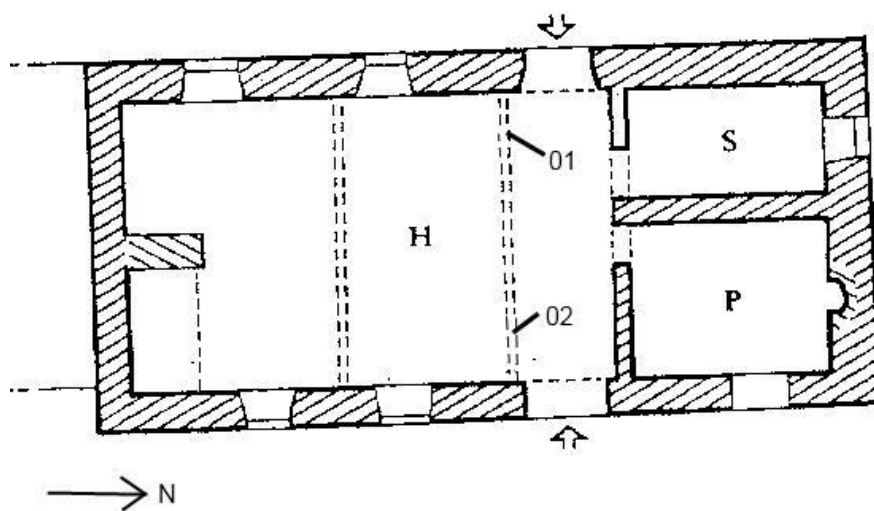


Figure 3: Plan of the house, showing the approximate positions of samples 01 and 02 taken for possible future radiocarbon analysis (adapted from *Houses of the Welsh Countryside*, Peter Smith RCAHMS).