

NORTH WEST WALES DENDROCHRONOLOGY PROJECT 2009-2012

PROSIECT DENDROCHRONOLEG GOGLEDD ORLLEWIN CYMRU

DATING OLD WELSH HOUSES / DYDDIO HEN DAI CYMREIG

Bron Y Foel Isaf, Dyffryn Ardudwy, Gwynedd, LL44 2ZH



ARCHITECTURAL RECORD /COFNOD PENSARNIOL

January 2012

**Peter Thompson
Llwyndu Farmhouse
Llanaber
Barmouth
Gwynedd
LL42 1RR**



Project Data

Job No.	HW-Bronyf- BR19
Building Name	Bron Y Foel Isaf, Dyffryn Ardudwy, Gwynedd
Reference	NGR SH60262459
Job Description.	Building Record
Draft	HW-Bronyf-19-Dr01
Author	Peter Thompson January 2011
Client	North-West Wales Dendrochronology Project
Document Location	M:/HW/2012/Bron Y Foel Report/draft BR019/Bronyf draft.pdf

Peter Thompson
MA., PG Dip HEC
Llwyndu Farmhouse, Llanaber, Barmouth, Gwynedd, LL42 1RR
peterthompson@heritagewales.org.uk
Tel: 01341280144 m: 07912 748367

TABLE OF CONTENTS

	<i>Summary.....</i>	<i>1</i>
1	INTRODUCTION	1
	1.1 Background to the project	2
	1.2 Extent of report.....	2
2	AIMS & OBJECTIVES.....	2
3	METHODOLOGY	3
	3.1 Documentary Research.....	3
	3.2 Historic Building Record.....	3
4	BUILDING RECORD – DESCRIPTION.....	4
	4.1 Exterior.....	4
	4.2 Interior.....	5
5	DENDROCHRONOLOGY.....	10
6	DISCUSSION	
	6.1 Origins & Development.....	10
7	ACKNOWLEDGEMENTS.....	11
8	SOURCES.....	12

APPENDIX: LIST OF PHOTOGRAPHS

LIST OF PHOTOGRAPHS

Plate 1 - Front elevation Bron Y Foel.....	26
Plate 2 - metal casement, front elevation.....	26
Plate 3 - Gable from NE showing latrine block.....	27
Plate 4 - North gable revealing fenestration and the latrine block.....	28
Plate 5 - Latrine block and basement with later door.....	29
Plate 6 - basement window and door.....	29
Plate 7 - North chimney	30
Plate 8 - House and 19th century range of outbuildings.....	30
Plate 9 - East elevation with 19th C range to right.....	31
Plate 10 - Cross passage blocked doorway.....	31
Plate 11 - Hall window with modern casement.....	32
Plate 12 - South gable.....	32
Plate 13 - door post south screen remnant. Moulding typical of 16th C.....	33
Plate 14 - later staircase and entrance to basement.....	33
Plate 15 - Part of passage screen. Service room.....	34
Plate 16 - Main beam over screen, chamfer & stop. No Mortise.....	34
Plate 17 - Latrine or garderobe.....	35
Plate 18 -Latrine - light and ventilation.....	35
Plate 19 - Latrine chute directly over stream.....	35
Plate 20 - Basement - external door, remodelled doorway south gable.....	36
Plate 21 Basement -south end of main beam. Chamfer & stop just visible and fully located in wall with later supporting pillar underneath to the left.	36
Plate 22 - Blocked cross passage door. This doorway appears to have been reduced in size leaving a small window, which can be see has been filled in roughly with stones.....	37
Plate 23 - In this image an oak frame is clearly seen, including head and the plaster can be seen applied to the reduced doorway.....	37
Plate 24 - Hall, fireplace and stair.....	38
Plate 25 - Portion of the of the first floor ceiling.....	38
Plate 26 - Timber framed partition with doors to stairs.....	39
Plate 27 - Wattle and daub screen.....	39
Plate 28 - First floor fireplace, latrine door.....	40
Plate 29 - 18th - early 19th C inserted staircase.....	40
Plate 30 - Truss 1 with truss 2 beyond looking from the south.....	41
Plate 31 - Purlins scarf jointed with raking strut support below. Note scorch marks.....	41
Plate 32 - Truss 2 from the south.....	42
Plate 33 - Truss 3 from the south.....	42
Plate 34 - Truss 3 east from the north.....	43
Plate 35 - mortise on principal rafter truss 2.....	43
Plate 36 - Truss 2 collar door head.....	43

Drawings

Figure 1 - Location Bron y Foel.....	14
Figure 2 - Location Dyffryn Ardudwy OS End User.....	14
Figure 3 - Aerial map of Bron Y Foel.....	15
Figure 4 – Ground floor Plan.....	16
Figure 5 – Basement.....	17
Figure 6 – Screen	18
Figure 7 – First Floor.....	19
Figure 8 – Loft.....	20
Figure 9 Section AA – Truss 1.....	21
Figure 10 – Section BB – Truss 2.....	22
Figure 11 – Section CC – Truss 3.....	23
Figure 12 – Apotropaic Marks.....	24

Bron y Foel Isaf

Dyffryn Ardudwy, Gwynedd, LL44 2HZ

Standing Building Record

Summary

Bron y Foel Isaf is located near the village of Dyffryn Ardudwy in the parish of Llanenddwyn, Gwynedd. It is centred at NGR SH 60262459. It is placed on the Statutory List of Buildings of Architectural or Historic Interest and listed Grade II. It is located on the National Monument record of Wales PRN 28204. A recording of the buildings was made in December 2011 and January 2012 as part of the North-West Wales Dendrochronological Project (NWWWD). The record formed part of an individual survey that was determined by dendrochronological sampling and analysis which established an initial construction phase of **1588-1614** but with later adaptation. Bron y Foel Isaf originated as a substantial storeyed house with gable chimneys, consisting of a 4 bay roof divided by three trusses. The outer trusses consisted of principal rafters with raking struts while the central truss is in the form of an A frame with collar run round internal faces with mortises to accept a boarded partition. The ground floor was initially divided into typical accommodation of hall, cross passage and service or store room. A basement sits below passage and service room.*

A remarkable latrine block exits from the service room and rises to two storeys and is placed to evacuate waste over a small stream. The latrine block is unique in this part of Wales and gives rise to the idea that the influence for its construction came from elsewhere and particularly the buildings at the St. Cross in Winchester. The dendrochronological result does not support this, however.

The first floor is most notable for its height, measured at just over 3m, and its framed and counter-changing pattern of chamfered beams and joists is very impressive in a building of this type. If conceived as a single room it is possible this room had some formal function but this is conjectural without further evidence. A second latrine exits from first floor chamber.

The habitable loft is commodious and was divided into two large areas, divided by a boarded partition fitted into mortise grooves in an A frame. The partition has now gone although some boards have been held in position with nailed battens above the collar horizontally.

There are two apparent phases of building. The primary phase saw the construction of hall and service room from the ground floor and the evidence suggests the latrine block is primary. This primary phase was altered by a change to the circulation within the building by inserting a dog leg staircase within the cross passage space and the partitioning of the first floor to provide 4 rooms sometime in the late 18th or 19th century. It would appear that the cross passage doorway E was blocked with a window being formed and this window was later blocked when the staircase was inserted and the Chamber on the first floor was altered to provide separate accommodation.

1 INTRODUCTION

1.1.1 Background to the project

1.1.2 Bron y Feol Isaf, Gwynedd was recorded in November/December 2011 as part of the North West Wales Dendrochronology Project and undertaken in partnership with the Royal Commission on Ancient & Historic Monuments Wales.

1.1.3 Bron y Foel Isaf is located on the outskirts north east of the village of Dyffryn Ardudwy, Gwynedd east of the A496 on an unclassified lane leading to track across open fields (E) NGR SH 60262459

1.1.4 Bron y Foel Isaf is included on the Statutory List of Buildings of Special Architectural or Historic Interest at Grade II* (Cadw ID 20278). It is also included on the National Monuments Records of Wales (NMRW PRN 28204).

1.1.5 This standing building record was requested after dendrochronological sampling and analysis was undertaken by Mr. Martin Bridge of the Oxford Dendrochronological Laboratory. This was successful and has been reported (Bridge, 2011; see section 5)

1.2 Extent of Report

1.2.1 The following report gives the results of the building survey and has been prepared in accordance with *English Heritage guidelines as published in Understanding Historic Buildings: A Guide to Good Recording Practice* (EH 2006) and the Association of Local Government Archaeological Officers' *Analysis & Recording for the Conservation and Control of Works to Historic Building* (ALGAO, 1997).

1.2.2 Report prepared based upon research and survey correct in December 2011/ January, 2012

2 AIMS AND OBJECTIVES

2.1 The objective of the historic building record, as per the design brief, was to produce a measured drawing, photographic record and a written record to supplement the dendrochronological survey.

3 METHODOLOGY

3.1 Documentary Research

3.1.1 The brief requires that the individual buildings are assessed and documented by a number of project 'partners' which includes documentary research by volunteers of the NWWDP. The building recording is an activity independent of the documentary research. However, reference may be made to known sources where relevant.

3.2 Historic Building Record

3.2.1 The requirement was to provide the report based on an examination of both the exterior and interior of the building and the production of measured drawings, photographic and written data.

The measured drawings.

3.2.2 A measured plan of the site was produced for the basement, ground floor, first floor and loft at a scale of 1:50. Reduced to A4. Measurement was by tape and laser measurer. Cross sections of the building at each truss were also prepared. Drawing of oak screen to scale 1:25. Reference was also made to archive material and plans held at the RCAHM Wales and St. Cross Hospital, Winchester.

Photographic Record

3.2.3 Images were captured on a Nikon D2X digital single-lens reflex camera giving 10mega pixel RAW files. A Nikon P7000 was also used. Photography was to the standard of a Level 3 survey defined by English Heritage (2006,14). The record comprises exterior and interior images as follows

General images of elevations and features exterior and interior rooms

Detail images of architectural features of note exterior and interior both constructional and decorative.

A scale divided into 500cm sections is used in a number of photographs. Photographs are listed with all relevant photographic data as well as subject, orientation, photographer and date. A List of images is included APPENDIX A. A copy of digital images prepared in JPEG format is included in a CD at the back of the report. TIFF images are available.

Written Record

3.2.4 To complete the drawing and photographic records, a written description detailing features, use and changes to the building plus a brief discussion and this follows below.

4 **BUILDING RECORD - DESCRIPTION**4.1 **Exterior**

4.1.1 The main and primary phase of Bron Y Foel Isaf stands on a single rectangular plan form running north to south. The building stands on undulating ground falling gently east to west but rising to north and south. The construction is of roughly coursed rubble stone with partially dressed quoins, and comprises a building of three floors plus a basement. Prominent gable chimneys, of coursed stone, north and south and a continuous pitched roof with a mixture of slating but of even size and coursing but of later date. The original building layout was of a typical and rather simple ground floor of hall with large fireplace (S), cross passage and end service room beyond (N), now commonly referred to as Snowdonia House

4.1.2 The (W) elevation (**Plate 1**) has been rendered and it is not now possible to discern alterations. However, the walling sits on top of a level plinth of larger, rougher boulders that run to the south of the doorway but not so discernible to the left and width of the building. The elevation nevertheless reveals its origin as a sub-medieval building of standard type. The front door opposes a blocked doorway in the rear (E) elevation to form the typical cross passage, situated between the service end to the left and the hall to right. The doorway was blocked, first to form a window which was in turn completely blocked when the later stairway was inserted. It is stated in the NMR that the doorways had cyclopean door heads (shaped arch from one piece of stone) but the front doorway is now re-rendered, covering the lintel, and the rear, east, blocked doorway actually displays a flat lintel.

The front façade has been altered with the insertion of later sash windows, the central first floor window now being slightly enlarged, with a metal casement window (**Plate 2**) replacing a sash window according to photographs in the possession of the owner. It is possible that the first floor window was a later insertion but this is conjectural. The positions suggests the windows replaced earlier mullion windows. Windows may have been introduced to light the rooms once the partitioning was inserted in the first floor.

A window lights the hall and service room at GF level and three windows light first floor level. To the extreme left (N) a two storey latrine block with a pitched slate roof falling from front eave height. (**Plates 3,4,5,6**) The block abuts the gable and is lit on both floors by a small oak mullion window with frame still *in situ* but the mullions themselves have gone, leaving only the frame and mortises. The remainder of the north gable is pierced by a number of openings which leave a notable impression. Two simple openings light the loft either side of the chimney. A window at first floor and a further window at ground floor level, both probably enlarged. To light and access the basement there is a further window and a door, all with later timber. The shallow stream that runs under the latrine block still flows and stone steps, now overgrown and rough, lead down to the basement entrance and the latrine chutes are clear and unblocked to their respective floors.

4.1.3 The roof has two gable end chimneys. To the left, N gable, a large square stack of dressed masonry rises from the gable and has simple bands to produce a decorative moulding at the top. (**Plate7**) This chimney serves a fireplace in the first floor chamber. The

right (S) stack has a narrower banding, part perhaps missing, but is of similar dimension and rises from a ground floor hall fireplace. There are only two heated spaces in the house, the hall and the large first floor chamber.

4.1.4 The N gable is joined to the east by a small masonry link that extends to a single storey range constructed probably in the 19th century. **(Plate 8)**

4.1.5 The eastern elevation, continuing south from the link forms the rear of the building and the stonework is exposed and pointed with relatively modern cement mortar **(Plate 9)**. The opening for the blocked opposing cross passage doorway is evident from the flat lintel and shadow of the former doorway **(Plate 10)**. There are three windows of varying sizes lighting the first floor with the smallest lighting the later stairs. A further window, with modern timber casement lights the hall on the ground floor **(Plate 11)**.

4.1.6 The plain south gable is pierced with six windows. Two light the loft area in the same fashion as the north gable and there are two windows that light the stone (and timber) staircase to the right. The two windows to the ground and first floor (W) appear to be insertions or enlargements of earlier windows. All have later, modern casements or fixed glazing **(Plate 12)**.

4.2 Interior

4.2.1 The roof is divided into 4 bays by three roof trusses. The interior is now divided into a basement, ground, first and second floors. The ground floor **[GF1]** is divided into a hall or kitchen, with stone stairs off to left with doorway, cross passage and service room with a latrine or garderobe off. The first floor was originally one large chamber **[FF1]** but is now divided into four rooms by early 19th century partitioning. Evidence of the four bays is only apparent when viewing the trusses in the loft or attic.

4.2.2 Passing through the W door we enter the cross passage. **[GF1]** The screen partition to the right (S) has been re-constructed and plastered. The doorway to this screen may not be in its original position and has been altered to facilitate the enclosure of the entrance to the basement. The right door jamb, incomplete, with scratch moulding, (plate13) may be an original fragment with the rest being later. The staircase then occupies the position of this portion of screen, re-using planking from the former screen and fixed to later studwork. A dogleg staircase with half landing stair winds behind this enclosure **(Plate 14)**. The screen to the left of passage, also plastered on the passage side, can be seen from **[GF2]** with post and panels of fairly uniform dimensions **(Plate 15) (Figure6)** remaining to view. This section appears to be un-reconstructed and probably original. Located into a frame as a push fit. There is no mortise in the overhead beam (Plate 16).

4.2.3 The room **[GF2]** was a service or store room. It is lit by a small sash window (W), an enlarged window in the gable and a doorway (E) has replaced a possible former window in the E elevation. This leads to a small room off formed within a connecting link to other buildings constructed in the 19th century. The ceiling is a single run of joists located on the

principal beam above the partition screen, which displays a 70mm chamfer, stepped, curved, run out as stops. **(Plate 16)** and a beam of 300mm square with 70mm chamfer with similar stops placed against the gable wall (N). Joists have small, plain chamfers with simple stops.

The latrine or garderobe is a simple cubicle formed in the two storey lean-to and is constructed in stone and plastered internally **(Plate 17)**. The chute is of a simple square construction of unsmoothed masonry with the exit dropping into a small diverted stream (plates 19). The latrine room is lit by a mullion window that still retains the oak frame but the central mullion is now gone **(plate 18)**. This window provided the ventilation for the latrine. The chute for the first floor latrine is concealed in the masonry constructed to left.

4.2.4 The basement **[GF3]** is interesting in its apparent development. A primary construction seems established with an exterior doorway and window in the north gable. Internally, the doorway is of poor construction with no quoins immediately obvious. However, this doorway has been added to at some stage with further masonry and the small stones used on the inner reveals may be some form of repair or addition to support a lintel as the earlier stonework is visible beneath on closer inspection. This lintel in turns supports the main beam in a less than ideal manner and the masonry on this wall generally displays adjustment **(Plate 20)**. The proximity of this doorway to falling waste from the latrine is an interesting design concept! There is no sign of what the room might have been used for but was possibly a dairy. The large timber beam supporting the floor is, in common with the other principal beams in the house, of 300mm and also displays a 70mm chamfer and stop as elsewhere in the building. The southern end of this beam, while built into the masonry appear to have had further support added in the form of a pillar **(Plate 21)**. Chamfered joists with stops display a superior reference to detail in such a room. The date of c1576, obtained for the main beam is earlier than the rest of the building and has led to the suggestion (Bridge, 2011) that the basement possibly predates the building above. This is a possibility and there is disturbance of masonry on the internal north wall and additional support provided for the main beam on the south wall in the form of a pillar so this idea may warrant further investigation if the opportunity arises. A cobble floor under varying levels of water made inspection of this room interesting.

The steps from the basement into the house are interesting for a number of reasons. Constructed of slate and stone they wind up to the ground floor where they are enclosed by a fabricated cubicle from re-used timber to enter the hall side of the partition. Some of this re-used timber is clearly from an earlier partition, included some jointed framing. It is assumed that this entrance from basement to the hall was a later insertion. However, the position of the cross passage screen(S) is uncertain. There is no evidence for its position, no stop chamfers to mark a permanent position on the joists as one might expect with carpentry of this standard. So while the insertion of the staircase in the late 18th or early 19th century probably afforded the opportunity to enclose the basement entry there may have been some form of access, such as a trapdoor, prior to this.

4.2.5 The cross passage door (E) is thought to have been blocked off in one phase of alteration but on closer inspection the doorway was initially blocked only partially and a

small window inserted (**Plates 22**). There is a clear distinction between the doorway being blocked and reduced in size initially, and plastered to the reveals of this window and at a later date, and with the insertion of the staircase in the late 18th or early 19th century, this opening was crudely blocked (**Plate 23**). It appears that the early oak doorframe sit on the inner edge of the former doorway, possibly relocated. It was possible to examine this on a second visit.

The conclusion must be that the cross passage was dispensed with for some reason, but a window retained. This doorway was completely blocked when the staircase was inserted. Could the door (E) from **[GF2]** have been made to facilitate this change after the primary phase but before the insertion of the staircase? The masonry link being added later and enclosing this door.

4.2.6 The hall **[GF4]** is off the cross passage to the south. The screen that is now visible has been clearly reconstructed from an earlier partition. The ceiling has one large 320mm square beam in central position in the room and a lighter 270mm beam to south of room against fireplace. Northwards the joists continue to the beam over cross passage partition (N). These beams have 70mm chamfers with stepped plain curved stops. All joists have simple stopped chamfers.

A window in the east wall has one window with modern casement. Several details point to this being the original size such as the chamfer on the internal lintel.

The wall opposing the screen has a relatively small fireplace. A window, that seems enlarged, is to the right of the fireplace. This recess was apparently known as the wainscot chamber and it is possible that this area was separated from the main room, perhaps as a bed, but this is conjectural. (perscomm. owner). To the left of the fireplace a stone staircase winds to the first floor, lit by a small window with later fitting. An oak doorway with later softwood boarded door closes the stair (**Plate 24**). Wall (W) is plain apart from one window with sash light. The central beam rests in this wall on a protruding stone.

4.3 First floor

4.3.1. The first floor **[FF1]** must have presented a magnificent spectacle when first constructed. At 3m high the ceiling is lofty and there are twelve sections of counter changing joists supported upon ten principal beams. All have plain stopped chamfers with the principal beams having a 70mm chamfer and stepped curved stops. A repair has been made to the south west section with joists and beams being replaced with timber cut from a monkey puzzle tree that stood nearby but a good match in carpentry was made (Pers. Comm. owner). There is no evidence of any early partition or screen and the ceiling was clearly intended to impress in its entirety (**Plate 25**).

Latterly, the chamber was been divided into four rooms and a staircase & landing. Access to the first floor was originally by the fireside winder stair with stone steps and an oak doorway to shut off the stairs from the hall. A small window lights the lower stairs.

The stair continues to the loft in modern timber, a replacement for a similar version but this cannot be claimed with certainty. The stairwell to the loft is finely worked and circular but there is no sign of masonry steps or timber fixings. An oak newel post completes the stair to the loft from the first and is attached to a purlin in the loft. The post is notched for earlier steps. These stairs, where they enter and exit the first floor, have a double door set in a timber framed wall to separate the stairs from the first floor **[Figure 9] (Plate 26)**. The wattle and daub in this screen has been repaired in places but there are areas of original hazel wattle, of small dimension, remaining *in situ* (plate 27).

4.3.2 The northern end of this chamber **[FF1]** is lit by sash windows on each elevation (E,W) and a further window is positioned in the gable, next to the fireplace **(Plate 28)**. To the left of the fireplace is the entrance to the latrine **[FF1]** which is similar in dimension to the ground floor latrine. The position of the shaft is to the left but now sits under a water immersion tank and could not be examined. Lit by small mullion window with early frame *in situ* but without central mullion.

4.3.3 A door leads through to the central section of the later modernised chamber onto a landing to the rear staircase **(Plate 29)**, and central room to the front of the building lit with an enlarged window with metal casement. The detail of the staircase, with plain, square balusters suggests an early 19th century date which is supported by the partitioning of sawn timber, lath and plaster. The stairway is lit by a small window with sash light, set low.

4.3.4 The remainder of the floor is divided by partitioning into two further rooms. Room to south west is lit by two windows. The ceiling in this room has been repaired extensively, but rather well, by the use of timber from a monkey puzzle tree that grew nearby. The remaining room (SE) is lit by a window with modern light similar to hall (E) and a timber framed screen that accommodates two doors **(Figure 9) (Plate 26)**. One stair leading to GF and the other to attic

4.3.5 A timber staircase winds from first floor to loft or attic. There is an oak newel post, notched for an earlier stair. This stair allows an examination of the wattle screen that covers the stairway above the doorway. The main panel has been repaired in places between the oak posts but at the top of the stairs a section of original hazel staves, lime and horsehair plaster can be seen between the treads of the stair (Plate 27). Entry into the loft is by the side of the chimney breast but the visible four feet of one of the principal floor beams extends by the side of this breast into the stairwell. It is possible to discern what seem be **apotropaic marks** on the side of this timber **(figure 12)**. The discovery of this set of marks is interesting but difficult to date however. The pattern is similar to marks found elsewhere. These marks are thought to have been applied to parts of a building to ward off the entry of spirits – namely witches and are found in many forms. This particular type are termed multi-marks (Hall, 2005).

The Loft

The loft itself has four bays divided by three trusses. All have principal rafters with the outer trusses **[T1, T3]** being braced by raking struts while the central truss **[T2]** has a collar (**Figures 9,10,11**). Two tiers of trenched purlins rest on the principal rafters. From S gable to truss **[T1]** (**Plates 30, 34**) the purlins are scarfed with two pegs (**Plate 31**) to purlins that run the entire length of the rest of the loft.

The central truss is mortised on all inner visible faces (**Plates 32, 35**) to house a boarded partition. This has now gone but simple, undecorated boards are placed horizontally above the collar, now with a batten nailed to hold them in place. A simple shallow arch has been cut from the bottom of the collar, centrally, to decorate a doorway, now gone (**Plate 36**).

4.3.6 The trusses are housed at apex and clasped by three pegs in each joint and a square ridge piece and the bottom of principal rafters are set in wall plates. The raking struts **[T1, T3]** are pegged with one peg only. All the trusses have a simple stopped chamfer. Raking struts to **[T3]** (**Plate 33**) are dimensionally smaller than **[T1]**. Northernmost two bays 3 & 4 retain early or original floor boards although considerably worn and distorted (**Plate 34**). The layout of these short floorboards reflect the joist pattern beneath. The loft is lit at either end by two single paned lights.

5 **Dendrochronology**

5.1.1 Bron y Foel Isaf was sampled in August, 2011 by Martin Bridges of the Oxford Dendrochronology Laboratory. The results have now been reported (Bridge, 2011)

5.1.2 14 samples were collected from ten timbers. Difficulties with the samples, particularly with knots, that only became apparent after laboratory preparation meant that generally the timbers were not datable beyond a date range, unfortunately. The felling date range of 1595 -1614 led to the conclusion that the building was constructed sometime in the last years of 16th century.

6 **Discussion**

6.1.1 **Origins & Development**

6.1.2 Bron Y Foel was constructed during the period 1595 – 1614, and probably in the last years of the 16th century from the evidence of tree- ring dating, and was built in the typical style that has come to be known as the Snowdonia House with a ground floor plan of hall, fireplace and fireside stair of stone to first floor and a timber stair to loft level. A cross passage connected opposing doors originally with a service room to the north of the passage and with the remarkable latrine off this room.

6.1.3 The first floor seems to have been one large chamber and has exceptional height – 3m. It has been suggested that this house enjoyed some kind of court function because of the name ‘byrlllys’ (Cadw listing) with llys meaning court but this reference probably relates to a nearby house of similar age, Byrllysg, that bears this name and has been listed on separate deeds together with Bron Y Foel for the period. Nevertheless, the chamber is an impressive space with a magnificent ceiling. As a single chamber, it was heated with a fireplace at one end and had also had a latrine. The later insertion of a dogleg staircase with half landing and the partitioning into four rooms of this floor would have transformed the circulation, use, and comfort of the building. The stone staircase with double door arrangement that separated stairs from first floor at the south end do appear to have been blocked off with lath and plaster but uncovered at a later date. Lath marks still visible on the framing.

6.1.4 The construction of the roof was of principal rafters bearing on wall plates which sat on mass walls of rubble stone. Two tiers of trenched purlins and a squared ridge beam supported common rafters. The roof – slates and battens- has been replaced on at least one occasion.

The loft appears to have been divided into two rooms, divided by the central truss, which once held a partition screen. The horizontal oak boards that remain above the door may be a later insertion or change and are now nailed in place. There is no other sign of division. The principals and struts all have stopped chamfers, some very eroded. Floor boards

to the north of Truss 2 are early, possibly original, and the boards counter change relative to the joist structure beneath.

6.1.5 The latrine block has been attributed to William Lewis's time as Master at St. Cross Hospital in Winchester where similar garderobe blocks have been built. However, the date Lewis took up his position in 1627 makes this doubtful if we go with the construction date of the last years of the 16th century suggested by the dendrochronology. This suggests the influence for their construction came from elsewhere and possibly from an earlier owner, Tudor Price or Theodore Price as he later styled himself and also spent much time in England.

6.1.6 It is worth mentioning that the latrine block or garderobe, although uncommon in this part of Wales and not discovered elsewhere in Meirionnydd on a building of this type, was not an uncommon feature in buildings through the Middle Ages in Britain and was one of several ways of disposing of such waste. Their use however tended to be displayed in more important buildings or urban buildings so it is therefore a remarkable innovation to find this feature on a relatively small domestic building on the western coast of Wales. (Salzman, 1952, Wood 1965)

6.1.7 Bron Y Foel Isaf, has managed to survive virtually unaltered after its modifications of the late 18th or early 19th centuries and can be easily read as a fine example of a high status Snowdonia House.

7 ACKNOWLEDGEMENTS

7.1 This building recording was commissioned by Mrs. Margaret Dunn, Project Director for the North-West Wales Dendrochronology Project and great thanks is extended to her. I would like to thank Mr Nedw Griffiths, the owner, for his co-operation, understanding and hospitality during the course of several sampling visits and the recording itself. Hopefully, he will understand a little more about the building that has been in his family for many years.

8 Sources

a) Published sources

ALGOA, 1997. *Analysis and Recording for the Conservation of Works to Historic Buildings*

Brunskill, R.W. 2000. *Vernacular Architecture: An Illustrated Handbook*. Faber & Faber, London

Alcock, N.W., Barley, M.W., Dixon, P.W & Meeson, R.A. 1996. *Recording Timber Framed Buildings: An Illustrated Glossary*. CBA

English Heritage, 2006. *Understanding Historic Buildings: A Guide to Good Recording Practice*

Hall, L., 2005, *Period House Fixtures & Fittings 1300-1900*, Countryside Books

Hall, L., & Alcock, N., 1994, *Fixtures and Fittings in Dated Houses 1567-1763*, CBA

Salzman, L.F., 1952, *Building in England Down to 1540*, Oxford

Wood, M., 1985, *The English Mediaeval House*, Bracken

Smith, P. 1988. *Houses of the Welsh Countryside: A study in Historical Geography*, 2nd Ed. 1988 HMSO

Ed. Beverley Smith, J. & Beverley Smith, Llinos, *History of Merioneth*, 2001. Ch. 10, *Smith, P. Houses c 1415 –c 1642* University of Wales

b) Unpublished

Bridge, M. C. 2011. The Tree-Ring Dating of Bron Y Foel Isaf, Dyffryn Ardudwy, Gwynedd, Oxford Dendrochronology Laboratory, Report No. 2011/22

RCAHM Wales, Site file. Bron Y Foel Isaf. NRPN 28204

Photographic Record

HWBronyf 19	Subject	Orient'n from	date	photographer
1101	Front elevation Bron Y Foel	W	02.12.11	Peter Thompson
1102	Metal casement, front elevation	W	02.12.11	Peter Thompson
1103	Gable from NE showing latrine block	NE	02.12.11	Peter Thompson
1104	North gable revealing fenestration and the latrine block	N	02.12.11	Peter Thompson
1105	Latrine block and basement with later door	N	02.12.11	Peter Thompson
1106	Basement window and door	N	02.12.11	Peter Thompson
1107	North chimney	E	02.12.11	Peter Thompson
1108	House and 19th century range of outbuildings	N	02.12.11	Peter Thompson
1109	East elevation with 19th C range to right.	E	02.12.11	Peter Thompson
1110	Cross passage blocked doorway	E	02.12.11	Peter Thompson
1111	Hall window with modern casement.	E	02.12.11	Peter Thompson
1112	South gable	SE	02.12.11	Peter Thompson
1113	Door post south screen remnant. Moulding typical of 16th C	N	02.12.11	Peter Thompson
1114	Later staircase and entrance to basement	W	02.12.11	Peter Thompson
1115	Part of passage screen.	N	02.12.11	Peter Thompson
1116	Main beam over screen, chamfer & stop.	N	02.12.11	Peter Thompson
1117	Latrine or garderobe	S	02.12.11	Peter Thompson
1118	Latrine - light and ventilation	SW	02.12.11	Peter Thompson
1119	Latrine chute directly over stream	S	02.12.11	Peter Thompson
1120	Basement - external door, remodelled doorway south gable	S	17.01.12	Peter Thompson
1121	Basement -south end of main beam	W	17.01.12	Peter Thompson
1122	Blocked cross passage door.	W	17.01.12	Peter Thompson
1123	In this image an oak frame is clearly seen.	W	17.01.12	Peter Thompson
1124	Hall, fireplace and stair	N	02.12.11	Peter Thompson
1125	Portion of the of the first floor ceiling	N	02.12.11	Peter Thompson
1126	Timber framed partition with doors to stairs.	N	02.12.11	Peter Thompson
1127	Wattle and daub screen.	S	02.12.11	Peter Thompson
1128	First floor fireplace, latrine door	S	02.12.11	Peter Thompson
1129	18th - early 19th C inserted staircase	W	02.12.11	Peter Thompson
1130	Truss 1 with truss 2 beyond looking from the south	S	02.12.11	Peter Thompson
1131	Purlins scarf jointed with raking strut support below. Note scorch marks.	N	17.01.12	Peter Thompson
1132	Truss 2 from the south.	S	02.12.11	Peter Thompson
1133	Truss 3 from the south	S		Peter Thompson
1134	Truss 3 east from the north	S		Peter Thompson
1135	Mortise on principal rafter truss 2	E		Peter Thompson
1136	Truss 2 collar door head	S	02.12.11	Peter Thompson



Figure 1 – Location - Bron y Foel Isaf OS

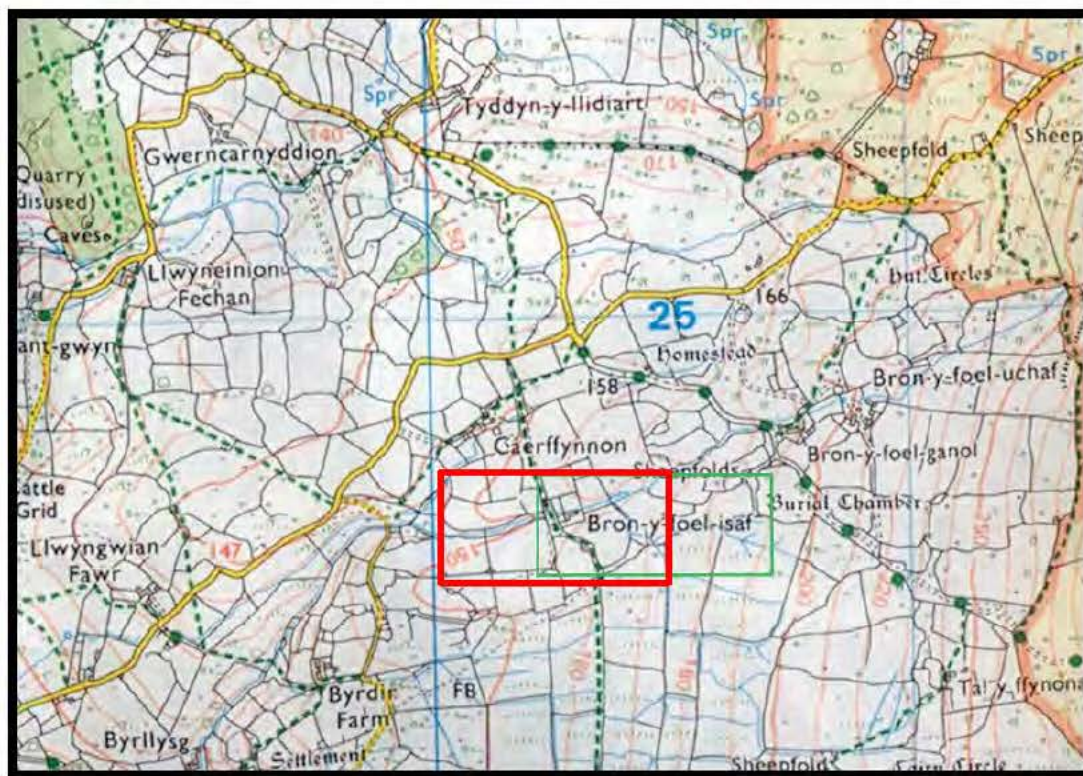


Figure 2 – Location - Dyffryn Ardudwy SH 60262459 OS End User



Figure 3 - Aerial map of Bron Y Foel

Google Earth

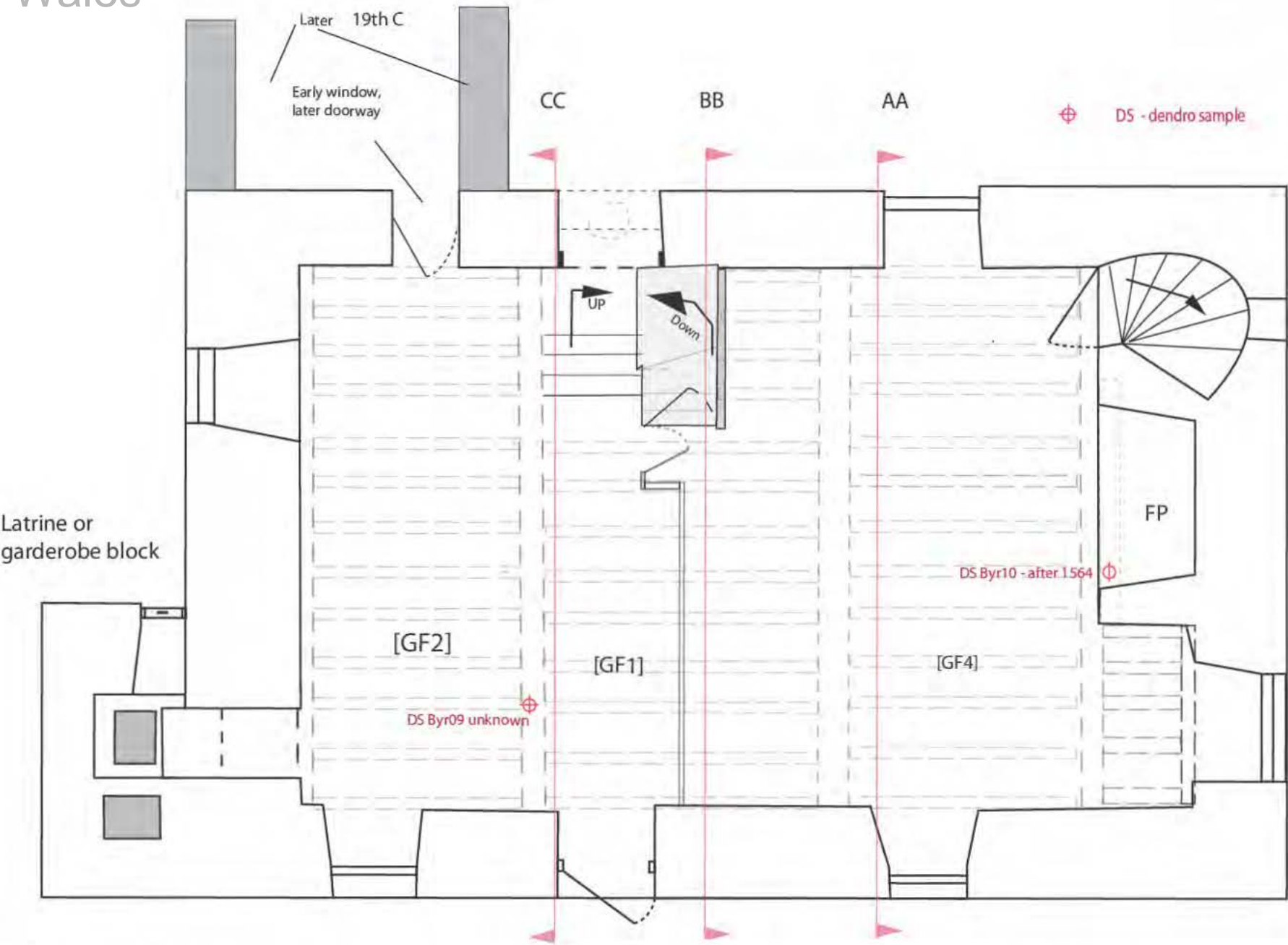


Figure 4: Ground floor plan

Bron Y Foel Isaf , Dyffryn Ardudwy, Gwynedd, LL44 2HZ

Scale 1:50 >A4

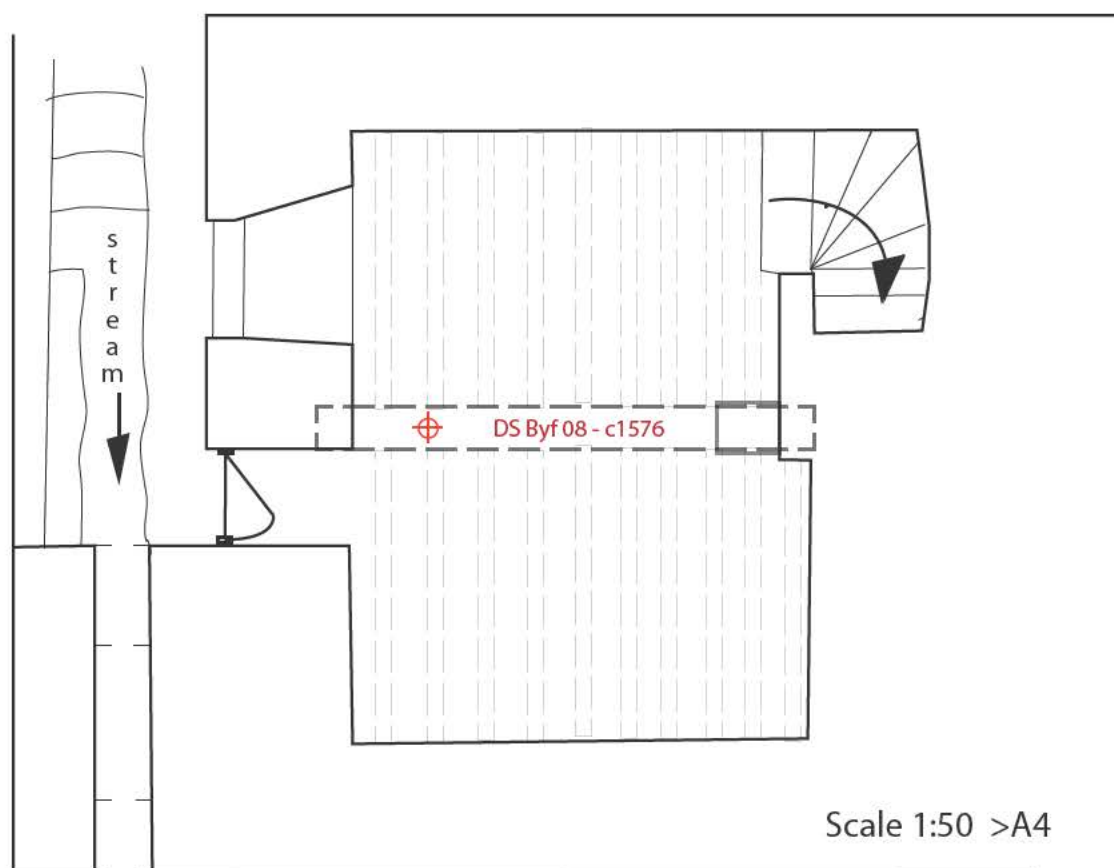
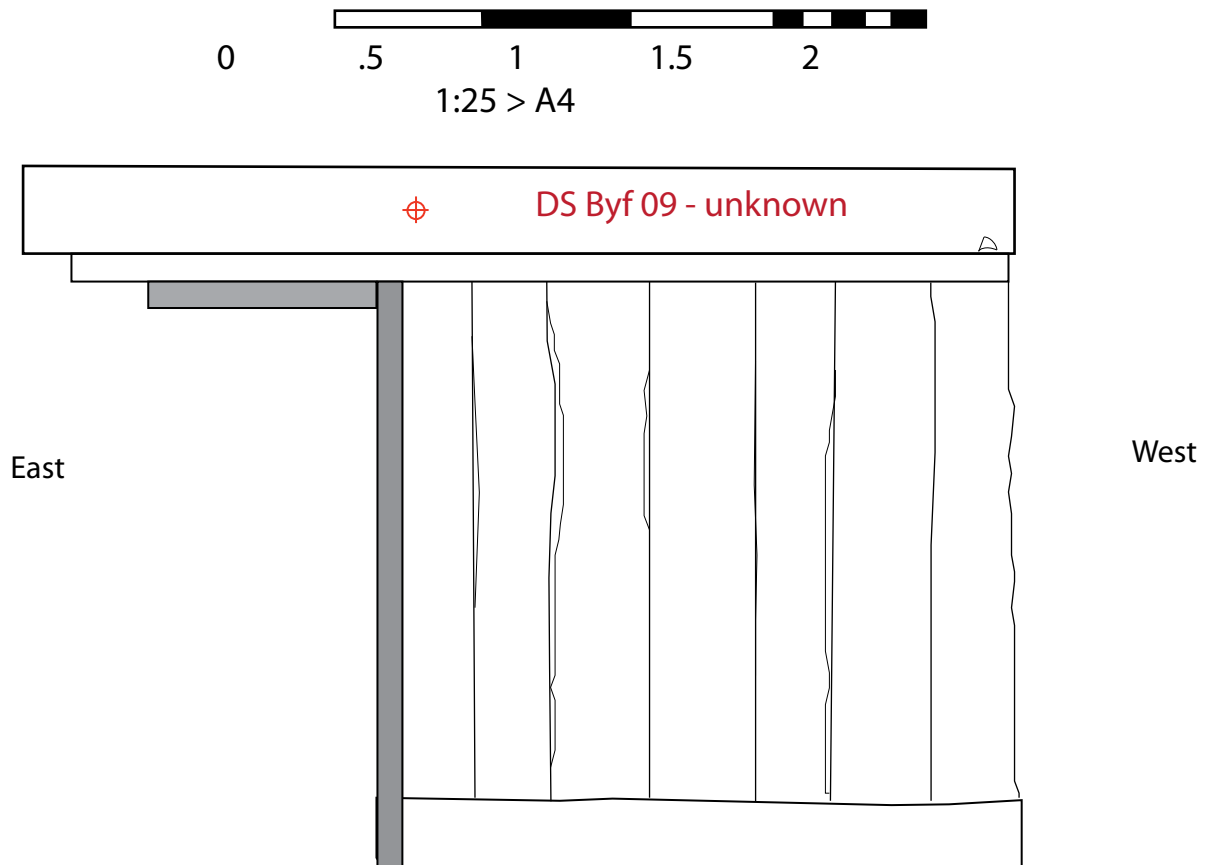


Figure 5: Basement

Bron Y Foel Isaf Isaf, Dyffryn Ardudwy, Gwynedd, LL44 2ZH

DS - Dendro Sample



Facing south.

Screen in service room. Floor level raised so this screen may be re-fitted but likely primary. Timber is of inferior work compared to re-used part of screen elsewhere e.g. enclosure for basement entry.

Figure 6: Ground Floor Screen - part.

Bron Y Foel Isaf, Dyffryn Ardudwy, Gwynedd, LL44 2ZH

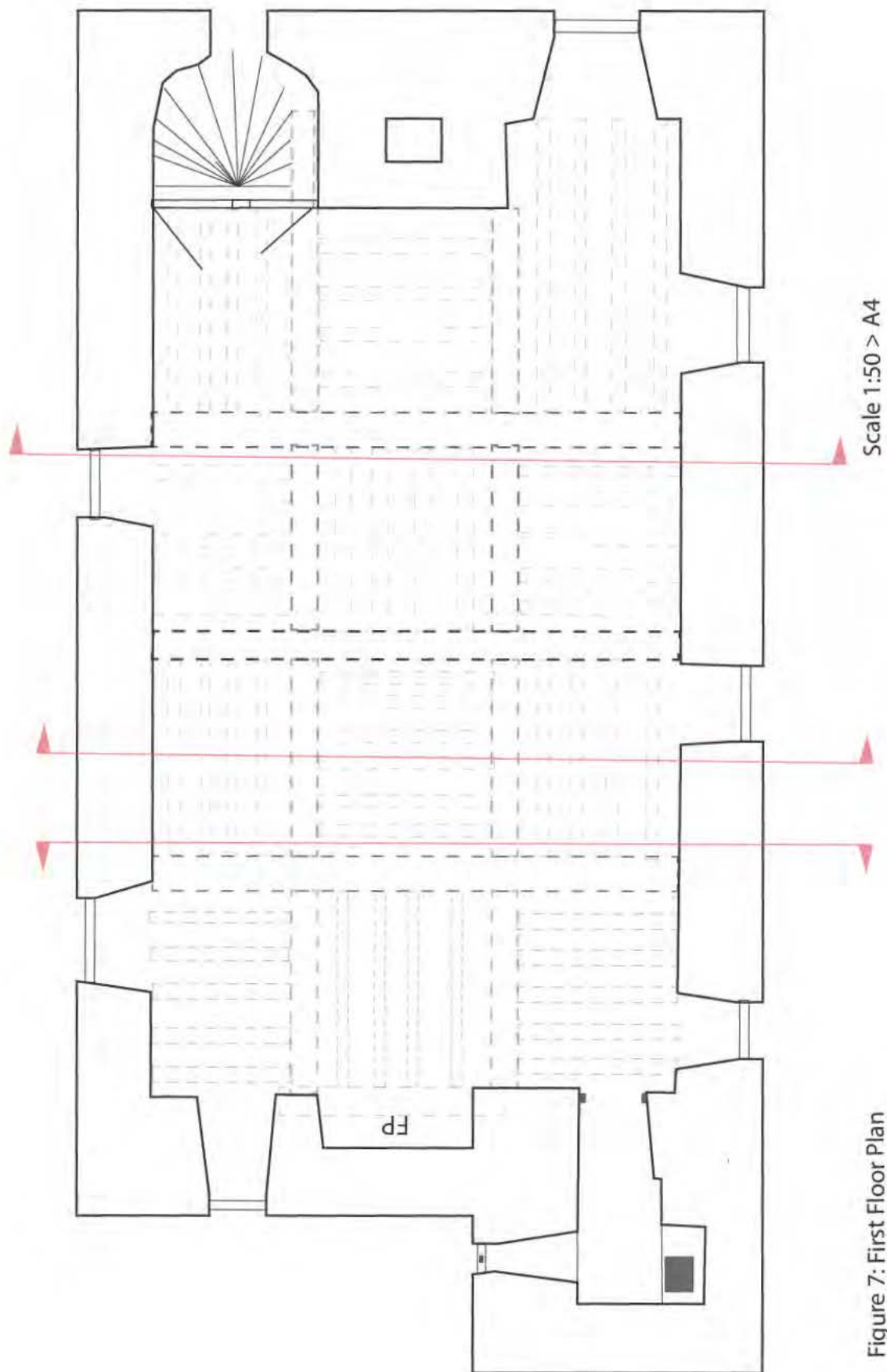


Figure 7: First Floor Plan

Bron Y Foel Isaf, Dyffryn Ardudwy, Gwynedd, LL44 2ZH

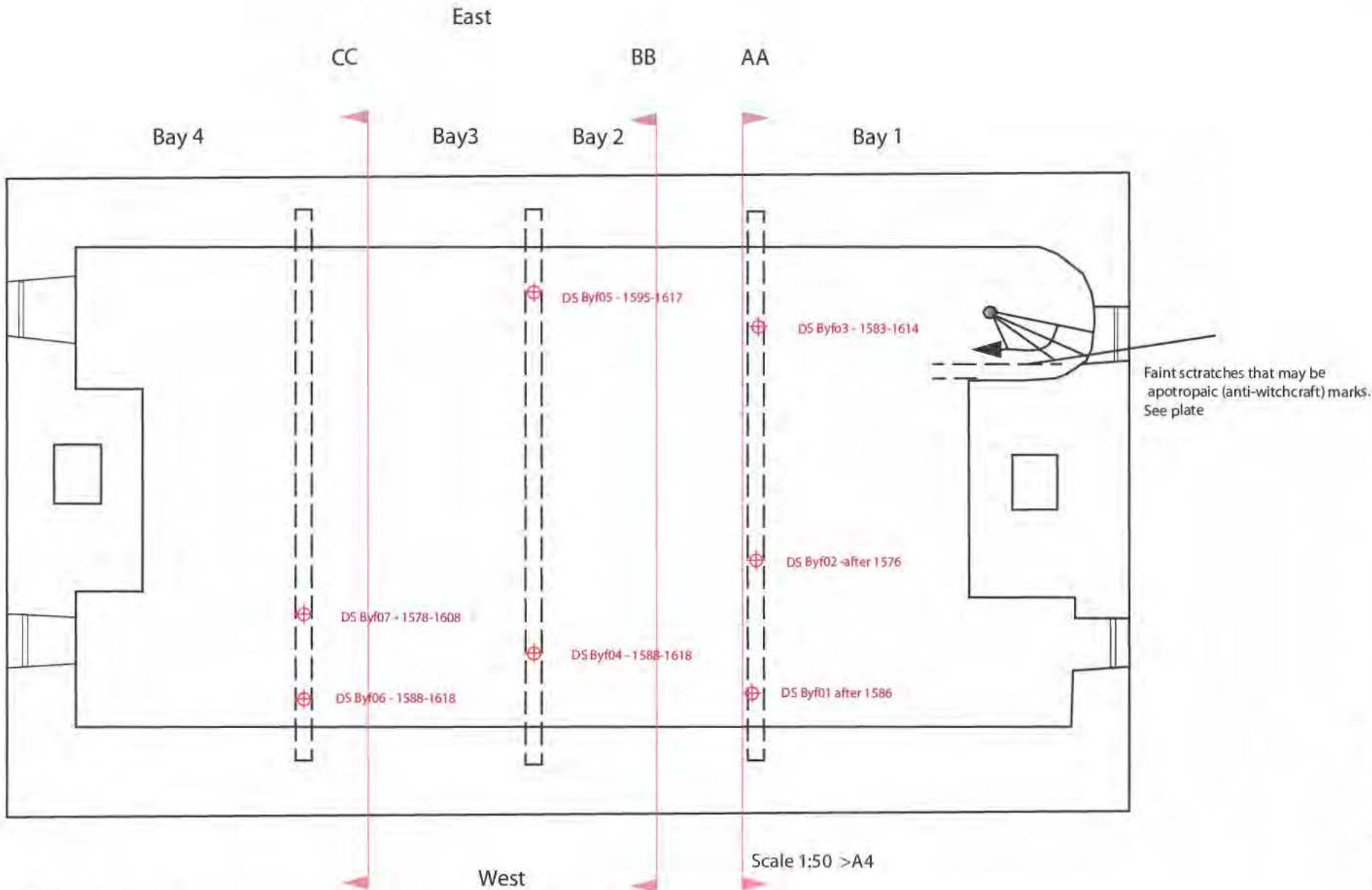
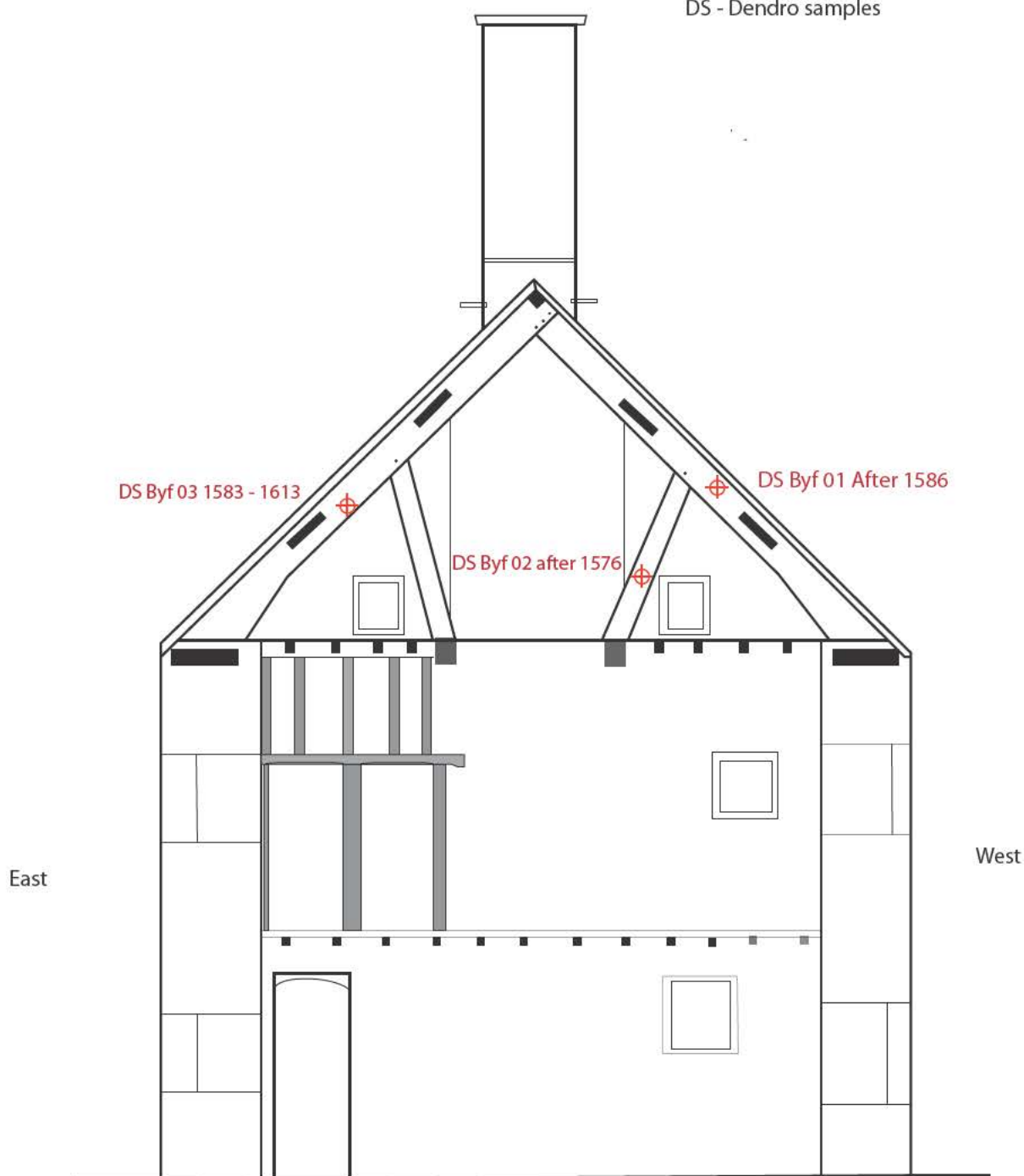


Figure 8 : Loft
Bron y Foel Isaf , Dyffryn Ardudwy, Gwynedd, LL44 2HZ

Truss 1 viewing southwards. Principal rafters set on wall plates braced by raking struts

DS - Dendro samples



Scale 1:50 > A4

Figure 9 : Section AA - Truss 1 looking south.

Bron Y Foel Isaf, Dyffryn Ardudwy, Gwynedd, LL44 2HZ

Truss 2. Principal rafters with collar.
Mortised for partition

DS - Dendro sample

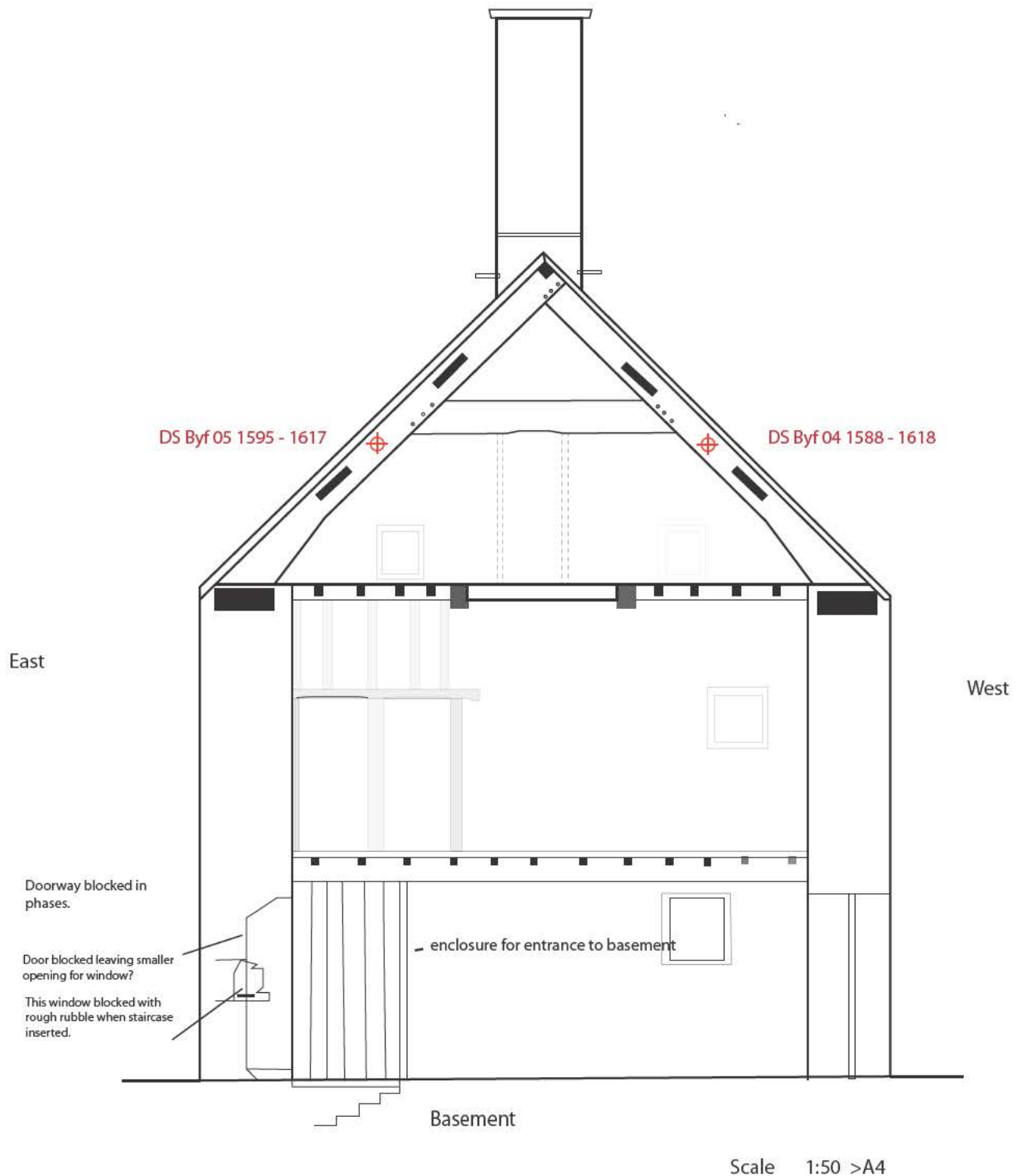


Figure 10: Section BB looking south. Truss 2 - principal rafters with collar

Bron Y Foel Isaf, Dyffryn Ardudwy, Gwynedd, LL44 2ZH

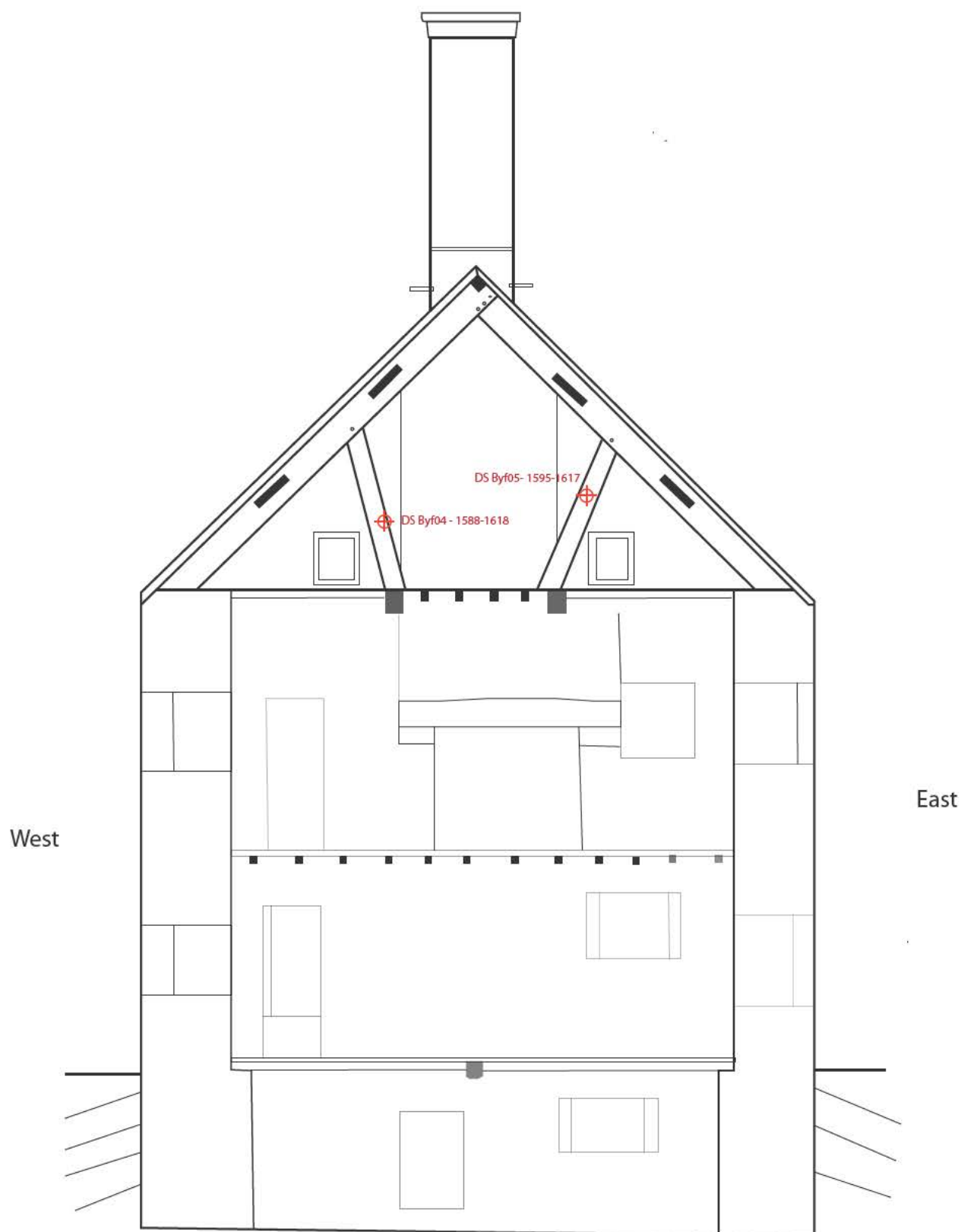


Figure 6: Bron Y Foel Isaf , Llanenddwyn, Dyffryn Ardudwy, Gwynedd, LL442HZ

Section CC looking north - Truss 3 - principal rafters with raking struts



Large beam protruding from first floor ceiling faced from top of staircase (south gable). Scratch marks discerned that have distinct similarities with apotropaic, ritual marks, used to avert witches. (Hall, 2005)

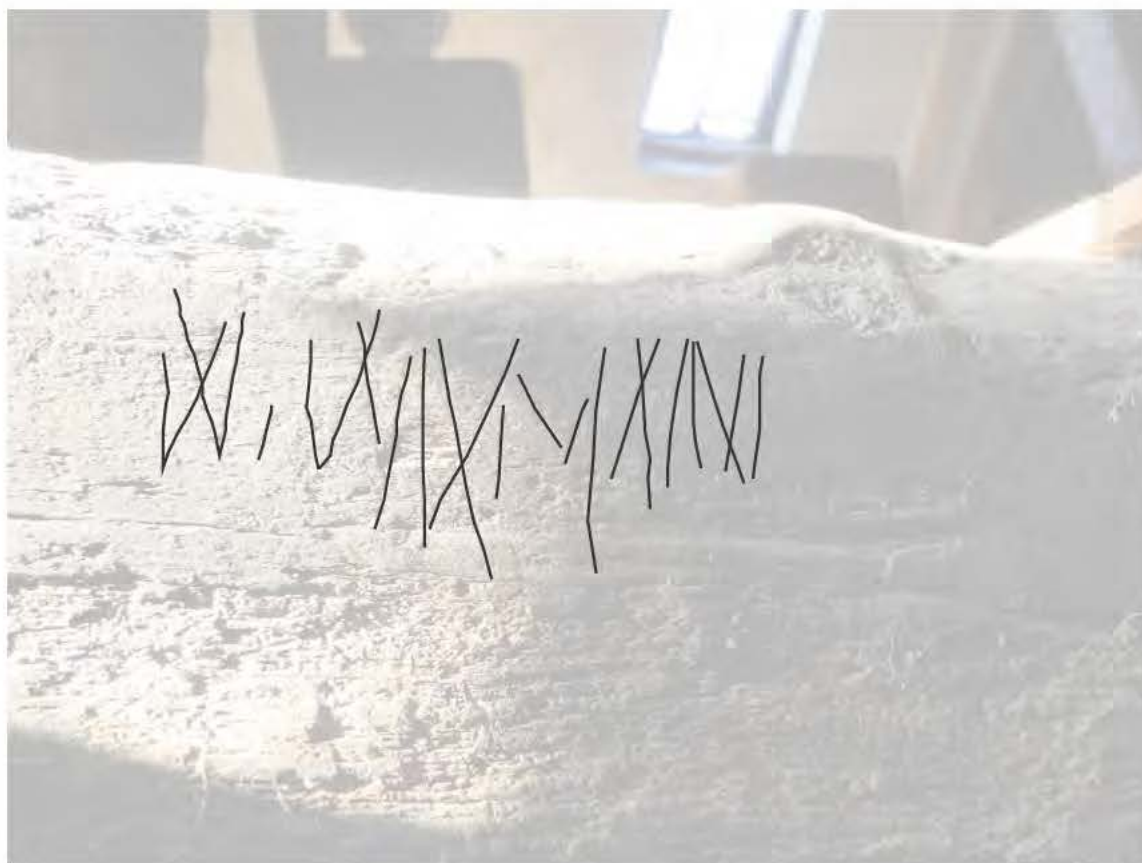


Figure 12 : Apotropaic scratch marks

Bron y Foel Isaf, Dyffryn Ardudwy, Gwynedd, LL44 2HZ

Photographic Record



Plate 1 - Front elevation Bron Y foel



Plate 2 - metal casement, front elevation.



Plate 3 - Gable from NE showing latrine block



Plate 4 - North gable revealing fenestration and the latrine block.



Plate 5 - Latrine block and basement with later door



Plate 6 - basement window and door



Plate 7 - North chimney



Plate 8 - House and 19th century range of outbuildings



Plate 9 - East elevation with 19th C range to right.



Plate 10 - Cross passage blocked doorway



Plate 11 - Hall window with modern casement.



Plate 12 - South gable



Plate 13 - door post south screen remnant. Moulding typical of 16th C



Plate 14 - later staircase and entrance to basement



Plate 15 - Part of passage screen. Service room.



Plate 16 - Main beam over screen, chamfer & stop. No Mortise.



Plate 17 - Latrine or garderobe



Plate 19 - Latrine chute directly over stream.



Plate 18 -Latrine - light and ventilation



Plate 20 - Basement - external door, remodelled doorway south gable



Plate 21 Basement -south end of main beam. Chamfer & stop just visible and fully located in wall with later supporting pillar underneath to the left.



Plate 22 - Blocked cross passage door. This doorway appears to have been reduced in size leaving a small window, which can be seen has been filled in roughly with stones.



Plate 23 - In this image an oak frame is clearly seen, including head and the plaster can be seen applied to the reduced doorway.



Plate 24 - Hall, fireplace and stair



Plate 25 - Portion of the of the first floor ceiling



Plate 26 - Timber framed partition with doors to stairs.



Plate 27 - Wattle and daub screen.



Plate 28 - First floor fireplace, latrine door



Plate 29 - 18th - early 19th C inserted staircase



Plate 30 - Truss 1 with truss 2 beyond looking from the south



Plate 31 - Purlins scarf jointed with raking strut support below. Note scorch marks.



Plate 32 - Truss 2 from the south.



Plate 33 - Truss 3 from the south



Plate 34 - Truss 3 east from the north



Plate 35 - mortise on principal rafter truss 2



Plate 36 - Truss 2 collar door head

