

File	Scale	Description	Plate
CB_39.TIF	2m	North western end of the college, looking NE	
CB_40.TIF	2m	North western end of the college, looking NE	Plate 31
CB_41.TIF	2m	North western end of the college, looking south	Plate 32
CB_42.TIF	2m	Rear of the college, looking east	Plate 33
CB_43.TIF	none	Rear of the college showing the detail of the windows on the main range, looking south	Plate 34
Chapel_gabel.TIF	2m	Rectified photogrammetric image of the gable end of the chapel	Plate 35

Chapel Window.

The gable window of the chapel was recorded photogrammetrically and the resultant, rectified images were scaled by importing them into TurboCad 2023 v.30.0 and scaling them in relation to the survey carried out with the Leica TS06 Total Station. The results are shown on Figures 4 – 7.

Conclusions

Whilst the front elevation is basically the same since the central tower was re-built in 1898 (Haslam *et al* 2009, 547). The rear, however, has a series of later additions including an extension which blocks one of the windows of the south western side of the chapel and a new store behind the kitchen. The proposed development would extend the line of the chapel and replace the modern store.

Acknowledgements

The survey was commissioned by Hywel Davies for the Trustees of Coleg y Bala. The architect for the project, Rhys Llwyd Davies provided much of the background information and the plans/elevations for the recording. Access to the College was arranged through Myfyr Jones, the Site Manager.



Reproduced from the Outdoor Leisure™ OL18, 1:25,000 scale
by permission of the Ordnance Survey ® on behalf of
The Controller of Her Majesty's Stationary Office
© Crown Copyright 2009
All Rights Reserved Licence Number AL 100014722

Figure 1: Location
Scale 1:25,000

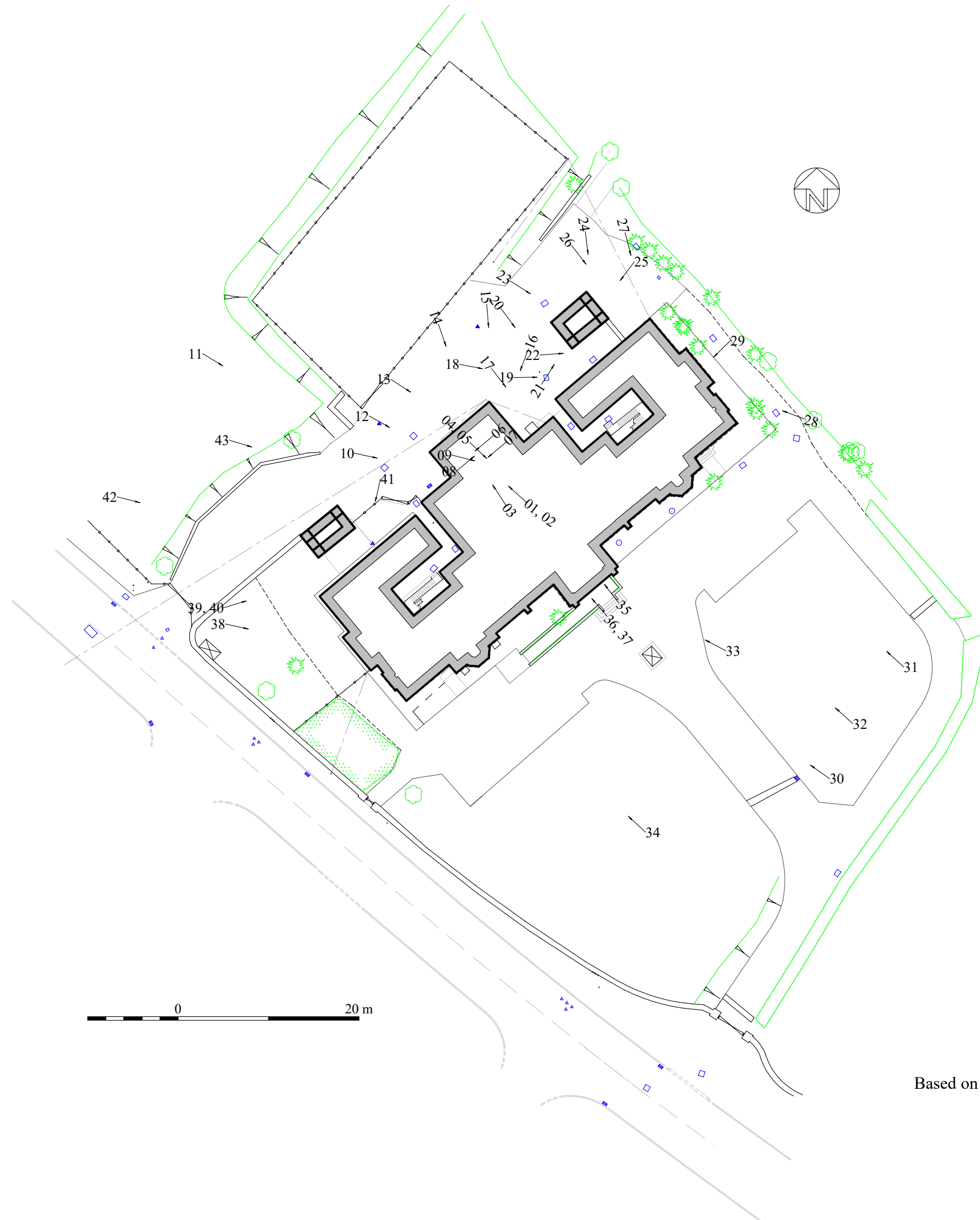


Figure 2: Location of the Photographs
Scale 1:500

Based on Drawing 18_006/01 by Curvasure Limited



West Elevation



South Elevation



North Elevation



East Elevation

Figure 3: Elevations
Scale 1:250

176m datum

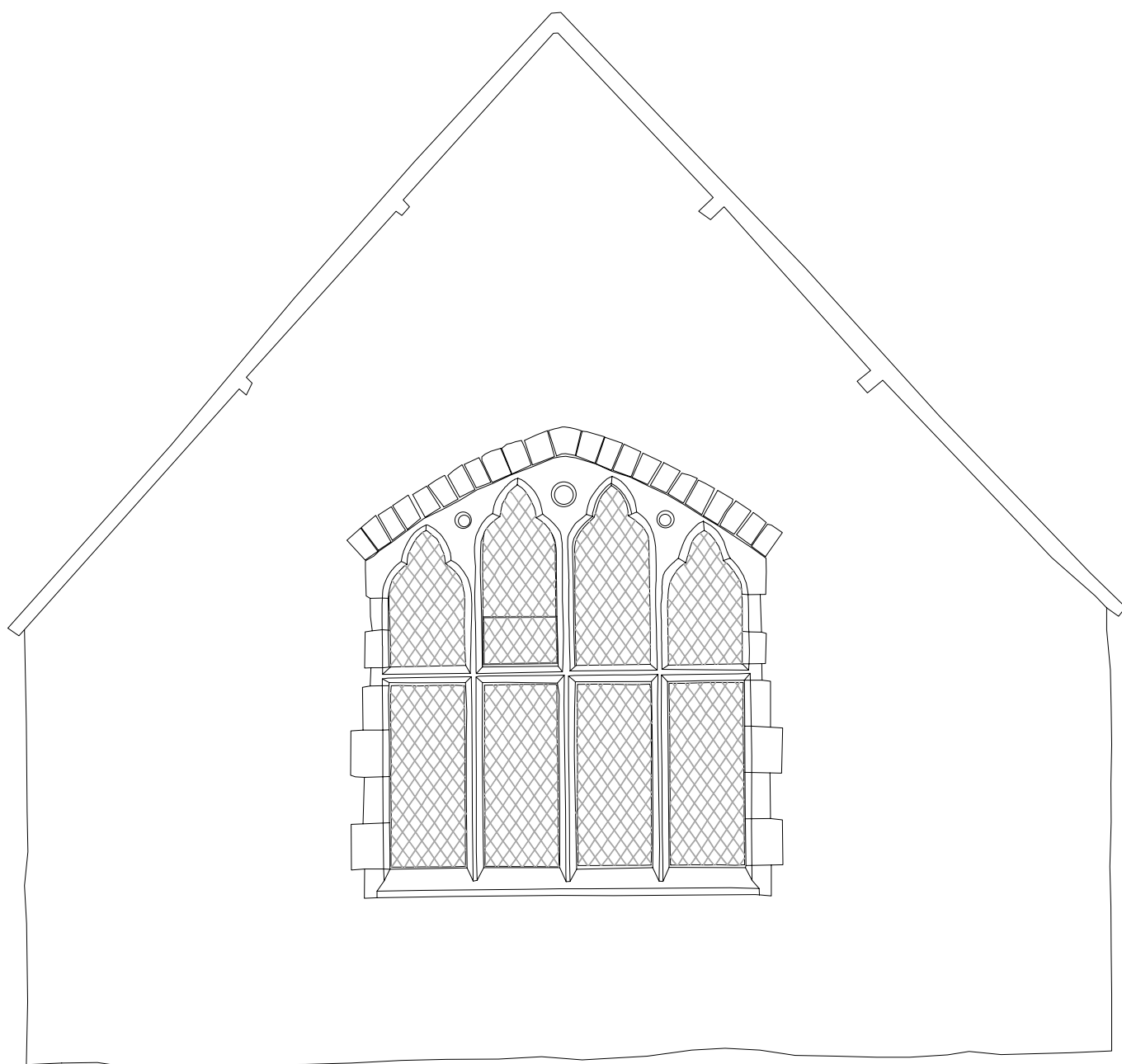


Figure 4: Coleg y Bala Chapel Window
Scale 1:50



Figure 5: Photogrammetric Image of Coleg y Bala Chapel Window
Scale 1:50

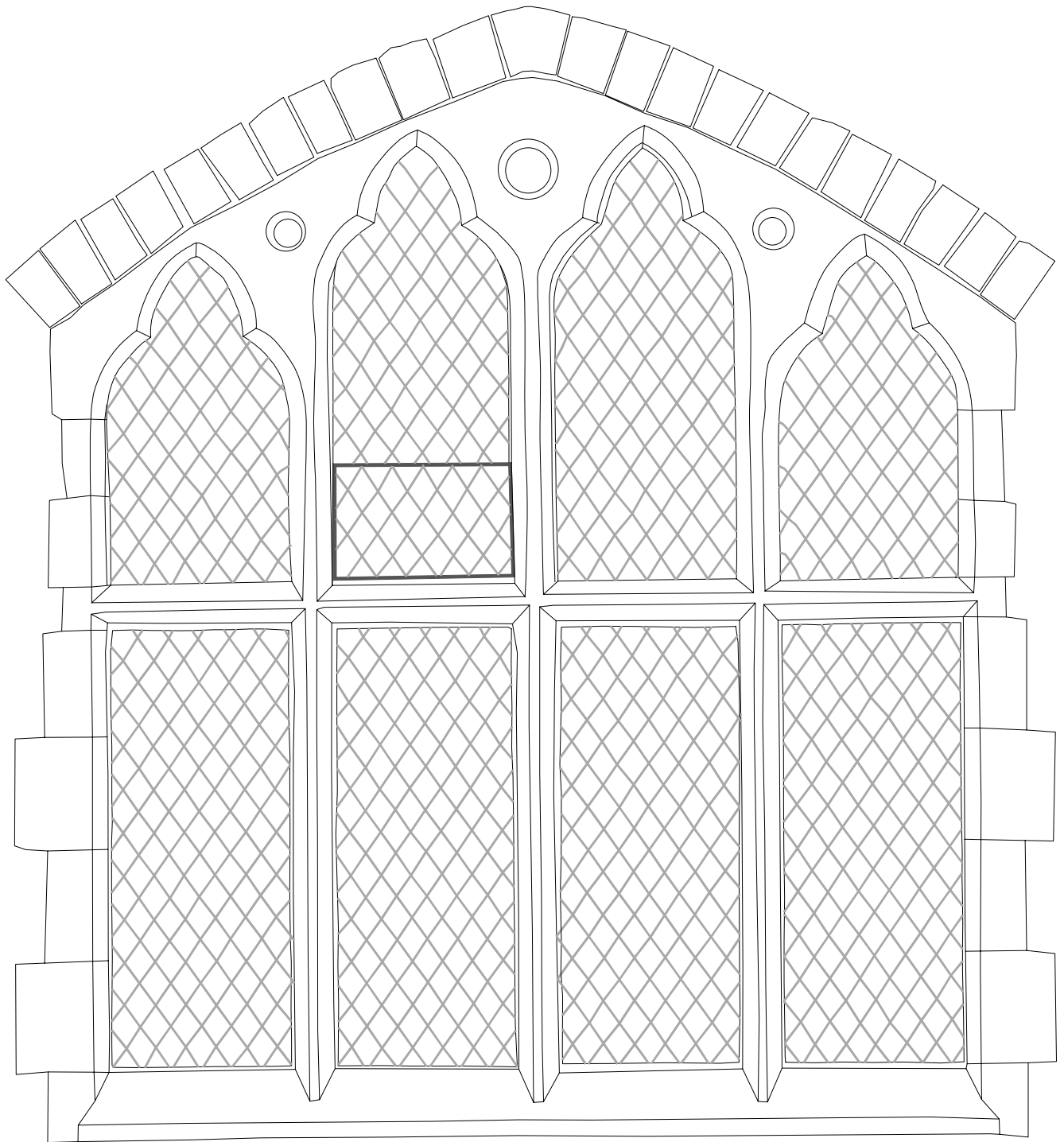


Figure 6: Coleg y Bala Chapel Window
Scale 1:20



0 1 m

Figure 7: Photogrammetric Image of Coleg y Bala Chapel Window
Scale 1:20



Plate 1: Inside the chapel, looking NW



Plate 2: Inside the chapel, looking SE

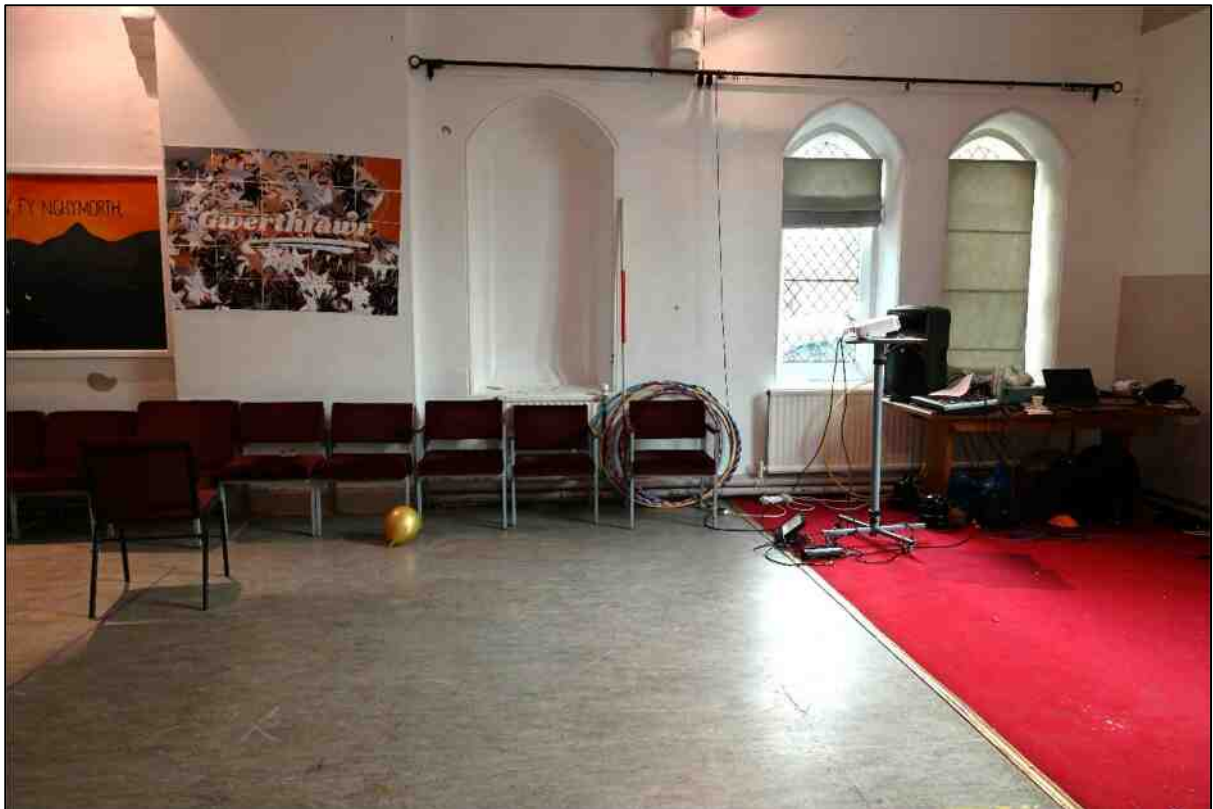


Plate 3: Windows on the south western wall of the chapel



Plate 4: Windows on the north eastern wall of the chapel



Plate 5: Truss over the NW end of the chapel



Plate 6: South eastern truss over the chapel



Plate 7: South western wall and gable of the chapel, looking ESE

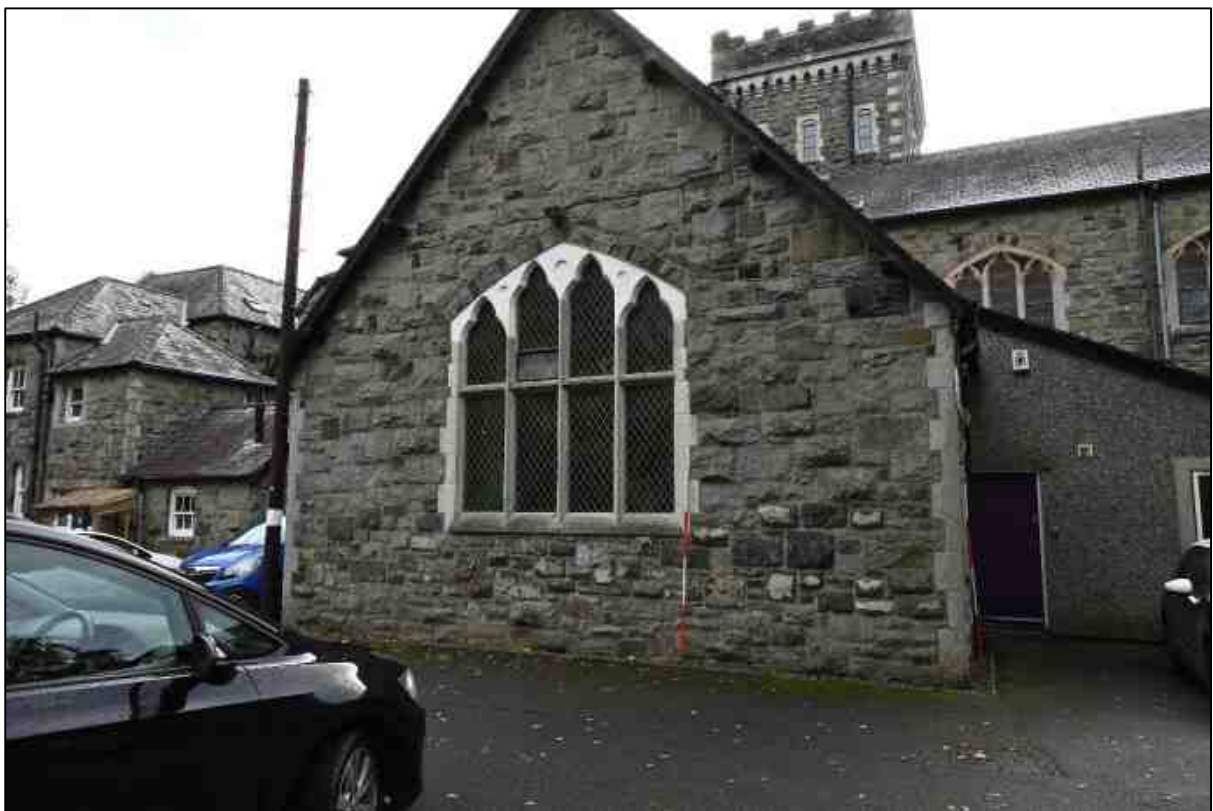


Plate 8: Gable end of the chapel, looking SE



Plate 9: Gable end of the chapel, looking SSE



Plate 10: Gable end and north eastern side of the chapel



Plate 11: North eastern side of the chapel



Plate 12: Rear door to the college



Plate 13: Kitchen range and modern store, looking ESE



Plate 14: Modern store, looking NE



Plate 15: Kitchen range behind the modern store, looking east



Plate 16: Modern store, looking SE



Plate 17: Modern store looking south



Plate 18: Modern store, looking SW



Plate 19: North eastern corner of the college, looking SE



Plate 20: North eastern side of the college, looking SSE



Plate 21: North eastern side of the college, looking NNW



Plate 22: Detail of window mouldings on the north eastern side of the college



Plate 23: Front elevation of the college, looking NW



Plate 24: North eastern end of the front elevation, looking NW



Plate 25: North eastern end of the front elevation, looking NW



Plate 26: Central tower on the front elevation, looking NW



Plate 27: South western end of the front elevation, looking NW



Plate 28: Detail of the shield to the right of the front door



Plate 29: Detail of the shield to the left of the front door



Plate 30: South western end of the college, looking SE



Plate 31: North western end of the college, looking NE



Plate 32: North western end of the college, looking south



Plate 33: Rear of the college, looking east



Plate 34: Rear of the college showing the detail of the windows on the main range, looking south



Plate 35: Rectified photogrammetric image of the gable end of the chapel

Appendix 1: Listing Description

(<https://cadwpublic-api.azurewebsites.net/reports/listedbuilding/FullReport?lang=&id=25989>)

Reference Number

25989

Building Number**Grade**

II

Status

Designated

Date of Designation

13/12/2001

Date of Amendment

13/12/2001

Name of Property

Coleg Bala, Including Forecourt Walls and Gatepiers

Address

Location

Unitary Authority

Gwynedd

Community

Bala

Town**Locality****Easting**

292466

Northing

336512

Street Side

NE

Location

Located at the northern approach to the town on an elevated site, set back from the road at right-angles within its own grounds.

Description

Broad Class

Education

Period

History

The Bala College was founded in 1837 ostensibly as a preparatory school for ministers of the Calvinistic Methodist denomination. It was co-founded by Lewis Edwards (1809-87) and his brother-in-law David Charles III, the former serving as the college principal. Edwards was a notable teacher and theologian and was regarded as one of the greatest preachers of his day. His achievements in the fields of theology and education were of considerable significance for C19 Wales. The college began in a store room behind Plas-yn-Dre before relocating to premises on the corner of Tegid Place in 1839. The present college complex was eventually completed in 1867, the foundation stone having being laid on June 15th 1865. A general college education was taught here until 1891 and from then on only theological subjects were taught; from 1967 the college has been used as a Methodist Youth Activities Centre.

Exterior

Mid Victorian college in simple Gothic style; snecked, rough-dressed stone elevations with sandstone quoins and dressings, and slate roofs (the chimneys have been removed in recent years). The building has a symmetrical 11-bay facade consisting of a tall central tower flanked by 2-storey, 2-bay main sections with advanced 2-and-a-half storey gabled wings beyond; set back at the ends are 2-and-a-half storey 2-bay blocks with hipped roofs. The tower section is square and of 4 storeys with surmounting crenelated and machicolated parapet; plain buttressing up to second stage. The first stage contains the main entrance and has a short flight of steps leading up to it, together with a modern concrete ramp giving access from L to R. Moulded, pointed-arched entrance with label stops in the form of shields; these have been recarved in 1891, that to the L bearing that date together with a scroll inscribed: 'Schola Theologica.' Multi-panel double doors, with internal part-glazed Gothic doors having tripartite arched upper sections. Triple cusped lancet group to the tower's second stage, with stringcourse below; 2-light window to the third stage with cusped lights, and 3 single lights to the upper stage. The flanking 2-bay sections have dividing stepped buttresses and a plain stringcourse between the floors. Three-light windows within broad pointed arches to each floor, those to the ground transomed and with shouldered-arched heads to the lights, and those to the first with cusped heads; plain glazing throughout. The adjoining gabled bays are slightly advanced and have 2-storey canted bay windows with plain 2-pane sashes; modern 4-light windows above (replacing 2-light arched-headed originals). The end sections are set back and have arched entrances to the inner bays with plain doors and overlights; single light windows above. The outer bays have paired windows; plain 2-pane sashes throughout, with stringcourse between the floors. These end sections each have 2 modern flat-roofed dormer windows to the attic floor (replacing single gabled dormers). The rear elevation is asymmetrical. In the centre is a single-storey advanced hall block with steeply-pitched roof and large 4-light transmullioned Gothic window; modern catslide extension extruded in the angle to the R. Adjoining to the L of this block is a 2-storey stair

projection with hipped roof and 6-light Gothic window, transmullioned and arched as before. Further Gothic-style windows of 2- and 3 lights to the upper floor of the main block, to either side of the hall and stair projections. The outer wings have lower advanced sections with hipped roofs; small single-storey modern additions to L and R. Coped rubble walls front the road on the SW side, and partly define a forecourt area to the SE and W of the college building; simple gate piers with plain iron gates at the southern corner.

Interior

Entrance hall with pointed, chamfered arch inscribed with the date 1867 at its apex; polychromed tiled floor. At the end of the hall is an axial corridor running L to R, with the hall beyond and the stairwell off to the R. This has an open well stair in simple Gothic style with arcaded balustrading.

Reason for designation

Listed for its special historic interest as the Bala Theological College, originally founded in 1837, and of great significance for the continuance and development of C19 Methodism in Wales.

Appendix 2: Description in Haslam et al 2009

Haslam, R., Orbach, J. and Voelcker, A. 2009. *The Buildings of Wales. Gwynedd. Anglesey, Caernarvonshire and Merioneth*. Yale University Press. p. 547

BALA COLLEGE, Ffrydan Road. Until 1967 the principal Calvinistic Methodist training college. 1865-7, by *W.H. Spaul*. Gothic, eleven bays, symmetrical about a central tower, with gables to frame the main seven bays. The outer two were staff houses, but students lodged in town. Spaul's tower, which had a slated wedge roof and a two-storey traceried window, had to be rebuilt in 1898, to a duller battlemented design by *Richard Davies*. In front, the Rev. Lewis Edwards †1887, seated bronze STATUE, 1911 by *W. Goscombe John*.