



eas

Engineering Archaeological Services Ltd.

Coleg Harlech

I.P. Brooks

EAS Client report 2024/25

Coleg Harlech

Survey Commissioned

By

Surveyed

by

I.P. Brooks

Engineering Archaeological Services Ltd.

Coleg Harlech

I.P. Brooks

EAS Client report 2024/25

registered in England

No 2869678

CONTENTS

<i>Introduction:</i>	<i>1</i>
<i>NGR</i>	<i>1</i>
<i>Status</i>	<i>1</i>
<i>Location and Topography</i>	<i>1</i>
<i>Aims of Survey</i>	<i>1</i>
<i>SUMMARY</i>	<i>1</i>
<i>Methodology:</i>	<i>1</i>
<i>Background</i>	<i>2</i>
<i>Building Survey</i>	<i>2</i>
<i>Conclusions</i>	<i>5</i>
<i>Acknowledgements</i>	<i>5</i>
<i>References</i>	<i>5</i>
<i>Appendix 1: Listing description</i>	<i>38</i>
<i>Appendix 2: List of Photographs in the Archive</i>	<i>41</i>
 <i>List of Illustrations</i>	
<i>Figure 1: Location</i>	<i>6</i>
<i>Figure 2: Location of the Study Area</i>	<i>7</i>
<i>Figure 3: Plan of the Dressing Rooms</i>	<i>8</i>
<i>Figure 4: Locker Unit in Dressing Room 1</i>	<i>9</i>
<i>Figure 5: Locker Unit in Dressing Room 2</i>	<i>10</i>
<i>Figure 6: Location of the photographs</i>	<i>11</i>
 <i>List of Plates</i>	
<i>Plate 1: The Elphin Jones Library, looking north</i>	<i>12</i>
<i>Plate 2: The Elphin Jones Library, looking south</i>	<i>12</i>
<i>Plate 3: Rectified composite of the eastern wall of the Elphin Jones Library</i>	<i>13</i>
<i>Plate 4: Furniture of the Elphin Jones Library</i>	<i>14</i>
<i>Plate 5: Furniture of the Elphin Jones Library</i>	<i>14</i>
<i>Plate 6: The central niche in the Elphin Jones Library</i>	<i>15</i>
<i>Plate 7: Detail of the inscription in the central niche of the Elphin Jones Library</i>	<i>15</i>
<i>Plate 8: Southern window within the Elphin Jones Library</i>	<i>16</i>
<i>Plate 9: Middle window within the Elphin Jones Library</i>	<i>16</i>
<i>Plate 10: Northern window within the Elphin Jones Library</i>	<i>17</i>

<i>Plate 11: Shelving between the windows of the Elphin Jone Library</i>	17
<i>Plate 12: The Elphin Lloyd Jones Room, looking west</i>	18
<i>Plate 13: One of the cupboards between the windows of the Elphin Lloyd Jones Room</i>	18
<i>Plate 14: Detail of the panelling in the Elphin Lloyd Jones Room</i>	19
<i>Plate 15: Southern wall of the Elphin Lloyd Jones Room</i>	19
<i>Plate 16: Cupboard unit on the south wall of the Elphin Lloyd Jones Room</i>	20
<i>Plate 17: The eastern wall of the Elphin Lloyd Jones Room</i>	20
<i>Plate 18: Mural on the northern wall of the Staff Room</i>	21
<i>Plate 19: Mural on the eastern wall of the Staff Room</i>	22
<i>Plate 20: Mural on the southern wall of the Staff Room</i>	23
<i>Plate 21: Character on the southern pier between the windows of the Staff Room</i>	24
<i>Plate 22: Shepherd on the central pier between the windows of the Staff Room</i>	24
<i>Plate 23: The Harpist on the northern pier between the windows of the Staff Room</i>	25
<i>Plate 24: Dressing Room 1, looking south west</i>	25
<i>Plate 25: Supports for the bench of the vanity units</i>	26
<i>Plate 26: Dressing Room 1, looking NNE</i>	26
<i>Plate 27: Detail of the lockers in Dressing Room 1</i>	27
<i>Plate 28: Shower in Dressing Room 1</i>	27
<i>Plate 29: Rectified, composite image of the dresser unit in Dressing Room 1</i>	28
<i>Plate 30: The vanity unit in Dressing Room 1</i>	29
<i>Plate 31: Vanity unit on the eastern side of Dressing Room 2</i>	29
<i>Plate 32: Vanity unit on the eastern side of Dressing Room 2</i>	30
<i>Plate 33: Vanity unit on the western side of Dressing Room 2</i>	30
<i>Plate 34: Sink unit in Dressing Room 2</i>	31
<i>Plate 35: Lockers in Dressing Room 2</i>	31
<i>Plate 36: Western side of the dresser unit in Dressing Room 2</i>	32
<i>Plate 37: Name tag on the eastern side of the dresser unit in Dressing Room 2</i>	32
<i>Plate 38: Name tag on the eastern side of the dresser unit in Dressing Room 2</i>	33
<i>Plate 39: Post-it note on one of the lockers in Dressing Room 2</i>	34
<i>Plate 40: Composite, rectified image of the lockers in Dressing Room 2</i>	35
<i>Plate 41: Windows in the north west corner of Dressing Room 2</i>	36
<i>Plate 42: Window latch in Dressing Room 2</i>	37
<i>Plate 43: Spiral staircase</i>	37
<i>Plate 44: Corridor leading to the Gent's toilet</i>	37

Introduction

NGR: Centred on SH 72005 31746

Status: Listed Grade II*, Reference Number 2551

PRN: 35122

NPRN: 407668

Within Registered Historic Landscape HLW (Gw) 2 (Ardudwy)

Within the Essential Setting/Buffer Zone of The Castles and Town Walls of King Edward in Gwynedd - Harlech Castle, World Heritage Site 374

Location and Topography: (Figure 1)

Coleg Harlech is located to the west of the A496, approximately 500 m SSW of Harlech Castle. The building is on a platform cut into the steep slope down to the level of the railway and Morfa Harlech.

Aims of the Survey

To record four rooms within Coleg Harlech that had suffered considerable water damage, before they were restored.

SUMMARY

Engineering Archaeological Services Ltd were commissioned to record four rooms at Coleg Harlech which had been severely damaged by water ingress. On the ground floor are two dressing rooms, associated with Theatr Ardudwy and on the first floor the Elphin Jones Library and Elphin Lloyd Jones Room. The two floors are linked by a concrete, spiral staircase. The fieldwork took place on 17/07/2024 and 28/11/2024.

Comisiynwyd Engineering Archaeological Services Ltd i gofnodi pedair ystafell yng Ngholeg Harlech a oedd wedi'u difrodi'n ddifrifol gan ddŵr oedd wedi dod i mewn. Ar y llawr gwaelod mae dwy ystafell wisgo, sy'n gysylltiedig â Theatr Ardudwy ac ar y llawr cyntaf mae Llyfrgell Elphin Jones ac Ystafell Elphin Lloyd Jones. Mae'r ddau lawr wedi'u cysylltu gan risiau troellog concrit. Cynhaliwyd y gwaith maes ar 17/07/2024 a 28/11/2024.

Methodology

Coleg Harlech was visited on 17/07/2024 and 28/11/2024 to record the rooms damaged by water ingress. The recording was based on the plans by Rhys Lwyd Davies, (4 34 (1) 21, 4 34 (1) 32 and 4 34 (1) 33). Photographs were taken with a Nikon V5 Digital Camera at a resolution of 24.2 MP with the photographs recorded in RAW format, which were converted to .TIFF for the archive. Where possible the photographs included a metric scale. Further photographs were taken with a Panasonic Lumix DC-FT7, with a resolution of 20.1 MP, which were processed with Agisoft Metascape v. 2.0.2 to produce photogrammetric models from which the elevations and details could be extracted.

The opportunity was also taken to photograph the Staff Room to the south which has walls with painted scenes

Background

The core of Coleg Harlech is Plas Wernfawr which was constructed in 1908 for George Davidson. The house occupied the site of a dis-used quarry. The house was extended in 1910 with the addition of a Great Hall to the north. In 1925, Davidson retired to the south of France selling the property to Henry Gethin Lewis, at well below the market value, who, in turn, donated and endowed the building for use as the new Coleg Harlech. (<https://cadwpublic-api.azurewebsites.net/reports/listedbuilding/FullReport?lang=&id=25511>). The college opened in 1927.

A new library wing was added to the south of the main house in 1939 to designs by Griffith Morris and in 1968 catastrophe occurred when the great hall burnt down. Theatre Harlech (Theatr Ardudwy) was constructed in its place (opened 1974). It was to designs by Sidney Colwyn Foulkes and Partners (Haslam *et al* 2009, 616).

A leaking roof has caused significant damage to the rooms at the northern end of Plas Wern Fawr where it links to Theatr Ardudwy requiring the existing built-in furniture and plaster to be removed and the floors repaired.

On the first floor the rooms recorded are the Elphin Jones Library and the Elphin Lloyd Jones Room, whilst on the ground floor two dressing rooms and their associated facilities. The opportunity was also taken to photograph the murals on the walls of the Staff Room, immediately south of the Elphin Jones Library.

Building survey

First Floor

On the first floor two main rooms had suffered by water ingress. These were the Elphin Jones Library and Elphin Lloyd Jones Room. The Elphin Jones Library acted as an offshoot to the Staff Room, which is notable for the murals, by Robert Baker, (<https://coflein.gov.uk/en/site/407668/images>) on all of its walls which were painted in c1932. The Elphin Lloyd Jones Room also acted as a green room for the theatre to which it was linked by a spiral staircase to the dressing rooms on the ground floor (Figure 2). Also linked to the Elphin Jones Library is the Staff Room

The Elphin Jones Library (Plates 1 and 2) is a 6.78 m long, but only 2.46m wide and is linked to the “Staff Room”, to the south, but not to the Elphin Lloyd Jones Room to the north. The room is divided into three bays by semi-circular arches and there are two heating/ventilation grills in the northern wall (Plate 1)

On the eastern wall of the room are three, glazed cupboard/bookshelves (Plates 3 - 5) within arch topped niches. The cupboards reach a height of approximately 1.30 m and are topped with a wooden shelf that runs along the eastern wall of the room. Between the northern and middle cupboards is a small fireplace with plain white glazed tile surrounds. Between the middle and southern bookshelves is a block of closed cupboards with a large, vertically opening, single cupboard over two, opposed cupboard doors (Plate 4).

The central niche (Plate 6) is panelled in wood and contains a gilded decoration (Plate 7) consisting of an elaborated disc with the interlinked letters “EJS” at the centre of the disc. Around the periphery of the disc is the inscription “** BARRY * 22 JANUARY * 1916

HAMPSTEAD * 21 DECEMBER * 1928". Above the disc is a gilded, curved banner with "LLYFRGELL GOFFA" inscribed and below a straight banner with "ELPHIN LLOYD JONES" with each of the names separated with a knot symbol. This plaque is a memorial to Elphin Loyd Jones, the second son of Thomas Jones, a university professor, civil servant, administrator and author. Thomas Jones was also one of the founders of The Welsh Outlook and its first editor (1914-1916), of the Gregynog Press in 1922 and the principal founder of Coleg Harlech in 1927 (<https://biography.wales/article/s2-JONE-THO-1870>). Elphin died in 1928 at the age of 12 in a motoring accident ([https://en.wikipedia.org/wiki/Thomas_Jones_\(civil_servant\)](https://en.wikipedia.org/wiki/Thomas_Jones_(civil_servant))).

The opposite wall of the library holds three windows (Plates 8 – 10) separated by shelving (Plate 11). All the windows have round arched heads and multi-paned windows separated by mullions. The southern and central windows (Plates 8 and 9), each have three casement openings with each of these having elaborate fasteners and stays with spiral handles. The northern window (Plate 10) has no openings.

The Elphin Lloyd Jones Room (Green Room) is a much larger room (6.99 x 5.97 m) which has suffered considerable damage from the water ingress (Plate 12). There are semi-circular topped windows on two sides of the room and a glazed shelving unit along a third wall. The western wall of the room has three, semi-circular arched windows, each with multi-paned openings and three casement openings. Two of these casement windows were in the lower portion of the windows, whilst the third was centrally placed in the upper, arched, section. Between each of the windows are cupboards with glazed doors containing shelving (Plate 13). There is also a small section of wooden panelling in the south western corner of the room, effectively between the southern window of the western wall and the window in the southern wall (Plate 14).

There is also a single semi-circular topped window in the southern wall of the room (Plate 15). Adjacent to which is a cupboard unit with two, double, glazed, doors opening at each end and a central, single glazed door in the middle (Plate 16). Each section of the unit has three shelves. The unit is 1.26 m high and 2.4 m long.

Along the eastern wall is a full height, glazed shelving unit with four, double doors (Plate 17) and in the northern wall the doorway to the spiral stair leading down to the dressing rooms.

Whilst not part of the commissioned survey, the Staff Room is distinctive because of its wall paintings. A composite landscape runs around three sides of the room (Plates 18 – 20), whilst each of the piers between the windows on the western side of the room have pictures of three Welsh characters; a man holding a book, a shepherd and an harp player (Plates 21 – 23). The murals were painted by Robert Baker in the early 1930's and are reported as telling the story of a young miner leaving home to go to the college and his subsequent experience there (https://www.facebook.com/photo.php?fbid=3624571314228008&id=146120328739808&set=a.238166046201902&locale=en_GB). They show two main scenes with the eastern wall concentrating on rural (probably North Walian) scenes including druids and sheep (Plate 19); whilst the southern wall has industrial scenes and a harbour (possibly representing South Wales).

Ground Floor

The area affected by the water ingress on the ground floor includes the two dressing rooms for the theatre and the associated corridor and toilets (Figure 2).

These dressing rooms are clearly a relatively late development, having been inserted into an existing space, presumably as part of the construction of the Theatre Ardudw in 1973 (Haslam *et al* 2009, 616).

Dressing Room 1

This is the eastern of the two room and is also the smaller of the two dressing rooms (Figure 3) being 4.87 x 2.32 m in size. It has vanity units along the western and southern walls with large mirrors over a wooden bench and lights over (Plates 24, 29). The bench is supported by diagonal struts rather than vertical legs (Plate 25).

The eastern wall dominated by a locker/dresser (Figure 4, Plates 26, 27 and 29). This is constructed of a soft wood with a mahogany veneer and a dark wood banding defining the edges of the lockers. At one end are four lockers, forming a block, one locker wide. Each of these are 360 x 590 x 400 mm in size with a wooden door with a yale lock in the top, right hand corner. The bulk of this piece of furniture, however is divided into three spaces vertically. A top shelf, 600 mm high, sits over an area for hanging clothes. The rail is missing, however, the scar for the mount was seen. At the bottom of the furniture was an angled shelf, presumably for holding shoes.

In the NE corner of the room is a shower (Plate 28) and a double hand basin unit (Plate 30) is on the north wall (Plate 29).

Dressing Room 2

This is the larger of the two dressing rooms being 5.1 x 4.52 m in size. It has vanity units along the eastern side of the room and part of the western wall (Plates 31 and 32) and a short vanity unit on the eastern wall (Plate 33). A shower occupied the NW corner (Plate 33) and there was a double basin unit on the northern wall (Plate 34).

The centre of the room is dominated by a double-sided locker/dresser unit (Figure 5, Plates 35 – 36, 41). The northern end of this piece of furniture has a block of twelve lockers (Plates 35 and 41), arranged in four rows, over which there is an open shelf. Each of the lockers has a wooden door with a yale lock in its top left-hand corner. One of these retained a “post it” note inscribed “Avril’s Personal Locker” (Plate 39).

The bulk of this piece of furniture consisted of opposed hanging spaces with open shelves above and raking shelves below (Plate 36). Neither of the hanging spaces retained its rail, however the scars for the fittings remains. The open shelf on the eastern side retained sticky labels with the names “Eva” and “Aaliyah” written on them (Plates 37 and 38).

Further graffiti is on the mirror of the western vanity unit where the word “SARA” is written in lipstick (Plate 40).

It is likely that the dressing rooms were fitted into a single, earlier, room which had high level windows (Plate 42). These were originally casement windows with cast iron drop handles

(Plate 43), however some of these windows have been replaced by fan lights, particularly on the southern side of the room.

North of the dressing rooms is a corridor which links the dressing rooms to the spiral staircase leading to the Elphin Lloyd Jones Room above (Plate 44). This staircase is constructed of precast concrete and is part of the additions made to the complex when Theatr Ardudwy was added to the northern end of the building. The corridor also links the Dressing Rooms to the toilets (Plate 45). The Gents toilet is at the western end of the corridor, whilst the Ladies toilet is in between the spiral staircase and the Gents toilet on the northern side of the corridor. Where they survive the toilets had modern fittings.

Conclusions

The rooms recorded show two, different, styles of decoration and use of the building. The first floor retains the decoration from when the building was a college with a decorative scheme based, at least, on the 1930's with Arts and Crafts influences. This is particularly seen in the oak panelling behind the gilded memorial to Elphin Lloyd Jones.

The ground floor, however, is far more of a practical space with two dressing rooms retro-fitted into a single room within the sub-basement. This occurred in the mid 1970's with the construction of Theatr Ardudwy, after the great hall burnt down in 1968. Specialist dressing room furniture was included in both dressing rooms to a standard design, based on a unit with lockers at one end and a dresser unit with a clothes rail with a shelf above and a raked shelf below for shoes. Whilst a single unit was used in Dressing Room 1, a double unit was put in the, larger, Dressing Room 2. It is likely that the showers and the hand basin units were added to the original.

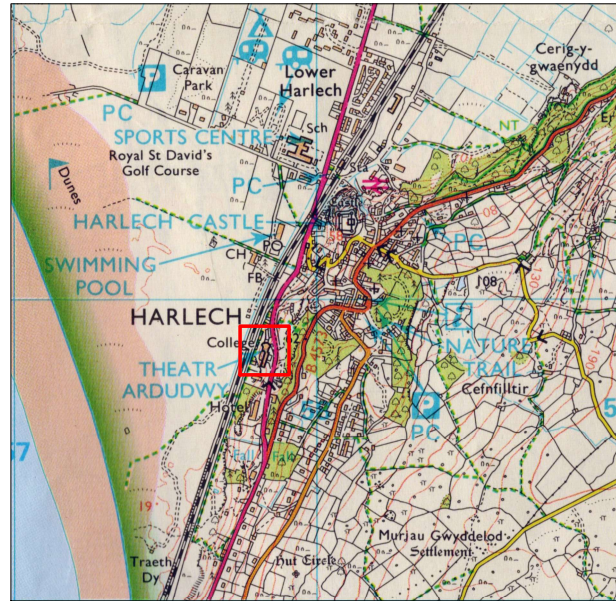
It is assumed that the smaller dressing room was used for male performers, whilst Dressing Room 2 was a female dressing room. Some support for this view is from the names on the dresser/locker unit in Dressing Room 2 and on the mirror of one of the vanity units.

Acknowledgements

The work was commissioned by Rhys Llwyd Davies. Access was enabled by the caretaker Martin Davis.

References

- Davidson, A. 2008. *Coleg Harlech: Harlech*. Gwynedd Archaeological Trust Report 761.
- Haslam, R., Orbach, J. and Voelcker, A. 2009. *The Buildings of Wales. Gwynedd. Anglesey, Caernarvonshire and Merioneth*. Yale University Press. London



Reproduced from the Outdoor LeisureTM OL18, 1:25,000 scale
by permission of the Ordnance Survey ® on behalf of
The Controller of Her Majesty's Stationary Office
© Crown Copyright 1994
All Rights Reserved Licence Number AL 100014722

Figure 1: Location
Scale 1:25,000

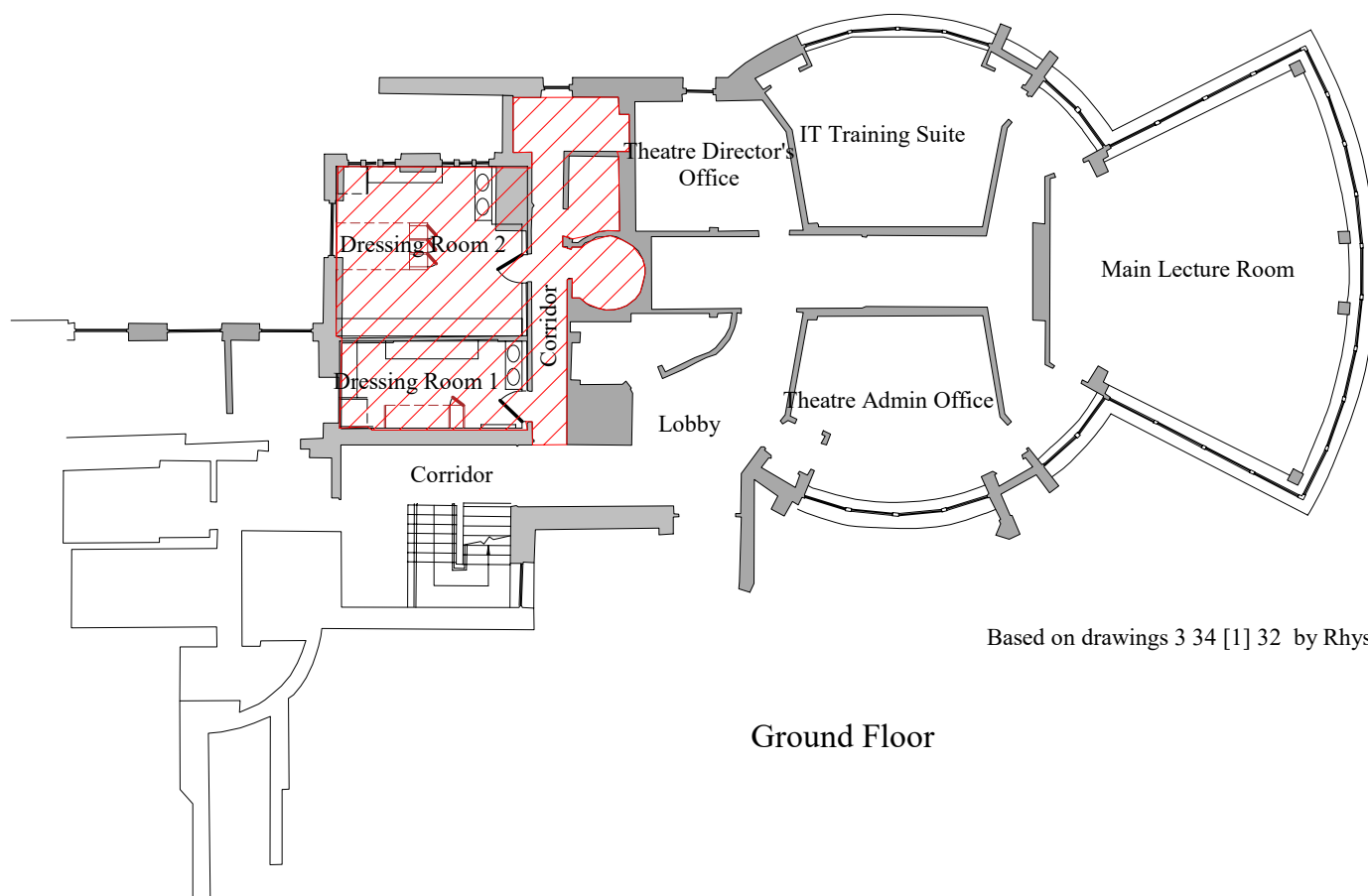
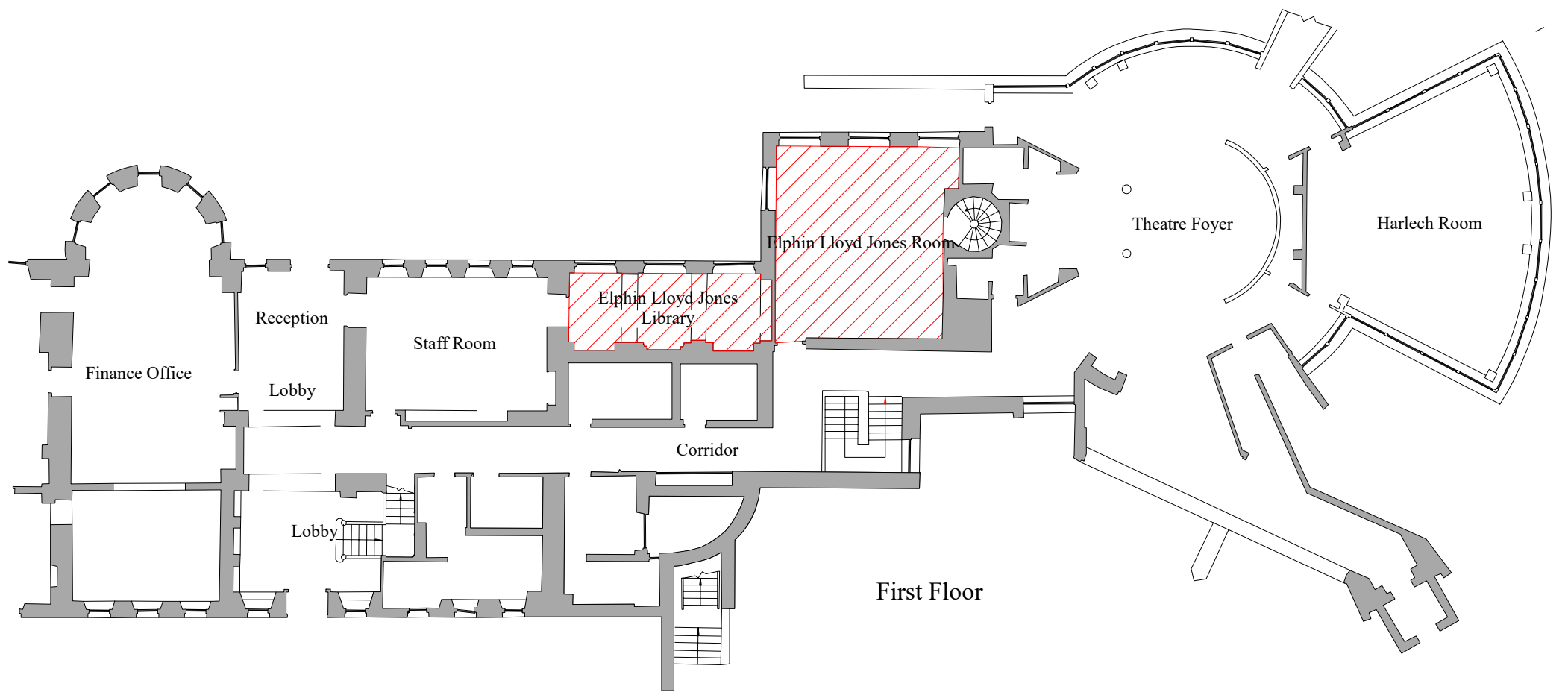


Figure 2: Location of the Study Area
Scale 1:200

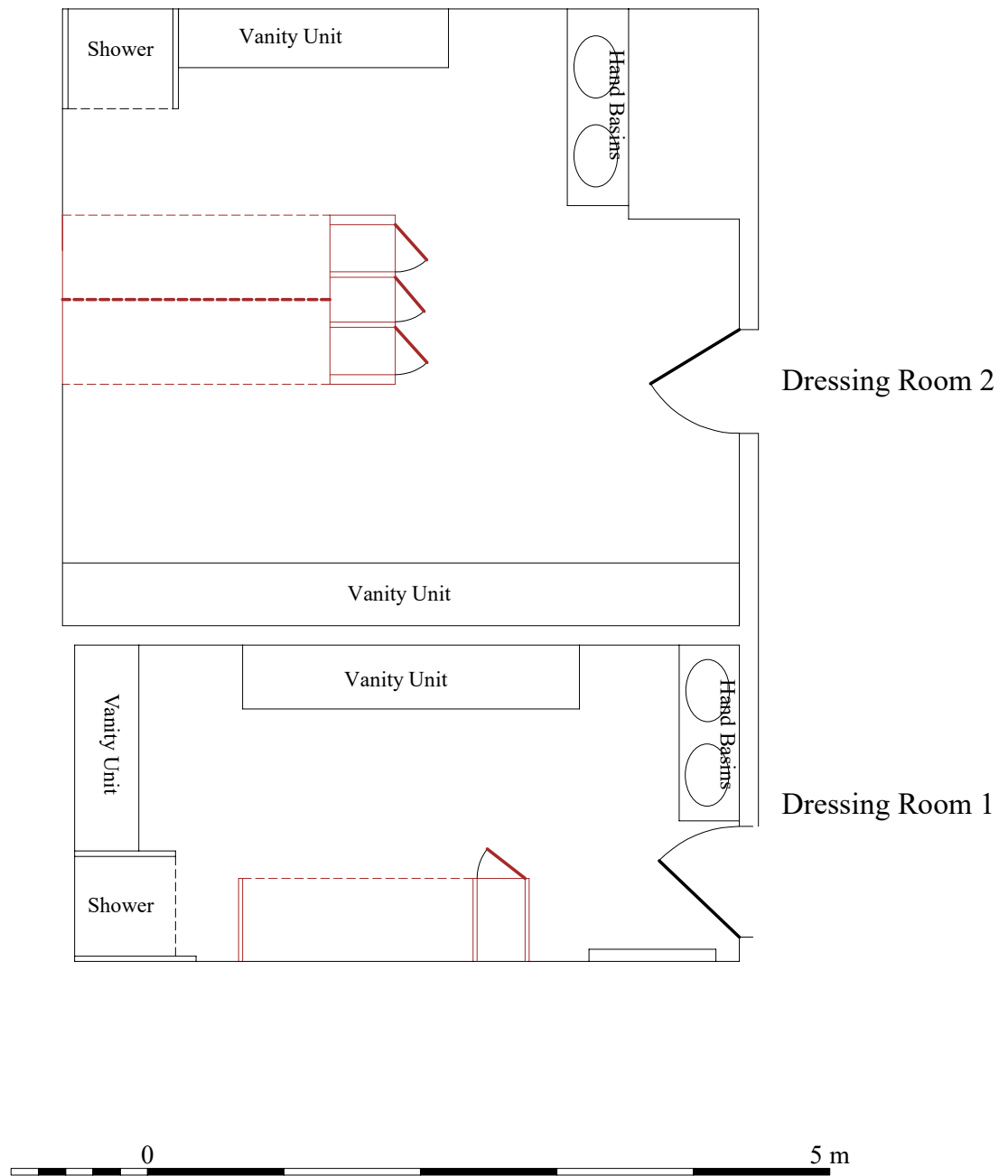


Figure 3: Plan of the Dressing Rooms
Scale 1:50

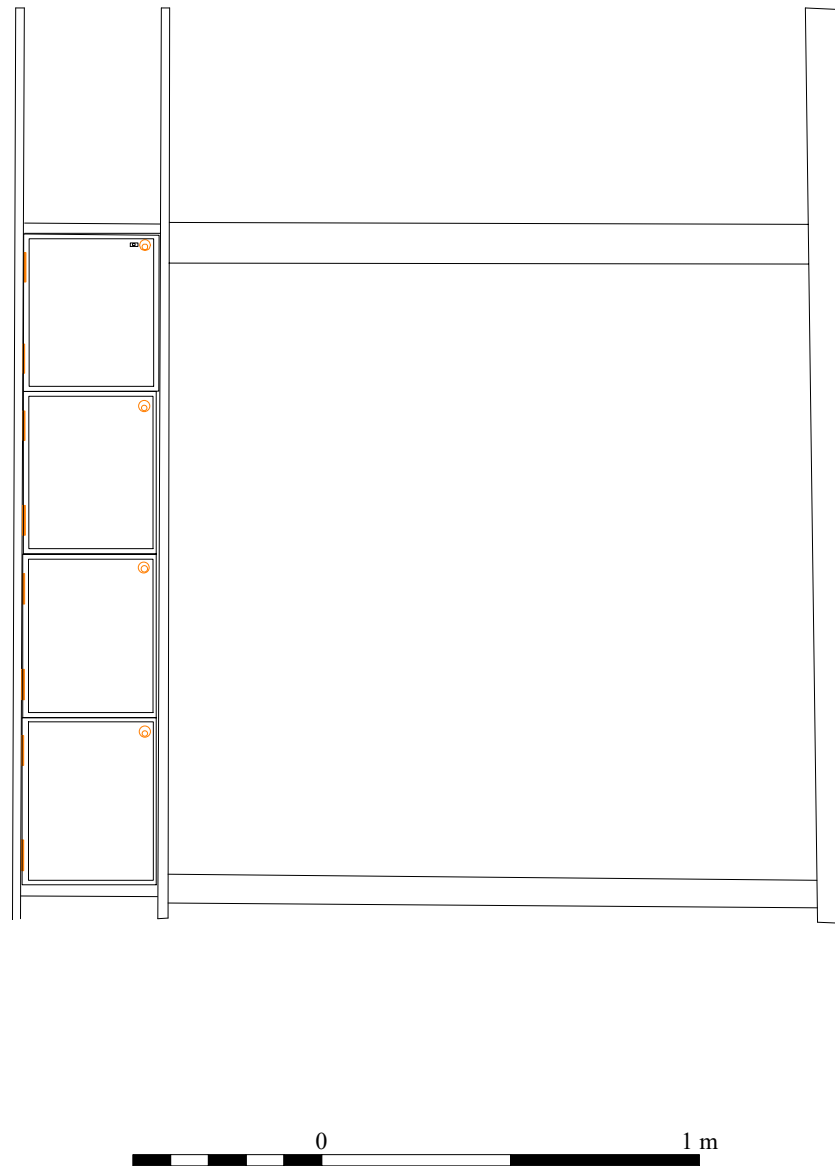


Figure 4: Locker Unit in Dressing Room 1
Scale 1:20

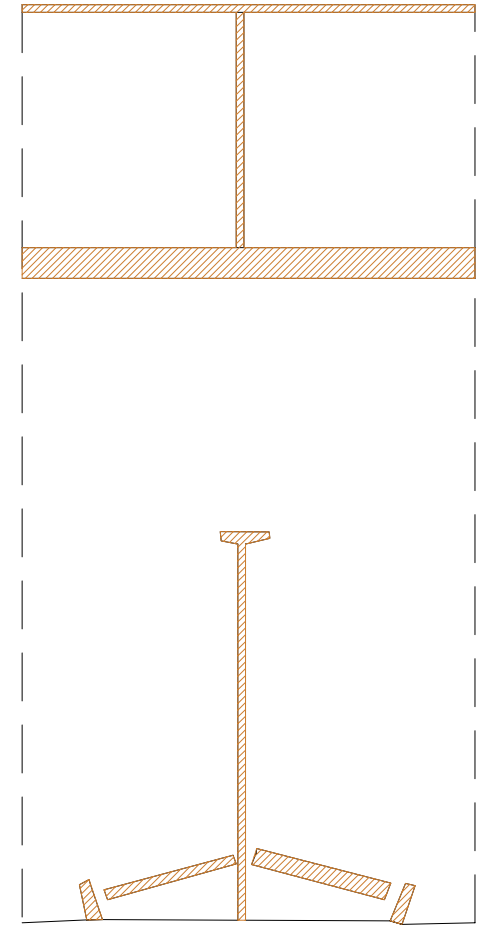
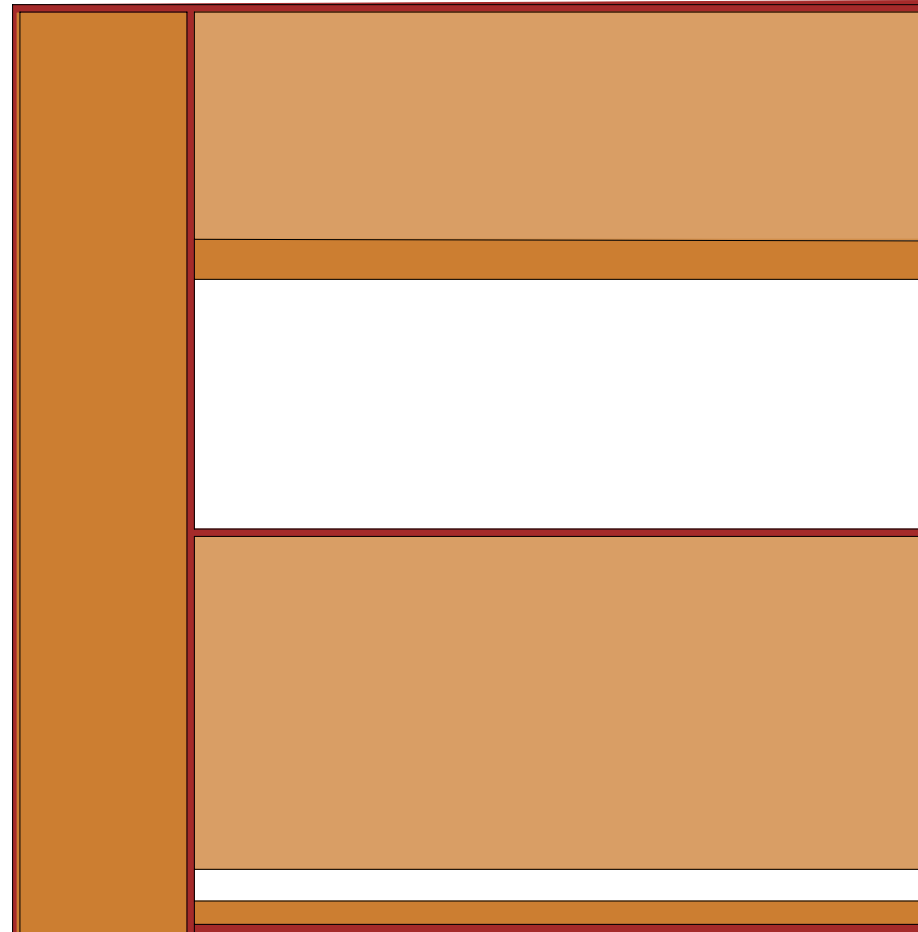
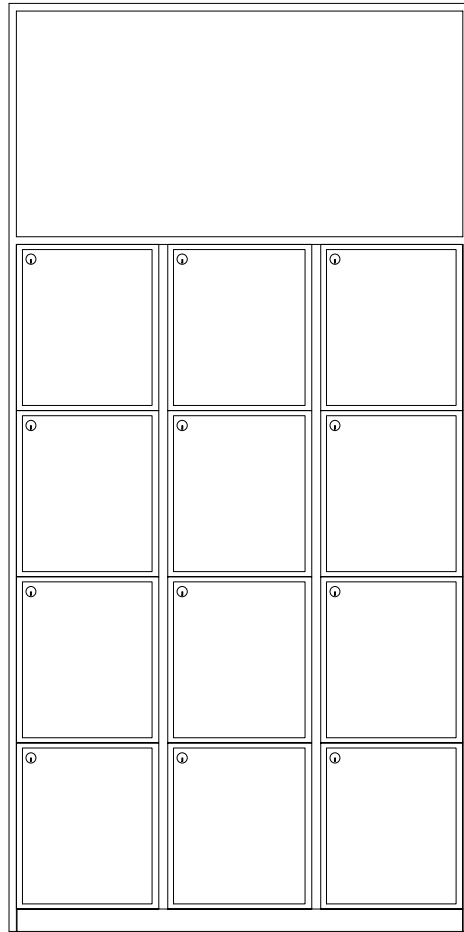
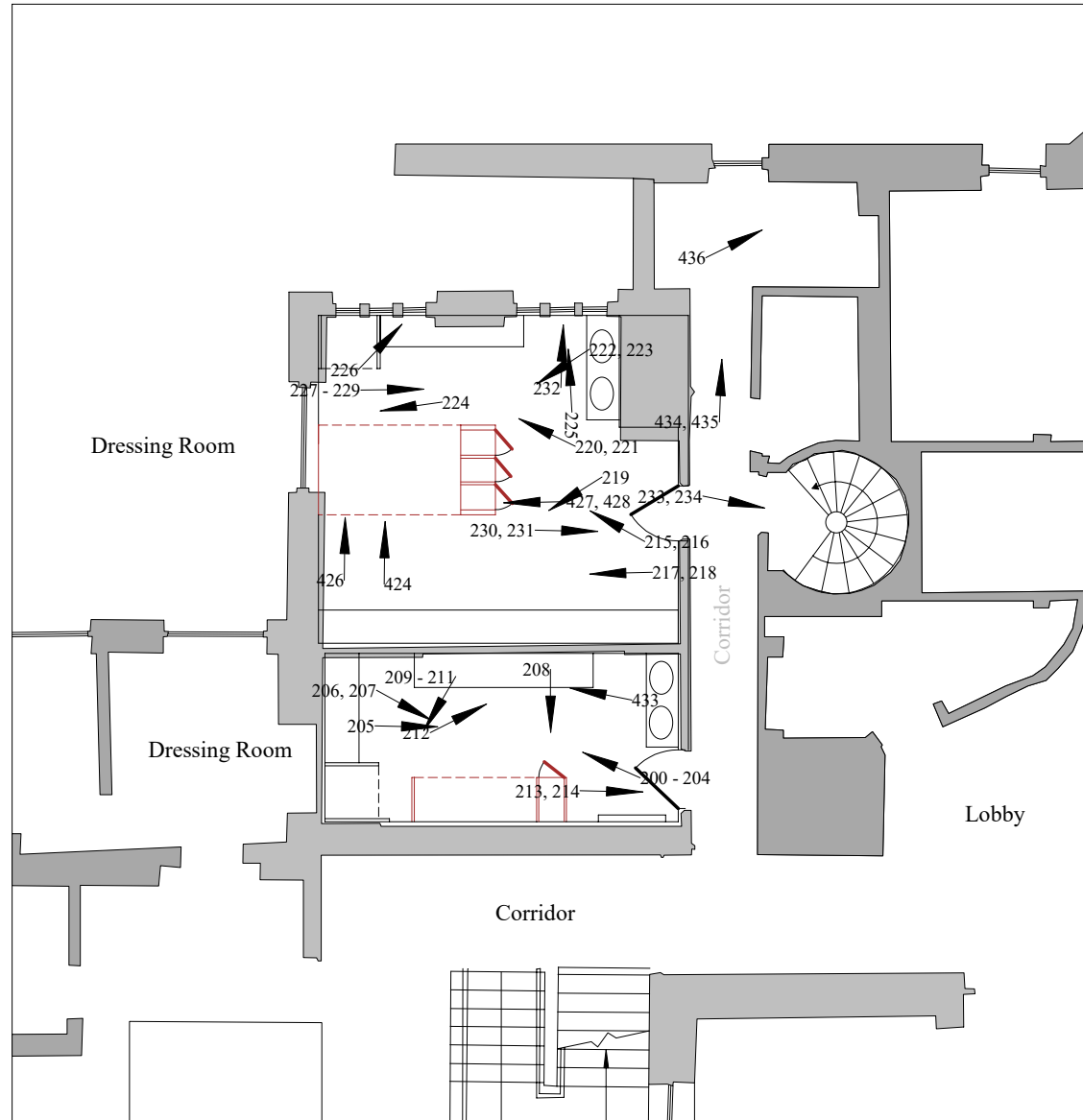
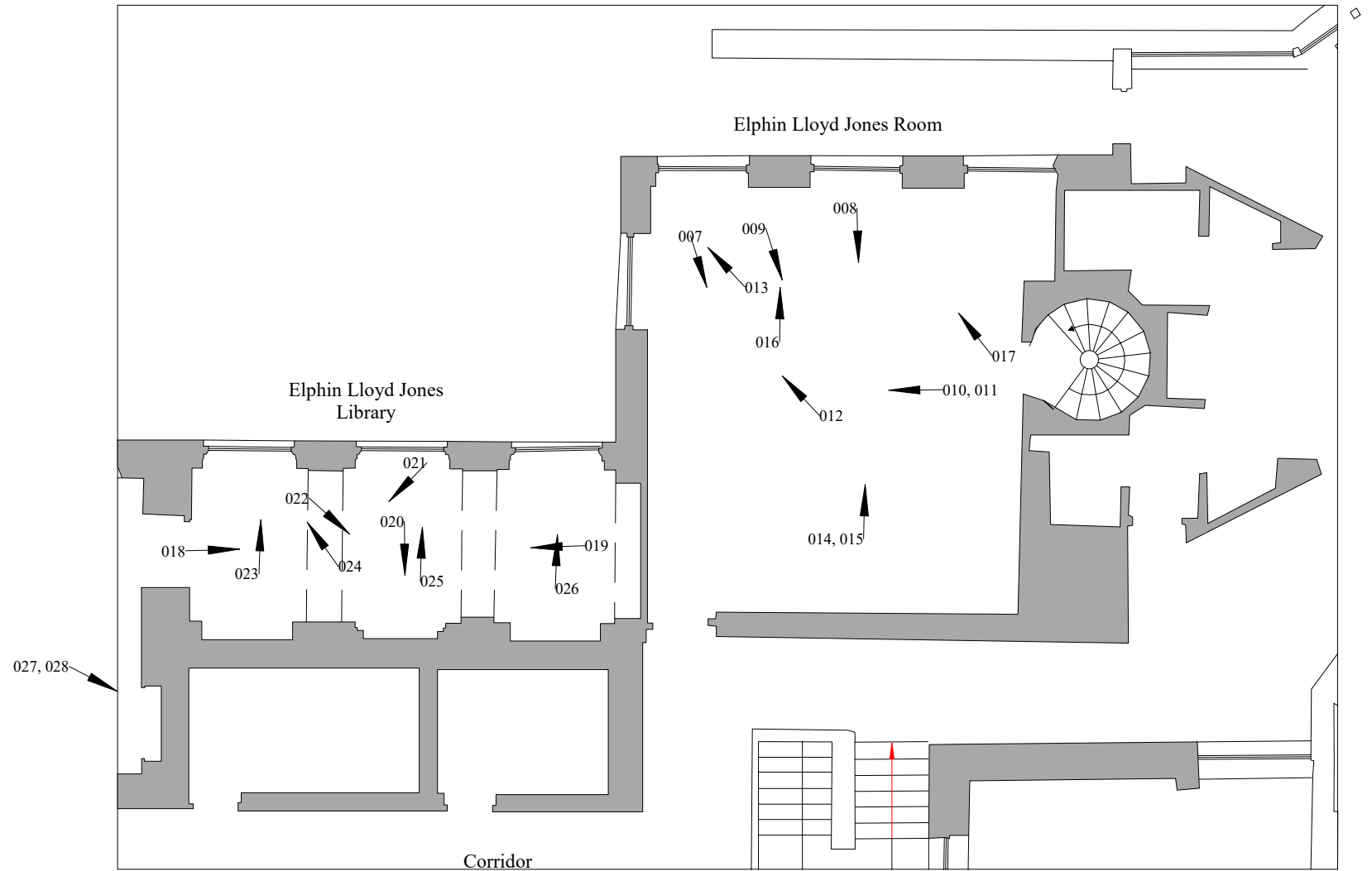


Figure 5: Locker Unit in Dressing Room 2
Scale 1:20



Ground Floor

Based on drawings 3 34 [1] 32 by Rhys Llwyd Davies



First Floor

Based on Drawing 4 34 [1]33 by Rhys Llwyd Davies



Figure 6: Location of the Photographs
Scale 1:100



Plate 1: The Elphin Jones Library, looking north



Plate 2: The Elphin Jones Library, looking south



Plate 3: Rectified composite of the eastern wall of the Elphin Jones Library



Plate 4: Furniture of the Elphin Jones Library



Plate 5: Furniture of the Elphin Jones Library



Plate 6: The central niche in the Elphin Jones Library



Plate 7: Detail of the inscription in the central niche of the Elphin Jones Library



Plate 8: Southern window within the Elphin Jones Library



Plate 9: Middle window within the Elphin Jones Library



Plate 10: Northern window within the Elphin Jones Library

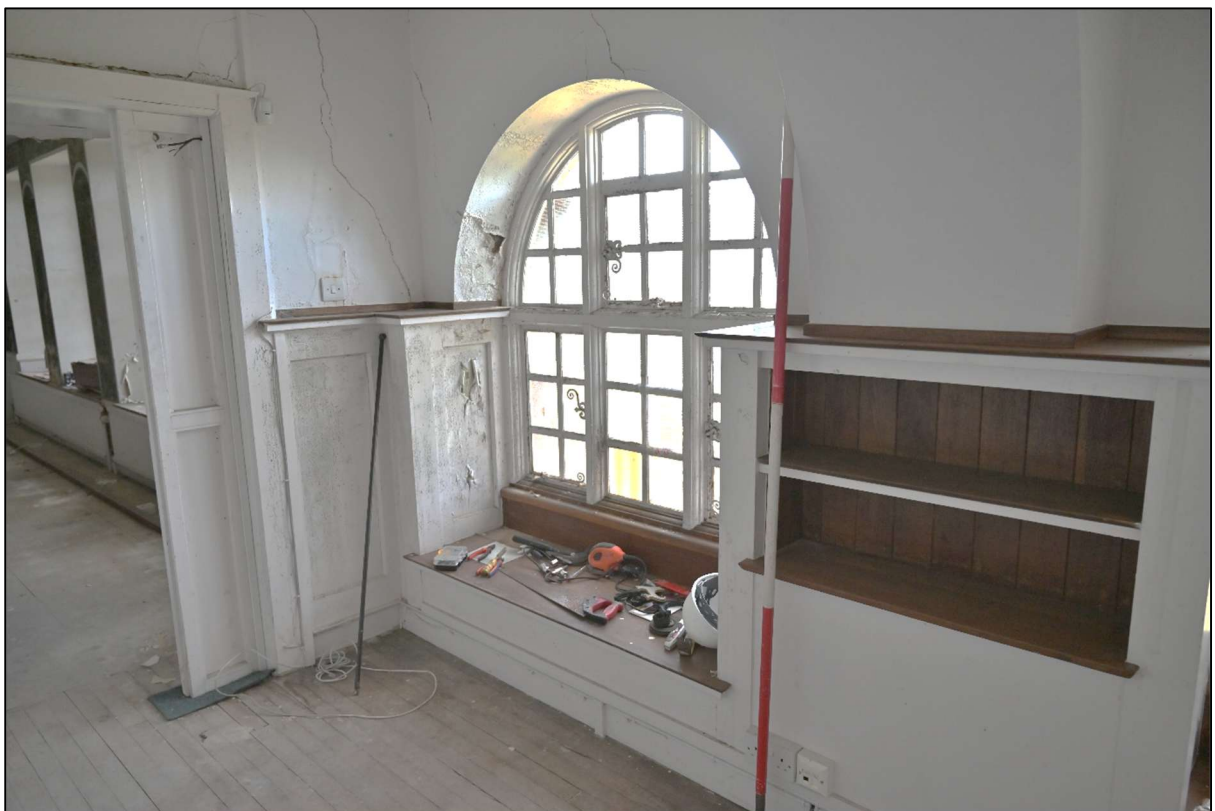


Plate 11: Shelving between the windows of the Elphin Jone Library



Plate 12: The Elphin Lloyd Jones Room, looking west



Plate 13: One of the cupboards between the windows of the Elphin Lloyd Jones Room



Plate 14: Detail of the panelling in the Elphin Lloyd Jones Room



Plate 15: Southern wall of the Elphin Lloyd Jones Room



Plate 16: Cupboard unit on the south wall of the Elphin Lloyd Jones Room



Plate 17: The eastern wall of the Elphin Lloyd Jones Room



Plate 18: Mural on the northern wall of the Staff Room

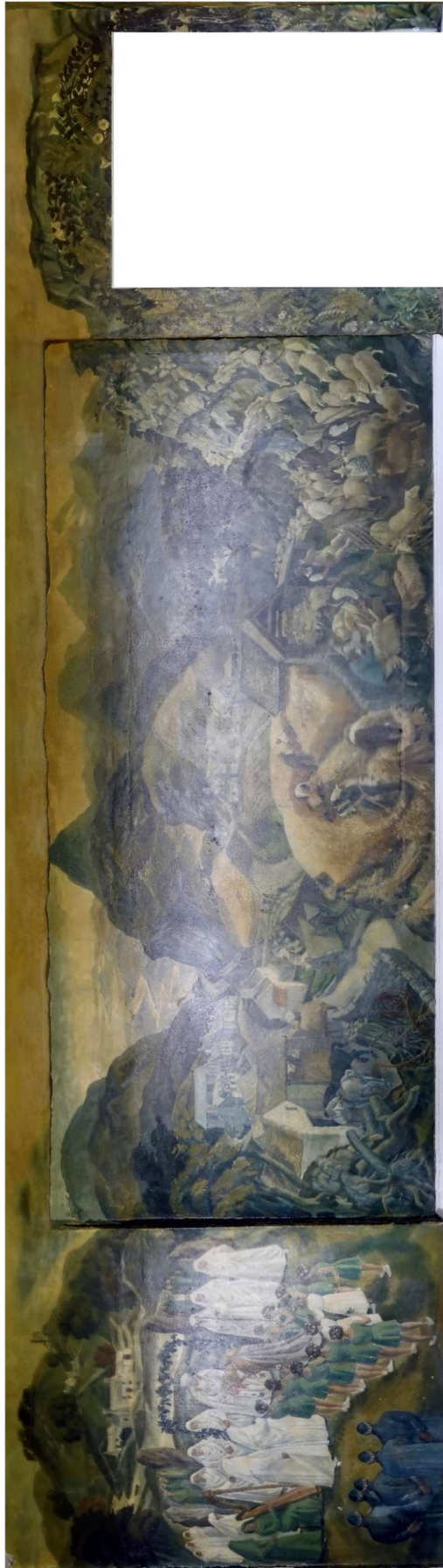


Plate 19: Mural on the eastern wall of the Staff Room

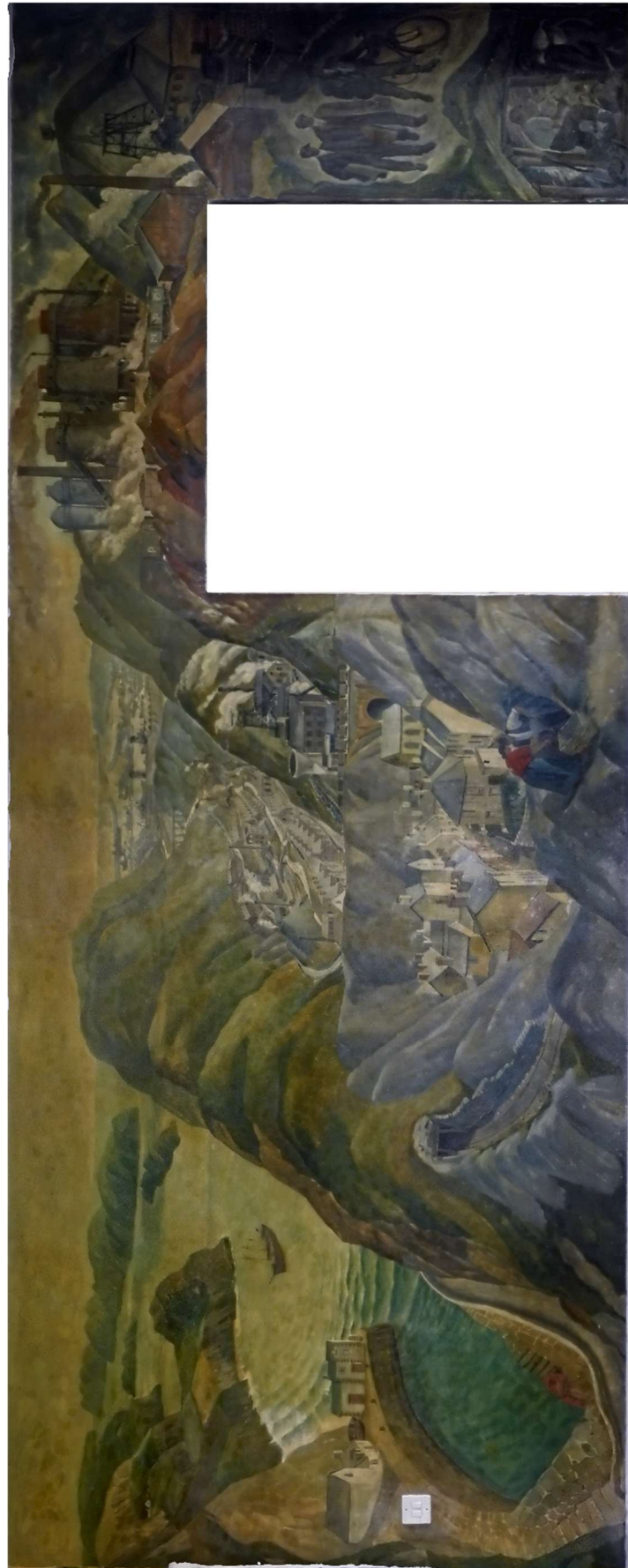


Plate 20: Mural on the southern wall of the Staff Room

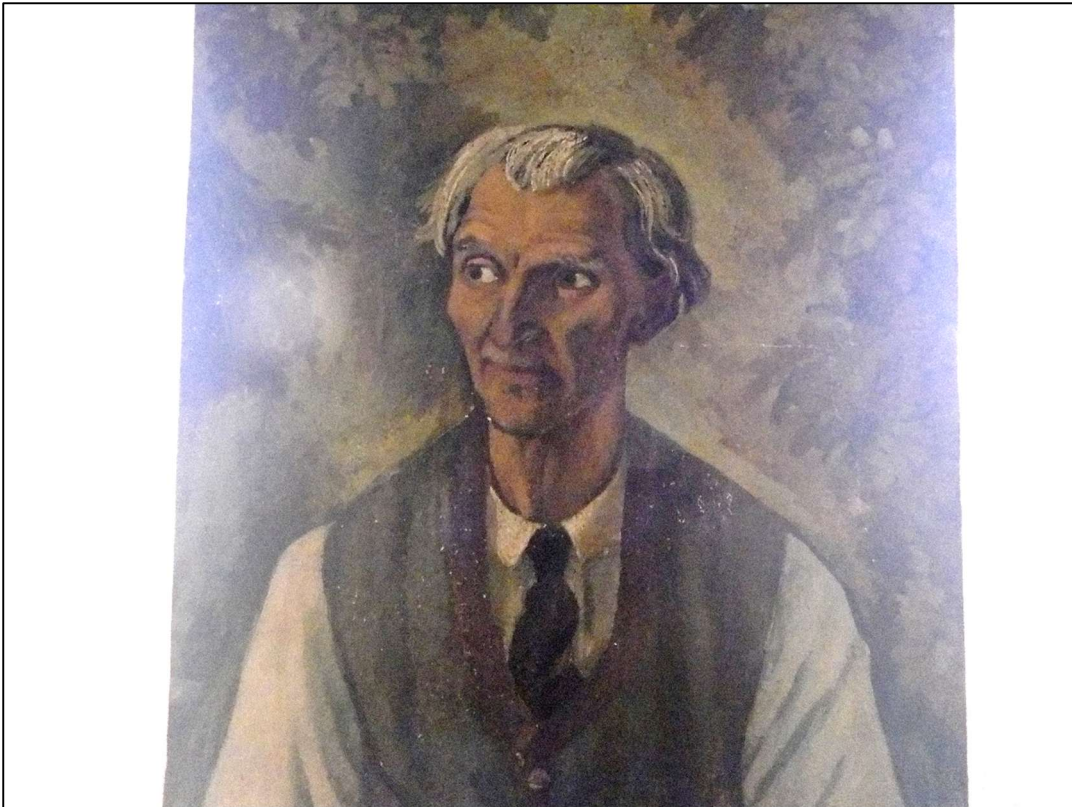


Plate 21: Character on the southern pier between the windows of the Staff Room

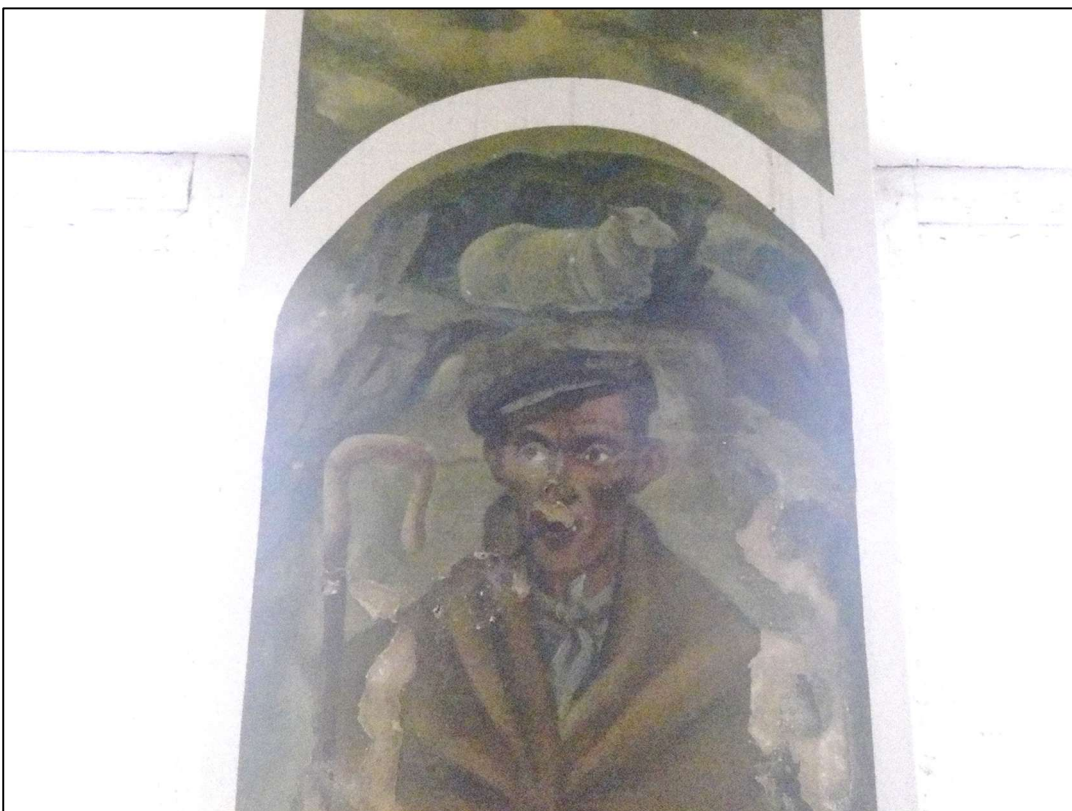


Plate 22: Shepherd on the central pier between the windows of the Staff Room

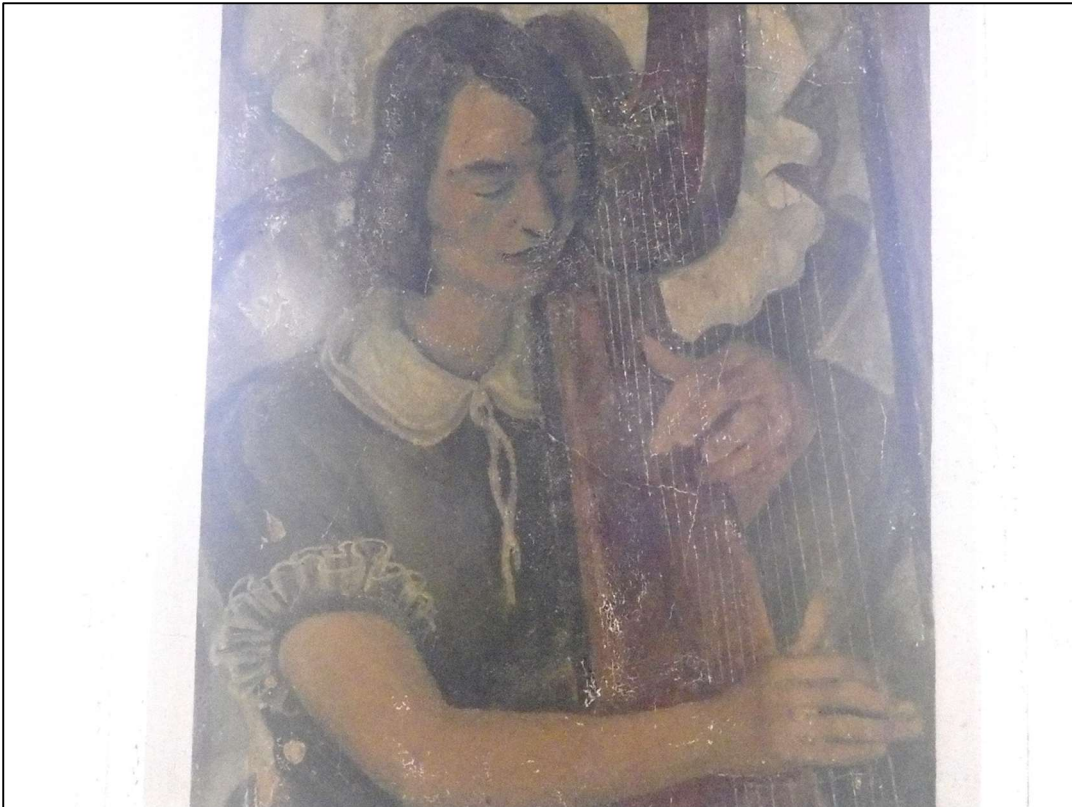


Plate 23: The Harpist on the northern pier between the windows of the Staff Room.



Plate 24: Dressing Room 1, looking south west



Plate 25: Supports for the bench of the vanity units



Plate 26: Dressing Room 1, looking NNE



Plate 27: Detail of the lockers in Dressing Room 1



Plate 28: Shower in Dressing Room 1



Plate 29: Rectified, composite image of the dresser unit in Dressing Room 1



Plate 30: The vanity unit in Dressing Room 1

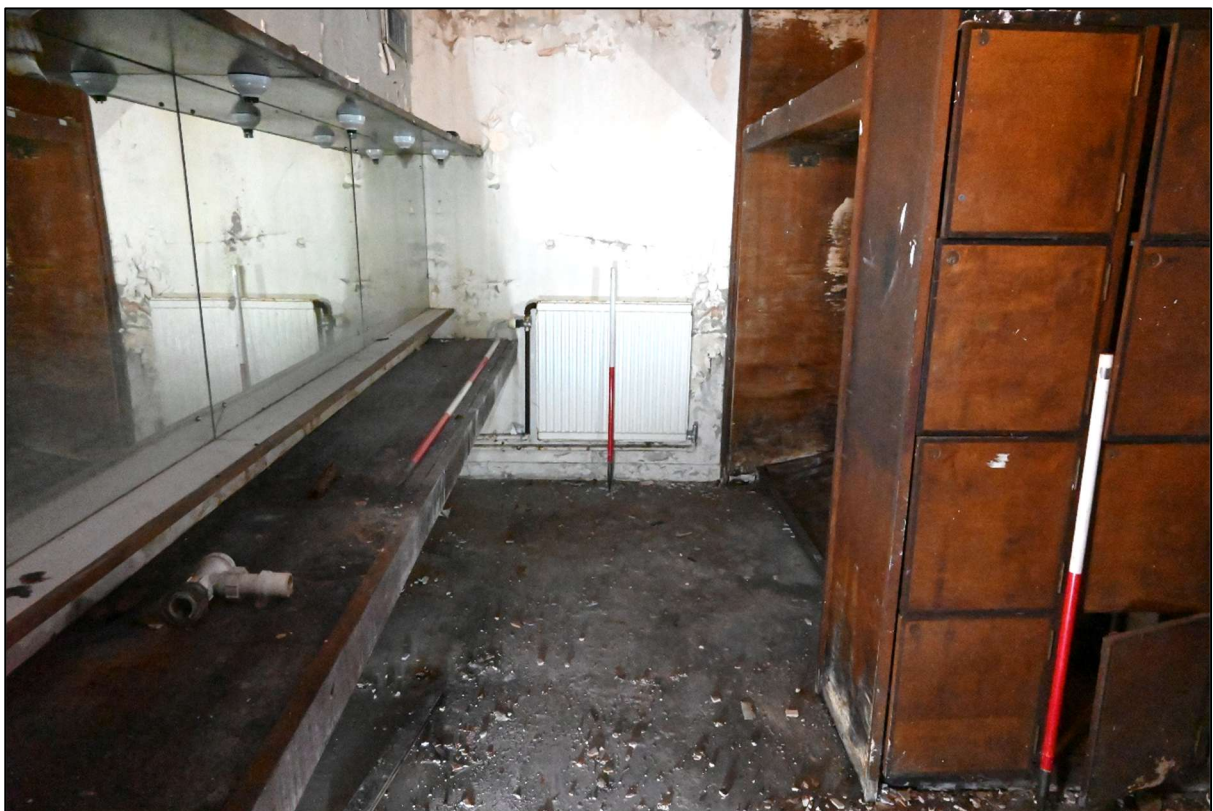


Plate 31: Vanity unit on the eastern side of Dressing Room 2



Plate 32: Vanity unit on the eastern side of Dressing Room 2



Plate 33: Vanity unit on the western side of Dressing Room 2



Plate 34: Sink unit in Dressing Room 2



Plate 35: Lockers in Dressing Room 2

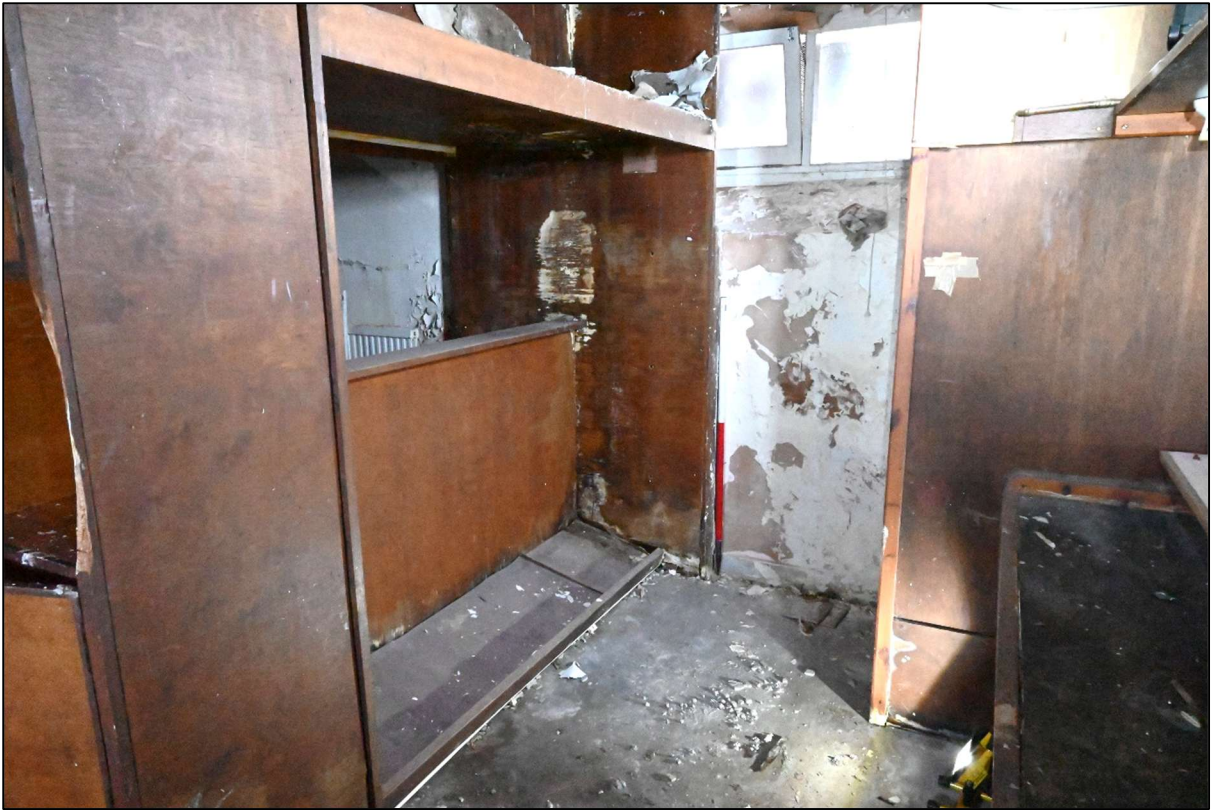


Plate 36: Western side of the dresser unit in Dressing Room 2



Plate 37: Name tag on the eastern side of the dresser unit in Dressing Room 2



Plate 38: Name tag on the eastern side of the dresser unit in Dressing Room 2

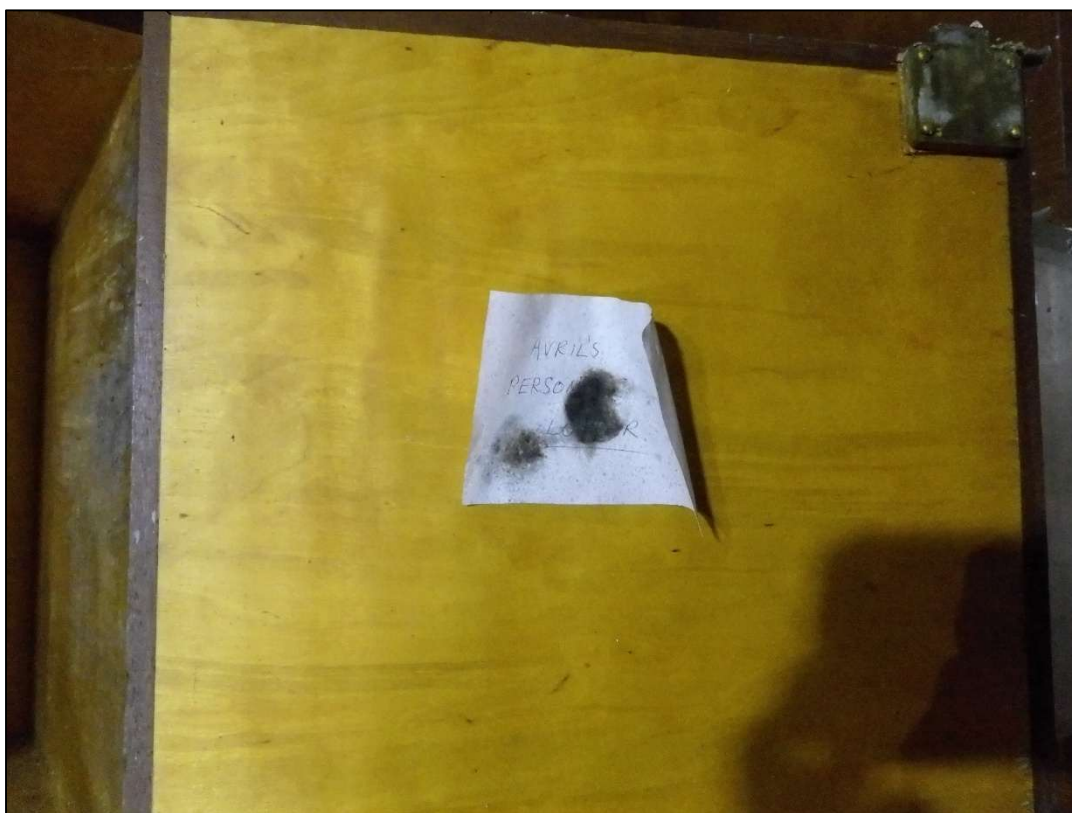


Plate 39: Post-it note on one of the lockers in Dressing Room 2



Plate 40: Mirror with lipstick name “SARA”



Plate 41: Composite, rectified image of the lockers in Dressing Room 2



Plate 42: Windows in the north west corner of Dressing Room 2



Plate 43: Window latch in Dressing Room 2



Plate 44: Spiral staircase



Plate 45: Corridor leading to the Gent's toilet

Appendix 1: Listing Description

Reference Number:	25511
Building Number:	
Grade:	II*
Status:	Designated
Date of Designation:	21/06/2001
Date of Amendment:	21/06/2001
Name of Property:	Coleg Harlech including Terrace Revetment Walls to the W
Address:	
Location:	
Unitary Authority:	Gwynedd
Community:	Harlech
Town:	
Locality:	Harlech
Easting:	257828
Northing:	330805
Street Side:	W
Location:	Set back slightly from the road within its own grounds with commanding views across the Morfa.

Description

Broad Class: Education

Period:

History:

The Coleg Harlech building originated as Plas Wernfawr and was built by the millionaire aesthete and philanthropist George Davidson in 1908 to designs by the Scottish Arts and Crafts architect George Walton; a Great Hall wing, added in 1910, was destroyed by fire in May 1968. The total building costs were reputed to have been around £80,000. Davidson had settled in Harlech at the turn of the century, initially living at nearby Plas Amhurst before building Plas Wernfawr. He moved in intellectual and avant-garde artistic circles, and soon Plas Wernfawr became the focus of a community of like-minded friends several of whom settled and built their own houses. Amongst these were the composer Sir Greville Bartock, A P Graves (the War poet Robert Graves' father), and the eminent American photographer Alvin Langdon Coburn. Various members of the Fabian Society were associated with the Harlech group, most notably Sir George Bernard Shaw, who was a frequent visitor. In addition to Plas Wernfawr, Davidson built the nearby St David's Hotel in 1910, also to designs by Walton; this was gutted by fire in 1922 and was subsequently rebuilt. In 1925 Davidson decided to relocate to the south of France. Although valued at well over £60,000, Davidson agreed to sell the house for £7,500 to Henry Gethin Lewis, who donated and endowed the building for use as the new Coleg Harlech. The 'College of the Second Chance' was the brain-child of Dr Thomas Jones,

Deputy Secretary to the Cabinet under Lloyd George and was opened in 1927; the first Warden was Sir Ben Bowen Thomas. A new library wing was added c1939 to designs by the architect Griffith Morris of Porthmadog. The Harlech Theatre was erected on the site of the Great Hall in 1973 following the latter's destruction. It was designed by Colwyn Foulkes and Partners.

Exterior:

College complex consisting of the former Plas Wernfawr with later library wing adjoining via a link block to the L. The main (former house) section is in Arts and Crafts Georgian style: it is of 2 principal storeys and is constructed of slatestone with squared, snecked, quarry-dressed facings; tooled granite dressings and chamfered plinth to ground-floor sill height. Slate roof with tiled ridge and shallow gabled sides with slab-coped parapets; plain capped end chimneys, with single off-centre chimneys to front and rear elevations. The front (E) elevation is symmetrical and of 9 bays with a large broad pediment surmounting the central 7 bays; this has a dentilated stringcourse and a central oculus with small, square flanking lights. Central entrance with 3 approaching parapeted steps; leaded wooden semi-circular porch canopy over the entrance; 8-panel double doors. Recessed, unhorned sash windows with thick glazing bars, 18-pane to the ground floor and 12-pane to the first floor, the latter with projecting granite sills. The original lead hoppers are retained to the R and L; these have (in raised letters and figures): 'Plas Wernfawr.' (L) and '1908' (R). The rear elevation of this primary range is similar to the front, except that here there is a large semi-circular bow occupying the 3 right-hand bays of the ground floor; this with plain parapet and flat roof, and 5 sashes, as before. Square leaded canopy porch to the entrance, supported on simple decorative Arts and Crafts bracketed metal supports; 20-pane glazed French doors. Seven steps descend from this down to a broad terrace. Similar hoppers survive on this facade, that on the L with the initials 'GD' (for George Davidson) and on the R 'George Walton, Architect.' A 3-bay single-storey link block adjoins this elevation to the L with a further 3-bay section advanced beyond this. These are 1910 additions and formerly connected with the (now lost) Great Hall; they now abut the theatre. Each section has arched transmullioned windows with small-pane glazing; plain basement lights below. Adjoining the entrance facade flush to the L is a 1930s link block connecting the former Plas Wernfawr with the later library wing. The link block is of rock-faced limestone and copies the style of the earlier work. The first floor has 3 pairs of 12-pane sashes. The ground floor has a single-storey advanced section returning at the R in a rounded entrance porch with concrete canopy and recessed double doors; four plain 2-pane sashes to the L (serving WCs internally). The library wing itself is of similar construction and detail and is advanced in front of the link block. It consists of a large, 2-storey rectangular block with shallow gabled, parapeted ends and a semi-circular projection to the L (SW gable); squat end chimney to the R. High chamfered plinth and dentilated stringcourse above narrow full-height windows, 4 each to the sides and 5 to the bowed end; square quarry glazing and wooden opening sections. The SW gable has a circular oculus in the apex, above the bow. The rear facade of the primary range gives access to a large rectangular terrace with paved paths and grassed squares. The terrace has rubble revetments with chamfered, rock-faced granite copings, approximately 1m high on the terrace side and with a 5m fall on the down-hill side. The terrace has a central bowed recess and similar bows extruded at the returns to R and L. Theatr Ardudwy is attached to the main building via the additions of 1910. Steel frame and concrete, with copper sheet cladding to auditorium, the materials and modular elements of the structure strongly expressed according to Brutalist principles. The design is dominated by the part circular, part hexagonal auditorium, beneath which shelter two tiers of meeting rooms with continuous bands of aluminium framed windows and rough concrete panels.

Interior:

The primary range has an entrance hall with grey figured marble floor having black marble banding. The walls have large-field panelling treatment in cement, with heavy moulded cornicing. To the L of the entrance is a triple-arched niche arrangement with a small fireplace to the central one; simple

brass grate. A staircase leads off to the R; of oak and of well-type, though partly obscured, with columnar newels and balusters and a shallow convex rail. Balustraded rail to first floor gallery, with a similar straight flight leading to a mezzanine gallery at the L end; this with arched entrance. The first-floor stairhead has a tall groin-vaulted ceiling with high oculi at the ends. The main rooms have moulded 8-panel doors. The ground floor Staff Room has figurative wall paintings to all four walls. Leading off to the R is a 3-bay rectangular room with round-arched bay divisions; fitted bookcases and window seats, with further, glazed bookcases to the opposite wall. Above these are blind, round-arched niches, that to the centre with finely-carved oak memorial panel to Elphin Lloyd Jones, son of the founder. This has Arts and Crafts carving, including foliate and zoomorphic detail as well as linenfold; central gilded and carved cartouche with initials and raised inscription band below. The library wing has a counter-changed figured grey and off-white marble floor to the entrance hall, with marginal banding. 6-panel oak doors, vertically-panelled; plain oak architraves. Double-doors to the library proper, with decoratively-leaded circular lights to the upper sections and fish-scale glazing to a rectangular overlight. Restrained Art Deco interior with shallow segmental ceiling having broad moulded ribs dividing the main area into 4 bays; 3-bay ceiling to the bowed end bay, longitudinally divided. The library has a gallery running around the 4 sides and an open central space. The gallery has Art Deco style blackened metal railings with brass rail; modern uplighters. Original fitted oak bookshelves throughout, with simple contemporary oak desks and splat-back chairs. The gallery is accessed via a stair to the L of the entrance. In the centre of the end bow is a leaded glazed panel depicting a personification of Flora. In the theatre, the circular foyer is the centrepiece of the upper ground floor; above it is the stage level of the theatre, from which rises the raked seating. The building retains original detail including terrazzo tiled flooring and timber-slatted ceilings.

Reason for designation:

Listed Grade II* for its special interest as a fine early C20 Arts and Crafts house designed by the architect George Walton, with 1930s additions and alterations for Coleg Harlech by Griffith Morris, architect of Porthmadog. The former home of the millionaire philanthropist and aesthete George Davidson; since 1927 Coleg Harlech. The theatre is a striking and unusual example of architectural Brutalism, using form and structure to give clear expression of purpose.

Appendix 2: List of Photographs in the Archive

File	Scale	Looking	Description
CH24_007	2 m	ENE	Glazed cupboard in the Elphin Lloyd Jones Room
CH24_008	2 m	ESE	Glazed cupboard in the Elphin Lloyd Jones Room
CH24_009	2 m	ENE	Glazed cupboard in the Elphin Lloyd Jones Room
CH24_010	2 m	SSW	Southern end of the Elphin Lloyd Jones Room
CH24_011	2 m	SSW	Southern end of the Elphin Lloyd Jones Room
CH24_012	2 m	SW	SW corner of the Elphin Lloyd Jones Room
CH24_013	2 m	SW	Panelling in the SW corner of the Elphin Lloyd Jones Room
CH24_014	2 m	WNW	Western side of the Elphin Lloyd Jones Room
CH24_015	2 m	WNW	Western side of the Elphin Lloyd Jones Room
CH24_016	2 m	WNW	Cupboard on western side of the Elphin Lloyd Jones Room
CH24_017	2 m	SW	Cupboard on western side of the Elphin Lloyd Jones Room
CH24_018	2 m	NNE	Elphin Lloyd Jones Library
CH24_019	2 m	SSW	Elphin Lloyd Jones Library
CH24_020	none	ESE	Crest in the Elphin Lloyd Jones Library
CH24_20a	none	ESE	Detail of the crest in the Elphin Lloyd Jones Library
CH24_021	2 m	SE	Cupboard on the eastern side of the Elphin Lloyd Jones Library
CH24_022	2 m	NE	Cupboard on the eastern side of the Elphin Lloyd Jones Library
CH24_023	none	WNW	Southern window the Elphin Lloyd Jones Library
CH24_024	2 m	SW	Southern window the Elphin Lloyd Jones Library
CH24_025	none	WNW	Middle window of the Elphin Lloyd Jones Library
CH24_026	none	WNW	Northern window of the Elphin Lloyd Jones Library
CH24_027	1 m	NE	Fire place in the Staff Room
CH24_028	1 m	NE	Fire place in the Staff Room
CH24_029	none	E	Lead rain water hopper embossed with the words “PLAS WERN FAWR”
CH24_200	2 m	SSW	Vanity unit in Dressing Room 1
CH24_201	2 m	SSW	Vanity unit in Dressing Room 1
CH24_202	2 m	SSW	Vanity unit in Dressing Room 1
CH24_203	2 m	SSW	Vanity unit in Dressing Room 1
CH24_204	2 m	SSW	Vanity unit in Dressing Room 1
CH24_205	1 m	NNE	Sink Unit in Dressing Room 1
CH24_206	2 m	NE	Locker unit in Dressing Room 1
CH24_207	2 m	NE	Locker unit in Dressing Room 1
CH24_208	1 m	E	Detail of locker doors in Dressing Room 1
CH24_209	2 m	SE	Shower unit in Dressing Room 1
CH24_210	2 m	SE	Shower unit in Dressing Room 1
CH24_211	2 m	SE	Shower unit in Dressing Room 1
CH24_212	1 m	NNW	Vanity Unit in Dressing Room 1
CH24_213	2 m	E	Door to Dressing Room 1
CH24_214	none	E	Detail of label on the door to Dressing Room 1
CH24_215	1 m	SW	Lockers in Dressing Room 2
CH24_216	1 m	SW	Lockers in Dressing Room 2
CH24_217	2 m	SSW	Eastern side of Dressing Room 2 showing the vanity unit
CH24_218	2 m	SSW	Eastern side of Dressing Room 2 showing the vanity unit
CH24_219	2 m	SE	Eastern side of Dressing Room 2 showing the vanity unit
CH24_220	2 m	SW	Western side of Dressing Room 2 showing the vanity unit
CH24_221	2 m	SW	Western side of Dressing Room 2 showing the vanity unit
CH24_222	1 m	S	Western side of the Locker/Dresser unit in Dressing Room 2

File	Scale	Looking	Description
CH24_223	1 m	S	Western side of the Locker/Dresser unit in Dressing Room 2
CH24_224	none	SSW	Window in the southern wall of Dressing Room 2
CH24_225	none	W	Window latch on the western window of Dressing Room 2
CH24_226	none	NW	Brackets holding the upper shelf of the western vanity unit in Dressing Room 2
CH24_227	1 m	NNE	Sink unit in Dressing Room 2
CH24_228	1 m	NNE	Sink unit in Dressing Room 2
CH24_229	1 m	NNE	Sink unit in Dressing Room 2
CH24_230	none	NNE	Door to Dressing Room 2
CH24_231	none	NNE	Door to Dressing Room 2
CH24_232	none	W	Western windows in Dressing Room 2
CH24_233	none	NNE	Spiral staircase
CH24_234	none	NNE	Spiral staircase
CH24_274	none	NE	Scar from the removed hanging rail from the Locker/Dresser unit in Dressing Room 1
CH24_403	none	S	Scar from the removed hanging rail from the Locker/Dresser unit in Dressing Room 2
CH24_421	none	W	Window latch on the western window of Dressing Room 2
CH24_424	none	ENE	Label on the shelf of the Locker/Dresser unit of Dressing Room 2
CH24_426	none	ENE	Label on the shelf of the Locker/Dresser unit of Dressing Room 2
CH24_427	none	SSW	Label on one of the locker doors in Dressing Room 2
CH24_428	none	SSW	Label on one of the locker doors in Dressing Room 2
CH24_431	none	SW	Name in lipstick on the mirror of the western vanity unit in Dressing Room 2
CH24_433	now	NW	Supports to the shelf of the western vanity unit in Dressing Room 2
CH24_434	2 m	WNW	View into the gent's toilet from the corridor
CH24_435	2 m	WNW	View into the gent's toilet from the corridor
CH24_436	none	NNW	Bracket in the gent's toilet