

HERCOPY
eas

Engineering Archaeological Services Ltd

***The Old Colliery, Pentre Berw
Building Survey***

March 2006

EAS Client Report 2006/3

*Survey Commissioned
by
Dewis
On behalf of
The RSPB.*

*Surveyed
by
I.P. Brooks and K. Laws
Engineering Archaeological Services Ltd.*

Event PRN 43792

*registered in England
N° 2869678*

*The Old Colliery, Pentre Berw
Building Survey*

March 2006

EAS Client Report 2006/3

CONTENTS

Introduction:

NGR

Location and Topography

Archaeological Background

Aims of Survey

SUMMARY

Methodology:

Survey Results:

House Range

Barn Range

Smithy

Chimney

Conclusions

Acknowledgements

Appendix 1: Summary of digital photographs

List of Illustrations

Figure 1: Location

Figure 2: General Survey

Figure 3: House Range, Ground Floor

Figure 4: House Range, First Floor

Figure 5: Barn Range, Ground Floor

Figure 6: Barn, Range, First Floor

Figure 7: Smithy and Chimney

Figure 8: Front and Back Elevations of House

Figure 9: End Elevations of House

Figure 10: Front and Back Elevations of Barn

Figure 11: End Elevations of Barn

Figure 12: Chimney Elevations

Figure 13: Possible Development of House

Figure 14: Possible Development of Barn.

Plates:

Plate 1: General view of the house range

Plate 2: General view of the barn range

Plate 3: General view of smithy

Plate 4: General view of the colliery chimney and smithy

Plate 5: Oven in the corner of the earliest house

Plate 6: Stone ridge piece

Plate 7: Slate lining in the corner of the original house

Plate 8: Gable wall of the original house showing the extension

Plate 9: Oven/range in the main house

Plate 10: Oven door

Plate 11: Vent in back of fireplace

Plate 12: Cast iron fire surround in lower bedroom

Plate 13: Corrugated lining to lower bedroom

Plate 14: Detail of external lime wash

Plate 15: Pig sty

Plate 16: External stairway to barn

Plate 17: Sealing along upper floor in the barn

Plate 18: Main arched doorway to barn

Plate 19: Doorway to chimney

Plate 20: Vent in chimney

Plate 21 North west face of chimney.

NGR

Centred on SH 4636 7248

Location and Topography (Figure 1)

The Old Colliery at Pentre Berw is approximately 3 km south of Llangenfni and 0.5 km to the west of Pentre Berw village (Figure 1). It sits within the Maltreath Marsh to the south of a property known as Tai'r-gors. The site consists of the remains of a farmstead together with a stone chimney which was originally related to a steam pump for the colliery which was based in the north west corner of the site.

The surviving building remains include a house range, barn range, the highly disturbed remains of a smithy and the chimney for the steam pump.

Archaeological Background

The Berw Colliery was operating from the early 1800's with archives in the National Library of Wales and the Gwynedd Council Archives having references to the colliery as early as AD 1811. Indeed the colliery must have been established at this date as a letter between O.A Poole and W. Poole (Gwynedd Archive X/Poole/5326) discusses the proposal for building a railway or canal to serve the colliery. The colliery, however proved to be relatively short lived as by AD 1891 the 1:10,560 Ordnance Survey Map shows the Berw Colliery as disused.

The farmstead also on the site was probably also operating at the same time as the colliery and it survived as a working farm as recently as the 1980's (J. Parry (the grandson of the last tenant), pers. comm.).

The buildings have suffered since the 1980's with the roofs on all the buildings having collapsed, or been taken down. Indeed the smithy building has been reduced to little more than a pile of rubble with only a few courses of masonry surviving. The AD 1891 1:10560 Ordnance Survey map would also appear to show other buildings on the site with another potential range parallel to the house.

The RSPB now own the site and wish to initially stabilise the remains with the future potential for converting them into a visitor centre.

The remains are protected as a Scheduled Monument

Aims of Survey

To record the standing remains before they are conserved or reconstructed.

SUMMARY OF RESULTS.

The remaining buildings at The Old Colliery have been recorded. It has also been possible to suggest a possible development for the agricultural buildings on the site.

Methods

A general ground plan of the site was obtained using a Geodolite 504 Total Station and recording the data with NRG Survey Package v8. Internal details within the buildings were recorded by annotating the survey drawing produced by the total station.

The elevations were recorded with a Leica TCR705xr Reflectorless Total Station and the resultant drawings checked and annotated by hand. Final drawings, both plans and elevations, were produced using TurboCad v9.

In addition photographs of the structures were taken in digital, colour slide and black and white film to illustrate the drawn record. Where suitable all photographs included a metric scale.

Survey Results:

The surviving structures at The Old Colliery, Pentre Berw consist of a house range (Plate 1), barn (Plate 2), smithy (Plate 3) and colliery chimney (Plate 4) within an enclosure which is walled on three sides (Figure 2). The site of the colliery shaft was probably in the western corner of the enclosure and is now marked by a concrete block.

Both the house and barn ranges faced east, away from the industrial remains.

House Range

The examination of the fabric of the house range would suggest that it developed over time. The earliest part of the structure would appear to be a single storey building approximately 6.5 x 5.2 m in size (Figure 3, A). It has the remains of an oven in the south west corner of the single room (Figure 3, B, Plate 4) which was served by a chimney in the centre of the southern wall. On the western side there is a blocked window and a door in the north west corner. The eastern side contained a door and two windows. Remains of the roof found within this building would suggest that it had a slate roof with stone ridge pieces. The slates were approximately 330 x 160 mm in size and appear to have been partly held down with mortar. The ridge pieces were well made and up to 1.30 m long (Plate 6). This part of the house range was used

as a chicken shed and for general storage in its last phase (J. Parry pers. comm.) which probably accounts for the partial slate lining in the north west corner of the room (Plate 7). Large slates 300 x at least 500 mm were used for this lining.

An extension to the south (Figure 3, E) consisted of a low, single storey building with a chimney on its southern gable. Now very unstable it originally had a doorway both to the east and west, the western doorway being blocked at some time. The function of this structure is unknown, but the presence of a chimney may suggest either a domestic use or a small workshop.

The main domestic range, particularly immediately before the building became disused was at the northern end of the range. It consisted of three ground floor rooms (Figure 3, F, G and H) and a single first floor bedroom at the northern end (Figure 4, I). It is clear that this building was attached to an existing structure as it has been built over the slate roof of the original building (Plate 7). This end of the range was roofed in slate with ceramic ridge pieces. The slates were approximately 180 x 350 mm in size and had two holes at one end for fixing to the roof. This was generally achieved with small wooden pegs, although it would appear that repairs were carried out using iron nails.

In its last phase Room F was used as a general living room (J. Parry pers. comm.), whilst it had no formal fireplace scorching to the southern wall would suggest the presence of a freestanding stove in this room. The main central room (Figure 3, G) had an oven or range within a fireplace centrally placed along the southern wall (Plate 9). The cast iron door to the oven survives in the corner of the room (Plate 10). The impression is given by the remains that this range may have been inserted into an existing fireplace. A deliberate hole in the back of the fireplace joining it to Room F (Figure 3) is difficult to explain, its appearance is similar to the ventilation slots in the barn range, but its position would suggest some sort of flue or opening into the chimney (Plate 11). Adjacent to the range there is the remains of a cupboard.

The northern end of the room was sub-divided by a wooden screen (Figure 3, J) behind which was the

entrance hall (Figure 3, K), stairs to the upper bedroom and an under stair cupboard (Figure 3, L).

Both the windows to the east and west within Room G (Figure 3, M and N) appear to have been fitted into earlier openings which were possibly doorway. This may suggest that the current main door (Figure 3, O), may be a later feature. The wall between Room G and Room H appear to have been added in, possibly suggesting a remodeling of this end of the house range including the conversion of the doors (M and N) to windows, the insertion of a new front door and the dividing of the main room to produce a ground floor bedroom at the north end of the building.

Room H (Figure 3) was used as a bedroom at one stage (J. Parry *pers. comm.*) and included a fireplace in its northern wall. The cast iron surround for this fireplace survives partly buried by the debris (Plate 12). The final phase of use, however, does not appear to have been domestic as the walls have been partly covered in corrugated iron sheets (Plate 13). Above Room H was a single, unheated bedroom (Figure 4, I).

Externally it would appear that at least the front of the building had been coated with lime wash at several times in the past. At least one phase of these coating was also coloured pale pink (Plate 14). The last phase of maintenance to the property is also evident with metal plates added to the two main door frames to cover the rotting at ground level. The northern end of the house range also had iron guttering at least on the eastern side.

Barn Range

The barn covers an area of approximately 16.36 x 5.66 m and has a lean to structure 1.9 x 2.6 m, attached to its southern end. This lean to (Figure 5, P) was a pig sty (J. Parry *pers. comm.*) and is clearly a late addition to the building (Plate 15).

The main barn is divided into three sections (Figure 5, Q, R and S) by walls which appear to have been added to an original structure. An external stone stair (Figure 5, T, Plate 16) leads to an upper storey above Rooms Q and P. There was further access to this upper storey by means of wooden stairs in the corner of Room S leading to a

doorway (Figure 6, U). Internally the structure of the walls may suggest that this upper storey could be a later development of the barn. The floors of the upper storey appear to have been seal along the walls, presumably to prevent the loss of grain or other stored materials through the floor (Plate 17).

This view is strengthened by the relative position of the joists holding the upper floor in Room R and the main arched doorway in the centre of the eastern side of the barn (Figure 5, V). The joists only just clear the top of the archway giving little or no head room.

The main doorway is distinctive and has had some care in its construction. The top is a low arch, capped by voussoirs in a purple sandstone unlike the stones used for the rest of the barn construction (Plate 18). Late in the use of the barn this main doorway was partly blocked with a rough wall of stone and brick.

The narrow ventilation slots in Room S are presumably the original openings with the larger openings in the gable end and in Room Q being later additions. There is also evidence for a blocked doorway in the western wall of Room S.

Smithy

Now largely destroyed this building was adjacent to the colliery chimney and is likely to have been built as part of the colliery complex. This view is strengthened by the relatively large size of the building which would appear to be too large for an agricultural forge. The building was 7.48 x 5.88 m in size and had a brick extension 2.65 x 2.94 m on its south western side (Figure 7, X).

A blocking on the north west side of the smithy (Figure 7, Y) appears to fill an original opening, however, it extends beyond the line of the wall and may be the stub end of a structure associated with the colliery chimney.

Chimney

The colliery chimney is roughly square in plan and stands to a height of 12.18 m. There is a doorway in the south eastern face (Figure 7, Z, Plate 19) and a vent in the south western face (Figure 7, AA,

Plate 20). The door had a wrought iron frame and covered a brick lined chamber.

The remains of walls along the north western side of the chimney would suggest that it was originally part of a building complex, presumably housing the steam pump. Five recesses in the north western wall (Plate 21) are probably supports for parts of the steam engine and its associated machinery

Conclusions

The site of the Old Colliery at Pentre Berw is unusual combining both agricultural and industrial remains on the same site. The relationship between the colliery and the farm is not known, however the smithy continued in use after the colliery had been abandoned (J. Parry *pers. comm.*) and it is possible that the smithy served both farm and colliery.

It is noticeable that the farm buildings faced away from the industrial building and that many of the opening on the western side of the house and barn had been block. It is tempting to see this blocking as a response to the industrial activity, although this remains to be proved.

Analysis of the structure of both the barn and the house ranges suggest that the site developed over time. It is likely that the agricultural complex predated the industrial complex and it certainly outlived the colliery. Several phases of potential develop within the house and barn have been suggested and these are outlined in Figure 13 and 14.

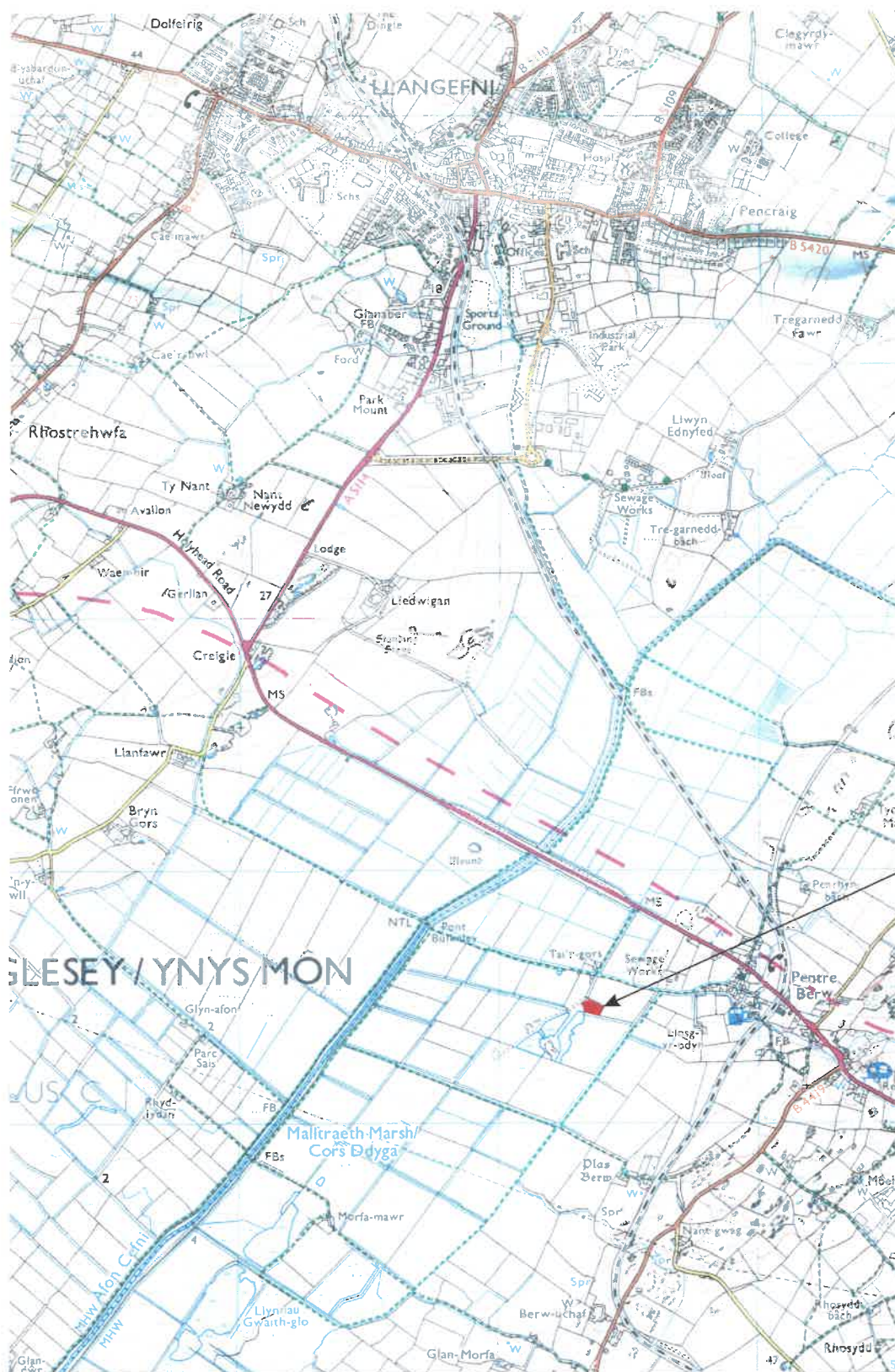
The full extent of the colliery buildings is unknown at present. It is likely that the steam pump was house to the north west of the chimney, although the vent into the chimney is on the south west side. It is also possible that the blocking in the north west wall of the smithy is the stub end of a wall forming part of the colliery complex.. Further the AD 1891, 1:10560 Ordnance Survey map would appear to show further building ranges parallel to and north west of the house. It is therefore recommended that any ground works associated with the conservation or restoration of the remains at Pentre Berw be monitored by a suitably qualified archaeologist.

Acknowledgements

The work was commission by Dewis on behalf of the RSPB. Access to the site was arranged through D. Rees and thanks are due to him and his staff for the support to this project. Particular thanks are due to J. Parry who's grandfather was the last tenant of the farm.

Copyright:

EAS Ltd shall retain full copyright of any commissioned reports, tender documents or other project documentation, under the Copyrights, Designs and Patents Act 1988 with all rights reserved: excepting that it hereby provides an exclusive licence to the client for the use of such documents by the client in all matters directly relating to the project as described in the Project Specification



The Old Colliery

**Figure 1: The Old Colliery,
Pentre Berw. Location
Scale 1:25,000**

Reproduced from Explorer™ 263 1:25,000 scale
by the permission of Ordnance Survey © on behalf of
The Controller of Her Majesty's Stationary Office.
© Crown Copyright 1999..
All rights reserved. Licence number AL 100014722

Key to Drawings












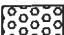
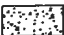

	Stone wall
	Brick wall
	Position of joist
	Wooden feature
	Stone feature
	Blocking
	Fence
	Section through wall
	Red sandstone
	Slate
	Slate roofing
	Rubble fill
	Render
	Metal fittings

Figure 2: The Old Colliery, Pentre Berw
General Plan
Centered on SH 4636 7248



Figure 3: The Old Colliery, Pentre Berw.
Plan of the House Range

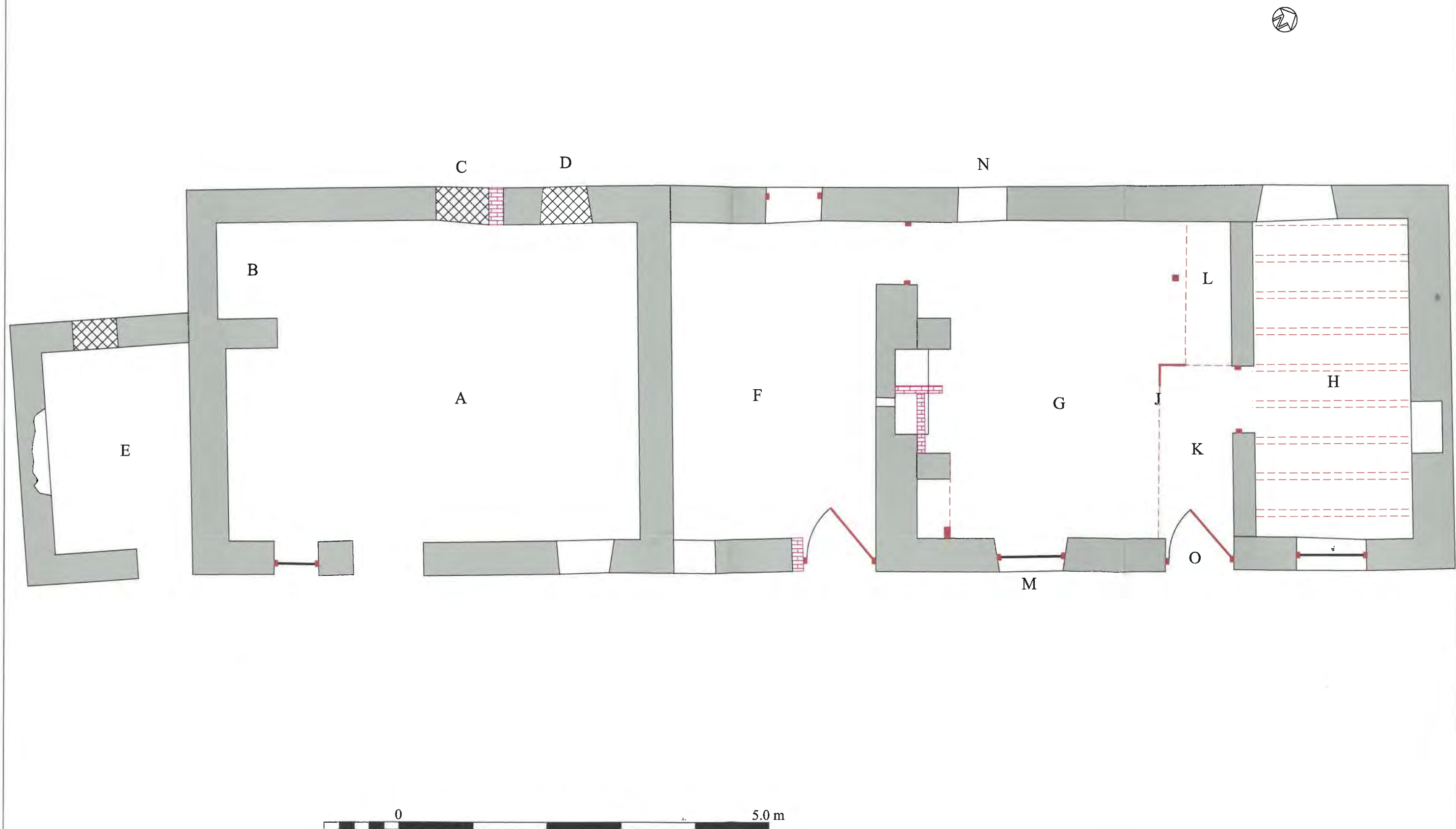


Figure 4: The Old Colliery, Pentre Berw.
Plan of the House Range at
First Floor Level

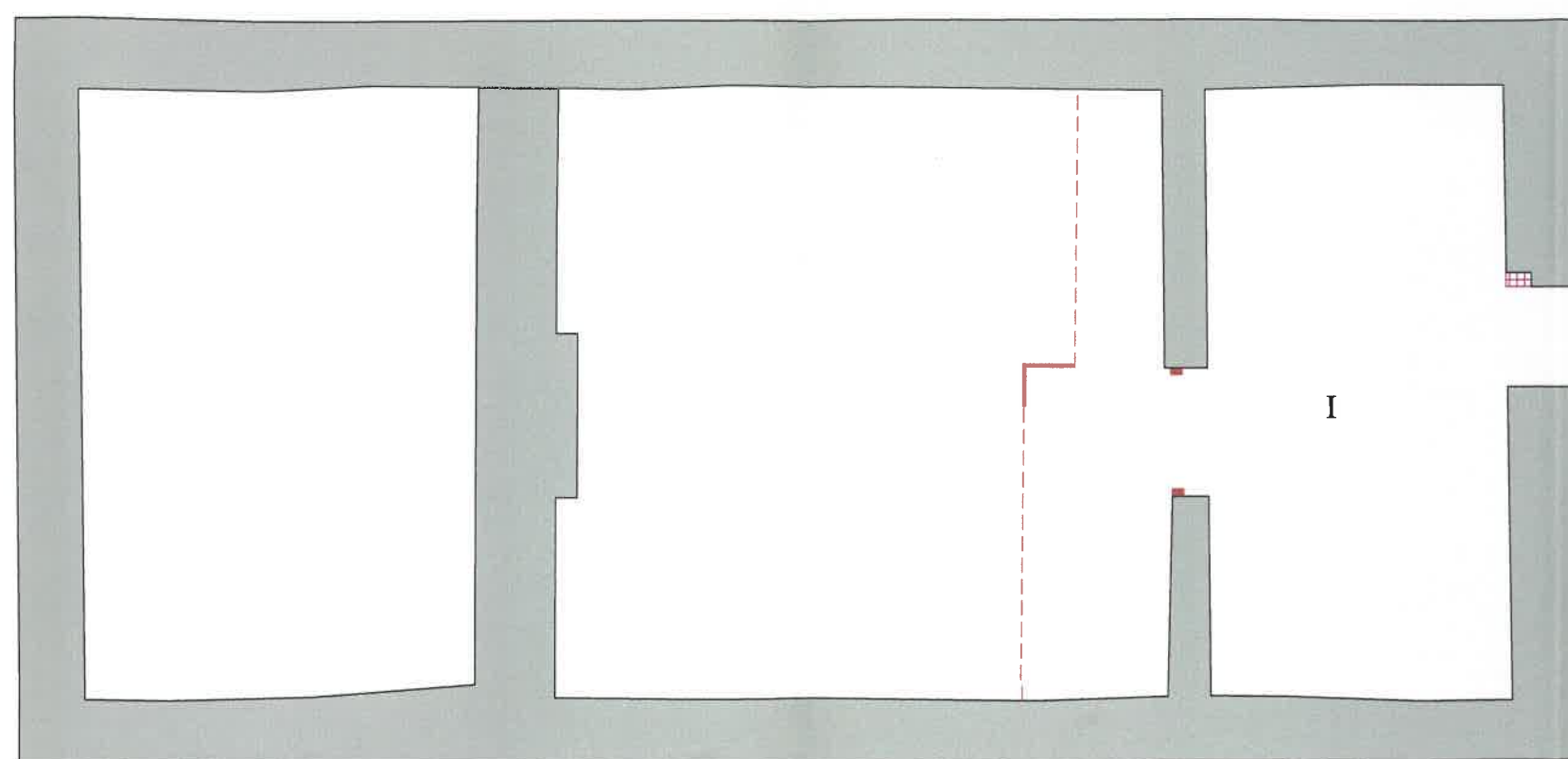


Figure 5: The Old Colliery, Pentre Berw.
Plan of the Barn Range

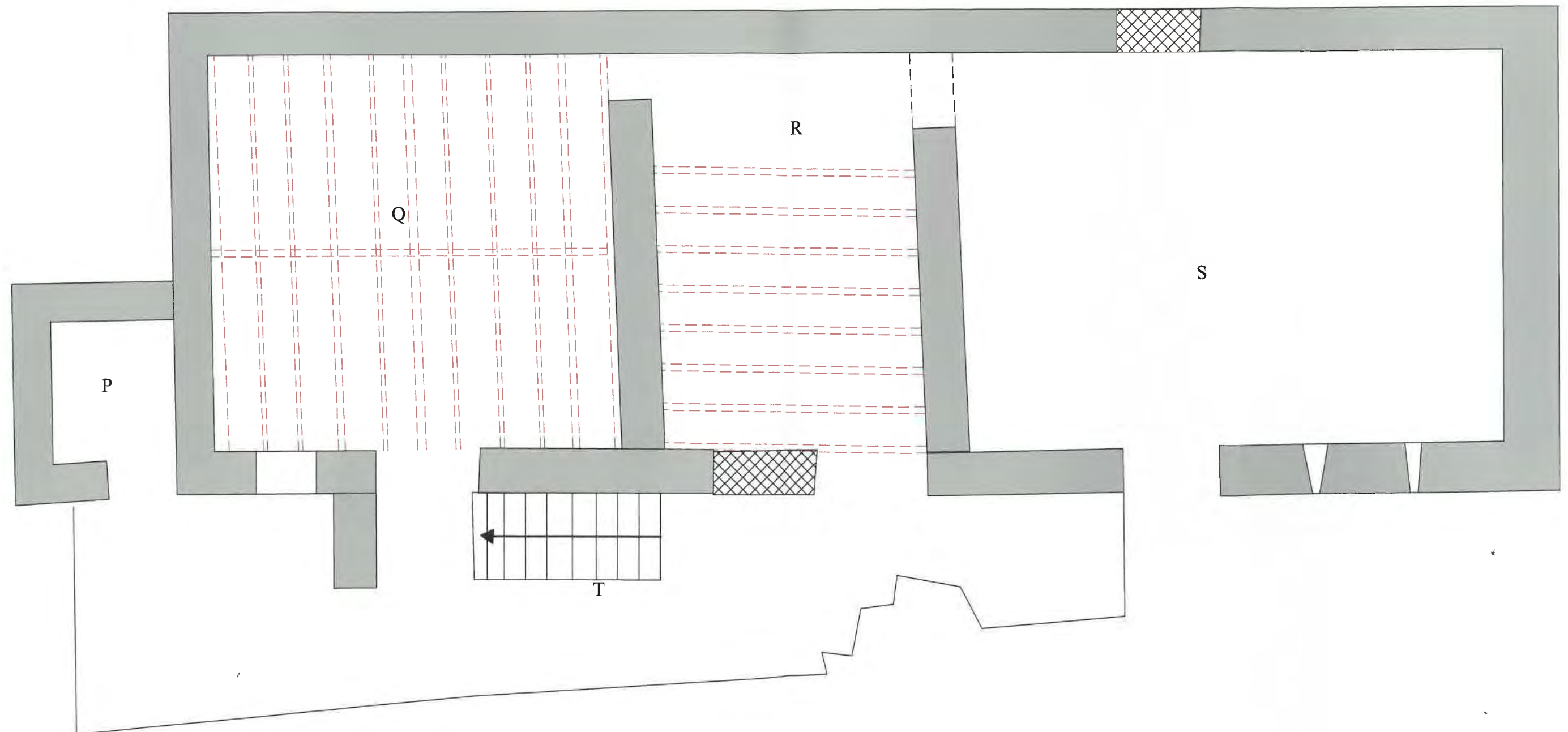


Figure 6: The Old Colliery, Pentre Berw.
Plan of the Barn Range at
First Floor Level

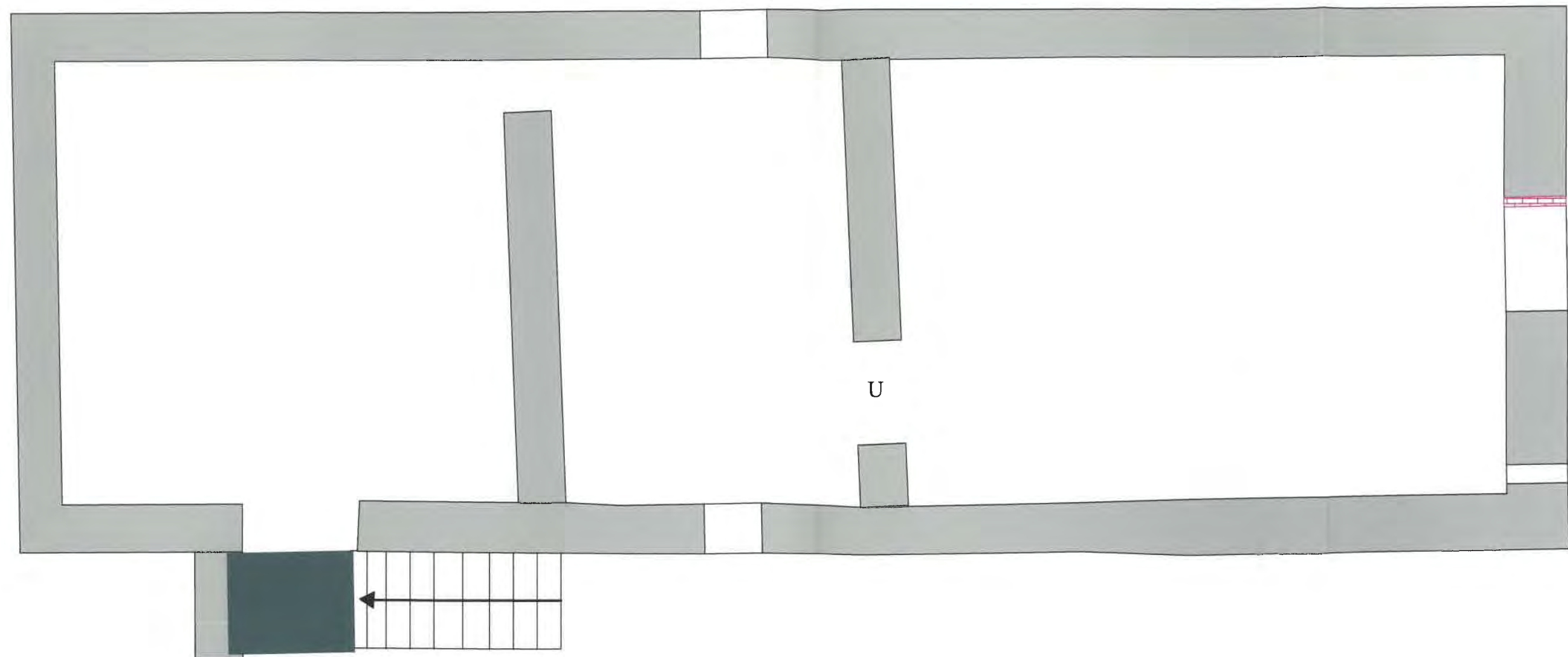


Figure 7: The Old Colliery, Pentre Berw.
Plan of the Chimney and Smithy

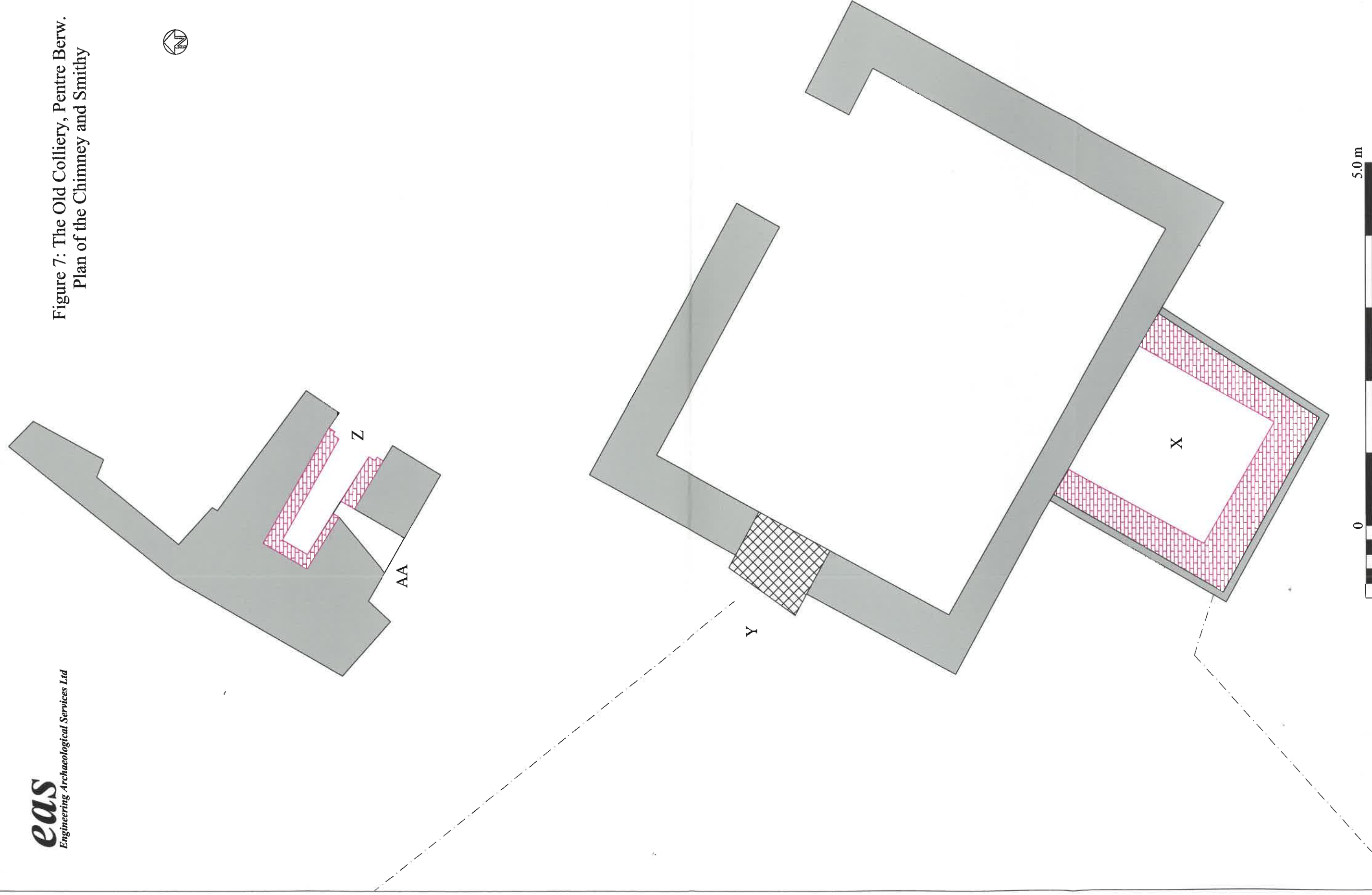


Figure 8: The Old Collery, Pentre Berw.
Front and Back Elevations of the House

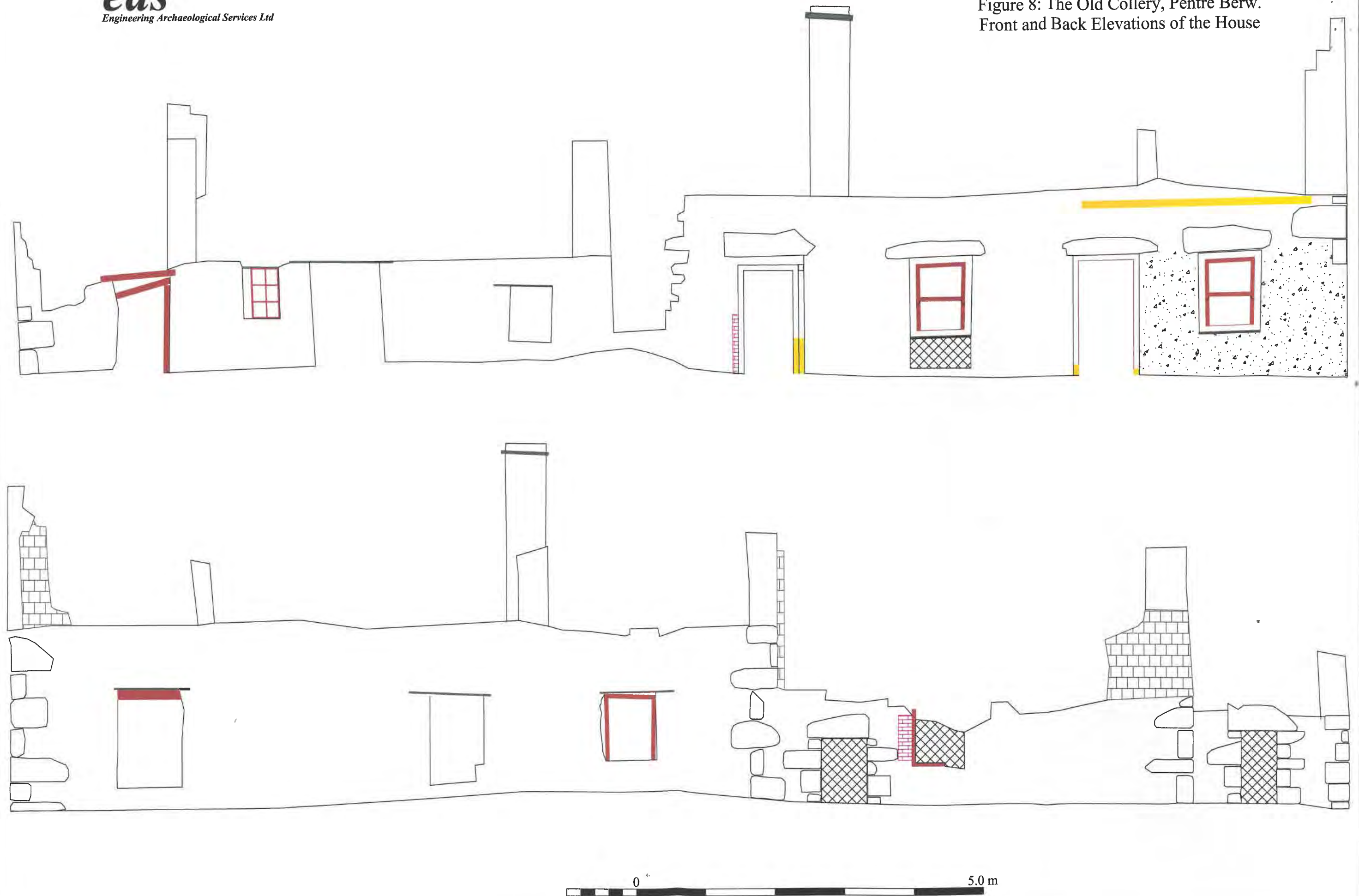


Figure 9: The Old Collery, Pentre Berw.
End Elevations of the House

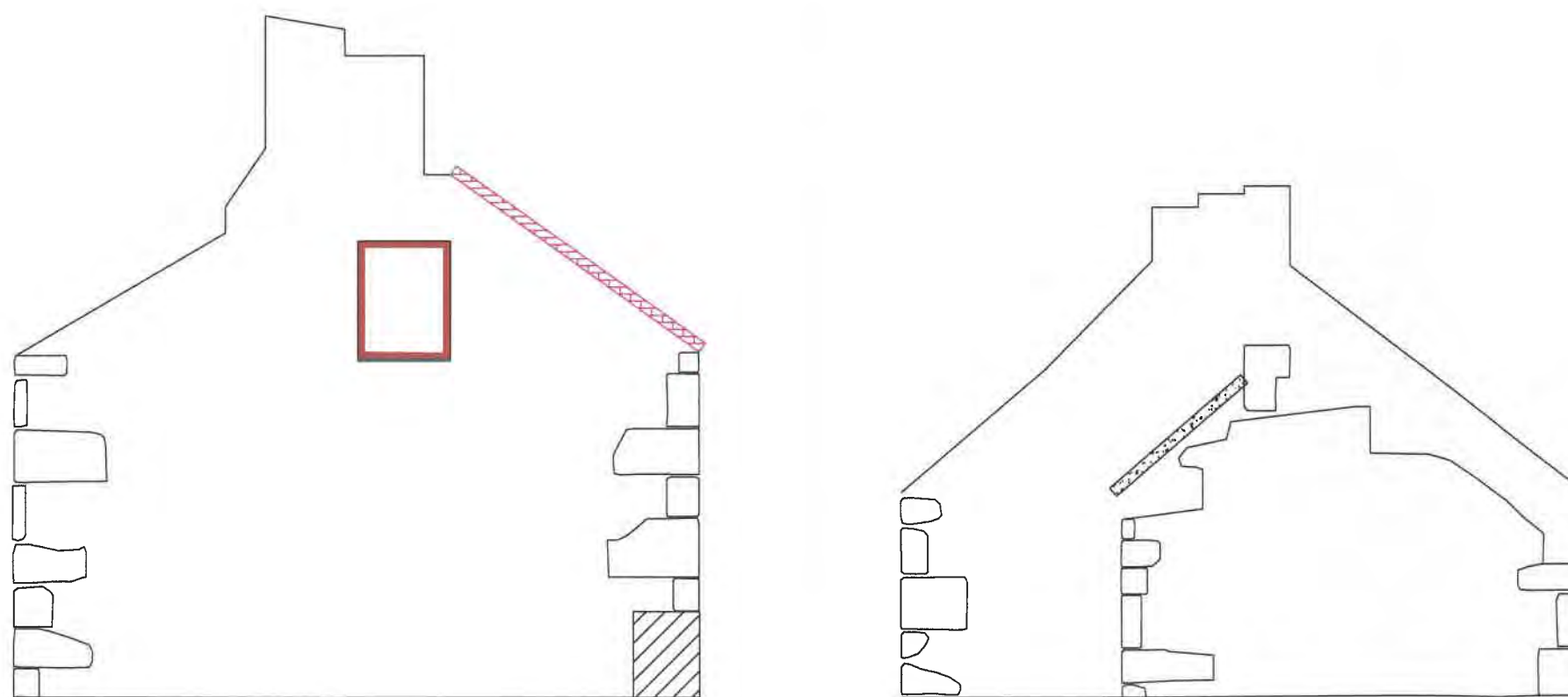


Figure 10: The Old Collery, Pentre Berw.
Front and Back Elevations of the Barn

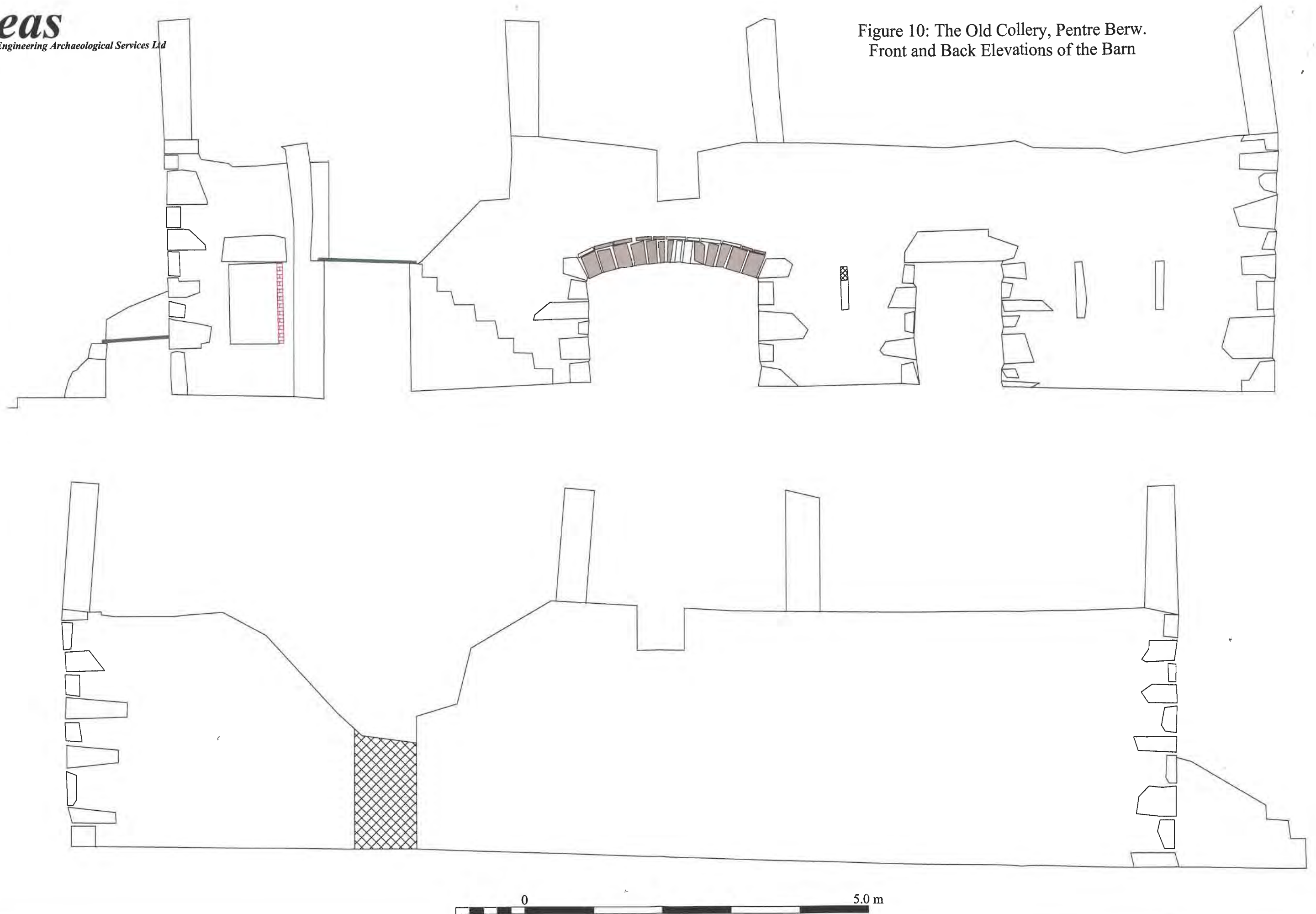
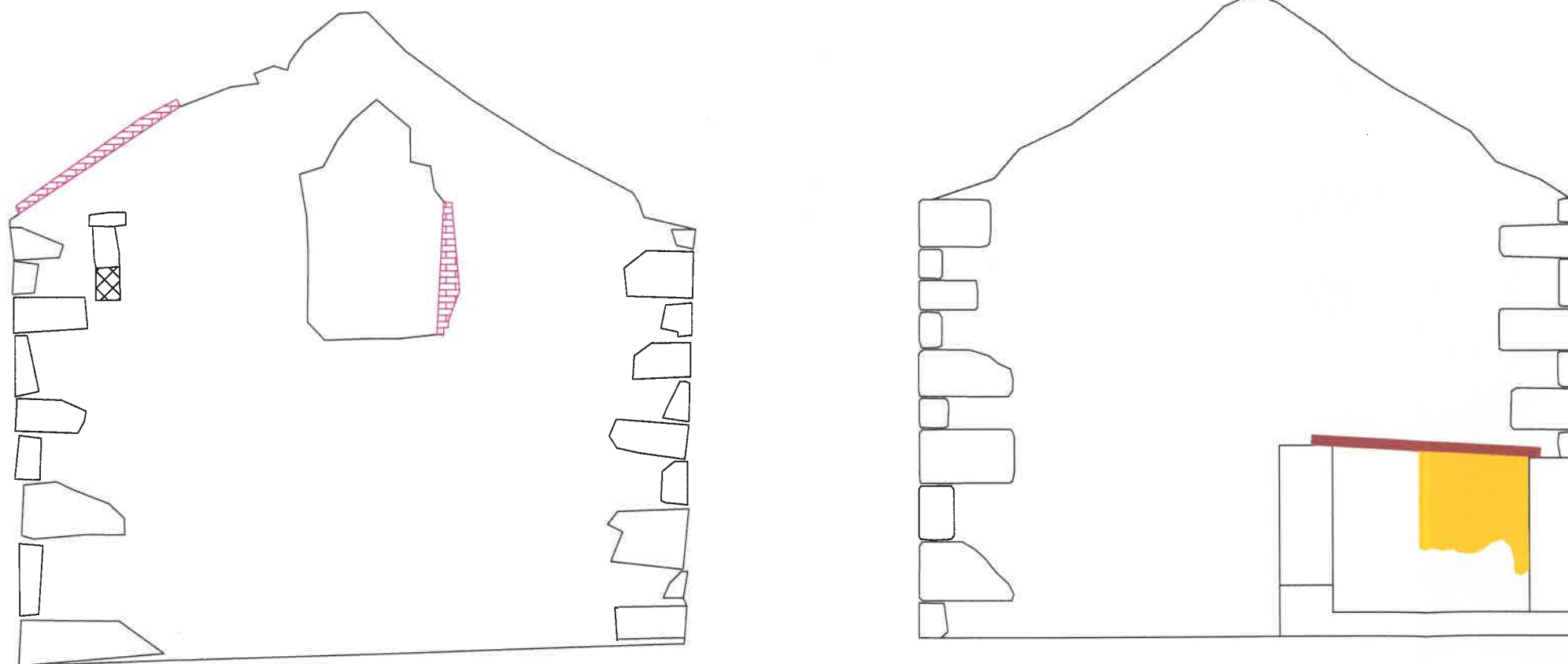


Figure 11: The Old Collery, Pentre Berw.
End Elevations of the Barn



eas

Engineering Archaeological Services Ltd

Figure 13: The Old Colliery, Pentre Berw.
Possible Development of the House

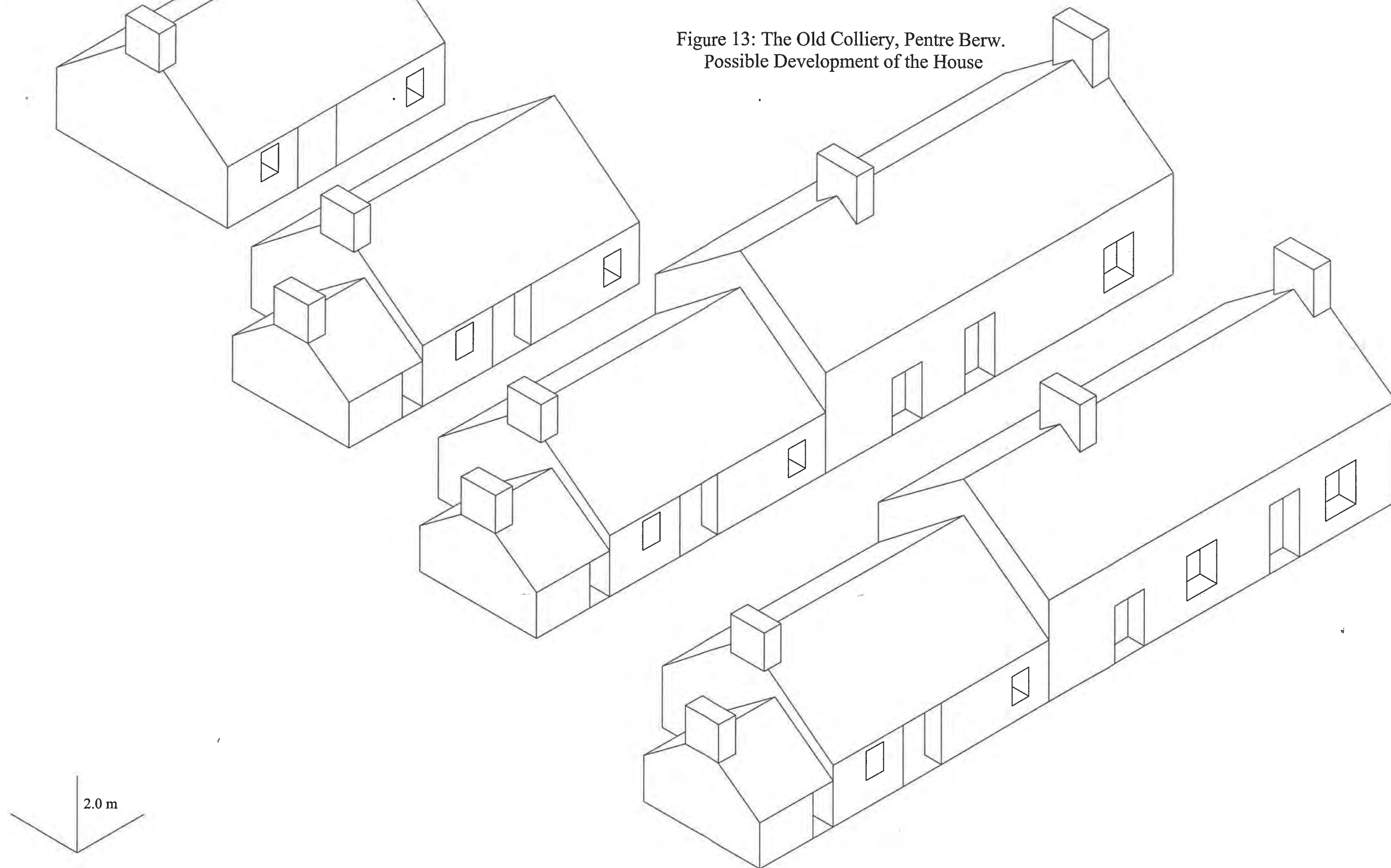


Figure 14: The Old Collery, Pentre Berw.
Possible Development of the Barn

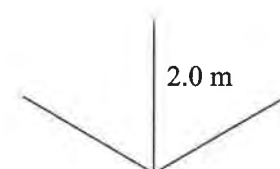
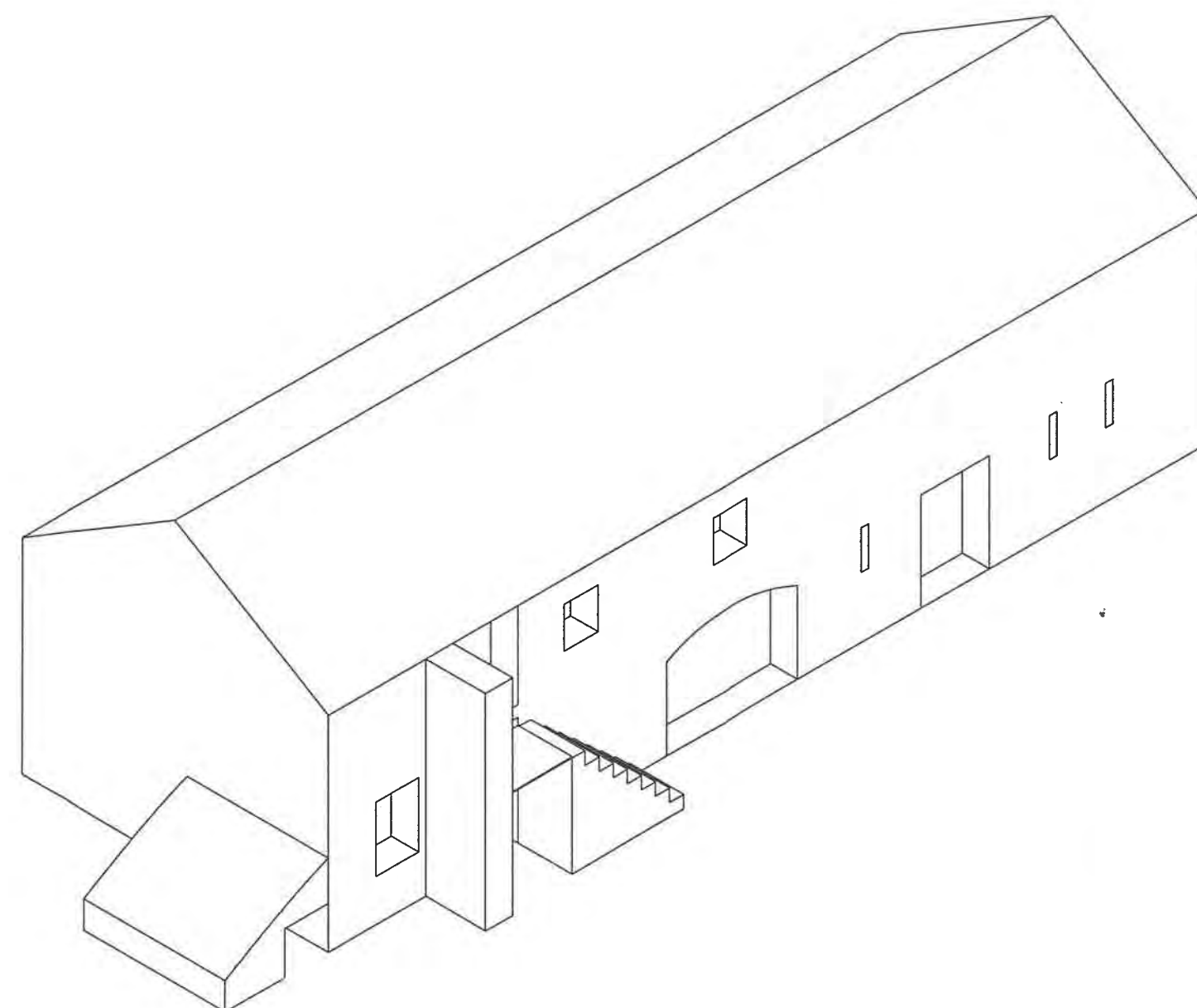
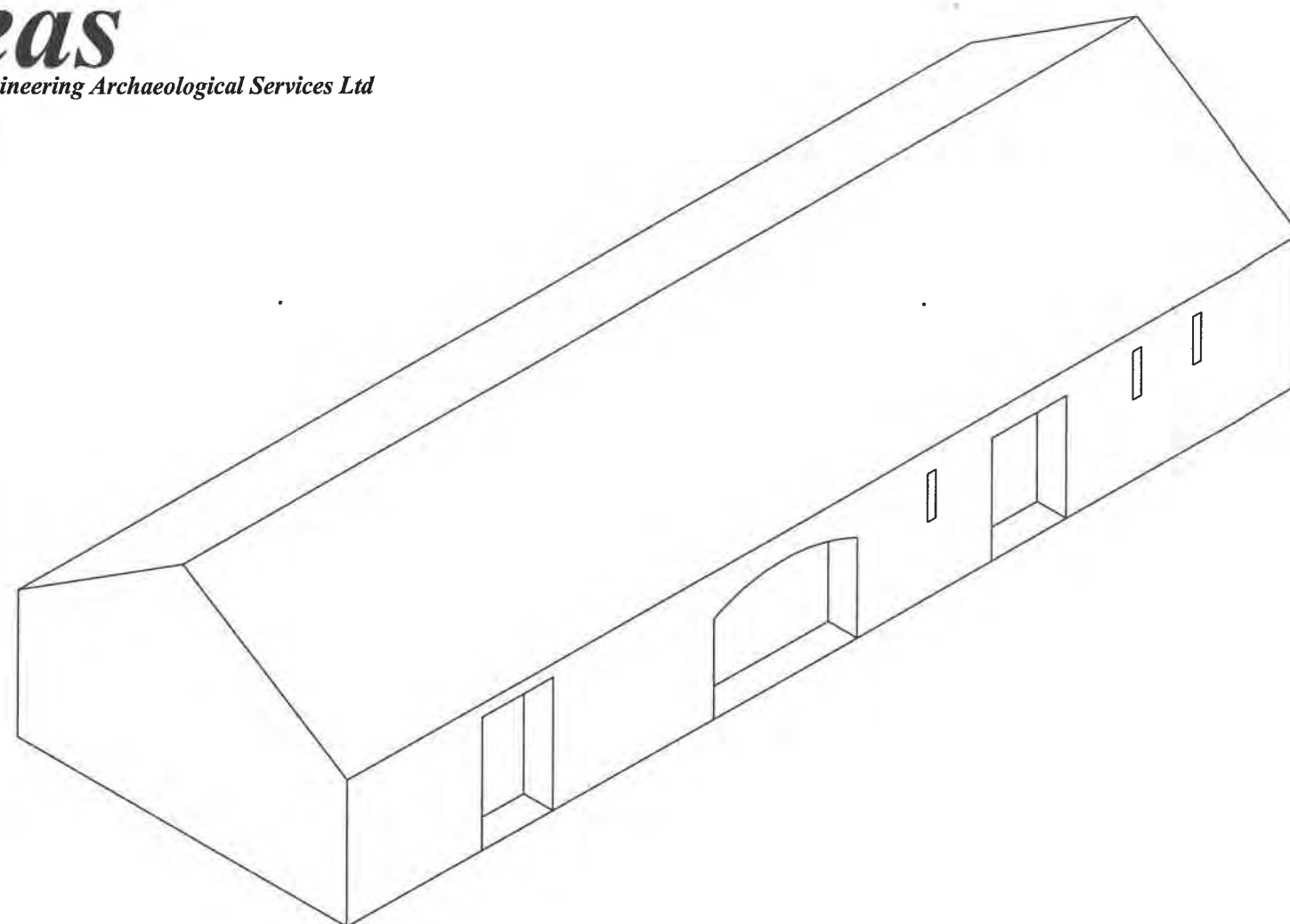




Plate 1: General view of the house range



Plate 2: General view of the barn range.



Plate 3: General view of the smithy



Plate 4: General view of the chimney



Plate 5: Oven in the corner of the earliest house



Plate 6: Stone ridge piece



Plate 7: Slate lining in corner of original house



Plate 8: Gable wall of the original house showing extension



Plate 9: Oven/range in the main house



Plate10: Oven door surround in main house



Plate 11: Vent in the back of the fireplace



Plate 12: Cast iron fire surround in lower bedroom



Plate 13: Corrugated iron lining to lower bedroom



Plate 14: Detail of external limewash



Plate 15: Pig sty



Plate 16: External stairway to barn



Plate 17: Sealing along upper floor in the barn



Plate 18: Main arched doorway to barn



Plate 19: Doorway to the chimney



Plate 20: Vent in chimney



Plate 21: North west face of the chimney

Appendix 1: Summary of Digital Photographs

File	Description	Direction
DSCN 0001	General view of back of barn and house ranges	NE
DSCN 0002	South west end of barn	NE
DSCN 0003	Pig sty	NE
DSCN 0164	Chimney	SW
DSCN 0165	Chimney	NW
DSCN 0166	Smithy	NW
DSCN 0167	Chimney	N
DSCN 0168	Detail of doorway to chimney	NW
DSCN 0169	Detail of vent in chimney	NE
DSCN 0170	General view of back of house	NE
DSCN 0171	General view of back of house	NE
DSCN 0172	Front of house	N
DSCN 0173	Front of house	N
DSCN 0174	Front of barn	SW
DSCN 0175	South end of barn front	NW
DSCN 0176	Arched doorway to barn	NW
DSCN 0177	Vent in barn front wall	NW
DSCN 0178	Vents in barn front wall	NW
DSCN 0179	Northern barn doorway	NW
DSCN 0180	Northern barn doorway	NW
DSCN 0181	Internal view of barn showing upper doorway between Rooms S and R	SSW
DSCN 0182	Internal view of barn in room R	E
DSCN 0183	Internal view of barn in room Q	NNE

File	Description	Direction
DSCN 0184	Internal view of barn in room Q	NNE
DSCN 0185	South end of house	NNW
DSCN 0186	Oven B in Room A	SSW
DSCN 0187	Oven B in Room A	SSW
DSCN 0188	North end of house front	NW
DSCN 0189	Oven/range in Room G	SW
DSCN 0190	Oven/range in Room G	SW
DSCN 0191	Iron frame to oven door in Room G	
DSCN 0192	Collapsed stair in Room G	NE
DSCN 0193	Iron fire surround in Room H	NE
DSCN 0194	Corrugated iron lining to Room H	E
DSCN 0195	Detail of door knocker on main door	N
DSCN 0196	North end of house	SW
DSCN 0197	Chimney at north end of house	SW
DSCN 0198	Middle chimney of house	SW
DSCN 0199	Southern chimney of house	SW
DSCN 0200	North end of barn	SW
DSCN 0201	Iron ring attached to inside of barn Room S	SE
DSCN 0202	North gable end of barn	N
DSCN 0203	North chimney of house	NW
DSCN 0204	Window in Room H of the house	NW
DSCN 0205	Window in Room G of house	NW
DSCN 0206	External door to Room F of house	NW
DSCN 0207	Window in Room A of house	NW
DSCN 0208	External door to Room E of house	NW

File	Description	Direction
DSCN 0209	Detail of lime wash at northern end of house showing pink colouring	NW
DSCN 0210	South end of house	N
DSCN 0211	South end of house	N
DSCN 0212	General view of front of house	N
DSCN 0213	General view of barn front	SW
DSCN 0214	South end of house front	SW
DSCN 0215	Door knocker on main door	N
DSCN 0216	Door knocker on main door	N
DSCN 0217	South end of house front	NNW
DSCN 0218	Middle section of house front	NW
DSCN 0219	Middle section of house front	NW
DSCN 0220	North end of house front	WNW
DSCN 0221	North end of house	W
DSCN 0222	North end of house	ESE
DSCN 0223	South end of barn showing pig sty	NE
DSCN 0224	South end of barn showing pig sty	NE
DSCN 0225	Pig sty	NW
DSCN 0226	South end of barn front	NW
DSCN 0227	South end of barn front	NW
DSCN 0228	Arched doorway to barn	NW
DSCN 0229	Arched doorway to barn and external stairway	NW
DSCN 0230	External stairway to barn	NW
DSCN 0231	External stairway to barn	NW
DSCN 0232	North end of barn front	NNW

File	Description	Direction
DSCN 0233	North end of barn front	W
DSCN 0234	North end of barn front	SW
DSCN 0235	South east face of chimney	NW
DSCN 0236	Detail of door head to chimney	NW
DSCN 0237	Detail of door hinges to chimney	NW
DSCN 0238	South west face of chimney	NNW
DSCN 0239	South west face of chimney	NNW
DSCN 0240	Back of barn	SE
DSCN 0241	Back of house	SE
DSCN 0242	Back of house	NE
DSCN 0243	South end of back of house	E
DSCN 0244	Back of house	NE
DSCN 0245	Oven in Room A of house	SW
DSCN 0246	Oven in Room A of house	SW
DSCN 0247	Slate lining to Room A	N
DSCN 0248	Stone ridge piece from Room A	
DSCN 0249	Stone ridge piece from Room A	
DSCN 0250	North corner of Room A	N
DSCN 0251	North corner of Room A	N
DSCN 0252	South west corner of Room F showing sealed roof line	SW
DSCN 0253	Middle chimney of house	SW
DSCN 0254	Internal view of external door to Room F	ENE
DSCN 0255	Vent between Room F and Oven/range in Room G	NE
DSCN 0256	Burning marking probable position of a freestanding stove in Room F	S

File	Description	Direction
DSCN 0257	Detail of bolt on door to Room F	SE
DSCN 0258	Burning marking probable position of a freestanding stove in Room F	SSW
DSCN 0259	Detail of hinge to door to Room F	SE
DSCN 0260	Fallen section of roofing from Room F	
DSCN 0261	Oven/range in Room G	SW
DSCN 0262	Oven/range in Room G	SW
DSCN 0263	Oven/range in Room G	S
DSCN 0264	Support for partition in Room G	E
DSCN 0265	Toggle to secure under stair cupboard door	NW
DSCN 0266	Fire surround in Room H	NE
DSCN 0267	Wooden partition in Room G	N
DSCN 0268	Wooden partition in Room G	N
DSCN 0269	Collapsed room in Room G	NW
DSCN 0270	Collapsed room in Room G	NW
DSCN 0271	Door surround to oven in Room G	
DSCN 0272	Detail of oven/range in Room G	SW
DSCN 0273	Collapsed stair in Room G	NW
DSCN 0274	Cut nail as part of partition in Room G	W
DSCN 0275	Detail of hinge for main door	N
DSCN 0276	Gutter on front of house	NW
DSCN 0277	Internal view of blocked doorway in Room S of barn	NW
DSCN 0278	Horse shoe embedded in wall of Room S of barn	SW
DSCN 0279	Internal view of ventilation slots in Room S of barn	ESE
DSCN 0280	Iron fitting in Room S of barn	NW

File	Description	Direction
DSCN 0281	Internal view of arched doorway to barn	SE
DSCN 0282	Detail of sealing around upper floor in Room R of barn	N
DSCN 0283	Detail of sealing around upper floor in Room R of barn	S
DSCN 0284	Upper doorway between Rooms R and S in the barn	NE
DSCN 0285	Iron ring in Room Q of barn	SE
DSCN 0286	Iron ring in Room Q of barn	SE
DSCN 0287	Internal view of Room Q of barn	NW
DSCN 0288	Internal view of Room Q of barn	SW
DSCN 0289	Internal view of Room Q of barn	S
DSCN 0290	Internal view of Room Q of barn	E
DSCN 0291	Internal view of Room Q of barn	NE
DSCN 0292	Iron fitting in upper doorway to Room Q of barn	S
DSCN 0293	Iron fitting in upper doorway to Room Q of barn	S
DSCN 0294	Iron hinge, probably from barn found in bonfire	
PB060001	South east face of chimney	NW
PB060002	South east face of chimney	NW
PB060003	Doorway in south east face of chimney	NW
PB060004	North east face of chimney	SW
PB060005	North west face of chimney	SE
PB060006	North west face of chimney	SE
PB060007	South west face of chimney	NE
PB060008	Chimney	N
PB060009	Chimney and smithy	N

File	Description	Direction
PB060010	Vent in south west face of chimney	NE
PB060011	Smithy	N
PB060012	South end of barn and pig sty	NE
PB060013	Pig sty	N
PB060014	Barn front	NW
PB060015	South end of barn front	NW
PB060016	North end of barn front	N
PB060017	South end of barn front	NW
PB060018	North end of barn front	NNW
PB060019	South end of house	N
PB060020	South end of house	N
PB060021	North end of barn	SW
PB060022	North end of barn	SW
PB060023	South end of house front	SSW
PB060024	South end of house front	NW
PB060025	Middle of house front	NNW
PB060026	Middle of house front	NW
PB060027	Middle of house front	NW
PB060028	North end of house front	SW
PB060029	North end of house front	SW
PB060030	North end of house	W
PB060031	North end of house	ESE
PB060032	South end of barn and pig sty	NE
PB060033	Pig sty	N
PB060034	South end of barn front	NW

File	Description	Direction
PB060035	Arched doorway and external stair to barn	NW
PB060036	Arched doorway and external stair to barn	SW
PB060037	North end of barn front	N
PB060038	South east face of chimney	NW
PB060039	Doorway in south east face of chimney	NW
PB060040	Doorway in south east face of chimney	NW
PB060041	Doorway in south east face of chimney	NW
PB060042	Doorway in south east face of chimney	NW
PB060043	Chimney	N
PB060044	Back of barn and house	NNE
PB060045	Chimney	N
PB060046	Back of barn	ESE
PB060047	Back of barn	E
PB060048	Back of barn and house	NNE
PB060049	Back of barn and house	NNE
PB060050	Back of house	SE
PB060051	Back of house	SE
PB060052	Back of house	E
PB060053	Oven in Room A of house	SW
PB060054	Oven in Room A of house	SW
PB060055	Internal view of Room A	NE
PB060056	Internal view of Room A	NW
PB060057	Internal view of Room A	NW
PB060058	Internal view of Room A	NW
PB060059	Internal view of Room A	NW

File	Description	Direction
PB060060	Slate lining in north corner of Room A	N
PB060061	Slate lining in north corner of Room A	NW
PB060062	Internal view of Room A	SE
PB060063	Internal view of Room A	SE
PB060064	Internal view of Room F	SW
PB060065	Internal view of Room F	NE
PB060066	Internal view of Room F	NE
PB060067	Internal view of Room F	SW
PB060068	Internal view of Room F	SW
PB060069	Internal view of Room F	SW
PB060070	Internal view of Room F	SE
PB060071	Internal view of Room F	SE
PB060072	Internal view of Room F	NE
PB060073	Internal view of Room F	NE
PB060074	Internal view of Room F	NE
PB060075	Scorch mark on south wall of Room F	SW
PB060076	Scorch mark on south wall of Room F	SW
PB060077	Middle chimney of house	SW
PB060078	Oven/Range in Room G	SW
PB060079	Oven/Range in Room G	SW
PB060080	Iron surround for oven door in Room G	
PB060081	Partition in Room G	NE
PB060082	Collapsed roof in Room G	NW
PB060083	Internal view of Room G	SE
PB060084	Internal view of Room G	NW

File	Description	Direction
PB060085	Doorway to upper bedroom	E
PB060086	Collapsed stair in Room G	NE
PB060087	Collapsed stair in Room G	NE
PB060088	Partition support in Room G	NE
PB060089	Collapsed stair in Room G	NW
PB060090	Doorways to upper and lower bedroom	N
PB060091	Door knocker to main door	N
PB060092	Main door	N
PB060093	Fire surround in Room H	NE
PB060094	Internal view of Room H	SE
PB060095	Fire surround in Room H	NE
PB060096	Corrugated iron lining to Room H	E
PB060097	Slate lining to door into Room H	E
PB060098	Collapsed stair in Room G	NE
PB060099	Internal view of Room H	NW
PB060100	Internal view of blocked doorway in Room S of barn	NW
PB060101	Internal view of Room S of barn	NE
PB060102	Internal view of Room S of barn	SE
PB060103	Internal view of Room S of barn	SSE
PB060104	Internal view of Room S of barn	SW
PB060105	Internal view of Room R of barn	SE
PB060106	Internal view of Room R of barn	SE
PB060107	Internal view of Room R of barn	SW
PB060108	Internal view of Room R of barn	NE

File	Description	Direction
PB060109	Internal view of Room R of barn	NE
PB060110	Internal view of Room R of barn	E
PB060111	Internal view of Room R of barn	NW
PB060112	Internal view of Room Q of barn	NW
PB060113	Internal view of Room Q of barn	NW
PB060114	Internal view of Room Q of barn	SW
PB060115	Internal view of Room Q of barn	SE
PB060116	Internal view of Room Q of barn	SE
PB060117	Internal view of Room Q of barn	NE
PB060118	Internal view of window in Room Q of barn	SE
PB060119	Internal view of doorway to Room Q of barn	SE
range	Composite of the back of the barn and house	NE

Desktop Surveys



Evaluations and Appraisals



Watching Briefs



Geophysical Surveys



Topographical Surveys



Building Surveys



Lithics Analysis



Archaeological Conservation



*Engineering Archaeological Services Ltd
Unit 2, Glanypwll Enterprise Workshops
Ffordd Tanygrisiau, Blaenau Ffestiniog
Gwynedd, LL41 3NW*

tel: 01766 832088

fax: 01766 830061

email: easltd@smsinternet.co.uk

www.engineeringarchaeologicalservices.co.uk

Registered in England No. 2869678