
North West Wales Dendrochronology Project
DATING OLD WELSH HOUSES

Vaynol Old Hall, Faenol, Gwynedd

ARCHITECTURAL RECORD



in partnership with



Adam Voelcker
MA (Cantab) Dip Arch
Pant Glas Uchaf
Pant Glas
Garndolbenmaen
Gwynedd LL51 9DQ

North West Wales Dendrochronology Project

Vaynol Old Hall, Faenol

Introduction

This report contains the results of a survey undertaken to complement the proposed dating of timbers at Vaynol Old Hall, Faenol, as part of the North West Wales Dendrochronology Project. The survey was undertaken on 9 February and 2 March 2010 by Adam Voelcker. Documentary research will be undertaken by volunteers to accompany this survey, and separate reports will be issued describing the results of the documentary survey and of the dendrochronology sampling.

Site particulars

Site address

Vaynol Old Hall, Faenol, Bangor, Gwynedd LL57 4BP

NGR

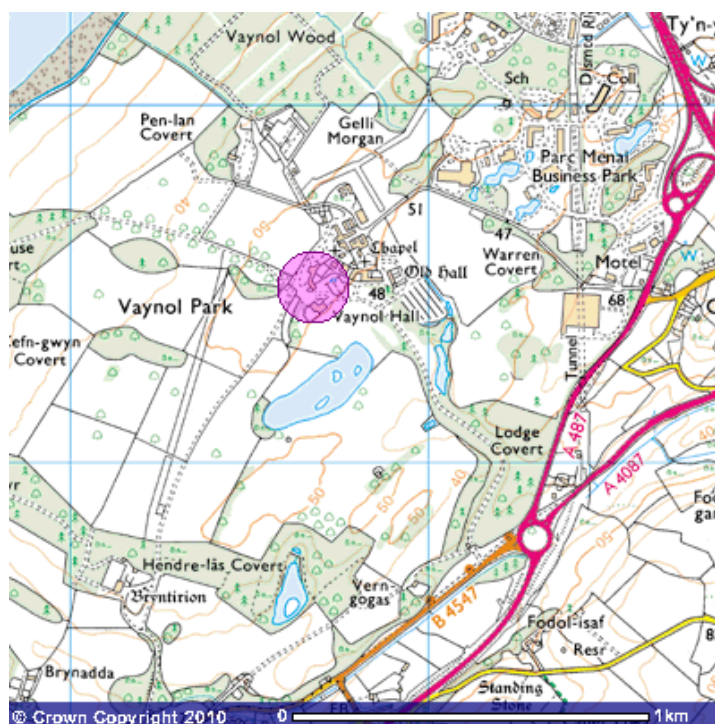
SH 25383 36957

NPRN

17018

Listing status

Grade I



Methodology

The basement and ground floor plans are as drawn by the RCAHMW; the upper floor plan is based on these, with truss positions marked as measured on site. The cross-sections and ground-floor ceiling details are drawn free-hand and are based on site dimensions, with the aid of photographs taken on site.

References

Cadw listing description

Record No. 4166

RCAHMW Caernarvonshire Inventory

Vol.II. Entry no.1387 (pp.243-4) (1956)

Sources of information at the NMRW, Aberystwyth

- photographic survey by Stephen Hughes, 2005 (Catalogue No. 413932)
- measured drawings and schedule of work, 1996 (40994)
- 'A brief history of the Williams family of Vaynol', 1996 (40995)
- black & white print from an original (19766)
- original drawing, included in RCAHMW Inventory as Fig 176 (11939)

Houses of the Welsh Countryside (Peter Smith)

Maps	28	Type A house - lateral chimney
	40	Enriched doorheads
	45	Stepped gables
	49	Date inscription 1600-49
	50	Date inscription 1650-99

The Buildings of Wales: Gwynedd (Haslam, Orbach & Voelcker)

p.371



Plate 1 East elevation



Plate 2 North (front) elevation



Plate 3 Ceiling to main hall (secondary and tertiary beams)



Plate 4 Ceiling to main hall (tertiary beams)



Plate 5 Detail of stop on tertiary beam



Plate 6 Ditto



Plate 7 Truss 1 in foreground (from E)



Plate 8 Partition in bedroom, below Truss 3 (from E)



Plate 9 Trusses 2 and 3, from E



Plate 10 Truss 5 (attic in rear part of house)



Plate 11 Trusses 7 & 8, from W

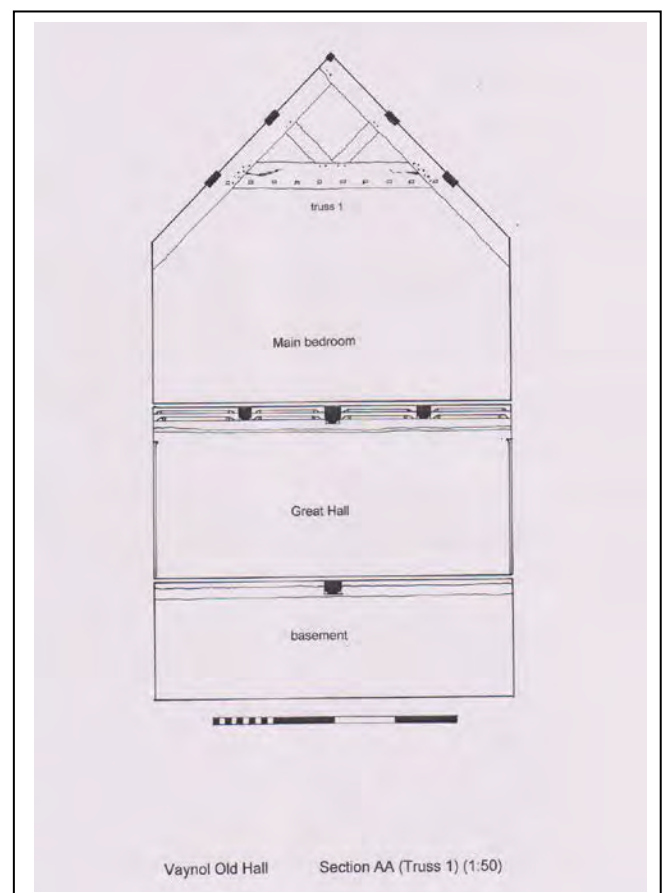
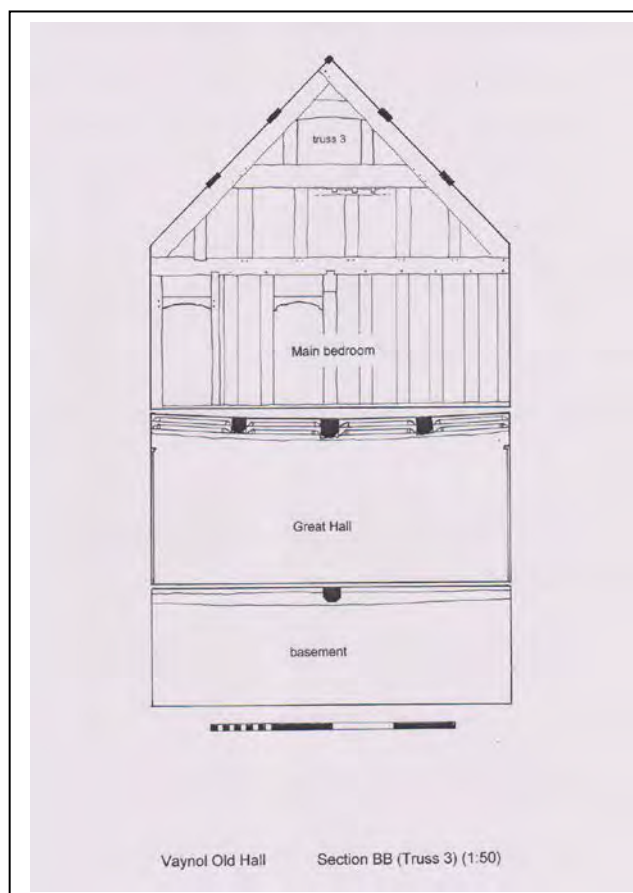
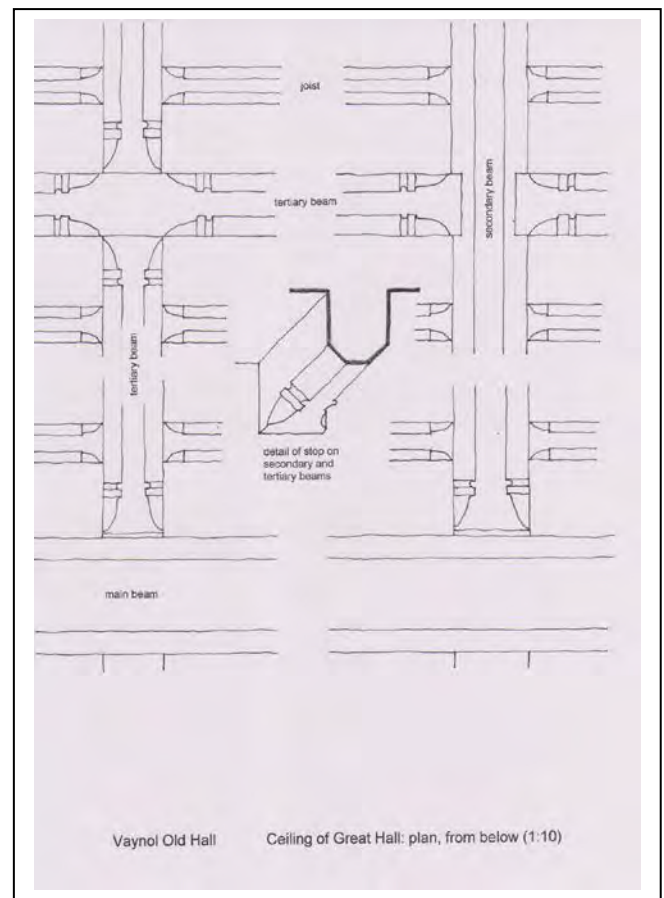
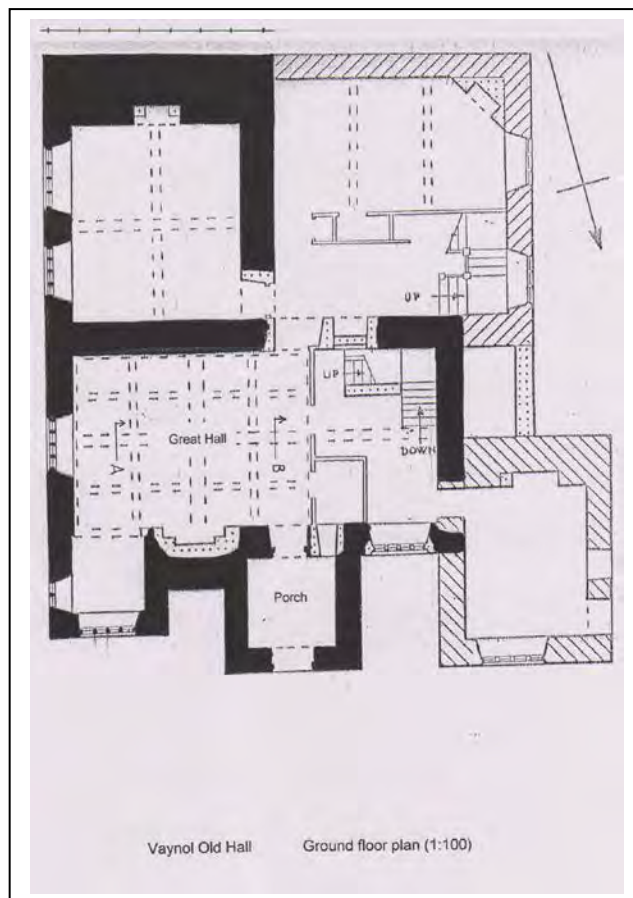


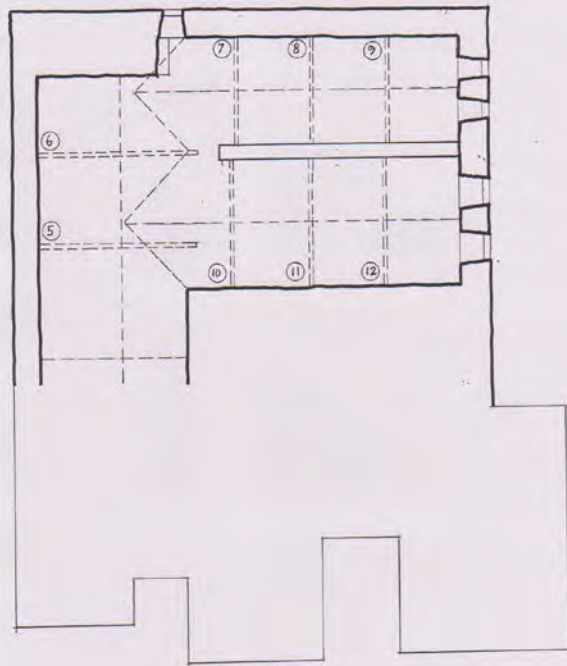
Plate 12 Trusses 10 & 11, from W

LIST OF PHOTOGRAPHS INCLUDED ON CD

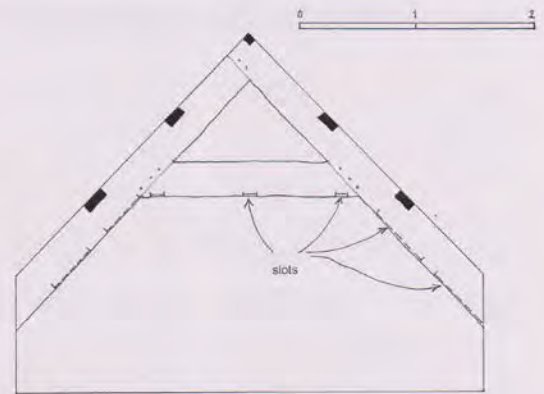
- 001 Truss 1, from E (Plate 7)
- 002 Partition/Truss 3, from E (Plate 8)
- 003 Trusses 2 & 3, from E (Plate 9)
- 004 E window in main bedroom
- 005 Truss 5, attic in rear part of house (Plate 10)
- 006 E elevation (Plate 1)
- 007 N (front) elevation (Plate 2)
- 008 ceiling to main hall
- 009 ditto (Plate 3)
- 010 ditto
- 011 ditto
- 012 exterior, from NE (cover)
- 013 detail of beam stop (Plate 5)
- 014 detail of ceiling beams, main hall (Plate 4)
- 015 detail of beam stop (Plate 6)
- truss 7
- trusses 7-8
- trusses 8-9
- trusses 10-11

PLANS AND ELEVATIONS

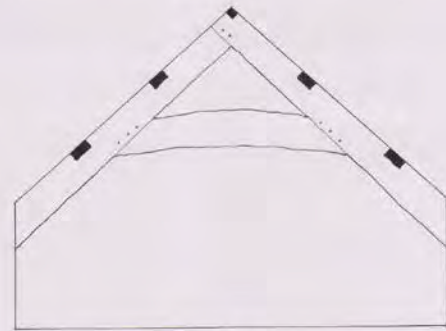




Vaynol Old Hall Attic Plan (1:100)

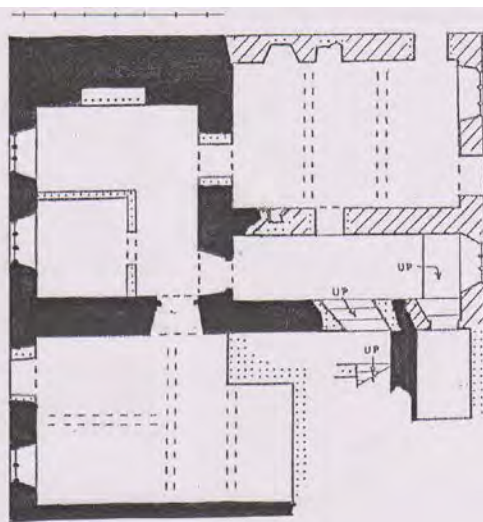


Truss 12, from W

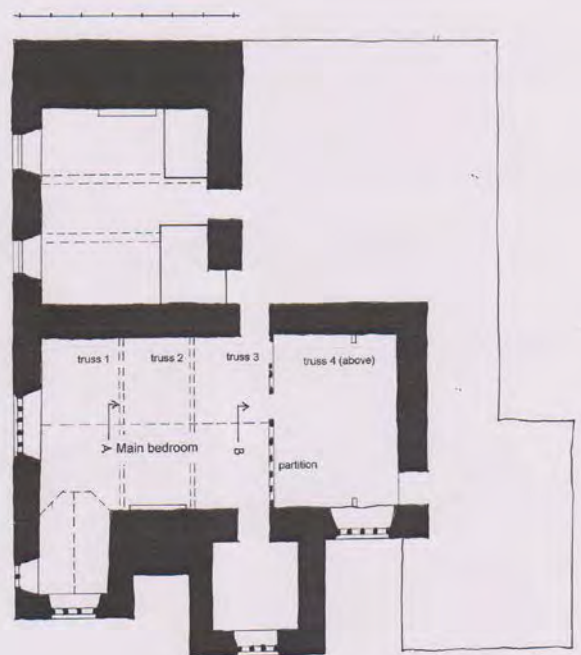


Truss 9, from W

Vaynol Old Hall Truss elevations (1:25)



Vaynol Old Hall Basement plan (1:100)



Vaynol Old Hall Upper floor plan (1:100)