
North West Wales Dendrochronology Project
DATING OLD WELSH HOUSES

Llawr-dref, Llangian, Gwynedd

ARCHITECTURAL RECORD



in partnership with



Adam Voelcker
MA (Cantab) Dip Arch
Pant Glas Uchaf
Pant Glas
Garndolbenmaen
Gwynedd LL51 9DQ



Llawr-dref, Llangian

North West Wales Dendrochronology Project

Llawr-dref, Llangian

Introduction

This report contains the results of a survey undertaken to complement the proposed dating of timbers at Llawr-dref, Llangian, as part of the North West Wales Dendrochronology Project. The survey was undertaken on 11 December 2009 by Adam Voelcker. Documentary research will be undertaken by volunteers to accompany this survey, and separate reports will be issued describing the results of the documentary survey and of the dendrochronology sampling.

Site particulars

Site address

Llawr-dref, Llangian, Pwllheli, Gwynedd LL53 7LT

Present owner

Dr Owen 01758 612782

NGR

SH 28902874

Sources of information (architectural)

RCAHMMW *Caernarvonshire*, vol.3 (1964) p.61 and Plates 47, 52 & 59

RCAHMMW Coflein database, NPRN 26715

Cadw listing description, Record No. 19625 (1998)

Peter Smith, *Houses of the Welsh Countryside* (1981), distribution maps

p.413	windbraces
p.417	truss cusping
p.437	house Type A
p.474	fireplace stair
p.492	post-and-panel partition
p.503	enriched doorhead

ADDITIONAL INFORMATION

This information supplements the RCAHMW and Cadw descriptions. Cadw was unable to inspect the roof-space; RCAHMW could, but not in detail.

The inspection confirms that there are three oak trusses in the roof space, two with ornate cusping at and above collar level (Trusses 2 & 3) and one with a plain cambered collar without cusping (Truss 1). However, there are no wind-braces nor is there any evidence of any, for instance mortises in the purlins or trusses (this is contrary to Peter Smith's distribution map). Nor are there any holes for partition uprights in the collar and principals of the plain truss (Truss 1) - these might have been expected here, though not in the other two trusses.

The original oak purlins survive but have been cut off in line with the C19 truss south of Truss 3. Modern purlins have been inserted above the oak ones, to re-align the roof to a regular line and to carry the modern slated roof. It is not clear why the south gable of the house has been rebuilt (probably in the C19) and a new softwood truss inserted.

The remainder of the Cadw description appears to be accurate, but it omits (as does the RCAHMW description) the possible blocked window to the top of the former staircase, in the north gable. The high position of this window is unusual so it is possible that it is not original but was perhaps formed when the stonework above the former mural stair was removed. Stubs of stone projecting radially from the external north wall, in line with the window, give the superficial appearance that the stair might have once continued up to the roof-space, but this would be unusual and the stone stubs are more likely to be the ends of the stones forming the 'ceiling' above the mural stair. The most likely function of the window was to light the attic space when it was used for accommodation by servants or farm-hands (there are scraps of wall-paper evident on the south gable).

The RCAHMW states that there are no stops to the ground floor beams, but one does survive, on the south side of the main beam at its western end (in passage). The stop on the north side is less clear.

There is a minor error in the RCAHMW ground floor plan - the recess in the south room should be shown in the east, not the west, wall.



Plate 1 East elevation



Plate 2 West elevation



Plate 3 Truss 1 (viewed from south)



Plate 4 Truss 1 (viewed from south)



Plate 5 Trusses 2 & 3 (viewed from north - Truss 2 in foreground)



Plate 6 Trusses 2 & 3 (viewed from north - Truss 2 in foreground)



Plate 7 Truss 3 (viewed from north)



Plate 8 Truss 3 (viewed from north)

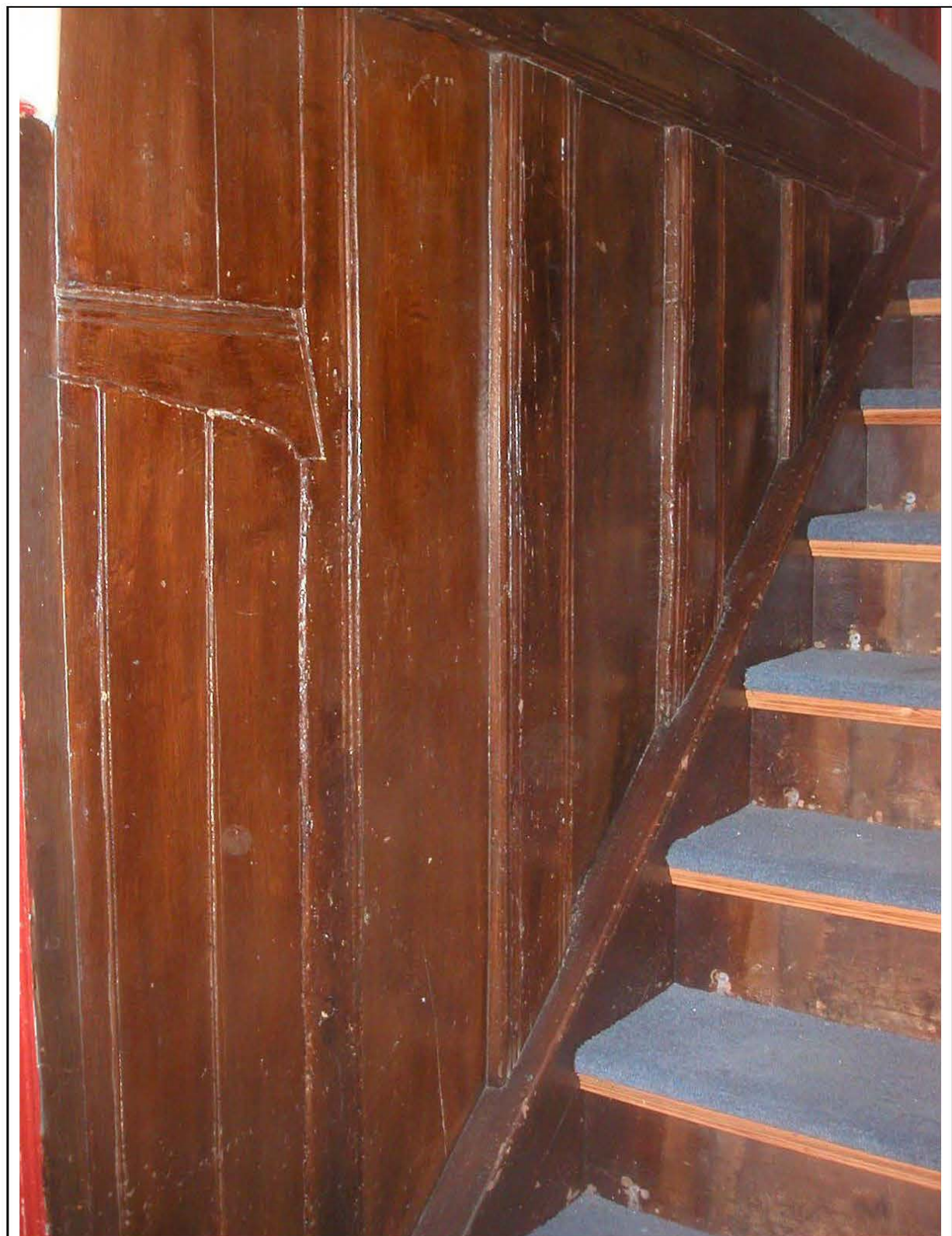


Plate 9 Partition



Plate 10 Partition (part of blocked doorhead)



Plate 11 Partition (detail of post and head mouldings)



Plate 12 Possible blocked window in north gable



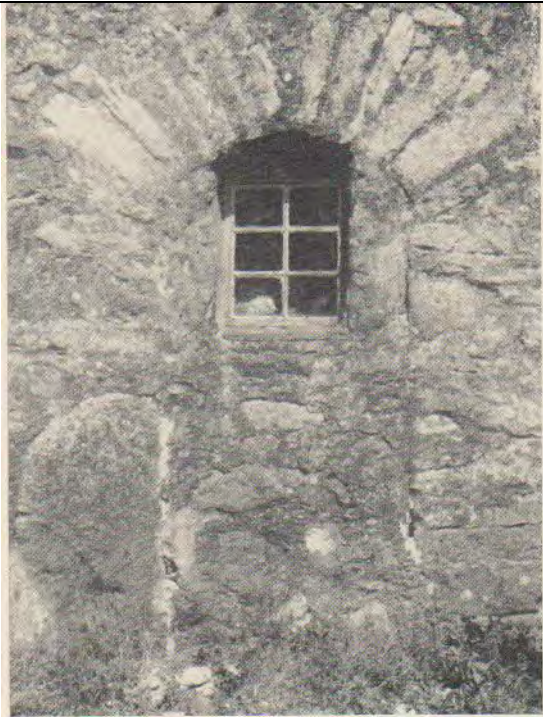
Plate 13 Stop to main beam (west end, south side)



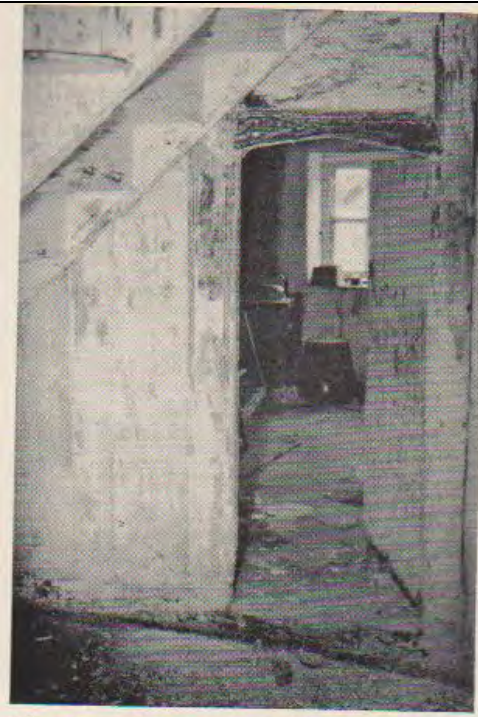
Plate 14 Fireplace (bressummer)



Plate 15 Stop at east end of bressummer



west (rear) doorway RCAHMW 1958



Llangian (1614, p. 61b), Llawr-dref,
screen doorway. 16th-century.



east (front) elevation

RCAHMW 1958