



eas

Engineering Archaeological Services Ltd.

**Plas Gwyn, Y Ffor
Archaeological Watching Brief**

I.P. Brooks

EAS Client report 2017/04

Plas Gwyn, Y Ffor
Archaeological Watching Brief
Commissioned by J. Ellis

Fieldwork by:
I.P. Brooks
Engineering Archaeological Services Ltd

Engineering Archaeological Services Ltd is
Registered in England No 286978

Plas Gwyn, Y Ffor, Archaeological Watching Brief

I.P. Brooks

Engineering Archaeological Services Ltd

EAS Client Report 2017/04

March 2017

CONTENTS

Introduction

Summary

Location

Archaeological Background

Methodology

Results

Finds

Conclusions

Acknowledgements

References

Appendix 1: Specification

List of Figures

Figure 1: Location

Figure 2: Historic mapping

Figure 3: Ground Floor Plan

Figure 4: Location of the Photographs

List of Plates

Plate 1: Blocked door in the eastern corner of the hall

Plate 2: External appearance of blocked door

Plate 3: Blocked window in the western wall of the Hall

Plate 4: Niche adjacent to the fireplace in the hall

Plate 5: Socket in wall between the fireplace and the intra-mural stairs in the Hall

Plate 6: Fireplace in the Hall

Plate 7: Corbel over the fireplace in the hall

Plate 8: Door to the intra-mural stairs

Plate 9: Detail of the hinge

Plate 10: Infilled fireplace in the Parlour

Plate 11: Infilled opening in the Parlour

Plate 12: Possible supports for a staircase in the Parlour

Plate 13: Trusses

Plate 14: Western principle rafter of one of the trusses

Plate 15: Mortared surface by the blocked door in the Hall

Plate 16: Remains of lower steps of the spiral staircase

Plate 17: Stone block, Context 6

Plate 18: Foundations of the rear wall of the property
Plate 19: Foundation exposed in the Utility Room.
Plate 20: Concrete floors in the Utility Room (from the Kitchen)
Plate 21: Leather fragments from Context 8
Plate 22: Britannia metal sugar bowl
Plate 23: Britannia metal sugar bowl
Plate 24: Britannia metal sugar bowl
Plate 25: Britannia metal sugar bowl
Plate 26: Britannia metal sugar bowl
Plate 27: Britannia metal cream jug
Plate 28: Britannia metal cream jug
Plate 29: Britannia metal cream jug
Plate 30: Britannia metal cream jug
Plate 31: Detail of the foot of the sugar bowl
Plate 32: Detail of the handle of the sugar bowl

INTRODUCTION

Grid Reference	SH 39565 38422
Listed Building Reference	4327
Listed Building Status	II*
NPRN	16746
PRN	11416

Summary

The archaeological watching brief on the groundworks associated with the instillation of underfloor heating at Plas Gwyn revealed the presence of a rammed earth floor and a few features relating to earlier phases of activity. It was also possible to record a number of features revealed by the removal of the plaster on the ground floor of the building.

Location

Plas Gwyn lies approximately 700m SSW of the centre of Y Ffôr, Gwynedd and is set back from the A499 by approximately 110 m (Figure 1). The house forms the north-east corner of a complex of buildings which formed the farm complex of Plas Gwyn, included the listed buildings of the Hamel, (21322), cow house (21321) and possible stables (21320)

Archaeological Background

Plas Gwyn is in the process of being restored and modified for modern use. As part of the pre-planning survey (Planning Application C16/1646/40/LL) of this house Donald Insall Associates carried out a limited desktop study and initial building recording (Jones Hughes 2016). Conditions were subsequently attached to the application including “No development (including any stripping out) shall take place until a specification for a programme of archaeological work has been submitted to and approved in writing by the Local Planning Authority. The development shall be carried out and all archaeological work completed in strict accordance with the approved details.” And “A detailed report on the archaeological work, as required by condition (a) shall be submitted to and approved in writing by the Local Planning Authority within 6 months of the completion of the archaeological fieldwork or completion of the development, whichever is the sooner.” (<https://diogel.cyngor.gwynedd.gov.uk/swiftlg/imagetemp/48770-360537.pdf>). A specification (Appendix 1) was submitted to Jenny Emmett, Senior Development Control Archaeologist, Gwynedd Archaeological Planning Service and this document forms the basis for the archaeological work undertaken.

Plas Gwyn is a Grade II* listed building which has been listed “as a very well preserved sub-medieval type of dwelling retaining its original cross passage, fine stair, and with good external detail including the distinctive and characteristic stepped gables.” (<http://cadwpublic-api.azurewebsites.net/reports/listedbuilding/FullReport?lang=en&id=4327>). At the time, it was thought that the basic building appeared to date from c1600 and was then altered in the seventeenth century by raising the walls to form a full upper floor, and building the gables. The rear wing was added, later, as a lean-to on the SW side of the house. This thought has recently been challenged by R. Suggett (Reported in Jones Hughes 2016, 20) who suggests the house is essentially of one phase of building dating from between AD 1580 and AD 1600. It is a Snowdonia Type House (a storeyed house with gable end chimneys and the ground

floor rooms separated by an inside cross passage) (Smith, 1988, 174, Suggett and Dunn 2014, 14-15) with enhanced detailing and a stone fireplace stair which is a feature of houses from the later sixteenth century (Suggett and Dunn 2014, 35)

A brief online search suggests there are two documents dated to AD 1696 held by the Bangor University Archives (MOST/872 and MOST/1401). One of these (MOST/872) is a six-month lease for Plas Gwyn, amongst other properties. The other (MOST/1401) transferred the ownership of a range of properties from the estate of Hugh Jones of Plas Hen, Caernarvonshire to a trust controlled by Hugh Nanney of Nanney, Merionethshire, and Richard Vaughan of Dolegwyn, Merionethshire, for the benefit of Griffith Vaughan. These documents suggest that the property was already part of a larger estate already by the late seventeenth century. In the AD 1840 Tithe Survey, the farm was part of the Estate owned by the Honourable E. M. Mostyn and was tenanted by Owen Jones with the farm consisting of 25 acres, 3 roods (10.13 Ha) (<http://cynefin.archiveswales.org.uk/en/tithe-maps/transcribe/#Aber-erch&/transcribe>) (Figure 2). By 1846 the property appears as part of the archives associated with the Broom Hall Estate and is mentioned in “Grant of three closes of land [called Lleinia Hirion, Cae ty y Wern, and Cae Gongl] heretofore forming part of a tenement and farm called Plas Gwyn in the parish of Abererch, co. Caernarvon.” (National Library of Wales 505)

The kitchen extension to the NW can be shown to have been constructed between AD 1840 and AD 1888 (Figure 3) as it is not mapped on the Tithe Map, but appears on the First Edition of the Ordnance Survey mapping.

Methodology

The property was visited on 23rd March 2017 to monitor the ground works associated with the insertion of underfloor heating into the property. The opportunity was also taken to record a number of features revealed by the removal of the plaster from the ground floor rooms together with some key elements for the interpretation of the building. The floors of the Hall, Kitchen and Utility Room were dug, by hand, by the builders, to a depth of up to 0.40 m. This process was closely observed and any features or changes in deposits recorded.

Photographs were taken with a Nikon D5300 Digital SLR Camera at a resolution of 24.2 MP with the photographs being taken in RAW (NEF) format. These photographs were converted into JPEG format for use as illustration in this report and TIFF for archiving. The plans 16_152/02 by Curvasure Ltd were used as a basis for locating any features recorded.

Results

The location of the architecture features and archaeological contexts described below are shown on Figure 3.

The removal of the plaster from the walls of the ground floor level revealed several features which were previously hidden. In the southern wall of the Hall (Figure 3) there is a blocked doorway (Plate 1) in the south-eastern wall of the Hall, adjacent to the cross-passage screen. The door way was 1.0 m wide and had a stone lintel. The scar for this doorway, although difficult to see, can also be traced in the exterior wall of the house (Plate 2). The position of this doorway may suggest that the building was sub-divided at some point in its history, into two smaller properties.

A second blocked opening was recorded in the north-western wall of the hall, a window (Plate 3) immediately adjacent to the inserted door to the kitchen. This window was probably blocked when the kitchen extension was built as the dividing wall between the Kitchen and the Utility also blocks the external face of the window.

The removal of the plaster exposed the bressumer of the fireplace in the southwestern end of the Hall together some surrounding features. To the north-west, a deep alcove was exposed (Plate 4). This alcove is 0.55 m wide, but 1.1 m deep and is of unknown function. Found within this alcove were two Britannia Metal vessel (see below) which were part of a late nineteenth century tea set. On the other side of the fireplace, and slightly above is the socket for a timber beam (Plate 5). The function of this socket is not entirely clear; however, it is possible that there was a screen dividing the side of the hearth from the door to the intra-mural stairs, thereby reducing any draft. The fireplace itself has a large, slightly curved, wooden, bressumer (Plate 6) over which there is a stone corbel (Plate 7). This is centrally placed over the fireplace; however, it is at a lower level than the current ceiling and thus may have been either the evidence for an earlier ceiling level. It is more likely, however, that it was used to support some other feature now lost. The door to the intra-mural staircase to the south-east of the fireplace, has a cyclopean door head with a depressed basket arch (Plate 8). The door, itself is a plank door with, blacksmith made, strap hinges (Plate 9) with spade terminals and a zig-zag decoration. It would seem likely that these hinges are contemporary with the construction of the house, however, similar hinges have also been recorded as late as 1740 in Henley, Oxfordshire (Hall, 2005, 49)

In the Parlour, the current, somewhat small, fireplace sits within a much larger, infilled opening. This opening was 2.72 m wide, which is comparable with the 2.98 m of the fireplace in the Hall. It is likely that the current fireplace represents the replacement of a much larger fireplace, probably in the nineteenth century. There is a second blocked opening adjacent to the window in the south-eastern wall of the Parlour (Plate 11). The exact form and size of this opening is difficult to determine and its function is unknown. In the north-west corner of the Parlour are two large stone projecting from the ceiling level (Plate 12). Although the function of these stones is not entirely clear, it is possible that they supported a staircase, and are therefore associated with the possible division of the property suggested by the blocked doorway in the Hall.

It was possible to look within the roof space of the property (Plates 13 and 14) revealing three, relatively simple trusses with slightly cranked collars and trenched purlins.

The archaeological watching brief on the excavation of the floors within the Hall, Kitchen and Utility Room revealed a few features not previously recorded. In the Hall (Figure 3), a layer of relatively loose material (Context 1) gave way to a rammed clay floor (Context 2) which extended across the whole of the room. In the north-east corner of the room this floor had been modified with the addition of lime mortar into the surface (Context 3, Plate 15). The association of this layer with the blocked doorway cannot be coincidental and it probably represents the hardening of the floor in an area of maximum wear. Also in this corner of the room the highly-decayed remains of the sill beam (Context 5) was noted at the foot of the current partition suggesting it occupies a similar position to the cross-passage screen.

In the southern corner of the Hall, the remains of the bottom steps of the spiral staircase were recorded (Context 4, Plate 16). Three large stone blocks, each with a heavily worn top

surface, cut off the southern corner of the hall, extending the line of the spiral, intra-mural staircase into the Hall itself. The clay floor (Context 2) appears to be packed around the northern side of these stones probably suggesting that the steps pre-dates the laying of the clay floor. It is therefore possible that the rammed clay floor is a replacement for an earlier surface.

Towards the north-western side of the hall, approximately 1.0 m from the wall, was a single stone block (Context 6, Plate 17). This stone was below one side of a doorway in a nineteenth century partition, which had been removed before the watching brief took place, and it is likely that this stone was used to support one side of the doorway.

The removal of the floor in the doorway between the Hall and the Kitchen revealed the footings of the original rear wall to the property (Context 7, Plate 18). These consist of a series of natural boulders up to 1.06 x 0.54 x 0.50 m in size with an orange/brown clay bonding. The footings are thicker than the wall they support being up to 1.37 m wide, whilst the wall itself is only 0.98 m thick. It is assumed that the boulders exposed in the south-eastern end of the Utility Room (Plate 19) is also part of the foundations.

No archaeological features were recorded in the Kitchen with only 0.2 m of an orange/brown clayey makeup (Context 8) over natural clay. A similar lack of archaeological features was also noted in the Utility Room which had a sequence of concrete floors directly over the natural clay. Two levels of cement flooring (Contexts 9 and 11) were separated by a thin (0.03 m) layer of orange brown sandy material, presumably a base for the upper cement floor. The upper floor was 0.08 m thick whilst the lower floor was only 0.03 m thick and this layer sat immediately over the natural clay of the area.

Finds

Relatively few finds were recovered during the course of the watching brief and those which were found were all in the relatively disturbed layers at the top of the sequence. Within the Hall, four unabraded sherds of “Buckley” type pottery were found representing two separate vessels. Both of these vessels were steep sided, flat bottomed, deep bowls of purely utilitarian form. The relatively large size of three of the sherds and their unabraded nature would suggest that they were deposited shortly after they were broken, possibly as part of the make-up over the beaten clay floor of the Hall. They are probably of nineteenth or early twentieth century date. A fragment of a lead came was also found in Context 1 suggesting the presence of leaded windows at some time in the history of the house.

Whilst still within Context 1, but laying on Context 3, a broken moss slates was found. This slate is 133 mm wide, 330 mm long and 13 mm thick. The head has been broken, but there is evidence for a centrally placed nail hole at one end. It is a relatively poor-quality slate of Cambrian type, possibly from the Cwm Pennant, or the coastal deposits between Borth y Gest and Cricieth (Richards 1991, 10 and 93). It is probable that this slate was re-used as part of the hardening of the floor by the blocked doorway.

Five sherds of ceramics were found in the disturbed layer in the Kitchen (Context 8) together with two leather fragments. Each of the pottery sherds represents a different vessel consisting of:

- A rim sherd from a bowl approximately 230 mm in diameter with a piecrust decorated rim. The internal surface has a dark brown glazed surface with cream, trailed slip decoration. The sherd is 7.5 mm thick with an orange/brown fabric with thin (less than 1 mm) bands of pale yellow, possibly suggesting a slab built, moulded vessel. Probably 19th century
- A rim sherd from a straight sided bowl, approximately 352 mm in diameter. A slightly everted rim to a vessel with walls 5.5 mm thick. The internal surface is covered with a dark purplish brown glaze. The fabric is a fine reddish brown with few very small grits. Probably 19th century.
- A small, rim, sherd (38 x 15 x 3.7 mm) from a vessel, approximately 140 mm in diameter with an everted rim. Both internal and external surfaces are covered with a dark brown glaze. The fabric is orange/brown in colour. Probably late nineteenth century.
- A small rim sherd (45 x 20 x 4 mm) from a vessel approximately 117 mm in diameter with an everted rim. Both internal and external surfaces are covered with a dark purplish brown glaze. The fabric is a fine orange brown with few inclusions.
- The fragment of a side plate with a scalloped edge, approximately 175 mm in diameter. This sherd is cream glazed and has a hard, pale yellowish cream fabric.

The two fragments of leather, probably come from the same shoe (Plate 21). The larger piece, is the sole of relatively small shoe and is 155 mm long and 80 mm wide, whilst the smaller (125 x 38 mm) curved fragment, has stitch holes along its straight edge.

During the course of the removal of the plaster on the walls of the Hall, the alcove to the right of the fireplace was revealed, within this two, rather battered, Britannia metal vessels were found. These consist of:

- A sugar bowl (Plates 22 – 26) 120 mm high, 115 mm in diameter with a bag like profile and a rim 87 mm in diameter. The external surface has a chased decoration with the lower panel based on floral pattern whilst the pattern around the rim has a more architectural theme, based on a series of intersecting pointed arches, each containing a scrolled pattern. The internal surfaces appear to be silvered, although the base plate appears to be a separate entity which is of a copper alloy with a silvered surface (Plates 25 and 26). The vessel sits on four cast feet in the form of a zoomorphic face, possibly a dragon (Plate 31) and has cast handles (Plate 32) with floral designs.
- The remains of a cream jug (Plates 27 – 30) 105 mm tall and 80 mm in diameter with a 65 mm diameter rim. It has a similar decorative treatment to the sugar bowl and sits on similar cast feet. Once again, the vessel appears to have a copper alloy base plate and Britannia metal body and is silvered inside. The handle has not survived, but a hole in the body (Plate 27) shows the position of the fixing point. The lip is also missing.

Both of these vessels appear to be part of a late nineteenth century tea set constructed of Britannia metal with silvered internal surfaces. Britannia metal is a nineteenth century

development of pewter with a comparatively high proportion of antimony – typically 92% tin, 6% antimony and 2% copper (<http://www.pewtersociety.org/pewter/britannia-metal>) which allowed vessels to be spun on a lathe, thereby reducing the costs and allowing for much thinner walls. There is a similar tea set to that discovered, at Plas Yn Rhiw which has been dated to between 1837 and 1901. (Sugar bowl <http://www.nationaltrustcollections.org.uk/object/648186.3> and jug <http://www.nationaltrustcollections.org.uk/object/648186.4>)

Conclusions

The archaeological watching brief at Plas Gwyn has added some details to the development of the house, particularly from the details revealed by the removal of the plasterwork on the ground floor. This suggests a slightly more complex history to the house with five phases of activity recognised. These are detailed below:

Phase 1: Original construction of Snowdonia type house probably between 1580 and 1600 (Suggett, reported in Jones Hughes 2016). It is not certain whether this was an independent farm at this point, however by 1696 it had already been incorporated into an estate owned by the Vaughan family of Dolegwyn, Merionethshire

Phase 2: Division of the into two smaller properties and the probably construction of a staircase in the north-eastern corner of the Parlour to give access to the first floor at this end of the building

Phase 3: Late eighteenth or early twentieth century. The recombining of the building into a single unit, the conversion of the doorway at the north-western end of the cross-passage into a window, the insertion of the stairs into the cross-passage and the construction of the Dairy. This phase can be shown to have taken place before 1840 as the dairy appears on the Tithe map. It is possible that this phase relates to the farm being incorporated into the Mostyn Estates, however this requires further research to confirm this assertion.

Phase 4: Between 1840 and 1888 (Figure 2) The kitchen extension was added to the north-western side of the house. It is possible that this is contemporary with the transfer of the farm to the Broom Hall Estate around 1846.

Phase 5: Construction of lean-to utility room on the south-west side of the kitchen extension. This took place after 1948 as is shown by the Ordnance Survey mapping of the area.

Acknowledgements

This report was commissioned by J Ellis whose support in this project is gratefully acknowledged. The physical work of digging the floor of the house was carried out by Arthur Jones and Gwylim Evans and their forbearance is recognised. The plans of the house and a copy of the previous study was provided by Franziska Sieck of Donald Insall Associated. The project was monitored by Jenny Emmett for the Gwynedd Archaeological Planning Service.

References

Hall, L. 2005. *Period House Fixtures and Fittings 1300 – 1900*. Countryside Books, Newbury.

- Jones Hughes, P. 2016 *Architectural Development, Aspects of Significance and Concept Options for Proposal. Plas Gwyn, Y Ffôr, Gwynedd. Revision 1.* Donald Insall Associates report
- Richards, A.J. 1991. *A Gazetteer of the Welsh Slate Industry.* Gwas Carreg Gwalch,.
- Smith, P. 1988 *Houses of the Welsh Countryside. A study in historical geography.* HMSO London
- Suggett, R. and Dunn, M. 2014. *Discovering the historic houses of Snowdonia.* Royal Commission on the Ancient and Historical Monuments of Wales, Aberystwyth

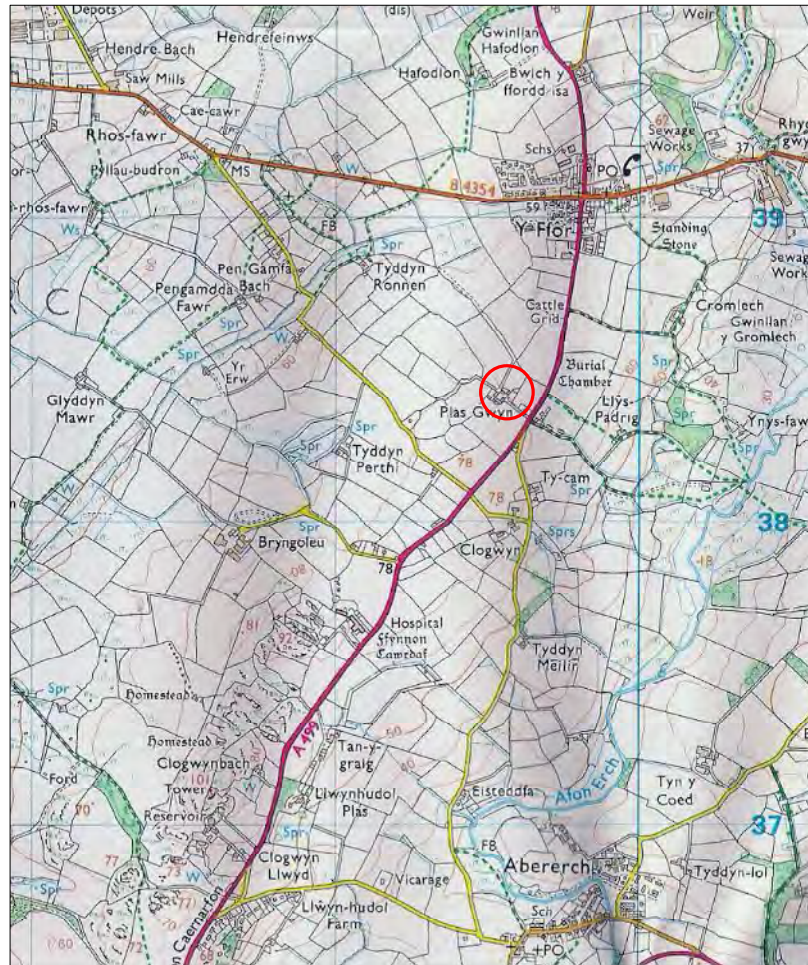


Figure 1: Location
Scale 1:25,000

Reproduced from the ExplorerTM 254, 1:25,000 scale
by permission of the Ordnance Survey ® on behalf of
The Controller of Her Majesty's Stationary Office
© Crown Copyright 2002
All Rights Reserved Licence Number AL 100014722



1840 Tithe Map
(Source, <http://cynefin.archiveswales.org.uk>)



1888 Ordnance Survey Caernarvonshire XXXIII.SW Map
(Source, <http://www.oldmapsonline.org/>)

Figure 2: Historic Mapping
Re-scaled to 1:2,500

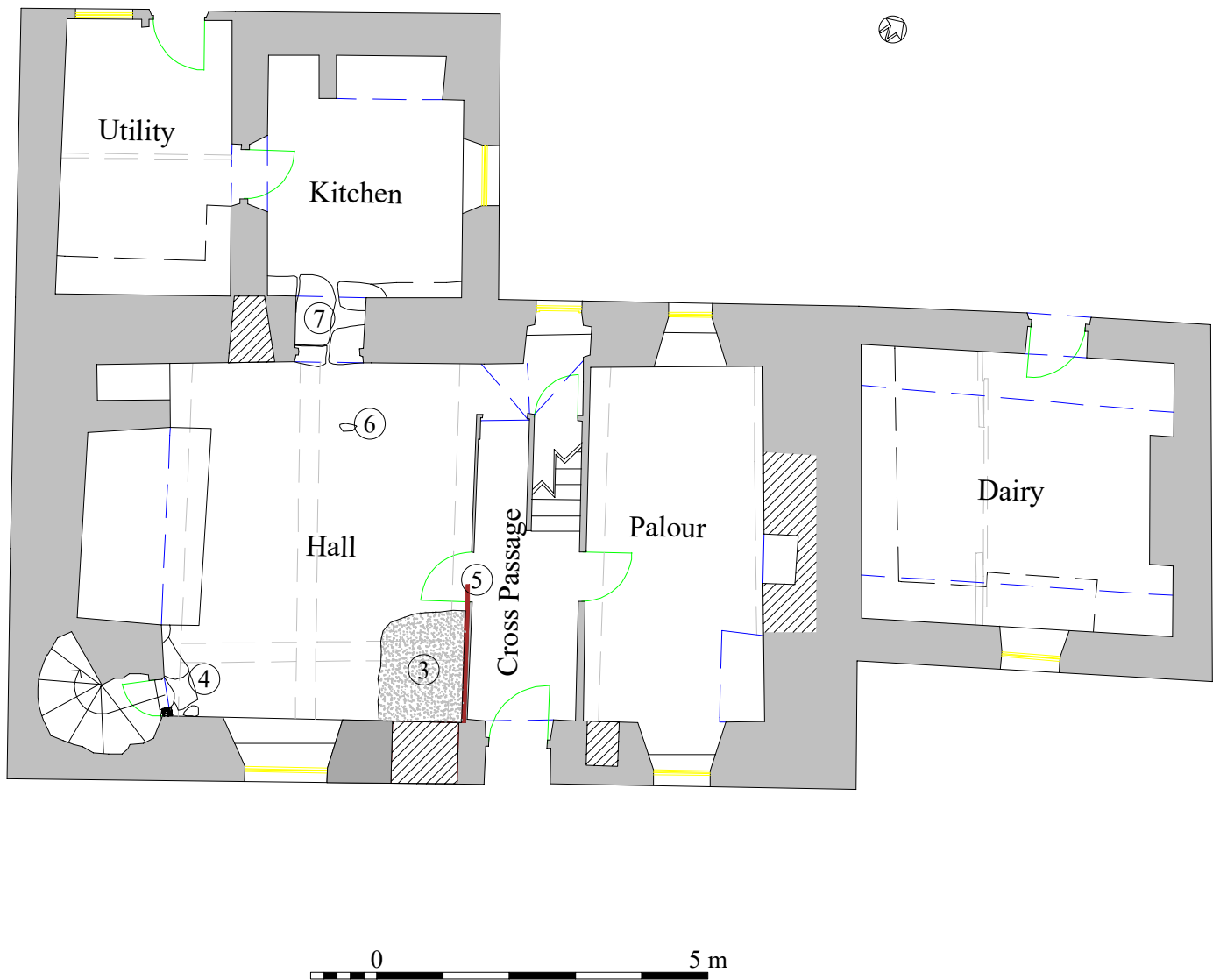


Figure 3: Ground Floor Plan
Scale 1:100

Based on Drawing 16_152/02
by Curvasure



Based on Drawing 16_152/02
by Curvasure

0 5 m

Figure 4: Location of the Photographs
Scale 1:100



Plate 1: Blocked door in the eastern corner of the hall



Plate 2: External appearance of blocked door



Plate 3: Blocked window in the western wall of the Hall



Plate 4: Niche adjacent to the fireplace in the hall



Plate 5: Socket in wall between the fireplace and the intra-mural stairs in the Hall



Plate 6: Fireplace in the Hall



Plate 7: Corbel over the fireplace in the hall



Plate 8: Door to the intra-mural stairs



Plate 9: Detail of the hinge



Plate 10: Infilled fireplace in the Parlour



Plate 11: Infilled opening in the Parlour



Plate 12: Possible supports for a staircase in the Parlour



Plate 13: Trusses



Plate 14: Western principle rafter of one of the trusses



Plate 15: Mortared surface by the blocked door in the Hall



Plate 16: Remains of lower steps of the spiral staircase



Plate 17: Stone block, Context 6



Plate 18: Foundations of the rear wall of the property



Plate 19: Foundation exposed in the Utility Room.



Plate 20: Concrete floors in the Utility Room (from the Kitchen)



Plate 21: Leather fragments from Context 8



Plate 22: Britannia metal sugar bowl



Plate 23: Britannia metal sugar bowl



Plate 24: Britannia metal sugar bowl



Plate 25: Britannia metal sugar bowl



Plate 26: Britannia metal sugar bowl



Plate 27: Britannia metal cream jug



Plate 28: Britannia metal cream jug

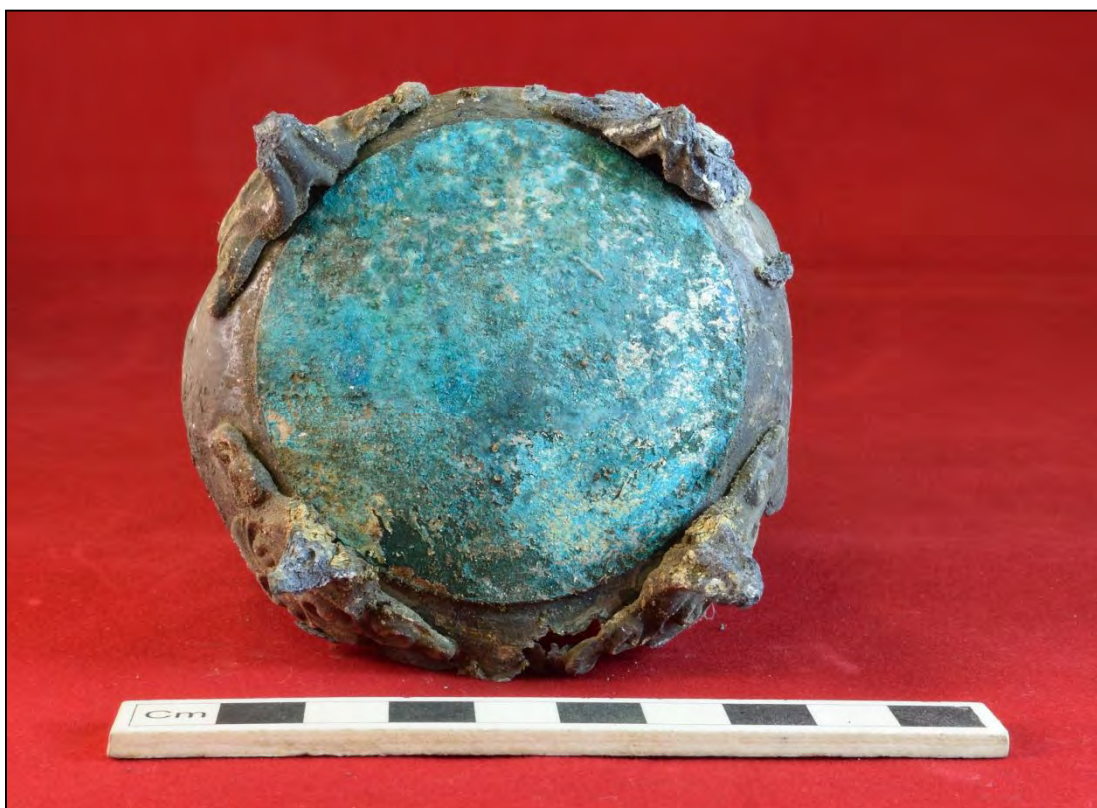


Plate 29: Britannia metal cream jug

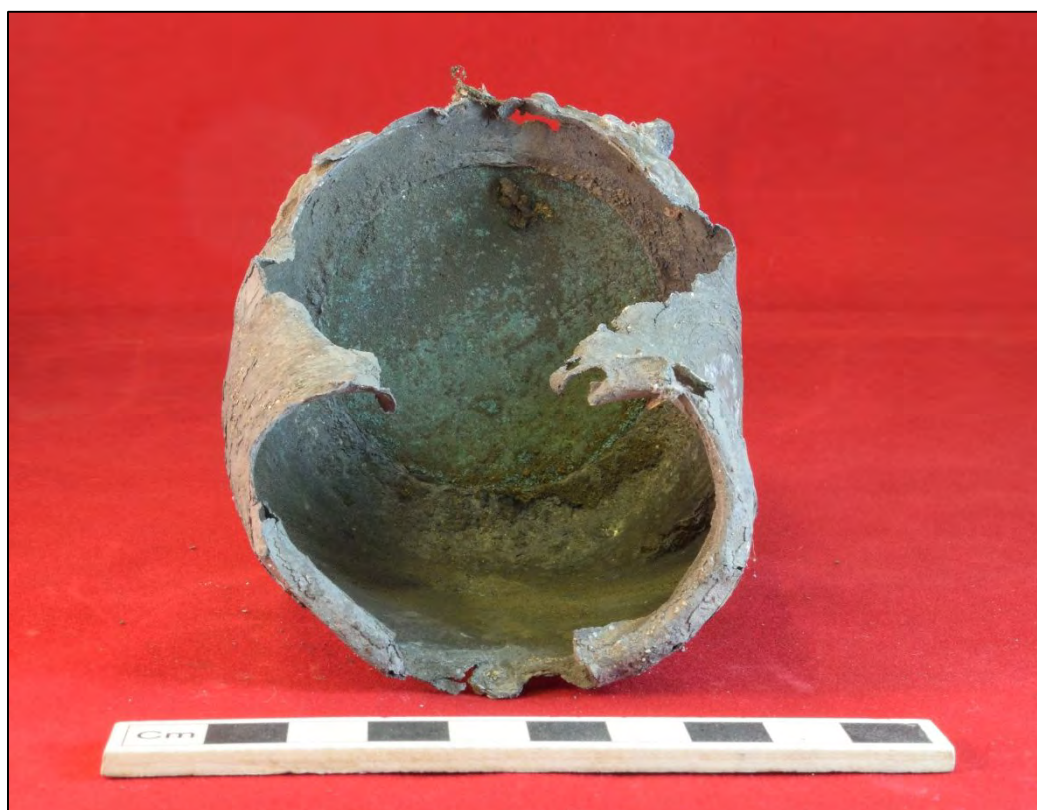


Plate 30: Britannia metal cream jug



Plate 31: Detail of the foot of the sugar bowl



Plate 32: Detail of the handle of the sugar bowl

Appendix 1: Specification for the Archaeological Watching Brief at Plas Gwyn, Y Ffor, Pwllheli, Gwynedd.

Planning Application C16/1646/40/LL
Specification compiled by I.P. Brooks

8 March 2017, Revised 20 March 2017

1. Background

- 1.1. It is intended to restore Plas Gwyn, Y Ffor, Pwllheli, Gwynedd. This house is a Grade II* Listed Building (Reference Number 4327), listed as “a very well preserved sub-medieval type of dwelling retaining its original cross passage, fine stair and with good external detail including the distinctive characteristic stepped gables”
- 1.2. As part of this restoration it is intended to install underfloor heating in the hall.
- 1.3. This specification has been prepared after:
 - 1.3.1. A telephone call with the owner on 6/3/2017
 - 1.3.2. A telephone conversation with Jenny Emmett, Planning Archaeologist with the Gwynedd Archaeological Planning Service
 - 1.3.3. A site visit made on 7/3/2017

2. Aims

- 2.1. To record any archaeological deposits or features revealed by the restoration of the house.

3. Field work program

- 3.1. The fieldwork program will be dependent on the construction program for the restoration however, it is expected to include:
 - 3.1.1. An archaeological watching brief on the excavations needed for the underfloor heating
 - 3.1.2. The recording of any features revealed by the stripping back of the building
 - 3.1.3. Report and archive preparation

4. Methodology

4.1. Watching Brief

- 4.1.1. The Watching Brief will follow the standards laid out in the Institute for Archaeologists. 2008. *Standard and guidance for an archaeological watching brief*
- 4.1.2. A suitably qualified archaeologist will be present during excavations associated with the underfloor heating
- 4.1.3. All features or archaeologically significant deposits revealed by the ground works will be fully recorded including:
 - 4.1.3.1. A written description of deposit: type, components etc.
 - 4.1.3.2. Drawn plans and sections at suitable scales
 - 4.1.3.3. Photographs will be taken with Nikon D5300 Digital SLR Camera at a resolution of 24.2 MP
 - 4.1.3.4. Plan drawing showing extent of deposit.

- 4.1.3.5. Section drawing of any feature recorded to record vertical stratigraphy
- 4.1.4. The Gwynedd Archaeological Planning service will be notified immediately if significant archaeological deposits, features or artefacts are located.
- 4.1.5. The photographs will include metric scales
- 4.1.6. All artefacts and ecofacts will be recorded by context.
- 4.1.7. Each deposit, feature or layer will be identified by a unique context number to which all other records will be related
- 4.1.8. Where possible, features will be sampled to obtain dating and functional evidence.
- 4.1.9. Where possible, elevation drawings of feature half sections to record vertical stratigraphy.
- 4.1.10. Where appropriate, deposits will be sampled for environmental, dating or technological evidence. Samples will be fully recorded and packed appropriately for future analysis.
 - 4.1.10.1. Sampling will be carried out in accordance with the procedures outlined in English Heritage. 2011. *Environmental Archaeology. A guide to the theory and practice of methods, from sampling and recovery to post-excavation.*
- 4.1.11. If human remains are encountered all works will stop until the appropriate permissions have been obtained.
- 4.2. The recording of any features revealed by stripping back
 - 4.2.1. Any architectural features revealed by the stripping back of the walls will be recorded this will include:
 - 4.2.1.1. The location of any feature based on the existing plans by Donald Insall Associated
 - 4.2.1.2. A written description
 - 4.2.1.3. Photographs taken with a Nikon D5300 Digital SLR Camera at a resolution of 24.2 MP
 - 4.2.1.4. A drawn record of the size and form of any feature revealed.
- 4.3. Finds
 - 4.3.1. Any flint artefacts will be studied by I.P. Brooks for Engineering Archaeological Services Ltd.
 - 4.3.2. Any pottery will be studied by an appropriate specialist to be agreed in consultation with the Curatorial Archaeologist
 - 4.3.3. Any metal or other special finds will be studied by an appropriate specialist to be agreed in consultation with the Curatorial Archaeologist
 - 4.3.4. All ceramic, bone and stone artefacts will be cleaned and processed immediately following the watching brief.
 - 4.3.5. Metal artefacts will be stored and managed on site according to the UK Institute of Conservation Guidelines.
 - 4.3.6. Any samples taken for environmental analysis will be assessed and studied by an appropriate specialist to be agreed in consultation with the Curatorial Archaeologist
 - 4.3.7. All finds will be bagged by context with the exception of closely datable or “special” finds which will be recorded with a 3 D position and will be bagged separately

4.3.8. The requirement for specialist archaeological reports will be discussed with the Curatorial Archaeologist. The extent and cost of any such report will be discussed with the client and a suitable level of response formulated in discussion between the Archaeologist, Curatorial Archaeologist and the Client

4.4. Archive Preparation and Report Preparation

4.4.1. On completion of fieldwork an archive of the results will be prepared.

4.4.2. The digital records will be archived with the Royal Commission on Ancient and Historic Monuments of Wales

4.4.2.1. The digital archive will be prepared in line with Royal Commission on Ancient and Historic Monuments of Wales. 2015. Guidelines for digital archives

4.4.3. The deposition of any find with a local museum will be discussed with the owner and the development control archaeologist with a strong recommendation that any finds are deposited in a suitable local museum.

4.4.4. A summary report on the findings of the investigations will be prepared and completed within four weeks from completion of the project. This will summarise the results of the project including;

4.4.4.1. A site location plan

4.4.4.2. A plan of the site locating any features or archaeological deposits located.

4.4.4.3. An outline methodology

4.4.4.4. The results of the Watching Brief.

4.4.4.5. The results of the recording of any features revealed

4.4.4.6. A full bibliography

4.4.4.7. A copy of the agreed specification

4.4.4.8. An assessment of the potential for further archaeological investigation

4.4.5. Up to five copies of the report will be provided.

4.4.6. A digital copy of the report will also be provided.

4.4.7. A digital copy of the report will be supplied to the Gwynedd Historic Environment Record

4.4.8. A digital copy of the report will be supplied to Gwynedd Archaeological Planning Service

5. General

5.1. CIfA Code of Conduct

5.1.1. All staff will abide by, and all procedures be carried out in accordance with the Chartered Institute for Archaeologists' Code of Conduct

5.2. Health and Safety

5.2.1. EAS Ltd adopt and adhere to safe working practices at all times. A copy of the company's general statement of policy is available on request.

6. Staff

6.1. The project will be directed by Dr I.P. Brooks MIFA FSA

6.2. Project Staff will include Dr I.P. Brooks MifA FSA.

7. Curatorial Monitoring

7.1. The Gwynedd Archaeological Planning Service will be informed as to the start date and progress of the survey.

8. Insurance

8.1.1.EAS Ltd carries all necessary Public and Employee Liability Insurances.

8.1.2.EAS Ltd carries Professional Indemnity Insurance

9. Copyright

9.1.1.EAS Ltd shall retain full copyright of any commissioned reports, tender documents or other project documentation, under the *Copyrights, Designs and Patents Act 1988* with all rights reserved: excepting that it hereby provides an exclusive licence to the client for the use of such documents by the client in all matters directly relating to the project as described in the Project Specification.

9.1.2.EAS Ltd is prepared to assign copyright at the request of the client.