

Pen-Y-Pass Park, Llanberis

Briff Gwyllo Archeolegol / Archaeological Watching Brief



Archaeoleg Gwynedd
Heneb
Gwynedd Archaeology

Pen-Y-Pass Park, Llanberis

Briff Gwyllo Archeolegol/ Archaeological Watching Brief

Yr Amgylchedd Hanesyddol yn Cofnodi Prif Gyfeirnod /
Historic Environment Record Event Primary Reference Number: 46732

Prosiect Rhif / Project No. HD24-014

Adroddiad Rhif / Report No. 1796

Wedi'i baratoi ar gyfer / Prepared for: Mitie Telecoms

Tachwedd/October 2024

Ysgrifenydd gan / Written by: Anne Marie Oattes, Jessie Baumgardner & Stuart Murphy

Delwedd clawr blaen / Front Cover image: View to NW (scenic shot)(G2816_011)

Heneb: Ymddiriedolaeth Archaeoleg Cymru.

Heneb yw'r enw masnachu Ymddiriedolaeth Archaeolegol Cymru

Cwmni Cyfyngedig (1198990) ynghyd ag Elusen Gofrestredig (504616) yw'r
Ymddiriedolaeth

Heneb: Trust for Welsh Archaeology.



Heneb is the trading name of The Trust for Welsh Archaeology

The Trust is both a Limited Company (1198990) and a Registered Charity
(504616)

Registered address: Corner House, 6 Carmarthen Street, Llandeilo,
Carmarthenshire, SA19 6AE

Cadeirydd / Chair: Dr Carol Bell PSG / CEO: Richard Nicholls

Mae Ymddiriedolaeth Archaeolegol Gwynedd yn Gwmni Cyfyngedig (Ref Cof. 1180515) ac yn Elusen (Rhif Cof. 508849)
Gwynedd Archaeological Trust is both a Limited Company (Reg No. 1180515) and a Charity (reg No. 508849)

Approvals Table				
	Role	Printed Name	Signature	Date
Originated by	Document Author	Jessie Baumgardner Stuart Murphy	Jessie Baumgardner Stuart Murphy	03/12/2024
Reviewed by	Document Reviewer	John Roberts		03/12/2024
Approved by	Principal Archaeologist	John Roberts		03/12/2024

Revision History			
Rev No.	Summary of Changes	Ref Section	Purpose of Issue

CONTENTS

CRYNHODEB ANHECHNEGOL	4
NON-TECHNICAL SUMMARY	4
1 INTRODUCTION	5
1.1 Aims and Objectives.....	6
1.2 Acknowledgements.....	6
2 ARCHAEOLOGICAL AND HISTORICAL BACKGROUND	7
2.1 Introduction.....	7
2.2 Historic Background.....	7
2.3 Historic Mapping.....	8
3 METHODOLOGY	9
3.1 Introduction.....	9
3.2 Fieldwork Methodology.....	10
3.3 Data Management Plan.....	11
3.4 Selection Strategy.....	12
4 RESULTS.....	13
4.1 Introduction.....	13
4.2 Mast Area	13
4.3 Cable Duct	13
4.4 Cabinet Area	13
4.5 Pyg & Miners Track Area.....	14
5 CONCLUSIONS	15
6 SOURCES CONSULTED	16
FIGURE 01	17
Reproduction of Mitie Drawing No. EAS1019F_78823_SRN1019_M001 Issue F, showing site location. Scale: as shown.	17
FIGURE 02.....	18
Reproduction of Mitie Drawing No. EAS1019F_78823_SRN1019_M001 Issue G, showing proposed site plan and proposed site elevations. Scale: as shown.....	18
APPENDIX I	19
Reproduction of Heneb: Gwynedd Archaeology approved Written Scheme of Investigation, July 2024.....	19
APPENDIX II	20
Heneb: Gwynedd Archaeology Trust Photographic Metadata.....	20
APPENDIX III.....	21

Heneb: Gwynedd Archaeology Selection Strategy Final..... 21

FIGURES

Figure 01: Reproduction of Mitie Drawing No. EAS1019F_78823_SRN1019_M001 Issue F, showing site location. Scale: as shown.

Figure 02: Reproduction of Mitie Drawing No. EAS1019F_78823_SRN1019_M001 Issue G, showing proposed site plan and proposed site elevations. Scale: as shown.

PLATES

Plate 1: View of tower base pit showing topsoil and bedrock and length of pit; scale 1x3m; view from SE (archive reference: G2816_001).

Plate 2: View of tower base pit showing topsoil and bedrock showing width; scale 1x3m; view from S (archive reference: G2816_002).

Plate 3: View of tower base pit showing topsoil and bedrock showing depth; scale 1x3m; view from E (archive reference: G2816_003).

Plate 4: View of tower base pit showing topsoil and bedrock showing depth; scale 1x3m; view from SSE (archive reference: G2816_004).

Plate 5: View of tower base pit showing topsoil and bedrock showing depth; scale 1x3m; view from SSE (archive reference: G2816_005).

Plate 6: Location shot of working area; scale not used; view from SSE (archive reference: G2816_006).

Plate 7: Location shot showing site to SW of car park; scale not used; view from NE (archive reference: G2816_007).

Plate 8: Location shot of tower base pit and cable duct trench - view to the SE; scale not used; view from SE (archive reference: G2816_008).

Plate 9: Location shot showing site to SW of car park; scale not used; view from NW (archive reference: G2816_009).

Plate 10: View to NW (scenic shot); scale not used; view from WSW (archive reference: G2816_010).

Plate 11: View to SE (scenic shot); scale not used; view from SE (archive reference: G2816_011).

Plate 12: Excavated area at SE edge of car park close to Pyg and miner's tracks gates (for cabinets); scale 1x1m; view from NW (archive reference: G2816_012).

Plate 13: Excavated area at SE edge of car park close to Pyg and miner's tracks gates (for cabinets); scale 1x1m; view from SE (archive reference: G2816_013).

Plate 14: Location shot showing gates to Pyg and miner's tracks; scale not used; view from NE (archive reference: G2816_014).

Plate 15: Closeup view of timber, metal and plastic in made ground/backfill; scale not used; view from N/A (archive reference: G2816_015).

Plate 16: View of excavated area; scale 1x1m; view from S (archive reference: G2816_016).

Plate 17: View of excavated area for cabinets showing depth of soil, fence post and bedrock in section; scale 1x1m; view from ESE (archive reference: G2816_017).

Plate 18: View along partially excavated cable duct trench; scale not used; view from ESE (archive reference: G2816_018).

Plate 19: View along partially excavated cable duct trench; scale not used; view from SE (archive reference: G2816_019).

Plate 20: View of W side of cable trench with topsoil removed; scale not used; view from ESE (archive reference: G2816_020).

Plate 21: View of excavated pit for tower base and cable duct trench; scale not used; view from SW (archive reference: G2816_021).

Plate 22: View of excavated pit for tower base and cable duct trench; scale not used; view from NW (archive reference: G2816_022).

Plate 23: View of spoil heap - mostly topsoil; scale not used; view from N/A (archive reference: G2816_023).

Plate 24: View of spoil heap - more clayey stony subsoil and rock; scale not used; view from N/A (archive reference: G2816_024).

Plate 25: View along unexcavated cable duct trench with topsoil removed; scale not used; view from SW (archive reference: G2816_025).

Plate 26: View of area to be excavated for cabinets at of cable duct; scale not used; view from N/A (archive reference: G2816_026).

Plate 27: View of area to be excavated for cabinets at of cable duct; scale not used; view from N/A (archive reference: G2816_027).

Plate 28: Partially excavated area (made ground) showing plastic in spoil; scale not used; view from N/A (archive reference: G2816_028).

Plate 29: Turf removed from area for cabinets; scale not used; view from N/A (archive reference: G2816_029).

Plate 30: Ground reduced to glacial clay at edge of car park; scale not used; view from N/A (archive reference: G2816_030).

Plate 31: Ground reduction to natural clay at the edge of the car park (miners track); scale not used; view from SW (archive reference: G2816_031).

Plate 32: Ground reduction to natural clay at the edge of the car park (miners track); scale not used; view from SW (archive reference: G2816_032).

Plate 33: Shot of "made ground" backfill; scale not used; view from S (archive reference: G2816_033).

Plate 34: Shot of "made ground" backfill; scale not used; view from SSW (archive reference: G2816_034).

Plate 35: Shot of "made ground" backfill showing broken bricks; scale not used; view from SSW (archive reference: G2816_035).

Plate 36: Window frame removed from made ground in excavation for cabinets; scale not used; view from N/A (archive reference: G2816_036).

Plate 37: Excavation area mid-ex for cable duct. Topsoil removed to bedrock; scale not used; view from SE (archive reference: G2816_037).

Plate 38: Excavation area mid-ex for cable duct. Topsoil removed to bedrock; scale not used; view from SE (archive reference: G2816_038).

Plate 39: Excavation area mid-ex for cable duct. Topsoil removed to bedrock; scale not used; view from SE (archive reference: G2816_039).

Plate 40: Excavation area mid-ex for cable duct. Topsoil removed to bedrock; scale not used; view from SE (archive reference: G2816_040).

Plate 41: Length of cable duct (excavated through rock); scale not used; view from NW (archive reference: G2816_041).

CRYNHODEB ANHECHNEGOL

Comisiynwyd Heneb Archaeolegol Gwynedd gan Mitie Telecoms i ymgymryd â brîff gwylio archeolegol yn ystod gosod mast telegyfathrebu monopol 15m uchel gydag antenâu cysylltiedig, cyfarpar ar y ddaear a seilwaith ategol ym Maes Parcio Pen y Pass, Nant Gwynant. LL55 4NU. Cynhaliwyd y brîff gwylio ar 14 Hydref a 6 Tachwedd 2024.

Ni nodwyd unrhyw weithgaredd archaeolegol o fewn cyfyngiadau'r ardaloedd a orchuddiwyd.

NON-TECHNICAL SUMMARY

Heneb Gwynedd Archaeology was commissioned by Mitie Telecoms to undertake an archaeological watching brief during the installation of a 15m high monopole telecoms mast with associated antennas, ground-based apparatus and ancillary infrastructure at Pen y Pass Car Park, Nant Gwynant. The watching brief was undertaken between the 14th of October and the 6th of November 2024.

No archaeological activity was identified within the confines of the monitored areas.

1 INTRODUCTION

Heneb: Gwynedd Archaeology (Archaeological Services) were commissioned by *Mitie Telecoms* to undertake an archaeological watching brief during the installation of a 15m high monopole telecoms mast with associated antennas, ground-based apparatus and ancillary infrastructure at Pen y Pass Car Park, Nant Gwynant LL55 4NU (NGR SH64725562; cf. [Figure 01](#)). The site is located southeast of Llanberis, with the Pyg and Miner's Tracks leading up the mountain commencing at the car park edge. The works took under planning reference NP2/11/52L, with the watching brief required under Conditions 7 and 8.

The watching brief was monitored by Heneb Planning Service and in accordance with an approved written scheme of investigation ([Appendix I](#)). In line with the regional Historic Environment Record (HER) requirements, the HER was contacted at the onset of the project to ensure that any data arising was formatted in a manner suitable for accession; the HER Event Primary Reference Number for this project is **E46732**.

The archaeological watching brief was undertaken during October and November 2024 and in accordance with the following guidelines:

- Guidance for the Submission of Data to the Welsh Historic Environment Records (HERs) Version 2 (The Welsh Archaeological Trusts, 2022);
- Guidelines for digital archives (Royal Commission on Ancient and Historic Monuments of Wales, 2015);
- Management of Archaeological Projects (English Heritage, 1991);
- Management of Research Projects in the Historic Environment: The MoRPHE Project Managers' Guide (Historic England, 2015);
- Standard for archaeological monitoring & recording (Chartered Institute for Archaeologists, 2023);
- Standard and guidance for the collection, documentation, conservation and research of archaeological materials (Chartered Institute for Archaeologists, 2020a); and
- Standard and guidance for the creation, compilation, transfer and deposition of archaeological archives (Chartered Institute for Archaeologists, 2020b).
- Universal Guidance for archaeological monitoring & recording (Chartered Institute for Archaeologists, 2023);

Heneb: Gwynedd Archaeology is part of Heneb: Trust for Welsh Archaeology, which is a Registered Charity Heneb: Gwynedd Archaeology with the Chartered Institute for Archaeologists (CIfA).

1.1 Aims and Objectives

The key aims and objectives were to:

- establish the date and nature of any archaeological remains identified and assess their implications in conjunction with the known archaeological record for the immediate area;
- to place the results in context (if applicable), with reference made to A Research Framework for the Archaeology of Wales Version 03, Final Refresh Document (March 2017); and
- if no additional archaeological activity is identified, establish why this may be the case.

1.2 Acknowledgements

Heneb: Gwynedd Archaeology would like to thank the following for their contribution and support:

- Heneb: Gwynedd Archaeology project team: Anne Marie Oattes;
- Client: Mitie Telecoms;
- Contractor: Atina; and
- Heneb: Gwynedd Archaeology Planning Archaeologist: Tom Fildes and Jenny Emmett.

2 ARCHAEOLOGICAL AND HISTORICAL BACKGROUND

2.1 Introduction

A brief examination of the Gwynedd Historic Environment Record (HER) identified that there is no archaeology within the route of the mast, cable trench or cabinet area however, there is known activity within proximity of the *Mitie Telecoms* works.

2.2 Historic Background

The site falls within the Registered Historic Landscape of Dinorwig (ref. HLW (Gw) 6) and the Historic Landscape Character area of Unenclosed Mountain (North Carneddau). There are known prehistoric and early medieval archaeological assets in proximity to the site and the regional Historic Environment Record records three Primary Reference Numbers (PRNs) at the location of the existing car park:

- PRN 6118 (NGR SH64765559): Described in the regional HER as the site of a Bronze Age cairn that was partly robbed when the Gorphwysfa Hotel was built. It was marked on the 1st ed. 6-inch map and its position is that now occupied by the Pen-y-pass car park, so must have been flattened. There are no records of any finds from this cairn;
- PRN 6119 (NGR SH64705560): Described in the regional HER as the site of seven or eight early medieval long cist graves that are said to have been destroyed when the road was built below Gorphwysfa on the Llanberis side. The location is a saddle between the rising ground of Snowdon on the southwest and the Glyderau on the north;
- PRN 29606 (NGR SH64755565): Listed in the regional HER as a post-medieval copper trial mine. Destroyed when Gorphwysfa Hotel was built cist in which were found a piece of flint and a probable incense cup. Mentioned by Llwyd as being covered in white quartz;
- PRN20799 (NGR SH64705560): Listed in the regional HER as a post-medieval copper trial mine; and
- PRN 98892 (NGR SH64735563): Listed in the regional HER as the site of wartime roadblock "Pen y Pass", listed in wartime document held at Caernarfon Archives, (ref.: XC12/2/34).

This demonstrated a potential for activity in the area. The A4086 road close to the car park is the postulated route Roman Roads (PRN17811 and PRN17824) leading to Pen-y-Gwryd marching camp (PRN 1479) c.1km to the east, suggesting there was also potential for activity from this period.

2.3 Historic Mapping

The 1st, 2nd, 3rd and 4th edition Ordnance Survey 6-inch to 1-mile Caernarvonshire County Series Ordnance Survey maps (Sheet XX.NE, published 1891, 1901, 1920 and 1953 respectively), all show the Gorphwysfa Hotel (now part of the Youth Hostel Association) established alongside the road. On the opposite side of the road is a trapezoidal area with several small outbuildings alongside the road. There are no significant changes between the map editions, with the trapezoidal area subsequently expanded into a larger car park during the twentieth century. On all four editions of the six-inch map the site of the Bronze Age cairn (PRN 6118; NGR SH64765559) is listed as *Carnedd*.

3 METHODOLOGY

3.1 Introduction

An archaeological watching brief is defined by the Chartered Institute for Archaeologists as a formal programme of observation and investigation conducted during any operation carried out for non-archaeological reasons where there is a possibility that archaeological deposits may be disturbed or destroyed. The programme will result in the preparation of a report and ordered archive (CIfA, 2023).

An archaeological watching brief can be divided into four categories:

- comprehensive (present during all ground disturbance)
- intensive (present during sensitive ground disturbance)
- intermittent (viewing the trenches after machining)
- partial (as and when seems appropriate).

The archaeological watching brief was conducted in the area of the Mitie Telecoms groundworks as depicted on [Figures 01](#) and [02](#).

3.2 Fieldwork Methodology

The archaeological watching was undertaken on the 10th of October and 6th of November 2024

- Heneb monitored all intrusive groundworks associated with the cable trench route. The cable trench was opened by a tracked excavator with a toothless bucket. All attendances and photographs were recorded using Heneb: Gwynedd Archaeology pro-formas. The records included topsoil and subsoil depths as well as the composition of the glacial horizon
- Photographic images were taken using a digital SLR camera (Nikon D3100; 4, 608 x 3, 072 resolution (14.2 effective megapixels)) set to maximum resolution in RAW format; a photographic record was maintained on site using Heneb: Gwynedd Archaeology pro-formas and digitised in *Microsoft Access* as part of the fieldwork archive and dissemination process. Photographic images have been archived in TIFF format using Adobe Photoshop; a total of forty-one images were taken (refs. **G2816_001** to **G2816_041**; cf. [Appendix II](#))

3.3 Data Management Plan

The fieldwork data has been used as the basis for the physical and digital dataset archives and used to compile the project report. The physical archive has been stored in a designated project folder and the location confirmed in the Trust project database; the digital dataset has been stored on a dedicated Trust server, with the location confirmed in the Trust project database via a specific hyperlink. There is no de-selected digital data.

External datasets for the regional HER and RCAHMW are as follows:

- HER: digital report (PDF format) and Event PRN summary (Microsoft Excel format); the report and dataset have been prepared in accordance with the required standards set out in *Guidance for the Submission of Data to the Welsh Historic Environment Records (HERs)* (Version 2); and
- RCAHMW: a digital report (PDF format) and digital archive dataset have been prepared in accordance with the *RCAHMW Guidelines for Digital Archives Version 1*. The dataset includes:
 - Photographic metadata (Microsoft Access);
 - Photographic archive (TIFF format);
 - Project Information form (Microsoft Excel);
 - File Information form (Microsoft Excel) – Microsoft Word report text final;
 - File Information form (Microsoft Excel) – Photographic metadata (general);
 - File Information form (Microsoft Excel) – Adobe PDF report final; and
 - File Information form (Microsoft Excel) - Photographic metadata (detail).

3.4 Selection Strategy

As defined in *Standard and guidance for the creation, compilation, transfer and deposition of archaeological archives* (Chartered Institute for Archaeologists, 2020) section 3.3.1, a project specific selection strategy and data management plan should be prepared. In support of this, the Chartered Institute for Archaeologist (CIfA), have stated that it is “widely accepted that not all the records and materials collected or created during the course of an Archaeological Project require preservation in perpetuity. These records and materials constitute the Working Project Archive which will be subject to Selection, in order to establish what will be retained for long-term curation”. The aim of selection is to ensure that all the elements retained from the Working Project Archive for inclusion in the Archaeological Archive are appropriate to establish the significance of the project and support “future research, outreach, engagement, display and learning activities”. Selection should be “focused on selecting what is to be retained to support these future needs, rather than deciding what can be dispersed” and can be qualified by a selection strategy, which details the project-specific selection process, agreed by all parties (including Heneb: Gwynedd Archaeology Planning Service, client and/or landowner), which will be applied to a Working Project Archive prior to its transfer into curatorial care as the Archaeological Archive.

- The aims and objectives of the project.
- The brief and/or Written Scheme of Investigation (WSI)).
- The Collecting Institution’s collection policy and/or deposition guidelines.
- Regional & relevant thematic or period specific research frameworks.
- The project’s Data Management Plan (DMP).
- Internal recording and reporting policies.
- Material-specific guidance documents.

The final project specific selection strategy is in [Appendix III](#).

4 RESULTS

4.1 Introduction

Heneb: Gwynedd Archaeology (Archaeological Services) were commissioned by *Mitie Telecoms* to undertake an archaeological watching brief during the installation of a 15m high monopole telecoms mast with associated antennas, ground-based apparatus and ancillary infrastructure at Pen y Pass Car Park, Nant Gwynant LL55 4NU (NGR SH64725562; The site is located southeast of Llanberis (cf. [Figure 01](#)), with the Pyg and Miner's Tracks leading up the mountain commencing at the car park edge.

4.2 Mast Area

The mast area is situated Northwest of Pen Y Pass car park (cf. Figure 02).

The pit for the base of the mast was excavated through the topsoil and bedrock (cf. Plates 01, 02, 03, 04, 05, 06, 21, 22), the pit measured 2.8m long by 2.8m wide and varied in depth from 1.5m to 0.9m due to being excavated on sloping ground. The topsoil layer was between 0.3m and 0.4m deep, there was a clayey gravel layer encountered in the northeast side of the pit this measured 0.3m deep. No archaeological activity was identified within the confines of the mast area pit.

4.3 Cable Duct

The cable duct trench runs between the cabinet area to the east of the car park up to the mast pit (cf. [Figure 02](#))

A 30m long cable duct trench was excavated (cf. Plates 18, 19, 20, 21, 22, 25, 37, 38, 39, 40, 41) from the mast pit in the northwest to the cabinet area in the southeast to allow the cables to be buried, this trench measured 30m long by 1.2m wide and varied in depth from 0.9m to 1m, the trench was excavated through the shallow peaty topsoil and bedrock. The blackish brown peaty silt topsoil varied in depth along the cable duct trench ranging from 0.1m to 0.3m deep. A brownish grey mixed clayey gravel layer was present at the northwest end of the mast pit. No archaeological activity was identified within the cable duct trench.

4.4 Cabinet Area

The cabinet area is located to the east of the car park (cf. [Figure 02](#))

An area of ground reduction took place to the West of the car park at Pen Y Pass this was to allow for the installation of cabinets associated with the mast (cf. Plates 17, 26, and 27). An area measuring 13m long by 2.7m wide was excavated, the upper layer of this area comprised

of made ground with brick, plastic and an old window frame contained within (cf. Plate 36). No archaeological activity was identified within the cabinet area.

4.5 Pyg & Miners Track Area

An area of ground was excavated close to the starting points of the Pyg and Miners tracks by the car park. This area as seen in the 15m long section (cf. 12, 13, 14, , 16, 17, 30, 31, 32) consisted of a layer of topsoil sat on the bedrock and an area of possible redeposited or built up ground sitting above and orange/brown clay layer; this began approximately midway through the section and contained a large wooden modern post, metal and plastic (cf. Plate 15 and 17). No archaeological activity was identified in this area.

5 CONCLUSIONS

Heneb: Gwynedd Archaeology was commissioned by Mitie Telecoms to oversee the installation of a 15m high monopole telecoms mast with associated antennas, ground-based apparatus and ancillary infrastructure at Pen y Pass Car Park, Nant Gwynant.

The site falls within the Registered Historic Landscape of Dinorwig. There are known prehistoric and early medieval archaeological assets in proximity to the site and the regional Historic Environment Record records three Primary Reference Number assets at the location of the existing car park.

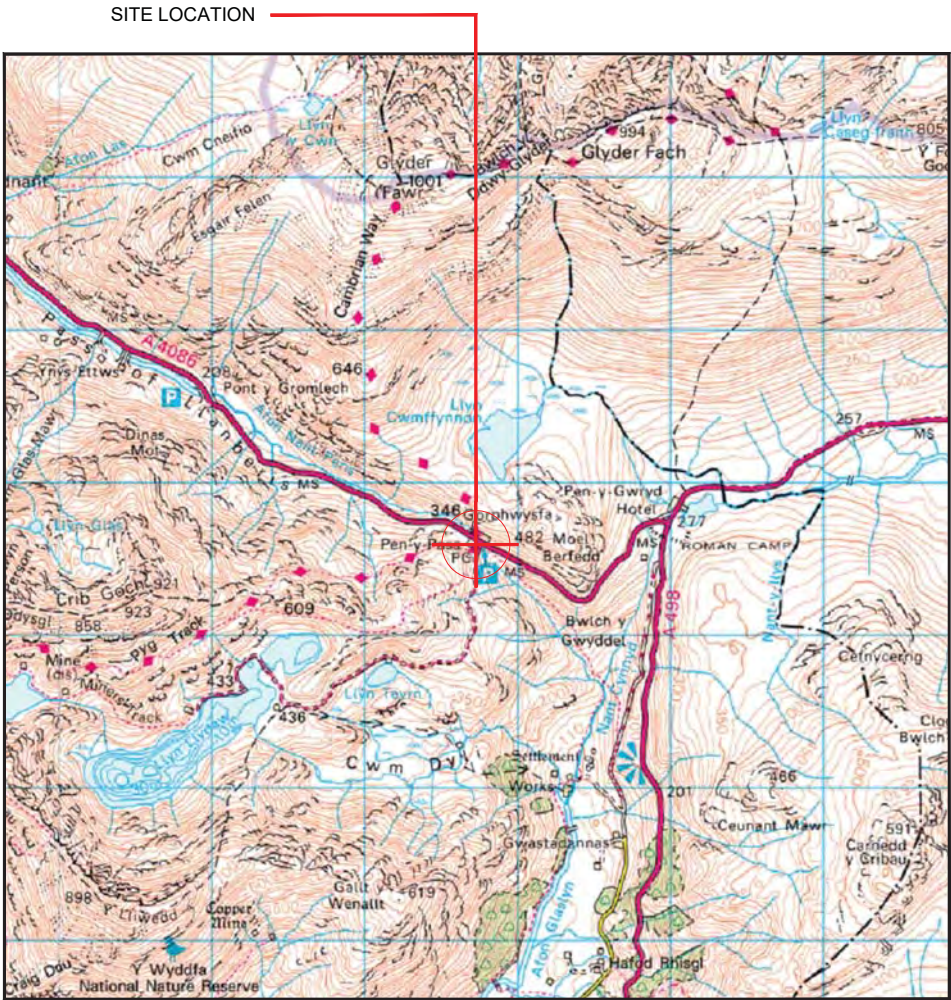
No archaeological activity was identified in any of the excavated areas monitored across the site; this was likely due to the confined nature of the works and the extent of previous disturbance associated with existing infrastructure. The black-brown peat-rich silt topsoil observed in all the excavated areas is typical of the soil stratigraphy found in an upland heath environment.

6 SOURCES CONSULTED

1. Chartered Institute for Archaeologists, 2020, Standard and guidance for the collection, Documentation, Conservation and Research of Archaeological Materials
2. Chartered Institute for Archaeologists, 2020. Standard and Guidance for Archaeological Watching Brief
3. English Heritage, 1991, Management of Archaeological Projects (MAP2)
4. Historic England, 2015, Management of Research Projects in the Historic Environment (MoRPHE)
5. Royal Commission on Ancient and Historic Monuments of Wales, 2015, Guidelines for digital archives
6. The Welsh Archaeological Trusts, 2022. *Guidance for the Submission of Data to the Welsh Historic Environment Records (HERs)* Version 2.

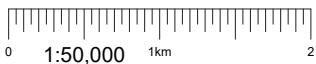
FIGURE 01

**Reproduction of Mitie Drawing No. EAS1019F_78823_SRN1019_M001
Issue F, showing site location. Scale: as shown.**



Reproduced by permission of Ordnance Survey on behalf of the Controller of Her Majesty's Stationery Office
All rights reserved. © Crown Copyright licence no. 100047474

SITE AREA PLAN

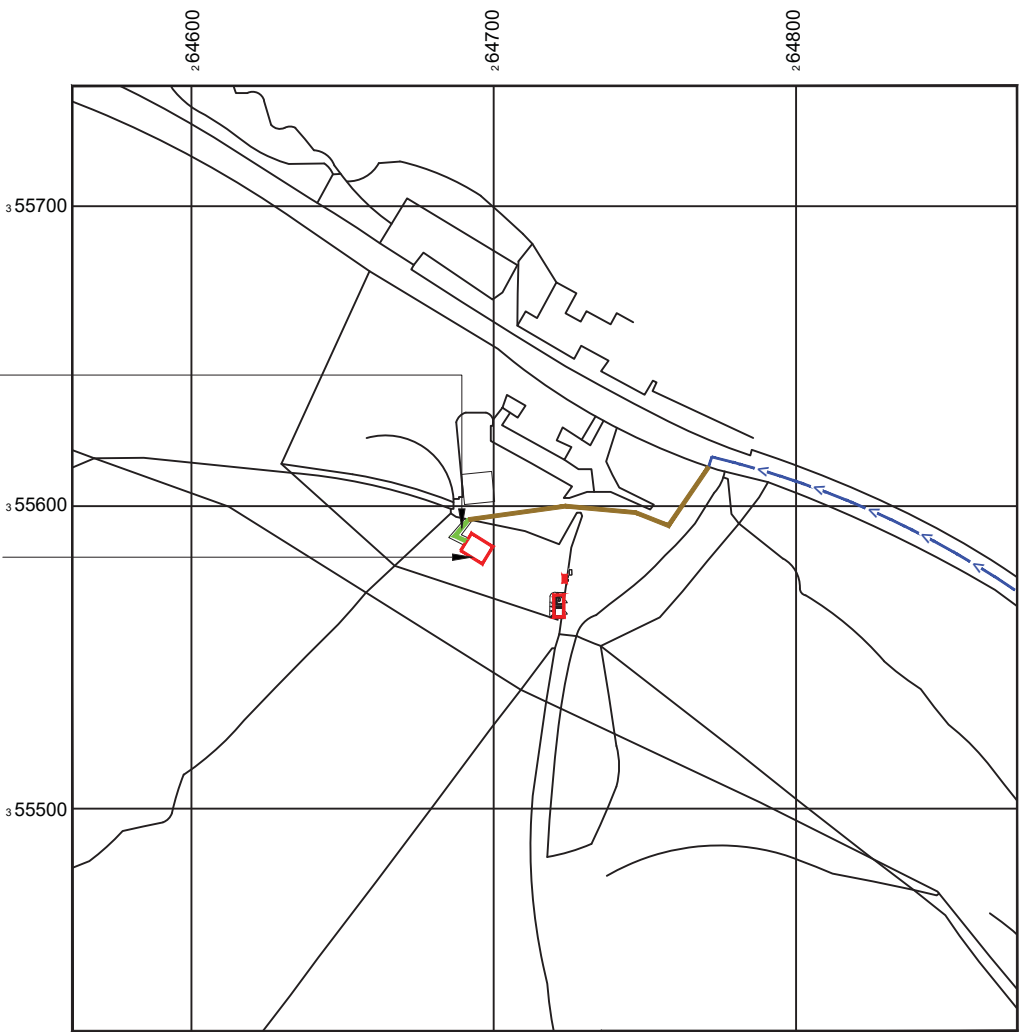


SITE PHOTOGRAPH



Proposed 46.09m² Access Area

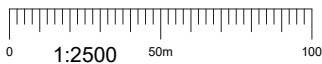
Proposed 8mx8m = 64.6m² Demise Area



Reproduced by permission of Ordnance Survey on behalf of the Controller of Her Majesty's Stationery Office
All rights reserved. © Crown Copyright licence no. 100047474

NGR E: 264696 N: 355585

SITE LOCATION PLAN



GOOGLE MAPS QR CODE

GOOGLE MAPS - <https://goo.gl/maps/Y5TSpK95inUg8CyV9>

GOOGLE STREET VIEW - <https://goo.gl/maps/qfDgK4cekw8UsNKY6>

What3Words - [goodnight.saloons.changes](https://www.what3words.com/?w3w=goodnight.saloons.changes)

NOTES:

1. ALL DIMENSIONS IN MM UNLESS OTHERWISE NOTED.

DIRECTIONS TO SITE:

From N Wales Expy/A55 to Conway Rd/A470 in Conwy Principal Area. Take exit 19 from N Wales Expy/A55, Head east on M53 0.7 mile, At junction 5, take the A41 exit to North Wales/Q/Ferry/Eastham 0.3 mile, At the roundabout, take the 3rd exit onto New Chester Rd/A41 0.6 mile, Slight right onto Welsh Rd/A550 4.6 mile, Use the right lane to merge with A494 via the ramp to North Wales/Queensferry/A550 5.1 mile, Continue onto N Wales Expy/A55 33.5 mile, At junction 19, take the A470 exit to Betws-y-Coed/Llandudno 0.3 mile, At Glan Conwy Interchange, take the 1st exit onto Conway Rd/A470 404 ft, At the roundabout, take the 3rd exit and stay on Conway Rd/A470 230 ft, Continue straight to stay on Conway Rd/A470 11.0 mile, Turn right onto B5106 0.4 mile, Turn left to stay on B5106 3.1 mile, Turn left to stay on B5106 180 ft, Turn right onto A5 5.2 mile, Turn left onto A4086 4.2 mile, Turn right to stay on A4086 1.0 mile, Turn left 89 ft, Turn right 180 ft, Destination will be on the left.

Demise:

Access Route To Site:

Existing Access Route:

Proposed Access Route:



Master:	MBNL / EE / H3G:	Project:	Purpose of Issue:	Issue:
M001	MBNL	EE EAS	Planning	F
Date:	30/03/2023	Revision / Upgrade Description:		
Drawn:	Naveen B	Seventh Issue: Comments Revised		
Checked:	Irfan			
Approved:	MITIE DA			
Master:	MBNL / EE / H3G:	Project:	Purpose of Issue:	Issue:
M001	MBNL	EE EAS	Planning	E1
Date:	23/01/2023	Revision / Upgrade Description:		
Drawn:	AMG	Sixth Issue: Comments Revised		
Checked:	ES			
Approved:	MITIE DA			
Master:	MBNL / EE / H3G:	Project:	Purpose of Issue:	Issue:
M001	MBNL	EE EAS	Planning	E
Date:	20/12/2022	Revision / Upgrade Description:		
Drawn:	AMG	Fifth Issue: Comments Revised		
Checked:	ES			
Approved:	MITIE DA			



Site Name: PEN Y PASS

EAS Site Reference: EAS1019

Address: PEN-Y-PASS
NANT GWYNANT
CAERNARFON
LL55 4NU

Title: 002A SITE LOCATION PLAN - A

Project: EE EAS

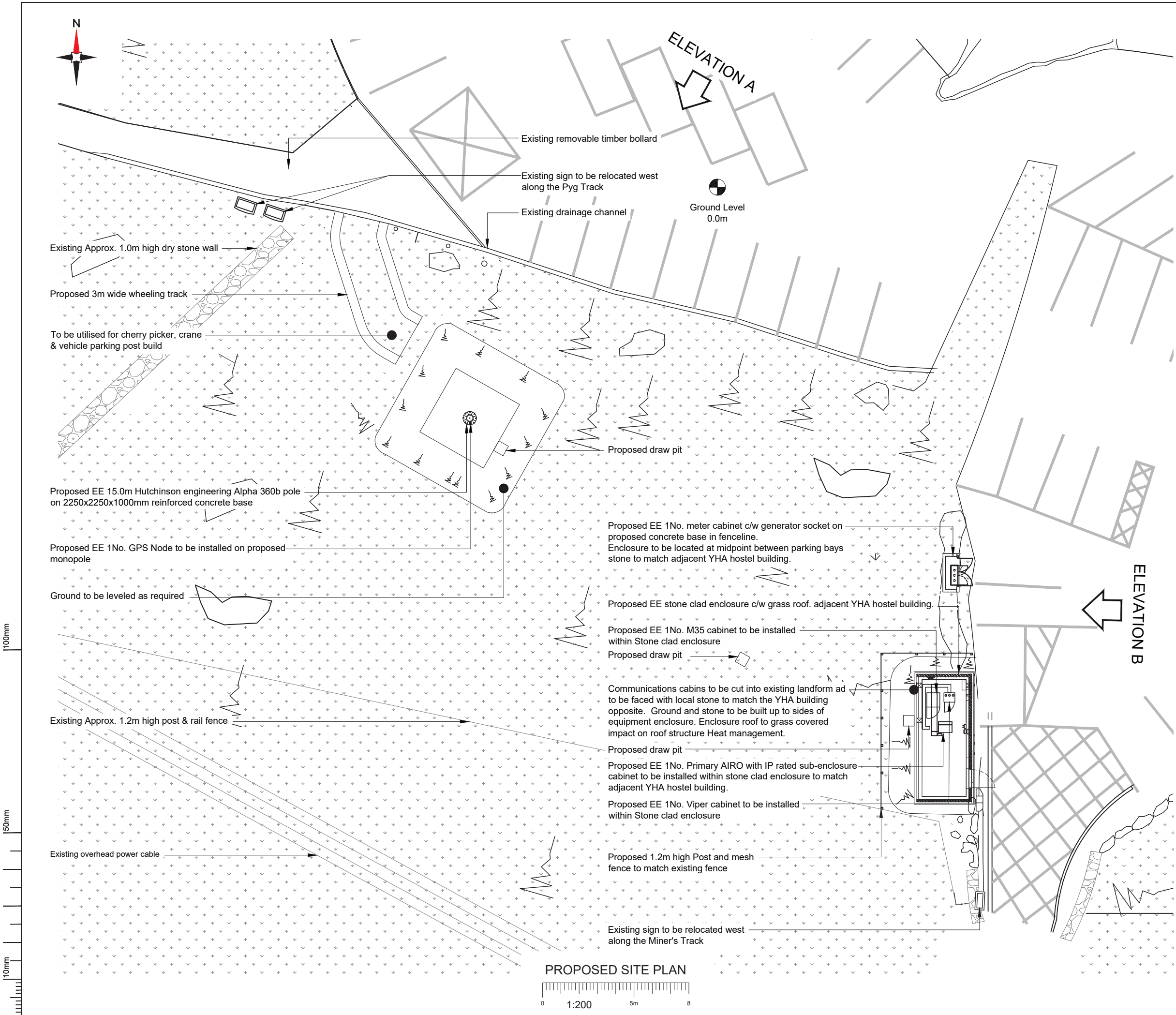
Purpose of Issue: GENERAL ARRANGEMENT

EE Site ID: 78823 SRN Site ID: SRN1019

Master Drawing No: EAS1019F_78823_SRN1019_M001 Issue: F

FIGURE 02


**Reproduction of Mitie Drawing No. EAS1019F_78823_SRN1019_M001
Issue G, showing proposed site plan and proposed site elevations.
Scale: as shown.**




NOTES:

1. ALL DIMENSIONS IN MM UNLESS OTHERWISE NOTED.

Master: M001		MBNL / EE / H3G:		Project: EE EAS		Purpose of Issue: Planning		Issue: G	
Date: 16/11/2023		Drawn: A. Marquez		Checked: Irfan		Approved: MITIE DA		Revision / Upgrade Description: Eighth Issue: Comments Revised	
Master: M001		MBNL / EE / H3G:		Project: EE EAS		Purpose of Issue: Planning		Issue: F	
Date: 31/05/2023		Drawn: Naveen B		Checked: Irfan		Approved: MITIE DA		Revision / Upgrade Description: Seventh Issue: Comments Revised	
Master: M001		MBNL / EE / H3G:		Project: EE EAS		Purpose of Issue: Planning		Issue: E1	
Date: 23/01/2023		Drawn: AMG		Checked: ES		Approved: MITIE DA		Revision / Upgrade Description: Sixth Issue: Comments Revised	



BEYOND LIMITS



Site Name:

PEN Y PASS

EAS Site Reference:

EAS1019

Address:

PEN-Y-PASS
NANT GWYNANT
CAERNARFON
LL55 4NU

Title:

200 PROPOSED SITE PLAN

Project:

EE EAS

Purpose of Issue:

GENERAL ARRANGEMENT

EE Site ID:

78823

SRN Site ID:

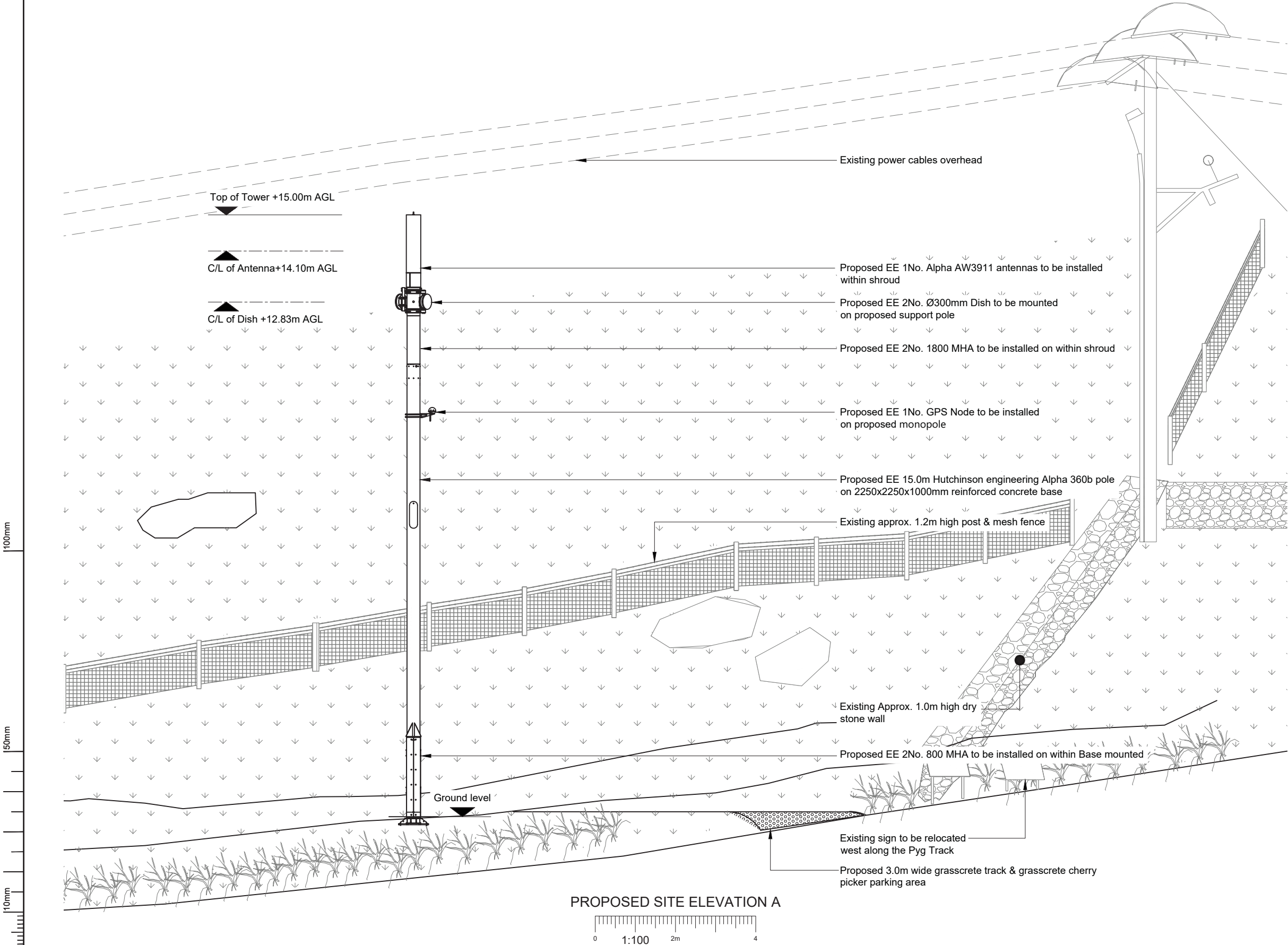
SRN1019

Master Drawing No:

EAS1019F_78823_SRN1019_M001


Issue:

G




NOTES:
1. ALL DIMENSIONS IN MM UNLESS OTHERWISE NOTED.

Master: M001	MBNL / EE / H3G:	Project: EE EAS	Purpose of Issue: Planning	Issue: G
Date: 16/11/2023	Drawn: A. Marquez	Revision / Upgrade Description: Eighth Issue: Comments Revised		
Checked: Irfan	Approved: MITIE DA			
Master: M001	MBNL / EE / H3G:	Project: EE EAS	Purpose of Issue: Planning	Issue: F
Date: 31/05/2023	Drawn: Naveen B	Revision / Upgrade Description: Seventh Issue: Comments Revised		
Checked: Irfan	Approved: MITIE DA			
Master: M001	MBNL / EE / H3G:	Project: EE EAS	Purpose of Issue: Planning	Issue: E1
Date: 23/01/2023	Drawn: AMG	Revision / Upgrade Description: Sixth Issue: Comments Revised		
Checked: ES	Approved: MITIE DA			

BT

BEYOND LIMITS



Site Name:
PEN Y PASS

EAS Site Reference:
EAS1019

Address:
PEN-Y-PASS
NANT GWYNANT
CAERNARFON
LL55 4NU

Title:
250 PROPOSED SITE ELEVATION A

Project:
EE EAS

Purpose of Issue:
GENERAL ARRANGEMENT

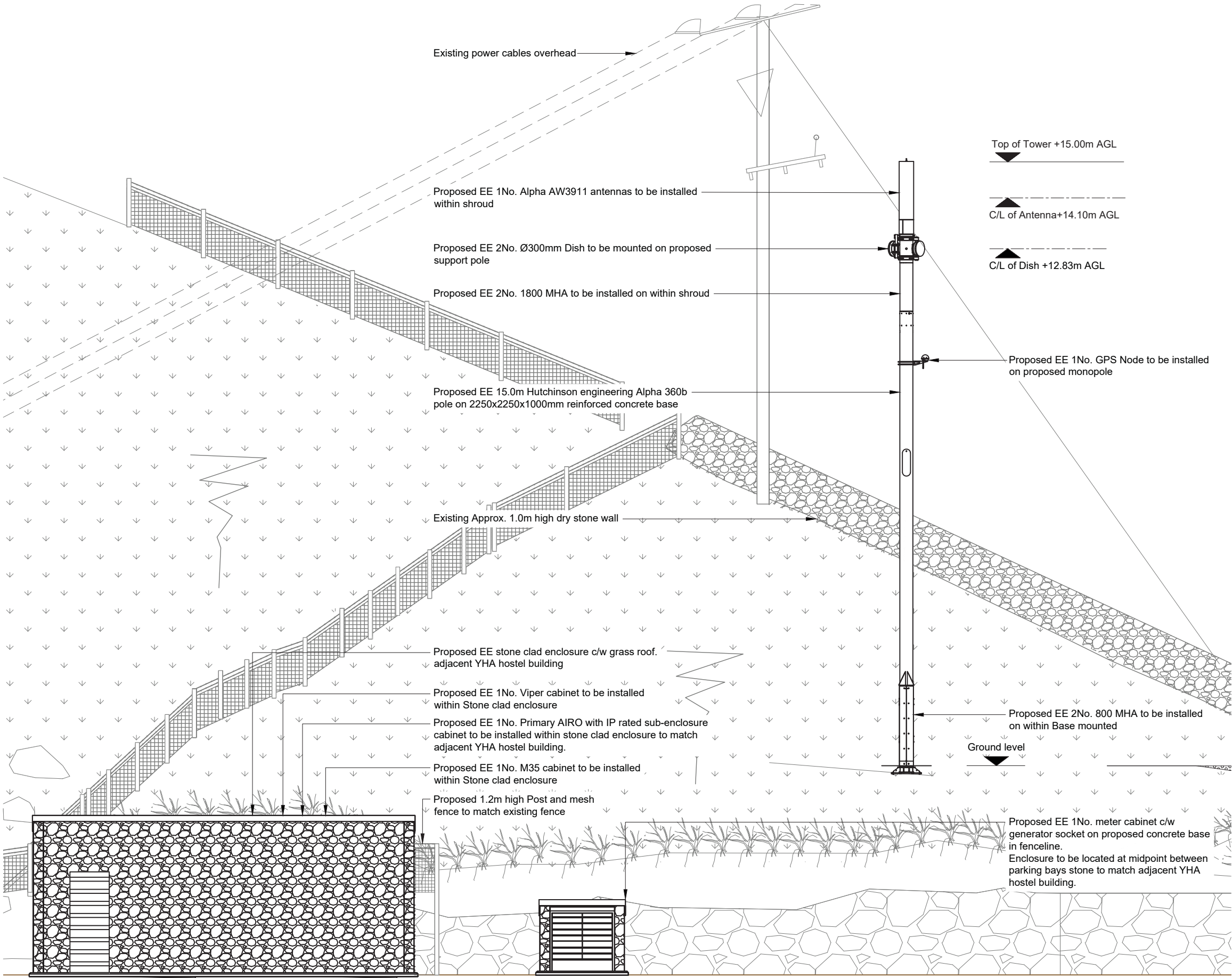
EE Site ID:
78823

SRN Site ID:
SRN1019

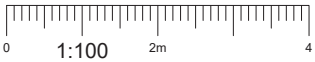
Master Drawing No:
EAS1019F_78823_SRN1019_M001

Issue:
G

100mm
50mm
10mm



PROPOSED SITE ELEVATION B



NOTES:
1. ALL DIMENSIONS IN MM UNLESS OTHERWISE NOTED.

Master:	MBNL / EE / H3G:	Project:	EE EAS	Purpose of Issue:	Issue:
M001	MBNL	EE EAS	Planning	G	
Date:	16/11/2023	Revision / Upgrade Description:			
Drawn:	A. Marquez	Eighth Issue: Comments Revised			
Checked:	Irfan				
Approved:	MITIE DA				
Master:	MBNL / EE / H3G:	Project:	EE EAS	Purpose of Issue:	Issue:
M001	MBNL	EE EAS	Planning	F	
Date:	31/05/2023	Revision / Upgrade Description:			
Drawn:	Naveen B	Seventh Issue: Comments Revised			
Checked:	Irfan				
Approved:	MITIE DA				
Master:	MBNL / EE / H3G:	Project:	EE EAS	Purpose of Issue:	Issue:
M001	MBNL	EE EAS	Planning	E1	
Date:	23/01/2023	Revision / Upgrade Description:			
Drawn:	AMG	Sixth Issue: Comments Revised			
Checked:	ES				
Approved:	MITIE DA				



Site Name:	PEN Y PASS			
EAS Site Reference:	EAS1019			
Address:	PEN-Y-PASS NANT GWYNANT CAERNARFON LL55 4NU			
Title:	251 PROPOSED SITE ELEVATION B			
Project:	EE EAS			
Purpose of Issue:	GENERAL ARRANGEMENT			
EE Site ID:	78823	SRN Site ID:	SRN1019	
Master Drawing No:	EAS1019F_78823_SRN1019_M001		Issue:	G



Plate 1: View of tower base pit showing topsoil and bedrock and length of pit; scale 1x3m; view from SE (archive reference: G2816_001).



Plate 2: View of tower base pit showing topsoil and bedrock showing width; scale 1x3m; view from S (archive reference: G2816_002).



Plate 3: View of tower base pit showing topsoil and bedrock showing depth; scale 1x3m; view from E (archive reference: G2816_003).



Plate 4: View of tower base pit showing topsoil and bedrock showing depth; scale 1x3m; view from SSE (archive reference: G2816_004).



Plate 5: View of tower base pit showing topsoil and bedrock showing depth; scale 1x3m; view from SSE (archive reference: G2816_005).



Plate 6: Location shot of working area; scale not used; view from SSE (archive reference: G2816_006).



Plate 7: Location shot showing site to SW of car park; scale not used; view from NE (archive reference: G2816_007).



Plate 8: Location shot of tower base pit and cable duct trench - view to the SE; scale not used; view from SE (archive reference: G2816_008).



Plate 9: Location shot showing site to SW of car park; scale not used; view from NW (archive reference: G2816_009).



Plate 10: View to NW (scenic shot); scale not used; view from WSW (archive reference: G2816_010).



Plate 11: View to SE (scenic shot); scale not used; view from SE (archive reference: G2816_011).



Plate 12: Excavated area at SE edge of car park close to Pyg and miner's tracks gates (for cabinets); scale 1x1m; view from NW (archive reference: G2816_012).



Plate 13: Excavated area at SE edge of car park close to Pyg and miner's tracks gates (for cabinets); scale 1x1m; view from SE (archive reference: G2816_013).



Plate 14: LocaGon shot showing gates to Pyg and miner's tracks; scale not used; view from NE (archive reference: G2816_014).



Plate 15: Closeup view of timber, metal and plastic in made ground/backfill; scale not used; view from N/A (archive reference: G2816_015).



Plate 16: View of excavated area; scale 1x1m; view from S (archive reference: G2816_016).



Plate 17: View of excavated area for cabinets showing depth of soil, fence post and bedrock in section; scale 1x1m; view from ESE (archive reference: G2816_017).



Plate 18: View along partially excavated cable duct trench; scale not used; view from ESE (archive reference: G2816_018).



Plate 19: View along partially excavated cable duct trench; scale not used; view from SE (archive reference: G2816_019).



Plate 20: View of W side of cable trench with topsoil removed; scale not used; view from ESE (archive reference: G2816_020).



Plate 21: View of excavated pit for tower base and cable duct trench; scale not used; view from SW (archive reference: G2816_021).



Plate 22: View of excavated pit for tower base and cable duct trench; scale not used; view from NW (archive reference: G2816_022).



Plate 23: View of spoil heap - mostly topsoil; scale not used; view from N/A (archive reference: G2816_023).



Plate 24: View of spoil heap - more clayey stony subsoil and rock; scale not used; view from N/A (archive reference: G2816_024).



Plate 25: View along unexcavated cable duct trench with topsoil removed; scale not used; view from SW (archive reference: G2816_025).

APPENDIX I

Reproduction of Heneb: Gwynedd Archaeology approved Written Scheme of Investigation, July 2024.

PEN Y PASS CAR PARK, NANT GWYNANT (G2816)

WRITTEN SCHEME OF INVESTIGATION FOR AN ARCHAEOLOGICAL WATCHING BRIEF

Prepared for

GILLAN CONSULTING

December 2023



Ymddiriedolaeth Archaeolegol Gwynedd
Gwynedd Archaeological Trust

All GAT staff should sign their copy to confirm the project specification is read and understood and retain a copy of the specification for the duration of their involvement with the project. On completion, the specification should be retained with the project archive:

Name

Signature

Date

PEN Y PASS CAR PARK, NANT GWYNANT (G2816)

WRITTEN SCHEME OF INVESTIGATION FOR AN ARCAHEOLOGICAL WATCHING BRIEF

Prepared for *Gillan Consulting*, December 2023

1	INTRODUCTION.....	6
1.1	Aims and Objectives.....	7
1.2	Monitoring Arrangements	8
1.3	Historic Environment Record.....	9
2	ARCHAEOLOGICAL AND HISTORICAL BAKCGROUND	10
2.1	Historic Background	10
2.2	Historic Mapping.....	11
3	METHOD STATEMENT	12
3.1	Introduction.....	12
3.2	Watching Brief	14
3.2.1	Fieldwork Methodology	14
3.2.2	Human Remains	16
3.2.3	Ecofacts	17
3.2.4	Artefacts.....	18
3.3	Working Project Archive	20
3.4	Selection Strategy & Data Management Plan	21
3.5	Reporting	22
3.6	Dissemination & Archiving.....	23
4	PERSONNEL	24
5	HEALTH AND SAFETY	25
6	SOCIAL MEDIA.....	26
7	INSURANCE	27
7.1	Public/Products Liability.....	27
7.2	Employers Liability.....	27
7.3	Professional Indemnity	27
8	SOURCES CONSULTED	28
	FIGURE 01	29
	Reproduction of Mitie Drawing No. EAS1019F_78823_SRN1019_M001 Issue F, showing site location. Scale: as shown.....	29
	FIGURE 02	30
	Reproduction of Mitie Drawing No. EAS1019F_78823_SRN1019_M001 Issue G, showing proposed site plan and proposed site elevations. Scale: as shown.	30

FIGURE 03	31
Location of proximity archaeological assets. Based on Ordnance Survey 1:10000 County Series Map. Scale 1:2500@A4. © Crown copyright and database rights 2023 OS 100020577. Contains National Statistics data © Crown copyright and database right 2023.	
FIGURE 04	32
Reproduction of First Edition Ordnance Survey 1-inch to 6-inch Caernarvonshire County Series Map Sheet XX.NE. Published 1891. Scale 1:5000@A4.....	
FIGURE 05	33
Reproduction of Second Edition Ordnance Survey 1-inch to 6-inch Caernarvonshire County Series Map Sheet XX.NE. Published 1901. Scale 1:5000@A4.....	
FIGURE 06	34
Reproduction of Third Edition Ordnance Survey 1-inch to 6-inch Caernarvonshire County Series Map Sheet XX.NE. Published 1920. Scale 1:5000@A4.....	
FIGURE 07	35
Reproduction of Fourth Edition Ordnance Survey 1-inch to 6-inch Caernarvonshire County Series Map Sheet XX.NE. Published 1953. Scale 1:5000@A4.....	
APPENDIX I.....	36
Gwynedd Archaeological Watching Brief Pro-Forma	
APPENDIX II.....	37
Gwynedd Archaeological Trust Photographic Metadata Pro-Forma	
APPENDIX III.....	38
Gwynedd Archaeological Trust Selection Strategy & Digital Management Plan	

1 INTRODUCTION

Gwynedd Archaeological Trust (GAT) has been commissioned by *Gillan Consulting* to undertake an archaeological watching brief during the installation of a 15m high monopole telecoms mast with associated antennas, ground-based apparatus and ancillary infrastructure at Pen y Pass Car Park, Nant Gwynant. LL55 4NU (NGR SH64725562; cf. [Figure 01](#)). The site is located southeast of Llanberis, with the Pyg and Miner's Tracks leading up the mountain commencing at the car park edge. The works are scheduled from January 2024 under planning reference NP2/11/52L, with the watching brief required under Conditions 7 and 8.

The watching brief will be planned, managed and undertaken by GAT in accordance with the following standards and guidance:

- Guidance for the Submission of Data to the Welsh Historic Environment Records (HERs) Version 2 (The Welsh Archaeological Trusts, 2022);
- Guidelines for digital archives (Royal Commission on Ancient and Historic Monuments of Wales, 2015).
- Management of Archaeological Projects (English Heritage, 1991);
- Management of Research Projects in the Historic Environment: The MoRPHE Project Managers' Guide (Historic England, 2015);
- Standard and Guidance for Archaeological Watching Brief (Chartered Institute for Archaeologists, 2020);
- Standard and Guidance for the Collection, Documentation, Conservation and Research of Archaeological Materials (Chartered Institute for Archaeologists, 2020).

Gwynedd Archaeological Trust is certified to ISO 9001:2015 and ISO 14001:2015 (Cert. No. 74180/A/0001/UK/En) and a Registered Organisation with the Chartered Institute for Archaeologists (CIfA).

1.1 Aims and Objectives

The key aims and objectives are to:

- Establish the date and nature of any archaeological remains identified during the watching brief and assess their implications for understanding the historical development of the monitored area. The watching brief is located within an area of known prehistoric and early medieval activity;
- to place the results in context (if applicable), with reference made to *A Research Framework for the Archaeology of Wales Version 03, Final Refresh Document* (March 2017), and,
- if no additional archaeological activity is identified, establish why this may be the case.

1.2 Monitoring Arrangements

The archaeological mitigation will be monitored by the Gwynedd Archaeological Planning Service (GAPS); both the written scheme of investigation and all subsequent reporting must be approved by GAPS before final issue. GAPS contact details are:

- Tom Fildes | tom.fildes@heneb.co.uk | 07920264232.

1.3 Historic Environment Record

In line with the Historic Environment Record (HER) requirements, the HER will be contacted at the onset of the project to ensure that any data arising is formatted in a manner suitable for accession to the HER and follows the guidance set out in *Guidance for the Submission of Data to the Welsh Historic Environment Records (HERs)* (The Welsh Archaeological Trusts, 2022). In line with this guidance, all submitted reporting will need to include the equivalent of a non-technical summary in Welsh and English at the front of the report combined with short bilingual summaries of the principal Historic Assets recorded during the event. These requirements are mandatory.

The HER enquiry number for this project is GATHER1967 and the Event Primary Reference Number is 46732.

2 ARCHAEOLOGICAL AND HISTORICAL BACKGROUND

2.1 Historic Background

The site falls within the Registered Historic Landscape of Dinorwig (ref. HLW (Gw) 6) and the Historic Landscape Character area of Unenclosed Mountain (North Carneddau). There are known prehistoric and early medieval archaeological assets in proximity to the site and the regional Historic Environment Record records three Primary Reference Numbers (PRNs) at the location of the existing car park:

- PRN 6118 (NGR SH64765559): Described in the regional HER as the site of a Bronze Age cairn that was partly robbed when the Gorphwysfa Hotel was built. It was marked on the 1st ed. 6 inch map and its position is that now occupied by the Pen-y-pass car park, so must have been flattened. There are no records of any finds from this cairn;
- PRN 6119 (NGR SH64705560): Described in the regional HER as the site of seven or eight early medieval long cist graves that are said to have been destroyed when the road was built below Gorphwysfa on the Llanberis side. The location is a saddle between the rising ground of Snowdon on the southwest and the Glyderau on the north;
- PRN 29606 (NGR SH64755565): Listed in the regional HER as a post-medieval copper trial mine. Destroyed when Gorphwysfa Hotel was built cist in which were found a piece of flint and a probable incense cup. Mentioned by Llwyd as being covered in white quartz.
- PRN 98892 (NGR SH64735563): Listed in the regional HER as the site of wartime roadblock "Pen y Pass", listed in wartime document held at Caernarfon Archives, (ref.: XC12/2/34) and
- PRN20799 (NGR SH64705560): Listed in the regional HER as a post-medieval copper trial mine.

This demonstrates there is potential for activity in the area. The A4086 road close to the car park is the postulated route Roman Roads PRN 17811 and PRN17824) leading to Pen-y-Gwryd marching camp (PRN 1479) c.1km to the east, suggesting there is also potential for activity from this period.

2.2 Historic Mapping

The 1st, 2nd, 3rd and 4th edition Ordnance Survey 6-inch to 1-mile Caernarvonshire County Series Ordnance Survey maps (Sheet XX.NE, published 1891, 1901, 1920 and 1953 respectively; cf. Figures 04, 05, 06 and 07), all show the Gorphwysfa Hotel (now part of the Youth Hostel Association) established alongside the road. On the opposite side of the road is a trapezoidal area with several small outbuildings alongside the road. There are no significant changes between the map editions, with the trapezoidal area subsequently expanded into a larger car park during the twentieth century. On all four editions of the six-inch map the site of the Bronze Age cairn (PRN 6118; NGR SH64765559) is listed as *Carnedd*.

3 METHOD STATEMENT

3.1 Introduction

An archaeological watching brief is defined by the Chartered Institute for Archaeologists as a formal programme of observation and investigation conducted during any operation carried out for non-archaeological reasons where there is a possibility that archaeological deposits may be disturbed or destroyed. The programme will result in the preparation of a report and ordered archive (CIfA, 2020).

The watching brief will monitor the installation of a 15m high monopole telecoms mast with associated antennas, ground-based apparatus and ancillary infrastructure at Pen y Pass Car Park, Nant Gwynant. LL55 4NU (NGR SH64725562; cf. [Figure 01](#)). I

GAPS have requested a watching brief on an *intensive basis covering all ground-disturbing works, including but not limited to footings, access, and landscaping*. GAPS have also stated that sufficient desk-based evidence should be provided as part of the wider report to support the results; in support of this, the following resources will be consulted:

1. The regional Historic Environment Register (HER) Gwynedd Archaeological Trust, Craig Beuno, Ffordd y Garth, Bangor, Gwynedd LL57 2RT) will be examined for information concerning the area. Examination of the core HER will be undertaken, including the 6-inch to 1-mile County Series Ordnance Survey maps (Caernarvonshire County Series Map Sheet Caernarvonshire County Series Ordnance Survey maps (Sheet XX.NE, published 1891, 1901, 1920 and 1953) and secondary sources.
2. The National Monuments Record of Wales (Royal Commission on the Ancient and Historical Monuments of Wales, Plas Crug, Aberystwyth SY23 1NJ) and the online catalogue of the National Library of Wales (Penglais Rd, Aberystwyth SY23 3BU) will be examined checked for any sites additional to the HER;
3. Aerial photographs from the National Monuments Record of Wales (Royal Commission on the Ancient and Historical Monuments of Wales, National Monuments Record of Wales, Plas Crug, Aberystwyth SY23 1NJ) will be examined for potential features. This will include 1940s RAF and later vertical aerial photographs;
4. Archive data, including primary and secondary sources, historic maps and estate maps will be examined at the regional archives, if open and accessible. Archive data will include historic mapping such as the 1840 Beddgelert Parish Tithe map and schedule; and

5. Light Detection and Ranging (LiDAR) data will be examined from *DataMap Wales* at <https://datamap.gov.wales/maps/lidar-viewer/> for information on potential surface features using 1m digital terrain modelling for area SH6455.

3.2 Watching Brief

3.2.1 Fieldwork Methodology

- The watching brief will monitor groundworks as far as the works limit of excavation, the archaeological horizon or the glacial horizon, whichever is encountered first. *The project archaeologist will be afforded sufficient time and opportunity to investigate any archaeological activity, or suspected archaeological activity, encountered;*
- All attendances and photographs will be recorded using GAT pro-formas (cf. [Appendices I](#) and [II](#)). The records will include stratigraphic depths and composition. The size and location of each trial pit will be recorded;
- Any encountered subsurface features will be recorded on GAT pro-formas with detailed notations and will be recorded photographically with an appropriate scale and a hand drawn measured survey completed;
- Photographic images will be taken using a digital SLR camera set to maximum resolution in RAW format; a photographic record will be maintained on site using GAT pro-formas and digitised in *Microsoft Access* as part of the fieldwork archive and dissemination process. Photographic images will be archived in TIFF format using Nikon NX Studio; the archive numbering system will start from G2816_001. A photographic ID board will be used to record site code, image orientation and any relevant context numbers; scale bars of appropriate size and quantity will be used, both for general images and for individual features/feature groups.
- Any archaeological features/deposits/structures encountered will be manually cleaned and examined to determine extent, function, date and relationship to adjacent activity. The following excavation strategy will generally apply: 50% sample of each sub-circular feature, 25% sample of each linear feature (terminal ends and intersection points with other features will be prioritised). However, if discrete features are identified, these will be 100% excavated. Any features that comprise a spread of material rather than a cut feature, will be completed in quadrants (if fully extant) or 100% excavated if present as a discrete spread;
- Any required sections and plans to be drawn at a minimum 1:10 scale using GAT A4, A3 or A2 pro-forma permatrace (whichever is appropriate to the size/scale of the drawing); section datums will be recorded.

Should dateable artefacts, human remains and/or ecofacts be recovered, a post-excavation assessment will be prepared as the initial fieldwork report (MAP2 Phase 3),

leading to an Updated Project Design (UPD) for analysis and final reporting (MAP2 Phase 4). Alternatively, depending on quantity and extent of the artefacts and ecofacts, a post-excavation statement will be prepared, followed by MAP2 Phase 4. Additional time, resourcing and costs will be required to undertake any post-excavation programme of works.

3.2.2 Human Remains

Whilst human remains are not expected, if any human remains are identified that cannot be preserved in situ, any excavation will take place under appropriate regulations and with due regard for health and safety issues. In order to excavate human remains, a Ministry of Justice licence is required under Section 25 of the Burials Act 1857 for the removal of any body or remains of any body from any place of burial. In accordance with the Ministry of Justice licence, recovered remains will be reburied once the investigation and/or assessment/analysis are complete.

Non-fragmented skeletal remains will be excavated using wooden tools and collected and stored in polyethylene bags (with appropriate references for context, grave number, et al) and placed in a lidded cardboard archive box (note: separate boxes for each grave) and stored in a suitable manner within GAT premises. If significant quantities of human remains are encountered, a human osteologist should be contacted and appointed to advise the team during the fieldwork. The osteologist will be an external appointment: Dr. Genevieve Tellier | Tel: 01286 238827 | email: northwalesosteology@outlook.com who will assist in devising the excavation, recording and sampling strategy for features containing human remains. The osteologist should also help to ensure that adequate post-excavation processing of human remains is carried out so that the material is in a fit state for assessment during the post-excavation stage. For inhumations, this will involve washing, drying, marking and packing.

If human remains are recovered that are deemed suitable for further assessment/analysis, this will be completed in accordance with the osteologist's requirements and with *Human Bones from Archaeological Sites Guidelines for producing assessment documents and analytical reports* (Chartered Institute for Archaeologists, 2017).

If human remains are recovered that are deemed suitable for further assessment/analysis, this will be completed in accordance with the osteologist's requirements and with *The Role of the Human Osteologist in an Archaeological Fieldwork Project* (Historic England, 2022).

3.2.3 *Ecofacts*

Should any archaeological features and/or sealed deposits be identified that are deemed suitable for assessment and analysis, bulk ecofact samples will be taken by the GAT Project Archaeologist team using 10 litre sampling buckets. The deposits will be assessed and analysed for plant species and charcoal, with the results used to inform agrarian practices and wood fuel use, as well as possibly dating. Initial assessment would be completed by the GAT Project Archaeologist team using wet sieving, with the subsequent species identification assessment completed by an ecofact specialist (Jackaline Robertson | AOC Archaeology | telephone: 0208 843 7380). Any deposits deemed suitable for dating will be submitted to a laboratory specialising in radiocarbon dating (e.g., SUERC).

Any ecofact assessment/analysis proposals will require additional resourcing and cost and will only be undertaken further to agreement with GAPS and the client.

Any ecofact samples taken from human burials will be recovered in accordance with the appointed osteologist's guidance.

3.2.4 Artefacts

Diagnostic artefacts will be retained for further examination and identification. Pottery sherds of 19th and 20th century date will be examined on site and the context from which they were retrieved noted but the sherds will not be retained. The artefacts will be treated according to guidelines issued by the UK Institute of Conservation (Watkinson and Neal 2001) in particular the advice provided within *First Aid for Finds* (Rescue 1999) and Historic England.

Any waterlogged artefacts (e.g. wood or leather) that are to be recovered for post-excavation assessment and analysis will be processed in accordance with *Environmental Archaeology: a guide to the theory and practice of methods, from sampling and recovery to post-excavation* (English Heritage, 2011) and specifically in accordance with Brunning and Watson (2010) for waterlogged wood and Historic England (2012) for waterlogged leather. In such cases an external specialist will be contacted to agree an appropriate sampling and recovery strategy via Lucy Whittingham | Project Manager (post-excavation) | AOC Archaeology | telephone: 0208 843 7380 | email: lucy.whittingham@aocarchaeology.com).

Any artefact assessment/analysis will require additional resourcing and cost.

All finds are the property of the landowner; however, it is Trust policy to recommend that all finds are donated to an appropriate museum (in this case Storiell, Ffordd Gwynedd, Bangor, Gwynedd LL57 1DT), where they can receive specialist treatment and study. Access to finds must be granted to the Trust for a reasonable period to allow for analysis and for study and publication as necessary. Trust staff will undertake initial identification, but any additional advice would be sought from a wide range of consultants used by the Trust, including National Museums and Galleries of Wales at Cardiff.

All finds of treasure must be reported to the coroner for the district within fourteen days of discovery or identification of the items. Items declared Treasure Trove become the property of the Crown, on whose behalf the Portable Antiquities Scheme acts as advisor on technical matters and may be the recipient body for the objects.

The Treasure Valuation Committee, based at the British Museum, and informed by the Portable Antiquities Scheme, will decide whether they or any other museum may wish to acquire the object. If no museum wishes to acquire the object, then the Secretary of State will be able to disclaim it. When this happens, the coroner will notify the occupier and landowner that he intends to return the object to the finder after 28 days unless he receives no objection. If the coroner receives an objection, the find will be retained until the dispute has been settled.

GAT will contact the landowner (via client) for agreement regarding the transfer of artefacts, initially to GAT and subsequently to the relevant museum (Storiel). A GAT produced pro-forma will be issued to the landowner where they are given the option to donate the finds or to record that they want them returning to them once analysis and assessment has been completed. Artefacts will be transferred to the Storiel in accordance with their guidelines.

3.3 Working Project Archive

Following the completion of the photographic survey and watching brief, a working project archive will be created based on following task list;

1. Pro-formas: all cross referenced and complete;
2. Photographic Metadata: completed in *Microsoft Access* and cross-referenced with all pro-formas;
3. Survey data: downloaded using a Computer Aided Design package;
4. Sections (if relevant): all cross referenced and complete;
5. Plans (if relevant): all cross referenced and complete;
6. Artefacts (if relevant): quantified and identified; register completed;
7. Ecofacts (if relevant): quantified and register completed;
8. Context register (if relevant): quantified and register completed.

All relevant site archive data will be added to a digital project register specific to this project, which will be prepared in *Microsoft Excel*.

The site archive data will then be processed, final illustrations will be compiled and a report will be produced which will detail and synthesise the results.

3.4 Selection Strategy & Data Management Plan

As stated in *Standard and guidance for the creation, compilation, transfer and deposition of archaeological archives* (Chartered Institute for Archaeologists, 2020), para. 3.3.1, “Project specifications, research designs or similar documents should include a project- specific Selection Strategy and a Data Management Plan. The Chartered Institute for Archaeologists states that “(I)t is widely accepted that not all the records and materials collected or created during the course of an Archaeological Project require preservation in perpetuity. These records and materials constitute the Working Project Archive which will be subject to Selection, in order to establish what will be retained for long-term curation” (<https://www.archaeologists.net/selection-toolkit>). The working project archive in this instance will comprise digital data including photographic data, documentation and written data, as well as paper records, including project pro-formas. The Data Management Plan will be stored on a project specific form in the GAT project database (format: *Microsoft Access*) and the Selection Strategy and both will be based on a GAT pro-forma (cf. [Appendix III](#)) that will be updated and appended to the final report.

This working project archive data will be processed as follows:

1. Pro-formas: all cross referenced and scanned for digital archiving;
2. Photographic Metadata: cross-referenced with all pro-formas and completed in *Microsoft Excel*;

Information from these will be used to compile the project report. The physical archive will be stored in a designated project folder and the location confirmed in the Data Management Plan; the digital dataset will be stored on a dedicated Trust server, with the location confirmed in the Data Management Plan via a specific hyperlink. External datasets for the HER and RCAHMW are as defined in the dissemination strategy below.

3.5 Reporting

The project report will include the following:

1. Front cover;
2. Inner cover;
3. Figures and Plates List;
4. Non-technical summary (Welsh/English);
5. Introduction;
6. Methodology;
7. Results;
8. Conclusion
9. Bibliography;
10. Figures; inc.:
 - location plan;
 - sections and plans of recorded archaeological activity (if applicable)
11. Plates; inc.
 - Illustrative examples from the Watching Brief
12. Appendix I (approved specification);
13. Appendix II (Photographic metadata);
14. Appendix III (Selection Strategy and Digital Management Plan – Final Versions)
15. Back cover.

3.6 Dissemination & Archiving

The following dissemination and archiving of the report and digital dataset will be applied:

- A digital report will be provided to *Gillan Consulting* and Gwynedd Archaeological Planning Service (draft report then final report);
- A digital report will be provided to the regional Historic Environment Record; this will be submitted within six months of project completion, along with a digital dataset comprising an Event PRN summary. The report and dataset will be submitted in accordance with the required standards set out in *Guidance for the Submission of Data to the Welsh Historic Environment Records (HERs)* (Version 2); and
- A digital report and digital archive dataset will be provided to Royal Commission on Ancient and Historic Monuments, Wales (final report only), in accordance with the *RCAHMW Guidelines for Digital Archives Version 1*. The dataset will be prepared in the format required by RCAHMW and will include:
 - Photographic metadata (Microsoft Access);
 - Photographic archive (TIFF format);
 - Project Information form (Excel);
 - File Information form (Excel) – Microsoft Word report text final;
 - File Information form (Excel) – Photographic metadata (general);
 - File Information form (Excel) – Adobe PDF report final; and
 - File Information form (Excel) - Photographic metadata (detail).

4 PERSONNEL

The project will be managed by John Roberts, Principal Archaeologist GAT Contracts Section and undertaken by a Project Archaeologist. The Project Archaeologist will be responsible for the completion of all on site pro-formas and the photographic archive, as well as for submitting a draft final report for project manager review and approval. The report will then be submitted as per the arrangements defined above.

5 HEALTH AND SAFETY

A site-specific risk assessment will be prepared and will be reviewed by the GAT Project Archaeologist in advance of works, with any additional risks identified on site highlighted in the dynamic risks section and appropriate mitigation undertaken. The GAT attendee will be issued with required personal safety equipment, including high visibility jacket, steel toe-capped boots and safety helmet. All site work will be managed and undertaken in accordance with the GAT Health & Safety Policy.

6 SOCIAL MEDIA

One of the key aims in the GAT mission statement is to improve the understanding, conservation and promotion of the historic environment in our area and inform and educate the wider public. To help achieve this, GAT maintains an active social media presence and seeks all opportunities to promote our projects and results. With permission, GAT would like the opportunity to promote our work on this scheme through our social media platforms. This could include social media postings during our attendance on site as well as any postings to highlight results. In all instances, approval will be sought from client prior to any postings.

7 INSURANCE

7.1 Public/Products Liability

Limit of Indemnity- £5,000,000 any one event in respect of Public Liability INSURER Ecclesiastical Insurance Office Plc.

Policy Type Public Liability

Policy Number 000375 Expiry Date 22/08/2024

7.2 Employers Liability

Limit Of Indemnity- £10,000,000 Any One Occurrence. Insurer Ecclesiastical Insurance Office Plc.

Policy Type Public Liability

Policy Number 000375 Expiry Date 22/08/2024

7.3 Professional Indemnity

Limit Of Indemnity- £5,000,000 In Respect Of Each And Every Claim Insurer AXA Insurance UK Plc

Policy Type Professional Indemnity

Policy Number Tg0275

Expiry Date 22/08/2024

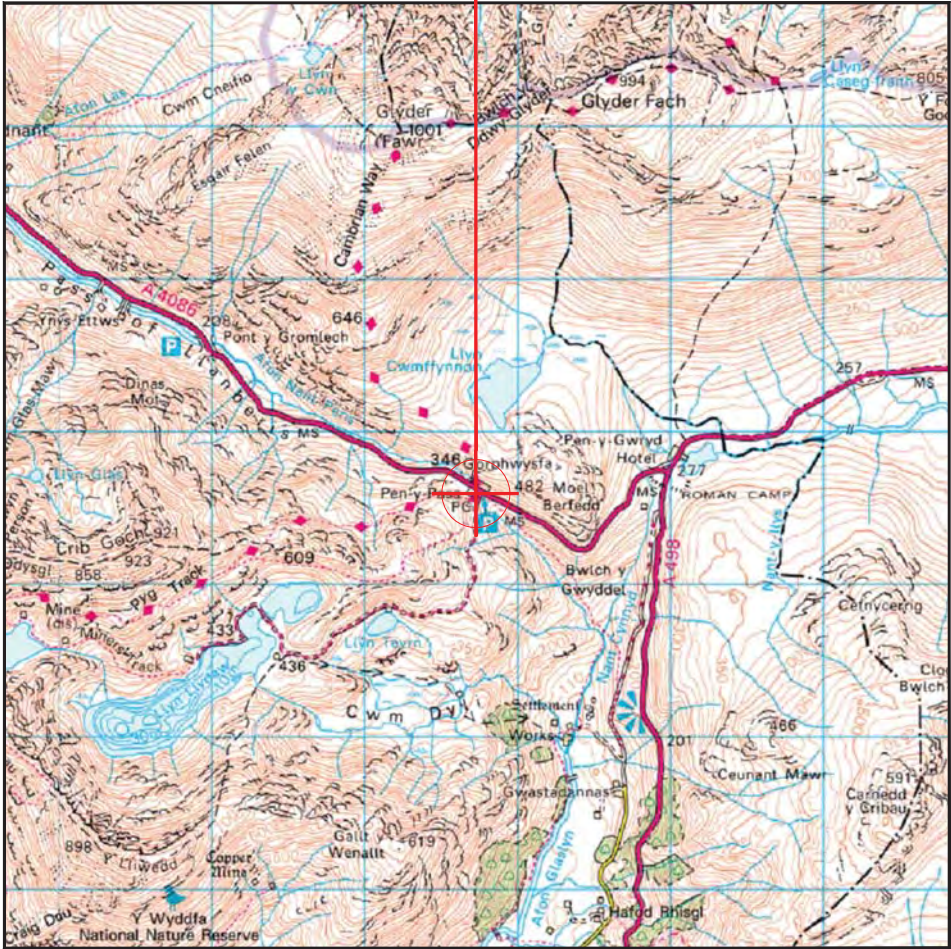
8 SOURCES CONSULTED

1. Chartered Institute for Archaeologists, 2020, Standard and guidance for the collection, Documentation, Conservation and Research of Archaeological Materials
2. Chartered Institute for Archaeologists, 2020. Standard and Guidance for Archaeological Watching Brief
3. English Heritage, 1991, Management of Archaeological Projects (MAP2)
4. Historic England, 2015, Management of Research Projects in the Historic Environment (MoRPHE)
5. Royal Commission on Ancient and Historic Monuments of Wales, 2015, Guidelines for digital archives
6. The Welsh Archaeological Trusts, 2022. *Guidance for the Submission of Data to the Welsh Historic Environment Records (HERs)* Version 2.

FIGURE 01

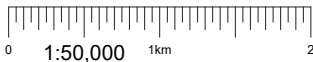
**Reproduction of Mitie Drawing No. EAS1019F_78823_SRN1019_M001
Issue F, showing site location. Scale: as shown.**

SITE LOCATION



Reproduced by permission of Ordnance Survey on behalf of the Controller of Her Majesty's Stationery Office
All rights reserved. © Crown Copyright licence no. 100047474

SITE AREA PLAN

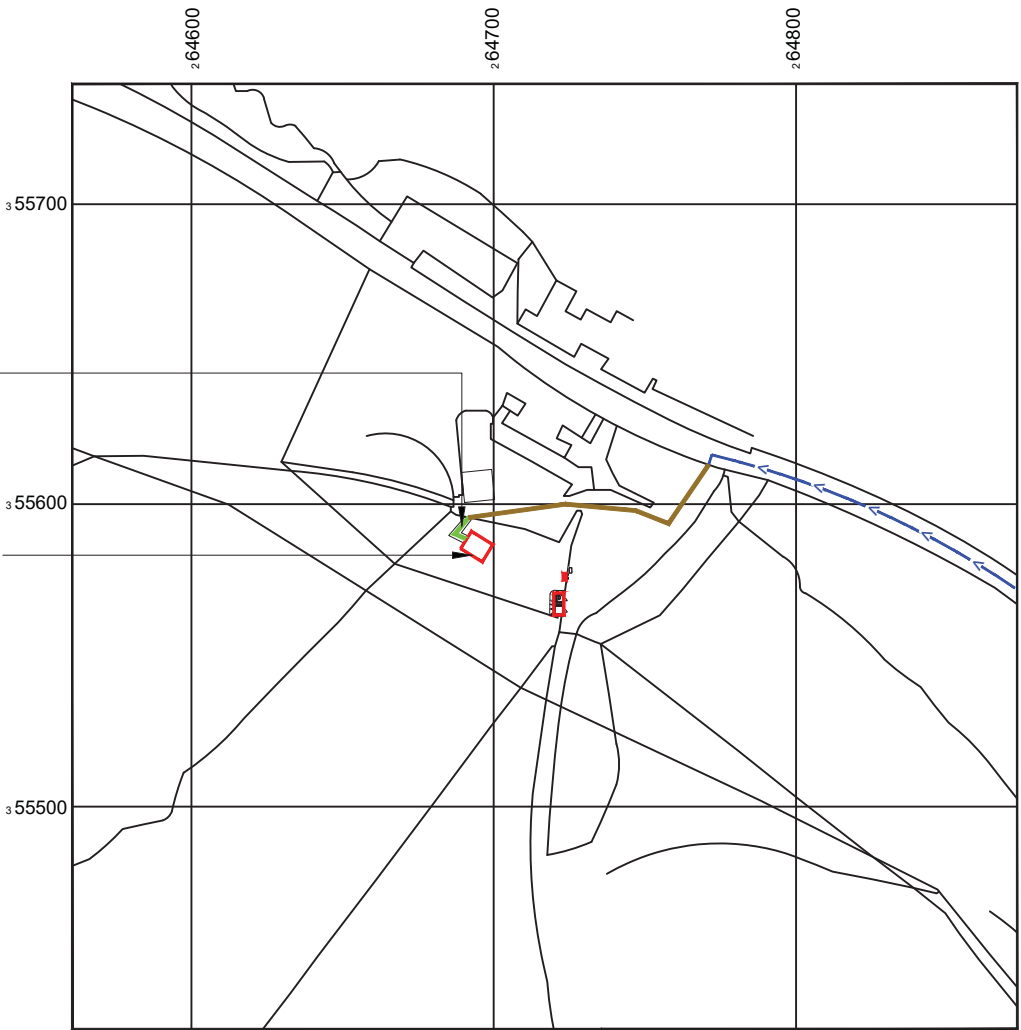


SITE PHOTOGRAPH



Proposed 46.09m² Access Area

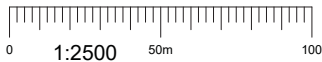
Proposed 8mx8m = 64.6m² Demise Area



Reproduced by permission of Ordnance Survey on behalf of the Controller of Her Majesty's Stationery Office
All rights reserved. © Crown Copyright licence no. 100047474

NGR E: 264696 N: 355585

SITE LOCATION PLAN



GOOGLE MAPS QR CODE

GOOGLE MAPS - <https://goo.gl/maps/Y5TSpK95inUg8CyV9>

GOOGLE STREET VIEW - <https://goo.gl/maps/qfDgK4cekw8UsNKY6>

What3Words-///goodnight.saloons.changes

NOTES:

1. ALL DIMENSIONS IN MM UNLESS OTHERWISE NOTED.

DIRECTIONS TO SITE:

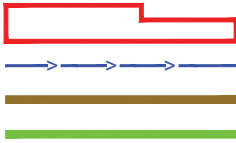
From N Wales Expy/A55 to Conway Rd/A470 in Conwy Principal Area. Take exit 19 from N Wales Expy/A55, Head east on M53 0.7 mile, At junction 5, take the A41 exit to North Wales/Q/Ferry/Eastham 0.3 mile, At the roundabout, take the 3rd exit onto New Chester Rd/A41 0.6 mile, Slight right onto Welsh Rd/A550 4.6 mile, Use the right lane to merge with A494 via the ramp to North Wales/Queensferry/A550 5.1 mile, Continue onto N Wales Expy/A55 33.5 mile, At junction 19, take the A470 exit to Betws-y-Coed/Llandudno 0.3 mile, At Glan Conwy Interchange, take the 1st exit onto Conway Rd/A470 404 ft, At the roundabout, take the 3rd exit and stay on Conway Rd/A470 230 ft, Continue straight to stay on Conway Rd/A470 11.0 mile, Turn right onto B5106 0.4 mile, Turn left to stay on B5106 3.1 mile, Turn left to stay on B5106 180 ft, Turn right onto A5 5.2 mile, Turn left onto A4086 4.2 mile, Turn right to stay on A4086 1.0 mile, Turn left 89 ft, Turn right 180 ft, Destination will be on the left.

Demise:

Access Route To Site:

Existing Access Route:

Proposed Access Route:



Master:	MBNL / EE / H3G:	Project:	Purpose of Issue:	Issue:
M001	MBNL	EE EAS	Planning	F
Date:	30/03/2023	Revision / Upgrade Description:		
Drawn:	Naveen B	Seventh Issue: Comments Revised		
Checked:	Irfan			
Approved:	MITIE DA			
Master:	MBNL / EE / H3G:	Project:	Purpose of Issue:	Issue:
M001	MBNL	EE EAS	Planning	E1
Date:	23/01/2023	Revision / Upgrade Description:		
Drawn:	AMG	Sixth Issue: Comments Revised		
Checked:	ES			
Approved:	MITIE DA			
Master:	MBNL / EE / H3G:	Project:	Purpose of Issue:	Issue:
M001	MBNL	EE EAS	Planning	E
Date:	20/12/2022	Revision / Upgrade Description:		
Drawn:	AMG	Fifth Issue: Comments Revised		
Checked:	ES			
Approved:	MITIE DA			



Site Name: PEN Y PASS

EAS Site Reference: EAS1019

Address: PEN-Y-PASS
NANT GWYNANT
CAERNARFON
LL55 4NU

Title: 002A SITE LOCATION PLAN - A

Project: EE EAS

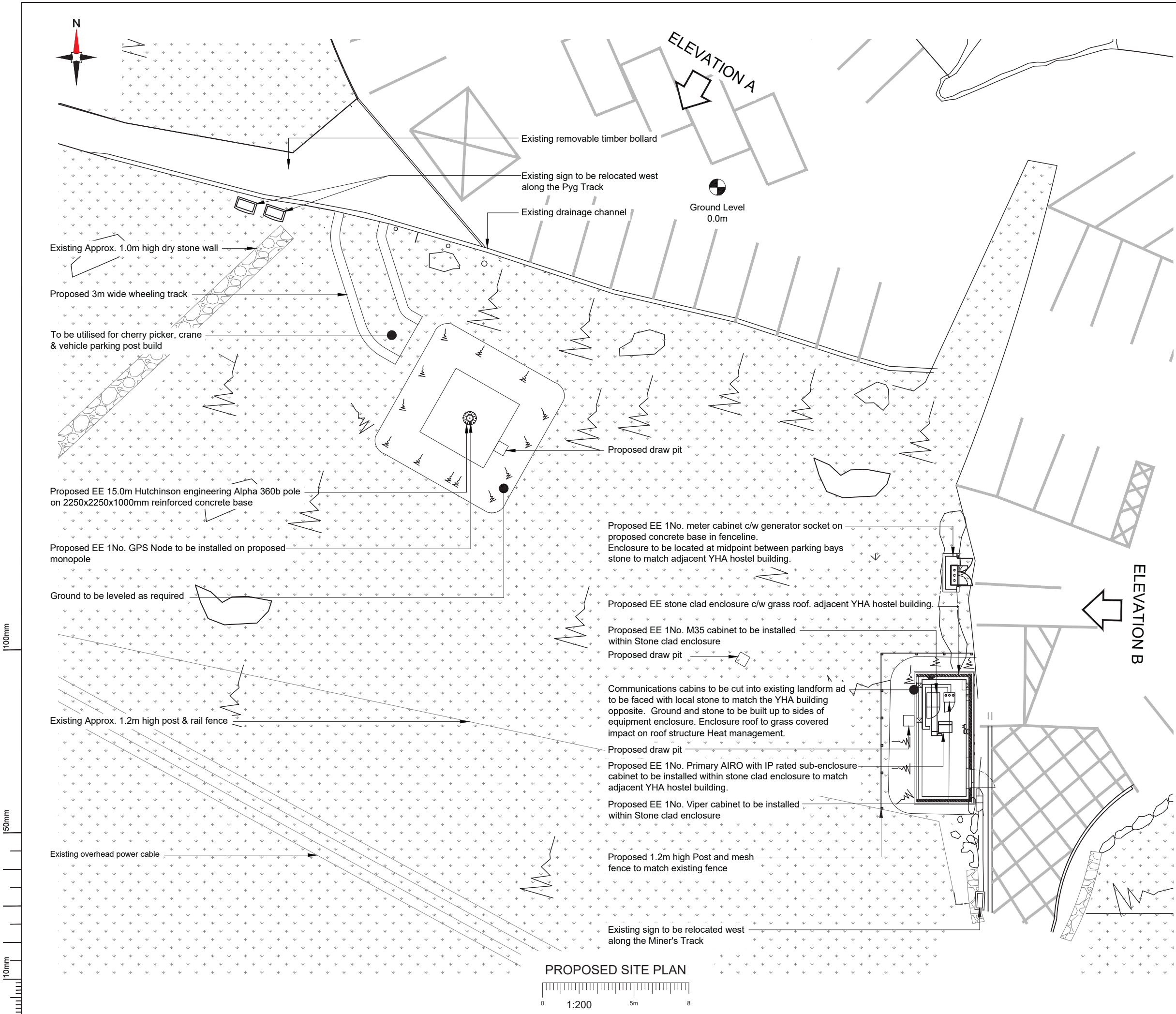
Purpose of Issue: GENERAL ARRANGEMENT

EE Site ID: 78823 SRN Site ID: SRN1019

Master Drawing No: EAS1019F_78823_SRN1019_M001 Issue: F

FIGURE 02

**Reproduction of Mitie Drawing No. EAS1019F_78823_SRN1019_M001
Issue G, showing proposed site plan and proposed site elevations. Scale:
as shown.**



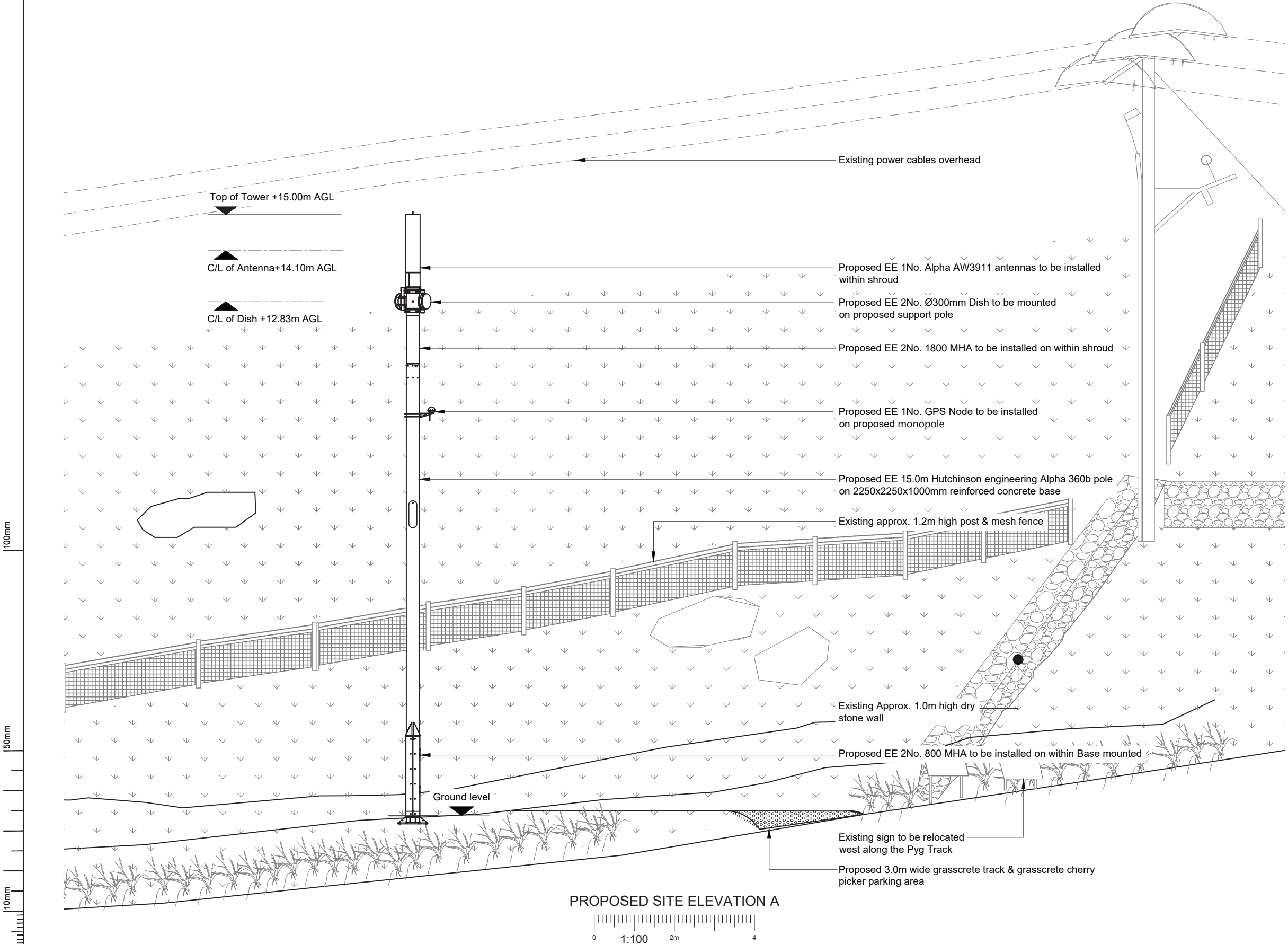
NOTES:

1. ALL DIMENSIONS IN MM UNLESS OTHERWISE NOTED.

Master:	MBNL / EE / H3G:	Project:	Purpose of Issue:	Issue:
M001	MBNL	EE EAS	Planning	G
Date:	16/11/2023	Revision / Upgrade Description:		
Drawn:	A. Marquez	Eighth Issue: Comments Revised		
Checked:	Irfan			
Approved:	MITIE DA			
Master:	MBNL / EE / H3G:	Project:	Purpose of Issue:	Issue:
M001	MBNL	EE EAS	Planning	F
Date:	31/05/2023	Revision / Upgrade Description:		
Drawn:	Naveen B	Seventh Issue: Comments Revised		
Checked:	Irfan			
Approved:	MITIE DA			
Master:	MBNL / EE / H3G:	Project:	Purpose of Issue:	Issue:
M001	MBNL	EE EAS	Planning	E1
Date:	23/01/2023	Revision / Upgrade Description:		
Drawn:	AMG	Sixth Issue: Comments Revised		
Checked:	ES			
Approved:	MITIE DA			



Site Name:	PEN Y PASS
EAS Site Reference:	EAS1019
Address:	PEN-Y-PASS NANT GWYNANT CAERNARFON LL55 4NU
Title:	200 PROPOSED SITE PLAN
Project:	EE EAS
Purpose of Issue:	GENERAL ARRANGEMENT
EE Site ID:	SRN Site ID:
78823	SRN1019
Master Drawing No:	Issue:
EAS1019F_78823_SRN1019_M001	G



- NOTES:
- ALL DIMENSIONS IN MM UNLESS OTHERWISE NOTED.

Master:	MBNL / EE / H3G:	Project:	Purpose of Issue:	Issue:
M001	MBNL	EE EAS	Planning	G
Date:	16/11/2023	Revision / Upgrade Description:		
Drawn:	A. Marquez	Eighth Issue: Comments Revised		
Checked:	Irfan			
Approved:	MITIE DA			
Master:	MBNL / EE / H3G:	Project:	Purpose of Issue:	Issue:
M001	MBNL	EE EAS	Planning	F
Date:	31/05/2023	Revision / Upgrade Description:		
Drawn:	Naveen B	Seventh Issue: Comments Revised		
Checked:	Irfan			
Approved:	MITIE DA			
Master:	MBNL / EE / H3G:	Project:	Purpose of Issue:	Issue:
M001	MBNL	EE EAS	Planning	E1
Date:	23/01/2023	Revision / Upgrade Description:		
Drawn:	AMG	Sixth Issue: Comments Revised		
Checked:	ES			
Approved:	MITIE DA			



Site Name:	PEN Y PASS		
EAS Site Reference:	EAS1019		
Address:	PEN-Y-PASS NANT GWYNANT CAERNARFON LL55 4NU		
Title:	250 PROPOSED SITE ELEVATION A		
Project:	EE EAS		
Purpose of Issue:	GENERAL ARRANGEMENT		
EE Site ID:	78823	SRN Site ID:	SRN1019
Master Drawing No:	EAS1019F_78823_SRN1019_M001		Issue: G



1. ALL DIMENSIONS IN MM UNLESS OTHERWISE NOTED.



EAS Site Reference:	EAS1019
---------------------	---------

Address:

PEN-Y-PASS
NANT GWYNANT
CAERNARFON
LL55 4NU

Title: 251 PROPOSED SITE ELEVATION B

Project:	EE EAS
----------	--------

Purpose of Issue: <div style="text-align: center; font-size: 24pt; font-weight: bold;">GENERAL ARRANGEMENT</div>

EE Site ID: 78823	SRN Site ID: SRN1019
-----------------------------	--------------------------------

Master Drawing No:	Issue:
EAS1019F_78823_SRN1019_M001	G

FIGURE 03

Location of proximity archaeological assets. Based on Ordnance Survey 1:10000 County Series Map. Scale 1:2500@A4. © Crown copyright and database rights 2023 OS 100020577. Contains National Statistics data © Crown copyright and database right 2023.

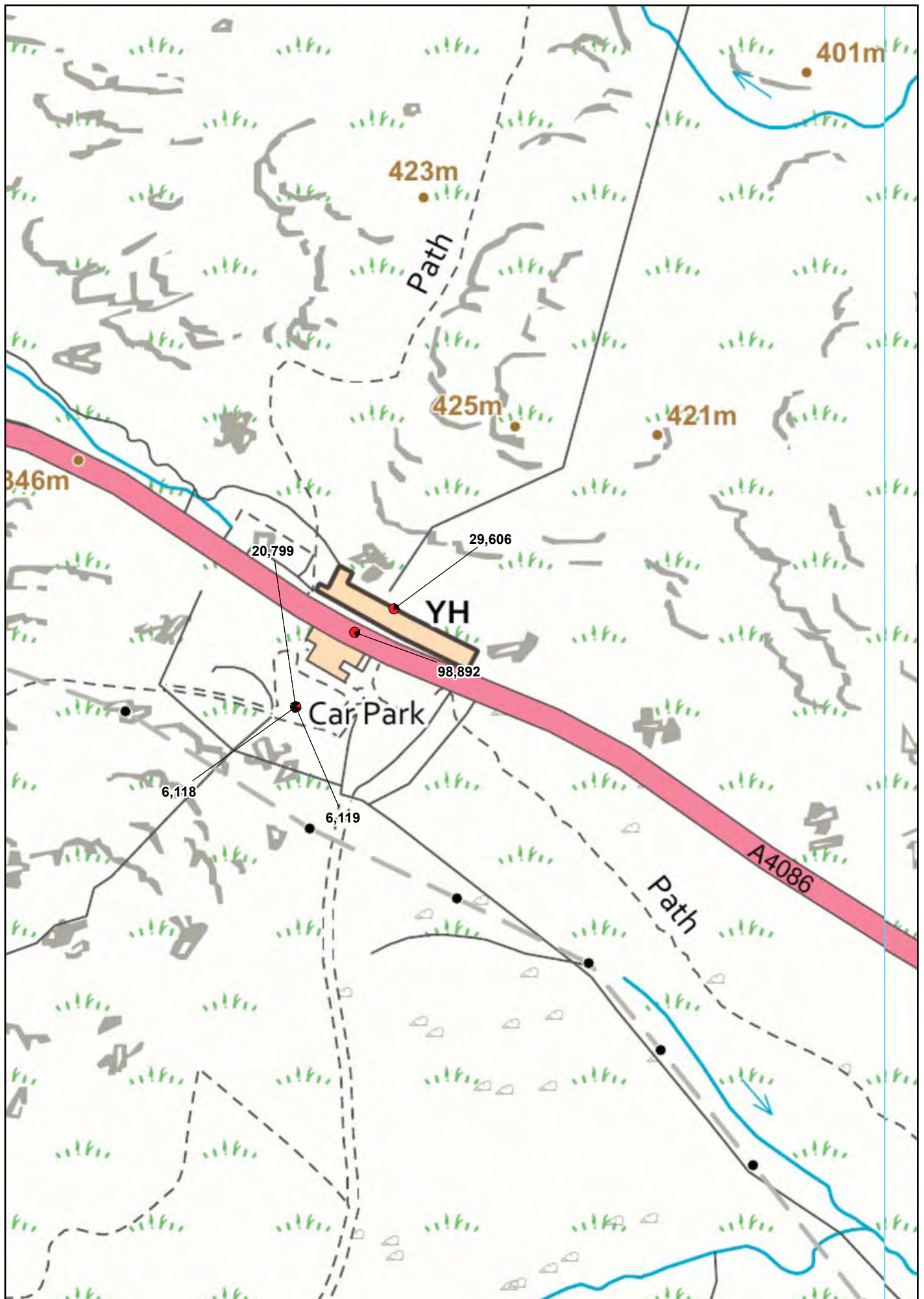


FIGURE 03: Location of proximity archaeological assets. Based on Ordnance Survey 1:10000 County Series Map. Scale 1:2500@A4. © Crown copyright and database rights 2023 OS 100020577. Contains National Statistics data © Crown copyright and database right 2023.

FIGURE 04

**Reproduction of First Edition Ordnance Survey 1-inch to 6-inch
Caernarvonshire County Series Map Sheet XX.NE. Published 1891. Scale
1:5000@A4.**

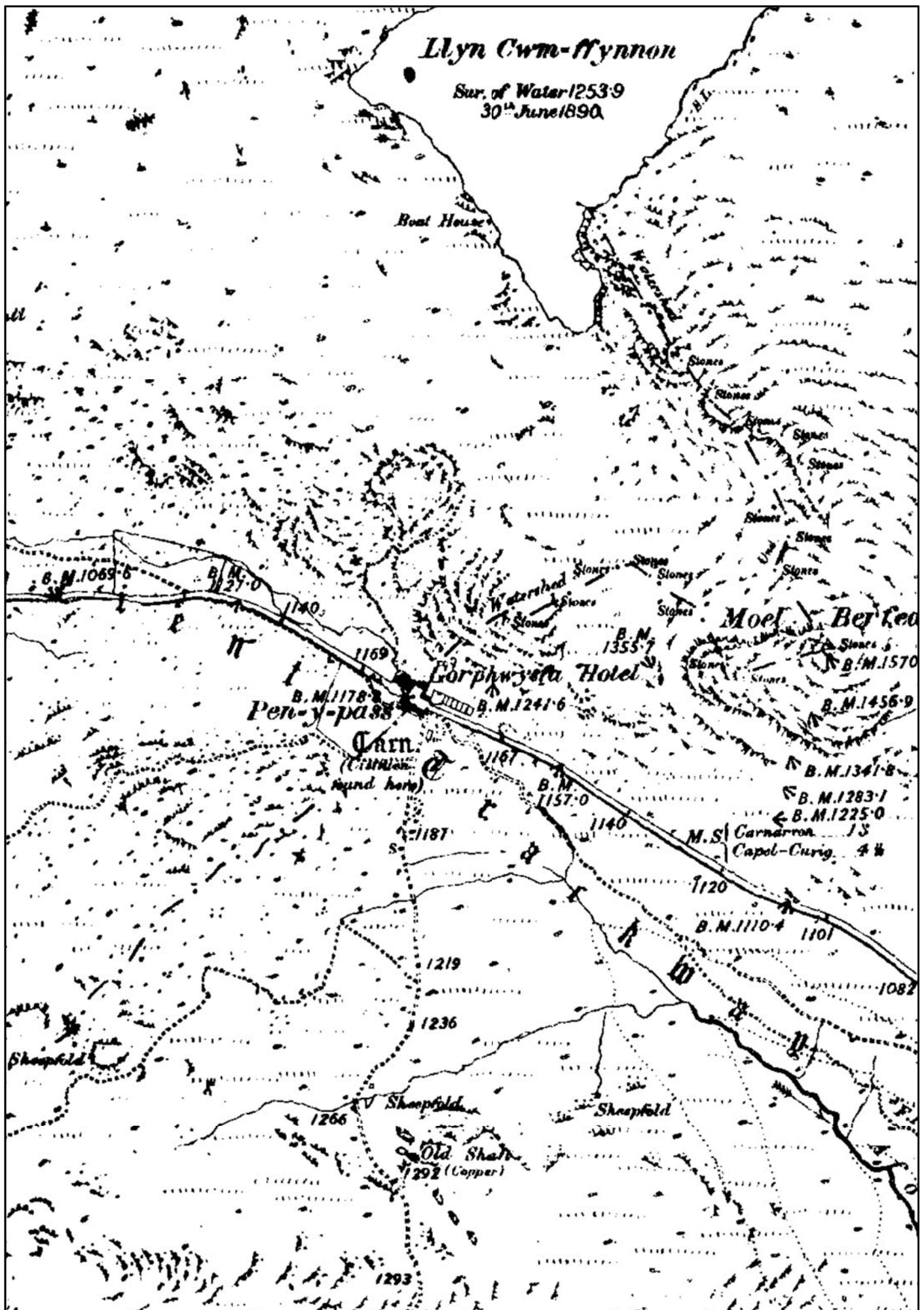


FIGURE 04: Reproduction of First Edition Ordnance Survey 1-inch to 6-inch
Caernarvonshire County Series Map Sheet XX.NE. Published 1891. Scale 1:5000@A4.

FIGURE 05

**Reproduction of Second Edition Ordnance Survey 1-inch to 6-inch
Caernarvonshire County Series Map Sheet XX.NE. Published 1901. Scale
1:5000@A4.**

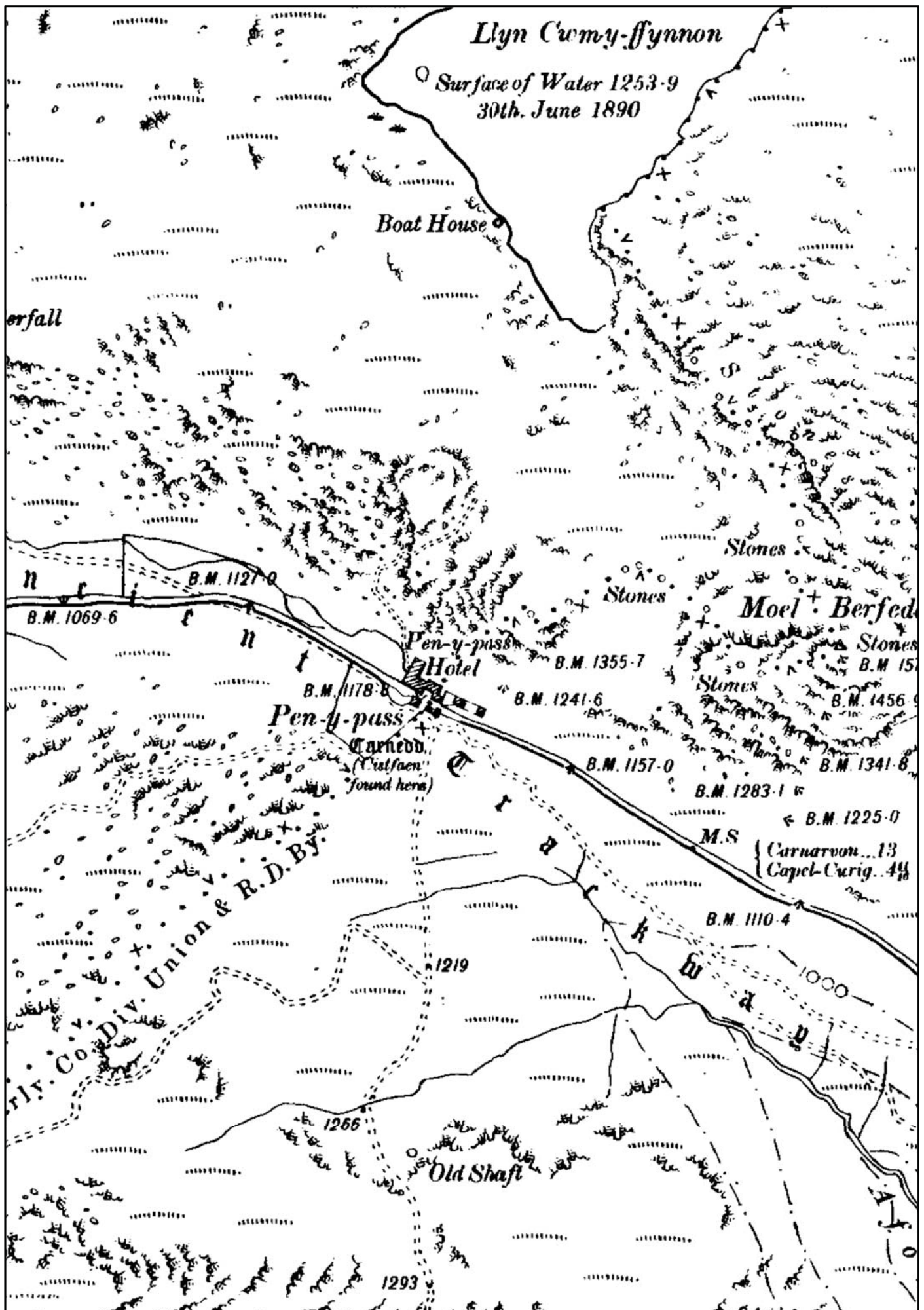


FIGURE 05 Reproduction of Second Edition Ordnance Survey 1-inch to 6-inch Caernarvonshire County Series Map Sheet XX.NE. Published 1901. Scale 1:5000@A4.

FIGURE 06

**Reproduction of Third Edition Ordnance Survey 1-inch to 6-inch
Caernarvonshire County Series Map Sheet XX.NE. Published 1920. Scale
1:5000@A4.**

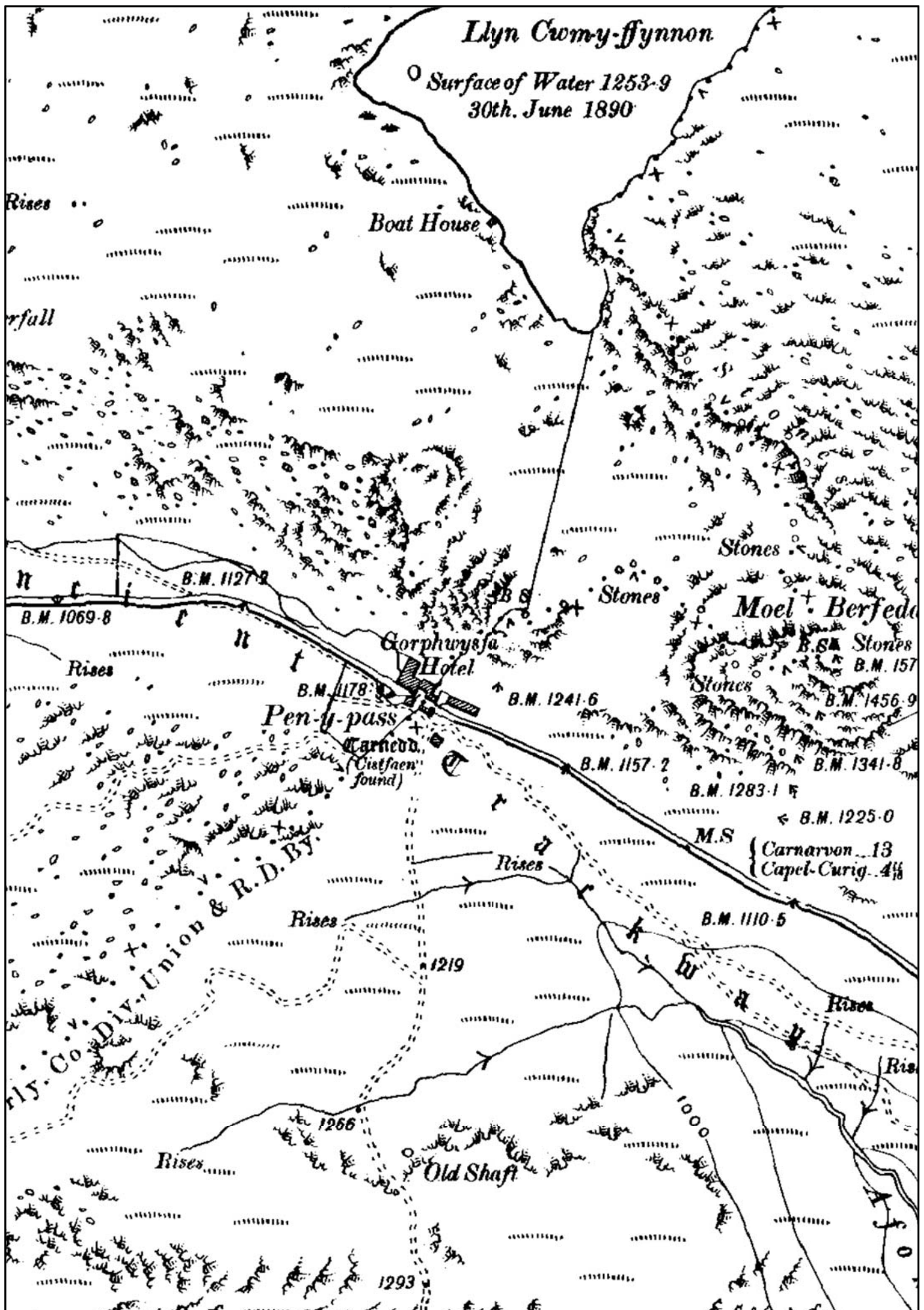


FIGURE 06 Reproduction of Third Edition Ordnance Survey 1-inch to 6-inch
Caernarvonshire County Series Map Sheet XX.NE. Published 1920. Scale 1:5000@A4.

FIGURE 07

**Reproduction of Fourth Edition Ordnance Survey 1-inch to 6-inch
Caernarvonshire County Series Map Sheet XX.NE. Published 1953. Scale
1:5000@A4.**

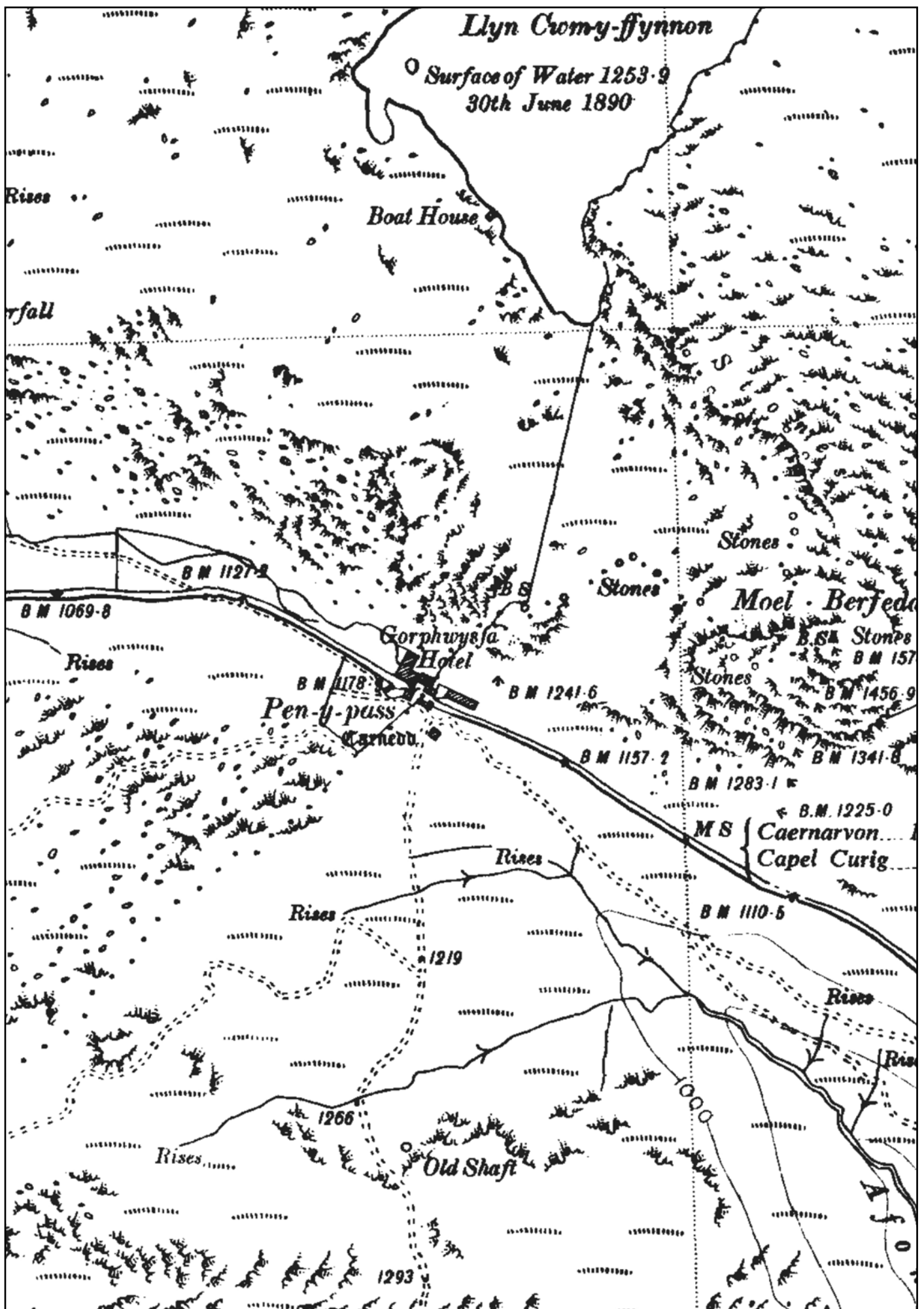


FIGURE 07: Reproduction of Fourth Edition Ordnance Survey 1-inch to 6-inch Caernarvonshire County Series Map Sheet XX.NE. Published 1953. Scale 1:5000@A4.

APPENDIX I

Gwynedd Archaeological Watching Brief Pro-Forma

YMDDIRIEDOLAETH ARCHAEOLEGOL GWYNEDD ARCHAEOLOGICAL TRUST		
WATCHING BRIEF DAY RECORD		Date
Project name	Project number	Compiler
Location		
Description		
Times of travelling and on-site		
Drawn record details		
Photographic record details		

APPENDIX II

Gwynedd Archaeological Trust Photographic Metadata Pro-Forma



Digital Photographic Record

Include main context numbers for each shot, drawing numbers for sections and any other relevant numbers for cross referencing.

Delete any unwanted photos **immediately** from the camera.

Regularly upload photographs to computer.

[illegible]

APPENDIX III

Gwynedd Archaeological Trust Selection Strategy & Digital Management Plan

G2816_Pen_y_Pass_Park

05/12/2023 v1.0

Selection Strategy

Project Information

Project Management

Project Manager	John Roberts john.roberts @heneb.co.uk	
Archaeological Archive Manager	John Roberts john.roberts @heneb.co.uk	
Organisation	Gwynedd Archaeological Trust	
Stakeholders		Date Contacted
Collecting Institution(s)	GAT Historic Environment Record	05/12/2023
	RCAHMMW	On completion of Project Archive
	Storiell, Ffordd Gwynedd, Bangor, Gwynedd LL57 1DT	If applicable, post-fieldwork based on artefact recovery
Project Lead / Project Assurance	Gwynedd Archaeological Planning Services	tbc
Other (client)	<i>Gillan COnsulting</i>	n/a

Resources

Resources required

Describe the resources required to implement this Selection Strategy, particularly if unusual resources are required.

No unusual resources required outside of GAT normal operating equipment and personnel.

Context

Describe below the context of this Selection Strategy. You should refer to:

- The aims and objectives of the project;
- Local Authority guidance (including the brief);
- Research Frameworks;
- The repository collection development policy and/or deposition policy;
- Material-specific guidance documents.

Note: This section may be copied from your Project Design/WSI to ensure all Stakeholders receive this context information.

The full aims and objectives of this project are detailed in the project specific WSI.

Gwynedd Archaeological Trust (GAT) has been commissioned by *Gillan Consulting* to undertake an archaeological watching brief during the installation of a 15m high monopole telecoms mast with associated antennas, ground-based apparatus and ancillary infrastructure at Pen y Pass Car Park, Nant Gwynant. LL55 4NU (NGR SH64725562). The site is located southeast of Llanberis, with the Pyg and Miner's Tracks leading up the mountain commencing at the car park edge. The works are scheduled from January 2024 under planning reference NP2/11/52L, with the watching brief required under Conditions 7 and 8.

Source: Gwynedd Archaeological Trust. 2023. Dinas Dinlle Car Park: Written Scheme of Investigation For Archaeological Mitigation. Prepared for YGC. November 2023. Project G2813.

1 – Digital Data

Stakeholders

Name the individual(s) responsible for the Digital Data Selection decisions (i.e. Archaeological Archive Manager, Project Manager, Collections Curator).

John Roberts (GAT Principal Archaeologist)

Selection

Location of Data Management Plan (DMP)

Selection of digital data elements should be considered in your project's DMP. For the purpose of the Selection Strategy, you can either copy the selection section of your DMP below, or attach it as an appendix to this document. Please indicate here if the DMP is attached.

All digital data will be collected, stored and selected in lines with the Gwynedd Archaeological Trust (GAT) Data Management Plan located on GAT's servers (available on request).

The selection strategy in your DMP should:

- 1.1 Define what digital data will be selected for inclusion in the archaeological archive, how this will be done, and why. Do not forget to consider that specialists may have digital data that should be included in the archaeological archive.
- 1.2 Identify the selection review points during the project (i.e. project planning, data gathering, analysis and reporting and archive compilation).
- 1.3 Reference all relevant standards, policies or guidelines (e.g. digital repository deposition requirements) and specialist advice sought.
- 1.4 Identify any selection decisions that differ from standard guidelines and explain why.

Following the completion of the fieldwork, a working project archive will be created based on following task list;

1. Pro-formas: all cross referenced and complete;
2. Photographic Metadata: completed in *Microsoft Access* and cross-referenced with all pro-formas;
3. Survey data: downloaded using a Computer Aided Design package;
4. Sections (if relevant): all cross referenced and complete;
5. Plans (if relevant): all cross referenced and complete;
6. Artefacts (if relevant): quantified and identified; register completed;
7. Ecofacts (if relevant): quantified and register completed;
8. Context register (if relevant): quantified and register completed.

All relevant site archive data will be added to a digital project register specific to this project, which will be prepared in *Microsoft Excel*. This data will then be used as the basis for the physical and digital dataset archives. Information from these will be used to compile the project report. The physical archive will be stored in a designated project folder and the location confirmed in the Trust project database; the digital dataset will be stored on a dedicated Trust server, with the location confirmed in the Trust project database via a specific hyperlink. External datasets for the HER and RCAHMW are as defined in the dissemination strategy below. De-selected digital data will be confirmed in an updated digital management plan appended to the final report

De-Selected Digital Data

The procedure for dealing with De-selected digital data and what specialist advice informed this process should be recorded in your DMP. Please copy this information here or attach your DMP as an appendix to this document.

It is envisaged that the de-selected material will be retained on the GAT servers for 2 years following the completion of the project at which point they will be reviewed and deleted as necessary in line with the GAT DMP.

Amendments

Detail any amendments to the above selection strategy here.

Date	Amendment	Rationale	Stakeholders

2 – Documents

Stakeholders

Name the individual(s) responsible for the Documents Selection decisions (i.e. Archaeological Archive Manager, Project Manager, Repository Representative).

John Roberts – Principal Archaeologist, Gwynedd Archaeological Trust;
Sean Derby – Historic Environment Record, Gwynedd Archaeological Trust;
Gareth Edwards, *Head of Knowledge and Understanding, RCAHMW*

Selection

Describe your Selection Strategy for the Documents elements of the archaeological archive. To do this you must:

- 2.1 Define which documents will be selected for inclusion in the archaeological archive, how this will be done, and why. Do not forget to consider that specialists may have documents that should be included in the archaeological archive.
- 2.2 Identify the selection review points during the project (e.g. project planning, data gathering, analysis and reporting and archive compilation).
- 2.3 Reference all relevant standards, policies or guidelines (e.g. digital repository deposition requirements) and specialist advice sought.
- 2.4 Identify any selection decisions that differ from standard guidelines and explain why.

- A digital report will be provided to the regional Historic Environment Record; this will be submitted within six months of project completion (final report only), along with a digital dataset comprising an Event PRN summary. The report and dataset will be submitted in accordance with the required standards set out in *Guidance for the Submission of Data to the Welsh Historic Environment Records (HERs)* (Version 2); and
- A digital report and digital archive dataset will be provided to Royal Commission on Ancient and Historic Monuments, Wales (final report only), in accordance with the *RCAHMW Guidelines for Digital Archives Version 1*. The dataset will be prepared in the format required by RCAHMW and will include:
 - Photographic metadata (Microsoft Access);
 - Photographic archive (TIFF format);

- Project Information form (Excel);
- File Information form (Excel) – Microsoft Word report text final;
- File Information form (Excel) – Photographic metadata (general);
- File Information form (Excel) – Adobe PDF report final; and
- File Information form (Excel) - Photographic metadata (detail).

De-Selected Documents

Describe the procedure for dealing with De-selected material and what specialist advice has informed this procedure.

It is envisaged that the material de-selected from inclusion in the preserved archive will be duplicates or re-productions created during the analysis phase of the project. De-selected material will therefor either be retained to supplement GAT's research files or recycled.

Amendments

Detail any amendments to the above selection strategy here.

Date	Amendment	Rationale	Stakeholders

3 – Materials

Note: This step should be completed for each material component of the archaeological archive. Copy this table for the various materials as required, providing the 'Material Type' and a section identifier (eg. '3.1') for each.

Material type	Bulk Finds	Section 3.	
----------------------	------------	-------------------	--

Stakeholders

Name the individual(s) responsible for the Materials Selection decisions (i.e. Archaeological Archive Manager, Project Manager, Repository Representative).

John Roberts – Principal Archaeologist, Gwynedd Archaeological Trust;
Jenny Emmett – Senior Planning Archaeologist, Gwynedd Archaeological Planning Service;
Curatorial Officer at Storiel

Diagnostic artefacts will be retained for further examination and identification. Pottery sherds of 19th and 20th century date will be examined on site and the context from which they were retrieved noted but the sherds will not be retained.

Trust staff will undertake initial identification, but any additional advice would be sought from a wide range of consultants used by the Trust, including National Museums and Galleries of Wales at Cardiff.

The artefacts will be treated according to guidelines issued by the UK Institute of Conservation (Watkinson and Neal 2001) in particular the advice provided within *First Aid for Finds* (Rescue 1999) and Historic England.

Any waterlogged artefacts (e.g. wood or leather) that are to be recovered for post-excavation assessment and analysis will be processed in accordance with *Environmental Archaeology: a guide to the theory and practice of methods, from sampling and recovery to post-excavation* (English Heritage, 2011) and specifically in accordance with Brunning and Watson (2010) for waterlogged wood and Historic England (2012) for waterlogged leather. In such cases an external specialist will be contacted to agree an appropriate sampling and recovery strategy via Lucy Whittingham | Project Manager (post-excavation) | AOC Archaeology | telephone: 0208 843 7380 | email: lucy.whittingham@aocarchaeology.com.

All finds are the property of the landowner; however, it is Trust policy to recommend that all finds are donated to an appropriate museum (in this case Storiel, Ffordd Gwynedd, Bangor, Gwynedd LL57 1DT), where they can receive specialist treatment and study.

GAT will contact the landowner via client for agreement regarding the transfer of artefacts, initially to GAT and subsequently to the relevant museum (Storiel). A GAT produced pro-forma will be issued to the landowner where they are given the option to donate the finds or to record that they want them returning to them once analysis and assessment has been completed. Artefacts will be transferred to the Storiel in accordance with their guidelines.

Selection

Describe your Selection Strategy for each material type and or object type. To do this you must:

- 3.1 State the Selection Strategy you are applying to each category of material, how this will be done, and why.
- 3.2 Identify the selection review points during the project (e.g. project planning, data gathering, analysis and reporting and archive compilation).
- 3.3 Reference all relevant standards, policies or guidelines (e.g. thematic, period, and regional, Research Frameworks, repository deposition policies) and specialist advice sought.
- 3.4 Identify any selection decisions that differ from standard guidelines and explain why.

The Materials Selection Template may be useful in structuring this section.

The full material archive returned to the GAT offices will be reviewed following analysis: Stakeholders (see above) will make selection decisions based on specialists reports and selection recommendations and SDMS collecting policy. The selection will take place during archive completion.

Uncollected Material

If you are practising selection in the field, describe the process that will be applied. To do this you must:

- Detail how you will characterise, quantify and record all uncollected material on site.
- Explain how you will dispose of, or re-distribute, uncollected material.

Any uncollected material will be left on-site to be incorporated into backfill.

De-Selected Material

Describe what you will do with the de-selected material. All processed material should have been adequately recorded before de-selection.

All bulk finds will be assessed and recorded to appropriate standards. De-selected material will be returned to the landowner as agreed by the landowner and curatorial archaeologist.

Amendments

Detail any amendments to the above selection strategy here.

Date	Amendment	Rationale	Stakeholders

Materials Selection Template

This table may be inserted into Section 3 of the main Selection Strategy Template to help present differing selection strategies for different material types

Find Type	Selection Strategy	Stakeholders	Review Points

Gwynedd Archaeological Trust Data Management Plan Overview

The sections below are the basic components of the Data Management Plan. Each section comprises a series of sections which need to be completed. The Work Digital / Think Archive guidance provides a full version of this document which includes Questions to Consider, Guidance and Examples where appropriate.

Section 1: Project Administration
<ul style="list-style-type: none">• Key project details, unique identifiers and contacts
Section 2: Data Collection
<ul style="list-style-type: none">• What data will you collect or create?• How will the data be collected or created?
Section 3: Documentation and Metadata
<ul style="list-style-type: none">• What documentation and metadata will accompany the data?
Section 4: Ethics and Legal Compliance
<ul style="list-style-type: none">• How will you manage any ethical, copyright and Intellectual Property Rights (IPR) issues?
Section 5: Storage and Backup
<ul style="list-style-type: none">• How will the data be stored, accessed and backed up during the research?
Section 6: Selection and Preservation
<ul style="list-style-type: none">• Which should be retained, shared, and/or preserved?• What is the long-term preservation plan for the dataset?• Have you contacted the data repository?• Have the costs of archiving been fully considered?
Section 7: Data Sharing and Accessibility
<ul style="list-style-type: none">• How will you share the data and make it accessible?• Are any restrictions on data sharing required?
Section 8: Responsibilities
<ul style="list-style-type: none">• Who will be responsible for data management?

SECTION 1: PROJECT ADMINISTRATION

Project ID
G2816_Pen_y_Pass_Park
Project Name
G2816_Pen_y_Pass_Park
Project Description
Gwynedd Archaeological Trust (GAT) has been commissioned by <i>Gillan Consulting</i> to undertake an archaeological watching brief during the installation of a 15m high monopole telecoms mast with associated antennas, ground-based apparatus and ancillary infrastructure at Pen y Pass Car Park, Nant Gwynant. LL55 4NU (NGR SH64725562). The site is located southeast of Llanberis, with the Pyg and Miner's Tracks leading up the mountain commencing at the car park edge. The works are scheduled from January 2024 under planning reference NP2/11/52L, with the watching brief required under Conditions 7 and 8.
Project Funder / Grant reference
Gillan Consulting
Project Manager
John Roberts
Project Archaeologist
Mike Woods
Data Contact Person
John Roberts
Date DMP created
05/12/2023
Date DMP last updated
05/12/2023
Version
v1
Related data management policies
G2816_Pen_y_Pass_Park_WSI & G2816_Pen_y_Pass_Park_v1 (Selection Strategy)

SECTION 2: DATA COLLECTION

What data will you collect or create?
<p>Following the completion of the fieldwork, a working project archive will be created based on following task list;</p> <ol style="list-style-type: none">1. Pro-formas: all cross referenced and complete;2. Photographic Metadata: completed in <i>Microsoft Access</i> and cross-referenced with all pro-formas;3. Survey data: downloaded using a Computer Aided Design package;4. Sections (if relevant): all cross referenced and complete;5. Plans (if relevant): all cross referenced and complete;6. Artefacts (if relevant): quantified and identified; register completed;7. Ecofacts (if relevant): quantified and register completed;8. Context register (if relevant): quantified and register completed. <p>All relevant site archive data will be added to a digital project register specific to this project, which will be prepared in <i>Microsoft Excel</i>.</p> <p>The site archive data will then be processed, final illustrations will be compiled and a report will be produced which will detail and synthesise the results.</p> <p>The physical archive will be stored in a designated project folder and the location confirmed in the Trust project database; the digital dataset will be stored on a dedicated GAT server, with the location confirmed in the GAT project database via a specific hyperlink. External datasets for the HER and RCAHMW are as defined in the dissemination</p>

strategy below. De-selected digital data will be confirmed in a project specific Selection Strategy document appended to the final report.

On final approval, the following dissemination and archiving of the report and digital dataset will apply:

How will the data be collected or created?

- All attendances, subsurface activity, photographs, and contexts records will be recorded using GAT pro-formas. The records will include topsoil and subsoil depths, as well as the composition of the glacial horizon. All encountered subsurface features will be recorded on GAT pro-formas with detailed notations and will be recorded photographically with an appropriate scale, located via GPS and a measured survey completed, either hand drawn or using a Trimble R8 GPS unit.
- Photographic images will be taken using a digital SLR camera set to maximum resolution in RAW format; the photographic record will be digitised in *Microsoft Access* as part of the fieldwork archive and dissemination process. Photographic images will be archived in TIFF format using Adobe Photoshop; the archive numbering system will start from **G2816_001**. A photographic ID board will be used during the Targeted strip/map/record to record site code, image orientation and any relevant context numbers.

SECTION 3: DOCUMENTATION AND METADATA

What documentation and metadata will accompany the data?

- A digital report(s) will be provided to the client and GAPS (draft report then final report);
- A digital report will be provided to the regional Historic Environment Record; this will be submitted within six months of project completion (final report only), along with a digital dataset comprising an Event PRN summary. The report and dataset will be submitted in accordance with the required standards set out in *Guidance for the Submission of Data to the Welsh Historic Environment Records (HERs)* (Version 2); and
- A digital report and digital archive dataset will be provided to Royal Commission on Ancient and Historic Monuments, Wales (final report only), in accordance with the *RCAHMW Guidelines for Digital Archives Version 1*. The dataset will be prepared in the format required by RCAHMW and will include:
 - Photographic metadata (Microsoft Access);
 - Photographic archive (TIFF format);
 - Project Information form (Excel);
 - File Information form (Excel) – Microsoft Word report text final;
 - File Information form (Excel) – Photographic metadata (general);
 - File Information form (Excel) – Adobe PDF report final; and
 - File Information form (Excel) - Photographic metadata (detail)

SECTION 4: ETHICS AND LEGAL COMPLIANCE

How will you manage any ethical, copyright and Intellectual Property Rights (IPR) issues?

The project archive does not include data which requires formal consent to be used or included;

Digital data archive will be compliant with GDPR 2018 legislation?

Data be stored in secure servers with password access;

Data will be transferred securely;

Data will be owned by Gwynedd Archaeological Trust.

SECTION 5: DATA SECURITY: STORAGE AND BACKUP

How will the data be stored, accessed and backed up during the research?

All data will be held on Gwynedd Archaeological Trust servers and backed up onto an external NAS Drive. Access will be restricted and password limited

SECTION 6: SELECTION AND PRESERVATION

Which data should be retained, shared, and/or preserved?

The core project dataset will be retained, with content dictated by the Gwynedd Archaeological Trust contract section project folder system and server. Any de-selected material will be retained on the server for 2 years following the

completion of the project at which point they will be reviewed and deleted as necessary. Any de-selected material will be confirmed in the Microsoft Access project database. De-selected material may include duplicate or supplementary data that is not required for the core project archive.

What is the long-term preservation plan for the dataset?

- Internally, the dataset will be retained in a project specific folder that will remain accessible to project personnel;
- Externally, the relevant datasets will be retained by the regional Historic Environment Record and RCAHMW; dataset content will be dictated by their respective requirements.

Have you contacted the data repository?

The regional Historic Environment Record has been contacted and an event Primary Reference Number sourced ahead of data submission; on project completion, data will be submitted in accordance with the required standards set out in *Guidance for the Submission of Data to the Welsh Historic Environment Records (HERs) (Version 2)*; RCAHMW will be contacted on project completion, with data then submitted in accordance with *RCAHMW Guidelines for Digital Archives Version 1*.

Have the costs of archiving been fully considered?

Data archiving costs have been incorporated into the project budget.

SECTION 7: DATA SHARING

How will you share the data and make it accessible?

- Internally, a project specific folder will be used for data storage that will remain accessible to project personnel;
- Externally, data will be submitted to the regional Historic Environment Record and RCAHMW and they will be responsible for accessibility.

Are any restrictions on data sharing required?

No

SECTION 8: RESPONSIBILITIES

Who will be responsible for implementing the data management plan?

John Roberts, Principal Archaeologist, Gwynedd Archaeological Trust

APPENDIX II

Heneb: Gwynedd Archaeology Trust Photographic Metadata

PHOTO RECORD NUMBER*	PROJECT NAME	DESCRIPTION	VIEW FROM	SCALE(S)	CREATOR OF DIGITAL PHOTO*	DATE	PLATES
G2816_001	Pen y Pass Car Park	View of tower base pit showing topsoil and bedrock and length of pit	SE	1x3m	Anne Marie Oattes	14/10/2024	1
G2816_002	Pen y Pass Car Park	View of tower base pit showing topsoil and bedrock showing width	E	1x3m	Anne Marie Oattes	14/10/2024	2
G2816_003	Pen y Pass Car Park	View of tower base pit showing topsoil and bedrock showing depth	SSE	1x3m	Anne Marie Oattes	14/10/2024	3
G2816_004	Pen y Pass Car Park	View of tower base pit showing topsoil and bedrock showing depth	S	1x3m	Anne Marie Oattes	14/10/2024	4
G2816_005	Pen y Pass Car Park	View of tower base pit showing topsoil and bedrock showing depth	S	1x3m	Anne Marie Oattes	14/10/2024	5
G2816_006	Pen y Pass Car Park	Location shot of working area	NE	not used	Anne Marie Oattes	14/10/2024	6
G2816_007	Pen y Pass Car Park	Location shot showing site to SW of car park	SE	not used	Anne Marie Oattes	14/10/2024	7
G2816_008	Pen y Pass Car Park	Location shot of tower base pit and cable duct trench - view to the SE	NW	not used	Anne Marie Oattes	14/10/2024	8
G2816_009	Pen y Pass Car Park	Location shot showing site to SW of car park	WSW	not used	Anne Marie Oattes	14/10/2024	9
G2816_010	Pen y Pass Car Park	View to NW (scenic shot)	SE	not used	Anne Marie Oattes	14/10/2024	10
G2816_011	Pen y Pass Car Park	View to SE (scenic shot)	NW	not used	Anne Marie Oattes	14/10/2024	11
G2816_012	Pen y Pass Car Park	Excavated area at SE edge of car park close to Pyg and miner's tracks gates (for cabinets)	SE	1x1m	Anne Marie Oattes	14/10/2024	12
G2816_013	Pen y Pass Car Park	Excavated area at SE edge of car park close to Pyg and miner's tracks gates (for cabinets)	NE	1x1m	Anne Marie Oattes	14/10/2024	13
G2816_014	Pen y Pass Car Park	Location shot showing gates to Pyg and miner's tracks	NNE	not used	Anne Marie Oattes	14/10/2024	14

PHOTO RECORD NUMBER*	PROJECT NAME	DESCRIPTION	VIEW FROM	SCALE(S)	CREATOR OF DIGITAL PHOTO*	DATE	PLATES
G2816_015	Pen y Pass Car Park	Closeup view of timber, metal and plastic in made ground/backfill	N/A	not used	Anne Marie Oattes	14/10/2024	15
G2816_016	Pen y Pass Car Park	View of excavated area	S	1x1m	Anne Marie Oattes	14/10/2024	16
G2816_017	Pen y Pass Car Park	View of excavated area for cabinets showing depth of soil, fence post and bedrock in section	ESE	1x1m	Anne Marie Oattes	14/10/2024	17
G2816_018	Pen y Pass Car Park	View along partially excavated cable duct trench	SE	not used	Anne Marie Oattes	14/10/2024	18
G2816_019	Pen y Pass Car Park	View along partially excavated cable duct trench	SE	not used	Anne Marie Oattes	14/10/2024	19
G2816_020	Pen y Pass Car Park	View of W side of cable trench with topsoil removed	ESE	not used	Anne Marie Oattes	14/10/2024	20
G2816_021	Pen y Pass Car Park	View of excavated pit for tower base and cable duct trench	SW	not used	Anne Marie Oattes	14/10/2024	21
G2816_022	Pen y Pass Car Park	View of excavated pit for tower base and cable duct trench	NW	not used	Anne Marie Oattes	14/10/2024	22
G2816_023	Pen y Pass Car Park	View of spoil heap - mostly topsoil	N/A	not used	Anne Marie Oattes	14/10/2024	23
G2816_024	Pen y Pass Car Park	View of spoil heap - more clayey stony subsoil and rock	N/A	not used	Anne Marie Oattes	14/10/2024	24
G2816_025	Pen y Pass Car Park	View along unexcavated cable duct trench with topsoil removed	SW	not used	Anne Marie Oattes	14/10/2024	25
G2816_026	Pen y Pass Car Park	View of area to be excavated for cabinets at of cable duct	N/A	not used	Anne Marie Oattes	06/11/2024	26
G2816_027	Pen y Pass Car Park	View of area to be excavated for cabinets at of cable duct	N/A	not used	Anne Marie Oattes	06/11/2024	27
G2816_028	Pen y Pass Car Park	Partially excavated area (made ground) showing plastic in spoil	N/A	not used	Anne Marie Oattes	06/11/2024	28

PHOTO RECORD NUMBER*	PROJECT NAME	DESCRIPTION	VIEW FROM	SCALE(S)	CREATOR OF DIGITAL PHOTO*	DATE	PLATES
G2816_029	Pen y Pass Car Park	Turf removed from area for cabinets	N/A	not used	Anne Marie Oattes	06/11/2024	29
G2816_030	Pen y Pass Car Park	Ground reduced to glacial clay at edge of car park	N/A	not used	Anne Marie Oattes	06/11/2024	30
G2816_031	Pen y Pass Car Park	Ground reduction to natural clay at the edge of the car park (miners track)	SW	not used	Anne Marie Oattes	06/11/2024	31
G2816_032	Pen y Pass Car Park	Ground reduction to natural clay at the edge of the car park (miners track)	SW	not used	Anne Marie Oattes	06/11/2024	32
G2816_033	Pen y Pass Car Park	Shot of "made ground" backfill	S	not used	Anne Marie Oattes	06/11/2024	33
G2816_034	Pen y Pass Car Park	Shot of "made ground" backfill	SSW	not used	Anne Marie Oattes	06/11/2024	34
G2816_035	Pen y Pass Car Park	Shot of "made ground" backfill showing broken bricks	SSW	not used	Anne Marie Oattes	06/11/2024	35
G2816_036	Pen y Pass Car Park	Window frame removed from made ground in excavation for cabinets	N/A	not used	Anne Marie Oattes	06/11/2024	36
G2816_037	Pen y Pass Car Park	Excavation area mid-ex for cable duct. Top soil removed to bedrock	SE	not used	Anne Marie Oattes	06/11/2024	37
G2816_038	Pen y Pass Car Park	Excavation area mid-ex for cable duct. Top soil removed to bedrock	SE	not used	Anne Marie Oattes	06/11/2024	38
G2816_039	Pen y Pass Car Park	Excavation area mid-ex for cable duct. Top soil removed to bedrock	SE	not used	Anne Marie Oattes	06/11/2024	39
G2816_040	Pen y Pass Car Park	Excavation area mid-ex for cable duct. Top soil removed to bedrock	SE	not used	Anne Marie Oattes	06/11/2024	40
G2816_041	Pen y Pass Car Park	Length of cable duct (excavated through rock)	NW	not used	Anne Marie Oattes	06/11/2024	41

APPENDIX III

Heneb: Gwynedd Archaeology Selection Strategy Final

HD24-014_Pen_y_Pass_Car_Park

03/12/2023 v2.0

Selection Strategy

Project Information

Project Management

Project Manager	John Roberts john.roberts @heneb.co.uk
Archaeological Archive Manager	John Roberts john.roberts @heneb.co.uk
Organisation	Heneb: Gwynedd Archaeology (Archaeological Services)

Stakeholders		Date Contacted
Collecting Institution(s)	Gwynedd Historic Environment Record	05/12/2023
	RCAHMW	On completion of Project Archive
	Storiell, Ffordd Gwynedd, Bangor, Gwynedd LL57 1DT	If applicable, post-fieldwork based on artefact recovery
Project Lead / Project Assurance	Jenny Emmett Heneb: Gwynedd Archaeology Planning Services	n/a
Other (client)	<i>Gillan Consulting</i>	n/a

Resources

Resources required Describe the resources required to implement this Selection Strategy, particularly if unusual resources are required.	No unusual resources required outside of GAT normal operating equipment and personnel.
--	--

Context

The full aims and objectives of this project are detailed in the project specific WSI.

Heneb: Gwynedd Archaeology (Archaeological Services) were commissioned by *Gillan Consulting* to undertake an archaeological watching brief during the installation of a 15m high monopole telecoms mast

with associated antennas, ground-based apparatus and ancillary infrastructure at Pen y Pass Car Park, Nant Gwynant LL55 4NU (NGR SH64725562; cf. [Figure 01](#)). The site is located southeast of Llanberis, with the Pyg and Miner's Tracks leading up the mountain commencing at the car park edge. The works are scheduled from January 2024 under planning reference NP2/11/52L, with the watching brief required under Conditions 7 and 8.

The archaeological watching brief was undertaken during October and November 2024 and in accordance with the following guidelines:

- Guidance for the Submission of Data to the Welsh Historic Environment Records (HERs) Version 2 (The Welsh Archaeological Trusts, 2022);
- Guidelines for digital archives (Royal Commission on Ancient and Historic Monuments of Wales, 2015);
- Management of Archaeological Projects (English Heritage, 1991);
- Management of Research Projects in the Historic Environment: The MoRPHE Project Managers' Guide (Historic England, 2015);
- Standard for archaeological monitoring & recording (Chartered Institute for Archaeologists, 2023);
- Standard and guidance for the collection, documentation, conservation and research of archaeological materials (Chartered Institute for Archaeologists, 2020a); and
- Standard and guidance for the creation, compilation, transfer and deposition of archaeological archives (Chartered Institute for Archaeologists, 2020b).
- Universal Guidance for archaeological monitoring & recording (Chartered Institute for Archaeologists, 2023);

Heneb: Gwynedd Archaeology is part of Heneb: Trust for Welsh Archaeology, which is a Registered Charity Heneb: Gwynedd Archaeology with the Chartered Institute for Archaeologists (CIfA).

1 – Digital Data

Stakeholders

John Roberts-Principal Archaeologist, Heneb: Gwynedd Archaeology

Selection

All digital data will be collected, and selected in lines with the Heneb: Gwynedd Archaeological (GA) Data Management Plan located on GA's servers (available on request).

The final version of all born digital documents have been selected for inclusion in the Preserved Archive; These comprise

- HD24-014_Pen_Y_Pass_Car-Park_Nant_Gwynat_Written Scheme of Investigation (Microsoft Word and Adobe PDF);
- HD24-014_Photographic Metadata (Microsoft Access);
- Gat_1796 (Microsoft Word and Adobe PDF);
- Photographic archive (41 images in Tiff format);
- Photographic archive (41 images in Tiff format);
- 1. Artefacts (if relevant): quantified and identified; register completed;

A digital archive dataset has been created for the Royal Commission on Ancient and Historic Monuments Wales, in accordance with the RCAHMW Guidelines for Digital Archives Version 1. The dataset has been prepared in the format required by RCAHMW and comprise:

- Photographic metadata (Microsoft Access);
- Photographic archive (TIFF format);
- Project Information form (Excel);
- File Information form (Excel) – Microsoft Word report text final;
- File Information form (Excel) – Photographic metadata (general);
- File Information form (Excel) – Adobe PDF report final; and
- File Information form (Excel) - Photographic metadata (detail).

The digital archive has been stored on a dedicated Trust server, with the location confirmed in the Heneb project database via a specific hyperlink.

De-Selected Digital Data

The following client data will not form part of the preserved archive and have been deselected:

The following GAT data generated for the report will not form part of the preserved archive and have been deselected:

- HD24-014_combined_figures.pdf
- HD24-014_combined_plates.pdf
- HD24-014_Figures_and_Plates_List.docx
- HD24-014_Appendix_I.pdf
- HD24-014_Appendix_II.docx
- HD24-014_Appendix_II.pdf
- HD24-014_rear_cover.pdf

- HD24-014_front_cover.pdf
- HD24-014_inner_cover.pdf
- HD24-014_Plates_01_and_02.pdf
- HD24-014_Plates_03_and_04.pdf
- HD24-014_Plates_05_and_06.pdf
- HD24-014_Plates_07_and_08.pdf
- HD24-014_Plates_09_and_10.pdf
- HD24-014_Plates_11_and_12.pdf
- HD24-014_Plates_13_and_14.pdf
- HD24-014_Plates_15_and_16.pdf
- HD24-014_Plates_17_and_18.pdf
- HD24-014_Plates_19_and_20.pdf
- HD24-014_Plates_21_and_22.pdf
- HD24-014_Plates_23_and_24.pdf
- HD24-014_Plates_25_and_26.pdf
- HD24-014_Plates_27_and_28.pdf
- HD24-014_Plates_29_and_30.pdf
- HD24-014_Plates_31_and_32.pdf
- HD24-014_Plates_33_and_34.pdf
- HD24-014_Plates_35_and_36.pdf
- HD24-014_Plates_37_and_38.pdf
- HD24-014_Plates_39_and_40.pdf
- HD24-014_Plates_41

2 – Documents

Stakeholders

John Roberts – Principal Archaeologist, Gwynedd Archaeological Trust;
Sean Derby – Historic Environment Record, Gwynedd Archaeological Trust;
Gareth Edwards, *Head of Knowledge and Understanding, RCAHMW*

Selection

- HD24-014 watching Brief sheets x4
- HD24-014 photographic register sheets x 4

De-Selected Documents

There is no de-selected data



Archaeoleg Gwynedd
Heneb
Gwynedd Archaeology

