

# WELLFIELD REDEVELOPMENT THE MENAI SHOPPING CENTRE BANGOR

## ARCHAEOLOGICAL MITIGATION PHASE 1: BUILDING RECORDING

G1880



Report number : 605

Prepared for  
Gardiner and Theobald  
August 2005

Ymddiriedolaeth Archaeolegol Gwynedd  
Gwynedd Archaeological Trust

WELLFIELD REDEVELOPMENT  
THE MENAI SHOPPING CENTRE  
BANGOR

ARCHAEOLOGICAL MITIGATION  
PHASE 1: BUILDING RECORDING

G1880

Report number : 605

Prepared for

Gardiner and Theobald

By

David Hopewell

August 2005

Ymddiriedolaeth Archaeolegol Gwynedd  
Gwynedd Archaeological Trust

# **WELLFIELD REDEVELOPMENT, THE MENAI SHOPPING CENTRE BANGOR G1880**

## **PHASE 1: BUILDING RECORDING**

### **1. INTRODUCTION**

Gwynedd Archaeological Trust has been contracted to carry out a programme of archaeological mitigation in advance of the demolition of the Wellfield Centre, Bangor and the construction of a new shopping centre and car park. The first phase of the mitigation consists of the production of a record of the standing structure.

### **2. METHODOLOGY**

A programme of building recording was specified in the design brief produced by Gwynedd Archaeological Planning Service (2005) comprising as a minimum:

- Photographic recording of internal elevations and structures
- Photographic recording of external elevations and structures
- Brief Written description of points of interest, distinctive features and current use of units
- Any available plans or architects drawings
- A location plan showing the position and perspective of each photograph

The structure was principally photographed using a Nikon D50 digital SLR. All details and general views were taken using this camera. All accessible elevations were also photographed using a Pentax K1000 conventional film SLR with a shift (perspective correction) lens. A shift lens is designed principally for use in architectural documentation to eliminate convergence (the impression that a building is leaning backwards when a photograph is taken from below). The internal elevations and those fronting onto Garth Road and the High Street were recorded in this fashion. Views of parts of the north-west and all of the north-east facing elevations were obscured by nearby buildings and oblique views were taken in these cases.

A written description was made of the building recording basic structural and distinctive features. A desk-based assessment was produced by Cambria Archaeology (Page 2003) which describes the history of the site prior to the building of the Wellfield Centre. A detailed history of the centre is not included so a small amount of desktop research was carried out during the present phase of the project in order to establish dates for its construction, later modification and general use.

A set of undated architectural plans apparently dating from the early 1980s was provided by the client. These are included, with demolition annotations removed, in the present report (Figs 1 to 4). They do not show the modifications that were carried out in the mid-1980s. The plans were amended to show the current layout using basic OS landline data and sketch drawings produced during the photographic recording process. The position that each photograph was taken from is shown on these plans along with an arrow showing the direction of the photograph (Figs 5 to 8). A catalogue of the photographs is also included in the report (Appendix 1). This provides a brief description of the subject matter of each frame. A total of 104 photographs were taken and these are presented as JPEG files on a CD included with this report.

### **3. RESULTS**

#### **3.1 History of the Wellfield Centre**

Construction of the centre, designed to reinvigorate and modernise Bangor City Centre commenced in the latter part of 1962. The developers were Bredwood Investments Ltd and the chief Architect was Mr Roy Greenhalgh (*North Wales Chronicle* January 1963) The project was well underway by the time the foundation stone and plaque were laid by the Lord Lieutenant of the County of Caernarvonshire, Sir Michael Duff Bar on the 23<sup>rd</sup> January 1963. The *Chronicle* reported that the centre was close to opening in April 1964 and advertisements announcing Town centre shops to let appeared in the 1 May 1964 edition. The Wellfield Centre contained 53 shop units, a supermarket and

a store along with 10,000 feet of office space, underground car parks for 91 cars, underground delivery roads and bays and a petrol station. The central shopping area consisted of an open courtyard in an attempt to emulate modern European cities. The cost of the development was about £600,000 and was described in the *Chronicle* as “a shoppers paradise” that was “designed with the modern housewife in mind”.

Reports in 1970 during a change of management of the centre to a local firm, Jones and Beardmore, were not so optimistic. The store and 34 of the units remained empty. A photograph shows many units still closed off with wooden slats. The situation was never completely resolved and many units remained empty until the 1980s. Shops present in the early stages of the Wellfield development included a Tesco supermarket, a large bookshop (Booklands), along with shops supplying musical instruments, records, fruit and vegetables and soft furnishings. A public house was set up at the end of the courtyard. The centre was partially refurbished in 1984 with the addition of a covered mall and a new entrance and lifts from Garth Road. An ambitious plan to roof the courtyard and add extra units was put before the planning committee in June 85 but the development company pulled out in response to plans to build two major new supermarkets in Bangor. The 1984 refurbishments heralded a slight upturn in the fortunes of the centre with the new covered mall attracting new retailers. Many units remained empty, however, and the building of the new Deiniol Centre and out of town supermarkets shortly after the refurbishments ensured that no further development would take place. In the latter years after most of the major concerns moved elsewhere (Tesco and Bookland had both left well before the refurbishment) most of the smaller units were taken up by local businesses and the centre could be seen to be providing significant niche accommodation for the smaller trader. The centre never fulfilled its original promise as a shopper’s paradise, perhaps as a result of the lack of tenants in the early years or maybe the allure of an open air European style piazza was not so great in rainy North Wales. The Wellfield Centre is currently almost empty and is scheduled for demolition in November 2005.

### **3.2 Description of the Building**

The Wellfield Centre was built on a sloping site on the south-west side of the wide valley that holds the city of Bangor. The site was formerly occupied by the Masonic Hall, Wellfield House and another house called Brynhyfrydd (see assessment report, Page 2003 for further details). The Woolworths store dating from 1939 and fronting on to the High Street was retained. The new shopping centre was built on four levels to accommodate the changes in ground level. The basic construction consists of a series of piers and reinforced concrete slabs. The external elevations are principally of brick. The internal walls are not generally load-bearing. This has allowed a fair amount of remodelling of the retail units, loading bays and stores over the lifetime of the centre by the simple method of either adding or removing walls between the concrete piers. External access was via stairs from Garth Road along with three ramps, one from the High Street, one from the top of Garth Road facing the town clock and one from close to the car park entrance. The first two ramps provided direct access to the fourth level, the latter to the level three courtyard.

The lowest level contains a car park and goods entrance. The goods entrance leads to a service road that slopes up to the second level following the original ground level. Stores and delivery bays stand beside the service road. A service road also runs externally along the north-eastern side of the centre serving further stores, delivery bays, and garages. The entrance to the both the lower and upper car park (via a ramp) is in the northern corner of the building. A petrol station formerly stood close to the car park entrance.

The second storey is taken up on the north-west by a further level of car parking. Stairs lead from the car park to the lower shopping level. The original stairs run from both the service road and the car park on the eastern side, a further set of stairs was added to join up with the end of the new mall in 1984. The service road continues from level 1 to run under the south-eastern side of the centre (Plate 1) before exiting and joining the external service road to the north-east. This road is again flanked by loading bays and stores. This was seen as an essential and somewhat revolutionary feature of the shopping centre in 1964. In contrast to the High Street shops, the customers were totally separated from delivery lorries and traffic. The second level also contains much of the infrastructure of the centre including air extraction ducting and an electricity substation. The lower level of the former public house also appears to have been adjacent to the original access stairs. A series of retail units one of which currently houses the Police Station run alongside Garth Road (Plate 2). The area around the

corner of the service road was significantly remodelled in 1984 with the addition of larger loading bays and platforms.

The third level storey contains most of the retail units and is roughly at the same level as the High Street and the top of Garth Road. Retail units fronting on to the High Street stand to either side of the earlier Woolworths building along with a ramp leading to the fourth level (Plate 3). An ornate steel arch was constructed over the entrance to the ramp as part of the 1984 refurbishments. The central open courtyard of the Wellfield Centre is surrounded on all sides by retail units (Plate 4). The pre-1984 refurbishment plans show that this was originally divided up into 20 small units with a larger unit on the north-western side. A feature of the original design was a tall, four-sided advertisement hoarding standing in the courtyard (Fig. 1c). This was removed during the 1980s. A concrete ramp joins the third and fourth levels thus providing a link with the High Street. Alternative access was either via stairs from Garth Road or stairs from the car park below. Public toilets were also on this level.

Significant changes were made in 1984. A new covered mall was constructed running from the top of Garth Road to the central courtyard. The precipitous ramp leading to the fourth level was demolished and lifts were installed leading from lower down Garth Road to all levels of the centre. The foundation stone is now in the wall of the lower foyer leading to the lifts and stairs. The new entrances and mall also entailed extending the main body of the Wellfield Centre out into Garth Road by several metres. The new building was faced with red brick (Plate 5). Several of the smaller retail units in the courtyard were knocked into larger units around this time and additional stairs were added leading to the car park. A later addition to the courtyard in the later 1990s was an extended frontage on the north-eastern side housing a new B'wise shop. The most recent occupiers of the various units are indicated on the photographic location plans.

The fourth level consists of a mixture of retail units and offices. The principal office space is in Wellfield House on the north-eastern side of the centre and in Stevenson House in the western corner. Both comprise two floors of offices. The North Wales Chronicle was based in Wellfield house for many years. The retail space on this level consist of two large units on the south-western side that formerly housed the Tesco supermarket and latterly were remodelled to house Argos and a succession of discount stores. The rest of the units, labelled the Wellfield Arcade, have largely retained their original character as a series of small shops. These run along the top of the balcony on the south-east of the courtyard and down the ramp to the High Street (Plate 6). A covered bridge across the level 2 service road also provided a link from this level to the upper storey of the Woolworths store. This fell out of use in the mid-1990s but was retained as an emergency exit.

#### 4. FURTHER WORK

This report completes the first phase of the archaeological mitigation (building recording). The next phase will entail a programme of excavation following the demolition of the centre

#### 5. REFERENCES

Page N 2003, *Bangor Town Centre Redevelopment, Archaeological Desk Based Assessment*. Cambria Archaeology report 2003/126  
*North Wales Chronicle*, Jan 1963, April 1964, June 1964, May 1970, September 1984

## Appendix 1 Catalogue of photographs on CD

| Photo Record number | Date of photograph | Description   | Facing | Building Level |
|---------------------|--------------------|---|--------|----------------|
| G1880-001           | 17/08/2005         | Goods entrance  | S      | 1              |
| G1880-002           | 17/08/2005         | Parking bay and stairs to level 2 from service road                             | W      | 1              |
| G1880-003           | 17/08/2005         | Service road from close to goods  | SW     | 1              |
| G1880-004           | 17/08/2005         | Upper part of service road beneath Woolworths link entrance                     | NE     | 2              |
| G1880-005           | 17/08/2005         | Upper part of service road beneath Woolworths link showing phase 2 loading bays | NE     | 2              |
| G1880-006           | 17/08/2005         | Phase 2 loading bays etc SW side  | SE     | 2              |
| G1880-007           | 17/08/2005         | Electricity sub-station   | W      | 2              |
| G1880-008           | 17/08/2005         | Electricity sub-station and phase two blocking wall at rear of Farmfoods unit.  | NW     | 2              |
| G1880-009           | 17/08/2005         | Offices to SW of Farmfoods unit   | SE     | 2              |
| G1880-010           | 17/08/2005         | Phase 2 loading bays and modified stores SW side                                | SW     | 2              |
| G1880-011           | 17/08/2005         | Woolworths link and level 2 stores, oblique view of SE                          | N      | 2              |
| G1880-012           | 17/08/2005         | Goods entrance and service road, NE end   | SW     | 2              |
| G1880-013           | 17/08/2005         | Stairs from service road to Level 3 shopping area                               | NW     | 2              |
| G1880-014           | 17/08/2005         | Boarded up lower floor of former public house                                   | N      | 2              |
| G1880-015           | 17/08/2005         | Upper car park to service road and shops link                                   | SE     | 2              |
| G1880-016           | 17/08/2005         | Upper car park general view   | SW     | 2              |
| G1880-017           | 17/08/2005         | Upper car park general view   | SW     | 2              |
| G1880-018           | 17/08/2005         | Upper car park general view   | W      | 2              |
| G1880-019           | 17/08/2005         | Upper car park general view, ramp to lower level                                | NW     | 2              |
| G1880-020           | 17/08/2005         | Upper car park, payment machine   | SW     | 2              |
| G1880-021           | 17/08/2005         | Upper car park, stairs to level 3   | SE     | 2              |
| G1880-022           | 17/08/2005         | Upper car park, stairs to lower car park  | SW     | 2              |
| G1880-023           | 17/08/2005         | Upper car park, NW end and former van rental office                             | NE     | 2              |
| G1880-024           | 17/08/2005         | Lower car park, general view  | SSW    | 1              |
| G1880-025           | 17/08/2005         | Lower car park, stairs to upper car park  | SSW    | 1              |

| <b>Photo Record number</b> | <b>Date of photograph</b> | <b>Description</b>  | <b>Facing</b> | <b>Building Level</b> |
|----------------------------|---------------------------|---|---------------|-----------------------|
| G1880-026                  | 17/08/2005                | Lower car park, general view                              | E             | 1                     |
| G1880-027                  | 17/08/2005                | Car park entrance   | SE            | 1                     |
| G1880-028                  | 17/08/2005                | Level 3 mall general view                                 | N             | 3                     |
| G1880-029                  | 17/08/2005                | Phase 2 mall entrance from high street                    | NW            | 3                     |
| G1880-030                  | 17/08/2005                | Phase 2 mall general view                                 | NNW           | 3                     |
| G1880-031                  | 17/08/2005                | Phase 2 mall general view                                 | NNW           | 3                     |
| G1880-032                  | 17/08/2005                | Former Bevans store interior                              | N             | 3                     |
| G1880-033                  | 17/08/2005                | Former Bevans store interior                              | NE            | 3                     |
| G1880-034                  | 18/08/2005                | Central shopping precinct, NE elevation                   | SW            | 3                     |
| G1880-035                  | 18/08/2005                | Central shopping precinct, SE elevation part 1 of 3       | SE            | 3                     |
| G1880-036                  | 18/08/2005                | Central shopping precinct, SE elevation part 2 of 3       | SE            | 3                     |
| G1880-037                  | 18/08/2005                | Central shopping precinct, SE elevation part 3 of 3       | SE            | 3                     |
| G1880-038                  | 18/08/2005                | Former store interior                                     | S             | 3                     |
| G1880-039                  | 18/08/2005                | Former His and Hers store interior                        | WNW           | 3                     |
| G1880-040                  | 18/08/2005                | Central shopping precinct, SW elevation                   | NE            | 3                     |
| G1880-041                  | 18/08/2005                | Central shopping precinct, NW elevation part 1 of 3       | NW            | 4                     |
| G1880-042                  | 18/08/2005                | Central shopping precinct, NW elevation part 2 of 3       | NW            | 4                     |
| G1880-043                  | 18/08/2005                | Central shopping precinct, NW elevation part 3 of 3       | NW            | 4                     |
| G1880-044                  | 18/08/2005                | Central shopping precinct, general view                   | W             | 4                     |
| G1880-045                  | 18/08/2005                | Central shopping precinct, general view                   | N             | 4                     |
| G1880-046                  | 18/08/2005                | Central shopping precinct, site of former ramp to NW      | NW            | 4                     |
| G1880-047                  | 18/08/2005                | General view of SE side of upper precinct                 | SSW           | 4                     |
| G1880-048                  | 18/08/2005                | View along Wellfield arcade and ramp to High Street       | SE            | 4                     |
| G1880-049                  | 18/08/2005                | View along lower part of ramp to High Street              | SE            | 4                     |
| G1880-050                  | 18/08/2005                | Wellfield house SE elevation                              | NW            | 4                     |
| G1880-051                  | 18/08/2005                | View along Wellfield arcade shops and ramp to High Street | SE            | 4                     |

| <b>Photo Record number</b> | <b>Date of photograph</b> | <b>Description</b>  | <b>Facing</b> | <b>Building Level</b> |
|----------------------------|---------------------------|---|---------------|-----------------------|
| G1880-052                  | 18/08/2005                | View along Wellfield arcade and ramp towards Wellfield House              | WNW           | 4                     |
| G1880-053                  | 18/08/2005                | Stairs between upper and lower precincts in E corner, former public house | SE            | 3                     |
| G1880-054                  | 18/08/2005                | Wellfield House, NW elevation   | SE            | 1                     |
| G1880-055                  | 18/08/2005                | Stevenson House and car park  | SW            | 1                     |
| G1880-056                  | 18/08/2005                | Stevenson House and car park  | S             | 1                     |
| G1880-057                  | 18/08/2005                | Car Park, NE elevation  | SW            | 1                     |
| G1880-058                  | 18/08/2005                | Wellfield House NE elevation oblique view                                 | WNW           | 1                     |
| G1880-059                  | 18/08/2005                | Stores below Wellfield house  | WSW           | 1                     |
| G1880-060                  | 18/08/2005                | Wellfield House NE elevation oblique view                                 | WNW           | 2                     |
| G1880-061                  | 18/08/2005                | Garages below Wellfield Arcade and ramp area                              | SE            | 2                     |
| G1880-062                  | 18/08/2005                | General view of Stevenson Hose and frontage to Garth Road                 | ESE           | 2                     |
| G1880-063                  | 19/08/2005                | Phase 2 Wellfield frontage to Garth Road                                  | NE            | 3                     |
| G1880-064                  | 19/08/2005                | Phase 2 Wellfield entrance, general and Garth Road frontage               | NNW           | 3                     |
| G1880-065                  | 19/08/2005                | Phase 2 Wellfield entrance  | N             | 3                     |
| G1880-066                  | 19/08/2005                | Phase 2 Wellfield entrance  | NW            | 3                     |
| G1880-067                  | 19/08/2005                | Elevation to High Street (SE) 1 of  | NW            | 3                     |
| G1880-068                  | 19/08/2005                | Elevation to High Street (SE)   | W             | 3                     |
| G1880-069                  | 19/08/2005                | Elevation to High Street (SE) 2 of  | NW            | 3                     |
| G1880-070                  | 19/08/2005                | Elevation to High Street (SE) 3 of  | NW            | 3                     |
| G1880-071                  | 19/08/2005                | Elevation to High Street (SE) 4 of  | NW            | 3                     |
| G1880-072                  | 19/08/2005                | Elevation to High Street (SE)   | N             | 3                     |
| G1880-073                  | 19/08/2005                | Elevation to Garth Road (SW) 1  | ENE           | 2                     |
| G1880-074                  | 19/08/2005                | Elevation to Garth Road (SW) 2  | ENE           | 2                     |
| G1880-075                  | 19/08/2005                | Elevation to Garth Road (SW) 3  | ENE           | 2                     |
| G1880-076                  | 19/08/2005                | Elevation to Garth Road (SW) 4  | ENE           | 2                     |
| G1880-077                  | 19/08/2005                | Elevation to Garth Road (SW) 5  | ENE           | 2                     |
| G1880-078                  | 19/08/2005                | Elevation to Garth Road (SW) 6  | ENE           | 2                     |
| G1880-079                  | 19/08/2005                | Elevation to Garth Road (SW) 7 of   | ENE           | 2                     |
| G1880-080                  | 19/08/2005                | Elevation to Garth Road (SW) oblique                                      | SE            | 2                     |



| <b>Photo Record number</b> | <b>Date of photograph</b> | <b>Description</b>  | <b>Facing</b> | <b>Building Level</b> |
|----------------------------|---------------------------|---|---------------|-----------------------|
| G1880-081                  | 19/08/2005                | Elevation to Garth Road (SW) oblique  | ESE           | 2                     |
| G1880-082                  | 19/08/2005                | Central shopping precinct, NE elevation rectified (scanned from negative)                                   | SW            | 3                     |
| G1880-083                  | 19/08/2005                | Central shopping precinct, SE elevation rectified (scanned from negative) 1 of 3                            | NW            | 3                     |
| G1880-084                  | 19/08/2005                | Central shopping precinct, SE elevation rectified (scanned from negative) 2 of 3                            | NW            | 3                     |
| G1880-085                  | 19/08/2005                | Central shopping precinct, SE elevation rectified (scanned from negative) 3 of 3                            | NW            | 3                     |
| G1880-086                  | 19/08/2005                | Central shopping precinct, SW elevation rectified (scanned from negative)                                   | NE            | 3                     |
| G1880-087                  | 19/08/2005                | Central shopping precinct, NW elevation rectified (scanned from negative) 1 of 3                            | SE            | 4                     |
| G1880-088                  | 19/08/2005                | Central shopping precinct, NW elevation rectified (scanned from negative) 1 of 3                            | SE            | 4                     |
| G1880-089                  | 19/08/2005                | Central shopping precinct, NW elevation rectified (scanned from negative) 1 of 3                            | SE            | 4                     |
| G1880-090                  | 19/08/2005                | Wellfield House elevation, rectified (scanned from negative)  | SE            | 1                     |
| G1880-091                  | 19/08/2005                | Stevenson House, NE elevation, rectified (scanned from negative)  | SW            | 1                     |
| G1880-092                  | 19/08/2005                | Stevenson House and car park, NE elevation, rectified (scanned from negative)                               | SW            | 1                     |
| G1880-093                  | 19/08/2005                | Wellfield Centre Phase 1, SW elevation to Garth Road, rectified (scanned from negative) 1 of 5 upper floors | ENE           | 2                     |
| G1880-094                  | 19/08/2005                | Wellfield Centre Phase 1, SW elevation to Garth Road, rectified (scanned from negative) 1 of 5 lower floors | ENE           | 2                     |
| G1880-095                  | 19/08/2005                | Wellfield Centre Phase 1, SW elevation to Garth Road, rectified (scanned from negative) 2 of 5 upper floors | ENE           | 2                     |
| G1880-096                  | 19/08/2005                | Wellfield Centre Phase 1, SW elevation to Garth Road, rectified (scanned from negative) 2 of 5 lower floors | ENE           | 2                     |
| G1880-097                  | 19/08/2005                | Wellfield Centre Phase 1, SW elevation to Garth Road, rectified (scanned from negative) 3 of 5 upper floors | ENE           | 2                     |

| <b>Photo Record number</b> | <b>Date of photograph</b> | <b>Description</b>  | <b>Facing</b> | <b>Building Level</b> |
|----------------------------|---------------------------|---|---------------|-----------------------|
| G1880-098                  | 19/08/2005                | Wellfield Centre Phase 1, SW elevation to Garth Road, rectified (scanned from negative) 3 of 5 lower floors | ENE           | 2                     |
| G1880-099                  | 19/08/2005                | Wellfield Centre Phase 1, SW elevation to Garth Road, rectified (scanned from negative) 4 of 5              | ENE           | 2                     |
| G1880-100                  | 19/08/2005                | Wellfield Centre Phase 1, SW elevation to Garth Road, rectified (scanned from negative) 5 of 5              | ENE           | 2                     |
| G1880-101                  | 19/08/2005                | Wellfield Centre Phase 2, SW elevation to Garth Road, rectified (scanned from negative) 1 of 3              | NE            | 2                     |
| G1880-102                  | 19/08/2005                | Wellfield Centre Phase 2, SW elevation to Garth Road, rectified (scanned from negative) 2 of 3              | NE            | 2                     |
| G1880-103                  | 19/08/2005                | Wellfield Centre Phase 2, SW elevation to Garth Road, rectified (scanned from negative) 3 of 3 lower part   | NE            | 2                     |
| G1880-104                  | 19/08/2005                | Wellfield Centre Phase 2, SW elevation to Garth Road, rectified (scanned from negative) 3 of 3 upper part   | NE            | 2                     |
| G1880-105                  | 19/08/2005                | Wellfield Centre Phase 1, SW corner of Garth Road and High Street, rectified (scanned from                  | NW            | 3                     |
| G1880-106                  | 19/08/2005                | Wellfield Centre Phase 2, SE elevation entrance, rectified (scanned from negative)                          | NW            | 3                     |
| G1880-107                  | 19/08/2005                | Elevation to High Street (SE), rectified (scanned from negative) 1 of 4                                     | NW            | 3                     |
| G1880-108                  | 19/08/2005                | Elevation to High Street (SE), rectified (scanned from negative) 2 of 4                                     | NW            | 3                     |
| G1880-109                  | 19/08/2005                | Elevation to High Street (SE), rectified (scanned from negative) 3 of 4                                     | NW            | 3                     |
| G1880-110                  | 19/08/2005                | Elevation to High Street (SE), rectified (scanned from negative) 4 of 4                                     | NW            | 3                     |

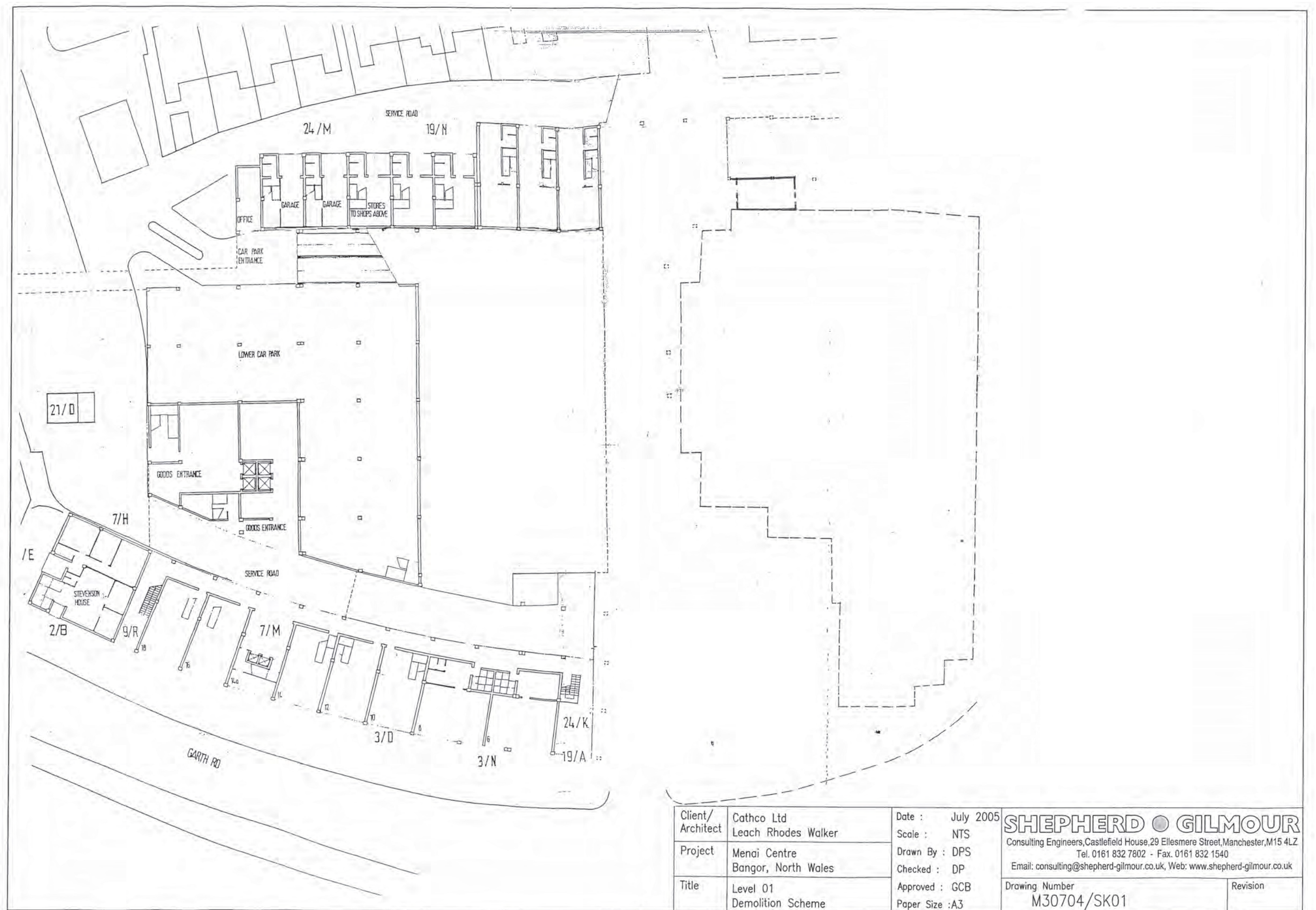


Fig. 1 Architect's plan (not to scale) originating from the early 1980s showing Wellfield Centre, Level 1



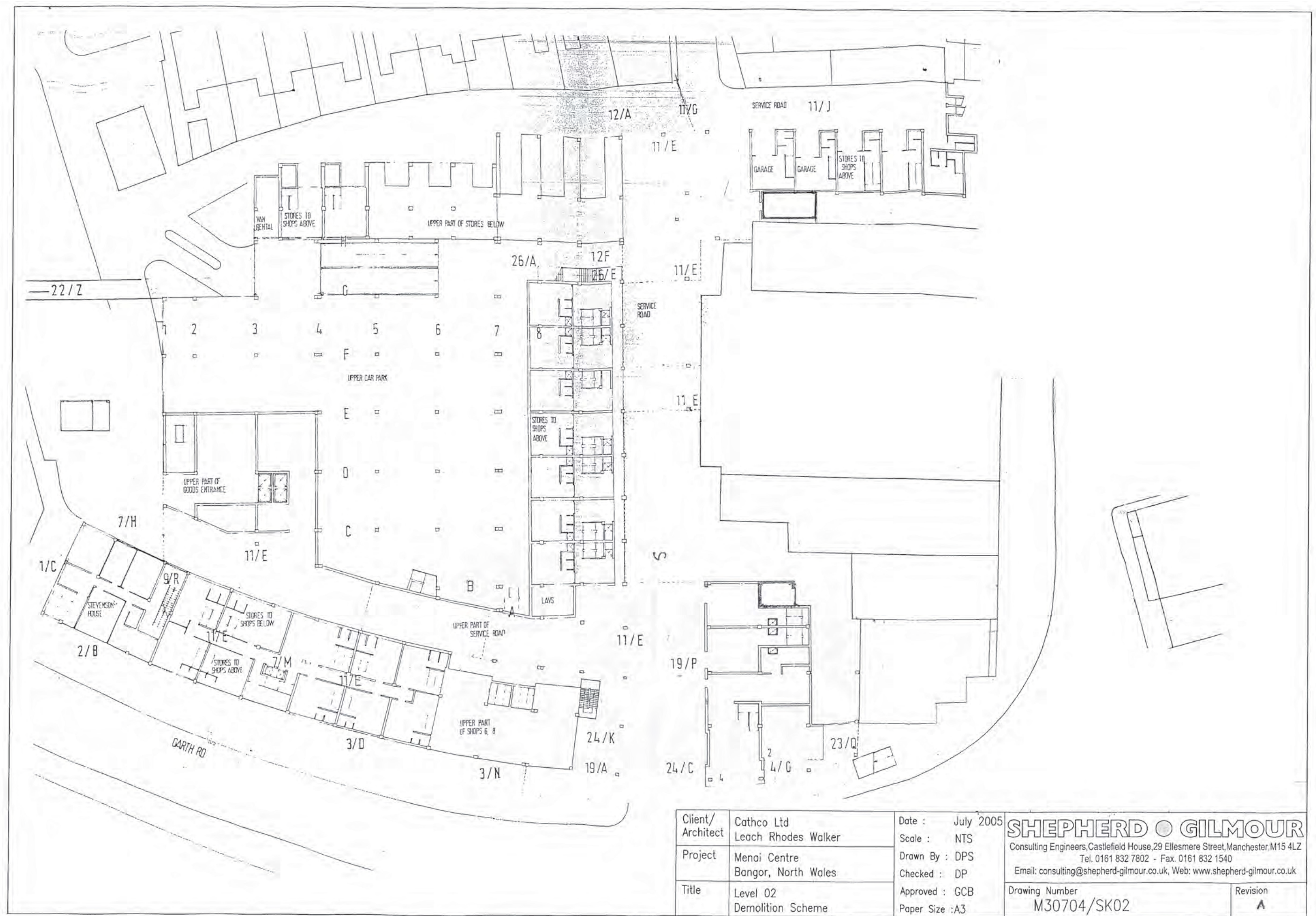


Fig. 2 Architect's plan (not to scale) originating from the early 1980s showing Wellfield Centre, Level 2



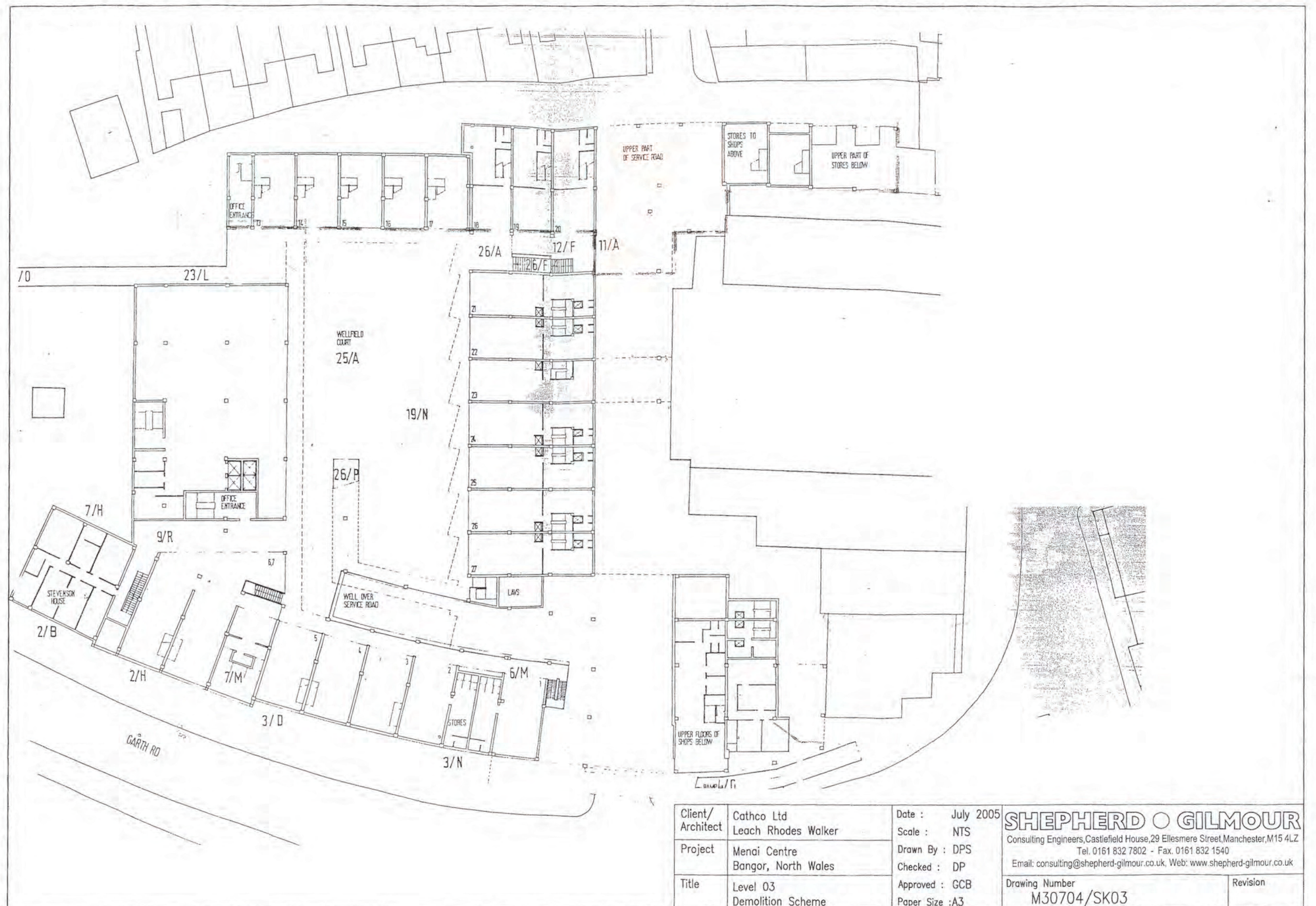


Fig. 3 Architect's plan (not to scale) originating from the early 1980s showing Wellfield Centre, Level 3



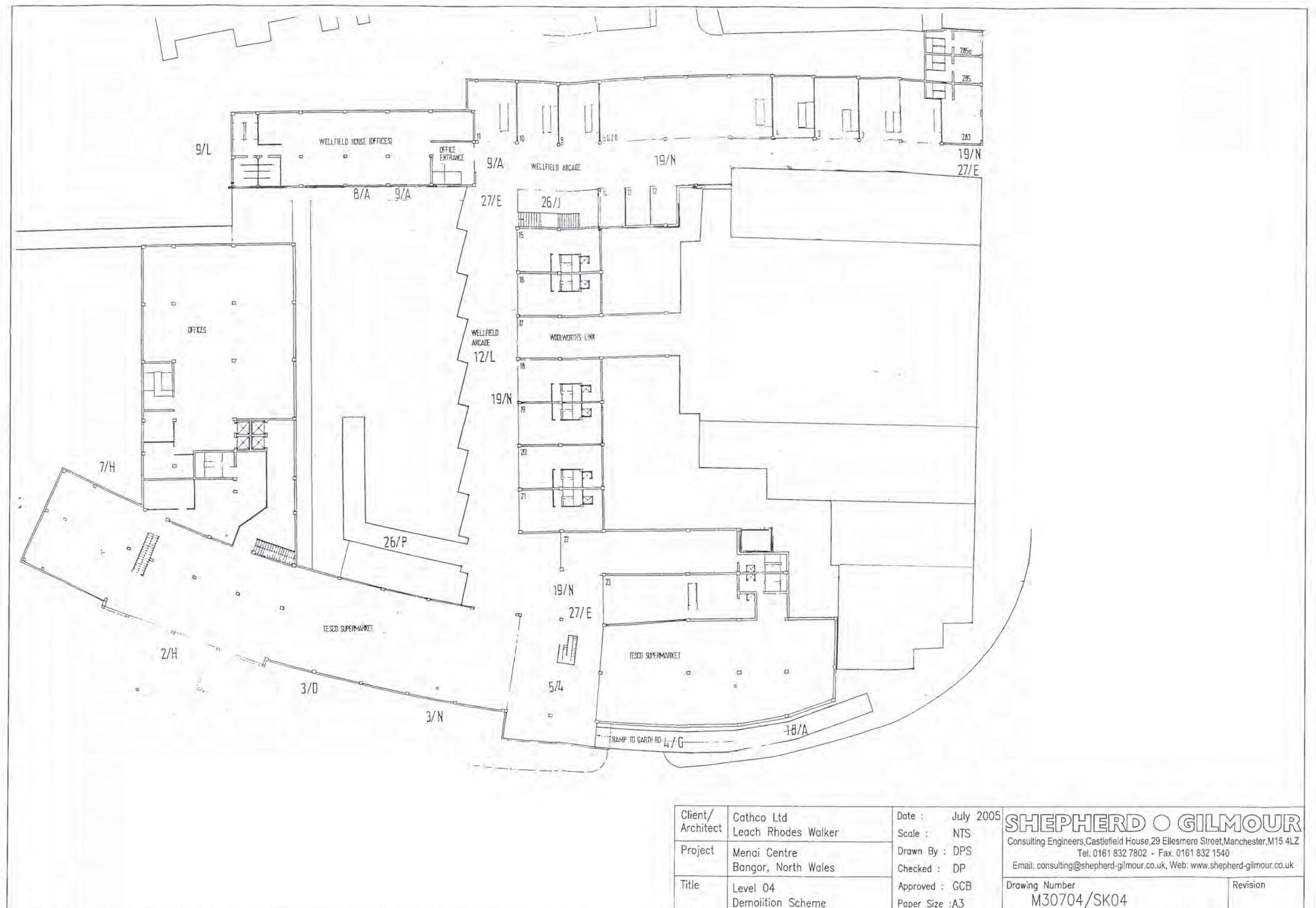


Fig. 4 Architect's plan (not to scale) originating from the early 1980s showing Wellfield Centre, Level 4



Fig 5 WELLFIELD SHOPPING CENTRE, BANGOR

Plan and Location of Photographs (level 1)

Edited from Shepherd Gilmour Drawing M30704/SK01  
Scale: NTS

KEY

Phase 2 building

Photograph taken from / facing

Direction of photograph taken  
from a point beyond the edge of the plan

Photo record number (G1880-XXX)



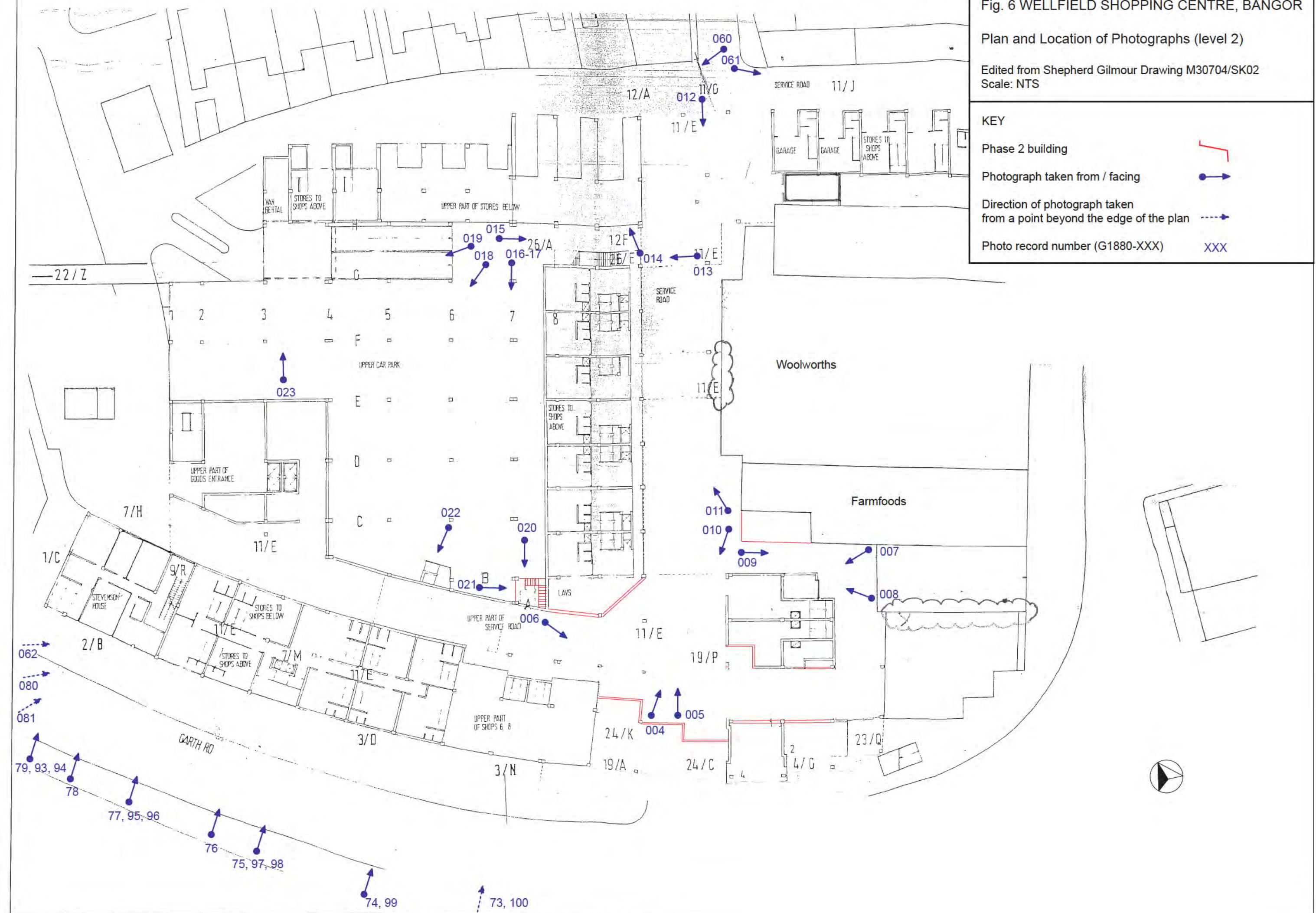
XXX



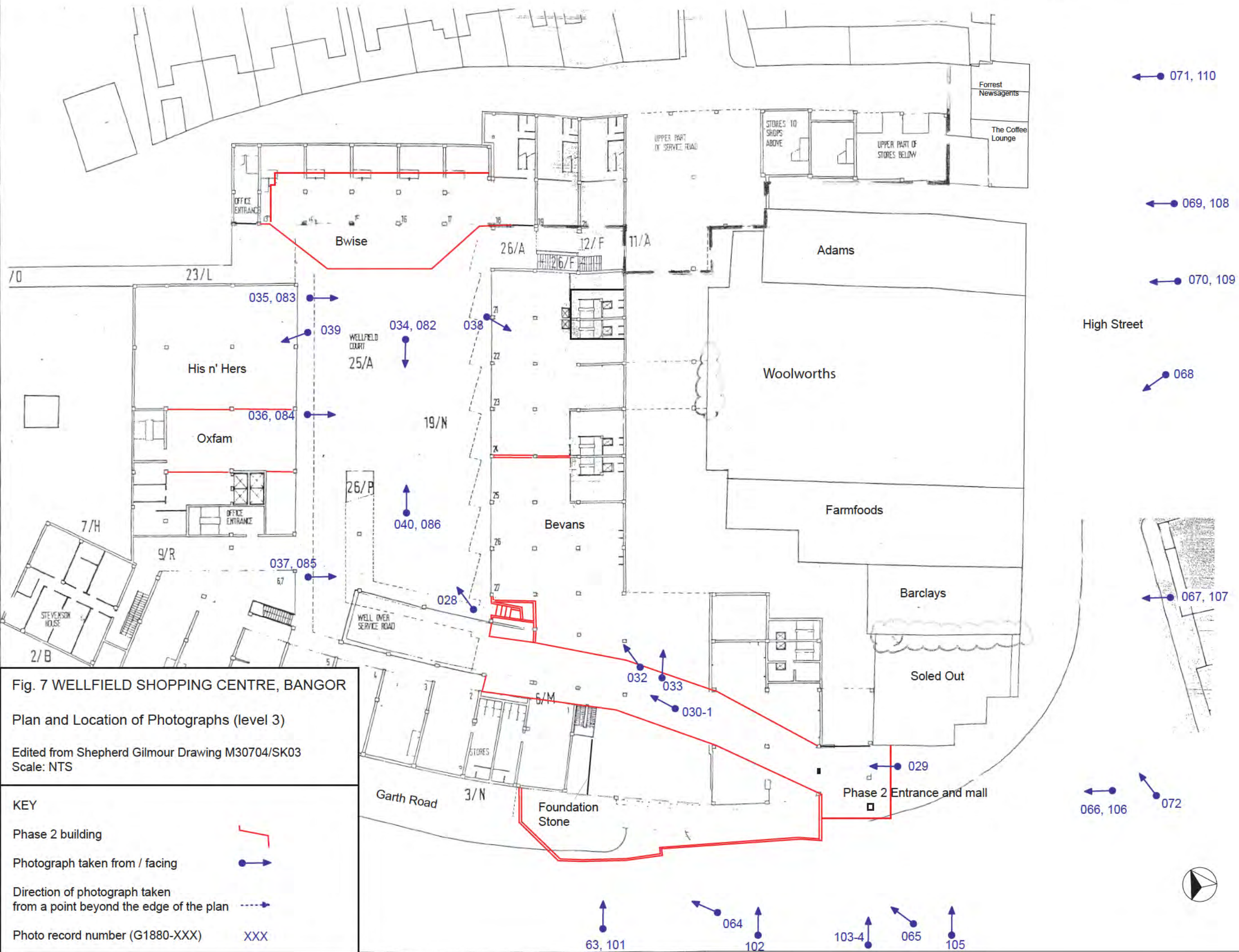


Edited from Shepherd Gilmour Drawing M30704/SK02  
Scale: NTS

XXX











(a)

## TOWN CENTRE SHOPS TO LET AT BANGOR IN THE WELLFIELD SHOPPING CENTRE

This new Centre provides:  
**TRAFFIC FREE SHOPPING IN A PEDESTRIAN PRECINCT  
IN THE HEART OF THE TOWN ADJOINING WOOL-  
WORTHS.**

**FREE COVERED PARKING FOR 90 CARS, WITH IMMEDIATE  
ACCESS TO THE SHOPS.**

**INDIVIDUAL REAR LOADING ACCESS TO EACH SHOP.**

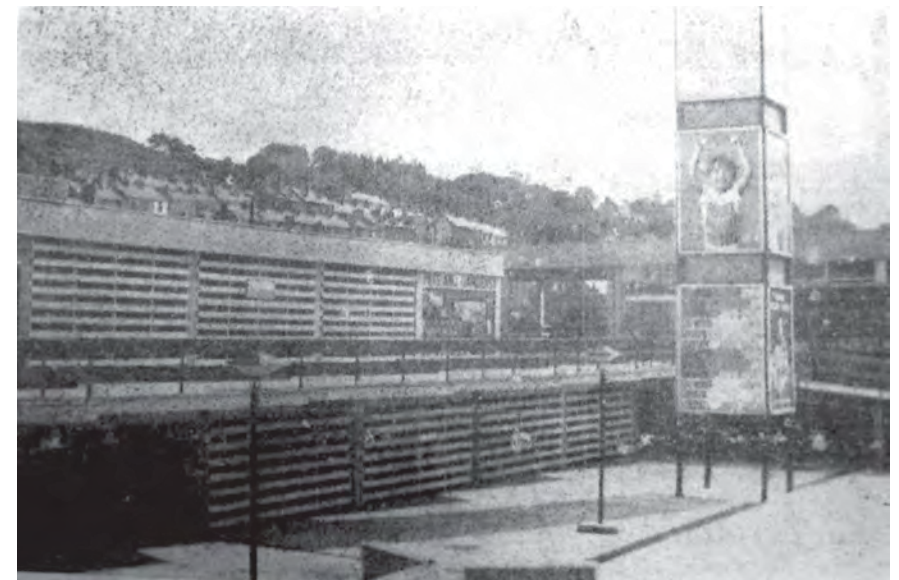
Details from:  
**LLEW. D. JONES & DAVIES, F.A.I.,**  
Chartered Auctioneers and Estate Agents,  
125, HIGH STREET, BANGOR. Tel.: Bangor 2725.

MENAI BRIDGE | No. 9, ALOTAN CRESCENT.

(b)



(c)



(d)

Fig. 7 Reports from the North Wales Chronicle on the progress of the Wellfield Centre (a) April 1964, nearing completion (b) May 1964 (c) Bookland's Shop July 1964 (d) Empty Units 1970





Fig. 8 WELLFIELD SHOPPING CENTRE, BANGOR

Plan and Location of Photographs (level 4)

Edited from Shepherd Gilmour Drawing M30704/SK04  
Scale: NTS

KEY

Phase 2 building

Photograph taken from / facing

Direction of photograph taken  
from a point beyond the edge of the plan

Photo record number (G1880-XXX)



XXX





Plate 1. The SE side of the Wellfield Centre showing service road, and Woolworths link



Plate 2. The Wellfield Centre from the top of Garth Road





Plate 3. The Wellfield Centre from the High Street



Plate 4. The central courtyard





Plate 5. The 1984 extension housing the new mall and lifts



Plate 6. The Wellfield Arcade alongside the ramp leading to the High Street



YMDDIRIEDOLAETH  
ARCHAEOLEGOL  
GWYNEDD



GWYNEDD  
ARCHAEOLOGICAL  
TRUST

Craig Beuno, Ffordd y Garth, Bangor, Gwynedd. LL57 2RT  
Ffon: 01248 352535. Ffacs: 01248 370925. email: [gat@heneb.co.uk](mailto:gat@heneb.co.uk)