

---

---

**LLYS RHOSYR, NEWBOROUGH, ANGLESEY,  
HERITAGE PROJECT**

***SCHEDULED ANCIENT MONUMENT A129***

**ARCHAEOLOGICAL RECORDING, MONITORING  
AND CONSOLIDATION: CONSERVATION REPORT**

---

---

**GAT Project No. G1504**

**Report No. 377**

**Prepared for The Newborough Heritage Trust,  
Ynys Mon Council  
and Cadw: Welsh Historic Monuments**

by George Smith

September 2000

**Gwynedd Archaeological Trust  
Ymddiriedolaeth Archaeolegol Gwynedd**



**LLYS RHOSYR, NEWBOROUGH, ANGLESEY,  
HERITAGE PROJECT**

***SCHEDULED ANCIENT MONUMENT A129***

**ARCHAEOLOGICAL RECORDING AND  
CONSOLIDATION, CONSERVATION REPORT**

**GAT PROJECT NO. G1504**

**REPORT NO. 377**

**Prepared for The Newborough Heritage Trust,  
Ynys Mon Council  
and Cadw: Welsh Historic Monuments**

by George Smith

September 2000

**Gwynedd Archaeological Trust  
Ymddiriedolaeth Archaeolegol Gwynedd**



**LLYS RHOSYR, NEWBOROUGH, ANGLESEY, HERITAGE PROJECT  
SCHEDULED ANCIENT MONUMENT A129**

**ARCHAEOLOGICAL RECORDING, MONITORING AND  
CONSOLIDATION REPORT, GAT Report No. 377**

**GAT PROJECT NO. G1504**

## **1. INTRODUCTION**

1.1 Llys Rhosyr consists of the excavated ruins of an important Royal Welsh administrative complex of the 13<sup>th</sup> century and earlier. Masonry consolidation, surface laying and landscaping were carried out in 1998 in order to present the site to the public as part of a scheme to raise awareness of the heritage value of the Newborough area. This project is being carried out by the Newborough Heritage Trust supported by Ynys Mon Council and Cadw.

1.2 Prior to the conservation works, additional archaeological recording was carried out to provide a complete record of the standing structures and to allow control and monitoring of the consolidation and other works. This provides a brief summary of the background, of the archaeological record and of the consolidation and other conservation works. Examples of the conservation record are attached (Appendix 4).

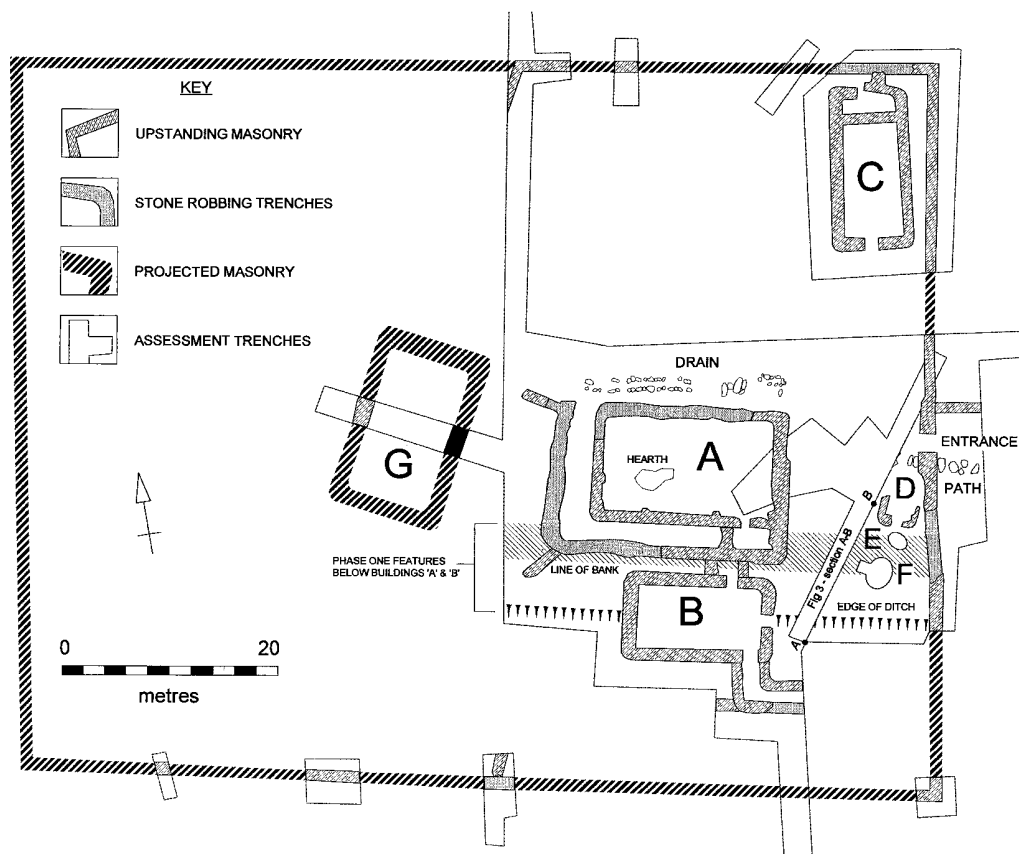
## **2. BACKGROUND**

2.1 Llys Rhosyr consists of the remains of a Royal court of the Welsh kingdom of Gwynedd. It was the *maerdref* or manorial court of the administrative area of the *Commote of Menai*, a large area comprising of the whole south-west portion of Anglesey. The existence of the site was known from documentary evidence, for example a reference to Llywelyn ap Iorwerth signing a charter there in 1237. The actual location of the site, however, was known only from vague antiquarian references and physical remains that were probably part of the site were only positively identified by GAT during small scale trial excavation in 1992. Extensive excavations then followed in 1994, 1995 and 1996 and an area of about 60m by 60m with a complex of buildings was uncovered (Fig. 1a). The whole extent of the known remains was scheduled as an ancient monument in 1997 (Fig. 1b).

Much of these remains were characterised by good preservation and much of the buildings survived to a height of between 0.4m to 0.8m. This good survival was apparently because the ruins of the *llys* that existed after abandonment and robbing at the time of the Edwardian conquest had been buried by up to a metre of blown sand, probably during a historically recorded major sand-blow of 1332.

2.2 Despite the good survival of the structural remains, these were, in fact, quite fragile once uncovered because of their method of construction. Some of the better parts of the walls, particularly that of the east perimeter wall were quite well faced

and stable. Others, however, including much of the buildings were of random block construction, dry laid with a core of clay and small rubble. Once exposed to the elements therefore, the wall core was prone to weathering and movement. In addition, the construction used a variety of stone materials including locally quarried shale, and oddments of glacial cobbles. Some of this stone was of poor quality and liable to split. The fragility of the walls meant that in some cases simply raking out and pointing was not sufficient. The loose top of the core had to be lifted and reset in mortar. In occasional cases where individual top face stones were unstable they also had to be lifted and reset. In one case, Building B, the walls around the east entrance had subsided and were inclined well out of vertical because the building lay over the line of an earlier, infilled ditch. The section of wall on the north side of the doorway collapsed while the recording was still in progress and so was later rebuilt using the pre-consolidation photograph and drawing as a guide. The south side of the doorway was also very unsafe and so was also dismantled and rebuilt.



**Fig. 1a Llys Rhosyr, Newborough: Extent of excavation area and projected outline of the *llys* enclosure.**

### 3. ACKNOWLEDGEMENTS

The friendly co-operation is gratefully acknowledged of Steve Jones of the masonry contractors - Menai Masonry and John Beardsley of the groundwork contractors - Glynllifon Services. Thanks are also due to Neil Johnstone, the director of the previous archaeological work who provided useful comments, helped with the

surveying and provided access to the excavation archive. Cover illustration by Helen Flook.

#### 4. PRELIMINARY CONSERVATION WORK

4.1 The protective layer of black PVC sheet and sandbags that had been left over the site after the previous excavations were removed.

4.2 The site grid, defined by base lines of surveying pegs, was first extended and tied in to more permanent markers along the boundaries of the field because the site grid would be removed during landscaping and it was possible that further excavation might take place in future. The position of these 'permanent' surveying stations - iron pegs, well driven in - is marked on Fig. 4.

4.3 Areas of external flooring, to be laid as slate chippings (Fig. 2, 'A'), were marked out with roadline spray paint.

4.4 The positions of robbed out wall lines and other features, to be defined by edgings of laid stones filled with dark granite chippings (Fig. 2, 'C') were marked out with surveyors pegs and roadline spray paint.

4.5 Photographs and annotated drawings were provided of the culvert at the east of the site because this had subsided since excavation and required reinstatement. The facing stones were identified and numbered to match the annotated drawings to facilitate the reconstruction and consolidation.

#### 5. THE LANDSCAPING, SURFACING AND CONSOLIDATION WORK

The initial landscaping, laying of the membrane, sub-base material and finishing layers was carried out in March-April 1998 with the masonry consolidation itself being carried out over June -July.

Further landscaping and reseeding was carried out in April 1999.

The materials used were according to the specifications agreed at a site meeting (Appendix 3) with one variation that was agreed at a subsequent monitoring visit by the Cadw IAM.

5.1 A permeable membrane of dark, stone-coloured 'Terram' fabric was first laid over all excavated areas.

5.2 A sub-base of broken granite and clay was then laid and compacted with a motorised 'whacker plate'.

5.3 Internal areas (Fig. 2, 'A') were laid with 'Bryncir' gravel screened at half an inch.

5.4 External floors (Fig. 2, 'B') were laid with crushed slate chippings.

5.5 Robbed out walls and other features (Fig. 2, 'C') were marked out with laid stone edgings and filled with 'Gwyndy' dark granite chippings to provide a contrast with the other surfaces. This was a change to the first specifications.

5.6 The remaining areas within the former excavation trenches, to be grassed (Fig. 2, 'D') were laid with sandy soil from the excavation spoil heaps.

5.7 Covering materials were laid to a total depth averaging 200mm but varying as the excavated surface was undulating.

5.8 Materials inside the buildings were brought in by a small rubber-tracked dumper, creating a safe pathway of material as it progressed.

5.9 The soil for the grassed areas and the external landscaping were carried out by wheeled excavator.

5.10 Internal floor finishing layers were brought in by hand and the surfaces were hand-raked.

5.11 One short length of perimeter wall had been robbed to such a depth that it was impossible to create a stable internal surface. This area of wall (Fig. 2, 'E') was rebuilt in a similar style to the rest.

5.12 After completion of the consolidation the areas to be grassed were re-finished and sown with grass seed.

## 6. THE CONSERVATION RECORDING

### 6.1 Pre-consolidation photography

All walls were first marked out in 2m segments, each of which was given a context number and these 158 contexts (Fig. 3) provided the units of the record according to the project design (Appendix 2) Each segment of standing wall face, front and back, was photographed in horizontal view, from a set distance (4m), with 1m ranging rods at 2m intervals, where possible. Oblique views were taken of wall segments that were robbed and survived only in plan. Each segment was photographed in duplicate and in both colour negative and colour transparency.

### 6.2 The drawn record

A stone by stone drawn record was then made of the face of each standing portion of wall at 1:20 scale, where it had not been recorded as part of the original excavation. This produced 17 A3 sheets of drawings: approximately 176m length of newly drawn wall face. The areas of drawn elevations are shown in Fig. 3. A TBM was established, marked by a cross on the centre of the largest horizontal slab of the pathway between Building A and the east perimeter wall (Fig. 3). The TBM was given the nominal height of 50m, approximating to the actual OS datum.

### 6.3 Post-consolidation photography

Following consolidation of the walls a second photographic record was made duplicating the original record to provide a complete 'before and after' record for comparative purposes. In total about 1300 shots were taken in 36 films, comprising duplicates of every shot and as both prints and transparencies.

### 6.3 The conservation record

This consists of 316 A4 sheets, being 158 contexts each with a building record sheet with the drawn elevation and a photo record sheet with before and after photos. These are contained in two lever arch files. Fig. 3 provides a key to the record contexts. Appendix 4 provides copies of examples of the conservation record sheets. The whole conservation record includes many drawings and photographs and is not suitable to reproduce in its entirety. 34 records are included here as examples. One record is included from each main element of each structure, outside and inside face, illustrating the type of structure and its condition before and after consolidation. The copies of the photographs are provided mainly to demonstrate the content of the original record, because the reproductions do not provide adequate detail compared to the original photographs, contained in the archive.

### 6.4 The conservation archive

The archive, consisting of the building record sheets, original drawings, photographs, negatives, transparencies and index sheets is stored at GAT, Craig Beuno, Garth Road, Bangor, LL57 2RT.



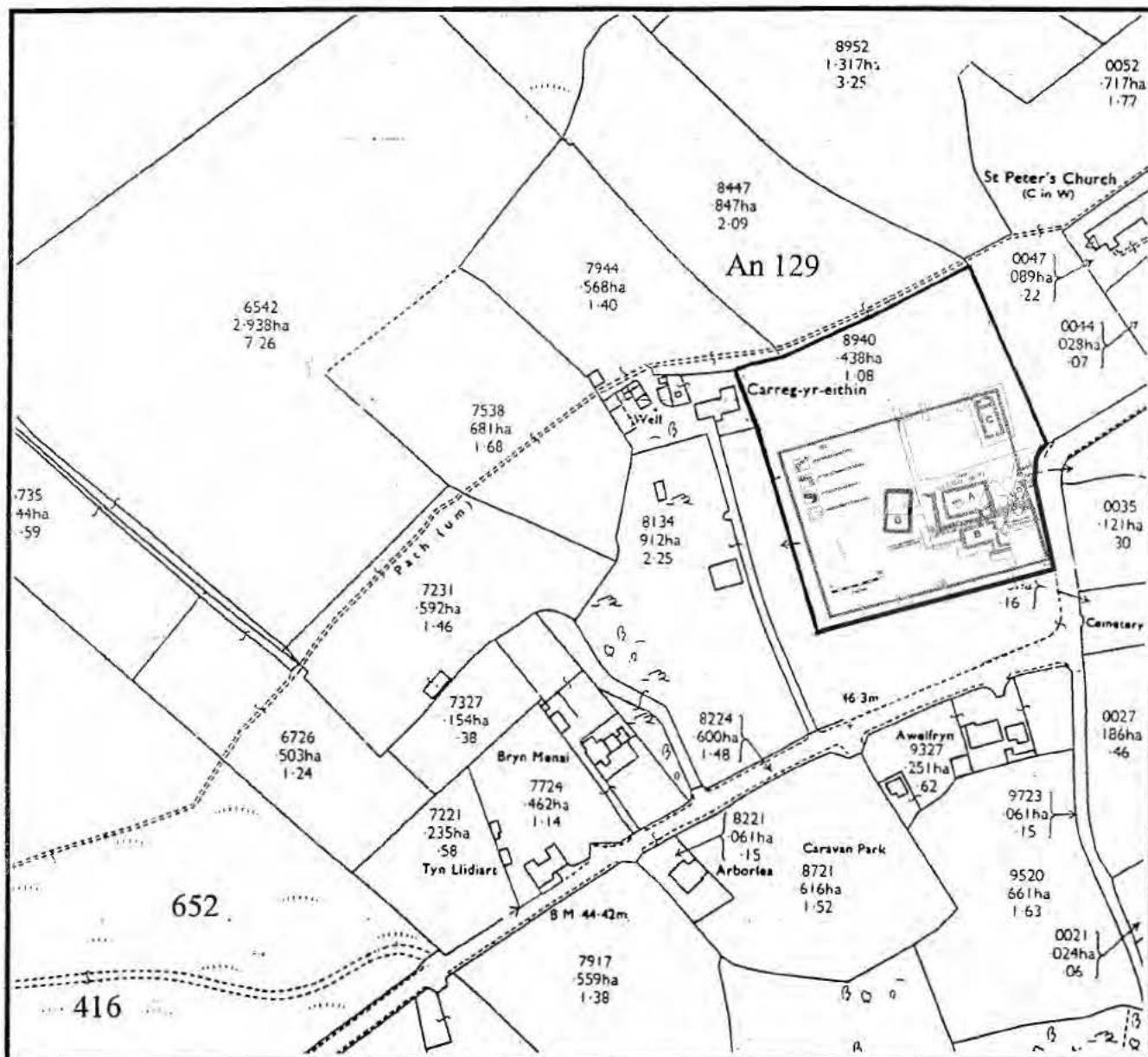
CADW

WELSH HISTORIC MONUMENTS

# Ancient Monuments and Archaeological Areas Act 1979

Llys Rhosyr

An 129 (GWY)



This is the Plan referred to in the Scheduling entry dated

*20 March 1997*

Authorised by the Secretary of State to sign in that behalf

*[Signature]*

File No.

**CAM 1/1/6734**

Extract from OS Sheet No.

**SH 41 65**

Scale

**1:2,500**

**Fig. 1b Llys Rhosyr, Newborough: Protected area in relation to known extent of monument**

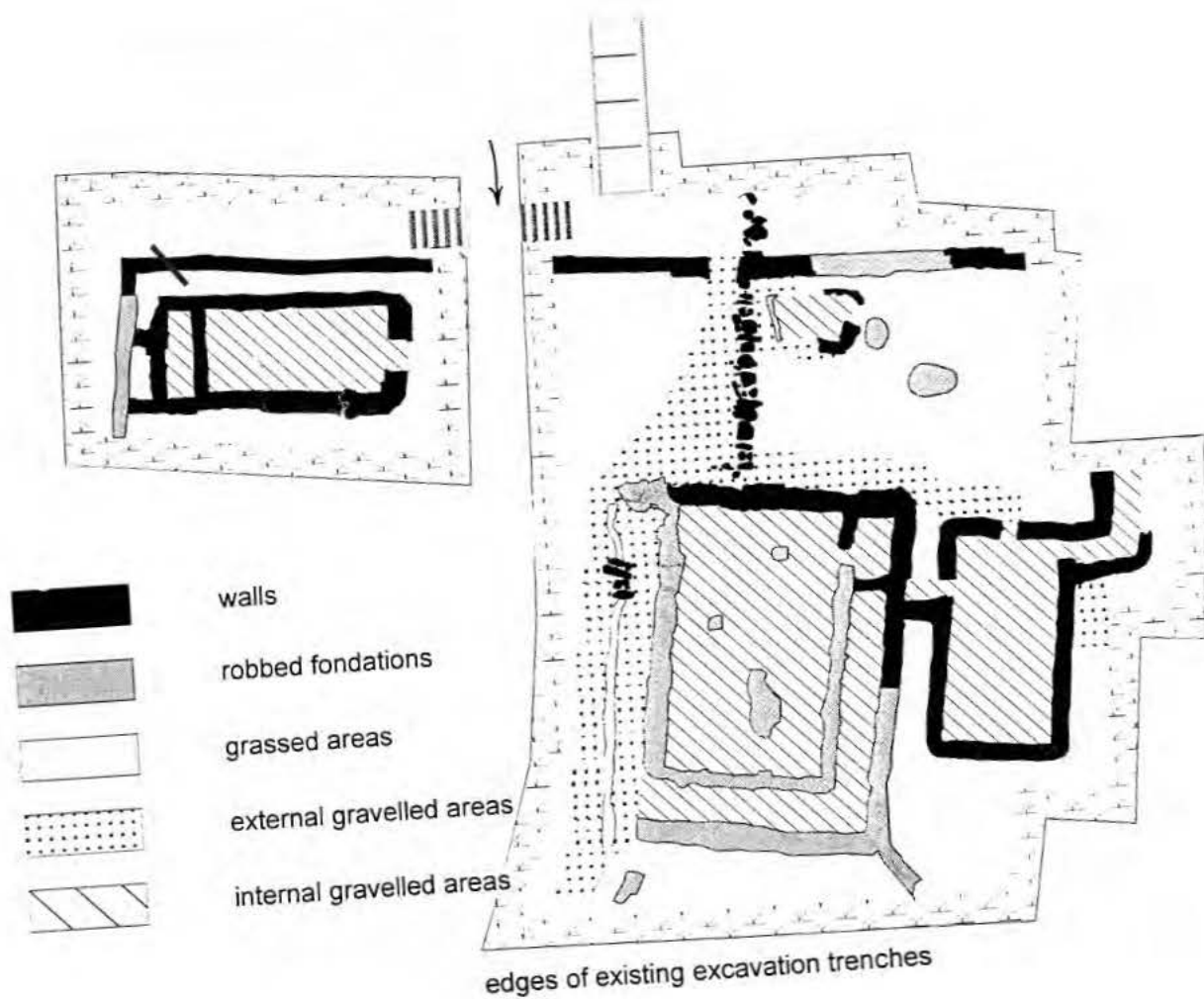


Fig. 2 Llys Rhosyr, Newborough, Anglesey: Location of laid surface areas

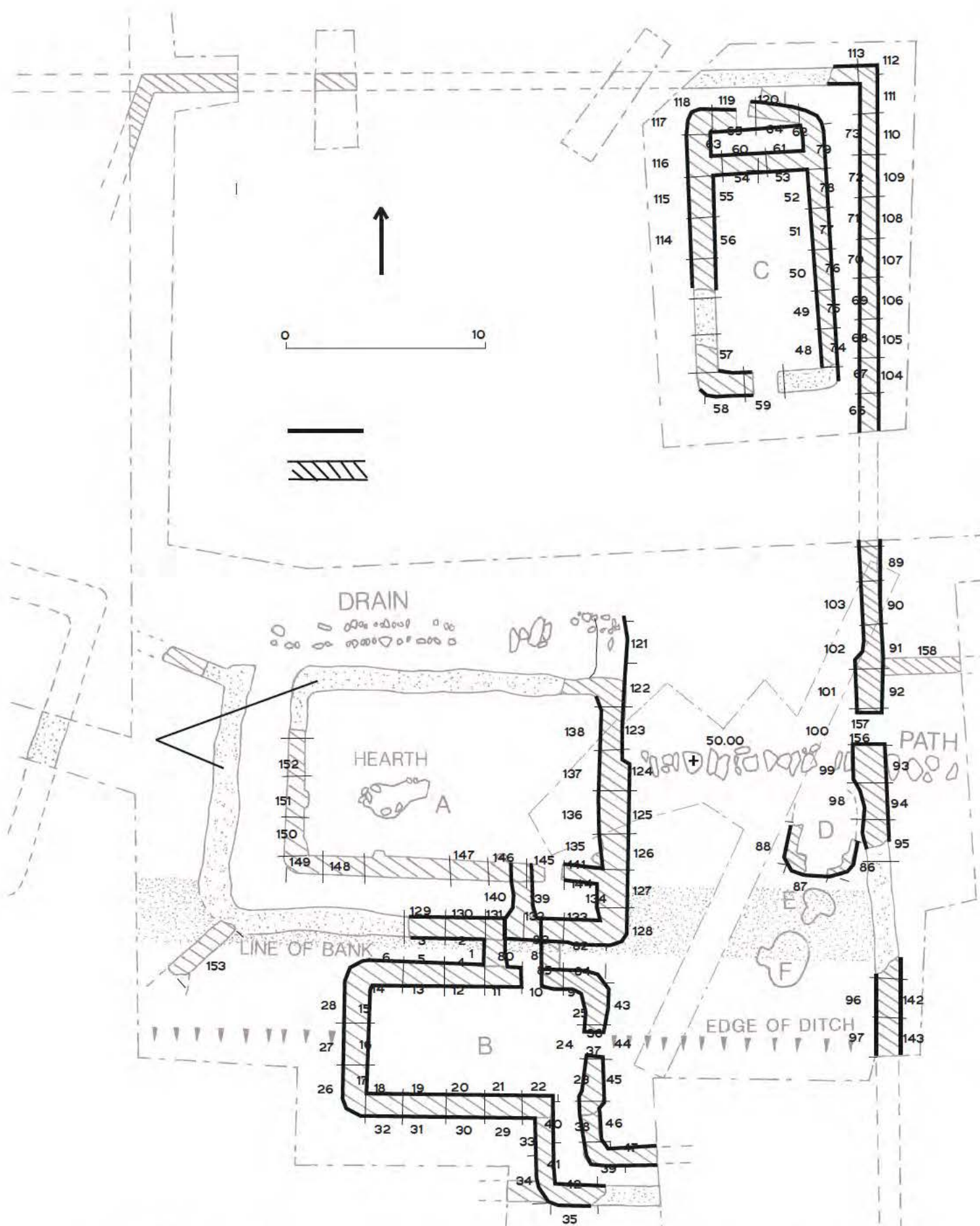
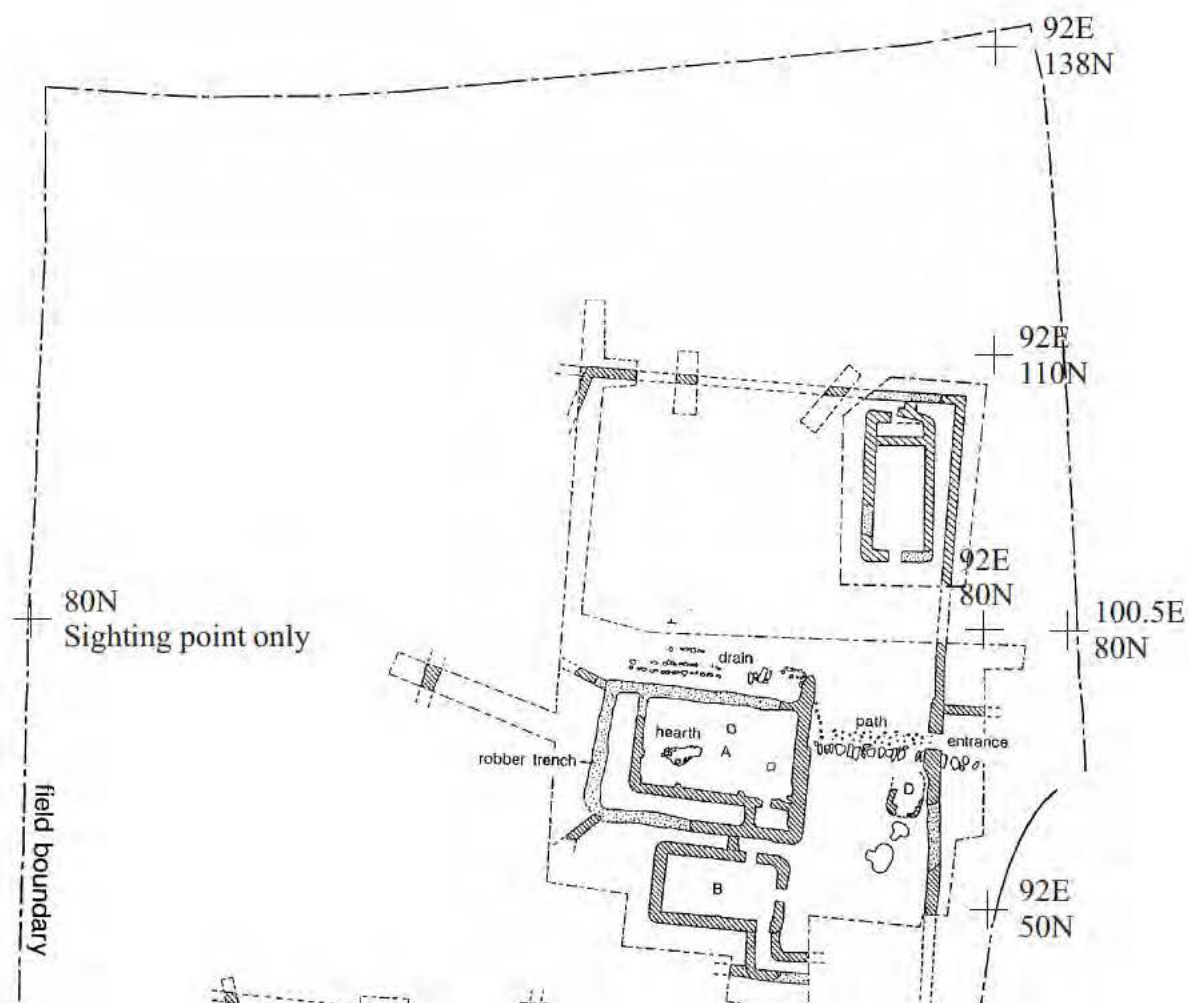



Fig. 3 Llys Rhosyr, Newborough, Anglesey: Location of wall recording context segments 1-158 and of drawn wall elevations (bold line). Illustrated context examples in bold italic.




**Fig. 4 Llys Rhosyr, Newborough, Anglesey: Location of permanent surveying stations**

## Appendix 1 Llys Rhosyr, Newborough: Proposed consolidation methods

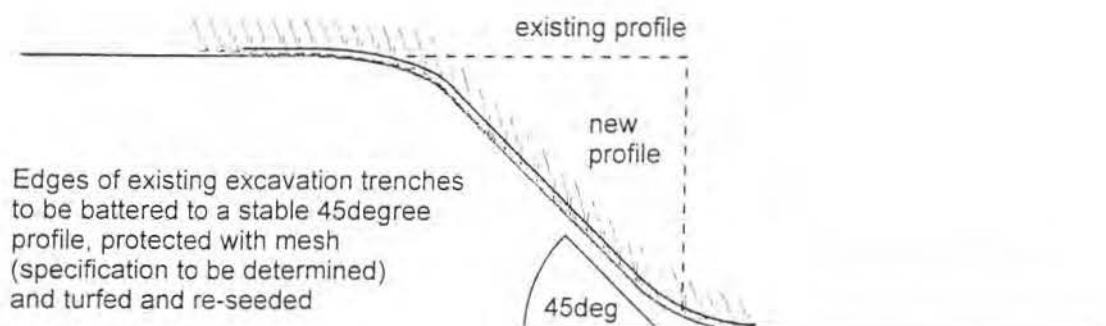
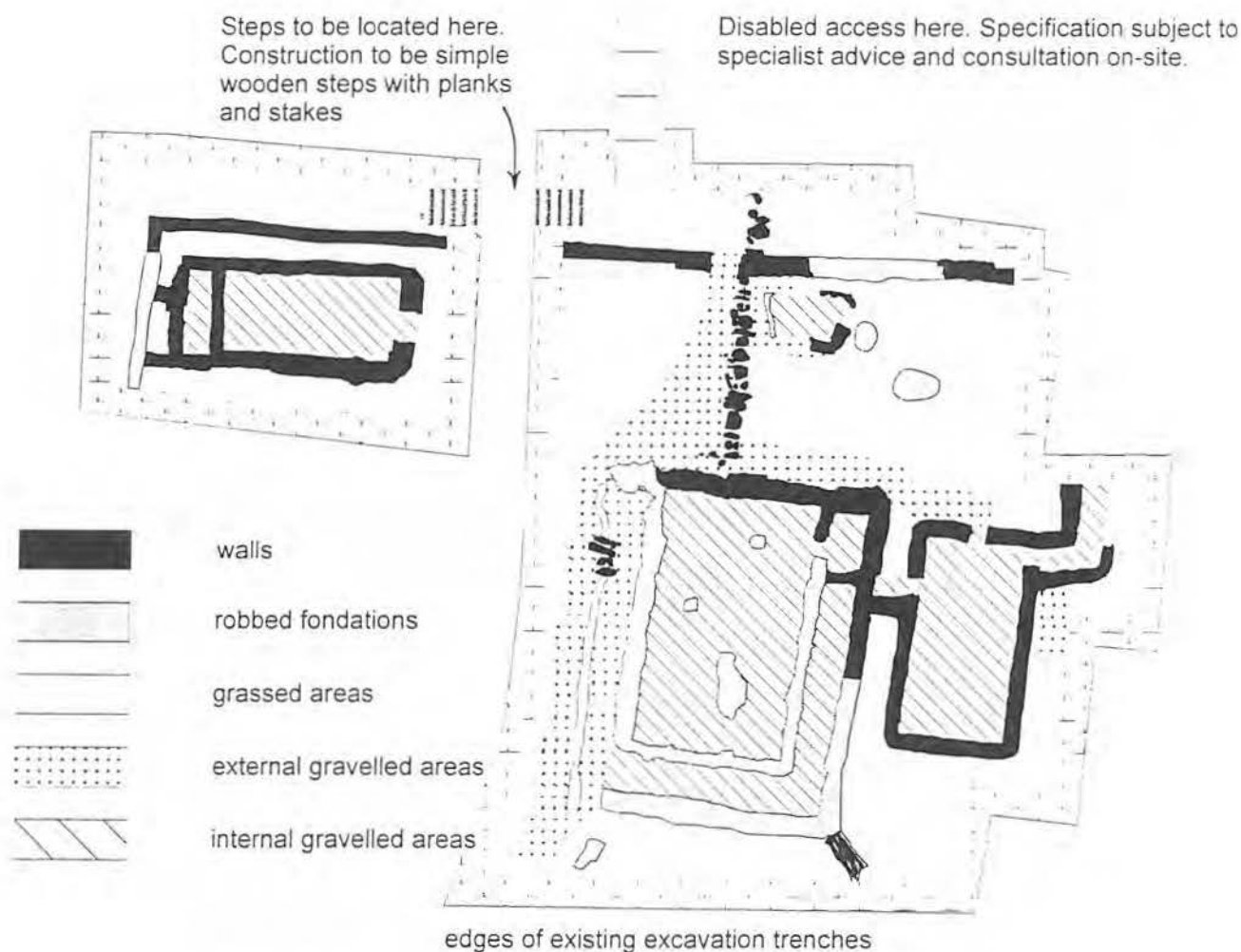
It is proposed that the work of consolidation be undertaken by qualified masons, experienced in work on historic monuments, using the appropriate techniques and materials in accordance with Cadw's *Guidance Notes on the Conservation of Masonry* supplemented by detailed site advice and in liaison with Cadw's conservation architect. —

Masonry features to be consolidated are shown solid on the accompanying plan. 

Features which have been robbed of stone will be marked out on the consolidated surfaces with edge set stones and slabs utilising local stone from the excavation spoilheaps wherever possible.

These are shown with a grey tone on the plan. 

Surfaces will be protected by a permeable membrane, over which a 150mm layer of introduced material will be placed. Surfaces external to the perimeter wall will be grassed. Surfaces within the perimeter wall and external to the buildings will be grassed or provided with a gravel surface as appropriate as indicated on the plan. Surfaces within the buildings will be provided with a contrasting gravel surface or other appropriate material subject to specialist advice.



## **APPENDIX 2**

### **LLYS RHOSYR, NEWBOROUGH, CONSOLIDATION PROGRAMME**

#### **CONSERVATION RECORDING METHODS**

##### **Introduction**

The structures of Llys Rhosyr consist of walls, wall robbing trenches and some isolated features such as hearths and post settings. The consolidation methods have previously been outlined and will be confirmed by discussion on site after preparation of test areas.

##### **Existing record**

All the structures have been planned in detail at 1:20. The majority of the standing wall portions have also been drawn in elevation. There are also various sections and profiles drawn at significant points as well as a written context record, photographs and general synthetic descriptions and interpretations written as part of the publication report. The existing record is therefore good.

##### **Requirements for further site recording in advance of conservation.**

Elevation drawings are needed of all standing walls. The site records will be checked and areas needing drawing will be identified. The only considerable area needing attention is Building C, so it should be possible to continue with conservation work in other areas without hindrance.

##### **Recording during the conservation programme**

- Existing elevations and plans of each wall will be checked and added to if necessary.
- The existing written context record will also be checked and added to if necessary.
- Additional plans/elevations will be made where required, for instance if conservation exposes new details.
- A conservation building record will be made based on standard 2m long segments of wall face, with inner and outer faces recorded separately.
- The wall segments will be numbered within the unique set of site context record numbers.
- The record will consist of a form for each wall segment with a copy of the relevant elevation and with accompanying interpretative text and key to relevant drawn and photographic records. The elevation will be annotated as necessary to provide fresh interpretation, or, for instance, to delineate areas where stones need to be re-set.
- This will be supplemented by photographs showing the same wall segment before and after conservation. The photographs will be taken, where possible, at a standard distance and in a vertical plane with a levelled camera, for ease of comparison and to provide a record which can be used to prepare photogrammetric drawings if necessary. The photographic record will be duplicated in colour prints and transparencies.

### APPENDIX 3

#### NOTE ON SITE MEETING AT LLYS RHOSYR: 19.3.98

**Present:** D Longley, G Smith (GAT)  
S Jones (Menai Masonry)  
M Yates, M Kelly (Cadw)

In accordance with condition 3 of the SMC we inspected samples of work:

- a. Two short sections of walling had been consolidated to show different styles of masonry. Ms Kelly stressed the need to avoid leaving hollows on the wall top and it was agreed that the top stones should be re-bedded in mortar. Occasionally stones may need to be added to ensure satisfactory shed for water, and to avoid leaving larger areas of mortar.

The pointing was recessed about 20mm which was satisfactory and the work was clean and neat.

In the rougher section of walling it was agreed that the pinning stones should be added in order to avoid larger areas of mortar.

The sample work had been completed using a cement mortar which was thought to be too hard. Ms Kelly therefore gave revised specifications for a weaker lime based mortar which should be used, 1:2:9 cement: lime: sand.

It was agreed that the use of builders sand with no additional coarse aggregate was appropriate given that the walls were simply clay bonded. Provided the new mortar was recessed then it should not be visually intrusive.

- b. A short section of ramping was seen. It was agreed that the surface would need further reinforcement using a mesh. Otherwise the example was satisfactory.
- c. An area of floor/ground was also available for inspection. This comprised a permeable membrane (terram) laid over the archaeological deposits and covered by some 10 - 15mm of packed aggregate, possibly Hoggin. On top were samples of surface covering. The rounded gravel from Brincir was favoured, but it was suggested that it should include more dust to help compaction. The basic technique was entirely satisfactory.

It was agreed that the presentation should follow the Cadw convention of using this gravel to indicate interiors of buildings. Turf would cover external areas, however, crushed slate waste was selected as a suitable material to lay amongst the less well defined stone surfaces which would be exposed.

In areas where walls had been robbed it was agreed that the edges should be marked with stones from the site and the area in between filled with gravel as for building interiors.

- d. GS showed an example of the recording and conservation record - based on the techniques developed at Tre'r Ceiri. This was entirely satisfactory.
  - e. The work programme was discussed and agreed:
    - Phase I Clearance of temporary protection materials.  
Relocation of survey pegs.
    - Phase II Laying of permeable membrane and surfaces.
    - Phase III Additional recording as required.  
Consolidation of masonry.
    - Phase IV Presentation details to be determined.
- This was accepted.

M YATES  
24.3.98

**APPENDIX 4**  
**EXAMPLES OF BUILDING RECORDS**



SITE CODE G1504	SITE GRID REF NGR: Y/N	SITE SUB-DIV	CONTEXT NUMBER 1
CATEGORY/TYPE WALL SEQ.			
BUILDING B	WALL NO.	INNER <u>OUTER</u>	

PHOTOGRAPHS - Film No./ Frame No.  
BEFORE CONSERVATION

1-1 (From 2m)



PHOTOGRAPHS - Film No./ Frame No.  
AFTER CONSERVATION

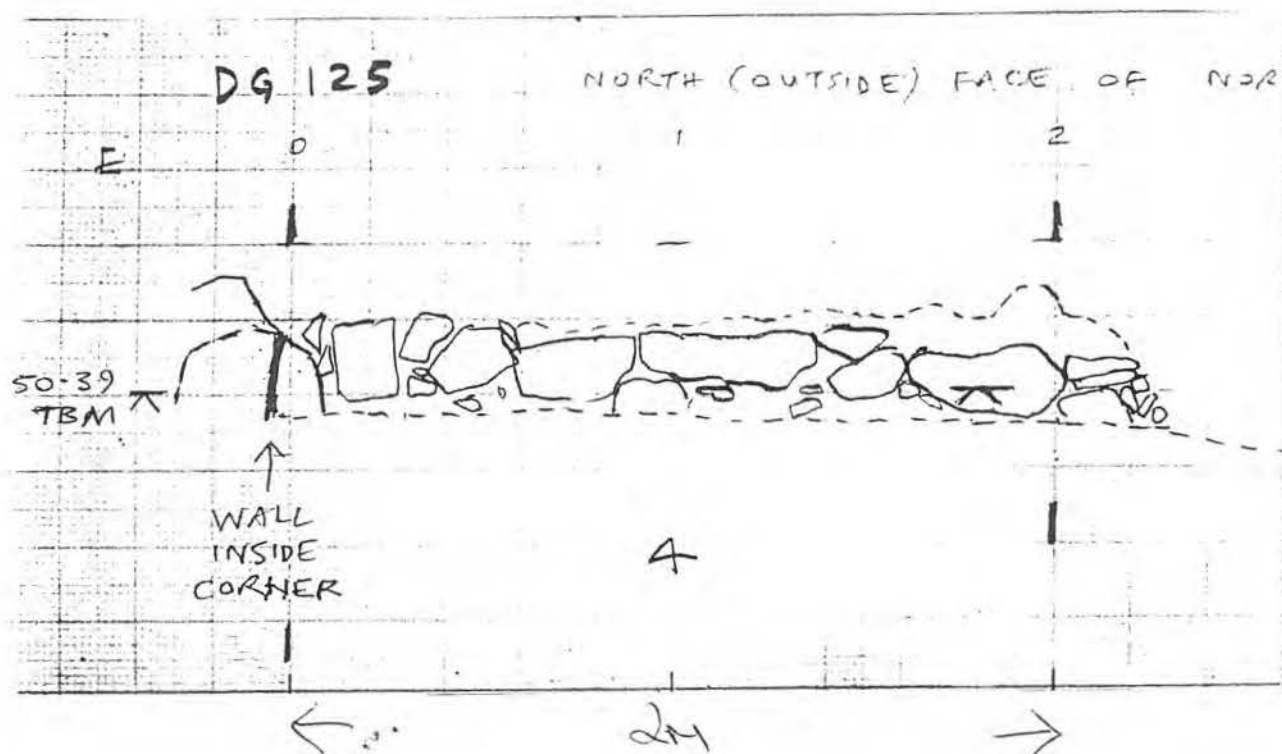
19-00 (From 4m)



SITE CODE G1504	SITE GRID REF NGR: Y/N	SITE SUB-DIV	CONTEXT NUMBER 4
CATEGORY/TYPE WALL SEG			
BUILDING B	WALL NO.	INNER (OUTER)	

## ELEVATION SKETCH/DRAWN/PHOTO

NORTH (OUTSIDE) FACE OF NORTH WALL OF BLDG B



ANS		SECTIONS/ELEVATIONS	
Sheet No.		Sheet No.	159
Drawing No.		Drawing No.	125
PHOTOGRAPHS - Film No./ Frame No.			
General			
Before	1-7		
After	19-5		
INTERPRETATION/DISCUSSION		PART OF	CONSISTS OF
		ON D/BASE <input type="checkbox"/>	INITIALS/DATE EW / 13794

SITE CODE G1504	SITE GRID REF NGR: Y/N	SITE SUB-DIV	CONTEXT NUMBER 4
CATEGORY/TYPE WALL SEG			
BUILDING B	WALL NO.	INNER OUTER	

PHOTOGRAPHS - Film No./ Frame No.  
BEFORE CONSERVATION

1-7



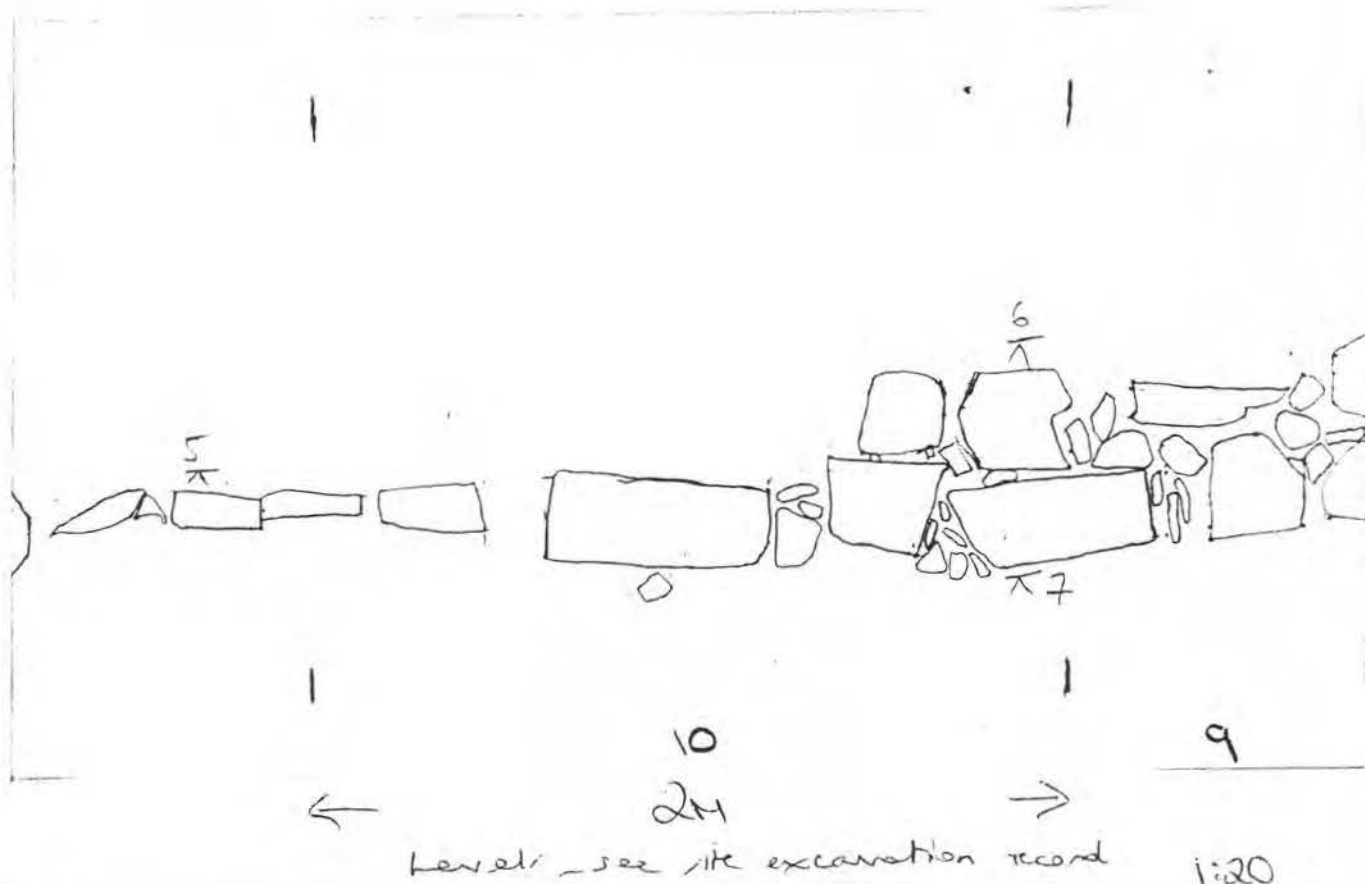
PHOTOGRAPHS - Film No./ Frame No.  
AFTER CONSERVATION

19-5



ELEVATION SKETCH/DRAWN/PHOTO

SOUTH INNER FACE OF NORTH WALL  
OF BUILDING B.

[illegible]

SITE CODE G1504	SITE GRID REF NGR: Y/N	SITE SUB-DIV	CONTEXT NUMBER 10
CATEGORY/TYPE WALL SEQ.			
BUILDING B	WALL NO.	INNER OUTER	

PHOTOGRAPHS - Film No./ Frame No.  
BEFORE CONSERVATION

1-19



PHOTOGRAPHS - Film No./ Frame No.  
AFTER CONSERVATION

19-13



1:10

ANS		SECTIONS/ELEVATIONS	
Sheet No.		Sheet No. 114	
Drawing No.		Drawing No. 95	
PHOTOGRAPHS - Film No./ Frame No.			
General _____			
Before 1-33			
After 19-27			
INTERPRETATION/DISCUSSION		PART OF	CONSISTS OF
		ON D/BASE <input type="checkbox"/>	INITIALS/DATE EW / 12.7.99

SITE CODE C/1504	SITE GRID REF NGR: Y/N	SITE SUB-DIV	CONTEXT NUMBER 17
CATEGORY/TYPE WALL SEG.			
BUILDING B	WALL NO.	INNER OUTER	

PHOTOGRAPHS - Film No./ Frame No.  
BEFORE CONSERVATION

1-33



PHOTOGRAPHS - Film No./ Frame No.  
AFTER CONSERVATION

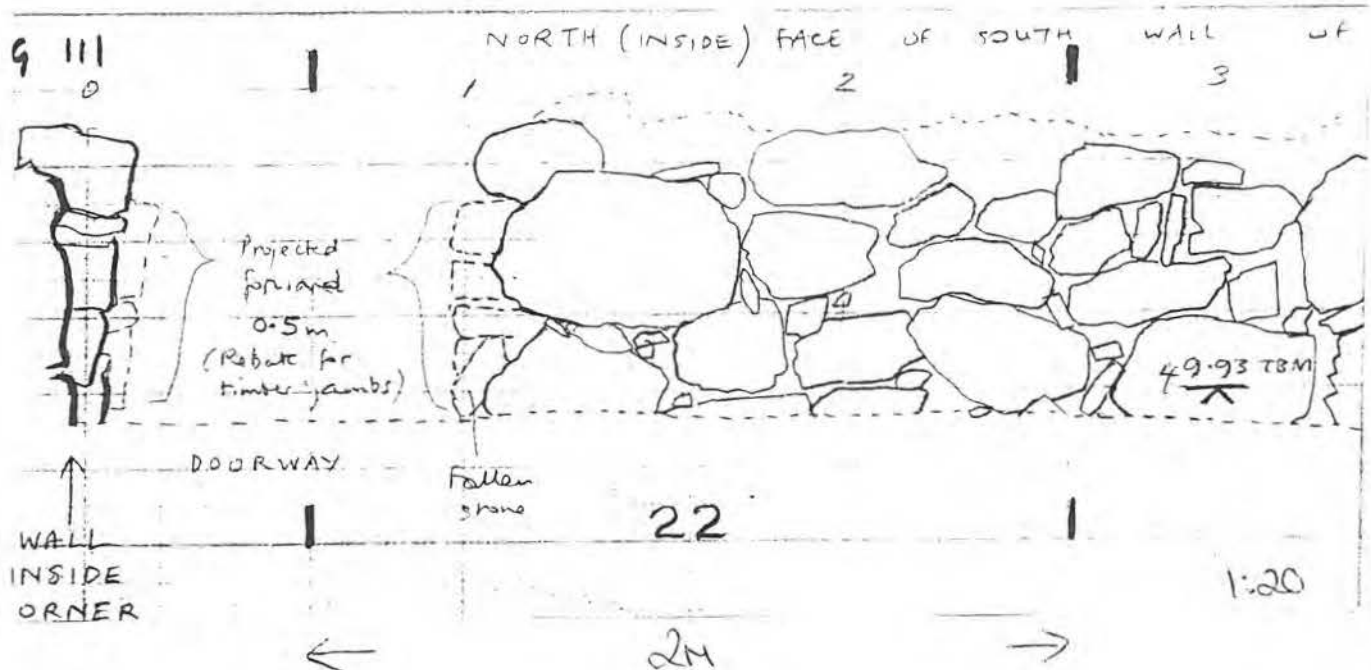
19-27



SITE CODE G1504	SITE GRID REF NGR: Y/N	SITE SUB-DIV	CONTEXT NUMBER 22
CATEGORY/TYPE WALL SEG.			
BUILDING B	WALL NO.	(INNER OUTER)	

## ELEVATION SKETCH/DRAWN/PHOTO

NORTH (INSIDE) FACE OF SOUTH WALL OF  
BUILDING B.



ANS		SECTIONS/ELEVATIONS	
Sheet No.		Sheet No.	155
Drawing No.		Drawing No.	111
PHOTOGRAPHS - Film No./ Frame No.			
General			
Before	3-7		
After	21-3		
INTERPRETATION/DISCUSSION	PART OF	CONSISTS OF	
ON D/BASE		INITIALS/DATE	
<input type="checkbox"/>		EW / 6799	

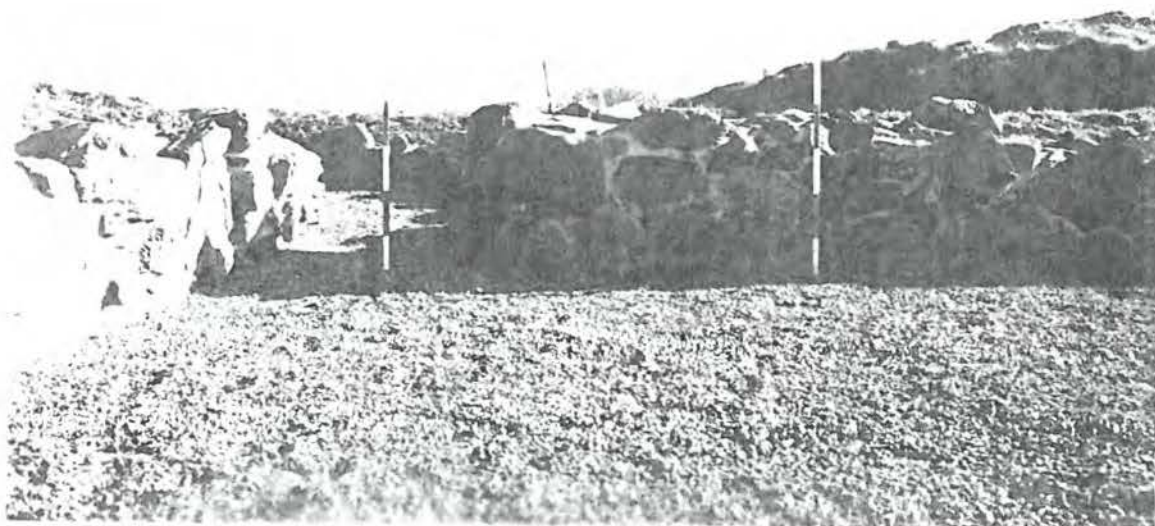
SITE CODE Q1504	SITE GRID REF NGR: Y/N	SITE SUB-DIV	CONTEXT NUMBER 22
CATEGORY/TYPE WALL SEG			
BUILDING B	WALL NO.	INNER OUTER	

PHOTOGRAPHS - Film No./ Frame No. 2 7  
BEFORE CONSERVATION



PHOTOGRAPHS - Film No./ Frame No.  
AFTER CONSERVATION

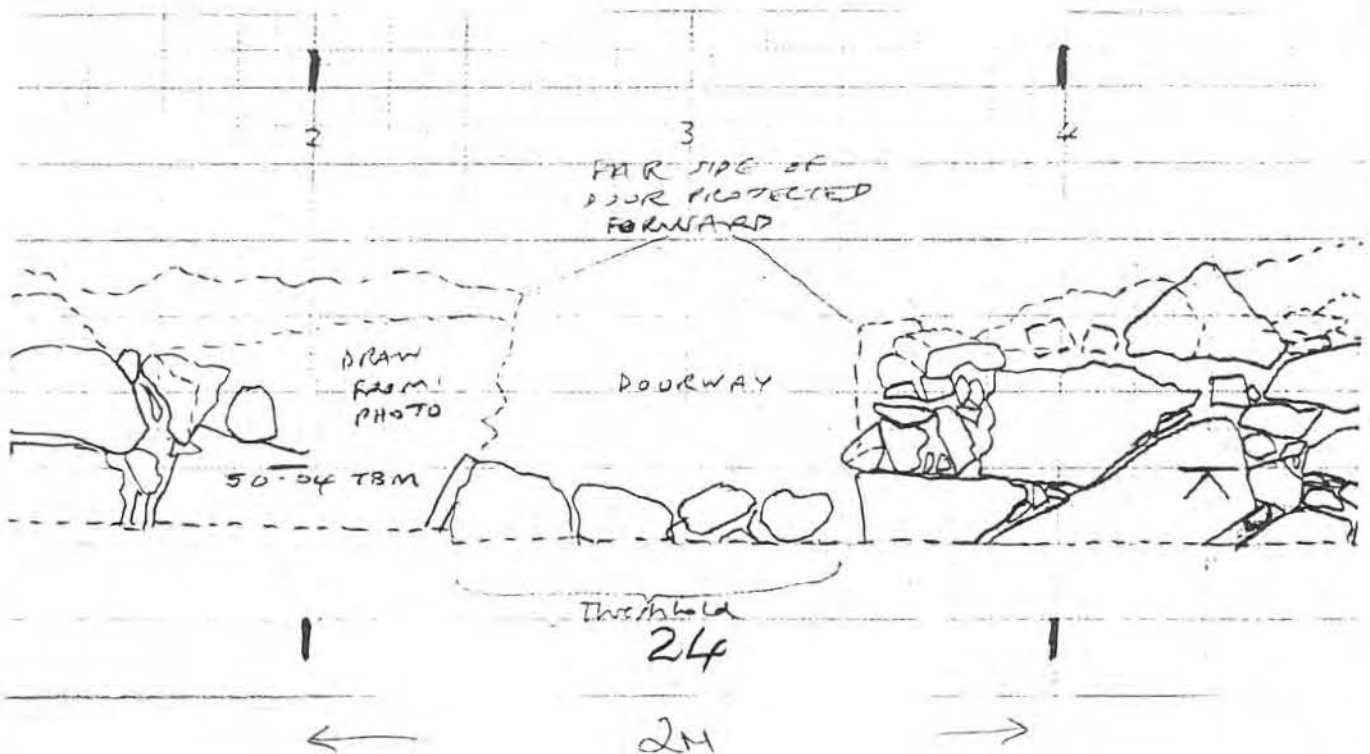
21-3



SITE CODE G15CM	SITE GRID REF NGR: Y/N	SITE SUB-DIV	CONTEXT NUMBER 24
CATEGORY/TYPE ENTRANCE			
BUILDING B	WALL NO.	INNER OUTER	

## ELEVATION SKETCH/DRAWN/PHOTO

WEST (INNER) FACE OF EAST WALL  
OF BUILDING B.



ANS		SECTIONS/ELEVATIONS	
Sheet No.		Sheet No. 156	
Drawing No.		Drawing No. 112	
PHOTOGRAPHS - Film No./ Frame No.			
General			
Before 3-11			
After 21-7			
INTERPRETATION/DISCUSSION		PART OF	
<p>The north side of the doorway collapsed after photography but before drawing. The reconstruction had to be raised slightly to make it stable as the masonry had previously been leaning</p>		CONSISTS OF	
		ON D/BASE	INITIALS/DATE
		<input type="checkbox"/>	EN / 5.7.99

SITE CODE G1504	SITE GRID REF NGR: Y/N	SITE SUB-DIV	CONTEXT NUMBER 21
CATEGORY/TYPE ENTRANCE			
BUILDING B	WALL NO.	INNER OUTER	

PHOTOGRAPHS - Film No./ Frame No.  
BEFORE CONSERVATION

3-11



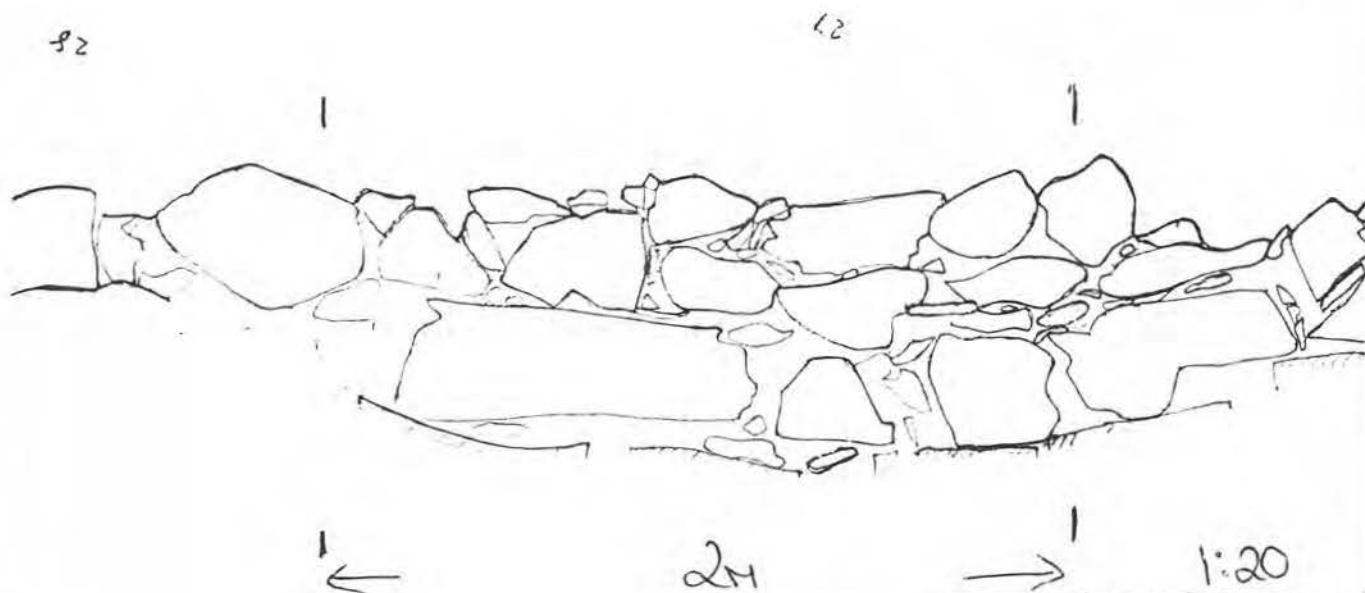
PHOTOGRAPHS - Film No./ Frame No.  
AFTER CONSERVATION

21-7



ELEVATION SKETCH/DRAWN/PHOTO

WEST OUTER FACE OF WEST WALL OF  
BUILDING B

[illegible]

SITE CODE G1504	SITE GRID REF NGR: Y/N	SITE SUB-DIV	CONTEXT NUMBER 27
CATEGORY/TYPE WALL SEG			
BUILDING B	WALL NO.	INNER <u>OUTER</u>	
PHOTOGRAPHS - Film No./ Frame No. BEFORE CONSERVATION 3-17			



PHOTOGRAPHS - Film No. Frame No.  
AFTER CONSERVATION

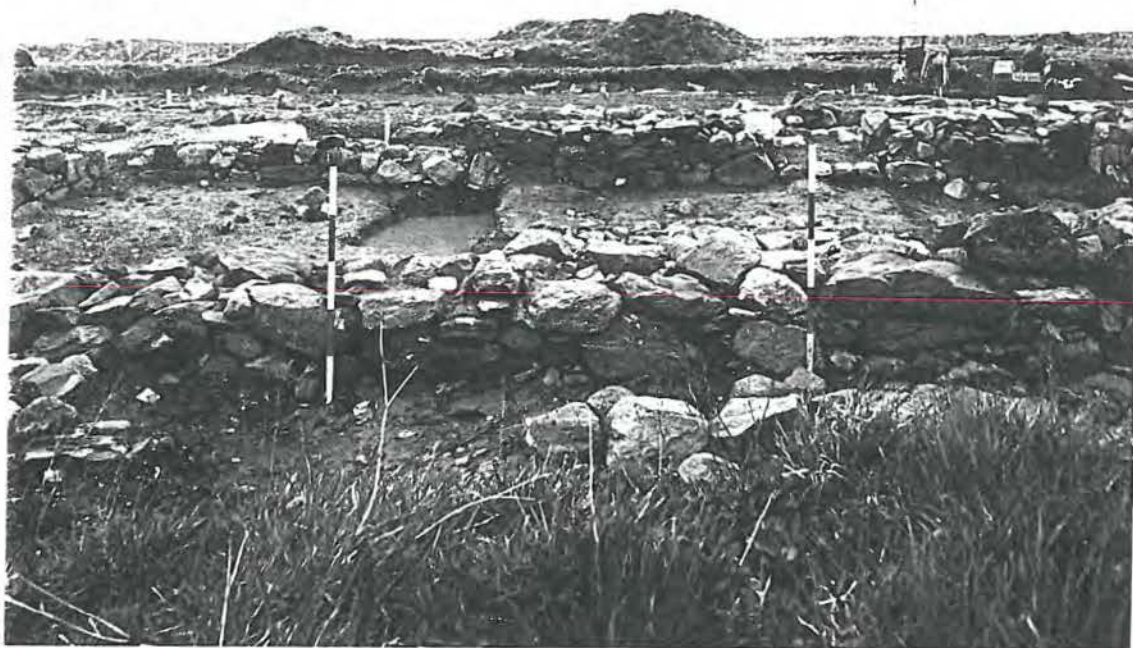




SITE CODE G1504	SITE GRID REF NGR: Y/N	SITE SUB-DIV	CONTEXT NUMBER 30
CATEGORY/TYPE WALL SEG			
BUILDING E	WALL NO.	INNER OUTER	

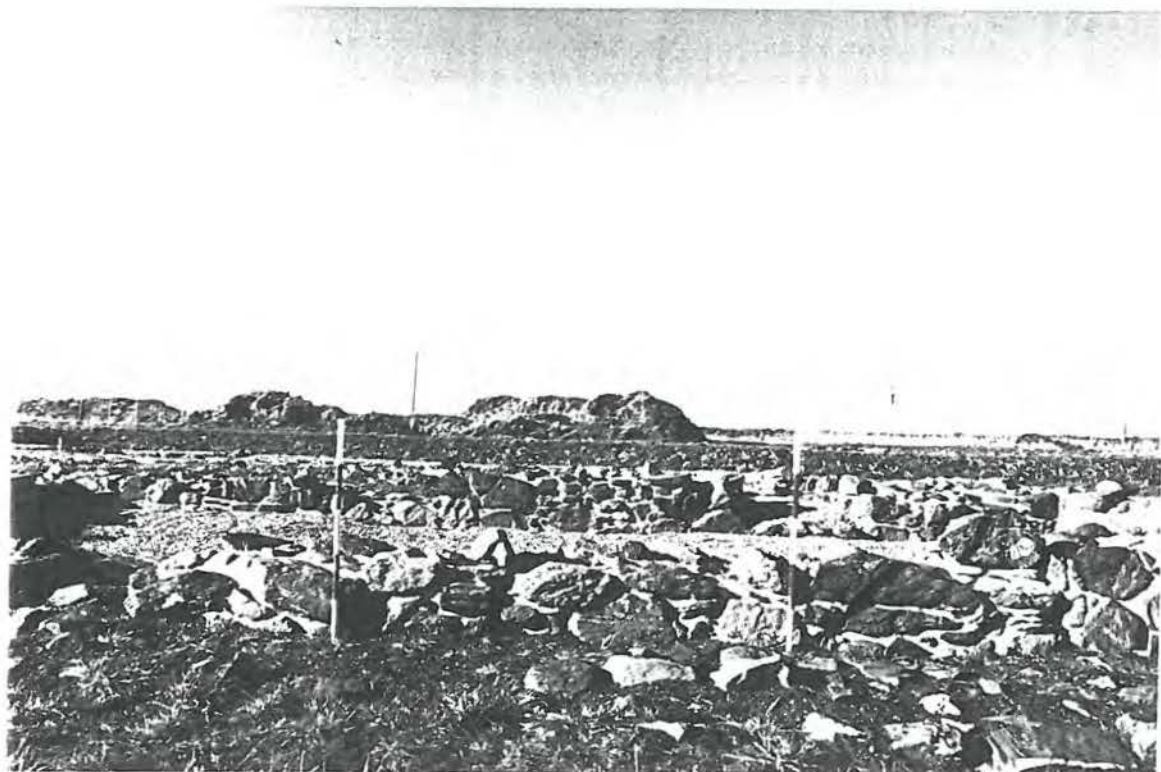
PHOTOGRAPHS - Film No./ Frame No.  
BEFORE CONSERVATION

3-23



PHOTOGRAPHS - Film No./ Frame No.  
AFTER CONSERVATION

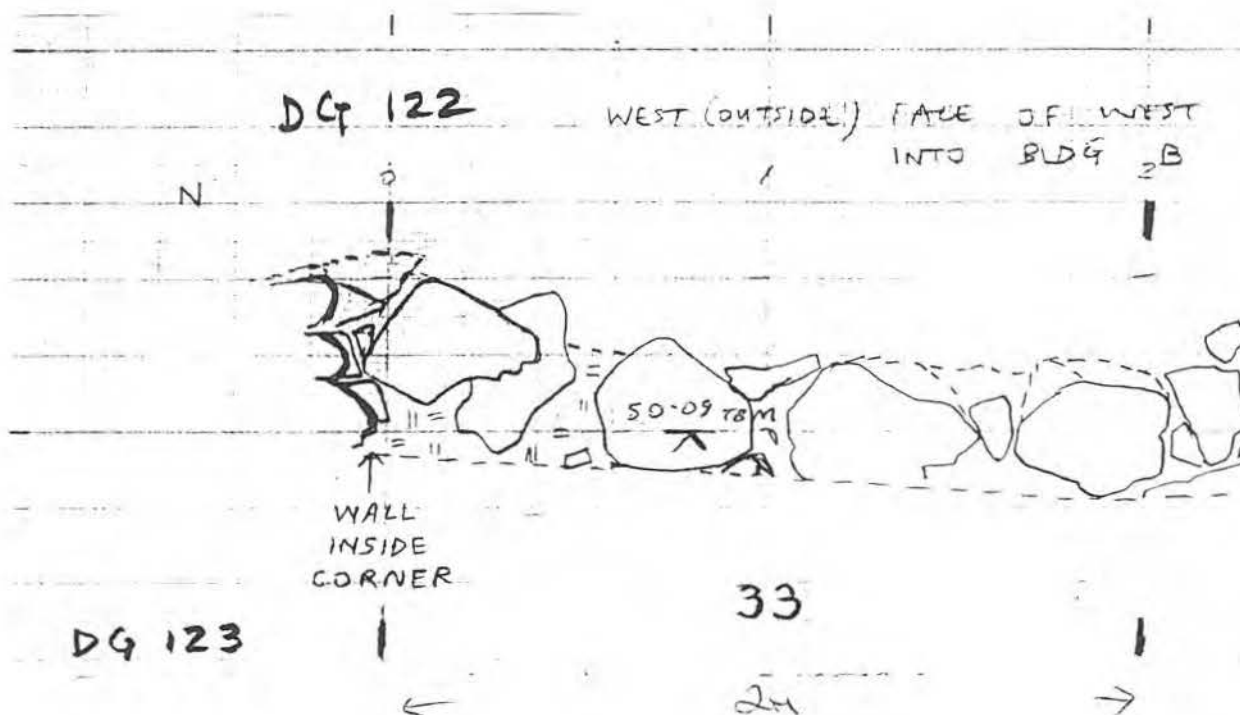
21-19



SITE CODE C11504	SITE GRID REF NGR: Y/N	SITE SUB-DIV	CONTEXT NUMBER 33
CATEGORY/TYPE WALL SEG			
BUILDING B	WALL NO.	INNER (OUTER)	

## ELEVATION SKETCH/DRAWN/PHOTO

WEST (OUTSIDE) FACE OF WEST WALL OF CORRIDOR  
INTO BUILDING B



ANS		SECTIONS/ELEVATIONS	
Sheet No.		Sheet No.	159
Drawing No.		Drawing No.	122
PHOTOGRAPHS - Film No./ Frame No.			
General			
Before	3-29		
After	21-25		
INTERPRETATION/DISCUSSION	PART OF	CONSISTS OF	
		ON D/BASE <input type="checkbox"/>	INITIALS/DATE EW / 5799

SITE CODE G1504	SITE GRID REF NGR: Y/N	SITE SUB-DIV	CONTEXT NUMBER 33
CATEGORY/TYPE WALL SEG			
BUILDING B	WALL NO.	INNER OUTER	

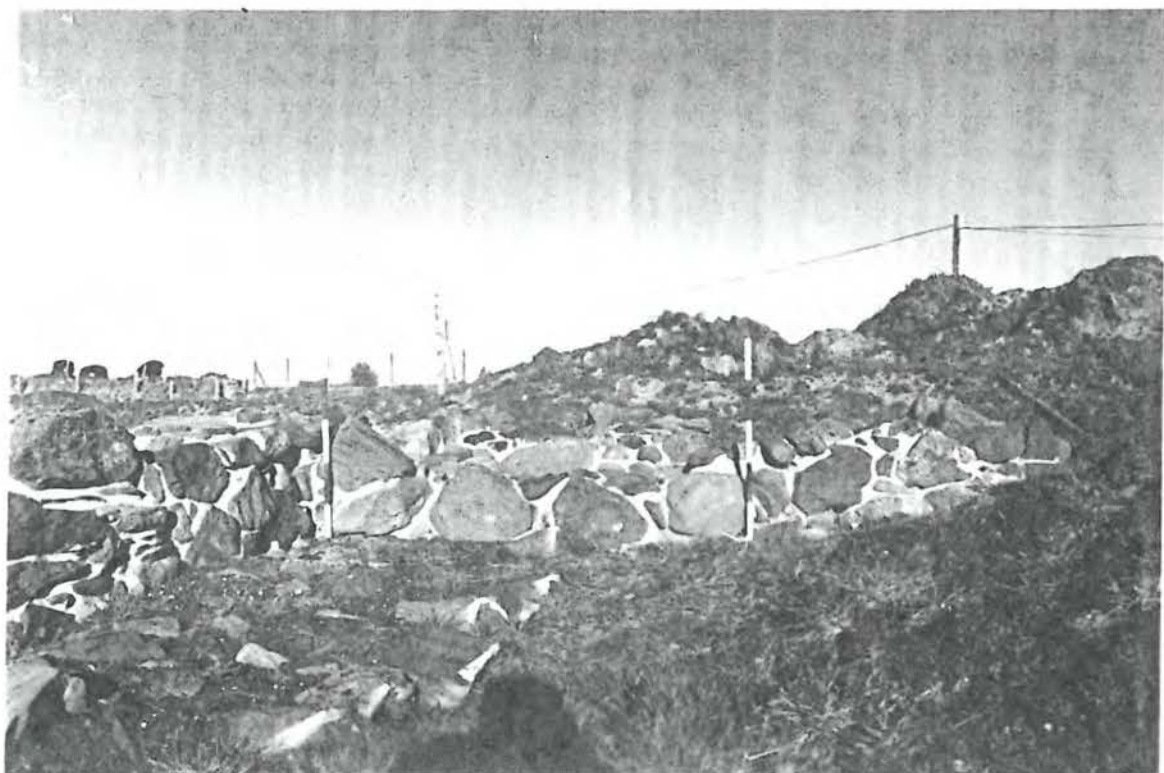
PHOTOGRAPHS - Film No./ Frame No.  
BEFORE CONSERVATION

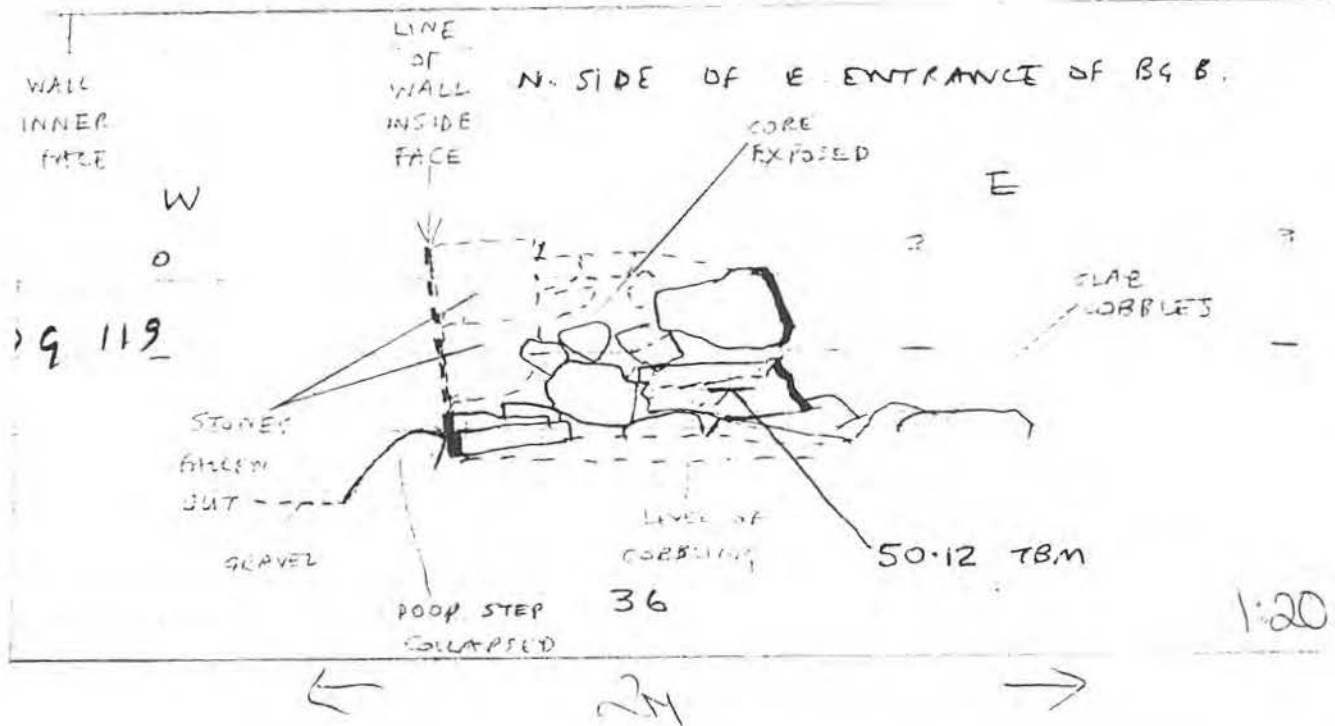
3-29



PHOTOGRAPHS - Film No./ Frame No.  
AFTER CONSERVATION

21-25



ELEVATION SKETCH/DRAWN/PHOTO[illegible]

SITE CODE 21504	SITE GRID REF NGR: Y/N	SITE SUB-DIV	CONTEXT NUMBER 36
CATEGORY/TYPE ENTRANCE WALL			
BUILDING B	WALL NO.	INNER OUTER	

PHOTOGRAPHS - Film No./ Frame No.  
BEFORE CONSERVATION

5-1



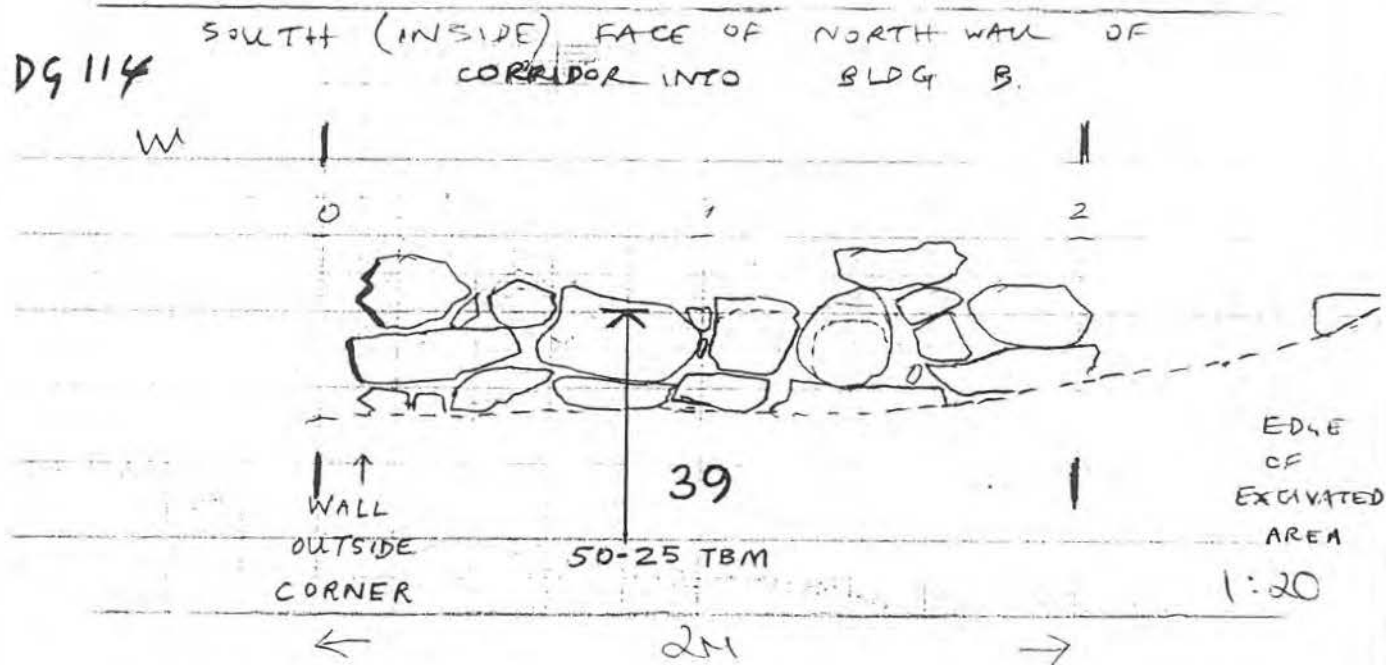
PHOTOGRAPHS - Film No./ Frame No.  
AFTER CONSERVATION

21-31



SITE CODE G1504	SITE GRID REF NGR: Y/N	SITE SUB-DIV	CONTEXT NUMBER 39
CATEGORY/TYPE WALL SECT			
BUILDING B	WALL NO.	(INNER) OUTER	

## ELEVATION SKETCH/DRAWN/PHOTO



ANS		SECTIONS/ELEVATIONS	
Sheet No.		Sheet No.	157
Drawing No.		Drawing No.	114
PHOTOGRAPHS - Film No./ Frame No.			
General			
Before	5-7		
After	23-1		
INTERPRETATION/DISCUSSION	PART OF	CONSISTS OF	
ON D/BASE		INITIALS/DATE	
<input type="checkbox"/>		EW / 57 99	

SITE CODE G1504	SITE GRID REF NGR: Y/N	SITE SUB-DIV	CONTEXT NUMBER 39
CATEGORY/TYPE WALL SEG			
BUILDING B	WALL NO.	INNER OUTER	
PHOTOGRAPHS - Film No./ Frame No. BEFORE CONSERVATION 5-7			



PHOTOGRAPHS - Film No./ Frame No.  
AFTER CONSERVATION

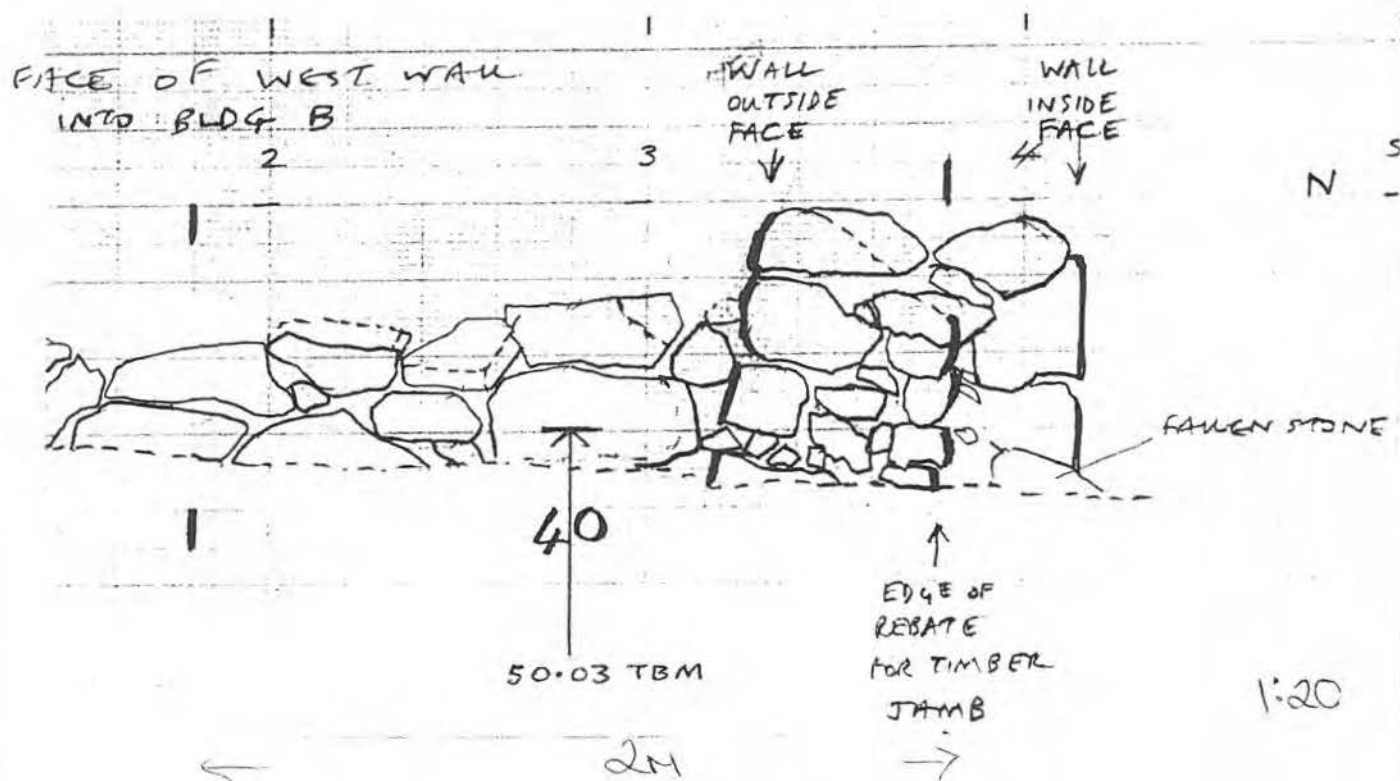
23-1



SITE CODE C1504	SITE GRID REF NGR: Y/N	SITE SUB-DIV	CONTEXT NUMBER 40
CATEGORY/TYPE WALL SEQ.			
BUILDING B	WALL NO.	INNER OUTER	

## ELEVATION SKETCH/DRAWN/PHOTO

EAST (INSIDE) FACE OF WEST WALL OF  
CORRIDOR INTO BLDG B



ANS		SECTIONS/ELEVATIONS	
Sheet No.		Sheet No.	157
Drawing No.		Drawing No.	113
PHOTOGRAPHS - Film No./ Frame No.			
General			
Before	5-9		
After	23-3		
INTERPRETATION/DISCUSSION		PART OF	CONSISTS OF
		ON D/BASE <input type="checkbox"/>	INITIALS/DATE EW / 5.7.99

SITE CODE C1504	SITE GRID REF NGR: Y/N	SITE SUB-DIV	CONTEXT NUMBER 40
CATEGORY/TYPE WALL SEG			
BUILDING B	WALL NO.	INNER OUTER	
PHOTOGRAPHS - Film No./ Frame No. BEFORE CONSERVATION 5-9			



PHOTOGRAPHS - Film No./ Frame No.  
AFTER CONSERVATION

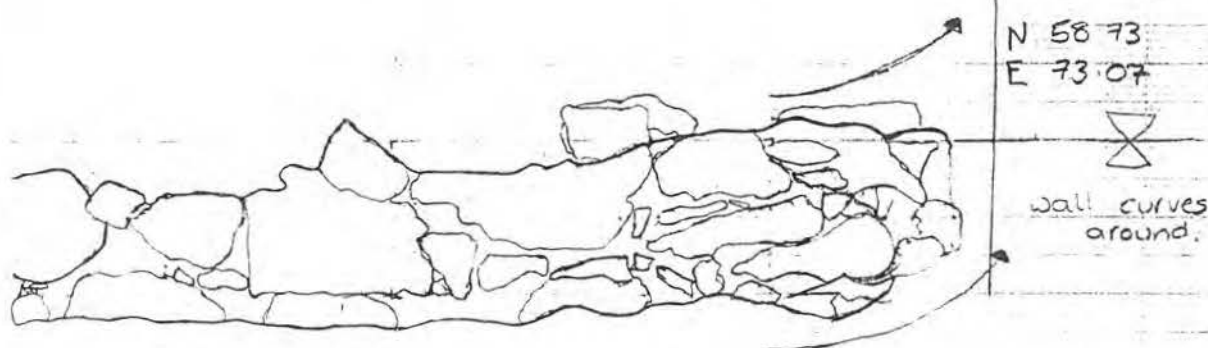
23-3



SITE CODE G1504	SITE GRID REF NGR: Y/N	SITE SUB-DIV	CONTEXT NUMBER 43
CATEGORY/TYPE WALL SEG.			
BUILDING B	WALL NO.	INNER (OUTER)	

## ELEVATION SKETCH/DRAWN/PHOTO

EAST (OUTER) WALL OF BUILDING B.



ANS		SECTIONS/ELEVATIONS	
Sheet No.		Sheet No. 97	
Drawing No.		Drawing No. 85	
PHOTOGRAPHS - Film No./ Frame No.			
General			
Before 5-15			
After 23-9			
INTERPRETATION/DISCUSSION		PART OF	
		CONSISTS OF	
FOR LEVEL SEE ORIGINAL SITE EXCAVATION RECORDS			
		ON D/BASE <input type="checkbox"/>	INITIALS/DATE CW / 12.7.99

SITE CODE G1504	SITE GRID REF NGR: Y/N	SITE SUB-DIV	CONTEXT NUMBER 43
CATEGORY/TYPE WALL SEG.			
BUILDING B	WALL NO.	INNER OUTER	
PHOTOGRAPHS - Film No./ Frame No. BEFORE CONSERVATION 5-15			



PHOTOGRAPHS - Film No./ Frame No.  
AFTER CONSERVATION

23-9



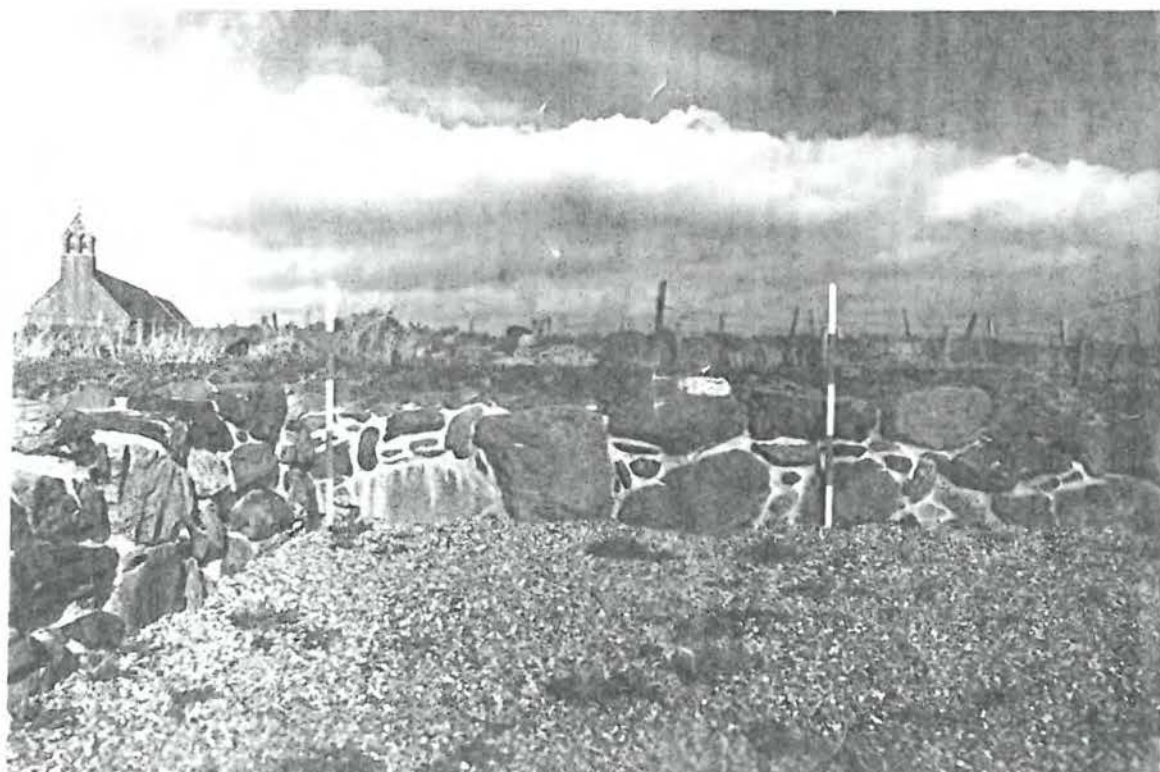


SITE CODE C11504	SITE GRID REF NGR: Y/N	SITE SUB-DIV	CONTEXT NUMBER 52
CATEGORY/TYPE WALL SEG.			
BUILDING C	WALL NO.	INNER OUTER	
PHOTOGRAPHS - Film No./ Frame No. BEFORE CONSERVATION 5-33			



PHOTOGRAPHS - Film No./ Frame No.  
AFTER CONSERVATION

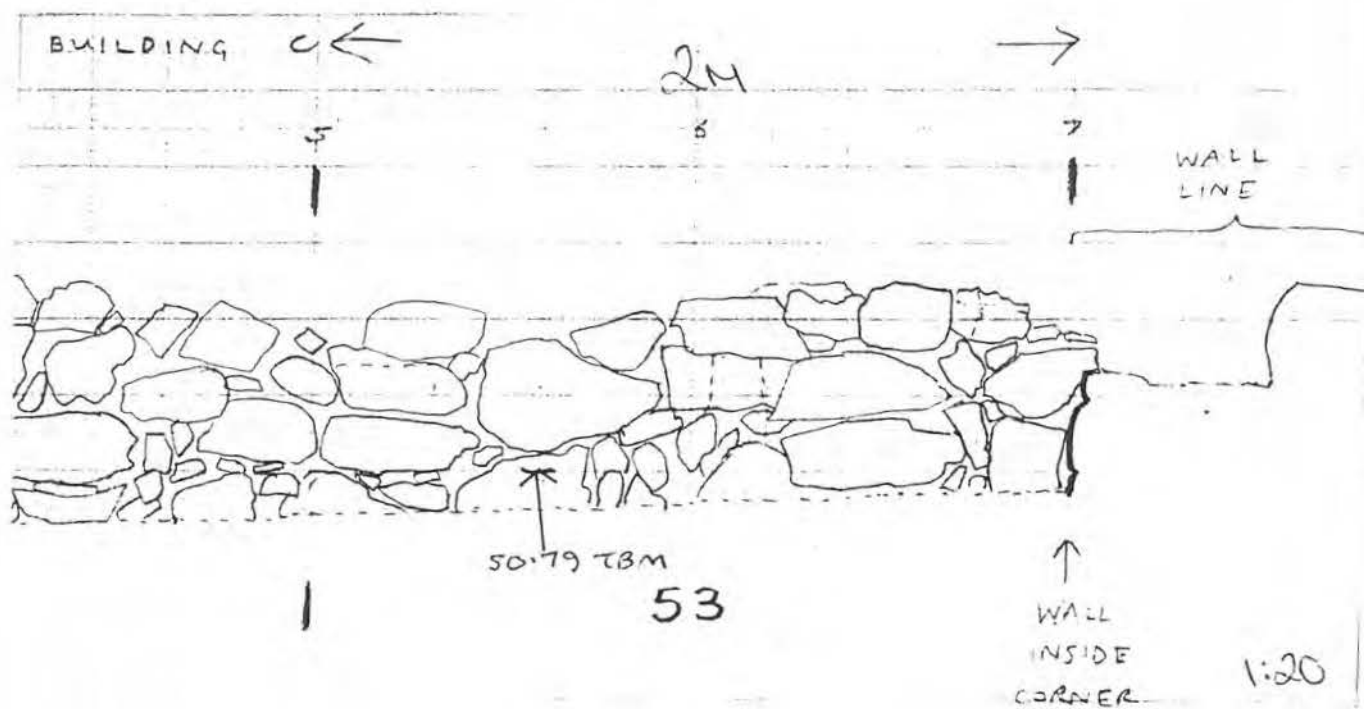
23-27



SITE CODE C1504	SITE GRID REF NGR: Y/N	SITE SUB-DIV	CONTEXT NUMBER 53
CATEGORY/TYPE WALL SEG			
BUILDING C	WALL NO.	INNER OUTER	

## ELEVATION SKETCH/DRAWN/PHOTO

SOUTH FACE OF NORTH WALL OF SOUTH COMPARTMENT  
OF BUILDING C

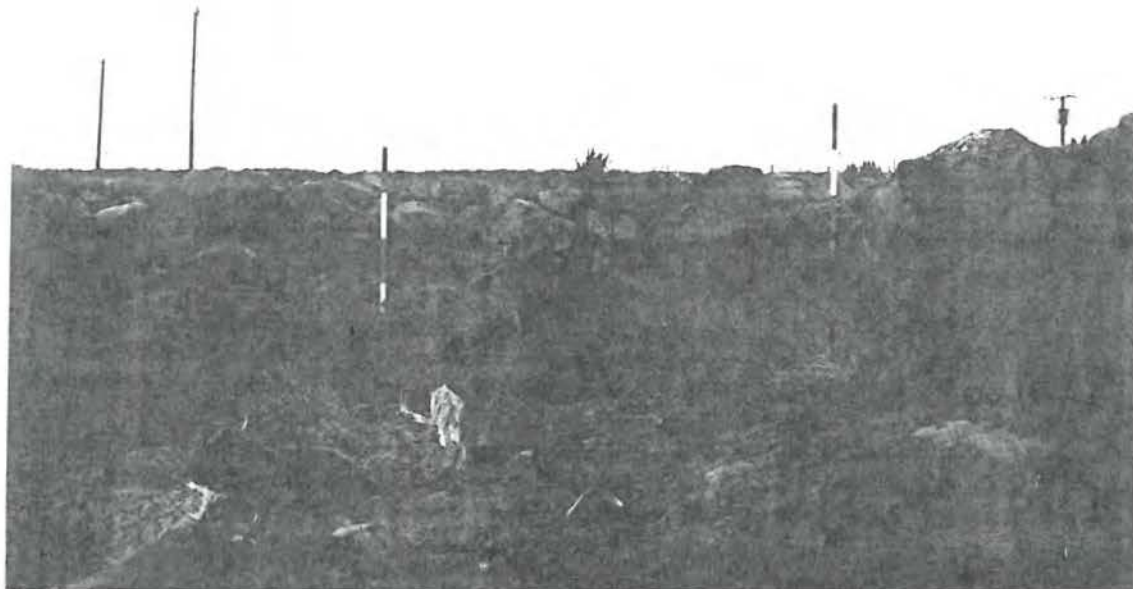


ANS		SECTIONS/ELEVATIONS	
Sheet No.		Sheet No.	1102
Drawing No.		Drawing No.	130
PHOTOGRAPHS - Film No./ Frame No.			
General			
Before	5-35		
After	23-29		
INTERPRETATION/DISCUSSION	PART OF	CONSISTS OF	
ON D/BASE		INITIALS/DATE	
<input type="checkbox"/>		EN / 6.7.99	

SITE CODE G1504	SITE GRID REF NGR: Y/N	SITE SUB-DIV	CONTEXT NUMBER 53
CATEGORY/TYPE WALL SEG.			
BUILDING C	WALL NO.	INNER OUTER	

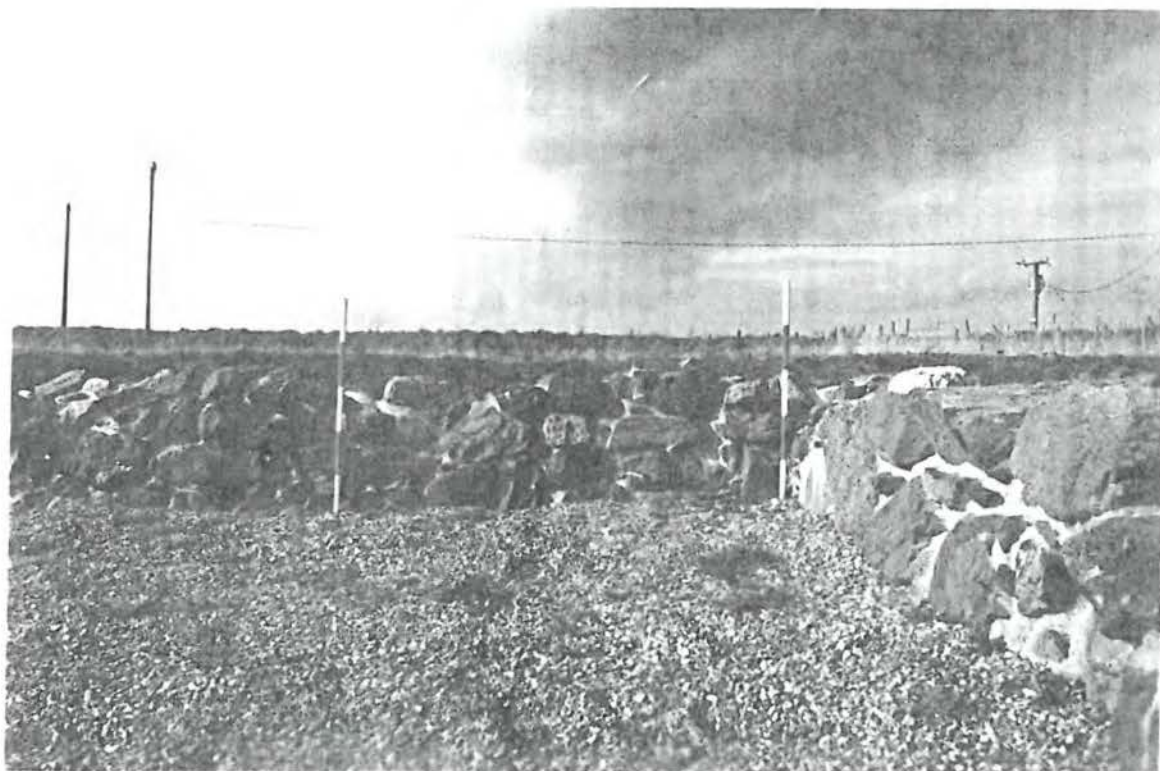
PHOTOGRAPHS - Film No./ Frame No.  
BEFORE CONSERVATION

5-35



PHOTOGRAPHS - Film No. Frame No.  
AFTER CONSERVATION

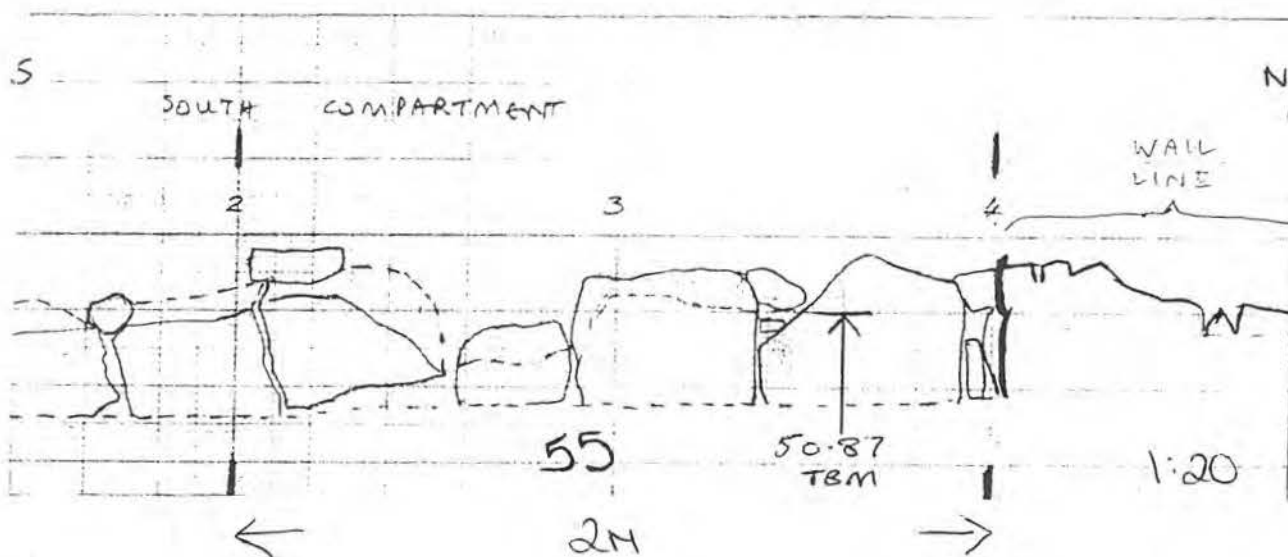
23-29



SITE CODE G1504	SITE GRID REF NGR: Y/N	SITE SUB-DIV	CONTEXT NUMBER 55
CATEGORY/TYPE WALL SEG			
BUILDING C	WALL NO.	(INNER) OUTER	

## ELEVATION SKETCH/DRAWN/PHOTO

EAST (INNER) FACE OF WEST WALL OF  
BUILDING C.



ANS

SECTIONS/ELEVATIONS

Sheet No.

Sheet No.

162

Drawing No.

Drawing No.

131

PHOTOGRAPHS - Film No./ Frame No.

General

Before

7-3

After

23-33

INTERPRETATION/DISCUSSION

PART OF

CONSISTS OF

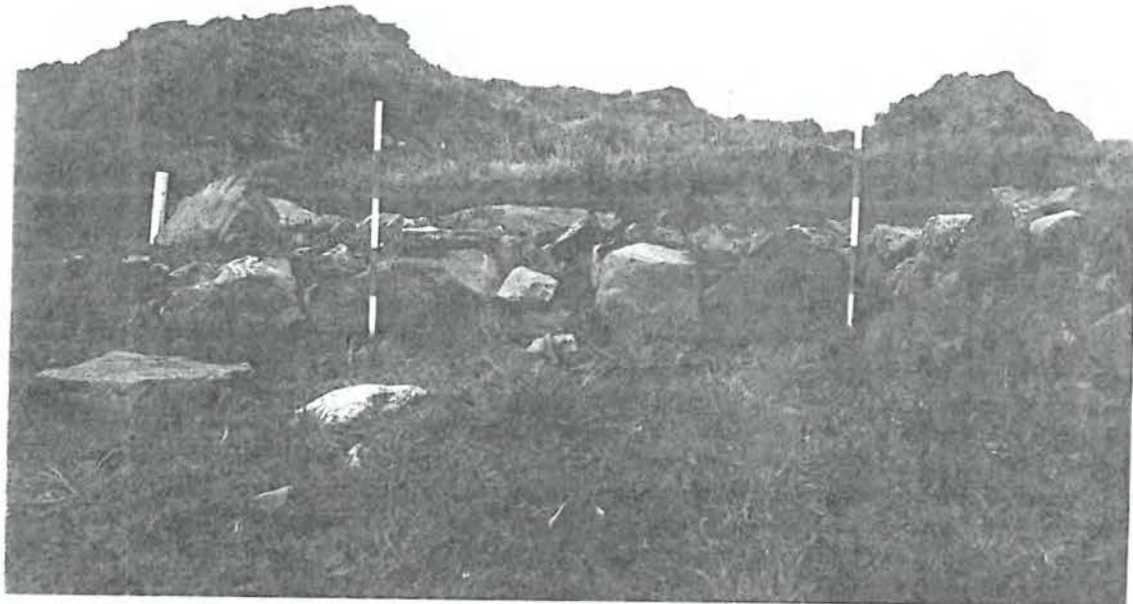
ON D/BASE



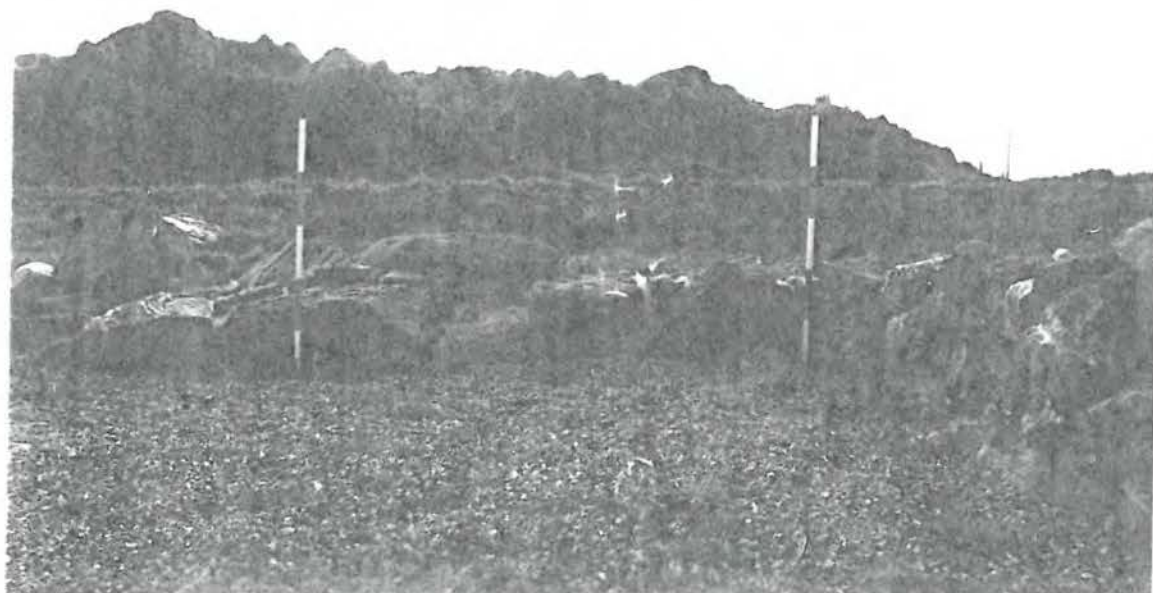
INITIALS/DATE

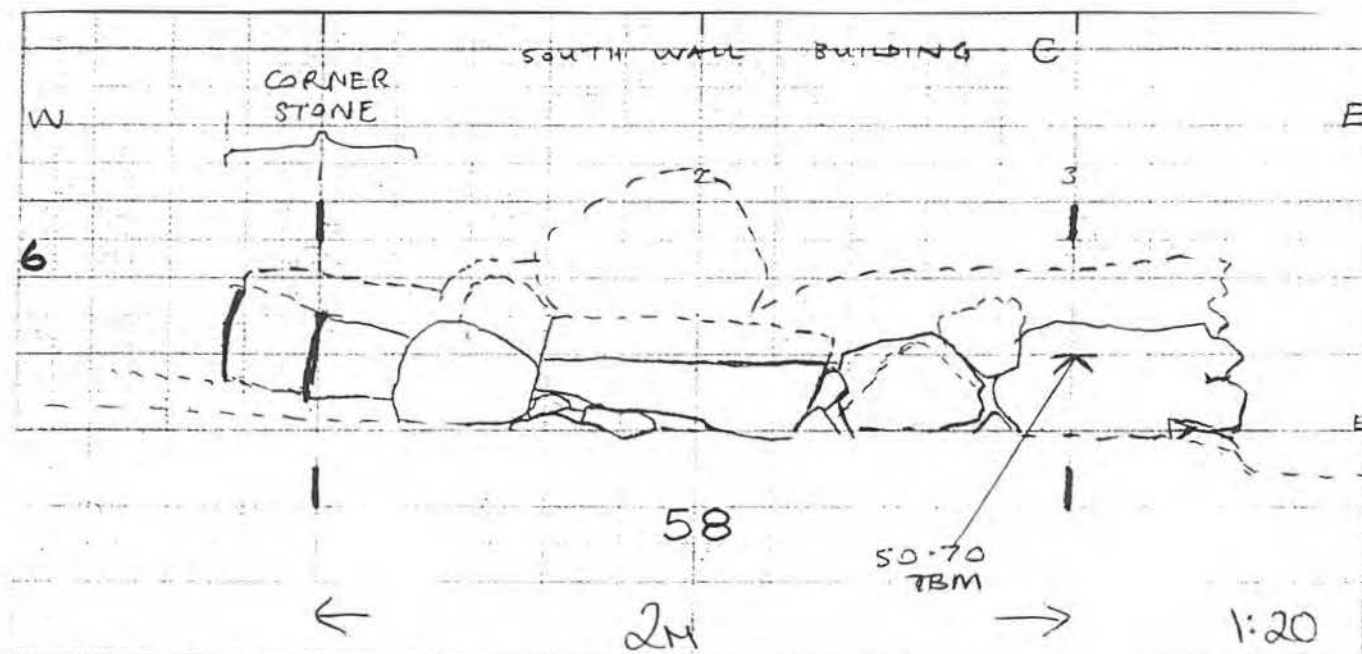
EN / 6.7.99

SITE CODE 91504	SITE GRID REF NGR: Y/N	SITE SUB-DIV	CONTEXT NUMBER 55
CATEGORY/TYPE WALL SEG.			
BUILDING C	WALL NO.	INNER OUTER	
PHOTOGRAPHS - Film No./ Frame No. BEFORE CONSERVATION 7-3			



PHOTOGRAPHS - Film No./ Frame No.  
AFTER CONSERVATION 22-23



ELEVATION SKETCH/DRAWN/PHOTO[illegible]

SITE CODE Q1504	SITE GRID REF NGR: Y/N	SITE SUB-DIV	CONTEXT NUMBER 58
CATEGORY/TYPE WALL SEG			
BUILDING C	WALL NO.	INNER (OUTER)	

PHOTOGRAPHS - Film No./ Frame No.  
BEFORE CONSERVATION

7-9



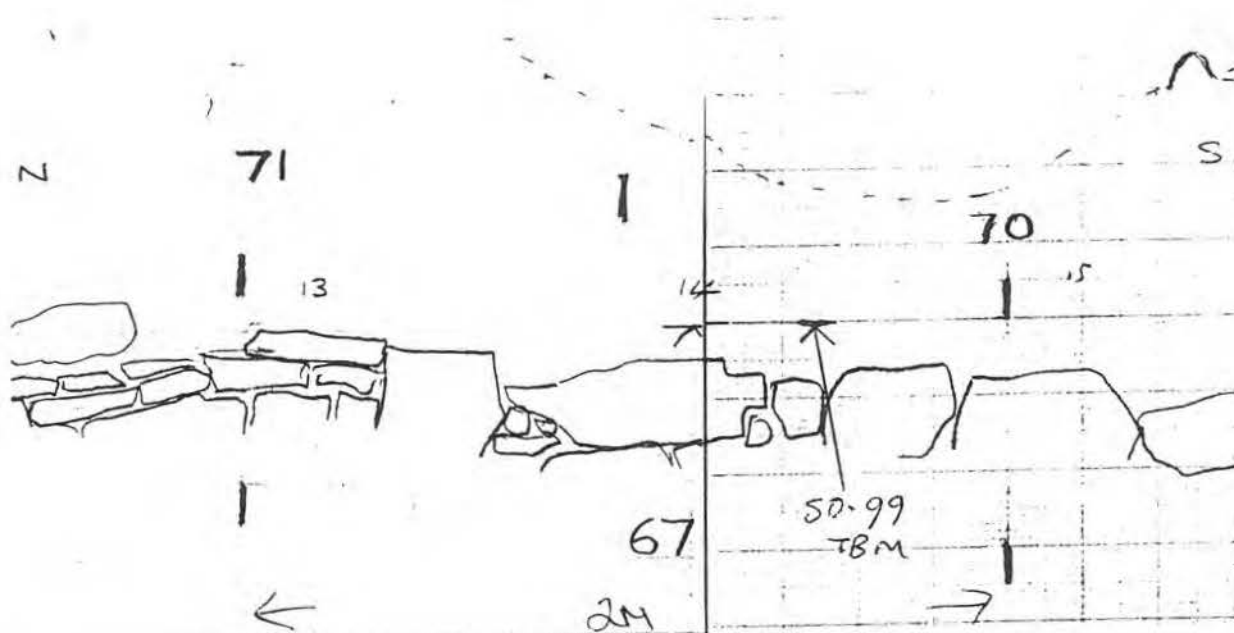
PHOTOGRAPHS - Film No. Frame No.  
AFTER CONSERVATION

25-3



ELEVATION SKETCH/DRAWN/PHOTO

PERIMETER WALL INNER FACE  
EAST



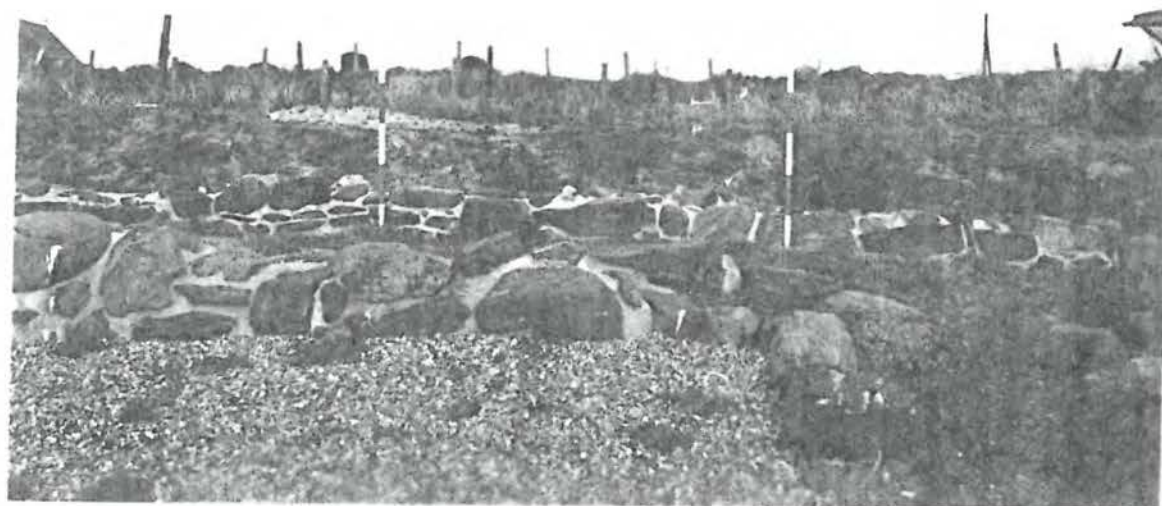
ANS		SECTIONS/ELEVATIONS	
Sheet No.		Sheet No. 169	
Drawing No.		Drawing No. 140	
PHOTOGRAPHS - Film No./ Frame No.			
General _____			
Before 7-27			
After 25-29			
INTERPRETATION/DISCUSSION		PART OF	CONSISTS OF
		ON D/BASE <input type="checkbox"/>	INITIALS/DATE EK / 6799

SITE CODE G1504	SITE GRID REF NGR: Y/N	SITE SUB-DIV	CONTEXT NUMBER 67
CATEGORY/TYPE PERIMETER WALL			
BUILDING C	WALL NO.	INNER OUTER	
PHOTOGRAPHS - Film No./ Frame No. BEFORE CONSERVATION 7-27			



PHOTOGRAPHS - Film No. Frame No.  
AFTER CONSERVATION

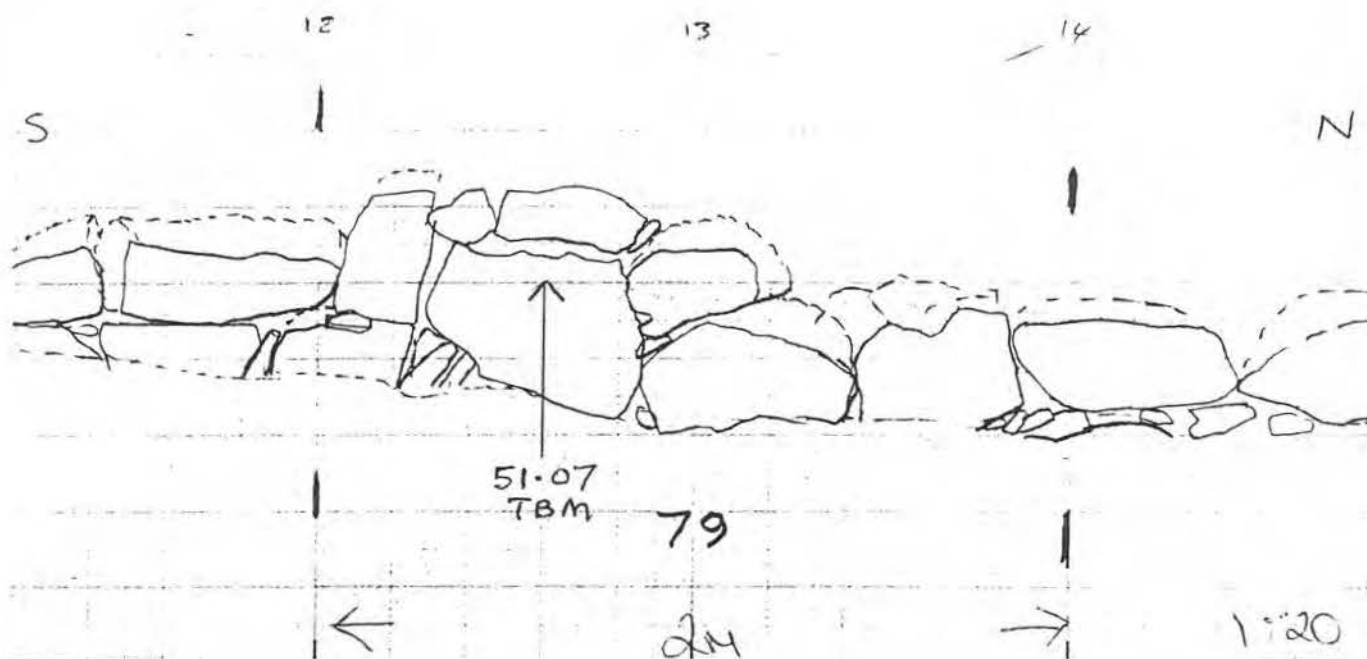
25-29



SITE CODE C1504	SITE GRID REF NGR: Y/N	SITE SUB-DIV	CONTEXT NUMBER 79
CATEGORY/TYPE WALL SEG			
BUILDING C	WALL NO.	INNER OUTER	

## ELEVATION SKETCH/DRAWN/PHOTO

EAST OUTER FACE OF EAST WALL OF BLDG C

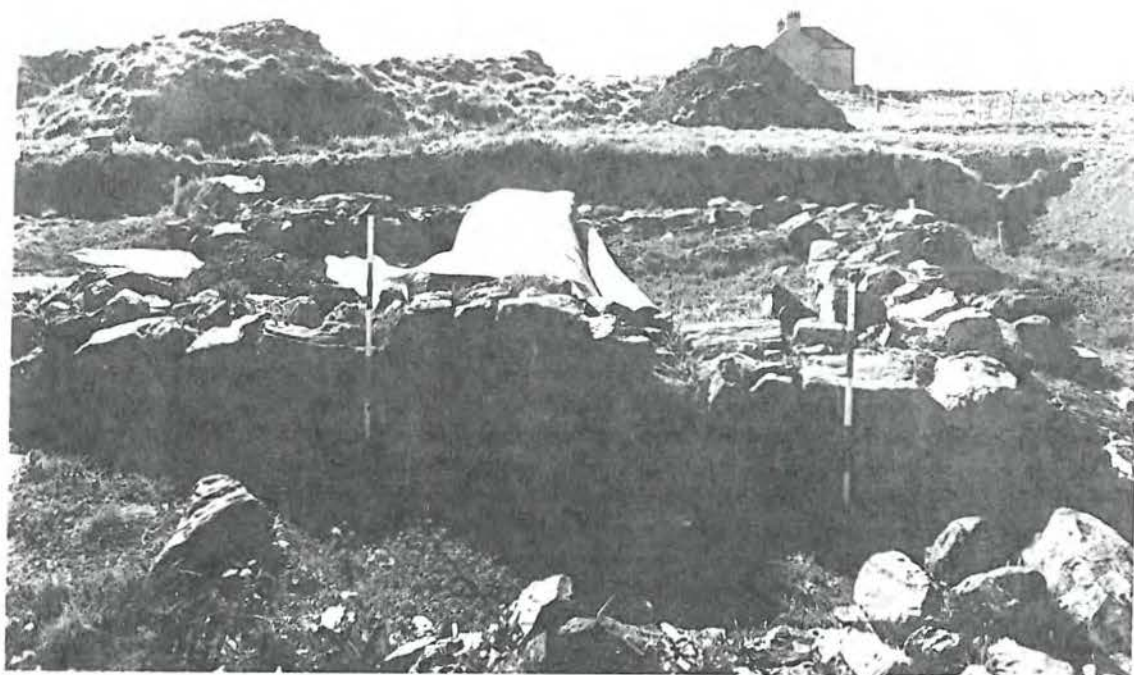


ANS		SECTIONS/ELEVATIONS	
Sheet No.		Sheet No. 163	
Drawing No.		Drawing No. 133	
PHOTOGRAPHS - Film No./ Frame No.			
General			
Before 9-15			
After 27-23			
INTERPRETATION/DISCUSSION		PART OF	
		CONSISTS OF	
		ON D/BASE <input type="checkbox"/>	INITIALS/DATE EN / 6799

SITE CODE G1504	SITE GRID REF NGR: Y/N	SITE SUB-DIV	CONTEXT NUMBER 79
CATEGORY/TYPE WALL SEG			
BUILDING C	WALL NO.	INNER <u>OUTER</u>	

PHOTOGRAPHS - Film No./ Frame No.  
BEFORE CONSERVATION

9-15



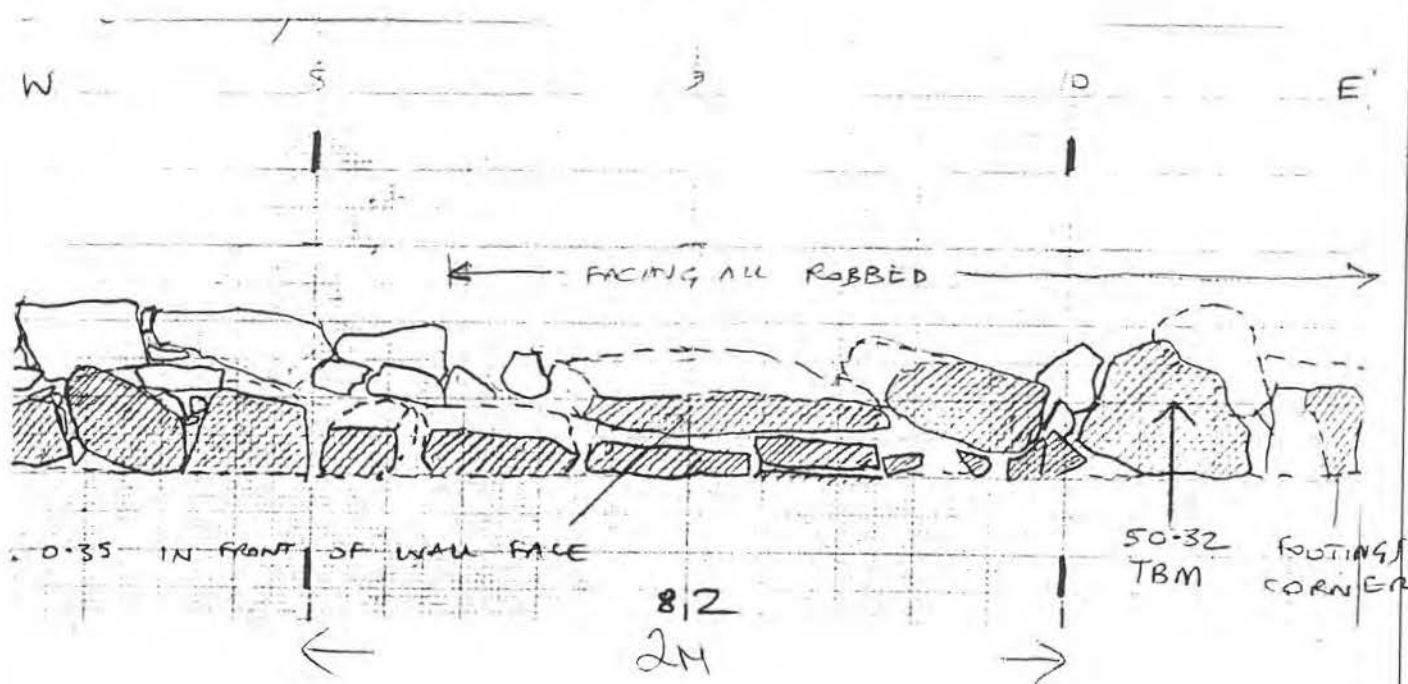
PHOTOGRAPHS - Film No./ Frame No.  
AFTER CONSERVATION

27-23



ELEVATION SKETCH/DRAWN/PHOTO

SOUTH (OUTSIDE) FACE OF SOUTH WALL  
OF BUILDING A.



1:20

ANS		SECTIONS/ELEVATIONS	
Sheet No.		Sheet No. 153	
Drawing No.		Drawing No. 106	
PHOTOGRAPHS - Film No./ Frame No.			
General _____			
Before 9-21			
After 27-29			
INTERPRETATION/DISCUSSION		PART OF	CONSISTS OF
		ON D/BASE <input type="checkbox"/>	INITIALS/DATE en / 77.99

SITE CODE G1504	SITE GRID REF NGR: Y/N	SITE SUB-DIV	CONTEXT NUMBER 82
CATEGORY/TYPE WALL SEG.			
BUILDING A	WALL NO.	INNER OUTER	

PHOTOGRAPHS - Film No./ Frame No.  
BEFORE CONSERVATION

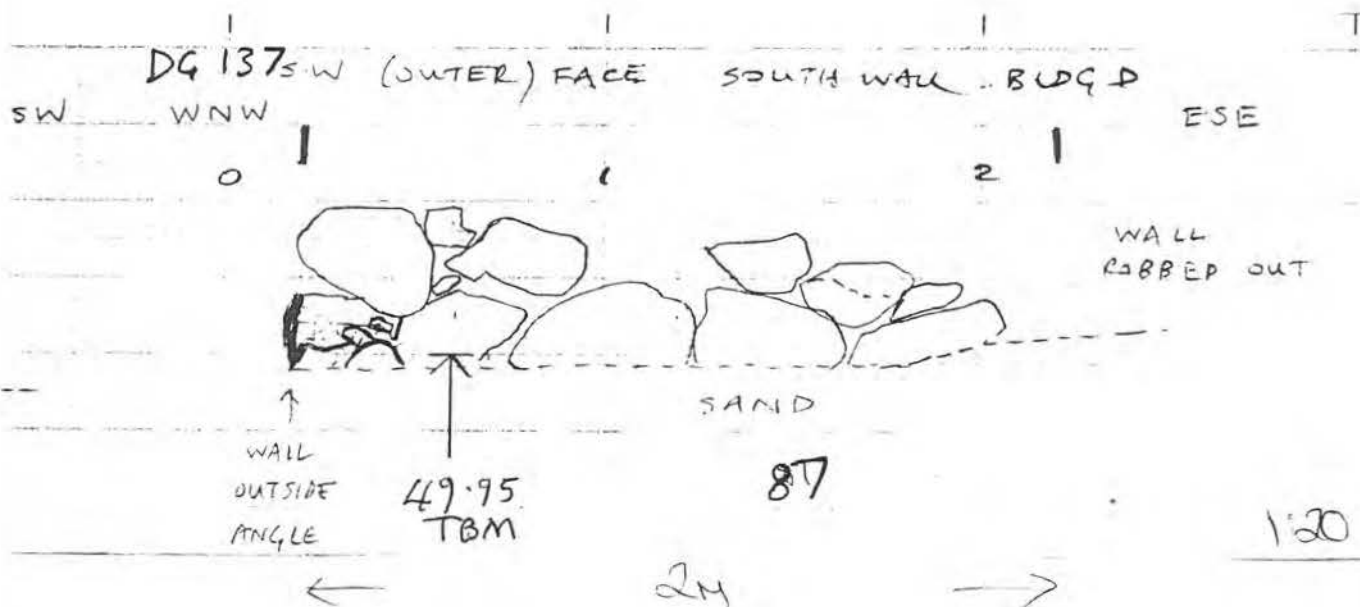
9-21



PHOTOGRAPHS - Film No./ Frame No.  
AFTER CONSERVATION

21-29



ELEVATION SKETCH/DRAWN/PHOTO[illegible]

SITE CODE G1504	SITE GRID REF NGR: Y/N	SITE SUB-DIV	CONTEXT NUMBER 87
CATEGORY/TYPE O/ENS			
BUILDING E	WALL NO.	INNER OUTER	
PHOTOGRAPHS - Film No./ Frame No. BEFORE CONSERVATION 9-31			



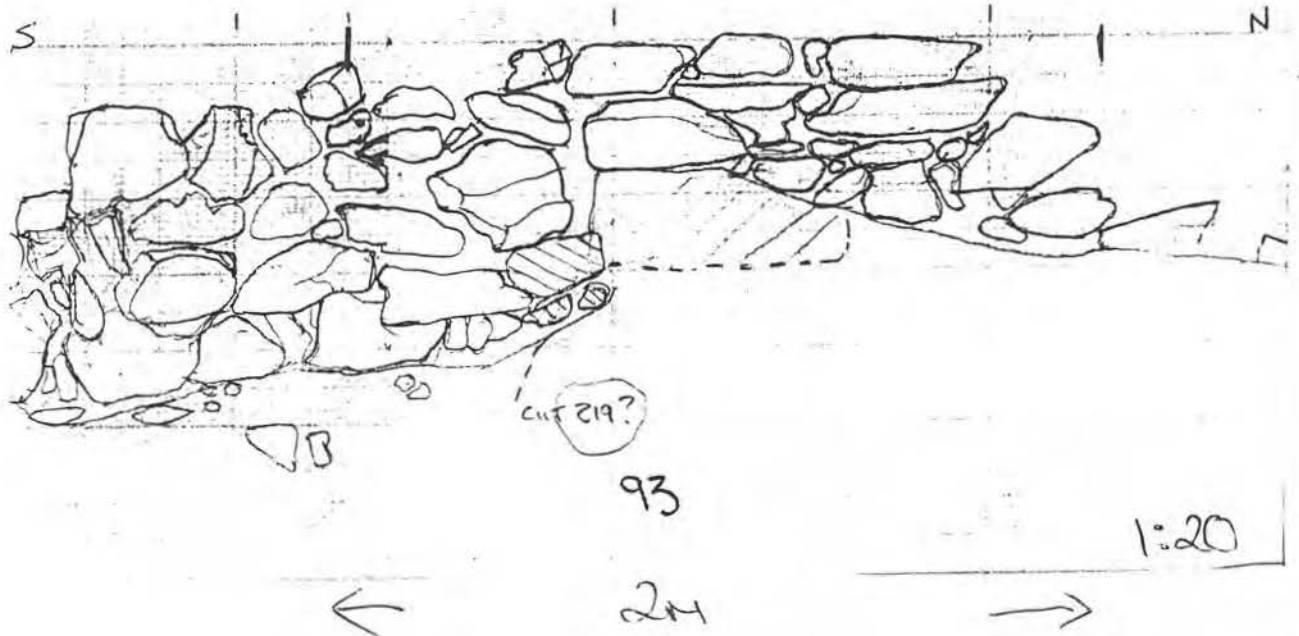
PHOTOGRAPHS - Film No. Frame No.  
AFTER CONSERVATION

29-3



ELEVATION SKETCH/DRAWN/PHOTO

EAST (OUTER) FACE OF PERIMETER WALL



ANS		SECTIONS/ELEVATIONS	
Sheet No.		Sheet No. 103	
Drawing No.		Drawing No. 88	
PHOTOGRAPHS - Film No./ Frame No.			
General _____			
Before 11-7			
After 29-15			
INTERPRETATION/DISCUSSION		PART OF	CONSISTS OF
Levels : see original site records.			
		ON D/BASE <input type="checkbox"/>	INITIALS/DATE EW / 12-7-99

SITE CODE G1504	SITE GRID REF NGR: Y/N	SITE SUB-DIV	CONTEXT NUMBER 93
CATEGORY/TYPE PERIMETER WALL			
BUILDING NEXT TO D	WALL NO.	INNER <u>OUTER</u>	
PHOTOGRAPHS - Film No./ Frame No. BEFORE CONSERVATION 11-7			

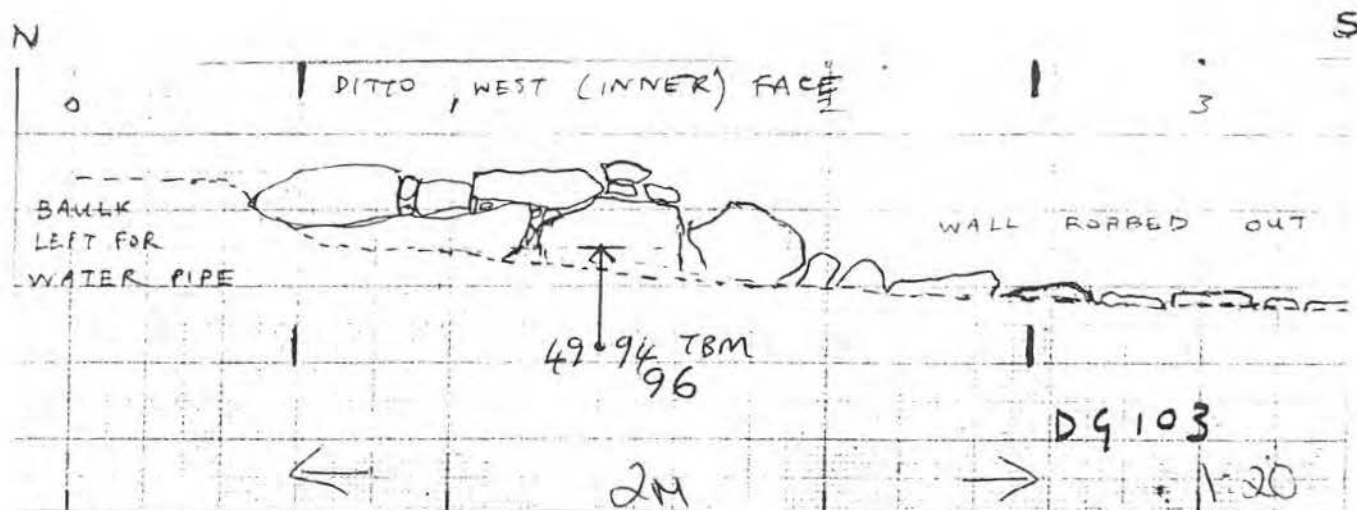


PHOTOGRAPHS - Film No./ Frame No.  
AFTER CONSERVATION 29-15



ELEVATION SKETCH/DRAWN/PHOTO

PERIMETER WALL, WEST INNER FACE.

[illegible]

SITE CODE G1504	SITE GRID REF NGR: Y/N	SITE SUB-DIV	CONTEXT NUMBER 96
CATEGORY/TYPE PERIMETER WALL			
BUILDING	WALL NO.	INNER OUTER	

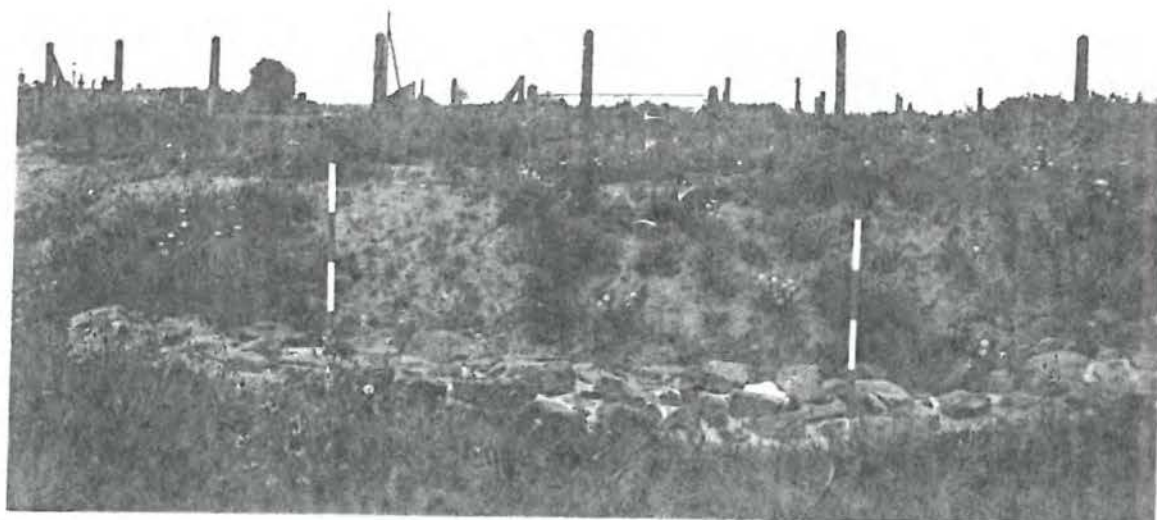
PHOTOGRAPHS - Film No./ Frame No.  
BEFORE CONSERVATION

11-13



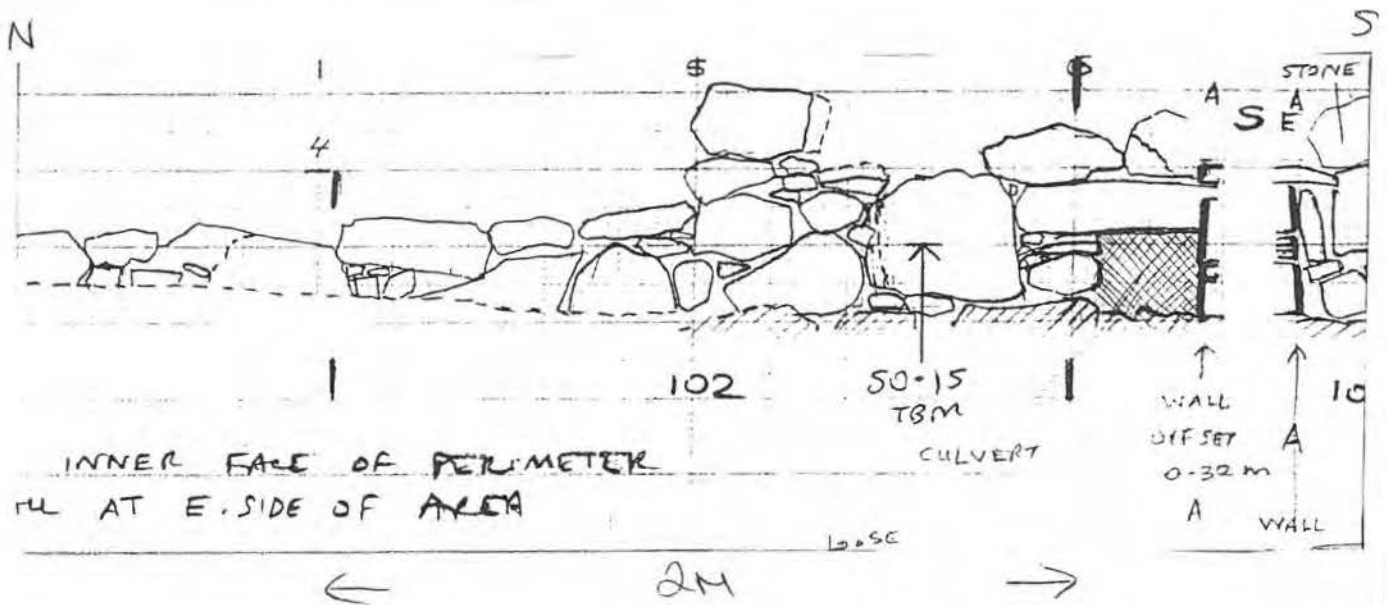
PHOTOGRAPHS - Film No./ Frame No.  
AFTER CONSERVATION

29-21



ELEVATION SKETCH/DRAWN/PHOTO

WEST INNER FACE OF PERIMETER WALL  
AT E. SIDE OF AREA.



1:20

ANS		SECTIONS/ELEVATIONS	
Sheet No.		Sheet No. 1106	
Drawing No.		Drawing No. 141	
PHOTOGRAPHS - Film No./ Frame No.			
General _____			
Before _____			
After _____			
INTERPRETATION/DISCUSSION		PART OF	CONSISTS OF
		ON D/BASE <input type="checkbox"/>	INITIALS/DATE CN / 7-799

SITE CODE G1504	SITE GRID REF NGR: Y/N	SITE SUB-DIV	CONTEXT NUMBER 102
CATEGORY/TYPE PERIMETER WALL			
BUILDING	WALL NO.	INNER OUTER	

PHOTOGRAPHS - Film No./ Frame No.  
BEFORE CONSERVATION

11-25



PHOTOGRAPHS - Film No./ Frame No.  
AFTER CONSERVATION

29-33

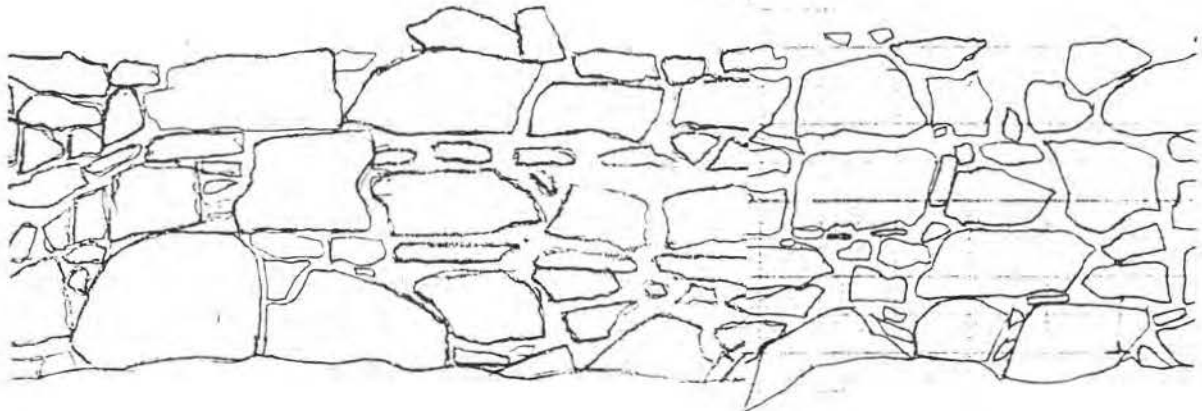


SITE CODE G1504	SITE GRID REF NGR: Y/N	SITE SUB-DIV	CONTEXT NUMBER 106
CATEGORY/TYPE PERIMETER WALL			
BUILDING	WALL NO.	INNER OUTER	

## ELEVATION SKETCH/DRAWN/PHOTO

EAST (OUTER) FACE OF PERIMETER WALL.

S



ANS

SECTIONS/ELEVATIONS

Sheet No.

Sheet No. 136

Drawing No.

Drawing No. 52

PHOTOGRAPHS - Film No./ Frame No.

General

Before

11-33

After

31-5

INTERPRETATION/DISCUSSION

PART OF

CONSISTS OF

Level 1; see original site record

ON D/BASE



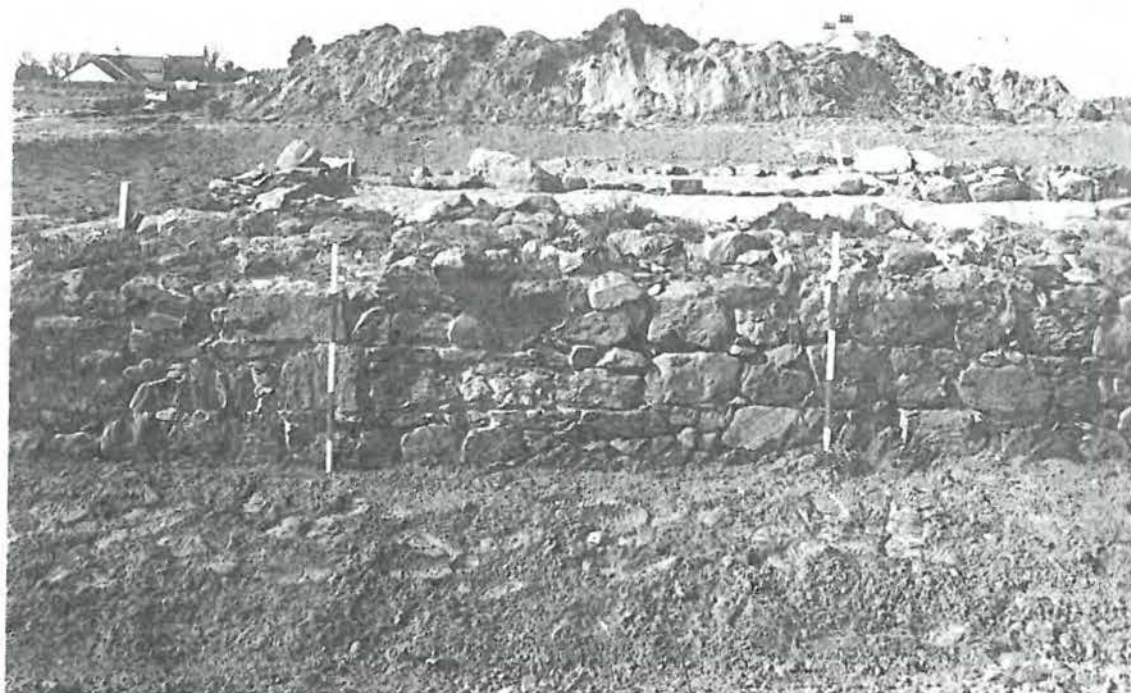
INITIALS/DATE

EK / 12-7-09

SITE CODE G1504	SITE GRID REF NGR: Y/N	SITE SUB-DIV	CONTEXT NUMBER 106
CATEGORY/TYPE PERIMETER WALL			
BUILDING	WALL NO.	INNER OUTER	

PHOTOGRAPHS - Film No./ Frame No.  
BEFORE CONSERVATION

11-33



PHOTOGRAPHS - Film No./ Frame No.  
AFTER CONSERVATION

31-5



A hand-drawn sketch of a geological profile. The profile is drawn with simple lines and is oriented horizontally. At the top left, there is a label 'S' and at the top right, a label 'N'. Below the profile, there are two vertical lines with arrows pointing outwards, labeled '112' and '1M'. At the bottom right, there is a label '1:20'. The profile itself shows a series of blocks and layers, with a large block on the left and a more complex, stepped structure on the right.

ANS		SECTIONS/ELEVATIONS	
Sheet No.		Sheet No. 135	
Drawing No.		Drawing No. 81	
PHOTOGRAPHS - Film No./ Frame No.			
General _____			
Before 13-11			
After 31-17			
INTERPRETATION/DISCUSSION		PART OF	
		CONSISTS OF	
Levels : see original site drawing,			
ON D/BASE		INITIALS/DATE	
<input type="checkbox"/>		ESD / 14799	

SITE CODE G1504	SITE GRID REF NGR: Y/N	SITE SUB-DIV	CONTEXT NUMBER 112
CATEGORY/TYPE PERIMETER WALL			
BUILDING	WALL NO.	INNER <u>OUTER</u>	

PHOTOGRAPHS - Film No./ Frame No.  
BEFORE CONSERVATION

13-11



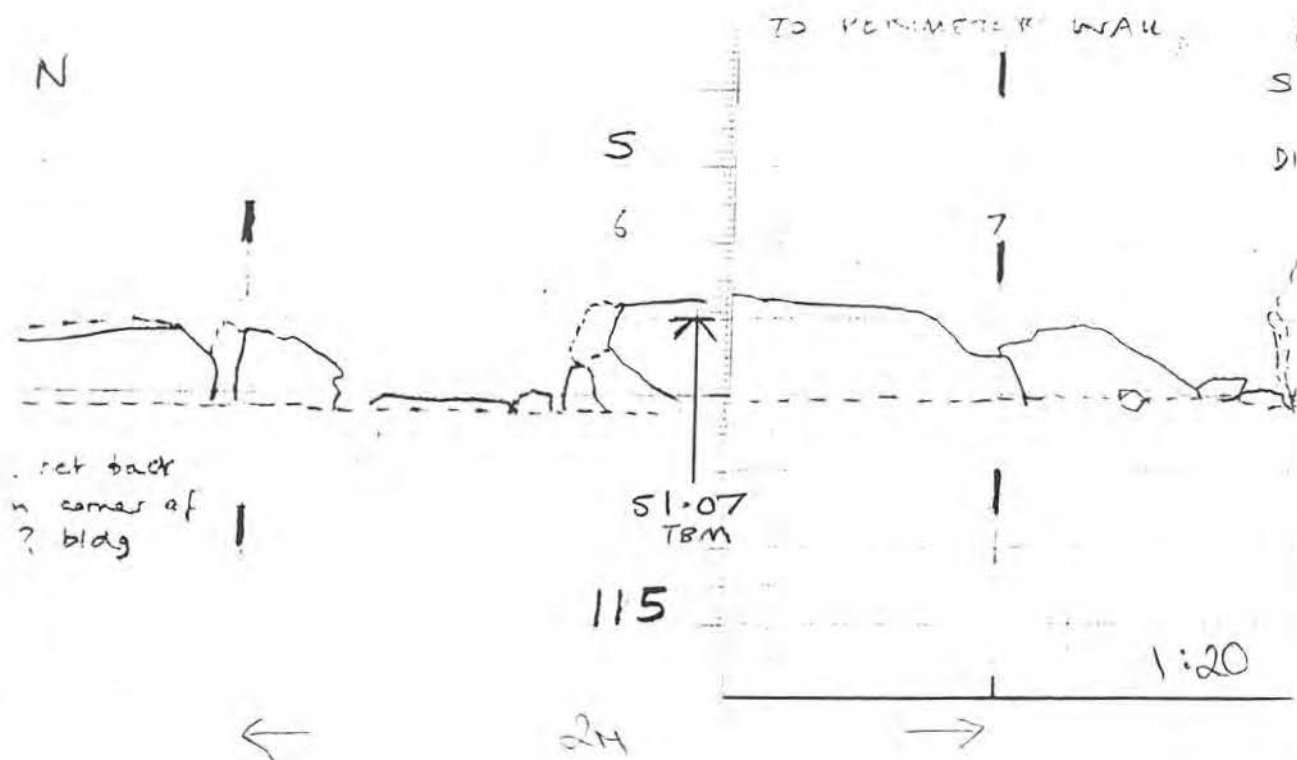
PHOTOGRAPHS - Film No./ Frame No.  
AFTER CONSERVATION

31-17



ELEVATION SKETCH/DRAWN/PHOTO

WEST ALTER FACE - BLOCK, C

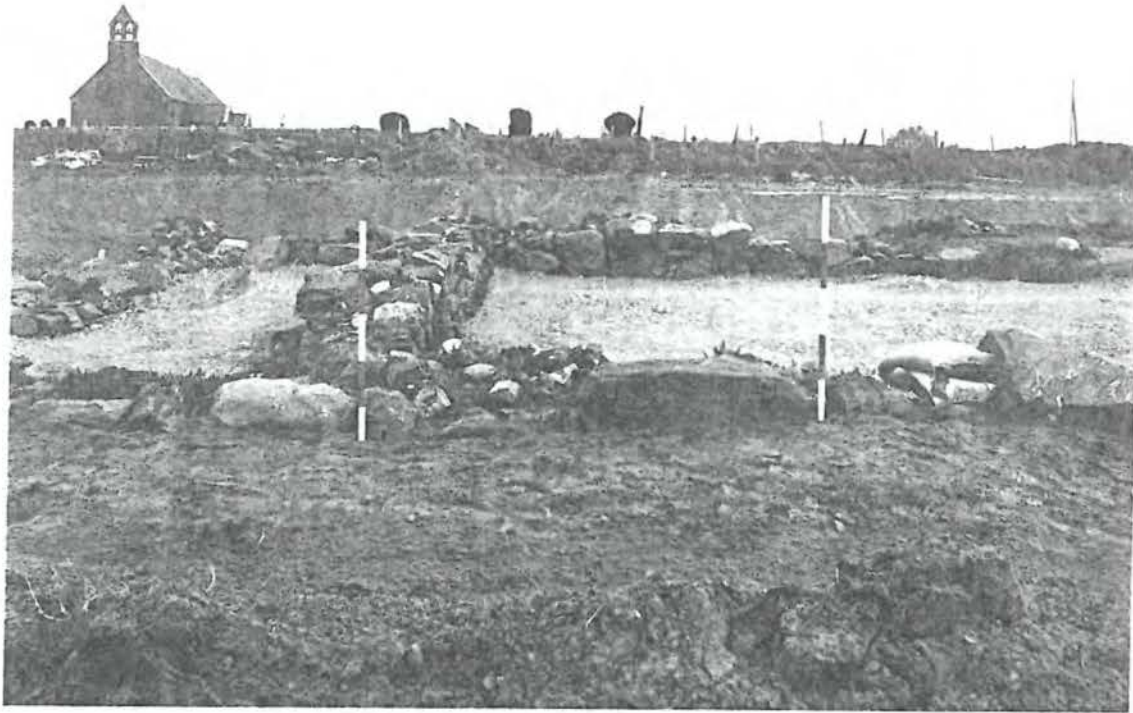


ANS		SECTIONS/ELEVATIONS	
Sheet No.		Sheet No. 164	
Drawing No.		Drawing No. 135	
PHOTOGRAPHS - Film No./ Frame No.			
General _____			
Before 13-17			
After 31-23			
INTERPRETATION/DISCUSSION		PART OF	CONSISTS OF
		ON D/BASE <input type="checkbox"/>	INITIALS/DATE EN 1/6799

SITE CODE G1504	SITE GRID REF NGR: Y/N	SITE SUB-DIV	CONTEXT NUMBER 115
CATEGORY/TYPE WALL SEG.			
BUILDING C	WALL NO.	INNER OUTER	

PHOTOGRAPHS - Film No./ Frame No.  
BEFORE CONSERVATION

13-17



PHOTOGRAPHS - Film No./ Frame No.  
AFTER CONSERVATION

31-23



SITE CODE G1504	SITE GRID REF NGR: Y/N	SITE SUB-DIV	CONTEXT NUMBER 119
CATEGORY/TYPE ENTRANCE			
BUILDING C	WALL NO.	INNER OUTER	

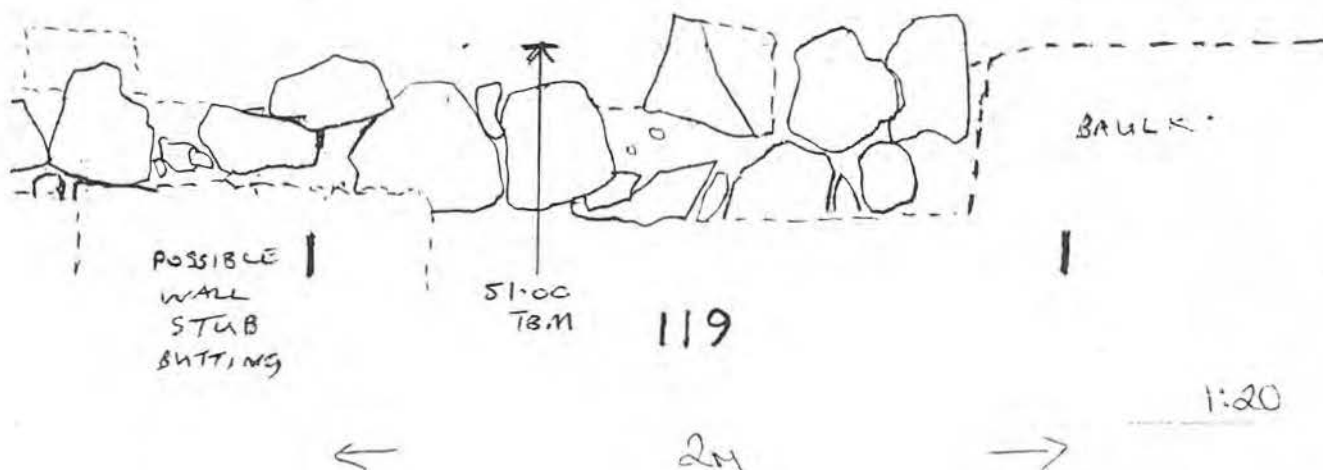
## ELEVATION SKETCH/DRAWN/PHOTO

NORTH OUTER FACE, BUILDING C

NORTH OUTER FACE 3 BLDG C

E

W



ANS

SECTIONS/ELEVATIONS

Sheet No.

Sheet No. 164

Drawing No.

Drawing No. 134

PHOTOGRAPHS - Film No./ Frame No.

General

Before 13-25

After 31-31

INTERPRETATION/DISCUSSION

PART OF

CONSISTS OF

ON D/BASE



INITIALS/DATE

EC / 6789

SITE CODE G1504	SITE GRID REF NGR: Y/N	SITE SUB-DIV	CONTEXT NUMBER 119
CATEGORY/TYPE ENTRANCE			
BUILDING C	WALL NO.	INNER <u>OUTER</u>	

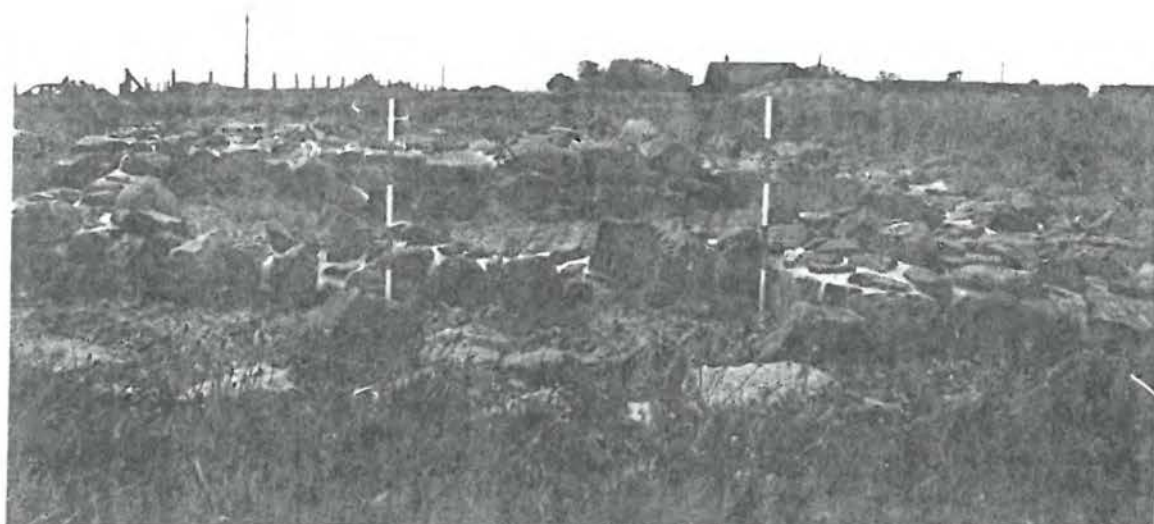
PHOTOGRAPHS - Film No./ Frame No.  
BEFORE CONSERVATION

13-25



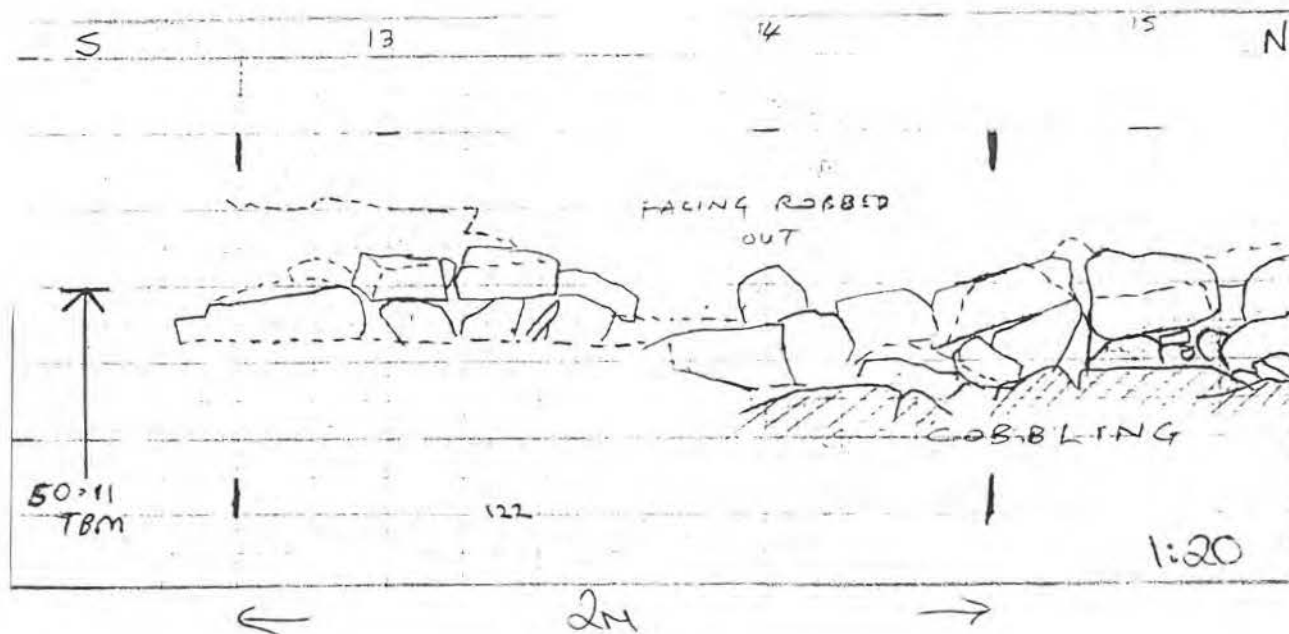
PHOTOGRAPHS - Film No./ Frame No.  
AFTER CONSERVATION

31-35



ELEVATION SKETCH/DRAWN/PHOTO

EAST (OUTER) FACE OF EAST WALL OF BUILDING

[illegible]

SITE CODE C1504	SITE GRID REF NGR: Y/N	SITE SUB-DIV	CONTEXT NUMBER 22
CATEGORY/TYPE WALL SEG			
BUILDING A	WALL NO.	INNER <u>OUTER</u>	

PHOTOGRAPHS - Film No./ Frame No.  
BEFORE CONSERVATION

13-31



PHOTOGRAPHS - Film No./ Frame No.  
AFTER CONSERVATION

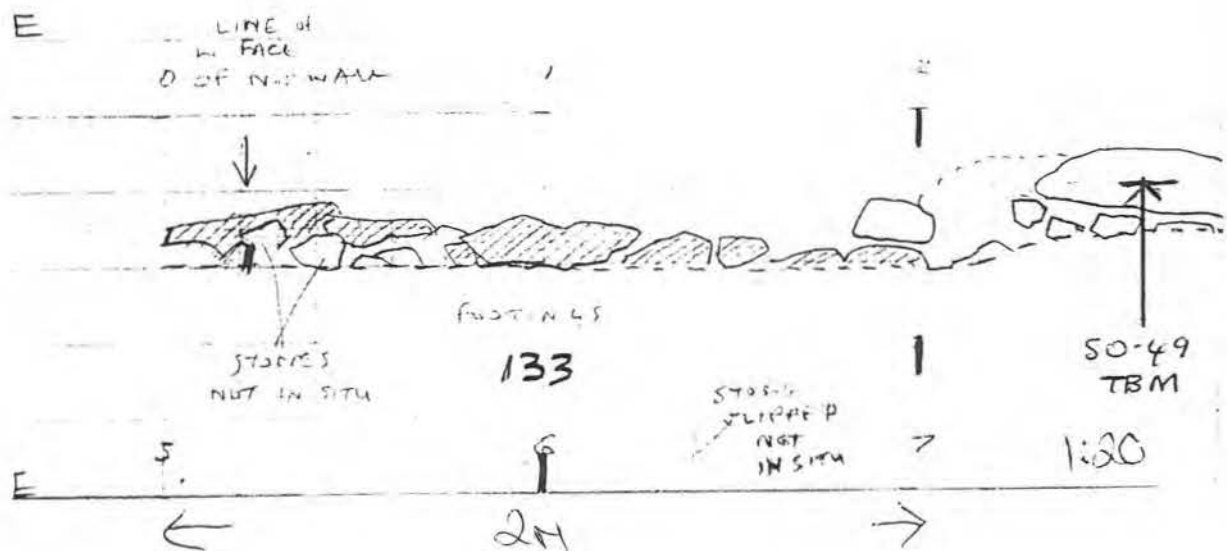
33-1



ELEVATION SKETCH/DRAWN/PHOTO

NORTH (INNER) FACE OF SOUTH WALL OF BUILDING A

NORTH (INNER) FACE OF SOUTH WALL OF RM



ANS		SECTIONS/ELEVATIONS	
Sheet No.		Sheet No. 154	
Drawing No.		Drawing No. 108	
PHOTOGRAPHS - Film No./ Frame No.			
General _____			
Before 15-19			
After 33-23			
INTERPRETATION/DISCUSSION		PART OF	
		CONSISTS OF	
		ON D/BASE <input type="checkbox"/>	INITIALS/DATE
			EW / 7799

SITE CODE G1504	SITE GRID REF NGR: Y/N	SITE SUB-DIV	CONTEXT NUMBER 133
CATEGORY/TYPE WALL SEG.			
BUILDING A	WALL NO.	INNER OUTER	

PHOTOGRAPHS - Film No./ Frame No.  
BEFORE CONSERVATION

15-19



PHOTOGRAPHS - Film No./ Frame No.  
AFTER CONSERVATION

33-23



ELEVATION SKETCH/DRAWN/PHOTO

PERIMETER WALL SE EAST (OUTER) FACE

S

Z

SE, EAST (OUTER) FACE

D9 102

INNER FACE

49.83 TBM

SAND

24

1:20

[illegible]

SITE CODE G1504	SITE GRID REF NGR: Y/N	SITE SUB-DIV	CONTEXT NUMBER 142
CATEGORY/TYPE PERIMETER WALL			
BUILDING	WALL NO.	INNER OUTER	

PHOTOGRAPHS - Film No./ Frame No.  
BEFORE CONSERVATION

17-1



PHOTOGRAPHS - Film No./ Frame No.  
AFTER CONSERVATION

35-3

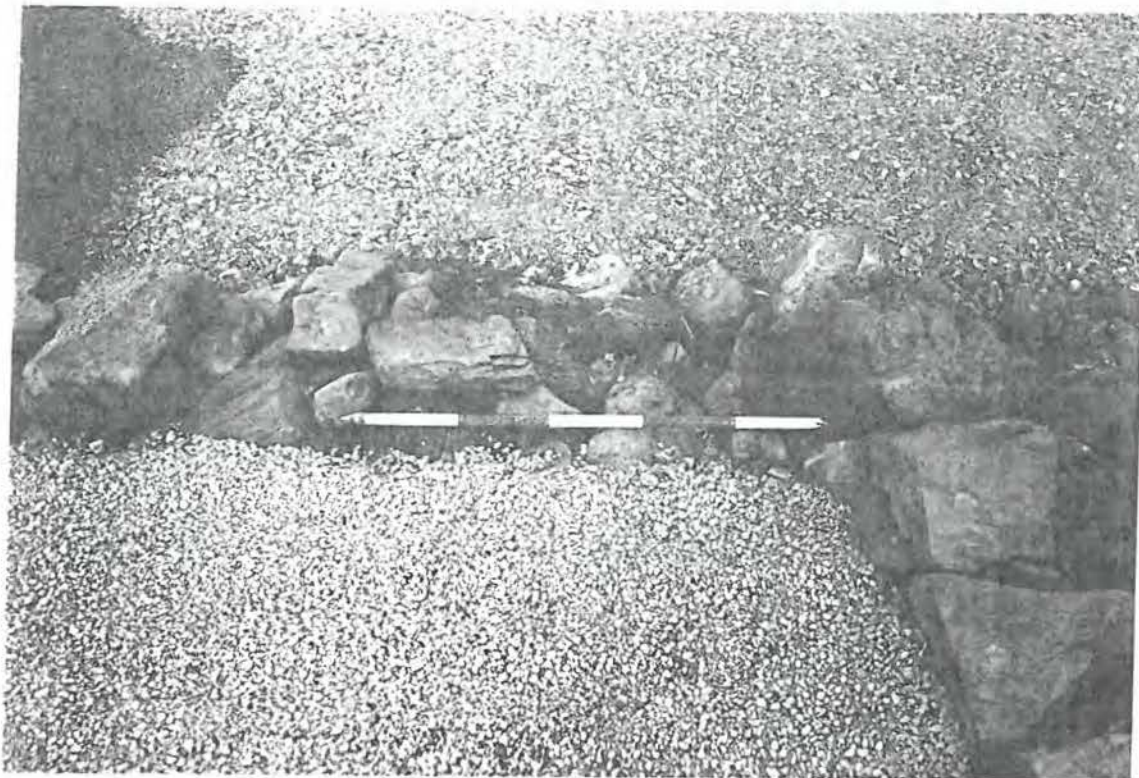


[illegible]

SITE CODE G1504	SITE GRID REF NGR: Y/N	SITE SUB-DIV	CONTEXT NUMBER 146
CATEGORY/TYPE WALL SEG			
BUILDING A	WALL NO.	<u>INNER</u> OUTER	

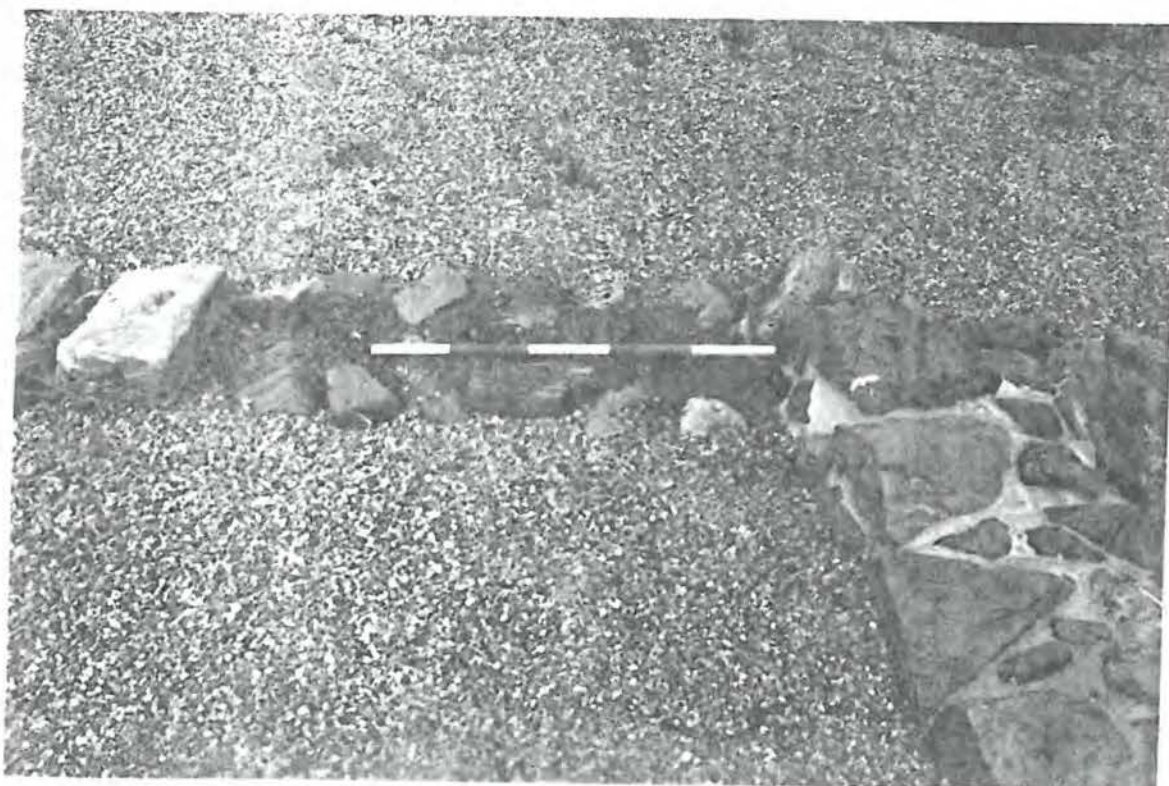
PHOTOGRAPHS - Film No./ Frame No.  
BEFORE CONSERVATION

17-9



PHOTOGRAPHS - Film No / Frame No.  
AFTER CONSERVATION

35-33



ELEVATION SKETCH/DRAWN/PHOTO

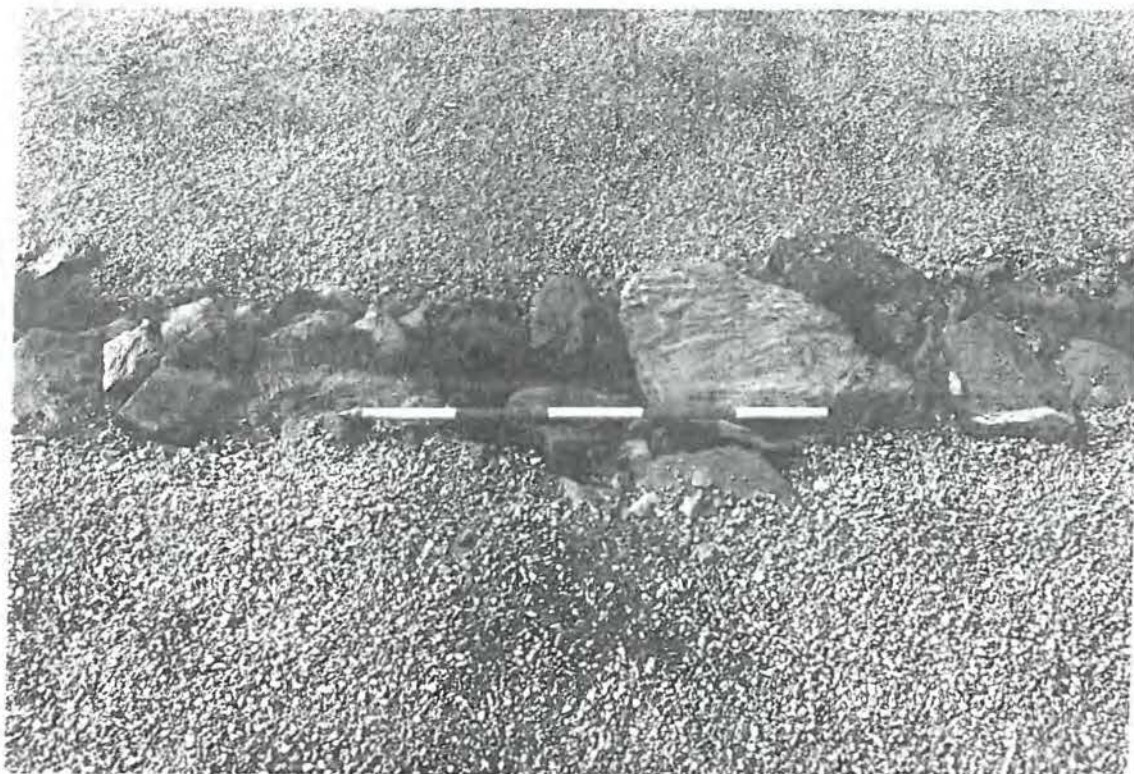
NO ELEVATION DRAWINGS MADE

[illegible]

SITE CODE G1504	SITE GRID REF NGR: Y/N	SITE SUB-DIV	CONTEXT NUMBER 150
CATEGORY/TYPE WALL SEG			
BUILDING A	WALL NO.	INNER OUTER	

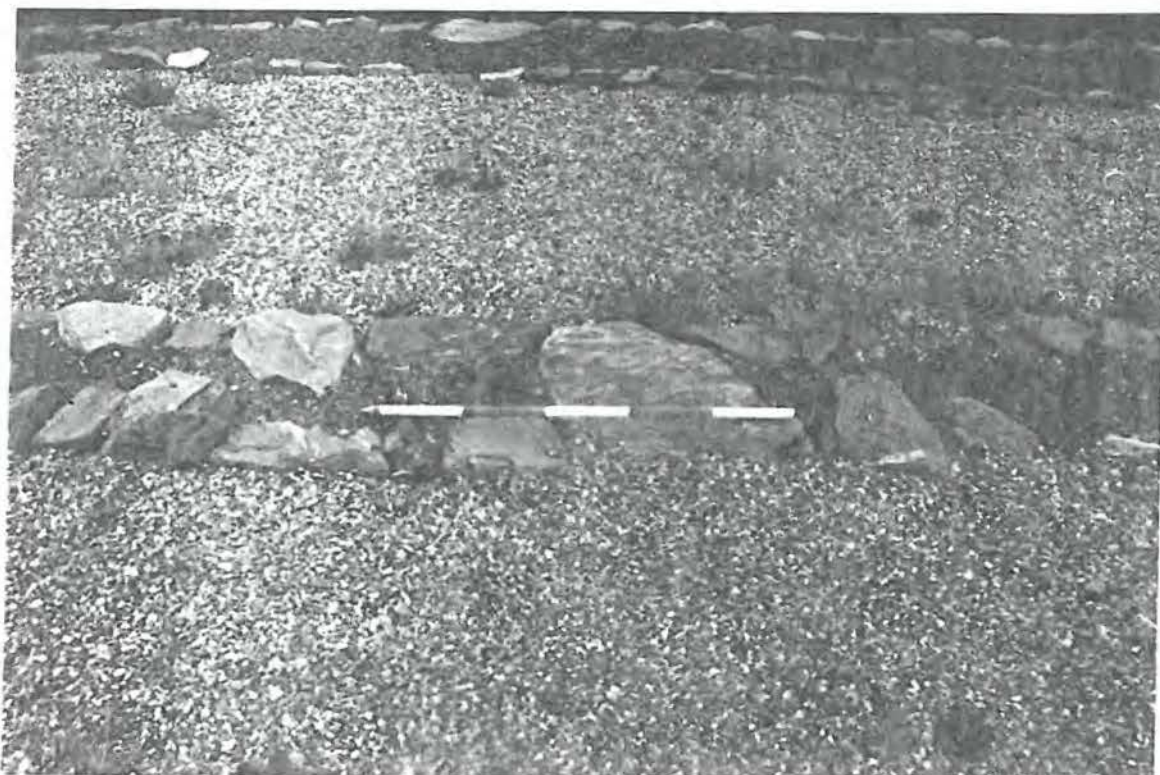
PHOTOGRAPHS - Film No./ Frame No.  
BEFORE CONSERVATION

17-17



PHOTOGRAPHS - Film No./ Frame No.  
AFTER CONSERVATION

35-21



SITE CODE G1504	SITE GRID REF NGR: Y/N	SITE SUB-DIV	CONTEXT NUMBER 153
CATEGORY/TYPE LINE OF BANK			
BUILDING NEXT TO B	WALL NO.	INNER OUTER	

## ELEVATION SKETCH/DRAWN/PHOTO

NO ELEVATION DRAWINGS MADE.

LOW FEATURE RECORDED IN PLAN ONLY

ANS

SECTIONS/ELEVATIONS

Sheet No.

Sheet No.

Drawing No.

Drawing No.

PHOTOGRAPHS - Film No./ Frame No.

General

Before

17-21

After

35-25

INTERPRETATION/DISCUSSION

PART OF

CONSISTS OF

Robbed out to footings

See original site plan.

ON D/BASE



INITIALS/DATE

EW / 14.7.99

SITE CODE G1504	SITE GRID REF NGR: Y/N	SITE SUB-DIV	CONTEXT NUMBER 158
CATEGORY/TYPE DRAIN			
BUILDING	WALL NO.	INNER OUTER	

## ELEVATION SKETCH/DRAWN/PHOTO



INS

SECTIONS/ELEVATIONS

Sheet No. 8 79  
Drawing No. 9 67

Sheet No.  
Drawing No.

PHOTOGRAPHS - Film No./ Frame No.

General

Before 41193 14-02, 14-03  
After

INTERPRETATION/DISCUSSION

PART OF

CONSISTS OF

The drain was left open after the excavation, leaving unstable sides. However, it was sand-bagged to try to stabilize the sides. Despite this, by the time of the consolidation work, the sides on the south had collapsed. The consolidation was therefore carried out using the 'before' photos from the excavation. The major stones were numbered on the original plan and identified & marked where possible on the ground, ready for reinstatement.

ON D/BASE



INITIALS/DATE

G147

SITE CODE 61504	SITE GRID REF NGR: Y/N	SITE SUB-DIV	CONTEXT NUMBER 158
CATEGORY/TYPE DRAIN			
BUILDING	WALL NO.		

PHOTOGRAPHS - Film No./ Frame No.  
BEFORE CONSERVATION

From the east.  
Perimeter wall and  
culvert in background.

SEE ALSO

CONTEXTS 91-92  
SHOTS 11-3 & 11-5



PHOTOGRAPHS - Film No./ Frame No.  
AFTER CONSERVATION

SEE CONTEXTS 91-92

SHOTS 29-11 & 29-13



Ymddiriedolaeth Archaeolegol Gwynedd  
Gwynedd Archaeological Trust

Craig Beuno, Ffordd y Garth, Bangor, Gwynedd LL57 2RT Ffon/Tel 01248 352535 Ffacs/Fax 01248 370925  
e-mail: [gat@heneb.co.uk](mailto:gat@heneb.co.uk) web site: [www.heneb.co.uk](http://www.heneb.co.uk)