

CWM CROESOR HYDRO ELECTRIC SCHEME
PHOTOGRAPHIC SURVEY

Report number : 309



Prepared for
NATIONAL POWER

October 1998

Ymddiriedolaeth Archaeoloegol *Gwynedd* Archaeological Trust
Craig Beuno, Ffordd y Garth, Bangor, Gwynedd LL57 2RT
Ffon : 01248 352535 Ffacs : 01248 370925

Event
PICN: 40469

CWM CROESOR HYDRO ELECTRIC SCHEME
PHOTOGRAPHIC SURVEY (G1566)

Report number : 309

Prepared for
NATIONAL POWER

October 1998

CWM CROESOR HYDRO-ELECTRIC SCHEME

PHOTOGRAPHIC SURVEY (G1566)

Prepared for NATIONAL POWER

1 INTRODUCTION

Gwynedd Archaeological Trust has been commissioned by National Power to undertake a photographic survey of the industrial archaeological features which would be affected by the Croesor hydro-electric scheme in Cwm Croesor. A photographic survey in accordance with the project design was undertaken in accordance with the project design on 9 September 1998.

2 METHODOLOGY

2.1 Photographic survey

A photographic survey of the proposed route of the Croesor hydro-electric scheme was undertaken by two members of Trust staff on Wednesday 9 September. The weather, mild on the valley floor, became progressively more inclement once the 400m contour was reached, and was not ideal for photography.

The route was walked to the reservoir dam (SH 6545 4665) to assess the features which needed recording. Relevant features were then photographed on 35 mm black and white film (Kodak Tmax 400 ASA). A 28 mm shift lens was available to minimise parallax distortion. The following views were taken:

- i) General views to place the structures within the context of their setting.
- ii) Views of all accessible internal and external elevations, taken at as close to an angle of 90° as possible, including either a 2m or 1m ranging rod marked into 0.5m sections.
- iii) Structural details, including 1m or 2m ranging rod as appropriate.

Selected views were also taken on colour film (Kodak Gold 200 ASA) and on colour slide (Kodachrome 200 ASA).

2.2 Photographic recording

Each view was recorded on photographic record sheets detailing the type of film, the specific location, a description of the feature, the scales used, and the direction from which the view was taken. The location and direction were then marked on OS map sheets SH64NW and SH64NE at a scale of 1:12500.

Separate records were used for the colour film and colour slide views.

3 PHOTOGRAPHIC INDEX

3.1 Colour negative

<u>Archive</u> <u>no.</u>	<u>Feature</u> <u>no.</u>	<u>Site</u>	<u>Description</u>	<u>Scale/s</u>	<u>View</u> <u>from</u>
1	3, 4	General	Power station, incline, tramway	/	SW - PRN: 60911
2	3, 4	General	Power station, incline, tramway	/	SW
3	3, 4	General	Power station, incline, tramway	/	NE
4	3, 4	General	Power station, incline, tramway	/	NE
5	7	General	Pipeline (course only)	/	NW - 60913
6	7	General	Pipeline (course only)	/	NW
7	7	General	Pipeline (course only)	/	E
8	7	General	Pipeline (course only)	/	E
9	5	General	Hand-winch, drumhouse	/	SE
10	8	General	Dam	/	N
11	8	General	Dam	/	NE
12	8	General	Dam 60914	/	N
13	8	General	Dam	/	NE
14	7	General	Pipeline pillars	/	W
15	7	General	Pipeline pillars	/	W
16	4, 7	General	Pipeline course, hand-winch, incline	/	NE
17	4, 7	General	Pipeline course, hand-winch, incline	/	NE
18	4, 7	General	Pipeline pillars, hand-winch, incline	/	NE
19	4, 7	General	Pipeline pillars, hand-winch, incline	/	NE
20	3, 4, 7	General	Pipeline, incline, power station	/	NE
21	3, 4, 7	General	Pipeline, incline, power station	/	NE
22	4	General	Incline 60913	/	SW
23	4	General	Incline	/	SW
24	3	General	Power station	/	NE
25	3	General	Power station	/	NE
26		General		2m	SE
27		General		2m	SE

3.2 Monochrome

3.2.1. Film 1

<u>Archive</u> <u>no.</u>	<u>Feature</u> <u>no.</u>	<u>Site</u>	<u>Description</u>	<u>Scale/s</u>	<u>View</u> <u>from</u>
1/1	8	Dam	Exposed stonework	1m+2m	NE
1/2	8	Dam	Exposed stonework	1m+2m	NE
1/3	8	Dam	Surface	2m	NW
1/4	8	Dam	Surface	2m	NW
1/5	8	Dam	Surface, breach	1m	SW
1/6	8	Dam	Surface, breach	1m	SW
1/7	8	Dam	Breach	2m	S
1/8	8	Dam	Breach	2m	S
1/9	8	Dam	Wall	2m	S
1/10	8	Dam	Wall	2m	S
1/11	7	Pipeline	Pillar	1m	SE
1/12	7	Pipeline	Pillar	1m	SW
1/13	7	Pipeline	Pillar	1m	SW
1/14	7	Pipeline	Pipe section	1m	NE
1/15	7	Pipeline	Pipe section	1m	NE
1/16	7	Pipeline	Pipe joint	2m	SE
1/17	7	Pipeline	Pipe joint	2m	SE
1/18	7	Pipeline	Pipe section	1m	SW
1/19	7	Pipeline	Pipe section	1m	SW
1/20	7	Pipeline	Pipe section, pillars	1m	NE
1/21	7	Pipeline	Pipe section, pillars	1m	NE
1/22	7	Pipeline	Pillars	1m	NE
1/23	7	Pipeline	Pillars	1m	NE
1/24	7	Pipeline	Pipe section	1m	SW
1/25	7	Pipeline	Pipe section	1m	SW
1/26	7	Pipeline	Pipe joint	1m	SE
1/27	7	Pipeline	Pipe joint	1m	SE
1/28	7	Pipeline	Anchorage	1m	N
1/29	7	Pipeline	Anchorage	1m	N
1/30	7	Pipeline	Hand-winch, pipeline course	/	NE
1/31	7	Pipeline	Hand-winch, pipeline course	/	NE
1/32	7	Pipeline	Hand-winch	1m	NE
1/33	7	Pipeline	Hand-winch	1m	NE
1/34	7	Pipeline	Hand-winch	1m	SW
1/35	7	Pipeline	Hand-winch	1m	SW
1/36	7	Pipeline	Hand-winch	1m	SE

3.2.2. Film 2

<u>Archive</u> <u>no.</u>	<u>Feature</u> <u>no.</u>	<u>Site</u>	<u>Description</u>	<u>Scale/s</u>	<u>View</u> <u>from</u>
2/1		Hand-winch	Hand-winch	1m+2m	NW
2/2	3, 4, 7	General	Pipeline, incline, power station	/	NE
2/3	3, 4, 7	General	Pipeline, incline, power station	/	NE
2/4	6	Caban	Roof	2m	S
2/5	5, 6	Incline	Caban roof, drumhouse	2m	S
2/6	6	Caban	NE gable wall	2m	NE
2/7	6	Caban	NE gable wall	2m	NE
2/8	6	Caban	NW longitudinal wall	2m	NW
2/9	6	Caban	NW longitudinal wall	2m	NW
2/10	6	Caban	SW gable wall	2m	SW
2/11	6	Caban	SW gable wall	2m	SW
2/12	4	Incline	Brake-stand	2m	SE
2/13	4	Incline	Brake stand, retaining wall	2m	SE
2/14	4	Incline	Brake stand, retaining wall	2m	SE
2/15	4	Incline	Brake stand, retaining wall	2m	SE
2/16	4	Incline	Brake stand, retaining wall	2m	SE
2/17	4	Incline	Brake stand, retaining wall	2m	SE
2/18	4	Incline	Brake stand, retaining wall	2m	SE
2/19	4	Incline	Brake stand, retaining wall	2m	SE
2/20	4	Incline	Crimp	2m	E
2/21	4	Incline	Crimp	2m	E
2/22	5	Drumhouse	Drumhouse	2m	SW
2/23	5	Drumhouse	Drumhouse	2m	SW
2/24	5	Drumhouse	Drum-bearing (internal view)	/	SE
2/25	5	Drumhouse	Drum-bearing (internal view)	/	SE
2/26	5	Drumhouse	Drum-bearing (internal view)	/	NW
2/27	5	Drumhouse	Drum-bearing (internal view)	/	NW
2/28	5	Drumhouse	Drum-bearing (internal view)	/	NW
2/29	5	Drumhouse	Drum-bearing (internal view)	/	NW
2/30	5	Drumhouse	Drumhouse	2m	W
2/31	5	Drumhouse	Drumhouse	2m	W
2/32	5	Drumhouse	Drum-bearing (external view)	1m	NW
2/33	5	Drumhouse	Drum-bearing (external view)	1m	NW
2/34	5	Drumhouse	Drumhouse wall	2m	NE
2/35	5	Drumhouse	Drumhouse wall	2m	NE
2/36	5	Drumhouse	Drumhouse wall	2m	E
2/37	5	Drumhouse	Drumhouse wall	2m	E

3.2.3. Film 3

<u>Archive</u> <u>no.</u>	<u>Feature</u> <u>no.</u>	<u>Site</u>	<u>Description</u>	<u>Scale/s</u>	<u>View</u> <u>from</u>
3/1	4	Incline	Retaining wall	1m	SE
3/2	4	Incline	Retaining wall	1m	SE
3/3	4	Incline	Retaining wall	1m	SE
3/4	4	Incline	Retaining wall, formation, pipeline site	1m+2m	SW
3/5	4	Incline	Retaining wall, formation, pipeline site	1m+2m	SW
3/6	4	Incline	Retaining wall, formation	1m	SE
3/7	4	Incline	Retaining wall, formation	1m	SE
3/8	2, 3, 4	General	Incline, tramway yard, power station	/	NE
3/9	2, 3, 4	General	Incline, tramway yard, power station	/	NE
3/10	4	Incline	Formation	/	SW
3/11	4	Incline	Formation	/	SW
3/12	3	Power station	NE gable wall	/	NE
3/13	3	Power station	NE gable wall	/	NE
3/14	3	Power station	NE gable wall, inlet	1m	NE
3/15	3	Power station	NE gable wall, inlet	1m	NE
3/16	3	Power station	SE longitudinal wall	1m+2m	SE
3/17	3	Power station	SE longitudinal wall	1m+2m	SE
3/18	3	Power station	SE longitudinal wall, bridge	1m+2m	SE
3/19	1	Tramway	Bridge	2m	E
3/20	1	Tramway	Bridge	2m	E
3/21	3	Power station	SW gable wall	2m	SW
3/22	3	Power station	SW gable wall	2m	SW
3/23	3	Power station	SW gable wall, NW longitudinal wall	2m	W
3/24	3	Power station	SW gable wall, NW longitudinal wall	2m	W
3/25	1	Tramway	Bridge	2m	W
3/26	1	Tramway	Bridge	2m	W
3/27	3	Power station	Outlet	2m	S
3/28	3	Power station	Outlet	2m	S
3/29	3, 4	General	Power station, incline	/	SW
3/30	3, 4	General	Power station, incline	/	SW



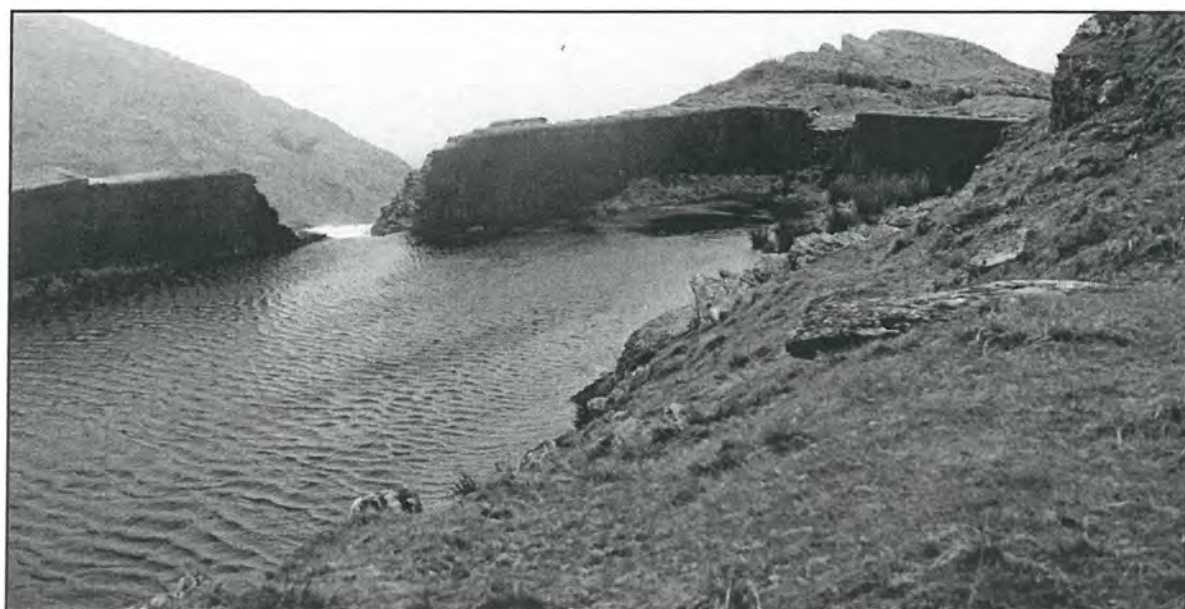
Tramway, power station and incline from the south west



Pipe, incline and power station from the north east



Power station from the south east



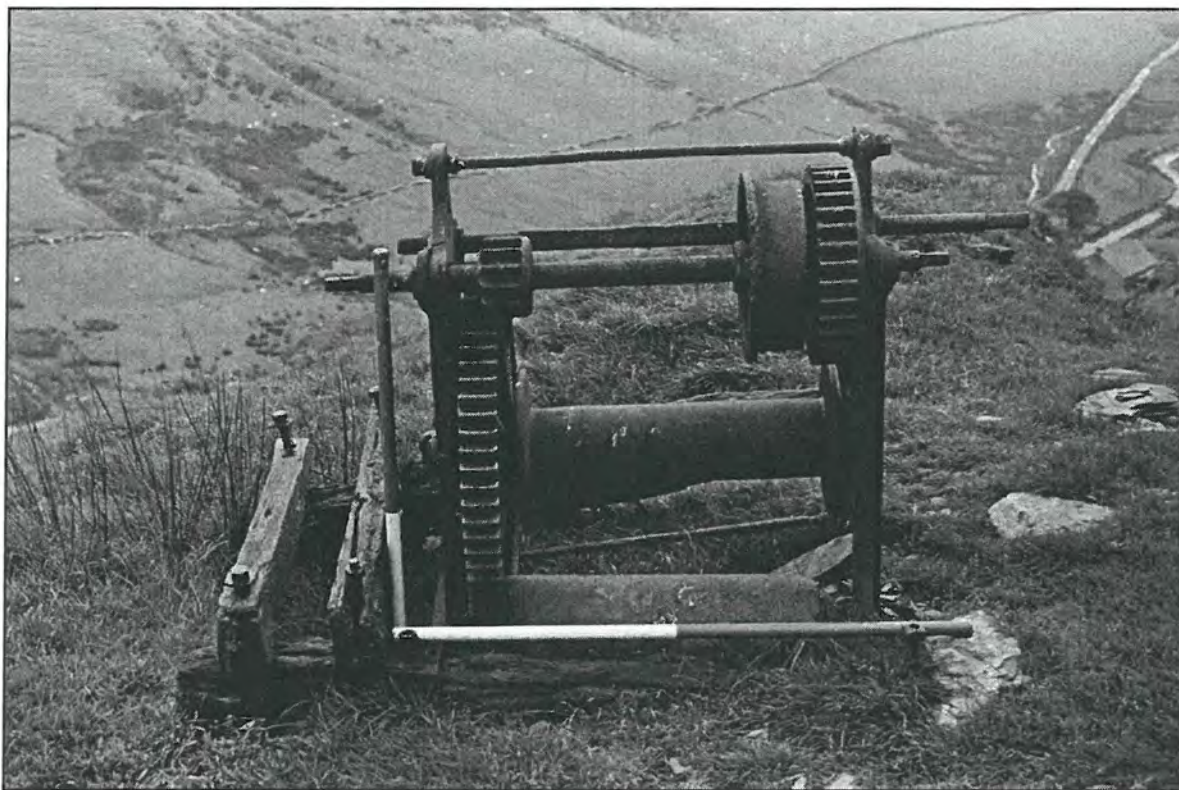
Dam from the north east



Internal view of drum bearing from the north west



Retaining wall of brakestand from the south east



Hand-winch from the north east



Join in pipe section from the south west

