

HER copy

GWYNEDD UPLAND SURVEY 1995 - 96

CADAIR IDRIS SSSI (PART)

G1322

REPORT AND GAZETTEER

Report no. 198 *A*

YMDDIRIEDOLAETH ARCHAEOLEGOL GWYNEDD  
GWYNEDD ARCHAEOLOGICAL TRUST

# GWYNEDD UPLAND SURVEY 1995 - 96

## CADAIR IDRIS SSSI (PART)

G1322

### REPORT AND GAZETTEER

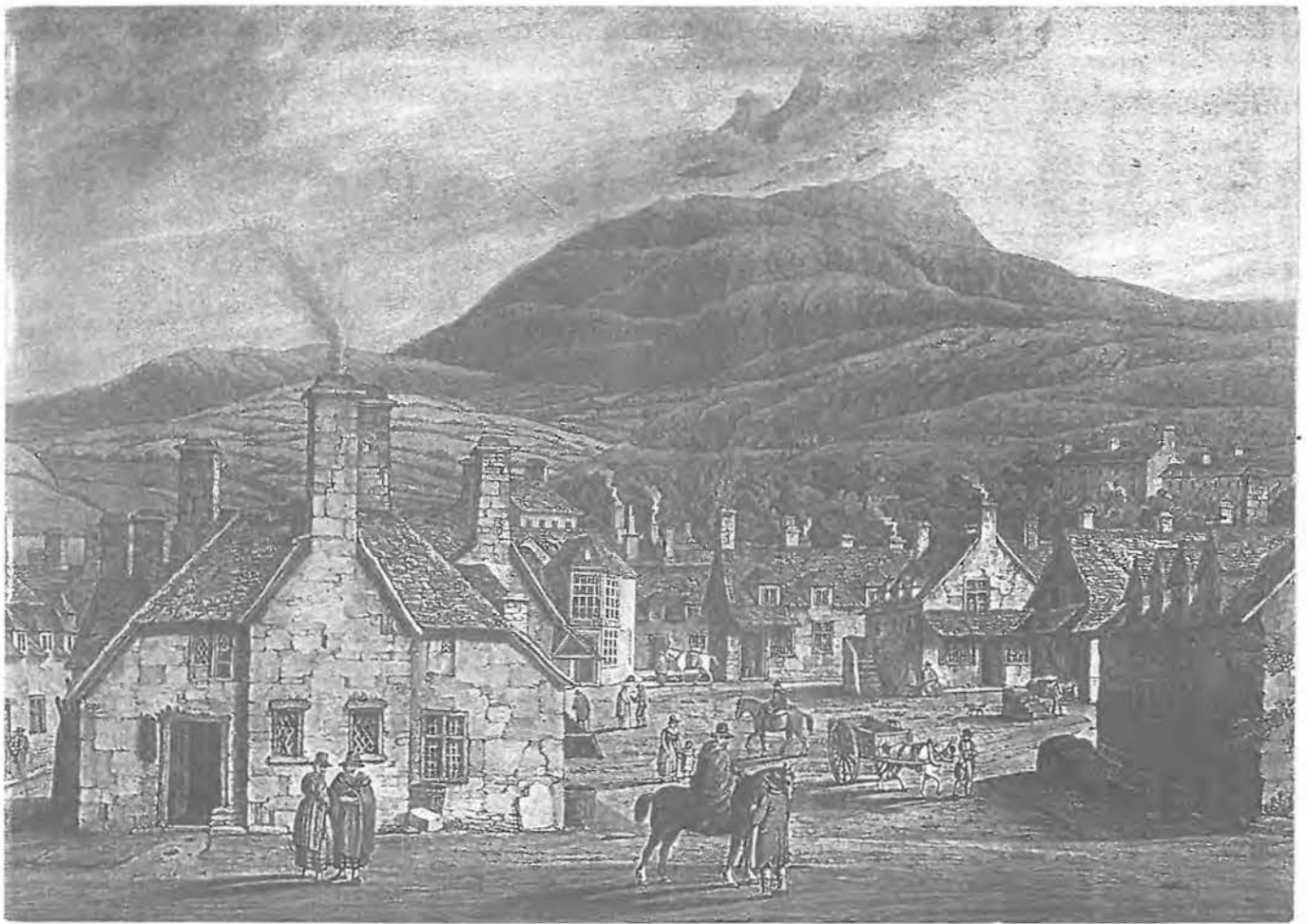
Report no. 198-A

Jones, S. + Thompson, D.

1996

YMDDIRIEDOLAETH ARCHAEOLEGOL GWYNEDD

GWYNEDD ARCHAEOLOGICAL TRUST



*Cadair Idris & Dolgellau c. 1800 J J DODD*

*'On the top of Cadair Idris I felt how happy a man might be with a little money and a sane intellect, and reflecting with astonishment and pity on the madness of the multitude.'*

T.L. Peacock - 'The Romance of the Welsh Mountains'

## CONTENTS

1	INTRODUCTION
2	BACKGROUND TO THE AREA
	2.1 General
	2.2 Geology and soils
	2.3 Topography
	2.4 Vegetation
	2.5 Conservation status
3	PROJECT METHODOLOGY SUMMARY
	3.1 Archive search
	3.1.1 Sources
	3.1.2 Known archaeology
	3.1.3 Industrial history
	3.2 Aerial survey
	3.3 Field survey
	3.4 Post field survey and data-base structure
4	SUMMARY OF RESULTS
5	ACKNOWLEDGEMENTS
6	BIBLIOGRAPHY

## APPENDICES

Appendix I - Site gazetteer

Appendix II - Site list from Gwynedd Sites and Monuments Record

Appendix III - Survey forms

Appendix IV - Schedule for tithe map

Appendix V - Placenames in the area

## MAPS (IN SEPARATE POCKET - A1 SIZE, FOLDED)

Map 1 Survey area showing topography, contours, streams, boundaries *etc.* and previously-known sites

Map 2 Survey area showing distribution of newly-discovered PRNs (and position of map 3)

Map 3 Showing two detailed insets where sites are concentrated

## 1 INTRODUCTION

- 1.1 Survey work has been undertaken during 1995 - 96 on the northern side of the Cadair Idris escarpment, below the peaks of Penygadair and Mynydd Moel, within the area of the Cadair Idris SSSI, as part of the Uplands Initiative funded by the Royal Commission on Ancient and Historical Monuments in Wales (RCAHM(W)).
- 1.2 The area forms the principal part of the largest 'purple block (areas with an overlap of three conservation designations) area' on the RCAHM(W)'s Upland Indicative Strategy Map and is thus a 'first priority area' for survey. It contained little in the way of recorded archaeology prior to survey (see map 1), although there were a number of 'possible' sites in the eastern part of the area recorded on the Sites and Monuments Record (SMR), as well as a series of hut circles centred on Llyn Gafr which had been discovered in the 1970s. However, a Trust pilot Upland Survey to the south-west on Mynydd Pencoed in 1988, and more especially survey work on National Trust property to the west of the area (around Llynau Cregennen), have shown the potential for archaeological fieldwork in this hitherto neglected part of the county.
- 1.3 This report considers the background, methodologies and results of a rapid, but intensive survey of the area, supported by a full appraisal of easily accessible documentary sources and an aerial survey.

## 2 BACKGROUND TO THE AREA

### 2.1 General

- 2.1.1 The area surveyed covered c. 10 square kilometres centred on SH725150 of the north-facing slopes of Cadair Idris, some four kilometres south-west of Dolgellau. It falls within the district of Meirionnydd and the community and parish of Dolgellau, and is wholly within Snowdonia National Park. During the medieval period the area lay within the administrative bounds of the cantref of Tal-y-Bont and the commote of Uwch Cregennan.
- 2.1.2 Much of the area is very rocky and marginal and at a considerable altitude, although there are enclosed fields, especially at either end of the area, and some woodland in the northern part. It was considered that the area had limited potential for the discovery of hitherto-unrecorded sites of archaeological interest, and that this would be concentrated at the eastern and western ends. This was borne out by the results of the survey.
- 2.1.3 Most of the area is privately-owned, eight owners being concerned (see acknowledgements below), although part of it is owned by the National Trust.

### 2.2 Geology and soils

- 2.2.1 The area around Cadair Idris is geologically complex, comprising mainly Cambrian and Silurian sedimentary strata with extrusive volcanic rocks and igneous intrusions. Ordovician volcanic strata form the summit of Cadair Idris, whereas the sedimentary rocks form the lower, gently-rounded and deeply dissected terrain. The oldest Cambrian sedimentary deposits consist mainly of turbiditic sandstones and mudstones, with the subsequent development of pillowed basalts and acid ash-flow tuffs through volcanic action. Later Ordovician and Silurian depositions were dominated by turbiditic, submarine fan deposition (Pratt *et al*, 1995).
- 2.2.2 Examples of well-formed glacial moraines, constructed of gravel and boulders of local lithologies, abound in the cwms about the summit, notably around Llyn Aran (Pratt *et al*, 1995, 91). Screes are also found along the main escarpment of Cadair Idris, below the peaks of Penygadair and Mynydd Moel (*ibid*, 90).
- 2.2.3 The soil is generally acidic in nature, with areas of (often considerable) peat growth on the gently sloping shelves below the Cadair Idris escarpment. This peat is up to 2m deep in places.

## 2.3 Vegetation

- 2.3.1 Cadair Idris has a rich flora which includes the prevailing grasslands of fescue as well as the northern-most population of hairy greenwood (*Genista pilosa*). Heaths of bilberry (*vaccinium myrtillus*) and montane moss are also represented, as are well developed acidic soligenous mires and blanket mire. On the lower northern slopes small areas of woodland include sessile oak (*quercus petraea*) (Kelly pers. comm.).

## 2.4 Topography

- 2.4.1 Topographically, the dominant feature of the area is the north-facing escarpment of Cadair Idris with the peaks of Penygadair and Mynydd Moel. The survey area lies at the foot of this escarpment, largely on a gently sloping natural plateau. On the northern edge of the area steep grasslands slope down towards the main drainage point of the northern escarpment of Cadair Idris - the Mawddach estuary. The area surveyed began at the 240m OD contour, and extended up to heights of c. 680m OD, after which the precipitous nature of the scree slope precluded any thoughts that it might hold archaeological remains.

## 2.5 Conservation status

- 2.5.1 The survey area falls within, as noted above, the largest 'purple block (areas with an overlap of three or more conservation designations) area' on the RCAHM(W)'s Upland Indicative Strategy Map.
- 2.5.2 The three 'conservation designations' which have been identified as relevant to this area are that (i) it falls wholly within Snowdonia National Park; (ii) it is within a *Tir Cymen* pilot area (*i.e.* Meirionnydd); and (iii) it is within a Site of Special Scientific Interest, known as Cadair Idris SSSI.
- 2.5.3 The Cadair Idris SSSI is described as being of outstanding geomorphological importance, and includes features such as the extensive Tal-y-llyn fault, several corries and narrow summit ridges. It is geologically complex and contains a range of plant communities, including several montane species at their southern British limit, as well as acidic soligenous and blanket mire. It also has ornithological interest and has long been used for research and teaching purposes.

## 3 PROJECT METHODOLOGY SUMMARY

### 3.1 Archive search

#### 3.1.1 Sources

- 3.1.1.1 Information concerning the known archaeological sites in the survey area and in the immediate vicinity was obtained from Gwynedd SMR and the Royal Commission's NMR records. Geological and pedological information was obtained from sources in the University of North Wales' library; while ecological information was obtained from the Countryside Commission for Wales (Bangor), especially with reference to the area's designation as an SSSI. Tour guides from the eighteenth and nineteenth century were also examined, as were the index cards at Gwynedd Archive Service in Dolgellau: these were unfortunately, of little help.
- 3.1.1.2 Copies of the most recent 1:10,000 maps for the area (which served as the basis for the fieldwork and report maps) were obtained from the SMR, while a copy of the 1901 1:10,560 scale Ordnance Survey Merionethshire sheet XXXVII (1938 edn.) map was consulted at the Gwynedd Archive Service (Dolgellau): this office also held the 1842 Dolgellau tithe map and schedule, part of which is reproduced in appendix IV. The National Library of Wales (Aberystwyth) provided copies of the 1891 1:10560 Ordnance Survey Merioneth sheet XXXVIII and the 1809-36 1" Ordnance Survey map. No estate maps were identified which covered the area under consideration.



- 3.1.1.3 A number of sheepfolds were drawn and named on the nineteenth century Ordnance Survey maps, although the earlier map was at too-small a scale to be very useful. The 1842 tithe map shows sub-rectangular strips of land running up the north-facing slopes of the area from the farms below. The boundaries tend to be represented as dotted lines when they reach the base of the escarpment, suggesting perhaps that they were not firmly established as physical entities on the ground. The field names reflect the farm to which they belonged (see appendix IV). The southern part of the area (*i.e.* the highest land) appears to have been open common.

### 3.1.2 *Known archaeology*

- 3.1.2.1 At the beginning of the desk-based work the SMR recorded seventeen archaeological sites in or around the survey area. These were -

PRN	Site	NGR
4104	Gold Torque (find)	SH71111590*
4110	Pastoral Enclosure	SH73551554
4113	House Platform	SH74351533
4761	Bronze Axe (find)	SH709-139-A*
4762	Enclosure?	SH70301426
4763	Settlement	SH70971427
4769	Settlement	SH71221420
4772	Settlement	SH71281413
4770	Settlement	SH71211425
4771	Settlement	SH71151421
4773	Settlement	SH71131429
20384	Slate Quarry	SH72001610
20386	Slate Quarry	SH72801600
20387	Slate Quarry	SH732-152-
20853	Level	SH727-140-
20864	Ironstone Mine	SH749-155-
20380	Slate Quarry	SH70401490

\* - just outside survey area

- 3.1.2.2 The recorded sites showed evidence of domestic and agricultural activity, medieval and post-medieval in date, on the lower slopes, and similar prehistoric activity around Llyn Gafr higher up. Industrial activity in the form of slate and iron stone quarries survived from the nineteenth century at the western and eastern ends of the area.

- 3.1.2.3 The two artefacts (bronze axe and gold torque) which have been found in the area appear to have come from the vicinity of traditional trackways, now footpaths; the bronze axe was found near the Fox's Path, the main public footpath over the escarpment, and the gold torque was found near an old drovers' road which led from Arthog to Dolgellau. These finds may suggest active use of these routes as far back as the late prehistoric period.

### 3.1.3 *Industrial history*

- 3.1.3.1 During the nineteenth century a number of exploratory and small-scale levels and quarries were excavated in the survey area, mainly aimed at the extraction of slate and ironstone deposits. This industrial activity is dominated by the Penrhyn Gwyn slate quarry (PRN 20380). This began as a small, unmechanised, open quarry and later developed on several levels underground (Richards, 1991, 160): a mill was built on the site but possibly never actually used. In 1883 output from the quarry was 250 tons, which was produced by 47 workers (Richards, *ibid*, 160).



### 3.2 Aerial survey

- 3.2.1 In preparation for the project, the area was flown and photographed from the air in August, in reasonable weather conditions (although it was a little hazy). The area was flown over several times and both general, 'landscape', photographs, as well as site-specific photographs (black and white negatives), were taken. These photographs were studied before actual field walking was undertaken, and the general views allowed areas of greater and lesser potential to be drawn up, and subsequent fieldwork effort concentrated on the areas with greater potential.
- 3.2.2 Colour vertical aerial photographs, taken by Geoscan in 1992, were also examined at the Countryside Commission of Wales, Bangor (Line 45 109 92 - 113 to 119, Line 44 109 92 - 256 to 253 and Line 43 110 92 - 011 to 015), as were black and white obliques aerial photographs from the 1950s and 1960s, including Cambridge University Collection, 1:5,000 (1960); Cambridge University Collection, 1:25,000 (1956, 57 and 55); and RAF Collection 543/RAF/922 24/5/60.
- 3.2.3 The RCAHM(W) undertook plotting of available aerial photographs of the area as part of its pilot scheme looking at developing methodologies for aerial mapping in Wales. Unfortunately coverage was not very good or extensive, and few new sites (some putative field systems on the lower slopes) and little additional information was forthcoming from this exercise. It was nevertheless worth undertaking, and similar work is recommended as a part of any future project.
- 3.2.4 The availability of these aerial photographs also aided the actual fieldwork, allowing sites to be more easily located on the ground, especially in the more open areas. They also helped orientation on the ground during fieldwork, and allowed informed decisions to be made on how to tackle certain areas.
- 3.2.5 The negatives and photographs from the GAT aerial survey are deposited in the Gwynedd Sites and Monuments Record under the project number G1322.

### 3.3 Field survey

- 3.3.1 The field survey was undertaken between September and December 1995, with some additional days in February 1996. The weather was mostly dry and clear, giving good visibility, with only a few days of wind and rain and low cloud. The survey was carried out by two members of Trust staff systematically walking the area enclosure by enclosure, concentrating on areas of greater potential which had been identified from aerial photographs. The sub-areas into which the survey was broken were for the most part fairly large, as there were few boundaries dividing up the area, although the eastern end especially contained a number of smaller enclosures.
- 3.3.2 Outside the few improved pasture fields along the northern, western and eastern edges of the area, the terrain was generally rough moorland, often wet and/or boggy. Bracken also posed quite a problem. In the upper reaches of the area, walking was often quite arduous. The central higher ridge which runs east-west across the centre of the area (some of which is National Trust land) was particularly difficult terrain, consisting of very rocky slopes covered in knee-high heather with very boggy areas to the north. Not surprisingly, few sites were recorded here.
- 3.3.3 All physical indications of human activity in the landscape (with the exception of walls recorded by the Ordnance Survey in the lower parts of the area) were recorded using a two-tier recording system (see appendix III). Those sites which were perceived as 'major' sites or monuments, such as settlements and associated enclosures, were recorded on full page site visit forms, allowing a range of detailed observations and sketch plans to be made in conjunction with a checklist of pre-determined attributes. Less important and complex landscape features (such as redundant field walls, banks, ditches, trackways and clearance cairns) were recorded on short form records which itemised only basic information about the features.
- 3.3.4 It had been the intention to record straight on to a hand-held computer, but old-fashioned paper forms were preferred in the end. When the weather was particularly poor, a micro-cassette recorder was used: a copy of the standard forms had been covered in plastic and information on each site was read onto tape in the

order of fields shown on these forms. These were then either added straight to the computer data-base, or copied on to forms and typed-in later.

- 3.3.5 The fieldwork maps that were used were copies of the Ordnance Survey 1:10,000 enlarged to 1:5,000: this is generally considered to be a sufficiently large scale for the purposes of this type of survey work. A number of items on these maps were then highlighted in different colours for easy recognition (*i.e.* the edge of the survey area, walls and other boundaries, known sites, suspected sites picked up from APs and other sources, the 50m contours, and areas of greater and lesser potential): maps of each separate sub-area (as defined by boundaries) were then covered in drawing film and fastened to small drawing boards. Site numbers and other notes (for example on land-use) were then written on these during fieldwork.
- 3.3.6 It was possible to locate most sites with a reasonable degree of accuracy (working from points recorded by the OS): however, there were a number of sites in the more open areas further up the mountain side where there were no nearby reference points and it was decided to try to locate these by using a Global Positioning System.
- 3.3.7 The system used was M.I.D.A.S. II (Mapping Information Database Acquisition System): this was chosen for a number of reasons, including ease of use, degree of accuracy, compatability with existing CAD systems within the Trust (and thus also with Fastmap - see below) *etc.* This operated in real time using a number of satellites and a fixed radio link with Point Lynas to record accurate grid references and heights, which were recorded automatically on a hand-held computer and downloaded in the office.
- 3.3.8 The system was not without its problems (including difficulties in obtaining and maintaining an adequate radio signal), but on the whole it was effective and useful and allowed most of the 'remote' sites to be pinpointed with considerable accuracy.

#### 3.4 Post field survey and database structure

- 3.4.1 The information on previously-known and 'new' sites gained from the survey was transferred from the original paper record (and/or tape) to a computerised database compatible with the Gwynedd SMR, and this now forms a satellite record within the SMR, along with previous Upland Surveys. A copy of this gazetteer is included as Appendix I. The relevant information was also transferred to the main SMR so that the records now form part of the Gwynedd SMR proper: a simple print-out from the SMR is included as appendix II.
- 3.4.2 The structure of the project database is -

Structure for database : C:\FPD26\SMR\CADAIR3.dbf

Number of data records:

Date of last update:

Field	Field Name	Type	Width
1	PRN	Numeric	5
2	NPRN	Numeric	5
3	SURVEY_NO	Numeric	5
4	SITENAME	Character	50
5	NGR	Numeric	11
6	OSMAP	Character	13
7	ALTITUDE	Numeric	4
8	DISTRICT	Character	21
9	COMMOUNC	Character	50
10	STATUS_NO	Character	8
11	SITESTAT	Character	5
12	AREASTAT	Character	8
13	CLASS	Character	30

14	SITETYPE	Character	40
15	PERIOD	Character	15
16	PERIODSPEC	Character	20
17	CENTURY	Character	7
18	FORM	Character	25
19	DESCTYPE	Character	50
20	CROSSREFS	Character	30
21	PERSON	Character	20
22	DATE	Character	4
23	UPDATE	Character	20
24	NOTES	Memo	10

\*Total\*\*

- 3.4.3 Maps of the survey area showing the previously known archaeological sites, streams, physical features and contour lines (every 50m) were produced by digitising the 1:10,000 OS map using AutoCAD and FastCAD 3D programs.
- 3.4.4 The locations of the newly-discovered sites were then added in one of two ways. The sites which had been located by reference to known boundaries *etc.* were simply transferred from the fieldwork maps to the digitised map. For those sites which had been accurately located using the GPS, a series of DXF files were created within the GPS software and transferred into FastCad3 where they were merged with the digitised information from the Ordnance Survey maps. This proved to be very effective.
- 3.4.5 The layering facility of the FastCAD 3D program allows for the visible manipulation of data and for future alterations or additions to be made to that data. The data thus held will also be capable of being transferred directly to FastMap (the G.I.S. programme currently being developed by RCAHM(W) and the Welsh Archaeological Trusts for use with the regional SMRs/END), either with the digitised background OS information or simply as PRNs.
- 3.4.6 All the original fieldwork forms and other material compiled during the survey is archived in the SMR under the project number G1322.

#### 4 SUMMARY OF RESULTS

- 4.1 The majority of the sites identified during the survey were (presumably) post-medieval agricultural structures (*i.e.* sheepfolds), forty eight of which were recorded, usually comprising dry-stone enclosures of one or two compartments. A number were situated adjacent to streams, suggesting possible use of the water source (*e.g.* for dipping): at least a couple had obvious direct access straight down in to a deep pool. Much smaller, often very simple, dry-stone structures were also identified. Their location, basic construction and size suggest possible use as lambing pens, shepherd shelters or, less likely, shooting butts.
- 4.2 A number of well-built dry-stone barns were also present on the lower slopes of the upland area. These buildings reflect the general pastoral nature of the recent land use of the area. Fragments of dry-stone field walls were also found on the intermediate ground between the improved land and upper *ffridd*, demonstrating the fluctuating nature of the exploitation of the marginal land in the past.
- 4.3 The main concentration of archaeological sites known prior to the survey was the hut circle settlement around Llyn Gafr. One definite new hut circle was recorded (PRN 13766), well-positioned on a small, raised, level area just above the lake on its south-eastern side. A small cairn (PRN 13752) was also noted on the flat peaty area to the north of the lake, apparently part of the settlement complex. A number of sub-oval stony mounds (PRN 13753) were also found in this area, although their precise purpose was unclear. The area around the lake was overlooked by a solitary standing stone (PRN 13764).
- 4.4 Eleven possible isolated hut circles were also identified in the survey area: in general they were not particularly well-preserved. A small group of perhaps two or three denuded hut circles, with associated field walls and terracing (PRN 13843), was located on the edge of *ffridd* in the north of the area. More detailed exami-

nation of the site was hindered by bracken and heather, and this is an area which would re-pay another visit. Apart from the hut circles around Llyn Gafr, and one possible isolated hut, none were found above the 400m contour. Information on the hut circles will be passed to the project officer presently carrying out the Gwynedd hut group assessment.

- 4.5 The most productive area, as predicted, was the valley at the eastern end of the survey area, just south of Bwlch-coch Farm. Here there was considerable evidence for the recent agricultural history of the valley, notably land improvements comprising drainage and field clearance. One possible denuded hut circle (PRN 13634) was recorded within this improved area, while an impressive standing stone (PRN 13645) was found at near the head of the valley. Although now partially obscured by trees, this would have been very noticeable from the valley below before the growth of the surrounding vegetation.
- 4.6 Just beyond this, up-slope, examination of the area around PRN 4113 revealed the presence of a nucleated platform settlement, consisting of five separate platforms within an area of c. 100m by 50m. (These had presumably been hidden in the bracken when the first site had been discovered, but recent cutting of the bracken had revealed their presence; there may be more features here, as there is still a considerable amount of bracken growth in the vicinity.) The platforms were on average 10m by 8m in size, often with low banks defining the sides. A hut circle (PRN 13890) was also located within this group, suggesting a possible continuity of occupation at this site. When visited these sites were still partially overgrown by bracken and at least one was suffering from vehicle erosion. This group of sites will be proposed for scheduling.
- 4.7 A number of other possible medieval domestic sites were identified, notable three *hafod* sites (PRNs 13798, 13619 and 13839). One (PRN 13619) was located in a classic position, within the *ffridd* adjacent to a stream, with two associated enclosures.
- 4.8 At a number of places, for example PRNs 13883 and 13877, suspected medieval domestic sites (long huts) appeared to have been built over by later dry-stone sheepfolds utilising the stone: the long huts survived only as stony platforms protruding from beneath the later structures. This appears to be very typical of most upland areas in Gwynedd.
- 4.9 Evidence of peat cutting was found on the higher ground, on the central ridge and in the eastern part of the area (e.g. PRNs 13654 and 13656). Sub-oval stony structures, sited on sloping ground, often in small valleys (PRNs 13597, 13609, 13880 and 13884), were also recorded in this eastern area and were interpreted as possible peat stacks.
- 4.10 Industrial activity in the survey area was represented by the large slate quarry, Chwarel Penrhyn-gwyn, on the western edge. To the east, a number of quarries, probably ironstone ones, were identified. Generally these were long linear trenches (adits?) cut into the slope, with exposed bedrock on their up-slope sides and associated spoil heaps down-slope or to the sides. The largest example of this type (PRN 13885) was accessed by a deeply cut but narrow trackway (PRN 13886), which ran down into the valley to the north, joining with the present day public footpath/bridle path. Its narrowness and general appearance would suggest the use of animals (mules or pack horses) to remove the ironstone.
- 4.11 The survey appears to show that, apart from the occupation around Llyn Gafr, past human activity on the northern slopes of Cadair Idris was restricted to the lower slopes, and anyway was governed by access to a water supply. There is evidence for settlement and exploitation during the prehistoric period, and some evidence for occupation of the higher slopes in the medieval period, but this may well have been largely seasonal. Later human activity revolved around pastoral farming and small scale quarrying.
- 4.12 The barren and inhospitable nature of much of the area has undoubtedly precluded any previous human occupation, but it is unknown whether any archaeological evidence lies buried below the (often considerable) depths of peat bog which cover extensive parts of the area. This would have to be revealed by more detailed and targeted work, involving auguring and environmental analysis.



## 5 ACKNOWLEDGEMENTS

- 5.1 The Trust would like to thank Mr A. Evans of Tyddyn Mawr, Mr A. Wynn Jones of Gilfachwydd, Mr Williams of Coed Croes, Mr Price of Tyddyn Carreg, Mrs A Pattison of Tyn Sarn, Mr Tudor of Plas y Brithdir, Mr Williams of Bwlch-coch, Mr Hughes of Pen y Bryn Garage, Dolgellau, and the National Trust for their assistance and allowing us access to their land.

## 6 BIBLIOGRAPHY

Bowen, E.G. and Gresham, C.A., 1967, *History of Merioneth*.

Davies, D., n.d., *Welsh Place-names and their meanings*.

Pennant, T., 1991, *A Tour in Wales*.

Pratt, W.T., Woodhall, D.G. and Howells, M.F., 1995, *Geology of the country around Cadair Idris*.

Richards, A.J., 1991, *A Gazetteer of the Welsh Slate Industry*.

Smith, B. and George, T.N., 1961, *British Regional Geology - North Wales*.

Stapleton, R.G., 1936, *A Survey of the Agricultural and Waste Lands of Wales*.

## **APPENDICES**

### **APPENDIX I : SITE GAZETTEER**



- | <u>PRN</u>   | <u>SITENAME</u>                               | <u>NGR</u>  |
|--|---|-------------|
| 13596  | STONE WALL, S OF GWERNAN LAKE HOTEL           | SH70481567C |
| A WALL CONSTRUCTED OF UNDRESSED STONES, ON AVERAGE 0.5M BY 0.3M IN SIZE, WITH EVIDENCE OF FACING STONES AND A RUBBLE CORE OF SMALLER STONES. APPROXIMATELY 30M LONG, 1M TO 1.2M WIDE AND A MAXIMUM HEIGHT OF 0.7M. IT IS ORIENTATED WNW - ESE.   |   |             |
| 13598  | SHEPHERD SHELTER, E OF TYDDYN MAWR FARM       | SH70871536  |
| A SMALL, 1.5M BY 1M, SUB-RECTANGULAR, PLATFORM, CUT INTO A SCREE SLOPE AT THE BASE OF AN OUTCROP. STONES REMOVED TO MAKE THE PLATFORM HAVE BEEN USED TO MAKE ROUGH TERRACING DOWNSLOPE AND BUILT-UP TO APPROXIMATELY 0.5M HIGH. IMMEDIATELY TO THE SOUTH THERE IS ANOTHER POSSIBLE NEGATIVE PLATFORM, 4M BY 3M, AGAIN POSSIBLY EXCAVATED OUT OF THE SCREE SLOPE, THIS ONE MAY BE NATURAL.                    |   |             |
| 13600  | SHEPHERD SHELTER, E OF TYDDYN MAWR FARM       | SH70801546  |
| A SUB-CIRCULAR PLATFORM, 1M IN DIAMETER, EXCAVATED IN A SCREE SLOPE. THE STONE REMOVED HAS BEEN USED TO TERRACE THE PLATFORM AND BUILD A ROUGH WALL, 1.5M HIGH, DOWNSLOPE.   |   |             |
| 13601  | WALL, NE OF TYDDYN MAWR FARM                  | SH70731557  |
| A ROUGH STONE WALL WITH NO APPARENT FACING, RUNNING IN A NE - SW DIRECTION DOWN A GULLY AROUND THE BASE OF AN OUTCROP. POSSIBLY PRESENT TO CONTAIN LOOSE SCREE UPSLOPE.  |   |             |
| 13602  | FARMSTEAD/HAFOD, SE OF TYDDYN MAWR            | SH70781523  |
| A DRY STONE, RECTANGULAR BUILDING CUT INTO A SLIGHT SLOPE WITH A POSSIBLE ENTRANCE IN THE NE WALL (CENTRAL). THE GABLE SURVIVE TO A HEIGHT OF APPROXIMATELY 3M, THE WALLS ARE 1.1M WIDE AND THE SIDE WALLS 2M HIGH. THE BUILDING INTERIOR IS APPROXIMATELY 3M BY 6M. TO THE NW THERE IS A SMALL, 3.5M BY 3.5M, PLATFORM, APPROXIMATELY 0.2M HIGH. ENCLOSURE WALLS RUN NW TOWARDS THE NE - SW ENCLOSURE WALL. |   |             |
| 13604  | WALL, SE OF TYDDYN MAWR FARM                  | SH70761522C |
| A WALL RUNNING NW - SE FROM THE FARMSTEAD 09 TO THE ENCLOSURE WALL TO THE NW. ROUGHLY FACED WITH A RUBBLE CORE IT IS 0.4M HIGH AND 1M WIDE. A RECENT BREAK IS PRESENT TO THE N.  |   |             |
| 13605  | SHEEP ENCLOSURES/PENS, SE OF TYDDYN MAWR FARM | SH70761529  |
| FOUR CONNECTED STONE ENCLOSURES ASSOCIATED WITH THE FARMSTEAD 09. ACCESS BETWEEN THEM IS THROUGH ENTRANCES (ONE BLOCKED) AND A SHEEP CREEP. A STREAM RUNS THROUGH ONE. THE NE - SW ENCLOSURE WALL APPEARS TO CHANGE COURSE TO RESPECT THESE ENCLOSURES.  |   |             |
| 13606  | WALL, SE OF DYFFRYDAN CADAIR IDRIS            | SH69711466C |
| A STONE WALL CONSTRUCTED WITH MASSIVE BOULDERS (1M BY 0.4M IN SIZE). IT HAS POSSIBLE RUDIMENTARY FACING AND IS APPROXIMATELY 40M LONG. 1.2M WIDE AND 0.6M HIGH. IT IS PARTLY OBSCURED BY BRACKEN, BUT IS 'OLD' IN APPEARANCE. ORIENTATED NE -SW.   |   |             |
| 13607  | LEAT?, SE OF DYFFRYDAN CADAIR IDRIS           | SH69681473  |
| A LEAT, RUNNING ACROSS THE SLOPE, WITH A SLIGHT BANK DOWNSLOPE, 0.1M HIGH. THERE IS A POSSIBLE TRIBUTARY AT THE W END, BUT THE LEAT DISAPPEARS INTO DENSE BRACKEN. IT IS APPROXIMATELY 30M LONG, 0.6M WIDE, 0.4M DEEP AND ORIENTATED NE - SW.  |   |             |
| 13608  | WALL, SE OF DYFFRYDAN CADAIR IDRIS            | SH69711471C |
| A VERY RUINED STONE WALL RUNNING PARALLAL WITH THE STREAM TO THE E. SOME POSSIBLE FACING SURVIVING, BUT IT DISAPPEARS INTO DENSE BRACKEN. IT IS 0.9M WIDE, 0.3M HIGH AND ORIENTATED SSE - NNW.   |   |             |
| 13610  | LEAT?, SE OF DYFFRYDAN CADAIR IDRIS           | SH69741467C |
| A POSSIBLE LEAT WITH A STONY BANK, 0.4M HIGH, DOWNSLOPE. IT IS ORIENTATED NE - SW.   |   |             |

PRN	SITENAME	NGR
13611	HUT CIRCLE, CADAIR IDRIS	SH69961467
A STONE DEFINED CIRCULAR FEATURE.<1>		
13612	HUT CIRCLE, CADAIR IDRIS	SH69961466
13613	WALL, SW OF CHWAREL PENRHYN-GWYN	SH70101472C
A DENUDED STONE WALL, ONE COURSE HIGH. A NUMBER OF STONES SET ON EDGE FORM FACING IN PLACES, GENERALLY THOUGH, THE FACING STONES ARE ON THEIR SIDES. IT RUNS DOWNSLOPE FROM AN OUTCROP, SHORTER LENGTHS OF SIMILAR WALLING ARE FOUND ON THE OUTCROP ITSELF. IT IS APPROXIMATELY 150M LONG, 1M WIDE, 0.4M HIGH AND ORIENTATED NW - SE.		
13614	TRACK, PONY PATH CADAIR IDRIS	SH69731468C
THE PONY PATH (A PUBLIC FOOT PATH) WHICH HAS SLATE BACKED STEPS IN PLACES.		
13615	ARTIFICIAL POOL, SW OF CHWAREL PENRHYN-GWYN	SH69901433
A STONY BANK DOWNSLOPE OF A TRIBUTARY, IT IS PARTIALLY GRASSED OVER AND RUNS TOWARDS AND ACROSS THE MAIN STREAM WHICH BREAKS THROUGH IT. IT HAS THOUGH FORMED A DAM. ADJACENT TO THE SUBSEQUENT POOL IS A SHEEPFOLD WHICH HAS AN ENTRANCE DIRETLY INTO THE POOL.		
13616	SHEEPFOLD, SW OF CHWAREL PENRHYN-GWYN CADAIR IDRIS	SH69961438
A DRY-STONE RECTANGULAR SHEEPFOLD BUILT ONTO THE FFRIDD WALL. THERE ARE TWO ENTRANCES OPPOSITE ONE ANOTHER AT EITHER END AND A SHEEP CREEP IN THE CENTRE OF THE FFRIDD WALL. IT IS APPROXIMATELY 21M BY 3M AND ORIENTATED NE - SW.		
13595	HUT PLATFORM, CADAIR IDRIS	SH70171437
A SUB-RECTANGULAR PLATFORM WITH THE REMAINS OF THREE GRASSED OVER WALLS. THE PLATFORM IS TERRACED DOWNSLOPE (STEPPED IN APPEARANCE) AND SCARPED INTO THE UPSLOPE. A POSSIBLE DRAINAGE HOOD IS LOCATED DIRECTLY ABOVE THE PLATFORM. THE ENTRANCE MAY BE ON THE SW SIDE OF THE PLATFORM, LEADING ONTO A LEVEL AREA.		
13619	POSS.HAFOD/LONG HUT, CADAIR IDRIS	SH70201428
A SUB-RECTANGULAR 3-SIDED STONE STRUCTURE, WITH A SMALLER VERY DENUDED STONE ANNEXE AT THE NW END.<1>		
13620	ENCLOSURE, SW OF CHWAREL PENRHYN-GWYN CADAIR IDRIS	SH70211426
JUST BELOW SURVEY NO. 28, ADJACENT TO THE STREAM ARE TWO SHORT LENGTHS OF DRY-STONE WALLS AT THE BASE OF AN OUTCROP, FORMING AN 'U'-SHAPED ENCLOSURE ORIENTATED N - S.		
13621	ENCLOSURE, SW OF CHWAREL PENRHYN-GWYN CADAIR IDRIS	SH70231425
A VERY ROUGH STONE WALL BUILT ACROSS A FLATISH SIDE VALLEY ADJACENT TO A STREAM, EXPLOITING NATURAL BOULDERS AND FORMING A 'U'-SHAPED ENCLOSURE APPROXIMATELY 10M BY 4M. ASSOCIATED WITH HAFOD SURVEY NO. 28 AND ENCLOSURE SURVEY NO. 29.		
13622	HUT PLATFORM/BARN, NR TYDDYN MAWR	SH70331531
A C19TH DRY-STONE RECTANGULAR BUILDING STANDING TO 2M HIGH. ONE DOORWAY E WALL. 4 ARROW SLIT TYPE WINDOWS, BLOCKED AND QUITE LOW DOWN. AT RIGHT ANGLES TO N END OF BUILDING IS A SUB-RECTANGULAR PLATFORM WHICH MAY BE A HUT PLATFORM. THE ENCLOSURE WALL (NO.32) LOOKS EARLIER THAN THE DRY-TONE BUILDING AND MAY BE ORIGINAL TO THE HUT PLATFORM.<1>		
4762	WALL, S OF CHWAREL PENRHYN-GWYN CADAIR IDRIS	SH70321429
A VERY DENUDED, CURVING STONE WALL, SURVIVING TO ONE COURSE IN HEIGHT. ROUGH FACING, SOME OF WHICH ARE ORTHOSTATS, IS VISIBLE. IT IS 0.9M WIDE AND 0.3M HIGH. THE AREA PARTIALLY ENCLOSED BY THE WALL IS STONY.		
13624	SHEEPFOLD COMPLEX, S OF CHWAREL PENRHYN-GWYN	SH70311426
A COMPLEX OF FIVE ATTACHED DRY-STONE ENCLOSURES, ASSOCIATED WITH SURVEY NO.'S 32 AND 31.		

PRN	SITENAME	NGR
13625	FIELD CLEARANCE, W OF BWLCH-COCH CADAIR IDRIS	SH74351591C
ALONG THE FOOT OF THE STONE WALL (35) ARE NON-DEFINED PILES OF STONE, PARTIALLY GRASSED OVER AND BETWEEN 0.4M AND 1M HIGH. IN SOME PLACES THE STONES SURROUND LARGE BOULDERS AND TREES.		
13626	CLEARANCE CAIRN, NW OF BWLCH-COCH CADAIR IDRIS	SH74241596
A SEMI-CIRCULAR PILE OF STONES, ALMOST COMPLETELY GRASSED OVER. LOCATED AT THE BASE OF FIELD WALL (SURVEY NO. 37).		
13627	CLEARANCE CAIRNS, NW OF BWLCH-COCH CADAIR IDRIS	SH74251605
TWO LARGE NATURAL BOULDERS SURROUNDED BY GRASSED OVER SMALLER STONES.		
13628	CLEARANCE CAIRNS, NW OF BWLCH-COCH CADAIR IDRIS	SH74241606
TWO CLEARANCE CAIRNS, ONE 4M BY 2M BY 0.7M AND THE OTHER TO THE SE IS BUILT AROUND NATURAL OUTCROPPING AND IS 10M BY 6M BY 1.5M.		
13629	CLEARANCE CAIRN, NW OF BWLCH-COCH CADAIR IDRIS	SH74221607
AN AREA OF NATURAL OUTCROPPING WITH SMALLER STONES PILED ABOUT. APPROXIMATELY 10M BY 8M BY 0.8M.		
13630	FIELD CLEARANCE, NE OF MAES-COCH CADAIR IDRIS	SH74351582
PILES OF STONES ADJACENT TO THE NW - SE RUNNING FIELD WALL.		
13631	CLEARANCE CAIRNS, E OF MAES-COCH CADAIR IDRIS	SH74441577A
AN AREA OF CLEARANCE CAIRNS, SOME VERY NEATLY CONSTRUCTED, APPROXIMATELY 10M BY 5M IN SIZE. OFTEN LOCATED BY THE PRESENCE OF TREES.		
13632	SHEEPFOLD, CADAIR IDRIS	SH74441572
A SUB-RECTANGULAR FEATURE, APPEARS TO BE CONSTRUCTED OF CLEARANCE MATERIAL.<1>		
13633	FIELD CLEARANCE, SE OF MAES COCH CADAIR IDRIS	SH74451566
AN AREA OF CLEARANCE CAIRNS.		
13634	POSS. HUT CIRCLE, CADAIR IDRIS	SH74441565
A SUB-CIRCULAR FEATURE OF SPACED LARGISH STONES. THE AREA IS COVERED IN CLEARANCE CAIRNS, WITH ONE ACTUALLY INSIDE THE CIRCLE.<1>		
13635	SHEEPFOLD, SE OF MAES-COCH CADAIR IDRIS	SH74531557
A SMALL SQUARE, DRY-STONE SHEEPFOLD LOCATED IN THE CORNER OF THE FIELD. NOW FULL OF RUBBISH.		
13636	SHEEPFOLD, SE OF MAES-COCH CADAIR IDRIS	SH74651573
TWO DRY-STONE SHEEPFOLDS BUILT ONTO THE FIELD WALL. VERY OVERGROWN.		
13637	WALL, SE OF MAES-COCH CADAIR IDRIS	SH74651548
A VERY DENUDED STONE WALL CONSISTING OF SINGLE LARGISH STONES (0.5M BY 0.4M IN SIZE) IN A ROW AND IN LINE WITH THE NE - SW FIELD WALL TO THE NE, AS THOUGH, IT WERE A CONTINUATION BUT APPEARS MUCH OLDER. IT IS 9M IN LENGTH, 0.6M WIDE, 0.4M HIGH AND ORIENTATED NE - SW.		
13638	WALL, SE OF MAES-COCH CADAIR IDRIS	SH74331575
THE REMAINS OF A STONE WALL UPSLOPE OF A TRACK. IT IS 20M LONG, 0.6M WIDE, 0.6M HIGH AND ORIENTATED NE - SW. UPSLOPE OF THE WALL A LEVEL AREA HAS BUILT UP, POSSIBLE DUE TO PLOUGHING.		
13639	CLEARANCE CAIRN, SE OF MAES-COCH CADAIR IDRIS	SH74351573
SMALLISH STONES PILED AROUND A NATURAL OUTCROP.		



<u>PRN</u>	<u>SITENAME</u>	<u>NGR</u>
13640	CLEARANCE CAIRN, SE OF MAES-COCH CADAIR IDRIS SMALLISH STONES PILED AROUND AN OUTCROP ADJACENT TO FIELD WALL.	SH74461563
13641	CLEARANCE CAIRN, S OF MAES-COCH CADAIR IDRIS A PILE OF STONES (1.5M BY 1M IN SIZE) ADJACENT TO A LARGE NATURAL BOULDER.	SH74331557
13642	CLEARANCE CAIRNS, SW OF MAES-COCH CADAIR IDRIS AN AREA OF PILES OF STONES, OFTEN AROUND OUTCROPPING. THEY HAVE NO STRUCTURE.	SH74251565A
13643	CLEARANCE CAIRNS, S OF MAES-COCH CADAIR IDRIS AN AREA OF PILES OF STONE, USUALLY AROUND OUTCROPPING AND NOW COVERED IN BRACKEN.	SH74351545
13644	STONE KERB, S OF MAES-COCH CADAIR IDRIS A ROW OF SINGLE STONES, PARALLEL WITH THE NW - SE FIELD WALL BUT 1M DOWNSLOPE OF IT. POSSIBLY REVETTING FOR A DRAIN/STREAM. IT IS 5M LONG, 0.3M WIDE, 0.2M HIGH AND ORIENTATED NW - SE.	SH74271541
13645	STANDING STONE, S OF MAES-COCH CADAIR IDRIS A LARGE ERECT STONE, APPROXIMATELY 1M SQUARE AND OVER 3M HIGH. THE FIELD WALL RUNS UPSLOPE OF IT, BUT CHANGES COURSE TO MEET IT. IT IS SITUATED AT THE HEAD OF THE VALLEY.	SH74301239
13646	SHELTER, CADAIR IDRIS A SMALL SUB-RECTANGULAR STONE DEFINED FEATURE, FORMED BY LARGISH STONES TO THE NORTH AND LARGE POSSIBLE NATURAL BOULDERS TO THE WEST & SOUTH.<1>	SH74271537
13647	SHEEPFOLD, CADAIR IDRIS A RECTANGULAR DRY-STONE STRUCTURE, BUILT ONTO A FIELD WALL. HAS AN ENTRANCE IN THE E WALL. A FURTHER SUB-RECTANGULAR ENCLOSURE IS SITUATED TO THE EAST,<1>	SH74281535
13648	ENCLOSURE, CADAIR IDRIS A STONE ENCLOSURE.<1>	SH74271535
13649	STONE BANK, S OF MAES-COCH CADAIR IDRIS A LOW DENUDED BANK, POSSIBLY A LYNCHET. IT IS IN LINE WITH THE E WALL OF THE SHEEPFOLD AND MAY TURN S AT THE E END INTO BRACKEN. IT IS 20M LONG, 1M WIDE, 0.35M HIGH AND ORIENTATED NNW - SSE.	SH74261533C
13650	WALL, S OF MAES-COCH CADAIR IDRIS A LOW, VERY DENUDED STONE WALL CURVING AROUND FROM SURVEY NO. 61 TO THE NW - SE FIELD WALL WHICH APPEARS TO POST-DATE IT. IT ALSO REVETS THE SLOPE SLIGHTLY. IT IS 0.7M WIDE AND 0.5M HIGH.	SH74271535
13651	CLEARANCE CAIRNS, S OF MAES-COCH CADAIR IDRIS THREE OR FOUR CLEARANCE CAIRNS FORMED AROUND NATURAL BOULDERS, POSSIBLY ASSOCIATED WITH THE PLATFORM HOUSE SETTLEMENT (SURVRY NO.'S 168,167,169 AND 170.	SH74357530
13652	WALL, N OF LLYN ARRAN CADAIR IDRIS A VERY RUINED WALL WITH SOME FACING STONES VISIBLE AND A RUBBLE CORE. FROM THE BASE OF OUTCROPPING TO THE SE IT FOLLOWS THE STREAM DOWN THE VALLEY ON THE NE SIDE. IT IS 1M WIDE AND BETWEEN 0.2M AND 0.4M HIGH. ORIENTATED SE - NW.	SH73931476C
13653	PEAT CUTTING, NE OF LLYN ARRAN CADAIR IDRIS A SUB-RECTANGULAR DEPRESSION WITH FAIRLY STRIAIGHT AND VERTICAL SIDES, FORMING A SMALL LEDGE ON THE EDGE OF A RIDGE SLOPE. IT IS 3.5M BY 2M, 0.3M DEEP AND ORIENTATED SW - NE.	SH74111474

<u>PRN</u>	<u>SITENAME</u>	<u>NGR</u>
13654	SHEPHERD SHELTER/SHEEPFOLD, NE OF LLYN ARRAN	SH74131474
A SUB-RECTANGULAR STONE DEFINED FEATURE, 2M BY 1.2M, BUILT AMONGST AN AREA OF SCREE. THE SCREE HAS BEEN CLEARED FROM THE CENTRE AND USED TO BUILD UP A LOW ROUGH WALL, 0.4M HIGH, UPSLOPE. ORIENTATED SSE - SSW.		
13655	SHEEPFOLD, CADAIR IDRIS	SH74131474
SITUATED ON THE EDGE OF A PEATY AREA. 3.5M X 7M EXTERNALLY. POSSIBLE A SHELTER OR PEAT HOUSE.<1>		
13656	PEAT CUTTING, NE OF LLYN ARRAN CADAIR IDRIS	SH74201475A
A PEATY AND WET AREA OF SMALLISH (3M BY 2M) VERTICALLY SIDED DEPRESSIONS. THERE ARE ALSO A COUPLE OF OVERGROWN MOUNDS (0.5M HIGH) WHICH MAY BE PEAT STACKS.		
13657	SHEPHERD SHELTER, NE OF LLYN ARRAN CADAIR IDRIS	SH74021457
A PROBABLY SHEPHERD'S SHELTER EXCAVATED OUT OF SCREE SLOPE. SUB-RECTANGULAR IS SHAPE (1.2M BY 0.7M) WITH THE STONE REMOVED TO FORM THE LEVEL AREA PILED DOWNSLOPE AS REVETTING 0.8M HIGH.		
13658	ENCLOSURE, NE OF LLYN ARRAN CADAIR IDRIS	SH74001445
A SHORT LENGTH OF DRY-STONE WALLING (1M HIGH) CURVING AROUND THE BASE OF OUTCROPPING FORMING A SUB-RECTANGULAR ENCLOSURE WITH ONE POSSIBLE ENTRANCE AT THE N END. IT IS 5M BY 1M AND ORIENTATED N - S.		
13659	SHELTER?, NE OF LLYN ARRAN CADAIR IDRIS	SH73991448
A SHORT LENGTH OF ROUGH DRY-STONE WALLING (2M LONG, 0.5M WIDE AND 0.8M HIGH), RUNNING PARALLEL WITH THE CONTOURS OF THE SLOPE. THE AREA UPSLOPE OF THE WALL HAS BEEN FILLED FORMING A LEVEL AREA WITH THE WALL ACTING AS REVETTING.		
13660	SHEPHERD SHELTER	SH73941440
A SMALL LEVEL AREA, 2M BY 1M, FORMED BY THE REMOVAL OF STONE FROM THE SCREE SLOPE AND FORMING REVETTING DOWNSLOPE.		
13661	?ENCLOSURE, CADAIR IDRIS	SH73911420
VERY ROUGH WALLS WITH SOME FACING STONES, 1M WIDE AND 1M HIGH. DIMENSIONS 21M X 17M INTERNALLY.<1>		
13662	WALL, NE OF LLYN ARRAN CADAIR IDRIS	SH73911417
A NICELY MADE SHORT LENGTH OF DRY-STONE WALLING 3M LONG, 0.8M WIDE AND 0.8M HIGH. AT THE NW END IT BUTTS A MASSIVE NATURAL. THE WALL MAY BE ACTING AS A SHEEP SHELTER. IT IS ORIENTATED NW - SE.		
13663	STONE BANK?, NE OF LLYN ARRAN CADAIR IDRIS	SH73801409C
A LONG, FLAT TOPPED RIDGE WITH VERTICAL SIDES, RUNNING DOWN THE SLOPE. IT APPEARS TO CONSIST OF SCREE/LOOSE STONE AND MAY BE A NATURAL SCREE FEATURE, BUT IT DOES NOT FAN OUT TOWARDS ITS BASE AND ITS SIDES ARE VERTICAL. IT IS 40-50M LONG, BETWEEN 8M TO 9M WIDE AND 1M HIGH.		
13664	SHEPHERD SHELTER, NE OF LLYN ARRAN CADAIR IDRIS	SH73791406
A SMALL, WELL BUILT DRY-STONE SHELTER, BUTTING AN OUTCROP. IT HAS A STONE LINTEL OVER THE ENTRANCE AND THE REMAINS (ALMOST INTACT) OF A STONE CORBELLED ROOF. IT IS APPROXIMATELY 1M BY 1M, WITH AN INTERNAL HEIGHT OF 1.2M.		
13665	SHEPHERD/WALKERS SHELTER, E OF LLYN ARRAN	SH73601386
A MASSIVE NATURAL BOULDER SUPPORTED ON A SMALLER ONE, THE SIDES HAVE BEEN ENCLOSED BY ROUGH STONE WALLING. ACCESS IS THROUGH THE W SIDE WALL.		

<u>PRN</u>	<u>SITENAME</u>	<u>NGR</u>
13666	?SHELTERS, E OF LLYN ARRAN CADAIR IDRIS	SH73571384
THREE DEPRESSIONS WITHIN AN AREA OF SCREE, THEY MAY REPRESENT SPRINGS, ALTHOUGH, THERE MAY BE VERY LOOSELY BUILT RUBBLE WALLS ENCLOSING THEM, POSSIBLY SHELTERS BUT ARE LOCATED AT THE BASE OF A SCREE SLOPE.		
13667	STANDING STONE, S OF LLYN ARRAN CADAIR IDRIS	SH73431380
A LARGE ORTHOSTAT WITH A NUMBER OF STONES, SOME POSSIBLY PACKING STONES, AROUND ITS BASE. THERE IS A STRATA OF QUARTZ RUNNING THROUGH IT. IT OVER LOOKS THE LAKE.		
13668	SHEPHERD/WALKERS SHELTER, S OF LLYN ARRAN	SH73411380
TWO LARGE BOULDERS LEANING ON ONE ANOTHER FORMING AN 'ARCH' WITH THE SIDE BUILT UP WITH STONES TO ENCLOSE THE SHELTER.		
13669	ENCLOSURE, S OF LLYN ARRAN CADAIR IDRIS	SH73391379
A SUB-RECTANGULAR ENCLOSURE DEFINED BY MASSIVE BOULDERS JOINED BY SHORT LENGTHS OF ROUGH DRY-STONE WALLS (UP TO 1M HIGH). IT IS LOCATED IN A BOULDER STRUNE AREA. THERE IS A POSSIBLE SHELTER UNDER A BOULDER IN NW OF THE ENCLOSURE. THE ENCLOSURE IS 4M BY 3M IN SIZE.		
13670	ENCLOSURE, S OF LLYN ARRAN CADAIR IDRIS	SH73391392
A STONE ENCLOSURE OF ROUGH DRY-STONE WALLS, 0.2M TO 1.2M HIGH IN PLACES BUT GENERALLY RUINED. AS DEFINED BY O.S. APART FROM A VERY RUINED STRETCH OF WALLING RUNNING OFF IN A N DIRECTION AND DISAPPEARING INTO SCREE.		
13671	SHEEPFOLD, S OF LLYN ARRAN CADAIR IDRIS	SH73391385
THREE DRY-STONE WALLING SHEEPFOLDS. THEY APPEAR TO BE LATER THAN THE ENCLOSURE SURVEY NO. 83.		
13672	SHEEPFOLD, NE OF LLYN ARRAN CADAIR	SH73991461
A SMALL DRY-STONE SHEEPFOLD, 2M BY 1M, AT THE SE END OF WALL SURVEY NO. 65.		
13673	PEAT HOUSE/SHELTER, NE OF LLYN ARRAN CADAIR IDRIS	SH73961474
A POSSIBLE PEAT HOUSE/SHELTER DEFINED BY A STONE KERB. OBSCURED BY RUSHES, MAY BE NATURAL.		
13674	PEAT CUTTINGS, E OF CHWAREL PENRHYN-GWYN	SH70931493A
AN AREA OF PEAT CUTTINGS, VERTICALLY SIDED DEPRESSIONS MOSTLY SUB-RECTANGULAR AND APPROXIMATELY 10M BY 3M IN SIZE.		
13675	CULVERT; N OF LLYN GAFR CADAIR IDRIS	SH71171490
A MADE BREAK IN THE FIELD WALL TO ALLOW A STREAM THROUGH. SIX LINTEL TYPE STONES BRIDGE THE GAP TO PREVENT ANIMALS ACCESS.		
13676	TRIAL/LEVEL N OF LLYN GAFR CADAIR IDRIS	SH71231476
ON A STEEP SLOPE A PARTIALLY BLOCKED TRIAL WITH A SPOIL TIP DOWNSLOPE, FORMING A SLIGHT TERRACE.		
13677	TRIAL/LEVEL?, N OF LLYN GAFR CADAIR IDRIS	SH71231475
FOUR METRES TO THE SW OF SURVEY NO. 89 IS ANOTHER BLOCK TRIAL/LEVEL CUT INTO A STEEP SLOPE. THERE IS A LESS OBVIOUS SPOIL TIP DOWNSLOPE.		
13678	WALL, N OF LLYN GAFR CADAIR IDRIS	SH71271474
A RUINED DRY-STONE WALL RUNNING ACROSS A STEEP GULLY FROM OUTCROP TO OUTCROP. THERE IS COLLAPSE ON BOTH SIDES, BUT SOME POSSIBLE FACING SURVIVES. IT IS APPROXIMATELY 23M LONG, 0.9M WIDE, UP TO 0.4M HIGH AND ORIENTATED SW - NE.		



PRN	SITENAME	NGR
13679	ENCLOSURE, N OF LLYN GAFR CADAIR IDRIS	SH71191474
A ROUGHLY BUILT DRY-STONE OVAL ENCLOSURE AT THE BASE OF A STEEP GULLY. THE WALLS DON'T APPEAR TO HAVE ANY REAL STRUCTURE AND A NUMBER OF LARGE NATURAL BOULDERS HAVE BEEN EXPLOITED. THE ENCLOSURE IS 5M BY 2M AND 0.8M HIGH.		
13680	PLATFORM, N OF LLYN GAFR CADAIR IDRIS	SH71171473
A PLATFORM (6M BY 6M) SITUATED ON A SLOPE JUST BEFORE THE BASE. IT MAY BE NATURAL, THERE IS NO DEFINITE SIGN OF HUMAN ACTIVITY BUT IT IS SCREE FREE.		
13681	SHEEPFOLD & ENCLOSURE, N OF LLYN Y GAFR	SH71161473
SHEEPFOLD OF POSS. 3 COMPARTMENTS, 3M X 2M; 3M X 2.2M AND 3M X 2M. WALLS ARE FACED AND STAND UP TO 1.2M HIGH. THE ENCLOSURE WALL APPEARS OLDER, MADE OF LARGE BOULDERS AND VERY RUINOUS. MAY RELATE TO AN EARLIER LONG HUT, BUT NONE CAN BE SEEN BENEATH THE SHEEPFOLD.<1>		
13682	PEAT CUTTINGS; N OF LLYN GAFR CADAIR IDRIS	SH71031463A
AN AREA OF PEATY GROUND WITH SUB-RECTANGULAR DEPRESSIONS (VERTICALLY SIDED).		
13683	HUT CIRCLE, N OF LLYN Y GAFR	SH71011453
A FRAGMENTARY CIRCLE OF STONES WITH SOME QUARTZ FRAGMENTS, 4M IN DIAMETER.<1>		
13685	ENCLOSURE; N OF LLYN GAFR CADAIR IDRIS	SH71181442
A SUB-RECTANGULAR DRY-STONE ENCLOSURE ADJACENT TO A STREAM (THE SITE OF A NATURAL WATER FALL AND POOL). THE ENTRANCE IS ON THE N SIDE AND IS MARKED BY AN ORTHOSTAT. THE S WALL IS FRAGMENTARY BUT NOT REALLY NEEDED AS THIS IS ENCLOSED BY OUTCROPPING. IT IS 11M BY 6M.		
13686	HUT CIRCLE, CADAIR IDRIS	SH71021424
INCOMPLETE CIRCLE OF STONES, 5M X 3M (EXT) WITH POSSIBLE ENTRANCE TO THE EAST. SOME OF THE STONES SEEM TO BE SITTING ON TOP OF A STONY BANK, MAY BE LATER CLEARANCE.<1>		
13687	MOUND; SE OF TYDDYN-MAWR CADAIR IDRIS	SH70631530
A VERY SLIGHT MOUND NEAR A STREAM. TOO SMALL FOR A BURNT MOUND AND NOT VERY WELL DEFINED. 1.2M IN DIAMETER AND 0.3M HIGH.		
13688	PLATFORM; SE OF TYDDYN-MAWR CADAIR IDRIS	SH70611530
A SMALL PLATFORM, POSSIBLY NATURAL, WITH A CONCAVE DEPRESSION IN THE CENTRE. IT IS 5M IN DIAMETER AND 1M HIGH AND IS SITUATED ADJACENT TO A STREAM AND THERE IS A SIMILAR SITE NEARBY.		
13689	PLATFORM; SE OF TYDDYN-MAWR CADAIR IDRIS	SH70611529
SIMILAR TO SURVEY NO. 104 ONLY SMALLER WITH A SLIGHT DIP IN THE TOP. IT IS 4M IN DIAMETER AND 0.8M HIGH. A PLASTIC SILAGE BAG IS SITUATED IN THE SLIGHT DEPRESSION.		
13690	PLATFORM; E OF TYDDYN-MAWR CADAIR MAWR	SH70571544
THE SITE OF A PROBABLE FORMER TERRACED PLATFORM NOW ALMOST COMPLETELY BURIED BY STONE, MUCH OF IT IS LARGE BLOCKS FROM THE DEMOLISHED BUILDING. SMALLER STONES ARE VISIBLE BELOW IT. IT IS 12M BY 8M AND ORIENTATED E - W.		
13691	CLEARANCE CAIRN; E OF TYDDYN-MAWR CADAIR IDRIS	SH70541546
A SMALL CLEARANCE CAIRN, 2.5M IN DIAMETER AND 0.5M HIGH, AT THE EDGE OF A TERRACE/BASE OF NATURAL SLOPE AND N OF SURVEU NO. 106.		
13692	CLEARANCE CAIRN; E OF TYDDYN-MAWR CADAIR IDRIS	SH70531546
AN AREA OF CLEARANCE CAIRNS ON THE EDGE OF TERRACE OR BASE OF SLOPE. N OF SURVEY NO. 106.		
13693	TRACK; NE OF TYDDYN-MAWR CADAIR IDRIS	SH70491551
A SHORT LENGTH OF TRACKWAY LEADING UP A HILLSLOPE BETWEEN TWO OUTCROPS. IT IS PARTIALLY REVETTED TO THE N. IT IS 25M LONG, 3M WIDE AND ORIENTATED SW - NE.		

<u>PRN</u>	<u>SITENAME</u>	<u>NGR</u>
13694	WALL; CHWAREL PENRHYN-GWYN CADAIR IDRIS	SH70401497C
A SHORT LENGTH OF DRY-STONE WALL, FAIRLY WELL CONSTRUCTED AND TRUNCATED BY QUARRY HOLE AND TIP. IT IS 1M WIDE, 1.8M HIGH AND ORIENTATED NW - SE.		
13695	WALL; CHWAREL PENRHYN-GWYN CADAIR IDRIS	SH70491487C
A CONTINUATION OF SURVEY NO. 113. TRUNCATED BY QUARRY ACTIVITY.		
13696	WALL; E OF CHWAREL PENRHYN-GWYN CADAIR IDRIS	SH70551485C
A SHORT STRETCH OF POORLY CONSTRUCTED DRY-STONE WALLING. APPEARS TO BE OLDER THAN SURVEY NO.'S 112 - 114. IT IS 0.5M WIDE AND 0.8M HIGH.		
13697	PLATFORM, CADAIR IDRIS	SH70481478
PROB. NATURAL PLATFORM ON N-FACING SLOPE, NO OBVIOUS MAN-MADE FEATURES. TURF MOUND ON W.SIDE. TOP PART OF SHELF, NO REVETTING.<1>		
13698	POSS. LONG HUT, CADAIR IDRIS	SH70321469
POSSIBLE FORMER LONG HUT, LARGELY DERELICT AND MORE RECENTLY TURNED INTO A SHEEP SHELTER. MEASURES 7M X 4M WITH A POSSIBLE INTERNAL DIVISION MIDWAY.<1>		
13699	TRIAL, CADAIR IDRIS	SH70231463
SLATE TRIAL LEADING DIRECTLY INTO HILL-SIDE, INTERNALLY 9 X 1.8M OVERALL WITH TIP C.15M X 4M SPOIL DOWNHILL.<1>		
13700	CLEARANCE CAIRN, CADAIR IDRIS	SH70311457
(CLEARANCE) CAIRN C.1.5M IN DIAMETER ON TOP OF NATURAL KNOLL, NO CLEARANCE IN VICINITY. REASONABLY WELL-CONSTRUCTED, C.6M HIGH.<1>		
13702	SHEEP-CREEPS, CADAIR IDRIS	SH70641468C
A NUMBER OF BLOCKED SHEEP CREEPS, CONTAINED WITHIN NO.120, TUMBLED IN E SECTION AND REPLACED WITH WIRE FENCE.<1>		
13703	SHEEP-CREEP, CADAIR IDRIS	SH69871456C
SHEEP CREEP, SIMILAR IN CONSTRUCTION TO NO.121.<1>		
13704	ENCLOSURE, CADAIR IDRIS	SH69871460
BUILT OUT OF WALL NO.126, SMALL ENCLOSURE OF RECENT ORIGIN, OVAL IN SHAPE MEASURING 1M X 1.4M AND 2-3 COURSES HIGH.<1>		
13706	SHEEPFOLD, S. CHWAREL PENRHYN	SH70251450
WELL-BUILT RECTANGULAR SHEEPFOLD BUILT AGAINST UPPER EDGE OF FFRIDD WALL. NOW SUBDIVIDED INTO 1 LONG AND 1 SHORT PEN, WITH GATE INTO FIELD AT WEST END. 16M X 7M, NOW PARTIALLY COLLAPSED.<1>		
13707	ORTHOSTAT, CADAIR IDRIS	SH70851432
SINGLE UPRIGHT STONE NOW LEANING TO NE. SITUATED ON N ROCKY SLOPE, ABOVE LEVEL PLATFORM OF PEAT. C1..6M HIGH, TAPERING TO THE TOP.<1>		
13708	HUT CIRCLE, CADAIR IDRIS	SH70281421
SMALL POORLY DEFINED HUT CIRCLE, PARTLY TERRACED INTO EAST FACING SLOPE. DIAMETER = C.3M INTERNALLY, MUCH COLLAPSED AND ORIGINAL SIZE AND SHAPE DIFFICULT TO DETERMINED. ORTHOSTAT ON EAST SIDE MAY MARK ENTRANCE.<1>		
13709	CAIRN, W OF LLYN Y GAFR	SH70871418
SMALL CAIRN, C.2.5M IN DIAMETER AND 1.2M HIGH. NO OBVIOUS CONSTRUCTION, JUST PILED STONE. NO OTHER CLEARANCE IN VICINITY.<1>		

PRN	SITENAME	NGR
13710	CAIRN, CADAIR IDRIS	SH70891417
SMALL CAIRN ON EDGE OF FOOTPATH. NO CONSTRUCTION, UNDOUBTEDLY A WALKERS CAIRN.<1>		
13711	SHEEPFOLD/ENCLOSURE, W OF LLYN Y GAFR	SH70841419
SUB-RECTANGULAR, STONE BUILT ENCLOSURE, BUILT UP AGAINST AN OUTCROP ON A NATURAL SHELF. C.8M LONG, 5M WIDE WITH WALLS UP TO 1M HIGH. ENTRANCE IN THE S SIDE.<1>		
13712	RECTANGULAR FOUNDATIONS, CADAIR IDRIS	SH70831425
FOUNDATIONS OF RECTANGULAR STRUCTURE, 1 COURSE HIGH, 3M X 2M. ANOTHER POSS. ARTIFICIAL PLATFORM EXISTS C.30M NE.<1>		
13713	BUILDING & ENCLOSURE, CADAIR IDRIS	SH70661413A
MASSIVELY BUILT BUT NOW TUMBLED SQUARE BUILDING WITH ADJACENT PEN TO THE N AND A SHORT LENGTH OF WALL TO THE S. ENTRANCE ORIGINALLY ON THE S SIDE. THE BUILDING MEASURES 6M X 5M WITH WALLS 1.2 - 2M HIGH.<1>		
13714	SHEEPFOLD, CADAIR IDRIS	SH70961457
FAIRLY COMPLEX SHEEPFOLD ON EAST BANK OF STREAM. MAIN RECTANGULAR PEN: 9M X 4M WITH ENTRANCE TO THE N, MAINLY SUNKEN. ADDITIONAL SQUARE PEN IN NW CORNER. SMALL ANNEXE TO THE NORTH.<1>		
13715	FIELD CLEARANCE, W BWLCH COCH	SH74251595
AMORPHOUS CLEARANCE HEAP C.10M X 6M, E OF FIELD GATE. STILL IN USE.<1>		
13716	CLEARANCE HEAP, TY'N Y BRYN	SH74231605
AMORPHOUS HEAP OF CLEARANCE MATERIAL ON E SIE OF WALL.<1>		
13717	FORMER PUBLIC HOUSE, TY'N Y FFORDD FAWR	SH74391583
UNROOFED BUILDING, GABLE STILL STANDS TO N END. THE S END HAS BEEN DEMOLISHED AND REPLACED BY A TRACTOR SHED. LOCAL INFO - USED TO BE A PUB.<1>		
13718	TRACKWAY, TY'N Y FFRIDD	SH74391579C
TRACKWAY FROM TY'N Y FFRIDD UP AND AROUND TO MAES-COCH. STONE WALLED ON BOTH SIDES.<1>		
13719	CLEARANCE CAIRNS, TY'N Y FFORDD FAWR	SH74491575A
SERIES OF CLEARANCE CAIRNS ON NATURAL OUTCROPS IN STEEPLY SLOPING FIELD. SOME ARE BUILT UP AS PLATFORMS, SOME JUST DUMPED.<1>		
13720	TRACKWAY, BWLCH COCH	SH74501583C
TRACKWAY WHICH LEADS FROM TY'N Y FFORDD FAWR OVER THE TOP.<1>		
13721	ENCLOSURE, S OF MAES COCH	SH74461563C
CURIOUS ENCLOSURE MARKED ON OS MAP. C 0.4M HIGH WITH OVERALL DIMENSIONS OF 25M X 25M.<1>		
13722	BOULDER WALL, SE OF MAES COCH	SH74691569C
SECTION OF DOUBLE SIDED BOULDER WALL RUNNING FOR C.20M DIAGONALLY ACROSS THE SLOPE. ITS E END MAY HAVE BEEN TRUNCATED BY A WATER COURSE. NUMEROUS GRASSED OVER HOLLOWES LEADING DOWN THE SLOPE.<1>		
13723	SHEEPFOLD, CADAIR IDRIS	SH74591559
SMALL SUB-RECTANGULAR STONE BUILT ENCLOSURE, PROBABLY FORMERELY ACTING AS A SHEEPFOLD. ORIENTATED NE-SW ON A SMALL NATURAL SHELF, IT MEASURES 7M X 4M, WITH WALLS STANDING TO 0.8M HIGH. ENTRANCE IN SE END. NE END CONTAINS A 1M WIDE PARTIALLY ROOFED AREA IN FRONT.<1>		



<u>PRN</u>	<u>SITENAME</u>	<u>NGR</u>
13724	SHEEPFOLD, CADAIR IDRIS	SH74551554
SHEEPFOLD ON NATURAL SHELF ON NW FACING HILLSLOPE. SQUARISH IN SHAPE (3M X 3M) WALLS ALMOST 2M HIGH, WITH GUIDE WALL OUTSIDE ENTRANCE ON NE. POSS. ANNEXE BUILT INTO SLOPE TO S NOW COLLAPSED AND WITH NO OBVIOUS ACCESS.<1>		
13725	CLEARANCE HEAPS, MAES COCH	SH74331570C
NO. OF FIELD CLEARANCE DUMPS IN PASTURE FIELD.<1>		
13726	TRACKWAY, S OF MAES COCH	SH74331563C
BROAD GRASSED OVER TRACKWAY DEFINED BY TWO LOW DRY-STONE WALLS. PETERS OUT TO THE SOUTH.<1>		
13727	WALL, S OF MAES COCH	SH74341561
WALL 'BLOCKING' TOP OF TRACK, FORMERLY CONTINUED ACROSS FIELD TO THE EAST TO THE EDGE OF A STREAM.<1>		
13728	WALL, CADAIR IDRIS	SH74151543
A SHORT STRETCH OF WALL RUNNING MORE OR LESS ACROSS THE CONTOUR. 1 COURSE HIGH, DOUBLE SIDED IN PLACES, TAKING ADVANTAGE OF NATURAL BOULDERS.<1>		
13729	CLEARANCE CAIRN, CADAIR IDRIS	SH74401537
VERY SMALL, PROBABLY MODERN CLEARANCE CAIRN WITH REMARKABLY FEW STONES IN IT.<1>		
13730	WALL, CADAIR IDRIS	SH7441533C
POORLY PRESERVED BUT DISTINCT STRETCH OF WALL. SEVERELY ROBBED AND ONLY VISIBLE IN DISCONTINUOUS STRETCHES. RUNS ALMOST STRAIGHT UPHILL.<1>		
13731	TRACKWAY, CADAIR IDRIS	SH73851479C
STRETCH OF TRACKWAY CUT INTO N-FACING SLOPE. N SIDE REVETTED BY STONES UP TO 0.4M HIGH.<1>		
13732	SHEEPFOLD, CADAIR IDRIS	SH73781483
IRREGULAR SHAPED SHEEPFOLD ON N BANK OF LARGE STREAM. S. END COMPRISES NATURAL BOULDER. STONE WALL UP TO 1.6M HIGH CURVES AROUND TO NE AND DROPS DOWN TO STREAM. 30M X 15M INTERIOR (APPROX).<1>		
13733	PEAT CUTTING, CADAIR IDRIS	SH73721476
AREA OF PEAT CUTTING ON SLIGHT RIDGE BETWEEN TWO STREAMS. IRREGULAR IN SIZE AND SHAPE BUT WITH DEFFINITE EDGES UP TO 30M ACROSS. CUT EGDE ONLY C.0.2M DEEP.<1>		
13734	SHEEPSHELTER, CADAIR IDRIS	SH73681467
V RUINOUS SHEEPFOLD ON LEVELISH GROUND. WEST SIDE CONSTRUCTED OF NATURAL BOULDERS 1.6M HIGH WITH 2 QUITE SUBSTANTIAL WALLS LEADING OFF PERPENDICULARLY FROM EACH END. POSS. SUB-CIRCULAR ENCLOSURE TO N, C.11M ACROSS AND POORLY DEFINED.<1>		
13735	LONG HUT, CADAIR IDRIS	SH73631462
LONG HUT SITUATED ON LOW LEVEL GROUND, 8M X 5M, ENTRANCE ON S SIDE, INNER FACING VISIBLE IN PLACES. TERRACED INTO SLOPE TO THE N. 2 ENCLOSURES TO THE SW, BOTH RUINOUS, 2M IN DIAMETER WITH ENTRANCE.<1>		
13736	NATURAL FEATURE, CADAIR IDRIS	SH73361455
CIRCULAR STONE FEATURE IDENTIFIED FROM AP. WHEN CHECKED ON THE GROUND, ONLY POSS. FEATURE WAS A HIGH, STEEP CONICAL MOUND UP TO 3M HIGH OM EDGE OF ROCK OUTCROP.<1>		
13737	PEAT CUTTING, CADAIR IDRIS	SH73641458
AREA OF PEAT CUTTING, EDGES NOT DEFINED. AT LEAST ONE PEAT STACK, AMORPHOUS SHAPE, C0.3M HIGH.<1>		

PRN	SITENAME	NGR
13738	MOUND, CADAIR IDRIS	SH73311432
MOUND, 6M IN DIAMETER AND 1.6M HIGH SITUATED IN A FLAT AREA OF PEAT BOG. TURF COVERED WITH 4-5 STONES VISIBLE IN WEST QUADRANT WHICH APPEAR TO BE BEDROCK. PROBABLY NATURAL.<1>		
13739	SHEEPFOLD, LLYN ARRAN	SH73531388
PROBABLE SHEEPFOLD, 5M X 6M, WITH WALLS STANDING TO A HEIGHT OF 1.6M. ENTRANCE IN THE MIDDLE OF THE NORTH WALL, NOW COLLAPSED.<1>		
13740	ENCLOSURE, LLYN ARRAN	SH73471393
MASS OF STONE INCLUDING SMALL CRUDELY BUILT ENCLOSURE, ALIGNED NW-SE AND MEASURING 2M X 1M. APPEARS TO OVERLY AN EARLIER STRUCTURE C.8M X 6M, DETAIL OBSCURED BY COLLAPSE.<1>		
13741	FEATURE, LLYN ARRAN	SH73481398
LARGE LINEAR PILE OF SMALL STONES ON E SIDE OF STREAM AS IT LEAVES THE LAKE.<1>		
13742	CAIRN, CADAIR IDRIS	SH73751454
3 ROWS OF STONES LOOSELY PILED UP ALL C.30M APART ON E SIDE OF STREAM. NO SIGNS OF CLEARANCE IN THE VICINITY.<1>		
13743	PEAT CUTTING, CADAIR IDRIS	SH70701509
AREA OF PEAT CUTTING ON NATURAL SHELF NEAR STREAM. SITE DEFINED BY TYPICAL STRAIGHT EDGES.<1>		
13744	ENCLOSURE, CADAIR IDRIS	SH70551513
SMALL BUT SUBSTANTIAL SUB-CIRCULAR ENCLOSURE APPARENTLY BUILT ON TO OUTSIDE OF WALL NO.189. 2.5M IN DIAMETER, WALLS REMAIN TO A HEIGHT OF 0.8M. PROBABLE SHEEP PEN.<1>		
13745	TRACKWAY, CADAIR IDRIS	SH70551508
POSS. TRACKWAY, C.2M WIDE, TERRACED INTO THE END OF THE RIDGE. APPEARS MORE LIKE A DRIED STREAM BED AT ITS SOUTHERN END.<1>		
13746	PEAT CUTTING, CADAIR IDRIS	SH70451516A
RECTANGULAR AREA OF PEAT CUTTING AGAINST BASE OF SMALL CLIFF.<1>		
13747	TRACKWAY, E OF PENRHYN GWYN	SH70391510
TRACKWAY LEADING AROUND CONTOUR DOWN N SIDE OF STEEP ROCKY HILLSIDE, MOSTLY REVETTED UP ON N SIDE, OVER 1M IN PLACES. TRACKWAY ITSELF IS UP TO 2M WIDE.<1>		
13748	HOUSE & ENCLOSURE, CADAIR IDRIS	SH70461512
WELL-BUILT HOUSE AND ATTACHED ENCLOSURE. THE HOUSE IS SOLID WITH 2 GABLE ENDS. NO SIGN OF FIREPLACE OR INTERNAL. THE ENCLOSURE ABUTTS THE HOUSE AND IS MORE ROUGHLY BUILT.<1>		
13749	FIELD WALL, E OF PENRHYN GWYN	SH70501510C
SINGLE COURSE STONE WALL LEADING AWAY FROM BUILDING 195, 0.6M WIDE AND 0.4M HIGH.<1>		
13750	PEAT CUTTING, CADAIR IDRIS	SH70541505C
AREA OF PEAT CUTTING.<1>		
13751	PLATFORM; N OF LLYN GAFR CADAIR IDRIS	SH71001428
A SLIGHT PLATFORM, 6.5M BY 4M, CUT INTO A GENTLE SLOPE. MAY BE NATURAL. IT IS 10M NE OF PRN 4763.		
13752	?CAIRN; N OF LLYN GAFR CADAIR IDRIS	SH71051432
A SUB-CIRCULAR, OVERGROWN STONY MOUND APPROXIMATELY 3M IN DIAMETER AND 0.6M HIGH. IT MAY BE SOME KIND OF CAIRN.		

PRN	SITENAME	NGR
13753	POSS. CAIRN, CADAIR IDRIS	SH71101427
SLIGHTLY OVAL CAIRN, OVERGROWN. SOME STONES VISIBLE.<1>		
13754	WALL, CADAIR IDRIS	SH71381486
RUINED WALL, PREHISTORIC IN APPEARANCE, RUNNING WEST ALONG THE LINE OF THE C19TH FILED WALL. CONSTRUCTED OF SINGLE LARGE STONES AT THE E END, DOUBLE STONES AS IT MOVES WEST. ONE COURSE HIGH (0.4M MAX.)<1>		
13755	SHEEPFOLD, CADAIR IDRIS	SH71251485
VERY DENUDED SHEEPFOLD, WALLS SURVIVING TO ONLY ONE COURSE HIGH. DIMENSIONS: 6M X 4M.<1>		
13756	SLUICE, LLYN Y GAFR	SH70961422
A LOW STONE BANK RUNNING ACROSS THE MOUTH OF THE LAKE. IN PLACES WOODEN STAKES SURVIVE.<1>		
13757	SHEEPFOLD, CADAIR IDRIS	SH72431558
A 3 COMPARTMENT SHEEPFOLD AGAINST A FIELD WALL.<1>		
13758	SHEEPFOLD, CADAIR IDRIS	SH72961563
A TWO COMPARTMENT SHEEPFOLD.<1>		
13759	WALL, CADAIR IDRIS	SH72831532
A POSSIBLE STONE WALL, LOW WITH OUTER FACING.<1>		
13760	POSS. HUT CIRCLE, CADAIR IDRIS	SH72841528
A CIRCULAR STONE BUILT FEATURE WITH AN ASSOCIATED STONE WALL RUNNING DOWN GULLY. THE WHOLE SITE IS PARTIALLY COVERED WITH HEATHER. DIAMETER = 5M, BANKS = 1M WIDE AND 0.6M HIGH.<1>		
13761	STONE HEAP, CADAIR IDRIS	SH72931493
A RECENT PILE OF STONES AROUND A NOW FALLEN IRON POST WITH STANTIONS & IRON RINGS SET IN NEARBY ROCKS.<1>		
13762	SHELTER, CADAIR IDRIS	SH72511509
A SMALL SHELTER OR SHEEPFOLD, 3M X 2M INTERNALLY AND 1.5M IN HEIGHT.<1>		
13763	WALL, CADAIR IDRIS	SH72511509
A SHORT STRETCH OF WALLING RUNNING ACROSS A GULLY ABOVE A HIDDEN STREAM.<1>		
13764	STANDING STONE, E OF LLYN Y GAFR	SH71371421
A LARGE, SLIGHTLY POINTED STONE. 2M X 1M AT BASE AND LEANING SLIGHTLY TO THE SE. STONES PARTIALLY OVERGROWN AROUND THE BASE.<1>		
13765	WALL, LLYN Y GAFR	SH71251403C
A RUBBLE STONE WALL, WITH POSS. ROUGH FACING PRESENT IN PLACES.<1>		
13766	HUT CIRCLE, CADAIR IDRIS	SH71131399
POSSIBLE HUT CIRCLE DEFINED BY STONY BANK 0.5M HIGH AND 1.1M WIDE; 5M IN DIAMETER.<1>		
13767	WALL, CADAIR IDRIS	SH71051406
A SHORT LENGTH OF VERY ROUGH, CRESCENT SHAPED WALLING, UTILISING A NATURAL BOULDER. IT IS SITUATED ON A SLIGHT FLAT AREA ADJACENT TO THE LAKE.<1>		
13768	SUB-RECTANGULAR FEATURE, CADAIR IDRIS	SH71291401
A SUB-RECTANGULAR STONE DEFINED FEATURE, 11M X 6M IN A FLAT BOTTOMED VALLEY. MAY BE NATURAL.<1>		



<u>PRN</u>	<u>SITENAME</u>	<u>NGR</u>
13769	SHELTER & ENCLOSURE, CERRIG NIMBWL	SH71801395
A MODERN SHELTER BUILT INTO THE MASSIVE BOULDERS OF CERRIG NIMBWL. HAS A WOODEN SUPPORT FRAME & A CORRUGATED IRON ROOF WITH TURF ON TOP. LOW DRY-STONE ENCLOSURE TO THE NW AND ANOTHER TO THE SOUTH OF THE SHELTER.<1>		
13770	WALL, CARREG NIMBWL	SH71821396C
FACED WALL, POSSIBLY A SHEEP LEA.<1>		
13771	SHEEPFOLD, CADAIR IDRIS	SH72581444
A 2 COMPARTMENT SHEEPFOLD, WITH WALLS SURVIVING TO 1.2M IN HEIGHT.<1>		
13772	SHETER, CADAIR IDRIS	SH76211571
A SUB-CIRCULAR STONE SHELTER WITH STONES PLACED AROUND A NATURAL BOULDER. WALLS 0.8M WIDE, 0.2M HIGH.<1>		
13773	WALL, CADAIR IDRIS	SH73021556
A CRESCENT SHAPED DRY-STONE WALL THE FOOT OF AN ERODING OUTCROP. WALL SURVIVES TO 1M HIGH IN PLACES.<1>		
13774	ENCLOSURE, CADAIR IDRIS	SH73301477
POSS. SUB-CIRCULAR ENCLOSURE AT THE FOOT OF AN OUTCROP, 3M X 2M. MAY BE NATURAL.<1>		
13775	HAFOD/SHEEPFOLD, CADAIR IDRIS	SH73331490
A LONG THIN STRUCTURE WITH DRY-STONE WALLS. IT IS NOT BUILT ON A PLATFORM AND THE GROUNDS IS NOT LEVEL. MEASURES 12M X 3M, WITH FACED WALLS WHICH VARY IN HEIGHT BETWEEN 0.3 AND 0.5M. THE LOWER WALLS HAVE BEEN ROBBED FOR A SHEEPFOLD WHICH MAY BE SITTING WITHIN THE VERY DENUDED REMAINS OF AN ENCLOSURE.<1>		
13776	SHEEPFOLD, CADAIR IDRIS	SH73401490
A SQUARE DRY-STONE SHEEPFOLD WITH ONE ENTRANCE ON THE W SIDE. WALLS STAND TP 0.5M HIGH AND RARE ROUGHLY FACED.<1>		
13777	LEVEL, CADAIR IDRIS	SH73391505
A LEVEL EXCAVATED INTO THE SLOPE, ENTRANCE C.1.5M X 1.5M, WITH A LARGE SPOIL TIP IN FRONT.<1>		
13778	POSS.SHELTER, CADAIR IDRIS	SH73271518
A SMALL ROUGH DRY-STONE STRUCTURE, POSSIBLY A SHELTER OR SHEEPFOLD.<1>		
13779	SHELTER, CADAIR IDRIS	SH73651502
ENCLOSURE CONSTRUCTED OF VERY ROUGH DRY-STONE WALLS, WITH SOME FACING VISIBLE. MEASURES 2.7M X 2.7M. WALLS NO HIGHER THAN 0.5M.<1>		
13780	SHEEPFOLD, CADAIR IDRIS	SH73651505
A SUB-RECTANGULAR DRY STONE SHEEPFOLD WITH ATTACHED ENCLOSURE. SHEEPFOLD MEASURES 4M X 4M, ENCLOSURE: 5M X 1M.<1>		
13781	SHEEPFOLD, CADAIR IDRIS	SH73641507
A WELL BUILT MODERN DRY STONE SHEEPFOLD. L-SHAPED 7.7M BY 7M IN SIZE WITH WALLS STANDING TO 2M IN HEIGHT.<1>		
13782	TRIAL LEVEL, CADAIR IDRIS	SH73711505
LEVEL, 5M X 2M AND C.3M DEEP WITH SPOIL TIP IN FRONT.<1>		
13783	BARN, CADAIR IDRIS	SH73151598
A WELL BUILT COW HOUSE/HAY LOFT. GABLE ENDS SURVIVE. IT HAS A PAVED INTERNAL FLOOR & PAVED YARD AND A MODERN CENTRAL DIVIDING WALL.<1>		

PRN	SITENAME	NGR
13784	SHEEPFOLD, CADAIR IDRIS	SH73341597
A SMALL DRY-STONE RECTANGULAR STRUCTURE. PROBABLY A SHEEPFOLD ALTHOUGH IT MAY BE RELATED TO THE NEARBY QUARRY. ENTRANCE IN THE E END.<1>		
13785	QUARRIES, CADAIR IDRIS	SH73371594
2 SMALL QUARRIES WITH ASSOCIATED SPOIL TIPS WHICH HAVE BEEN NEATLY REVETTED DOWNSLOPE. A REVETTED TRACK RUNS NW-SE UP TO THE QUARRY.<1>		
13786	WALL, CADAIR IDRIS	SH73371590
A DRY-STONE WALL, ROUGHLY FACED AND BUILT OF LARGISH STONES.<1>		
13787	TRACKWAY, CADAIR IDRIS	SH73601593
A ROUGH TRACKWAY THROUGH WOODS DIAGONALLY UPSLOPE.<1>		
13788	BANK AND DITCH, CADAIR IDRIS	SH73501592
A VERY LOW STONY BANK 0.5M WIDE WITH A SHEEPTRACK OR SLIGHT DRAINAGE DITCH UPSLOPE. THE BANK IS GRASSED OVER.<1>		
13789	WALL, CADAIR IDRIS	SH73231580
A SHORT STRETCH OF CONCRETED STONE WALLING WITH AN IRON POLE STICKING OUT ACROSS THE STREAM. POSS. A DAM.<1>		
13790	WALL AND PLATFORM, CADAIR IDRIS	SH73231581
DRY-STONE WALLING LOCATED 2M UPSTREAM OF 248 ON OPPOSITE SIDE OF STREAM. ALSO A PLATFORM 1.2M X 2M.<1>		
13791	DRAINAGE CHANNEL/TRACKWAY, CADAIR IDRIS	SH73101583C
A GRASS COVERED BANK UP TO 0.5M HIGH WITH A SLIGHT DITCH UPSLOPE. BANK 1M WIDE IN PLACES. DITCH UP TO 1M WIDE.<1>		
13792	WALL, CADAIR IDRIS	SH70671555C
THE REMAINS OF A POSSIBLE DRY STONE WALL.<1>		
13793	SUB-RECTANGULAR STRUCTURE, CADAIR IDRIS	SH70601577
AN ARTIFICIAL LOOKING STONY SUB-RECTANGULAR STRUCTURE. POSSIBLE A PLATFORM, LOCATED AT THE FOOT OF SCREE. POSSIBLY A SHEPHERDS SHELTER.<1>		
13794	WALL, CADAIR IDRIS	SH70571574
A SHORT STRETCH OF ROUGH DRY-STONE WALL. NO OBVIOUS FACING. ANOTHER POSSIBLE STRETCH ABOVE MAY BE A CONTINUATION.<1>		
13795	REVETMENT, CADAIR IDRIS	SH70581576
POSSIBLE STONE REVETTING. VERY ROUGH, LOCATED AT THE BASE OF AND ERODING OUTCROP. MAY BE NATURAL.<1>		
13796	SHELTER, CADAIR IDRIS	SH70471566
LOOSE RUBBLE WALLS, 0.5M HIGH, EXCAVATED OUT OF SCREE. COULD BE NATURAL.<1>		
13797	SHEEPFOLD, E OF TYDDYN MAWR	SH70881553
A WELL BUILT DRY-STONE SHEEPFOLD. WALLS STAND TO 1M HIGH. CIRCULAR COMPARTMENT, 5M IN DIAMETER, SQYARISH ANNEXE 1M X 1.5M.<1>		
13798	POSS. HAFOD, CADAIR IDRIS	SH70931555
POSS. HAFOD, 5M X ?, DRY STONE WALLS SURVIVING UP TO 0.4M IN HEIGHT. PARTIALLY GRASSED OVER, SOME FACINGS VISIBLE. POSSIBLE ENTRANCE TO THE NW.<1>		

<u>PRN</u>	<u>SITENAME</u>	<u>NGR</u>
13799	POSS. LONG HUT, CADAIR IDRIS	SH70901554
POSS. LONG HUT, 5M X 2.5M, ALMOST COMPLETELY GRASSED OVER. COULD BE NATURAL.<1>		
13800	POSS. PEAT STACK, CADAIR IDRIS	SH70871556
A SUB-RECTANGULAR FEATURE CONSISTING OF STONY BANKS WITH A CENTRAL HOLE. ALMOST COMPLETELY GRASSED OVER AND SITUATED IN A PEATY AREA.<1>		
13801	WALL, CADAIR IDRIS	SH71121545C
A VERY ROUGH DRY-STONE WALL, CURVING AROUND THE BASE OF AN OUTCROP.<1>		
13802	WALL, CADAIR IDRIS	SH71301537C
A SHORT STRETCH OF DRY-STONE WALLING ACROSS A SMALL GULLY. A SHEEPCREEP AT THE S END. POSS. EARLY LAND DIVISION		
13803	WALL, CADAIR IDRIS	SH71351567
A SHORT, CURVING DRY-STONE WALL, VERY ROUGHLY BUILT. ACTS AS REVETMENT TO OUTCROP.<1>		
13804	WALL, CADAIR IDRIS	SH71271563
A SHORT DRY STONE WALL WITH A SHEEP CREEP. RUNS ACROSS A SMALL GULLY.<1>		
13805	SHEEPFOLDS, CADAIR IDRIS	SH71191565
2 SUB-CIRCULAR SHEEPFOLDS. WALLS SURVIVE UP TO 1M IN HEIGHT, BUT MOSTLY 0.4M. ROUGH DRY-STONE CONSTRUCTION.<1>		
13806	WALL, CADAIR IDRIS	SH71151580C
A ROUGH STONE WALL WITH NO APPARENT FACING.<1>		
13807	REVETMENT, CADAIR IDRIS	SH71131578C
2 SHORT LENGTH OF POSSIBLE REVETMENT.<1>		
13808	TRACKWAY, CADAIR IDRIS	SH71131583C
A TRACK, CUT QUITE DEEP, UP TO 1M IN PLACES.<1>		
13809	STONE PILE, CADAIR IDRIS	SH71751585
A SUB-RECTANGULAR PILE OF STONES, 4M EAST OF STREAM. PURPOSE UNCLEAR.<1>		
13810	WALL, CADAIR IDRIS	SH71671580C
A RUINED STONE WALL APPEARS TO BE A CONTINUATION OF WALL 376.<1>		
13811	WALL, CADAIR IDRIS	SH71661586
A ROUGH DRY-STONE WALL ADJACENT TO AND PARALLEL WITH THE STREAM. EXPLOITS LARGE BOULDERS IN PLACES.<1>		
13812	HUT CIRCLE, CADAIR IDRIS	SH76371592
A FRAGMENTARY CIRCLE OF STONES, MAY BE NATURAL.<1>		
13813	SHEEPFOLD, CADAIR IDRIS	SH71831436
ENCLOSURE OR SHEEPFOLD BUILT OVER THE REMAINS OF AN OLDER SUB-RECTANGULAR STONE STRUCTURE, 9M X 3.5M. MORE RECENT STRUCTURE MEASURES 10M X 7M AND IS PROBABLY USED FOR DIPPING SHEEP.<1>		
13814	ENCLOSURE, NE LLYN Y GAFR	SH71651440
ROUGH DRY-STONE ENCLOSURE, 4M X 8M, UTILISING NATURAL OUTCROP.<1>		
13815	WALL, E OF LLYN Y GAFR	SH71871437C
A POSSIBLE STRETCH OF STONE WALLING. MAY BE NATURAL.<1>		

<u>PRN</u>	<u>SITENAME</u>	<u>NGR</u>
13816	WALL, CADAIR IDRIS	SH72021432C
A SHORT STRETCH OF DRY STONE WALLING WOTH POSS. FACING.<1>		
13817	SHELTER, CADAIR IDRIS	SH72101457
A SMALL SQUARISH STONE STRUCTURE, DRY STONE BUILT AT THE FOOT OF AN OUTCROP. NOW COLLAPSED INWARDS. A STONE ENCLOSURE/REVTMENT MAY BE PRESENT DOWNSLOPE.<1>		
13818	SHEEPFOLD, CADAIR IDRIS	SH71401530
MUCH RUINED, DRY-STONE BUILT ENCLOSURE, SITED ON SLIGHT TERRACE. MEASURES 5M X 4.5M WITH WALLS UP TO 2M IN HEIGHT. INTERNAL CURVING FACE CAN BE SEEN AT THE W END, UP TO 3 COURSES HIGH.<1>		
13819	?ENCLOSURE, CADAIR IDRIS	SH71461536C
POSS. ENCLOSURE OR WANDERING WALLS ASSOCIATED WITH NO.300.<1>		
13820	SHEEPFOLD, CADAIR IDRIS	SH71321535
SHEEPFOLD INCORPORATED INTO WALL ON SOUTH SIDE. APPROX. 9M X 6M WITH WALLS C1.7M IN HEIGHT. SUB-RECTAMGULAR IN SHAPE WITH SOME COLLAPSE ON W. AND S. SIDES.<1>		
13821	SHEEPFOLD, CADAIR IDRIS	SH71311533
SHEEPFOLD INCORPORATED INTO BOUNDARY WALL ON E SIDE AND IN THE LEE OF AN OUTCROP WHICH FORMS MUCH OF ITS EAST WALL. 11M X 3.7M WITH WALLS 2M HIGH.<1>		
13822	POSS. SHEEPFOLD,	SH71671541
POSS. SHEEPFOLD, ORIGINALLY SUB-RECTANGULAR. 4.5M X 3.2M WITH A WALL HEIGHT OF 0.2M.<1>		
13823	SHEEPFOLD, CADAIR IDRIS	SH71661547
REMAINS OF A SUBSTANTIAL BI-PERTITE SHEEPFOLD, SOME 9M X 7M. THE WEST SIDE IS INCORPORATED INTO OUTCROPPING AND MASSIVE SCREE. WALLS SURVIVE TO A MAXIMUM HEIGHT OF 1M.<1>		
13824	WALL, SE OF PENRHYN GWYN	SH70501494C
STONE WALL CLIMBING HILLSIDE, 2-3 COURSES HIGH, COARSELY BUILT OF SMALLISH BOULDERS NOW VERY OVERGROWN WITH BRACKEN. WALLS 0.6M WIDE AND 0.5M HIGH.<1>		
13825	PEAT CUTTING, CADAIR IDRIS	SH70831476
SMALL AREA OF PEAT CUTTING ON A SMALL NATURAL SHELF.<1>		
13826	PEAT CUTTING, CADAIR IDRIS	SH70991539A
AREA OF POSS. PEAT CUTTING JUST BELOW WALL ON A COUPLE OF SMALL FLAT LEDGES.<1>		
13827	ENCLOSURE, CADAIR IDRIS	SH71081528
ENCLOSURE CONSISTING OF 2 DRY-STONE WALLS LINKING THE BOTTOM OF A CLIFF WITH A ROCKY OUTCROP OPPOSITE. 16M X 9M, NOW MUCH TUMBLED, WALLS SURVIVE TO 1-2 COURSES HIGH.<1>		
13828	?LONG HUT, CADAIR IDRIS	SH71011532
POSS. LONG HUT MEASURING 9M X 5-6M EXTERNALLY, BUILT ON LEVELISH GROUND. QUITE WELL BUILT BUT NOW CONSIDERABLY COLLAPSED. POSS. GABLE ENDS, BUT NO SIGN OF INTERNAL SUB-DIVISIONS, WINDOWS OR FIREPLACE. DOORWAY JUST S OF CENTRE IN E SIDE. SIGNS OF POSSIBLE PLINTH AROUND DOORWAY. N END PARTLY TERRACED INTO SLIGHT SLOPE.<1>		
13829	ENCLOSURE, CADAIR IDRIS	SH70991529
CURIOUS ENCLOSURE, 6M X 5M, WALLS 1M WIDE AND 1.2M HIGH. PROBABLY 2 PHASES OF BUILDING. W WALL IS BEST PRESERVED, STANDING 1.2M HIGH AND C.1M WIDE.<1>		



<u>PRN</u>	<u>SITENAME</u>	<u>NGR</u>
13830	SHELTER, CADAIR IDRIS	SH71301500
SMALL OVAL STONE WALLED ENCLOSURE. 3M X 2.5M WITH WALLS 1.6M HIGH. ALIGNED E-W AND TERRACED INTO W FACING SLOPE. ENTRANCE IN THE W WALL. VERY TUMBLED BUT SOME EVIDENCE OF INNER FACING STONES.<1>		
13831	WALL, CADAIR IDRIS	SH71011535
SHORT STRETCH OF ROUGHLY BUILT WALL ON N EDGE OF PEAT BOG. AVERAGE 0.6M HIGH AND 0.5M WIDE.<1>		
13832	TRCAKWAY, CADAIR IDRIS	SH71201505C
TRACKWAY, 2M WIDE, WINDS UP STEEP HILL. STILL IN USE.<1>		
13833	SHEEPFOLD, CADAIR IDRIS	SH71991555
A SHEEPFOLD BUILT AT THE INTERSECTION OF TWO BOUNDARY WALLS, ONE OF WHICH FORMS THE N SIDE WALL. THE S SIDE CURVES ROUND TO AN ENTRANCE AT THE E END WHICH IS 1.2M WIDE. STRUCTURE MEASURES 11M X 6.5M, WALLS 1.5M HIGH.<1>		
13834	SHEEPFOLD, CADAIR IDRIS	SH72111545
A SUB-RECTAGULAR SHEEPFOLD, INTERNALLY SUBDIVIDED INTO 3 COMPARTMENTS. PROBABLY MORE THAN 1 PHASE OF CONSTRUCTION. MEASURES 9M X 6M, WALLS 1.1M HIGH.<1>		
13835	TRACKWAY, CADAIR IDRIS	SH72101570C
PATH - VERY HARD TO DISTINGUISH. SELECTIVE CLEARANCE ALONG ROUTE. TRAVERSES SLOPE AND IS BUILT UP AND STONE REVETTED IN PLACES.<1>		
13836	SHEEPFOLD, CADAIR IDRIS	SH72141555
BI-PARTITE SHEEPFOLD BUILT TO INCORPORATE BOUDARY WALL ALONG N & E SIDES. SUB-DIVIDED N-S. MAY BE TWO PHASES OF CONSTRUCTION. 10.5M X 5.5M, WALLS 1.5M HIGH.<1>		
13837	POSS. ENCLOSURE, CADAIR IDRIS	SH72181634
TRACES OF DRY-STONE WALLING - POSSIBLY PART OF AN ENCLOSURE SIYUATED BETWEEN TWO OUTCROPS. E. SIDE BEST PRESERVED WITH A GAP MIDWAY BETWEEN. WALLS MAINLY COLLAPSED.<1>		
13838	SHEEPFOLD, CADAIR IDRIS	SH72241533
D-SHAPED SHEEPFOLD, WEST EDGE STRAIGHT WITH CURVING D TO EAST. WALLS ROUGHLY BUILT, 4M X 3.5M, 0.8M HIGH.<1>		
13839	HAFOD, CADAIR IDRIS	SH72151527
A WELL BUILT DRY-STONE HUT WITH SURVIVING GABLES 3.5M HIGH. ENTRANCE HAS COLLAPSED. SMALL WINDOW IN E SIDE. MEASURES 7.3M X 5.7M. WALLS (EXCLUDING GABLES) 1.4M HIGH.<1>		
13840	SHEEPFOLD, CADAIR IDRIS	SH72381513
ORIGINALLY SUB-RECTANGULAR, APPEARS TO HAVE BEEN RE-BUILT AND SURVIVES AS A SUB-SQUARE DRY-STONE SHEEPFOLD, WITH AN ANNEXE ON THE E SIDE. TRACES OF WANDERING WALLS DOWNSLOPE. 8M X 5M, WALLS 1.5M HIGH.<1>		
13841	SHEEPFOLD, CADAIR IDRIS	SH72351513
DRY-STONE SUB-OVAL SHEEPFOLD BUILT INTO OUTCROPPING, ENTRANCE IN NE CORNER. ROUGHLY BUILT, 6.5M X 3.6M, WALLS 1M HIGH.<1>		
13843	HUT CIRCLES AND WALLS, CADAIR IDRIS	SH72431560A
ROUGH BOULDER WALL SKIRTING WHAT MAY BE A NATURAL BREAK IN SLOPE. ABOVE AND VELOW IT ARE TRACES OF AT LEAST 2 ENCLOSURES, POSSIBLY HUTS. THE AREA IS GENERALLY OBSCURED BY BRACKEN.<1>		

PRN	SITENAME	NGR
13844	SHEEPFOLD, CADAIR IDRIS	SH72151407
TRI-PARTITE SHEEPFOLD, 13.5M X 8.5M, WALLS 2M HIGH. THE NORTH SIDE OF THE FOLD IS RECTANGULAR AND SUBDIVIDED INTO 2 PARTS. BEHIND TO THE SOUTH IS A FURTHER COMPARTMENT, POLYGONAL IN SHAPE AND USING OUTCROPPING ON THE WEST SIDE.<1>		
13845	WALL, CADAIR IDRIS	SH72201414
CRUDELY BUILT 'SEMI-CIRCLE' OF WALLING, THE OPEN SIDE FACING SE. PROBABLY A SHEEPFOLD, BUT COULD BE A SHOOTING BUTT. 3.2M X 3.0M, HEIGHT 1M.<1>		
13846	ENCLOSURE, CADAIR IDRIS	SH72041423
SMALL SQUARE ENCLOSURE, ENTRANCE ON SE SIDE. 2.3M X 2.3M, WALLS 0.8M HIGH. POSSIBLY A LAMBING PEN OR SHOOTING BUTT.<1>		
13847	STONE STRUCTURE, CADAIR IDRIS	SH72071421
REMAINS OF L-SHAPED STRUCTURE, POSS. WINDBRAKE. 3M X 1M, 0.40M HIGH WALLS.<1>		
13848	ENCLOSURE, CADAIR IDRIS	SH72751415
REMAINS OF A SUB-SQUARE ENCLOSURE LYING ON A SLOPE, FACING NE. NO FACINGS OR ENTRANCE VISIBLE. 10M X 9M, WALLS 0.20M HIGH.<1>		
13849	SHEEPFOLD, CADAIR IDRIS	SH73241445
SHEEPFOLD.<1>		
13850	WALL, CADAIR IDRIS	SH72501561C
BOULDER WALL(S), PARALLEL AND TO THE NORTH OF THE MODERN BOUNDARY.<1>		
13852	TRACKWAY, CADAIR IDRIS	SH72851575C
PATH/TRACK PASSES THROUGH GATEWAY IN WALL, BECOMES A HOLLOWAY ON LOWER SLOPES.<1>		
13853	WALL, CADAIR IDRIS	SH72741572C
LENGTH OF COLLAPSED AND SPREAD WALLING, SUBDIVIDES NORTH OF TERRACE.<1>		
13854	ENCLOSURE, CADAIR IDRIS	SH72541575
SUB-SQUARE ENCLOSURE SITUATED ON A GENTLE NORTH FACING SLOPE. ROBBED RATHER TAHN COLLAPSED AND MEASURING 10M X 9M, WITH WALLS STANDING TO A HEIGHT OF 0.6M.<1>		
13855	RECTANGULAR STRUCTURE, CADAIR IDRIS	SH72641596
REMAINS OF A RECTANGULAR DRY-STONE BUILDING, SCARPED INTO N FACING SLOPE. SUBSTANTIALLY BUILT, 8.8M X 6.2M WITH WALLS STANDING UP TO 6 COURSES HIGH (1.7M). ENTRANCE HALF WAY DOWN N WALL. NO INTERNAL FITTINGS. POSSIBLE MINE BUILDING?<1>		



NGR  
SH72381605

SH72031607

SH73231598A

SH73281597

SH73671566

SH73771590

SH73801568

SH71751565C

PRN	SITENAME	NGR
13701	WALL, CADAIR IDRIS	SH71851465C
POSS. SHORT STRETCH OF WALL, C.0.3M HIGH AND C.0.3M WIDE. FEW STONE PLACED ON LINE OF OUTCROPPING, NOW ALL BUT DESTROYED. <1>		
13705	PEAT CUTTING, CADAIR IDRIS	SH71801483
AREA DEMARCATED BY STRAIGHT LINE RUNNING DOWNHILL WITH ROUGH JUNCUS-TYPE GRASS TO W AND MORE GRASSY GREEN TO EAST. POSS LATTER REPRESENTS AREA OF PAST PEAT CUTTING. <1>		
13842	PILE OF STONES, CADAIR IDRIS	SH72661487
A SMALL PILE OF STONES WITH A POSSIBLE STONE KERB TO MARK THE HIGHEST POINT IN THE AREA.		
13851	PEAT CUTTINGS?, CERRIG NIMBWL	SH71851405A
AN AREA OF POSSIBLE PEAT CUTTINGS. <1>		
13860	SHEEPFOLD, CADAIR IDRIS	SH73311542
A SUB-RECTANGULAR SHEEPFOLD, CONSTRUCTED OF DRY-STONE WALLING WITH SOME ROUGH FACING VISIBLE. IT IS BUILT ONTO THE FIELD WALL WITH ONE ENTRANCE AT THE EAST END AND A SHEEPCREEP <sup>1</sup> IN THE OPPOSITE (WEST) END. THE SW CORNER HAS COLLASPED. <1>		
13863	SHEPHERD SHELTER, CADAIR IDRIS	SH73191540
A ROUGHLY BUILT, DRY-STONE, 'L'-SHAPE STRUCTURE, ONE SIDE IS FORMED BY AN OUTCROP, WHILE THE REMAINS OF A RUINED DRY-STONE WALL ARE TO THE NORTH ENCLOSING THE AREA (1.75M BY 1M). <1>		
13862	SHEPHERD SHELTER, CADAIR IDRIS	SH73041551
A VERY ROUGHLY BUILT POSSIBLE SHEPHERD SHELTER, BUILT INTO AND ERODING PILE OF SCREE NEXT TO AN OUTCROP. VERY LOOSELY PILED STONE WALLS. <1>		
13864	CAIRN, CADAIR IDRIS	SH74391508
A SMALL PILE OF STONES, 3-4M IN DIAMETER, LOCATED ON A NATURAL SHELF ON A NORTH-FACING SLOPE. OBLONG IN SHAPE WITH THE POSSIBLE REMAINS OF A BUILT STRUCTURE VISIBLE. NO FIELD CLEARANCE IN THE AREA.		
13865	TRACKWAY, CADAIR IDRIS	SH74451472C
A TRACKWAY, MAINLY DEFINED BY (MODERN) VEHICLE RUTS, BUT STONE EDGED FOR AT LEAST 50M. IT EXTENDS ALMOST VERTICALLY UP A SMALL 'BWLCH' - PERHAPS FORMING A TRACK OVER THE RIDGE FROM S - N.		
13866	SHEEPFOLD, CADAIR IDRIS	SH74601482
A SHEEPFOLD WITH A DIVIDING WALL BUILT ON A NATURAL OUTCROP FUNNELLING SHEEP INTO A WELL-CONSTRUCTED FOLD SET AGAINST A NATURAL CRAG AND FIELD WALL. THERE IS ANOTHER FORMER PEN ATTACHED TO THE W SIDE, NOW WELL COLLASPED, POSSIBLY FOR SHEARING.		
13867	LONG HUT, CADAIR IDRIS	SH74091515
A MUCH-RUINED LONG HUT. WHERE THE LOWER COURSES SURVIVE THEY APPEAR WELL-BUILT, WITH ANGULAR CORNERS. SOME FACING IS ALSO VISIBLE. THERE IS A POSSIBLE INTERNAL DIVIDING WALL APPROXIMATELY CENTRAL. SURVIVES AS RUBBLE. IT IS LOCATED IN A SHELTERED AREA WITH A POSSIBLE ENCLOSING WALL PRESENT TO THE E. PRN'S 13868, 13869 AND 13870 ARE ASSOCIATED.		
13868	TRACKWAY, CADAIR IDRIS	SH74111523C
A TRACKWAY MARKED AS A PATH ON THE OS MAP. NOW MAINLY MARKED BY VEHICLE TRACKS AND SHEEP TRACKS. A NATURAL BOULDER DIRECTLY OUTSIDE NW CORNER OF PRN 13867 HAS BEEN WORN BY TRAFFIC.		
13869	SHEEPFOLD, CADAIR IDRIS	SH74051512
A SMALL DRY-STONE BUILT SHEEPFOLD, C. 5M BY 1.5M, BUILT UP AGAINST THE E SIDE OF A LARGE NATURAL BOULDER. IT IS 3/4 COURSES HIGH, WELL-PRESERVED WITH A LEVEL INTERIOR. ASSOCIATED WITH PRN 13867.		

- |  |                                     |             |
|--|-------------------------------------|-------------|
| <u>PRN</u>   | <u>SITENAME</u>                     | <u>NGR</u>  |
| 13870  | SHEEPFOLD, CADAIR IDRIS             | SH74091513  |
| A SHEEPFOLD BUILT AGAINST THE N FACE OF A NATURAL CRAG. ROUGHLY BUILT DRY-STONE WALLING. NOW MUCH TUMBLED. ENTRANCE PROBABLY IN THE NE PART OF THE WALL.   |                                     |             |
| 13871  | WALL, CADAIR IDRIS                  | SH74161527C |
| A SHORT LENGTH OF WELL-BUILT WALL, WITH AN ORTHOSTAT AT N END, TUMBLE AT THE CENTRE, 12M BY 0.6M. SHEEP SHELTER?   |                                     |             |
| 13872  | WALL, CADIAR IDRIS                  | SH73831507C |
| A SHORT LENGTH, C.20M BY 0.4M, OF POORLY-PRESERVED DRY-STONE WALLING, CUTTING OFF A FLAT, PEATY BEND IN THE STREAM. ONLY 1-2 COURSES HIGH, NO OBVIOUS FUNCTION.  |                                     |             |
| 13873  | LONG HUT?/SHEEPFOLD, CADAIR IDRIS   | SH74411505  |
| A DRY-STONE, ROUGHLY BUILT SHEEPFOLD, 5M BY 4M, WITH A LINTELLED SHEEPCREEP AT THE REAR AND ENTRANCE TO THE NW. THE WALLS SURVIVE TO A HEIGHT OF 1.5M. TO THE E AND PROBABLY EARLIER THAN THE SHEEPFOLD, THERE IS A LOW RUINED ENCLOSURE, 5.5M BY 5M, WALLS SURVIVE TO 0.5M IN HEIGHT. THIS STRUCTURE APPEARS TO BE UNDERLYING THE LATER SHEEPFOLD AND MAY BE A LONG HUT. IT ALSO HAS ROUNDED CORNERS. TO THE N THERE IS A VERY RUINED STONE ENCLOSURE WALL. |                                     |             |
| 13874  | TRIALS, CADAIR IDRIS                | SH74451519  |
| THREE PARALLEL LINEAR DEPRESSION, CUT INTO THE N-FACING SLOPE. UP TO 2M DEEP AND 10M LONG WITH BARE ROCK EXPOSED UPSLOPE.  |                                     |             |
| 13875  | SHEEPFOLD, CADAIR IDRIS             | SH74121505  |
| A MODERN DRY-STONE SHEEPFOLD, BUILT ON AN OUTCROP. IT CONSISTS OF TWO COMPARTMENTS WITH ADJOINING SHEEPCREEP AND A LENGTH OF DRY-STONE WALLING FORMING A SHEEP LEA.  |                                     |             |
| 13876  | PILE OF BOULDERS, CADAIR IDRIS      | SH74001540  |
| A LINEAR PILE OF LARGE BOULDERS, C. 5M LONG, ADJACENT TO WIRE FENCE. MAY BE REMAINS OF AN INTENDED FIELD WALL OR COVERING A STREAM SOURCE.   |                                     |             |
| 13877  | LONG HUT?/SHEEPFOLD, CADAIR IDRIS   | SH73951520  |
| A RUINED DRY-STONE BUILDING C. 11M BY 7M. AT THE NW END THERE IS A STONY PLATFORM IN LINE WITH THE SHORT SPUR OF DRY-STONE WALLING. THIS MAY BE THE REMAINS OF AN EARLIER STRUCTURE (LONG HUT?).   |                                     |             |
| 13878  | SHEEP PEN?, CADAIR IDRIS            | SH73961521  |
| A SMALL, 6M BY 4M, VERY RUINED, SUB-RECTANGULAR STRUCTURE, CONSTRUCTED OF LARGE BOULDERS WITH SMALL STONES USED AS FILL. A DENUED STONE WALL RUNS IN A NE DIRECTION FROM THE STRUCTURE TOWARDS OUTCROPPING.  |                                     |             |
| 13879  | SHEEPFOLD, CADAIR IDRIS             | SH73971539  |
| A DRY-STONE WALLED, SUB-RECTANGULAR SHEEPFOLD BUILT ONTO THE FIELD WALL, 8.5M BY 5M. THE WALLS ARE 2M HIGH AND THERE ARE TWO ENTRANCES EITHER END, THE W ONE IS BLOCKED AND AN ORTHOSTAT MARKS THE E ONE. A WALL OF LARGE BOULDERS, 5M LONG, IS LOCATED AT THE SE CORNER, RUNNING N-S.   |                                     |             |
| 13597  | PEAT STACK?, CADAIR IDRIS           | SH74691524  |
| A SMALL SUB-OVAL STONE 'ENCLOSURE', ONE COURSE HIGH. IT IS BUILT ON A VALLEY SLOPE (AXIS AT 90 DEGREES TO THE SLOPE), NOT CUT INTO IT.   |                                     |             |
| 13609  | PEAT STACK?, CADAIR IDRIS           | SH74701517  |
| A SMALL SUB-OVAL STONE 'ENCLOSURE', 5M BY 2M, BUILT ON THE SIDE OF A VALLEY SLOPE ON THE EDGE OF A WET, BOGGY AREA.  |                                     |             |
| 13684  | RECTANGULAR STRUCTURE, CADAIR IDRIS | SH74711522  |
| A VERY DENUED RECTANGULAR STRUCTURE, 5M BY 3M, ORIENTATED N-S.   |                                     |             |

PRN	SITENAME	NGR
13880	PEAT STACK, CADAIR IDRIS	SH74761514
A SMALL, 8M BY 4M, SUB-OVAL STONE ENCLOSURE, ONE COURSE HIGH. IT IS LOCATED ON A VALLEY SLOPE ON THE EDGE OF A BOGGY AREA.		
13881	CAIRN?, CADAIR IDRIS	SH74801536
A POSSIBLE CAIRN, 2M IN DIAMETER, WITH A CENTRAL DEPRESSION, A POSSIBLE CIST. LOCATED BETWEEN TWO OUTCROPS.		
13882	STONE PILE, CADAIR IDRIS	SH74951529
A LINEAR STONE PILE, 3M BY 1M, POSSIBLE USED AS A SHELTER RATHER THAN CLEARANCE.		
20864	IRONSTONE MINE, CADAIR IDRIS	SH74951555
A LINEAR TRENCH, C. 30M LONG AND UP TO 8M DEEP. SPOIL TIPS ARE LOCATED TO THE S AND ON BOTH SIDES OF THE TRENCH.		
13883	LONG HUT?, CADAIR IDRIS	SH74701510
THE POSSIBLE REMAINS OF A LONG HUT UNDERLYING A LATER DRY-STONE SHEEPFOLD ON A SLIGHTLY DIFFERENT ALIGNMENT. THE VERY DENUDED LONG HUT SURVIVES AS SUB-RECTANGULAR STONE SETTINGS, ALIGNED E-W. IT APPEARS TO HAVE ROUNDED CORNERS.		
13884	PEAT STACK?, CADAIR IDRIS	SH74721522
A SMALL, 6M BY 2M, SUB-OVAL STONE ENCLOSURE, ONE COURSE HIGH. THE INTERIOR IS SUB-DIVIDED BY A LOW STONE WALL INTO TWO COMPARTMENTS, THE SMALLER ONE 2M BY 2M. IT IS LOCATED ON A VALLEY SLOPE, NOT CUT INTO IT SO THAT THE INTERIOR IS SLOPING.		
13885	MINE, CADAIR IDRIS	SH74681539
A LINEAR TRENCH, C. 20M BY 10M, WITH EXPOSED OUTCROPPING AT THE N END. THE TRENCH IS FULL OF WATER AT THE S END AND THERE ARE SPOIL TIPS ON BOTH SIDES, ESPECIALLY THE W SIDE. PROBABLY AN IRONSTONE MINE.		
13886	TRACKWAY, CADAIR IDRIS	SH74831568C
A DEEPLY CUT, NARROW TRACKWAY LEADING FROM THE IRONSTONE COMPLEX (PRN 20864) DOWN THE VALLEY. IN PLACES IT IS C. 2M DEEP WITH A STONE BANK PRESUMABLY EXCAVATED FROM THE TRACK AT THE SIDE. THE WIDTH OF THE TRACK (1M) SUGGESTS EITHER A FOOT OR ANIMAL TRACK.		
13618	HOUSE PLATFORM, S OF BWLCH-COCH FARM	SH
AN ARTIFICIAL PLATFORM, C. 11M BY 8M, CUT INTO THE SLOPE ON THE EAST SIDE OF A STREAM AT NINETY DEGREES TO THE SLOPE. IT IS ALIGNED NE-SW AND TERRACED C. 1M AT THE REAR, WHERE A BANK CURVES ROUND PART OF THE WESTERN SIDE AND SE CORNER WHICH IS PARTLY ERODED. THE N END IS FORMED BY A NUMBER OF EARTH-FAST STONES, NOW GRASS COVERED.		
13887	HOUSE PLATFORM, S OF BWLCH-COCH FARM	SH
A PLATFORM, C. 10M BY 8M, CUT INTO THE SLOPE. THE N END APPEARS TO HAVE BEEN BUILT UP SLIGHTLY, THOUGH, THE E SIDE IS LESS WELL-DEFINED.		
13888	HOUSE PLATFORM, S OF BWLCH-COCH FARM	SH
LOCATED TO THE N OF PRN 13730, A VERY INDISTINCT PLATFORM CUT INTO THE SLOPE C. 10M BY 8M IN SIZE. A BANK IS DISCERNABLE FORMING THE S END OF THE W SIDE.		
13889	HOUSE PLATFORM, S OF BWLCH-COCH FARM	SH
A WELL DEFINED PLATFORM, DEFINED ON THE UPPER SIDE BY A BANK, THE LOWER EDGE IS INDISTINCT BUT IT APPEARS TO TERMINATE ABOVE THE DRY-STONE FIELD WALL DIRECTLY TO THE N. IT IS 10M BY 6M IN SIZE AND ORIENTATED N-S. SOME ORTHOSTATS ARE VISIBLE IN THE BANK.		
4113	HOUSE PLATFORM, S OF BWLCH-COCH FARM	SH
A PLATFORM IN FAIRLY GOOD CONDITION, ORIENTATED N-S AND 17M BY 8M IN SIZE. THE UPPER, S END IS DEFINED BY A BANK UP TO 0.7M HIGH AND 0.4M WIDE. A VEHICLE TRACK CROSSES THE PLATFORM.		



<u>PRN</u>	<u>SITENAME</u>	<u>NGR</u>
13890	HUT CIRCLE, S OF BWLCH-COCH FARM	SH74401533
A HUT CIRCLE, C. 5M IN DIAMETER, LOCATED TO THE E OF PRN 13618 (HOUSE PLATFORM). THE WALLS APPEAR TO BE FACED IN PLACES WITH THE ENTRANCE, C. 1M WIDE, TO THE SW. A MODERN TRACK HAS SLIGHTLY DAMAGED THE SE SIDE OF THE STRUCTURE.		

Records printed: 298

**APPENDIX II : SITE LIST FROM GWYNEDD SITES AND MONUMENTS RECORD**

PRN	SITENAME	NGR
4113	HOUSE PLATFORM, S OF BWLCH-COCH FARM	SH74351533
762	WALL, S OF CHWAREL PENRHYN-GWYN CADAIR IDRIS	SH70321429
3595	HUT PLATFORM, CADAIR IDRIS	SH70171437
13596	STONE WALL, S OF GWERNAN LAKE HOTEL	SH70481567C
3597	PEAT STACK?, CADAIR IDRIS	SH74691524
3598	SHEPHERD SHELTER, E OF TYDDYN MAWR FARM	SH70871536
13599	SHEEPFOLD, CADAIR IDRIS	SH73671566
13600	SHEPHERD SHELTER, E OF TYDDYN MAWR FARM	SH70801546
3601	WALL, NE OF TYDDYN MAWR FARM	SH70731557
13602	FARMSTEAD/HAFOD, SE OF TYDDYN MAWR	SH70781523
13603	RECTANGULAR STRUCTURE, CADAIR IDRIS	SH73771590
3604	WALL, SE OF TYDDYN MAWR FARM	SH70761522C
3605	SHEEP ENCLOSURES/PENS, SE OF TYDDYN MAWR FARM	SH70761529
13606	WALL, SE OF DYFFRYDAN CADAIR IDRIS	SH69711466C
3607	LEAT?, SE OF DYFFRYDAN CADAIR IDRIS	SH69681473
3608	WALL, SE OF DYFFRYDAN CADAIR IDRIS	SH69711471C
13609	PEAT STACK?, CADAIR IDRIS	SH74701517
13610	LEAT?, SE OF DYFFRYDAN CADAIR IDRIS	SH69741467C
3611	HUT CIRCLE, CADAIR IDRIS	SH69961467
3612	HUT CIRCLE, CADAIR IDRIS	SH69961466
13613	WALL, SW OF CHWAREL PENRHYN-GWYN	SH70101472C
3614	TRACK, PONY PATH CADAIR IDRIS	SH69731468C
3615	ARTIFICIAL POOL, SW OF CHWAREL PENRHYN-GWYN	SH69901433
13616	SHEEPFOLD, SW OF CHWAREL PENRHYN-GWYN CADAIR IDRIS	SH69961438
3617	TRACKWAY, CADAIR IDRIS	SH73801568
3618	HOUSE PLATFORM, S OF BWLCH-COCH FARM	SH
13619	POSS.HAFOD/LONG HUT, CADAIR IDRIS	SH70201428
13620	ENCLOSURE, SW OF CHWAREL PENRHYN-GWYN CADAIR IDRIS	SH70211426
3621	ENCLOSURE, SW OF CHWAREL PENRHYN-GWYN CADAIR IDRIS	SH70231425
3622	HUT PLATFORM/BARN, NR TYDDYN MAWR	SH70331531
13623	WALL, CADAIR IDRIS	SH71751565C
3624	SHEEPFOLD COMPLEX, S OF CHWAREL PENRHYN-GWYN	SH70311426
3625	FIELD CLEARANCE, W OF BWLCH-COCH CADAIR IDRIS	SH74351591C
13626	CLEARANCE CAIRN, NW OF BWLCH-COCH CADAIR IDRIS	SH74241596
13627	CLEARANCE CAIRNS, NW OF BWLCH-COCH CADAIR IDRIS	SH74251605
3628	CLEARANCE CAIRNS, NW OF BWLCH-COCH CADAIR IDRIS	SH74241606
13629	CLEARANCE CAIRN, NW OF BWLCH-COCH CADAIR IDRIS	SH74221607
13630	FIELD CLEARANCE, NE OF MAES-COCH CADAIR IDRIS	SH74351582
3631	CLEARANCE CAIRNS, E OF MAES-COCH CADAIR IDRIS	SH74441577A
3632	SHEEPFOLD, CADAIR IDRIS	SH74441572
13633	FIELD CLEARANCE, SE OF MAES COCH CADAIR IDRIS	SH74451566
3634	POSS. HUT CIRCLE, CADAIR IDRIS	SH74441565
3635	SHEEPFOLD, SE OF MAES-COCH CADAIR IDRIS	SH74531557
13636	SHEEPFOLD, SE OF MAES-COCH CADAIR IDRIS	SH74651573
13637	WALL, SE OF MAES-COCH CADAIR IDRIS	SH74651548
3638	WALL, SE OF MAES-COCH CADAIR IDRIS	SH74331575
3639	CLEARANCE CAIRN, SE OF MAES-COCH CADAIR IDRIS	SH74351573
13640	CLEARANCE CAIRN, SE OF MAES-COCH CADAIR IDRIS	SH74461563
3641	CLEARANCE CAIRN, S OF MAES-COCH CADAIR IDRIS	SH74331557
3642	CLEARANCE CAIRNS, SW OF MAES-COCH CADAIR IDRIS	SH74251565A
13643	CLEARANCE CAIRNS, S OF MAES-COCH CADAIR IDRIS	SH74351545
13644	STONE KERB, S OF MAES-COCH CADAIR IDRIS	SH74271541
3645	STANDING STONE, S OF MAES-COCH CADAIR IDRIS	SH74301239
13646	SHELTER, CADAIR IDRIS	SH74271537
13647	SHEEPFOLD, CADAIR IDRIS	SH74281535
3648	ENCLOSURE, CADAIR IDRIS	SH74271535
3649	STONE BANK, S OF MAES-COCH CADAIR IDRIS	SH74261533C

<u>RN</u>	<u>SITENAME</u>	<u>NGR</u>
13650	WALL, S OF MAES-COCH CADAIR IDRIS	SH74271535
3651	CLEARANCE CAIRNS, S OF MAES-COCH CADAIR IDRIS	SH74357530
3652	WALL, N OF LLYN ARRAN CADAIR IDRIS	SH73931476C
13653	PEAT CUTTING, NE OF LLYN ARRAN CADAIR IDRIS	SH74111474
*3654	SHEPHERD SHELTER/SHEEPFOLD, NE OF LLYN ARRAN	SH74131474
3655	SHEEPFOLD, CADAIR IDRIS	SH74131474
13656	PEAT CUTTING, NE OF LLYN ARRAN CADAIR IDRIS	SH74201475A
13657	SHEPHERD SHELTER, NE OF LLYN ARRAN CADAIR IDRIS	SH74021457
3658	ENCLOSURE, NE OF LLYN ARRAN CADAIR IDRIS	SH74001445
3659	SHELTER?, NE OF LLYN ARRAN CADAIR IDRIS	SH73991448
13660	SHEPHERD SHELTER	SH73941440
*3661	?ENCLOSURE, CADAIR IDRIS	SH73911420
3662	WALL, NE OF LLYN ARRAN CADAIR IDRIS	SH73911417
13663	STONE BANK?, NE OF LLYN ARRAN CADAIR IDRIS	SH73801409C
*3664	SHEPHERD SHELTER, NE OF LLYN ARRAN CADAIR IDRIS	SH73791406
3665	SHEPHERD/WALKERS SHELTER, E OF LLYN ARRAN	SH73601386
13666	?SHELTERS, E OF LLYN ARRAN CADAIR IDRIS	SH73571384
13667	STANDING STONE, S OF LLYN ARRAN CADAIR IDRIS	SH73431380
3668	SHEPHERD/WALKERS SHELTER, S OF LLYN ARRAN	SH73411380
3669	ENCLOSURE, S OF LLYN ARRAN CADAIR IDRIS	SH73391379
13670	ENCLOSURE, S OF LLYN ARRAN CADAIR IDRIS	SH73391392
*3671	SHEEPFOLD, S OF LLYN ARRAN CADAIR IDRIS	SH73391385
3672	SHEEPFOLD, NE OF LLYN ARRAN CADAIR	SH73991461
13673	PEAT HOUSE/SHELTER, NE OF LLYN ARRAN CADAIR IDRIS	SH73961474
13674	PEAT CUTTINGS, E OF CHWAREL PENRHYN-GWYN	SH70931493A
3675	CULVERT; N OF LLYN GAFR CADAIR IDRIS	SH71171490
13676	TRIAL/LEVEL N OF LLYN GAFR CADAIR IDRIS	SH71231476
13677	TRIAL/LEVEL?, N OF LLYN GAFR CADAIR IDRIS	SH71231475
3678	WALL, N OF LLYN GAFR CADAIR IDRIS	SH71271474
3679	ENCLOSURE, N OF LLYN GAFR CADAIR IDRIS	SH71191474
13680	PLATFORM, N OF LLYN GAFR CADAIR IDRIS	SH71171473
*3681	SHEEPFOLD & ENCLOSURE, N OF LLYN Y GAFR	SH71161473
3682	PEAT CUTTINGS; N OF LLYN GAFR CADAIR IDRIS	SH71031463A
13683	HUT CIRCLE, N OF LLYN Y GAFR	SH71011453
13684	RECTANGULAR STRUCTURE, CADAIR IDRIS	SH74711522
3685	ENCLOSURE; N OF LLYN GAFR CADAIR IDRIS	SH71181442
3686	HUT CIRCLE, CADAIR IDRIS	SH71021424
13687	MOUND; SE OF TYDDYN-MAWR CADAIR IDRIS	SH70631530
*3688	PLATFORM; SE OF TYDDYN-MAWR CADAIR IDRIS	SH70611530
3689	PLATFORM; SE OF TYDDYN-MAWR CADAIR IDRIS	SH70611529
13690	PLATFORM; E OF TYDDYN-MAWR CADAIR MAWR	SH70571544
*3691	CLEARANCE CAIRN; E OF TYDDYN-MAWR CADAIR IDRIS	SH70541546
3692	CLEARANCE CAIRN; E OF TYDDYN-MAWR CADAIR IDRIS	SH70531546
13693	TRACK; NE OF TYDDYN-MAWR CADAIR IDRIS	SH70491551
13694	WALL; CHWAREL PENRHYN-GWYN CADAIR IDRIS	SH70401497C
3695	WALL; CHWAREL PENRHYN-GWYN CADAIR IDRIS	SH70491487C
3696	WALL; E OF CHWAREL PENRHYN-GWYN CADAIR IDRIS	SH70551485C
13697	PLATFORM, CADAIR IDRIS	SH70481478
*3698	POSS. LONG HUT, CADAIR IDRIS	SH70321469
3699	TRIAL, CADAIR IDRIS	SH70231463
13700	CLEARANCE CAIRN, CADAIR IDRIS	SH70311457
13701	WALL, CADAIR IDRIS	SH71851465C
3702	SHEEP-CREEPS, CADAIR IDRIS	SH70641468C
13703	SHEEP-CREEP, CADAIR IDRIS	SH69871456C
13704	ENCLOSURE, CADAIR IDRIS	SH69871460
3705	PEAT CUTTING, CADAIR IDRIS	SH71801483
3706	SHEEPFOLD, S. CHWAREL PENRHYN	SH70251450
13707	ORTHOSTAT, CADAIR IDRIS	SH70851432
*3708	HUT CIRCLE, CADAIR IDRIS	SH70281421
3709	CAIRN, W OF LLYN Y GAFR	SH70871418
13710	CAIRN, CADAIR IDRIS	SH70891417
13711	SHEEPFOLD/ENCLOSURE, W OF LLYN Y GAFR	SH70841419
3712	RECTANGULAR FOUNDATIONS, CADAIR IDRIS	SH70831425
13713	BUILDING & ENCLOSURE, CADAIR IDRIS	SH70661413A



<u>RN</u>	<u>SITENAME</u>	<u>NGR</u>
13714	SHEEPFOLD, CADAIR IDRIS	SH70961457
3715	FIELD CLEARANCE, W BWLCH COCH	SH74251595
3716	CLEARANCE HEAP, TY'N Y BRYN	SH74231605
13717	FORMER PUBLIC HOUSE, TY'N Y FFORDD FAWR	SH74391583
*3718	TRACKWAY, TY'N Y FFRIDD	SH74391579C
3719	CLEARANCE CAIRNS, TY'N Y FFORDD FAWR	SH74491575A
13720	TRACKWAY, BWLCH COCH	SH74501583C
13721	ENCLOSURE, S OF MAES COCH	SH74461563C
3722	BOULDER WALL, SE OF MAES COCH	SH74691569C
3723	SHEEPFOLD, CADAIR IDRIS	SH74591559
13724	SHEEPFOLD, CADAIR IDRIS	SH74551554
3725	CLEARANCE HEAPS, MAES COCH	SH74331570C
3726	TRACKWAY, S OF MAES COCH	SH74331563C
13727	WALL, S OF MAES COCH	SH74341561
*3728	WALL, CADAIR IDRIS	SH74151543
3729	CLEARANCE CAIRN, CADAIR IDRIS	SH74401537
13730	WALL, CADAIR IDRIS	SH7441533C
13731	TRACKWAY, CADAIR IDRIS	SH73851479C
3732	SHEEPFOLD, CADAIR IDRIS	SH73781483
3733	PEAT CUTTING, CADAIR IDRIS	SH73721476
13734	SHEEPSHELTER, CADAIR IDRIS	SH73681467
*3735	LONG HUT, CADAIR IDRIS	SH73631462
3736	NATURAL FEATURE, CADAIR IDRIS	SH73361455
13737	PEAT CUTTING, CADAIR IDRIS	SH73641458
13738	MOUND, CADAIR IDRIS	SH73311432
3739	SHEEPFOLD, LLYN ARRAN	SH73531388
3740	ENCLOSURE, LLYN ARRAN	SH73471393
13741	FEATURE, LLYN ARRAN	SH73481398
3742	CAIRN, CADAIR IDRIS	SH73751454
3743	PEAT CUTTING, CADAIR IDRIS	SH70701509
13744	ENCLOSURE, CADAIR IDRIS	SH70551513
*3745	TRACKWAY, CADAIR IDRIS	SH70551508
3746	PEAT CUTTING, CADAIR IDRIS	SH70451516A
13747	TRACKWAY, E OF PENRHYN GWYN	SH70391510
13748	HOUSE & ENCLOSURE, CADAIR IDRIS	SH70461512
3749	FIELD WALL, E OF PENRHYN GWYN	SH70501510C
3750	PEAT CUTTING, CADAIR IDRIS	SH70541505C
13751	PLATFORM; N OF LLYN GAFR CADAIR IDRIS	SH71001428
3752	?CAIRN; N OF LLYN GAFR CADAIR IDRIS	SH71051432
3753	POSS. CAIRN, CADAIR IDRIS	SH71101427
13754	WALL, CADAIR IDRIS	SH71381486
*3755	SHEEPFOLD, CADAIR IDRIS	SH71251485
3756	SLUICE, LLYN Y GAFR	SH70961422
3757	SHEEPFOLD, CADAIR IDRIS	SH72431558
13758	SHEEPFOLD, CADAIR IDRIS	SH72961563
3759	WALL, CADAIR IDRIS	SH72831532
3760	POSS. HUT CIRCLE, CADAIR IDRIS	SH72841528
13761	STONE HEAP, CADAIR IDRIS	SH72931493
*3762	SHELTER, CADAIR IDRIS	SH72511509
3763	WALL, CADAIR IDRIS	SH72511509
13764	STANDING STONE, E OF LLYN Y GAFR	SH71371421
13765	WALL, LLYN Y GAFR	SH71251403C
3766	HUT CIRCLE, CADAIR IDRIS	SH71131399
3767	WALL, CADAIR IDRIS	SH71051406
13768	SUB-RECTANGULAR FEATURE, CADAIR IDRIS	SH71291401
3769	SHELTER & ENCLOSURE, CERRIG NIMBWL	SH71801395
3770	WALL, CARREG NIMBWL	SH71821396C
13771	SHEEPFOLD, CADAIR IDRIS	SH72581444
*3772	SHELTER, CADAIR IDRIS	SH76211571
3773	WALL, CADAIR IDRIS	SH73021556
13774	ENCLOSURE, CADAIR IDRIS	SH73301477
13775	HAFOD/SHEEPFOLD, CADAIR IDRIS	SH73331490
3776	SHEEPFOLD, CADAIR IDRIS	SH73401490
3777	LEVEL, CADAIR IDRIS	SH73391505

<u>RN</u>	<u>SITENAME</u>	<u>NGR</u>
13778	POSS.SHELTER, CADAIR IDRIS	SH73271518
3779	SHELTER, CADAIR IDRIS	SH73651502
3780	SHEEPFOLD, CADAIR IDRIS	SH73651505
13781	SHEEPFOLD, CADAIR IDRIS	SH73641507
*3782	TRIAL LEVEL, CADAIR IDRIS	SH73711505
3783	BARN, CADAIR IDRIS	SH73151598
13784	SHEEPFOLD, CADAIR IDRIS	SH73341597
13785	QUARRIES, CADAIR IDRIS	SH73371594
3786	WALL, CADAIR IDRIS	SH73371590
3787	TRACKWAY, CADAIR IDRIS	SH73601593
13788	BANK AND DITCH, CADAIR IDRIS	SH73501592
3789	WALL, CADAIR IDRIS	SH73231580
3790	WALL AND PLATFORM, CADAIR IDRIS	SH73231581
13791	DRAINAGE CHANNEL/TRACKWAY, CADAIR IDRIS	SH73101583C
*3792	WALL, CADAIR IDRIS	SH70671555C
3793	SUB-RECTANGULAR STRUCTURE, CADAIR IDRIS	SH70601577
13794	WALL, CADAIR IDRIS	SH70571574
13795	REVETMENT, CADAIR IDRIS	SH70581576
3796	SHELTER, CADAIR IDRIS	SH70471566
3797	SHEEPFOLD, E OF TYDDYN MAWR	SH70881553
13798	POSS. HAFOD, CADAIR IDRIS	SH70931555
*3799	POSS. LONG HUT, CADAIR IDRIS	SH70901554
3800	POSS. PEAT STACK, CADAIR IDRIS	SH70871556
13801	WALL, CADAIR IDRIS	SH71121545C
13802	WALL, CADAIR IDRIS	SH71301537C
3803	WALL, CADAIR IDRIS	SH71351567
3804	WALL, CADAIR IDRIS	SH71271563
13805	SHEEPFOLDS, CADAIR IDRIS	SH71191565
3806	WALL, CADAIR IDRIS	SH71151580C
3807	REVETMENT, CADAIR IDRIS	SH71131578C
13808	TRACKWAY, CADAIR IDRIS	SH71131583C
*3809	STONE PILE, CADAIR IDRIS	SH71751585
3810	WALL, CADAIR IDRIS	SH71671580C
13811	WALL, CADAIR IDRIS	SH71661586
13812	HUT CIRCLE, CADAIR IDRIS	SH76371592
3813	SHEEPFOLD, CADAIR IDRIS	SH71831436
3814	ENCLOSURE, NE LLYN Y GAFR	SH71651440
13815	WALL, E OF LLYN Y GAFR	SH71871437C
3816	WALL, CADAIR IDRIS	SH72021432C
3817	SHELTER, CADAIR IDRIS	SH72101457
13818	SHEEPFOLD, CADAIR IDRIS	SH71401530
*3819	?ENCLOSURE, CADAIR IDRIS	SH71461536C
3820	SHEEPFOLD, CADAIR IDRIS	SH71321535
13821	SHEEPFOLD, CADAIR IDRIS	SH71311533
13822	POSS. SHEEPFOLD,	SH71671541
3823	SHEEPFOLD, CADAIR IDRIS	SH71661547
3824	WALL, SE OF PENRHYN GWYN	SH70501494C
13825	PEAT CUTTING, CADAIR IDRIS	SH70831476
*3826	PEAT CUTTING, CADAIR IDRIS	SH70991539A
3827	ENCLOSURE, CADAIR IDRIS	SH71081528
13828	?LONG HUT, CADAIR IDRIS	SH71011532
13829	ENCLOSURE, CADAIR IDRIS	SH70991529
3830	SHELTER, CADAIR IDRIS	SH71301500
3831	WALL, CADAIR IDRIS	SH71011535
13832	TRCAKWAY, CADAIR IDRIS	SH71201505C
3833	SHEEPFOLD, CADAIR IDRIS	SH71991555
3834	SHEEPFOLD, CADAIR IDRIS	SH72111545
13835	TRACKWAY, CADAIR IDRIS	SH72101570C
*3836	SHEEPFOLD, CADAIR IDRIS	SH72141555
3837	POSS. ENCLOSURE, CADAIR IDRIS	SH72181634
13838	SHEEPFOLD, CADAIR IDRIS	SH72241533
13839	HAFOD, CADAIR IDRIS	SH72151527
3840	SHEEPFOLD, CADAIR IDRIS	SH72381513
3841	SHEEPFOLD, CADAIR IDRIS	SH72351513

<u>RN</u>	<u>SITENAME</u>	<u>NGR</u>
13842	PILE OF STONES, CADAIR IDRIS	SH72661487
3843	HUT CIRCLES AND WALLS, CADAIR IDRIS	SH72431560A
3844	SHEEPFOLD, CADAIR IDRIS	SH72151407
13845	WALL, CADAIR IDRIS	SH72201414
*3846	ENCLOSURE, CADAIR IDRIS	SH72041423
3847	STONE STRUCTURE, CADAIR IDRIS	SH72071421
13848	ENCLOSURE, CADAIR IDRIS	SH72751415
13849	SHEEPFOLD, CADAIR IDRIS	SH73241445
3850	WALL, CADAIR IDRIS	SH72501561C
3851	PEAT CUTTINGS?, CERRIG NIMBWL	SH71851405A
13852	TRACKWAY, CADAIR IDRIS	SH72851575C
3853	WALL, CADAIR IDRIS	SH72741572C
3854	ENCLOSURE, CADAIR IDRIS	SH72541575
13855	RECTANGULAR STRUCTURE, CADAIR IDRIS	SH72641596
*3856	TRIAL, CADAIR IDRIS	SH72381605
3857	PLATFORM, CADAIR IDRIS	SH72031607
13858	ENCLOSURE, CADAIR IDRIS	SH73231598A
13859	SHEEPFOLD, CADAIR IDRIS	SH73281597
3860	SHEEPFOLD, CADAIR IDRIS	SH73311542
3862	SHEPHERD SHELTER, CADAIR IDRIS	SH73041551
13863	SHEPHERD SHELTER, CADAIR IDRIS	SH73191540
3864	CAIRN, CADAIR IDRIS	SH74391508
3865	TRACKWAY, CADAIR IDRIS	SH74451472C
13866	SHEEPFOLD, CADAIR IDRIS	SH74601482
*3867	LONG HUT, CADAIR IDRIS	SH74091515
3868	TRACKWAY, CADAIR IDRIS	SH74111523C
3869	SHEEPFOLD, CADAIR IDRIS	SH74051512
13870	SHEEPFOLD, CADAIR IDRIS	SH74091513
3871	WALL, CADAIR IDRIS	SH74161527C
3872	WALL, CADIAR IDRIS	SH73831507C
13873	LONG HUT?/SHEEPFOLD, CADAIR IDRIS	SH74411505
*3874	TRIALS, CADAIR IDRIS	SH74451519
3875	SHEEPFOLD, CADAIR IDRIS	SH74121505
13876	PILE OF BOULDERS, CADAIR IDRIS	SH74001540
13877	LONG HUT?/SHEEPFOLD, CADAIR IDRIS	SH73951520
3878	SHEEP PEN?, CADAIR IDRIS	SH73961521
3879	SHEEPFOLD, CADAIR IDRIS	SH73971539
13880	PEAT STACK, CADAIR IDRIS	SH74761514
3881	CAIRN?, CADAIR IDRIS	SH74801536
3882	STONE PILE, CADAIR IDRIS	SH74951529
13883	LONG HUT?, CADAIR IDRIS	SH74701510
*3884	PEAT STACK?, CADAIR IDRIS	SH74721522
3885	MINE, CADAIR IDRIS	SH74681539
13886	TRACKWAY, CADAIR IDRIS	SH74831568C
13887	HOUSE PLATFORM, S OF BWLCH-COCH FARM	SH
3888	HOUSE PLATFORM, S OF BWLCH-COCH FARM	SH
3889	HOUSE PLATFORM, S OF BWLCH-COCH FARM	SH
13890	HUT CIRCLE, S OF BWLCH-COCH FARM	SH74401533
3864	IRONSTONE MINE, CADAIR IDRIS	SH74951555

Records printed: 298

### APPENDIX III : SURVEY FORMS



PROJECT <small>name &amp; number</small>	MAP SHEET No.	AREA	NUMBER	
NGR	ELEVATION	TYPE	stone wall bank ditch track clearance other mod. fence	
TYPE EXAMPLE	poor average good v. good	VISIBILITY (m)	500+ 2-500 1-200 50-100 20-50 10-20 <10m	% SURVIVAL
DIMENSIONS	length breadth (1) breadth (2) diameter height (1) height (2) depth (1) depth (2)			
LAND USE	deciduous coniferous mixed parkland scrub moorland rough pasture improved pasture reverted pasture marsh peat bog other			
DESCRIPTION (brief)	CONDITION		NAME	
	ORIENT		DATE	
ASSOC. FEATURE/SITE	SAME AS			

PROJECT <small>name &amp; number</small>	MAP SHEET No.	AREA	NUMBER	
NGR	ELEVATION	TYPE	stone wall bank ditch track clearance other mod. fence	
TYPE EXAMPLE	poor average good v. good	VISIBILITY (m)	500+ 2-500 1-200 50-100 20-50 10-20 <10m	% SURVIVAL
DIMENSIONS	length breadth (1) breadth (2) diameter height (1) height (2) depth (1) depth (2)			
LAND USE	deciduous coniferous mixed parkland scrub moorland rough pasture improved pasture reverted pasture marsh peat bog other			
DESCRIPTION (brief)	CONDITION		NAME	
	ORIENT		DATE	
ASSOC. FEATURE/SITE	SAME AS			

PROJECT <small>name &amp; number</small>	MAP SHEET No.	AREA	NUMBER	
NGR	ELEVATION	TYPE	stone wall bank ditch track clearance other mod. fence	
TYPE EXAMPLE	poor average good v. good	VISIBILITY (m)	500+ 2-500 1-200 50-100 20-50 10-20 <10m	% SURVIVAL
DIMENSIONS	length breadth (1) breadth (2) diameter height (1) height (2) depth (1) depth (2)			
LAND USE	deciduous coniferous mixed parkland scrub moorland rough pasture improved pasture reverted pasture marsh peat bog other			
DESCRIPTION (brief)	CONDITION		NAME	
	ORIENT		DATE	
ASSOC. FEATURE/SITE	SAME AS			

PROJECT <small>name &amp; number</small>	MAP SHEET No.	AREA	NUMBER	
NGR	ELEVATION	TYPE	stone wall bank ditch track clearance other mod. fence	
TYPE EXAMPLE	poor average good v. good	VISIBILITY (m)	500+ 2-500 1-200 50-100 20-50 10-20 <10m	% SURVIVAL
DIMENSIONS	length breadth (1) breadth (2) diameter height (1) height (2) depth (1) depth (2)			
LAND USE	deciduous coniferous mixed parkland scrub moorland rough pasture improved pasture reverted pasture marsh peat bog other			
DESCRIPTION (brief)	CONDITION		NAME	
	ORIENT		DATE	

PROJECT	AREA	NUMBER
NGR	ALT.	SITE TYPE
TYPE INTERPRET	v.doubt doubt poss prob def	TYPE EXAMPLE poor average good v.good
TOPOGRAPHY	valley floor valley slope (top mid base) hill slope (top mid base) depression ridge rise other	
FORM	building-roofed building-ruined earthwork wall bank ditch feature other	
MATERIAL	stone earth mixed undetermined other	
DESCTYPE	spread mound hollow platform enclosure linear other	MANMADE v.doubt doubt poss prob def
VISIBILITY(m)	500+ 2-500 1-200 50-100 20-50 <20	CONDITION intact nr.intact damaged nr.destr
SIZE	SHAPE	ORIENT
CHRONOLOGY	early pre late pre/RB early med med late med mod under	CONFIDENCE high mod low
THREATS	put no. below relevant ones 1=slight 2=mod 3=severe	
animal erosion	animal burrowing afforestation building ploughing scrub vehicle erosion visitor erosion	
weathering	natural decay water drainage land improvement quarrying stone robbing other	
LAND USE	arable improved pasture rough grazing woodland/scrub forestry peat bog other	
ON-SITE VEGETATION	turf coarse grass rushes gorse heather bracken moss bilberry other	
THREAT RESPONSE	A (SAM) B (Reg) C (Loc) D (Min) E (Further info) O.S. Already Yes No	
FURTHER WORK	none detailed plan AP geophysics trial trench documentary environmental re-visit other	
AP REFs		
PHOTOS TAKEN	B/W Y/N CS Y/N	INITIALS DATE
DESCRIPTION/SKETCH		

#### **APPENDIX IV : TITHE SCHEDULE**

## The Dogellau Tithe Schedule

No.	Owner	Occupier	Field Name
71	Hon. Edwards	John Jones	Gwen graig
116	Mrs Anne Griffiths	Robert Griffith	Ty y bryn
117	Mrs Ann Griffith	Griffith Evans	Bwlchcoch
118	Mrs Ellen Edwards	Richard Roberts	Pandy y Gader
119	Mrs Ellen Edwards	Evan Richards	Bwlchcoch
121	Mrs Anne Edwards	Thomas Evan	Tyn y ffordfawr
122	Will. Anwyl Esq.	David Rees	Hafod y goes wen ucha
124	David Owen Esq.	W. David Owens	Pant y'r onnen
125	Griffiths Jones	Rees Davies	Tyddyndu
126	Griffith Howel Vaughan	Hugh Pugh	Coedcroes
127	Hugh Jones Esq.	Humphrey Morris	Brynmawr
128	Hugh Jones Esq.	Evan James	Esgeiriau
129	Mrs Ann Griffiths	Mrs Williams	Tan y f?edw
130	Mrs Eliz. Owens	Mary Davis	Tan y gader
131	Rev. Griffith Owen	Catherine Jones	Gilvachwydd
132	Hugh Jones Esq.	Catherine Ellis	Tyddynmawr
133	Hugh Jones Esq.	Hugh Pugh	Penrhyngwyn
134	Hugh Jones Esq.	Lewis Evans	Tyn y nant



## APPENDIX V : PLACENAMES IN THE AREA

**Place-names of interest in the survey area.**

*Gwen graig* - fair stone/crag  
*Ty y bryn* - hill of the house  
*Bwlchcoch* - red pass  
*Pandy y Gader* - fulling mill  
*Tyn y ffordfawr* - big road of the cottage/small farm  
*Hafod y goes wen ucha* - upper pleasant summer dwelling of the cross?  
*Pant y'r onnen* - valley?  
*Tyddyndu* - black small farm/cottage  
*Coedcroes* - cross wood  
*Brynmawr* - big hill  
*Esgeiriau* - esgair (ridge)  
*Tan y fedw* - below the birch trees  
*Tan y gader* - below the seat?  
*Gilvachwydd* - gilfach (small recess), gwydd (marsh)  
*Tyddynmawr* - big cottage/small farm  
*Penrhynwyn* - white promontory  
*Tyn y nant* - house by the valley containing a small stream  
*Cadair Idris* - seat of Idris

*'According to popular legend - he who sleeps in the chair of Idris on the summit of the mountain will be found the next morning, a corpse, a madman or a bard.'*

T.L. Peacock - 'The Romance of the Welsh Mountains'

