

SHIRE HALL, LLANGEFNI, SIR FÔN

Asesiad Desg Archeolegol/
Archaeological Desk-Based Assessment



Ymddiriedolaeth Archaeolegol Gwynedd
Gwynedd Archaeological Trust

SHIRE HALL, LLANGFNI, SIR FÔN

Asesiad Desg Archeolegol/ Archaeological Desk-Based Assessment

Yr Amgylchedd Hanesyddol yn Cofnodi Prif Gyfeirnod /
Historic Environment Record Event Primary Reference Number: 46634

Rhif Prosiect / Project No. G2781

Rhif Adroddiad / Report No. 1707

Wedi'i baratoi ar gyfer / Prepared for: Russell-Hughes Cyf

Ebrill/April 2023

Ysgrifenydd gan / Written by: Michael Sion Lynes




Delwedd clawr blaen / Front Cover image: Golygfa gyffredinol o Neuadd y Sir a'r ardal ddatblygu o'r de-ddwyrain (Cyfeirnod Archif G2781_002) /
General view of Shire Hall and development area from the southeast (Archive Reference G2781_002)

Cyhoeddwyd gan Ymddiriedolaeth Archaeolegol Gwynedd
Ymddiriedolaeth Archaeolegol Gwynedd
Craig Beuno, Ffordd y Garth,
Bangor, Gwynedd, LL57 2RT

Published by Gwynedd Archaeological Trust
Gwynedd Archaeological Trust
Craig Beuno, Garth Road,
Bangor, Gwynedd, LL57 2RT

Cadeiryddes/Chair - Yr Athro/David Elis-Williams MA(Oxon), MSc, CPFA
Prif Archaeolegydd/Chief Archaeologist - Andrew Davidson, B.A., MCIfA

Mae Ymddiriedolaeth Archaeolegol Gwynedd yn Gwmni Cyfyngedig (Ref Cof. 1180515) ac yn Elusen (Rhif Cof. 508849)
Gwynedd Archaeological Trust is both a Limited Company (Reg No. 1180515) and a Charity (reg No. 508849)

Approvals Table				
	Role	Printed Name	Signature	Date
Originated by	Document Author	Michael S Lynes		03/05/2023
Reviewed by	Document Reviewer	John Roberts		03/05/2023
Approved by	Principal Archaeologist	John Roberts		03/05/2023

Revision History			
Rev No.	Summary of Changes	Ref Section	Purpose of Issue
1	Additional discussion of sites PRN: 36150 and PRN: 2680	3.2.2 & 3.2.3	GAPS approval

CONTENTS

CRYNHODEB ANHECHNEGOL	1
NON-TECHNICAL SUMMARY	1
1 INTRODUCTION	1
2 METHODOLOGY	3
2.1 Introduction.....	3
2.2 Desktop Study.....	4
2.3 Field Survey.....	5
2.4 Data Management Plan.....	6
2.5 Selection Strategy.....	7
2.6 Gazetteer of Assets.....	8
3 RESULTS.....	11
3.1 Desk based assessment.....	11
3.1.1 Location and geological summary	11
3.1.2 Statutory and Non-Statutory Designations.....	12
3.1.1.1 Conservation Areas.....	12
3.1.1.2 Listed Buildings Grade II*	12
3.1.1.3 Listed Buildings Grade II	13
3.1.1.4 Non-Statutory Designated Assets.....	14
3.2 Historical and Archaeological Background.....	18
3.2.1 Prehistoric & Roman	18
3.2.2 Medieval.....	19
3.2.3 Post-Medieval	20
3.2.4 Previous Historical & Archaeological Work.....	22
3.2.5 Cartographic Evidence & Historic Land ownership.....	23
3.2.6 Artefact potential.....	24
3.2.7 Aerial Photographs and LiDAR.....	25
3.2.7.1 Aerial Photographs.....	25
3.2.7.2 LiDAR.....	26
3.3 Field Survey.....	27
3.4 Gazetteer of Assets.....	28
3.4.1 Introduction.....	28
3.4.2 Assessment Category.....	29

3.4.3	Gazetteer.....	30
4	CONCLUSION AND RECOMMENDATIONS.....	35
5	SOURCES CONSULTED	36
	APPENDIX I	38
	Gwynedd Archaeological Trust Written Scheme of Investigation.....	38
	APPENDIX II	39
	Gwynedd Archaeological Trust Photographic Metadata.....	39
	APPENDIX III.....	40
	Gwynedd Archaeological Trust Historic Environment Record Statutory and Non-Statutory Assets within a 500m Buffer.....	40
	APPENDIX IV.....	41
	Gwynedd Archaeological Trust Selection Strategy	41

Figures

Figure 01: Produced location plan. Source: Russell-Hughes Cyf (Drawing 2992:22:1); Scale: 1:1250@A3.

Figure 02: Produced site plan. Source: Russell-Hughes Cyf (Drawing 2992:22:3); Scale: 1:500@A2.

Figure 03: Location map showing 500m buffer zone, detailing all designated and non-designated assets surrounding the development area. Source: Gwynedd Archaeological Trust (Drawing DBA/02B); Scale: 1:5000@A3.

Figure 04: Reproduction of Llangefni Parish Tithe Map, published 1843. The general assessment area is highlighted in red. Not to scale (Source: NLW)

Figure 05: First Edition Ordnance Survey 1-inch to 25-mile County Series Map Sheet XVII.3, published in 1889. Scale: 1 to 7500@A4.

Figure 06: Second Edition Ordnance Survey 1-inch to 25-mile County Series Map Sheet XVII.3, published in 1900. Scale: 1 to 7500@A4.

Figure 07: Third Edition Ordnance Survey 1-inch to 25-mile County Series Map Sheet XVII.3, published in 1920. Scale: 1 to 7500@A4.

Figure 08: 1966 6626 OS66_104 081 (Welsh Government sourced arial photo)

Figure 09: 1m DTM composite dataset for SH4575 sourced from Lle Geo-Portal: Not to scale

Figure 10: 1958 arial photo of Llangefni showing study area. WSE/261

Plates

Plate 1: General view of southern elevation of council buildings (Shire Hall) (Asset 1) from the south - ; scale: 1x1m (archive reference: G2781_001).

Plate 2: General view of council buildings (Shire Hall), (Asset 1) from the southeast - ; scale: 1x1m (archive reference: G2557_002).

Plate 3: General view of rear of council buildings (Shire Hall), (Asset 1) from the east - ; scale: 1x1m (archive reference: G2781_003).

Plate 4: General view of rear of council buildings (Shire Hall), (Asset 1) from east-northeast. - ; scale: 1x1m (archive reference: G2781_004).

Plate 5: General view of rear (Police station carpark) courtyard from the south - ; scale: Not used (archive reference: G2781_005).

Plate 6: View of development area from the northeast showing grassed area - ; scale: 1x1m (archive reference: G2781_006).

Plate 7: Angled view of modern porch leading into the rear of council building (Shire Hall) (Asset 1) from the southeast - ; scale: 1x1m (archive reference: G2781_007).

Plate 8: Angled view of modern porch and extensions at rear of council building (Shire Hall) (Asset 1) from the southeast - ; scale: 1x1m (archive reference: G2781_008).

Plate 9: View of brick built recess at southern elevation of Shire Hall (Asset 1) (street light in shot) from the south - ; scale: 1x1m (archive reference: G2781_009).

Plate 10: View of blocked doorway at rear of Shire Hall (Asset 1) from the east- ; scale: 1x1m (archive reference: G2781_010).

Plate 11: Angled view of shire hall and development area (grassed) from the southwest - ; scale: 1x1m (archive reference: G2781_011).

Plate 12: General angled view of manhole covers within development area from the west-southwest - ; scale: 1x1m (archive reference: G2781_012).

Plate 13: General view showing south side of Shire Hall (Asset 1), the chapel (Asset 3) and court (Asset 4) from the carpark (South-southeast) - ; scale: Not used (archive reference: G2781_013).

Plate 14: General view of development area showing Shire Hall (Asset 1), court (Asset 4) and chapel (Asset 3) from the southeast - ; scale: 1x1m (archive reference: G2781_014).

Plate 15: Angled view of Shire Hall (Asset 1) and grass sward from the southwest - ; scale: Not used (archive reference: G2781_015).

Plate 16: View of south half of façade of Shire Hall (Asset 2: War Memorial included) - ; scale: Not used (archive reference: G2781_016).

Plate 17: View of northern half of façade of Shire Hall (Asset 2: War Memorial included) from the west-southwest - ; scale: Not used (archive reference: G2781_017).

Plate 18: View of Capel Smyrna (Asset 3) from the east - ; scale: Not used (archive reference: G2781_018).

Plate 19: Angled view of chapel and court house from the east (Asset 3 and 4) - ; scale: Not used (archive reference: G2781_019).

Plate 20: Slight angled view of court house (Asset 4) from the east-southeast - ; scale: Not used (archive reference: G2781_020).

Plate 21: View of war memorial (Asset 2) and front of shire hall (Asset 1) from the south - ; scale: Not used (archive reference: G2781_021).

Plate 22: Slightly angled view of Capel Moreia (Asset 5) from the west - ; scale: Not used (archive reference: G2781_022).

Plate 23: Slightly angled view of Capel Moreia (Asset 5) from the northwest - ; scale: Not used (archive reference: G2781_023).

Plate 24: General view of police carpark to rear of Shire Hall (Asset 1) showing development area (green) through gate from the north-northeast - ; scale: Not used (archive reference: G2781_024).

Plate 25: View of rear of Shire Hall (Asset 1), taken from the bridge over the Afon Cefni in the car park, showing the development area from the southeast - ; scale: Not used (archive reference: G2781_025).

CRYNHODEB ANHECHNEGOL

Comisiynwyd Adran Contractau Ymddiriedolaeth Archaeolegol Gwynedd gan Russell-Hughes Cyf. i paratoi asesiad archeolegol o ddesg yn Neuadd y Sir, Llangefni. Cynhaliwyd ymchwil archifol a thaith gerdded ar faes yr arolwg. Dangosodd yr arolwg desg ddatblygiad a chythrwfl sylweddol ar y safle datblygu arfaethedig ar ffurf cyfres o adeiladau hirsgwar a gafodd eu dymchwel yn ddiweddarach. Roedd ardal yr astudiaeth yn cynnwys ardal dywarchen wedi'i thirlunio i gefn Neuadd y Sir, gyda llawer o wasanaethau wedi'u nodi yn ei chroesi. Yn ogystal â'r gwasanaethau modern oedd yn bresennol, mae'n debygol y byddai'r ardal wedi'i thirlunio ar ôl dymchwel hen adeiladau.

NON-TECHNICAL SUMMARY

Gwynedd Archaeological Trust Contracts Section was commissioned by Russell-Hughes Cyf. to prepare an archaeological desk-based assessment at Shire Hall, Llangefni. Both archival research and a walkover was conducted on the survey area. The desk-based survey showed significant development and disturbance on the proposed development site in the form of a series of long rectangular buildings which were later demolished. The study area consisted of a landscaped turfed area to the rear of the Shire Hall, with many services noted crossing it. In addition to the modern services present, the area was likely landscaped post demolition of former buildings.

1 INTRODUCTION

Gwynedd Archaeological Trust Contracts Section (GAT) was commissioned by Russell-Hughes Cyf. to prepare an archaeological desk-based assessment at Shire Hall, Llangefni (NGR SH 45908 75525; postcode LL77 7ET; (Figure 01). The proposed development includes the erection of seven residential units at the rear of the Grade II listed building at Llangefni under planning reference FPL/2023/41 (Figure 02, 03, 04, 05). The planning application reference for this scheme is FPL/2023/41.

The assessment was undertaken on the 26th April 2023 and completed in accordance with the following guidance:

- Guidance for the Submission of Data to the Welsh Historic Environment Records (HERs) Version 2 (The Welsh Archaeological Trusts, 2022);
- Guidelines for digital archives (Royal Commission on Ancient and Historic Monuments of Wales, 2015);
- Management of Archaeological Projects (English Heritage, 1991);
- Management of Research Projects in the Historic Environment: The MoRPHE Project Managers' Guide (Historic England, 2015);
- Standard and Guidance for historic environment desk-based assessment (Chartered Institute for Archaeologists, 2020);
- Standard and Guidance for The Collection, Documentation, Conservation and Research of Archaeological Materials (Chartered Institute for Archaeologists, 2020); and
- Standard and Guidance for The Creation, Compilation, Transfer and Deposition of Archaeological Archives (Chartered Institute for Archaeologists, 2020).

The archaeological assessment was monitored by the Gwynedd Archaeological Planning Service and undertaken in accordance with a Written Scheme of Investigation ([Appendix I](#)). In line with the Gwynedd Historic Environment Record (HER) requirements, the HER was contacted at the onset of the project to ensure that any data arising was formatted in a manner suitable for accession to the HER under the guidance set out in *Guidance for the Submission of Data to the Welsh Historic Environment Records (HERs)* (The Welsh Archaeological Trusts, 2022). The HER was informed of the project start date, location, grid reference and estimated timescale; the project was assigned HER Enquiry Number

GATHER1772 and Event Primary Reference Number 46634. A bilingual event summary has been prepared for submission to the HER in accordance with their guidance.

Gwynedd Archaeological Trust is certified to ISO 9001:2015 and ISO 14001:2015 (Cert. No. 74180/B/0001/UK/En) and is a Registered Organisation with the Chartered Institute for Archaeologists.

2 METHODOLOGY

2.1 Introduction

This assessment comprised a desk-based study and field survey and the following:

- a detailed breakdown of the known archaeology in the vicinity of the site;
- an assessment of previous land use compiled from an analysis of historical maps, aerial photographs and other archive materials;
- a listing of the heritage-related planning constraints that may affect the site; and
- a ranking of the potential for archaeology of each of the archaeological periods to be found within the site.

2.2 Desktop Study

The desk-based assessment encompassed a 500m buffer zone (250m either side of the route) and was undertaken using the following resources:

1. The regional Historic Environment Register (HER) Gwynedd Archaeological Trust, Craig Beuno, Ffordd y Garth, Bangor, Gwynedd LL57 2RT) was examined for information concerning the assessment area as detailed in Figure 01. Examination of the core HER data was undertaken, including the 6-inch to 1-mile County Series Ordnance Survey maps (Anglesey Sheet XVII.3 Published: 1st edition 1889, 2nd edition 1900 and 3rd edition 1920) and secondary sources, including the following reports:
 - Davidson, A. & Roberts, R., RCAHMS Chapel Survey;
 - Davidson, A., 2002, The Medieval Mills of Anglesey: Archaeological Threat Related Assessment;
 - Evans, R., & Owen, K., 2018, Pen-yr-Orsedd, Llangefni Industrial Estate, Ynys Mon. Archaeological Watching Brief. Gwynedd Archaeological Trust Report 1425;
 - Huw Owen, D., 2012, The Chapels of Wales;
 - The Royal Commission on the Ancient and Historical Monuments of Wales, RC Buildings Records.
2. The National Monuments Record of Wales (Royal Commission on the Ancient and Historical Monuments of Wales, Plas Crug, Aberystwyth SY23 1NJ) and the online catalogue of the National Library of Wales (Penglais Rd, Aberystwyth SY23 3BU) were examined checked for any sites additional to the HER;
3. Aerial photographs from the National Monuments Record of Wales (Royal Commission on the Ancient and Historical Monuments of Wales, National Monuments Record of Wales, Plas Crug, Aberystwyth SY23 1NJ) were examined for potential features. This will include 1946 RAF and later vertical aerial photographs;
4. Archive data, including primary and secondary sources, historic maps and estate maps were examined at the regional archives. Archive data will included historic mapping such as the 1842 Llangefni Parish Tithe map and schedule; and
 - Light Detection and Ranging (LiDAR) data was examined from the Lle Geo-Portal at <http://lle.gov.wales/home> for information on potential surface features using 1m digital terrain modelling for are SH71.

2.3 Field Survey

A field survey was undertaken on 12/01/2023 and incorporated the proposed hydropower scheme area as defined in Figure 02. Known assets were mapped and located in advance and the aim of the field survey was to visit and record these features and to identify any additional features; information was recorded on GAT pro-formas and a photographic record maintained. Photographic images were taken in RAW format using a digital SLR set to maximum resolution (Nikon D3100; resolution: 4,608 × 3,072 [14.2 effective megapixels]) and archived in TIFF format; a total of fifteen images were taken (G2781_001 to G2781_025; cf. [Appendix II](#)).

2.4 Data Management Plan

Archiving was completed based on the following task list:

- Pro-formas: all cross referenced and scanned for digital archiving; and
- Photographic Metadata: cross-referenced with all pro-formas and completed in Microsoft Excel.

This data was then used as the basis for the physical and digital dataset archives; information from these were then used to compile the project report. The physical archive is stored in a designated project folder and the location confirmed in the Trust project database; the digital dataset is stored on a dedicated Trust server, with the location confirmed in the Trust project database via a specific hyperlink. There is no de-selected digital data. The following dissemination and archiving of the report and digital dataset has been applied:

- A digital report has been provided to the client and Gwynedd Archaeological Planning Service (GAPS) (draft report then final report);
- A digital report has been provided to the regional HER, along with a digital dataset comprising an Event Primary Reference Number (PRN) summary. The report and dataset will be submitted in accordance with the required standards set out in Guidance for the Submission of Data to the Welsh Historic Environment Records (HERs) (Version 2); and
- A digital report and digital archive dataset have been prepared for submission to the RCAHMW (final report only), in accordance with the RCAHMW Guidelines for Digital Archives Version 1. The dataset has been prepared in the format required by RCAHMW and includes:
 - Photographic metadata (Microsoft Access);
 - Photographic archive (TIFF format);
 - Project Information form (Excel);
 - File Information form (Excel) – Microsoft Word report text final;
 - File Information form (Excel) – Photographic metadata (general);
 - File Information form (Excel) – Adobe PDF report final; and
 - File Information form (Excel) - Photographic metadata (detail).

2.5 Selection Strategy

As defined in *Standard and guidance for the creation, compilation, transfer and deposition of archaeological archives* (Chartered Institute for Archaeologists, 2020) section 3.3.1, a project specific selection strategy and data management plan should be prepared. In support of this, the Chartered Institute for Archaeologist (CIfA), have stated that it is “widely accepted that not all the records and materials collected or created during the course of an Archaeological Project require preservation in perpetuity. These records and materials constitute the Working Project Archive which will be subject to Selection, in order to establish what will be retained for long-term curation”. The aim of selection is to ensure that all the elements retained from the Working Project Archive for inclusion in the Archaeological Archive are appropriate to establish the significance of the project and support “future research, outreach, engagement, display and learning activities”. Selection should be “focused on selecting what is to be retained to support these future needs, rather than deciding what can be dispersed” and can be qualified by a selection strategy, which details the project-specific selection process, agreed by all parties (including GAPS, client and/or landowner), which will be applied to a Working Project Archive prior to its transfer into curatorial care as the Archaeological Archive.

The selection strategy will be confirmed in the assessment report and will take into account:

- The aims and objectives of the project.
- The brief and/or Written Scheme of Investigation (WSI).
- The Collecting Institution’s collection policy and/or deposition guidelines.
- Local and regional research frameworks.
- Relevant thematic or period specific research frameworks.
- The project’s Data Management Plan (DMP).
- Internal recording and reporting policies.
- Material-specific guidance documents.

The finalised selection strategy is included as [Appendix IV](#).

2.6 Gazetteer of Assets

A gazetteer has been compiled for any existing and newly identified assets, based on information sourced from the desk-based assessment and field survey.

The gazetteer has been prepared in the following format:

Asset Number	
Site name	
PRN number	
Grid reference	
Period	
Site type	
Designation	
Assessment category	
Description	
Impact	
Recommendation	

The following categories have been used to define the assessment category of the archaeological asset:

Category A - Sites of National Importance.

Scheduled Monuments, Listed Buildings of grade II* and above, as well as those that would meet the requirements for scheduling (ancient monuments) or listing (buildings) or both. Sites that are scheduled or listed have legal protection, and it is recommended that all Category A sites remain preserved and protected in situ.

Category B - Sites of regional or county importance.

Grade II listed buildings and sites which would not fulfil the criteria for scheduling or listing, but which are nevertheless of particular importance within the region. Preservation in situ is the preferred option for Category B sites, but if damage or destruction cannot be avoided, appropriate detailed recording might be an acceptable alternative.

Category C - Sites of district or local importance.

Sites which are not of sufficient importance to justify a recommendation for preservation if threatened. Category C sites nevertheless merit adequate recording in advance of damage or destruction.

Category D - Minor and damaged sites.

Sites that are of minor importance or are so badly damaged that too little remains to justify their inclusion in a higher category. For Category D sites, rapid recording, either in advance of or during destruction, should be sufficient.

Category E - Sites needing further investigation.

Sites, the importance of which is as yet undetermined and which will require further work before they can be allocated to categories A - D are temporarily placed in this category, with specific recommendations for further evaluation.

The impact of the proposed works on any asset has been identified using the following impact criteria:

None:

There is no construction impact on this asset.

Slight:

This has generally been used where the impact is marginal and would not by the nature of the site cause irreversible damage to the remainder of the asset, e.g. part of a trackway or field bank.

Unlikely:

This category indicates sites that fall within the band of interest but are unlikely to be directly affected. This includes sites such as standing and occupied buildings at the margins of the band of interest.

Likely:

Sites towards the edges of the study area, which may not be directly affected, but are likely to be damaged in some way by the construction activity.

Significant:

The partial removal of an asset affecting its overall integrity. Assets falling into this category may be linear features such as roads or tramways where the removal of part of the feature could make overall interpretation problematic.

Considerable:

The total removal of an asset or its partial removal which would effectively destroy the remainder of the site.

Unknown:

This is used when the location of the asset is unknown, but thought to be in the vicinity of the proposed works.

3 RESULTS

3.1 Desk based assessment

3.1.1 Location and geological summary

The proposed scheme lies within the market town of Llangefni in the parish of Llangefni Community and unitary authority of Anglesey. Llangefni is characterised by an urban setting set next to the Afon Cefni. Llangefni is a commercial and farming town which once held the largest cattle market on Anglesey at the former site which Asda supermarket now stands.

The bedrock geology consists of Gwna Group - Schist. Metamorphic bedrock formed between 635 and 508 million years ago during the Ediacaran and Cambrian periods. The Superficial deposits are Tidal Flat Deposits - Clay, silt and sand. Sedimentary superficial deposit formed between 11.8 thousand years ago and the present during the Quaternary period. (Source: British Geological Survey; [BGS Geology Viewer \(BETA\)](#)).

Soils consist of freely draining slightly acid but base rich soil, loamy (Source: Soilsclapes; <https://www.landis.org.uk/soilsclapes/>).

3.1.2 Statutory and Non-Statutory Designations

There is one statutory designated asset that is in close proximity of the proposed development site (Asset 1 Shire Hall), and the site is part of the wider agricultural, industrial and settlement multiperiod landscape that includes prehistoric, Roman and post-medieval activity. There are sixty-two statutory and non-statutory designated assets within the assessment area that comprises the development site and a 500m buffer (cf. Figure 03 and Appendix III). Sites are identified by their Primary Reference Number (PRN) if records are kept in the Gwynedd Historic Environment Record (HER) or their National Primary Reference Number (NPRN) if the record is from the National Monuments Record (NMR) or Coflein. PRNs and NPRNs are unique record identifiers in the relevant record.

The site is located close to the Grade II* Listed Building Shire Hall) (LB 5752; GAT HER PRN 11620; Figure 03) constructed in 1899 by O.M.Roberts & Son (Porthmadog) in Jacobean style with classical detail.

The known statutory and non-statutory designated assets are detailed on (Figure 03), and include:

3.1.1.1 Conservation Areas

There are 2 Conservation Areas within the 500m assessment buffer zone:

- Asset No 14, PRN 62452, NGR SH4580175712: Llangefni, Conservation Area, Multiperiod Landscape, Conservation Area

3.1.1.2 Listed Buildings Grade II*

There is 1 Grade II* Listed Building within the 500m assessment buffer zone:

- Asset No 1, PRN 11620, NPRN 23149, NGR SH4591575487: Shire Hall, Llangefni, post-medieval Shire Hall, Listed Building 5752

3.1.1.3 Listed Buildings Grade II

There are 13 Grade II Listed Buildings within the 500m assessment buffer zone:

- Asset No 1, PRN 11620, NPRN 23149, NGR SH4591575487: Shire Hall, Llangefni, Post-medieval Shire Hall, Listed Building 5752.
- Asset No 2, PRN 66769, NPRN 424338, NGR SH4589375517: War Memorial, Llangefni, Post-medieval War Memorial, Listed Building 20551.
- Asset No 3, PRN 7778, NPRN 8778, NGR SH4586275499: Capel Smyrna, Llangefni, Post-medieval Chapel, Listed Building 5754
- Asset No 4, PRN 11608, NPRN 23133, NGR SH4587075523: County Court, Llangefni, post-medieval Building, Listed Building 5753.
- Asset No 7, PRN 61462, NPRN 308602, NGR SH4591575583: Doldir House, Llangefni, Modern House; Surgery, Listed Building 18807.
- Asset No 9, PRN 11623, NPRN 23152, NGR SH4595075650: Town Hall, Llangefni, Post-medieval Building, Listed Building 5738.
- Asset No 10, PRN 11018, NPRN 15601, NGR SH4592075670: Bull Hotel, Pen-y-bont Inn, Llangefni, Post-medieval Building, Listed Building 5755.
- Asset No 11, PRN 12657, NPRN 32548, NGR SH4594675684: Town Clock, Llangefni, Post-medieval Clock Tower, Listed Building 5739.
- Asset No 13, PRN 66766, NPRN 406103, NGR SH4592375703: The Market Hotel, Post-medieval Hotel, Listed Building 20549.
- Asset No 26, PRN 66767, NGR SH4585075924: Gates and arch to Church of St. Cyngar, Post-medieval Gate, Listed Building 20548.
- Asset No 29, PRN 7010, NPRN 201, NGR SH4580375925: St Cyngar's, Llangefni Parish Church, Llangefni, Medieval; post-medieval Church, Listed Building 5410.
- Asset No 40, PRN 66768, NPRN 413807, NGR SH4562775825: Former National School and Schoolhouse, Llangefni, Post-medieval School, Listed Building 20550
- Asset No 43, PRN 71372, NPRN 419414, NGR SH4552275823: County School War Memorial, Llangefni, Modern War Memorial, Listed Building 87801

3.1.1.4 Non-Statutory Designated Assets

There are 47 non-statutory designated assets within the 500m assessment buffer zone:

- Asset No 6, PRN 36150, NPRN 407847, NGR SH4599275575: Melin Llangefni, Site of, Llangefni, Post-medieval corn mill
- Asset No 8, PRN 8115, NPRN 8782, NGR SH46057563: Lon y Felin Chapel, Llangefni, Post-medieval CHAPEL
- Asset No 12, NPRN 414211, NGR SH45937569: LLANGEFNI, Multiperiod TOWN,
- Asset No 15, PRN 17843, NGR SH4598575689: Roman Road, Proposed, Tal y Foel to Holyhead, Roman ROAD
- Asset No 16, NPRN 416926, NGR SH4603175692: ARCADIA CINEMA HALL, LLANGEFNI, 20th Century CINEMA,
- Asset No 17, PRN 8114, NPRN 11837, NGR SH46137568: Capel Ebenezer, Bridge Street, Llangefni, Post-Medieval CHAPEL,
- Asset No 18, PRN 8116, NPRN 11839, NGR SH46167586: Mortuary Chapel, Llangefni, POST MEDIEVAL MORTUARY CHAPEL
- Asset No 19, NPRN 419108, NGR SH4634075617: FORMER BRITISH SCHOOL, BRIDGE STREET, LLANGEFNI, 19th Century SCHOOL,
- Asset No 20, NPRN 8781, NGR SH4639875564: HEN CAPEL MOREIA, LLANGEFNI, Post Medieval CHAPEL,
- Asset No 21, PRN 2669, NGR SH46387576: Stone Axe, Findspot, Llangefni, PREHISTORIC FINDSPOT
- Asset No 22, PRN 7085, NGR SH459758: Flint Findspot, Ynys Cefni, PREHISTORIC FINDSPOT
- Asset No 23, PRN 7780, NPRN 8780, NGR SH45837582: Penuel, Llangefni, POST MEDIEVAL NONCONFORMIST CHAPEL
- Asset No 24, PRN 8113, NGR SH45847583: Capel, Llangefni, POST MEDIEVAL NONCONFORMIST CHAPEL
- Asset No 25, PRN 2684, NPRN 96605, NGR SH46007602: Plas Llangefni (C16th House), Site of, Llangefni, POST MEDIEVAL HOUSE

- Asset No 27, PRN 93891, NGR SH4583875900: Buildings, Site of, South of St. Cyngars, POST MEDIEVAL BUILDING
- Asset No 28, PRN 2673, NGR SH45817592: Inscribed Stone, Llangefni Church, EARLY MEDIEVAL INSCRIBED STONE
- Asset No 30, PRN 2672, NGR SH4580375925: Church, Site of, Llangefni, MEDIEVAL CHURCH
- Asset No 31, PRN 56050, NPRN 265427, NGR SH4576175928: Rectory, St Cyngar's Church, POST MEDIEVAL VICARAGE
- Asset No 32, PRN 26018, NGR SH45727596: Structure, Possible, North-West of St. Cyngar's Church, UNKNOWN ENCLOSURE; STRUCTURE
- Asset No 33, PRN 26017, NGR SH45697594: Building, North-West of St. Cyngar's Church, UNKNOWN BUILDING
- Asset No 34, PRN 32077, NGR SH45747588: Ffynnon Cyngar, Llangefni, UNKNOWN HOLY WELL
- Asset No 35, PRN 56049, NGR SH4569175856: Weir, Llyn Bach, SW of St Cyngar's Chrch, POST MEDIEVAL WEIR
- Asset No 36, PRN 26022, NGR SH45697585: Weir, South-West of St. Cyngar's Church, UNKNOWN WEIR
- Asset No 37, PRN 26019, NGR SH45667587: Footbridge, South-West of St. Cyngar's Church, UNKNOWN FOOTBRIDGE
- Asset No 38, PRN 93897, NGR SH4565175881: Winding Pillar, Llangefni, POST MEDIEVAL GATE POST
- Asset No 39, PRN 26020, NGR SH45587591: Weir, East of St. Cyngar's Church, UNKNOWN WEIR
- Asset No 41, PRN 26023, NGR SH45697581: Cattle Pens, South-West of St. Cyngar's Church, UNKNOWN PEN
- Asset No 42, PRN 93894, NGR SH4568475784: Train Station, Former, Llangefni, POST MEDIEVAL RAILWAY STATION
- Asset No 44, NPRN 417687, NGR SH4550475794: LLANGEFNI FORMER INTERMEDIATE SCHOOL, 20th Century SCHOOL

- Asset No 45, PRN 76591, NGR SH4572075334: Farm building, Fron, POST MEDIEVAL FARM BUILDING
- Asset No 46, PRN 76590, NGR SH4572675333: Farm building, Fron, POST MEDIEVAL FARM BUILDING
- Asset No 47, PRN 36151, NPRN 265370, NGR SH4572875317: Y Fron House and Garden, Llangefni, POST MEDIEVAL HOUSE
- Asset No 48, PRN 2680, NGR SH45657531: Cist Burials, Possible Site of, Llangefni, EARLY MEDIEVAL CIST GRAVE CEMETERY
- Asset No 49, PRN 76589, NGR SH4559775290: Farm building, Fron, POST MEDIEVAL FARM BUILDING
- Asset No 50, PRN 76588, NGR SH4559375279: Farm building, Fron, POST MEDIEVAL FARM BUILDING
- Asset No 51, PRN 76587, NGR SH4558875271: Farm building, Fron, POST MEDIEVAL FARM BUILDING
- Asset No 52, PRN 30905, NGR SH45597526: Outbuildings, Y Fron, Llangefni, POST MEDIEVAL FARMSTEAD; OUTBUILDING
- Asset No 53, PRN 76586, NGR SH4560075257: Farm building, Fron, POST MEDIEVAL FARM BUILDING
- Asset No 54, PRN 76585, NGR SH4560975256: Farm building, Fron, POST MEDIEVAL FARM BUILDING
- Asset No 55, PRN 76584, NGR SH4561575256: Farm building, Fron, POST MEDIEVAL FARM BUILDING
- Asset No 56, PRN 76583, NGR SH4561475252: Farm building, Fron, POST MEDIEVAL FARM BUILDING
- Asset No 57, PRN 76581, NGR SH4563575251: Farm building, Fron, POST MEDIEVAL FARM BUILDING
- Asset No 58, PRN 30873, NPRN 420899, NGR SH4563175247: Melin Fron, Llangefni, MEDIEVAL WATERMILL
- Asset No 59, PRN 61461, NPRN 265114, NGR SH4573575252: Bryn-arfon House and Garden, Llangefni, POST MEDIEVAL HOUSE

- Asset No 60, PRN 61460, NPRN 265374, NGR SH4574175201: Glanaber House and Garden, Llangefni, POST MEDIEVAL HOUSE
- Asset No 61, PRN 32799, NGR SH45657516: Archaeological Features, Hedd yr Ynys, Llangefni, ROMAN; UNKNOWN ARCHAEOLOGICAL FEATURE; SETTLEMENT
- Asset No 62, PRN 69893, NGR SH4614675239: Drain, Pen-yr-Orsedd, POST MEDIEVAL DRAIN

3.2 Historical and Archaeological Background

3.2.1 Prehistoric & Roman

A polished stone axe (PRN 2669; SH46387576) was found 535m north-east of the study area (Asset 21). The polished stone axe is 12ins x 3 3/4ins and was found during excavation for foundations of the new Sanatorium at Llangefni. A prehistoric flint find spot (PRN 7085) was discovered at (SH459758) 310 metres to the north of the development site (Asset 22).

The Roman activity within the town of Llangefni includes the Roman road proposed by W. Wyn Williams Junior (1860, 186-188) (Asset 15). This runs along the W side of Anglesey with a detour around Malltraeth marsh. The route has been digitised in outline form (PRN 17843; SH4598575689). At Hedd yr Ynys, Llangefni a small number of Roman objects were recovered including a trumpet brooch and a 3rd century coin and this Roman activity was supported by a small number of Roman pot sherds (Kenney 2018).

3.2.2 *Medieval*

When a boundary hedge was demolished between Glan Hwfa farm and Fron in about 1829, southwest of the study area, about 30 graves were found comprising stone cists, some covered over and containing human bones (Asset No 48, PRN 2680, NGR SH45657531). In addition 'there were also detached parts of graves containing fragments of human bones of great antiquity' (Gomme 1887, 401). These graves are of an unknown date, but this type of grave usually dates from the 5th to 11th centuries AD, and they can be assumed to be of an early medieval date. The find was also noted by Angharad Llwyd, who in a quite fanciful interpretation in 1833, claimed forty skeletons were found, and that these had been, 'hastily interred', and in an adjoining field a 'great number of human bones scattered in every direction' (Llwyd 2007, 134). The cemetery was not found through a geophysical investigation of the area in 2002, or GATs investigations at Hedd yr Ynys in 2016 (Kenney 2018), so its exact location remains a mystery.

The study area lies within the medieval parish of Llangefni and the cantref of Rhosyr and commote of Menai (Carr 1982). St Cyngar's medieval church at Llangefni was rebuilt in 1824, but its site lies 460m north-northwest of the study area (PRN 2672, LB Grade II Ref: 5410; SH45807592). An earlier church (PRN 2672; SH4580375925) was located to the east of the present church and was demolished in 1824, however, the form and date of the medieval church is not known, and no plans or descriptions have been found (Davidson 1998). Not within the study area but located within the area of Llangefni is the Tregarnedd moat (PRN 2727) (SH 46867464). A homestead moat southeast of Llangefni on the edge of Malltraeth marsh, enclosing an area of about 100m. The northwest and southwest sides survive in a fair condition, the others significantly destroyed. In places the single bank inside the ditch survives to a height of about 2m above the inside area. Some of the site is covered by 19th century farm buildings. It is the only moated site known on Anglesey (Evans, 2008).

3.2.3 *Post-Medieval*

The post medieval town of Llangefni grew into a large market town as is shown from the advancement from the 1844 Llangefni Parish Tithe Map to the 1st, 2nd and 3rd Ordnance survey maps (Figures 04, 05, 06, 07).

A post medieval corn mill was located immediately to the northeast of the study area on the western side of Mill Street, and after which the street was named (Asset No 6, PRN 36150, NPRN 407847, NGR SH4599275575). It was a large, complex building, with the oldest part being a two-storey stone building with cellar, with a wheel pit on the west gable which could have accommodated a wheel 4.25m in diameter (Davidson 2002). It was probably originally at least 18th century in date. The interior was in a ruinous state in 1975, but sufficient remained of a raised wooden Hurst frame to show that three pairs of stones had been set in line inside this gable (Crompton 2008). An early 20th century extension on the west side bridged the tail race. Traces of the stone-lined water leat, 2.2m wide and passing under main road, were still visible. Water was diverted from the Afon Cefni by a weir at SH4569275860, to enhance a tributary stream flowing from the north (Bowen, 2013). In 1975 this mill, close to the centre of the town, was much altered but still standing. However it was decayed and awaiting demolition, which has since taken place. The site is now part of the approaches and car parking for the County Council offices.

The development site started as part of a large open field which was later split and developed on the eastern side of the main road into Llangefni from the south (Figures 04, 05, 06). In addition to Shire Hall (PRN 11620), multiple chapels appear within the town, including Capel Smyrna (Asset 3) (PRN 7778) (Plates 13,14,18 and 19) located across the road to the development site at (SH 4586275499). Smyrna Independent Chapel was built in 1844, rebuilt in 1870 and again in 1903. The present chapel, dated 1903, is built in the Classical style with a gable-entry plan, triple window and great arch. Smyrna is now Grade 2 Listed as a well-preserved early twentieth century chapel (Davidson, A. & Roberts, R., 1994). A second chapel, Capel Moreia (Asset 5) (Plate 22 and 23) is located at (SH 4594075550) next door to Shire Hall to the north. The chapel built by *R & J Williams Ltd.* Bangor and opened in 1898. Renovations to the chapel took place in the 1920s and 1980s., and it is Listed Grade II. In addition to the chapels, situated to the west of the development site and next door to Capel Smyrna is the county court (Asset 4) (PRN 11608; SH 4587075523) built circa 1860 in an Italianate style, a single storey, 5 bay building (Plates 13,14,19 and 20). Asset 2, a war memorial was erected in 1920 to honour the memory of those who fell during the first world war and is located at the front of Shire Hall (SH4589375517) next to the main road (Plate 16,17 and 21). In addition, situated at (SH4563175247) 381 metres southwest of the

development is Melin Fron (The mill on the hill) (PRN 30873; SH4563175247). It appears likely that the mill dates from between 1851 and 1861 and was primarily a farm mill i.e. not a commercial operation. Though there is a reference to it being used to grind oats for horses, there is now no evidence that it was used to drive millstones. The mill was formerly turned by water from a mill pond immediately to the NW. The water wheel partly survives in a pit on the NE facing wall of the mill. It ran on an iron axle, which survives, and was made up of wooden arms, which have largely rotted away, and iron shrouds which survive. Power was transferred from the mill by cast-iron rim gearing which survives, attached to two shrouds on the SW side. The mill building is stone built and slate roofed. It is built on two floors, the lower accessed by a flight of stone steps, the upper from ground level, there is now no machinery in this building. On the NE side of the wheel pit is a small stone structure, partly roofed, in which there is evidence for an under-floor belt drive from the wheel axle. This structure houses a spindle on which there is a trace of a take-off for the belt drive, a cast iron flywheel and part of a dog clutch. The structure itself has a small grate built into the wall and it is likely that it housed a butter churn (Gwyn, 2002).

From 1842 onwards, the town grew along the Afon Cefni with multiple buildings replacing previous field systems running north and terminating at the Bull Hotel/Town Hall. A full list of post-medieval assets can be found in [Appendix III](#).

3.2.4 Previous Historical & Archaeological Work

The assessment area is located within a known area of Prehistoric, Roman, Medieval and later archaeological activity and is part of a wider historic landscape. Extensive archaeological fieldwork has been completed to the northeast as part of the Llangefni Link Road as well as within the Parc Bryn Cefni Industrial Park to the southeast (GAT Projects G1723, G2063, G2024, G2207, G2461 and G2555). In Addition, located to the northeast of the site C.1.4km, Brython Archaeology identified 45 early medieval graves during topsoil stripping for the construction of section 1 of the Llangefni Link Road, in 2016 (Brython Archaeology Document Number B1604.03 DRAFT).

3.2.5 Cartographic Evidence & Historic Land ownership

Earlier estate maps of the area could exist as part of the Buckley Estate, however, as the Bangor archives is currently closed, access to research was unavailable. The 1844 Llangefni Parish Tithe Map shows the field layout has been split up from a large open field into smaller parcels of land on the eastern side of the road compared to the 1st edition Ordnance survey map (Figures 04 and 05). The land detailed on the Tithe Map was owned by Sir Richard Bulkeley of the Buckley Estate, plot No.94, occupied by John Mallan with the field name noted as Rhosdolfeiriog. The field was 62 acres 3 roods and 5 perches in size, with most of the land present on the adjacent side of the main road leading into Llangefni from the south. The 2nd edition Ordnance Survey 25inch to 1 mile county series map shows that the land has been split to a smaller parcel of triangular shaped land to which the Shire Hall currently stands (Figure 06). From the second and third Ordnance Survey 25inch to 1 mile county series edition, Shire Hall is present along with Moriha Methodist church next to it to the north (Figure 06 and 07). Furthermore, a large carpark was constructed next to Shire Hall on the southern side taking up a large portion of the land.

3.2.6 Artefact potential

The proximity of the development site has been highly landscaped along with being previously disturbed by non-extant buildings covering the area. In addition, the presence of modern services which include drainage manholes, electrical and a single streetlight were noted on the walkover (Plates 6,12 and 11). However, although the chances of artefact potential are low, some surviving historical aspects of the previous use of the site could still exist beneath the existing landscaping.

3.2.7 *Aerial Photographs and LiDAR*

3.2.7.1 Aerial Photographs

A total of nine aerial photographs were sourced from the Welsh Government, covering a fifty-four year period between 1945 and 1999, as follows:

- 1945 4534 RAF106GUK_655 3113
- 1958 5806 F21 0009
- 1960 6004 58RAF3579 F21 0079
- 1966 6626 OS66_104 081 (Figure 08)
- 1971 7168 OS 71_163 295
- 1982 CUCAP RC8_ES 073
- 1990 9030 ADAS_474 076
- 1992 9205 ADAS 555 086
- 1999 WDA F27_28A

The post war RAF aerial photographs from 1966 clearly shows a series of rectangular buildings extending outwards from the current Shire Hall southern elevation where the current carpark is now situated (Figure 08). In total, there were four narrow buildings and possibly interconnected by passageways from building to building. The buildings are still present on the recent 1999 Welsh Development Agency, however, demolished by 2007 with the area landscaped and the creation of a carpark put into its place (Historic Planning Reference: 34LPA885A/LB/CC).

3.2.7.2 LiDAR

Light Detection and Ranging (LiDAR) data was examined from the Lle Geo-Portal at <http://lle.gov.wales/home> for information on potential surface features using digital terrain modelling (DTM) and digital surface modelling (DSM).

The 1m DTM composite dataset for SH4575 was examined (cf. Figure 09) but no additional sub-surface features were identifiable.

3.3 Field Survey

The field survey was undertaken on the 26th of April 2023 and incorporated the proposed development scheme area as defined in (Figure 01); a total of twenty-five images were taken (G2781_001 to G2781_025; cf. [Appendix II](#); Plates 01 to 25). The entire length of the scheme was walked in sunny and dry conditions.

The development area is a small 'L' shaped patch of green sward to the south of the Shire Hall building (Plates 6,11,13,14,15,24 and 25). It has two manhole covers a tall light lamp post and a 11kva overhead cable suspended on poles which crossed the eastern part of the site suggesting multiple underground services present within the area (Plate 12). There is also significant evidence of alterations and blocking of doorways on the southern elevation of the Shire Hall building (Plates 9 and 10). These suggest substantial alterations and demolitions and includes a late 20th century new porch (Plates 7 and 8). An area of brick forms an alcove, which probably formed part of an entrance down into the current demolished buildings with seps included (Plate 9). The main construction of the building is of a snecked limestone, with scars noted as forming part of former buildings (Plate 1,2,3 and 4). A 1950s oblique aerial photo (Figure 10) present at Anglesey Archives indicates that this area was built up at that time, but the map evidence shows fields up until the 3rd edition Ordnance Survey Map of 1914. The patch of land was therefore clearly developed between the wars (1918-1939) having formerly been fields, with the aerial photographs suggesting that there was significant development from the late 1950s into the 1960s.

The Afon Cefni flows at the edge of the green, now tree lined but these are not present on the historic RAF aerial photos. The river flows from north to south and is within a steep cut from the rear area at the rear of the Shire Hall development area. The green area is also crossed by two gravel footpaths (Plates 11 and 12). In addition, the rear of Shire Hall is in part made up of concrete serving as the former carpark of the Llangefni police station and runs up to the riverbank (Plate 5)

3.4 Gazetteer of Assets

3.4.1 Introduction

All recommendations are based on the current understanding of the scheme proposals and their impact on known or suspected assets and may have to be revised if information about the scheme impacts change. In the event of alterations to the scheme, the recommendations might have to be revisited. A 'C' after the grid reference indicates the central point of a larger feature, and 'A' after the reference indicates the central point of a wider group of features.

3.4.2 Assessment Category

As stated in [para. 2.4](#), the sites recorded in the archaeological assessment have been divided into five categories (A to E), based on national (Category A), regional (Category B) or district/local importance (Category C), or whether they are minor sites (Category D) or sites needing further investigation (Category E).

3.4.3 Gazetteer

Asset Number	1
Site name	Shire Hall, Llangefni
PRN/NPRN number	11620 / 23149
Grid reference	SH4591575487
Period	Post-medieval
Site type	Structure
Statutory Designation	Listed Building 5752
Assessment category	Category B
Description	Built in 1899 by O.M.Roberts & Son (Porthmadog). Basically, Jacobean style with classical detail. (RCAHMW, Undated)
Impact	Slight due to parking area proposed on plans running up to rear of Shire Hall building.
Recommendation	Building recording in advance of any alterations to the building itself.

Asset Number	2
Site name	War Memorial, Llangefni
PRN/NPRN number	66769 / 424338
Grid reference	SH4589375517
Period	Post-medieval
Site type	Commemorative structure (Memorial)
Statutory Designation	Grade II Listed 20551
Assessment category	B
Description	A war memorial built in the 1920s to commemorate the men of the parish who fell in the First World War.
Impact	None
Recommendation	Avoidance

Asset Number	3
Site name	Capel Smyrna, Llangefni
PRN/NPRN number	7778 / 8778
Grid reference	SH4586275499
Period	Post-medieval
Site type	Chapel
Statutory Designation	Grade II Listed 5754
Assessment category	B
Description	Smyrna Independent Chapel was built in 1844, rebuilt in 1870 and again in 1903. The present chapel, dated 1903, is built in the Classical style with a gable-entry plan, triple window, and great arch. Smyrna is now Grade 2 Listed as a well-preserved early twentieth century chapel.
Impact	None
Recommendation	None

Asset Number	4
Site name	County Court, Llangefni
PRN/NPRN number	11608 / 23133
Grid reference	SH4587075523
Period	Post-medieval
Site type	Structure
Statutory Designation	Grade II Listed 5753
Assessment category	B
Description	Circa 1860. Italianate. Single storey, 5 bay forebuilding. (RCAHMW, Undated).
Impact	None
Recommendation	None

Asset Number	5
Site name	Capel Moreia, Llangefni
PRN/NPRN number	7783 / 8783
Grid reference	SH4594075550
Period	Post-medieval
Site type	Structure
Statutory Designation	Grade II* Listed 5751
Assessment category	A
Description	Chapel built by R & J Williams Ltd. Bangor and opened in 1898. Renovations took place in the 1920s and 1980s. Listed Grade II*. (Huw Owen, 2012)
Impact	None
Recommendation	None

4 CONCLUSION AND RECOMMENDATIONS

Gwynedd Archaeological Trust Contracts Section was commissioned by Russell-Hughes Cyf. to prepare an archaeological desk-based assessment at Shire Hall, Llangefni as part of a proposed residential development scheme. The scheme is located at the rear southern side of Shire Hall and next to the bank of the Afon Cefni.

The assessment identified sixty-two statutory and non-statutory designated assets within the 500m buffer zone, however no certain evidence has been identified within the development area apart from Shire Hall itself (Asset 1). Examining map regression identified the site as being previously developed on by former buildings which have been recently demolished.

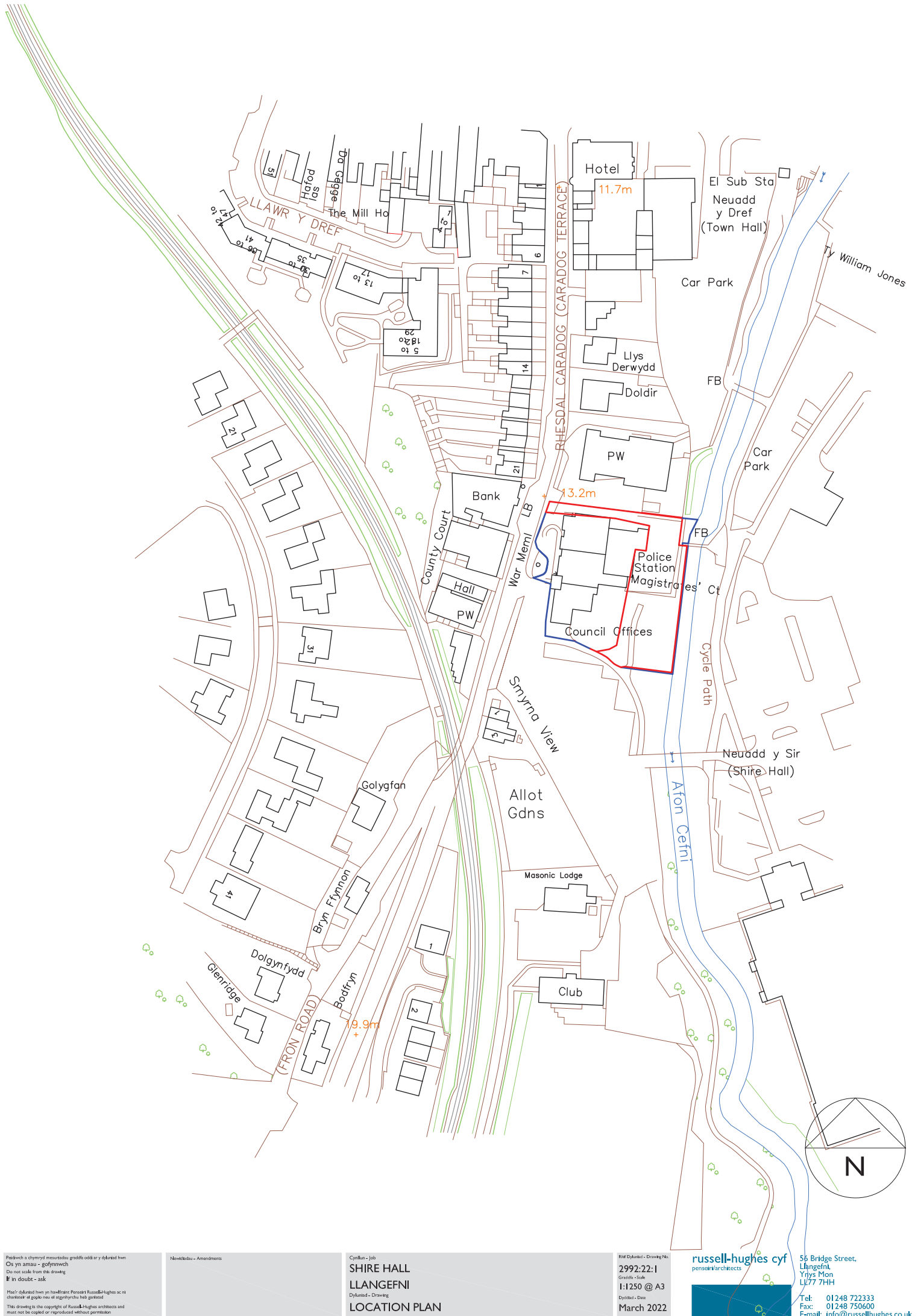
The walkover survey noted that the development area which is a patch of green sward which was formerly fields and lay at the southern side of Shire Hall and leading down to the Afon Cefni east. It was noted that the patch of land had modern services present in the form of drainage and electrical apparatus. In addition, it was also noted that the land could have been previously landscaped as part of the recent demolition phase being higher in elevation to the carpark situated to the south and next to the area.

Although the potential for archaeology is low, it is recommended that a watching brief is maintained during groundworks for the residential development scheme, due to the possibility of identifying activity associated with the former buildings and any archaeology present next to a river course.

5 SOURCES CONSULTED

1. Bowen, F. 2013 *Concept Science Park, Lledwigan, Llangefni*. Unpublished Archaeological Desk-Based Assessment
2. Brython Archaeology Document Number B1604.03 DRAFT
3. Chartered Institute for Archaeologists, 2020, Standard and guidance for historic environment desk-based assessment (Chartered Institute for Archaeologists, 2020);
4. Chartered Institute for Archaeologists, 2020, Standard and guidance for the collection, documentation, conservation and research of archaeological materials;
5. Chartered Institute for Archaeologists, 2020, Standard and guidance for the creation, compilation, transfer and deposition of archaeological archives;
6. Chartered Institute for Archaeologists, 2020, Standard and guidance for the archaeological investigation and recording of standing buildings or structures;
7. Crompton, W.J. 2008 *RCAHMW Field Notes from 1975*, seen at <https://coflein.gov.uk/en/site/407847?term=407847>
8. Davidson, A. & Roberts, R., 1994, RCAHMW Chapel Survey;
9. Davidson, A., 1998, Historic Churches of Gwynedd, Gazetteer of Churches: Diocese of Bangor;
10. Davidson, A., 2002, The Medieval Mills of Anglesey: Archaeological Threat Related Assessment;
11. English Heritage, 1991, Management of Archaeological Projects (MAP2);
12. Evans, R., 2008 , Gwalchmai Booster to Bodffordd Link Water Main and Llangefni to Penmynydd Replacement, Anglesey. Gwynedd Archaeological Trust Report 2024;
13. Evans, R., & Owen, K., 2018, Pen-yr-Orsedd, Llangefni Industrial Estate, Ynys Mon. Archaeological Watching Brief. Gwynedd Archaeological Trust Report 1425;
14. Gomme, G.L. 1887 *The Gentleman's Magazine Library; being a classified collection of the chief contents of the Gentleman's Magazine from 1731 to 1868* (seen in Kenney 2018)
15. Guidance for the Submission of Data to the Welsh Historic Environment Records (HERs) Version 2 (The Welsh Archaeological Trusts, 2022);
16. Guidelines for digital archives (Royal Commission on Ancient and Historic Monuments of Wales, 2015);

17. Gwyn, D., 2002, Y Fron, Llangefni, Archaeological Assessment. Gwynedd Archaeological Trust Report 433
18. Historic England, 2015, Management of Research Projects in the Historic Environment (MoRPHE);
19. Huw Owen, D., 2012, The Chapels of Wales;
20. Kenney, J., 2018, Hedd yr Ynys Excavation, Lon Fron, Llangefni, Anglesey. Gwynedd Archaeological Trust Report 1414;
21. Llwyd, A. 2007 *A History of the Island of Mona. The Guide to Anglesey by Anharad Llwyd, her famous prizewinning essay for the Beaumaris Eisteddfod of 1832* (Llyfrau Magma, Llansadwrn)
22. Royal Commission on Ancient and Historic Monuments of Wales, 2015, Guidelines for digital archives;
23. The Royal Commission on the Ancient and Historical Monuments of Wales, RC Buildings Records.



Paidwch a chymryd mesuridau graffig oddi ar y dyluniad hwn
Os yn amau - gofynnwch
Do not take from this drawing
If in doubt - ask

Hysbysu dyluniad hwn yn hysbysu Pensaer Russell Hughes ac ni
ddefnyddio'n ddwyreithnol yn eiddoedd eraill.
This drawing is the copyright of Russell Hughes architects
and must not be copied or reproduced without permission

Newidiodau - Amendments

Cynllun - Job

SHIRE HALL
LLANGEFNI
Dyluniad - Drawing
LOCATION PLAN

Rhif Dyluniad - Drawing No.

2992/22:1
Graddfa - Scale
1:1250 @ A3
Dyddiad - Date
March 2022

russell-hughes cyf
pensaer/architects





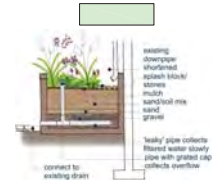
56 Bridge Street,
Llangefni,
Ynys Môn
LL77 7HH

Tel: 01248 722333
Ffôn: 01248 750600
E-bost: info@russellhughes.co.uk



Trees.
All trees to be bare rooted or cell grown.
Plant trees @2 meter spacing in an informal arrangement.
Fencing/ Protection
Hedge should be protected from livestock by stockproof fencing.
Pre-planting weed control to be carried out manually.
screening of site followed by a biodegradable mulch mat, or mulch wood chips.
All plants to be protected by spiral rabbit guards with bamboo canes- to be removed after 2-3 years. Temporary approved type shelter fencing to be strategically erected on site. All trees to be low staked.
Timing
Planting to take place in period October to March.

Species	Latin Name	height	Grown	No.	Notes
TYPE A					
Silver Birch	Betula pendula	100-120cm	BR	3	Low 
Alder	Alnus glutinosa	100-120cm	BR	4	Low 



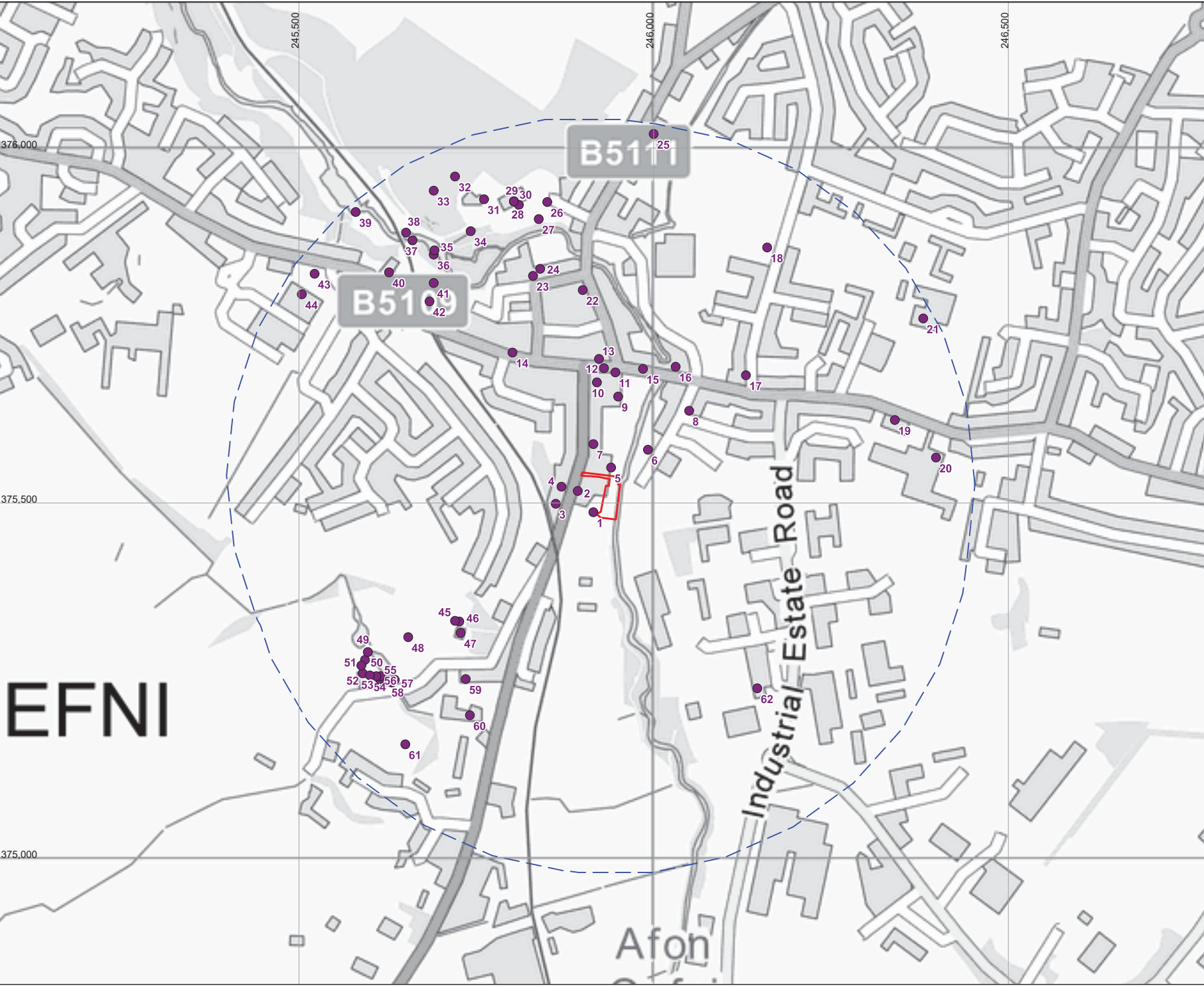
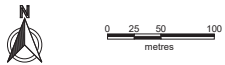


Figure 03: Historic Assets within the Study Area

- 1 Historic Asset
- Study Area (500m buffer)
- Proposed development area

Co-ordinate System OSGB 1936 / British National Grid EPSG:27700
Contains OS data © Crown copyright and database right 2017.
Additional data sourced from third parties, including public sector
information licensed under the Open Government Licence v1.0.



Ymddinedolaeth Archaeolegol Gwynedd
Gwynedd Archaeological Trust
www.heneb.co.uk

Craig Beuno,
Ffordd y Garth,
Bangor, Gwynedd
LL57 2RT

Ffon / Phone: +44 (0) 1248 352535
Ffacs / Fax: +44 (0)1248 370925
e-bost / e-mail: gat@heneb.uk

CLIENT:
Russell-Hughes Cyf.

SITE:
Shire Hall, Llangefni,
Ynys Môn, LL77 7ET

SCALE AT A3: 1:5,000	DATE: 25/04/22	DRAWN: NMC	CHECKED: JR
PROJECT NO: G2781	DRAWING NO: DBA/02B	REVISION:	A

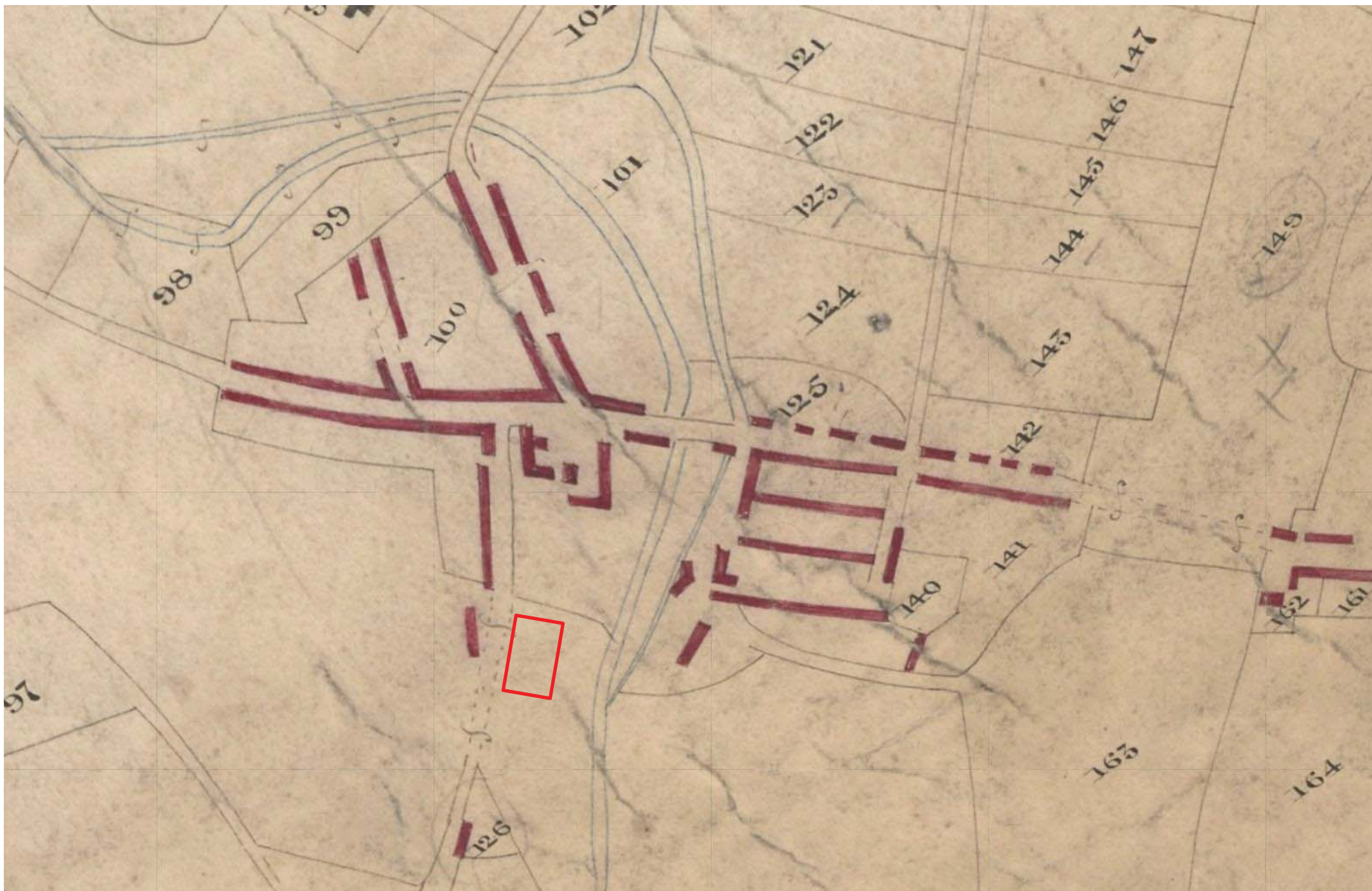
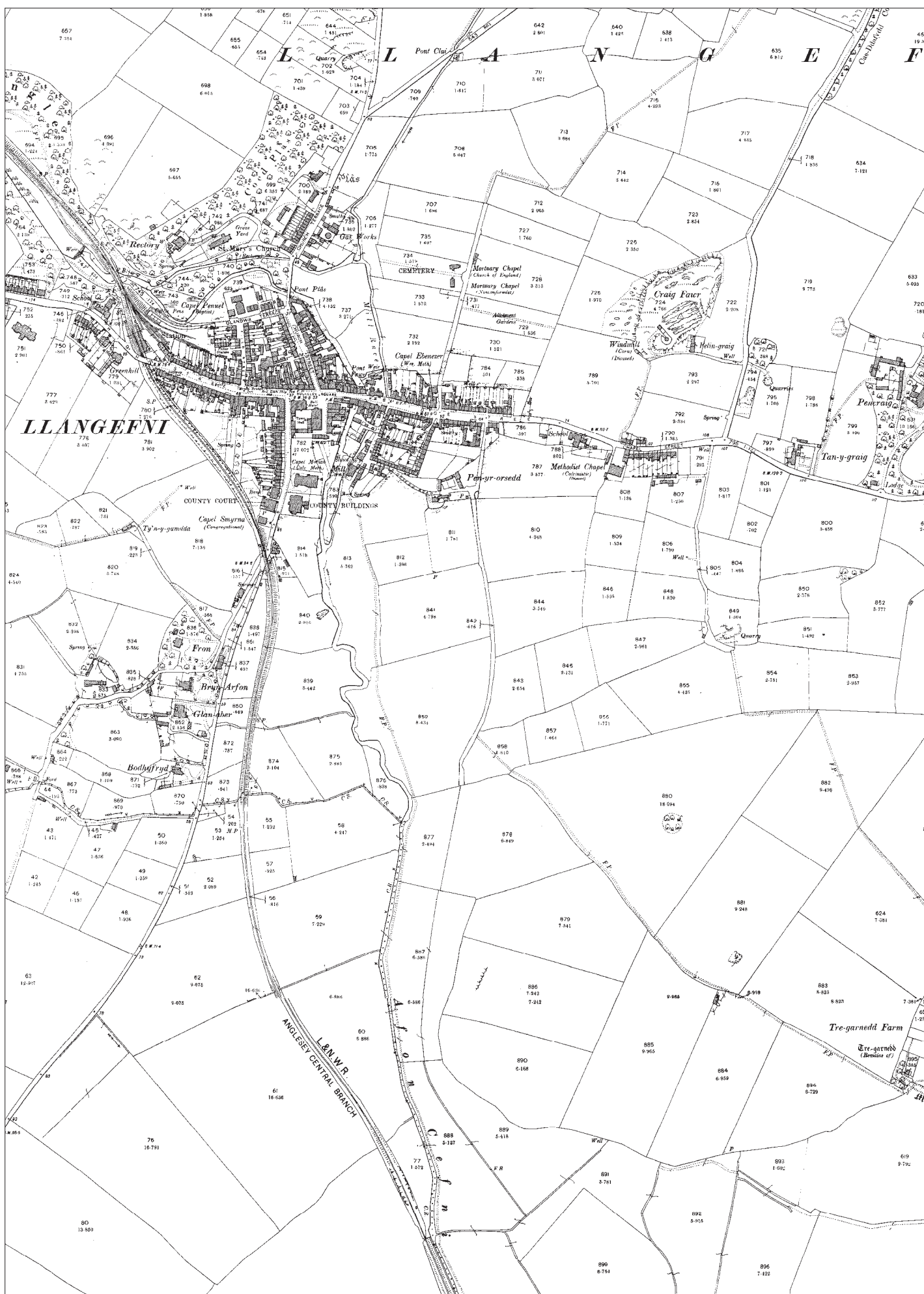


Figure 04: Reproduction of Llangefni Parish Tithe Map, published 1843. The general assessment area is highlighted in red. Not to scale (Source: NLW)



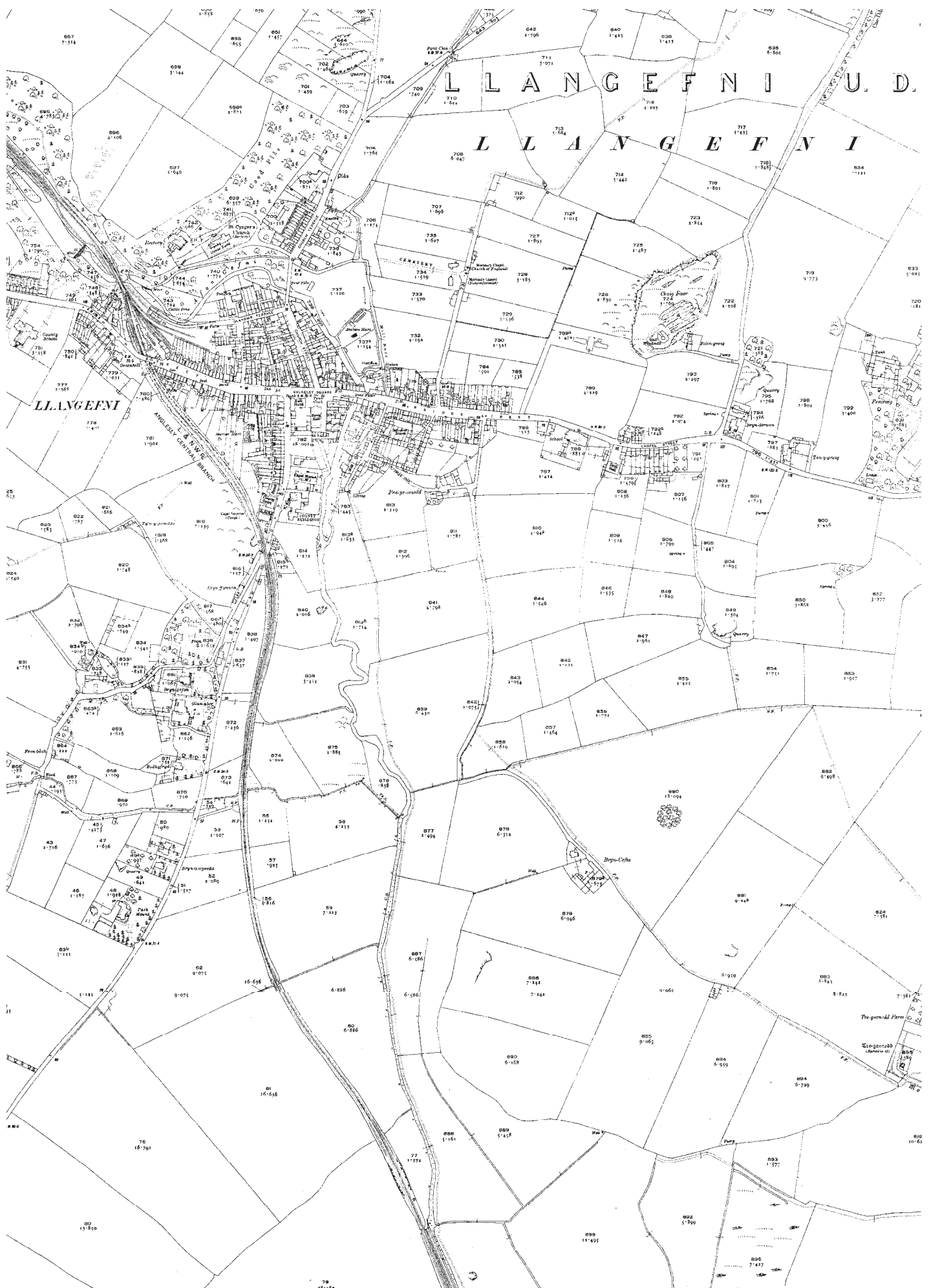




Figure 08: 1966 6626 OS66_104 081 (Welsh Government sourced arial photo)

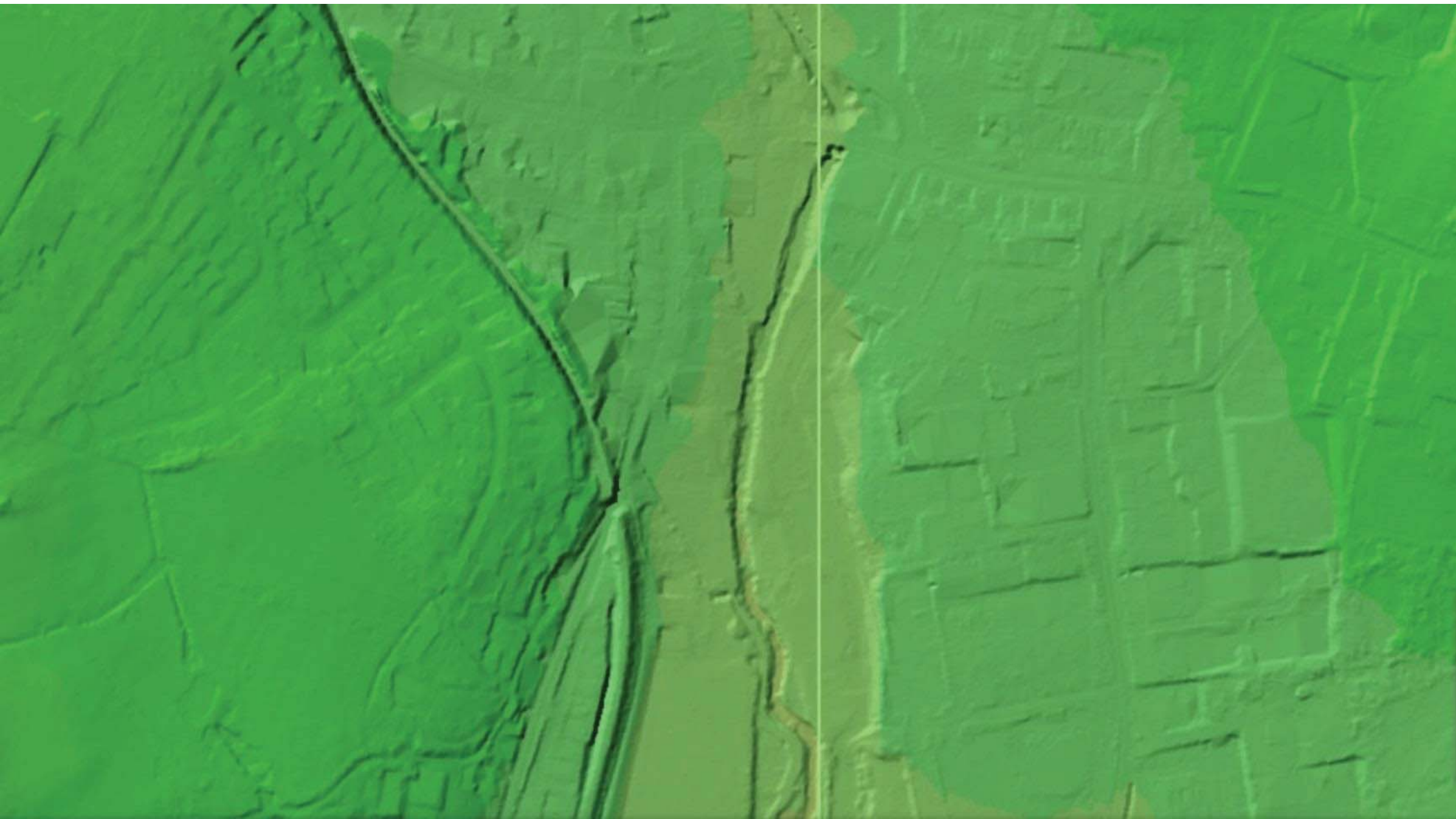


Figure 09: 1m DTM composite dataset for SH4575 sourced from Lle Geo-Portal: Not to scale



Figure 10: 1958 arial photo of Llangefni showing study area. WSE/261



Plate 01: General view of southern elevation of council buildings (Shire Hall) (Asset 1) from the south - ; scale: 1x1 m (archive reference: G2781_001).



Plate 02: General view of council buildings (Shire Hall), (Asset 1) from the southeast - ; scale: 1x1 m (archive reference: G2557_002).



Plate 03: General view of rear of council buildings (Shire Hall), (Asset 1) from the E - ; scale: 1x1m (archive reference: G2781_003).



Plate 04: General view of rear of council buildings (Shire Hall), (Asset 1) from east-northeast. - ; scale: 1x1m (archive reference: G2781_004).



Plate 05: General view of rear (Police station carpark) courtyard from the south - ; scale: Not used (archive reference: G2781_005).



Plate 06: View of development area from the northeast showing grassed area - ; scale: 1x1m (archive reference: G2781_006).



Plate 07: Angled view of modern porch leading into the rear of council building (Shire Hall) (Asset 1) from the southeast - ; scale: 1x1m (archive reference: G2781_007).



Plate 08: Angled view of modern porch and extensions at rear of council building (Shire Hall) (Asset 1) from the southeast - ; scale: 1x1m (archive reference: G2781_008).



Plate 09: View of brick built recess at southern elevation of Shire Hall (Asset 1) (street light in shot) from the south - ; scale: 1x1m (archive reference: G2781_009).



Plate 10: View of blocked doorway at rear of Shire Hall (Asset 1) from the east- ; scale: 1x1m (archive reference: G2781_010).



Plate 11: Angled view of shire hall and development area (grassed) from the southwest - ; scale: 1x1m (archive reference: G2781_011).



Plate 12: General angled view of manhole covers within development area from the west-southwest - ; scale: 1x1m (archive reference: G2781_012).



Plate 13: General view showing south side of Shire Hall (Asset 1) , the chapel (Asset 3) and court (Asset 4) from the carpark (South-southeast) - ; scale: Not used (archive reference: G2781_013).



Plate 14: General view of development area showing Shire Hall (Asset 1), court (Asset 4) and chapel (Asset 3) from the southeast - ; scale: 1x1m (archive reference: G2781_014).



Plate 15: Angled view of Shire Hall (Asset 1) and grass sward from the southwest - ; scale: Not used (archive reference: G2781_015).



Plate 16: View of south half of façade of Shire Hall (Asset 2: War Memorial included) - ; scale: Not used (archive reference: G2781_016).



Plate 17: View of northern half of façade of Shire Hall (Asset 2: War Memorial included) from the west-southwest - ; scale: Not used (archive reference: G2781_017).



Plate 18: View of Capel Smyrna (Asset 3) from the east - ; scale: Not used (archive reference: G2781_018).



Plate 19: Angled view of chapel and court house from the east (Asset 4) - ; scale: Not used (archive reference: G2781_019).



Plate 20: Slight angled view of court house (Asset 4) from the east-southeast - ; scale: Not used (archive reference: G2781_020).



Plate 21: View of war memorial (Asset 2) and front of shire hall (Asset 1) from the south - ; scale: Not used (archive reference: G2781_021).



Plate 22: Slightly angled view of Capel Moreia (Asset 5) from the west - ; scale: Not used (archive reference: G2781_022).



Plate 23: Slightly angled view of Capel Moreia (Asset 5) from the northwest - ; scale: Not used
 (archive reference: G2781_023).



Plate 24: General view of police carpark to rear of Shire Hall (Asset 1) showing development area
 (green) through gate from the north-northeast - ; scale: Not used (archive reference: G2781_024).

APPENDIX I

Gwynedd Archaeological Trust Written Scheme of Investigation

SHIRE HALL, LLANGEFNI, SIR FON (G2781)

WRITTEN SCHEME OF INVESTIGATION FOR
ARCHAEOLOGICAL ASSESSMENT



Prepared for

Russell-Hughes Cyf.

April 2023



Ymddiriedolaeth Archaeolegol Gwynedd
Gwynedd Archaeological Trust

Approvals Table				
	Role	Printed Name	Signature	Date
Originated by	Document Author	Michael Lynes	Michael Lynes	21/04/2023
Reviewed by	Document Reviewer	John Roberts		21/04/2023
Approved by	Principal Archaeologist	John Roberts		21/04/2023

Revision History			
Rev No.	Summary of Changes	Ref Section	Purpose of Issue

All GAT staff should sign their copy to confirm the project specification is read and understood and retain a copy of the specification for the duration of their involvement with the project. On completion, the specification should be retained with the project archive:

Name

Signature

Date

SHIRE HALL, LLANGEFNI, SIR FON (G2781)

WRITTEN SCHEME OF INVESTIGATION FOR ARCHAEOLOGICAL ASSESSMENT

Prepared for *Russell-Hughes Cyf.*, April 2023

1	INTRODUCTION	6
1.1	Aims and Objectives	7
1.1	Monitoring Arrangements	8
1.2	Historic Environment Record	9
2	METHODOLOGY	10
2.1	Introduction	10
2.2	Walkover Survey	12
2.3	Gazetteer of Features	13
2.4	Working Project Archive and Data Management Plan	16
2.5	Selection Strategy	19
3	PERSONNEL	20
4	HEALTH AND SAFETY	21
5	SOCIAL MEDIA	22
6	INSURANCE	23
6.1	Public/Products Liability	23
6.2	Employers Liability	23
6.3	Professional Indemnity	23
7	SOURCES CONSULTED	24
	FIGURE 01	25
	Produced location plan. Source: Russell-Hughes Cyf (Drawing 2992:22:1); Scale: 1:1250@A3.	25
	FIGURE 02	26
	Produced site plan. Source: Russell-Hughes Cyf (Drawing 2992:22:3); Scale: 1:500@A2.	26
	FIGURE 03	27
	New development proposed elevations. Source: Russell-Hughes Cyf (Drawing 2992:22:14); Scale: 1:100@A1.	27
	FIGURE 04	28
	Produced floor plans. Source: Russell-Hughes Cyf (Drawing 2992:22:11); Scale: 1:100@A1.	28
	FIGURE 05	29
	Produced site sectional elevations plan. Source: Russell-Hughes Cyf (Drawing 2992:22:13); Scale: 1:100@A2.	29
	APPENDIX I	30

Gwynedd Archaeological Trust basic recording pro-forma	30
APPENDIX II	31
Gwynedd Archaeological Trust photographic metadata pro-forma	31
APPENDIX III	32
Gwynedd Archaeological Trust selection strategy	32

1 INTRODUCTION

Gwynedd Archaeological Trust Contracts Section (GAT) has been asked by Russell-Hughes Cyf. to prepare an archaeological desk-based assessment at Shire Hall, Llangefni (SH 45908 75525; postcode LL77 7ET; ([Figure 01](#)). The proposed development includes the erection of seven residential units at the rear of the Grade II listed building at Llangefni under planning reference FPL/2023/41 ([Figure 02](#), [03](#), [04](#), [05](#)).

The assessment will be undertaken during April/May 2023 and will be completed in accordance with the following guidance:

- Guidance for the Submission of Data to the Welsh Historic Environment Records (HERs) Version 2 (The Welsh Archaeological Trusts, 2022);
- Guidelines for digital archives (Royal Commission on Ancient and Historic Monuments of Wales, 2015);
- Management of Archaeological Projects (English Heritage, 1991);
- Management of Research Projects in the Historic Environment: The MoRPHE Project Managers' Guide (Historic England, 2015);
- Standard and Guidance for an Archaeological Assessment; (Chartered Institute for Archaeologists, 2020);
- Standard and guidance for the collection, documentation, conservation, and research of archaeological materials (Chartered Institute for Archaeologists, 2020); and
- Standard and guidance for the creation, compilation, transfer, and deposition of archaeological archives (Chartered Institute for Archaeologists, 2020).

Gwynedd Archaeological Trust is certified to ISO 9001:2015 and ISO 14001:2015 (Cert. No. 74180/B/0001/UK/En) and is a Registered Organisation with the Chartered Institute for Archaeologists

1.1 Aims and Objectives

The desk-based assessment will aim to identify all assets (currently known and that may be identified from further research) that may be affected by the scheme, as well as identifying the potential for presently unknown sub-surface assets. The assessment will also identify assets that should be avoided by the scheme and include a basic record of assets such as field walls.

The objectives are to include:

- a detailed breakdown of the known archaeology in the vicinity of the site;
- an assessment of previous land use compiled from an analysis of historical maps, aerial photographs and other archive materials;
- a listing of the heritage-related planning constraints that may affect the site; and
- provide recommendations, if necessary, for future intrusive survey and construction excavation activities on site (requirements that would need to be in place during these or similar activities).

This will be delivered in the form of a desk-based study, a walkover survey, and a heritage asset gazetteer.

1.1 Monitoring Arrangements

The archaeological assessment will be monitored by the Development Control Archaeologist Gwynedd Archaeological Planning Service (GAPS); both the written scheme of investigation and all subsequent reporting must be approved by GAPS before final issue.

1.2 Historic Environment Record

In line with the Gwynedd Historic Environment Record (HER) requirements, the HER will be contacted at the onset of the project to ensure that any data arising is formatted in a manner suitable for accession to the HER and follows the guidance set out in *Guidance for the Submission of Data to the Welsh Historic Environment Records (HERs)* (The Welsh Archaeological Trusts, 2022). The HER will be informed of the project start date, location including grid reference, estimated timescale for the work, and further relevant information associated with the project.

The HER enquiry number for this project is GATHER1840 and the Event Primary Reference Number is 46634. The HER will be responsible for supplying Primary Reference Numbers for any new assets identified and recorded.

Prior to submission of data to the HER on completion of the project, a bilingual event summary document will be prepared in *Microsoft Word* based on the format defined in section 4.2 of *Guidance for the Submission of Data to the Welsh Historic Environment Records (HERs)* (Version 2).

2 METHODOLOGY

2.1 Introduction

The desk-based assessment will encompass a 500m buffer zone from which any known and suspected assets will be identified using the following resources:

1. The regional Historic Environment Register (HER) Gwynedd Archaeological Trust, Craig Beuno, Ffordd y Garth, Bangor, Gwynedd LL57 2RT) will be examined for information concerning the assessment area as detailed in [Figure 01](#). Examination of the core HER will be undertaken, including the 25inch to 1-mile County Series Ordnance Survey maps (Anglesey Sheet XVII.3 Published: 1st edition 1889, 2nd edition 1900 and 3rd edition 1920) and secondary sources, including the following reports:
 - Davidson, A. & Roberts, R., RCAHMW Chapel Survey;
 - Davidson, A., 2002, The Medieval Mills of Anglesey: Archaeological Threat Related Assessment;
 - Evans, R., & Owen, K., 2018, Pen-yr-Orsedd, Llangefni Industrial Estate, Ynys Mon. Archaeological Watching Brief. Gwynedd Archaeological Trust Report 1425;
 - Huw Owen, D., 2012, The Chapels of Wales;
 - The Royal Commission on the Ancient and Historical Monuments of Wales, RC Buildings Records
2. The National Monuments Record of Wales (Royal Commission on the Ancient and Historical Monuments of Wales, Plas Crug, Aberystwyth SY23 1NJ) and the online catalogue of the National Library of Wales (Penglais Rd, Aberystwyth SY23 3BU) will be examined checked for any sites additional to the HER;
3. Aerial photographs from the National Monuments Record of Wales (Royal Commission on the Ancient and Historical Monuments of Wales, National Monuments Record of Wales, Plas Crug, Aberystwyth SY23 1NJ) will be examined for potential features. This will include 1946 RAF and later vertical aerial photographs;
4. Archive data, including primary and secondary sources, historic maps and estate maps will be examined at the regional archives, if open and accessible. Archive data will include historic mapping such as the 1842 Llangefni Parish Tithe map and schedule;

5. Light Detection and Ranging (LiDAR) data will be examined from the Lle Geo-Portal at <http://lle.gov.wales/home> for information on potential surface features using 1m digital terrain modelling for area SH23.

2.2 Walkover Survey

A walkover survey will be undertaken along the proposed scheme route outlined in [Figure 02](#). The aim will be to visit known assets and add any new information not previously recorded. The assets will be mapped and located in advance as part of the desk-based assessment, using a combination of historic and GIS based data; this information will then be used to prepare a list of known assets; these lists will include the Primary Reference Number (PRN), Site Name, Site Type and National Grid Reference co-ordinate for each asset. Whilst the archaeological features identified in previous work are recorded on the Historic Environment Record, their spatial extents may not have been mapped in detail and the walkover survey will aim to enhance this record. The walkover survey will also include a basic record of visible/upstanding assets encountered, such as field walls. The walkover survey and basic record will be completed using a GAT pro-forma ([Appendix I](#)) and will include a description, measurements (if practical) and a photographic record. The photographs will be taken in RAW format using a digital SLR set to maximum resolution (Nikon D3000; resolution: 3,872 × 2,592 [10.2 effective megapixels]) and a photographic metadata table will be completed using a GAT pro-forma ([Appendix II](#)) and a copy included in the report. Photographic images will be archived in TIFF format; the archive numbering system will start from G2781_001. A handheld GPS unit will be used during the walkover survey.

2.3 Gazetteer of Features

A gazetteer will be compiled for any existing and newly identified sites, based on information sourced from the desk-based assessment and walkover survey; the gazetteer will be prepared in the following format and include:

Feature Number	
Site name	
PRN number	
Grid reference	
Designation	
Period	
Site type	
Assessment category	
Description	
Impact	
Recommendation	

The following categories will be used to define the assessment category of each archaeological asset:

Category A - Sites of National Importance.

Scheduled Monuments, Listed Buildings of grade II* and above, as well as those that would meet the requirements for scheduling (ancient monuments) or listing (buildings) or both. Sites that are scheduled or listed have legal protection, and it is recommended that all Category A sites remain preserved and protected *in situ*.

Category B - Sites of regional or county importance.

Grade II listed buildings and sites which would not fulfil the criteria for scheduling or listing, but which are nevertheless of particular importance within the region. Preservation *in situ* is the preferred option for Category B sites, but if damage or destruction cannot be avoided, appropriate detailed recording might be an acceptable alternative.

Category C - Sites of district or local importance.

Sites which are not of sufficient importance to justify a recommendation for preservation if threatened. Category C sites nevertheless merit adequate recording in advance of damage or destruction.

Category D - Minor and damaged sites.

Sites that are of minor importance or are so badly damaged that too little remains to justify their inclusion in a higher category. For Category D sites, rapid recording, either in advance of or during destruction, should be sufficient.

Category E - Sites needing further investigation.

Sites, the importance of which is as yet undetermined and which will require further work before they can be allocated to categories A - D are temporarily placed in this category, with specific recommendations for further evaluation.

The impact of the proposed works on any asset will be identified using the following impact criteria, defined either as *none, slight, unlikely, likely, significant, considerable or unknown* as follows:

None:

There is no construction impact on this asset.

Slight:

This has generally been used where the impact is marginal and would not by the nature of the site cause irreversible damage to the remainder of the asset, e.g. part of a trackway or field bank.

Unlikely:

This category indicates sites that fall within the band of interest but are unlikely to be directly affected. This includes sites such as standing and occupied buildings at the margins of the band of interest.

Likely:

Sites towards the edges of the study area, which may not be directly affected, but are likely to be damaged in some way by the construction activity.

Significant:

The partial removal of an asset affecting its overall integrity. Assets falling into this category may be linear features such as roads or tramways where the removal of part of the feature could make overall interpretation problematic.

Considerable:

The total removal of an asset or its partial removal which would effectively destroy the remainder of the site.

Unknown:

This is used when the location of the asset is unknown, but thought to be in the vicinity of the proposed works.

2.4 Working Project Archive and Data Management Plan

As stated in *Standard and guidance for the creation, compilation, transfer and deposition of archaeological archives* (Chartered Institute for Archaeologists, 2020), para. 3.3.1, “Project specifications, research designs or similar documents should include a project- specific Selection Strategy and a Data Management Plan. The Chartered Institute for Archaeologists states that “(I)t is widely accepted that not all the records and materials collected or created during the course of an Archaeological Project require preservation in perpetuity. These records and materials constitute the Working Project Archive which will be subject to Selection, in order to establish what will be retained for long-term curation” (<https://www.archaeologists.net/selection-toolkit>). The working project archive in this instance will comprise digital data including photographic data, documentation and written data, as well as paper records, including project pro-formas. The Data Management Plan will be stored on a project specific form in the GAT project database (format: *Microsoft Access*) and the Selection Strategy will be based on a GAT pro-forma (format *Microsoft Word*) that will be appended to the final report.

This working project archive data will be processed as follows:

1. Pro-formas: all cross referenced and scanned for digital archiving;
2. Photographic Metadata: cross-referenced with all pro-formas and completed in *Microsoft Excel*;

Information from these will be used to compile the project report. The physical archive will be stored in a designated project folder and the location confirmed in the Data Management Plan; the digital dataset will be stored on a dedicated Trust server, with the location confirmed in the Data Management Plan via a specific hyperlink. External datasets for the HER and RCAHMW are as defined in the dissemination strategy below.

The project report will include the following:

1. Front cover;
 2. Inner cover;
 3. Figures and Plates List;
 4. Non-technical summary (Welsh/English);
 5. Introduction;
 6. Methodology;
 - i. Archaeological assessment;
 - ii. Walkover survey;
 7. Results;
 - a. Desk-based assessment;
 - b. Walkover survey;
 - c. Gazetteer of assets;
 8. Conclusions
 9. Acknowledgements;
 10. Bibliography;
 - a. Primary sources;
 - b. Secondary sources;
 11. Figures; inc.:
 - location plan;
 - historic mapping;
 - location plan with identified features.
 12. Plates; inc.
 - Illustrative examples from the walkover survey
 13. Appendix I (approved specification);
 14. Appendix II (Photographic metadata - walkover survey);
 15. Appendix III (List of Statutory and non-statutory assets within a 500m buffer zone);
 16. Appendix IV (Selection Strategy)
- Back cover.

Illustrations will include plans of the location of the study area and archaeological sites. Historical maps, when appropriate and if copyright permissions allow, will be included.

The following dissemination and archiving of the report and digital dataset will be applied:

- A digital report will be provided to the client and GAPS (draft report then final report);
- A digital report will be provided to the regional Historic Environment Record; this will be submitted within six months of project completion (final report only), along with a digital dataset comprising an Event PRN summary. The report and dataset will be submitted in accordance with the required standards set out in *Guidance for the Submission of Data to the Welsh Historic Environment Records (HERs)* (Version 2); and
- A digital report and digital archive dataset will be provided to Royal Commission on Ancient and Historic Monuments, Wales (final report only), in accordance with the *RCAHMW Guidelines for Digital Archives Version 1*. The dataset will be prepared in the format required by RCAHMW and will include:
 - Photographic metadata (Microsoft Access);
 - Photographic archive (TIFF format);
 - Project Information form (Excel);
 - File Information form (Excel) – Microsoft Word report text final;
 - File Information form (Excel) – Photographic metadata (general);
 - File Information form (Excel) – Adobe PDF report final; and
 - File Information form (Excel) - Photographic metadata (detail).

2.5 Selection Strategy

As defined in *Standard and guidance for the creation, compilation, transfer and deposition of archaeological archives* (Chartered Institute for Archaeologists, 2020) section 3.3.1, a project specific selection strategy and data management plan should be prepared. In support of this, the Chartered Institute for Archaeologist (CIfA), have stated that it is “widely accepted that not all the records and materials collected or created during the course of an Archaeological Project require preservation in perpetuity. These records and materials constitute the Working Project Archive which will be subject to Selection, in order to establish what will be retained for long-term curation”. The aim of selection is to ensure that all the elements retained from the Working Project Archive for inclusion in the Archaeological Archive are appropriate to establish the significance of the project and support “future research, outreach, engagement, display and learning activities”. Selection should be “focused on selecting what is to be retained to support these future needs, rather than deciding what can be dispersed” and can be qualified by a selection strategy, which details the project-specific selection process, agreed by all parties (including GAPS, client and/or landowner), which will be applied to a Working Project Archive prior to its transfer into curatorial care as the Archaeological Archive.

The selection strategy will be confirmed in the assessment report and will take into account:

- The aims and objectives of the project.
- The brief and/or Written Scheme of Investigation (WSI).
- The Collecting Institution’s collection policy and/or deposition guidelines.
- Local and regional research frameworks.
- Relevant thematic or period specific research frameworks.
- The project’s Data Management Plan (DMP).
- Internal recording and reporting policies.
- Material-specific guidance documents.

The selection strategy pro-forma is included as [Appendix III](#).

3 PERSONNEL

The project will be managed by John Roberts, Principal Archaeologist GAT Contracts Section with attendances on-site undertaken by a GAT Project Archaeologist(s). The Project Archaeologist will be responsible for following:

- Client liaison;
- GAPS liaison;
- Completing all on site pro-formas and the fieldwork archive itemised above, including the digital project register;
- Sourcing Primary Reference Numbers (PRN) from the GAT HER for any new features identified (if applicable);
- Completing an event summary and creating or updating PRN data, dependent on results; and
- For submitting a draft final report for project manager review and approval, to then be submitted as per the arrangements defined above.

4 HEALTH AND SAFETY

A project specific risk assessment will be prepared ahead of the walkover survey, identifying any expected risks and suitable control measures. Copies of the site-specific risk assessment will be supplied to the client prior to the start of the walkover survey.

5 SOCIAL MEDIA

One of the key aims in the GAT mission statement is to improve the understanding, conservation and promotion of the historic environment in our area and inform and educate the wider public. To help achieve this, GAT maintains an active social media presence and seeks all opportunities to promote our projects and results. With permission, GAT would like the opportunity to promote our work on this scheme through our social media platforms. This could include social media postings during our attendance on site as well as any postings to highlight results. In all instances, approval will be sought from client prior to any postings.

6 INSURANCE

6.1 Public/Products Liability

Limit of Indemnity- £5,000,000 any one occurrence and in the aggregate in respect of Product Liability

INSURER Ecclesiastical Insurance Office Plc.

POLICY TYPE Public/Products Liability

POLICY NUMBER UN/000375

EXPIRY DATE 21st June 2023

6.2 Employers Liability

Limit of Indemnity- £10,000,000 any one occurrence.

INSURER Ecclesiastical Insurance Office Plc.

POLICY TYPE Employers Liability

POLICY NUMBER 24765101 CHC / UN/000375

EXPIRY DATE 21st June 2023

6.3 Professional Indemnity

Limit of Indemnity- £5,000,000 in respect of each and every claim

INSURER Hiscox Insurance Company Limited

POLICY TYPE Professional Indemnity

POLICY NUMBER PL-PSC10002389775/00

EXPIRY DATE 22nd July 2023

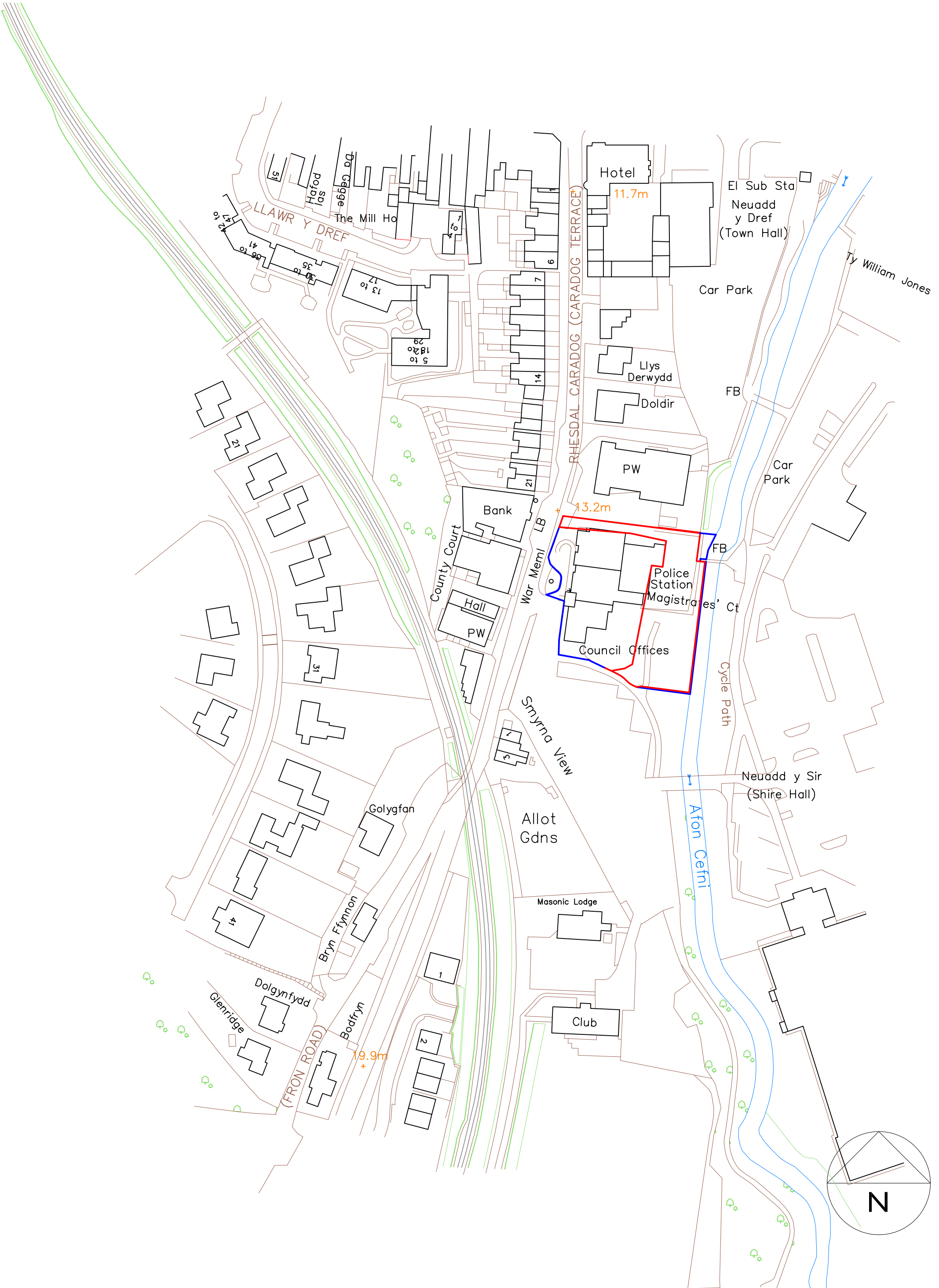
7 SOURCES CONSULTED

1. Chartered Institute for Archaeologists, 2020, Standard and guidance for archaeological assessment (Chartered Institute for Archaeologists, 2020);
2. Chartered Institute for Archaeologists, 2020, Standard and guidance for the collection, documentation, conservation and research of archaeological materials;
3. Chartered Institute for Archaeologists, 2020, Standard and guidance for the creation, compilation, transfer and deposition of archaeological archives;
4. Chartered Institute for Archaeologists, 2020, Standard and guidance for the archaeological investigation and recording of standing buildings or structures;
5. Davidson, A. & Roberts, R., RCAHMW Chapel Survey;
6. Davidson, A., 2002, The Medieval Mills of Anglesey: Archaeological Threat Related Assessment;
7. English Heritage, 1991, Management of Archaeological Projects (MAP2);
8. Evans, R., & Owen, K., 2018, Pen-yr-Orsedd, Llangefni Industrial Estate, Ynys Mon. Archaeological Watching Brief. Gwynedd Archaeological Trust Report 1425;
9. Guidance for the Submission of Data to the Welsh Historic Environment Records (HERs) Version 2 (The Welsh Archaeological Trusts, 2022);
10. Guidelines for digital archives (Royal Commission on Ancient and Historic Monuments of Wales, 2015);
11. Historic England, 2015, Management of Research Projects in the Historic Environment (MoRPHE);
12. Huw Owen, D., 2012, The Chapels of Wales;
13. Royal Commission on Ancient and Historic Monuments of Wales, 2015, Guidelines for digital archives;
14. The Royal Commission on the Ancient and Historical Monuments of Wales, RC Buildings Records

FIGURE 01

Produced location plan. Source: Russell-Hughes Cyf (Drawing 2992:22:1);

Scale: 1:1250@A3.



Peldiwech a chymryd mesuriadau graddfa oddi ar y dyluniad hwn
Os yn amau - gofynnwch
Do not scale from this drawing
If in doubt - ask

Mae'r dyluniad hwn yn hawlfraint Penseiri Russell-Hughes ac ni
chaniateir ei gopio neu ei atgynhyrchu heb ganiatid
This drawing is the copyright of Russell-Hughes architects and
must not be copied or reproduced without permission

Newidadau - Amendments

Cyfrifun - Job
SHIRE HALL
LLANGEFNI
Dyluniad - Drawing
LOCATION PLAN

Rhif Dyluniad - Drawing No.
2992:22:1
Graddfa - Scale
1:1250 @ A3
Dyddiad - Date
March 2022

russell-hughes cyf
penseiri/architects



56 Bridge Street,
Llangefni,
Ynys Mon
LL77 7HH
Tel: 01248 722333
Fax: 01248 750600
E-mail: info@russellhughes.co.uk

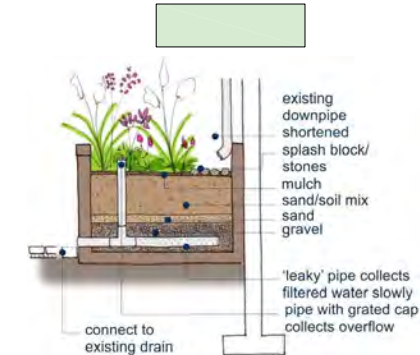
FIGURE 02

**Produced site plan. Source: Russell-Hughes Cyf (Drawing 2992:22:3);
Scale: 1:500@A2.**



Trees.
All trees to be bare rooted or celli grown.
Plant trees @2 meter spacing in an informal arrangement.
Fencing/ Protection
Hedge should be protected from livestock by stockproof fencing.
Pre-planting weed control to be carried out manually .
screening of site followed by a biodegradable mulch mat, or mulch wood chips.
All plants to be protected by spiral rabbit guards with bamboo canes- to be removed after 2-3 years. Temporary approved type shelter fencing to be strategically erected on site. All trees to be low staked.
Timing
Planting to take place in period October to March.

Species	Latin Name	height	Grown	No.	Notes
TYPE A					
Silver Birch	Betula pendula	100-120cm	BR	3	Low 
Alder	Alnus glutinosa	100-120cm	BR	4	Low 



Pleidiwch a chymryd mesuriadau graddfa oddi ar y dyfyniad hwn
Os yn amau - gofynnwch
Do not scale from this drawing
If in doubt - ask
Mae'r dyfyniad hwn yn hawffraint Penseiri Russell-Hughes ac ni
chantateir ei gopio neu ei atgynhyrchu heb ganiatid
This drawing is the copyright of Russell-Hughes architects and
must not be copied or reproduced without permission

Newidadau - Amendments

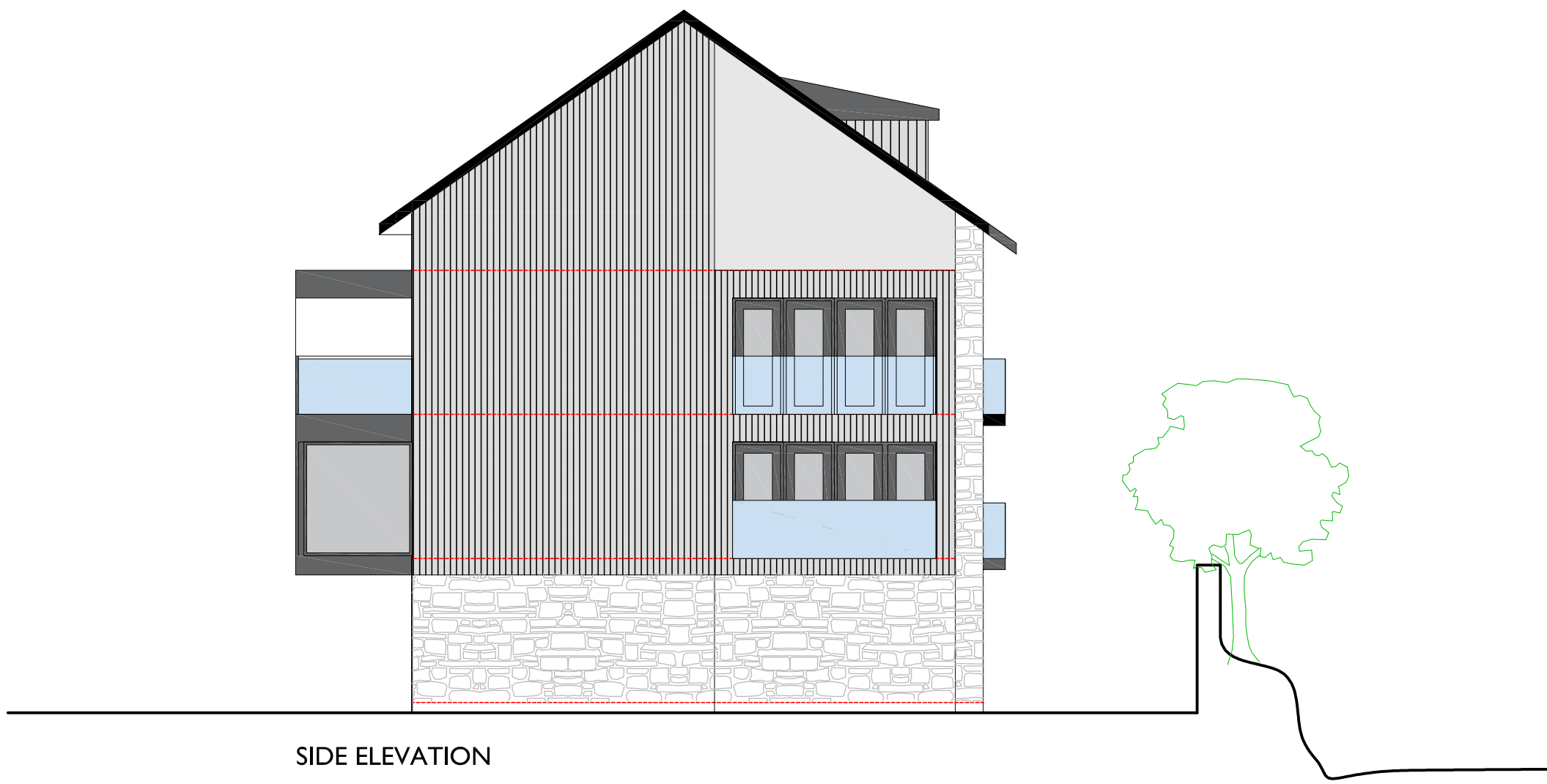
Cynllun - Job
**SHIRE HALL,
LLANGEFNI**
Dyfyniad - Drawing
PROPOSED SITE PLAN

Rhif Dyfyniad - Drawing No.
2992:22:3
Graddfa - Scale
1:500 @ A2
Dyddiad - Date
March 2022

russell-hughes cyf
penseiri/architects
56 Bridge Street,
Llangefni,
Ynys Môn
LL77 7HH
Tel: 01248 722333
Fax: 01248 750600
E-mail: info@russellhughes.co.uk

FIGURE 03

**New development proposed elevations. Source: Russell-Hughes Cyf
(Drawing 2992:22:14); Scale: 1:100@A1.**



SIDE ELEVATION



SCHWEGLER 1SP SPARROW TERRACE



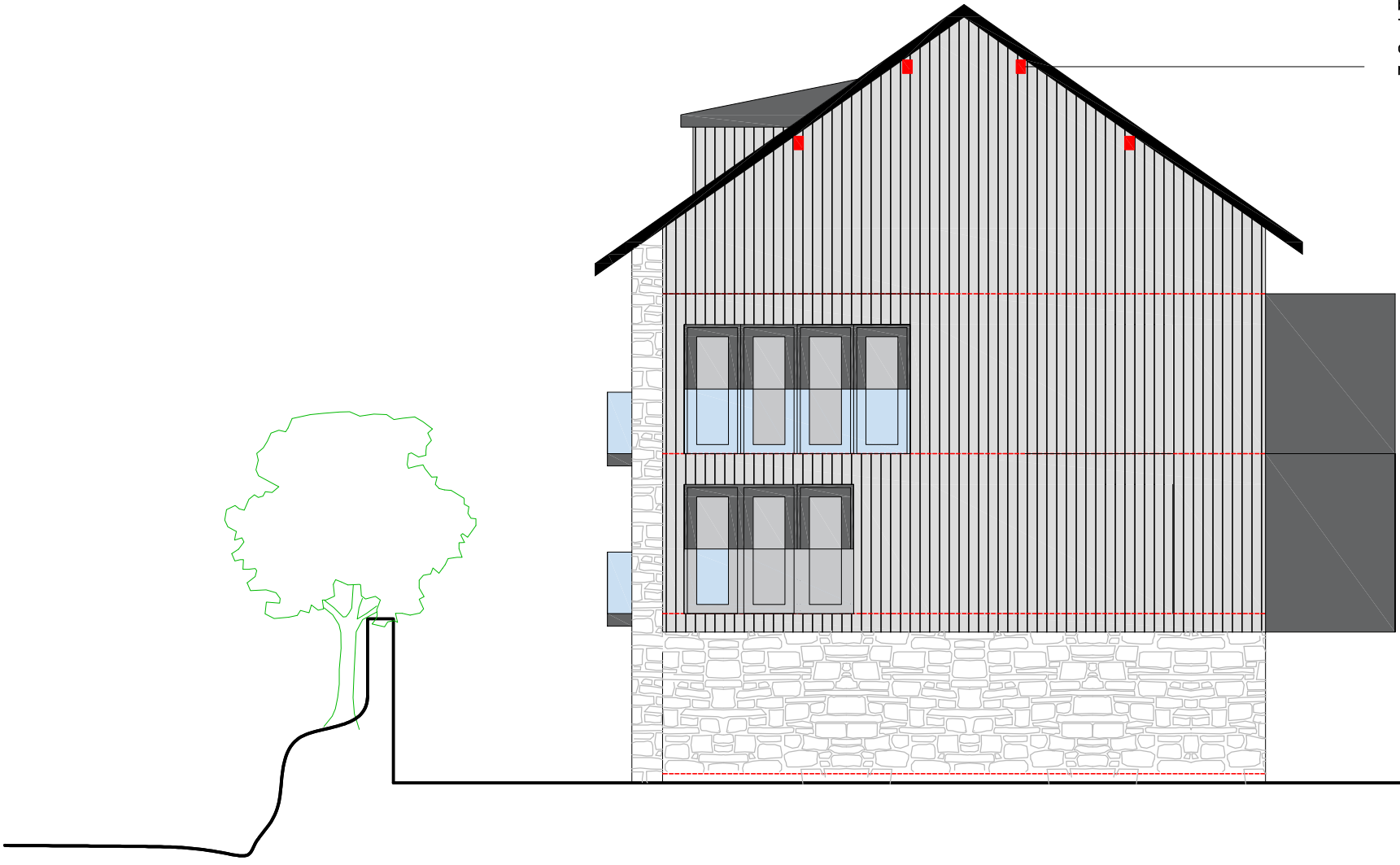
KNIGHTSBRIDGE GL-IP65 EXTERNAL WALL DOWNLIGHT
WITH MAX 35W WARM WHITE LED LAMP & TIMER



Vivara Pro Build-in Woodstone Bat Tubes



4 no. Vivara Pro Build-in Woodstone Bat Tubes positioned side by side (inter-connecting) and built into block wall near apex. This elevation must not be illuminated by external lighting c.100mm un-mortared gaps left between ridge tiles to provide roosting crevices for bats



SIDE ELEVATION



FRONT ELEVATION

NATURAL SLATE ROOF COVERING

GRAY UPVC FASCIAS AND RWG

ALUMINIUM GREY WINDOWS & DOORS

COLORLED RENDER

LOCAL STONE CLADDING



REAR ELEVATION

ATTIC FLOOR

SECOND FLOOR

FIRST FLOOR

GROUND FLOOR

Pleidwch a chymryd mesuriadau graddfa oddi ar y dyluniad hwn
Os yn amau - gofynnwch
Do not scale from this drawing
If in doubt - ask

Mae'r dyluniad hwn yn hawlfraint Penseiri Russell-Hughes ac ni chaniateir ei gopïo neu ei atgynhyrchu heb ganiatâd
This drawing is the copyright of Russell-Hughes architects and must not be copied or reproduced without permission

Newidiadau - Amendments

Cynllun - Job

NEW DEVELOPMENT AT SHIRE HALL,
LLANGFENI

Dyluniad - Drawing

NEW DEVELOPMENT PROPOSED ELEVATIONS

Rhif Dyluniad - Drawing No.

2992:22:14

Graddfa - Scale

1:100 A1

Dyddiad - Date

May 2022

russell-hughes cyf
penseiri/architects

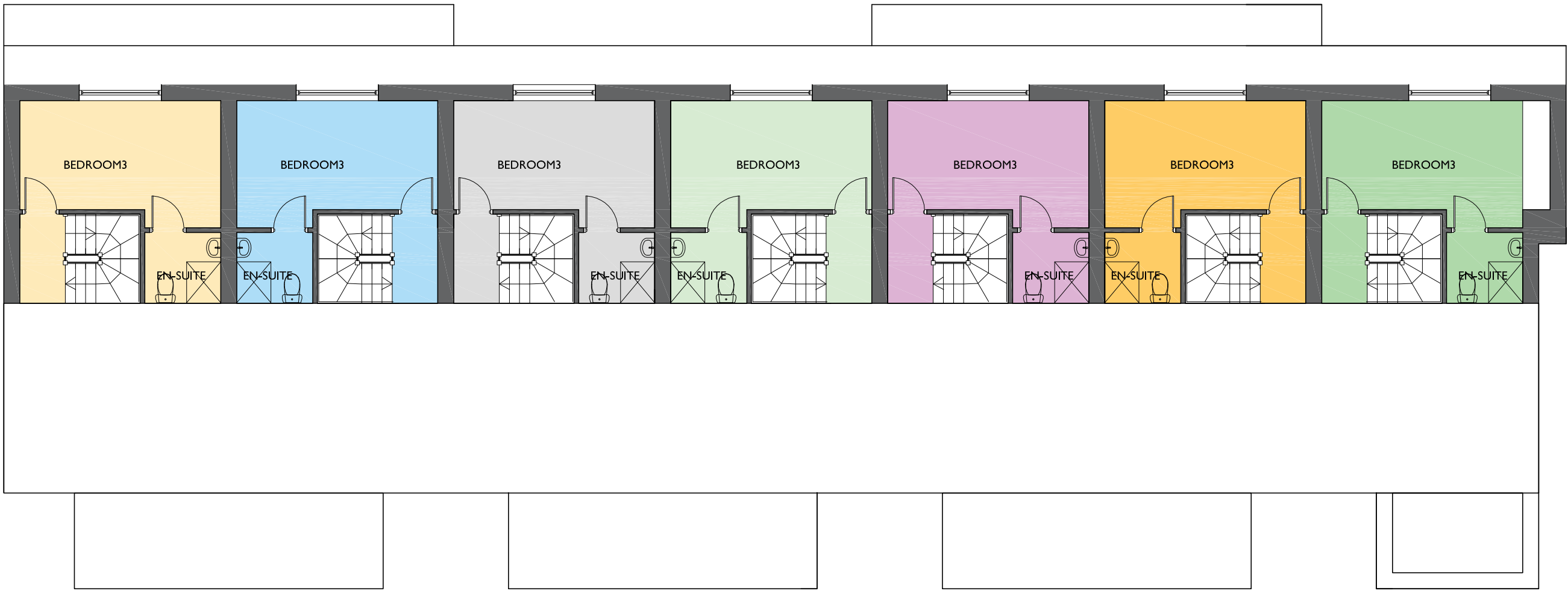


56 Bridge Street,
Llangefni,
Ynys Mon
LL77 7HH

Tel: 01248 722333
Fax: 01248 750600
E-mail: info@russellhughes.co.uk

FIGURE 04

**Produced floor plans. Source: Russell-Hughes Cyf (Drawing 2992:22:11);
Scale: 1:100@A1.**



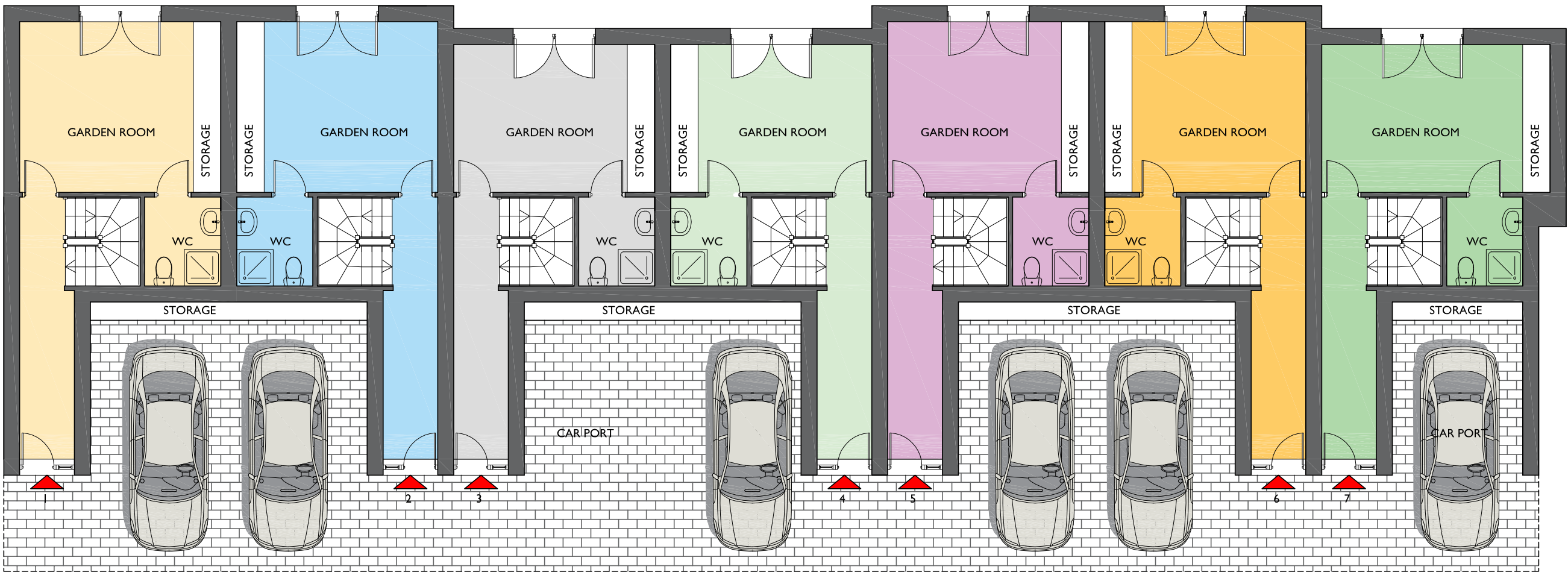
ATTIC FLOOR PLAN



SECOND FLOOR PLAN



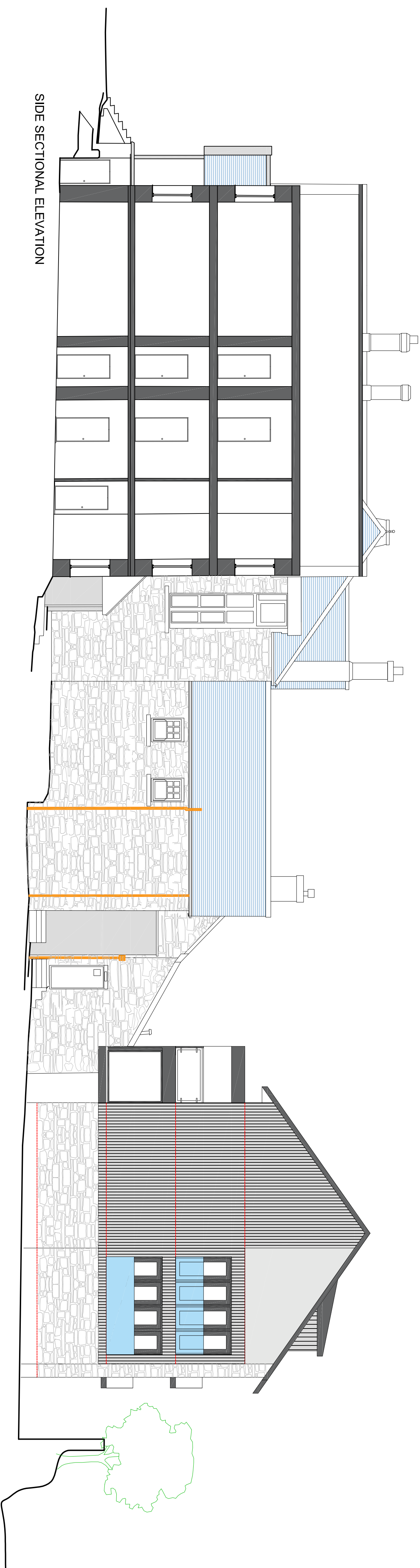
FIRST FLOOR PLAN



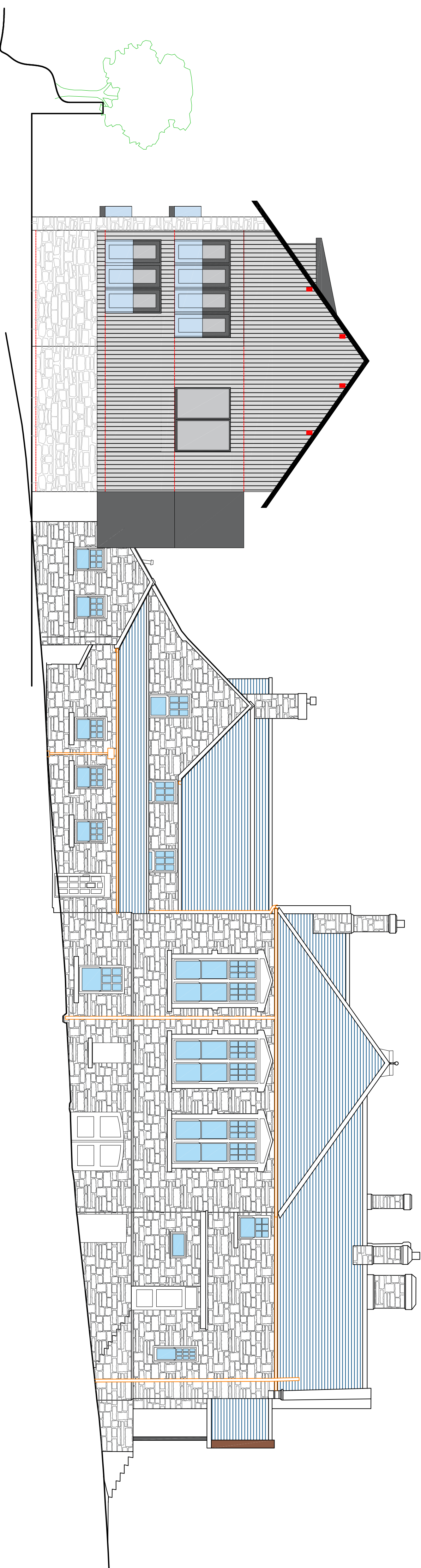
GROUND FLOOR PLAN

FIGURE 05

**Produced site sectional elevations plan. Source: Russell-Hughes Cyf
(Drawing 2992:22:13); Scale: 1:100@A2.**



SIDE SECTIONAL ELEVATION



Pedwch a chynwrg mesurhau graddis oddi ar y dylunad lwm
Os yn amau - gofynnwch
Do not scale from this drawing
If in doubt - ask

Mae'r dylunad lwm yn hysgrifau Penneil Russell-Hughes ac ni
dymuniad ei gyswgu neu ei ddefnyddio heb ganiadau
This drawing is the copyright of Russell-Hughes architects and
must not be copied or reproduced without permission

Newidadau - Amendments

Cynllun - Job

SHIRE HALL,
LLANGFENI
Dylunad - Drawing
PROPOSED SITE SECTIONAL ELEVATIONS

Roll Dylunad - Drawing No.
2992:22:13
Graddfa - Scale
1:100@A2
Dyddiad - Date
October 2022

APPENDIX I

Gwynedd Archaeological Trust basic recording pro-forma

[illegible]

APPENDIX II

Gwynedd Archaeological Trust photographic metadata pro-forma



Digital Photographic Record

Include main context numbers for each shot, drawing numbers for sections and any other relevant numbers for cross referencing.

Delete any unwanted photos **immediately** from the camera.

Regularly upload photographs to computer.

[illegible]

APPENDIX III

Gwynedd Archaeological Trust selection strategy

G2781_Shire_Hall_Llangefni

20/04/2023 v1.0

Selection Strategy

Project Information

Project Management

Project Manager	John Roberts john.roberts@heneb.co.uk
Archaeological Archive Manager	John Roberts john.roberts@heneb.co.uk
Organisation	Gwynedd Archaeological Trust

Stakeholders		Date Contacted
Collecting Institution(s)	GAT Historic Environment Record	20/04/2023
	RCAHMW	On completion of Project Archive
	Oriel Ynys Môn, Rhosmeirch Llangefni LL77 7TQ	If applicable, post-fieldwork based on artefact recovery
Project Lead / Project Assurance	Gwynedd Archaeological Planning Services	n/a
Landowner / Developer	Chief Properties Ltd	n/a

Resources

Resources required

Describe the resources required to implement this Selection Strategy, particularly if unusual resources are required.

No unusual resources required outside of GAT normal operating equipment and personnel.

Context

Describe below the context of this Selection Strategy. You should refer to:

- The aims and objectives of the project;
- Local Authority guidance (including the brief);
- Research Frameworks;
- The repository collection development policy and/or deposition policy;
- Material-specific guidance documents.

Note: This section may be copied from your Project Design/WSI to ensure all Stakeholders receive this context information.

The full aims and objectives of this project are detailed in the project specific WSI.

Gwynedd Archaeological Trust Contracts Section (GAT) has been asked by Russell-Hughes Cyf. to prepare an archaeological desk-based assessment at Shire Hall, Llangefni (SH 45908 75525; postcode LL77 7ET; (Figure 01). The proposed development includes the erection of seven residential units at the rear of the Grade II listed building at Llangefni under planning reference FPL/2023/41 (Figure 02, 03, 04, 05).

Source: Gwynedd Archaeological Trust. 2023. Shire Hall, Llangefni Written Scheme of Investigation For Archaeological Desk Based Assessment. Prepared for Russell-Hughes Cyf. April 2023. Project G2781.

1 – Digital Data

Stakeholders

Name the individual(s) responsible for the Digital Data Selection decisions (i.e. Archaeological Archive Manager, Project Manager, Collections Curator).

John Roberts (GAT Principal Archaeologist)

Selection

Location of Data Management Plan (DMP)

Selection of digital data elements should be considered in your project's DMP. For the purpose of the Selection Strategy, you can either copy the selection section of your DMP below, or attach it as an appendix to this document. Please indicate here if the DMP is attached.

All digital data will be collected, stored and selected in lines with the Gwynedd Archaeological Trust (GAT) Data Management Plan located on GAT's servers (available on request).

Following the completion of the fieldwork, a working project archive will be created based on following task list;

1. Pro-formas: all cross referenced and complete;
2. Photographic Metadata: completed in *Microsoft Access* and cross-referenced with all pro-formas;
3. Survey data: downloaded using a Computer Aided Design package;
4. Sections: all cross referenced and complete;
5. Plans: all cross referenced and complete;
6. Context register: quantified and register completed.

All relevant site archive data will be added to a digital project register specific to this project, which will be prepared in *Microsoft Excel*. This data will be used as the basis for the physical and digital dataset archives. Information from these will be used to compile the project report. The physical archive will be stored in a designated project folder and the location confirmed in the Trust project database; the digital dataset will be stored on a dedicated Trust server, with the location confirmed in the Trust project database via a specific hyperlink. External datasets for the HER and RCAHMW are as defined in the dissemination strategy below. De-selected digital data will be confirmed in an updated digital management plan appended to the final report

De-Selected Digital Data

There is no de-selected data

2 – Documents

Stakeholders

Name the individual(s) responsible for the Documents Selection decisions (i.e. Archaeological Archive Manager, Project Manager, Repository Representative).

John Roberts – Principal Archaeologist, Gwynedd Archaeological Trust;
Sean Derby – Historic Environment Record, Gwynedd Archaeological Trust;
Gareth Edwards, *Head of Knowledge and Understanding, RCAHMW*

Selection

- A digital report will be provided to the regional Historic Environment Record; this will be submitted within six months of project completion (final report only), along with a digital dataset comprising an Event PRN summary. The report and dataset will be submitted in accordance with the required standards set out in *Guidance for the Submission of Data to the Welsh Historic Environment Records (HERs)* (Version 2); and
- A digital report and digital archive dataset will be provided to Royal Commission on Ancient and Historic Monuments, Wales (final report only), in accordance with the *RCAHMW Guidelines for Digital Archives Version 1*. The dataset will be prepared in the format required by RCAHMW and included:
 - Photographic metadata (Microsoft Access);
 - Photographic archive (TIFF format);
 - Project Information form (Excel);
 - File Information form (Excel) – Microsoft Word report text final;
 - File Information form (Excel) – Photographic metadata (general);
 - File Information form (Excel) – Adobe PDF report final; and
 - File Information form (Excel) - Photographic metadata (detail).

De-Selected Documents

Describe the procedure for dealing with De-selected material and what specialist advice has informed this procedure.

There is no de-selected data

APPENDIX II

Gwynedd Archaeological Trust Photographic Metadata

PHOTO RECORD NUMBER	PROJECT NAME	DESCRIPTION	VIEW FROM	SCALE(S)	CREATOR	DATE	ORIGINATING ORGANISATION	PLATE
G2781_001	Shire Hall, Llangefni	General view of southern elevation of council buildings (Shire Hall) (Asset 1)	S	1x1m	Michael Sion Lynes	26/04/2023	Gwynedd Archaeological Trust	1
G2781_002	Shire Hall, Llangefni	General view of council buildings (Shire Hall), (Asset 1) from the SE	SE	1x1m	Michael Sion Lynes	26/04/2023	Gwynedd Archaeological Trust	2
G2781_003	Shire Hall, Llangefni	General view of rear of council buildings (Shire Hall), (Asset 1) from the E.	E	1x1m	Michael Sion Lynes	26/04/2023	Gwynedd Archaeological Trust	3
G2781_004	Shire Hall, Llangefni	General view of rear of council buildings (Shire Hall), (Asset 1) from ENE.	ENE	1x1m	Michael Sion Lynes	26/04/2023	Gwynedd Archaeological Trust	4
G2781_005	Shire Hall, Llangefni	General view of rear (Police station carpark) courtyard from the south.	S	N/A	Michael Sion Lynes	26/04/2023	Gwynedd Archaeological Trust	5
G2781_006	Shire Hall, Llangefni	View of development area from the NE showing grassed area	NE	1x1m	Michael Sion Lynes	26/04/2023	Gwynedd Archaeological Trust	6
G2781_007	Shire Hall, Llangefni	Angled view of modern porch leading into the rear of council building (Shire Hall) (Asset 1)	SE	1x1m	Michael Sion Lynes	26/04/2023	Gwynedd Archaeological Trust	7
G2781_008	Shire Hall, Llangefni	Angled view of modern porch and extensions at rear of council building (Shire Hall) (Asset 1)	SE	1x1m	Michael Sion Lynes	26/04/2023	Gwynedd Archaeological Trust	8
G2781_009	Shire Hall, Llangefni	View of brick built recess at southern elevation of Shire Hall (Asset 1) (street light in shot)	S	1x1m	Michael Sion Lynes	26/04/2023	Gwynedd Archaeological Trust	9
G2781_010	Shire Hall, Llangefni	View of blocked doorway at rear of Shire Hall (Asset 1)	E	1x1m	Michael Sion Lynes	26/04/2023	Gwynedd Archaeological Trust	10

PHOTO RECORD NUMBER	PROJECT NAME	DESCRIPTION	VIEW FROM	SCALE(S)	CREATOR	DATE	ORIGINATING ORGANISATION	PLATE
G2781_011	Shire Hall, Llangefni	Angled view of shire hall and development area (grassed)	SW	1x1m	Michael Sion Lynes	26/04/2023	Gwynedd Archaeological Trust	11
G2781_012	Shire Hall, Llangefni	General angled view of manhole covers within development area	WSW	N/A	Michael Sion Lynes	26/04/2023	Gwynedd Archaeological Trust	12
G2781_013	Shire Hall, Llangefni	General view showing south side of Shire Hall (Asset 1) , the chapel (Asset 3) and court (Asset 4) from the carpark	SSE	N/A	Michael Sion Lynes	26/04/2023	Gwynedd Archaeological Trust	13
G2781_014	Shire Hall, Llangefni	General view of development area showing Shire Hall (Asset 1), court (Asset 4) and chapel (Asset 3)	SE	N/A	Michael Sion Lynes	26/04/2023	Gwynedd Archaeological Trust	14
G2781_015	Shire Hall, Llangefni	Angled view of Shire Hall (Asset 1) and grass sward	SW	N/A	Michael Sion Lynes	26/04/2023	Gwynedd Archaeological Trust	15
G2781_016	Shire Hall, Llangefni	View of south half of façade of Shire Hall (Asset 2: War Memorial included)	WNW	N/A	Michael Sion Lynes	26/04/2023	Gwynedd Archaeological Trust	16
G2781_017	Shire Hall, Llangefni	View of northern half of façade of Shire Hall (Asset 2: War Memorial included)	WSW	N/A	Michael Sion Lynes	26/04/2023	Gwynedd Archaeological Trust	17
G2781_018	Shire Hall, Llangefni	View of Capel Smyrna (Asset 3) from the east	E	N/A	Michael Sion Lynes	26/04/2023	Gwynedd Archaeological Trust	18
G2781_019	Shire Hall, Llangefni	Angled view of chapel and court house (Asset 4)	E	N/A	Michael Sion Lynes	26/04/2023	Gwynedd Archaeological Trust	19
G2781_020	Shire Hall, Llangefni	Slight angled view of court house (Asset 4)	ESE	N/A	Michael Sion Lynes	26/04/2023	Gwynedd Archaeological Trust	20

PHOTO RECORD NUMBER	PROJECT NAME	DESCRIPTION	VIEW FROM	SCALE(S)	CREATOR	DATE	ORIGINATING ORGANISATION	PLATE
G2781_021	Shire Hall, Llangefni	View of war memorial (Asset 2) and front of shire hall (Asset 1)	S	N/A	Michael Sion Lynes	26/04/2023	Gwynedd Archaeological Trust	21
G2781_022	Shire Hall, Llangefni	Slightly angled view of Capel Moreia (Asset 5) from the west	W	N/A	Michael Sion Lynes	26/04/2023	Gwynedd Archaeological Trust	22
G2781_023	Shire Hall, Llangefni	Slightly angled view of Capel Moreia (Asset 5) from the northwest	NW	N/A	Michael Sion Lynes	26/04/2023	Gwynedd Archaeological Trust	23
G2781_024	Shire Hall, Llangefni	General view of police carpark to rear of Shire Hall (Asset 1) showing development area (green) through gate	NNE	N/A	Michael Sion Lynes	26/04/2023	Gwynedd Archaeological Trust	24
G2781_025	Shire Hall, Llangefni	View of rear of Shire Hall (Asset 1), taken from the bridge over the Afon Cefni in the car park, showing the development area	SE	N/A	Michael Sion Lynes	26/04/2023	Gwynedd Archaeological Trust	25

APPENDIX III

Gwynedd Archaeological Trust Historic Environment Record Statutory and Non-Statutory Assets within a 500m Buffer

Asset Number	PRN	NPRN	SITENAME	NGR	status	Status reference	Status grade	CLASS	Site type	Period	Form	Summary
1	11620	23149	Shire Hall, Llangefni	SH4591575487	Listed Building	5752	II	Civil	Shire Hall	Post Medieval	Building	1899 by O.M.Roberts & Son (Porthmadog). Basically Jacobean style with classical detail. (RCAHMW, Undated)
2	66769	424338	War Memorial, Llangefni	SH4589375517	Listed Building	20551	II	Commemorative	War Memorial	Post Medieval		A war memorial built in the 1920s to commemorate the men of the parish who fell in the First World War.
3	7778	8778	Capel Smyrna, Llangefni	SH4586275499	Listed Building	5754	II	Religious, Ritual and Funerary	Chapel	Post Medieval	Building	Smyrna Independent Chapel was built in 1844, rebuilt in 1870 and again in 1903. The present chapel, dated 1903, is built in the Classical style with a gable-entry plan, triple window and great arch. Smyrna is now Grade 2 Listed as a well-preserved early
4	11608	23133	County Court, Llangefni	SH4587075523	Listed Building	5753	II	Civil	Building	Post Medieval	Building	Circa 1860. Italianate. Single storey, 5 bay forebuilding. (RCAHMW, Undated)
5	7783	8783	Capel Moreia, Llangefni	SH4594075550	Listed Building	5751	II*	Religious, Ritual and Funerary	Chapel	Post Medieval	Building	Chapel built by R & J Williams Ltd. Bangor and opened in 1898. Renovations took place in the 1920s and 1980s. Listed Grade II*. (Huw Owen, 2012)
6	36150	407847	Melin Llangefni, Site of, Llangefni	SH4599275575		0		Industrial	Corn Mill	Post Medieval	Document	In 1975 this corn mill, close to the centre of the town, was much altered, decayed and awaiting demolition. It was a large, complex building, the oldest part a two-storey stone building with cellar, with a wheel pit on the west gable which could have ac
7	61462	308602	Doldir House, Llangefni	SH4591575583	Listed Building	18807	II	Domestic; Health and Welfare	House; Surgery	Modern		Arts and crafts style house built as a doctor's surgery in 1913. (Bowen, 2013)
8	8115	8782	Lon y Felin Chapel, Llangefni	SH46057563		0		Religious, Ritual and Funerary	Chapel	Post Medieval	Building - Roofed	
9	11623	23152	Town Hall, Llangefni	SH4595075650	Listed Building	5738	II	Civil	Building	Post Medieval	Building - Roofed	
10	11018	15601	Bull Hotel, Pen-y-bont Inn, Llangefni	SH4592075670	Listed Building	5755	II	Commercial	Building	Post Medieval	Building - Roofed	
11	12657	32548	Town Clock, Llangefni	SH4594675684	Listed Building	5739	II	Civil	Clock Tower	Post Medieval	Building - Roofed	
12	0	414211	LLANGEFNI	SH45937569				CIVIL	Town	Multiperiod	Documents	
13	66766	406103	The Market Hotel	SH4592375703	Listed Building	20549	II	Commercial	Hotel	Post Medieval	Building - Roofed	An early 20th century public house.
14	62452	0	Llangefni, Conservation Area	SH4580175712	Conservation Area	0		Unassigned	Landscape	Multiperiod		Llangefni - designated Conservation Area by Isle of Anglesey County Council. Llangefni is a small town occupying a sheltered position on the bank of the river Cefni. The town has well planned Victorian wide streets, a series of imposing public buildings. History: The nearby Tre-Garnedd Moated Site and Edward IIIs recorded corn grist mill point to the area having a Medieval history. The Bulkeleys of Porthaml and Baron Hill were both instrumental to the towns growth. From 1765 a Turnpike Road was constructed.

Asset Number	PRN	NPRN	SITENAME	NGR	status	Status reference	Status grade	CLASS	Site type	Period	Form	Summary
15	17843	0	Roman Road, Proposed, Tal y Foel to Holyhead	SH4598575689		0		TRANSPORT	Road	Roman	Document	NGR and Eastings and Northings are for the portion of the road within the G2781 study area; Roman road proposed by W. Wyn Williams Junr. (1860, 186-188). This runs along the W side of Anglesey with a detour around Malltraeth marsh. The route has been digitised in outline form (PRN 17843). Tal y Foel seems to be a possible crossing point
16	0	416926	ARCADIA CINEMA HALL, LLANGEFNI	SH4603175692				RECREATIONAL	Cinema	20th Century	Documents	
17	8114	11837	Capel Ebenezer, Bridge Street, Llangefni	SH46137568		0		Religious, Ritual and Funerary	Chapel	Post Medieval	Building - Roofed	
18	8116	11839	Mortuary Chapel, Llangefni	SH46167586		0		Religious, Ritual and Funerary	Mortuary Chapel	Post Medieval	Building - Roofed	
19	0	419108	FORMER BRITISH SCHOOL, BRIDGE STREET, LLANGEFNI	SH4634075617				EDUCATION	School	19th Century	Documents	
20	0	8781	HEN CAPEL MOREIA, LLANGEFNI	SH4639875564				RELIGIOUS RITUAL AND FUNERARY	Chapel	Post Medieval	Building	
21	2669	0	Stone Axe, Findspot, Llangefni	SH46387576		0		Object	Findspot	Prehistoric	Find Only	Polished stone axe. 12ins x 3 3/4ins found during excavation for foundations of the new Sanatorium at Llangefni. Now in possession of R. Hughes, Llanerchymedd. Mr Hughes is now dead but the axe still at the same location in the possession of R. J. Wil
22	7085	0	Flint Findspot, Ynys Cefni	SH459758		0		Object	Findspot	Prehistoric	Find Only	
23	7780	8780	Penuel, Llangefni	SH45837582		0		Religious, Ritual and Funerary	Nonconformist Chapel	Post Medieval	Building - Roofed	Two storey Baptist chapel built 1897 in classical renaissance style in memory of Christmas Evans, to replace original chapel at Cildwrn, Llangefni (NPRN 8779). Pitched slate roof. West front of three bays divided by tuscan style pilasters with projectin
24	8113	0	Capel, Llangefni	SH45847583		0		Religious, Ritual and Funerary	Nonconformist Chapel	Post Medieval		

Asset Number	PRN	NPRN	SITENAME	NGR	status	Status reference	Status grade	CLASS	Site type	Period	Form	Summary
25	2684	96605	Plas Llangefni (C16th House), Site of, Llangefni	SH46007602		0		Domestic	House	Post Medieval	Document	Plas Llangefni, house on north edge of town, built circa 1540/50 by William Bulkeley. There is a probable C17th addition. Plas Llangefni was demolished in 1944/5 and four houses are now on the site.
26	66767	0	Gates and arch to Church of St. Cyngar	SH4585075924	Listed Building	20548	II	Religious, Ritual and Funerary	Gate	Post Medieval	Other Structure	Gates and arch dated 1890.
27	93891	0	Buildings, Site of, South of St. Cyngars	SH4583875900		0		UNASSIGNED	Building	Post Medieval	Documents	Buildings south of St. Cyngars in 1812 map (Summary provided by Archaeology Wales Ltd).
28	2673	0	Inscribed Stone, Llangefni Church	SH45817592		0		Religious, Ritual and Funerary	Inscribed Stone	Early Medieval	Other Structure	Small structures located south of St. Cyngars church, now a car park (Rovira, Weaver & Bagshaw, 2019). Roughly squared slab with band of incised zigzag pattern above a latin inscription in Roman capitals: CVLIDORI/IACIT/ETORVVITE/MYLIER/SECUNDI Lines 3 and 4 represent a later insertion. Further references to this stone: Found in the old church,
29	7010	201	St Cyngar's, Llangefni Parish Church, Llangefni	SH4580375925	Listed Building	5410	II	Religious, Ritual and Funerary	Church	Medieval;Post Medieval	Building - Roofed	Llangefni parish church is dedicated to St Cyngar and is located in the diocese of Bangor. The present church was built between 1824 and 1847 to the west of the medieval church it replaced. The medieval church was listed in the Norwich taxation. Church of St. Cyngar, modern. Old church demolished 1824. Water-stoup of similar stone as the one in Llanfairynghornwy , of smaller dimension
30	2672	0	Church, Site of, Llangefni	SH4580375925		0		Religious, Ritual and Funerary	Church	Medieval	Documents	The site of a medieval church listed in the Norwich taxation of 1254. For St. Cyngar's Church, Llangefni please see PRN7010. The form and date of the medieval church is not known, and no plans or descriptions have been found. It was located to the east of the present church and was demolished in 1824 (Davidson 1998).
31	56050	265427	Rectory, St Cyngar's Church	SH4576175928		0		Domestic	Vicarage	Post Medieval	Building - Roofed	Site identified using early Ordnance Survey Maps (McGuiness, 2014)
32	26018	0	Structure, Possible, North-West of St. Cyngar's Church	SH45727596		0		Monument ;Unassigned	Enclosure; Structure	Unknown		A structure or enclosure identified on the 1st Edition OS Map.
33	26017	0	Building, North-West of St. Cyngar's Church	SH45697594		0		Unassigned	Building	Unknown		A building identified on the 1st Edition OS Map.

Asset Number	PRN	NPRN	SITENAME	NGR	status	Status reference	Status grade	CLASS	Site type	Period	Form	Summary
34	32077	0	Ffynnon Cyngar, Llangefni	SH45747588		0		Religious, Ritual and Funerary	Holy Well	Unknown		The well has now been restored, none of the well's traditions are known. (Parry, Smith and Hopewell, 2011)
35	56049	0	Weir, Llyn Bach, SW of St Cyngar's Chrch	SH4569175856		0		Water Supply and Drainage	Weir	Post Medieval	Other Structure	Site identified using early Ordnance Survey Maps (McGuinness, 2014)
36	26022	0	Weir, South-West of St. Cyngar's Church	SH45697585		0		Industrial	Weir	Unknown		Weir identified on the 2nd Edition OS Map.
37	26019	0	Footbridge, South-West of St. Cyngar's Church	SH45667587		0		Transport	Footbridge	Unknown		A footbridge identified on the 1st Edition OS Map.
38	93897	0	Winding Pillar, Llangefni	SH4565175881		0		UNASSIGNED	Gate Post	Post Medieval	Other Structure	A cast-iron winding straining pillar and fixture with the inscription ΓÇÿFrancis Morton & coΓÇÖs Liverpool PatentΓÇÖ.(Rovira, Weaver & Bagshaw, 2019).
39	26020	0	Weir, East of St. Cyngar's Church	SH45587591		0		Industrial	Weir	Unknown	Other Structure	Weir, identified on the 1st Edition OS Map.
40	66768	413807	Former National School and Schoolhouse, Llangefni	SH4562775825	Listed Building	20550	II	Education	School	Post Medieval	Building - Roofed	National school and schoolhouse built in 1851-2 to replace the earlier school of 1818.
41	26023	0	Cattle Pens, South-West of St. Cyngar's Church	SH45697581		0		Agriculture and Subsistence	Pen	Unknown		Cattle pens identified on the 2nd Edition OS Map.
42	93894	0	Train Station, Former, Llangefni	SH4568475784		0		TRANSPORT	Railway Station	Post Medieval		A Structure which was the train station at Llangefni, servicing the Anglesey Central Railway.(Rovira, Weaver & Bagshaw, 2019).
43	71372	419414	County School War Memorial, Llangefni	SH4552275823	Listed Building	87801	II	COMMEMORATIVE	War Memorial	Modern	Other Structure	A county school war memorial.
44	0	417687	LLANGEFNI FORMER INTERMEDIATE SCHOOL	SH4550475794				EDUCATION	School	20th Century	Documents	
45	76591	0	Farm building, Fron	SH4572075334		0		AGRICULTURE AND SUBSISTENCE	Farm Building	Post Medieval	Building - Roofed	Extant traditional farm building shown on 2nd Edition OS 25 inch map (Summary provided by Gwynedd Archaeological Trust).
46	76590	0	Farm building, Fron	SH4572675333		0		AGRICULTURE AND SUBSISTENCE	Farm Building	Post Medieval	Building - Roofed	Extant traditional farm building shown on 2nd Edition OS 25 inch map (Summary provided by Gwynedd Archaeological Trust).

Asset Number	PRN	NPRN	SITENAME	NGR	status	Status reference	Status grade	CLASS	Site type	Period	Form	Summary
47	36151	265370	Y Fron House and Garden, Llangefni	SH4572875317		0		Domestic	House	Post Medieval	Building - Roofed	The house at y Fron was built in 1812 by the rector, an act commemorated by a plaque on the southern gable of the house, lettered 'H H 1812'. Hughes died in 1828, when his household furniture, items of husbandry and farming stock were offered for sale.
48	2680	0	Cist Burials, Possible Site of, Llangefni	SH45657531		0		Religious, Ritual and Funerary	Cist Grave Cemetery	Early Medieval	Document	About 30 graves comprising stone ends and sides (cists) some covered over and containing human bones were found (circa 1829). When demolished a boundary hedge between Glan Hwfa farm and Fron in the parish of Llangefni. There were also detached parts of
49	76589	0	Farm building, Fron	SH4559775290		0		AGRICULTURE AND SUBSISTENCE	Farm Building	Post Medieval	Building - Roofed	Extant traditional farm building shown on 2nd Edition OS 25 inch map (Summary provided by Gwynedd Archaeological Trust).
50	76588	0	Farm building, Fron	SH4559375279		0		AGRICULTURE AND SUBSISTENCE	Farm Building	Post Medieval	Building - Roofed	Extant traditional farm building shown on 2nd Edition OS 25 inch map (Summary provided by Gwynedd Archaeological Trust).
51	76587	0	Farm building, Fron	SH4558875271		0		AGRICULTURE AND SUBSISTENCE	Farm Building	Post Medieval	Building - Roofed	Extant traditional farm building shown on 2nd Edition OS 25 inch map (Summary provided by Gwynedd Archaeological Trust).
52	30905	0	Outbuildings, Y Fron, Llangefni	SH45597526		0		Agriculture and Subsistence	Farmstead; Outbuilding	Post Medieval	Building	The buildings comprise two ranges around a triangular site, and a separate free standing mill (PRN 30873). They are not shown on any map before 1887 but it is likely that they came into being between 1851 and 1861. One range is orientated SW to
53	76586	0	Farm building, Fron	SH4560075257		0		AGRICULTURE AND SUBSISTENCE	Farm Building	Post Medieval	Building - Roofed	Extant traditional farm building shown on 2nd Edition OS 25 inch map (Summary provided by Gwynedd Archaeological Trust).
54	76585	0	Farm building, Fron	SH4560975256		0		AGRICULTURE AND SUBSISTENCE	Farm Building	Post Medieval	Building - Roofed	Extant traditional farm building shown on 2nd Edition OS 25 inch map (Summary provided by Gwynedd Archaeological Trust).
55	76584	0	Farm building, Fron	SH4561575256		0		AGRICULTURE AND SUBSISTENCE	Farm Building	Post Medieval	Building - Roofed	Extant traditional farm building shown on 2nd Edition OS 25 inch map (Summary provided by Gwynedd Archaeological Trust).
56	76583	0	Farm building, Fron	SH4561475252		0		AGRICULTURE AND SUBSISTENCE	Farm Building	Post Medieval	Building - Roofed	Extant traditional farm building shown on 2nd Edition OS 25 inch map (Summary provided by Gwynedd Archaeological Trust).
57	76581	0	Farm building, Fron	SH4563575251		0		AGRICULTURE AND SUBSISTENCE	Farm Building	Post Medieval	Building - Roofed	Extant traditional farm building shown on 2nd Edition OS 25 inch map (Summary provided by Gwynedd Archaeological Trust).
58	30873	420899	Melin Fron, Llangefni	SH4563175247		0		Industrial	Watermill	Medieval	Building	It appears likely that the mill dates from between 1851 and 1861 and was primarily a farm mill i.e. not a commercial operation. Though there is a reference to it being used to grind oats for horses, there is now no evidence that it was used to drive mil
59	61461	265114	Bryn-arfon House and Garden, Llangefni	SH4573575252		0		Domestic	House	Post Medieval		House and garden depicted on historic OS mapping. (Bowen, 2013)

Asset Number	PRN	NPRN	SITENAME	NGR	status	Status reference	Status grade	CLASS	Site type	Period	Form	Summary
60	61460	265374	Glanaber House and Garden, Llangefni	SH4574175201		0		Domestic	House	Post Medieval		House and garden depicted on historic OS mapping. (Bowen, 2013)
61	32799	0	Archaeological Features, Hedd yr Ynys, Llangefni	SH45657516		0		Domestic; Unassigned	Archaeological Feature; Settlement	Roman; Unknown		At least 30 cist graves (PRN2680) some containing human bone were disturbed during the removal of a boundary hedge at Fron Llangefni in 1829. The precise location is no longer known. The description of the site suggests an extensive cemetery possibly of
62	69893	0	Drain, Pen-yr-Orsedd	SH4614675239		0		Water Supply and Drainage	Drain	Post Medieval		A post medieval stone-filled drain. Orientated East - West and located at the Eastern end of the site. The drain has been interpreted as a redundant agricultural field drain (Owen & Evans 2018).

APPENDIX IV

Gwynedd Archaeological Trust Selection Strategy Final

G2781_Shirehall_Llangefni

02/05/2023 v2.0

Selection Strategy

Project Information

Project Management

Project Manager	John Roberts john.roberts@heneb.co.uk	
Archaeological Archive Manager	John Roberts john.roberts@heneb.co.uk	
Organisation	Gwynedd Archaeological Trust	
Stakeholders		Date Contacted
Collecting Institution(s)	GAT Historic Environment Record	20/04/2023
	RCAHMW	On completion of Project Archive
Project Lead / Project Assurance	Gwynedd Archaeological Planning Services	n/a
Landowner / Developer	Chief Properties Ltd	n/a

Resources

Resources required

Describe the resources required to implement this Selection Strategy, particularly if unusual resources are required.

No unusual resources required outside of GAT normal operating equipment and personnel.

Context

The full aims and objectives of this project are detailed in the project specific WSI.

Gwynedd Archaeological Trust Contracts Section (GAT) has been asked by Russell-Hughes cyf. to prepare an archaeological desk-based assessment at Shire Hall, Llangefni (SH 45908 75525; postcode LL77 7ET; (Figure 01). The proposed development includes the erection of seven residential units at the rear of the Grade II listed building at Llangefni under planning reference FPL/2023/41 (Figure 02, 03, 04, 05).

Source: Gwynedd Archaeological Trust. 2023. Shire Hall, Llangefni Written Scheme of Investigation for Archaeological Desk Based Assessment. Prepared for Russell-Hughes Cyf. April 2023. Project G2781.

1 – Digital Data

Stakeholders

Name the individual(s) responsible for the Digital Data Selection decisions (i.e. Archaeological Archive Manager, Project Manager, Collections Curator).

John Roberts (GAT Principal Archaeologist)

Selection

Location of Data Management Plan (DMP)

Selection of digital data elements should be considered in your project's DMP. For the purpose of the Selection Strategy, you can either copy the selection section of your DMP below, or attach it as an appendix to this document. Please indicate here if the DMP is attached.

All digital data has been collected, stored and selected in lines with the Gwynedd Archaeological Trust (GAT) Data Management Plan located on GAT's servers (available on request).

Following the completion of the fieldwork, a working project archive has been created based on following task list;

1. Pro-formas: all cross referenced and complete;
2. Photographic Metadata: completed in *Microsoft Access* and cross-referenced with all pro-formas;
3. Survey data: downloaded using a Computer Aided Design package;
4. Sections: all cross referenced and complete;
5. Plans: all cross referenced and complete;
6. Context register: quantified and register completed.

All relevant site archive data has been added to a digital project register specific to this project, which has been prepared in *Microsoft Excel*. This data has been used as the basis for the physical and digital dataset archives. Information from these has been used to compile the project report. The physical archive has been stored in a designated project folder and the location confirmed in the Trust project database; the digital dataset has been stored on a dedicated Trust server, with the location confirmed in the Trust project database via a specific hyperlink. External datasets for the HER and RCAHMW are as defined in the dissemination strategy below. De-selected digital data has been confirmed in an updated digital management plan appended to the final report

De-Selected Digital Data

There is no de-selected data

2 – Documents

Stakeholders

Name the individual(s) responsible for the Documents Selection decisions (i.e. Archaeological Archive Manager, Project Manager, Repository Representative).

John Roberts – Principal Archaeologist, Gwynedd Archaeological Trust;
Sean Derby – Historic Environment Record, Gwynedd Archaeological Trust;
Gareth Edwards, *Head of Knowledge and Understanding, RCAHMW*

Selection

- A digital report has been provided to the regional Historic Environment Record; this has been submitted along with a digital dataset comprising an Event PRN summary in accordance with the required standards set out in *Guidance for the Submission of Data to the Welsh Historic Environment Records (HERs)* (Version 2); and
- A digital report and digital archive dataset have been provided to Royal Commission on Ancient and Historic Monuments, Wales (final report only), in accordance with the *RCAHMW Guidelines for Digital Archives Version 1*. The dataset has been prepared in the format required by RCAHMW and included:
 - Photographic metadata (Microsoft Access);
 - Photographic archive (TIFF format);
 - Project Information form (Excel);
 - File Information form (Excel) – Microsoft Word report text final;
 - File Information form (Excel) – Photographic metadata (general);
 - File Information form (Excel) – Adobe PDF report final; and
 - File Information form (Excel) - Photographic metadata (detail).

De-Selected Documents

Describe the procedure for dealing with De-selected material and what specialist advice has informed this procedure.

There is no de-selected data



Gwynedd Archaeological Trust
Ymddiriedolaeth Archaeolegol Gwynedd

Craig Beuno, Ffordd y Garth, Bangor, Gwynedd. LL57 2RT
Ffon: 01248 352535. Ffacs: 01248 370925. email: gat@heneb.co.uk

