

HILLGROVE, BANGOR, GWYNEDD

Arolwg Ffotograffig / Photographic Survey



Ymddiriedolaeth Archaeolegol Gwynedd
Gwynedd Archaeological Trust

HILLGROVE, BANGOR, GWYNEDD

Arolwg Ffotograffig / Photographic Survey

Yr Amgylchedd Hanesyddol yn Cofnodi Prif Gyfeirnod: 46519 /
Historic Environment Record Event Primary Reference Number: 46519

Prosiect Rhif / Project No. G2762

Adroddiad Rhif / Report No. 1679

Wedi'i baratoi ar gyfer / Prepared for: Carlton (North Wales) Limited on behalf of North Wales
Recovery Communities

Ionawr 2023 / January 2023

Ysgrifenydd / Written by: Bethan Jones & Jessie Baumgardner

Darlun blaen clawr: Golygfa ochr o dŷ o'r 19eg ganrif (cyfeirnod Archif: G2762_02) /
Front cover image: Oblique view of 19th century house (archive reference: G2762_02)


Cyhoeddwyd gan Ymddiriedolaeth Archaeolegol Gwynedd
Ymddiriedolaeth Archaeolegol Gwynedd
Craig Beuno, Ffordd y Garth,
Bangor, Gwynedd, LL57 2RT

Published by Gwynedd Archaeological Trust
Gwynedd Archaeological Trust
Craig Beuno, Garth Road,
Bangor, Gwynedd, LL57 2RT



Cadeirydd / Chair David Elis-Williams MA(Oxon), MSc, CPFA
Prif Archaeolegydd/Chief Archaeologist - Andrew Davidson, B.A., MCIfA

Mae Ymddiriedolaeth Archaeolegol Gwynedd yn Gwmni Cyfyngedig (Ref Cof. 1180515) ac yn Elusen (Rhif Cof. 508849)
Gwynedd Archaeological Trust is both a Limited Company (Reg No. 1180515) and a Charity (reg No. 508849)

Approvals Table				
	Role	Printed Name	Signature	Date
Originated by	Document Author	Bethan Jones		11/01/2023
Reviewed by	Document Reviewer	John Roberts		12/01/2023
Approved by	Principal Archaeologist	John Roberts		12/01/2023

Revision History			
Rev No.	Summary of Changes	Ref Section	Purpose of Issue

CONTENTS

CRYNHODEB ANHECHNEGOL	3
NON-TECHNICAL SUMMARY	3
1 INTRODUCTION	4
2 METHOD STATEMENT	6
2.1 Introduction.....	6
2.2 Photographic Survey	6
2.3 Written Record.....	7
2.4 Drawn Record	7
2.5 Dissemination & Archiving	8
3 RESULTS.....	9
3.1 Introduction.....	9
3.2 Building Description	10
3.2.1 Exterior – 19 th Century House.....	10
3.2.2 Exterior - Early 20 th Century Additions & School Buildings.....	10
3.2.3 Interior – 19 th Century House.....	11
3.2.3.1 Ground floor – Rooms 1–15.....	11
3.2.3.2 First floor – Rooms 16-32.....	12
3.2.3.3 Second floor – Rooms 33 and 34	12
3.2.3.4 Basement - Rooms 35-37	12
3.2.4 Interior – detached early 20 th century buildings.....	13
4 CONCLUSION.....	14
5 SOURCES CONSULTED	15
Appendix I	16
Gwynedd Archaeological Trust Written Scheme of Investigation	16
Appendix II	17
Gwynedd Archaeological Trust Photographic Metadata	17
Appendix III	18
Gwynedd Archaeological Trust Selection Strategy	18

FIGURES

Figure 01: Reproduction of Dewis Architecture Drawing No. D907.04 with Gwynedd Archaeological Trust amendments detailing location and orientation of exterior photographic archive images. Not to scale.

Figure 02: Partial reproduction of Dewis Architecture Drawing No. D907.03 with Gwynedd Archaeological Trust amendments detailing location and orientation of interior photographic archive images (ground floor and first floor only). Not to scale.

Figure 03: Plan detailing location and orientation of interior photographic archive images (basement and second floor attic only). Not to scale.

Figure 04: Partial reproduction of Dewis Architecture Drawing No. D907.03 with Gwynedd Archaeological Trust amendments detailing location and orientation of interior photographic archive images (ground floor only). Not to scale.

PLATES

Plate 1: View of N elevation of 19th C house; scale 1m; view from NE (archive reference: G2762_01).

Plate 2: Oblique view of 19th C house; scale 1m; view from N (archive reference: G2762_02).

Plate 3: Oblique view of early 20th C extension / W elevation of 19th C house; scale 1m; view from NW (archive reference: G2762_03).

Plate 4: Oblique view of W elevation / 1960's classrooms; scale 1m; view from N (archive reference: G2762_04).

Plate 5: View of W elevation of classrooms; scale 1m; view from NW (archive reference: G2762_05).

Plate 6: View of post 1960's classrooms w/ view of early 20th C 'bungalow'; scale 1m; view from SW (archive reference: G2762_06).

Plate 7: View of S elevation showing school buildings; scale 1m; view from S (archive reference: G2762_07).

Plate 8: Oblique view of school buildings including early 20th C 'bungalow'; scale not used; view from S (archive reference: G2762_08).

Plate 9: View of school buildings; scale 1m; view from S (archive reference: G2762_09).

Plate 10: Oblique view of school buildings ; scale 1m; view from S (archive reference: G2762_10).

Plate 11: Oblique view of school buildings w/ early 20th C 'bungalow'; scale 1m; view from E (archive reference: G2762_11).

Plate 12: View of archway in school grounds; scale 1m; view from N (archive reference: G2762_12).

Plate 13: Oblique view of E elevation of 19th C house w/ extension; scale 1m; view from S (archive reference: G2762_13).

Plate 14: Oblique view of early 20th C building incorporated into school; scale 1m; view from NE (archive reference: G2762_14).

Plate 15: Oblique view of E elevation of 19th C house; scale 1m; view from S (archive reference: G2762_15).

Plate 16: View of school buildings adjacent to 19th C house; scale 1m; view from E (archive reference: G2762_16).

Plate 17: View of courtyard area; scale 1m; view from E (archive reference: G2762_17).

Plate 18: View of courtyard area; scale 1m; view from W (archive reference: G2762_18).

Plate 19: Oblique view of 19th C house w/ walled garden; scale not used; view from N (archive reference: G2762_19).

Plate 20: Oblique view of E elevation w/ schoolyard; scale not used; view from E (archive reference: G2762_20).

Plate 21: View of porch w/ tile floor; scale 1m; view from NE (archive reference: G2762_21).

Plate 22: View into room 1 from entrance ; scale 1m; view from NE (archive reference: G2762_22).

Plate 23: View of store; scale 1m; view from W (archive reference: G2762_23).

Plate 24: View of glass door entrance into hallway; scale 1m; view from N (archive reference: G2762_24).

Plate 25: View of hallway; scale 1m; view from SW (archive reference: G2762_25).

Plate 26: View of cupboard within hall/alcove; scale 1m; view from W (archive reference: G2762_26).

Plate 27: View of staircase; scale 1m; view from W (archive reference: G2762_27).

Plate 28: View of hallway (ceiling detail); scale 1m; view from S (archive reference: G2762_28).

Plate 29: View of entrance into lounge; scale 1m; view from NW (archive reference: G2762_29).

Plate 30: View of room 3 from the W; scale 1m; view from W (archive reference: G2762_30).

Plate 31: View of windows in lounge; scale 1m; view from S (archive reference: G2762_31).

Plate 32: View of seating area in lounge (3); scale 1m; view from S (archive reference: G2762_32).

Plate 33: View of gas fireplace and stained glass window; scale 1m; view from SE (archive reference: G2762_33).

Plate 34: View of window and gas fireplace; scale 1m; view from SE (archive reference: G2762_34).

Plate 35: View of window in library (4); scale 1m; view from NE (archive reference: G2762_35).

Plate 36: View of bookcases and former fireplace; scale 1m; view from NW (archive reference: G2762_36).

Plate 37: View of entrance into room 4 w/ map wall feature; scale 1m; view from SW (archive reference: G2762_37).

Plate 37: View of entrance into room 4 w/ map wall feature; scale 1m; view from SW (archive reference: G2762_37).

Plate 38: View of room 4 from SE; scale 1m; view from SE (archive reference: G2762_38).

Plate 39: View of windows and outside exit in room 5; scale 1m; view from NE (archive reference: G2762_39).

Plate 40: View of exit to outdoors; scale 1m; view from NW (archive reference: G2762_40).

Plate 41: View of fireplace and entrance into study; scale 1m; view from SW (archive reference: G2762_41).

Plate 42: View of fireplace and window; scale 1m; view from SE (archive reference: G2762_42).

Plate 43: View of fireplace; scale 1m; view from S (archive reference: G2762_43).

Plate 44: View of window alcove; scale 1m; view from E (archive reference: G2762_44).

Plate 45: View of corridor 6 w/ servant bells; scale 1m; view from E (archive reference: G2762_45).

Plate 46: View of corridor 6 and 8; scale 1m; view from NW (archive reference: G2762_46).

Plate 47: View of W.C.; scale 1m; view from N (archive reference: G2762_47).

Plate 48: View of toilet (7); scale 1m; view from N (archive reference: G2762_48).

Plate 49: View of room 10 (laundry); scale 1m; view from SE (archive reference: G2762_49).

Plate 50: View of built-in cupboard in room 10; scale 1m; view from NE (archive reference: G2762_50).

Plate 51: View of corridor (8); scale 1m; view from W (archive reference: G2762_51).

Plate 52: View of corridor (8) and staircase; scale 1m; view from NW (archive reference: G2762_52).

Plate 53: View into storage (9); scale 1m; view from E (archive reference: G2762_53).

Plate 54: View of inglenook and glass doors in room 11; scale 1m; view from SW (archive reference: G2762_54).

Plate 55: View of storage cupboard and inglenook; scale 1m; view from SE (archive reference: G2762_55).

Plate 56: View of entrance into room 11; scale 1m; view from NE (archive reference: G2762_56).

Plate 57: View of glass doors leading into walled garden; scale 1m; view from NW (archive reference: G2762_57).

Plate 58: View of kitchen; scale 1m; view from SE (archive reference: G2762_58).

Plate 59: View of entrance to kitchen w/ window and arched inglenook; scale 1m; view from NW (archive reference: G2762_59).

Plate 60: View of taps and W.C.'s; scale 1m; view from N (archive reference: G2762_60).

Plate 61: View of urinals; scale 1m; view from NW (archive reference: G2762_61).

Plate 62: Possible former showers; scale 1m; view from SW (archive reference: G2762_62).

Plate 63: Tap room showing original plaster/paint work; scale 1m; view from SW (archive reference: G2762_63).

Plate 64: View of entrance into toilets; scale 1m; view from S (archive reference: G2762_64).

Plate 65: View of store room 14; scale 1m; view from NE (archive reference: G2762_65).

Plate 66: View of windows; scale 1m; view from SE (archive reference: G2762_66).

Plate 67: View of entrance; scale 1m; view from SW (archive reference: G2762_67).

Plate 68: Staircase leading into landing (16); scale 1m; view from N (archive reference: G2762_68).

Plate 69: View of landing (16) showing bannister and doors; scale 1m; view from S (archive reference: G2762_69).

Plate 70: View of landing (16) showing bannister and doors; scale 1m; view from N (archive reference: G2762_70).

Plate 71: View into bedroom (17); scale 1m; view from W (archive reference: G2762_71).

Plate 72: View of window; scale 1m; view from SW (archive reference: G2762_72).

Plate 73: View of entrance and boiler cupboard; scale 1m; view from SE (archive reference: G2762_73).

Plate 74: View of window and square alcove; scale 1m; view from NE (archive reference: G2762_74).

Plate 75: View into bedroom (18); scale 1m; view from W (archive reference: G2762_75).

Plate 76: View of entrance and fireplace; scale 1m; view from E (archive reference: G2762_76).

Plate 77: View of window; scale 1m; view from W (archive reference: G2762_77).

Plate 78: View of fireplace and built-in bookshelf; scale 1m; view from SW (archive reference: G2762_78).

Plate 79: View into room 19; scale 1m; view from SW (archive reference: G2762_79).

Plate 80: View of entrance into room 19; scale 1m; view from NE (archive reference: G2762_80).

Plate 81: View of entrance into bedroom 20; scale 1m; view from N (archive reference: G2762_81).

Plate 82: Blocked up fireplace in bedroom 20; scale 1m; view from E (archive reference: G2762_82).

Plate 83: View of fireplace and turret windows; scale 1m; view from S (archive reference: G2762_83).

Plate 84: Close-up view of turret windows; scale 1m; view from S (archive reference: G2762_84).

Plate 85: Entrance into bedroom and fireplace; scale 1m; view from N (archive reference: G2762_85).

Plate 86: View of window, desk area and fireplace; scale 1m; view from E (archive reference: G2762_86).

Plate 87: View of windows; scale 1m; view from N (archive reference: G2762_87).

Plate 88: View of fireplace; scale 1m; view from S (archive reference: G2762_88).

Plate 89: View of window and fireplace; scale 1m; view from S (archive reference: G2762_89).

Plate 90: View of en-suite; scale not used; view from NW (archive reference: G2762_90).

Plate 91: View of corridor (23); scale 1m; view from W (archive reference: G2762_91).

Plate 92: View of corridor (23); scale 1m; view from E (archive reference: G2762_92).

Plate 93: View of bathroom (24); scale 1m; view from N (archive reference: G2762_93).

Plate 94: View of bathroom (24); scale 1m; view from W (archive reference: G2762_94).

Plate 95: View of shower; scale 1m; view from E (archive reference: G2762_95).

Plate 96: View into bathroom; scale 1m; view from N (archive reference: G2762_96).

Plate 97: View of room 25 (Storage); scale 1m; view from N (archive reference: G2762_97).

Plate 98: View of corridor (26); scale 1m; view from N (archive reference: G2762_98).

Plate 99: View of corridor (26); scale 1m; view from S (archive reference: G2762_99).

Plate 100: View of window and sink; scale 1m; view from N (archive reference: G2762_100).

Plate 101: View of storage ; scale 1m; view from W (archive reference: G2762_101).

Plate 102: View of entrance ; scale 1m; view from S (archive reference: G2762_102).

Plate 103: View of storage cupboard (28); scale 1m; view from S (archive reference: G2762_103).

Plate 104: View of W.C. (29); scale 1m; view from W (archive reference: G2762_104).

Plate 105: View of W.C. (30); scale 1m; view from W (archive reference: G2762_105).

Plate 106: View of window; scale 1m; view from S (archive reference: G2762_106).

Plate 107: View of door; scale 1m; view from N (archive reference: G2762_107).

Plate 108: View of ceiling beams in room 32; scale 1m; view from E (archive reference: G2762_108).

Plate 109: View of entrance to room 32; scale 1m; view from W (archive reference: G2762_109).

Plate 110: View of W window; scale 1m; view from S (archive reference: G2762_110).

Plate 111: View of E window; scale not used; view from N (archive reference: G2762_111).

Plate 112: View of staircase; scale 1m; view from S (archive reference: G2762_112).

Plate 113: View into bedroom 33 and window; scale 1m; view from W (archive reference: G2762_113).

Plate 114: View of entrance and former fireplace; scale 1m; view from S (archive reference: G2762_114).

Plate 115: View of entrance into loft area/attic; scale 1m; view from SE (archive reference: G2762_115).

Plate 116: View of attic (34); scale 1m; view from E (archive reference: G2762_116).

Plate 117: View of door into attic; scale 1m; view from W (archive reference: G2762_117).

Plate 118: View up stairs leading into basement; scale 1m; view from N (archive reference: G2762_118).

Plate 119: View of corridor (basement); scale 1m; view from SE (archive reference: G2762_119).

Plate 120: View of 'workshop' room (basement; scale 1m; view from S (archive reference: G2762_120).

Plate 121: Door of workshop; scale 1m; view from N (archive reference: G2762_121).

Plate 122: View of alcove in workshop; scale 1m; view from W (archive reference: G2762_122).

Plate 123: View of room 37 in basement; scale 1m; view from SE (archive reference: G2762_123).

Plate 124: View of worktop area and blocked window; scale 1m; view from NE (archive reference: G2762_124).

Plate 125: View of door and worktop areas; scale 1m; view from N (archive reference: G2762_125).

Plate 126: View of worktop areas and former window; scale 1m; view from SW (archive reference: G2762_126).

Plate 127: View of early 20th C room classed as main hall - entrance; scale 1m; view from SW (archive reference: G2762_127).

Plate 128: View of 'main hall'; scale 1m; view from NE (archive reference: G2762_128).

Plate 129: Classroom within early 20th C 'bungalow' building; scale 1m; view from E (archive reference: G2762_129).

Plate 130: Classroom within early 20th C 'bungalow' building; scale not used; view from NW (archive reference: G2762_130).

CRYNHODEB ANHECHNEGOL

Yn 2022, comisiynwyd Ymddiriedolaeth Archeolegol Gwynedd gan Carlton (Gogledd Cymru) Cyfyngedig ar ran Cymunedau Adfer Gogledd Cymru i ymgymryd arolwg ffotograffig, yn flaenorol i ailddatblygiad o'r cyn Ysgol Hillgrove ar Lon Ffriddoedd, Bangor. Mae'r cyfadeiladau ysgol wedi ei chyfansoddi o dŷ ystâd 19eg ganrif (adnabod yn gynt fel Llwyn Eithin), gydag ychwanegiad eang cynlluniedig to gwastad ei adeiledig o amgylch adeiladau bythynnod ysbyty 20fed ganrif gynnar, roedd mewn defnydd yn ystod y rhyfel byd gyntaf fel rhan o Ysbytyau Bythynnod Penrhyn. Roedd yr arolwg ffotograffig yn cynnwys 130 o ddelweddau a oedd yn cynnwys golygfeydd allanol a mewnol o'r holl weddluniau ac ystafelloedd hygyrch.

NON-TECHNICAL SUMMARY

In 2023 Gwynedd Archaeological Trust was commissioned by Carlton (North Wales) Limited on behalf of North Wales Recovery Communities to undertake a photographic survey prior to the re-development of the former Hillgrove School on Ffriddoedd Road, Bangor. The school complex is comprised of a 19th century estate house (previously known as Llwyn Eithin), with extensive flat roofed prefabricated mid-20th century additions constructed around early 20th century cottage hospital buildings, which were in use during first world war as part of Penrhyn Cottage Hospitals. The photographic survey comprised 130 images, which included exterior and internal views of all elevations and accessible rooms.

1 INTRODUCTION

Gwynedd Archaeological Trust (GAT) was commissioned by *Carlton (North Wales) Limited on behalf of North Wales Recovery Communities* to undertake archaeological mitigation prior to the re-development of the former Hillgrove School on Ffriddoedd Road Bangor, Gwynedd, LL57 2TW (NGR SH 57137 71825). The school complex is comprised of a high-pitched roof two-storey 19th century house (formerly known as Llwyn Eithin) with extensive additions that date from the latter half of the 20th century). The development is being undertaken as part of planning application C22/0662/11/LL and Condition 5.

The archaeological mitigation has been undertaken in accordance with these requirements and will be commensurate to a Photographic Survey as defined in *Understanding Historic Buildings: A guide to good recording practice* (Historic England, 2016). This Photographic Survey provides a very full visual record, but without a written or drawn survey at a comparable level of detail.

The photographic survey of Hillgrove was undertaken on 5th January 2023 and all work was planned, managed and undertaken by GAT in accordance with the following standards and guidance:

- Guidance for the Submission of Data to the Welsh Historic Environment Records (HERs) Version 2 (The Welsh Archaeological Trusts, 2022);
- Guidelines for digital archives (Royal Commission on Ancient and Historic Monuments of Wales, 2015).
- Management of Archaeological Projects (English Heritage, 1991);
- Management of Research Projects in the Historic Environment: The MoRPHE Project Managers' Guide (Historic England, 2015);
- Standard and Guidance for the Archaeological Investigation and Recording of Standing Buildings or Structures (Chartered Institute for Archaeologists, 2020);
- Standard and guidance for the collection, documentation, conservation and research of archaeological materials (Chartered Institute for Archaeologists, 2020); and
- Understanding Historic Buildings: A Guide to Good Recording Practice (Historic England, 2016).

The archaeological mitigation was monitored by the Gwynedd Archaeological Planning Service (GAPS) and undertaken in accordance with an approved written scheme of investigation (cf. [Appendix I](#)). In line with the GAPS Environment Record (HER)

requirements, the HER was contacted at the onset of the project to ensure that any data arising was formatted in a manner suitable for accession to the HER and followed the guidance set out in *Guidance for the Submission of Data to the Welsh Historic Environment Records (HERs)* (The Welsh Archaeological Trusts, 2022).

The HER enquiry number for this project is GATHER1769 and the Event Primary Reference Number is 46519.

2 METHOD STATEMENT

2.1 Introduction

The archaeological mitigation was undertaken as a Photographic Survey, as defined by *Understanding Historic Buildings: A Guide to Good Recording Practice* (Historic England, 2016). A photographic survey provides a very full visual record, but without a written or drawn survey at a comparable level of detail. A comprehensive photographic survey is called for when recording a building for which there is no need for detailed analysis. It is also appropriate for recording a building of well-known type which is under threat, but where existing documentation is in other respects adequate, or when for some other reason drawings and historical analysis are not required. The Photographic Survey incorporated the exterior and interior of the original core of the 19th and early 20th century building(s) and the exterior of the range of buildings that are post-1960s.

2.2 Photographic Survey

The Photographic Survey included the following:

- General views of the building complex within the wider setting/landscape.
- The building's external appearance, incorporating series of oblique views showing all external elevations, to give an overall impression of its size, shape and immediate setting.
- The overall appearance of the principal rooms and circulation areas.
- Any external or internal detail, structural or decorative, that was thought relevant to the buildings' design, development and use, with a graduated metric scale used where appropriate.
- A photographic register detailing the photo number, the location and direction of each view, and the composition of the shot.
- Photograph locations and directions of view marked on plans.
- Photographic images were taken using a digital SLR (Nikon D3100) camera set to maximum resolution (4608 x 3072; 14.2 effective megapixels) in RAW format. Photographic metadata was recorded on site using GAT pro-formas and digitised in Microsoft Excel and Access as part of the fieldwork archive and dissemination process; a total of 130 images were taken (archive ref.: G2762_01 to G2762_130; cf. [Appendix II](#)). The photographic images were converted to TIFF for final archiving using Adobe Photoshop.
- Photographs were adequately lit and not blurry, with all images checked on site.

2.3 Written Record

The Written Record comprised:

- The precise location of the building as an address and in the form of a National Grid reference.
- A note of any statutory designation (that is, listing, scheduling, Register of Historic Parks and Gardens, conservation area), where applicable.
- The date when the record was made, the name(s) of the recorder(s) and the location of the archive material.
- A summary statement describing the building's type and purpose, historically and at present, materials and any dating, so far as was apparent from a superficial inspection.
- The basic written record was completed using GAT pro-formas.

2.4 Drawn Record

The Drawn Record comprised:

- A plan showing the location and direction of view of each photograph. In this instance, the scaled plans detailed in *Dewis Architecture Drawing No. D907.02a*. (Figure 01), *Dewis Architecture Drawing No. D907.03* (Figure 02 & 04) and plans based on sketch of basement and attic (Figure 03) were used.

2.5 Dissemination & Archiving

The physical archive is stored in a designated project folder and the location confirmed in the Data Management Plan; the digital dataset is stored on a dedicated Trust server, with the location confirmed in the Data Management Plan via a specific hyperlink. The working project archive in this instance comprises digital data including photographic data, documentation and written data, as well as paper records, including project pro-formas. The Data Management Plan is stored on a project specific form in the GAT project database (format: *Microsoft Access*) and a Selection Strategy has been completed and appended (cf. [Appendix III](#)). The following dissemination and archiving of the report and digital dataset were applied:

- A digital report has been provided to Cyngor Gwynedd and Gwynedd Archaeological Planning Service (draft report then final report);
- A digital report has been provided to the regional Historic Environment Record; this was submitted within six months of project completion, along with a digital dataset comprising an Event PRN summary. The report and dataset was submitted in accordance with the required standards set out in *Guidance for the Submission of Data to the Welsh Historic Environment Records (HERs)* (Version 2); and
- A digital report and digital archive dataset has been provided to the Royal Commission on Ancient and Historical Monuments, Wales (final report only), in accordance with the *RCAHMW Guidelines for Digital Archives Version 1*. The dataset was prepared in the format required by RCAHMW and included:
 - Photographic metadata (Microsoft Access);
 - Photographic archive (TIFF format);
 - Project Information form (Excel);
 - File Information form (Excel) – Microsoft Word report text final;
 - File Information form (Excel) – Photographic metadata (general);
 - File Information form (Excel) – Adobe PDF report final; and
 - File Information form (Excel) - Photographic metadata (detail).

3 RESULTS

3.1 Introduction

Hillgrove School is located on Ffriddoedd Road Bangor, Gwynedd, LL57 2TW (NGR SH 57137 71825) and is comprised of a four-storey 19th century estate house, and prefabricated mid-20th century school buildings constructed around early 20th century external buildings. The main house is predominantly a white rendered structure with sandstone dressings, with a red tiled roof with five brick-built chimneys. Further late 19th century/early 20th century additions were built in similar style with walled garden and courtyard areas located at the north-east and south-west. Hillgrove stands in substantial grounds with the eastern edge incorporated into school yard which is enclosed by bedrock cliff, stone and brick walling at its perimeter.

3.2 Building Description

3.2.1 Exterior – 19th Century House

(Plates 01-03, 15, 18, 19 & 21: Figure 01)

Northern end of Hillgrove comprised of a mid-19th century manor house with red riled roofing and ornate brick chimneys. Style of house is faux-late medieval, noted within the sand stone framed windows, mocking a 15th century style. Sandstone quoins stones were also present on most corners of building. Dormer windows with a white diamond plaster design are noted on northern and western first floor elevations, which could possibly a later 19th century/early 20th century addition. A turret is constructed on the northern corner of the building, with a balcony leading from it on west elevation. The main entrance to the 19th century building is accessed via porched entrance into building at North gable end, with a beautiful red tile and mosaic floored entrance.

3.2.2 Exterior - Early 20th Century Additions & School Buildings

(Plates 03-15, 20: Figure 01)

Located at the south end of the house is an additional two storey building (possibly constructed at the turn of the 20th century) with decorated dormer window on western first floor elevations, following similar design to the house. A wall leading to a court yard area with an iron gate connects this building to the house. Along the eastern elevation; the building is conjoined to the house via a mid-20th century white vinyl cladded bridge linking the first floor, the stores accessible externally from the ground. This detached building has a similar red tiled roof to the 19th century house with steel window frames mimicking the house's sandstone frames.

Further south, two other buildings built within the early 20th century were observed, noted by their gabled tile roofs and red brick foundations. However, mid-20th century prefabricated flat roofed school cabins constructed on brick foundations for the surround most of the early 20th century elevations. With the same white panelling used on the 'bridge' on part of the eastern elevation.

Most the external walls of these buildings and school have white painted rendering, excluding the post-1960s brick built detached school buildings.

3.2.3 *Interior – 19th Century House*

3.2.3.1 Ground floor – Rooms 1–15

(Plates 22-59: Figure 02)

Main building comprised of 12 large ornate rooms. Lobby 1 and hallway 2 is comprised of beautiful parquet floor and wooden ornate ceiling motifs with a carved wooden staircase leading to the first floor.

Lounge 3 is noted with red walls painted and white wooden seat embellishments within turret and running along western window ledge and fireplace in the. An interesting feature within this room is a stain glass window above the fire surround – though gas fire is now placed within original the surround.

Room 4, classed has mapped wall at north end and corniced ceiling and built in shelves and cupboards on either side of blocked fire place at southern end (painted white). At the rear of this part of the house is Room 5; which still has the original wooden and tiled fire surround and with wrought iron fire place still intact, the room is decorated with green walls and carpet.

All of these room in this part of the building comprised of ornate artex ceilings and light surrounds with decorated cornices and embossed wallpaper borders along edges of ceiling.

The eastern part of the house was originally designated and designed for servants use. The old range slate inglenook is still visible in Room 11, which is likely the former kitchen, with room 12 currently used as a kitchen is likely the former scullery. Rooms 10 and 9, were possibly formerly used as a pantry and washroom, with original quarry tiles noted under 1970s lino tiles in room 9. Former servant bells are still intact above closet in corridor 6, with a narrow staircase leading from corridor 8 up to the first floor.

3.2.3.2 First floor – Rooms 16-32

(Plates 68-111: Figure 02)

The first floor is predominantly comprised with five large bedrooms with original fireplaces still intact (Rooms 17-18, 20- 22 and 27). All rooms are carpeted, except for bathroom areas and en-suite. At the northern end of the substantial wooden banister landing is Room 19; a small room with opaque glass doors overlooking the house entrance. At the southern end of first floor are rooms connected to the former school are built within the mid-20th century bridge connecting the house to room 32. This is large room is evidently part of the later 19th/early 20th century addition with open roof space and exposed wooden ceiling beams. Likely formerly used during Hillgrove's time as military hospital, and in use as a possible IT classroom for school. There is an external door leading to steel staircase into school yard on southern end of room.

3.2.3.3 Second floor – Rooms 33 and 34

(Plates 112-117: Figure 03)

This area attic is accessed via an incredibly steep and narrow staircase leading to two loft rooms. Room 33 has a window at the eastern end and a blocked fireplace with carpet flooring and yellow painted walls. Room 34 is accessed by three further narrow steps, lighted by skylight window with exposed roof beams and is smaller than 33. Room very likely used as servant's bedrooms when house was in use pre-wartime. There was a narrow entrance into the roof spaces from both attic rooms.

3.2.3.4 Basement - Rooms 35-37

(Plates 118-126: Figure 03)

The basement is accessed via slate steps located below main staircase from Room 2. The layout of the basement parallels parts of room 1-3. Room 35 is a corridor area with concrete floors and white-washed walls. Room 36 is a small space classed as 'workshop' (noted on wooden door) which has an inglenook at eastern end. Largest of the rooms is 37, which has two blocked windows and built-in work surfaces constructed of bricks and large slate slabs on the southwestern and eastern ends of the room.

3.2.4 Interior – detached early 20th century buildings

(Plates 60-67, 127-130: Figure 02, 04)

These are mostly comprised of one storey external buildings which were later additions during the possible late 19th century; most of which would have originally functioned during the buildings use as a first world war military hospital.

The first floor of the two-storey late 19th/20th century addition, room 32 has been previously discussed. The ground floor of this building was in use as during the school lavatories and cloakroom for the boys (rooms 13 and 14). The original tile flooring still intact throughout and in the northeastern end of room 13 is a small storage/tap area which still bares remains of original plaster and paint work. Was unable to gain access to store 15 located at eastern side of building.

The other two buildings, the 'main hall' and former 'bungalow' have been merged within the school complex and surrounded my mid-20th century prefabricated cabins. Room 38 (main hall) is a large area with high exposed roof with visible wooden ceiling beams and steel supports. Rooms 39 and 40, in use as classrooms located at eastern end within former 'bungalow'; were the only spaces to be ascertained in this early 20th century building. As along the western end of the building, the former original rooms have been heavily modified within the 1960's-70's classrooms and hallway and were not easily definable.

4 CONCLUSION

Gwynedd Archaeological Trust was commissioned by *Carlton (North Wales) Limited on behalf of North Wales Recovery Communities* to undertake a photographic survey prior to the re-development of the former Hillgrove School on Ffriddoedd Road Bangor. The school complex is comprised of a 19th century estate house (previously known as Llwyn Eithin), with extensive flat roofed prefabricated mid-20th century additions constructed around early 20th century cottage hospital buildings which were in use during first world war as part of Penrhyn Cottage Hospitals.

The photographic survey comprised 130 images which included exterior and internal views of all elevations and accessible rooms.

The 19th century house comprised of a basement, ground floor; including living room areas and former servant kitchen areas. An attic housing two loft rooms, a first floor; including six bedrooms, a bathroom and ensuite, with mid-20th century school additions located at the southern end. The exterior is predominantly a white rendered structure with sandstone decorative embellishment on the estate house, with the 20th century elements of Hillgrove constructed on brick foundations, with white rendered structures with partial white vinyl cladding (with the exception of three brick built detached school buildings). Within the interior, original 19th century period features associated to the house is in excellent state of preservation, with the school buildings very much in keeping with the mid-20th century wall fittings, flooring and fixtures.

5 SOURCES CONSULTED

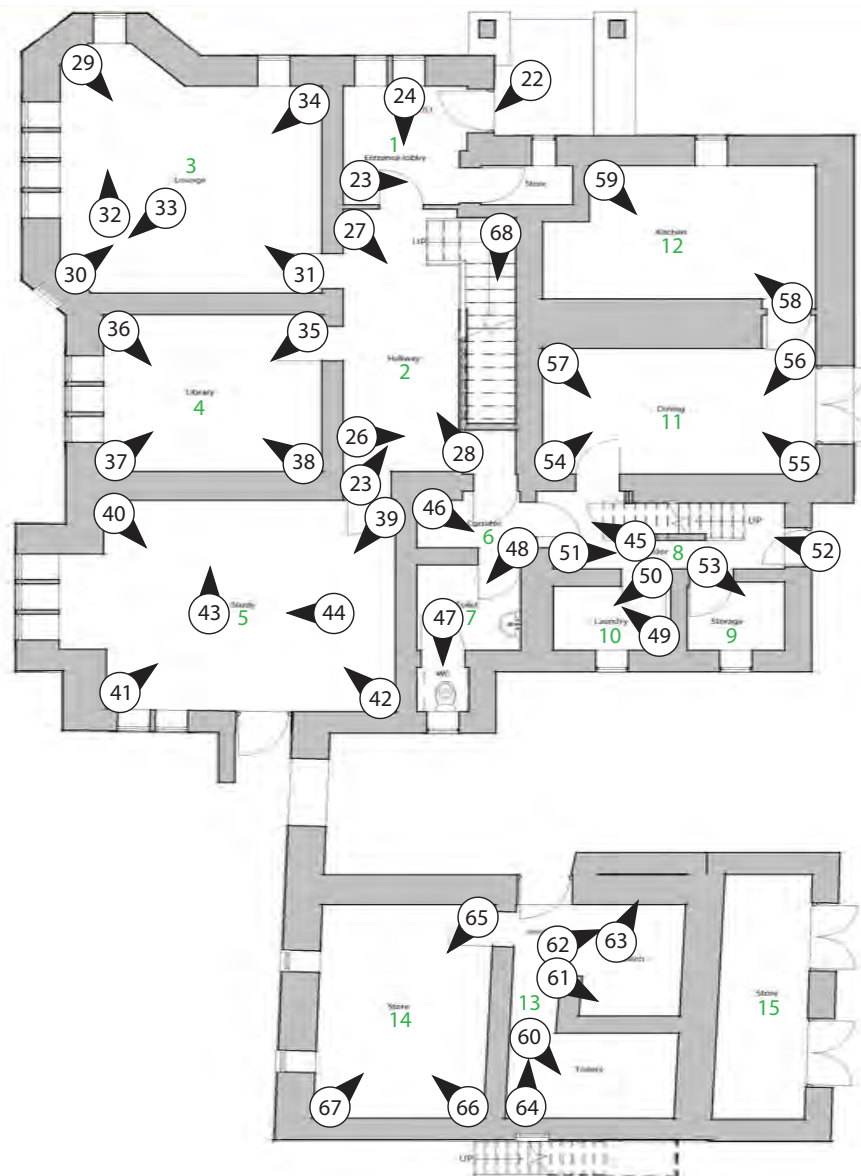
1. Chartered Institute for Archaeologists, 2020, Standard and Guidance for the Archaeological Investigation and Recording of Standing Buildings or Structures
2. Chartered Institute for Archaeologists, 2020, Standard and guidance for the collection, documentation, conservation and research of archaeological materials
3. English Heritage, 1991, Management of Archaeological Projects (MAP2)
4. Historic England, 2015, Management of Research Projects in the Historic Environment (MoRPHE)
5. Historic England, 2016. *Understanding Historic Buildings: A Guide to Good Recording Practice*
6. Royal Commission on Ancient and Historic Monuments of Wales, 2015, Guidelines for digital archives
7. The Welsh Archaeological Trusts, 2022. *Guidance for the Submission of Data to the Welsh Historic Environment Records (HERs) Version 2.*



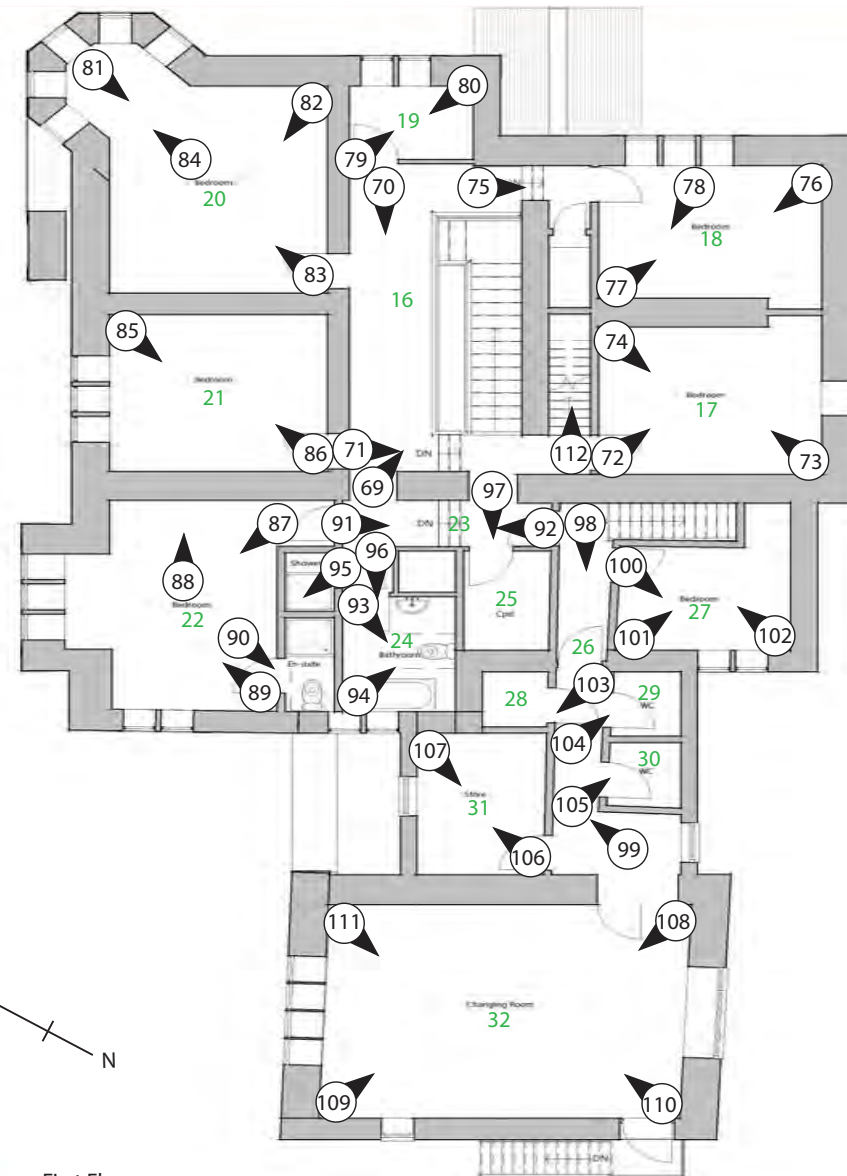
Figure 01: Reproduction of Dewis Architecture Drawing No. D907.04 with Gwynedd Archaeological Trust amendments detailing location and orientation of photographic archive images. Not to scale.



Ymddiriedolaeth Archaeolegol Gwynedd
Gwynedd Archaeological Trust



Ground Floor



First Floor

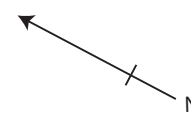
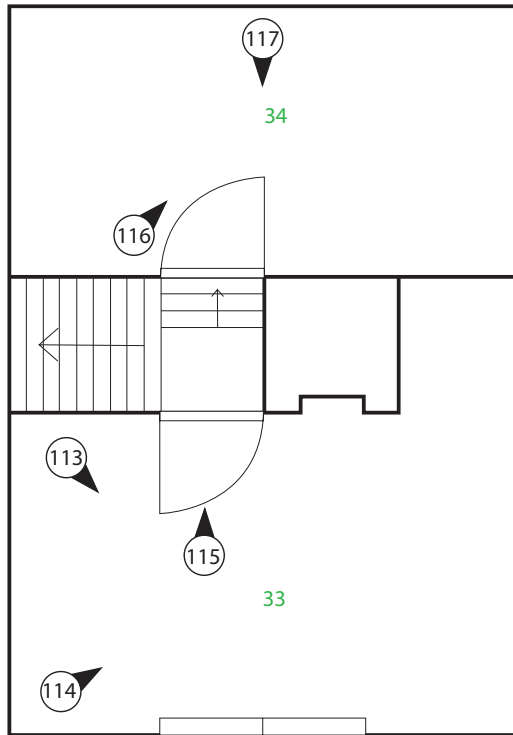
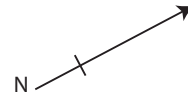


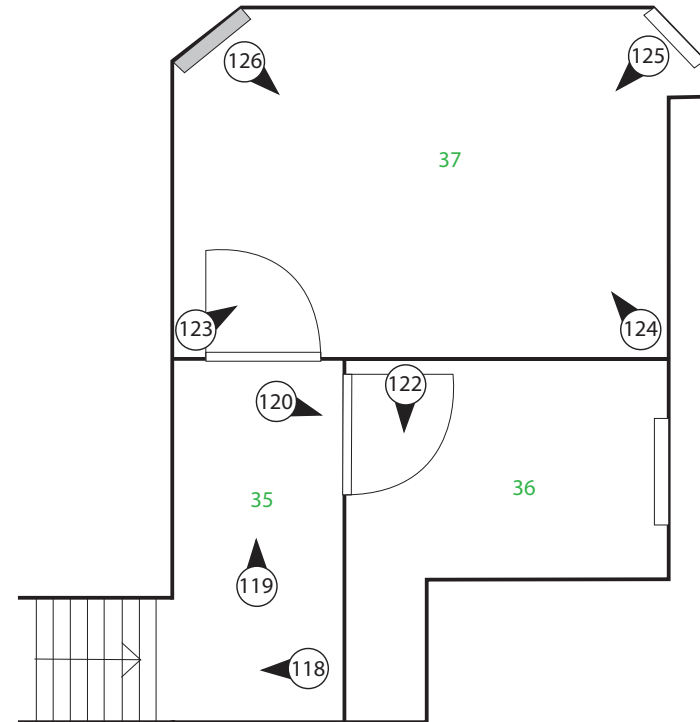
Figure 02: Partial reproduction of Dewis Architecture Drawing No. D907.03 with Gwynedd Archaeological Trust amendments detailing location and orientation of interior photographic archive images (ground floor and first floor only). Not to scale.



Ymddiriedolaeth Archaeolegol Gwynedd
Gwynedd Archaeological Trust



Basement



Second Floor attic

Figure 03: Plan detailing location and orientation of interior photographic archive images (basement and second floor attic only). Not to scale.



Ymddiriedolaeth Archaeolegol Gwynedd
Gwynedd Archaeological Trust



Figure 04: Partial reproduction of Dewis Architecture Drawing No. D907.03 with Gwynedd Archaeological Trust amendments detailing location and orientation of interior photographic archive images (ground floor only). Not to scale.



Plate 1: View of N elevation of 19th C house; scale 1m; view from NE (archive reference: G2762_01).



Plate 2: Oblique view of 19th C house; scale 1m; view from N (archive reference: G2762_02).



Plate 3: Oblique view of early 20th C extension / W elevation of 19th C house;
Ts scale 1m; view from NW (archive reference: G2762_03).



Plate 4: Oblique view of W elevation / 1960's classrooms; scale 1m;
view from N (archive reference: G2762_04).



Plate 5: View of W elevation of classrooms; scale 1m; view from NW (archive reference: G2762_05).



Plate 6: View of post 1960's classrooms w/ view of early 20th C 'bungalow'; scale 1m; view from SW (archive reference: G2762_06).



Plate 7: View of S elevation showing school buildings; scale 1m; view from S (archive reference: G2762_07).



Plate 8: Oblique view of school buildings including early 20th C 'bungalow'; scale not used; view from S (archive reference: G2762_08).



Plate 9: View of school buildings; scale 1m; view from S
(archive reference: G2762_09).



Plate 10: Oblique view of school buildings; scale 1m;
view from S (archive reference: G2762_10).



Plate 11: Oblique view of school buildings w/ early 20th C 'bungalow'; scale 1m; view from E (archive reference: G2762_11).



Plate 12: View of archway in school grounds; scale 1m; view from N (archive reference: G2762_12).



Plate 13: Oblique view of E elevation of 19th C house w/ extension; scale 1m; view from S (archive reference: G2762_13).



Plate 14: Oblique view of early 20th C building incorporated into school; scale 1m; view from NE (archive reference: G2762_14).



Plate 15: Oblique view of E elevation of 19th C house; scale 1m;
view from S (archive reference: G2762_15).



Plate 16: View of school buildings adjacent to 19th C house; scale 1m;
view from E (archive reference: G2762_16).



Plate 17: View of courtyard area; scale 1m; view from E (archive reference: G2762_17).



Plate 18: View of courtyard area; scale 1m; view from W (archive reference: G2762_18).



Plate 19: Oblique view of 19th C house w/ walled garden; scale not used; view from N (archive reference: G2762_19).



Plate 20: Oblique view of E elevation w/ schoolyard; scale not used; view from E (archive reference: G2762_20).



Plate 21: View of porch w/ tile floor; scale 1m;
view from NE (archive reference: G2762_21).

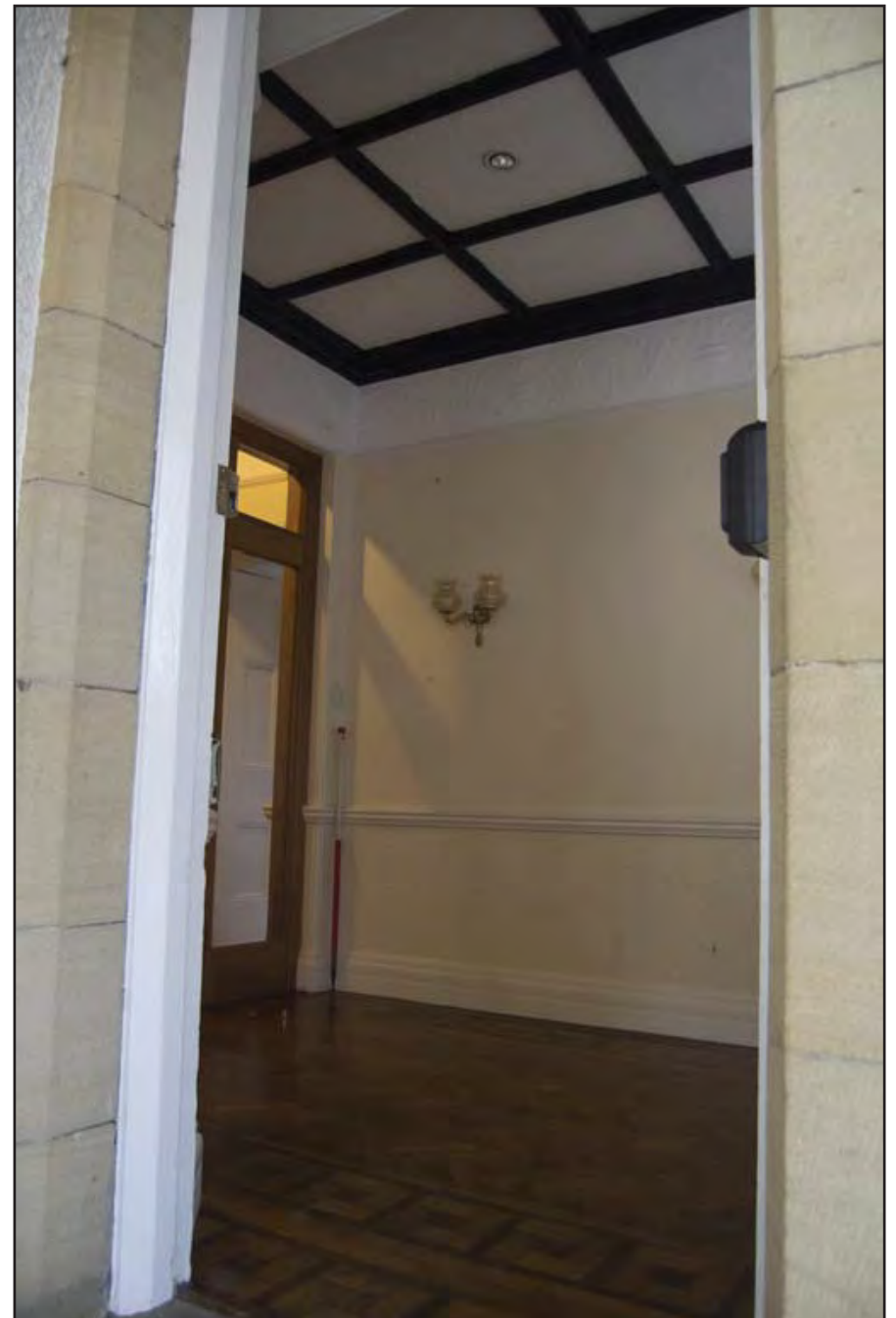


Plate 22: View into room 1 from entrance; scale 1m;
view from NE (archive reference: G2762_22).



Plate 23: View of store; scale 1m; view from W
(archive reference: G2762_23).



Plate 24: View of glass door entrance into hallway; scale 1m;
view from N (archive reference: G2762_24).



Plate 25: View of hallway; scale 1m; view from SW (archive reference: G2762_25).



Plate 26: View of cupboard within hall/alcove; scale 1m; view from W (archive reference: G2762_26).



Plate 27: View of staircase; scale 1m; view from W (archive reference: G2762_27).



Plate 28: View of hallway (ceiling detail); scale 1m; view from S (archive reference: G2762_28).



Plate 29: View of entrance into lounge; scale 1m; view from NW (archive reference: G2762_29).



Plate 30: View of room 3 from the W with window; scale 1m; view from W (archive reference: G2762_30).



Plate 31: View of windows in lounge; scale 1m; view from S (archive reference: G2762_31).



Plate 32: View of seating area in lounge (3); scale 1m; view from S (archive reference: G2762_32).



Plate 33: View of gas fireplace and stained glass window; scale 1m; view from SE (archive reference: G2762_33).



Plate 34: View of window and gas fireplace; scale 1m; view from SE (archive reference: G2762_34).



Plate 35: View of window in library (4); scale 1m; view from NE (archive reference: G2762_35).



Plate 36: View of bookcases and former fireplace; scale 1m; view from NW (archive reference: G2762_36).



Plate 37: View of entrance into room 4 w/ map wall feature; scale 1m; view from SW
(archive reference: G2762_37).



Plate 38: View of room 4 from SE with window; scale 1m; view from SE
(archive reference: G2762_38).



Plate 39: View of windows and outside exit in room 5; scale 1m; view from NE (archive reference: G2762_39).



Plate 40: View of exit to outdoors and window; scale 1m; view from NW (archive reference: G2762_40).



Plate 41: View of fireplace and entrance into study; scale 1m; view from SW (archive reference: G2762_41).



Plate 42: View of fireplace and window; scale 1m; view from SE (archive reference: G2762_42).



Plate 43: View of fireplace; scale 1m; view from S
(archive reference: G2762_43).



Plate 44: View of window alcove; scale 1m; view from E
(archive reference: G2762_44).



Plate 45: View of corridor 6 w/ servant bells; scale 1m; view from E (archive reference: G2762_45).



Plate 46: View of corridor 6 and 8; scale 1m; view from NW (archive reference: G2762_46).

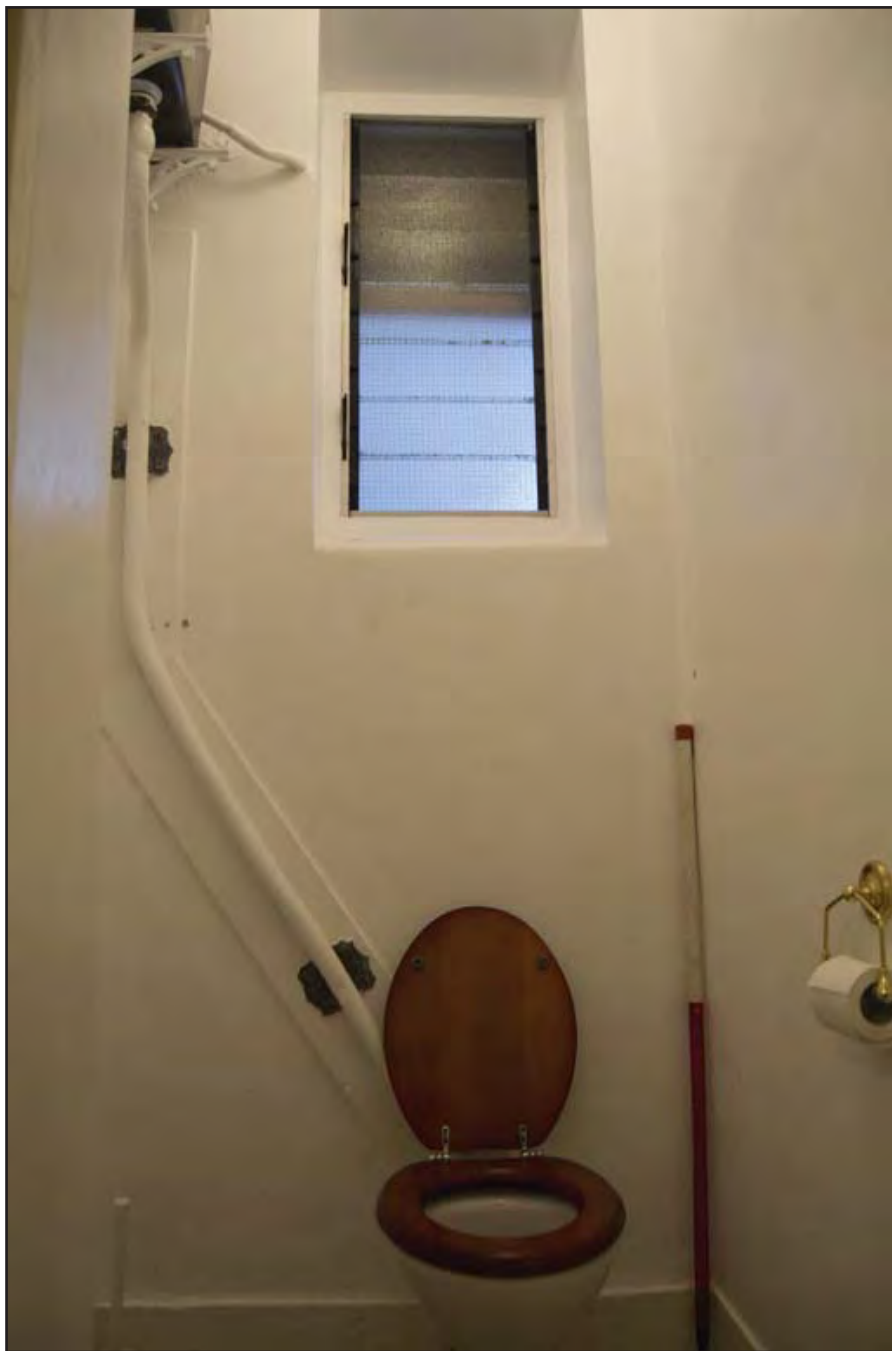


Plate 47: View of W.C.; scale 1m; view from N
(archive reference: G2762_47).



Plate 48: View of toilet (7); scale 1m; view from N
(archive reference: G2762_48).



Plate 49: View of room 10 (laundry); scale 1m; view from SE (archive reference: G2762_49).

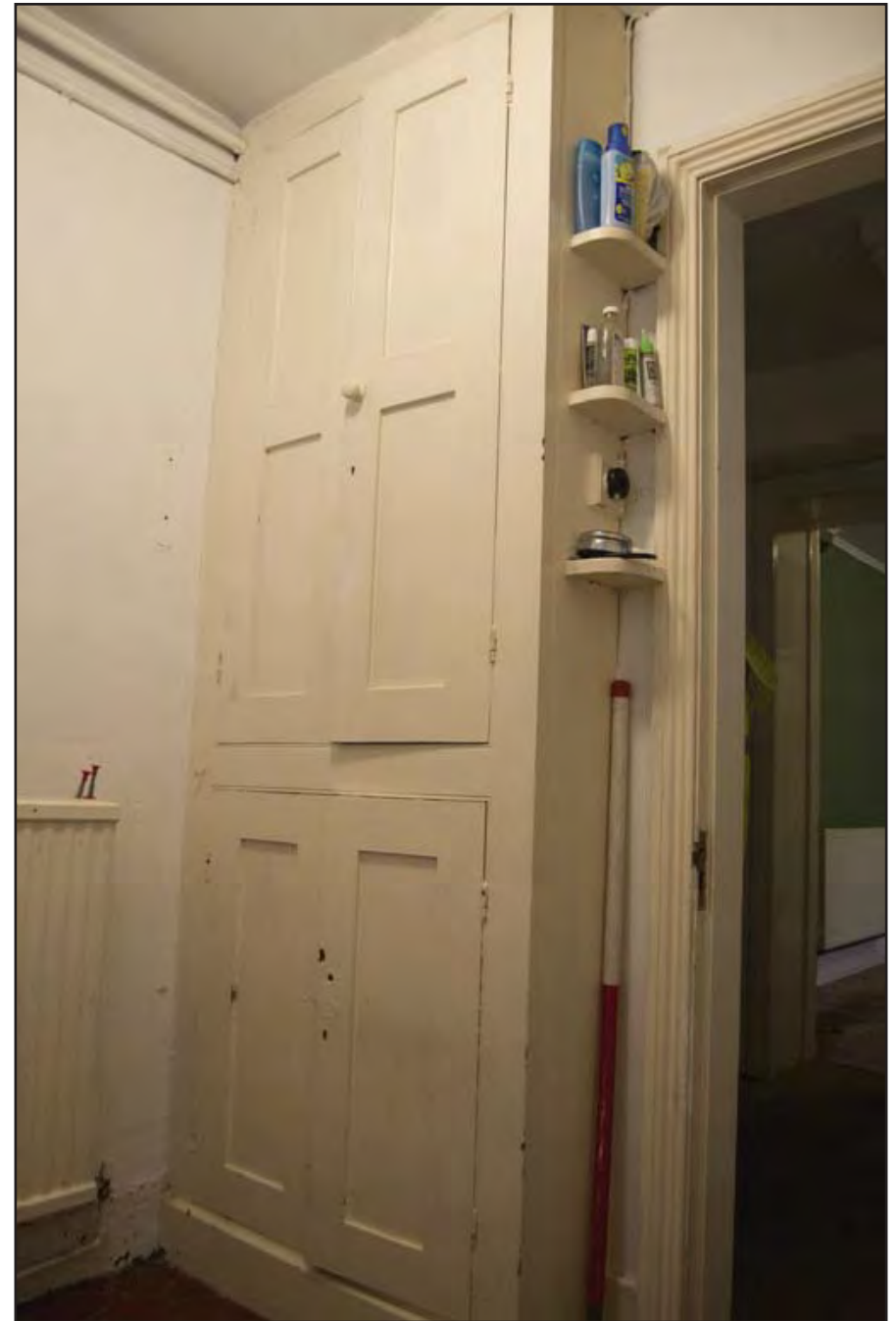


Plate 50: View of built-in cupboard in room 10; scale 1m; view from NE (archive reference: G2762_50).



Plate 51: View of corridor (8); scale 1m; view from W (archive reference: G2762_51).

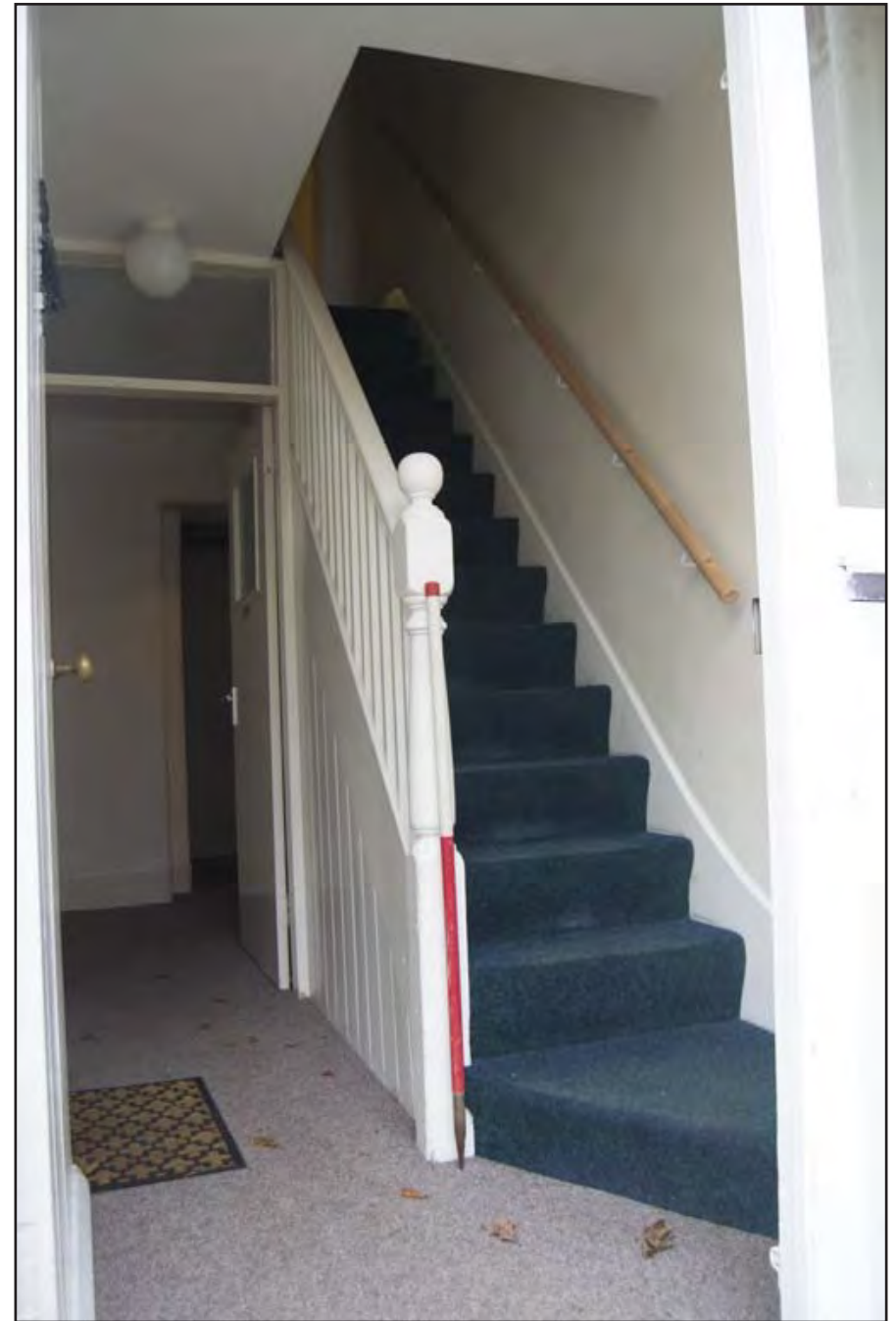


Plate 52: View of corridor (8) and staircase; scale 1m; view from NW (archive reference: G2762_52).



Plate 53: View into storage (9); scale 1m; view from E (archive reference: G2762_53).



Plate 54: View of inglenook and glass doors in room 11; scale 1m; view from SW (archive reference: G2762_54).



Plate 55: View of storage cupboard and inglenook; scale 1m; view from SE (archive reference: G2762_55).



Plate 56: View of entrance into room 11; scale 1m; view from NE (archive reference: G2762_56).



Plate 57: View of glass doors leading into walled garden; scale 1m; view from NW (archive reference: G2762_57).



Plate 58: View of kitchen; scale 1m; view from SE (archive reference: G2762_58).



Plate 59: View of entrance to kitchen w/ window and arched inglenook; scale 1m; view from NW (archive reference: G2762_59).



Plate 60: View of taps and W.C.'s; scale 1m; view from N (archive reference: G2762_60).



Plate 61: View of urinals; scale 1m; view from NW
(archive reference: G2762_61).



Plate 62: Possible former showers; scale 1m; view from SW
(archive reference: G2762_62).



Plate 63: Tap room showing original plaster/paint work; scale 1m; view from SW (archive reference: G2762_63).



Plate 64: View of entrance into toilets; scale 1m; view from S (archive reference: G2762_64).



Plate 65: View of store room 14; scale 1m; view from NE (archive reference: G2762_65).



Plate 66: View of windows; scale 1m; view from SE (archive reference: G2762_66).



Plate 67: View of entrance; scale 1m; view from SW
(archive reference: G2762_67).

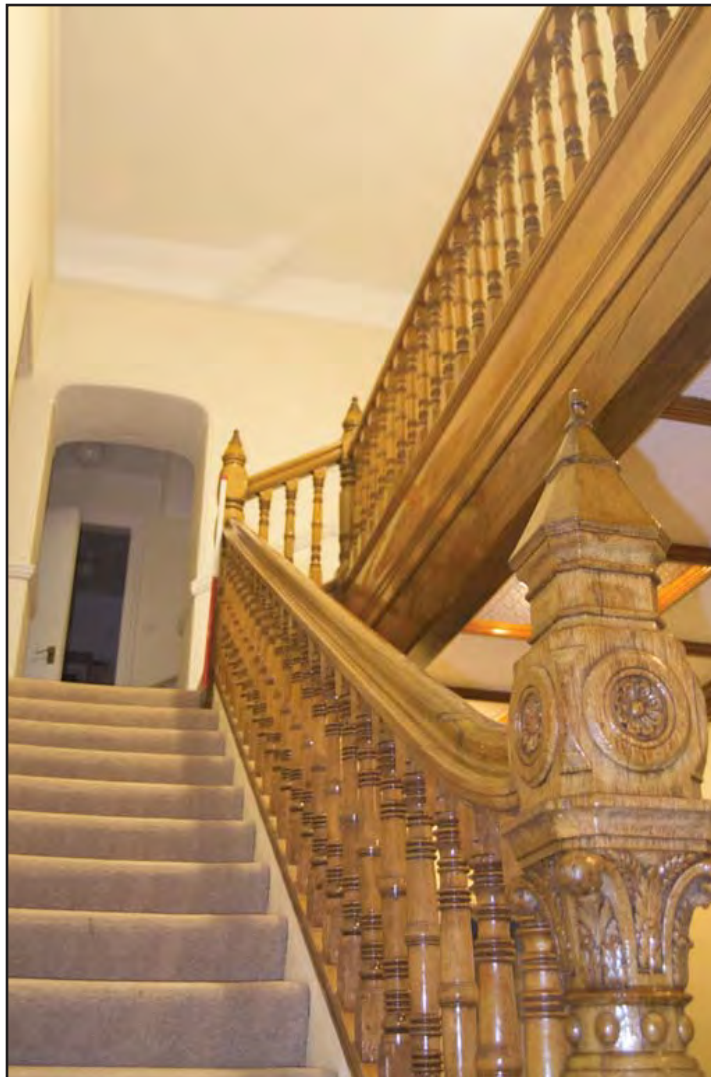


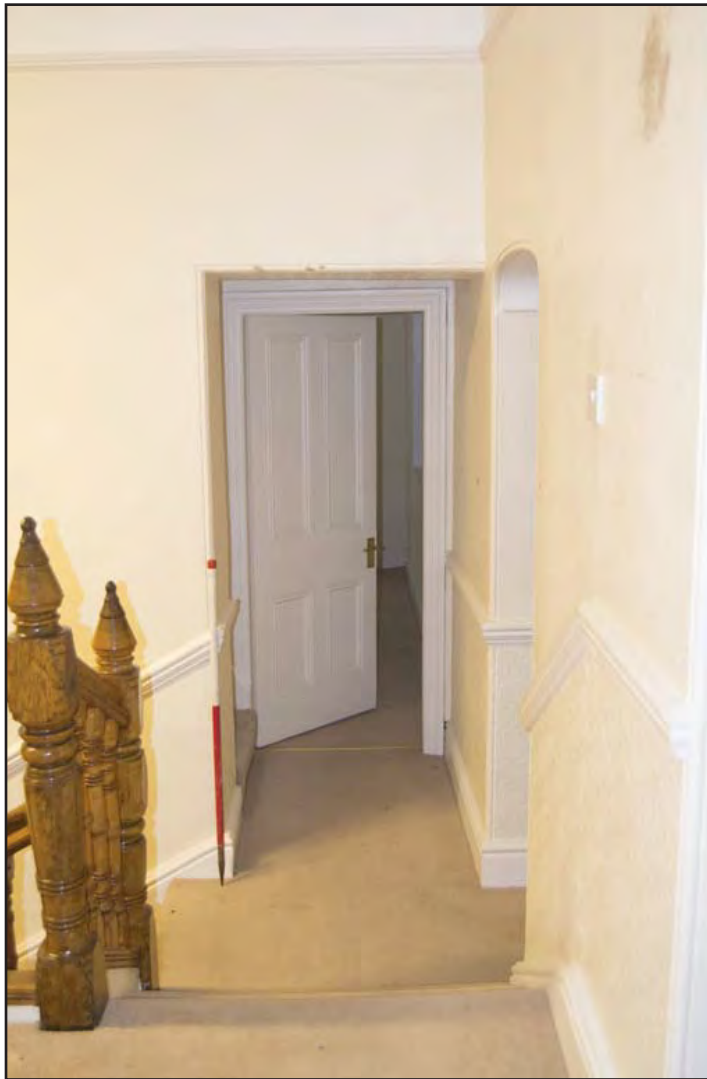
Plate 68: Staircase leading into landing (16);
scale 1m; view from N (archive reference: G2762_68).



Plate 69: View of landing (16) showing bannister and doors; scale 1m; view from S (archive reference: G2762_69).



Plate 70: View of landing (16) showing bannister; scale 1m; view from N (archive reference: G2762_70).



**Plate 71: View into bedroom (17); scale 1m;
view from W (archive reference: G2762_71).**



Plate 72: View of window; scale 1m; view from SW (archive reference: G2762_72).



Plate 73: View of entrance and boiler cupboard; scale 1m;
view from SE (archive reference: G2762_73).



Plate 74: View of window and square alcove; scale 1m; view from NE (archive reference: G2762_74).



**Plate 75: View into bedroom (18); scale 1m;
view from W (archive reference: G2762_75).**



**Plate 76: View of entrance and fireplace; scale 1m; view from E
(archive reference: G2762_76).**



Plate 77: View of window; scale 1m; view from W (archive reference: G2762_77).



Plate 78: View of fireplace and built-in bookshelf;
scale 1m; view from SW (archive reference: G2762_78).



Plate 79: View into room 19; scale 1m; view from SW
(archive reference: G2762_79).



Plate 80: View of entrance into room 19; scale 1m;
view from NE (archive reference: G2762_80).



Plate 81: View of entrance into bedroom 20; scale 1m; view from N (archive reference: G2762_81).



Plate 82: Blocked up fireplace in bedroom 20; scale 1m; view from E (archive reference: G2762_82).



**Plate 83: View of fireplace and turret windows; scale 1m;
view from S (archive reference: G2762_83).**



**Plate 84: Close-up view of turret windows; scale 1m;
view from S (archive reference: G2762_84).**



Plate 85: Entrance into bedroom and fireplace; scale 1m;
view from N (archive reference: G2762_85).



Plate 86: View of window, desk area and fireplace; scale 1m;
view from E (archive reference: G2762_86).



Plate 87: View of windows; scale 1m; view from N (archive reference: G2762_87).



Plate 88: View of fireplace; scale 1m; view from S (archive reference: G2762_88).



Plate 89: View of window and fireplace; scale 1m; view from S (archive reference: G2762_89).



Plate 90: View of en-suite; scale not used; view from NW (archive reference: G2762_90).



Plate 91: View of corridor (23); scale 1m; view from W
(archive reference: G2762_91).



Plate 92: View of corridor (23); scale 1m; view from E
(archive reference: G2762_92).



Plate 93: View of bathroom (24); scale 1m; view from N
(archive reference: G2762_93).



Plate 94: View of bathroom (24); scale 1m; view from W
(archive reference: G2762_94).



Plate 95: View of shower; scale 1m; view from E
(archive reference: G2762_95).

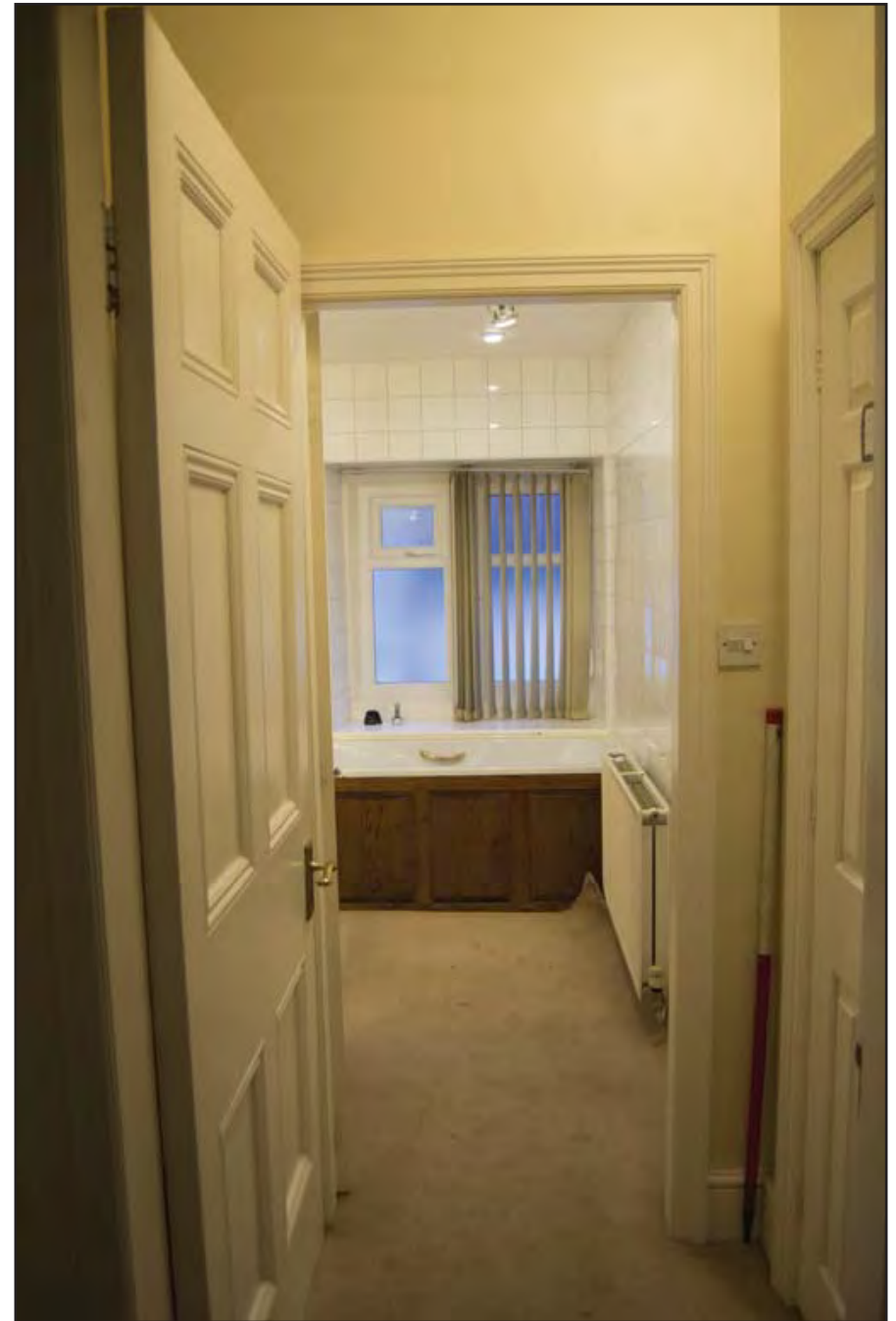


Plate 96: View into bathroom; scale 1m;
view from N (archive reference: G2762_96).



Plate 97: View of room 25 (Storage); scale 1m;
view from N (archive reference: G2762_97).



Plate 98: View of corridor (26); scale 1m; view from N
(archive reference: G2762_98).



Plate 99: View of corridor (26); scale 1m; view from S (archive reference: G2762_99).

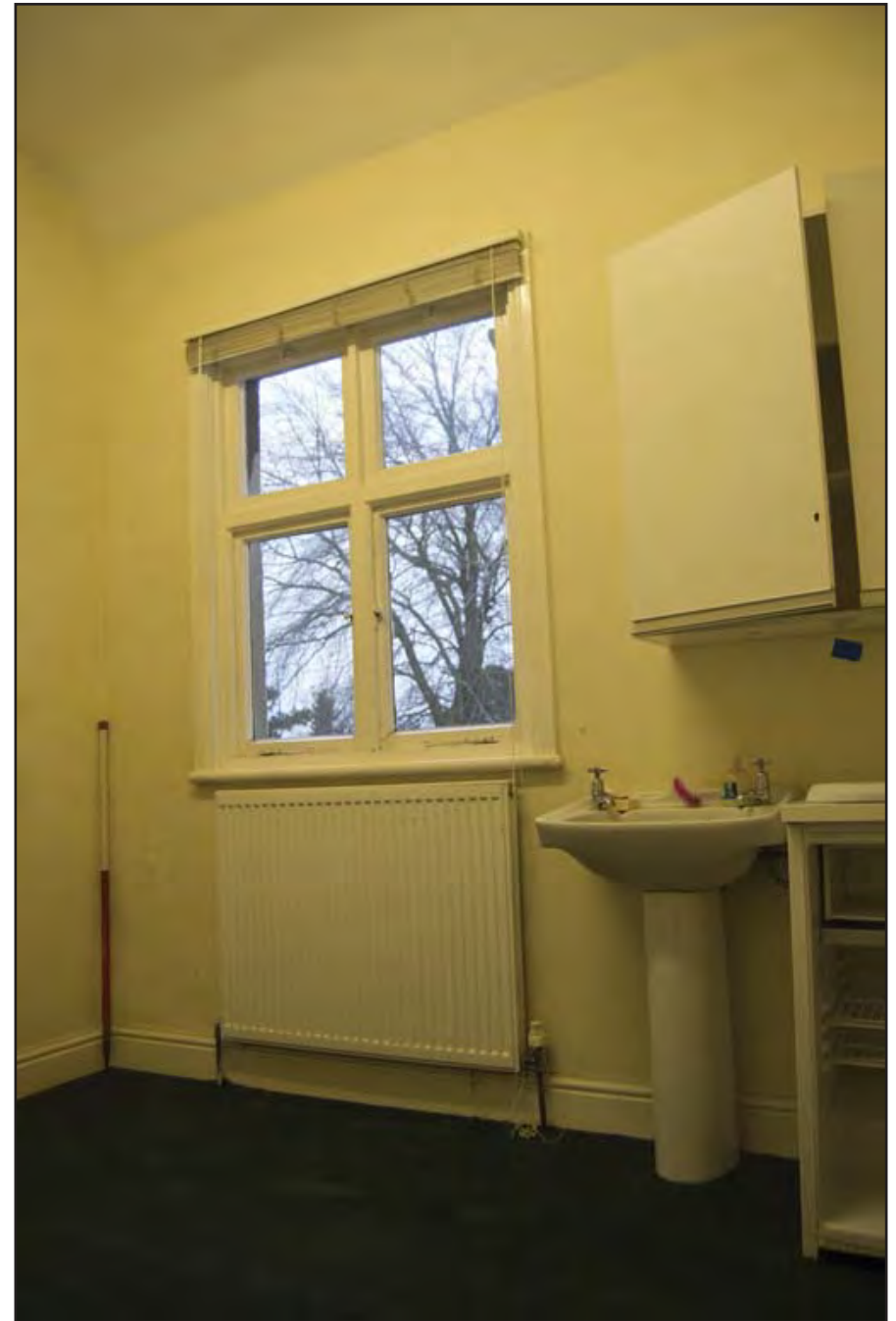


Plate 100: View of window and sink; scale 1m; view from N (archive reference: G2762_100).



Plate 101: View of storage; scale 1m; view from W (archive reference: G2762_101).



Plate 102: View of entrance; scale 1m; view from S (archive reference: G2762_102).



Plate 103: View of storage cupboard (28); scale 1m; view from S
(archive reference: G2762_103).



Plate 104: View of W.C. (29); scale 1m; view from W
(archive reference: G2762_104).



Plate 105: View of W.C. (30); scale 1m; view from W (archive reference: G2762_105).



Plate 106: View of window; scale 1m; view from S (archive reference: G2762_106).



Plate 107: View of door; scale 1m; view from N (archive reference: G2762_107).



Plate 108: View of ceiling beams in room 32;
scale 1m; view from E (archive reference: G2762_108).



Plate 109: View of entrance to room 32 and window; scale 1m; view from W (archive reference: G2762_109).



Plate 110: View of W window; scale 1m; view from S (archive reference: G2762_110).



Plate 111: View of E window; scale not used; view from N
(archive reference: G2762_111).



Plate 112: View of staircase; scale 1m; view from S
(archive reference: G2762_112).



Plate 113: View into bedroom 33 and window; scale 1m;
view from W (archive reference: G2762_113).



Plate 114: View of entrance and former fireplace; scale 1m;
view from S (archive reference: G2762_114).

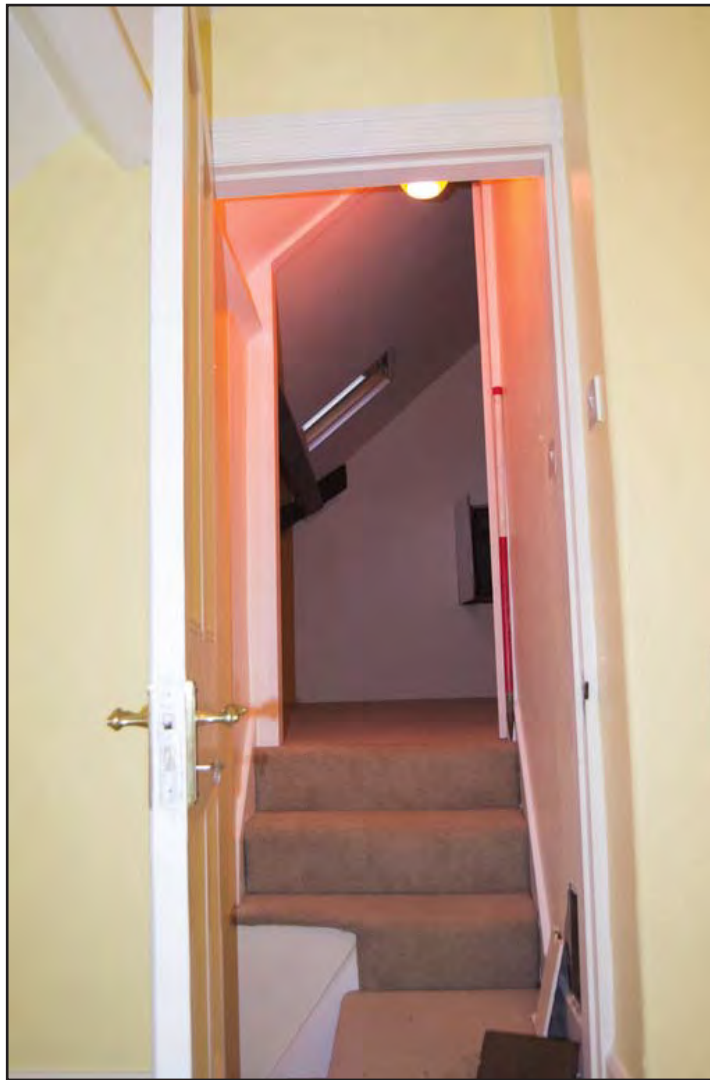


Plate 115: View of entrance into loft area/attic; scale 1m; view from SE (archive reference: G2762_115).



Plate 116: View of attic (34); scale 1m; view from E (archive reference: G2762_116).



Plate 117: View of door into attic; scale 1m; view from W (archive reference: G2762_117).



Plate 118: View up stairs leading into basement; scale 1m; view from N (archive reference: G2762_118).



Plate 119: View of corridor (basement); scale 1m;
view from SE (archive reference: G2762_119).



Plate 120: View of 'workshop' room (basement; scale 1m;
view from S (archive reference: G2762_120).



Plate 121: Door of workshop; scale 1m; view from N
(archive reference: G2762_121).



Plate 122: View of alcove in workshop; scale 1m;
view from W (archive reference: G2762_122).



Plate 123: View of room 37 in basement; scale 1m; view from SE (archive reference: G2762_123).



Plate 124: View of worktop area and blocked window; scale 1m; view from NE (archive reference: G2762_124).



Plate 125: View of door and worktop areas; scale 1m; view from N (archive reference: G2762_125).



Plate 126: View of worktop areas and former window; scale 1m; view from SW (archive reference: G2762_126).



Plate 127: View of early 20th C room classed as main hall - entrance; scale 1m; view from SW (archive reference: G2762_127).



Plate 128: View of 'main hall'; scale 1m; view from NE (archive reference: G2762_128).



Plate 129: Classroom within early 20th C 'bungalow' building; scale 1m; view from E (archive reference: G2762_129).



Plate 130: Classroom within early 20th C 'bungalow' building; scale not used; view from NW (archive reference: G2762_130).

APPENDIX I

Gwynedd Archaeological Trust Written Scheme of Investigation

HILLGROVE, BANGOR (G2762)

WRITTEN SCHEME OF INVESTIGATION FOR ARCHAEOLOGICAL MITIGATION: PHOTOGRAPHIC SURVEY

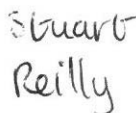
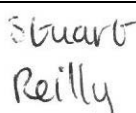

Prepared for

*Carlton (North Wales) Limited on behalf of North Wales
Recovery Communities*

December 2022



Ymddiriedolaeth Archaeolegol Gwynedd
Gwynedd Archaeological Trust

Approvals Table				
	Role	Printed Name	Signature	Date
Originated by	Document Author	Stuart Reilly		16/12/2022
Reviewed by	Document Reviewer	John Roberts		16/12/2022
Approved by	Principal Archaeologist	John Roberts		16/12/2022

Revision History			
Rev No.	Summary of Changes	Ref Section	Purpose of Issue

All GAT staff should sign their copy to confirm the project specification is read and understood and retain a copy of the specification for the duration of their involvement with the project. On completion, the specification should be retained with the project archive:

Name

Signature

Date

HILLGROVE, BANGOR (G2762)

WRITTEN SCHEME OF INVESTIGATION FOR ARCHAEOLOGICAL MITIGATION: PHOTOGRAPHIC SURVEY

Prepared for *Carlton (North Wales) Limited on behalf of North Wales Recovery Communities*, December 2022

1	INTRODUCTION.....	6
1.1	Aims and Objectives	8
1.2	Monitoring Arrangements.....	8
1.3	Historic Environment Record	8
2	METHOD STATEMENT	9
2.1	Introduction	9
2.2	Photographic Record	10
2.3	Written Record.....	12
2.4	Drawn Record.....	13
2.5	Selection Strategy & Data Management Plan	14
2.6	Reporting	15
2.7	Dissemination & Archiving	16
3	PERSONNEL	17
4	HEALTH AND SAFETY	18
5	social media	19
6	INSURANCE	20
6.1	Public/Products Liability	20
6.2	Employers Liability	20
6.3	Professional Indemnity.....	20
7	SOURCES CONSULTED.....	21
	Figure 01.....	22
	Site Location. Dewis Architecture Drawing No. D907.02a. Scale: As Shown.	22
	Figure 02.....	23
	Reproduction of Dewis Architecture Drawing No. D907.04. Scale: As Shown.....	23
	Figure 03.....	24
	Reproduction of <i>Dewis Architecture Drawing No. D907.03</i> . Scales: As Shown.	24

Appendix I.....	25
Gwynedd Archaeological Trust Photographic Metadata Pro-Forma	25
Appendix II.....	26
Gwynedd Archaeological Trust Building Record pro-forma	26
Appendix III.....	27
Gwynedd Archaeological Trust room recording pro-forma	27
Appendix IV	28
Gwynedd Archaeological Trust Selection Strategy.....	28

1 INTRODUCTION

Gwynedd Archaeological Trust (GAT) has been commissioned by *Carlton (North Wales) Limited* on behalf of *North Wales Recovery Communities* to undertake archaeological mitigation prior to the re-development of the former Hillgrove School on Ffriddoedd Road Bangor, Gwynedd, LL57 2TW (NGR SH 57137 71825 cf. Figure 01). The school complex is comprised of a high-pitched roof two-storey 19th century house (formerly known as Llwyneithin) with extensive additions that date from the latter half of the 20th century, as detailed on *Dewis Architecture Drawing No. D907.04* (Figure 02) and *Dewis Architecture Drawing No. D907.03* (Figure 03). The development is being undertaken as part of planning application C22/0662/11/LL and Condition 5. The archaeological mitigation will be undertaken in accordance with these requirements and will be commensurate to a Photographic Survey as defined in *Understanding Historic Buildings: A Guide to Good Recording Practice* (Historic England, 2016). A Photographic Survey provides a very full visual record, but without a written or drawn survey at a comparable level of detail.

The photographic survey will be undertaken in January 2023 and all work will be planned, managed and undertaken by GAT in accordance with the following standards and guidance:

- Guidance for the Submission of Data to the Welsh Historic Environment Records (HERs) Version 2 (The Welsh Archaeological Trusts, 2020);
- Guidelines for digital archives (Royal Commission on Ancient and Historic Monuments of Wales, 2015);
- Gwynedd Archaeological Planning Service Requirements for General Photographic Surveys of Buildings, 2010;
- Management of Archaeological Projects (English Heritage, 1991);
- Management of Research Projects in the Historic Environment: The MoRPHE Project Managers' Guide (Historic England, 2015);
- Standard and Guidance for the Archaeological Investigation and Recording of Standing Buildings or Structures (Chartered Institute for Archaeologists, 2014);
- Standard and guidance for the collection, documentation, conservation and research of archaeological materials (Chartered Institute for Archaeologists, 2014); and
- Understanding Historic Buildings: A Guide to Good Recording Practice (Historic England, 2016).

Gwynedd Archaeological Trust is certified to ISO 9001:2008 and ISO 14001:2004 (Cert. No. 74180/A/0001/UK/En), a Registered Organisation with the Chartered Institute for Archaeologists (CIfA).

1.1 Aims and Objectives

The key aims and objectives are to:

- Complete descriptive record of the former school of Hillgrove sufficient to provide a full visual record.

1.2 Monitoring Arrangements

The archaeological mitigation will be monitored by the Gwynedd Archaeological Planning Service (GAPS); both the written scheme of investigation and all subsequent reporting must be approved by GAPS before final issue. GAPS contact details are:

- Tom Fildes | tom.fildes@heneb.co.uk | 07920264232.

1.3 Historic Environment Record

In line with the regional Historic Environment Record (HER) requirements, the HER will be contacted at the onset of the project to ensure that any data arising is formatted in a manner suitable for accession to the HER and follows the guidance set out in *Guidance for the Submission of Data to the Welsh Historic Environment Records (HERs)* (The Welsh Archaeological Trusts, 2022). In line with this guidance, all submitted reporting will need to include the equivalent of a non-technical summary in Welsh and English at the front of the report combined with short bilingual summaries of the principal Historic Assets recorded during the event. These requirements are mandatory.

The HER enquiry number for this project is **GATHER1769** and the Event Primary Reference Number is **46519**.

2 METHOD STATEMENT

2.1 Introduction

The archaeological mitigation will be undertaken as a Photographic Survey, as defined by *Understanding Historic Buildings: A Guide to Good Recording Practice* (Historic England, 2016). A photographic survey provides a very full visual record, but without a written or drawn survey at a comparable level of detail. A comprehensive photographic survey may be called for when recording a building for which there is no need for detailed analysis. It may also be appropriate for recording a building of well-known type which is under threat, but where existing documentation is in other respects adequate, or when for some other reason drawings and historical analysis are not required. The Photographic Survey will incorporate **the exterior and interior of the original core of the 19th and early 20th century building(s) and the exterior of the range of buildings that are post-1960s** (pers. comm. GAPS) as detailed in *Dewis Architecture Drawing No. D907.04* (Figure 02) and *Dewis Architecture Drawing No. D907.03* (Figure 03).

2.2 Photographic Record

The Photographic Record will include the following as a minimum:

- A general view or views of the buildings (in its wider setting or landscape).
- The building's external appearance. Typically a series of oblique views that will show all external elevations of the building, and give an overall impression of its size, shape and immediate setting. Where individual elevations include complex historical information it may also be appropriate to take views at right-angles to the plane of the elevation. Images received suggest oblique views will be necessary, due to the proximity of neighbouring buildings restricting space. In this instance, there is limited access and visibility of the north elevation, which represents the side of the building; an oblique image will be taken of this elevation.
- The overall appearance of the principal rooms and circulation areas. Based on *Dewis Architecture Drawing No. D907.04* (Figure 02) and *Dewis Architecture Drawing No. D907.03* (Figure 03).
- Any external or internal detail, structural or decorative, which is relevant to the building's design, development and use, with scale where appropriate.
- A photographic register detailing the photo number, the location and direction of each view, and the composition of the shot.
- Photograph locations and directions of view marked on plans. In this instance, *Dewis Architecture Drawing No. D907.03* (Figure 03) will be used.
- Photographs should be of archive quality using a digital SLR (minimum 12 megapixel).
- Photographs, where appropriate (i.e. not general shots) should include a clearly visible, graduated metric scale.
- Photographs should be adequately lit and not blurry. With all images checked on site.

Photographic images will be taken using a digital SLR (Nikon D5100) camera set to maximum resolution (4928 × 3264; 16.2 effective megapixels) in RAW format. Camera tripods and poles will be used for the elevations and where practical elsewhere. A photographic record will maintained on site using GAT pro-formas ([Appendix III](#)) and digitised in Microsoft Excel and Access as part of the fieldwork archive and dissemination process; the archive numbering system will start from G2762_001. The location and orientation of photographs taken will be recorded on a scaled plan and digitised for final

reporting. The photographic images will then be converted to TIFF for final archiving using Adobe Photoshop.

2.3 Written Record

As a minimum, the Written Record will comprise of:

- The precise location of the building as an address and in the form of a National Grid reference.
- A note of any statutory designation (that is, listing, scheduling, Register of Historic Parks and Gardens, conservation area), where applicable. Information on statutory designations can be found on the CADW website. Non-statutory designations (local lists) may be added. *Note: the building is not listed and does not currently have a Primary Reference Number assigned by the regional Historic Environment Record.*
- The date when the record was made, the name(s) of the recorder(s) and the location of any archive material.
- A summary statement. This account should describe the buildings type and purpose, historically and at present, its materials and possible date(s), so far as these are apparent from a superficial inspection.. The photographic record will aim to document evidence for any phasing.

A basic written record will be completed using a building record pro-forma ([Appendix II](#)) and a room record pro-forma ([Appendix III](#)) to assist with archiving and reporting.

2.4 Drawn Record

As a minimum, the Drawn Record will comprise of:

- A plan showing the location and direction of view of each photograph. In this instance, the scaled plans detailed in *Dewis Architecture Drawing No. D907.03* (Figure 03) will be used for reference and as a base plan.

2.5 Selection Strategy & Data Management Plan

As stated in *Standard and guidance for the creation, compilation, transfer and deposition of archaeological archives* (Chartered Institute for Archaeologists, 2020), para. 3.3.1, “Project specifications, research designs or similar documents should include a project- specific Selection Strategy and a Data Management Plan. The Chartered Institute for Archaeologists states that “(I)t is widely accepted that not all the records and materials collected or created during the course of an Archaeological Project require preservation in perpetuity. These records and materials constitute the Working Project Archive which will be subject to Selection, in order to establish what will be retained for long-term curation” (<https://www.archaeologists.net/selection-toolkit>). The working project archive in this instance will comprise digital data including photographic data, documentation and written data, as well as paper records, including project pro-formas. The Data Management Plan will be stored on a project specific form in the GAT project database (format: *Microsoft Access*) and the Selection Strategy will be based on a GAT pro-forma (cf. [Appendix IV](#)) that will be appended to the final report.

This working project archive data will be processed as follows:

1. Pro-formas: all cross referenced and scanned for digital archiving;
2. Photographic Metadata: cross-referenced with all pro-formas and completed in *Microsoft Excel*;

Information from these will be used to compile the project report. The physical archive will be stored in a designated project folder and the location confirmed in the Data Management Plan; the digital dataset will be stored on a dedicated Trust server, with the location confirmed in the Data Management Plan via a specific hyperlink. External datasets for the HER and RCAHMW are as defined in the dissemination strategy below.

2.6 Reporting

The project report will include the following:

1. Front cover;
 2. Inner cover;
 3. Figures and Plates List;
 4. Non-technical summary (Welsh/English);
 5. Introduction;
 6. Methodology;
 7. Results;
 8. Conclusion
 9. Bibliography;
 10. Figures; inc.:
 - location plan;
 - location and orientation of images taken
 11. Plates; inc.
 - Illustrative examples from the Photographic Survey
 12. Appendix I (approved specification);
 13. Appendix II (Photographic metadata);
 14. Appendix III (Selection Strategy)
- Back cover.

2.7 Dissemination & Archiving

The following dissemination and archiving of the report and digital dataset will be applied:

- A digital report will be provided to *Carlton (North Wales) Limited* and Gwynedd Archaeological Planning Service (draft report then final report);
- A digital report will be provided to the regional Historic Environment Record; this will be submitted within six months of project completion, along with a digital dataset comprising an Event PRN summary. The report and dataset will be submitted in accordance with the required standards set out in *Guidance for the Submission of Data to the Welsh Historic Environment Records (HERs)* (Version 2); and
- A digital report and digital archive dataset will be provided to Royal Commission on Ancient and Historic Monuments, Wales (final report only), in accordance with the *RCAHMW Guidelines for Digital Archives Version 1*. The dataset will be prepared in the format required by RCAHMW and will include:
 - Photographic metadata (Microsoft Access);
 - Photographic archive (TIFF format);
 - Project Information form (Excel);
 - File Information form (Excel) – Microsoft Word report text final;
 - File Information form (Excel) – Photographic metadata (general);
 - File Information form (Excel) – Adobe PDF report final; and
 - File Information form (Excel) - Photographic metadata (detail).

3 PERSONNEL

The project will be managed by John Roberts, Principal Archaeologist GAT Contracts Section and undertaken by a Project Archaeologist. The Project Archaeologist will be responsible for the completion of all on site pro-formas and the photographic archive, as well as for submitting a draft final report for project manager review and approval. The report will then be submitted as per the arrangements defined above.

4 HEALTH AND SAFETY

A site specific risk assessment will be prepared and will be reviewed by the GAT Project Archaeologist in advance of works, with any additional risks identified on site highlighted in the dynamic risks section and appropriate mitigation undertaken. The GAT attendee will be issued with required personal safety equipment, including high visibility jacket, steel toe-capped boots and safety helmet. All site work will be managed and undertaken in accordance with the GAT Health & Safety Policy and Covid-19 guidelines.

If available, an asbestos survey will be consulted prior to and during site attendance.

5 SOCIAL MEDIA

One of the key aims in the GAT mission statement is to improve the understanding, conservation and promotion of the historic environment in our area and inform and educate the wider public. To help achieve this, GAT maintains an active social media presence and seeks all opportunities to promote our projects and results. With permission, GAT would like the opportunity to promote our work on this scheme through our social media platforms. This could include social media postings during our attendance on site as well as any postings to highlight results. In all instances, approval will be sought from client prior to any postings.

6 INSURANCE

6.1 Public/Products Liability

Limit of Indemnity- £5,000,000 any one event in respect of Public Liability

INSURER Aviva Insurance Limited

POLICY TYPE Public Liability

POLICY NUMBER 24765101CHC/UN/000375

EXPIRY DATE 21/06/2023

6.2 Employers Liability

Limit of Indemnity- £10,000,000 any one occurrence.

The cover has been issued on the insurers standard policy form and is subject to their usual terms and conditions. A copy of the policy wording is available on request.

INSURER Aviva Insurance Limited

POLICY TYPE Employers Liability

POLICY NUMBER 24765101 CHC / UN/000375

EXPIRY DATE 21/06/2023

6.3 Professional Indemnity

Limit of Indemnity- £5,000,000 in respect of each and every claim

INSURER Hiscox Insurance Company Limited

POLICY TYPE Professional Indemnity

POLICY NUMBER 9446015

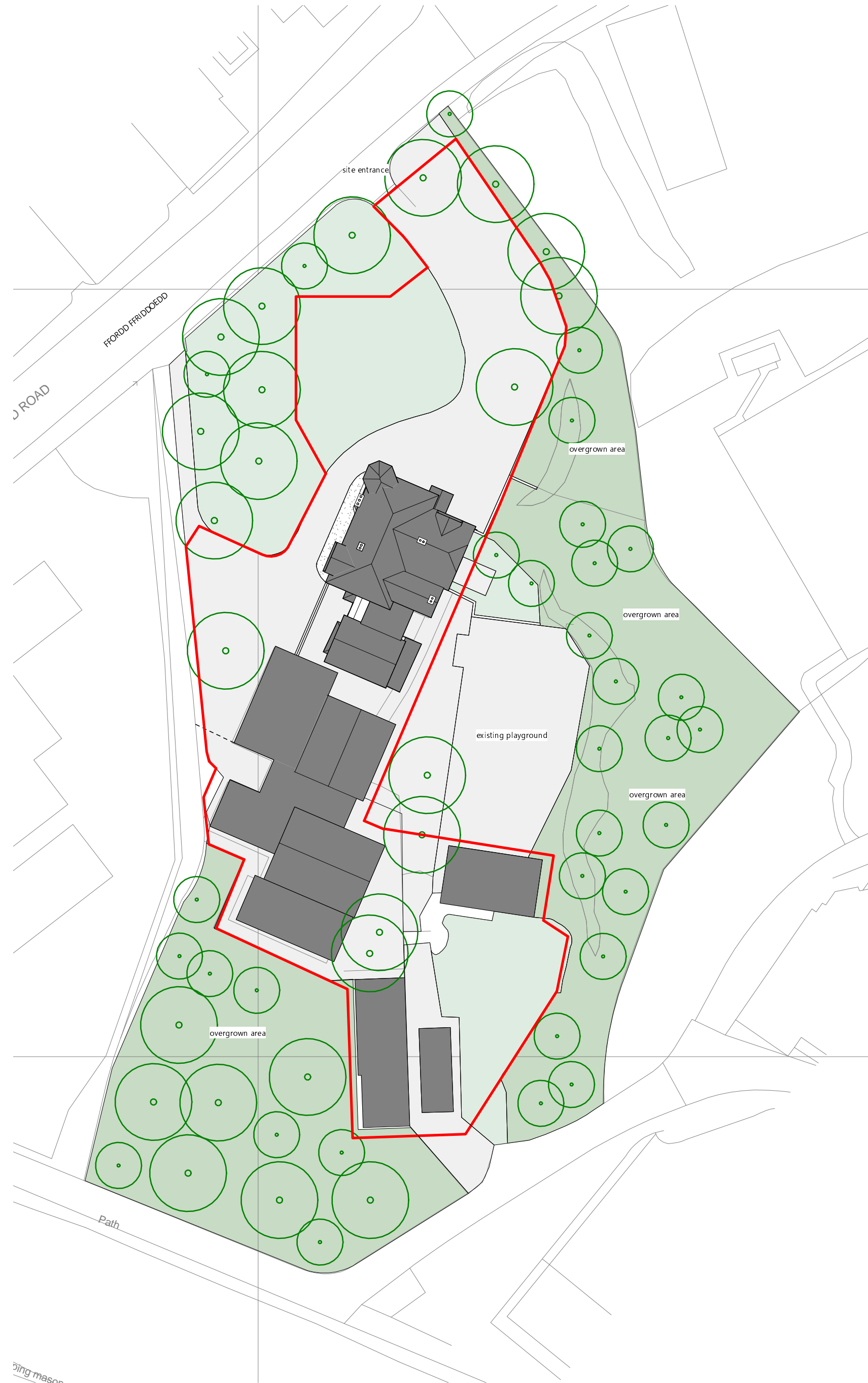
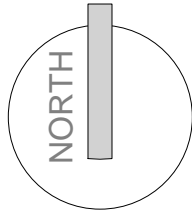
EXPIRY DATE 22/07/2023

7 SOURCES CONSULTED

1. Chartered Institute for Archaeologists, 2020, Standard and Guidance for the Archaeological Investigation and Recording of Standing Buildings or Structures.
2. Chartered Institute for Archaeologists, 2020, Standard and guidance for the collection, documentation, conservation and research of archaeological materials.
3. English Heritage, 1991, Management of Archaeological Projects (MAP2).
4. Historic England, 2015, Management of Research Projects in the Historic Environment (MoRPHE).
5. Historic England, 2016. *Understanding Historic Buildings: A Guide to Good Recording Practice*.
6. Royal Commission on Ancient and Historic Monuments of Wales, 2015, Guidelines for digital archives.
7. The Welsh Archaeological Trusts, 2022. *Guidance for the Submission of Data to the Welsh Historic Environment Records (HERs) Version 2*.

FIGURE 01

Site Location. Dewis Architecture Drawing No. D907.02a. Scale: As Shown.



Existing Site Plan
1 : 500

A	Design development	12.07.2022	AR
Rev	Description	Date	Issued by




Menai House
Holyhead Road
Llanfairpwll
Anglesey
LL61 5UJ

01248 715006
info@dewis.uk.com
www.dewis.uk.com

Syrfewyr Siartredig Adeiladu
Penseiri Siartredig
Rheolwyr Prosiect
Ymgynghorwyr Pensaernïol
Technolegwyr Pensaernïol Siartredig
Ymgynghorwyr Adeiladau Hanesyddol

Chartered Building Surveyors
Chartered Architects
Project Managers
Architectural Consultants
Chartered Architectural Technologists
Historic Building Consultants

Client			
			
Project			
FORMER HILLGROVE SCHOOL			
Drawing			
EXISTING SITE PLAN			
Drwg. No.	Rev.	Scale	Drawn by
D907.02	A	1 : 500	AR
Plot Date	Size	Issue Status	Approved by
05/07/22	A1	preliminary	-

This drawing must be read in conjunction with all related drawings.
All dimensions must be checked and verified on site before commencing any work or producing shop drawings.
The originator should be notified immediately of any discrepancies.
Only figured dimensions are to be worked to.
This drawing is copyright and remains the property of DEWIS architecture.

FIGURE 02

Reproduction of Dewis Architecture Drawing No. D907.04. Scale: As Shown.



Existing North Elevation
1 : 100



Existing South Elevation 1
1 : 100



Existing West Elevation
1 : 100



Existing East Elevation
1 : 100



Existing South Elevation 2
1 : 100


Rev	Description	Date	Issued by
<div><div><div><p>Menai House Holyhead Road Llanfairpwll Anglesey LL61 5UJ</p><p>01248 715006 info@dewis.uk.com www.dewis.uk.com</p></div></div><div><p>Syrfewyr Siartredig Adeiladu Penseiri Siartredig Rheolwyr Proiect Ymgynghorwyr Pensaernïol Ymgynghorwyr Adeiladau Hanesyddol</p><p>Chartered Building Surveyors Chartered Architects Project Managers Architectural Consultants Chartered Architectural Technologists Historic Building Consultants</p></div></div>			
Client			
			
Project			
FORMER HILLGROVE SCHOOL			
Drawing			
EXISTING ELEVATIONS			
Drwg. No. D907.04	Rev.	Scale 1 : 100	Drawn by AR
Plot Date 24/06/22	Size A1	Issue Status preliminary	Approved by -
<p>This drawing must be read in conjunction with all related drawings. All dimensions must be checked and verified on site before commencing any work or producing shop drawings. The originator should be notified immediately of any discrepancies. Only figured dimensions are to be worked to. This drawing is copyright and remains the property of DEWIS architecture.</p>			

FIGURE 03

Reproduction of *Dewis Architecture Drawing No. D907.03*. Scales: As Shown.

APPENDIX I

Gwynedd Archaeological Trust Photographic Metadata Pro-Forma



Digital Photographic Record

Include main context numbers for each shot, drawing numbers for sections and any other relevant numbers for cross referencing.

Delete any unwanted photos **immediately** from the camera.

Regularly upload photographs to computer.

[illegible]

APPENDIX II

Gwynedd Archaeological Trust Building Record pro-forma

YMDDIRIEDOLAETH ARCHAEOLEGOL GWYNEDD ARCHAEOLOGICAL TRUST		
BASIC RECORDING FORM	Project name	Project number
Feature name		Feature Number
NGR		
<div>Description</div>		
<div>Recommendations for further assessment</div>		
<div>Photographic record numbers</div>		
<div>Digital</div>		
	Visit date	Visit by

APPENDIX III

Gwynedd Archaeological Trust room recording pro-forma

NOTE: Sketch entire floor level with measurements (overleaf)

YMDDIRIEDOLAETH ARCHAEOLEGOL GWYNEDD ARCHAEOLOGICAL TRUST			
ROOM RECORDING FORM		Project name	Project number
Room Number	Floor /Level		
Description			
Photographic record numbers		Scales used	Dimensions Length Width Height
YMDDIRIEDOLAETH ARCHAEOLEGOL GWYNEDD ARCHAEOLOGICAL TRUST			
ROOM RECORDING FORM		Project name	Project number
Room Number	Floor /Level		
Description			
Photographic record numbers		Scales used	Dimensions Length Width Height

	<i>Visit date</i>	<i>Visit by</i>

APPENDIX IV

Gwynedd Archaeological Trust Selection Strategy

G2762_Hillgrove_Bangor

15/12/2022 v2.0

Selection Strategy

Project Information

Project Management

Project Manager	John Roberts john.roberts@heneb.co.uk	
Archaeological Archive Manager	John Roberts john.roberts@heneb.co.uk	
Organisation	Gwynedd Archaeological Trust	
Stakeholders		Date Contacted
Collecting Institution(s)	GAT Historic Environment Record	15/12/2022
	RCAHMMW	On completion of Project Archive
Project Lead / Project Assurance	Tom Fildes, Gwynedd Archaeological Planning Service	14/12/2022
Landowner / Developer	Carlton (North Wales) Limited	13/12/2022

Resources

Resources required Describe the resources required to implement this Selection Strategy, particularly if unusual resources are required.	No unusual resources required outside of GAT normal operating equipment and personnel.
--	--

Context

The full aims and objectives of this project are detailed in the project specific WSI.

- Gwynedd Archaeological Trust has been commissioned by *Carlton (North Wales) Limited on behalf of North Wales Recovery Communities* to undertake archaeological mitigation prior to the re-development of the former Hillgrove School on Ffriddoedd Road Bangor, Gwynedd, LL57 2TW (NGR SH 57137 71825 cf. Figure 01). The school complex is comprised of a high-pitched roof two-storey 19th century house (formerly known as Llwyneithin) with extensive additions that date from the latter half of the 20th century, as detailed on *Dewis Architecture Drawing No. D907.04* (Figure 02) and *Dewis Architecture Drawing No. D907.03* (Figure 03). The development is being undertaken as part of planning application C22/0662/11/LL and Condition 5. The archaeological mitigation has been undertaken in accordance with these requirements and has been commensurate to a Photographic Survey as defined in *Understanding Historic Buildings: A Guide*

to *Good Recording Practice* (Historic England, 2016). A Photographic Survey provides a very full visual record, but without a written or drawn survey at a comparable level of detail. The photographic survey has been undertaken in January 2023

Gwynedd Archaeological Trust. 2022. Hillgrove School, Bangor Written Scheme of Investigation for Archaeological Mitigation: Photographic Survey. Project (G2762).

1 – Digital Data

Stakeholders

John Roberts (GAT Principal Archaeologist)

Selection

All digital data has been collected, stored and selected in lines with the Gwynedd Archaeological Trust (GAT) Data Management Plan located on GAT's servers (available on request).

Following the completion of the fieldwork, a working project archive has been created based on following task list;

1. Pro-formas: all cross referenced and complete; and
2. Photographic Metadata: completed in *Microsoft Access* and cross-referenced with all pro-formas.

All relevant site archive data has been added to a digital project register specific to this project, which has been prepared in *Microsoft Excel*.

This data has been used as the basis for the physical and digital dataset archives. Information from these has been used to compile the project report. The physical archive has been stored in a designated project folder and the location confirmed in the Trust project database; the digital dataset has been stored on a dedicated Trust server, with the location confirmed in the Trust project database via a specific hyperlink. External datasets for the HER and RCAHMW are as defined in the dissemination strategy below. De-selected digital data has been confirmed in an updated digital management plan appended to the final report

De-Selected Digital Data

None

2 – Documents

Stakeholders

John Roberts – Principal Archaeologist, Gwynedd Archaeological Trust;
Sean Derby – Historic Environment Record, Gwynedd Archaeological Trust;
Gareth Edwards, *Head of Knowledge and Understanding, RCAHMW*

Selection

- A digital report has been provided to the regional Historic Environment Record; this has been submitted within six months of project completion (final report only), along with a digital dataset comprising an
- Event PRN summary. The report and dataset has been submitted in accordance with the required standards set out in *Guidance for the Submission of Data to the Welsh Historic Environment Records (HERs)* (Version 2); and
- A digital report and digital archive dataset has been provided to Royal Commission on Ancient and Historic Monuments, Wales (final report only), in accordance with the *RCAHMW Guidelines for Digital Archives Version 1*. The dataset has been prepared in the format required by RCAHMW and includes:
 - Photographic metadata (Microsoft Access);
 - Photographic archive (TIFF format);
 - Project Information form (Excel);
 - File Information form (Excel) – Microsoft Word report text final;
 - File Information form (Excel) – Photographic metadata (general);
 - File Information form (Excel) – Adobe PDF report final; and
 - File Information form (Excel) - Photographic metadata (detail).

De-Selected Documents

None

APPENDIX II

Gwynedd Archaeological Trust Photographic Metadata

PHOTO RECORD NUMBER	SITE SUB- DIVISION	DESCRIPTION	ROOM NUMBER	VIEW FROM	SCALE(S)	REASON FOR PHOTO	CREATOR OF DIGITAL PHOTO	DATE	ORIGINATING ORGANISATION	PLATE
G2762_01	Exterior	View of N elevation of 19th C house	N/A	NE	1m	Photographic Survey for Building Record	Bethan Jones	05/01/2023	Gwynedd Archaeological Trust	1
G2762_02	Exterior	Oblique view of 19th C house	N/A	N	1m	Photographic Survey for Building Record	Bethan Jones	05/01/2023	Gwynedd Archaeological Trust	2
G2762_03	Exterior	Oblique view of early 20th C extension / W elevation of 19th C house	N/A	NW	1m	Photographic Survey for Building Record	Bethan Jones	05/01/2023	Gwynedd Archaeological Trust	3
G2762_04	Exterior	Oblique view of W elevation / 1960's classrooms	N/A	N	1m	Photographic Survey for Building Record	Bethan Jones	05/01/2023	Gwynedd Archaeological Trust	4
G2762_05	Exterior	View of W elevation of classrooms	N/A	NW	1m	Photographic Survey for Building Record	Bethan Jones	05/01/2023	Gwynedd Archaeological Trust	5
G2762_06	Exterior	View of post 1960's classrooms w/ view of early 20th C 'bungalow'	N/A	SW	1m	Photographic Survey for Building Record	Bethan Jones	05/01/2023	Gwynedd Archaeological Trust	6
G2762_07	Exterior	View of S elevation showing school buildings	N/A	S	1m	Photographic Survey for Building Record	Bethan Jones	05/01/2023	Gwynedd Archaeological Trust	7

PHOTO RECORD NUMBER	SITE SUB- DIVISION	DESCRIPTION	ROOM NUMBER	VIEW FROM	SCALE(S)	REASON FOR PHOTO	CREATOR OF DIGITAL PHOTO	DATE	ORIGINATING ORGANISATION	PLATE
G2762_08	Exterior	Oblique view of school buildings including early 20th C 'bungalow'	N/A	S	not used	Photographic Survey for Building Record	Bethan Jones	05/01/2023	Gwynedd Archaeological Trust	8
G2762_09	Exterior	View of school buildings	N/A	S	1m	Photographic Survey for Building Record	Bethan Jones	05/01/2023	Gwynedd Archaeological Trust	9
G2762_10	Exterior	Oblique view of school buildings	N/A	S	1m	Photographic Survey for Building Record	Bethan Jones	05/01/2023	Gwynedd Archaeological Trust	10
G2762_11	Exterior	Oblique view of school buildings w/ early 20th C 'bungalow'	N/A	E	1m	Photographic Survey for Building Record	Bethan Jones	05/01/2023	Gwynedd Archaeological Trust	11
G2762_12	Exterior	View of archway in school grounds	N/A	N	1m	Photographic Survey for Building Record	Bethan Jones	05/01/2023	Gwynedd Archaeological Trust	12
G2762_13	Exterior	Oblique view of E elevation of 19th C house w/ extension	N/A	S	1m	Photographic Survey for Building Record	Bethan Jones	05/01/2023	Gwynedd Archaeological Trust	13
G2762_14	Exterior	Oblique view of early 20th C building incorporated into school	N/A	NE	1m	Photographic Survey for Building Record	Bethan Jones	05/01/2023	Gwynedd Archaeological Trust	14

PHOTO RECORD NUMBER	SITE SUB- DIVISION	DESCRIPTION	ROOM NUMBER	VIEW FROM	SCALE(S)	REASON FOR PHOTO	CREATOR OF DIGITAL PHOTO	DATE	ORIGINATING ORGANISATION	PLATE
G2762_15	Exterior	Oblique view of E elevation of 19th C house	N/A	S	1m	Photographic Survey for Building Record	Bethan Jones	05/01/2023	Gwynedd Archaeological Trust	15
G2762_16	Exterior	View of school buildigns adjacent to 19th C house	N/A	E	1m	Photographic Survey for Building Record	Bethan Jones	05/01/2023	Gwynedd Archaeological Trust	16
G2762_17	Exterior	View of courtyard area	N/A	E	1m	Photographic Survey for Building Record	Bethan Jones	05/01/2023	Gwynedd Archaeological Trust	17
G2762_18	Exterior	View of courtyard area	N/A	W	1m	Photographic Survey for Building Record	Bethan Jones	05/01/2023	Gwynedd Archaeological Trust	18
G2762_19	Exterior	Oblique view of 19th C house w/ walled garden	N/A	N	not used	Photographic Survey for Building Record	Bethan Jones	05/01/2023	Gwynedd Archaeological Trust	19
G2762_20	Exterior	Oblique view of E elevation w/ schoolyard	N/A	E	not used	Photographic Survey for Building Record	Bethan Jones	05/01/2023	Gwynedd Archaeological Trust	20
G2762_21	Exterior	View of porch w/ tile floor	N/A	NE	1m	Photographic Survey for Building Record	Bethan Jones	05/01/2023	Gwynedd Archaeological Trust	21

PHOTO RECORD NUMBER	SITE SUB- DIVISION	DESCRIPTION	ROOM NUMBER	VIEW FROM	SCALE(S)	REASON FOR PHOTO	CREATOR OF DIGITAL PHOTO	DATE	ORIGINATING ORGANISATION	PLATE
G2762_22	Room 1	View into room 1 from entrance	Entrance lobby	NE	1m	Photographic Survey for Building Record	Bethan Jones	05/01/2023	Gwynedd Archaeological Trust	22
G2762_23	Room 1	View of store	Entrance lobby	W	1m	Photographic Survey for Building Record	Bethan Jones	05/01/2023	Gwynedd Archaeological Trust	23
G2762_24	Room 1	View of glass door entrance into hallway	Entrance lobby	N	1m	Photographic Survey for Building Record	Bethan Jones	05/01/2023	Gwynedd Archaeological Trust	24
G2762_25	Room 2	View of hallway	Hallway (2)	SW	1m	Photographic Survey for Building Record	Bethan Jones	05/01/2023	Gwynedd Archaeological Trust	25
G2762_26	Room 2	View of cupboard within hall/alcove	Hallway (2)	W	1m	Photographic Survey for Building Record	Bethan Jones	05/01/2023	Gwynedd Archaeological Trust	26
G2762_27	Room 2	View of staircase	Hallway (2)	W	1m	Photographic Survey for Building Record	Bethan Jones	05/01/2023	Gwynedd Archaeological Trust	27
G2762_28	Room 2	View of hallway (ceiling detail)	Hallway (2)	S	1m	Photographic Survey for Building Record	Bethan Jones	05/01/2023	Gwynedd Archaeological Trust	28

PHOTO RECORD NUMBER	SITE SUB- DIVISION	DESCRIPTION	ROOM NUMBER	VIEW FROM	SCALE(S)	REASON FOR PHOTO	CREATOR OF DIGITAL PHOTO	DATE	ORIGINATING ORGANISATION	PLATE
G2762_29	Room 3	View of entrance into lounge	Lounge (3)	NW	1m	Photographic Survey for Building Record	Bethan Jones	05/01/2023	Gwynedd Archaeological Trust	29
G2762_30	Room 3	View of room 3 from the W	Lounge (3)	W	1m	Photographic Survey for Building Record	Bethan Jones	05/01/2023	Gwynedd Archaeological Trust	30
G2762_31	Room 3	View of windows in lounge	Lounge (3)	S	1m	Photographic Survey for Building Record	Bethan Jones	05/01/2023	Gwynedd Archaeological Trust	31
G2762_32	Room 3	View of seating area in lounge (3)	Lounge (3)	S	1m	Photographic Survey for Building Record	Bethan Jones	05/01/2023	Gwynedd Archaeological Trust	32
G2762_33	Room 3	View of gas fireplace and stained glass window	Lounge (3)	SE	1m	Photographic Survey for Building Record	Bethan Jones	05/01/2023	Gwynedd Archaeological Trust	33
G2762_34	Room 3	View of window and gas fireplace	Lounge (3)	SE	1m	Photographic Survey for Building Record	Bethan Jones	05/01/2023	Gwynedd Archaeological Trust	34
G2762_35	Room 4	View of window in library (4)	Library (4)	NE	1m	Photographic Survey for Building Record	Bethan Jones	05/01/2023	Gwynedd Archaeological Trust	35

PHOTO RECORD NUMBER	SITE SUB- DIVISION	DESCRIPTION	ROOM NUMBER	VIEW FROM	SCALE(S)	REASON FOR PHOTO	CREATOR OF DIGITAL PHOTO	DATE	ORIGINATING ORGANISATION	PLATE
G2762_36	Room 4	View of bookcases and former fireplace	Library (4)	NW	1m	Photographic Survey for Building Record	Bethan Jones	05/01/2023	Gwynedd Archaeological Trust	36
G2762_37	Room 4	View of entrance into room 4 w/ map wall feature	Library (4)	SW	1m	Photographic Survey for Building Record	Bethan Jones	05/01/2023	Gwynedd Archaeological Trust	37
G2762_38	Room 4	View of room 4 from SE	Library (4)	SE	1m	Photographic Survey for Building Record	Bethan Jones	05/01/2023	Gwynedd Archaeological Trust	38
G2762_39	Room 5	View of windows and outside exit in room 5	Study (5)	NE	1m	Photographic Survey for Building Record	Bethan Jones	05/01/2023	Gwynedd Archaeological Trust	39
G2762_40	Room 5	View of exit to outdoors	Study (5)	NW	1m	Photographic Survey for Building Record	Bethan Jones	05/01/2023	Gwynedd Archaeological Trust	40
G2762_41	Room 5	View of fireplace and entrance into study	Study (5)	SW	1m	Photographic Survey for Building Record	Bethan Jones	05/01/2023	Gwynedd Archaeological Trust	41
G2762_42	Room 5	View of fireplace and window	Study (5)	SE	1m	Photographic Survey for Building Record	Bethan Jones	05/01/2023	Gwynedd Archaeological Trust	42

PHOTO RECORD NUMBER	SITE SUB- DIVISION	DESCRIPTION	ROOM NUMBER	VIEW FROM	SCALE(S)	REASON FOR PHOTO	CREATOR OF DIGITAL PHOTO	DATE	ORIGINATING ORGANISATION	PLATE
G2762_43	Room 5	View of fireplace	Study (5)	S	1m	Photographic Survey for Building Record	Bethan Jones	05/01/2023	Gwynedd Archaeological Trust	43
G2762_44	Room 5	View of window alcove	Study (5)	E	1m	Photographic Survey for Building Record	Bethan Jones	05/01/2023	Gwynedd Archaeological Trust	44
G2762_45	Room 6	View of corridor 6 w/ servant bells	Corridor (6)	E	1m	Photographic Survey for Building Record	Bethan Jones	05/01/2023	Gwynedd Archaeological Trust	45
G2762_46	Room 6	View of corridor 6 and 8	Corridor (6)	NW	1m	Photographic Survey for Building Record	Bethan Jones	05/01/2023	Gwynedd Archaeological Trust	46
G2762_47	Room 7	View of W.C.	Toilet (7)	N	1m	Photographic Survey for Building Record	Bethan Jones	05/01/2023	Gwynedd Archaeological Trust	47
G2762_48	Room 7	View of toilet (7)	Toilet (7)	N	1m	Photographic Survey for Building Record	Bethan Jones	05/01/2023	Gwynedd Archaeological Trust	48
G2762_49	Room 10	View of room 10 (laundry)	Laundry (10)	SE	1m	Photographic Survey for Building Record	Bethan Jones	05/01/2023	Gwynedd Archaeological Trust	49

PHOTO RECORD NUMBER	SITE SUB- DIVISION	DESCRIPTION	ROOM NUMBER	VIEW FROM	SCALE(S)	REASON FOR PHOTO	CREATOR OF DIGITAL PHOTO	DATE	ORIGINATING ORGANISATION	PLATE
G2762_50	Room 10	View of built-in cupboard in room 10	Laundry (10)	NE	1m	Photographic Survey for Building Record	Bethan Jones	05/01/2023	Gwynedd Archaeological Trust	50
G2762_51	Room 8	View of corridor (8)	Corridor (8)	W	1m	Photographic Survey for Building Record	Bethan Jones	05/01/2023	Gwynedd Archaeological Trust	51
G2762_52	Room 8	View of corridor (8) and staircase	Corridor (8)	NW	1m	Photographic Survey for Building Record	Bethan Jones	05/01/2023	Gwynedd Archaeological Trust	52
G2762_53	Room 9	View into storage (9)	Storage (9)	E	1m	Photographic Survey for Building Record	Bethan Jones	05/01/2023	Gwynedd Archaeological Trust	53
G2762_54	Room 11	View of inglenook and glass doors in room 11	Room 11	SW	1m	Photographic Survey for Building Record	Bethan Jones	05/01/2023	Gwynedd Archaeological Trust	54
G2762_55	Room 11	View of storage cupboard and inglenook	Room 11	SE	1m	Photographic Survey for Building Record	Bethan Jones	05/01/2023	Gwynedd Archaeological Trust	55
G2762_56	Room 11	View of entrance into room 11	Room 11	NE	1m	Photographic Survey for Building Record	Bethan Jones	05/01/2023	Gwynedd Archaeological Trust	56

PHOTO RECORD NUMBER	SITE SUB- DIVISION	DESCRIPTION	ROOM NUMBER	VIEW FROM	SCALE(S)	REASON FOR PHOTO	CREATOR OF DIGITAL PHOTO	DATE	ORIGINATING ORGANISATION	PLATE
G2762_57	Room 11	View of glass doors leading into walled garden	Room 11	NW	1m	Photographic Survey for Building Record	Bethan Jones	05/01/2023	Gwynedd Archaeological Trust	57
G2762_58	Room 12	View of kitchen	Kitchen (12)	SE	1m	Photographic Survey for Building Record	Bethan Jones	05/01/2023	Gwynedd Archaeological Trust	58
G2762_59	Room 12	View of entrance to kitchen w/ window and arched inglenook	Kitchen (12)	NW	1m	Photographic Survey for Building Record	Bethan Jones	05/01/2023	Gwynedd Archaeological Trust	59
G2762_60	Room 13	View of taps and W.C.'s	Toilet (13)	N	1m	Photographic Survey for Building Record	Bethan Jones	05/01/2023	Gwynedd Archaeological Trust	60
G2762_61	Room 13	View of urinals	Toilet (13)	NW	1m	Photographic Survey for Building Record	Bethan Jones	05/01/2023	Gwynedd Archaeological Trust	61
G2762_62	Room 13	Possible former showers	Toilet (13)	SW	1m	Photographic Survey for Building Record	Bethan Jones	05/01/2023	Gwynedd Archaeological Trust	62
G2762_63	Room 13	Tap room showing original plaster/paint work	Toilet (13)	SW	1m	Photographic Survey for Building Record	Bethan Jones	05/01/2023	Gwynedd Archaeological Trust	63

PHOTO RECORD NUMBER	SITE SUB- DIVISION	DESCRIPTION	ROOM NUMBER	VIEW FROM	SCALE(S)	REASON FOR PHOTO	CREATOR OF DIGITAL PHOTO	DATE	ORIGINATING ORGANISATION	PLATE
G2762_64	Room 13	View of entrance into toilets	Toilet (13)	S	1m	Photographic Survey for Building Record	Bethan Jones	05/01/2023	Gwynedd Archaeological Trust	64
G2762_65	Room 14	View of store room 14	Store (14)	NE	1m	Photographic Survey for Building Record	Bethan Jones	05/01/2023	Gwynedd Archaeological Trust	65
G2762_66	Room 14	View of windows	Store (14)	SE	1m	Photographic Survey for Building Record	Bethan Jones	05/01/2023	Gwynedd Archaeological Trust	66
G2762_67	Room 14	View of entrance	Store (14)	SW	1m	Photographic Survey for Building Record	Bethan Jones	05/01/2023	Gwynedd Archaeological Trust	67
G2762_68	Room 2	Staircase leading into landing (16)	Room 2	N	1m	Photographic Survey for Building Record	Bethan Jones	05/01/2023	Gwynedd Archaeological Trust	68
G2762_69	Room 16	View of landing (16) showing bannister and doors	Landing	S	1m	Photographic Survey for Building Record	Bethan Jones	05/01/2023	Gwynedd Archaeological Trust	69
G2762_70	Room 16	View of landing (16) showing bannister and doors	Landing	N	1m	Photographic Survey for Building Record	Bethan Jones	05/01/2023	Gwynedd Archaeological Trust	70

PHOTO RECORD NUMBER	SITE SUB- DIVISION	DESCRIPTION	ROOM NUMBER	VIEW FROM	SCALE(S)	REASON FOR PHOTO	CREATOR OF DIGITAL PHOTO	DATE	ORIGINATING ORGANISATION	PLATE
G2762_71	Room 16	View into bedroom (17)	Landing	W	1m	Photographic Survey for Building Record	Bethan Jones	05/01/2023	Gwynedd Archaeological Trust	71
G2762_72	Room 17	View of window	Bedroom (17)	SW	1m	Photographic Survey for Building Record	Bethan Jones	05/01/2023	Gwynedd Archaeological Trust	72
G2762_73	Room 17	View of entrance and boiler cupboard	Bedroom (17)	SE	1m	Photographic Survey for Building Record	Bethan Jones	05/01/2023	Gwynedd Archaeological Trust	73
G2762_74	Room 17	View of window and square alcove	Bedroom (17)	NE	1m	Photographic Survey for Building Record	Bethan Jones	05/01/2023	Gwynedd Archaeological Trust	74
G2762_75	Room 16	View into bedroom (18)	Landing	W	1m	Photographic Survey for Building Record	Bethan Jones	05/01/2023	Gwynedd Archaeological Trust	75
G2762_76	Room 18	View of entrance and fireplace	Bedroom (18)	E	1m	Photographic Survey for Building Record	Bethan Jones	05/01/2023	Gwynedd Archaeological Trust	76
G2762_77	Room 18	View of window	Bedroom (18)	W	1m	Photographic Survey for Building Record	Bethan Jones	05/01/2023	Gwynedd Archaeological Trust	77

PHOTO RECORD NUMBER	SITE SUB- DIVISION	DESCRIPTION	ROOM NUMBER	VIEW FROM	SCALE(S)	REASON FOR PHOTO	CREATOR OF DIGITAL PHOTO	DATE	ORIGINATING ORGANISATION	PLATE
G2762_78	Room 18	View of fireplace and built-in bookshelf	Bedroom (18)	SW	1m	Photographic Survey for Building Record	Bethan Jones	05/01/2023	Gwynedd Archaeological Trust	78
G2762_79	Room 19	View into room 19	Room 19	SW	1m	Photographic Survey for Building Record	Bethan Jones	05/01/2023	Gwynedd Archaeological Trust	79
G2762_80	Room 19	View of entrance into room 19	Room 19	NE	1m	Photographic Survey for Building Record	Bethan Jones	05/01/2023	Gwynedd Archaeological Trust	80
G2762_81	Room 20	View of entrance into bedroom 20	Bedroom (20)	N	1m	Photographic Survey for Building Record	Bethan Jones	05/01/2023	Gwynedd Archaeological Trust	81
G2762_82	Room 20	Blocked up fireplace in bedroom 20	Bedroom (20)	E	1m	Photographic Survey for Building Record	Bethan Jones	05/01/2023	Gwynedd Archaeological Trust	82
G2762_83	Room 20	View of fireplace and turret windows	Bedroom (20)	S	1m	Photographic Survey for Building Record	Bethan Jones	05/01/2023	Gwynedd Archaeological Trust	83
G2762_84	Room 20	Close-up view of turret windows	Bedroom (20)	S	1m	Photographic Survey for Building Record	Bethan Jones	05/01/2023	Gwynedd Archaeological Trust	84

PHOTO RECORD NUMBER	SITE SUB- DIVISION	DESCRIPTION	ROOM NUMBER	VIEW FROM	SCALE(S)	REASON FOR PHOTO	CREATOR OF DIGITAL PHOTO	DATE	ORIGINATING ORGANISATION	PLATE
G2762_85	Room 21	Entrance into bedroom and fireplace	Bedroom (21)	N	1m	Photographic Survey for Building Record	Bethan Jones	05/01/2023	Gwynedd Archaeological Trust	85
G2762_86	Room 21	View of window, desk area and fireplace	Bedroom (21)	E	1m	Photographic Survey for Building Record	Bethan Jones	05/01/2023	Gwynedd Archaeological Trust	86
G2762_87	Room 22	View of windows	Bedroom (22)	N	1m	Photographic Survey for Building Record	Bethan Jones	05/01/2023	Gwynedd Archaeological Trust	87
G2762_88	Room 22	View of fireplace	Bedroom (22)	S	1m	Photographic Survey for Building Record	Bethan Jones	05/01/2023	Gwynedd Archaeological Trust	88
G2762_89	Room 22	View of window and fireplace	Bedroom (22)	S	1m	Photographic Survey for Building Record	Bethan Jones	05/01/2023	Gwynedd Archaeological Trust	89
G2762_90	Room 22	View of en-suite	Bedroom (22)	NW	not used	Photographic Survey for Building Record	Bethan Jones	05/01/2023	Gwynedd Archaeological Trust	90
G2762_91	Room 23	View of corridor (23)	Corridor (23)	W	1m	Photographic Survey for Building Record	Bethan Jones	05/01/2023	Gwynedd Archaeological Trust	91

PHOTO RECORD NUMBER	SITE SUB- DIVISION	DESCRIPTION	ROOM NUMBER	VIEW FROM	SCALE(S)	REASON FOR PHOTO	CREATOR OF DIGITAL PHOTO	DATE	ORIGINATING ORGANISATION	PLATE
G2762_92	Room 23	View of corridor (23)	Corridor (23)	E	1m	Photographic Survey for Building Record	Bethan Jones	05/01/2023	Gwynedd Archaeological Trust	92
G2762_93	Room 24	View of bathroom (24)	Bathroom (24)	N	1m	Photographic Survey for Building Record	Bethan Jones	05/01/2023	Gwynedd Archaeological Trust	93
G2762_94	Room 24	View of bathroom (24)	Bathroom (24)	W	1m	Photographic Survey for Building Record	Bethan Jones	05/01/2023	Gwynedd Archaeological Trust	94
G2762_95	Room 24	View of shower	Bathroom (24)	E	1m	Photographic Survey for Building Record	Bethan Jones	05/01/2023	Gwynedd Archaeological Trust	95
G2762_96	Room 24	View into bathroom	Bathroom (24)	N	1m	Photographic Survey for Building Record	Bethan Jones	05/01/2023	Gwynedd Archaeological Trust	96
G2762_97	Room 25	View of room 25 (Storage)	Storage (25)	N	1m	Photographic Survey for Building Record	Bethan Jones	05/01/2023	Gwynedd Archaeological Trust	97
G2762_98	Room 26	View of corridor (26)	Corridor (26)	N	1m	Photographic Survey for Building Record	Bethan Jones	05/01/2023	Gwynedd Archaeological Trust	98

PHOTO RECORD NUMBER	SITE SUB- DIVISION	DESCRIPTION	ROOM NUMBER	VIEW FROM	SCALE(S)	REASON FOR PHOTO	CREATOR OF DIGITAL PHOTO	DATE	ORIGINATING ORGANISATION	PLATE
G2762_99	Room 26	View of corridor (26)	Corridor (26)	S	1m	Photographic Survey for Building Record	Bethan Jones	05/01/2023	Gwynedd Archaeological Trust	99
G2762_100	Room 27	View of window and sink	Room 27	N	1m	Photographic Survey for Building Record	Bethan Jones	05/01/2023	Gwynedd Archaeological Trust	100
G2762_101	Room 27	View of storage	Room 27	W	1m	Photographic Survey for Building Record	Bethan Jones	05/01/2023	Gwynedd Archaeological Trust	101
G2762_102	Room 27	View of entrance	Room 27	S	1m	Photographic Survey for Building Record	Bethan Jones	05/01/2023	Gwynedd Archaeological Trust	102
G2762_103	Room 28	View of storage cupboard (28)	Storage (28)	S	1m	Photographic Survey for Building Record	Bethan Jones	05/01/2023	Gwynedd Archaeological Trust	103
G2762_104	Room 29	View of W.C. (29)	Toilet (29)	W	1m	Photographic Survey for Building Record	Bethan Jones	05/01/2023	Gwynedd Archaeological Trust	104
G2762_105	Room 30	View of W.C. (30)	Toilet (30)	W	1m	Photographic Survey for Building Record	Bethan Jones	05/01/2023	Gwynedd Archaeological Trust	105

PHOTO RECORD NUMBER	SITE SUB- DIVISION	DESCRIPTION	ROOM NUMBER	VIEW FROM	SCALE(S)	REASON FOR PHOTO	CREATOR OF DIGITAL PHOTO	DATE	ORIGINATING ORGANISATION	PLATE
G2762_106	Room 31	View of window	Storage (31)	S	1m	Photographic Survey for Building Record	Bethan Jones	05/01/2023	Gwynedd Archaeological Trust	106
G2762_107	Room 31	View of door	Storage (31)	N	1m	Photographic Survey for Building Record	Bethan Jones	05/01/2023	Gwynedd Archaeological Trust	107
G2762_108	Room 32	View of ceiling beams in room 32	Changing room (32)	E	1m	Photographic Survey for Building Record	Bethan Jones	05/01/2023	Gwynedd Archaeological Trust	108
G2762_109	Room 32	View of entrance to room 32	Changing room (32)	W	1m	Photographic Survey for Building Record	Bethan Jones	05/01/2023	Gwynedd Archaeological Trust	109
G2762_110	Room 32	View of W window	Changing room (32)	S	1m	Photographic Survey for Building Record	Bethan Jones	05/01/2023	Gwynedd Archaeological Trust	110
G2762_111	Room 32	View of E window	Room 32	N	not used	Photographic Survey for Building Record	Bethan Jones	05/01/2023	Gwynedd Archaeological Trust	111
G2762_112	N/A	View of staircase	N/A	S	1m	Photographic Survey for Building Record	Bethan Jones	05/01/2023	Gwynedd Archaeological Trust	112

PHOTO RECORD NUMBER	SITE SUB- DIVISION	DESCRIPTION	ROOM NUMBER	VIEW FROM	SCALE(S)	REASON FOR PHOTO	CREATOR OF DIGITAL PHOTO	DATE	ORIGINATING ORGANISATION	PLATE
G2762_113	Room 33	View into bedroom 33 and window	Room 33	W	1m	Photographic Survey for Building Record	Bethan Jones	05/01/2023	Gwynedd Archaeological Trust	113
G2762_114	Room 33	View of entrance and former fireplace	Room 33	S	1m	Photographic Survey for Building Record	Bethan Jones	05/01/2023	Gwynedd Archaeological Trust	114
G2762_115	Room 34	View of entrane into loft area/attic	Room 34	SE	1m	Photographic Survey for Building Record	Bethan Jones	05/01/2023	Gwynedd Archaeological Trust	115
G2762_116	Room 34	View of attic (34)	Room 34	E	1m	Photographic Survey for Building Record	Bethan Jones	05/01/2023	Gwynedd Archaeological Trust	116
G2762_117	Room 34	View of door into attic	Room 34	W	1m	Photographic Survey for Building Record	Bethan Jones	05/01/2023	Gwynedd Archaeological Trust	117
G2762_118	Room 35	View up stairs leading into basement	Room 35 (basement)	N	1m	Photographic Survey for Building Record	Bethan Jones	05/01/2023	Gwynedd Archaeological Trust	118
G2762_119	Room 35	View of corridor (basement)	Room 35 (basement)	SE	1m	Photographic Survey for Building Record	Bethan Jones	05/01/2023	Gwynedd Archaeological Trust	119

PHOTO RECORD NUMBER	SITE SUB- DIVISION	DESCRIPTION	ROOM NUMBER	VIEW FROM	SCALE(S)	REASON FOR PHOTO	CREATOR OF DIGITAL PHOTO	DATE	ORIGINATING ORGANISATION	PLATE
G2762_120	Room 36	View of 'workshop' room (basement)	Workshop (Room 36)	S	1m	Photographic Survey for Building Record	Bethan Jones	05/01/2023	Gwynedd Archaeological Trust	120
G2762_121	Room 36	Door of workshop	Workshop (Room 36)	N	1m	Photographic Survey for Building Record	Bethan Jones	05/01/2023	Gwynedd Archaeological Trust	121
G2762_122	Room 36	View of alcove in workshop	Workshop (Room 36)	W	1m	Photographic Survey for Building Record	Bethan Jones	05/01/2023	Gwynedd Archaeological Trust	122
G2762_123	Room 37	View of room 37 in basement	Room 37 (basement)	SE	1m	Photographic Survey for Building Record	Bethan Jones	05/01/2023	Gwynedd Archaeological Trust	123
G2762_124	Room 37	View of worktop area and blocked window	Room 37 (basement)	NE	1m	Photographic Survey for Building Record	Bethan Jones	05/01/2023	Gwynedd Archaeological Trust	124
G2762_125	Room 37	View of door and worktop areas	Room 37 (basement)	N	1m	Photographic Survey for Building Record	Bethan Jones	05/01/2023	Gwynedd Archaeological Trust	125
G2762_126	Room 37	View of worktop areas and former window	Room 37 (basement)	SW	1m	Photographic Survey for Building Record	Bethan Jones	05/01/2023	Gwynedd Archaeological Trust	126

PHOTO RECORD NUMBER	SITE SUB- DIVISION	DESCRIPTION	ROOM NUMBER	VIEW FROM	SCALE(S)	REASON FOR PHOTO	CREATOR OF DIGITAL PHOTO	DATE	ORIGINATING ORGANISATION	PLATE
G2762_127	Room 38	View of early 20th C room classed as main hall - entrance	Main hall (38)	SW	1m	Photographic Survey for Building Record	Bethan Jones	05/01/2023	Gwynedd Archaeological Trust	127
G2762_128	Room 38	View of 'main hall'	Main hall (38)	NE	1m	Photographic Survey for Building Record	Bethan Jones	05/01/2023	Gwynedd Archaeological Trust	128
G2762_129	Room 39	Classroom within early 20th C 'bungalow' building	Classroom (39)	E	1m	Photographic Survey for Building Record	Bethan Jones	05/01/2023	Gwynedd Archaeological Trust	129
G2762_130	Room 40	Classroom within early 20th C 'bungalow' building	Classroom (40)	NW	not used	Photographic Survey for Building Record	Bethan Jones	05/01/2023	Gwynedd Archaeological Trust	130

APPENDIX III

Gwynedd Archaeological Trust Selection Strategy

G2762_Hillgrove_Bangor

15/12/2022 v2.0

Selection Strategy

Project Information

Project Management

Project Manager	John Roberts john.roberts@heneb.co.uk	
Archaeological Archive Manager	John Roberts john.roberts@heneb.co.uk	
Organisation	Gwynedd Archaeological Trust	
Stakeholders		Date Contacted
Collecting Institution(s)	GAT Historic Environment Record	15/12/2022
	RCAHMMW	On completion of Project Archive
Project Lead / Project Assurance	Tom Fildes, Gwynedd Archaeological Planning Service	14/12/2022
Landowner / Developer	Carlton (North Wales) Limited	13/12/2022

Resources

Resources required

Describe the resources required to implement this Selection Strategy, particularly if unusual resources are required.

No unusual resources required outside of GAT normal operating equipment and personnel.

Context

The full aims and objectives of this project are detailed in the project specific WSI.

- Gwynedd Archaeological Trust has been commissioned by *Carlton (North Wales) Limited on behalf of North Wales Recovery Communities* to undertake archaeological mitigation prior to the re-development of the former Hillgrove School on Ffriddoedd Road Bangor, Gwynedd, LL57 2TW (NGR SH 57137 71825 cf. Figure 01). The school complex is comprised of a high-pitched roof two-storey 19th century house (formerly known as Llwyneithin) with extensive additions that date from the latter half of the 20th century, as detailed on *Dewis Architecture Drawing No. D907.04* (Figure 02) and *Dewis Architecture Drawing No. D907.03* (Figure 03). The development is being undertaken as part of planning application C22/0662/11/LL and Condition 5. The archaeological mitigation has been undertaken in accordance with these requirements and has been commensurate to a Photographic Survey as defined in *Understanding Historic Buildings: A Guide*

to *Good Recording Practice* (Historic England, 2016). A Photographic Survey provides a very full visual record, but without a written or drawn survey at a comparable level of detail. The photographic survey has been undertaken in January 2023

Gwynedd Archaeological Trust. 2022. Hillgrove School, Bangor Written Scheme of Investigation for Archaeological Mitigation: Photographic Survey. Project (G2762).

1 – Digital Data

Stakeholders

John Roberts (GAT Principal Archaeologist)

Selection

All digital data has been collected, stored and selected in lines with the Gwynedd Archaeological Trust (GAT) Data Management Plan located on GAT's servers (available on request).

Following the completion of the fieldwork, a working project archive has been created based on following task list;

1. Pro-formas: all cross referenced and complete; and
2. Photographic Metadata: completed in *Microsoft Access* and cross-referenced with all pro-formas.

All relevant site archive data has been added to a digital project register specific to this project, which has been prepared in *Microsoft Excel*.

This data has been used as the basis for the physical and digital dataset archives. Information from these has been used to compile the project report. The physical archive has been stored in a designated project folder and the location confirmed in the Trust project database; the digital dataset has been stored on a dedicated Trust server, with the location confirmed in the Trust project database via a specific hyperlink. External datasets for the HER and RCAHMW are as defined in the dissemination strategy below. De-selected digital data has been confirmed in an updated digital management plan appended to the final report

De-Selected Digital Data

None

2 – Documents

Stakeholders

John Roberts – Principal Archaeologist, Gwynedd Archaeological Trust;
Sean Derby – Historic Environment Record, Gwynedd Archaeological Trust;
Gareth Edwards, *Head of Knowledge and Understanding, RCAHMW*

Selection

- A digital report has been provided to the regional Historic Environment Record; this has been submitted within six months of project completion (final report only), along with a digital dataset comprising an
- Event PRN summary. The report and dataset has been submitted in accordance with the required standards set out in *Guidance for the Submission of Data to the Welsh Historic Environment Records (HERs)* (Version 2); and
- A digital report and digital archive dataset has been provided to Royal Commission on Ancient and Historic Monuments, Wales (final report only), in accordance with the *RCAHMW Guidelines for Digital Archives Version 1*. The dataset has been prepared in the format required by RCAHMW and includes:
 - Photographic metadata (Microsoft Access);
 - Photographic archive (TIFF format);
 - Project Information form (Excel);
 - File Information form (Excel) – Microsoft Word report text final;
 - File Information form (Excel) – Photographic metadata (general);
 - File Information form (Excel) – Adobe PDF report final; and
 - File Information form (Excel) - Photographic metadata (detail).

De-Selected Documents

None



Gwynedd Archaeological Trust
Ymddiriedolaeth Archaeolegol Gwynedd

Craig Beuno, Ffordd y Garth, Bangor, Gwynedd. LL57 2RT
Ffon: 01248 352535. Ffacs: 01248 370925. email: gat@heneb.co.uk

