

CROWN HOTEL, BODEDRN

Arolwg Ffotograffig / Photographic Survey



Ymddiriedolaeth Archaeolegol Gwynedd
Gwynedd Archaeological Trust

CROWN HOTEL, BODEDRN

Arolwg Ffotograffig / Photographic Survey

Yr Amgylchedd Hanesyddol yn Cofnodi Prif Gyfeirnod /
Historic Environment Record Event Primary Reference Number: 46514

Prosiect Rhif / Project No. G2758

Adroddiad Rhif / Report No. 1679

Wedi'i baratoi ar gyfer / Prepared for: SBJJ Group

Rhagfyr 2022 / December 2022

Ysgrifenydd gan / Written by: Bethan Jones

Darlun blaen clawr / Front cover image:
Golygfa o uchelfa dwyrain Crown Hotel / View of east elevation of Crown Hotel
(archive reference; G2758_01)

Cyhoeddwyd gan Ymddiriedolaeth Archaeolegol Gwynedd
Ymddiriedolaeth Archaeolegol Gwynedd
Craig Beuno, Ffordd y Garth,
Bangor, Gwynedd, LL57 2RT

Published by Gwynedd Archaeological Trust
Gwynedd Archaeological Trust
Craig Beuno, Garth Road,
Bangor, Gwynedd, LL57 2RT



Cadeirydd / Chair David Elis-Williams MA(Oxon), MSc, CPFA
Prif Archaeolegydd/Chief Archaeologist - Andrew Davidson, B.A., MCIfA

Mae Ymddiriedolaeth Archaeolegol Gwynedd yn Gwmni Cyfyngedig (Ref Cof. 1180515) ac yn Elusen (Rhif Cof. 508849)
Gwynedd Archaeological Trust is both a Limited Company (Reg No. 1180515) and a Charity (reg No. 508849)

Approvals Table				
	Role	Printed Name	Signature	Date
Originated by	Document Author	Bethan Jones		21/12/22
Reviewed by	Document Reviewer	John Roberts		21/12/22
Approved by	Principal Archaeologist	John Roberts		21/12/22

Revision History			
Rev No.	Summary of Changes	Ref Section	Purpose of Issue

CONTENTS

CRYNHODEB ANHECHNEGOL.....	3
NON-TECHNICAL SUMMARY	3
1 INTRODUCTION	4
2 METHOD STATEMENT	6
2.1 Introduction	6
2.2 Photographic Record	6
2.3 Written Record	8
2.4 Drawn Record	8
2.5 Dissemination & Archiving.....	9
3 RESULTS.....	10
3.1 Introduction	10
3.2 Photographic Survey.....	12
4 CONCLUSION	13
5 SOURCES CONSULTED.....	14
Appendix I	15
Gwynedd Archaeological Trust Written Scheme of Investigation	15
Appendix II	16
Gwynedd Archaeological Trust Photographic Metadata.....	16
Appendix III	17
Gwynedd Archaeological Trust Selection Strategy.....	17

FIGURES

Figure 01:

Reproduction of Curvasure Drawing No. 21137/03 showing location of external images.

Scale: As Shown

Figure 02:

Reproduction of BR:CROWN:SU021 showing location of images on ground floor. Scale: As

Shown

Figure 03:

Reproduction of BR:CROWN:SU02 showing location of images on first floor. Scale: As

Shown

PLATES

Plate 1: View of east elevation of Crown Hotel; scale 1m; view from E (archive reference: G2758_01).

Plate 2: View of main entrance and original 19th cen. Building of Crown Hotel; scale 1m; view from E (archive reference: G2758_02).

Plate 3: Oblique view of later 19th cen addition and 21st cen. pergola beer garden; scale 1m; view from SE (archive reference: G2758_03).

Plate 4: View of store rooms 09-11; scale 1m; view from SE (archive reference: G2758_04).

Plate 5: Oblique view of north gable and west elevation of Crown Hotel, with attached store rooms; scale 1m; view from NW (archive reference: G2758_05).

Plate 6: View of white painted rubble stone store 11; scale 1m; view from E (archive reference: G2758_06).

Plate 7: View of white painted rubble stone store 11; scale 1m; view from W (archive reference: G2758_07).

Plate 8: View of large plastered and white painted store 10; scale 1m; view from NE (archive reference: G2758_08).

Plate 9: View of large plastered and white painted store 10; scale 1m; view from SW (archive reference: G2758_09).

Plate 10: Oblique view of west elevation of Crown Hotel; scale 1m; view from NW (archive reference: G2758_10).

Plate 11: View of conservatory and patio area; scale 1m; view from NW (archive reference: G2758_11).

Plate 12: View of Store 9 entrance; scale 1m; view from W (archive reference: G2758_12).

Plate 13: Oblique view of 20th cen. Extension at western elevation; scale 1m; view from NW (archive reference: G2758_13).

Plate 14: View of double gated access into Crown Hotel (at rear); scale 1m; view from N (archive reference: G2758_14).

Plate 15: Oblique view of Crown Hotel East elevation; scale 1m; view from NE (archive reference: G2758_15).

Plate 16: View of south gable elevation of Crown Hotel; scale 1m; view from SE (archive reference: G2758_16).

Plate 17: View of entrance into Bar Area 1; scale 1m; view from E (archive reference: G2758_17).

Plate 18: View of main Bar Area 1; scale 1m; view from W (archive reference: G2758_18).

Plate 19: View of Bar Area 1 partition and entrance into room 3; scale 1m; view from NE (archive reference: G2758_19).

Plate 20: View of 1970s stone fire place in Bar Area 1; scale 1m; view from NW (archive reference: G2758_20).

Plate 21: View of partition and former bar in Bar Area 1; scale 1m; view from SE (archive reference: G2758_21).

Plate 22: View from SW corner of Bar Area 1 with entrance.; scale 1m; view from SW (archive reference: G2758_22).

Plate 23: View of partition and fireplace in Bar Area 1; scale 1m; view from NE (archive reference: G2758_23).

Plate 24: View of remains of former bar; scale 1m; view from E (archive reference: G2758_24).

Plate 25: View into Bar Area 2 taken from former bar; scale 1m; view from SW (archive reference: G2758_25).

Plate 26: View of remnants of bar and stone fire place; scale 1m; view from NE (archive reference: G2758_26).

Plate 27: View of stone fire place; scale 1m; view from N (archive reference: G2758_27).

Plate 28: Smaller area in Bar Area 2; scale 1m; view from W (archive reference: G2758_28).

Plate 29: Smaller area in Bar Area 2; scale 1m; view from SW (archive reference: G2758_29).

Plate 30: View of exit into beer garden from Bar Area 2; scale 1m; view from SW (archive reference: G2758_30).

Plate 31: View of hallway (3) showing stair case to first floor; scale 1m; view from N (archive reference: G2758_31).

Plate 32: View of hall leading to gents and prep room; scale 1m; view from S (archive reference: G2758_32).

Plate 33: View of length of hall; scale 1m; view from N (archive reference: G2758_33).

Plate 34: View of hall showing storage below stairs and alcove partition; scale 1m; view from S (archive reference: G2758_34).

Plate 35: View of hall from Bar Area 1; scale 1m; view from E (archive reference: G2758_35).

Plate 36: View of entrance into Darts room; scale 1m; view from SW (archive reference: G2758_36).

Plate 37: View of S facing window of darts room; scale 1m; view from NW (archive reference: G2758_37).

Plate 38: View of darts room from SE; scale 1m; view from SE (archive reference: G2758_38).

Plate 39: View of darts room from entrance; scale 1m; view from NE (archive reference: G2758_39).

Plate 40: View of ladies lavatory; scale 1m; view from SE (archive reference: G2758_40).

Plate 41: View of "ladies" from west; scale 1m; view from W (archive reference: G2758_41).

Plate 42: View of entrance into ladies from Hall (3); scale 1m; view from SE (archive reference: G2758_42).

Plate 43: View of kitchen area with window and cubby hole; scale 1m; view from SE (archive reference: G2758_43).

Plate 44: View of poss. Previous range area and airing cupboard; scale 1m; view from NW (archive reference: G2758_44).

Plate 45: View of boiler cupboard and window in kitchen area; scale 1m; view from SW (archive reference: G2758_45).

Plate 46: View of cubby hole and entrance of kitchen; scale 1m; view from NE (archive reference: G2758_46).

Plate 47: View of doorway leading into prep room and conservatory; scale 1m; view from SW (archive reference: G2758_47).

Plate 48: View of prep room; scale 1m; view from E (archive reference: G2758_48).

Plate 49: View of prep room and doorway; scale 1m; view from W (archive reference: G2758_49).

Plate 50: View of cubby hole into Room 6; scale 1m; view from N (archive reference: G2758_50).

Plate 51: View of conservatory area; scale 1m; view from SE (archive reference: G2758_51).

Plate 52: View of conservatory area; scale 1m; view from E (archive reference: G2758_52).

Plate 53: View of "gents"; scale 1m; view from SW (archive reference: G2758_53).

Plate 54: View of entrance into "gents"; scale 1m; view from E (archive reference: G2758_54).

Plate 55: View of staircase leading up to first floor guest room and manager flat; scale 1m; view from W (archive reference: G2758_55).

Plate 56: View of hall leading to bathroom (19); scale 1m; view from E (archive reference: G2758_56).

Plate 57: View of hall (12) leading to hallway (13) and B&B bedrooms; scale 1m; view from W (archive reference: G2758_57).

Plate 58: View of hall from west; scale 1m; view from W (archive reference: G2758_58).

Plate 59: View of hall from east end; scale 1m; view from E (archive reference: G2758_59).

Plate 60: View of hall from west end; scale 1m; view from W (archive reference: G2758_60).

Plate 61: View of guest bedroom 14 with window; scale 1m; view from SW (archive reference: G2758_61).

Plate 62: View of guest bedroom showing porceling sink and window; scale 1m; view from NW (archive reference: G2758_62).

Plate 63: View of entrance into guest bedroom 14; scale 1m; view from NE (archive reference: G2758_63).

Plate 64: View of large room with window; scale 1m; view from NW (archive reference: G2758_64).

Plate 65: View of room 15 - showing plaster; scale 1m; view from SE (archive reference: G2758_65).

Plate 66: View of room 15 with window; scale 1m; view from NE (archive reference: G2758_66).

Plate 67: View of entrance to room 15; scale 1m; view from SW (archive reference: G2758_67).

Plate 68: View of window in guest room 16 - from entrance; scale 1m; view from NW (archive reference: G2758_68).

Plate 69: View of room 16; scale 1m; view from NE (archive reference: G2758_69).

Plate 70: View of sink and entrance to guest room 16; scale 1m; view from SW (archive reference: G2758_70).

Plate 71: View of window in room 17 and ceiling decor; scale 1m; view from NE (archive reference: G2758_71).

Plate 72: View of sink and entrance into guest room 17; scale 1m; view from SE (archive reference: G2758_72).

Plate 73: View of window in room 18; scale 1m; view from NE (archive reference: G2758_73).

Plate 74: View of sink and entrance into room 18; scale 1m; view from SE (archive reference: G2758_74).

Plate 75: View of bathroom, used for guests; scale 1m; view from SE (archive reference: G2758_75).

Plate 76: View of bathroom - room 19, used for guests; scale 1m; view from SW (archive reference: G2758_76).

Plate 77: View of entrance into bathroom 19; scale 1m; view from NW (archive reference: G2758_77).

Plate 78: View of hall into managers flat; scale 1m; view from S (archive reference: G2758_78).

Plate 79: View of entrance into managers flat; scale 1m; view from N (archive reference: G2758_79).

Plate 80: View of kitchen/living area - kitchen fittings removed; scale 1m; view from NE (archive reference: G2758_80).

Plate 81: View of window in kitchen/living room; scale 1m; view from W (archive reference: G2758_81).

Plate 82: View along hallway (22) in managers flat; scale 1m; view from N (archive reference: G2758_82).

Plate 83: View of exit to roofspace from hall (22); scale 1m; view from E (archive reference: G2758_83).

Plate 84: View of built-in storage cupboard in hall (22); scale 1m; view from NE (archive reference: G2758_84).

Plate 85: View into bedroom (23); scale 1m; view from NW (archive reference: G2758_85).

Plate 86: View of entrance into bedroom (23); scale 1m; view from SE (archive reference: G2758_86).

Plate 87: View of window in bedroom (23); scale 1m; view from W (archive reference: G2758_87).

Plate 88: View of bedroom (24); scale 1m; view from SW (archive reference: G2758_88).

Plate 89: View of bedroom (24); scale 1m; view from SE (archive reference: G2758_89).

Plate 90: View of bedroom (24); scale 1m; view from NW (archive reference: G2758_90).

Plate 91: View of bedroom (24) - showing entrance into room; scale 1m; view from NE (archive reference: G2758_91).

Plate 92: View of window in bedroom (24); scale 1m; view from W (archive reference: G2758_92).

Plate 93: View of bathroom in managers flat -sloping roof; scale 1m; view from SE (archive reference: G2758_93).

Plate 94: View of bathroom from the entrance into room; scale 1m; view from S (archive reference: G2758_94).

CRYNHODEB ANHECHNEGOL

Yn 2022, comisiynwyd Ymddiriedolaeth Archeolegol Gwynedd gan Grŵp SBBJ i ymgymryd â gwaith lliniaru archeolegol, sy'n cynnwys arolwg ffotograffig, cyn gwaith adnewyddu yn Crown Hotel, Bodedern. Mae'r gwesty/dafarn yn adeilad gwahanedig â tho llechi a adeiladwyd yn ystod y 19eg ganrif; gydag ychwanegiad hwyrach y 19eg ganrif o asgellion gogledd a gorllewin; man storfa; ac estyniad ychwanegol yn y 20fed ganrif tu ôl i'r adeilad. Roedd yr arolwg ffotograffig yn cynnwys 94 o ddelweddau a oedd yn cynnwys golygfeydd allanol a mewnol o'r holl weddluniau ac ystafelloedd hygyrch.

NON-TECHNICAL SUMMARY

In 2022 Gwynedd Archaeological Trust was commissioned by SBBJ Group to undertake archaeological mitigation, consisting of a photographic survey, prior to renovation works at Crown Hotel, Bodedern. The hotel/tavern is a slate-roofed detached two storey structure built during the 19th century, with later 19th century additions of west and north wings, store areas, and a further 20th century extensions at the rear of the building. The photographic survey comprised 94 images which included exterior and internal views of all elevations and accessible rooms.

1 INTRODUCTION

Gwynedd Archaeological Trust (GAT) was commissioned by *SBJJ Group* to undertake archaeological mitigation prior to alterations and extensions to the existing Crown Hotel public house together with creating three residential apartments at Bodedern, Ynys Môn, LL65 3TU (NGR SH33398043). The public house is a slate-roofed detached two storey structure as detailed on *Curvasure Drawing No. 21137/03* ([Figure 01](#)) and *BR Architecture Drawing Nos. BR:CROWN:SU01* ([Figure 02](#)) and *BR:CROWN:SU02* ([Figure 03](#)). The development is being undertaken as part of planning application FPL/2022/50 and Condition 7. The archaeological mitigation has been undertaken in accordance with these requirements and will be commensurate to a Photographic Survey as defined in *Understanding Historic Buildings: A guide to good recording practice* (Historic England, 2016). This Photographic Survey provides a very full visual record, but without a written or drawn survey at a comparable level of detail.

The archaeological mitigation comprised a Photographic Survey as defined in *Understanding Historic Buildings: A guide to good recording practice* (Historic England, 2016). The aim of the Photographic Survey was to provide a very full visual record, but not a written or drawn survey at a comparable level of detail. All work was planned, managed and undertaken by GAT in accordance with the following standards and guidance:

- Guidance for the Submission of Data to the Welsh Historic Environment Records (HERs) Version 1.1 (The Welsh Archaeological Trusts, 2018);
- Guidelines for digital archives (Royal Commission on Ancient and Historic Monuments of Wales, 2015).
- Management of Archaeological Projects (English Heritage, 1991);
- Management of Research Projects in the Historic Environment: The MoRPHE Project Managers' Guide (Historic England, 2015);
- Standard and Guidance for the Archaeological Investigation and Recording of Standing Buildings or Structures (Chartered Institute for Archaeologists, 2014);
- Standard and guidance for the collection, documentation, conservation and research of archaeological materials (Chartered Institute for Archaeologists, 2014); and
- Understanding Historic Buildings: A Guide to Good Recording Practice (Historic England, 2016).

The archaeological mitigation was monitored by the Gwynedd Archaeological Planning Service (GAPS) and undertaken in accordance with an approved written scheme of investigation (cf. [Appendix I](#)). In line with the GAPS Environment Record (HER) requirements, the HER was contacted at the onset of the project to ensure that any data arising was formatted in a manner suitable for accession to the HER and followed the guidance set out in *Guidance for the Submission of Data to the Welsh Historic Environment Records (HERs)* (The Welsh Archaeological Trusts, 2018).

The HER enquiry number for this project is GATHER1760 and the Event Primary Reference Number is 46514.

2 METHOD STATEMENT

2.1 Introduction

The archaeological mitigation was undertaken as a Photographic Survey, as defined by *Understanding Historic Buildings: A Guide to Good Recording Practice* (Historic England, 2016). The photographic survey was to provide a very full visual record, but without a written or drawn survey at a comparable level of detail.

2.2 Photographic Record

The Photographic Record included the following:

- A general view or views of the building (in its wider setting or landscape).
- The building's external appearance. Typically a series of oblique views that will show all external elevations of the building, and give an overall impression of its size, shape and immediate setting. Where individual elevations include complex historical information it may also be appropriate to take views at right-angles to the plane of the elevation. Images received suggest oblique views will be necessary, due to the proximity of neighbouring buildings restricting space. In this instance, there is limited access and visibility of the north elevation, which represents the side of the building; an oblique image will be taken of this elevation
- The overall appearance of the principal rooms and circulation areas. Based on *Curvature Drawing No. 21137/03* ([Figure 01](#)) and *BR Architecture Drawing Nos. BR:CROWN:SU01* and *BR:CROWN:SU02* ([Figure 03](#) and 02), there is a ground floor (comprising two bar areas, a darts room, ladies and gents' toilets, a kitchen and prep room, and three storage area) and a first floor (including six bedrooms, two bathrooms, a manager's flat and a kitchen/living area).
- Any external or internal detail, structural or decorative, which is relevant to the building's design, development and use, with scale where appropriate.
- A photographic register detailing the photo number, the location and direction of each view, and the composition of the shot.
- Photograph locations and directions of view marked on plans. In this instance, *BR Architecture Drawing Nos. BR:CROWN:SU01* and *BR:CROWN:SU02* ([Figure 03](#) and 02) will be used.
- Photographs should be of archive quality using a digital SLR (minimum 12 megapixel)

- Photographs, where appropriate (i.e. not general shots) should include a clearly visible, graduated metric scale.
- Photographs should be adequately lit and not blurry. With all images checked on site.

Photographic images were taken using a digital SLR (Nikon D3100) camera set to maximum resolution (4608 x 3072; 14.2 effective megapixels) in RAW format. A photographic record was maintained on site using GAT pro-formas and digitised in Microsoft Excel and Access as part of the fieldwork archive and dissemination process; a total of 49 images were taken (archive ref.: G2758_01 to G2758_94). The photographic images were converted to TIFF for final archiving using Adobe Photoshop.

2.3 Written Record

The Written Record comprised:

- The precise location of the building as an address and in the form of a National Grid reference.
- A note of any statutory designation (that is, listing, scheduling, Register of Historic Parks and Gardens, conservation area), where applicable.
- The date when the record was made, the name(s) of the recorder(s) and the location of the archive material.
- A summary statement describing the building's type and purpose, historically and at present, materials and any dating, so far as was apparent from a superficial inspection.
- A basic written record was completed using GAT pro-formas.

2.4 Drawn Record

The Drawn Record comprised:

- A plan showing the location and direction of view of each photograph. In this instance, the scaled plans detailed in *Curvasure Drawing No. 21137/03* (Figure 01) and *BR Architecture Drawing Nos. BR:CROWN:SU01* ([Figure 02](#)) and *BR:CROWN:SU02* ([Figure 03](#)) was used for reference and as a base plan.

2.5 Dissemination & Archiving

The physical archive is stored in a designated project folder and the location confirmed in the Data Management Plan; the digital dataset is stored on a dedicated Trust server, with the location confirmed in the Data Management Plan via a specific hyperlink. The working project archive in this instance comprises digital data including photographic data, documentation and written data, as well as paper records, including project pro-formas. The Data Management Plan is stored on a project specific form in the GAT project database (format: *Microsoft Access*) and a Selection Strategy has been completed and appended (cf. [Appendix III](#)). The following dissemination and archiving of the report and digital dataset were applied:

- A digital report has been provided to Cyngor Gwynedd and Gwynedd Archaeological Planning Service (draft report then final report);
- A digital report has been provided to the regional Historic Environment Record; this was submitted within six months of project completion, along with a digital dataset comprising an Event PRN summary. The report and dataset was submitted in accordance with the required standards set out in *Guidance for the Submission of Data to the Welsh Historic Environment Records (HERs)* (Version 1.1); and
- A digital report and digital archive dataset has been provided to the Royal Commission on Ancient and Historical Monuments, Wales (final report only), in accordance with the *RCAHMW Guidelines for Digital Archives Version 1*. The dataset was prepared in the format required by RCAHMW and included:
 - Photographic metadata (Microsoft Access);
 - Photographic archive (TIFF format);
 - Project Information form (Excel);
 - File Information form (Excel) – Microsoft Word report text final;
 - File Information form (Excel) – Photographic metadata (general);
 - File Information form (Excel) – Adobe PDF report final; and
 - File Information form (Excel) - Photographic metadata (detail).

3 RESULTS

3.1 Introduction

The Crown Hotel is a two storey 19th century building, predominantly a cream roughcast structure with brown painted stucco dressings, and a slate roof with two chimney breast at north and south gable. Later 19th century additions are present on the western side and north gable end, noted by lower roofs flanked by dormer windows (on the 1st floor), with another chimney added at west gable.

The east facing elevation including ten casement uPVC windows in plain stucco surrounds, as well as similar surround to the main access points to the building. Six uPVC casement windows are located on southern elevation, with stucco embellishments painted in the same cream as roughcast exterior. Storage areas are located at the north gable, accessible from the west facing elevation where rubble stone construction is exposed. At the rear of the building (on the western elevation) is a later 20th century flat roofed extension with a narrow uPVC conservatory on the northern end and access to roof from an external iron staircase attached at the west.

The building comprised the following:

- A ground floor; including two bars, a darts room, hall, kitchen areas, toilets, outdoor stored a small beer garden and outdoor patio area. All internal walls and original 19th century ceiling beams were intact, and the bar had been partially removed (along with some wood panelling along the walls of bar area and darts room). Plaster was retained on most walls alongside wall papering. The ladies bathroom and kitchen area are based in a later 20th extension. The western elevation of store buildings (09 – 11) exposed 19th century building construction consisting of field stones bonded with mortar. Corrugated iron roofed store 10 and 11.
- A first floor; including four B&B bedrooms, large room, hallway within the original 19th century building and western later 19th century addition. The staircase and guest bathroom were part of the 20th century extension. A managers flat was located at northern end of the later 19th century extension including; two bedrooms, hall and bathroom with kitchen and living area within confines of original 19th century building. All rooms were predominantly carpeted with white wall papered walls, with all guest bedrooms containing porcelain sinks. The bedroom dormer windows within the

managers flat had plaster embellishments and exposed roofbeams ran through this part of the building

- External; including parking area, walled 'garden' area including a roofed pergola beer garden along eastern side, three store rooms, a breeze block patio area (likely for private use), boiler storage and scrubland at the north and western elevation. Double wooden gates within high stone walls provided access from the south to western outdoor area.

3.2 Photographic Survey



Plate 01: Exterior - View of East elevation of Crown Hotel; scale: 1x1m (archive reference: G2758_01).



Plate 02: Exterior -View of main entrance and original 19th cen. building of Crown Hotel; scale: 1x1m (archive reference: G2758_02).



Plate 37: Room 4 - View of S facing window of darts room; scale: 1x1m (archive reference: G2758_37).



Plate 38: Room 4 - View of darts room from SE ; scale: 1x1m (archive reference: G2758_XX).



Plate 35: Room 3 - View of hall from Bar Area 1; scale: 1x1m (archive reference: G2758_35).



Plate 36: Room 4 - View of entrance into Darts room; scale: 1x1m (archive reference: G2758_36).

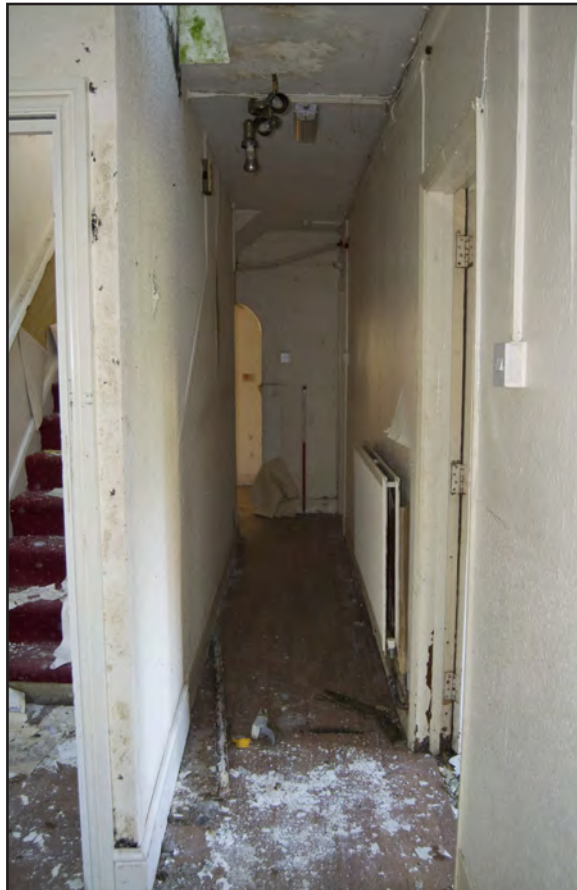


Plate 33: Room 3 - View of length of hall ; scale: 1x1m (archive reference: G2758_33).



Plate 34: Room 3 - View of hall showing storage below stairs and alcove partition ; scale: 1x1m (archive reference: G2758_34).



Plate 31: Room 3 - View of hallway (3) showing stair case to first floor; scale: 1x1m
(archive reference: G2758_31).



Plate 32: Room 3 - View of hall leading to gents and prep room ; scale: 1x1m
(archive reference: G2758_32).



Plate 27: Room XX- ; scale: 1x1m (archive reference: G2758_XX).



Plate XX: Room XX- ; scale: 1x1m (archive reference: G2758_XX).



Plate 27: Room 1 - View of stone fire place ; scale: 1x1m (archive reference: G2758_27).



Plate 28: Room 2 - Smaller area in Bar Area 2 ; scale: 1x1m (archive reference: G2758_28).



Plate 25: Room 2 - View into Bar Area 2 taken from former bar ; scale: 1x1m
(archive reference: G2758_25).



Plate 26: Room 1- View of remnants of bar and stone fire place ; scale: 1x1m
(archive reference: G2758_26).



Plate 23: Room 1- View of partition and fireplace in Bar Area 1 ; scale: 1x1m (archive reference: G2758_23).



Plate 24: Room 1- View of remains of former bar ; scale: 1x1m (archive reference: G2758_23).



Plate 21: Room 1 - View of partition and former bar in Bar Area 1; scale: 1x1m (archive reference: G2758_21).



Plate 22: Room 1 - View from SW corner of Bar Area 1 with entrance; scale: 1x1m (archive reference: G2758_22).



Plate 19: Room 1 - View of Bar Area 1 partition and entrance into room 3; scale: 1x1m (archive reference: G2758_19).



Plate 20: Room 1 - View of 1970s stone fire place in Bar Area 1; scale: 1x1m (archive reference: G2758_20).



Plate 17: Room 1 -View of entrance into Bar Area 1 ; scale: 1x1m (archive reference: G2758_17).



Plate 18: Room 1 - View of main Bar Area 1 ; scale: 1x1m (archive reference: G2758_18).



Plate 15: Exterior - Oblique view of Crown Hotel East elevation ; scale: 1x1 m
(archive reference: G2758_15).



Plate 16: Exterior - View of south gable elevation of Crown Hotel; scale: 1x1 m
(archive reference: G2758_16).



Plate 13: Exterior - Oblique view of 20th cen. extension at western elevation; scale: 1x1 m
(archive reference: G2758_13).



Plate 14: Exterior - View of double gated access into Crown Hotel (at rear) ; scale: 1x1 m
(archive reference: G2758).



Plate 11: Exterior - View of conservatory and patio area; scale: 1x1m (archive reference: G2758_11).



Plate 12: Exterior - View of Store 9 entrance; scale: 1x1m (archive reference: G2758_12).



Plate 09: Room 10 - View of large plastered and white painted store 10 ; scale: 1x1m
(archive reference: G2758_09).



Plate 10: Exterior - Oblique view of west elevation of Crown Hotel ; scale: 1x1m
(archive reference: G2758_10).



Plate 07: Room 11 - View of white painted rubble stone store 11; scale: 1x1m (archive reference: G2758_07).



Plate 08: Room 10 - View of large plastered and white painted store 10; scale: 1x1m (archive reference: G2758_08).



Plate 03: Exterior - Oblique view of later 19th cen. addition and 21st cen. pergola beer garden; scale: 1x1m (archive reference: G2758_03).



Plate 04: Exterior - View of store rooms 09-11; scale: 1x1m (archive reference: G2758_04).



Plate 93: Room 25 - View of bathroom in managers flat -sloping roof; scale: 1x1m (archive reference: G2758_93).



Plate 94: Room 25 - View of bathroom from the entrance into room; scale: 1x1m (archive reference: G2758_94).



Plate 91: Room 24 - View of bedroom (24), showing entrance into room; scale: 1x1m (archive reference: G2758_91).



Plate 92: Room 24 - View of window in bedroom (24); scale: 1x1m (archive reference: G2758_92).



Plate 89: Room 24 - View of bedroom (24); scale: 1x1m (archive reference: G2758_89).



Plate 90: Room 24 - View of bedroom (24); scale: 1x1m (archive reference: G2758_90).



Plate 87: Room 24 - View of window in bedroom (23); scale: 1x1m (archive reference: G2758_87).



Plate 88: Room 24 - View of bedroom (24); scale: 1x1m (archive reference: G2758_88).



Plate 85: Room 23 - View into bedroom (23); scale: 1x1m (archive reference: G2758_85).



Plate 86: Room 23 - View of entrance into bedroom (23); scale: 1x1m (archive reference: G2758_86).



Plate 83: Room 22 - View of exit to roofspace from hall (22); scale: 1x1m (archive reference: G2758_83).



Plate 84: Room 22 - View of built-in storage cupboard in hall (22); scale: 1x1m (archive reference: G2758_84).



Plate 81: Room 21 - View of window in kitchen/living room; scale: 1x1m (archive reference: G2758_81).



Plate 82: Room 22 - View along hallway (22) in managers flat; scale: 1x1m (archive reference: G2758_81).



Plate 79: Room 20 - View of entrance into managers flat; scale: 1x1m (archive reference: G2758_79).



Plate 80: Room 21 - View of kitchen/living area, kitchen fittings removed; scale: 1x1m (archive reference: G2758_80).



Plate 77: Room 19 - View of entrance into bathroom 19 (archive reference: G2758_77).



Plate 78: Room 20 - View of hall into managers flat; scale: 1x1m (archive reference: G2758_78).



Plate 75: Room 19 - View of bathroom, used for guests; scale: 1x1m (archive reference: G2758_75).



Plate 76: Room 19 - View of bathroom, used for guests; scale: 1x1m (archive reference: G2758_76).



Plate 73: Room 18 - View of window in room 18; scale: 1x1m (archive reference: G2758_73).



Plate 74: Room 18 - View of sink and entrance into room 18; scale: 1x1m (archive reference: G2758_74).



Plate 71: Room 17 - View of window in room 17 and ceiling decor; scale: 1x1m (archive reference: G2758_71).



Plate 72: Room 17 - View of sink and entrance into guest room 17; scale: 1x1m (archive reference: G2758_72).



Plate 69: Room 16 - View of window in guest room 16; scale: 1x1m (archive reference: G2758_69).



Plate 70: Room 16 - View of sink and entrance to guest room 16; scale: 1x1m (archive reference: G2758_70).



Plate 67: Room 15 - View of entrance to room 15; scale: 1x1m (archive reference: G2758_67).



Plate 68: Room 16 - View of window in guest room 16 taken from entrance; scale: 1x1m (archive reference: G2758_68).



Plate 65: Room 15 - View of room 15 showing plaster; scale: 1x1m (archive reference: G2758_65).



Plate 66: Room 15 - View of room 15 with window; scale: 1x1m (archive reference: G2758_66).



Plate 63: Room 14 - View of entrance into guest bedroom 14; scale: 1x1m (archive reference: G2758_63).



Plate 64: Room 15 - View of large room with window; scale: 1x1m (archive reference: G2758_64).



Plate 61: Room 14 - View of guest bedroom 14 with window ; scale: 1x1m
(archive reference: G2758_61).



Plate 62: Room 14 - View of guest bedroom showing porcelain sink and window; scale: 1x1m
(archive reference: G2758_62).



Plate 59: Room 13 - View of hall from east end; scale: 1x1m (archive reference: G2758_59).



Plate 60: Room 13 - View of hall from west end; scale: 1x1m (archive reference: G2758_60).



Plate 57: Room 12 - View of hall (12) leading to hallway (13) and B&B bedrooms ; scale: 1x1m (archive reference: G2758_57).



Plate 58: Room 13 - View of hall from west; scale: 1x1m (archive reference: G2758_58).



Plate 55: Room 12 - View of staircase leading up to first floor guest room and manager flat; scale: 1x1m (archive reference: G2758_55).



Plate 56: Room 12- View of hall leading to bathroom (19) ; scale: 1x1m (archive reference: G2758_56).



Plate 53: Room 8 - View of "gents"; scale: 1x1m (archive reference: G2758_53).



Plate 54: Room 8 - View of entrance into "gents"; scale: 1x1m (archive reference: G2758_54).



Plate 51: Room 7- View of conservatory area; scale: 1x1m (archive reference: G2758_51).



Plate 52: Room 7 - View of conservatory area ; scale: 1x1m (archive reference: G2758_52).



Plate 49: Room 7- View of prep room and doorway ; scale: 1x1m (archive reference: G2758_49).



Plate 50: Room 7 - View of cubby hole into Room 6; scale: 1x1m (archive reference: G2758_50).



Plate 47: Room 7 - View of doorway leading into prep room and conservatory; scale: 1x1m (archive reference: G2758_47).



Plate 48: Room 7 - View of prep room ; scale: 1x1m (archive reference: G2758_48).



Plate 45: Room 6 - View of boiler cupboard and window in kitchen area; scale: 1x1m
(archive reference: G2758_45).



Plate 46: Room 6 - View of cubby hole and entrance of kitchen; scale: 1x1m
(archive reference: G2758_46).



Plate 43: Room 6 - View of kitchen area with window and cubby hole ; scale: 1x1m
(archive reference: G2758_43).



Plate 44: Room 6 - View of possible previous range area and airing cupboard; scale: 1x1m
(archive reference: G2758_44).



Plate 41: Room 5 - View of "ladies" from west ; scale: 1x1m (archive reference: G2758_41).



Plate 42: Room 5 - View of entrance into ladies from Hall (3); scale: 1x1m (archive reference: G2758_42).



Plate 39: Room 4 - View of darts room from entrance; scale: 1x1m (archive reference: G2758_39).



Plate 40: Room 5 - View of ladies lavatory; scale: 1x1m (archive reference: G2758_40).

3.3 CONCLUSION

Gwynedd Archaeological Trust was commissioned by SBJJ Group to undertake archaeological mitigation, consisting of a photographic survey, prior to renovation works at Crown Hotel, Church Street, Bodedern, Anglesey. The hotel/tavern was a slate-roofed semi-detached two storey structure built during the 19th century, with later 19th century additions of a west and north wings, store areas, and a further 20th century extensions at the rear of the building.

The building comprised a ground floor, including former bar areas, darts room, kitchen areas and toilets; a first floor including four guest bedrooms, bathroom and auxilliary room; including a two bedroomed managers flat located within the north wing. The exterior included cream coloured roughcast stonework, with the non-rendered elements constructed from a rubble field stones, with occasional red brick bonded together by mortar. Within the interior, original 19th century ceiling and roof beams are well preserved, alongside with late 20th century wall fittings, flooring and fixtures were mostly still intact.

The photographic survey comprised 94 images which included exterior and internal views of all elevations and accessible rooms.

4 SOURCES CONSULTED

1. Chartered Institute for Archaeologists, 2020, Standard and Guidance for the Archaeological Investigation and Recording of Standing Buildings or Structures
2. Chartered Institute for Archaeologists, 2020, Standard and guidance for the collection, documentation, conservation and research of archaeological materials
3. English Heritage, 1991, Management of Archaeological Projects (MAP2)
4. Historic England, 2015, Management of Research Projects in the Historic Environment (MoRPHE)
5. Historic England, 2016. *Understanding Historic Buildings: A Good to Good Recording Practice*
6. Royal Commission on Ancient and Historic Monuments of Wales, 2015, Guidelines for digital archives
7. The Welsh Archaeological Trusts, 2018. *Guidance for the Submission of Data to the Welsh Historic Environment Records (HERs) Version 1.1.*

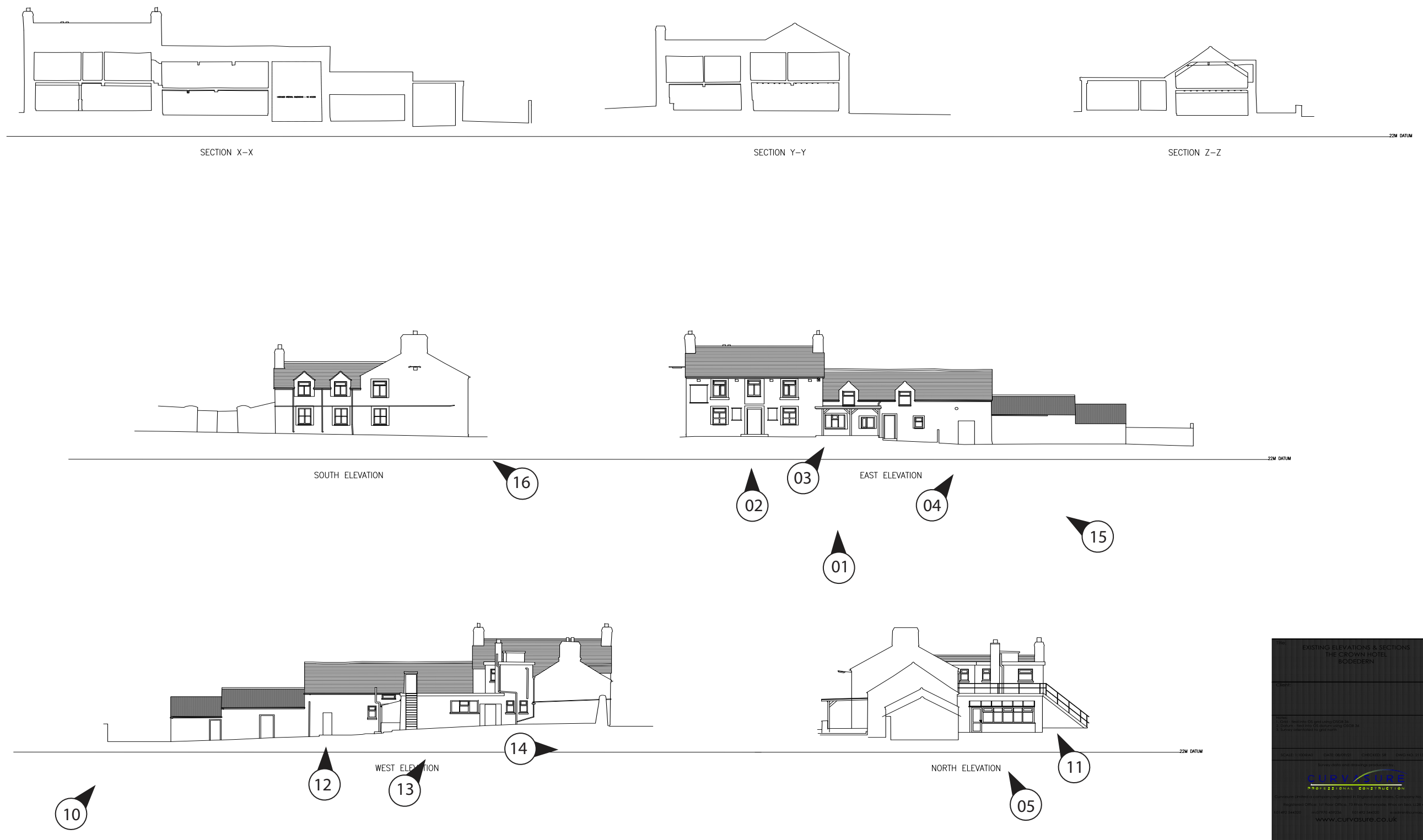
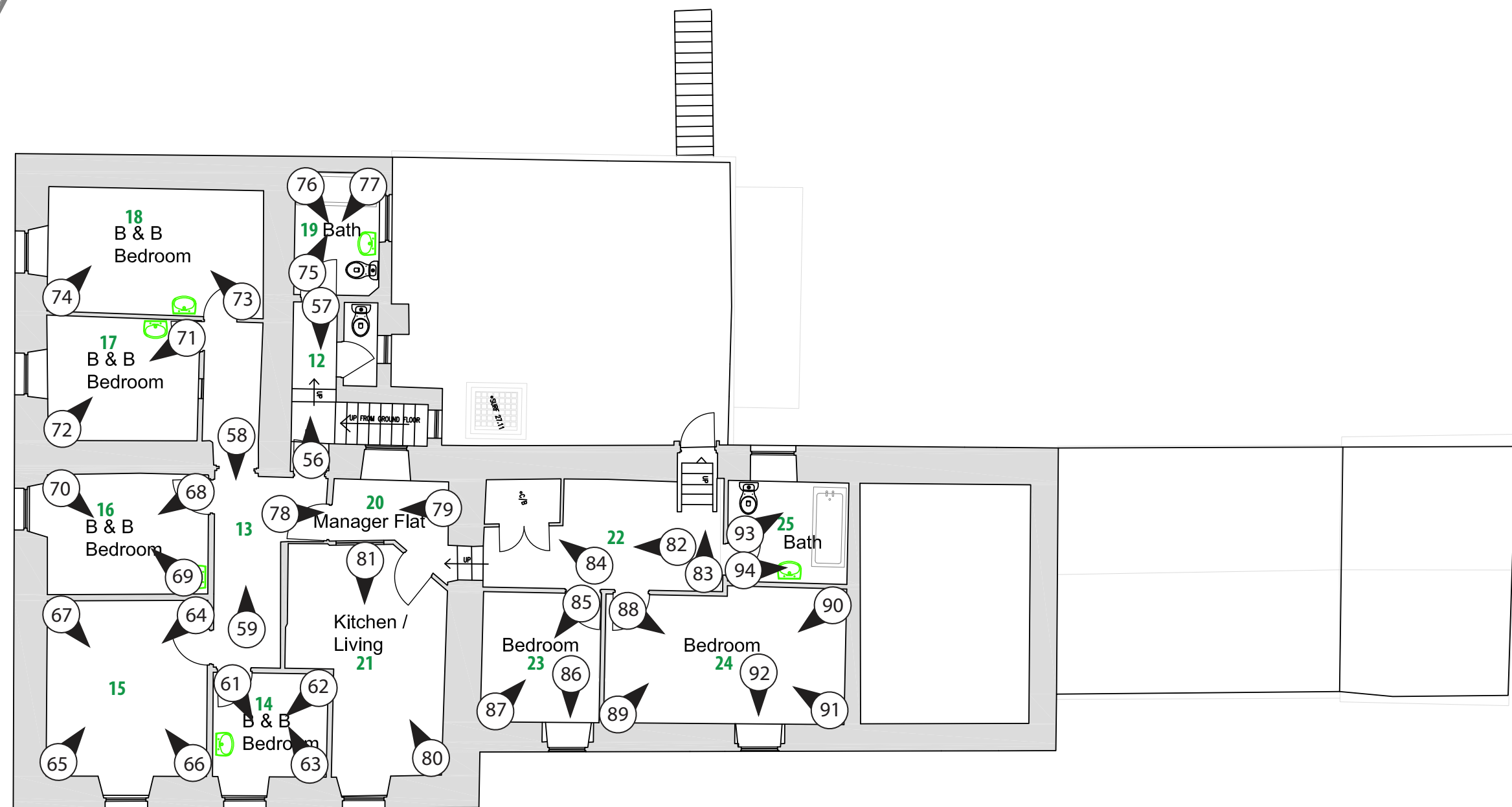
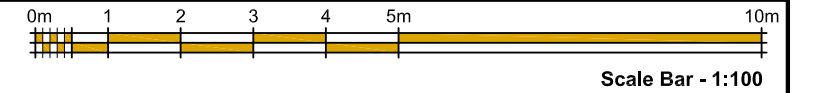
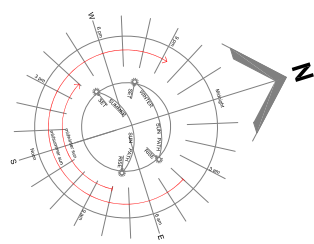


Figure 01:

Plan of photo locations of exterior elevations of the Crown Hotel, Bodedern



Ymddiriedolaeth Archaeolegol Gwynedd
Gwynedd Archaeological Trust



Existing First Floor Plan

Figure 03:

Plan of photo locations of existing first floor in the Crown Hotel, Bodedern



Ymddiriedolaeth Archaeolegol Gwynedd
Gwynedd Archaeological Trust

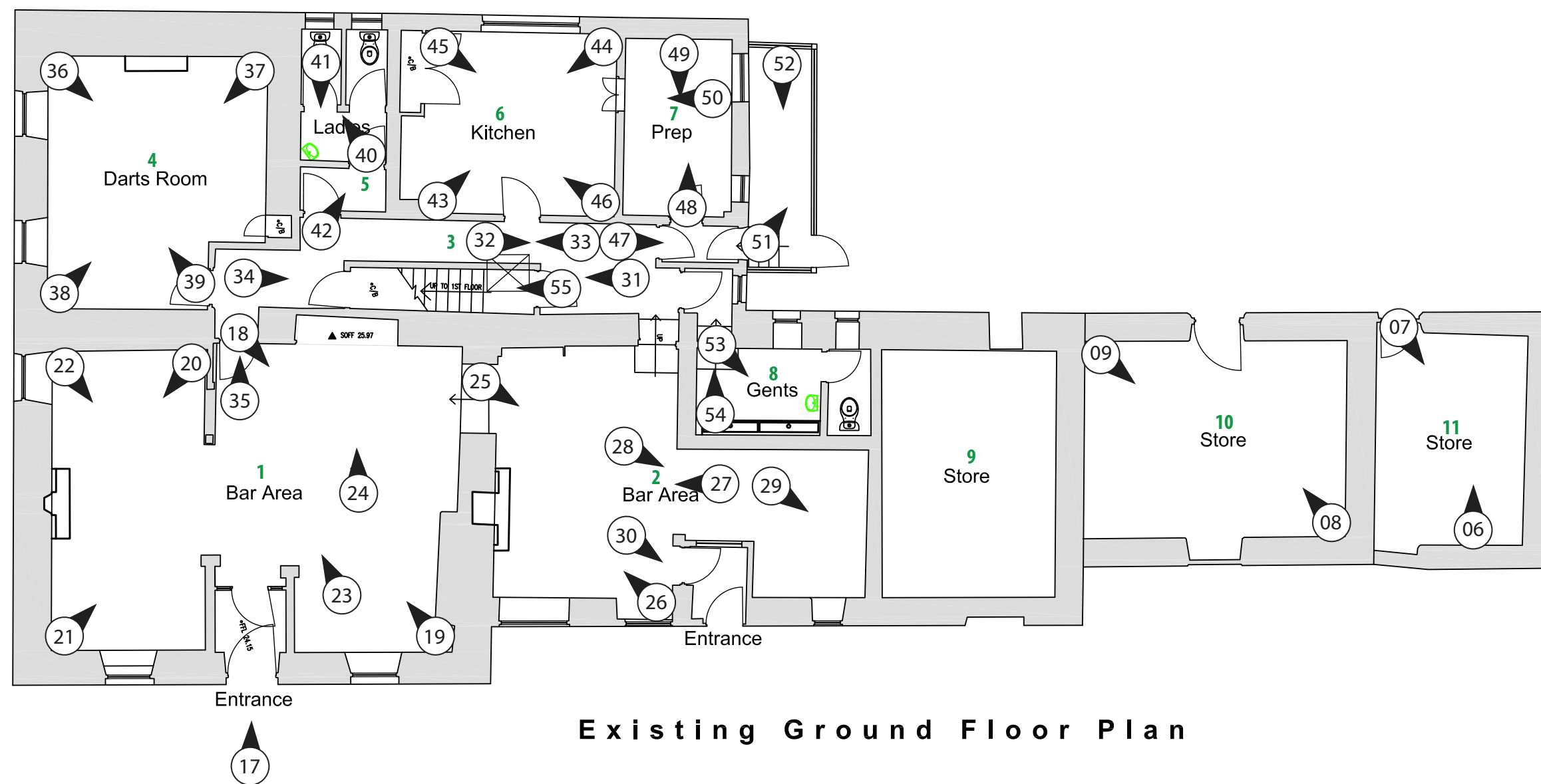
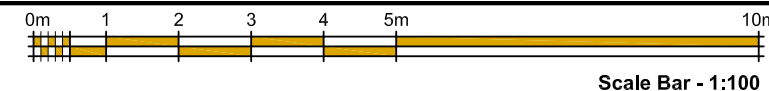
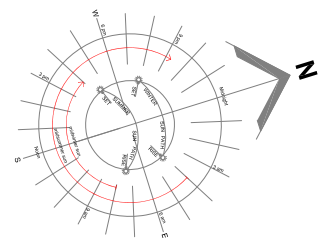


Figure 02:

Plan of photo locations of existing ground floor in the Crown Hotel, Bodedern



Ymddiriedolaeth Archaeolegol Gwynedd
Gwynedd Archaeological Trust

APPENDIX I

Gwynedd Archaeological Trust Written Scheme of Investigation

CROWN HOTEL, BODEDERN (G2758)

WRITTEN SCHEME OF INVESTIGATION FOR ARCHAEOLOGICAL MITIGATION: PHOTOGRAPHIC SURVEY

Prepared for

SBJJ Group

November 2022



Ymddiriedolaeth Archaeolegol Gwynedd
Gwynedd Archaeological Trust

All GAT staff should sign their copy to confirm the project specification is read and understood and retain a copy of the specification for the duration of their involvement with the project. On completion, the specification should be retained with the project archive:

Name

Signature

Date

CROWN HOTEL, BODEDERN (G2758)

WRITTEN SCHEME OF INVESTIGATION FOR ARCHAEOLOGICAL MITIGATION: PHOTOGRAPHIC SURVEY

Prepared for *SBJJ Group*, November 2022

1	INTRODUCTION.....	6
1.1	Aims and Objectives.....	8
1.2	Monitoring Arrangements	8
1.3	Historic Environment Record	8
2	METHOD STATEMENT	9
2.1	Introduction.....	9
2.2	Photographic Record.....	10
2.3	Written Record.....	12
2.4	Drawn Record.....	13
2.5	Selection Strategy & Data Management Plan	14
2.6	Reporting	15
2.7	Dissemination & Archiving	16
3	PERSONNEL	17
4	HEALTH AND SAFETY	18
5	social media	19
6	INSURANCE	20
6.1	Public/Products Liability.....	20
6.2	Employers Liability.....	20
6.3	Professional Indemnity	20
7	SOURCES CONSULTED	21
	Figure 01.....	22
	Site Location. Based on Fisher German LLP Drawing No. 131294-0. Scale: As Shown. .	22
	Figure 02.....	23
	Reproduction of Curvature Drawing No. 21137/03. Scale: As Shown.....	23
	Figure 03.....	24
	Reproduction of <i>BR Architecture Drawing Nos. BR:CROWN:SU01 and BR:CROWN:SU02.</i> Scales: As Shown.....	24
	Appendix I.....	25
	Gwynedd Archaeological Trust Photographic Metadata Pro-Forma	25
	Appendix II.....	26
	Gwynedd Archaeological Trust Building Record pro-forma.....	26
	Appendix III	27

Gwynedd Archaeological Trust room recording pro-forma	27
Appendix IV	28
Gwynedd Archaeological Trust Selection Strategy.....	28

1 INTRODUCTION

Gwynedd Archaeological Trust (GAT) has been commissioned by *SBJJ Group* to undertake archaeological mitigation prior to alterations and extensions to the existing Crown Hotel public house together with creating three residential apartments at Bodedern, Ynys Môn, LL65 3TU (NGR SH33398043 cf. [Figure 01](#)). The public house is a slate-roofed detached two storey structure as detailed on *Curvasure Drawing No. 21137/03* ([Figure 02](#)) and *BR Architecture Drawing Nos. BR:CROWN:SU01* and *BR:CROWN:SU02* ([Figure 03](#)). The development is being undertaken as part of planning application FPL/2022/50 and Condition 7. The archaeological mitigation will be undertaken in accordance with these requirements and will be commensurate to a Photographic Survey as defined in *Understanding Historic Buildings: A guide to good recording practice* (Historic England, 2016). A Photographic Survey provides a very full visual record, but without a written or drawn survey at a comparable level of detail.

The photographic survey will be undertaken in November 2022 and all work will be planned, managed and undertaken by GAT in accordance with the following standards and guidance:

- Guidance for the Submission of Data to the Welsh Historic Environment Records (HERs) Version 2 (The Welsh Archaeological Trusts, 2020);
- Guidelines for digital archives (Royal Commission on Ancient and Historic Monuments of Wales, 2015).
- Gwynedd Archaeological Planning Service Requirements for General Photographic Surveys of Buildings, 2010
- Management of Archaeological Projects (English Heritage, 1991);
- Management of Research Projects in the Historic Environment: The MoRPHE Project Managers' Guide (Historic England, 2015);
- Standard and Guidance for the Archaeological Investigation and Recording of Standing Buildings or Structures (Chartered Institute for Archaeologists, 2014);
- Standard and guidance for the collection, documentation, conservation and research of archaeological materials (Chartered Institute for Archaeologists, 2014); and
- Understanding Historic Buildings: A Good to Good Recording Practice (Historic England, 2016).

An archaeological watching brief will be undertaken during the extensions to the Crown Hotel and construction of the three residential apartments. The written scheme of investigation for this will be prepared separately.

Gwynedd Archaeological Trust is certified to ISO 9001:2008 and ISO 14001:2004 (Cert. No. 74180/A/0001/UK/En), a Registered Organisation with the Chartered Institute for Archaeologists (CIfA), and a member of the Federation of Archaeological Managers and Employers (FAME).

1.1 Aims and Objectives

The key aims and objectives are to:

- Complete descriptive record of The Crown Hotel public house sufficient to provide a full visual record.

1.2 Monitoring Arrangements

The archaeological mitigation will be monitored by the Gwynedd Archaeological Plannign Service (GAPS); both the written scheme of investigation and all subsequent reporting must be approved by GAPS before final issue. GAPS contact details are:

- Tom Fildes | tom.fildes@heneb.co.uk | 07920264232.

1.3 Historic Environment Record

In line with the regional Historic Environment Record (HER) requirements, the HER will be contacted at the onset of the project to ensure that any data arising is formatted in a manner suitable for accession to the HER and follows the guidance set out in *Guidance for the Submission of Data to the Welsh Historic Environment Records (HERs)* (The Welsh Archaeological Trusts, 2022). In line with this guidance, all submitted reporting will need to include the equivalent of a non-technical summary in Welsh and English at the front of the report combined with short bilingual summaries of the principal Historic Assets recorded during the event. These requirements are mandatory.

The HER enquiry number for this project is GATHER1760 and the Event Primary Reference Number is 46514.

2 METHOD STATEMENT

2.1 Introduction

The archaeological mitigation will be undertaken as a Photographic Survey, as defined by *Understanding Historic Buildings: A Good to Good Recording Practice* (Historic England, 2016). A photographic survey provides a very full visual record, but without a written or drawn survey at a comparable level of detail. A comprehensive photographic survey may be called for when recording a building for which there is no need for detailed analysis. It may also be appropriate for recording a building of well-known type which is under threat, but where existing documentation is in other respects adequate, or when for some other reason drawings and historical analysis are not required. The Photographic Survey will incorporate the exterior and interior of the building as detailed in *Curvasure Drawing No. 21137/03* ([Figure 02](#)) and *BR Architecture Drawing Nos. BR:CROWN:SU01* and *BR:CROWN:SU02* ([Figure 03](#)).

2.2 Photographic Record

The Photographic Record will include the following as a minimum:

- A general view or views of the building (in its wider setting or landscape).
- The building's external appearance. Typically a series of oblique views that will show all external elevations of the building, and give an overall impression of its size, shape and immediate setting. Where individual elevations include complex historical information it may also be appropriate to take views at right-angles to the plane of the elevation. Images received suggest oblique views will be necessary, due to the proximity of neighbouring buildings restricting space. In this instance, there is limited access and visibility of the north elevation, which represents the side of the building; an oblique image will be taken of this elevation
- The overall appearance of the principal rooms and circulation areas. Based on *Curvasure Drawing No. 21137/03* ([Figure 02](#)) and *BR Architecture Drawing Nos. BR:CROWN:SU01* and *BR:CROWN:SU02* ([Figure 03](#)), there is a ground floor (comprising two bar areas, a darts room, ladies and gents' toilets, a kitchen and prep room, and three storage area) and a first floor (including six bedrooms, two bathrooms, a manager's flat and a kitchen/living area).
- Any external or internal detail, structural or decorative, which is relevant to the building's design, development and use, with scale where appropriate.
- A photographic register detailing the photo number, the location and direction of each view, and the composition of the shot.
- Photograph locations and directions of view marked on plans. In this instance, *BR Architecture Drawing Nos. BR:CROWN:SU01* and *BR:CROWN:SU02* ([Figure 03](#)) will be used.
- Photographs should be of archive quality using a digital SLR (minimum 12 megapixel)
- Photographs, where appropriate (i.e. not general shots) should include a clearly visible, graduated metric scale.
- Photographs should be adequately lit and not blurry. With all images checked on site.

Photographic images will be taken using a digital SLR (Nikon D5100) camera set to maximum resolution (4928 × 3264; 16.2 effective megapixels) in RAW format. Camera tripods and poles will be used for the elevations and where practical elsewhere. A photographic record will maintained on site using GAT pro-formas ([Appendix III](#)) and

digitised in Microsoft Excel and Access as part of the fieldwork archive and dissemination process; the archive numbering system will start from G2758_001. The location and orientation of photographs taken will be recorded on a scaled plan and digitised for final reporting. The photographic images will then be converted to TIFF for final archiving using Adobe Photoshop.

2.3 Written Record

As a minimum, the Written Record will comprise of:

- The precise location of the building as an address and in the form of a National Grid reference.
- A note of any statutory designation (that is, listing, scheduling, Register of Historic Parks and Gardens, conservation area), where applicable. Information on statutory designations can be found on the CADW website. Non-statutory designations (local lists) may be added. *Note: the building is not listed and does not currently have a Primary Reference Number assigned by the regional Historic Environment Record.*
- The date when the record was made, the name(s) of the recorder(s) and the location of any archive material.
- A summary statement. This account should describe the buildings type and purpose, historically and at present, its materials and possible date(s), so far as these are apparent from a superficial inspection.. The photographic record will aim to document evidence for any phasing.

A basic written record will be completed using a building record pro-forma ([Appendix II](#)) and a room record pro-forma ([Appendix III](#)) to assist with archiving and reporting.

2.4 Drawn Record

As a minimum, the Drawn Record will comprise of:

- A plan showing the location and direction of view of each photograph. In this instance, the scaled plans detailed in *BR Architecture Drawing Nos. BR:CROWN:SU01* and *BR:CROWN:SU02* ([Figure 03](#)) will be used for reference and as a base plan.

2.5 Selection Strategy & Data Management Plan

As stated in *Standard and guidance for the creation, compilation, transfer and deposition of archaeological archives* (Chartered Institute for Archaeologists, 2020), para. 3.3.1, “Project specifications, research designs or similar documents should include a project- specific Selection Strategy and a Data Management Plan. The Chartered Institute for Archaeologists states that “(I)t is widely accepted that not all the records and materials collected or created during the course of an Archaeological Project require preservation in perpetuity. These records and materials constitute the Working Project Archive which will be subject to Selection, in order to establish what will be retained for long-term curation” (<https://www.archaeologists.net/selection-toolkit>). The working project archive in this instance will comprise digital data including photographic data, documentation and written data, as well as paper records, including project pro-formas. The Data Management Plan will be stored on a project specific form in the GAT project database (format: *Microsoft Access*) and the Selection Strategy will be based on a GAT pro-forma (cf. [Appendix IV](#)) that will be appended to the final report.

This working project archive data will be processed as follows:

1. Pro-formas: all cross referenced and scanned for digital archiving;
2. Photographic Metadata: cross-referenced with all pro-formas and completed in *Microsoft Excel*;

Information from these will be used to compile the project report. The physical archive will be stored in a designated project folder and the location confirmed in the Data Management Plan; the digital dataset will be stored on a dedicated Trust server, with the location confirmed in the Data Management Plan via a specific hyperlink. External datasets for the HER and RCAHMW are as defined in the dissemination strategy below.

2.6 Reporting

The project report will include the following:

1. Front cover;
 2. Inner cover;
 3. Figures and Plates List;
 4. Non-technical summary (Welsh/English);
 5. Introduction;
 6. Methodology;
 7. Results;
 8. Conclusion
 9. Bibliography;
 10. Figures; inc.:
 - location plan;
 - location and orientation of images taken
 11. Plates; inc.
 - Illustrative examples from the Photographic Survey
 12. Appendix I (approved specification);
 13. Appendix II (Photographic metadata);
 14. Appendix III (Selection Strategy)
- Back cover.

2.7 Dissemination & Archiving

The following dissemination and archiving of the report and digital dataset will be applied:

- A digital report will be provided to *SBJJ Group* and Gwynedd Archaeological Planning Service (draft report then final report);
- A digital report will be provided to the regional Historic Environment Record; this will be submitted within six months of project completion, along with a digital dataset comprising an Event PRN summary. The report and dataset will be submitted in accordance with the required standards set out in *Guidance for the Submission of Data to the Welsh Historic Environment Records (HERs)* (Version 2); and
- A digital report and digital archive dataset will be provided to Royal Commission on Ancient and Historic Monuments, Wales (final report only), in accordance with the *RCAHMW Guidelines for Digital Archives Version 1*. The dataset will be prepared in the format required by RCAHMW and will include:
 - Photographic metadata (Microsoft Access);
 - Photographic archive (TIFF format);
 - Project Information form (Excel);
 - File Information form (Excel) – Microsoft Word report text final;
 - File Information form (Excel) – Photographic metadata (general);
 - File Information form (Excel) – Adobe PDF report final; and
 - File Information form (Excel) - Photographic metadata (detail).

3 PERSONNEL

The project will be managed by John Roberts, Principal Archaeologist GAT Contracts Section and undertaken by a Project Archaeologist. The Project Archaeologist will be responsible for the completion of all on site pro-formas and the photographic archive, as well as for submitting a draft final report for project manager review and approval. The report will then be submitted as per the arrangements defined above.

4 HEALTH AND SAFETY

A site specific risk assessment will be prepared and will be reviewed by the GAT Project Archaeologist in advance of works, with any additional risks identified on site highlighted in the dynamic risks section and appropriate mitigation undertaken. The GAT attendee will be issued with required personal safety equipment, including high visibility jacket, steel toe-capped boots and safety helmet. All site work will be managed and undertaken in accordance with the GAT Health & Safety Policy and Covid-19 guidelines.

If available, an asbestos survey will be consulted prior to and during site attendance.

5 SOCIAL MEDIA

One of the key aims in the GAT mission statement is to improve the understanding, conservation and promotion of the historic environment in our area and inform and educate the wider public. To help achieve this, GAT maintains an active social media presence and seeks all opportunities to promote our projects and results. With permission, GAT would like the opportunity to promote our work on this scheme through our social media platforms. This could include social media postings during our attendance on site as well as any postings to highlight results. In all instances, approval will be sought from client prior to any postings.

6 INSURANCE

6.1 Public/Products Liability

Limit of Indemnity- £5,000,000 any one event in respect of Public Liability

INSURER Aviva Insurance Limited

POLICY TYPE Public Liability

POLICY NUMBER 24765101CHC/UN/000375

EXPIRY DATE 21/06/2023

6.2 Employers Liability

Limit of Indemnity- £10,000,000 any one occurrence.

The cover has been issued on the insurers standard policy form and is subject to their usual terms and conditions. A copy of the policy wording is available on request.

INSURER Aviva Insurance Limited

POLICY TYPE Employers Liability

POLICY NUMBER 24765101 CHC / UN/000375

EXPIRY DATE 21/06/2023

6.3 Professional Indemnity

Limit of Indemnity- £5,000,000 in respect of each and every claim

INSURER Hiscox Insurance Company Limited

POLICY TYPE Professional Indemnity

POLICY NUMBER 9446015

EXPIRY DATE 22/07/2023

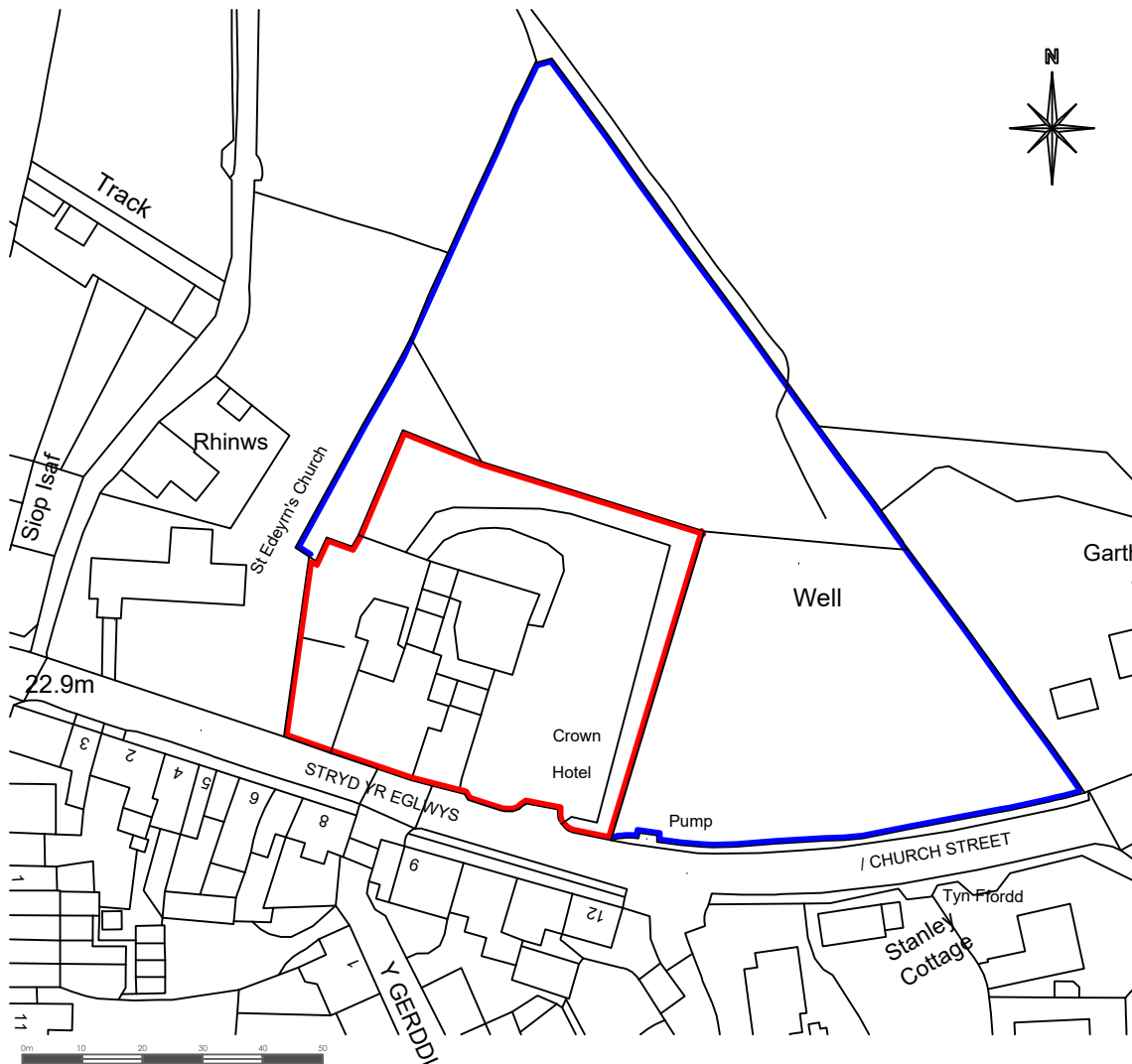
7 SOURCES CONSULTED

1. Chartered Institute for Archaeologists, 2020, Standard and Guidance for the Archaeological Investigation and Recording of Standing Buildings or Structures
2. Chartered Institute for Archaeologists, 2020, Standard and guidance for the collection, documentation, conservation and research of archaeological materials
3. English Heritage, 1991, Management of Archaeological Projects (MAP2)
4. Historic England, 2015, Management of Research Projects in the Historic Environment (MoRPHE)
5. Historic England, 2016. *Understanding Historic Buildings: A Good to Good Recording Practice*
6. Royal Commission on Ancient and Historic Monuments of Wales, 2015, Guidelines for digital archives
7. The Welsh Archaeological Trusts, 2022. *Guidance for the Submission of Data to the Welsh Historic Environment Records (HERs) Version 2.*

FIGURE 01

Site Location. Based on Fisher German LLP Drawing No. 131294-0.

Scale: As Shown.



Rev	Date	Revision Details
-	-	-
-	-	-
-	-	-



Fisher German LLP, 4 Vicars Lane
Chester, Cheshire, CH1 1QU
fax: 01244 315954 tel: 01244 409660

Client: **SBJJ Group Ltd**

Project: **The Crown Hotel, Church Street, Boderderm, Holyhead**

Title: **Location plan**

Scale: **1:1250 @ A4**

Date: **November 2021**

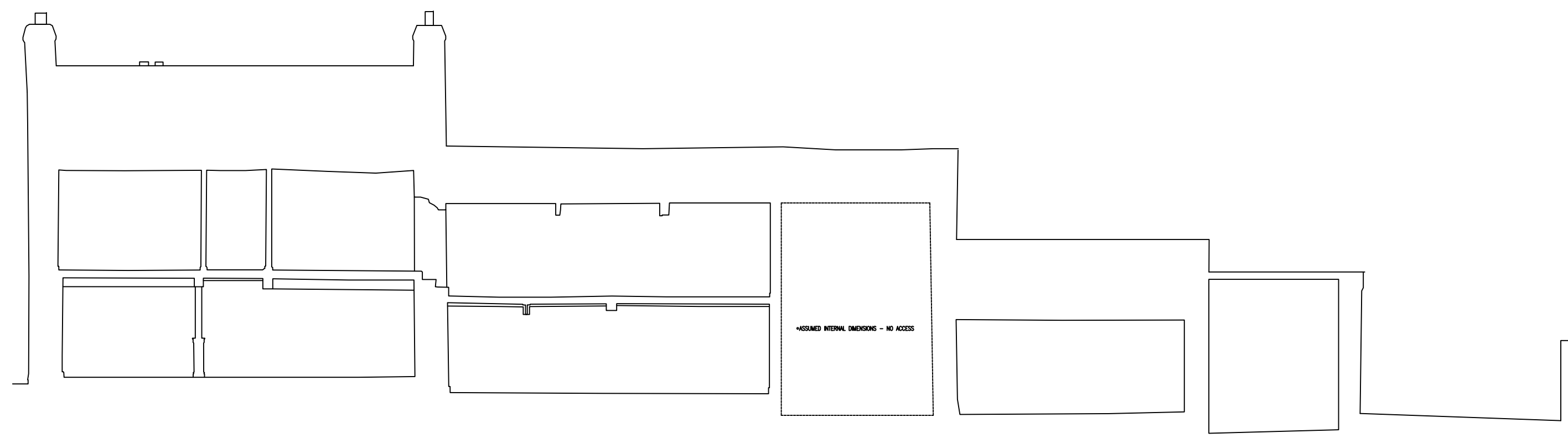
Drawn: **KT** Checked: **NB**

Drg No: **131294-01**

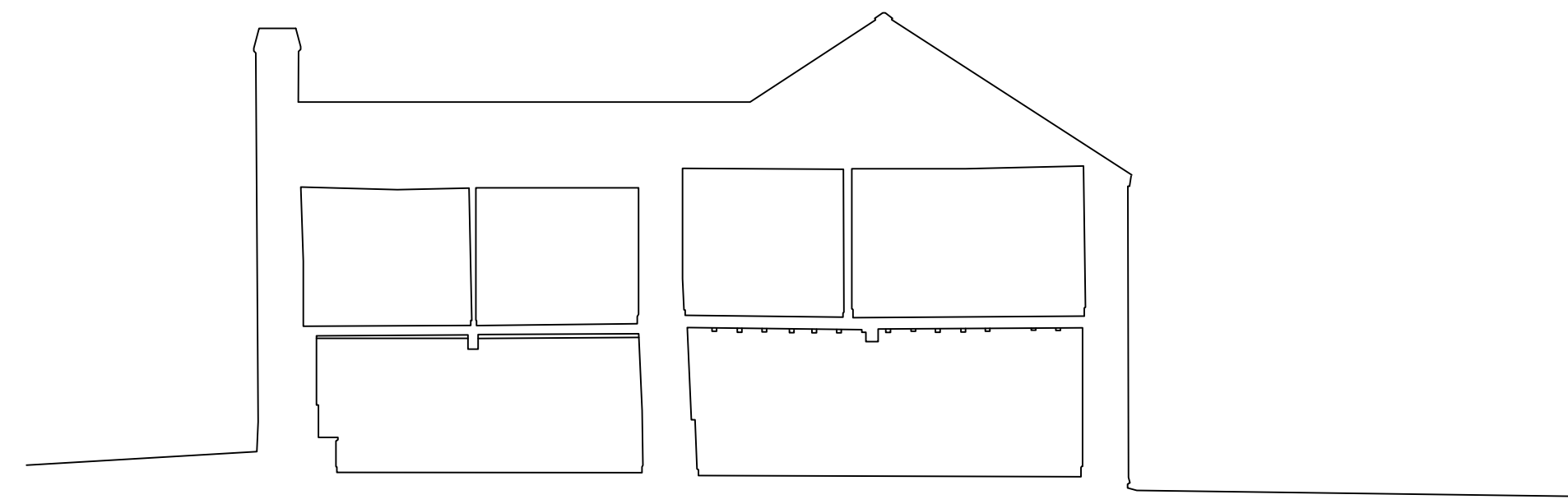
THIS DRAWING IS PROTECTED BY COPYRIGHT. IT MAY NOT BE REPRODUCED IN ANY FORM OR BY ANY MEANS FOR ANY PURPOSE WITHOUT WRITTEN PERMISSION OF FISHER GERMAN LLP CHARTERED SURVEYORS.
FISHER GERMAN LLP IS A LIMITED LIABILITY PARTNERSHIP.
REGISTERED IN ENGLAND AND WALES. REGISTERED NUMBER: OC317564.
REPRODUCED USING ORDNANCE SURVEY DATA. CROWN COPYRIGHT.
ALL RIGHTS RESERVED. LICENCE NUMBER: 100005237

FIGURE 02

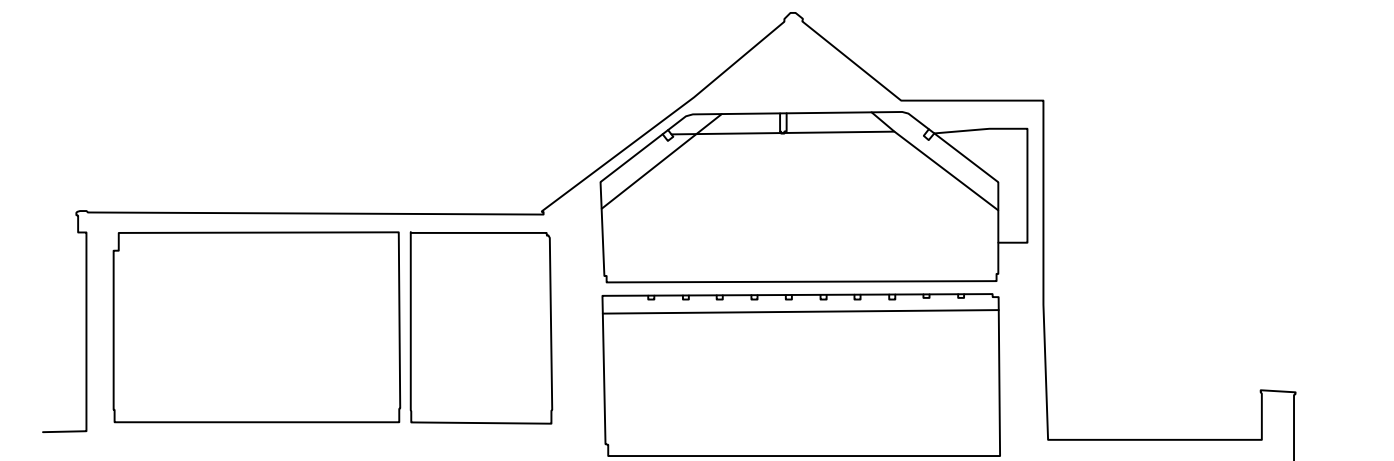
Reproduction of Curvasure Drawing No. 21137/03. Scale: As Shown.



SECTION X-X



SECTION Y-Y



SECTION Z-Z

22M DATUM

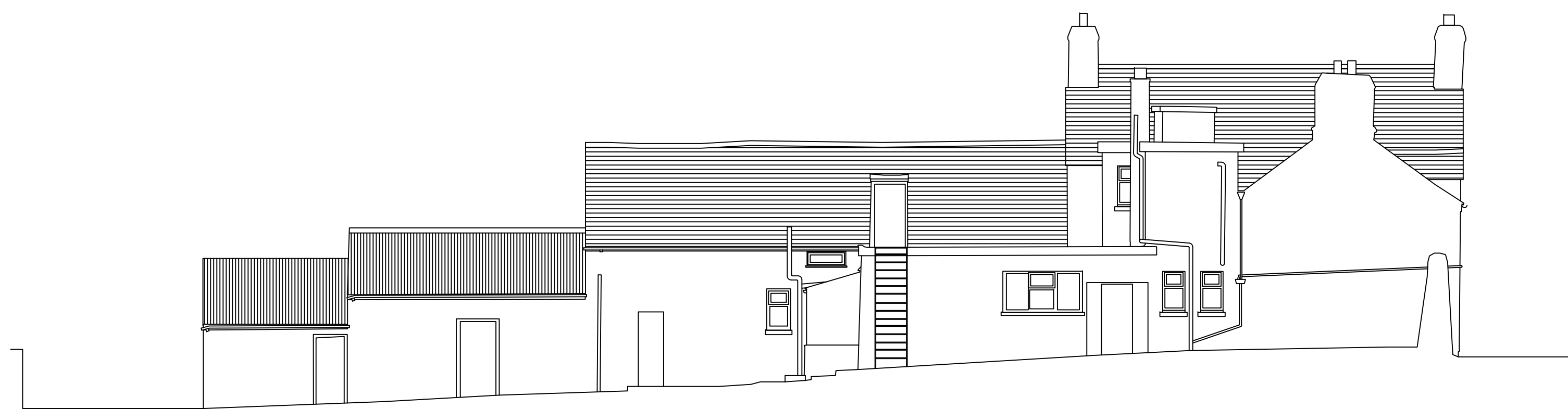


SOUTH ELEVATION



EAST ELEVATION

22M DATUM



WEST ELEVATION



NORTH ELEVATION

22M DATUM

Title: EXISTING ELEVATIONS & SECTIONS
THE CROWN HOTEL
BODEDERN

Client:

Notes:
1. Grid - tied into OS grid using OSGB 36
2. Datum - tied into OS datum using OSGB 36
3. Survey orientated to grid north

SCALE: 1:100/8A0 DATE: 08/09/21 CHECKED: SR DWG NO: 21137/03

Survey data and drawings produced by:

CURVASURE
PROFESSIONAL CONSTRUCTION

Curvature Limited a company registered in England and Wales. Company No. 4830127

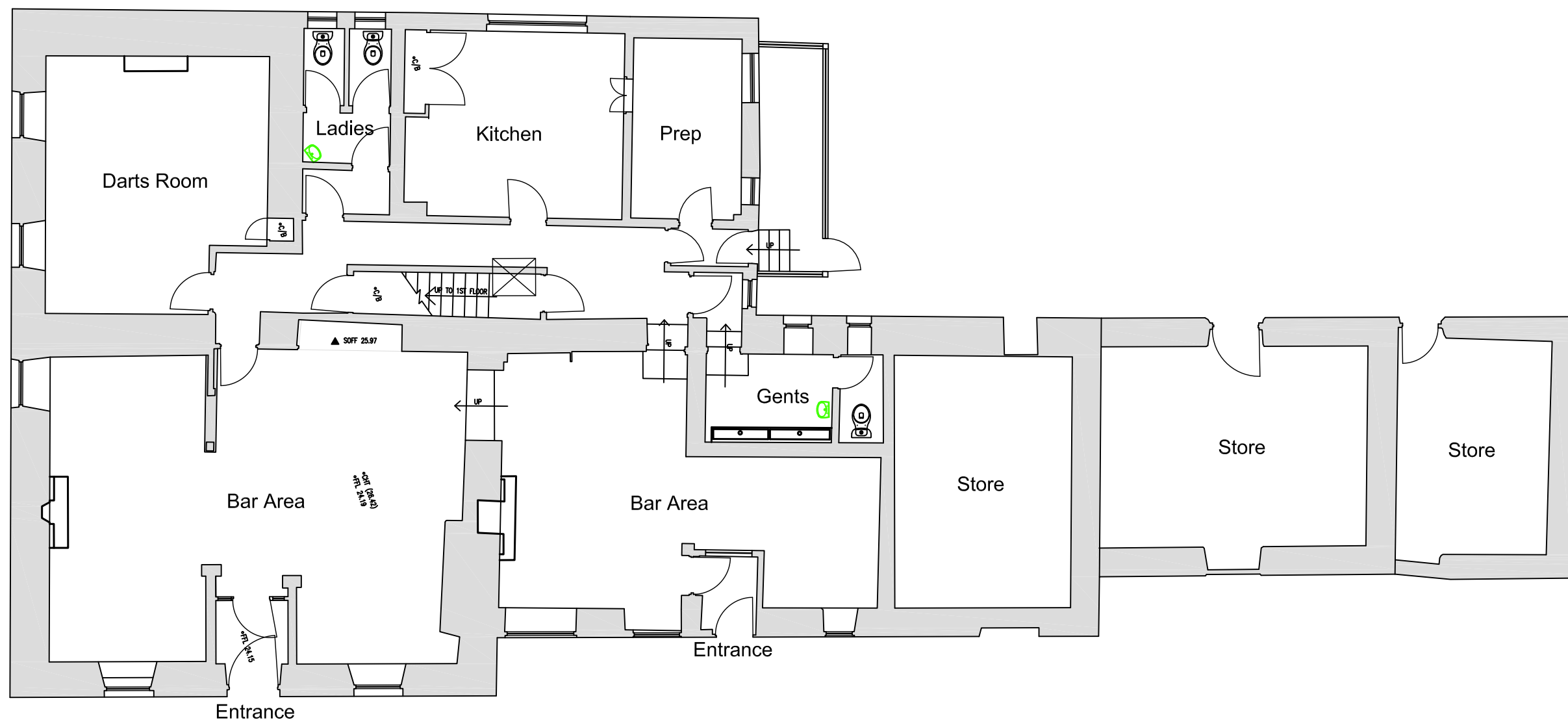
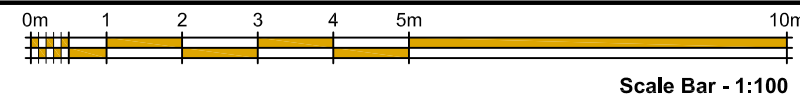
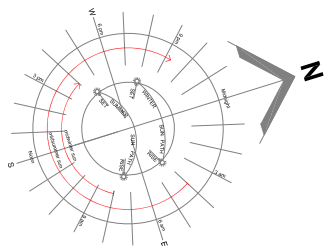
Registered Office: 1st Floor Office, 73 Rhos Promenade, Rhos on Sea, LL28 4EN

101492 544320 m029793 459236 101492 544320 eoadmin@curvature.co.uk


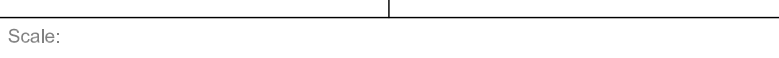
www.curvature.co.uk

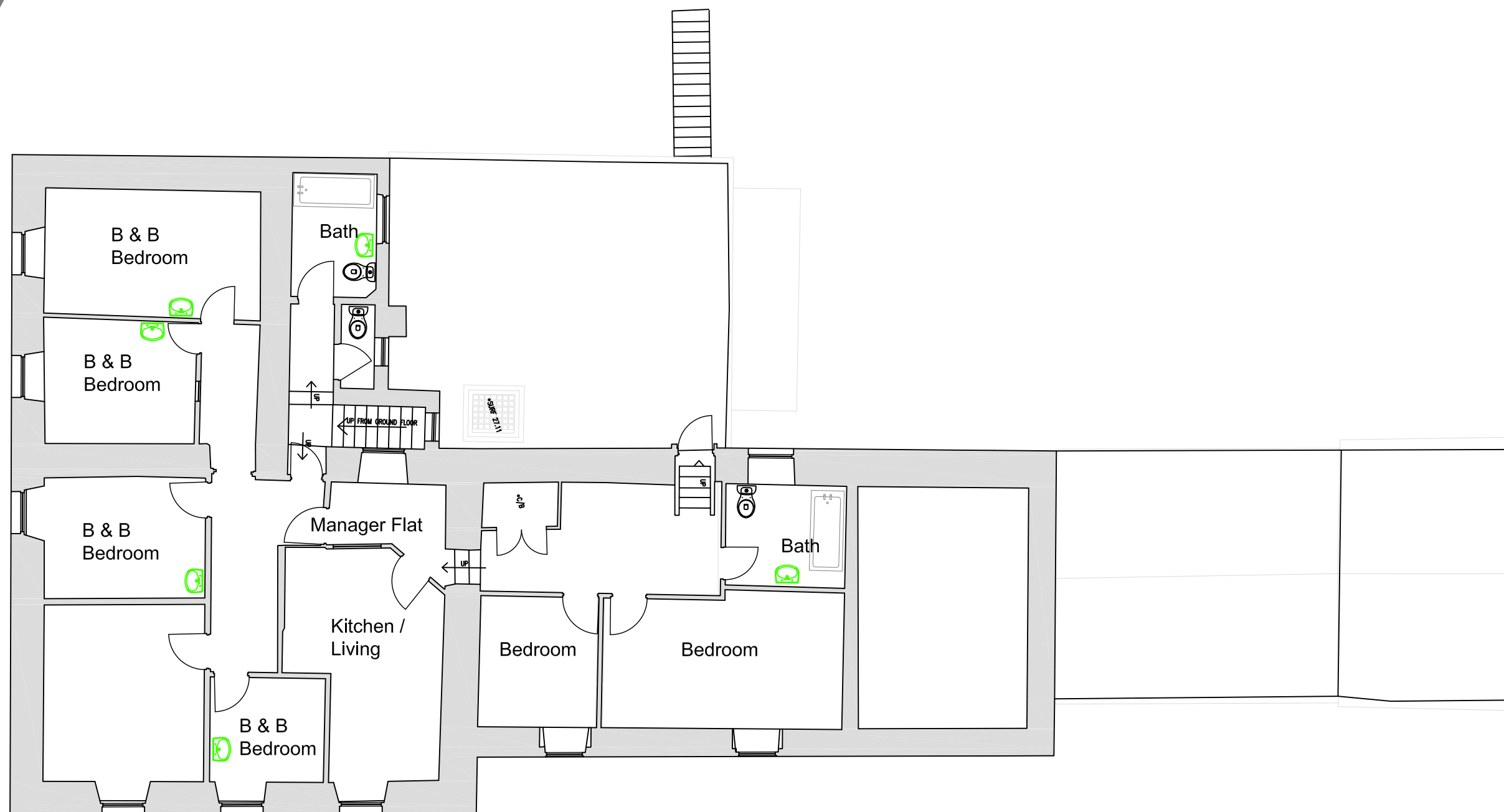
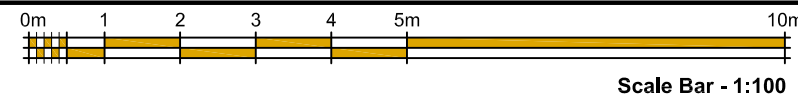
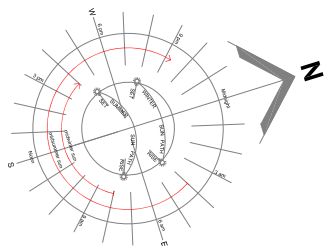
FIGURE 03

Reproduction of *BR Architecture Drawing Nos. BR:CROWN:SU01 and BR:CROWN:SU02. Scales: As Shown.*


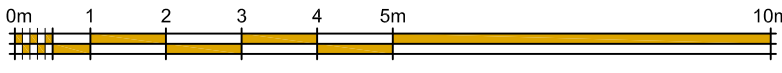


Existing Ground Floor Plan

Orientation:	Revision:		Project: Proposed Extension and Alterations	Client: Bali Kaur			BR Architecture The Stables, Colwyn Road Llandudno, LL30 3AL t - 07789 175903 e - info@brarchitecture.com w - www.brarchitecture.com	
				Location: The Crown Hotel Church Street, Bodedern Anglesey, LL65 3TU				
	Scale: 		Drawing: Existing Ground Floor Plan (Existing Drawing)	Scale: 1:100		Paper: A3		



Existing First Floor Plan

Orientation:	Revision:	Project: Proposed Extension and Alterations	Client: Bali Kaur			BR Architecture The Stables, Colwyn Road Llandudno, LL30 3AL t - 07789 175903 e - info@brarchitecture.com w - www.brarchitecture.com	
			Location: The Crown Hotel Church Street, Bodedern Anglesey, LL65 3TU				
	Scale:  Scale Bar - 1:100		Drawing: Existing First Floor Plan (Existing Drawing)		Scale: 1:100 Paper: A3 Date: Jan. 2022		

APPENDIX IV

Gwynedd Archaeological Trust Selection Strategy

APPENDIX II

Gwynedd Archaeological Trust Photographic Metadata

PHOTO RECORD NUMBER*	SITE SUB- DIVISION	DESCRIPTION*	CONTEXT NUMBER (S)	VIEW FROM	SCALE	CREATOR OF DIGITAL PHOTO*	DATE	ORIGINATING ORGANISATION	PLATE
G2758_01	Exterior	View of east elevation of Crown Hotel		E	1m	Bethan Jones	14/12/22	Gwynedd Archaeological Trust	1
G2758_02	Exterior	View of main entrance and original 19th cen. Building of Crown Hotel		E	1m	Bethan Jones	14/12/22	Gwynedd Archaeological Trust	2
G2758_03	Exterior	Oblique view of later 19th cen addition and 21st cen. pergola beer garden		SE	1m	Bethan Jones	14/12/22	Gwynedd Archaeological Trust	3
G2758_04	Exterior	View of store rooms 09-11		SE	1m	Bethan Jones	14/12/22	Gwynedd Archaeological Trust	4
G2758_05	Exterior	Oblique view of north gable and west elevation of Crown Hotel, with attached store rooms		NW	1m	Bethan Jones	14/12/22	Gwynedd Archaeological Trust	5
G2758_06	Room 11	View of white painted rubble stone store 11	Store (11)	E	1m	Bethan Jones	14/12/22	Gwynedd Archaeological Trust	6
G2758_07	Room 11	View of white painted rubble stone store 11	Store (11)	W	1m	Bethan Jones	14/12/22	Gwynedd Archaeological Trust	7
G2758_08	Room 10	View of large plastered and white painted store 10	Store (10)	NE	1m	Bethan Jones	14/12/22	Gwynedd Archaeological Trust	8
G2758_09	Room 10	View of large plastered and white painted store 10	Store (10)	SW	1m	Bethan Jones	14/12/22	Gwynedd Archaeological Trust	9
G2758_10	Exterior	Oblique view of west elevation of Crown Hotel		NW	1m	Bethan Jones	14/12/22	Gwynedd Archaeological Trust	10

PHOTO RECORD NUMBER*	SITE SUB- DIVISION	DESCRIPTION*	CONTEXT NUMBER (S)	VIEW FROM	SCALE	CREATOR OF DIGITAL PHOTO*	DATE	ORIGINATING ORGANISATION	PLATE
G2758_11	Exterior	View of conservatory and patio area		NW	1m	Bethan Jones	14/12/22	Gwynedd Archaeological Trust	11
G2758_12	Exterior	View of Store 9 entrance	Store (9)	W	1m	Bethan Jones	14/12/22	Gwynedd Archaeological Trust	12
G2758_13	Exterior	Oblique view of 20th cen. Extension at western elevation		NW	1m	Bethan Jones	14/12/22	Gwynedd Archaeological Trust	13
G2758_14	Exterior	View of double gated access into Crown Hotel (at rear)		N	1m	Bethan Jones	14/12/22	Gwynedd Archaeological Trust	14
G2758_15	Exterior	Oblique view of Crown Hotel East elevation		NE	1m	Bethan Jones	14/12/22	Gwynedd Archaeological Trust	15
G2758_16	Exterior	View of south gable elevation of Crown Hotel		SE	1m	Bethan Jones	14/12/22	Gwynedd Archaeological Trust	16
G2758_17	Room 1	View of entrance into Bar Area 1	Bar Area (1)	E	1m	Bethan Jones	14/12/22	Gwynedd Archaeological Trust	17
G2758_18	Room 1	View of main Bar Area 1	Bar Area (1)	W	1m	Bethan Jones	14/12/22	Gwynedd Archaeological Trust	18
G2758_19	Room 1	View of Bar Area 1 partition and entrance into room 3	Bar Area (1)	NE	1m	Bethan Jones	14/12/22	Gwynedd Archaeological Trust	19
G2758_20	Room 1	View of 1970s stone fire place in Bar Area 1	Bar Area (1)	NW	1m	Bethan Jones	14/12/22	Gwynedd Archaeological Trust	20

PHOTO RECORD NUMBER*	SITE SUB- DIVISION	DESCRIPTION*	CONTEXT NUMBER (S)	VIEW FROM	SCALE	CREATOR OF DIGITAL PHOTO*	DATE	ORIGINATING ORGANISATION	PLATE
G2758_21	Room 1	View of partition and former bar in Bar Area 1	Bar Area (1)	SE	1m	Bethan Jones	14/12/22	Gwynedd Archaeological Trust	21
G2758_22	Room 1	View from SW corner of Bar Area 1 with entrance.	Bar Area (1)	SW	1m	Bethan Jones	14/12/22	Gwynedd Archaeological Trust	22
G2758_23	Room 1	View of partition and fireplace in Bar Area 1	Bar Area (1)	NE	1m	Bethan Jones	14/12/22	Gwynedd Archaeological Trust	23
G2758_24	Room 1	View of remains of former bar	Bar Area (1)	E	1m	Bethan Jones	14/12/22	Gwynedd Archaeological Trust	24
G2758_25	Room 2	View into Bar Area 2 taken from former bar	Bar Area (2)	SW	1m	Bethan Jones	14/12/22	Gwynedd Archaeological Trust	25
G2758_26	Room 2	View of remnants of bar and stone fire place	Bar Area (2)	NE	1m	Bethan Jones	14/12/22	Gwynedd Archaeological Trust	26
G2758_27	Room 2	View of stone fire place	Bar Area (2)	N	1m	Bethan Jones	14/12/22	Gwynedd Archaeological Trust	27
G2758_28	Room 2	Smaller area in Bar Area 2	Bar Area (2)	W	1m	Bethan Jones	14/12/22	Gwynedd Archaeological Trust	28
G2758_29	Room 2	Smaller area in Bar Area 2	Bar Area (2)	SW	1m	Bethan Jones	14/12/22	Gwynedd Archaeological Trust	29
G2758_30	Room 2	View of exit into beer garden from Bar Area 2	Bar Area (2)	SW	1m	Bethan Jones	14/12/22	Gwynedd Archaeological Trust	30

PHOTO RECORD NUMBER*	SITE SUB- DIVISION	DESCRIPTION*	CONTEXT NUMBER (S)	VIEW FROM	SCALE	CREATOR OF DIGITAL PHOTO*	DATE	ORIGINATING ORGANISATION	PLATE
G2758_31	Room 3	View of hallway (3) showing stair case to first floor	Hall (3)	N	1m	Bethan Jones	14/12/22	Gwynedd Archaeological Trust	31
G2758_32	Room 3	View of hall leading to gents and prep room	Hall (3)	S	1m	Bethan Jones	14/12/22	Gwynedd Archaeological Trust	32
G2758_33	Room 3	View of length of hall	Hall (3)	N	1m	Bethan Jones	14/12/22	Gwynedd Archaeological Trust	33
G2758_34	Room 3	View of hall showing storage below stairs and alcove partition	Hall (3)	S	1m	Bethan Jones	14/12/22	Gwynedd Archaeological Trust	34
G2758_35	Room 3	View of hall from Bar Area 1	Hall (3)	E	1m	Bethan Jones	14/12/22	Gwynedd Archaeological Trust	35
G2758_36	Room 4	View of entrance into Darts room	Darts Room (4)	SW	1m	Bethan Jones	14/12/22	Gwynedd Archaeological Trust	36
G2758_37	Room 4	View of S facing window of darts room	Darts Room (4)	NW	1m	Bethan Jones	14/12/22	Gwynedd Archaeological Trust	37
G2758_38	Room 4	View of darts room from SE	Darts Room (4)	SE	1m	Bethan Jones	14/12/22	Gwynedd Archaeological Trust	38
G2758_39	Room 4	View of darts room from entrance	Darts Room (4)	NE	1m	Bethan Jones	14/12/22	Gwynedd Archaeological Trust	39
G2758_40	Room 5	View of ladies lavatory	Ladies (5)	SE	1m	Bethan Jones	14/12/22	Gwynedd Archaeological Trust	40

PHOTO RECORD NUMBER*	SITE SUB- DIVISION	DESCRIPTION*	CONTEXT NUMBER (S)	VIEW FROM	SCALE	CREATOR OF DIGITAL PHOTO*	DATE	ORIGINATING ORGANISATION	PLATE
G2758_41	Room 5	View of "ladies" from west	Ladies (5)	W	1m	Bethan Jones	14/12/22	Gwynedd Archaeological Trust	41
G2758_42	Room 5	View of entrance into ladies from Hall (3)	Ladies (5)	SE	1m	Bethan Jones	14/12/22	Gwynedd Archaeological Trust	42
G2758_43	Room 6	View of kitchen area with window and cubby hole	Kitchen (6)	SE	1m	Bethan Jones	14/12/22	Gwynedd Archaeological Trust	43
G2758_44	Room 6	View of poss. Previous range area and airing cupboard	Kitchen (6)	NW	1m	Bethan Jones	14/12/22	Gwynedd Archaeological Trust	44
G2758_45	Room 6	View of boiler cupboard and window in kitchen area	Kitchen (6)	SW	1m	Bethan Jones	14/12/22	Gwynedd Archaeological Trust	45
G2758_46	Room 6	View of cubby hole and entrance of kitchen	Kitchen (6)	NE	1m	Bethan Jones	14/12/22	Gwynedd Archaeological Trust	46
G2758_47	Room 7	View of doorway leading into prep room and conservatory	Prep (7)	SW	1m	Bethan Jones	14/12/22	Gwynedd Archaeological Trust	47
G2758_48	Room 7	View of prep room	Prep (7)	E	1m	Bethan Jones	14/12/22	Gwynedd Archaeological Trust	48
G2758_49	Room 7	View of prep room and doorway	Prep (7)	W	1m	Bethan Jones	14/12/22	Gwynedd Archaeological Trust	49
G2758_50	Room 7	View of cubby hole into Room 6	Prep (7)	N	1m	Bethan Jones	14/12/22	Gwynedd Archaeological Trust	50

PHOTO RECORD NUMBER*	SITE SUB- DIVISION	DESCRIPTION*	CONTEXT NUMBER (S)	VIEW FROM	SCALE	CREATOR OF DIGITAL PHOTO*	DATE	ORIGINATING ORGANISATION	PLATE
G2758_51	Room 7	View of conservatory area	Prep (7)	SE	1m	Bethan Jones	14/12/22	Gwynedd Archaeological Trust	51
G2758_52	Room 7	View of conservatory area	Prep (7)	E	1m	Bethan Jones	14/12/22	Gwynedd Archaeological Trust	52
G2758_53	Room 8	View of "gents"	Gents (8)	SW	1m	Bethan Jones	14/12/22	Gwynedd Archaeological Trust	53
G2758_54	Room 8	View of entrance into "gents"	Gents (8)	E	1m	Bethan Jones	14/12/22	Gwynedd Archaeological Trust	54
G2758_55	Room 12	View of staircase leading up to first floor guest room and manager flat	Stairs & Hall (12)	W	1m	Bethan Jones	14/12/22	Gwynedd Archaeological Trust	55
G2758_56	Room 12	View of hall leading to bathroom (19)	Stairs & Hall (12)	E	1m	Bethan Jones	14/12/22	Gwynedd Archaeological Trust	56
G2758_57	Room 12	View of hall (12) leading to hallway (13) and B&B bedrooms	Stairs & Hall (12)	W	1m	Bethan Jones	14/12/22	Gwynedd Archaeological Trust	57
G2758_58	Room 13	View of hall from west	Hallway (13)	W	1m	Bethan Jones	14/12/22	Gwynedd Archaeological Trust	58
G2758_59	Room 13	View of hall from east end	Hallway (13)	E	1m	Bethan Jones	14/12/22	Gwynedd Archaeological Trust	59
G2758_60	Room 13	View of hall from west end	Hallway (13)	W	1m	Bethan Jones	14/12/22	Gwynedd Archaeological Trust	60

PHOTO RECORD NUMBER*	SITE SUB-DIVISION	DESCRIPTION*	CONTEXT NUMBER (S)	VIEW FROM	SCALE	CREATOR OF DIGITAL PHOTO*	DATE	ORIGINATING ORGANISATION	PLATE
G2758_61	Room 14	View of guest bedroom 14 with window	B&B Bedroom (14)	SW	1m	Bethan Jones	14/12/22	Gwynedd Archaeological Trust	61
G2758_62	Room 14	View of guest bedroom showing porceling sink and window	B&B Bedroom (14)	NW	1m	Bethan Jones	14/12/22	Gwynedd Archaeological Trust	62
G2758_63	Room 14	View of entrance into guest bedroom 14	B&B Bedroom (14)	NE	1m	Bethan Jones	14/12/22	Gwynedd Archaeological Trust	63
G2758_64	Room 15	View of large room with window	Room (15)	NW	1m	Bethan Jones	14/12/22	Gwynedd Archaeological Trust	64
G2758_65	Room 15	View of room 15 - showing plaster	Room (15)	SE	1m	Bethan Jones	14/12/22	Gwynedd Archaeological Trust	65
G2758_66	Room 15	View of room 15 with window	Room (15)	NE	1m	Bethan Jones	14/12/22	Gwynedd Archaeological Trust	66
G2758_67	Room 15	View of entrance to room 15	Room (15)	SW	1m	Bethan Jones	14/12/22	Gwynedd Archaeological Trust	67
G2758_68	Room 16	View of window in guest room 16 - from entrance	B&B Bedroom (16)	NW	1m	Bethan Jones	14/12/22	Gwynedd Archaeological Trust	68
G2758_69	Room 16	View of room 16	B&B Bedroom (16)	NE	1m	Bethan Jones	14/12/22	Gwynedd Archaeological Trust	69
G2758_70	Room 16	View of sink and entrance to guest room 16	B&B Bedroom (16)	SW	1m	Bethan Jones	14/12/22	Gwynedd Archaeological Trust	70

PHOTO RECORD NUMBER*	SITE SUB-DIVISION	DESCRIPTION*	CONTEXT NUMBER (S)	VIEW FROM	SCALE	CREATOR OF DIGITAL PHOTO*	DATE	ORIGINATING ORGANISATION	PLATE
G2758_71	Room 17	View of window in room 17 and ceiling decor	B&B Bedroom (17)	NE	1m	Bethan Jones	14/12/22	Gwynedd Archaeological Trust	71
G2758_72	Room 17	View of sink and entrance into guest room 17	B&B Bedroom (17)	SE	1m	Bethan Jones	14/12/22	Gwynedd Archaeological Trust	72
G2758_73	Room 18	View of window in room 18	B&B Bedroom (18)	NE	1m	Bethan Jones	14/12/22	Gwynedd Archaeological Trust	73
G2758_74	Room 18	View of sink and entrance into room 18	B&B Bedroom (18)	SE	1m	Bethan Jones	14/12/22	Gwynedd Archaeological Trust	74
G2758_75	Room 19	View of bathroom, used for guests	B&B Bedroom (19)	SE	1m	Bethan Jones	14/12/22	Gwynedd Archaeological Trust	75
G2758_76	Room 19	View of bathroom - room 19, used for guests	B&B Bedroom (19)	SW	1m	Bethan Jones	14/12/22	Gwynedd Archaeological Trust	76
G2758_77	Room 19	View of entrance into bathroom 19	B&B Bedroom (19)	NW	1m	Bethan Jones	14/12/22	Gwynedd Archaeological Trust	77
G2758_78	Room 20	View of hall into managers flat	Manager flat (20)	S	1m	Bethan Jones	14/12/22	Gwynedd Archaeological Trust	78
G2758_79	Room 20	View of entrance into managers flat	Manager flat (20)	N	1m	Bethan Jones	14/12/22	Gwynedd Archaeological Trust	79
G2758_80	Room 21	View of kitchen/living area - kitchen fittings removed	Kitchen/Living (21)	NE	1m	Bethan Jones	14/12/22	Gwynedd Archaeological Trust	80

PHOTO RECORD NUMBER*	SITE SUB-DIVISION	DESCRIPTION*	CONTEXT NUMBER (S)	VIEW FROM	SCALE	CREATOR OF DIGITAL PHOTO*	DATE	ORIGINATING ORGANISATION	PLATE
G2758_81	Room 21	View of window in kitchen/living room	Kitchen/Living (21)	W	1m	Bethan Jones	14/12/22	Gwynedd Archaeological Trust	81
G2758_82	Room 22	View along hallway (22) in managers flat	Hall (22)	N	1m	Bethan Jones	14/12/22	Gwynedd Archaeological Trust	82
G2758_83	Room 22	View of exit to roofspace from hall (22)	Hall (22)	E	1m	Bethan Jones	14/12/22	Gwynedd Archaeological Trust	83
G2758_84	Room 22	View of built-in storage cupboard in hall (22)	Hall (22)	NE	1m	Bethan Jones	14/12/22	Gwynedd Archaeological Trust	84
G2758_85	Room 23	View into bedroom (23)	Bedroom (23)	NW	1m	Bethan Jones	14/12/22	Gwynedd Archaeological Trust	85
G2758_86	Room 23	View of entrance into bedroom (23)	Bedroom (23)	SE	1m	Bethan Jones	14/12/22	Gwynedd Archaeological Trust	86
G2758_87	Room 23	View of window in bedroom (23)	Bedroom (23)	W	1m	Bethan Jones	14/12/22	Gwynedd Archaeological Trust	87
G2758_88	Room 24	View of bedroom (24)	Bedroom (24)	SW	1m	Bethan Jones	14/12/22	Gwynedd Archaeological Trust	88
G2758_89	Room 24	View of bedroom (24)	Bedroom (24)	SE	1m	Bethan Jones	14/12/22	Gwynedd Archaeological Trust	89
G2758_90	Room 24	View of bedroom (24)	Bedroom (24)	NW	1m	Bethan Jones	14/12/22	Gwynedd Archaeological Trust	90

PHOTO RECORD NUMBER*	SITE SUB- DIVISION	DESCRIPTION*	CONTEXT NUMBER (S)	VIEW FROM	SCALE	CREATOR OF DIGITAL PHOTO*	DATE	ORIGINATING ORGANISATION	PLATE
G2758_91	Room 24	View of bedroom (24) - showing entrance into room	Bedroom (24)	NE	1m	Bethan Jones	14/12/22	Gwynedd Archaeological Trust	91
G2758_92	Room 24	View of window in bedroom (24)	Bedroom (24)	W	1m	Bethan Jones	14/12/22	Gwynedd Archaeological Trust	92
G2758_93	Room 25	View of bathroom in managers flat -sloping roof	Bathroom (25)	SE	1m	Bethan Jones	14/12/22	Gwynedd Archaeological Trust	93
G2758_94	Room 25	View of bathroom from the entrance into room	Bathroom (25)	S	1m	Bethan Jones	14/12/22	Gwynedd Archaeological Trust	94

APPENDIX III

Gwynedd Archaeological Trust Selection Strategy

G2758_Crown_Hotel_Bodedern

25/11/2022 v1.0

Selection Strategy

Project Information

Project Management

Project Manager	John Roberts john.roberts@heneb.co.uk	
Archaeological Archive Manager	John Roberts john.roberts@heneb.co.uk	
Organisation	Gwynedd Archaeological Trust	
Stakeholders		Date Contacted
Collecting Institution(s)	GAT Historic Environment Record	25/11/2022
	RCAHMW	On completion of Project Archive
Project Assurance	Tom Fildes, Gwynedd Archaeological Planning Service	15/11/2022
Landowner / Developer	<i>SBJJ Group</i>	n/a

Resources

Resources required Describe the resources required to implement this Selection Strategy, particularly if unusual resources are required.	No unusual resources required outside of GAT normal operating equipment and personnel.
--	--

Context

The full aims and objectives of this project are detailed in the project specific WSI.

Gwynedd Archaeological Trust (GAT) has been commissioned by *SBJJ Group* to undertake archaeological mitigation prior to alterations and extensions to the existing Crown Hotel public house together with creating three residential apartments at Bodedern, Ynys Môn, LL65 3TU (NGR SH33398043 cf. WSI Figure 01). The public house is a slate-roofed detached two storey structure as detailed on *Curvasure Drawing No. 21137/03* (WSI Figure 02) and *BR Architecture Drawing Nos. BR:CROWN:SU01* and *BR:CROWN:SU02* (WSI Figure 03). The development is being undertaken as part of planning application

FPL/2022/50 and Condition 7. The archaeological mitigation will be undertaken in accordance with these requirements and will be commensurate to a Photographic Survey as defined in *Understanding Historic Buildings: A guide to good recording practice* (Historic England, 2016). A Photographic Survey provides a very full visual record, but without a written or drawn survey at a comparable level of detail. The photographic survey will be undertaken in November 2022.

Gwynedd Archaeological Trust. 2022. Crown Hotel, Bodedern.

Written Scheme of Investigation for Archaeological Mitigation: Photographic Survey. Project (G2758).

1 – Digital Data

Stakeholders

John Roberts (GAT Principal Archaeologist)

Selection

All digital data will be collected, stored and selected in lines with the Gwynedd Archaeological Trust (GAT) Data Management Plan located on GAT's servers (available on request).

Following the completion of the fieldwork, a working project archive will be created based on following task list;

1. Pro-formas: all cross referenced and complete;
2. Photographic Metadata: completed in *Microsoft Access* and cross-referenced with all pro-formas;

All relevant site archive data will be added to a digital project register specific to this project, which will be prepared in *Microsoft Excel*.

This data will be used as the basis for the physical and digital dataset archives. Information from these will be used to compile the project report. The physical archive will be stored in a designated project folder and the location confirmed in the Trust project database; the digital dataset will be stored on a dedicated Trust server, with the location confirmed in the Trust project database via a specific hyperlink. External datasets for the HER and RCAHMW are as defined in the dissemination strategy below. De-selected digital data will be confirmed in an updated digital management plan appended to the final report

De-Selected Digital Data

It is envisaged that the de-selected material will be retained on the GAT servers for 2 years following the completion of the project at which point they will be reviewed and deleted as necessary in line with the GAT DMP.

2 – Documents

Stakeholders

John Roberts – Principal Archaeologist, Gwynedd Archaeological Trust;
Sean Derby – Historic Environment Record, Gwynedd Archaeological Trust;
Gareth Edwards, *Head of Knowledge and Understanding, RCAHMW*

Selection

- A digital report will be provided to the regional Historic Environment Record; this will be submitted within six months of project completion (final report only), along with a digital dataset comprising an Event PRN summary. The report and dataset will be submitted in accordance with the required standards set out in *Guidance for the Submission of Data to the Welsh Historic Environment Records (HERs)* (Version 1.1); and
- A digital report and digital archive dataset will be provided to Royal Commission on Ancient and Historic Monuments, Wales (final report only), in accordance with the *RCAHMW Guidelines for Digital Archives Version 1*. The dataset will be prepared in the format required by RCAHMW and will include:
 - Photographic metadata (Microsoft Access);
 - Photographic archive (TIFF format);
 - Project Information form (Excel);
 - File Information form (Excel) – Microsoft Word report text final;
 - File Information form (Excel) – Photographic metadata (general);
 - File Information form (Excel) – Adobe PDF report final; and
 - File Information form (Excel) - Photographic metadata (detail).

De-Selected Documents

It is envisaged that the material de-selected from inclusion in the preserved archive will be duplicates or reproductions created during the analysis phase of the project. De-selected material will therefore either be retained to supplement GAT's research files or recycled.



Gwynedd Archaeological Trust
Ymddiriedolaeth Archaeolegol Gwynedd

Craig Beuno, Ffordd y Garth, Bangor, Gwynedd. LL57 2RT
Ffon: 01248 352535. Ffacs: 01248 370925. email: gat@heneb.co.uk

