

Assessment of Welsh Raised Bogs LIFE Project works and their proximity to known historic features.

This document is a brief assessment undertaken by Jake White, WRB LIFE Project Officer, to understand whether the planned WRB LIFE Project actions may impact known historic features. This investigation has used Arc GIS desktop application, with the known historic feature layer, overlain with planned WRB LIFE Works. Particular attention is paid to those actions which involve ground works.

Cors Caron SAC



Features in proximity to WRB LIFE planned works

Low elevation contour bunding planned throughout the WRB LIFE Project is due to impact the following features.

PRN	Trust	Community	Unitary Authority	NGR	Site Type	Status	Link to feature profile
114048	Dyfed	Ystrad Fflur	Ceredigion	SN696640	N/A - Landscape	N/a	CLICK HERE
8420	Dyfed	Ystrad Fflur	Ceredigion	SN6800063000	N/a – Peat Bog	N/a	CLICK HERE

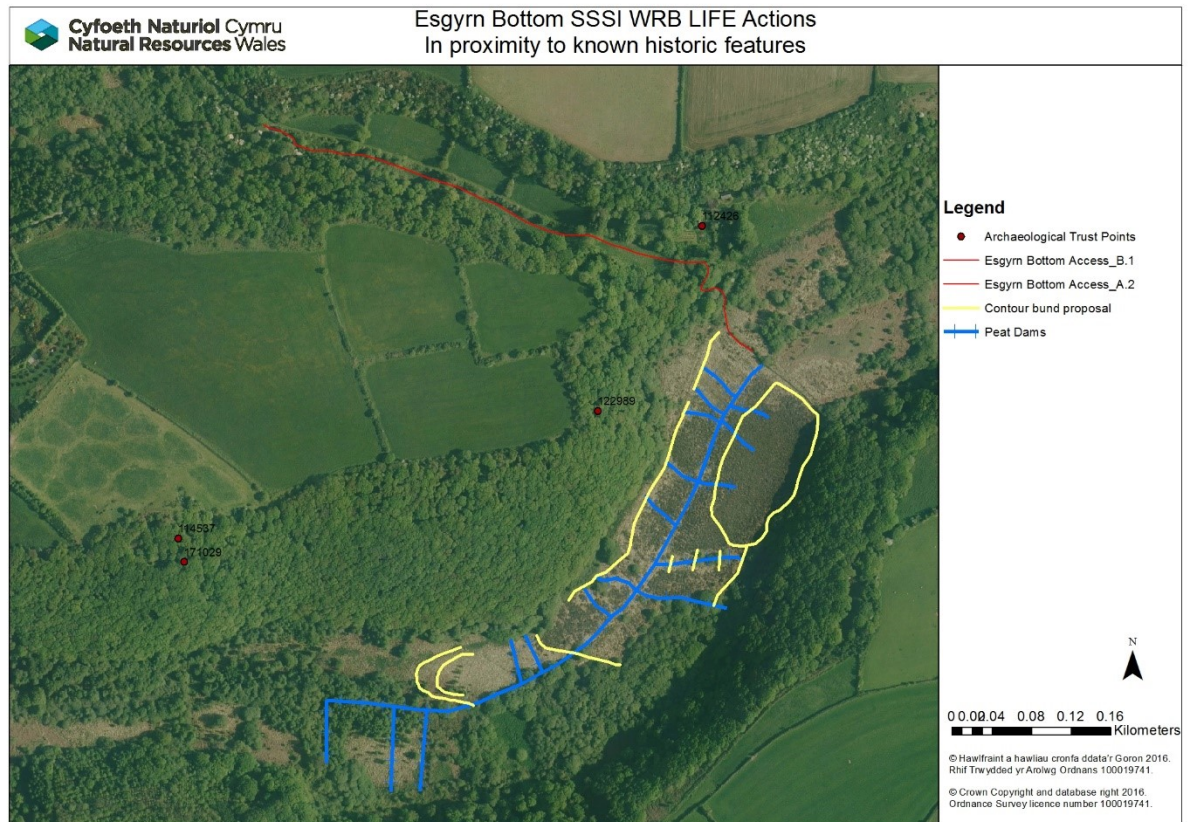
Impact Assessment

Feature 114048 is a landscape scale feature, rather than a specific historic feature, importance for this historic landscape feature is to maintain the peat's record of vegetative cover and climate change. This has been covered already within the Habitats Regulations Assessment, under the SSSI feature table "Raised Mire Stratigraphy" – [CLICK HERE FOR DOCUMENT](#).

Feature 8420 is a habitat feature recognising the peat bog, rather than a specific historic feature. A full assessment of WRB LIFE action impacts to this habitat has been made through the Habitats Regulations Assessment – [CLICK HERE FOR DOCUMENT](#).

Risk to historic features is though to be low, the WRB LIFE Works aims at improving the wildlife, habitats and carbon capture ability of the raised bogs at Cors Caron SAC. Also accurate locations of ground penetrating interventions will be recorded so prevent confusion with any future paleo-ecological studies.

Esgyrn Bottom SSSI



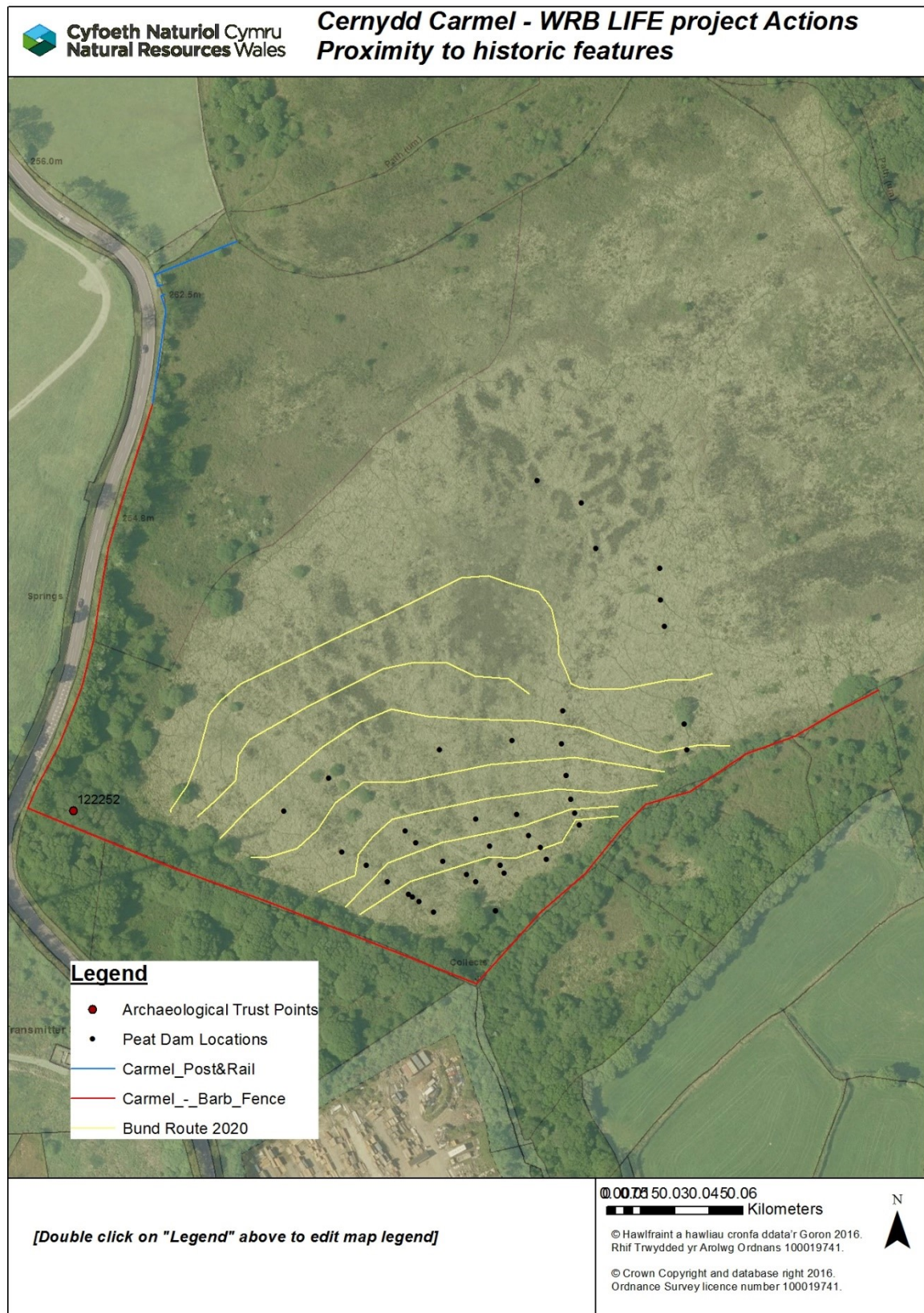
Features in proximity to WRB LIFE planned works

None

Impact Assessment

There are no historic features in close proximity to WRB LIFE Project actions, therefore risk to historic features is thought to be very low.

Cernydd Carmel



Features in proximity to WRB LIFE planned works

Fencing at Cernydd Carmel is in close proximity to the following historic features.

PRN	Trust	Community	Unitary Authority	NGR	Site Type	Status	Link to feature profile
122252	Dyfed	Llanfihangel Aberbythych	Carmarthenshire	SN57801541	Post - Medieval Mill	N/a	CLICK HERE

Impact Assessment

Feature 122252 is recorded as a post medieval mill. However in 2012 Cadw mills project investigated the feature and could not find any evidence for its existence. Suggesting that reference to its location made in 1983 has recorded its location wrong as the record from this time is “ The mill is empty and rapidly falling into a state of disrepair. We were unable to find out who the owners were and were not able to get any closer than the road. Sept 1983” . Suggesting a substantial structure that there should be evidence of. As yet LIFE staff have not found any evidence of such a structure. However, when planning fence line due care will be made to ensure that structures/walls are not moved or disturbed.

Site visit to ascertain presence of feature 122252 – Post -medieval mill.

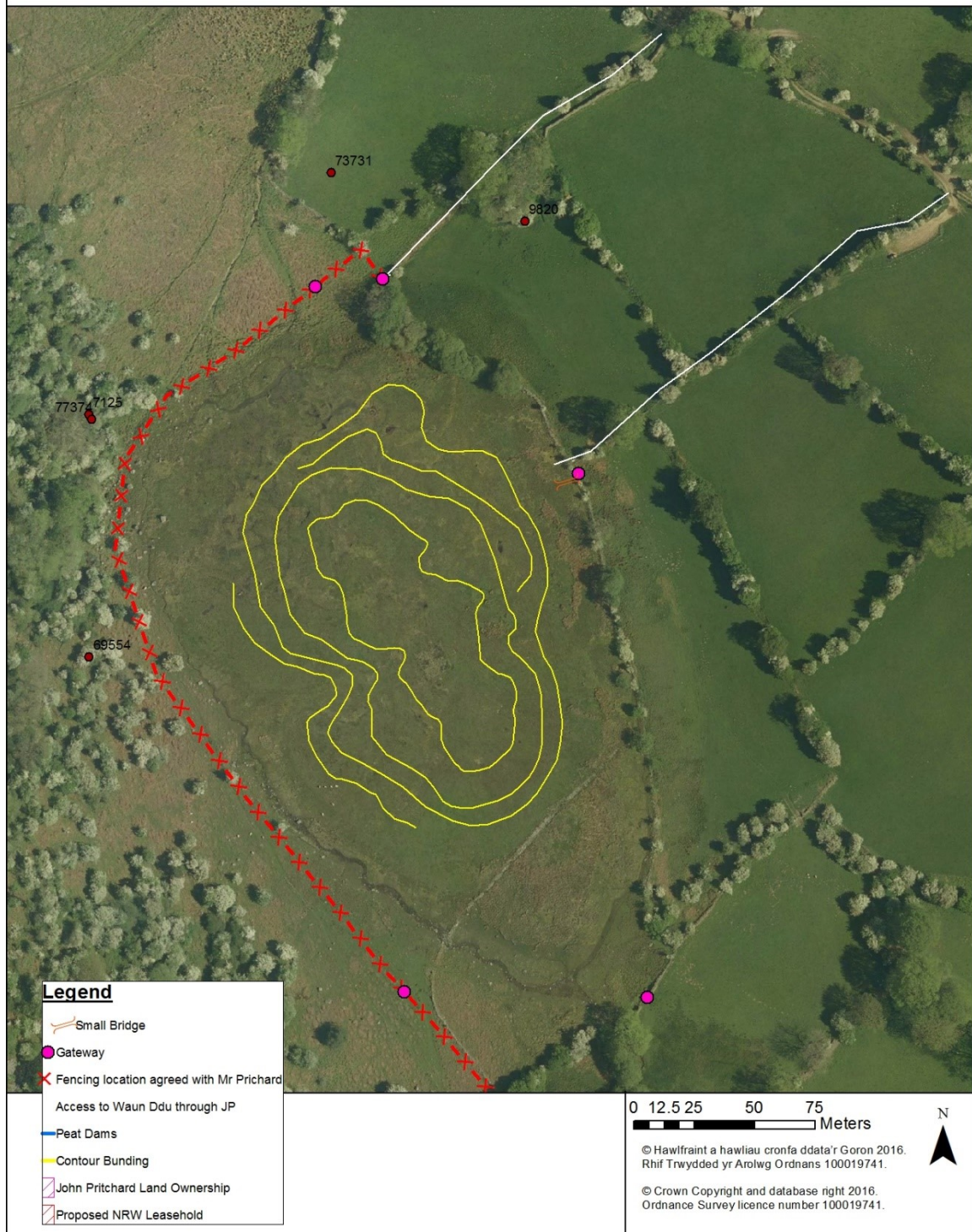
On Tuesday 18th May, Jake White (WRB LIFE Project Officer) attended site at Cernydd Carmel SAC to assess the presence of historic feature 122252. As mentioned above, an investigation undertaken by Cadw in 2012 could not find any evidence of the mill first recorded in 1983. Arc GIS online was used to accurately find the location of the archaeology layer feature point, and then a walkover was undertaken of a 20m radius around the location.

The site is very wooded, but observations of some linear features were made, what looks like some stone walls – now degraded to about 0.8m above ground level – with loose stones found at the base. Whether this was a mill or simply an old animal enclosure is unclear. However, efforts will be made to avoid these structures, and keep all works at least 10m from them. NRW staff can also mark out the walls on the ground using bamboo canes and red tape throughout the duration of the works.

Risk to historic features is though to be low.



Waun-Ddu WRB LIFE Project Actions Proximity to known historic features



Features in proximity to WRB LIFE planned works

Fencing at Cernydd Carmel is in close proximity to the following historic features.

PRN	Trust	Community	Unitary Authority	NGR	Site Type	Status	Link to feature profile
58804	Clwyd Powys	Llangattock	Powys	SO185165	MULTIPERIOD ENVIRONMENTAL DEPOSIT	N/a	CLICK HERE
5314	Clwyd Powys	Llangattock	Powys	SO185166	POST MEDIEVAL LIME KILN	N/a	CLICK HERE
125405	Clwyd Powys	Llangattock	Powys	SO1850116598	POST MEDIEVAL BUILDING	N/a	CLICK HERE

Impact Assessment

Feature 58804 is recorded as Multiperiod Environmental Deposits – this is due to its importance as an historic pollen sampling site for understanding historic vegetative and climate change. WRB LIFE works are going to be disturbing and inverting the upper 1-2m layer of peat along c0.80m wide peat bunds. These works are designed to restore the condition of the SAC for the long term, and the large majority of the pollen record retained within Waun-Du will remain intact.

Feature 5312 is recorded as a post medieval lime kiln and is visible as a stone walled structure, it is located 20m away from the proposed fence line. The installation of the fence can easily avoid any damage to the feature – however the feature will be included within the contractor information pack, as well as being identified on the pre-commencement meeting, and temporarily taped off to make operatives aware.

Feature 125405 is recorded as a post medieval building, and is located in close proximity to feature 5312, therefore the same mitigation measures will be taken to ensure no damage comes to the feature during the installation of WRB LIFE actions.

Risk to historic features is low.

Site visit to investigate historic features – 03.06.21

On 03.06.21 Jake White, Project Officer, visited Waun-Ddu to investigate the historic features 5314 (Post Medieval Lime Kiln) and 125405 (Post medieval building). Both features were observed. Due to heavy grazing in the area preventing scrub colonisation they were both easy to find. The proposed fence line that is due to be installed within 20m of the lime kiln will not impact the feature directly. Also there is already an existing well used path used by walkers and livestock next to the lime kiln, so the fence wont be introducing any new pathways.

There are trees growing out of both features, so with advice from the local archaeological trust, there is the opportunity to undertake some restoration work of these historic features through scrub removal.



Feature 5314 – Post-Medieval Lime Kiln



Feature 125405 – Post-Medieval Building