

Alice Pyper

From:

Sent:

To:

Subject:

Alice Pyper <A.Pyper@DYFEDARCHAEOLOGY.ORG.UK>

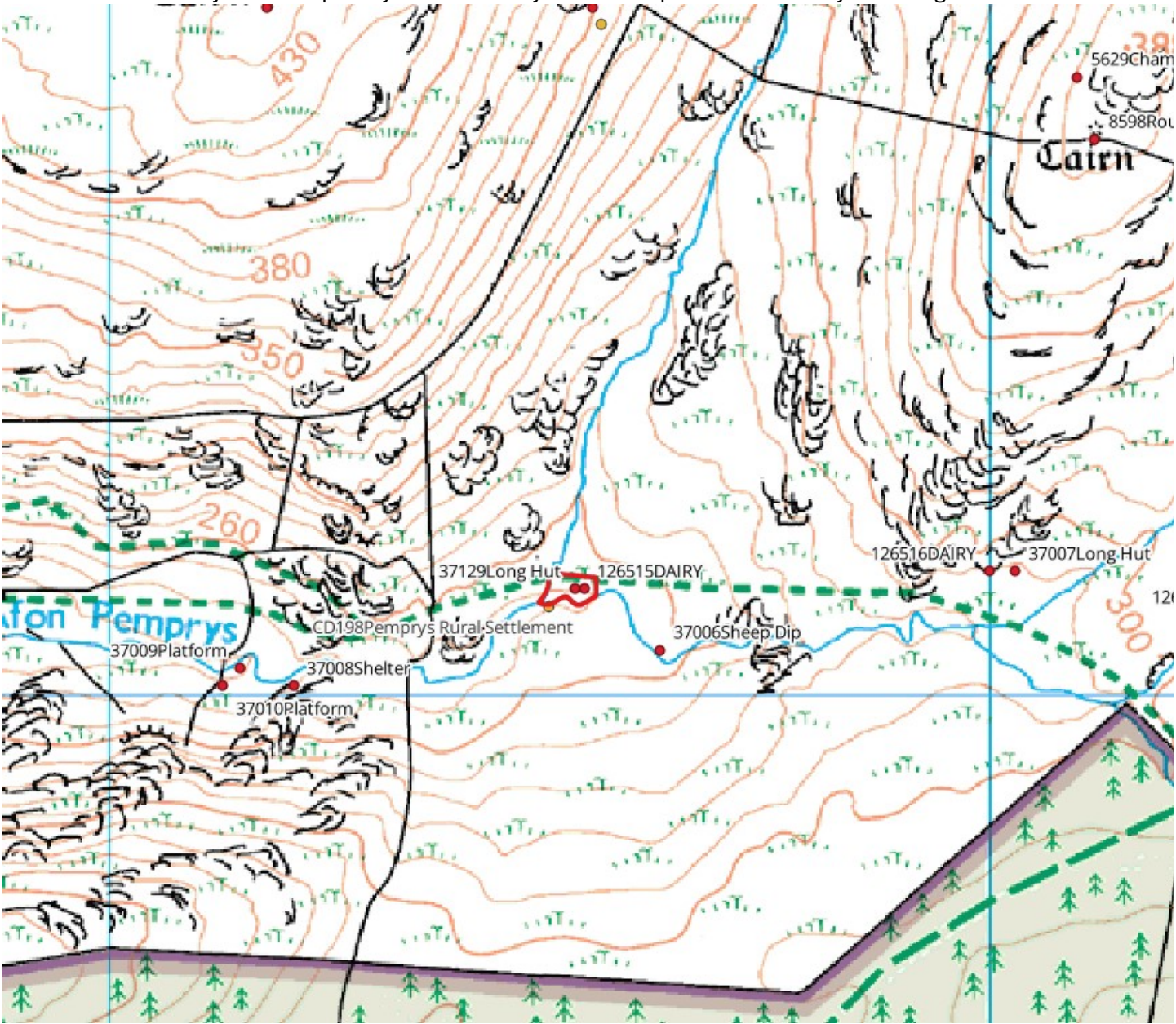
04 June 2024 13:45

Ian.Halfpenney@gov.wales

Re: Pemprys farm ancient sites

Hi Ian,

I've had a look at the HER and we have the following sites recorded which appear to be related to the Cadw funded PFRS and DRS surveys and a report by J Wiles : Dairy Stores in Upland Genau'r-Glyn Ceredigion.



PRN	Site Name	Summary	Description	url
-----	-----------	---------	-------------	-----

27088		A building of unknown function is reported to be located at this point. Not shown on 1964 6" Ordnance Survey map. Streamside location and upland context suggest that a shepherd's hut or similar type settlement may have existed here. Needs evaluation. RPS October 2001; A small long hut or shelter. Defined only by a rectilinear hollow, with low grass wall bases on the NE & SW sides. The NW end backs against a rock outcrop. The SE end is open, with two or three small stones on the surface. It looks like a C18th/C19th Shepherds Shelter. RPS October 2002		<a href="https://archwilio.org.uk/arch/query/page.php?watprn=DAT27088">https://archwilio.org.uk/arch/query/page.php?watprn=DAT27088</a>
5629	Bwlch Corog	No trace of a chambered tomb in the area, although there is a round barrow cairn, PRN 8598, c.70m to the SSE. NC 2006.		<a href="https://archwilio.org.uk/arch/query/page.php?watprn=DAT5629">https://archwilio.org.uk/arch/query/page.php?watprn=DAT5629</a>
8598	Bwlch Corog	A small round cairn, c.7m in diameter, seemingly undisturbed and surmounted by a small walkers' cairn, which increases the height of the monument to 0.8m. NC 2006.		<a href="https://archwilio.org.uk/arch/query/page.php?watprn=DAT8598">https://archwilio.org.uk/arch/query/page.php?watprn=DAT8598</a>
48413	Carn Bwlch Corog	A possible round barrow recorded on an Estate Map at SN734945 and distinct from another round barrow, Carnedd, recorded at SN731946 on the same map (PRN 8598). No trace of any barrow survives today. NC 2006.		<a href="https://archwilio.org.uk/arch/query/page.php?watprn=DAT48413">https://archwilio.org.uk/arch/query/page.php?watprn=DAT48413</a>
37006	Cwm Pemprys	A small drystone fold and sheep wash. RPS September 1998		<a href="https://archwilio.org.uk/arch/query/page.php?watprn=DAT37006">https://archwilio.org.uk/arch/query/page.php?watprn=DAT37006</a>
37007	Cwm Pemprys	Long hut, sheltered from prevailing winds by a rocky outcrop. Ruined structure on a probable platform. Long hut measures 7m NS x 3.25 EW. The northernmost 5m is a rough stone structure, with some large stones blocks incorporated, as much as 1m in diameter. A similar rough line of uncoursed stone forms N end also. Some stone collapsed into interior. The N end appears to be cut into the slope, the S end is just a positive platform, no walling and apparently open-ended. Details not clear at this end. Internally, it is quite level. Site grass covered. RPS September 1998.		<a href="https://archwilio.org.uk/arch/query/page.php?watprn=DAT37007">https://archwilio.org.uk/arch/query/page.php?watprn=DAT37007</a>
37008	Cwm Pemprys	At the terminal of an old boundary bank; bank runs off an ovoid structure defined by three large stone boulders, possibly a shelter. At edge of broad terrace. RPS September 1998.		<a href="https://archwilio.org.uk/arch/query/page.php?watprn=DAT37008">https://archwilio.org.uk/arch/query/page.php?watprn=DAT37008</a>
37010	Cwm Pemprys	30m to the N of platform described in 37009, upslope, there is a possible platform parallel to the contour. This is 4m E-W x 3.5 N-S. Possibly natural. Bracken obscured much of area at time of visit. RPS September 1998.		<a href="https://archwilio.org.uk/arch/query/page.php?watprn=DAT37010">https://archwilio.org.uk/arch/query/page.php?watprn=DAT37010</a>

37009	Cwm Pemprys	On terrace between stream and foot of slope. Boundary described in PRN 37008 runs down this terrace, to the stream edge and stops. S of the boundary is an apparent platform 10m E-W x 5m N-S. At its E end is a U-shaped bank, which defines the E half of the site, possibly a drainage hood which has eroded to 0.3m high x 1.5m wide. The W end certainly does have a positive platform. There is a E-W slope along the platform, dipping down towards the stream, which passes about 5m to west. Where the boundary bank passes N of the platform there is an area of scattered stones, unfortunately under thick bracken at the time, where it is possible an associated enclosure or fold may have been, max.5m square. RPS September 1998.		<a href="https://archwilio.org.uk/arch/query/page.php?watprn=DAT37009">https://archwilio.org.uk/arch/query/page.php?watprn=DAT37009</a>
126515	Pemprys	Corridor style dairy store recorded at this site of 10.5x1.5-2m dimensions	Most dairy stores present as earthworks, embanked hollows, or armchair-like features, cut into rising ground and framed by lateral banks. These would have been of turf or earth and timber construction. A few were substantial stone-walled structures, whilst some appear to have drystone wall-bases and one or two uncertain examples are defined by rubble banks. The basic form can be characterised as a chamber, typically part-sunken, sometimes having a narrower entrance. F.S based on J.Wiles 2021	<a href="https://archwilio.org.uk/arch/query/page.php?watprn=DAT126515">https://archwilio.org.uk/arch/query/page.php?watprn=DAT126515</a>
37129	Pemprys	Below Penprys farm. Large rectangular earth & stone structure, 16m E-W x 6m N-S. No visible internal features or entrances. Probably been disturbed by agricultural activity. Grass covered, some reeds. 10m S. of stream, on broad terrace which has a bank defining S side at the foot of a slope and a hint of a boundary to the E. The next terrace to E seems to have some clearance cairns. At E end of longhut, it is cut into slope, and there is a hint of a positive platform at W end, extending 6m beyond structure. RPS September 1998.		<a href="https://archwilio.org.uk/arch/query/page.php?watprn=DAT37129">https://archwilio.org.uk/arch/query/page.php?watprn=DAT37129</a>

126516	Pemprys, Nant Esgairmaen	Chamber style dairy store recorded at this site of 4x2.5m dimensions	Most dairy stores present as earthworks, embanked hollows, or armchair-like features, cut into rising ground and framed by lateral banks. These would have been of turf or earth and timber construction. A few were substantial stone-walled structures, whilst some appear to have drystone wall-bases and one or two uncertain examples are defined by rubble banks. The basic form can be characterised as a chamber, typically part-sunken, sometimes having a narrower entrance. Chamber style dairy stores are typically rectilinear, stone-walled and sometimes include diminutive buildings and smaller structures. They can sometimes taper in plan. F.S based on J.Wiles 2021	<a href="https://archwilio.org.uk/arch/query/page.php?watprn=DAT126516">https://archwilio.org.uk/arch/query/page.php?watprn=DAT126516</a>
126518	Waunbwl Sheepwalk	Armchair style dairy store recorded at this site of 4.3x3.15m dimensions	Most dairy stores present as earthworks, embanked hollows, or armchair-like features, cut into rising ground and framed by lateral banks. These would have been of turf or earth and timber construction. A few were substantial stone-walled structures, whilst some appear to have drystone wall-bases and one or two uncertain examples are defined by rubble banks. The basic form can be characterised as a chamber, typically part-sunken, sometimes having a narrower entrance. Armchair style dairy stores have open-ended rectangular chambers or stances lacking necks, of earthwork or dry-stone construction. F.S based on J.Wiles 2021	<a href="https://archwilio.org.uk/arch/query/page.php?watprn=DAT126518">https://archwilio.org.uk/arch/query/page.php?watprn=DAT126518</a>

Let me know if you need anything further,  
Best wishes

Alice

---

**From:** Ian.Halfpenney@gov.wales <Ian.Halfpenney@gov.wales>  
**Sent:** 31 May 2024 9:02 AM  
**To:** abi.mccullough@cpat.org.uk <abi.mccullough@cpat.org.uk>; Zoe Arthurs <zoe.arthurs@cpat.org.uk>; Alice Pyper <A.Pyper@DYFEDARCHAEOLOGY.ORG.UK>  
**Subject:** FW: Pemprys farm ancient sites

Alice

Not sure but think this may be Dyfed area.

Is there any chance you can do an HER search for me and see what if anything is in this general area?

May need a visit up there as well – but let's see what's on the HER first.

Thanks

Ian

---

**From:** Katy Harris <katy.harris@coetiranian.org>  
**Sent:** Wednesday, March 27, 2024 12:48 PM  
**To:** Halfpenney, Ian (ETC - CST - Cadw - Historic Environment) <Ian.Halfpenney@gov.wales>  
**Cc:** wendy.joss13@btinternet.com  
**Subject:** RE: Pemprys farm ancient sites

Hi Ian, thanks that's great. Map attached (fairly basic one but it shows you where in yellow). Does it give you enough info for now?

Katy

**Katy Harris**

**Cyfarwyddwr Prosiect / Project Director**

**07714335145** [www.coetiranian.org](http://www.coetiranian.org)

*Please note I usually work 9am until 3pm*

---

**From:** [lan.halfpenney@gov.wales](mailto:lan.halfpenney@gov.wales) <[lan.halfpenney@gov.wales](mailto:lan.halfpenney@gov.wales)>

**Sent:** Wednesday, March 27, 2024 11:01 AM

**To:** Katy Harris <[katy.harris@coetiranian.org](mailto:katy.harris@coetiranian.org)>

**Cc:** [wendy.joss13@btinternet.com](mailto:wendy.joss13@btinternet.com)

**Subject:** RE: Pemprys farm ancient sites

Katy

Thank for contacting me – yes I'd be interested in coming to have a look.

Have you got a map of the area you're interested in? If you can send me a map I can get someone to take a look at the historic records database to see what is known/recorded in the area.

Ian

---

**From:** Ian <[ian.halfpenney@btinternet.com](mailto:ian.halfpenney@btinternet.com)>

**Sent:** Wednesday, March 27, 2024 10:41 AM

**To:** Halfpenney, Ian (ETC - CST - Cadw - Historic Environment) <[lan.halfpenney@gov.wales](mailto:lan.halfpenney@gov.wales)>

**Subject:** Fwd: Pemprys farm ancient sites

Sent from my iPhone

Begin forwarded message:

**From:** Katy Harris <[katy.harris@coetiranian.org](mailto:katy.harris@coetiranian.org)>

**Date:** 12 March 2024 at 13:39:26 GMT

**To:** [ian.halfpenney@btinternet.com](mailto:ian.halfpenney@btinternet.com)

**Cc:** "Wendy Joss ([wendy.joss13@btinternet.com](mailto:wendy.joss13@btinternet.com))" <[wendy.joss13@btinternet.com](mailto:wendy.joss13@btinternet.com)>

**Subject:** Pemprys farm ancient sites

Hi Ian,

Got your email from Wendy, she mentioned you might be interested to come up to Pemprys Farm (near Cwm Einion) with us to look at some potential archaeological sites of interest?



We are working with Owen Jenkins, our neighbour, who owns the land, and he is interested to find out more about some sites on his farm. They have as far as we know not been investigated; we think there's a stone circle, plus some longhouse ruins that may date back to medieval times. We'd love to involve someone with the right knowledge and background to establish whether further investigation of the sites would be worthwhile.

Best wishes,

Katy

**Katy Harris**

**Cyfarwyddwr Prosiect / Project Director**

07714 335145

*Please note I usually work 9am until 3pm*

[www.coetiranian.org](http://www.coetiranian.org)

[www.cambrianwildwood.org](http://www.cambrianwildwood.org)

[Facebook](#)

[Twitter](#)

[Instagram](#)



Mae Coetir Anian yn elusen wedi'i chofrestru yng Nghymru a Lloegr Rhif 1158185

Coetir Anian is a Charity Registered in England and Wales Number 1158185

Mae'r neges hon yn cynnwys gwybodaeth gyfrinachol ar gyfer y derbynnydd yn unig. Os nad chi yw'r derbynnydd cywir, ni ddylech rannu na chopio'r ebost hwn. Gofynnwn i chi ddileu'r neges a rhoi gwybod i Goetir Anian drwy ebost os derbynioch y neges hon drwy gamgymeriad. Ni ellir gwarantu bod e-byst yn glöedig nac yn ddi-wall oherwydd gall gwybodaeth gael ei cholli, ei newid, ei niweidio, ei difa, gall gyrraedd yn hwyr neu yn rhannol, neu gall gynnwys frysau. Oherwydd hyn nid yw Coetir Anian yn derbyn unrhyw ateboliaeth am wallau neu ddiffygion yng nghynnwys y neges hon, a grëwyd o gael ei danfon yn electronig. Os hoffech sicrwydd am yr uchod, gallwch ofyn am gopi caled.

This message contains confidential information and is intended for the recipient only. If you are not the recipient you should not disseminate, distribute or copy this e-mail. Please notify Coetir Anian immediately by e-mail if you have received this e-mail by mistake and delete this e-mail from your system. E-mail transmission cannot be guaranteed to be secure or error-free as information could be intercepted, corrupted, lost, destroyed, arrive late or incomplete, or contain viruses. Coetir Anian therefore does not accept liability for any errors or omissions in the contents of this message, which arise as a result of e-mail transmission. If verification is required please request a hard-copy version.

Sganiwyd y neges hon am bob feirws hysbys wrth iddi adael Llywodraeth Cymru. Mae Llywodraeth Cymru yn cymryd o ddifrif yr angen i ddiogelu eich data. Os cysylltwch â Llywodraeth Cymru, mae ein [hysbysiad preifatrwydd](#) yn esbonio sut rydym yn defnyddio eich gwybodaeth a sut rydym yn diogelu eich preifatrwydd. Rydym yn croesawu gohebiaeth yn Gymraeg. Byddwn yn anfon ateb yn Gymraeg i ohebiaeth a dderbynnir yn Gymraeg ac ni fydd gohebu yn Gymraeg yn arwain at oedi. ----- On leaving the Welsh Government this email was scanned for all known viruses. The Welsh Government takes the protection of your data seriously. If you contact the Welsh Government then our [Privacy Notice](#) explains how we use your information and the ways in which we protect your privacy. We welcome receiving correspondence in Welsh. Any correspondence received in Welsh will be answered in Welsh and corresponding in Welsh will not lead to a delay in responding.

Sganiwyd y neges hon am bob feirws hysbys wrth iddi adael Llywodraeth Cymru. Mae Llywodraeth Cymru yn cymryd o ddifrif yr angen i ddiogelu eich data. Os cysylltwch â Llywodraeth Cymru, mae ein [hysbysiad preifatrwydd](#) yn esbonio sut rydym yn defnyddio eich gwybodaeth a sut rydym yn diogelu eich preifatrwydd. Rydym yn croesawu gohebiaeth yn Gymraeg. Byddwn yn anfon ateb yn Gymraeg i ohebiaeth a dderbynnir yn Gymraeg ac ni fydd gohebu yn Gymraeg yn arwain at oedi. ----- On leaving the Welsh Government this email was scanned for all known viruses. The Welsh Government takes the protection of your data seriously. If you contact the Welsh Government then our [Privacy Notice](#) explains how we use your information and the ways in which we protect your privacy. We welcome receiving correspondence in Welsh. Any correspondence received in Welsh will be answered in Welsh and corresponding in Welsh will not lead to a delay in responding.

Flotek Group has scanned and approved this email for your delivery - please note all website links have been replaced with a secure link for your own safety and will be scanned again once clicked.