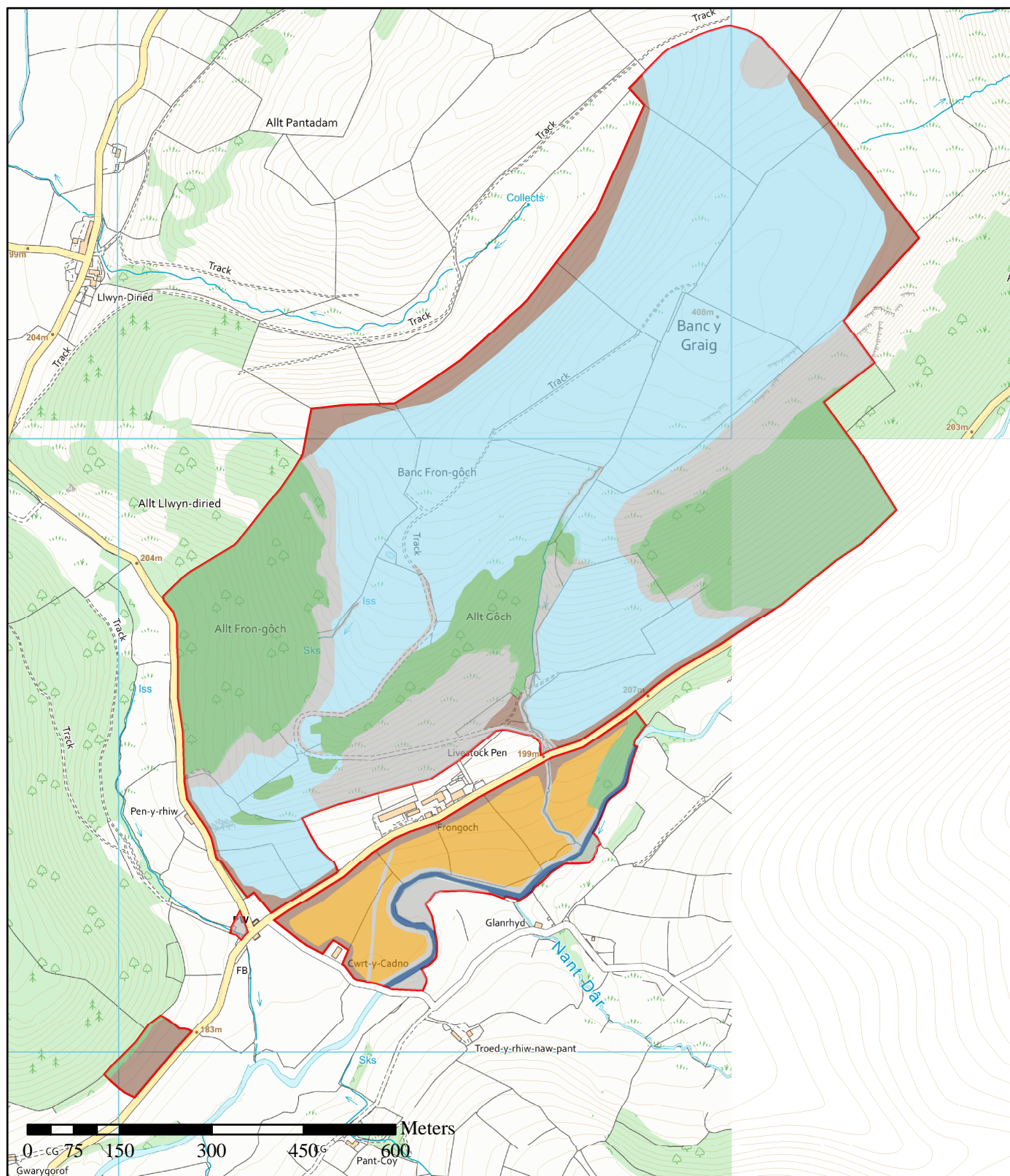


# Frongoch Planting Design UKFS



## Legend

<span style="display:inline-block; width:15px; height:15px; background-color:lightblue; border:1px solid black;"></span> Sitka Spruce 66%	<span style="display:inline-block; width:15px; height:15px; background-color:gray; border:1px solid black;"></span> Open ground 17%	<span style="display:inline-block; width:15px; height:15px; border:2px solid red;"></span> Legal Bdy
<span style="display:inline-block; width:15px; height:15px; background-color:orange; border:1px solid black;"></span> Douglas Fir 8%	<span style="display:inline-block; width:15px; height:15px; background-color:green; border:1px solid black;"></span> Existing Woodland	<span style="display:inline-block; width:15px; height:15px; border:1px solid green;"></span> Subcompartments
<span style="display:inline-block; width:15px; height:15px; background-color:brown; border:1px solid black;"></span> Mixed Broadleaves 9%	<span style="display:inline-block; width:15px; height:15px; background-color:blue; border:1px solid black;"></span> River	

Gross Area: 73.27 Ha  
 Nett Planting Area (excluding Open Ground): 60.64 Ha



Scale  
 1:9,000

29/06/2021



Church Bank  
 Llandovery  
 Carmarthenshire  
 SA20 0BA  
 Tel: 01550 721442  
 Fax: 01550 721446

© Crown copyright and database  
 rights 2021 Ordnance Survey  
 AL100018344

OS sheets: