

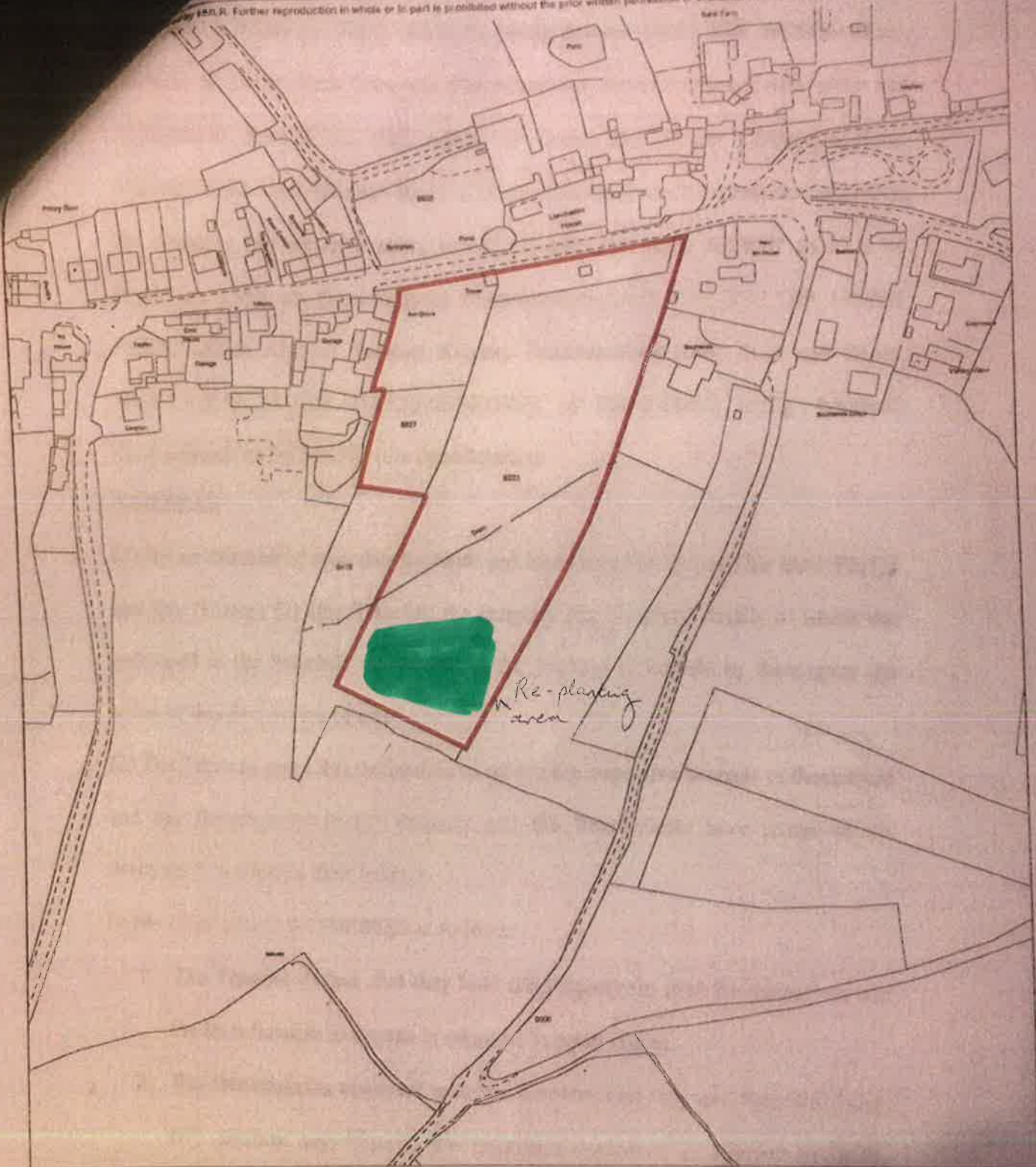
TITLE NUMBER  
**CYM207636**

PEMBROKESHIRE / SIR BENFRO

IN06173E

SCALE 1:2500 Reduced from 1:1250

Copyright © 2004. Further reproduction in whole or in part is prohibited without the prior written permission of Ordnance Survey. Licence Number OD 272728



This title plan shows the general position of the boundaries: it does not show the exact line of the boundaries. Measurements scaled from this plan may not match measurements between the same points on the ground. For more information see Land Registry Public Guide 7 - Title Plans.

This official copy shows the state of the title plan on 16 December 2004 at 17:25:43. It may be subject to distortions in scale. Under s 67 of the Land Registration Act 2002, this copy is admissible in evidence to the same extent as the original. Issued on 16 December 2004.

This title is dealt with by the District Land Registry for Wales.



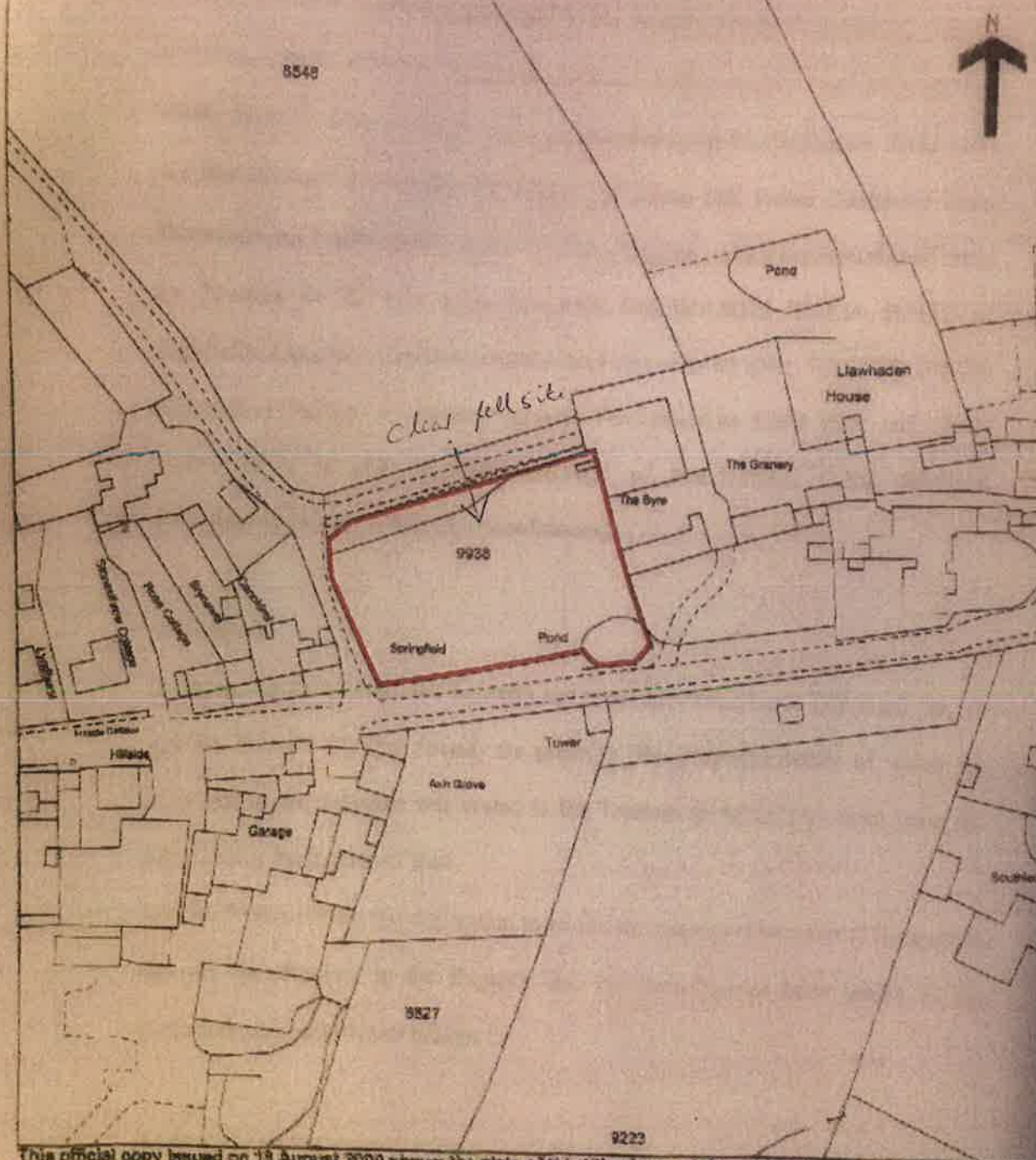


Land Registry  
Official copy of  
title plan

Title number CYM425428  
Ordnance Survey map reference SN06179E  
Scale 1:1250 enlarged from 1:2500  
Administrative area Pembrokeshire / Sir Benfro



© Crown Copyright. Produced by Land Registry. Reproduction in whole or in part is prohibited without the prior written permission of Ordnance Survey. Licence Number 100026918



This official copy issued on 18 August 2009 shows the state of this title plan on 8 August 2009 at 10:08:42. It is admissible in evidence to the same extent as the original (s.57 Land Registration Act 2002). This title plan shows the general position, not the exact line, of the boundaries. It may be subject to distortions in scale. Measurements scaled from this plan may not match measurements between the same points on the ground. See Land Registry Public Guide 18 - Title Plans and Boundaries. This title is dealt with by Land Registry, Wales Office.











