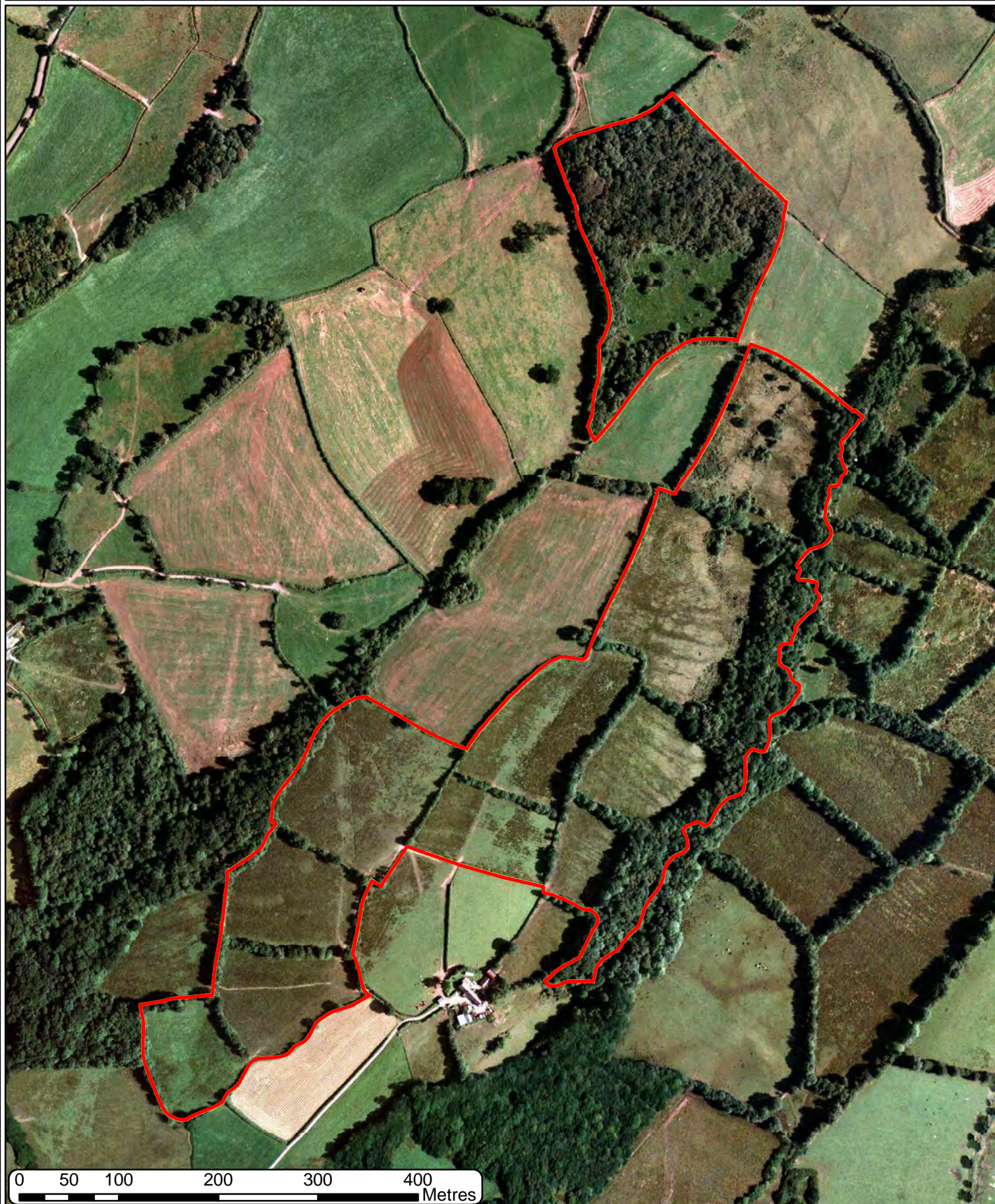


S001 2018 NANT-Y-MEILLION AERIAL PHOTOGRAPHY 2000-01





# S001 2018 NANT-Y-MEILLION AERIAL PHOTOGRAPHY 2006





# S001 2018 NANT-Y-MEILLION AERIAL PHOTOGRAPHY 2009-10





# S001 2018 NANT-Y-MEILLION AERIAL PHOTOGRAPHY 2013-14



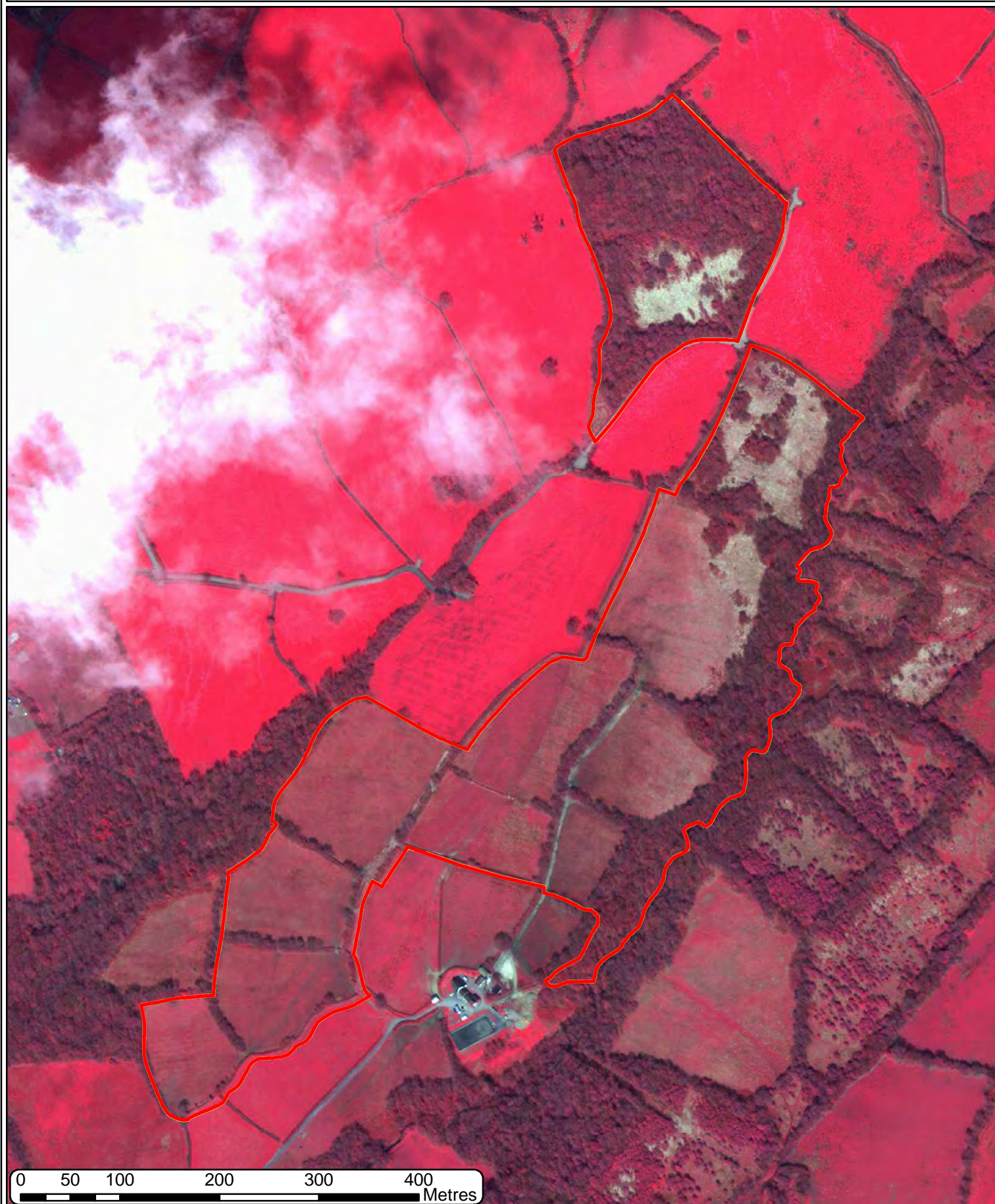


S001 2018 NANT-Y-MEILLION AERIAL PHOTOGRAPHY CIR 2014



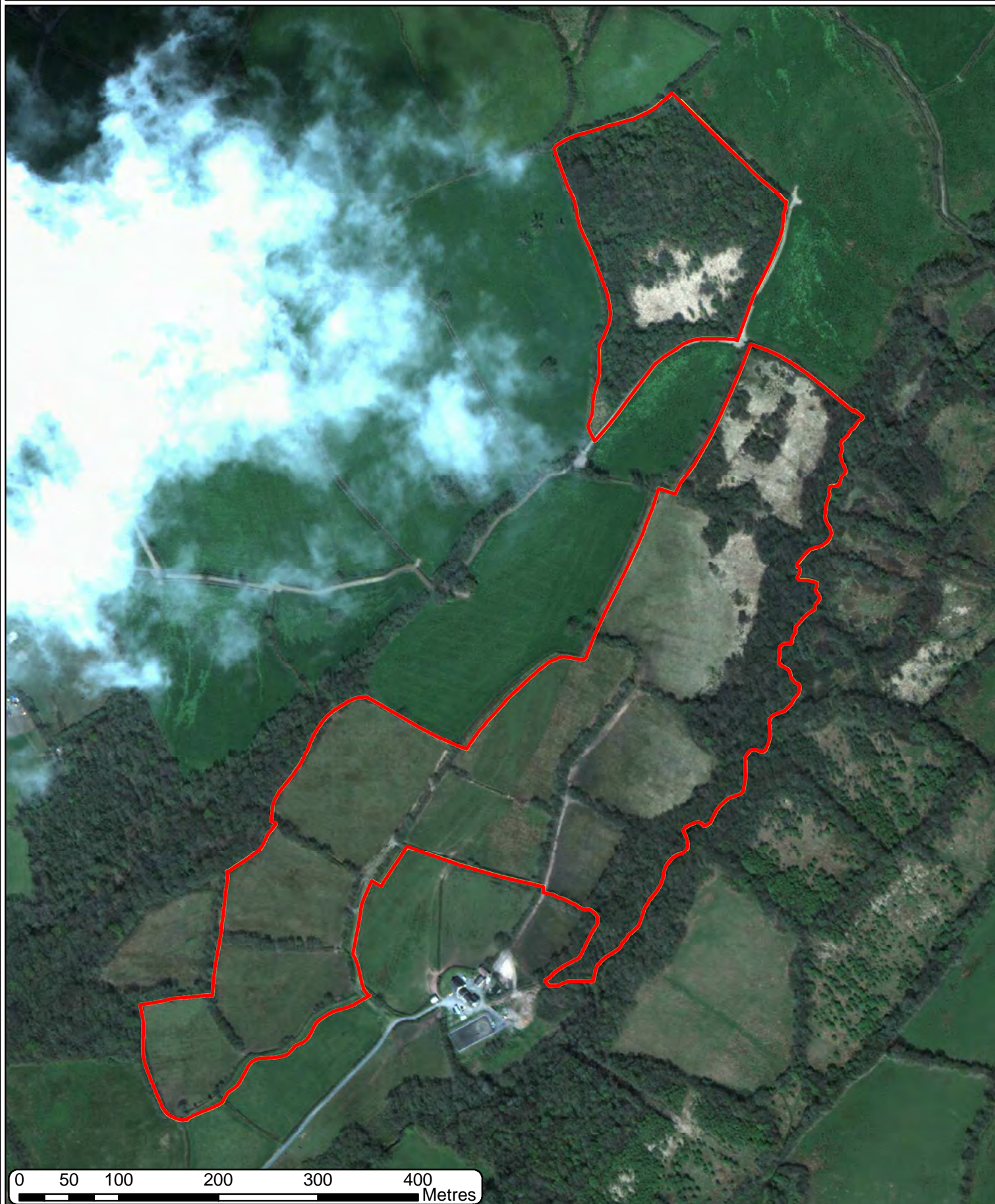


S001 2018 NANT-Y-MEILLION CwRS 2014 CIR



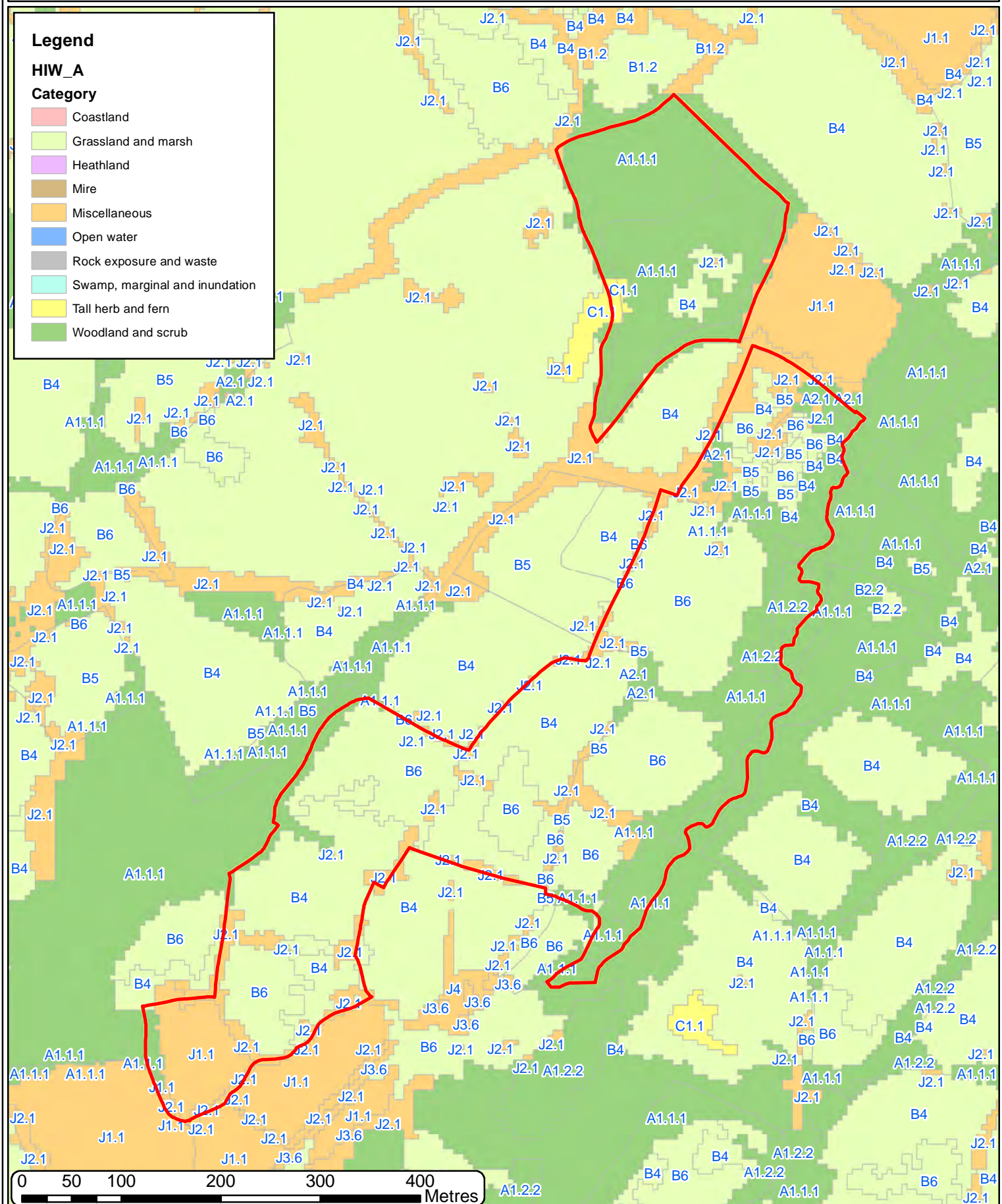


# S001 2018 NANT-Y-MEILLION CwRS 2014 Visual





# S001 2018 NANT-Y-MEILLION HABITAT INVENTORY OF WALES



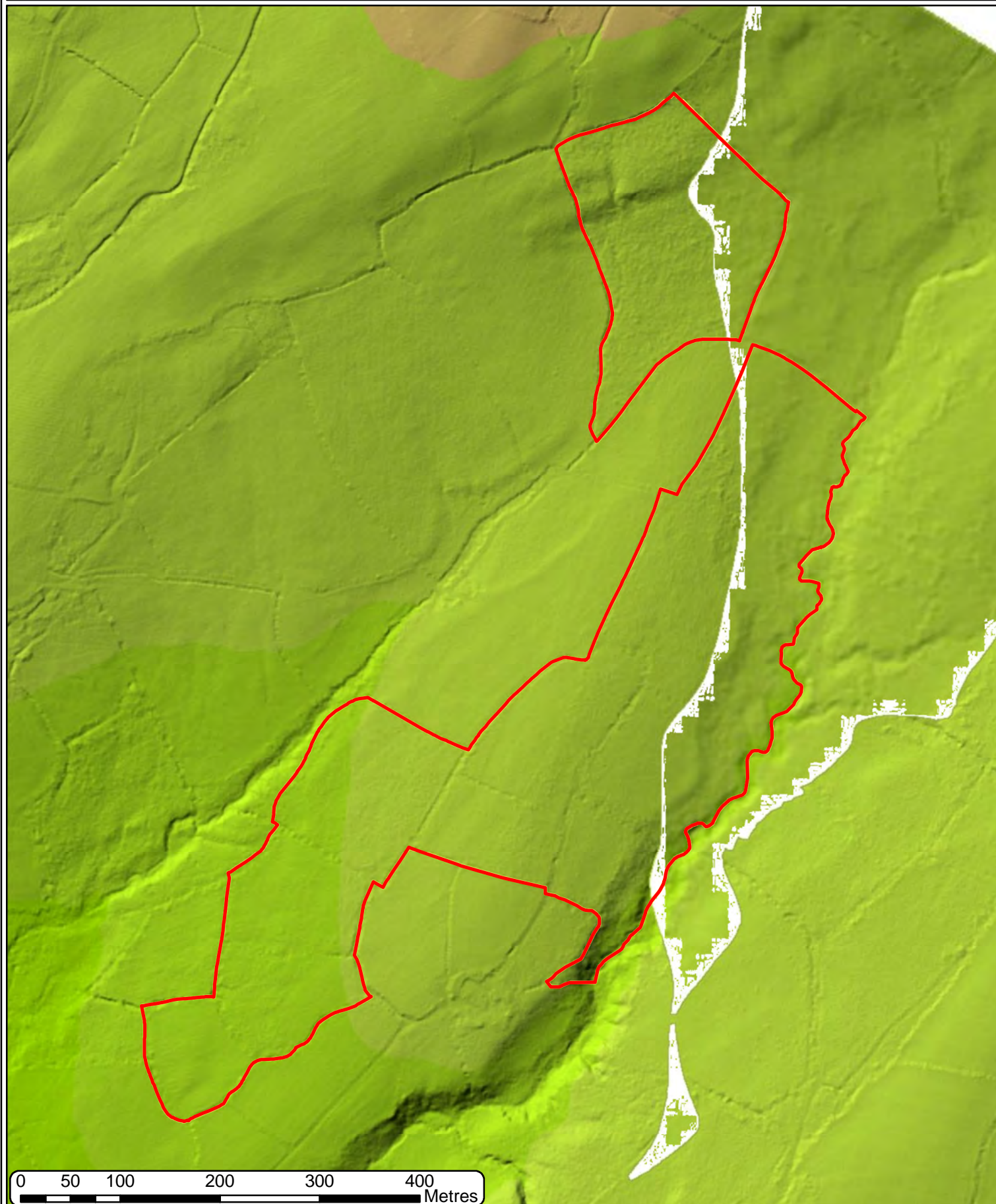


# S001 2018 NANT-Y-MEILLION LIDAR DSM



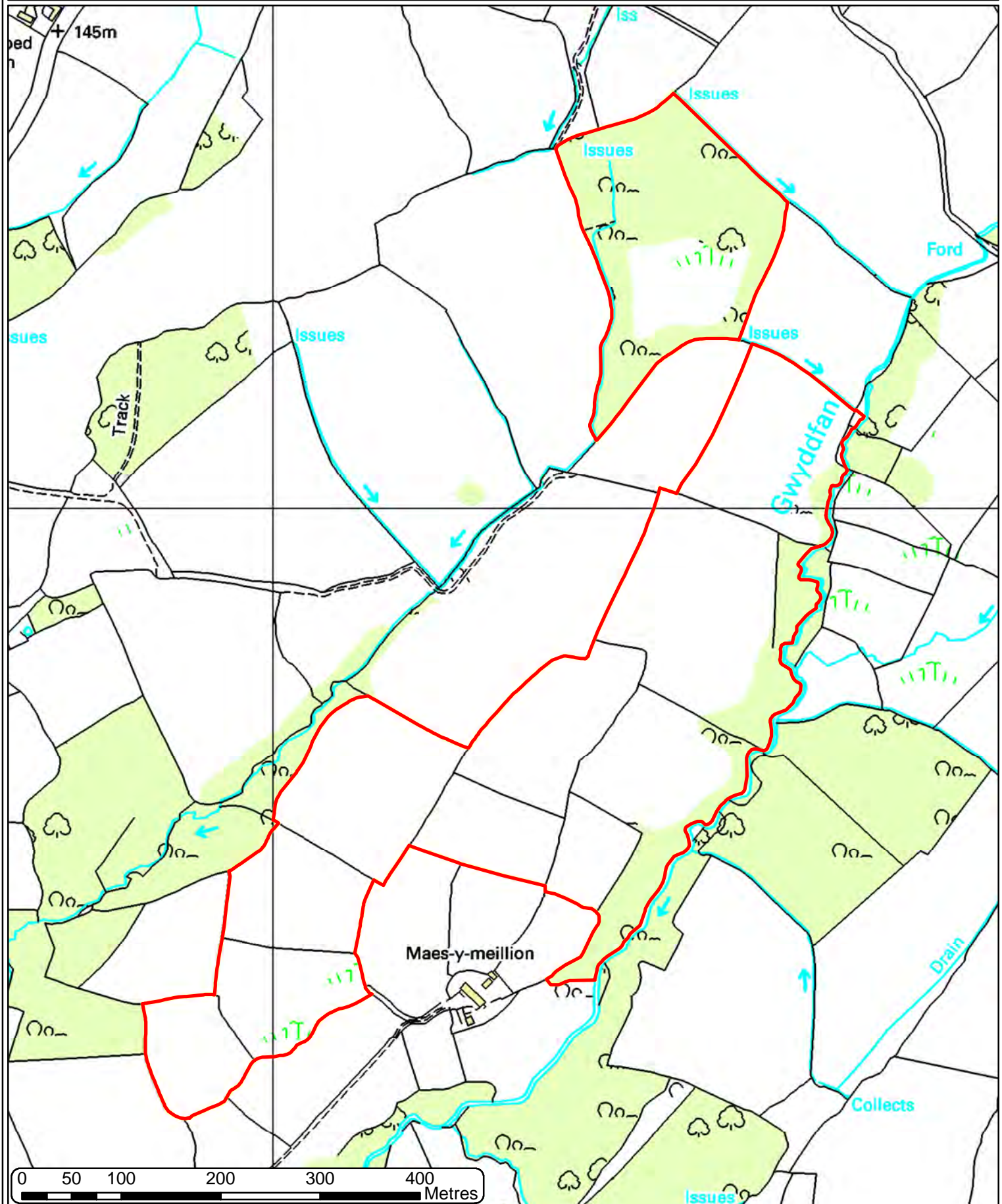


# S001 2018 NANT-Y-MEILLION LIDAR DTM



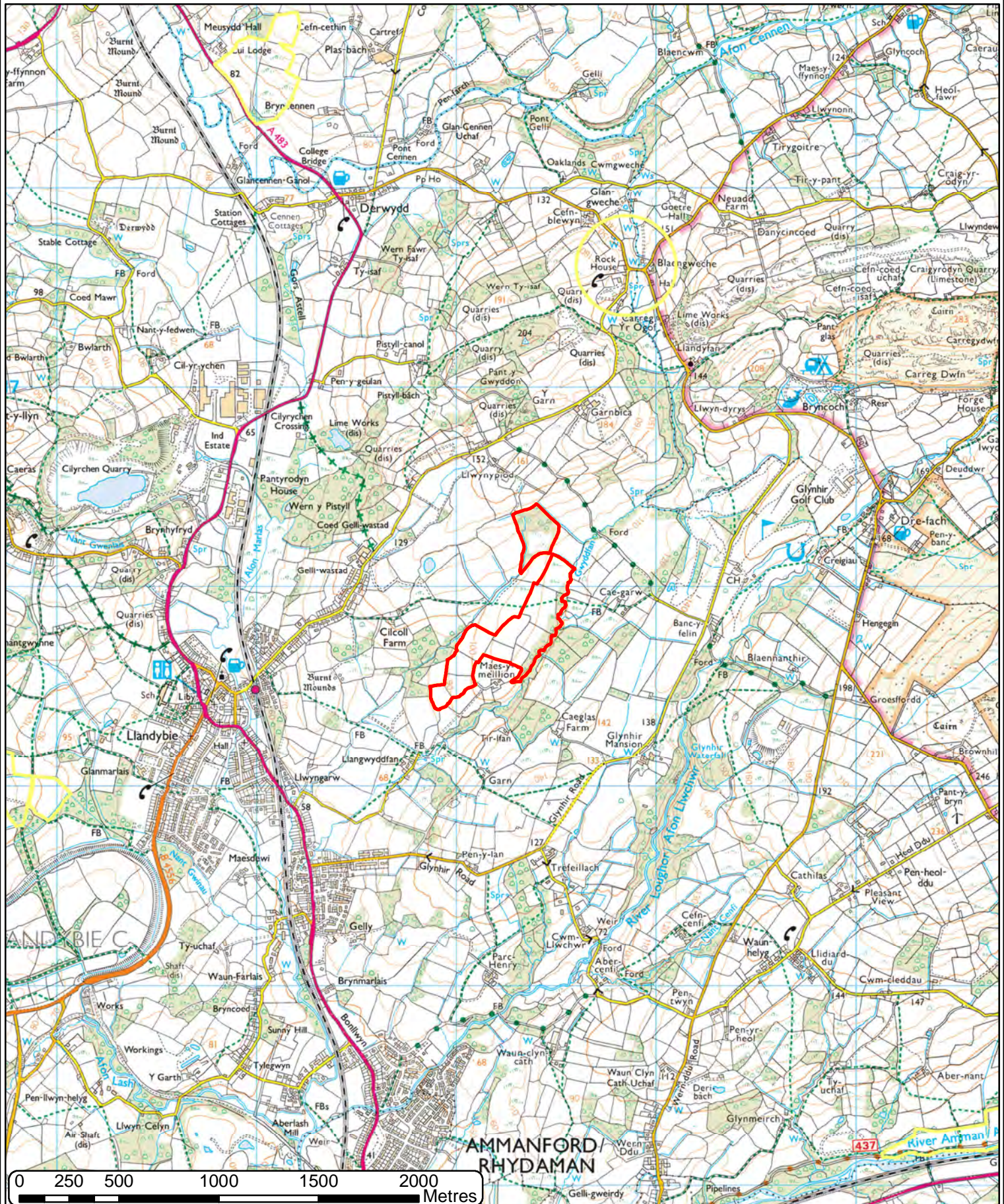


S001 2018 NANT-Y-MEILLION LOCATION MAP 5K



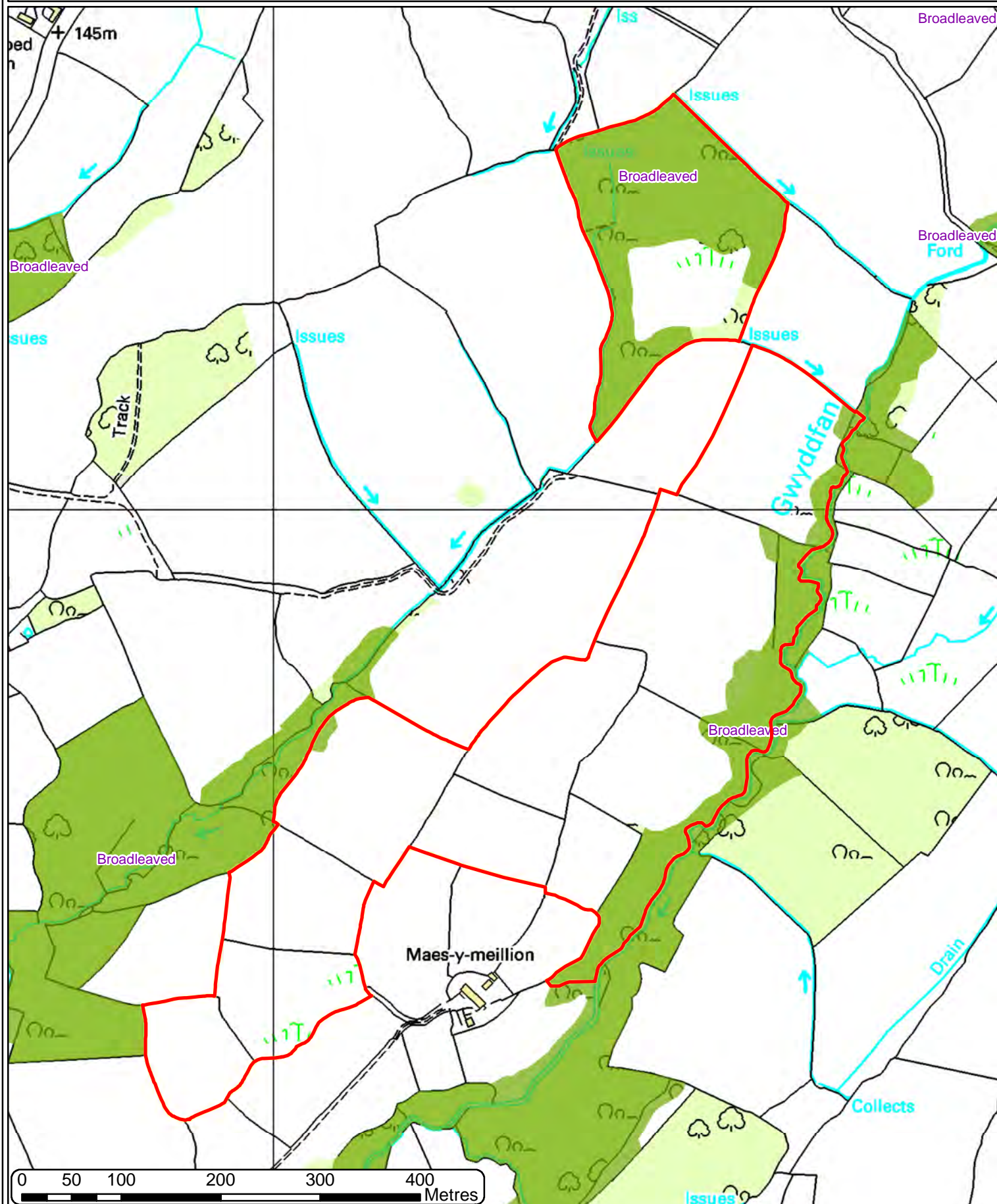


# S001 2018 NANT-Y-MEILLION LOCATION MAP 25K





## S001 2018 NANT-Y-MEILLION NATIONAL FOREST INVENTORY





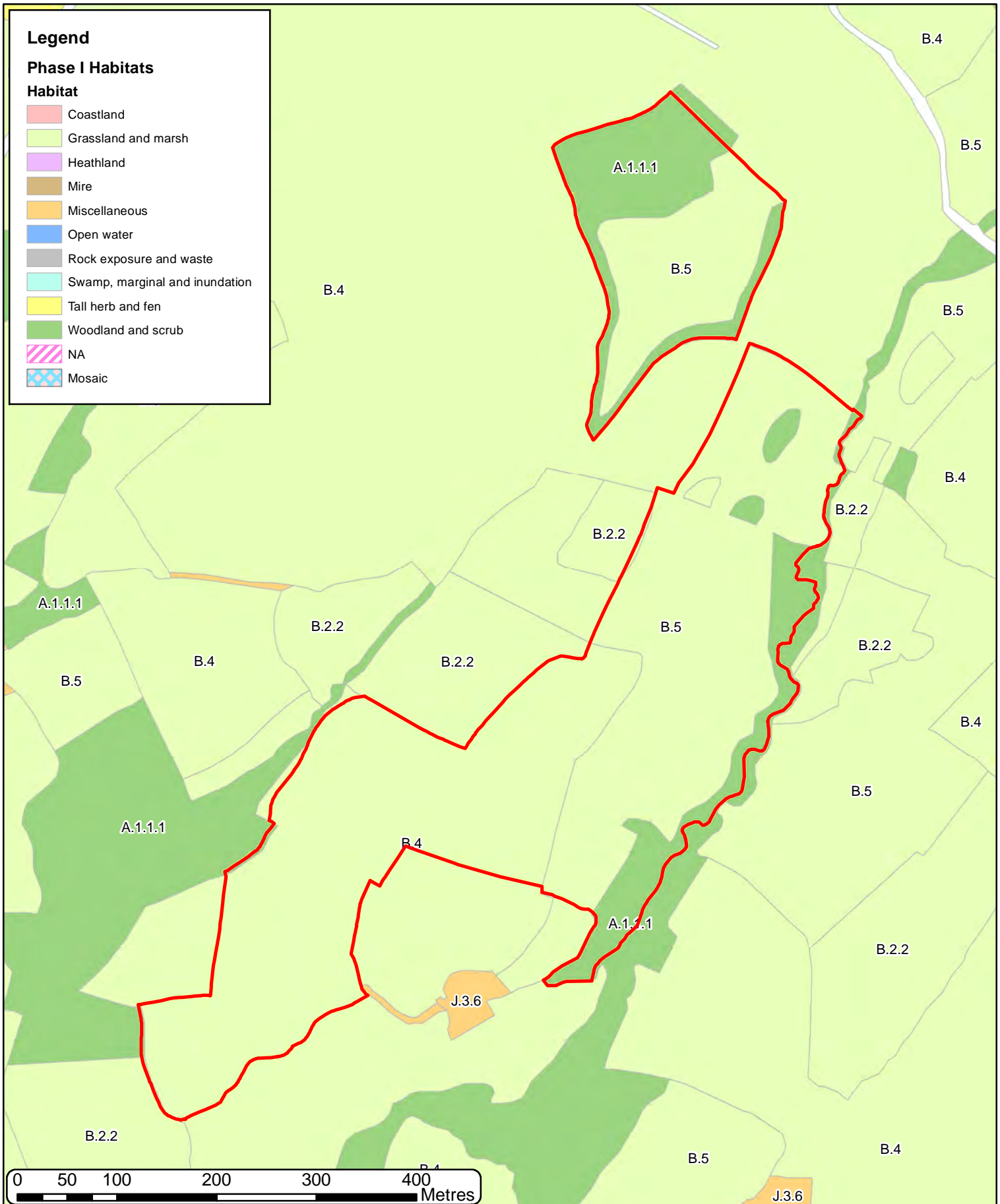
# S001 2018 NANT-Y-MEILLION PHASE 1

## Legend

### Phase I Habitats

#### Habitat

- Coastland
- Grassland and marsh
- Heathland
- Mire
- Miscellaneous
- Open water
- Rock exposure and waste
- Swamp, marginal and inundation
- Tall herb and fen
- Woodland and scrub
- NA
- Mosaic





This map illustrates the Maes-y-meillion site, highlighting its diverse habitats and management zones. The site is bounded by a red line and includes several key features:

- Habitats and Management Areas:**
  - Dense scrub/woodland:** Located in the northern and eastern parts of the site.
  - Mosaic:** Found in the central and eastern areas.
  - Semi-improved Grassland:** Located in the central and eastern parts.
  - Improved grassland:** Found in the central and southern parts.
  - Rhodydd Gwyddfan:** A specific area within the improved grassland.
  - MG5c, M23a, M23b, M24b/c, M25b, M25c, M6d, M6c:** Specific management areas or plots.
- Water Features:**
  - Ford:** A crossing point for a watercourse.
  - Drain:** A drainage system.
  - Collects:** A collection point for water.
  - Issues:** Areas identified as having specific issues, marked with blue arrows.
- Infrastructure:**
  - Track:** A dashed line indicating a track.
  - Maes-y-meillion:** The main site area, labeled in the center.
- Scale and Orientation:**
  - Scale:** A scale bar at the bottom left indicates distances from 0 to 400 metres.
  - Orientation:** A north arrow is located in the top right corner.