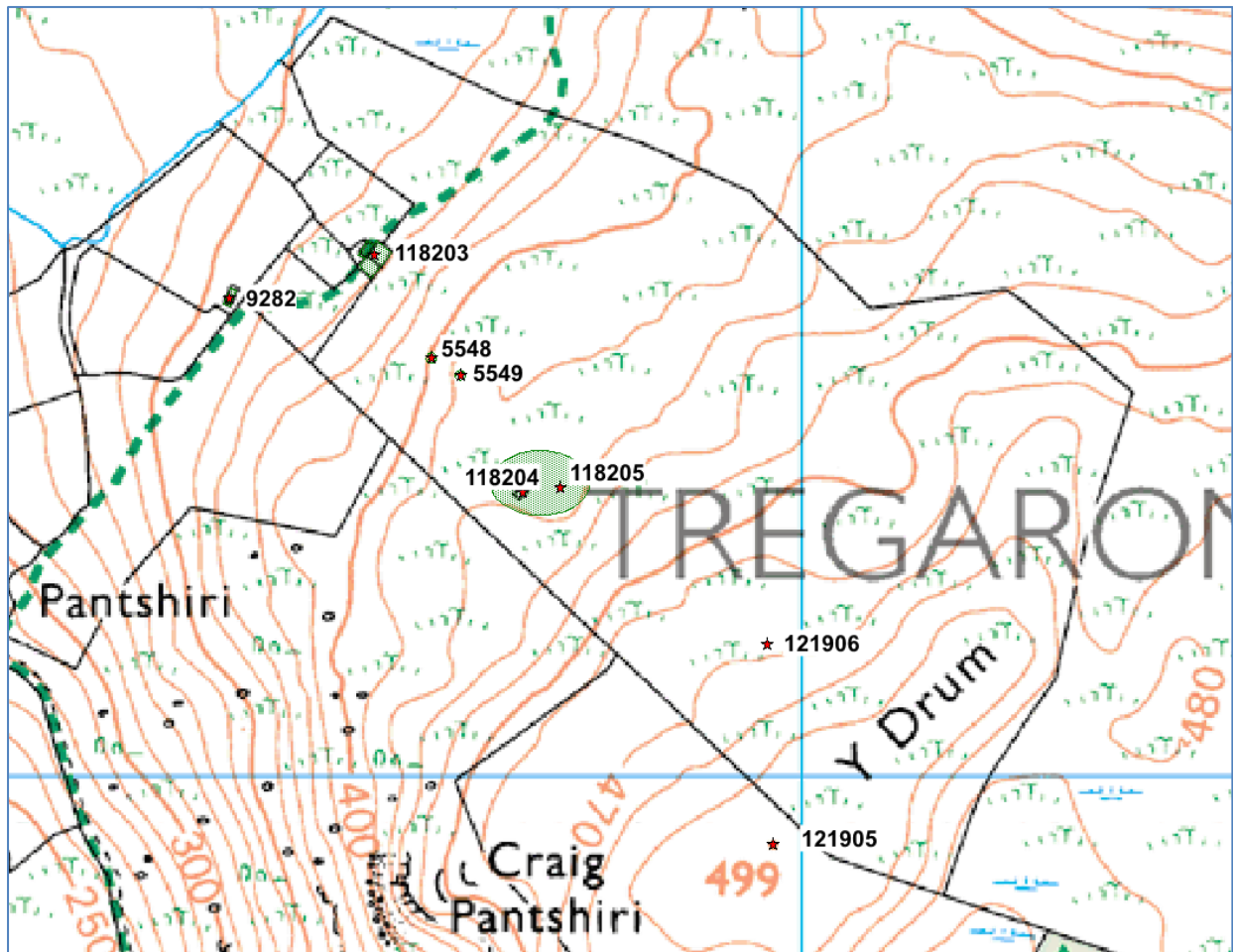


Glastir Woodland Creation: Consent Advice Form

CRN	A0066087
Glastir Farm Name and Scheme Ref.	Pantshiri (Cwm Berwyn) EOI 7618715
Parcel No.	
NGR	SN717591
Option No.	
Option Name	
Date last cultivated	
Additional information	
Service Provider	Dyfed Archaeological Trust
Officer	Alice Pyper
HEF UID	311038;311039;311037;315659;
	<p>Thank you for forwarding this Glastir Woodland Creation proposal to us.</p> <p>Dyfed Archaeological Trust Heritage Management (DAT-HM) have reviewed the new planting proposals for Pantshiri (Cwm Berwyn) against the Historic Environment Records database and other readily available record sources and have assessed that the application, as submitted, has the potential to have an impact upon the following Historic Environment Features (HEFs):</p> <p>PRN 5548 QUARRY SN71655939 A circular hollow about 10 metres in diameter and up to 3 metres deep with some spoil of large blocks. It looks like a shaft but is probably just an unusual quarry. JS from P. Sambrook, Trysor, 28 March 2013 Associated with PRN 5549</p> <p>PRN 5549 QUARRY SN71675937 A circular hollow about 10 metres in diameter and up to 3 metres deep with some spoil of large blocks. It looks like a shaft but is probably just an unusual quarry. JS from P. Sambrook, Trysor, 28 March 2013 Associated with PRN 5548</p> <p>PRN 9282 BRYN-BRAN;BANC COTTAGE SN7145959452</p>

	<p>Named and shown on 1964 OS 1:10560 map. Deserted 19th century cottage or minor farmstead. Visited in 1997 and found to be in very ruinous condition. RPS June 2001.</p> <p>PRN 118203 LLANGORS-FACH COTTAGE SN71585949 A cottage and associated enclosures are recorded on the 1st and 2nd edition Ordnance Survey maps (1889 & 1905). A Pyper 2020</p> <p>PRN 118204 LONG HUT SN7173659270 A long hut situated on a southwest northeast long axis and recorded on the modern OS mapping as two celled, about 13.8 m x 5m. A visit as part of the Royal Commission's Upland Survey in 2013 noted that it was defined by low wall bases and also noted an earth mound some 10 meters to the west. Associated with PRN 118205. A Pyper 2020.</p> <p>PRN 118205 FOOD STORE SN7177759272 A stone lined sunken feature defined by two parallel banks, approximately 6 m long identified by the RCAHMW Upland Survey in 2013, associated with PRN 118204. A Pyper 2020</p> <p>PRN 121905 TRIANGULATION POINT SN71975894 A trig point recorded on the 1st and 2nd edition Ordnance Survey maps (published 1889 and 1905). A Pyper 2020</p> <p>PRN 121906 PEAT CUTTING SN7196859123 An area of peat cutting has been observed approximately 100m E-W by 40m. A Pyper 2020 based on RCAHMW Upland Survey.</p> <p>In addition the proposals lie in the Upland Ceredigion Registered Landscape of Outstanding Historic Interest (HLW (D) 2) and the Historic Landscape Character Area Y Drum which was historically an unenclosed sheepwalk.</p> <p>DAT- HM therefore advise that a site visit is carried out to assess the impact of the proposals and the extents of archaeological features.</p>		
Further Assessment Required?	Yes – a site visit is recommended.		
Date received	06/07/2020	Date replied	26/08/2020



Reproduced by permission of Ordnance Survey on behalf of HMSO. © Crown copyright and database right 2011. All rights reserved. Ordnance Survey Licence number 100017916.