

# FFOSYFFIN AERIAL PHOTOGRAPHY 2006





# FFOSYFFIN AERIAL PHOTOGRAPHY 2009-10





## An aerial photograph of a rural landscape, likely in the UK, showing a patchwork of green agricultural fields separated by stone walls and narrow paths. A prominent red line is drawn on the image, outlining a specific area of interest. This area includes a large, roughly rectangular field in the upper center and a smaller, more irregularly shaped field below it, which appears to contain some scrub or trees. The surrounding fields are various shades of green, indicating different crops or vegetation. A scale bar at the bottom left corner shows distances from 0 to 160 metres in increments of 20.



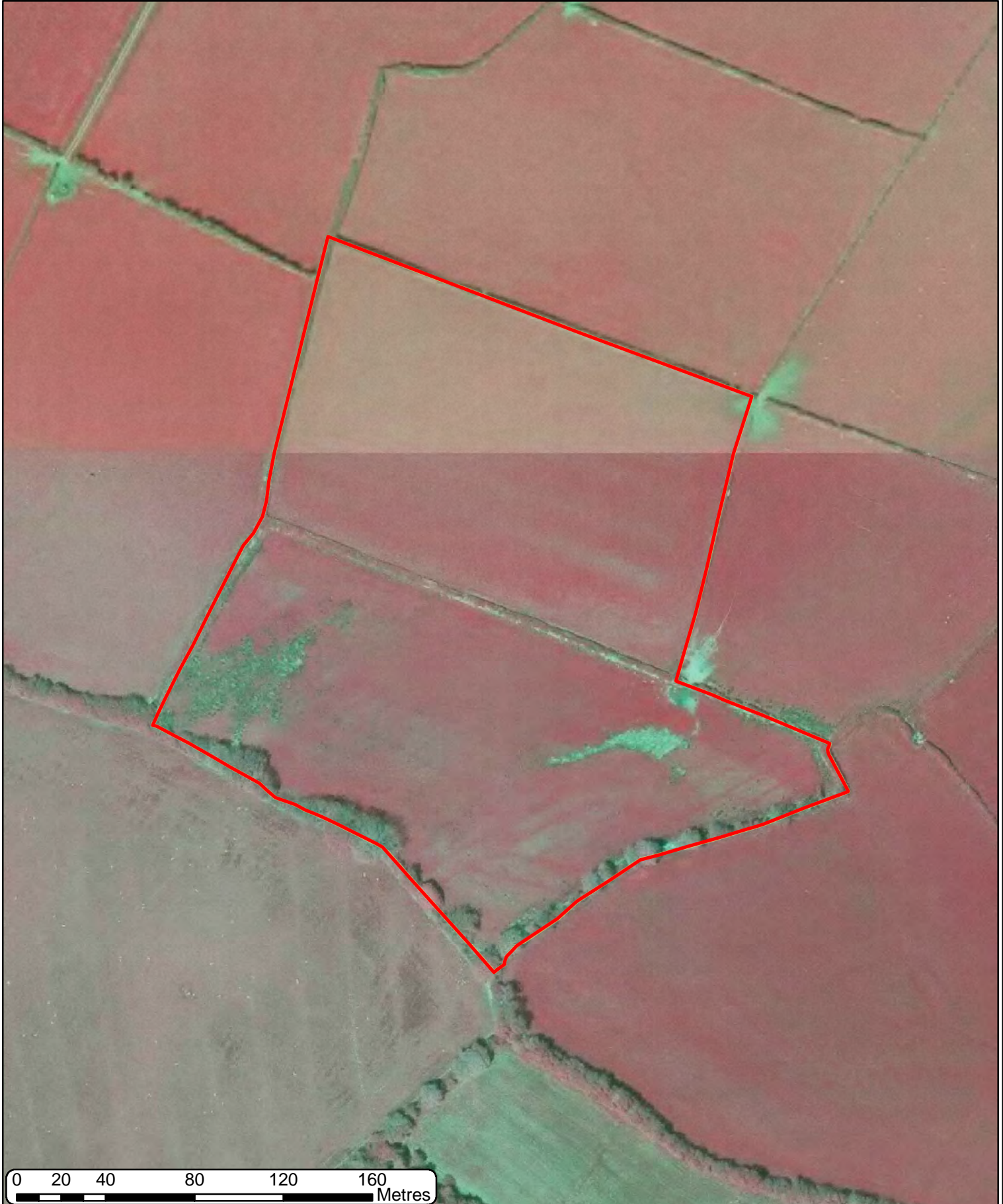
# FFOSYFFIN AERIAL PHOTOGRAPHY 2016



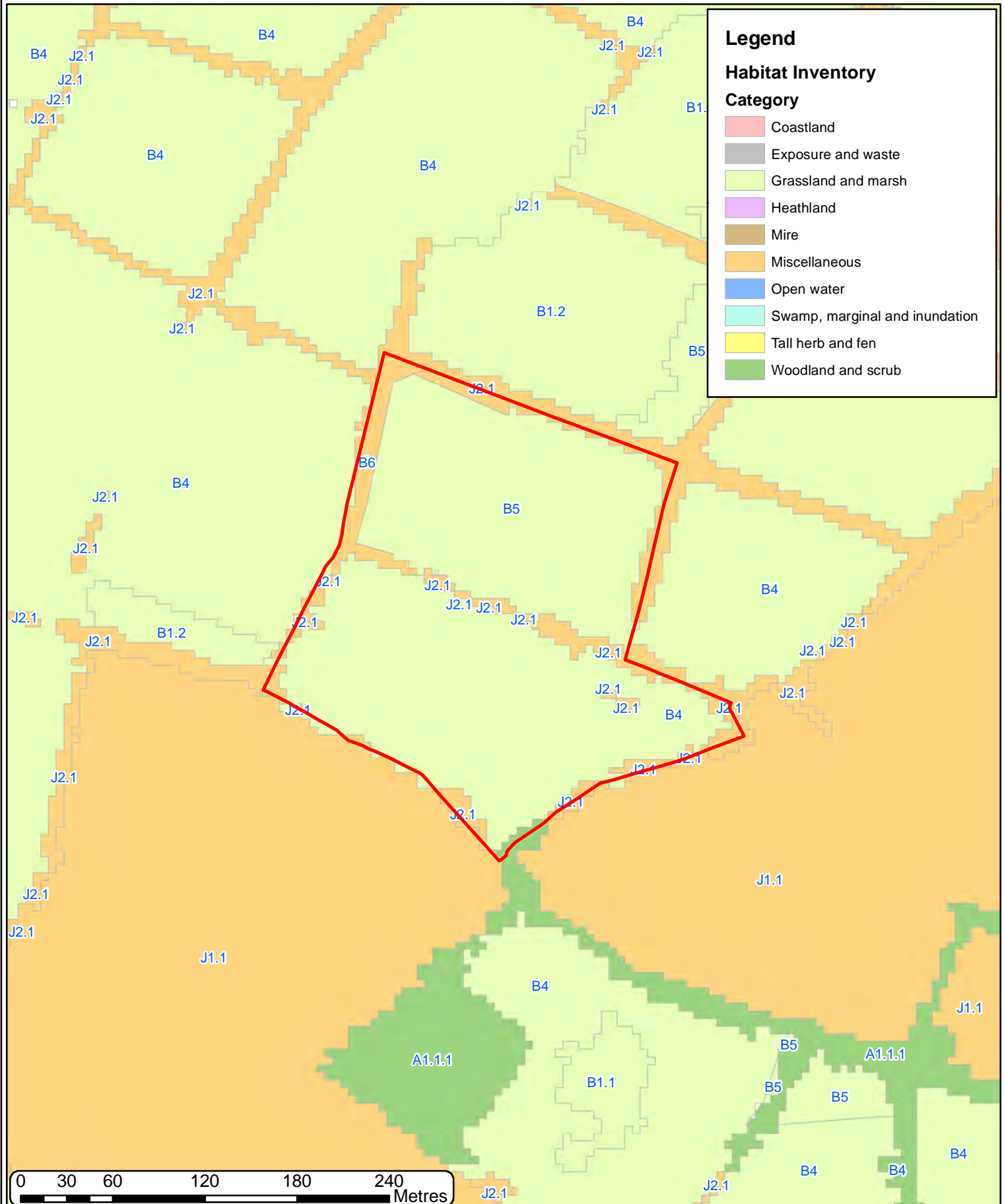
0 20 40 80 120 160  
Metres



# FFOSYFFIN AERIAL PHOTOGRAPHY CIR 2014

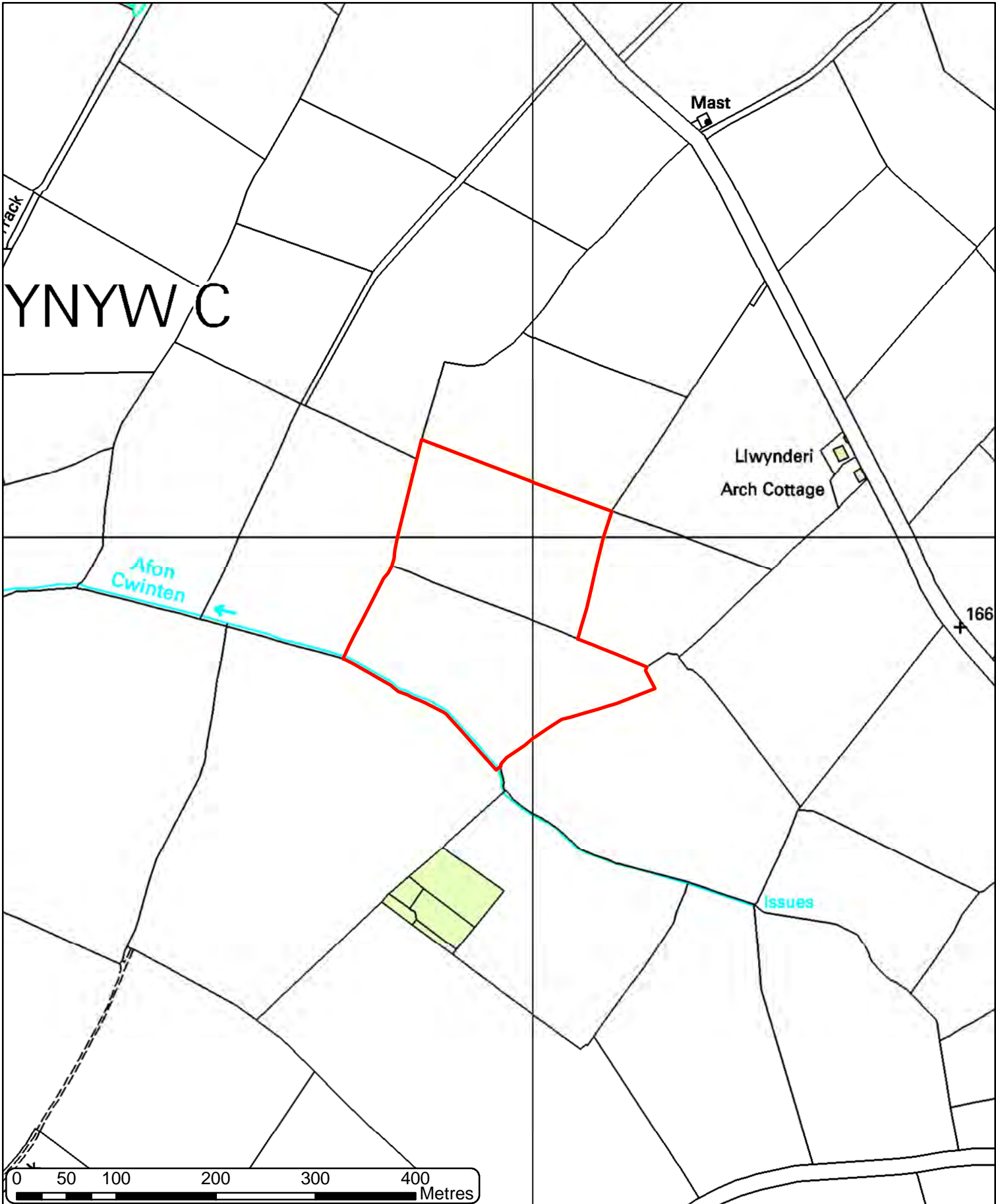


# FFOSYFFIN HABITAT INVENTORY OF WALES



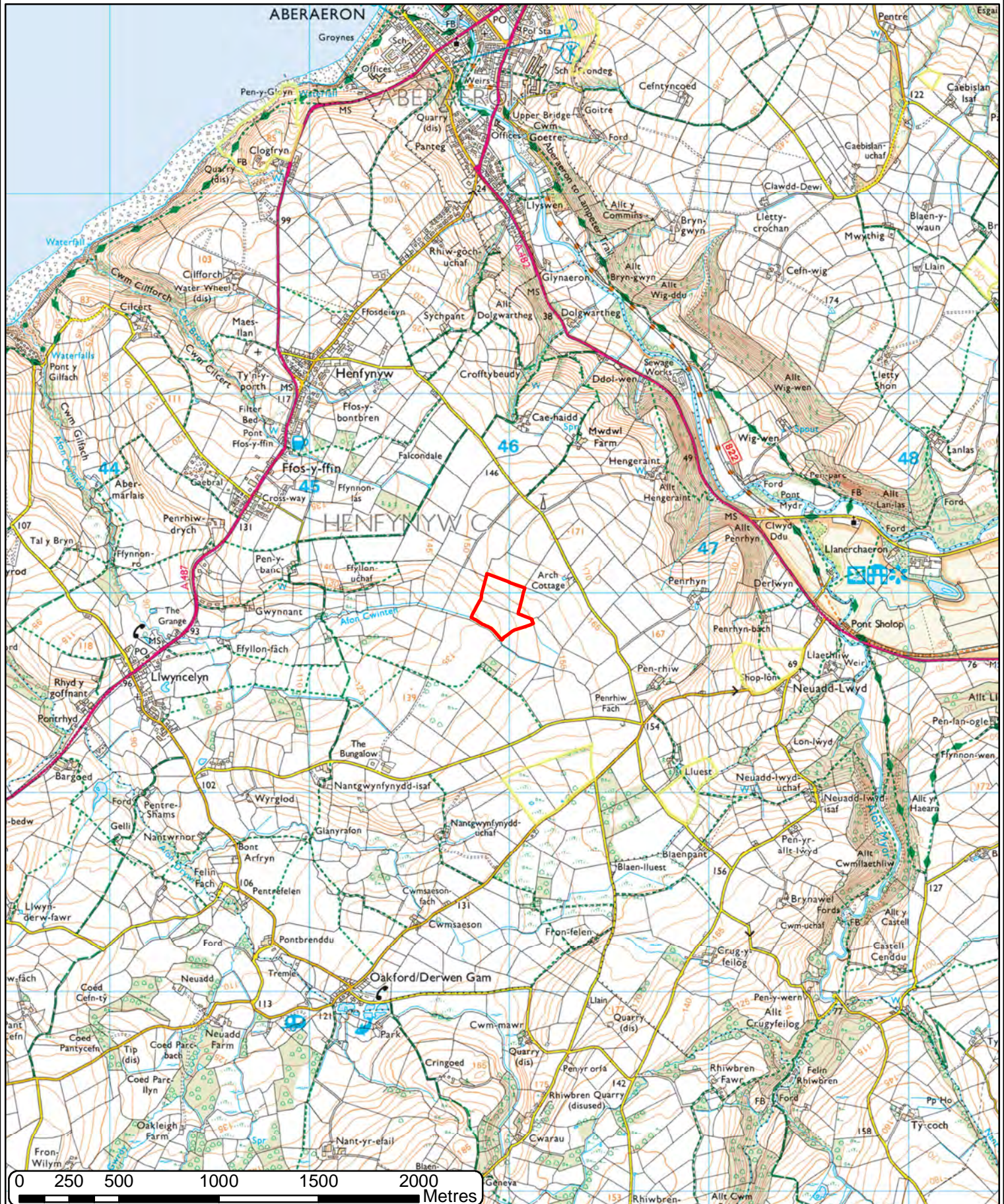


FFOSYFFIN LOCATION MAP 5K





# FFOSYFFIN LOCATION MAP 25K





FFOSYFFIN PHASE 1

