

Woodland Creation: Consultation Advice Form

CRN	
Pre-app No	24-ZD-197, 24-AW-196, 24-SP-195
Application Name	Cwm Doethie, Ochor Nantllwyd, Ochor Soar
Parcel No.	
NGR	SN77475310
Option Number (if known)	
Woodland category	Not given (Native/Broadleaf)
Woodland Planner	
Service Provider	Heneb – Dyfed Archaeology
Officer	A Pyper
HEF UID	
Advice (If the proposal is considered to be inappropriate at this location please provide an explanation)	<p>This application area encompasses largely unenclosed open land which falls in the Historic Landscape Character Area of Bryngwyn Bach, see description https://dyfedarchaeology.org.uk/HLC/uplandceredigion/bryngwynbach.htm</p> <p>The recorded archaeology spans a great time depth including Bronze age funerary and ritual sites (standing stones and burial cairns). This is also a rich landscape of agricultural landuse with numerous dwellings and farmsteads, many only surviving as earthwork remains, some which have continued into more recent use. Industrial land use is evident by the remains of the leadmine at Rhydtalog.</p> <p>This initial screening has identified two Scheduled Monuments (CD254, CD255), both the remains of prehistoric burial cairns, and 54 Historic Environment Records, see list appended below and associated maps. The records are largely point data, and therefore the full extent of these historic features has not been assessed.</p>



	<p>The initial screening has included a very rapid assessment of LiDAR and this has added a further 6 records to the HER.</p> <p>It is recommended that before the design plan for planting is finalised an archaeological desk-based assessment is commissioned, including a walkover survey. This will provide the best information on which to base the planting proposals. The DBA should assess documentary sources, but particularly assess LiDAR which can be ground-truthed in the walkover survey</p> <p>Heneb Dyfed Heritage Management can be contacted for further information and advice.</p>		
Further Assessment Required?	Yes – Desk-based assessment		
Map attached?	Yes		
Date received	07-11-2024	Date replied	08-12-2024



PRN	Site Name	Summary	Description	Period	Type	Status Ref	NGR
5555	Carn Saith-wraig	<p>This is a large, disturbed composite ring/round platform cairn. It is situated on a shelf in a secluded position on the south-west side of a broad ridge at 430m above OD. It comprises a ring of earth and stones, 4m wide and 21.5m in diameter overall. Where best preserved, in the north-east quadrant, the ring is 0.4m high on the outside and 0.3m high on the inside. Within the ring is a mass of tumbled stone and it is reasonable to suppose that this mass represents a round cairn formerly existing at the centre of the ring. The mass has been cleared to ground level along a line from the north-east side to the centre and beyond, and a cutting has been made through the ring to the south-west. There is no sign of a cist. A pile of fence posts have been dumped on top of the cairn and a small fire has recently been lit. Vehicle tracks are encroaching upon the site and pose an immediate threat. NC 2001.</p>	<p>A further visit to the site (2004-05) noted a modern marker cairn had recently been placed at the centre of the monument, modern fenced-off sheep pens were located within 2m of the site and most of the pile of fence-posts had now been removed. This is a very impressive monument and appears to be quite deliberately sited for its stunning views. The site also looks out over to the location of the Bryn Gorlan group of monuments to the northwest. NC. 2006</p> <p>The site appeared little changed during a Tir Gofal field visit on 29/05/08 to the previous descriptions. The mapping of the cairn on the 1:10000 Ordnance Survey map has extended the dimensions of the feature by including its topographical situation. The site looked stable, the reported pile of fence posts had been removed and a walkersâ€™ cairn was in evidence near the centre of the monument. The cairn is within a field of low-intensity grazing. A long-standing farm access runs close to the eastern edge of the site that would not normally pose a problem due to the low-level impact of farm vehicles. Unfortunately the illegal use of the land by off-road vehicles does create</p>	Bronze Age	Ring Barrow; Round Barrow	CD255	SN77105297

			<p>a threat to the welfare of the archaeology and a solution to this unwelcome trespassing is, as yet, unforthcoming. The fences of sheep-holding pens run close to the northern perimeter of the barrow and, while not perceived as a problem in themselves, they do force any vehicular access to the west, authorised or not, close to the monument. It is suggested that should the fence need replacing at any time that the corner is cut off to widen the area between it and the barrow.</p> <p>W.Steele 2008</p>				
--	--	--	---------------------------------------------------------------------------------------------------------------------------------------------------------------------------------------------------------------------------------------------------------------------------------------------------------------------------------------------------------------------------------------------------------------------------------------------------------------------------------------------------------------------------	--	--	--	--

8527	Carn Saith-wraig	<p>A round cairn situated at 430m above OD, upon a low ridge in open moorland. Composed of stones and small boulders with some quartz and turf covered along the perimeter, it has a diameter of c.13.5m and a maximum height of 0.8m. It has been dug to the centre from the north, east and west sides. At the centre are a number of flagstones up to 0.5m across, possibly the remains of a cist/cists, but at present they are lying in disarray within the central crater. There are no traces of kerbing. This cairn is intervisible with nearby cairn 9009, and also with cairn 5555. NC 2001.</p>	<p>The cairn was revisited during the Tir Gofal visit of 29/05/08 and appeared as described during the field visit of 2001. The mapping of the cairn on the 1:10000 Ordnance Survey map has extended the dimensions of the feature by including its topographical situation. Its location on the crest of a ridge helps to protect it from the potential threat of the farm access track to the west and the recently erected fenceline to the south of the monument is unlikely to have caused any damage to the site. As with cairn PRN 5555, the main problem concerns the illegal and unpredictable action of off road drivers trespassing on the land. The monument is within a field of rough, low intensity grazing. W.Steele 2008</p>	Bronze Age	Round Barrow	CD255	SN77185288
------	------------------	------------------------------------------------------------------------------------------------------------------------------------------------------------------------------------------------------------------------------------------------------------------------------------------------------------------------------------------------------------------------------------------------------------------------------------------------------------------------------------------------------------------------------------------------------------------------------------------------------------	-----------------------------------------------------------------------------------------------------------------------------------------------------------------------------------------------------------------------------------------------------------------------------------------------------------------------------------------------------------------------------------------------------------------------------------------------------------------------------------------------------------------------------------------------------------------------------------------------------------------------------------------------------------------------------------------------------------------------------------------------	------------	--------------	-------	------------

8528	Blaen Nant-y-rhiw	<p>A small round cairn on the highest point of a broad ridge at 461m above OD. The site consists of a rough platform of large stones, 6m in diameter and 0.2m high. The feature is grass-covered and would appear to be undisturbed except for a small modern marker cairn, 1.2m in diameter and 0.3m high surrounding a wooden post, which has been erected at the centre of the monument. The cairn is intervisible with standing stone 9117 and another possible prehistoric cairn, 9118, to the S and SW of this site respectively. The site enjoys extensive views out down the Doethie valley and over to the Brecon Beacons. NC 2001.</p>	<p>A further visit to the site was made in 2004-05, when the following record was made; the vegetation surrounding the monument was clearer and revealed the cairn to have a diameter of c.8m and a height of 0.4m. The site was clearly distinguished from the surrounding long grass by noticeably shorter vegetation and probing with a ranging rod suggests only a thin grass cover. NC 2006</p> <p>During the field visit of 29/05/08 the site appeared little changed from the description offered in 2001. The wooden post erected at the centre of the monument had been removed but the site appeared undisturbed and was stable beneath a good coverage of rough grasses and reeds. The area is under low intensity grazing. The only potential threat at present is the illegal use of the area by off road vehicles. The mapping of the cairn on the 1:10000 Ordnance Survey map has extended the dimensions of the feature by including its topographical situation. W.Steele 2008</p>	Bronze Age	Round Barrow	CD254	SN76765347
9009	Carn Saith-wraig; blaen Nant-y-rhiw	<p>A partially disturbed cairn located 170m south-south-east of Carn Saith-Wraig round barrow (PRN 5555) on a narrow ridge. The cairn measures roughly 13m in diameter and stands to a height of 1m and is intervisible with another Bronze Age cairn, PRN</p>	<p>This barrow site was not located during the Tir Gofal archaeological farm visit of 29/05/08 despite an extensive search of the area, including the use of a GPS, suggesting that the recorded location (2001) may be incorrect. There are several glacial knolls in the vicinity. W.Steele 2008</p>	Bronze Age	Round Barrow		SN77125291

		8527, located 70m away to the N. Extensive views out over the surrounding landscape. NC 2001.					
9112	Bryn-brith	Pair of buildings in line, shown on Tithe map. NC 2001.	Site visited on 29/05/08 and seen to be in an upland field of rough grazing, stable and under no immediate threat. A tree stands close to the east of the buildings but it isn't considered a problem, being healthy, sturdy and with no trailing branches. There are at least two ruinous buildings; the better preserved aligned East-West with an entranceway on the southern side. On the same alignment but staggered so that its northern wall is in line with the southern wall of the first building, the second building is less complete and may be an earlier structure. This appears to have two entrances, one at the northeast corner of the eastern wall and one at the northwest corner of the northern wall. Further banks/possible walls are apparent to the south and west of the buildings, either the remnant of further buildings or associated plots. The remains of another building (PRN 64691) were recorded nearby, to the west. W.Steele 2008	POST MEDIEV AL	Dwellin g		SN77655387

9113	Brithdir	Small farmstead complex now ruined. Shown as a parallel pair of buildings on the Tithe map. NC 2001.		POST MEDIEVAL	Farmstead		SN78155322
9114	Rhydtalog			POST MEDIEVAL	Dwelling		SN7915652064
9115	Rhydtalog Mine	Established during the 18th century. Redeveloped in the 19th century by the Rhydtalog Silver-Lead Mining Co. Ltd., but shut in 1873. Lead ore output-50 tons. NC 2001.		POST MEDIEVAL	Lead Mine		SN791522
9117	Blaen Nant-y-rhiw	<p>A large recumbent white quartz boulder, facing N-S, and intervisible with prehistoric cairns PRN 9118 and PRN 8528 which lie a short distance away to the SW and N respectively. The stone is situated on a small knoll which forms part of a ridge running across an undulating high plateau with extensive views, particularly in the southern sector down the Doethie valley. The view to the N is obscured by forestry. The stone measures 1.8m in length N-S, 1.15m wide at its widest point E-W and 0.7m in height at its northern end, tapering to 0.55m in height at its southern tip. Extensive views are achieved from the site</p>	<p>The boulder appears to sit upon a possible platform of earthfast stones, exposed by sheltering sheep on the southeast side, and an angled stone on the northeast side is suggestive of a possible stone-setting. The monument is within a field under low-intensity rough grazing and appears stable. The only potential threat is the unpredictable action of illegal off road drivers on the land. W.Steele 2008</p> <p>This stone clearly stands out as a large white quartz block when viewed from PRN 9118 (located 180m away at 250 degrees). It is also clearly visible from PRN 8528, located 90m away to the N (at 6 degrees). The long axis of this stone is itself aligned 185-05 degrees. N Cook PFRS 2006</p>	Bronze Age	Standing Stone		SN7675653384

		<p>which may well have enjoyed a 360 degree panorama, and the Brecon Beacons were clearly visible to the SE. NC 2001.</p>					
--	--	---------------------------------------------------------------------------------------------------------------------------	--	--	--	--	--

9118	Blaen Nant-y-rhiw	<p>The remains of a probable prehistoric cairn sited a short distance away from standing stone 9117 and cairn 8528, and intervisible with both. Fantastic views out over the Doethie valley with the Brecon Beacons also visible on the horizon to the SE. A winter visit will better establish the exact shape and nature of this monument. NC 2001.</p>	<p>The remains of a probable prehistoric cairn sited a short distance away from standing stone 9117 and cairn 8528, and intervisible with both. Fantastic views out over the Doethie valley with the Brecon Beacons also visible on the horizon to the SE. A winter visit will better establish the exact shape and nature of this monument. NC 2001. On the ground it looks like a pair of spectacles, that is, two circular cairns joined by a linear bridge. The site was previously recorded as a possible hut circle but the site is far more typical of a cairn than a domestic dwelling. As much as anything it is located in a very exposed location offering no shelter. It is possible that this site consists of two small Bronze Age cairns, c.3m in diameter and 0.3m high, with a "bridge" of stones, 2m long, connecting the two together " possibly a very rare form of monument known as a "conjoined cairn" NC 2006</p> <p>The site is located on a natural knoll or terrace, grassed over and stable. It was recorded during the 2008 Tir Gofal archaeological farm visit as a relatively small, oval cairn with a slight (approximately 0.30m) bank defining the edge of the monument, some 6 metres in diameter east " west. The pile of loose stone to the</p>	Bronze Age	Hut Circle; Round Barrow	SN76605333
------	-------------------	-----------------------------------------------------------------------------------------------------------------------------------------------------------------------------------------------------------------------------------------------------------------------------------------------------------------------------------------------------------	--------------------------------------------------------------------------------------------------------------------------------------------------------------------------------------------------------------------------------------------------------------------------------------------------------------------------------------------------------------------------------------------------------------------------------------------------------------------------------------------------------------------------------------------------------------------------------------------------------------------------------------------------------------------------------------------------------------------------------------------------------------------------------------------------------------------------------------------------------------------------------------------------------------------------------------------------------------------------------------------------------------------------------------------------------------------------------------------------------------------------------------------------------------------------------------------------------------------------------------------------------------------------------------	------------	--------------------------	------------

			<p>northwest was interpreted as the possible discard from the excavation of the centre. The only potential, immediate threat could be the illegal use of the land by off road vehicles. W.Steele 2008</p> <p>The remains of a probable prehistoric cairn sited a short distance away from standing stone PRN 9117 and calm PRN 8528, and intervisible with both. Fantastic views out over the Doethie valley with the Brecon Beacons also visible on the horizon to the SE. It is difficult to establish the exact nature of this monument, although it would appear to be much disturbed. On the ground it looks like a pair of spectacles, i.e. two circular cairns joined by a linear bridge. The site was previously recorded in the HER as a possible hut circle, but the site is far more typical of a cairn than a domestic dwelling. As much as anything it is located in a very exposed location offering no shelter. It is possible that this site consists of two small Bronze Age calms, c.3m in diameter and 0.3m high, with a 'bridge' of stones, 2m long, connecting the two together. The cairns are aligned ESE-WNW, and would appear to be sited in close association with two other prehistoric funerary/ ritual monuments (PRNs 9117 and 8528), and</p>				
--	--	--	-----------------------------------------------------------------------------------------------------------------------------------------------------------------------------------------------------------------------------------------------------------------------------------------------------------------------------------------------------------------------------------------------------------------------------------------------------------------------------------------------------------------------------------------------------------------------------------------------------------------------------------------------------------------------------------------------------------------------------------------------------------------------------------------------------------------------------------------------------------------------------------------------------------------------------------------------------------------------------------------------------------------------------------------------------------------------------------------------------------------------------------------------------------------------------------------------------------------------------------------------------------------------------	--	--	--	--

			<p>in an area of landscape where there are two other distinct groups of PFRS monuments, on Bryn y Gorlan (PRN 48381) to the NW and Carn Saith-Wraig to the SE (PRN 48384). N Cook PFRS 2006</p>				
--	--	--	-------------------------------------------------------------------------------------------------------------------------------------------------------------------------------------------------	--	--	--	--

9289	Doethie Fach	<p>Stone farmstead and enclosed in-field. Evidently in use in 20th century. Farmhouse consists of two equal sized rooms, overall length 17.7 x 6.3m east-west. Possible footing of earlier building under the western end. Collapsed roof slate. Entrances to the south into each room and through the west wall. NC 2001. To the SW there the mapping shows a rectangular buildings in the corner of an attached enclosure. This is obscured by trees and its current state of survival is unclear. The main cottage is shown on the most recent Ordnance Survey mapping (Mastermap 2011) and recent aerial photographs (Ordnance Survey Next Perspectives 2009) show the walls still survive.</p>	<p>The site is remote, located in the river valley of the Doethie Fach. Certain aspects of the building suggest a possible longhouse with its two rooms and its side entrance/exit facing onto the enclosed in-field. The building to the west of the house is unusual, the lower courses of stones appear to form a circular structure, maybe a pigsty, but the wall abutting and partly overlying the top of this is straight and possibly forms part of a later building. Some roof slates, ceramic ridge tiles and broken fragments of two cauldrons were seen within the house perimeter. The current condition of the site, when visited on 29/05/08, is stable and there are no immediate threats apparent. W.Steele 2008</p> <p>Stone farmstead and enclosed in-field. Evidently in use in 20th century. Farmhouse consists of two equal sized rooms, overall length 17.7 x 6.3m east-west. Possible footing of earlier building under the western end. Collapsed roof slate. Entrances to the south into each room and through the west wall. NC 2001.</p>	POST MEDIEVAL	Farmstead		SN7578753951
9290	Foel Fraith	<p>Abandoned upland farmstead recorded in 1979. Shown as abandoned on 1964 1:10560 OS map. RPS October 2001.</p>		POST MEDIEVAL	Farmstead		SN76615214

9292	Nant Lluest-fach	Farmstead comprising two buildings, The first is aligned NE-SW and consists of two rooms, built of dry-stone walling up to 1.3m thick, delimiting an area measuring 6m x 14m in total. There is much tumble within the building and the entrances open to the NW in each room. The SW end of the house is somewhat damaged. There is a yard to the E of the house with a boundary wall. A second earthwork building lies 11m to the NE and measures c.12m x 6.5m. NC 2001.		POST MEDIEVAL	Dwelling		SN77035147
9293	Pen Y Gurnos	Ruined drystone cottage recorded in 1979. Shown as abandoned on 1964 1:10560 OS map. RPS October 2001.		POST MEDIEVAL	Cottage		SN77075134
9294	Pen Y Gurnos	Ruined drystone cottage recorded in 1979. Shown as abandoned on 1964 1:10560 OS map. RPS October 2001.		POST MEDIEVAL	Cottage		SN77035136
9296	Banc Hendre'r Dail	West-facing low earthwork walls indicate a rectangular building, 9m x 6m, with rounded walls. The site is cut into the hillside of the E side and is well sheltered underneath rocky crags. A pronounced gully is visible around the N, E and S sides. NC 2001.		POST MEDIEVAL	Dwelling		SN79485066

4319 6	Noddfa	A set of earthworks that suggest the presence of at least two buildings. One building is represented by a platform measuring 9.5m x 4.2m, with the second feature possibly defining a long hut, 8.3m x 4.1m, associated with other enclosure banks. NC 2001.		Medieval	Deserted Rural Settlement		SN79195228
4319 7	Banc Hendre'r Dail	Small farmstead comprising a single room, 47m x 6m, with an addition abutting to the S, 4.5m x 6m. An entrance opens to the W and the walls are approx. 0.6m wide. Possible earlier earthwork building apparent beneath and to the S of the extension. An enclosed garden was visible to the W, and also the remains of a trackway. NC 2001.		Medieval;POST MEDIEVAL	Deserted Rural Settlement		SN7948450655
4319 9	Glog	A rectangular dry-stone building located within the NW part of a square enclosure. Both the enclosure and building have entrances to the E. A possible dam is represented by a length of wall outside to the NW. Lines of stones were noticed edging the stream above the site to the NW. NC 2001.		Medieval;POST MEDIEVAL	Deserted Rural Settlement		SN75725451

43200	Nant Y Rhiw	Single-unit long hut, 9m x 5.6m, with stony banks, c.0.5m high, and aligned N-S. An entrance opens to the E. The hut is set into the slope with a drop to a stream to the S and E. SE corner is gradually being eroded. NC 2001.	It is not certain whether or not this site was seen during the Tir Gofal field visit of 29/05/08. A similar single-unit long hut was identified but several details of description and location did not match up and a new record number, PRN 64690, was created to avoid future confusion. W.Steele 2008	Medieval;POST MEDIEVAL	Deserted Rural Settlement		SN75705337
43202	Penpontren	Shown on the tithe map with its own sheep-walk, becoming part of Nant Llwyd. Now possibly destroyed by forest road. NC 2001.		Medieval;POST MEDIEVAL	Deserted Rural Settlement		SN78885288
43204	Dinas	Substantial group of farm buildings still in use in the early 20th century. At the core of the complex is a probable Medieval cruck hall. NC 2001.		Medieval;POST MEDIEVAL	Deserted Rural Settlement		SN76795213
43205	Glog Fach	Site spotted from an aerial oblique photograph awaiting a field visit. NC 2001.	Site spotted from an aerial oblique photograph awaiting a field visit. NC 2001. This remote site was not visited during the Tir Gofal archaeological farm visit of 29/05/08, although possible house platforms were spotted, from a distance, on south-facing slopes within the river valley of the Doethie Fach. W.Steele 2008	Medieval;POST MEDIEVAL	Deserted Rural Settlement		SN758547

4321 4	Nant Llwyd	A possible stone pair, one stone standing, the other recumbent, set in a steep slope on the banks of the Camddwr river. At least one of the stones appears to be a genuine standing stone, earthfast and certainly not a natural feature. The stones lie close to small stream which flows down to the main Camddwr river at the bottom of the slope c.100m away to the N. Fantastic views from the site down the Camddwr valley to the W. The site consists of two huge boulders, the earthfast one measuring some 2m wide at its base and 1.7m high with the large flat face looking E. It is a gritstone with a large number of quartz inclusions. The second stone which lies recumbent may possibly have been standing originally and is of similar size and shape to stone 1. NC 2001.		Bronze Age	Standin g Stone Pair		SN78920529 10
4838 4	Carn Saith- wraig	Group prn for the three barrows at Carn Saith-Wraig, prns 5555, 8527 and 9009. NC 2005.		Bronze Age	Round Barrow Cemete ry		SN77130528 82

4838 5	Blaen Nant- y-rhiw	Group prn for round barrow 8528, white quartz boulder standing stone 9117 and possible conjoined round barrow 9118, all located on an upland plateau, c.600m NW from the barrow cemetery at Carn Saith-Wraig (48384), and 2km to the SE of the Bryn y Gorlan group of monuments (48381). NC 2005.		Bronze Age	Prehisto ric Monum ent Comple x		SN76695342
6332 1	Nant- y- bengl og	Stone rectangular dwelling of 2 units roughly NS with outbuilding/stockyard enclosures of stone to East and earthwork banks around. Paired site. (TA & HJ James 1995).		POST MEDIEV AL	DWELLI NG		SN75925308

6468 9	<p>The site of a possible kiln comprising a circular platform of stones, some 3 metres in diameter, with a rectilinear offshoot of stones, aligned east-west, creating an overall length of approximately 6.5 metres. The whole resembles a 'tennis-racquet' shape, the handle interpreted as the flue or passage-way along which smoke would be drawn to dry the grain raised on a platform within the circular chamber. The feature is located in the grass bank above the Doethie Fach, on the edge of a pasture field, and has distinct edges and good definition. The site was first recorded during the Tir Gofal archaeological farm visit of 29/05/08 and it appears stable and unthreatened, with a location on the stream bank within a pastoral field. W.Steele 2008</p>		POST MEDIEV AL	KILN		SN75645368
-----------	-------------------------------------------------------------------------------------------------------------------------------------------------------------------------------------------------------------------------------------------------------------------------------------------------------------------------------------------------------------------------------------------------------------------------------------------------------------------------------------------------------------------------------------------------------------------------------------------------------------------------------------------------------------------------------------------------------------------------------------------------------------------------------------	--	----------------------	------	--	------------

6469 0		<p>The remains of a probable deserted long hut, dating from the late medieval - post-medieval period. It is located to the northeast of the ford on the Doethie Fach and north of both the trackway and the Nant y rhiw. Lying below a natural rock outcrop, the remains are aligned Northeast-Southwest and comprise a linear, irregular mound of earth and stone under grass. No discernable entrance was noted and the definition of the structure was somewhat indistinct. The site was recorded during a Tir Gofal archaeological farm visit on 29/05/08 and may possibly be the same as PRN 43200, although the description and recorded location of the latter suggests otherwise. W.Steele 2008</p>		POST MEDIEV AL	LONG HUT		SN75605331
-----------	--	-------------------------------------------------------------------------------------------------------------------------------------------------------------------------------------------------------------------------------------------------------------------------------------------------------------------------------------------------------------------------------------------------------------------------------------------------------------------------------------------------------------------------------------------------------------------------------------------------------------------------------------------------------------------------------------------------------------	--	----------------------	-------------	--	------------

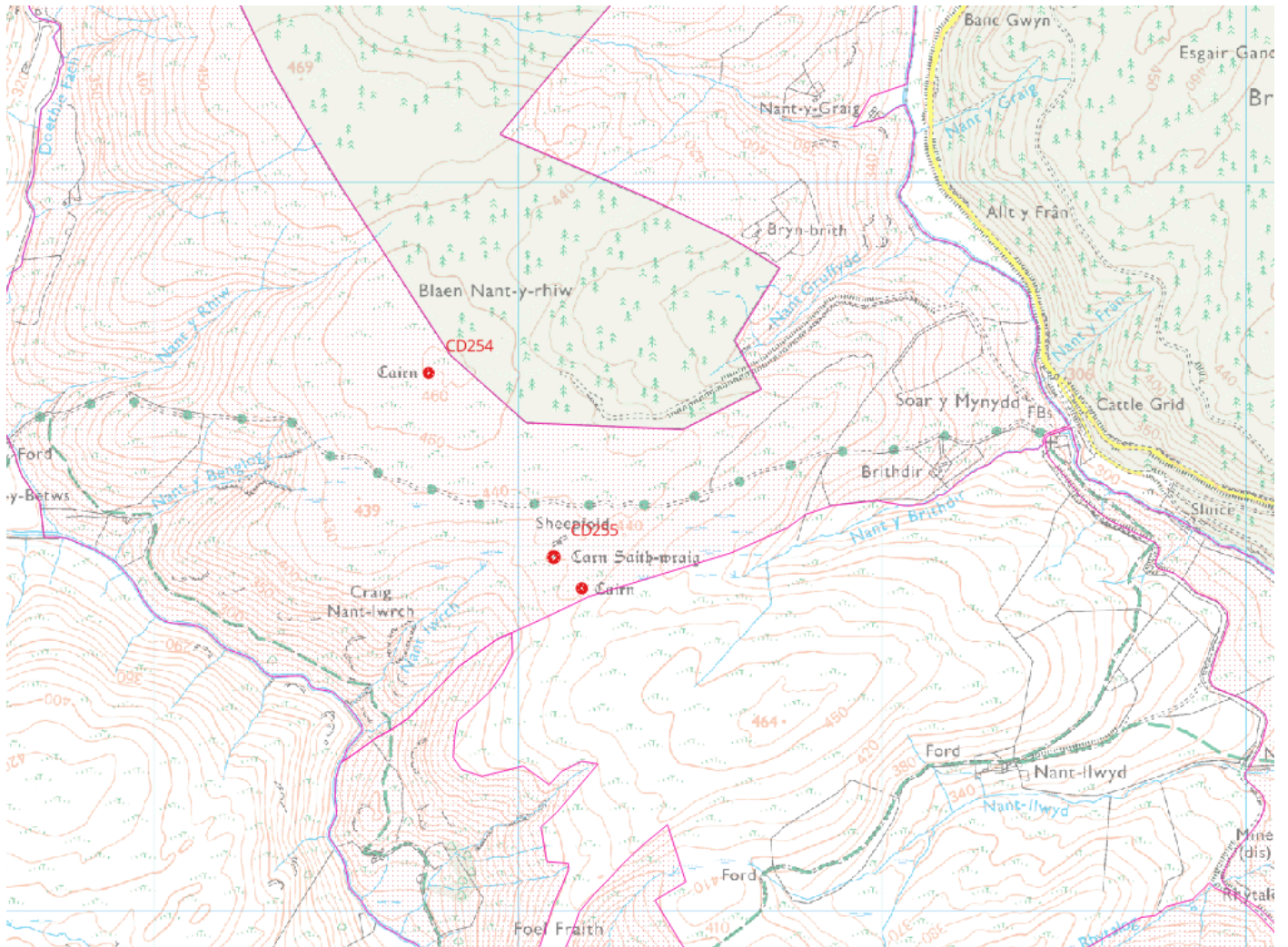
6469 1		Remains of a building aligned north-south and measuring approximately 18.5 x 6.5m. Site appears to comprise three cells, with a hollowed central compartment and banked annexes to north and south. It lies in close proximity to the deserted rural settlement PRN 9112, to the east, and possibly formed part of the same complex. First recorded during the Tir Gofal archaeological farm visit of 29/05/08, close to the northeastern boundary of Blaen Nant-y-rhiw forestry plantation. The site lies within a field under rough pasture and it is grassed over and stable. W.Steele 2008		UNKNO WN	BUILDIN G		SN77625384
9799 6	Rhydt alog Mine	Building recorded within the Rhydtalog lead mine (PRN 9115) on the 1905 1:10,560 Ordnance Survey map. "Agricultural cottage ruin" (RPJ, 1993, Mine no.208, Site no.1). See PRN 9115 for further references.		POST MEDIEV AL	Cottage		SN79115221
9799 7	Rhydt alog Mine	"Slight trace of possible leat" (RPJ, 1993, Mine no.208, Site no.2) recorded during survey of Rhydtalog lead mine (PRN 9115). See PRN 9115 for further references.		POST MEDIEV AL	Leat		SN79085211

9799 8	Rhydtalog Mine	<p>"Rock-cut hollow - probably run-in working" (RPJ, 1993, Mine no. 208, Site no.4) recorded during survey of Rhydtalog lead mine (PRN 9115).</p> <p>Amended following revisiting of site 7.4.2011 when it was noted that labels 3 and 4 on 1993 fieldmap (PRNs 97998, 97999) were transposed (Protheroe-Jones 2011, mine 208, no.2).</p> <p>See PRN 9115 for further references.</p>		POST MEDIEV AL	Level		SN79095211
9799 9	Rhydtalog Mine	<p>"Refuse filled large rock-cut hollow - probably run-in working" (RPJ, 1993, Mine no.208, Site no.3) recorded during survey of Rhydtalog lead mine (PRN 9115).</p> <p>Amended following revisiting of site 7.4.2011 when it was noted that labels 3 and 4 on 1993 fieldmap (PRNs 97998, 97999) were transposed (Protheroe-Jones 2011, mine 208, no.2).</p> <p>See PRN 9115 for further references.</p>		POST MEDIEV AL	Level		SN79115210

9800 0	Rhydtalog Mine	<p>Possible square structure recorded with the Rhydtalog lead mine (PRN 9115) on the 1905 1:10,560 Ordnance Survey map.</p> <p>"Fragmentary remains of a possible magazine" (RPJ, 1993, Mine no.208, Site no.6).</p> <p>See PRN 9115 for further references.</p>		POST MEDIEV AL	Magazine		SN79135211
9800 1	Rhydtalog Mine	<p>"Retaining wall" (Protheroe-Jones 1993, Mine no.208, Site no.9) recorded within Rhydtalog lead mine (PRN 9115).</p> <p>See PRN 9115 for further references.</p>		POST MEDIEV AL	Retaining Wall		SN79135212
9800 2	Rhydtalog Mine	<p>"Horse whim circle with intact pedestal stone at centre" (RPJ, 1993, Mine no.208, Site no.10) recorded within Rhydtalog lead mine (PRN 9115).</p> <p>See PRN 9115 for further references.</p>		POST MEDIEV AL	Horse Whim		SN79145214
9800 3	Rhydtalog Mine	<p>Building recorded within the Rhydtalog lead mine (PRN 9115) on the 1905 1:10,560 Ordnance Survey map.</p> <p>"Ruined mine office" (RPJ, 1993, Mine no.208, Site no.11).</p> <p>See PRN 9115 for further references.</p>		POST MEDIEV AL	Mine Office		SN79125214

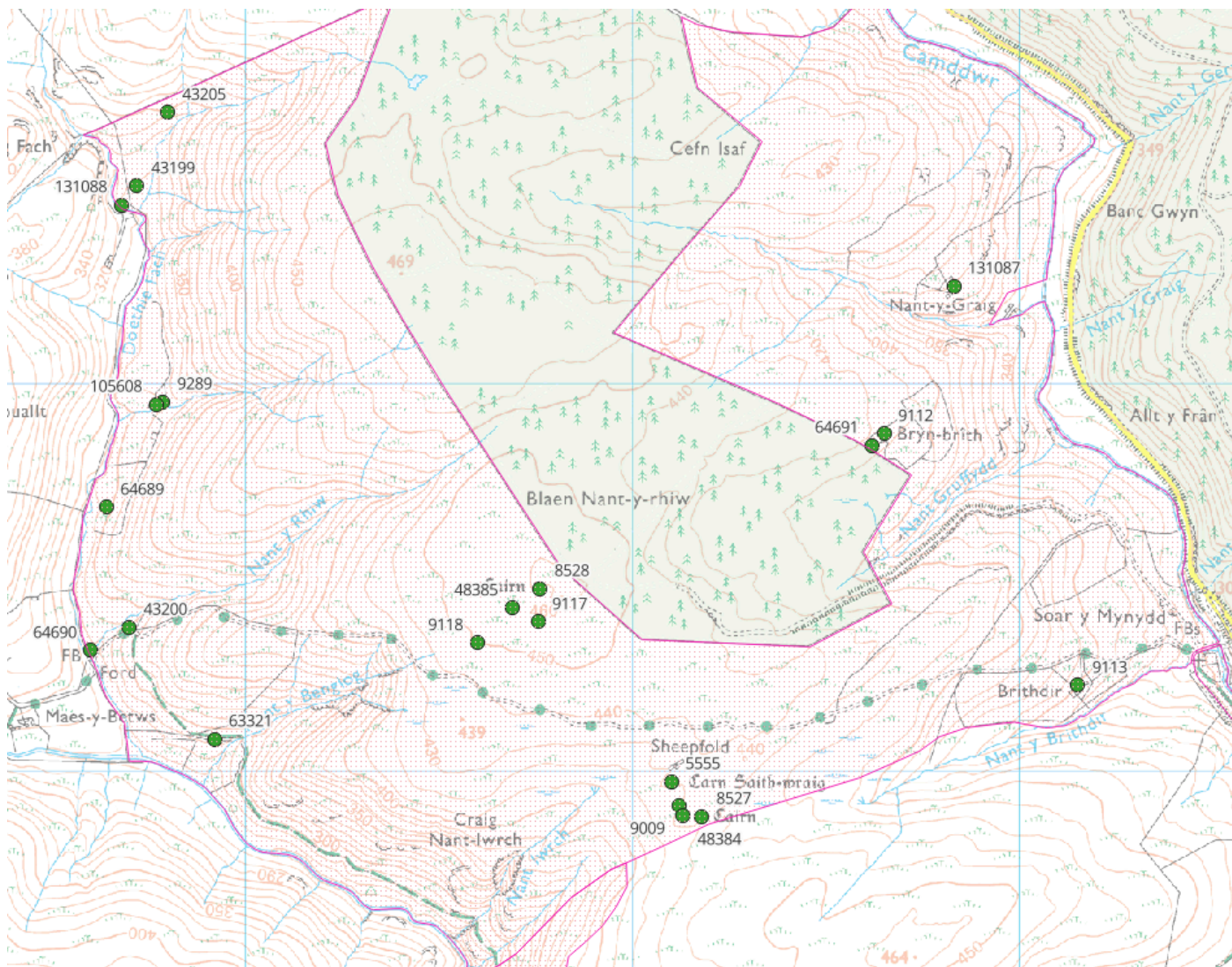
9800 6	Rhydtalog Mine	"Rock-cut level; open, wet" (RPJ, 1993, Mie no.208, Site no.14) recorded within Rhydtalog lead mine (PRN 9115). See PRN 9115 for further references.		POST MEDIEV AL	Level		SN79175216
1004 30	Rhydtalog Mine	A possible magazine recorded during the revisiting of Rhydtalog mine: Vestigial ruin - possible magazine? (c.f. building 6 on 1993 fieldmap) (Protheroe-Jones 2011, mine 208, no. 3). See PRN 9115 for additional references.		POST MEDIEV AL	Explosiv es Store		SN79115205
1212 84	Maenlwyd	A fractured recumbent stone, reported by member of the public. Possible standing stone. J. Smith 2024	Images provided by A. Richards 2023. J. Smith 2024	UNKNO WN	STONE		SN78345145
1213 69	Garreg Wen	White quartz stone in this location, reported by a member of the public. J. Smith 2024	Possible standing stone or boundary marker. J. Smith 2024	UNKNO WN	STONE		SN78365156
1213 70	Foel Fraith	Possible standing/boundary stone, located within a field boundary. Reported by a member of the public. J. Smith 2024	Record from pers comm (email) with A. Richards and F. Sage 2023	UNKNO WN	STONE		SN76675238
1310 87		A single cottage and enclosure recorded on the 2nd ed Ordnance Survey map and clearly visible on LiDAR. A Pyper 2024		MODER N	COTTAG E		SN77835425
1310 88		A subrectangular enclosure recorded on 2nd ed Ordnance		MODER N	STOCK ENCLO SURE		SN75685446

		Survey and LiDAR. A Pyper 2024					
1310 89		A cottage and enclosure identified from LiDAR, A Pyper 2024. Only the outline of the enclosure is visible on the 2nd edition Ordnance Survey map, suggesting it was disused by 1905, A Pyper 2024.		POST MEDIEV AL	COTTAG E		SN76675208
1310 90		A single cell building, probably a deserted rural settlement. A Pyper 2024.	A single cell earthwork and associated boundary/enclosure bank to the northeast identified on LiDAR but not recorded on Ordnance Survey. A Pyper 2024	POST MEDIEV AL	DESERT ED RURAL SETTLE MENT		SN77195098
1310 91		A rectangular terrace cut into a hillside, possible platform for building. Identified from LiDAR. A Pyper		UNKNO WN	PLATFO RM		SN77395144
1310 92		Earthworks of a deserted rural settlement identified from LiDAR and recorded by RCAHMMW. A Pyper 2024		POST MEDIEV AL	DESERT ED RURAL SETTLE MENT		SN77315181



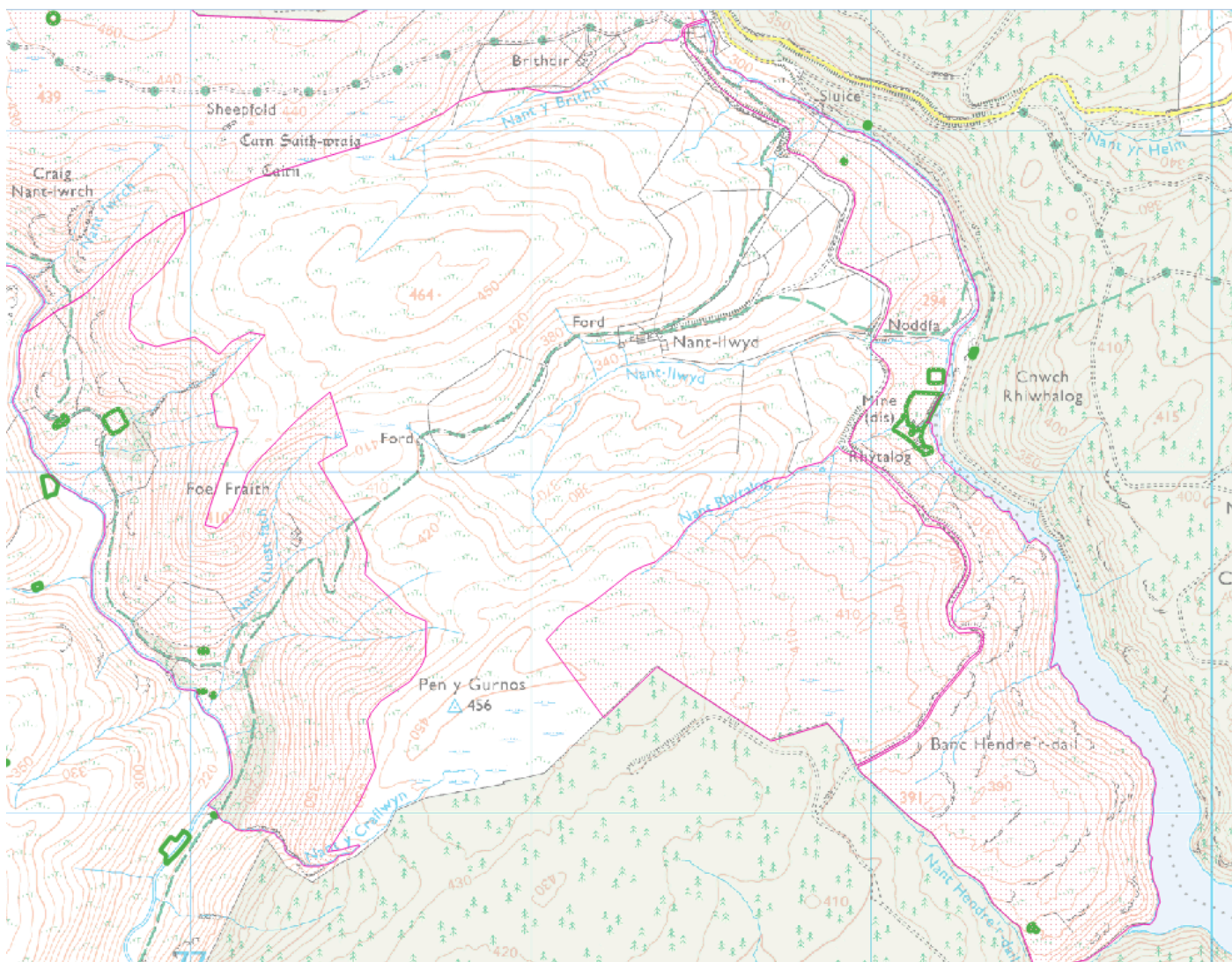
© Crown Copyright. Welsh Government. Licence Number: 100021874 (2024)
 © Hawlfraint y Goron. Llywodraeth Cymru. Rhif Trwydded: 100021874 (2024)

Scheduled Monuments shown in red



© Crown Copyright. Welsh Government. Licence Number: 100021874 (2024)
 © Hawlfraint y Goron. Llywodraeth Cymru. Rhif Trwydded: 100021874 (2024)

Historic Environment Records shown in green (point data only, not full extent of sites)



© Crown Copyright. Welsh Government. Licence Number: 100021874 (2024)
 © Hawlfraint y Goron. Llywodraeth Cymru. Rhif Trwydded: 100021874 (2024)

Historic Environment Feature polygons in green (where extent has been mapped from documentary sources or site visits)