



Joshua Gittins
 Specialist Advisor: Environmental Assessment
 Environmental Assessment Team
 Natural Resources Wales
 Cambria House, Cardiff

DAT file number 15009

8th February 2021

Dear Joshua,

Caron Estate

Thank you for consulting us on the Caron Estate NFM Project. As regional archaeological curators the Heritage Management team at Dyfed Archaeological Trust (DAT-HM) provide information, advice and assistance in understanding, appreciating and managing the historic environment and we welcome the opportunity to provide information at the earliest opportunity to include in your plans.

Dyfed Archaeological Trust holds the regional Historic Environment Record (HER) which contains information on all known sites and artefacts of archaeological and/or historical interest ranging in date from the earliest known human habitation up to the end of the Cold War, in Carmarthenshire, Ceredigion and Pembrokeshire. It also contains information on archaeological work carried out. The HER is a dynamic record and is updated constantly when new information becomes available.

I have reviewed the consultation areas against the HER, scheduled monument data, Coflein (Royal Commission on Ancient and Historical Monuments of Wales), historic mapping and aerial photographs. The results below represent an initial screening of the data readily available within the HER.

Within the consultation area there are 13 scheduled monuments which range from isolated features to clusters of sites such as cairn cemeteries or deserted rural settlements. Works which impact these sites or their setting will need to be done in consultation with Cadw and may need scheduled monument consent.

Scheduled Monuments

SAM-NUMBER	NAME	PERIOD	SITETYPE	Easting	Northing
CD206	Blaen Glasffrwd longhouse	Post Medieval/Modern	Longhouse	277056	262807
CD244	Blaen Camddwr Round Cairn	Prehistoric	Round cairn	275164	258907
CD183	Glasffrwd Holy Well	Post Medieval/Modern	Holy Well	275991	263992
CD177	Fagwyr Las Deserted Rural Settlement	Post Medieval/Modern	Deserted Rural Settlement	275340	259771
CD227	Bryngwyn Bach Round Cairn Cemetery	Prehistoric	Cairn cemetery	272840	262869
CD135	Cairn Cemetery on Esgair Gerwyn	Prehistoric	Cairn cemetery	280202	257356
CD219	Garn Gron Round Cairn Cemetery	Prehistoric	Round cairn	273954	261087
CD138	Blaen Glasffrwd cairn cemetery	Prehistoric	Cairn cemetery	277123	263180
CD243	Nantymaen Standing Stone	Prehistoric	Standing stone	276172	258300

YMDDIRIEDOLAETH
 ARCHAEOLEGOL
 DYFED CYF

The Corner House
 6 Stryd Caerfyrddin
 Llandeilo
 Sir Gaerfyrddin
 SA19 6AE

01558 823121

Ebost
info@dyfedarchaeology.org.uk
 Gwefan
www.archaeologydyfed.org.uk

Cwmni cyfyngedig (1198990)
 ynghyd ag elusen gofrestredig
 (504616) yw'r Ymddiriedolaeth

DYFED
 ARCHAEOLOGICAL
 TRUST LTD

The Corner House
 6 Carmarthen Street
 Llandeilo
 Carmarthenshire
 SA19 6AE

01558 823121

Email
info@dyfedarchaeology.org.uk
 Web
www.dyfedarchaeology.org.uk

The Trust is both a Limited
 Company (1198990) and a
 Registered Charity (504616)



Cadeirydd/Chair
 J Protheroe-Jones

Cyfarwyddwr/Director
 Mr K Murphy BA MCIfA



CD245	Bryn Cosyn Cairn Cemetery	Prehistoric	Round cairn	274344	259495
CD242	Cefncerrig Round Cairn	Prehistoric	Round cairn	276472	258017
CD184	Tir Hir Medieval Platform	Medieval	House platform	275638	263818
CD186	Carn Fflur Round Cairn Cemetery	Prehistoric	Cairn cemetery	274227	262338

There are 163 sites recorded on the HER which I attach as an ESRI Shapefile, and a large number of sites (235) recorded by the Royal Commission on Ancient and Historical Monuments of Wales through their Uplands Survey and shown on Coflein. Recorded sites vary in nature but include prehistoric funerary and ritual sites (cairns and round barrows), medieval and post medieval rural settlement sites including agricultural enclosures and crop storage features and, more unusually, there is also a modern aircraft crash site recorded.

The map below shows some areas with an abundance of recorded sites, and others where records are sparse, however this sparsity may be a reflection of the lack archaeological survey in those areas. Those areas which have been afforested are likely to have lost much of the visible archaeological evidence, though there is still potential for the survival of some sites and landscape features.

In addition the area lies within the Upland Ceredigion Registered Historic Landscape (HLW (D) 2) which has been further characterised into the landscape areas Bryngwyn Bach (HLCA 13), Tywi Forest (HLCA 3), Cambrian Mountains (HLCA 15), Blaen-Glasffrwd (HLCA 132) according to their distinctive historic character.

I hope that this information will help inform the project in its initial stages. We recommend that those areas which are subject to ground intrusive interventions, or have a landscape impact are reviewed. An archaeological desk-based assessment with a walkover survey would provide more detailed advice which might include recommendations for archaeological mitigation where necessary.

We would expect the chosen archaeological contractor(s) to provide an appropriate specification of work produced in accordance with the ClfA standards and guidance which should be approved by the archaeological curator (DAT-HM) prior to the work taking place.

As set out in the NRW WAT MoU, the provision of briefs for undertaking further historic environment work, the review of written scheme of investigations (WSI) produced by an archaeological contractor and the monitoring of works, including final reporting, would be funded by NRW.

Please feel free to contact me if you would like to discuss any of the issues above or if you require further information.

Yours sincerely

Alice Pyper

Alice Pyper
 Project Manager – Heritage Management
 Email: a.pyper@dyfedarchaeology.org.uk
 01558 825993
 Ext 205

YMDDIRIEDOLAETH
 ARCHAEOLEGOL
 DYFED CYF

The Corner House
 6 Stryd Caerfyrddin
 Llandeilo
 Sir Gaerfyrddin
 SA19 6AE

01558 823121

Ebost
info@dyfedarchaeology.org.uk
 Gwefan
www.archaeolegdyfed.org.uk

Cwmni cyfyngedig (1198990)
 ynghyd ag elusen gofrestredig
 (504616) yw'r Ymddiriedolaeth

DYFED
 ARCHAEOLOGICAL
 TRUST LTD

The Corner House
 6 Carmarthen Street
 Llandeilo
 Carmarthenshire
 SA19 6AE

01558 823121

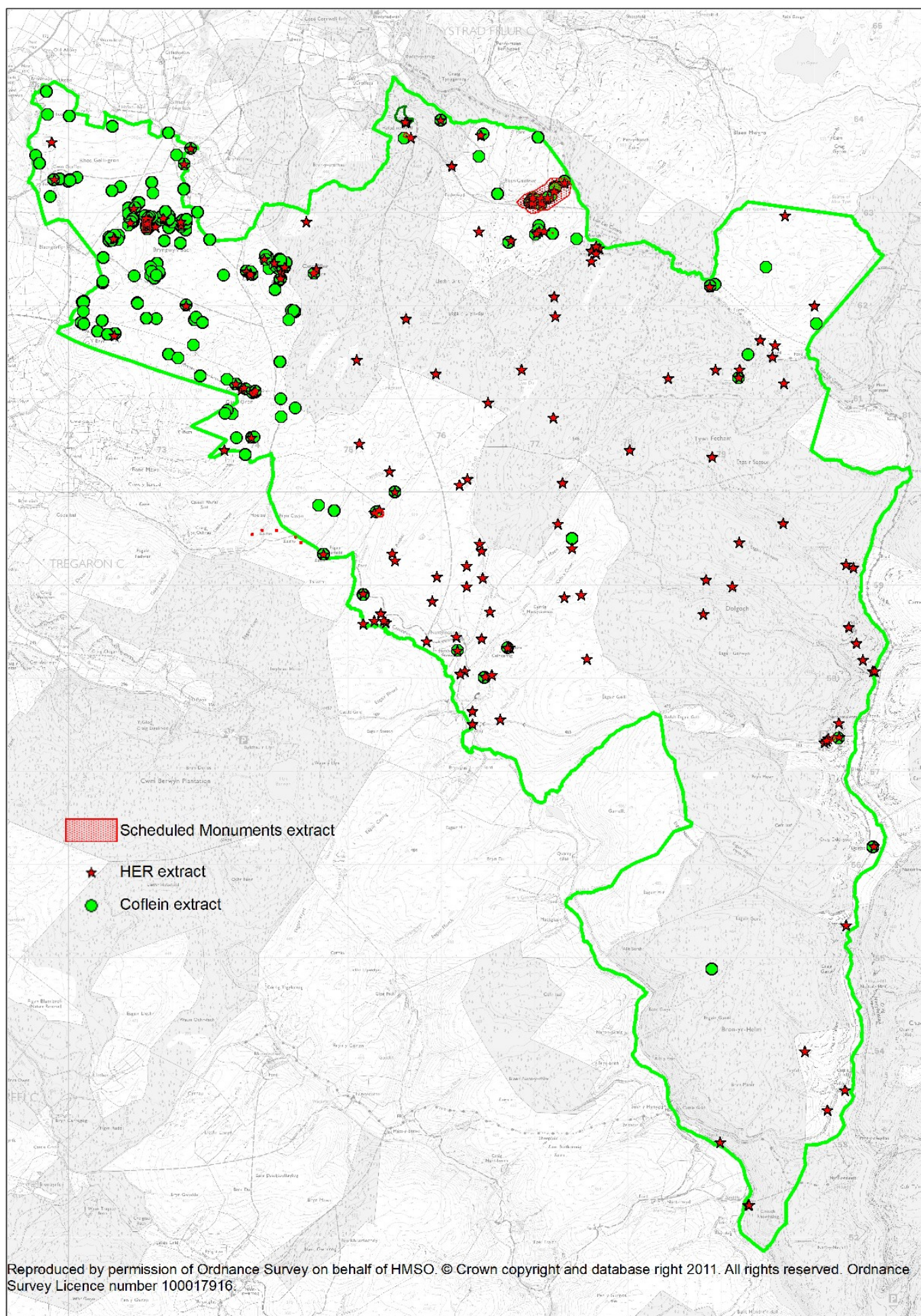
Email
info@dyfedarchaeology.org.uk
 Web
www.dyfedarchaeology.org.uk

The Trust is both a Limited
 Company (1198990) and a
 Registered Charity (504616)



Cadeirydd/Chair
 J Protheroe-Jones

Cyfarwyddwr/Director
 Mr K Murphy BA MCIfA



Reproduced by permission of Ordnance Survey on behalf of HMSO. © Crown copyright and database right 2011. All rights reserved. Ordnance Survey Licence number 100017916.