

## Alice Pyper

---

**From:** Alice Pyper  
**Sent:** 12 July 2024 15:54  
**To:** Humphrey, Ellen  
**Cc:** Louise.Mees@gov.wales  
**Subject:** RE: Allt Y Hebog Heritage Features

Hi Ellen,

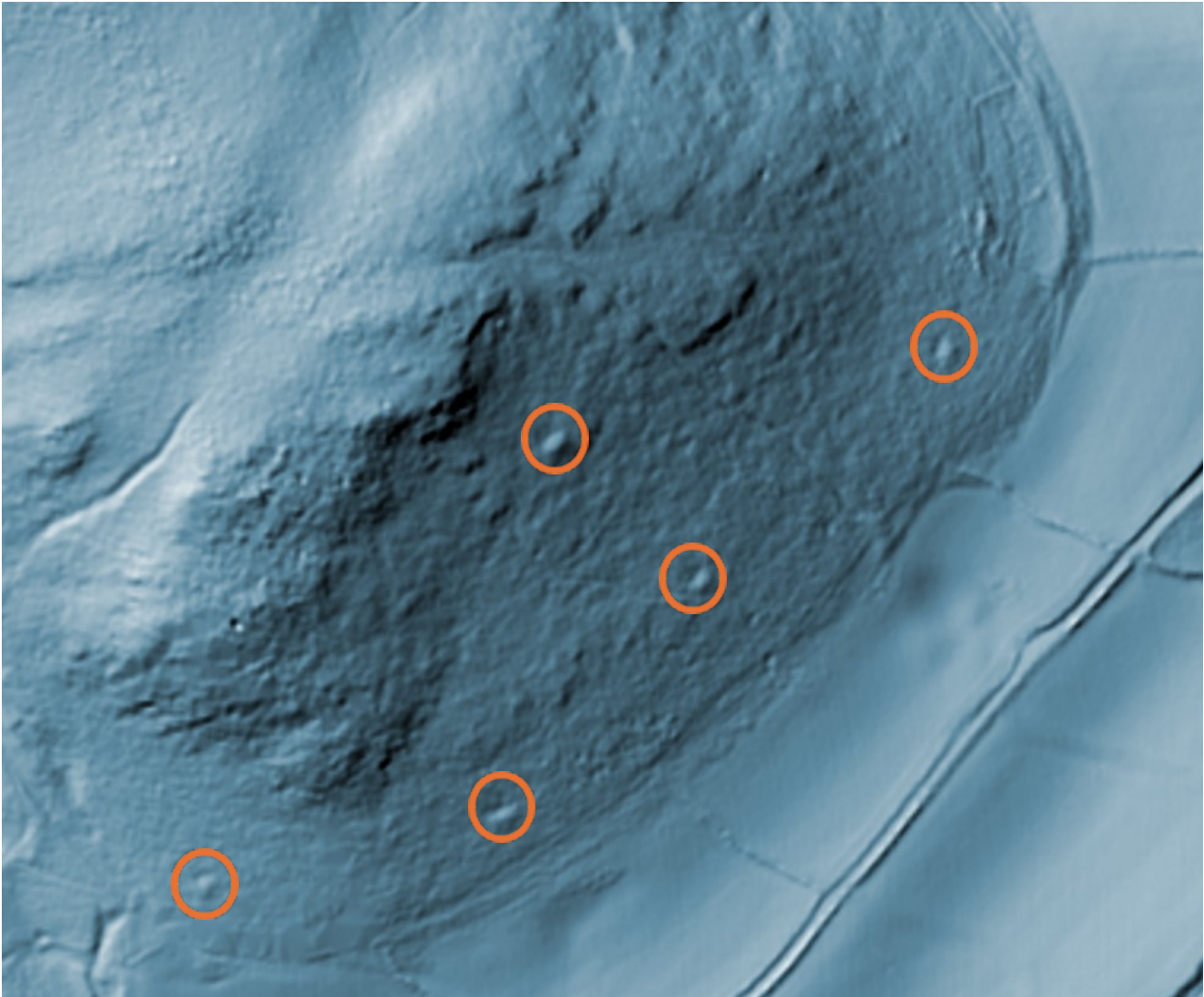
Apologies for the delay getting back to you - must do better!

I've had a look at this, and yes as you mention we have no records for a leat or anything else in the location you've highlighted. It sounds intriguing – would you be able to provide any more info? The highlighted line on your map looks like it goes across the contours which might suggest it that it's something else other than a leat – which tend to go with the contours rather than against. Could it be a trackway up onto the mountain? The historic maps show one following a similar course, see screenshot below.

Regarding the record PRN49252 I can confirm this isn't an accurate location, it's only a 4 figure grid reference.



I have noticed on the LiDAR some earthworks which maybe you could shed some light on – they maybe the lifted tree roots of fallen trees, but I just wonder if they could be charcoal burning platforms? I've tried highlighting them – I hope this works.



If you'd like to send me the proposed course of the new trackway I can screen it for you.  
I hope this helps – again sorry for the late reply,  
Cheers  
Alice

---

**From:** Humphrey, Ellen <ellen.humphrey@cyfoethnaturiolcymru.gov.uk>  
**Sent:** Monday, July 8, 2024 12:35 PM  
**To:** louise.mees@gov.wales; Alice Pyper <A.Pyper@DYFEDARCHAEOLOGY.ORG.UK>  
**Subject:** Allt Y Hebog Heritage Features

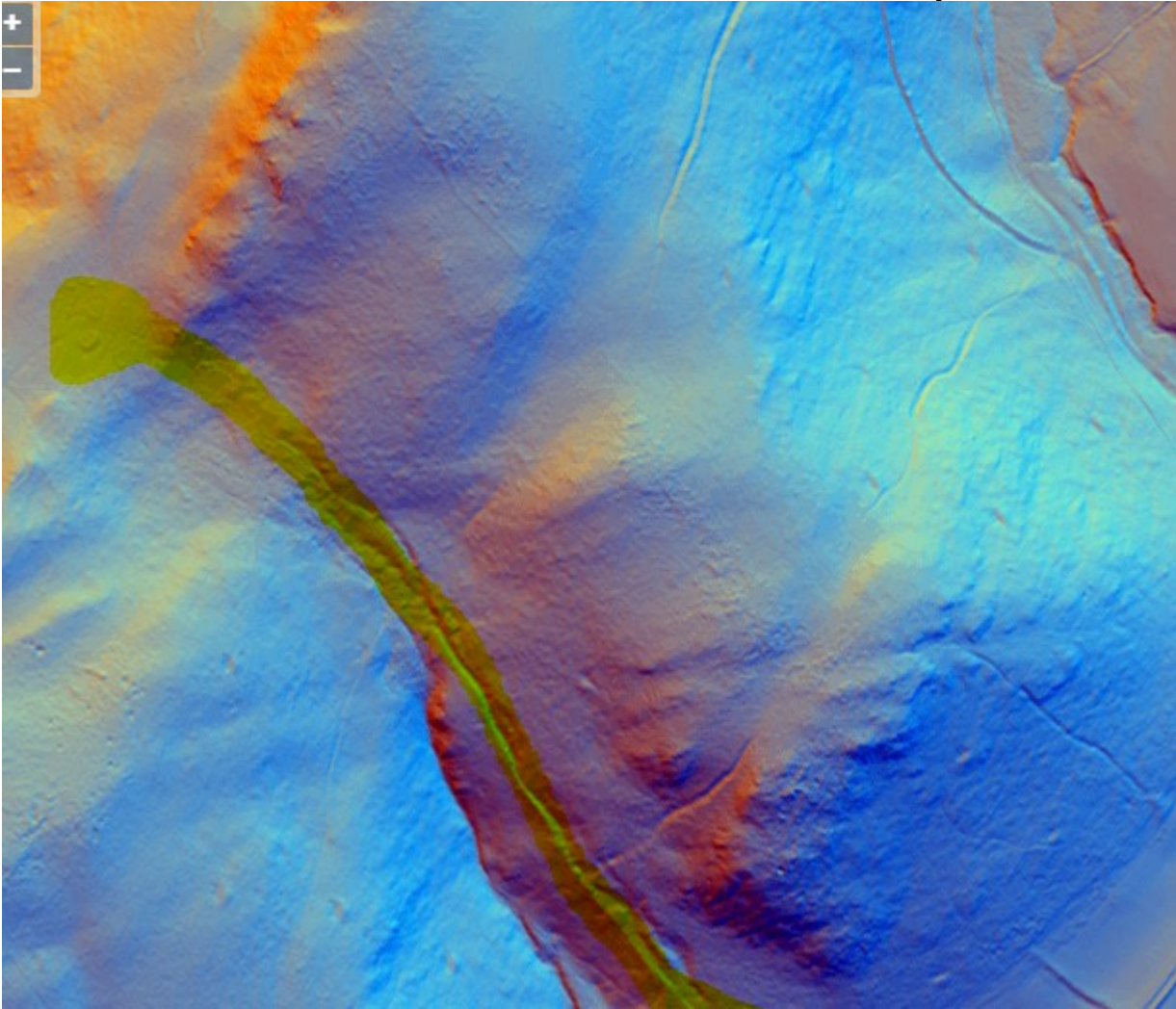
Hi Both,

Please could you help me identify an unidentified earthwork. I was walking up in the Allt Y Hebog block in Cwrt Y Cadno when I came across a leat like feature in the block (please see lidar map below). Approx grid reference OS Grid Ref: SN 6866 4413. I've had a look on Archwilio but couldn't see any mention of it.

This isn't recorded on our system so I mentioned it to mum last week. While I was checking our mapping for it I did see another record which I would like to check the location of with you DAT49252 SN6944 [DAT49252 \(archwilio.org.uk\)](https://archwilio.org.uk). I suspect this hasn't been mapped accurately and I need to confirm the actual location of it as it is currently mapped in a location which is close to where we intend to put a track and extract timber.

Allt Y Hebog has been on the FC/NRW to do list for a number of years and we finally managed to buy a field to get access to it and now we are looking at how we can manage the site. There is

very dead SPHN larch and western hemlock in the block which we need to deal with. The concern is that the Western Hemlock is a threat to the SSSI oak woodland adjacent.



Many thanks,  
Ellen  
Ellen Humphrey

Uwch Swyddog / Senior Officer  
Gweithrediadau Coedwig / Forest Operations  
Cyfoeth Naturiol Cymru / Natural Resources Wales  
Symudol / Mobile: 07812494542  
Llanymddyfri / Llandovery  
Rhagenwau: hi Pronouns: she/ her

**Dysgwr Cymraeg**

Member of The Institute of Chartered Foresters

Yn falch o arwain y ffordd at ddyfodol gwell i Gymru trwy reoli'r amgylchedd ac adnoddau naturiol yn gynaliadwy.

Proud to be leading the way to a better future for Wales by managing the environment and natural resources sustainably.

[cyfoethnaturiol.cymru](http://cyfoethnaturiol.cymru) / [naturalresources.wales](http://naturalresources.wales)

[Twitter](#)

[Facebook](#)

[LinkedIn](#)

[Instagram](#)

**Croesewir gohebiaeth yn Gymraeg a byddwn yn ymateb yn Gymraeg, heb i hynny arwain at oedi.**

**Correspondence in Welsh is welcomed, and we will respond in Welsh without it leading to a delay.**

Flotek Group has scanned and approved this email for your delivery - please note all website links have been replaced with a secure link for your own safety and will be scanned again once clicked.