



### Glastir Woodland Creation: Consent Advice Form

CRN	A0058387
Glastir Farm Name and Scheme Ref.	Blaentwrch EOI 7483950
Parcel No.	SN6748_4380; SN6748_8380, SN6748_1895, SN6848_4985, SN6849_3133, SN6750_4018
NGR	SN778390
Option No.	
Option Name	Enhanced Mixed Woodland
Date last cultivated	
Additional information	
Service Provider	Dyfed Archaeological Trust
Officer	Alice Pyper
HEF UID	310107; 315625; 310031

Decision  
(If the  
proposal is  
considered to  
be  
inappropriate  
at this  
location  
please  
provide an  
explanation)

Thank you for forwarding this Glastir Woodland Creation proposal to us. Dyfed Archaeological Trust have reviewed the new planting proposals for Blaentwrch against the Historic Environment Records database and other readily available record sources, and following a site visit carried out on 11<sup>th</sup> July 2018, has confirmed the following sites should be excluded from planting with a buffer zone of 10 metres;

**PRN 9021      Post Med? Cairnfield SN6746750144  
HEF 310107**

A cairnfield lies on the break of slope above the valley, it includes 10 stone clearance cairns identified by the RCAHMW, ranging from 3.2m in diameter to around 5m in diameter. They lie within an area of around 100 metres from ENE to WSW by 40 metres. A Pyper, 2018, based on site visit and RCAHMW records.

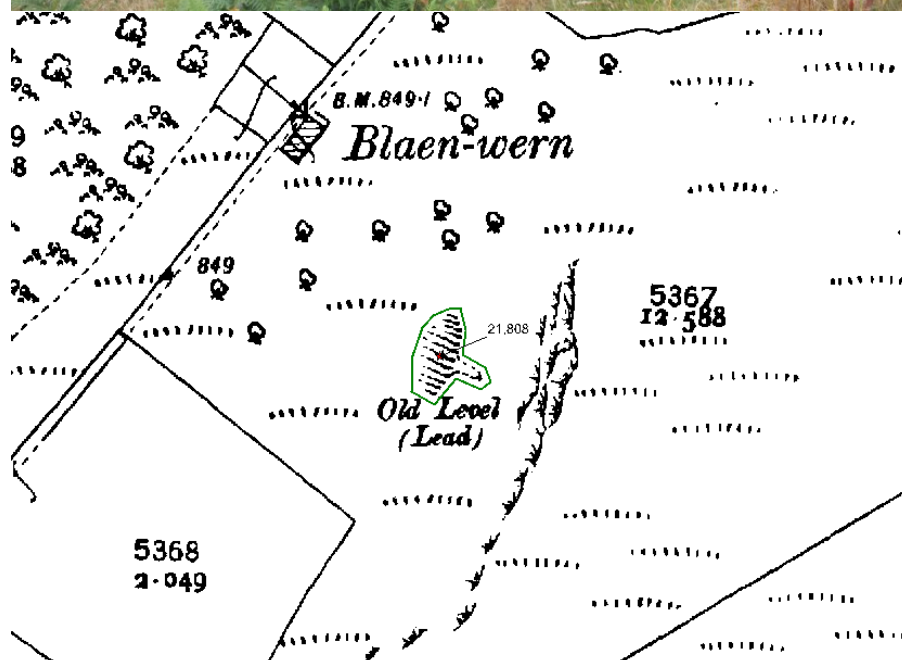


**PRN 9022, Medieval; Post-med, Deserted Rural Settlement SN67545025  
HEF315625**

A complex of possibly related features including a possible long hut (PRN46004). Sited at SN67445017 is a possible sunken shelter or prospecting trench (PRN46005), 30m SW of long hut PRN 9022. A strongly built, U-shaped fold or shelter is at SN67475019. See individual records for further information.

**21808 Post Med Lead Mine SN6793649184  
HEF 310031**

A lead mine located on a slope consisting of a large spoil heap located directly beneath a level approximately 1.3m wide, which has dry-stone built revetted sides. Recorded in 1988 as 'One level, backfilled with rock, small area of spoil. Unable to locate second level.' A Pyper based on site visit and Clouson records. 2018



**46004 Post Med? Long Hut SN67545025  
HEF 315625**

A single-celled structure, probably a long hut although it is relatively narrow internally, c. 2m wide at most. Overall measurement is 8m NE-SW x 4.5m. Has low drystone wall bases, c. 0.3m high. There is a clear drainage gully around the NW end (perhaps suggestive of domestic use). The structure sits on a slight artificial platform. Position of entrance unclear. RPS January 2004. Further stone at the northeast end may indicate an ancillary structure. A Pyper 2018





**PRN 46005      Medieval; Post-medieval      Shelter SN67445017**  
**HEF 310107**

This linear earthwork measures 6m wide x 26m E-W and is c. 0.5m deep. It is reed-filled. It may be a sunken shelter (a sunken floored structure for storing root vegetables) associated with longhut PRN46004 or alternatively a metal mining prospecting trench (there is mining activity to the west, associated with the Llanfair Clydogau mine). RPS January 2004



**PRN 46006      Medieval; Post-medieval      Shelter SN6746950198**  
**HEF 310107**

A strongly built drystone shelter or pen. Walls stand up to 1m high, being well coursed, and up to 1.5m thick. The structure is U-shaped and left open at its NNE end. Possibly associated with the long hut PRN46004 nearby.





**PRN 112277    Post Med? Clearance Cairn    SN6750850153**  
**HEF 310107**

A flat cairn composed of stone collected in a roughly circular heap c 3.5m in diameter.  
Part of cairnfield PRN 9021. A Pyper 2018



**PRN 112278    Post Med? Clearance Cairn    SN6749350147**  
**HEF 310107**

A flat cairn composed of stone collected in a roughly circular heap c 3.2m in diameter.  
Part of cairnfield PRN 9021. A Pyper 2018





**PRN 112279    Post Med? Clearance Cairn    SN6749150139**  
**HEF 310107**

A flat cairn composed of stone collected in a roughly circular heap c 3.2m in diameter.  
Part of cairnfield PRN 9021. A Pyper 2018



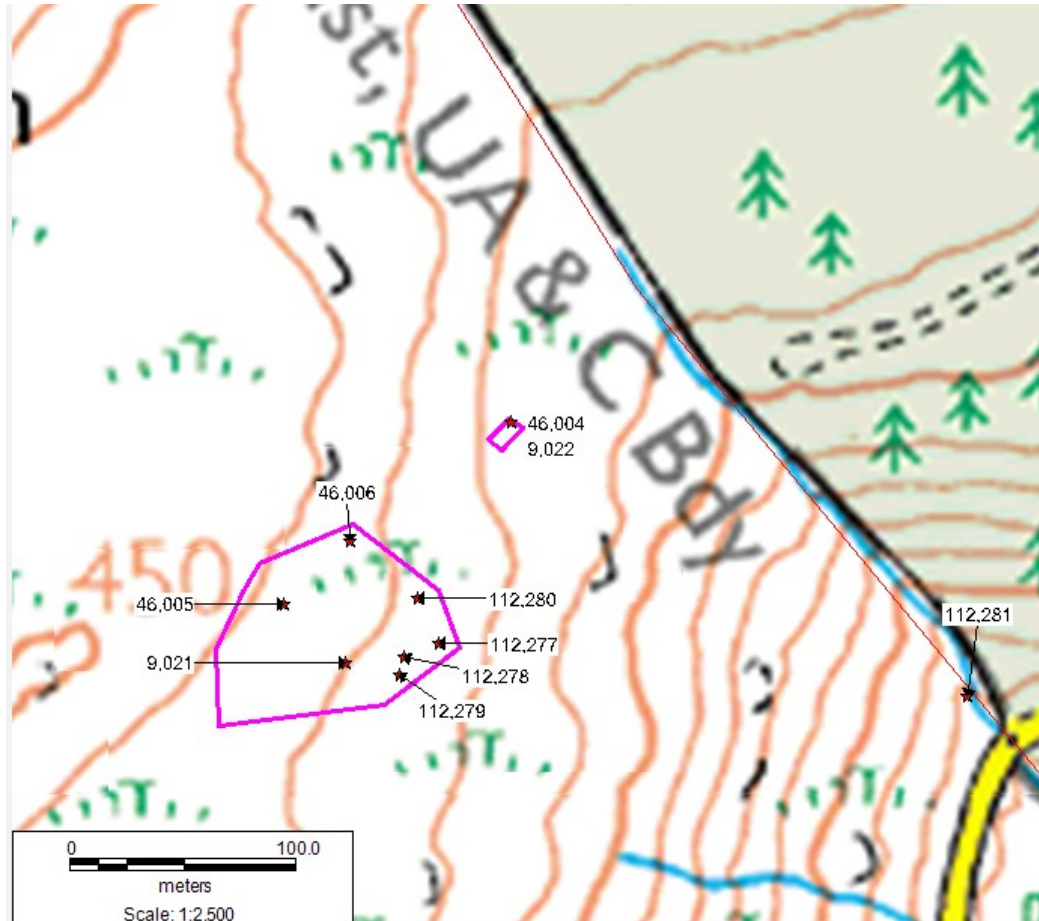
**PRN 112280    Post Med? Clearance Cairn    SN6749950173**  
**HEF 310107**

A flat irregular shaped cairn composed of stone collected in heap c 3m in diameter.  
Part of cairnfield PRN 9021. A Pyper 2018



**PRN 112281 Post Med Adit SN67725013**

An adit is recorded beside the stream, and likely relates to the recorded Blaen Twrch Lead Mine (PRN 26642). A Pyper based on RCAHMW records and the Cambrian Mountain Metal Mine project. A Pyper 2018.



Further  
Assessment  
Required?

N

**Date  
received**

13<sup>th</sup> May 2018

**Date replied**

20<sup>th</sup> July 2018