

# Archaeological Photographic Survey

## Caple Carmel, Llanfynydd, Carmarthen SA32 7UE

### Introduction

This survey has been undertaken as required by Condition 1 of Planning Approval E/39390.

Capel Carmel was built in 1850, enlarged in 1875 and re-built in 1908. Since the 1950's it has been used as a shelter for farm animals from the nearby Fferm Pantyefail from whom the current owner acquired the property.

### Location



## **Description**

NPRN 6498

Map Reference ~ SN52NE

Grid Reference ~ SN58152916

Unitary (Local) Authority ~ Caerfyrddin/Carmarthenshire

Community ~ Llanfynydd (Caerfyrddin/Carmarthenshire)

Type of Site ~ CAPEL/CHAPEL

Broad Class ~ RELIGIOUS RITUAL AND FUNERARY

Period ~ Post Medieval

## **INDEX OF IMAGES**

EXTERNAL VIEWS OF CHAPEL in clockwise direction as approach Chapel from gateway from lane

INTERNAL VIEWS OF CHAPEL in clockwise direction from North East Door

CHAPEL SURROUNDS



**EXTERNAL VIEWS-ROADSIDE ELEVATIONS- South East**



**Image Ref: SE 01**





Image Ref: SE 02





Image Ref: SE 03





Image Ref: SE 04





Image Ref: SE 05





Image Ref: SE 06





Image Ref: SE 07





Image Ref: SE 08



## SOUTH WEST GABLE



Image Ref: SW 01





Image Ref: SW 02



**NORTH WEST ELEVATION**



**Image Ref: NW 01a + NW 01b**





Image Ref: NW 02





Image Ref: NW 03 a



Image Ref: NW 03 b





Image Ref: NW 04





Image Ref: NW 05









Image Ref: NE 02





Image Ref: NE 03



## INTERNAL VIEWS



Image Ref 1





Image Ref 2





Image Ref 3a





Image Ref 3b





Image Ref 4





Image Ref 5





Image Ref 6





Image Ref 7





Image Ref 8





Image Ref C1





Image Ref C2





Image Ref C3



## MINISTERS ROOM



Image Ref M1





Image Ref M2





Image Ref M3





Image Ref M4





Image Ref M5





**Image Ref B1**





Image Ref B2





Image Ref B3





Image Ref B4





Image Ref B5





Image Ref B6





Image Ref B7



## EXTERNAL VIEWS



View of Y Capel from South





View of Y Capel as approach from South West





View of Y Capel and view looking south west





View of Y Capel and view looking south west





View of Y Capel and view looking south east





View of Y Capel and view looking south west





View of Y Capel and view looking south east





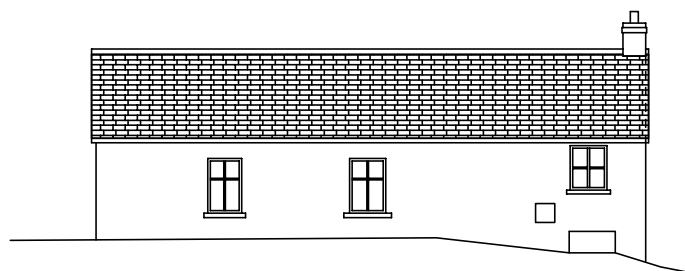
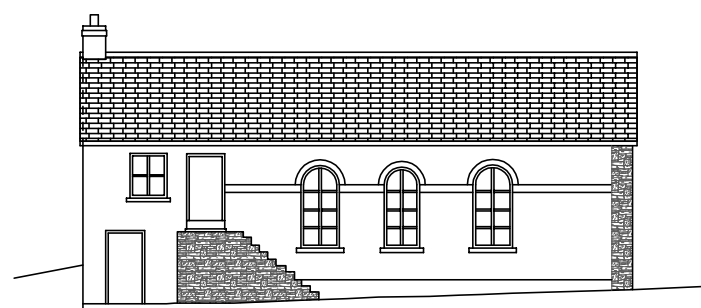
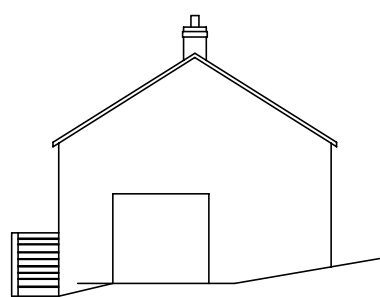
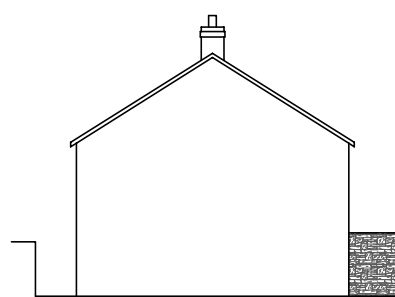
View of Y Capel and view looking south east



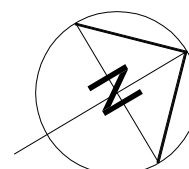
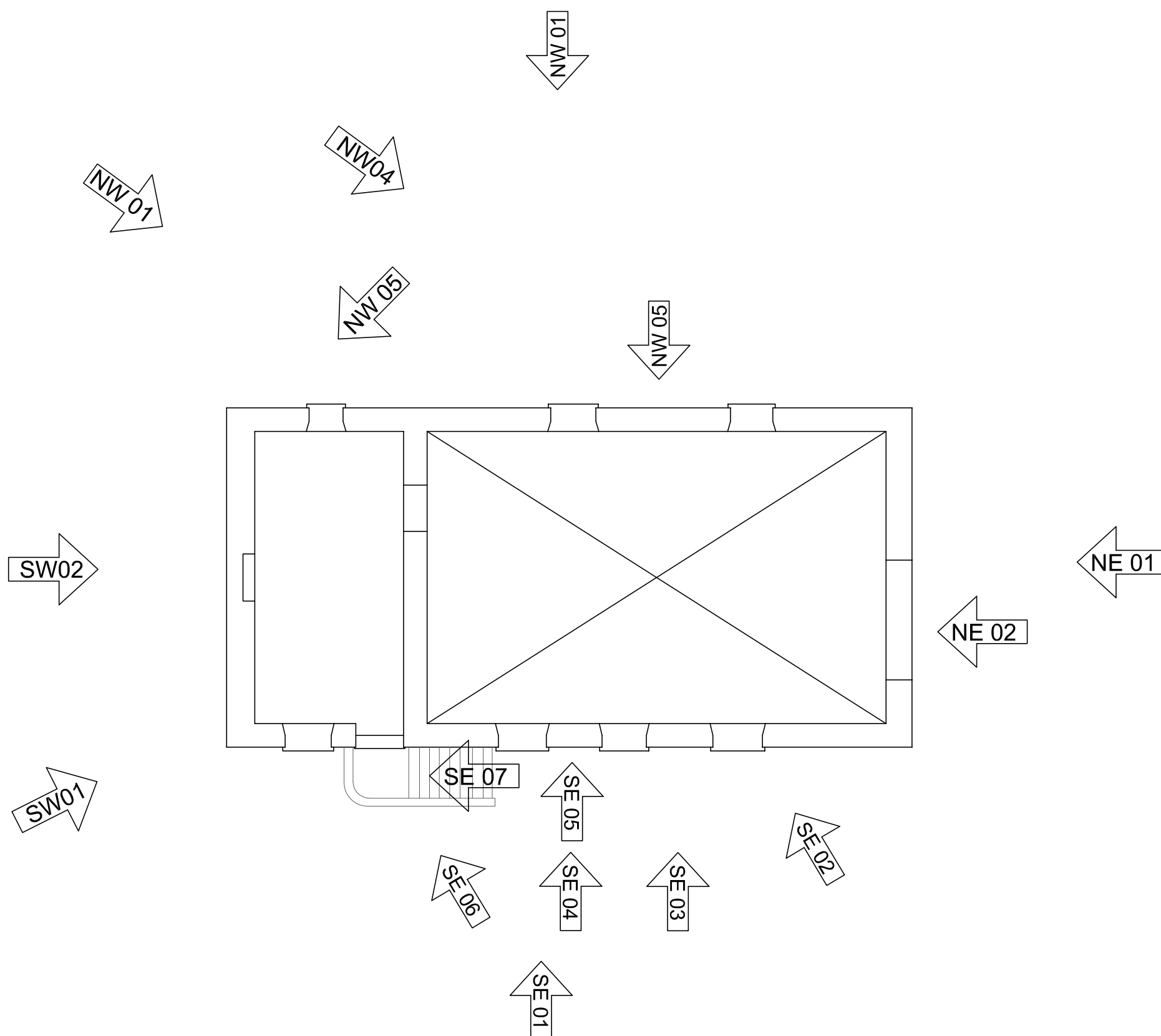


View looking south west



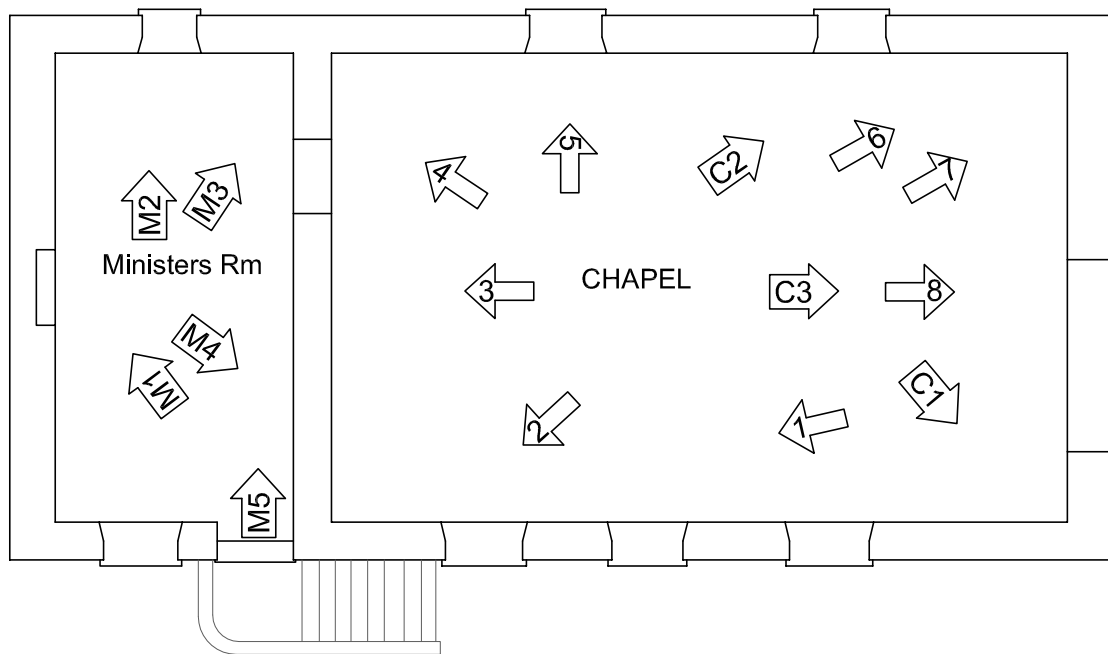


## EXISTING ELEVATIONS 1:200

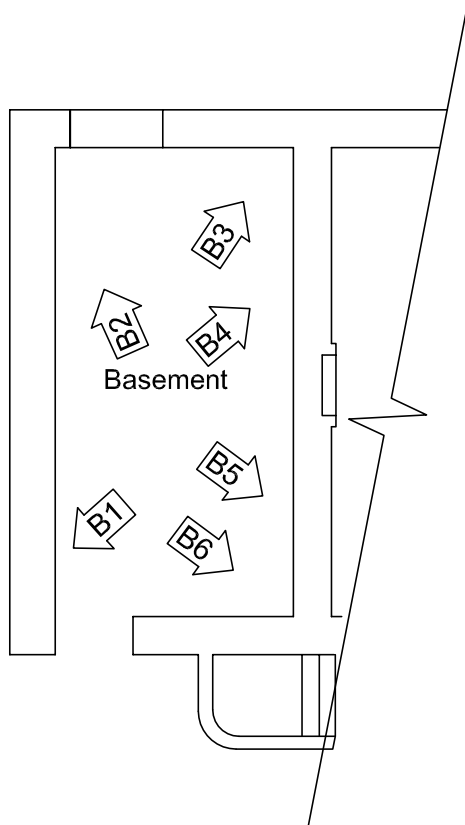


Existing Plans & Elevations Showing Photo Locations  
CAPEL CARMEL, North of Pantyrefail Farm  
LLANFYNYDD, CARMARTHENSHIRE, SA32 7UE





FIRST FLOOR PLAN 1:100



BASEMENT FLOOR PLAN 1:100

Existing Plans Showing Internal Photo Locations  
 CAPEL CARMEL, North of Pantyrefail Farm  
 LLANFYNYDD, CARMARTHENSHIRE, SA32 7UE





LOCATION PLAN 1:1250 at A4  
CAPEL CARMEL, , North of Pantyrefail Farm  
LLANFYNYDD, CARMARTHENSHIRE, SA32 7UE