

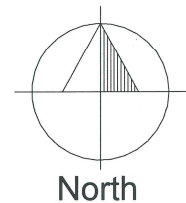
Stephen L Thomas

Llangain Designs

12 Dol Y Dderwen, Llangain, Carmarthen. SA33 5BE
Tel: 01267 241759 Email: llangaindesigns@aol.com

Existing Photographic Survey of Existing Stables @ Garness Farm, Marros Pendine Carmarthenshire SA33 4PN

Designed using Autodesk Revit Licensed to Llangain Designs



Stables @ Garness Farm

Aerial View

Stephen L Thomas
12 Dol y Dderwen
Llangain
Carmarthen
SA33 5BE
t: 01267 241759
e: llangaindesigns@aol.com

Llangain Designs

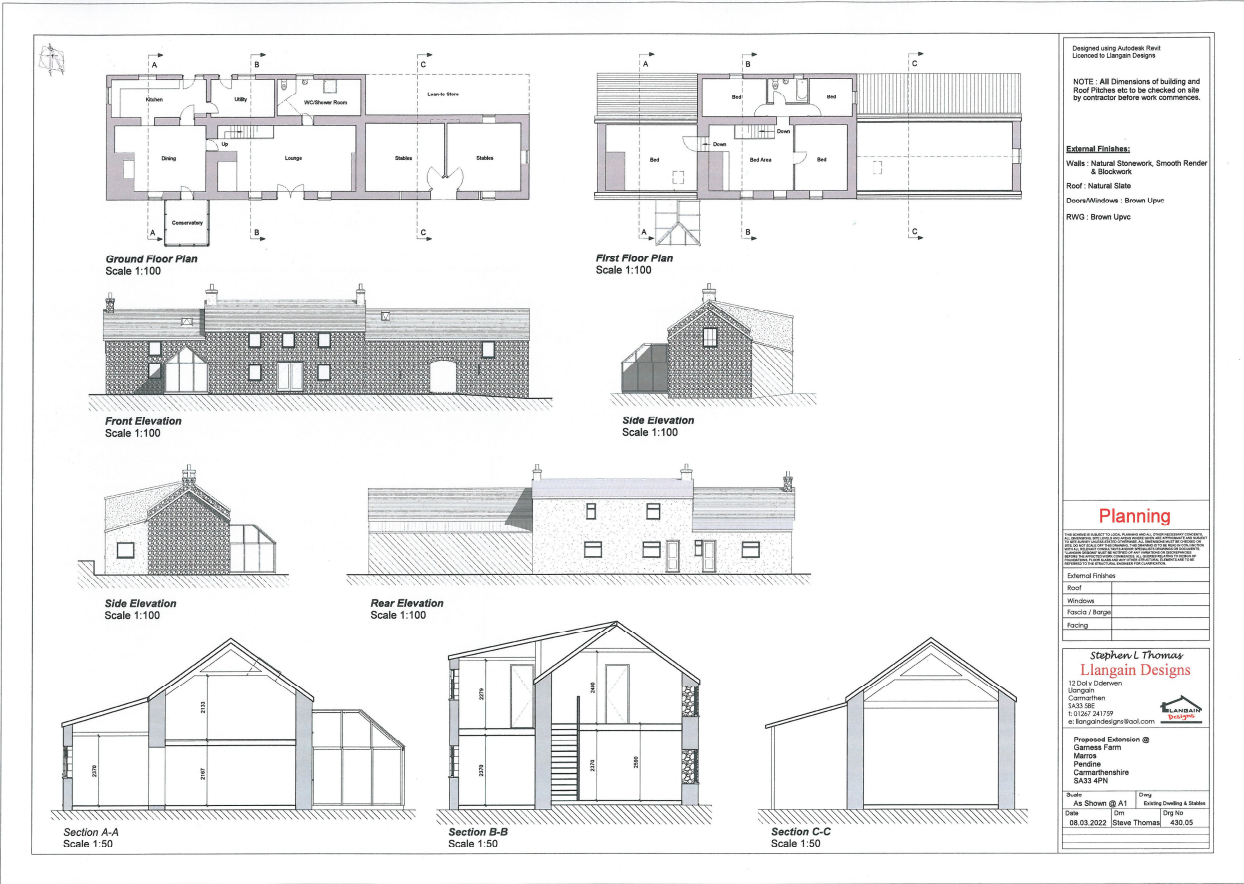
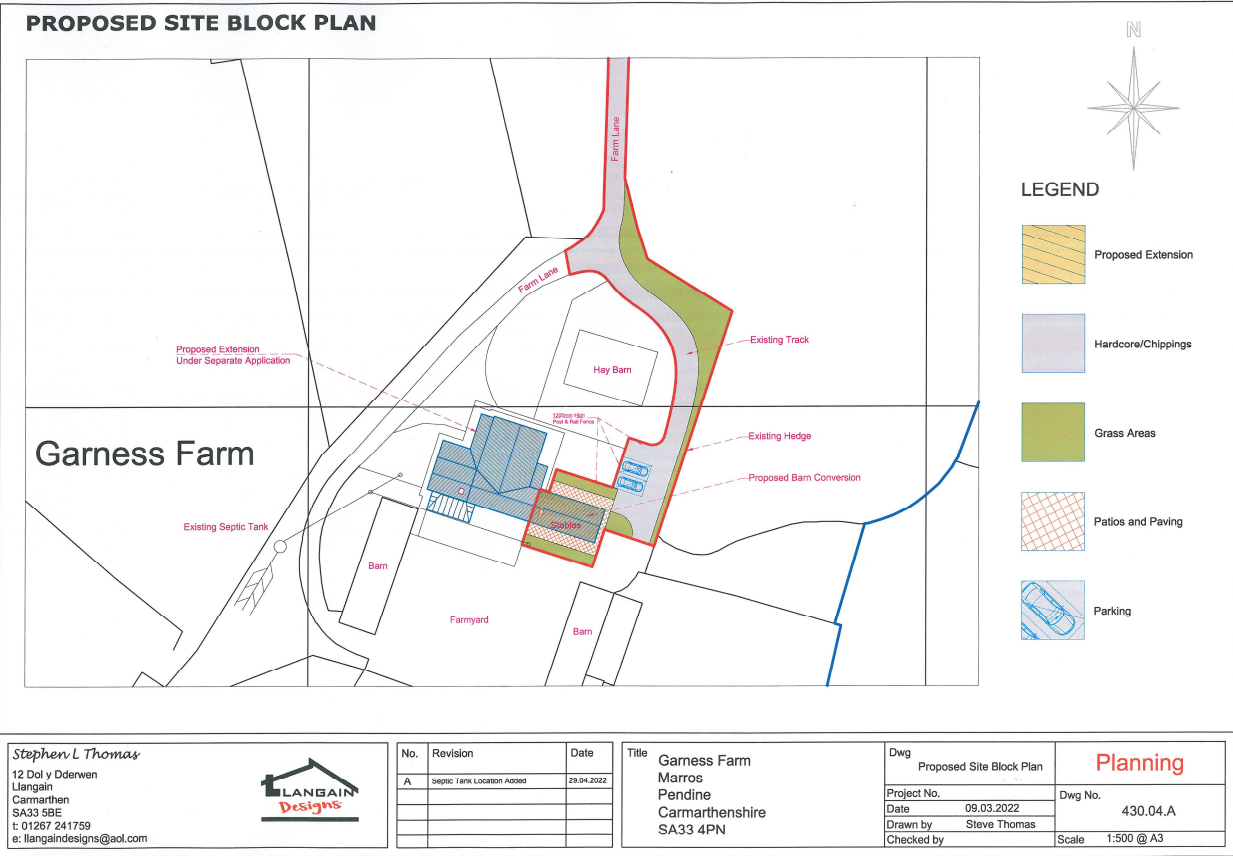


No.	Description	Date

Title Proposed @
Garness Farm
Marros
Pendine
Carmarthenshire
SA33 4PN

Dwg		Aerial view	
Date	23.06.2022	Dwg No.	Job No - 430
Drawn by	Steve Thomas	Scale	Not To Scale
Checked by			

Architectural Survey & Planning Plans



Elevation Photos

South Elevation – Summer and Winter Views



East Elevation – Summer & Winter Views



North Elevation



Doors & Window Photos

South Elevation Stables Door – 1780m Wide x 2100m



South Elevation - Window 0.9m x 0.9m and blocked up doorway 1.0m x 2.0m and Arrow Slit 0.1m x 0.6m



South Elevation - Stable Door and Arrow Slit



South Elevation Roof light



Internal Photos

Looking Towards East Gable window 1.12m x 1.3m



Looking Towards East Gable



Internal View of Window 0.9m x 0.9m on South Elevation



Internal View of Window 0.9m x 0.9m on North Elevation



Internal Blocked up doorway Looking North



Roof Structure – Looking West



Photographic Record Undertaken on 22.06.2022

