

## Photographic Recording

**PL/06450 Seion Chapel, Tenby Road, St Clears**

## Photographic Recording

**Project 2403**



**LANDSKER**  
**Archaeology**

[www.landskerarchaeology.co.uk](http://www.landskerarchaeology.co.uk)

**PL/06450 Seion Chapel, Tenby Road, St Clears**

**Photographic Recording**

**Landsker Archaeology P2403**

**Contents**

<b>1. Summary.....</b>	<b>1</b>
<b>2. Introduction.....</b>	<b>1</b>
<b>3. Project Methodology .....</b>	<b>1</b>
<b>4. Features .....</b>	<b>1</b>
<b>5. Illustrations .....</b>	<b>4</b>
Figure 1 Seion Chapel external views and feature locations. Not to Scale. ....	4
Figure 2 Chapel and Vestry, view to east.(14, 15, 23, 24, 34, 35, 46, 47).....	4
Figure 3 Chapel and Vestry, view to east. ( 14, 15, 23, 24, 28, 32, 33, 34, 46, 47, 49,).....	5
Figure 4 Chapel and Vestry View to southeast. (13, 14, 15, 20, 21, 22, 23, 24, 27, 28, 31, 32, 33, 46, 47, 49) .....	5
Figure 5 Vestry, view to south. (15, 24, 28, 31, 32, 33, 47) .....	6
Figure 6 Chapel and Vestibule, view to east. (13, 20, 21, 22, 25, 27, 45, 49, 50).....	7
Figure 7 Chapel and Vestibule, view to southwest. (10, 11, 12, 18, 19, 20, 21, 22, 26, 44, 45, 49, 50) .....	7
Figure 8 Chapel and Vestry, view to south. (12, 13, 20, 21, 22, 25, 28, 32, 33, 45, 47, 48, 49, 50) .....	8
Figure 9 Chapel and Vestry, view to southeast. (13, 14, 15, 20, 21, 22, 23, 24, 25, 27, 28, 31, 32, 33, 45, 46, 47, 48, 49, 50) .....	8
Figure 10 Chapel and Vestry, view to southeast. (27, 28, 32, 33, 34, 45, 46, 47, 48, 49, 50)...	9
Figure 11 Chapel and Vestry, view to southeast. (13, 14, 15, 20, 21, 22, 23, 24, 25, 28, 31, 32, 33, 45, 46, 47, 48, 49, 50) .....	9
Figure 12 Chapel and Vestibule, view to southwest. (12, 25, 26, 45) .....	10
Figure 13 Vestry, view to south. (28, 31, 32) .....	10
Figure 14 Chapel and Vestry, view to southeast. (14, 15, 23, 24, 27, 28, 31, 32, 33, 34, 46, 47, 48, 49) .....	11
Figure 15 Chapel and Vestibule door, view to east. (13, 20, 21, 22, 27, 49).....	11
Figure 16 Chapel, view to south. (12, 13, 20, 21, 22, 25, 28, 32, 33, 45, 47, 48, 49, 50) .....	12
Figure 17 Chapel and Vestry, view to south. (13, 14, 15, 20, 21, 22, 23, 24, 25, 27, 28, 32, 33, 46, 47, 48, 49, 50) .....	12
Figure 18 Chapel, view to south. (12, 13, 20, 21, 22, 25, 44, 45, 47, 48, 49, 50) .....	13
Figure 19 Chapel, view to south. (12, 13, 20, 21, 22, 25, 26, 44, 45, 47, 48, 49, 50) .....	13
Figure 20 Chapel, view to southwest. (10, 11, 12, 18, 19, 20, 21, 22, 25, 26, 45, 47, 48, 49, 50) .....	14
Figure 21 Inscribed slate. (44) .....	14
Figure 22 Date stone (45) .....	15
Figure 23 Gravestone (46) .....	15
Figure 24 Rear of chapel, view to north. (16, 17, 47).....	16
Figure 25 Rear of chapel, view to north. (16, 17).....	16
Figure 26 Rear of chapel, view to east. (17) .....	17
Figure 27 Rear of Chapel, washroom and Vestry, view to west.....	17
Figure 28 Chapel, view to northwest. (18, 47) .....	17

Figure 29 Chapel, view to west. (19, 47).....	18
Figure 30 Chapel, view to north. (11, 18, 47).....	18
Figure 31 Seion Chapel, internal plan and feature location. Not to Scale.....	19
Figure 32 Hall view to north from pulpit. (4, 5, 7, 9, 12, 13, 22, 23, 39, 40, 41).....	20
Figure 33 Hall from balcony to pulpit, view to south. (6, 8, 16, 17, 39, 42, 43).....	20
Figure 34 Hall to pulpit, view to south. (6, 16, 17, 39, 42, 43) .....	21
Figure 35 Hall, balcony to hall, view to southwest. (40, 41, 42, 43).....	21
Figure 36 Hall, to pulpit, view to southeast. (16, 17, 40, 41, 42, 43) .....	22
Figure 37 Hall towards Vestry, view to southwest. (29, 34, 41) .....	22
Figure 38 Hall towards pulpit, view to east. (6, 39, 40, 41, 42, 43) .....	23
Figure 39 Hall, east side, view to north. (4, 5, 7, 10, 11, 39, 40, 42).....	23
Figure 40 Hall towards vestibule, view to northwest. (5, 14, 37, 40, 41).....	24
Figure 41 Hall, balcony towards pulpit, view to south. (6, 8, 16, 17, 39, 40, 41, 42, 43) .....	24
Figure 42 Pulpit, view to southwest. (8, 16, 42, 43).....	25
Figure 43 Pulpit, view to southeast. (6, 17, 39, 43).....	25
Figure 44 Hall, balcony, view to northeast. (4, 6, 7, 18, 19, 20, 39) .....	25
Figure 45 Hall, balcony, view to west. (7, 8, 9, 23, 24, 41).....	26
Figure 46 Hall, balcony, view to southwest. (8, 16, 17, 23, 24, 43).....	26
Figure 47 Hall balcony, view to south. (6, 7, 8, 16, 17, 19, 24, 42, 43) .....	27
Figure 48 Hall balcony, view to southeast. (6, 8, 16, 17, 19, 39, 42, 43).....	27
Figure 49 Hall balcony, view to east. (6, 7, 17, 39, 40, 42, 43).....	28
Figure 50 Hall balcony, view to north. (4, 5, 6, 7, 8, 9, 18, 20, 22, 23, 24, 39, 40, 42, 43).....	28
Figure 51 Hall balcony, view to east. (6, 10, 16, 17, 39, 40, 42, 43).....	29
Figure 52 Hall stained glass window, view to south. (16).....	29
Figure 53 Hall balcony, view to south. (5, 6, 7, 8, 13, 14, 15, 20, 22, 23, 24, 40, 41) .....	30
Figure 54 Hall balcony, view to north. (4, 7, 9, 18, 20).....	30
Figure 55 Hall organ, view to east. (7, 9, 18) .....	31
Figure 56 Hall balcony organ, view to north. (7, 9) .....	31
Figure 57 Hall balcony, view to south. (6, 17, 19, 42, 43) .....	32
Figure 58 Hall balcony, view to north. (4, 5, 6, 7, 8, 9, 18, 19, 20, 22, 23, 40, 41).....	32
Figure 59 Vestibule, view to southeast. (37) .....	33
Figure 60 Vestibule, view to west. (25, 27, 38).....	33
Figure 61 Vestibule, view to northeast. (25, 26, 37).....	34
Figure 62 Vestibule, view to east. (26, 37) .....	34
Figure 63 Vestry, view to north. (28, 29, 31, 32) .....	35
Figure 64 Vestry, view to northeast. (28, 29, 31, 32, 41) .....	35
Figure 65 Vestry ceiling, view to north. (28, 31, 33).....	36
Figure 66 Vestry, photograph. ....	36
Figure 67 Vestry, view to east. (10, 29, 30, 31, 36).....	37
Figure 68 Vestry, view to northwest. (32, 34, 35) .....	37

Frontispiece: Seion Chapel, view to south.

## PL/06450 Seion Chapel, Tenby Road, St Clears

### Photographic Recording

David Maynard BA MSc MCIfA

#### 1. Summary

*Ymgwymerwyd â chofnod ffotograffig o du mewn a thu allan Capel Seion ym mis Ionawr 2024. Roedd hyn cyn gwneud newidiadau i'r adeilad ar gyfer newid defnydd y strwythur. Cafodd nodweddion unigol yr adeilad eu rhifo a'u dangos ar gyfres gynrychioliadol o ffotograffau a gynhwysir yn yr adroddiad hwn.*

*A photographic record of the interior and exterior of Seion Chapel was undertaken in January 2024. This was in advance of building alterations for a change of use of the structure. Individual features of the building were numbered and shown on a representative series of photographs contained in this report.*

#### 2. Introduction

Landsker Archaeology Ltd was commissioned by Karl Evans of Mansions of Mystery Escape Rooms to conduct a photographic recording survey of Seion Chapel in accordance with planning permission requirements prior to commencing work. The chapel is located on Tenby Road, St Clears, Carmarthen (NGR SN27667 16281).

#### 3. Project Methodology

The survey was conducted on 11 and 12 January, 2024, using a Sony A7m4 camera with 20mm lens and a Python 4 Pro Plus drone. A total of 524 internal photographs, 578 external photographs, and 256 drone photographs were captured. These images were utilized to generate a 3D model of the chapel using Agisoft Metashape. Certain parts of the model were then used to create a plan and elevations to demonstrate the location of the identified features in the study (Figures 1 and 31). The figure captions for the illustrations indicate the visible features, allowing them to be cross-referenced.

The project number is Landsker Archaeology P2403. The full digital record is stored at the company offices and can be made available if required.

#### 4. Features

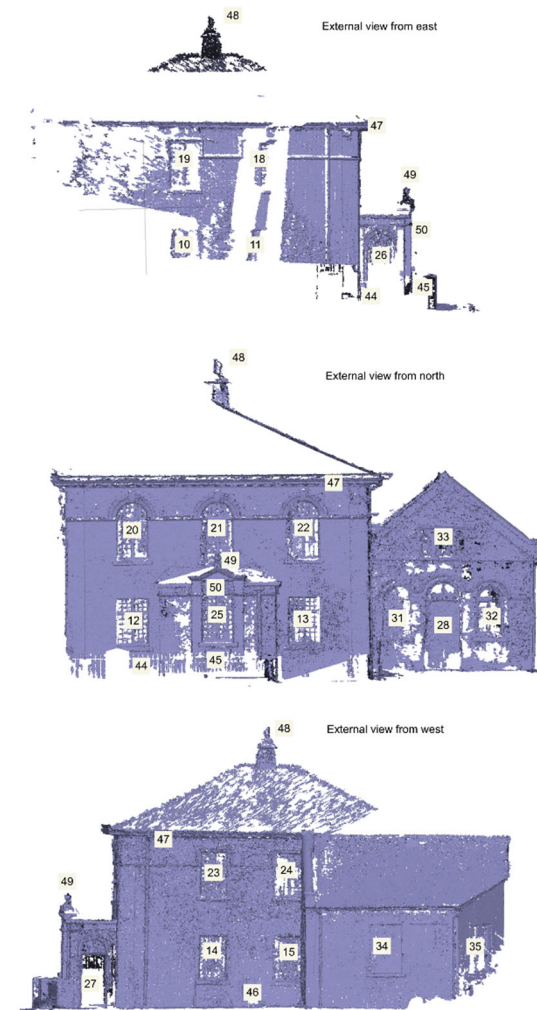
No.	Description	Location	Figure
1	Vestibule	Ground	40, 53, 59-62
2	Hall	Ground	32-58
3	Vestry	Ground	37, 63-68
4	East Staircase	Ground	32, 39, 44, 50, 54, 58



No.	Description	Location	Figure
5	West Staircase	Ground	32, 39, 40, 50, 53, 58
6	East balcony, three rows of pews	Upstairs	33, 34, 38, 41, 43, 44, 47, 48, 49, 50, 51, 53, 57, 58
7	Central balcony, two rows of pews	Upstairs	32, 39, 44, 45, 47, 49, 50, 53, 54, 55, 56, 58
8	West balcony, three rows of pews	Upstairs	33, 41, 42, 45, 46, 47, 48, 50, 58
9	Organ, John Compton Organ Minitura III 1939	Upstairs	32, 45, 50, 54, 55, 56, 58
10	East window	Ground	7, 10, 39, 51, 67
11	East window	Ground	7, 20, 30, 39,
12	Front window	Ground	7, 8, 12, 16, 20, 32
13	Front window	Ground	4, 6, 8, 9, 15, 16, 17, 18, 19, 32, 53
14	West window	Ground	2, 3, 4, 9, 14, 17, 18, 40, 53
15	West window	Ground	17, 53
16	Stained glass window, rear	Upstairs	24, 25, 33, 34, 36, 41, 42, 46, 47, 48, 51, 52
17	Stained glass window, rear	Upstairs	24, 25, 26, 33, 34, 36, 41, 43, 46, 47, 48, 49, 51, 57
18	East window	Upstairs	7, 20, 28, 30, 44, 50, 54, 55, 58
19	East window	Upstairs	7, 20, 29, 44, 47, 48, 57, 58
20	Front window	Upstairs	4, 6, 7, 8, 9, 15, 16, 17, 18, 19, 20, 21, 44, 50, 53, 54, 58
21	Front window	Upstairs	4, 6, 7, 8, 9, 15, 17, 18, 19, 20
22	Front window	Upstairs	6, 7, 8, 9, 15, 16, 17, 18, 19, 20, 32, 50, 53, 58
23	West window	Upstairs	2, 3, 8, 9, 14, 17, 32, 45, 46, 50, 53, 58
24	West window	Upstairs	2, 3, 5, 8, 9, 14, 17, 45, 46, 47, 53,
25	Central window	Vestibule	6, 8, 9, 12, 16, 17, 18, 19, 20, 60, 61
26	East door	Vestibule	7, 12, 19, 20, 61, 62
27	West Door	Vestibule	4, 6, 8, 9, 10, 14, 15, 17, 60
28	Central door	Vestry	3, 4, 5, 8, 9, 10, 13, 14, 16, 28, 63, 64, 65
29	Access door	Vestry	37, 63, 64, 67

No.	Description	Location	Figure
30	Washroom door	Vestry	67
31	Central east window	Vestry	4, 5, 8, 9, 10, 13, 14, 63, 64, 65, 67
32	Central west window	Vestry	3, 4, 5, 8, 9, 10, 13, 14, 16, 17, 63, 64, 68
33	Central row of three small windows	Vestry	3, 4, 5, 8, 9, 10, 16, 17, 65
34	West window	Vestry	2, 3, 10, 14, 37, 68
35	Southwest window	Vestry	2, 68
36	Southeast window	Vestry	67
37	East door to vestibule	Hall	40, 59, 61, 62
38	West door to vestibule	Hall	60
39	Central pews, 8 rows	Hall	32, 33, 34, 38, 39, 41, 48, 49, 50, 51
40	East pews, 8 rows	Hall	32, 35, 36, 38, 39, 40, 41, 49, 50, 51, 53, 58
41	West pews, 8 rows	Hall	32, 35, 36, 37, 38, 40, 41, 45, 53, 58, 64
42	Communion table	Hall	33, 34, 35, 36, 38, 41, 42, 46, 47, 48, 49, 50, 51, 56
43	Pulpit	Hall	33, 34, 35, 36, 38, 41, 42, 43, 46, 47, 48, 49, 50, 51, 57
44	Inscribed slate		7, 18, 19, 21
45	Datestone		6, 7, 8, 9, 11, 12, 16, 19, 20, 22
46	Gravestone		2, 3, 4, 9, 10, 11, 14, 17, 23
47	Corniche dentils	Roof	2, 3, 4, 5, 8, 9, 10, 11, 16, 17, 18, 19, 20, 24, 28, 29, 30
48	Spire	Roof	8, 9, 10, 11, 14, 16, 17, 18, 19
49	Finial	Vestibule	3, 4, 6, 7, 8, 9, 10, 11, 14, 15, 16, 17, 18, 19
50	Name board	Vestibule	6, 7, 8, 9, 11, 16, 17, 18, 19

## 5. Illustrations



*Figure 1 Seion Chapel external views and feature locations. Not to Scale.*



*Figure 2 Chapel and Vestry, view to east.(14, 15, 23, 24, 34, 35, 46, 47)*





Figure 3 Chapel and Vestry, view to east. ( 14, 15, 23, 24, 28, 32, 33, 34, 46, 47, 49,)



Figure 4 Chapel and Vestry View to southeast. (13, 14, 15, 20, 21, 22, 23, 24, 27, 28, 31, 32, 33, 46, 47, 49)



*Figure 5 Vestry, view to south. (15, 24, 28, 31, 32, 33, 47)*





Figure 6 Chapel and Vestibule, view to east. (13, 20, 21, 22, 25, 27, 45, 49, 50)



Figure 7 Chapel and Vestibule, view to southwest. (10, 11, 12, 18, 19, 20, 21, 22, 26, 44, 45, 49, 50)





Figure 8 Chapel and Vestry, view to south. (12, 13, 20, 21, 22, 25, 28, 32, 33, 45, 47, 48, 49, 50)



Figure 9 Chapel and Vestry, view to southeast. (13, 14, 15, 20, 21, 22, 23, 24, 25, 27, 28, 31, 32, 33, 45, 46, 47, 48, 49, 50)



Figure 10 Chapel and Vestry, view to southeast. (27, 28, 32, 33, 34, 45, 46, 47, 48, 49, 50)



Figure 11 Chapel and Vestry, view to southeast. (13, 14, 15, 20, 21, 22, 23, 24, 25, 28, 31, 32, 33, 45, 46, 47, 48, 49, 50)





*Figure 12 Chapel and Vestibule, view to southwest. (12, 25, 26, 45)*



*Figure 13 Vestry, view to south. (28, 31, 32)*





Figure 14 Chapel and Vestry, view to southeast. (14, 15, 23, 24, 27, 28, 31, 32, 33, 34, 46, 47, 48, 49)



Figure 15 Chapel and Vestibule door, view to east. (13, 20, 21, 22, 27, 49)





Figure 16 Chapel, view to south. (12, 13, 20, 21, 22, 25, 28, 32, 33, 45, 47, 48, 49, 50)



Figure 17 Chapel and Vestry, view to south. (13, 14, 15, 20, 21, 22, 23, 24, 25, 27, 28, 32, 33, 46, 47, 48, 49, 50)





Figure 18 Chapel, view to south. (12, 13, 20, 21, 22, 25, 44, 45, 47, 48, 49, 50)



Figure 19 Chapel, view to south. (12, 13, 20, 21, 22, 25, 26, 44, 45, 47, 48, 49, 50)





Figure 20 Chapel, view to southwest. (10, 11, 12, 18, 19, 20, 21, 22, 25, 26, 45, 47, 48, 49, 50)



Figure 21 Inscribed slate. (44)





Figure 22 Date stone (45)



Figure 23 Gravestone (46)





*Figure 24 Rear of chapel, view to north. (16, 17, 47)*



*Figure 25 Rear of chapel, view to north. (16, 17)*





Figure 26 Rear of chapel, view to east. (17)



Figure 27 Rear of Chapel, washroom and Vestry, view to west.



Figure 28 Chapel, view to northwest. (18, 47)





*Figure 29 Chapel, view to west. (19, 47)*



*Figure 30 Chapel, view to north. (11, 18, 47)*

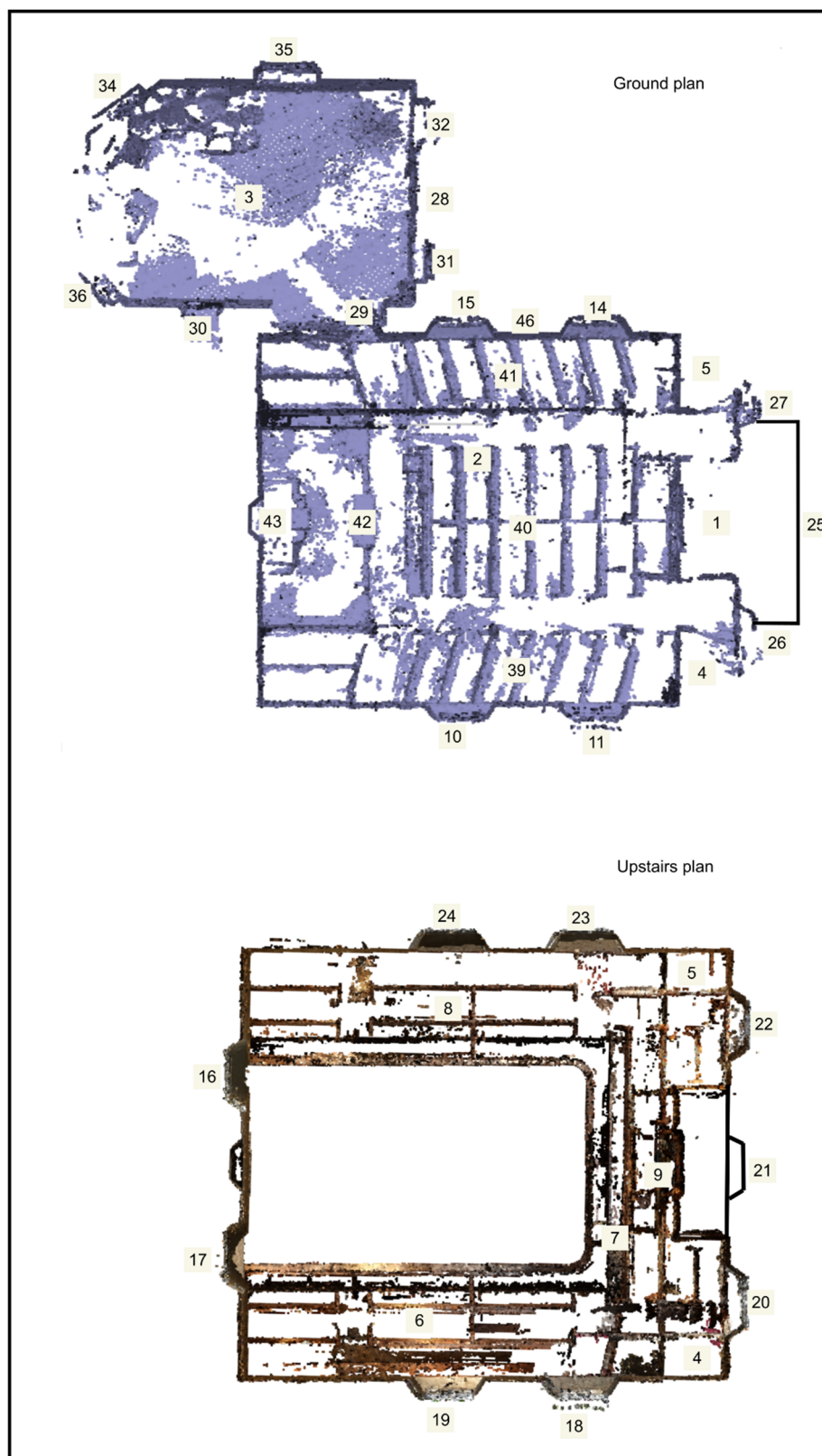


Figure 31 Seion Chapel, internal plan and feature location. Not to Scale.





Figure 32 Hall view to north from pulpit. (4, 5, 7, 9, 12, 13, 22, 23, 39, 40, 41)



Figure 33 Hall from balcony to pulpit, view to south. (6, 8, 16, 17, 39, 42, 43)





Figure 34 Hall to pulpit, view to south. (6, 16, 17, 39, 42, 43)



Figure 35 Hall, balcony to hall, view to southwest. (40, 41, 42, 43)





Figure 36 Hall, to pulpit, view to southeast. (16, 17, 40, 41, 42, 43)



Figure 37 Hall towards Vestry, view to southwest. (29, 34, 41)



Figure 38 Hall towards pulpit, view to east. (6, 39, 40, 41, 42, 43)



Figure 39 Hall, east side, view to north. (4, 5, 7, 10, 11, 39, 40, 42)





Figure 40 Hall towards vestibule, view to northwest. (5, 14, 37, 40, 41)



Figure 41 Hall, balcony towards pulpit, view to south. (6, 8, 16, 17, 39, 40, 41, 42, 43)





Figure 42 Pulpit, view to southwest. (8, 16, 42, 43)



Figure 43 Pulpit, view to southeast. (6, 17, 39, 43)



Figure 44 Hall, balcony, view to northeast. (4, 6, 7, 18, 19, 20, 39)





Figure 45 Hall, balcony, view to west. (7, 8, 9, 23, 24, 41)



Figure 46 Hall, balcony, view to southwest. (8, 16, 17, 23, 24, 43)



Figure 47 Hall balcony, view to south. (6, 7, 8, 16, 17, 19, 24, 42, 43)



Figure 48 Hall balcony, view to southeast. (6, 8, 16, 17, 19, 39, 42, 43)





Figure 49 Hall balcony, view to east. (6, 7, 17, 39, 40, 42, 43)



Figure 50 Hall balcony, view to north. (4, 5, 6, 7, 8, 9, 18, 20, 22, 23, 24, 39, 40, 42, 43)





Figure 51 Hall balcony, view to east. (6, 10, 16, 17, 39, 40, 42, 43)



Figure 52 Hall stained glass window, view to south. (16)



Figure 53 Hall balcony, view to south. (5, 6, 7, 8, 13, 14, 15, 20, 22, 23, 24, 40, 41)



Figure 54 Hall balcony, view to north. (4, 7, 9, 18, 20)





Figure 55 Hall organ, view to east. (7, 9, 18)

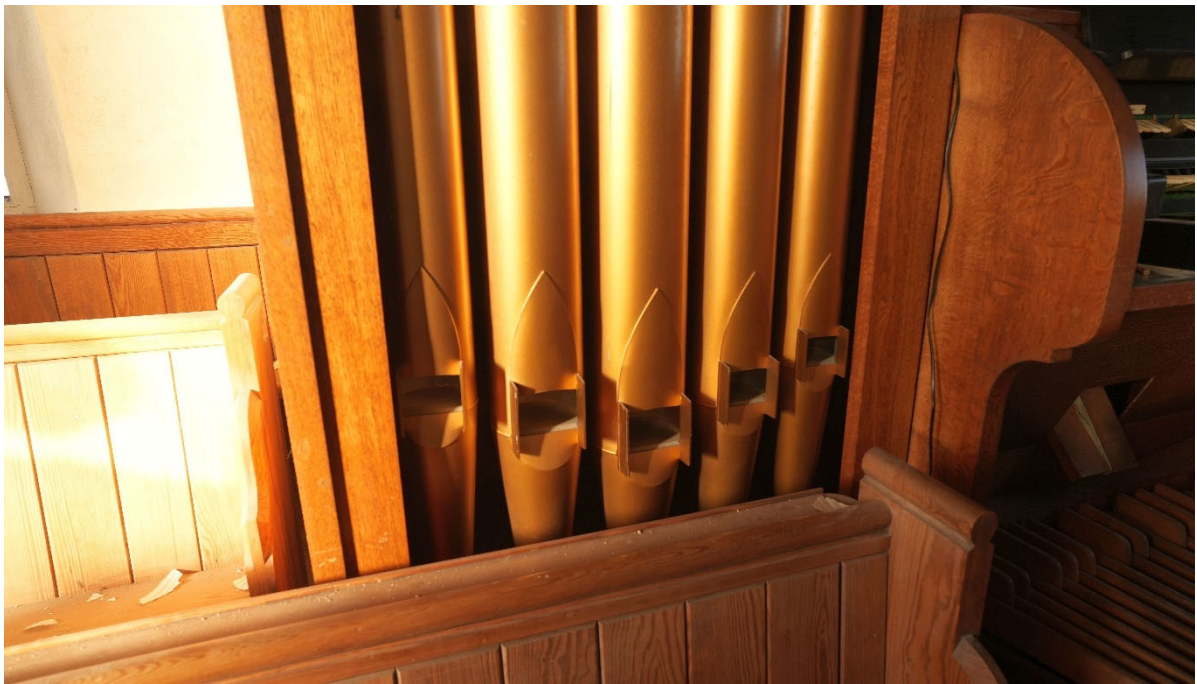


Figure 56 Hall balcony organ, view to north. (7, 9)



Figure 57 Hall balcony, view to south. (6, 17, 19, 42, 43)



Figure 58 Hall balcony, view to north. (4, 5, 6, 7, 8, 9, 18, 19, 20, 22, 23, 40, 41)





Figure 59 Vestibule, view to southeast. (37)



Figure 60 Vestibule, view to west. (25, 27, 38)





*Figure 61 Vestibule, view to northeast. (25, 26, 37)*



*Figure 62 Vestibule, view to east. (26, 37)*



*Figure 63 Vestry, view to north. (28, 29, 31, 32)*



*Figure 64 Vestry, view to northeast. (28, 29, 31, 32, 41)*





*Figure 65 Vestry ceiling, view to north. (28, 31, 33)*



*Figure 66 Vestry, photograph.*



*Figure 67 Vestry, view to east. (10, 29, 30, 31, 36)*



*Figure 68 Vestry, view to northwest. (32, 34, 35)*