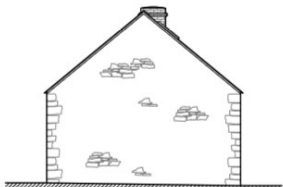
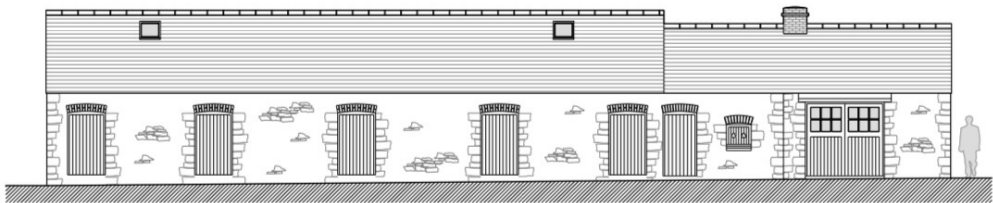


# Barn A



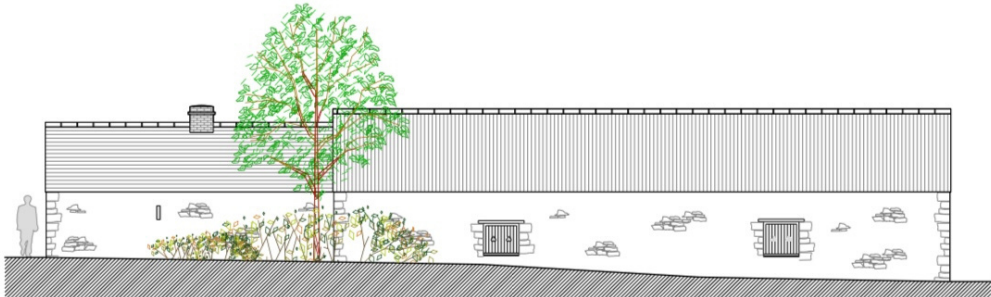
Side / West Elevation (Scale - 1:100)



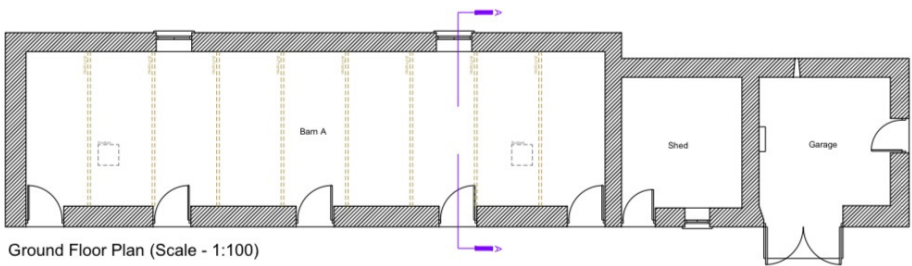
Front / South Elevation (Scale - 1:100)



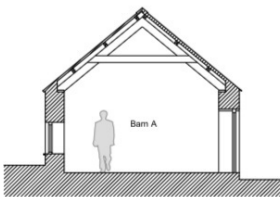
Side / East Elevation (Scale - 1:100)



Rear / North Elevation (Scale - 1:100)



Ground Floor Plan (Scale - 1:100)



Section A-A (Scale - 1:100)

Side East Elevation



**Rear North 1/2**



**Rear North Elevation 2/2**



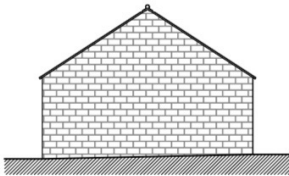
**Rear West Elevation**



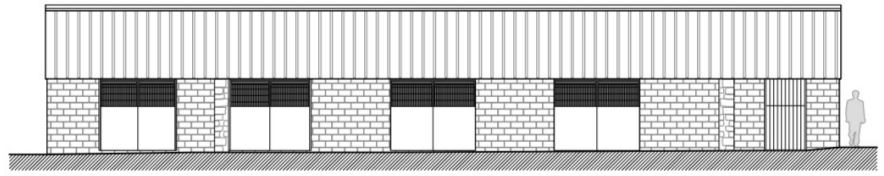
Front South Elevation



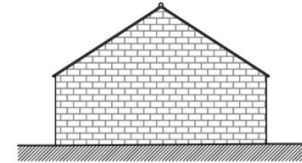
# Barn B



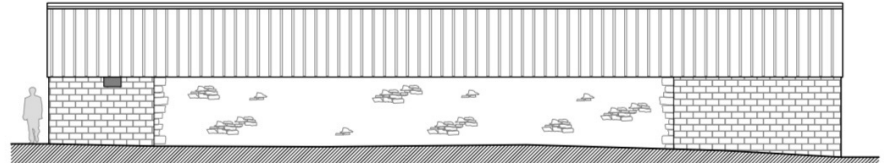
Side / South Elevation (Scale - 1:100)



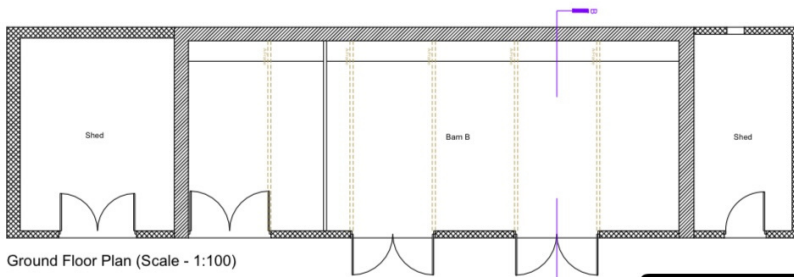
Front / East Elevation (Scale - 1:100)



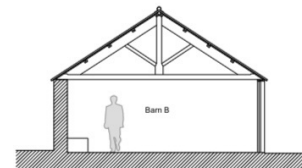
Side / North Elevation (Scale - 1:100)



Rear / West Elevation (Scale - 1:100)



Ground Floor Plan (Scale - 1:100)



Section B-B (Scale - 1:100)

## Side North Elevation



**Rear West Elevation 1/2**



**Rear West Elevation 2/2**



**Side South Elevation**



**Front East Elevation 1/2**

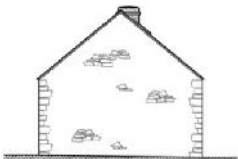


Front East Elevation 2/2

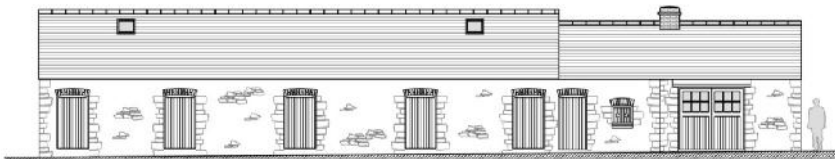


Colby Moor Barns Internal Photos

Barn A



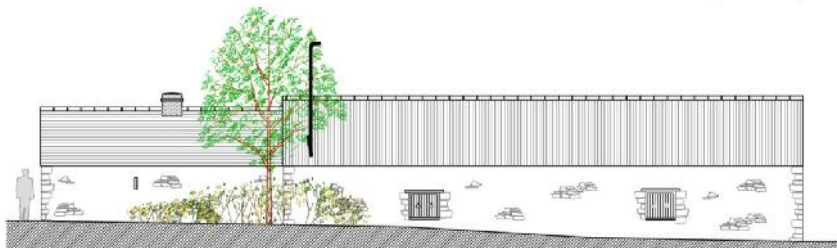
Side / West Elevation (Scale - 1:100)



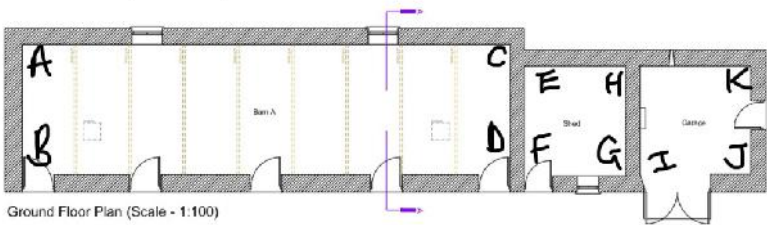
Front / South Elevation (Scale - 1:100)



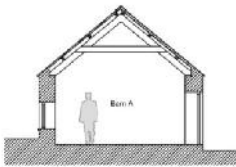
Side / East Elevation (Scale - 1:100)



Rear / North Elevation (Scale - 1:100)



Ground Floor Plan (Scale - 1:100)



Section A-A (Scale - 1:100)

View from marker: A



**View from marker: B**



**View from marker: C**



**View from marker: D**



**View from marker: E**



**View from marker: F**



**View from marker: G**



**View from marker: H**



**View from marker: I**



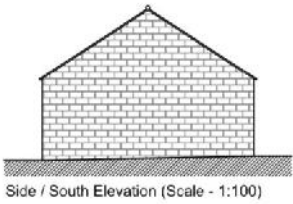
**View from marker: J**



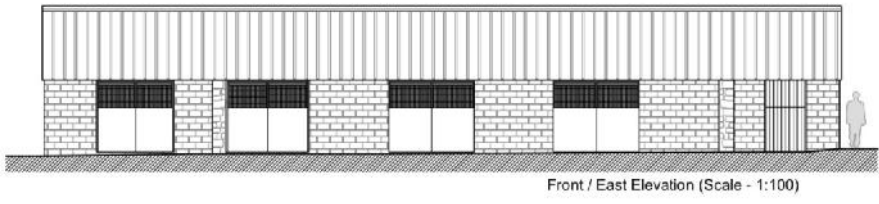
**View from marker: K**



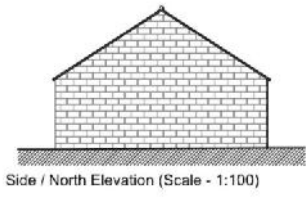
# Barn B



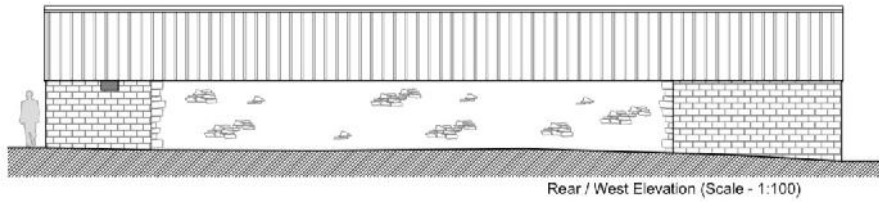
Side / South Elevation (Scale - 1:100)



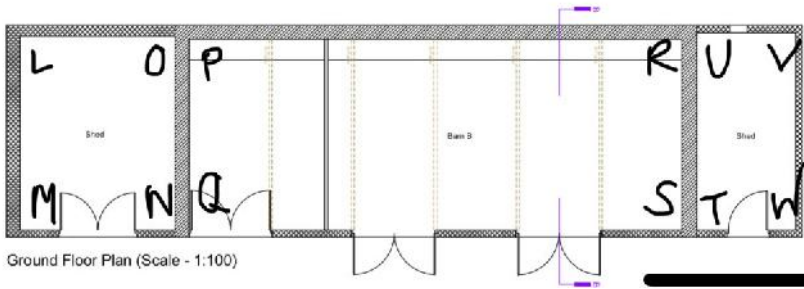
Front / East Elevation (Scale - 1:100)



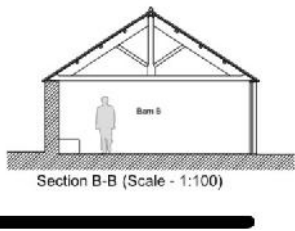
Side / North Elevation (Scale - 1:100)



Rear / West Elevation (Scale - 1:100)



Ground Floor Plan (Scale - 1:100)



Section B-B (Scale - 1:100)

## View from marker: L



View from marker: M



View from marker: N



**View from marker: O**



**View from marker: P**



**View from marker: Q**



**View from marker: R**



**View from marker: S**



**View from marker: T**



**View from marker: U**



**View from marker: V**



View from marker: W

