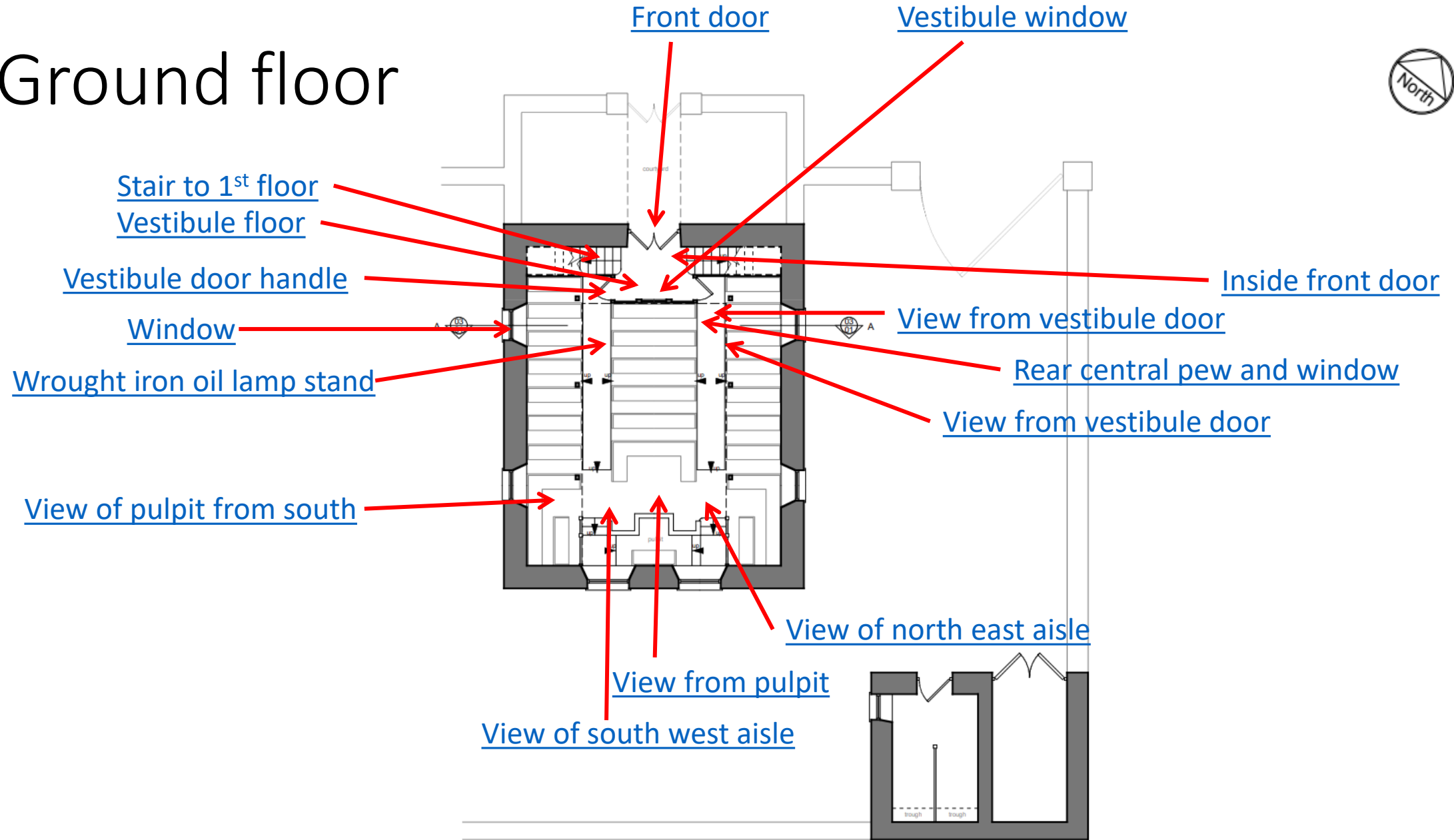


**Capel Sion
Chapel Road
Dwrbach
Fishguard
SA65 9RA**

Ground floor



First floor

View from balcony towards pulpit



View from south west to north east

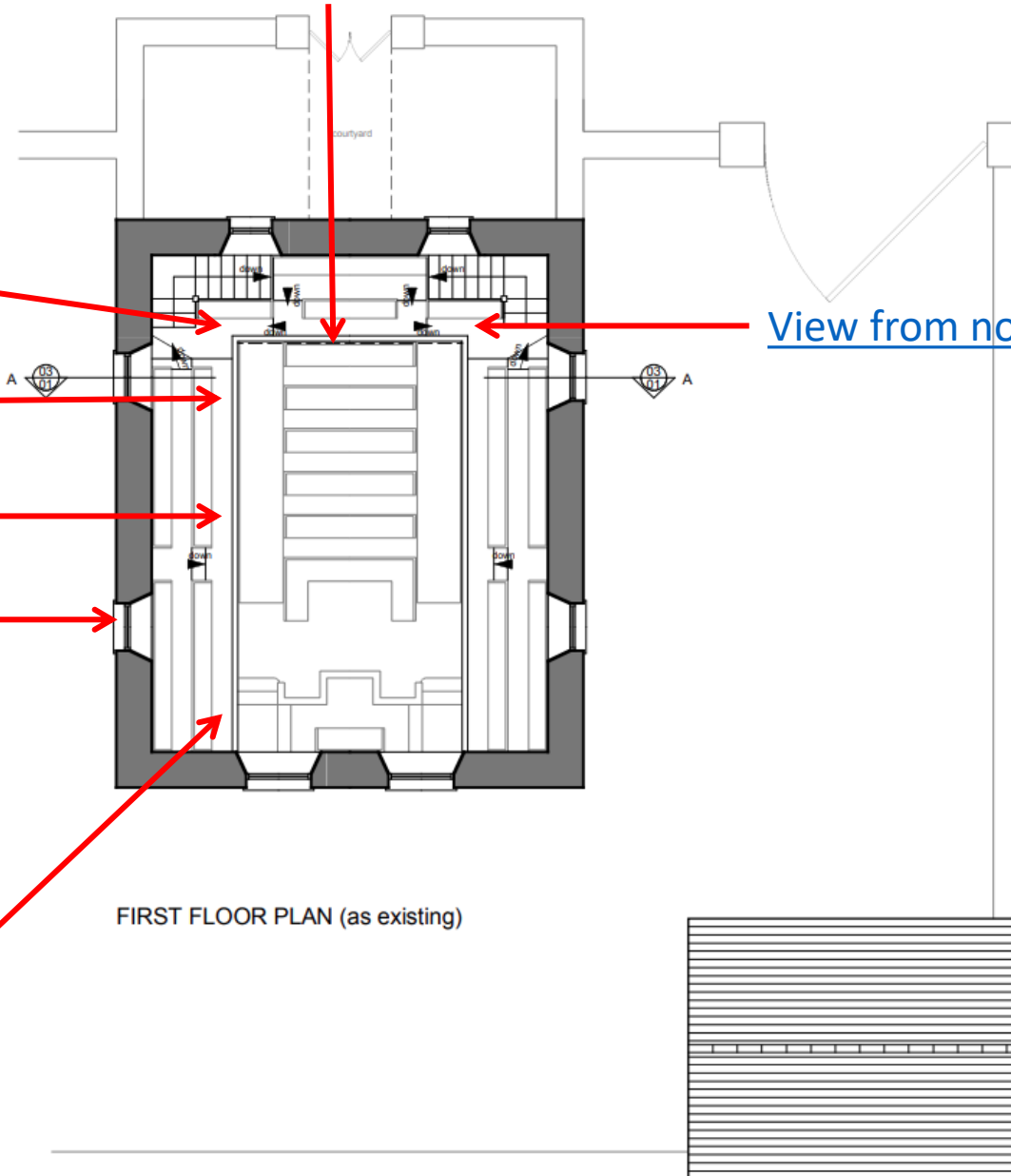
View from south west to north

View from south west to north east

South west window arch

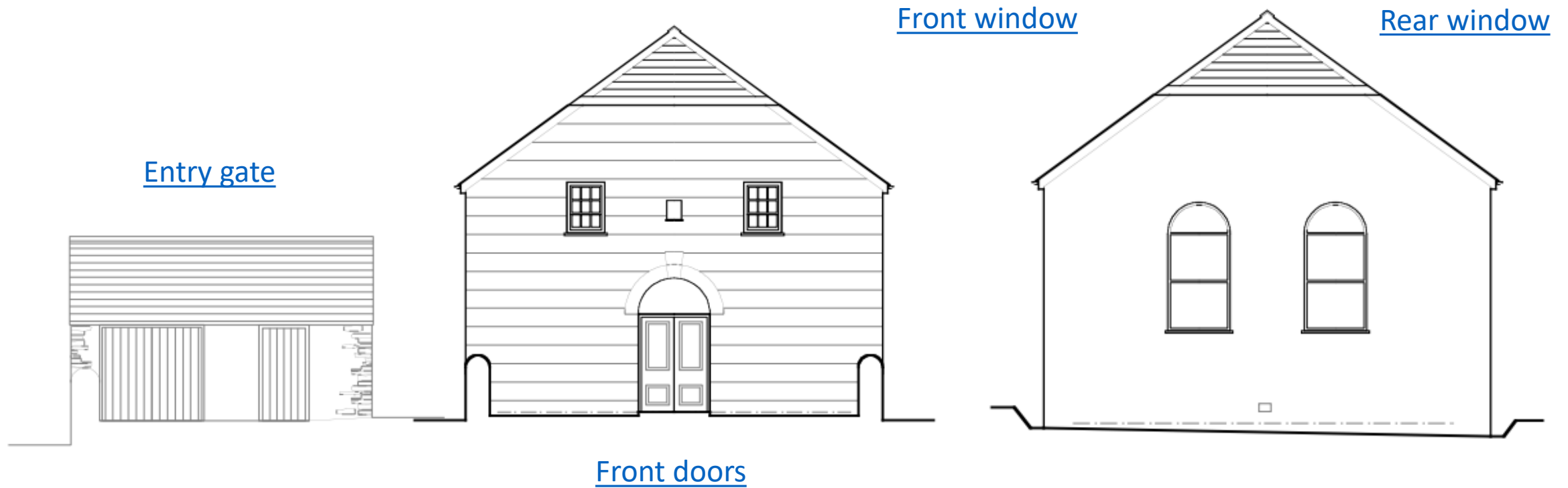
View from north east to south west

View from south to west



Measurements

Front aspect
2022

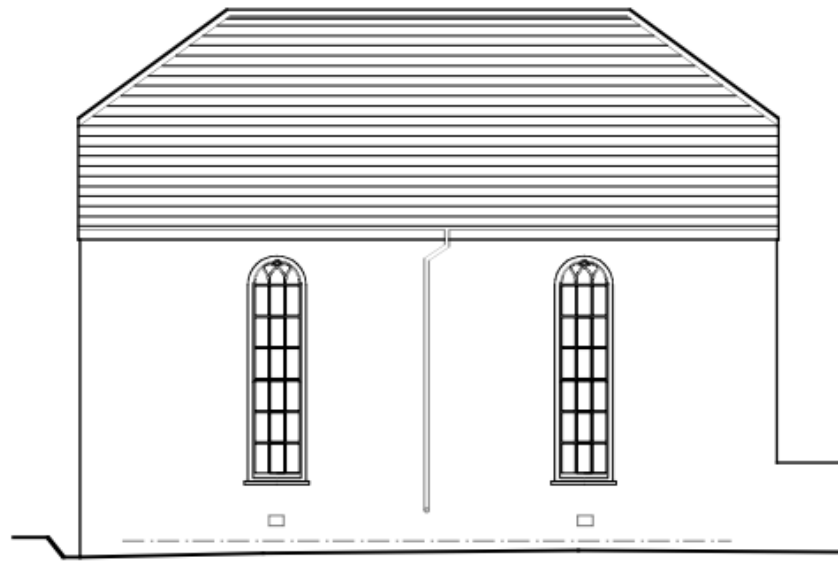


North west elevation

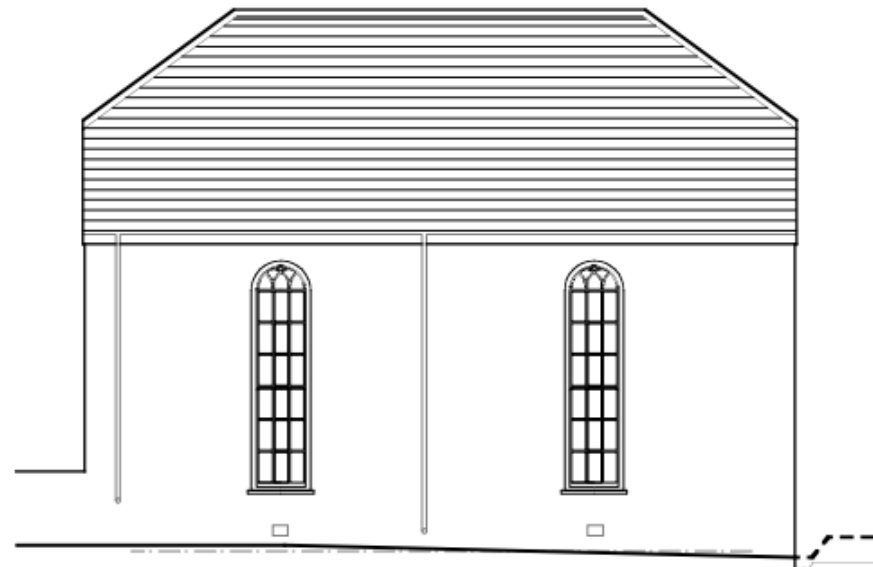
South east elevation

North east elevation

North east elevation from gate

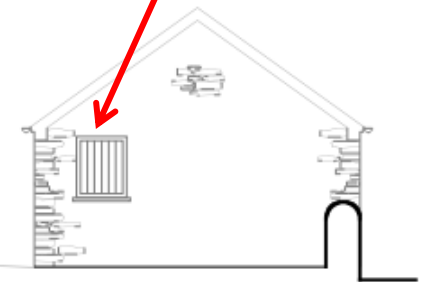


North east elevation



South west elevation

Stable window



Photos

Click on
blue arrow
to return



North west elevation





North east elevation





Gate and stable





North east elevation



South west (side front)
window



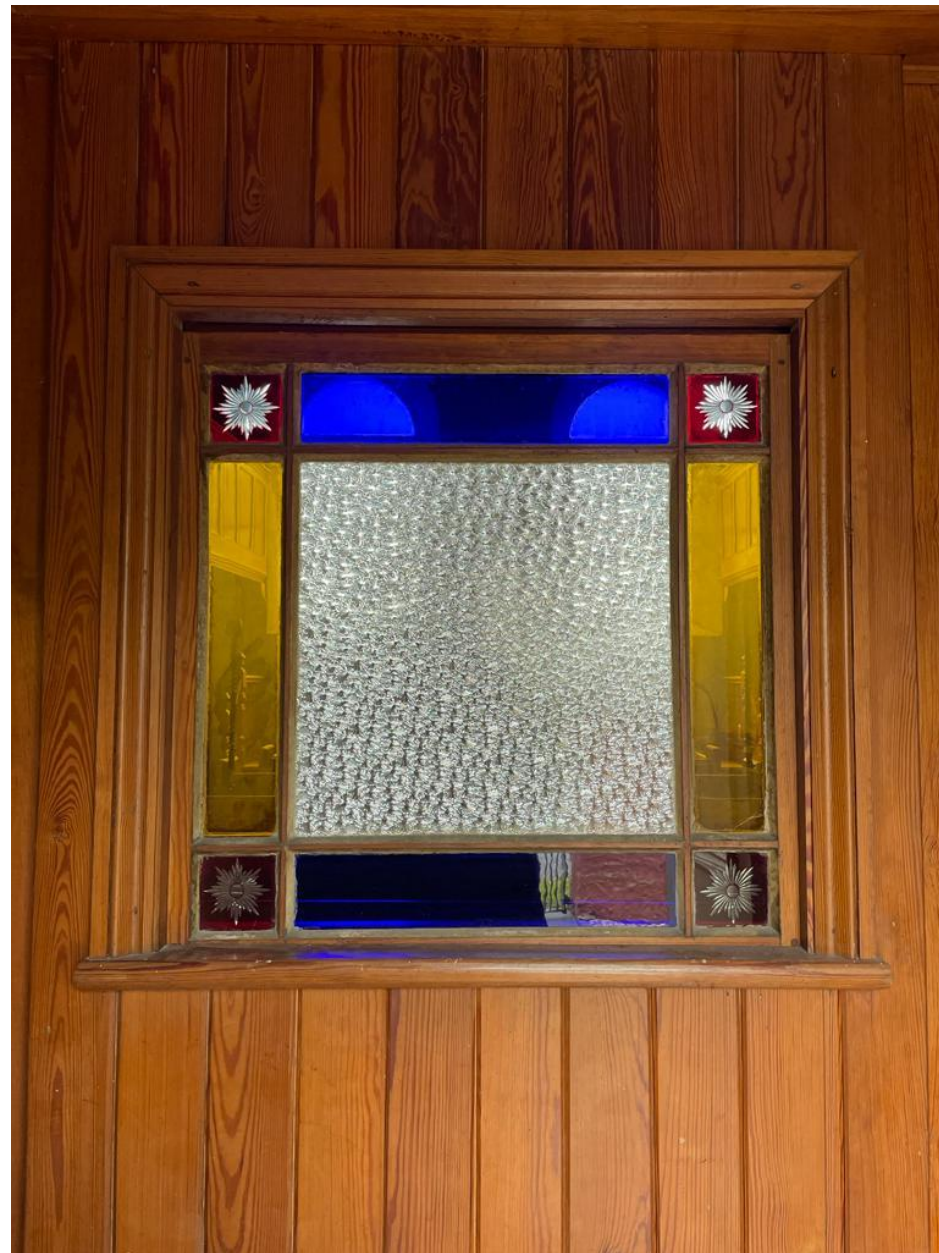
Front doors - exterior



Front doors - interior



Window between chapel
and vestibule



Vestibule floor



Stairway from vestibule up
to First floor



Vestibule door handle



View from pulpit



View from vestibule door



Wrought iron oil lamp
standard



Rear central pew





View from pulpit





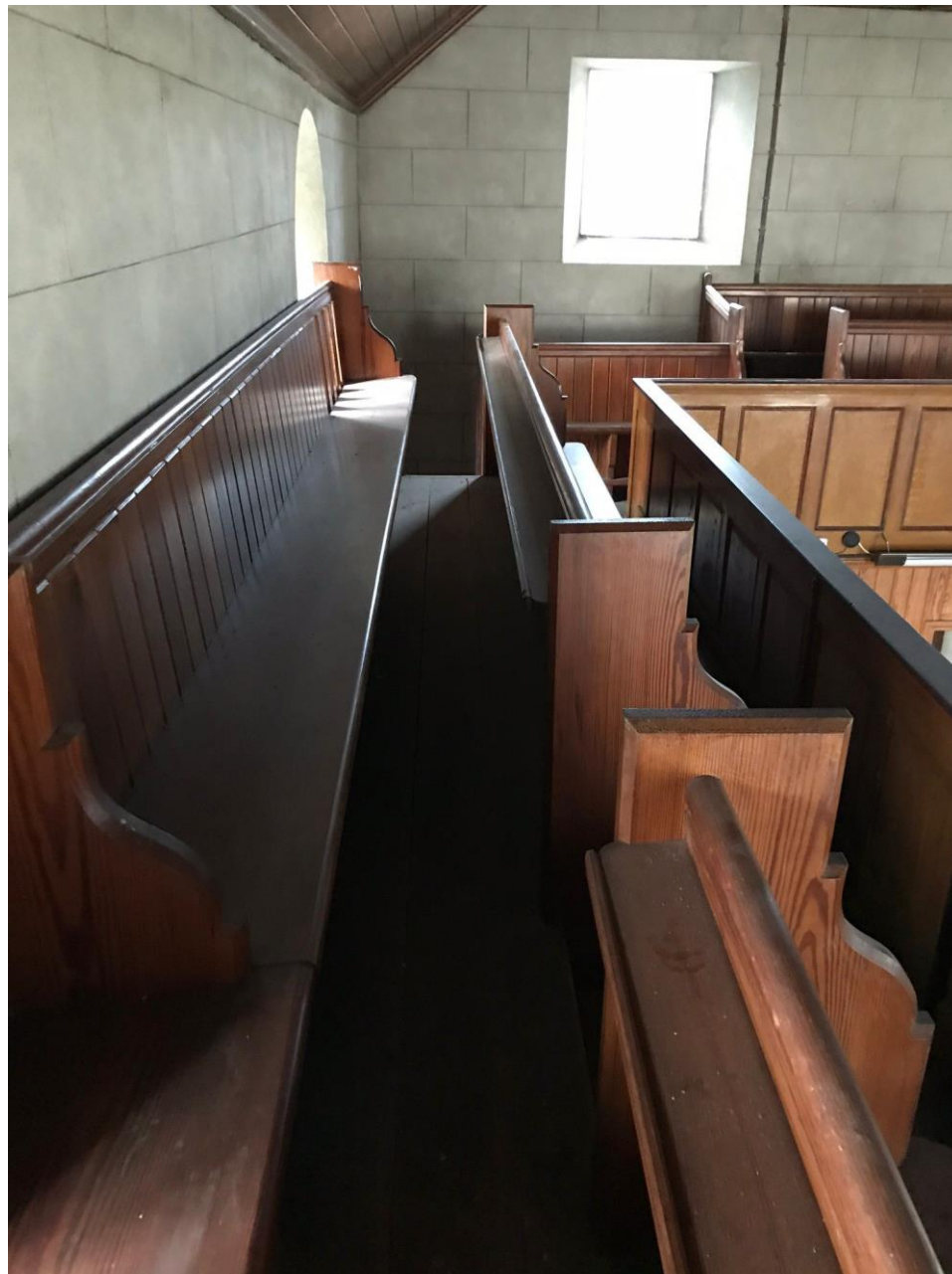
View from vestibule door



View from south west
towards north



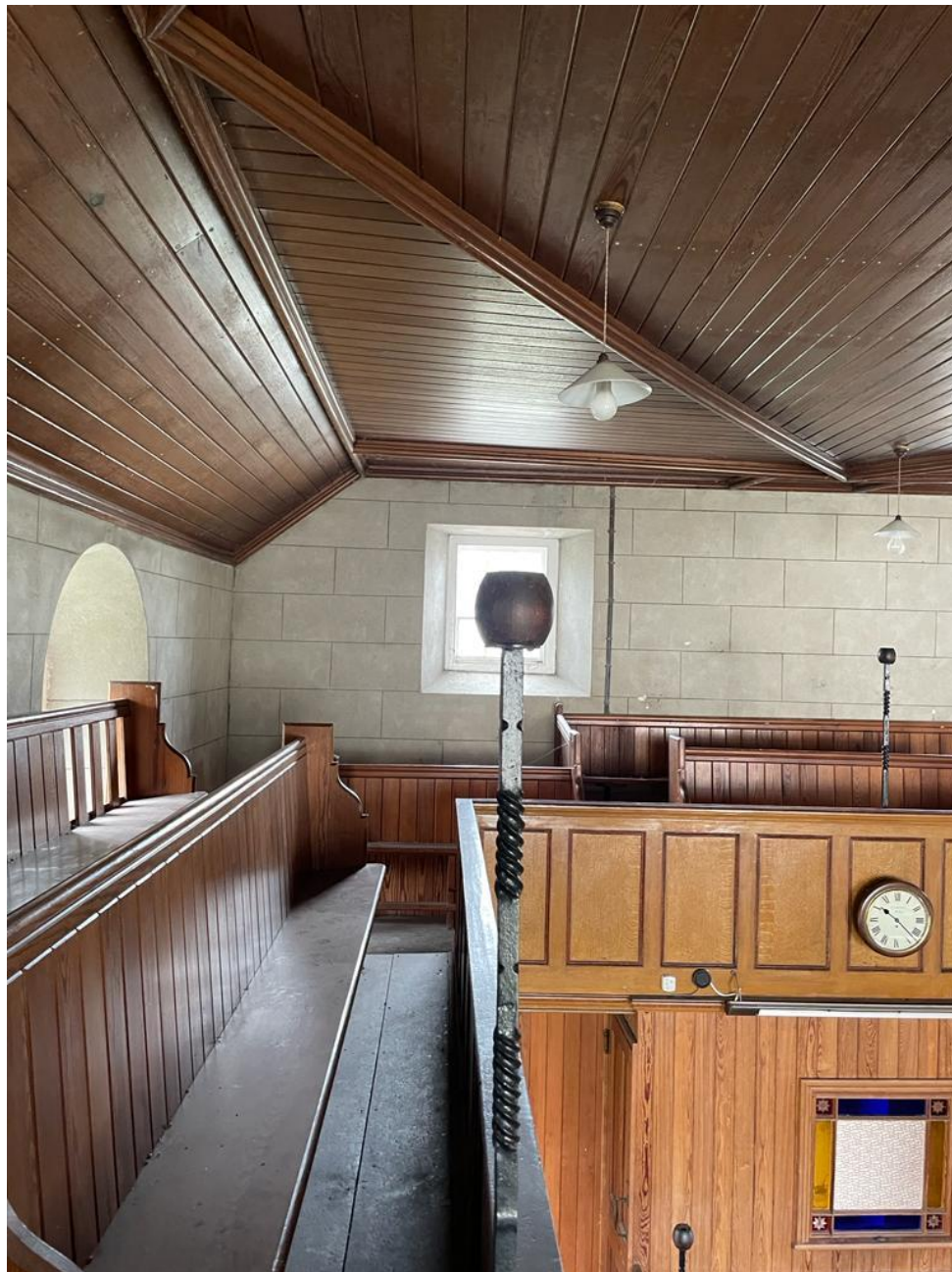
View from south towards
west



View from north towards
south west



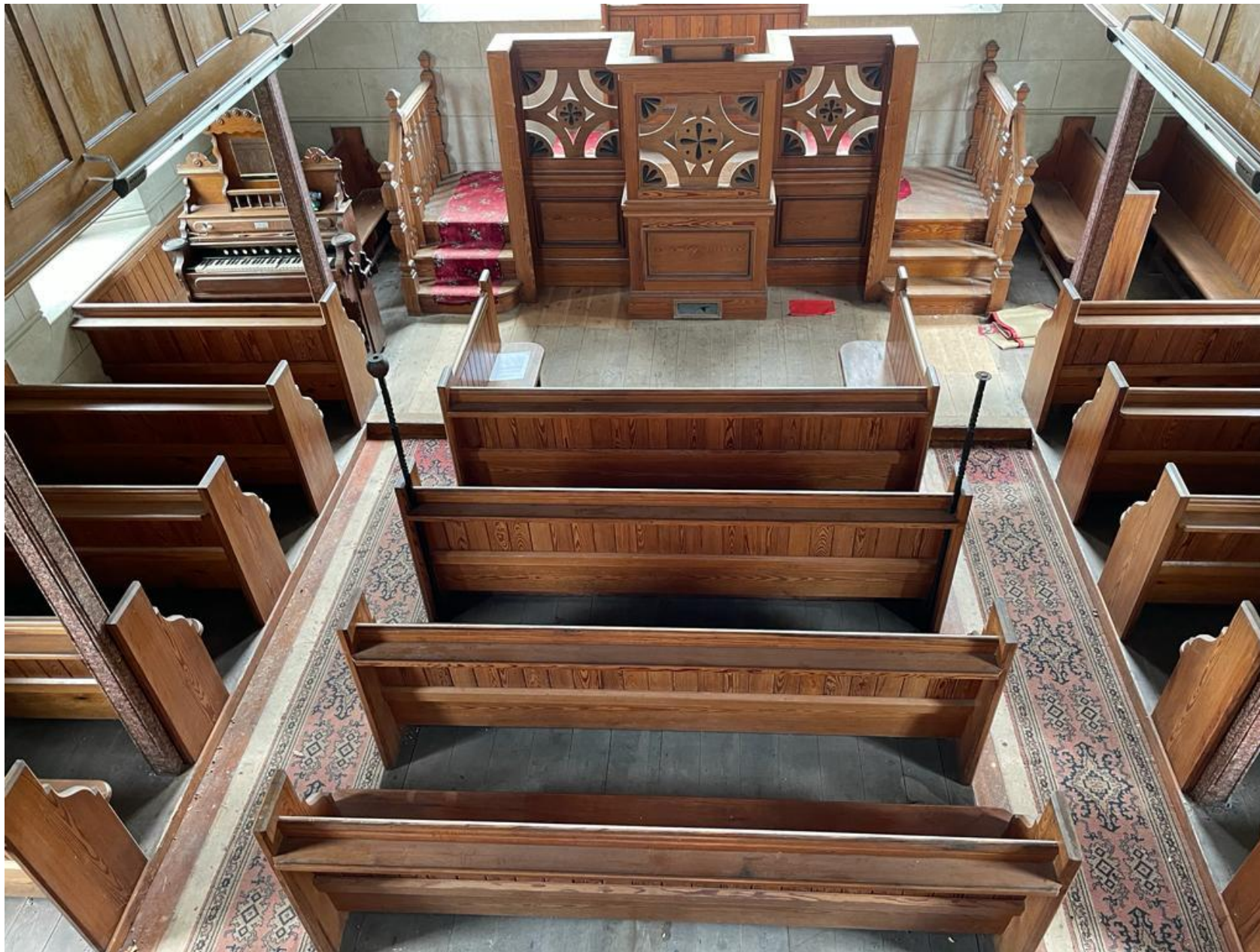
View from south towards
west





South west arched window

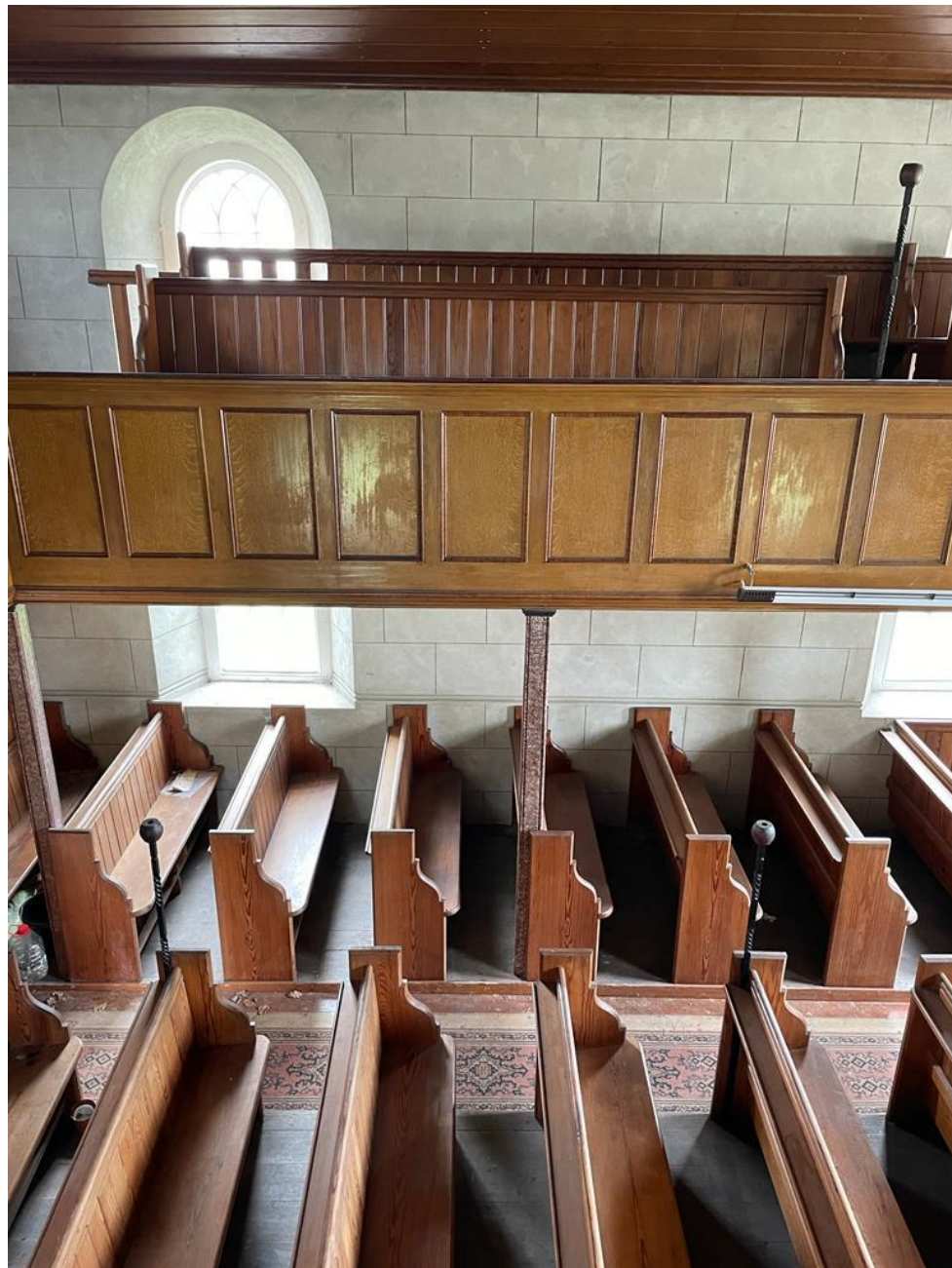




View from balcony towards pulpit



View from south west
towards north east



View of north east aisle



View of pulpit from south



Front first floor window



Front door



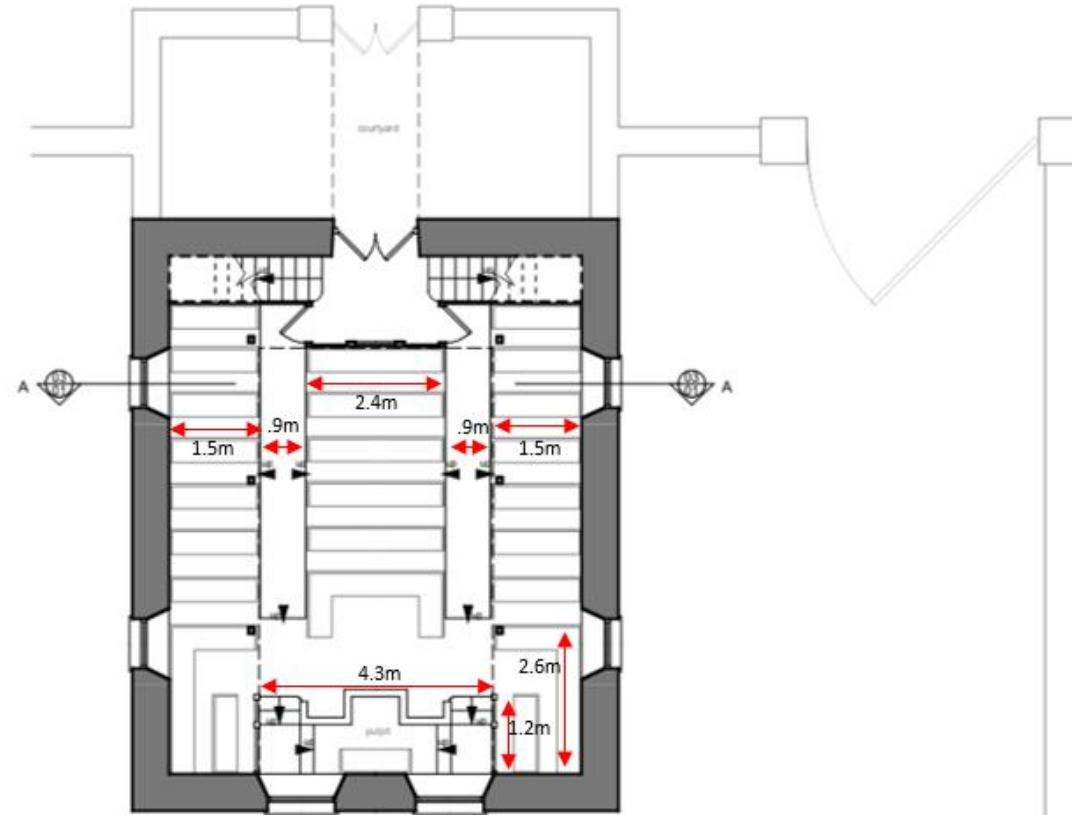
Rear window



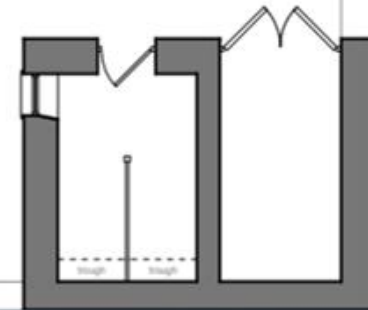
Stable window

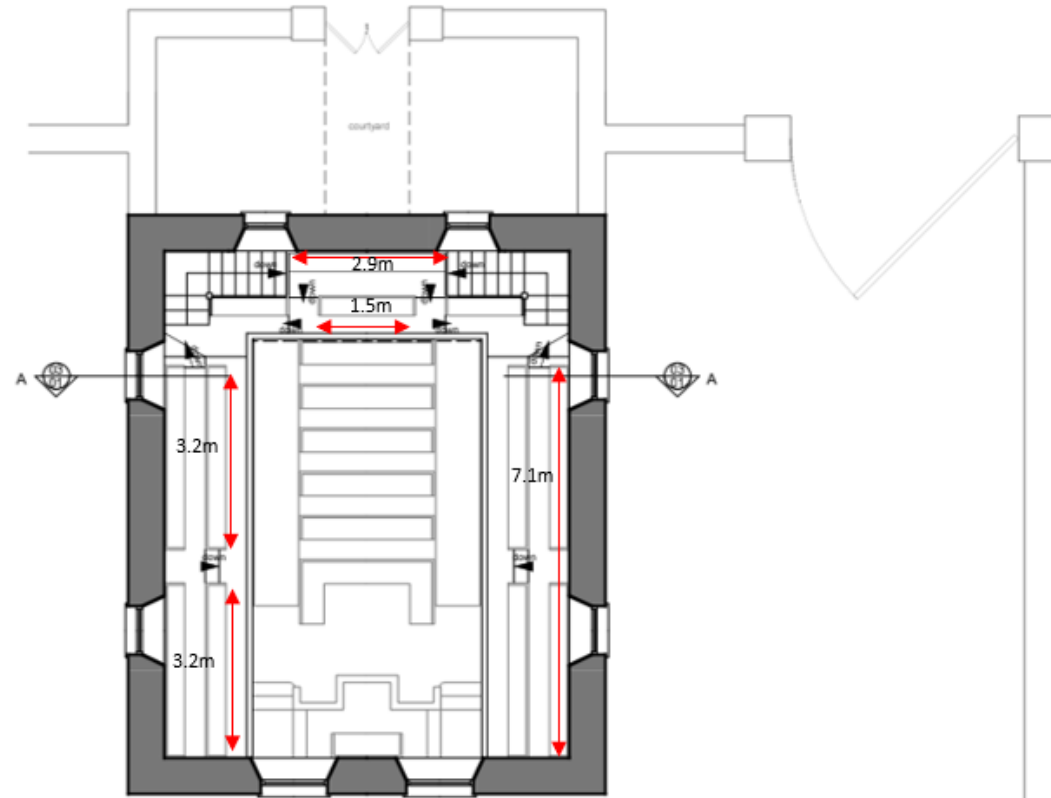


Measurements



GROUND FLOOR PLAN (as existing)





FIRST FLOOR PLAN (as existing)

