

Llynddwr, Llandysul, Ceredigion

Photographic Record

NGR: SN 4091 4194

Planning #: A150844

Project #: AD025

22nd July 2016



ArchaeoDomus

Archaeological & Heritage Services

3 Cysgod-y-Coed, Cwmann, Lampeter, Carm. SA48 8DN

01570 218048 / 07910 213557

ross.cook@archaeodomus.co.uk

www.archaeodomus.co.uk

Prepared for:
Hannah Thomas
c/o Llynddwr, Llandysul, Ceredigion

Project No: N/A

By:
ArchaeoDomus Archaeological & Heritage Services
3 Cysgod-y-Coed, Cwmann, Lampeter, Carmarthenshire, SA48 8DN

Tel: +44 (0) 1570 218048 +44 (0) 7910 213557

Email: ross.cook@archaeodomus.co.uk

www.archaeodomus.co.uk

Project Team

Ross Cook - a buildings archaeologist with a background in archaeology and buildings conservation. I have worked for the Royal Commission on the Ancient and Historical Monuments of Wales as a Historic Buildings Investigator (Archaeology) and within the restoration/conservation of historic buildings, both in Wales and England. Currently I am involved with project work with Cadw, Picton HLF Bid, Oxford Dendrochronological Laboratory and *The Buildings of Medieval and Ottoman Palestine* (publication).

ArchaeoDomus Archaeological & Heritage Services is the trading name of Ross Cook. An affiliate member of the ClfA, and adhere to the ClfA codes of conduct. I hold a valid CSCS card.

Cert. in Buildings Archaeology - University of Sussex, CCE.

PGCert. Social Anthropology - University of Wales, Lampeter

BA Joint Honours Archaeology & Anthropology - University of Wales, Lampeter

CONTENTS

Summary	-	1
1 - Introduction	-	2
1.1 - Project		
1.2 - Site and Location		
2 - Objective	-	3
2.1 - General		
3 - Methodology	-	3
3.1 - Photographic Recording		
3.2 - Health and Safety		
4 - Results	-	4
 <u>Appendix</u>		
Appendix 1 - Photo Location Plan	-	46

List of Plates

- AD025_001** - Farmhouse - North Elevation
- AD025_002** - Cowshed - South Elevation
- AD025_003** - Farmhouse & Cowshed - South Elevation
- AD025_004** - Farmhouse & Cowshed - South Elevation
- AD025_005** - Farmhouse - West Elevation
- AD025_006** - Farmhouse - 3/4 View, North & West Elevations
- AD025_007** - Farmhouse - North Elevation
- AD025_008** - Cowshed - North Elevation
- AD025_009** - Farmhouse & Cowshed - 3/4 View, North & East Elevation
- AD025_010** - Cowshed - East Elevation
- AD025_011** - Farmhouse & Cowshed - South Elevation
- AD025_012** - Farmhouse & Cowshed - General view with surroundings
- AD025_013** - Farmhouse & Cowshed - General view with surroundings
- AD025_014** - Farmhouse & Cowshed - General view with surroundings
- AD025_015** - South Elevation Lean-to
- AD025_016** - Farmhouse - Blocked Door - South Elevation
- AD025_017** - Farmhouse - First Floor Window - South Elevation
- AD025_018** - Farmhouse - Ground Floor Window & First Floor Altered Window (door) - South Elevation
- AD025_019** - Farmhouse - Inserted Garage Door - South Elevation
- AD025_020** - Farmhouse - Inserted Red Brick Door Reveal - South Elevation
- AD025_021** - Farmhouse - Inserted Door to Rear Room - West Elevation
- AD025_022** - Farmhouse - Patch of Plasterwork Demonstrating Existence Former Lean-to - North Elevation
- AD025_023** - Farmhouse - Patch of Plasterwork Demonstrating Existence Former Lean-to - North Elevation
- AD025_024** - Cowshed - Stonework Joint - North Elevation
- AD025_025** - Cowshed - North Elevation
- AD025_026** - Cowshed - Remains of Principle Rafters - North Elevation
- AD025_027** - Cowshed - Repair Infill - North Elevation
- AD025_028** - Cowshed - Inserted Crittall Window - East Elevation
- AD025_029** - Cowshed - Repaired & Filled Window - East Elevation
- AD025_030** - Cowshed - Inserted Crittall Window - South Elevation
- AD025_031** - Cowshed - Blocked Window - South Elevation
- AD025_032** - Corrugated Farm Building
- AD025_033** - Corrugated Farm Building
- AD025_034** - Corrugated Farm Building
- AD025_035** - Farmhouse - Garage Door Lintels, inc. Railway Track
- AD025_036** - Farmhouse - Bay I - Ground Floor
- AD025_037** - Farmhouse - Bay I - Ground Floor
- AD025_038** - Farmhouse - Bay I - Ground Floor
- AD025_039** - Farmhouse - Bay I - Ground Floor
- AD025_040** - Farmhouse - Bay III - Ground Floor
- AD025_041** - Farmhouse - Bay III - Ground Floor
- AD025_042** - Farmhouse - Bay III - Ground Floor
- AD025_043** - Farmhouse - Stair Well - Bay II - Ground Floor
- AD025_044** - Farmhouse - Blocked Fireplace - Bay III - Ground Floor
- AD025_045** - Farmhouse - Bakelite Light Switch
- AD025_046** - Farmhouse - Bakelite Light Fitting
- AD025_047** - Farmhouse - Joists - Bay I - Ground Floor
- AD025_048** - Farmhouse - Blocked Fireplace - Bay I
- AD025_049** - Farmhouse - Bedroom - Bay I - First Floor
- AD025_050** - Farmhouse - Bedroom - Bay I - First Floor
- AD025_051** - Farmhouse - Bedroom - Bay I - First Floor
- AD025_052** - Farmhouse - Principle Rafters - Bay I - First Floor
- AD025_053** - Farmhouse - 12 Light Sash Window - Bay I - First Floor
- AD025_054** - Farmhouse - Lathe & Plaster - Bay I - First Floor

AD025_055 - Farmhouse - Door Frame & Landing - Bay II - First Floor
AD025_056 - Farmhouse - Front Bedroom - Bay II - First Floor
AD025_057 - Farmhouse - Front Bedroom - Bay II - First Floor
AD025_058 - Farmhouse - Bedroom - Bay III - First Floor
AD025_059 - Farmhouse - Bedroom - Bay III - First Floor
AD025_060 - Farmhouse - Blocked Fireplace - Bay III - First Floor
AD025_061 - Farmhouse - Landing - Bay II - First Floor
AD025_062 - Farmhouse - Truss , Purlins & Common Rafters - Loft Space
AD025_063 - Farmhouse - Workshop - Rear Extension
AD025_064 - Farmhouse - Workshop - Rear Extension
AD025_065 - Farmhouse - Workshop - Rear Extension
AD025_066 - Farmhouse - Blocked Doorways - Workshop - Rear Extension
AD025_067 - Farmhouse - Blocked Doorways - Workshop - Rear Extension
AD025_068 - Cowshed - View Towards Farmhouse
AD025_069 - Cowshed - View Away From Farmhouse
AD025_070 - Cowshed - View Towards Farmhouse
AD025_071 - Cowshed - View Away From Farmhouse
AD025_072 - Cowshed - Milking Bays
AD025_073 - Cowshed - Milking Bays
AD025_074 - Cowshed - Water Trough
AD025_075 - Cowshed - Milking Apparatus
AD025_076 - Cowshed - View Towards House
AD025_077 - Cowshed - View Away From House
AD025_078 - Cowshed - Door to South Entrance
AD025_079 - Cowshed - Internal View of Crittall Window
AD025_080 - Cowshed - Water Cistern
AD025_081 - Cowshed - Brook Power Switch
AD025_082 - Lean-to Interior
AD025_083 - Lean-to Interior

Plate 1 - Ground Floor Photo Location Plan

Plate 2 - First Floor Photo Location Plan

Fig. 1 - Llynddwr Location. Ordnance Survey 1:15,000 to 1:30,000 VectorMap District.
Contains Ordnance Survey data © Crown copyright and database right 2016

Photographic Record of Llynddwr, Llandysul, Carms

Summary

*ArchaeoDomus Archaeological & Heritage Services was commissioned by Hannah Thomas to prepare this Photographic Record to comply with an archaeological condition as recommended by Dyfed Archaeological Trust Development Management and applied by Ceredigion County Council Planning (**A150844**).*

The Photographic Record was undertaken on 22nd July 2016 and completed the same day, the results of which are contained within this document. The results will be submitted to Dyfed Archaeological Trust for accession to the Regional Historic Environment Register.

With thanks to Hannah Thomas for commissioning ArchaeoDomus to undertake this work.

1 INTRODUCTION

1.1 Project

1.1.2 ArchaeoDomus was commissioned by Hannah Thomas to undertake photographic record of Llynddwr Farmhouse and Cowshed prior to its renovation into a dwelling house.

1.1.3 Development has been granted with conditions, under planning number **A150844**, with the requirement for a photographic survey:-

Development shall not begin until an appropriate photographic survey of the existing building(s) has been carried out in accordance with guidelines provided by the Local Planning Authority's archaeological advisors - Dyfed Archaeological Trust- Heritage Management. The resulting photographs should be approved by the planning authority prior to the commencement of development and deposited with the regional Historic Environment Record, held and maintained by the Dyfed Archaeological Trust, the Shire Hall, Carmarthen Street, Llandeilo, Carmarthenshire, SA19 6AF, (Tel 01558-823121).

1.1.4 The fieldwork was commenced and concluded on 22nd July 2016.

1.2 Site and Location

1.2.1 The site lies on the northern edge of the B4624, c. 1km from the centre of Llandysul, Ceredigion. The road, formally formed part of the main carriageway between Llandysul and the coast road, joining the A487 at Synod Inn.

1.2.2 'Llyndwr' first appears on the Ordnance Survey Surveyors Map, by Thomas Budgen of 1811. It appears again as 'Llwyn Ddwr' on the 1846 Tithe Map and 'Llyn-ddŵr' on the 1888 OS Six inch to One Mile, to which it remains until being once more altered to Llynddwr post 1953.



Fig. 1 -
Llynddwr
Location.
Ordnance
Survey
1:15,000 to
1:30,000
VectorMap
District.

Contains
Ordnance
Survey data ©
Crown
copyright and
database right
2016

2 **OBJECTIVE**

2.1 **General**

- 2.1.1 Undertake a photographic record of the former farmhouse and attached Cowshed prior to the commencement of any building works.
- 2.1.2 To compile a photographic register and archive for the approval of Dyfed Archaeological Trust Development Management and deposition with the Regional Heritage Environment Record.

3 **METHODOLOGY**

3.1 **Photographic Recording**

- 3.1.1 A digital photographic record was undertaken with a Canon EOS 500D 15.1 megapixel digital camera, with a Canon EFS 18-200mm lens for all external and detailed photography, and a EFS 10-22mm Wide Angle lens for all internal photography.
- 3.1.2 Where possible all photographs were taken with the camera mounted on a tripod and using natural light.
- 3.1.3 Photographs were taken in JPEG and RAW formats.

3.2 **Health and Safety**

- 3.2.1 All work was carried out in accordance with the *Health and Safety at Work Act 1974* and Health and Safety Advice in Archaeology (BAJR 2005).

4 RESULTS



AD025_001 - Farmhouse - South Elevation



AD025_002 - Cowshed - South Elevation



AD025_003 - Farmhouse & Cowshed - South Elevation



AD025_004 - Farmhouse & Cowshed - South Elevation



AD025_005 - Farmhouse - West Elevation



AD025_006 - Farmhouse - 3/4 View, North & West Elevations



AD025_007 - Farmhouse - North Elevation



AD025_008 - Cowshed - North Elevation



AD025_009 - Farmhouse & Cowshed - 3/4 View, North & East Elevation



AD025_010 - Cowshed - East Elevation



AD025_011 - Farmhouse & Cowshed - South Elevation



AD025_012 - Farmhouse & Cowshed - General view with surroundings



AD025_013 - Farmhouse & Cowshed - General view with surroundings



AD025_014 - Farmhouse & Cowshed - General view with surroundings



AD025_015 - South Elevation Lean-to



AD025_016 - Farmhouse - Blocked Door - South Elevation



AD025_017 - Farmhouse - First Floor Window - South Elevation



AD025_018 - Farmhouse - Ground Floor Window & First Floor Altered Window (door) - South Elevation



AD025_019 - Farmhouse - Inserted Garage Door - South Elevation



AD025_020 - Farmhouse - Inserted Red Brick Door Reveal - South Elevation



AD025_021 - Farmhouse - Inserted Door to Rear Room - West Elevation



AD025_022 - Farmhouse - Patch of Plasterwork Demonstrating Existence Former Lean-to - North Elevation



AD025_023 - AD025_022 - Farmhouse - Patch of Plasterwork Demonstrating Existence Former Lean-to - North Elevation



AD025_024 - Cowshed - Stonework Joint - North Elevation



AD025_025 - Cowshed - North Elevation



AD025_026 - Cowshed - Remains of Principle Rafters - North Elevation



AD025_027 - Cowshed - Repair Infill - North Elevation



AD025_028 - Cowshed - Inserted Crittall Window - East Elevation



AD025_029 - Cowshed - Repaired & Filled Window - East Elevation



AD025_030 - Cowshed - Inserted Crittall Window - South Elevation



AD025_031 - Cowshed - Blocked Window - South Elevation



AD025_032 - Corrugated Farm Building



AD025_033 - Corrugated Farm Building



AD025_034 - Corrugated Farm Building



AD025_035 - Farmhouse - Garage Door Lintels, inc. Railway Track



AD025_036 - Farmhouse - Bay I - Ground Floor



AD025_037 - Farmhouse - Bay I - Ground Floor



AD025_038 - Farmhouse - Bay I - Ground Floor



AD025_039 - Farmhouse - Bay I - Ground Floor



AD025_040 - Farmhouse - Bay III - Ground Floor



AD025_041 - Farmhouse - Bay III - Ground Floor



AD025_042 - Farmhouse - Bay III - Ground Floor



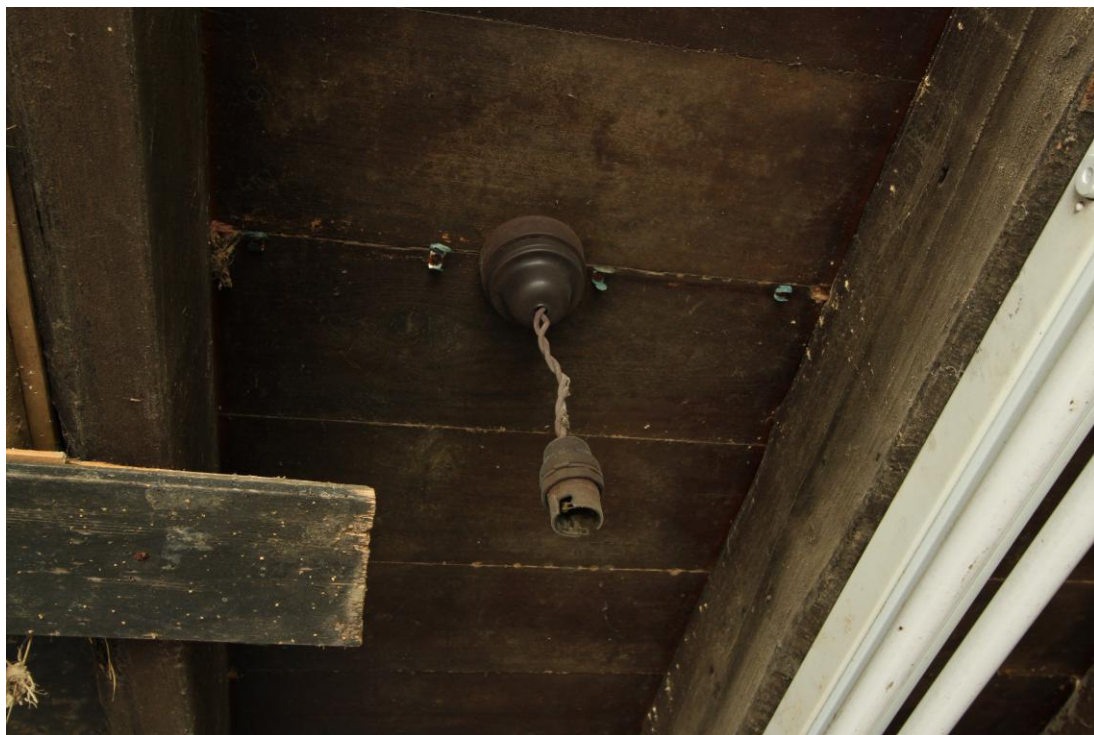
AD025_043 - Farmhouse - Stair Well - Bay II - Ground Floor



AD025_044 - Farmhouse - Blocked Fireplace - Bay III - Ground Floor



AD025_045 - Farmhouse - Bakelite Light Switch



AD025_046 - Farmhouse - Bakelite Light Fitting



AD025_047 - Farmhouse - Joists - Bay I - Ground Floor



AD025_048 - Farmhouse - Blocked Fireplace - Bay I



AD025_049 - Farmhouse - Bedroom - Bay I - First Floor



AD025_050 - Farmhouse - Bedroom - Bay I - First Floor



AD025_051 - Farmhouse - Bedroom - Bay I - First Floor



AD025_052 - Farmhouse - Principle Rafters - Bay I - First Floor



AD025_053 - Farmhouse - 12 Light Sash Window - Bay I - First Floor



AD025_054 - Farmhouse - Lathe & Plaster - Bay I - First Floor



AD025_055 - Farmhouse - Door Frame & Landing - Bay II - First Floor



AD025_056 - Farmhouse - Front Bedroom - Bay II - First Floor



AD025_057 - Farmhouse - Front Bedroom - Bay II - First Floor



AD025_058 - Farmhouse - Bedroom - Bay III - First Floor



AD025_059 - Farmhouse - Bedroom - Bay III - First Floor



AD025_060 - Farmhouse - Blocked Fireplace - Bay III - First Floor



AD025_061 - Farmhouse - Landing - Bay II - First Floor



AD025_062 - Farmhouse - Truss , Purlins & Common Rafters - Loft Space



AD025_063 - Farmhouse - Workshop - Rear Extension



AD025_064 - Farmhouse - Workshop - Rear Extension



AD025_065 - Farmhouse - Workshop - Rear Extension



AD025_066 - Farmhouse - Blocked Doorways - Workshop - Rear Extension



AD025_067 - Farmhouse - Blocked Doorways - Workshop - Rear Extension



AD025_068 - Cowshed - View Towards Farmhouse



AD025_069 - Cowshed - View Away From Farmhouse



AD025_070 - Cowshed - View Towards Farmhouse



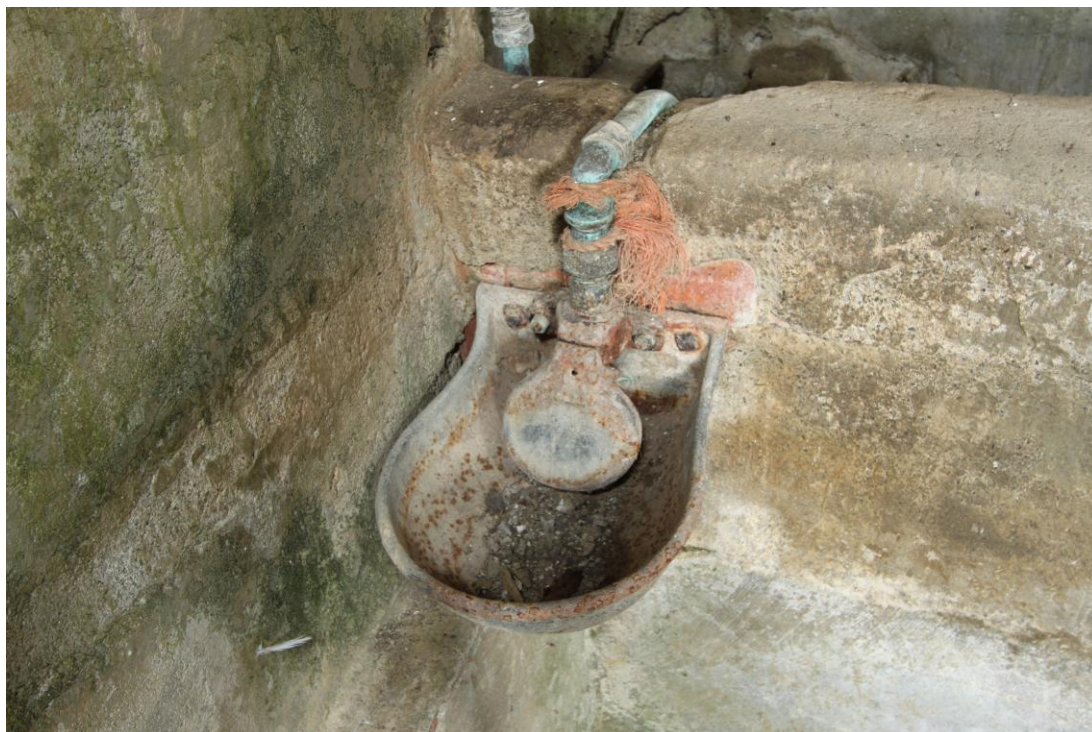
AD025_071 - Cowshed - View Away From Farmhouse



AD025_072 - Cowshed - Milking Bays



AD025_073 - Cowshed - Milking Bays



AD025_074 - Cowshed - Water Trough



AD025_075 - Cowshed - Milking Apparatus



AD025_076 - Cowshed - View Towards House



AD025_077 - Cowshed - View Away From House



AD025_078 - Cowshed - Door to South Entrance



AD025_079 - Cowshed - Internal View of Crittall Window



AD025_080 - Cowshed - Water Cistern



AD025_081 - Cowshed - Brook Power Switch



AD025_082 - Lean-to Interior



AD025_083 - Lean-to Interior

Appendix 1 - Photo Location Plans

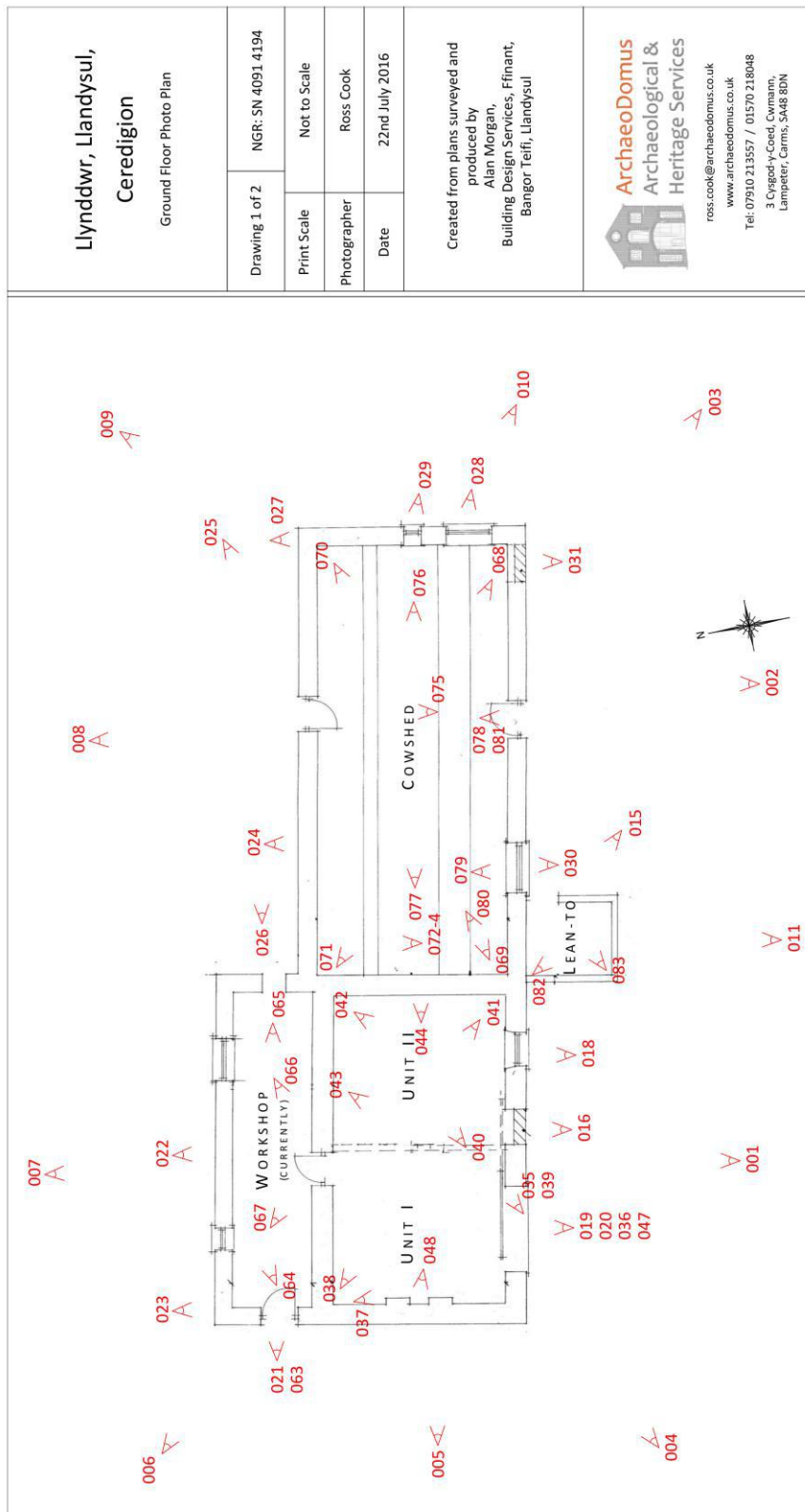


Plate 1 - Ground Floor Photo Location Plan

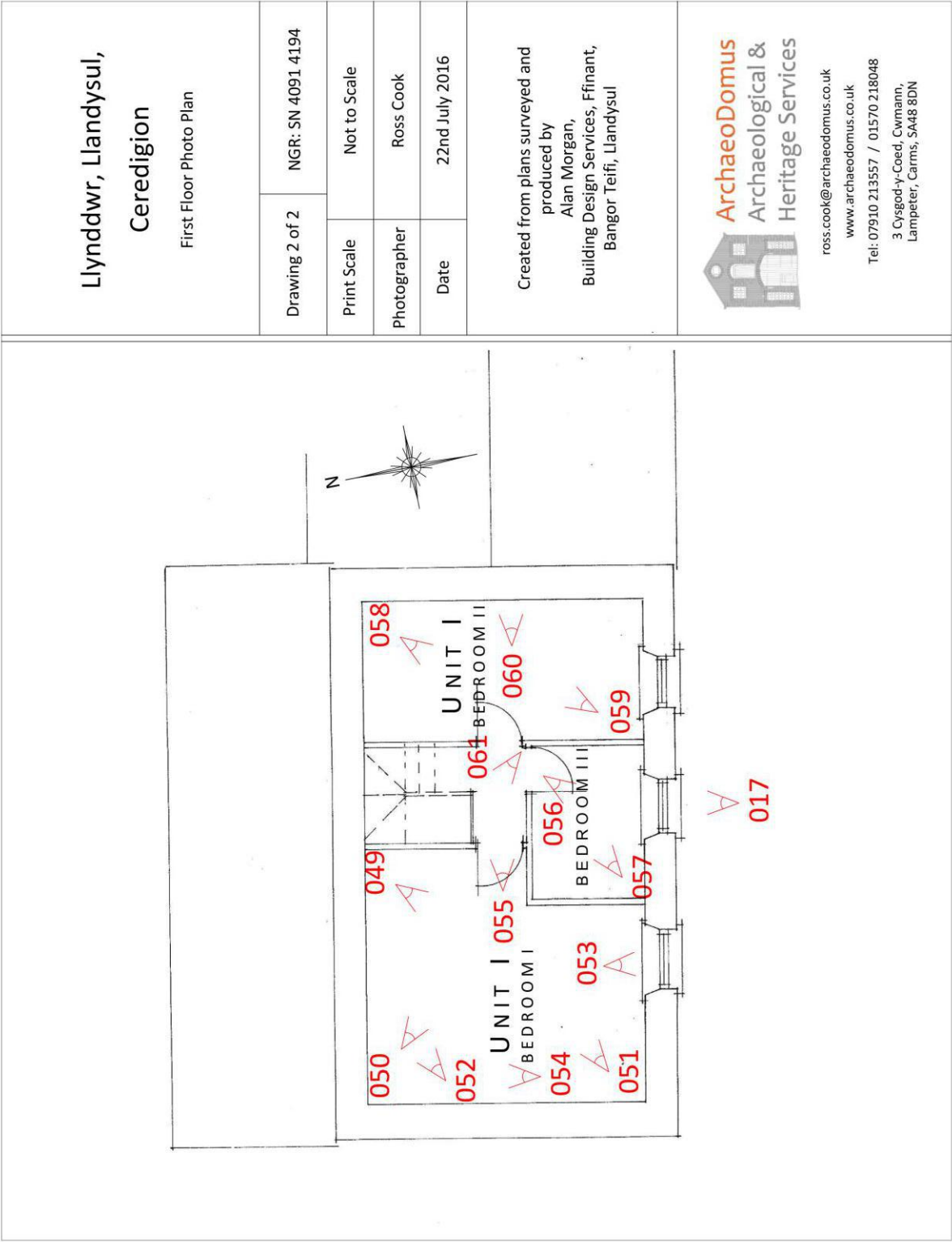


Plate 2 - First Floor Photo Location Plan