

A Photographic Record of
Tre'r Ddol Chapel
Machynlleth



Photographs taken in February 2007

Griff Davies Architectural Design & Conservation Ltd



Main entrance to the Chapel

A



Details on roof of entrance porch





B

Windows to the right hand side of entrance door



Circular window above entrance porch and detail on gable



Right hand side elevation

C



Left hand side elevation

D

Tre'r Ddol Chapel Spire





Interior of Chapel, looking towards front door



Interior of chapel looking towards pulpit



Left hand side steps to pulpit

E



Side view of pulpit



Pulpit details





View towards pulpit
Outer balustrading and panelling are to be removed



Plaster panel behind pulpit

F



Detail of ceiling and roses





G

Detail of glass design on widow to side of entrance porch



Window detail in main Chapel



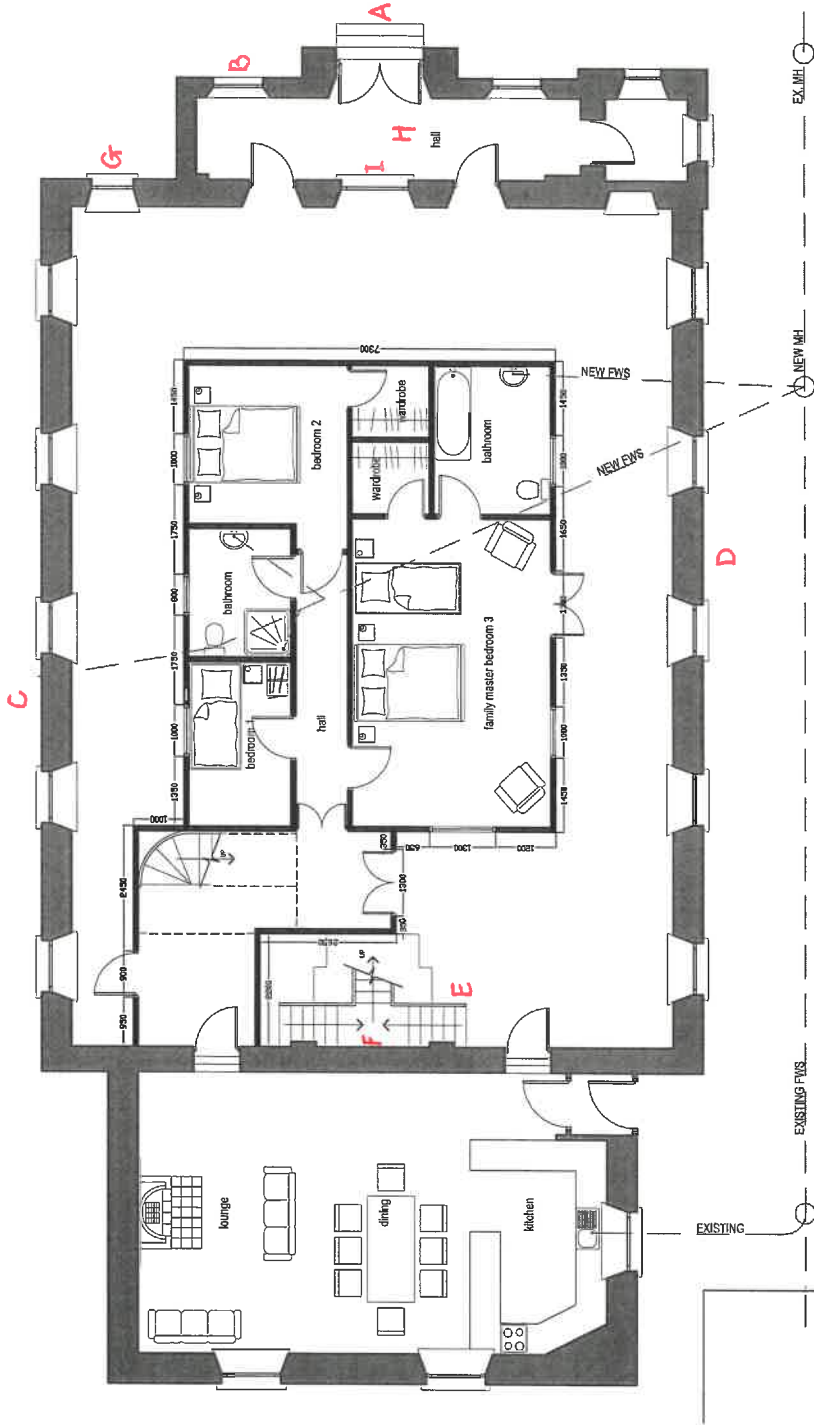
H

Detail of tiles on porch floor



Reverse of etching on glass in porch

I

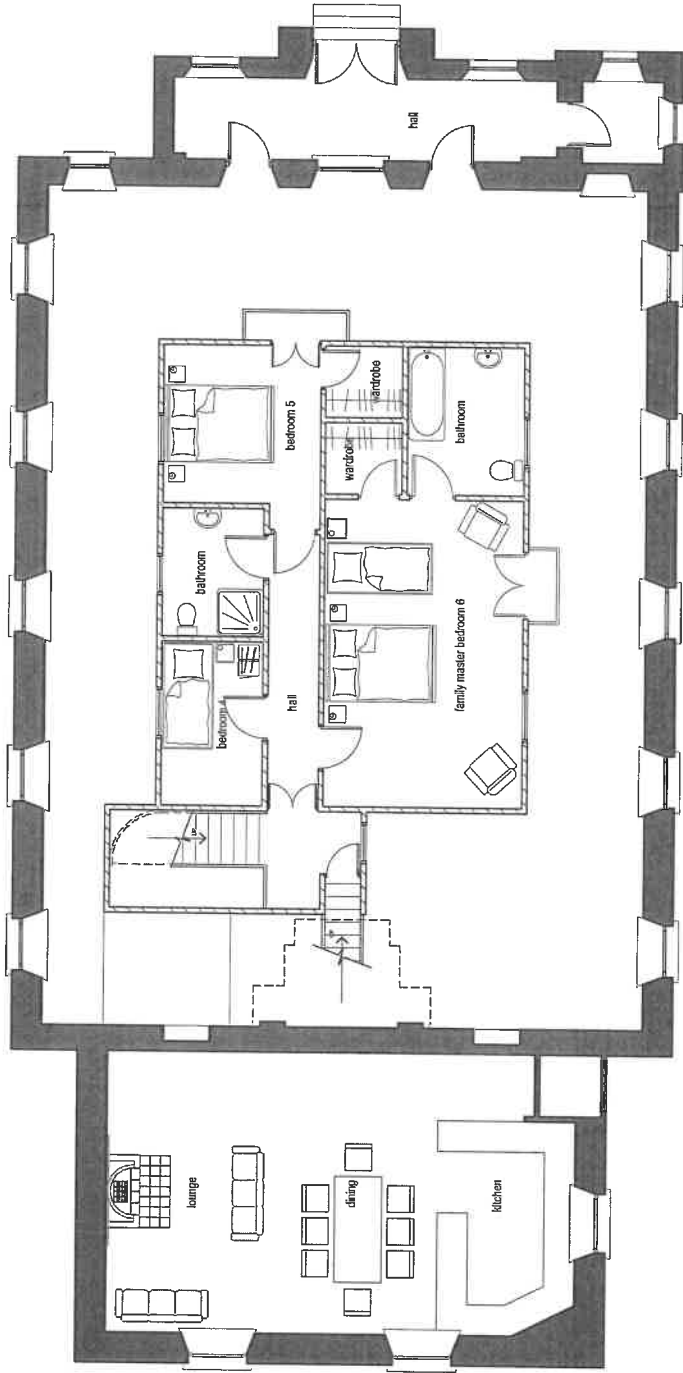


GRIFF DAVIES
ARCHITECTURAL DESIGN
AND CONSERVATION LTD

Griff Davies Architects Ltd, 22, West Gate, Rhyl, Llanrhondda, LL20 2JG
 Registered in Wales, No. 10407000
 A member of the Griff Davies Group of Companies

RICS

Proposed conversion of Tre'r Ddol Chapel into holiday accommodation for Mr Robert Redshaw
 proposed ground floor plan scale 1:50 @ A3

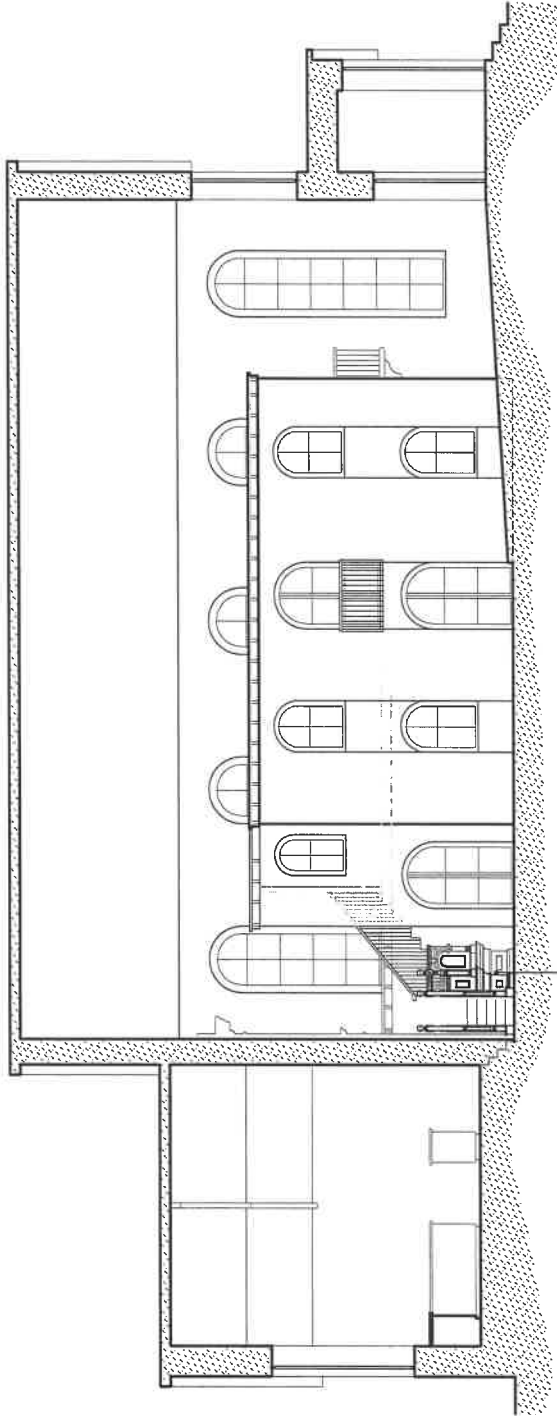


Proposed conversion of Tre'r Ddol Chapel into holiday
accommodation for Mr Robert Redshaw
proposed first floor plan scale 1:100



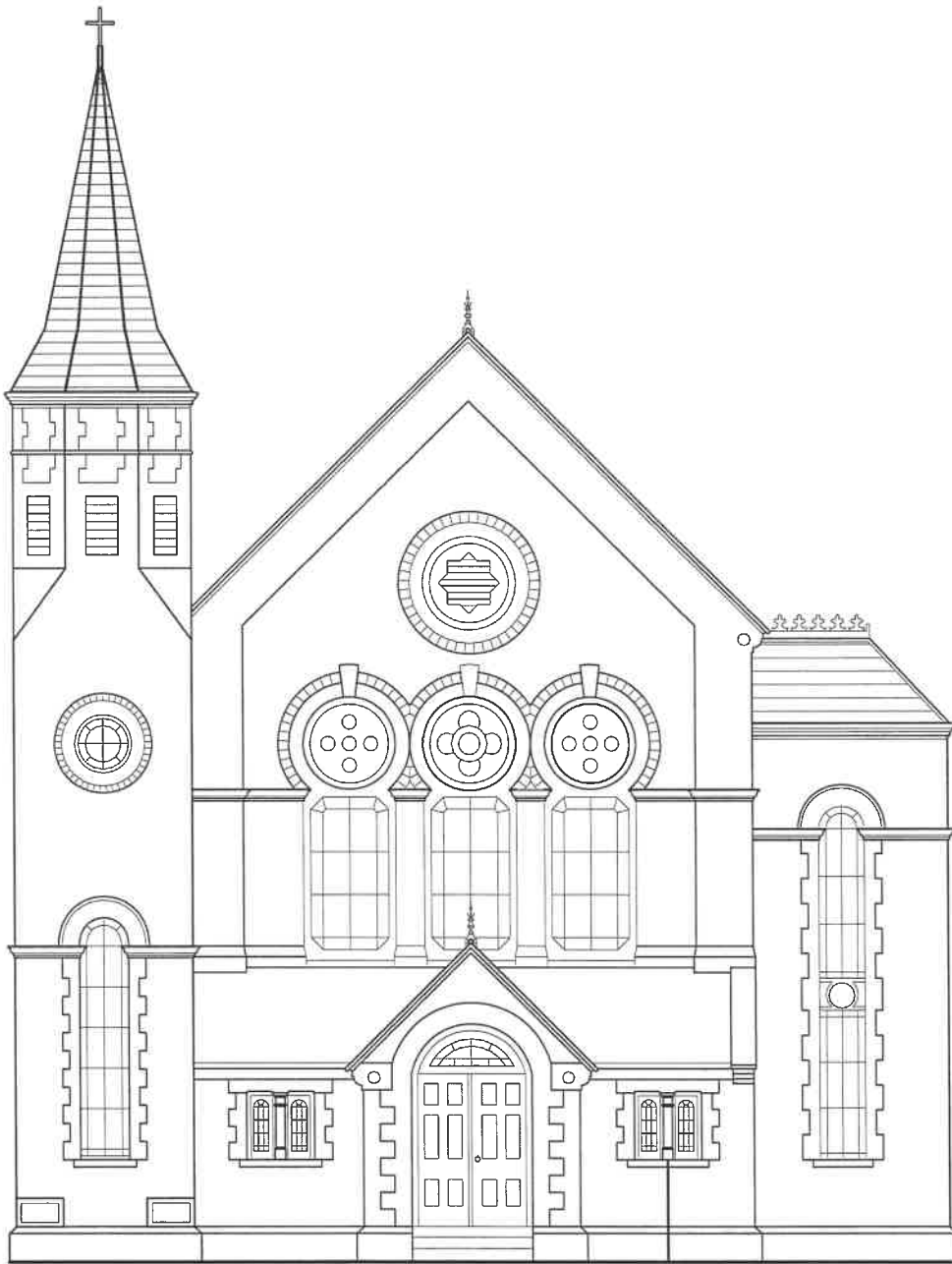
GRIFF DAVIES
ARCHITECTURAL DESIGN
AND CONSERVATION LTD

01753 646611
01753 646612
01753 646613
01753 646614
01753 646615
01753 646616
01753 646617
01753 646618
01753 646619
01753 646620
01753 646621
01753 646622
01753 646623
01753 646624
01753 646625
01753 646626
01753 646627
01753 646628
01753 646629
01753 646630
01753 646631
01753 646632
01753 646633
01753 646634
01753 646635
01753 646636
01753 646637
01753 646638
01753 646639
01753 646640
01753 646641
01753 646642
01753 646643
01753 646644
01753 646645
01753 646646
01753 646647
01753 646648
01753 646649
01753 646650
01753 646651
01753 646652
01753 646653
01753 646654
01753 646655
01753 646656
01753 646657
01753 646658
01753 646659
01753 646660
01753 646661
01753 646662
01753 646663
01753 646664
01753 646665
01753 646666
01753 646667
01753 646668
01753 646669
01753 646670
01753 646671
01753 646672
01753 646673
01753 646674
01753 646675
01753 646676
01753 646677
01753 646678
01753 646679
01753 646680
01753 646681
01753 646682
01753 646683
01753 646684
01753 646685
01753 646686
01753 646687
01753 646688
01753 646689
01753 646690
01753 646691
01753 646692
01753 646693
01753 646694
01753 646695
01753 646696
01753 646697
01753 646698
01753 646699
01753 646700



Proposed conversion of Tre'r Ddol Chapel into holiday accommodation for Mr Robert Redshaw
proposed internal section BB scale 1:100

 **RICS**
GRIFF DAVIES
ARCHITECTURAL DESIGN
AND CONSERVATION LTD
Chartered Building Surveyors
Chartered Architects
Chartered Conservation Practitioners
Chartered Planning Practitioners
Chartered Quantity Surveyors
Chartered Surveyors
Chartered Valuers
Chartered Engineers
Chartered Environmentalists
Chartered Geologists
Chartered Geographers
Chartered Horticulturists
Chartered Landscape Architects
Chartered Librarians
Chartered Mathematicians
Chartered Meteorologists
Chartered Physicists
Chartered Professional Engineers
Chartered Professional Engineers (Civil)
Chartered Professional Engineers (Mechanical)
Chartered Professional Engineers (Structural)
Chartered Professional Engineers (Transport)
Chartered Professional Engineers (Water, Maritime and Offshore)
Chartered Professional Engineers (Electrical)
Chartered Professional Engineers (Information Technology)
Chartered Professional Engineers (Telecommunications)
Chartered Professional Engineers (Petroleum)
Chartered Professional Engineers (Aerospace)
Chartered Professional Engineers (Automotive)
Chartered Professional Engineers (Marine)
Chartered Professional Engineers (Agricultural, Biological and Food)
Chartered Professional Engineers (Chemical)
Chartered Professional Engineers (Energy)
Chartered Professional Engineers (Manufacturing)
Chartered Professional Engineers (Materials)
Chartered Professional Engineers (Nuclear)
Chartered Professional Engineers (Oceanic)
Chartered Professional Engineers (Railway)
Chartered Professional Engineers (Transportation)
Chartered Professional Engineers (Water, Maritime and Offshore)
Chartered Professional Engineers (Aerospace)
Chartered Professional Engineers (Automotive)
Chartered Professional Engineers (Marine)
Chartered Professional Engineers (Agricultural, Biological and Food)
Chartered Professional Engineers (Chemical)
Chartered Professional Engineers (Energy)
Chartered Professional Engineers (Manufacturing)
Chartered Professional Engineers (Materials)
Chartered Professional Engineers (Nuclear)
Chartered Professional Engineers (Oceanic)
Chartered Professional Engineers (Railway)
Chartered Professional Engineers (Transportation)
Chartered Professional Engineers (Water, Maritime and Offshore)



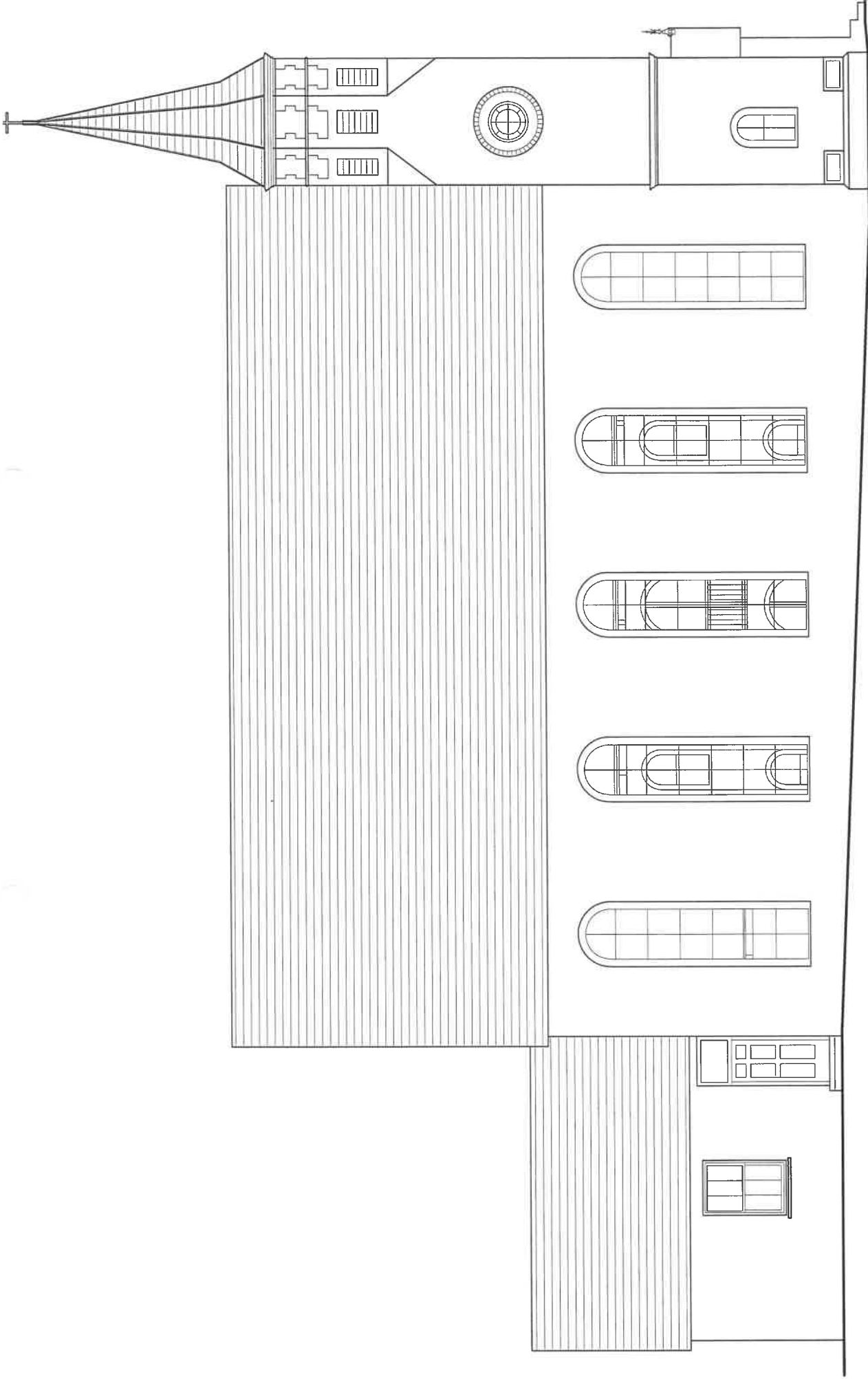
Proposed conversion of Tre'r Ddol Chapel into holiday accommodation for Mr Robert Redshaw
proposed external elevation scale 1:100



RICS

**GRIFF DAVIES
ARCHITECTURAL DESIGN
AND CONSERVATION LTD**

Griffith Morgan Davies Dip.S.CEM, Dip.BMig Cons (RICS) MRICS, IHBC
Chartered Building Surveyor, Chartered Town Planner, Architectural Technologist & Historic Building Conservator
MEMBER OF THE RICS BUILDING CONSERVATION GROUP
VAT Reg. No. 270262424



Proposed conversion of Tre'r Ddol Chapel into holiday accommodation for Mr Robert Redshaw
proposed external elevation scale 1:100

GRIFF DAVIES
ARCHITECTURAL DESIGN
AND CONSERVATION LTD



Griffith Morgan Davies Architects Ltd, 101, Bldg. Core (RDC) Market, 118C
Chancel Building, Stanning Lane, Cardiff, CF11 1JG
MEMBER OF THE RICS BUILDING CONSERVATION GROUP
www.griffd.com

