

St. Illtyd's Church, Llantood, Pembrokeshire.

Archaeological Building Investigation & Recording



By

Richard Scott Jones (*BA, MA, MCIfA*)

December 2019

HRSWales
Report No: 213 (Part 1)

St. Illtyd's Church, Llantood, Pembrokeshire.

By

Richard Scott Jones (*BA Hons, MA, MCIfA*)

Prepared for:

Mr. Llyr Evans
Llyr Evans Planning Ltd
Llantood Farm,
Llantood,
Cardigan,
Pembrokeshire

On behalf of:

Dr Ieuan & Nia Davies & Evans

Date:

December 2019

HRSW Report No: 213 (Part 1)



Contents

i) List of Illustrations and Photo plates

Executive Summary	Page i
1. Introduction	Page 01
2. Methodology and Consultations	Page 02

Appendix I: Figures

Appendix II: Photo plates

Appendix III: Archive Cover Sheet

Copyright Notice:

Heritage Recording Services Wales retain copyright of this report under the Copyright, Designs and Patents Act, 1988, and have granted a licence to Dr Ieuan & Nia Davies & Evans to use and reproduce the material contained within.

The Ordnance Survey have granted Heritage Recording Services Wales a Copyright Licence (No. 100052823) to reproduce map information; Copyright remains otherwise with the Ordnance Survey.

i) List of Illustrations

Figures

Fig 01: Location map (OS Landranger 50,000).

Fig 02: Location Map (OS Explorer 1:25,000).

Fig 03: Site Block Plan

Fig 04: Existing North and West Facing Elevations.

Fig 05: Existing South and East Facing Elevations.

Fig 06: Photo Index Plan - Exterior

Fig 07: Photo Index Plan - Interior

Photo Plates

Plates 01 - 02: General wider landscape views

Plates 03 - 04: General wider landscape views

Plates 05 - 06: Exterior views

Plates 07 - 08: Exterior views

Plates 09 - 10: Exterior views

Plates 11 - 12: Exterior views

Plates 13 - 18: Exterior views

Plates 19 - 26: Exterior views and details

Plates 27 - 35: Entrance porch

Plates 36 - 39: Internal features

Plates 40 - 43: Internal views - Nave

Plates 44 - 47: Internal views - Nave and Chancel

Plates 48 - 51: Internal views - Nave and Chancel Roof. Pulpit

Plates 52 - 55: Internal views - Memorial plaque, pews and internal features

Plates 56 - 61: Internal views - Pews and internal features

Plates 62 - 65: Vestry details.

Executive Summary

The following report presents the results of a program of building recording, equivalent to Historic England Level I, of the standing remains of St. Illtyd's Church, Llantood, Pembrokeshire, prior to proposed development.

This Level I recording work was requested as part of a planning condition by Pembrokeshire County Council prior to any works commencing at the property in order to make a lasting archive of a significant building.

1 Introduction

- 1.1 The following report presents the results of a program of building recording, equivalent to Historic England Level I, of the standing remains of St. Illtyd's Church, Llantood, Pembrokeshire, prior to proposed development changes.
- 1.2 This Level I recording work was requested as part of a planning condition by Pembrokeshire County Council prior to any works commencing at the property in order to make a lasting archive of a significant building.
- 1.3 The specific objectives of this work were to:
- Appropriate a series high resolution photographs of the standing remains of the church, both exterior and interior prior to development proposals for a change of use to a dwelling.
- 1.4 The Technical Appendices for this Chapter contains the following information:
- *Appendix I: Figures;*
 - *Appendix II: Photographs (selected number only)*
 - *Appendix III: Archive Cover Sheet*
- 1.5 The photographic work entailed a site visit to St. Illtyd's Church, Llantood, Pembrokeshire to appropriate the required photographs.

Site Location & Description

- 1.6 St. Illtyd's Church is situated on elevated ground at a height of 144m AOD (centered on SN 15632 41910) immediately west of Llantood Farm, on the outskirts of the small hamlet and parish of Llantood, positioned approximately 4km southwest of Cardigan and approximately 4km west of Cilgerran in the county of Pembrokeshire.
- 1.7 The church itself is dedicated to the 5th Century saint, St. Illtud, who was the founder of a teaching monastery at Llanilltud Fawr in the Vale of Glamorgan. Although the existing church was built in the late 19th century, its foundation and the churchyard have possible early medieval origins. Only approximately 220 meters east from St. Illtyd's Church is the scheduled monument of Castell Pen-yr-Allt, a Norman motte and bailey castle.

Development Proposals

- 1.8 The proposal for the church is for a change of use to a residential dwelling, as well as the erection of a detached garage and associated works, including services, pathway and parking area.

Planning Background

- 1.9 On 27th September 2019 planning permission was granted by Pembrokeshire county council to carrying out the proposed development, but with the following archaeological and heritage conditions (No's. 3 and 4):

Condition 3:

"Prior to the commencement of development, a photographic survey of the site shall be undertaken in accordance with guidelines provided by the Local Planning Authority's archaeological advisors - Dyfed Archaeological Trust Development Management. The resulting photographs shall be approved by the planning authority prior to the commencement of the development and deposited with the regional Historic Environment Record, held and maintained by the Dyfed Archaeological Trust, Corner House, 6 Carmarthen Street, Llandeilo, Carmarthenshire, SA19 6AE, (Tel 01558-823121).

Reason: *To ensure the recording of matters of archaeological interest to accord with Policy GN.38 of the Local Development Plan for Pembrokeshire (adopted 28 February 2013)."*

- 1.10 HRS Wales were commissioned Llyr Evans, acting on behalf of Dr Ieuan & Nia Davies & Evans, to undertake the required building recording.

2 Methodology and Consultations

Methodology of Baseline Survey

- 2.1 A Level I record is essentially a basic visual record, supplemented by the minimum of information needed to identify the building's location, age and type. This is the simplest record, not normally an end in itself but contributing to a wider aim. Level I surveys will generally be of exteriors only, although they may include superficial interior inspection for significant features. Only if circumstances and objectives allow will any drawings be produced, and these are likely to take the form of sketches.
- 2.2 In accordance with the ClfA's *Standards and guidance*, the purpose of the photographic record is to examine a specified building, structure or complex, and its setting, in order to inform:
- To seek a better understanding, compile a lasting record, analyse the findings/record, and then disseminate the results.
- 2.6 All work was conducted in compliance with the *Codes of Practice* of the Chartered Institute for Archaeologists (ClfA 2010).

Photographs

- 2.7 Photographs were taken in digital format, using an 18 mega-pixel DSLR camera, with photographs stored in RAW format. All RAW formats were then exported into TIFF files in preparation for archiving.

Archive

- 2.8 The photo archive has been prepared in accordance with the *National Standards for Wales for Collecting and Depositing Archaeological Archives* produced by the Federation of Museums and Art Galleries of Wales and in accordance with the *Guidance for Submission of Data to the Welsh Historic Environment Records* (Welsh Archaeological Trusts 2018). The photo archive comprises all photographs appropriated during the fieldwork with only a selected number represented in this report. The full photo archive will be deposited with Dyfed Archaeological Trust and the RCAHMW in Aberystwyth.

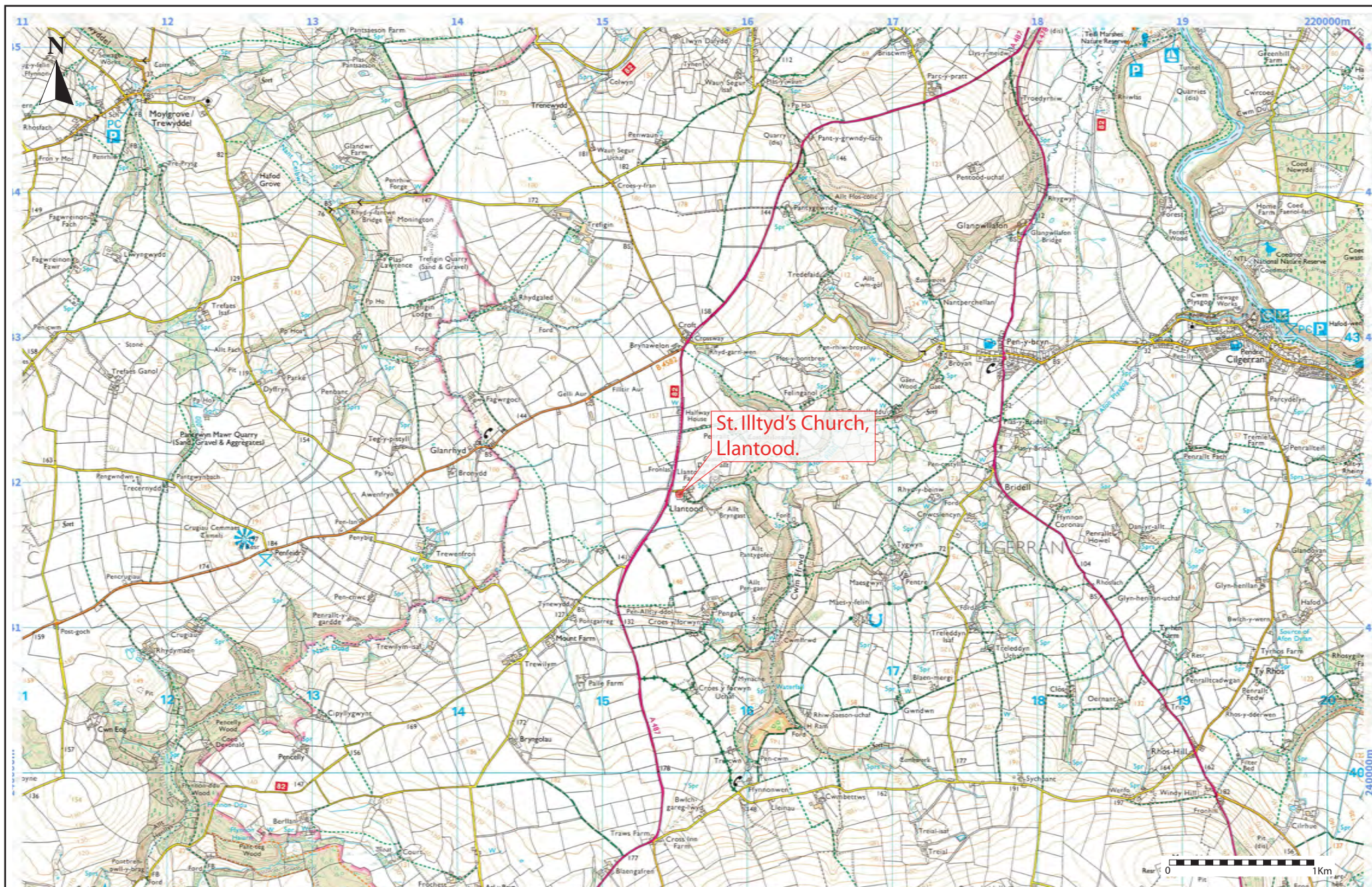
APPENDIX I:

Figures



Project Title: St. Illtyd's Church, Llantood, Cardigan, Pembrokeshire,	
Date: December 2019	Approx. Scale (@ A4):
Drawn by:	Drawing No.

Figure 1.
Location Map (OS Landranger 1:50,000)



Project Title: St. Illtyd's Church, Llantood, Cardigan, Pembrokeshire

Date: December 2019

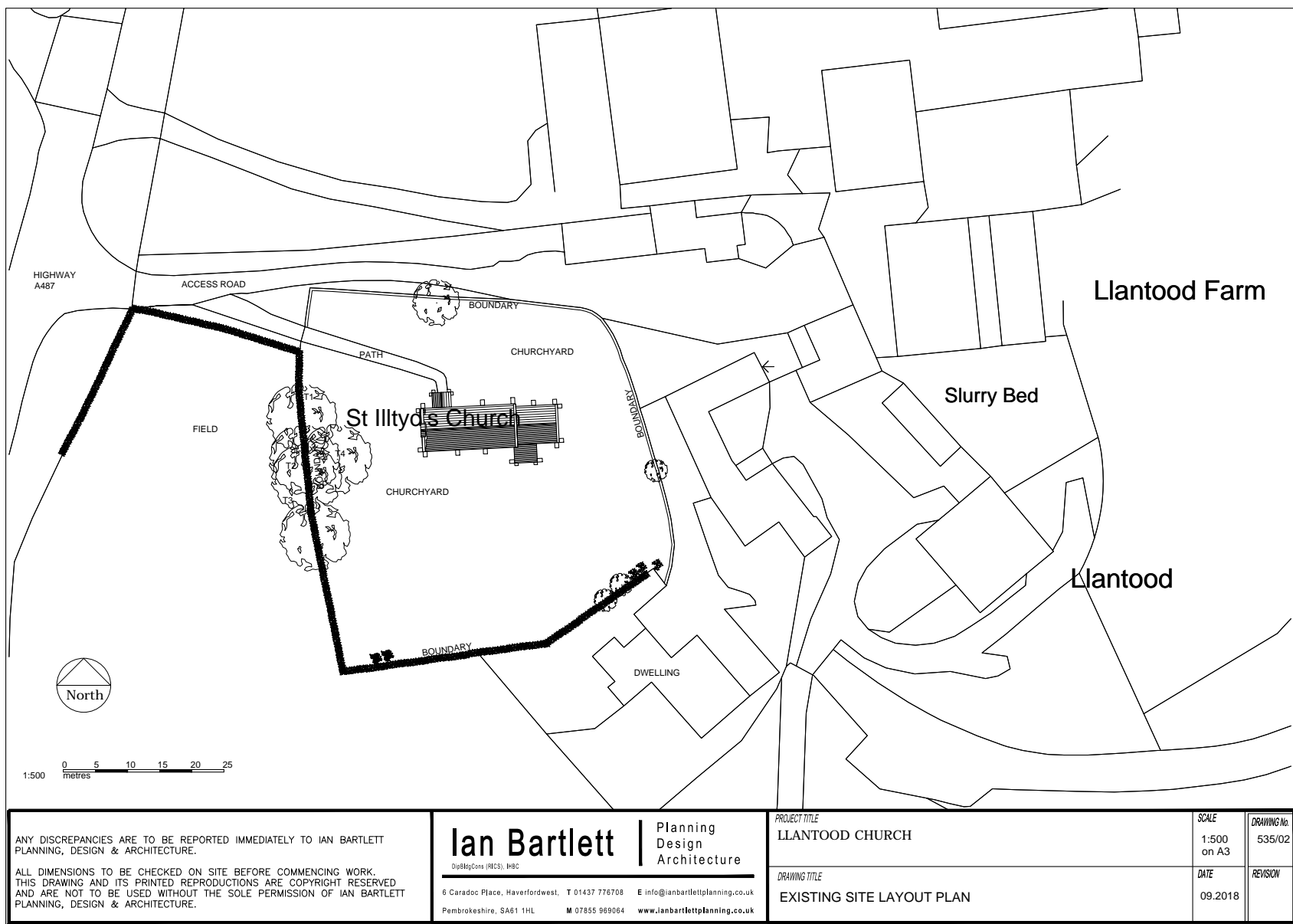
Drawn by:

Approx. Scale (@ A4):

Drawing No.

Figure 2.

Location Map (OS Explorer 1:25,000)



Project Title: St. Illtyd's Church, Llantood, Cardigan, Pembrokeshire

Date: December 2019

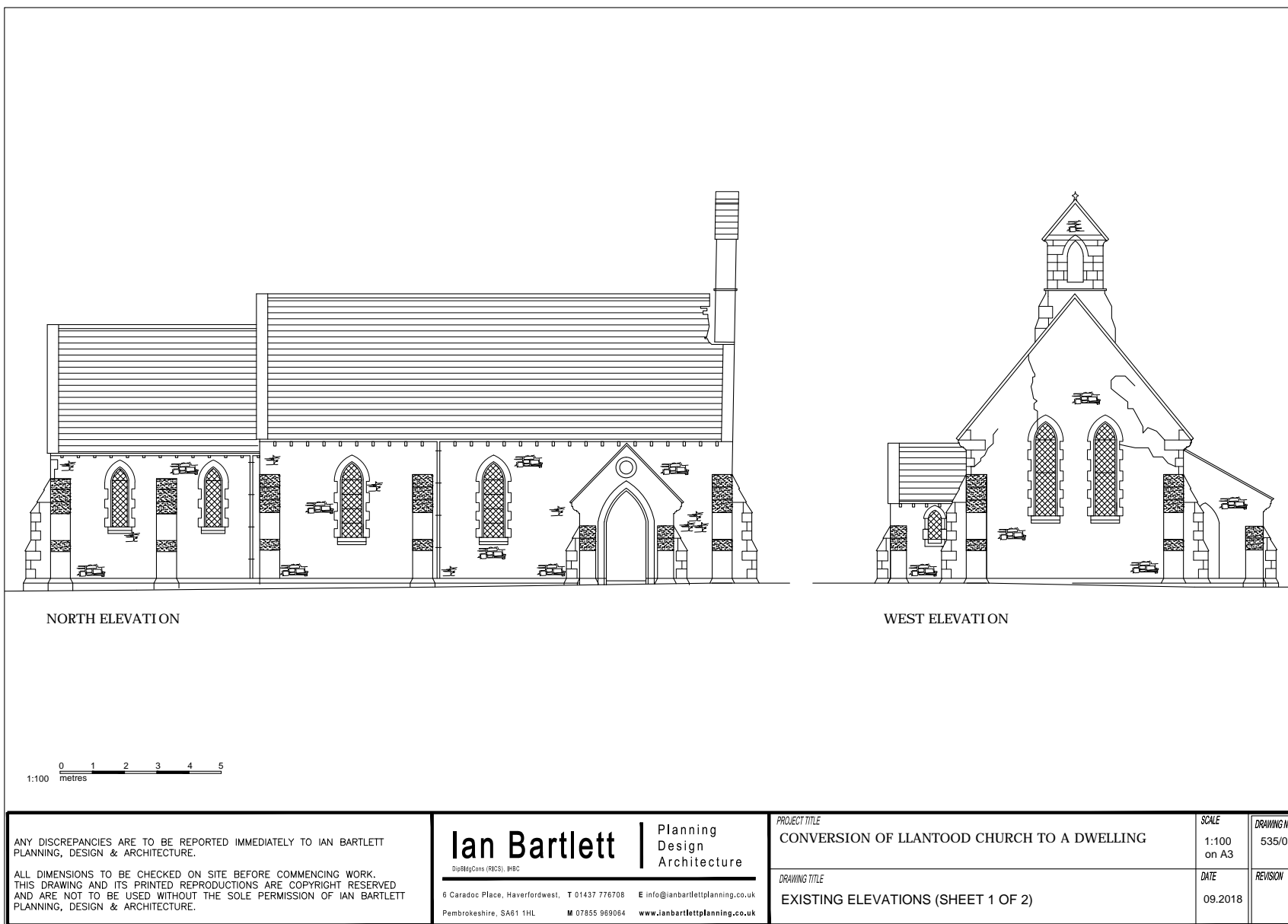
Approx. Scale (@ A4):

Drawn by:

Drawing No.

Figure 3.

Site location plan and block plan (Architects plan).



Project Title: London House, Beach Road, Penclawdd, Swansea

Date: May 9th 2019

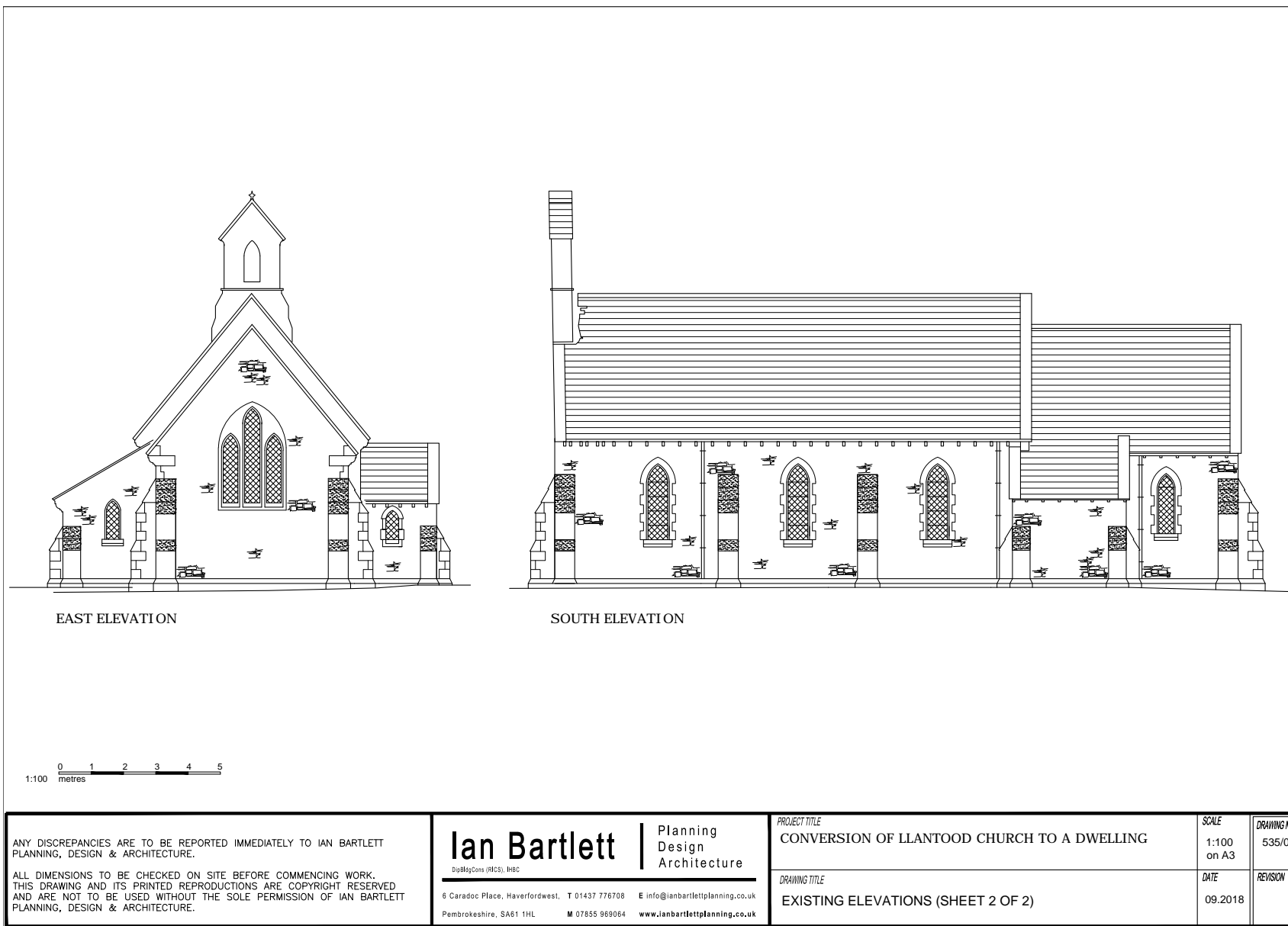
Drawn by:

Approx. Scale (@ A4):

Drawing No.

Figure 4.

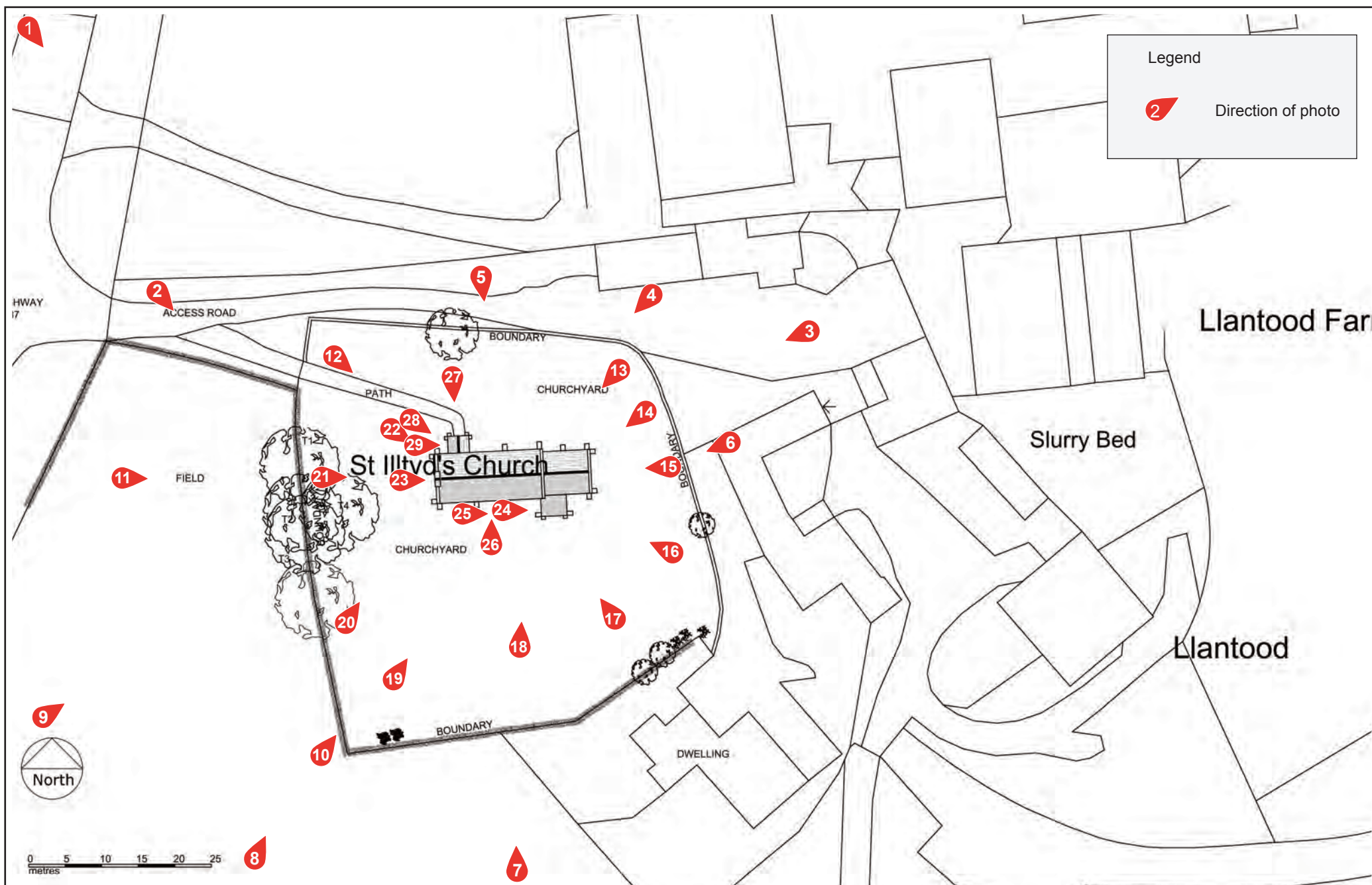
Existing External North and West Facing Elevations Plan (*Architects drawing*).



Project Title: London House, Beach Road, Penclawdd, Swansea	
Date: May 9th 2019	Approx. Scale (@ A4):
Drawn by:	Drawing No.

Figure 5.

Existing External South and East Facing Elevations Plan (*Architects drawing*).



Project Title: St. Illtyd's Church, Llantood, Cardigan, Pembrokeshire

Date: December 2019

Drawn by:

Approx. Scale (@ A4):

Drawing No.

Figure 6.

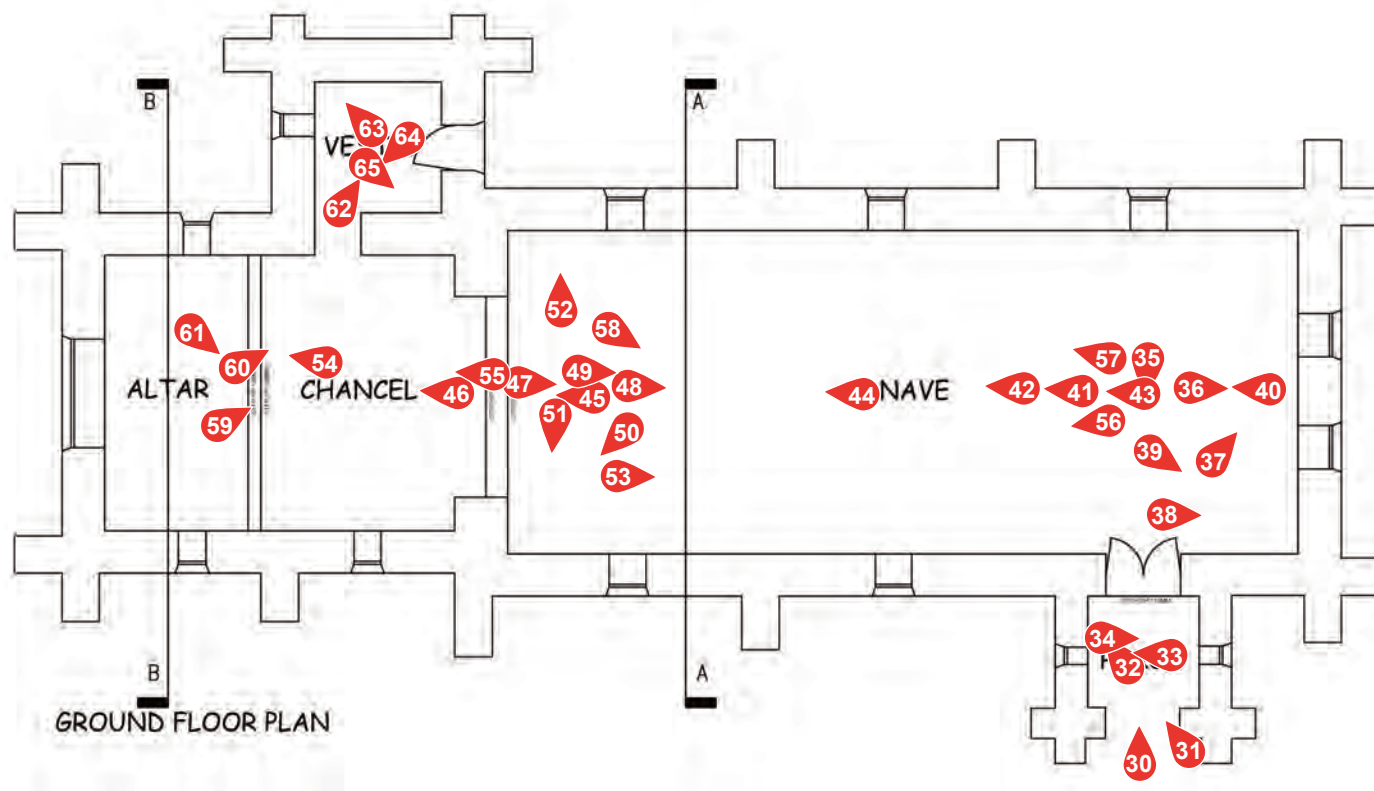
Photo Index Plan - Exterior views



Legend



Direction of photo



Project Title: St. Illtyd's Church, Llantood, Cardigan, Pembrokeshire

Date: December 2019

Drawn by:

Approx. Scale (@ A4):

Drawing No.

Figure 7.

Photo Index Plan - Interior views

APPENDIX II:

Photo plates



Plate 01. St. Illtyd's Church, Llantood, Cardigan, Pembrokeshire. Looking southeast.



Plate 02. St. Illtyd's Church, Llantood, Cardigan, Pembrokeshire. Looking southeast.


Project Title: St. Illtyd's Church, Llantood, Cardigan, Pembrokeshire		Photo Plates 01 - 02	
Date Taken: December 2019	Approx. Scale (@ A4):		
Appropriated by: RSJ	Drawing No.		



Plate 03. St. Illtyd's Church, Llantood, Cardigan, Pembrokeshire. Looking westwards.



Plate 04. St. Illtyd's Church, Llantood, Cardigan, Pembrokeshire. Looking southwest.


Project Title: St. Illtyd's Church, Llantood, Cardigan, Pembrokeshire		Photo Plates 03 - 04	
Date Taken: December 2019	Approx. Scale (@ A4):		
Appropriated by: RSJ	Drawing No.		



Plate 05. St. Illtyd's Church, Llantood, Cardigan, Pembrokeshire. Looking south.



Plate 06. St. Illtyd's Church, Llantood, Cardigan, Pembrokeshire. Looking west.


Project Title: St. Illtyd's Church, Llantood, Cardigan, Pembrokeshire		Photo Plates 05 - 06	
Date Taken: December 2019	Approx. Scale (@ A4):		
Appropriated by: RSJ	Drawing No.		



Plate 07. St. Illtyd's Church, Llantood, Cardigan, Pembrokeshire. Looking north.



Plate 08. St. Illtyd's Church, Llantood, Cardigan, Pembrokeshire. Looking northwards..


Project Title: St. Illtyd's Church, Llantood, Cardigan, Pembrokeshire		Photo Plates 07 - 08	
Date Taken: December 2019	Approx. Scale (@ A4):		
Appropriated by: RSJ	Drawing No.		



Plate 09. St. Illtyd's Church, Llantood, Cardigan, Pembrokeshire. Looking northeast.



Plate 10. St. Illtyd's Church, Llantood, Cardigan, Pembrokeshire. Looking northeast.


Project Title: St. Illtyd's Church, Llantood, Cardigan, Pembrokeshire		Photo Plates 09 - 10	
Date Taken: December 2019	Approx. Scale (@ A4):		
Appropriated by: RSJ	Drawing No.		



Plate 11. St. Illtyd's Church, Llantood, Cardigan, Pembrokeshire. Looking west.



Plate 12. St. Illtyd's Church, Llantood, Cardigan, Pembrokeshire. Looking southeast.


Project Title: St. Illtyd's Church, Llantood, Cardigan, Pembrokeshire		Photo Plates 11 - 12	
Date Taken: December 2019	Approx. Scale (@ A4):		
Appropriated by: RSJ	Drawing No.		



Plate 13. St. Illtyd's Church, Llantood, Cardigan, Pembrokeshire. Looking west.



Plate 14. St. Illtyd's Church, Llantood, Cardigan, Pembrokeshire. Looking west.



Plate 15. St. Illtyd's Church, Llantood, Cardigan, Pembrokeshire. Looking west.



Plate 16. St. Illtyd's Church, Llantood, Cardigan, Pembrokeshire. Looking Northwest.



Plate 17. St. Illtyd's Church, Llantood, Cardigan, Pembrokeshire. Looking northwest..



Plate 18. St. Illtyd's Church, Llantood, Cardigan, Pembrokeshire. Looking north.


Project Title: St. Illtyd's Church, Llantood, Cardigan, Pembrokeshire		Photo Plates 13 - 18	
Date Taken: December 2019	Approx. Scale (@ A4):		
Appropriated by: RSJ	Drawing No.		



Plate 19. St. Illtyd's Church, Llantood, Cardigan, Pembrokeshire. Looking northwards.



Plate 20. St. Illtyd's Church, Llantood, Cardigan, Pembrokeshire. Looking northeast.



Plate 21. St. Illtyd's Church, Llantood, Cardigan, Pembrokeshire. Looking east.



Plate 22. St. Illtyd's Church, Llantood, Cardigan, Pembrokeshire. West wall and belfry. Looking southeast.



Plate 23. St. Illtyd's Church, Llantood, Cardigan, Pembrokeshire. Belfry. Looking east.



Plate 24. St. Illtyd's Church, Llantood, Cardigan, Pembrokeshire. Vestry. Looking east.



Plate 25. St. Illtyd's Church, Llantood, Cardigan, Pembrokeshire. Vestry and support buttress. Looking east.



Plate 26. St. Illtyd's Church, Llantood, Cardigan, Pembrokeshire. Window detail in south wall.

Project Title: St. Illtyd's Church, Llantood, Cardigan, Pembrokeshire			Photo Plates	
Date Taken:	December 2019	Approx. Scale (@ A4):	19 - 26	
Appropriated by:	RSJ	Drawing No.		



Plate 27. St. Illtyd's Church, Llantood, Cardigan, Pembrokeshire. Entrance porch. Looking south.



Plate 28. St. Illtyd's Church, Llantood, Cardigan, Pembrokeshire. Entrance porch. Looking east.



Plate 29. St. Illtyd's Church, Llantood, Cardigan, Pembrokeshire. Entrance porch. Looking east.



Plate 30. St. Illtyd's Church, Llantood, Cardigan, Pembrokeshire. Porch entrance. Looking south.



Plate 31. St. Illtyd's Church, Llantood, Cardigan, Pembrokeshire. Porch. Side wall. Looking southeast.



Plate 32. St. Illtyd's Church, Llantood, Cardigan, Pembrokeshire. Porch. Detail of stoup. Looking southeast.



Plate 33. St. Illtyd's Church, Llantood, Cardigan, Pembrokeshire. Window in porch. Looking east.



Plate 34. St. Illtyd's Church, Llantood, Cardigan, Pembrokeshire. Window in porch. Looking west.



Plate 35. St. Illtyd's Church, Llantood, Cardigan, Pembrokeshire. Interior door. Looking north.

Project Title: St. Illtyd's Church, Llantood, Cardigan, Pembrokeshire

Date Taken: December 2019

Approx. Scale (@ A4):

Appropriated by:

RSJ

Drawing No.

Photo Plates

27 - 35

Heritage
Recording Services Wales



Plate 36. St. Illtyd's Church, Llantood, Cardigan, Pembrokeshire.
Remains of 13th Century gravestone fixed against west wall of Nave.
Looking east.



Plate 37. St. Illtyd's Church, Llantood, Cardigan, Pembrokeshire.
Remains of 13th Century gravestone fixed against west wall of Nave.
Looking southeast.



Plate 38. St. Illtyd's Church, Llantood, Cardigan, Pembrokeshire.
Remains of victorian bell from belfry.



Plate 39. St. Illtyd's Church, Llantood, Cardigan, Pembrokeshire.
Remains of font and pedestal.


Project Title: St. Illtyd's Church, Llantood, Cardigan, Pembrokeshire		Photo Plates 26 - 39	
Date Taken: December 2019	Approx. Scale (@ A4):		
Appropriated by: RSJ	Drawing No.		



Plate 40. St. Illtyd's Church, Llantood, Cardigan, Pembrokeshire.
Interior of Nave. Looking east.



Plate 41. St. Illtyd's Church, Llantood, Cardigan, Pembrokeshire.
Interior of Nave. Looking east.



Plate 42. St. Illtyd's Church, Llantood, Cardigan, Pembrokeshire.
Interior of Nave. Looking east.



Plate 43. St. Illtyd's Church, Llantood, Cardigan, Pembrokeshire.
Interior of Nave. Looking east.


Project Title: St. Illtyd's Church, Llantood, Cardigan, Pembrokeshire		Photo Plates 40 - 43	
Date Taken: December 2019	Approx. Scale (@ A4):		
Appropriated by: RSJ	Drawing No.		



Plate 44. St. Illtyd's Church, Llantood, Cardigan, Pembrokeshire.
Interior of Nave. Looking toward Chancel. Looking east.



Plate 45. St. Illtyd's Church, Llantood, Cardigan, Pembrokeshire.
Interior of Chancel. Looking east.



Plate 46. St. Illtyd's Church, Llantood, Cardigan, Pembrokeshire.
Interior of Chancel. Looking east.



Plate 47. St. Illtyd's Church, Llantood, Cardigan, Pembrokeshire.
Interior of Nave. Looking west.


Project Title: St. Illtyd's Church, Llantood, Cardigan, Pembrokeshire		Photo Plates 44 - 47	
Date Taken: December 2019	Approx. Scale (@ A4):		
Appropriated by: RSJ	Drawing No.		



Plate 48. St. Illtyd's Church, Llantood, Cardigan, Pembrokeshire.
Interior of Nave. Looking east.



Plate 49. St. Illtyd's Church, Llantood, Cardigan, Pembrokeshire.
Interior of Chancel, Roof detail. Looking west.



Plate 50. St. Illtyd's Church, Llantood, Cardigan, Pembrokeshire.
Interior of Chancel. Detail of pulpit.



Plate 51. St. Illtyd's Church, Llantood, Cardigan, Pembrokeshire.
Interior of Nave. Detail of pulpit. Looking north.

Project Title: St. Illtyd's Church, Llantood, Cardigan, Pembrokeshire

Date Taken: December 2019

Appropriated by: RSJ

Approx. Scale (@ A4):

Drawing No.

Photo Plates

48 - 51

Heritage
Recording Services Wales



Plate 52. St. Illtyd's Church, Llantood, Cardigan, Pembrokeshire. Interior of Nave. Detail of memorial plaque to John and Mary Bowen of Tredevoid, against south wall. Looking south.



Plate 53. St. Illtyd's Church, Llantood, Cardigan, Pembrokeshire. Interior of Chancel. Pews. Looking west.



Plate 54. St. Illtyd's Church, Llantood, Cardigan, Pembrokeshire. Interior of Chancel and Altar. Looking southeast.



Plate 55. St. Illtyd's Church, Llantood, Cardigan, Pembrokeshire. Interior of Chancel. Looking east.


Project Title: St. Illtyd's Church, Llantood, Cardigan, Pembrokeshire		Photo Plates 52 - 55	
Date Taken: December 2019	Approx. Scale (@ A4):		
Appropriated by: RSJ	Drawing No.		



Plate 56. St. Illtyd's Church, Llantood, Cardigan, Pembrokeshire. Interior of Nave. Looking Northeast.



Plate 57. St. Illtyd's Church, Llantood, Cardigan, Pembrokeshire. Interior of Nave. Looking southwest.



Plate 58. St. Illtyd's Church, Llantood, Cardigan, Pembrokeshire. Interior of Nave. Looking Northeast.



Plate 59. St. Illtyd's Church, Llantood, Cardigan, Pembrokeshire. Interior of Chancel. Looking Southeast.



Plate 60. St. Illtyd's Church, Llantood, Cardigan, Pembrokeshire. Interior of Nave and Chancel. Looking southwest.



Plate 61. St. Illtyd's Church, Llantood, Cardigan, Pembrokeshire. Interior of Nave and Chancel. Looking northwest.


Project Title: St. Illtyd's Church, Llantood, Cardigan, Pembrokeshire		Photo Plates 56 - 61	
Date Taken: December 2019	Approx. Scale (@ A4):		
Appropriated by: RSJ	Drawing No.		



Plate 62. St. Illtyd's Church, Llantood, Cardigan, Pembrokeshire.
Interior of Vestry. Looking southwest.




Plate 63. St. Illtyd's Church, Llantood, Cardigan, Pembrokeshire.
Gravestone fixed into wall of Vestry. Dedicated to Lewes family member 1749. Looking southwest.



Plate 64. St. Illtyd's Church, Llantood, Cardigan, Pembrokeshire.
Gravestone fixed into wall of Vestry. Dedicated to John and Jane Bowen 1776. Looking northeast.



Plate 65. St. Illtyd's Church, Llantood, Cardigan, Pembrokeshire.
Gravestone fixed into wall of Vestry. Dedications to Lloyd and Lewes family members 1711 - 1742. Looking northwest.

Project Title: St. Illtyd's Church, Llantood, Cardigan, Pembrokeshire		Photo Plates 62 - 65	
Date Taken: December 2019	Approx. Scale (@ A4):		
Appropriated by: RSJ	Drawing No.		

APPENDIX III:
Archive Cover Sheet

ARCHIVE COVER SHEET

St. Illtyd's Church, Llantood, Cardigan, Pembrokeshire

ARCHIVE DESTINATION - RCAHMW

Site Name:	St. Illtyd's Church, Llantood, Cardigan, Pembrokeshire
Site Code:	SIC/2019/ABIR
PRN:	5317/17347
NPRN:	
SM No.	
Other Ref No.	HRSW Rpt No. 213
NGR:	SN 15632 41910
Site Type:	19th Century Church / Medieval foundation
Project Type:	Archaeological Building Investigation & Recording
Project Manager:	Richard Scott Jones
Project Date(s):	December 2019
Categories Present:	None
Location of Original Archive:	RCAHMW
Location of Duplicate Archive:	Dyfed Archaeological Trust
Number of Find Boxes:	
Location of Finds:	
Museum Ref:	
Copyright:	HRS Wales
Restrictions to Access:	None



Egwyl, Llwyn-y-groes, Tregaron, Ceredigion SY25 6QE

Tel: 01570 493759 Fax: 08712 428171 E-mail: richard@hrswales.co.uk