

Dyfed

## CAMBRIAN MOUNTAINS ESA, HISTORIC MONITORING

BASELINE 1995

A

OS 1:10000 SHEET: <del>SO/SH</del> /SN 76	GRID REF: <del>SO/SH</del> /SN
PRN: 2048/5564 SITE NAME: Gwys yr Ychen Bannog / GARN GROW.	
AIR PHOTO No 650 - 52	LANDSCAPE TYPE: IIb
No GROUND PHOTOS: 8	
DATE SURVEYED: 29/11/95	SURVEYED BY: G A Hopwood
<p>ACCESS: Land owned by Miss F. Evans, Tynclomen, Tregaran. Tel: 01974 298333.</p> <p>Access through forestry to G-ref SN 7475 6175.</p> <p>Walk SW along side to 1<sup>st</sup> side on right, turn west, cross fence to reach trig point, monument 200m WNW.</p>	

B

<p><b>LAND COVER:</b></p> <p><b>SITE:</b> SNRG, Nardus, Agrostis - Fescue with some Vaccinium.</p> <p><b>HALO:</b> SNRG, as above plus calluna.</p>
---

## CAMBRIAN MOUNTAINS ESA, HISTORIC MONITORING

BASELINE 1995

PRN 2048/5564

C

### LAND MANAGEMENT:

**SITE:** Unimproved grazing. No livestock on site when visited.

**HALO:** Unimproved grazing.

D

### DESCRIPTION/CONDITION OF MONUMENT:

A/ CAIRN.

Stone cairn some 10m in diameter by 1.5m high. Central area has been excavated and exposed. Burial chamber seems almost intact with a large 'cap stone' over the burial pit. One other large stone - upright but slightly inclined forms part of the internal structure.

E

### POTENTIALLY THREATENING FACTORS: (see Table 1)

Damage from livestock rubbing / trampling, dislodging stones etc. No human access so both features fairly well protected. Main problem probably isolated + exposed location and damage from elements. Damage to cairn extensive but not recent.

F

**RATE OF DECAY:**

**STABLE**

**SLOW**

**RAPID**

**CONTINUED?**

**YES**

**NO**

# CAMBRIAN MOUNTAINS ESA, HISTORIC MONITORING

BASELINE 1995

SUPPLEMENTARY NOTES TO FIELD SURVEYS

PAGE...! OF...! PRN: 2048/5564

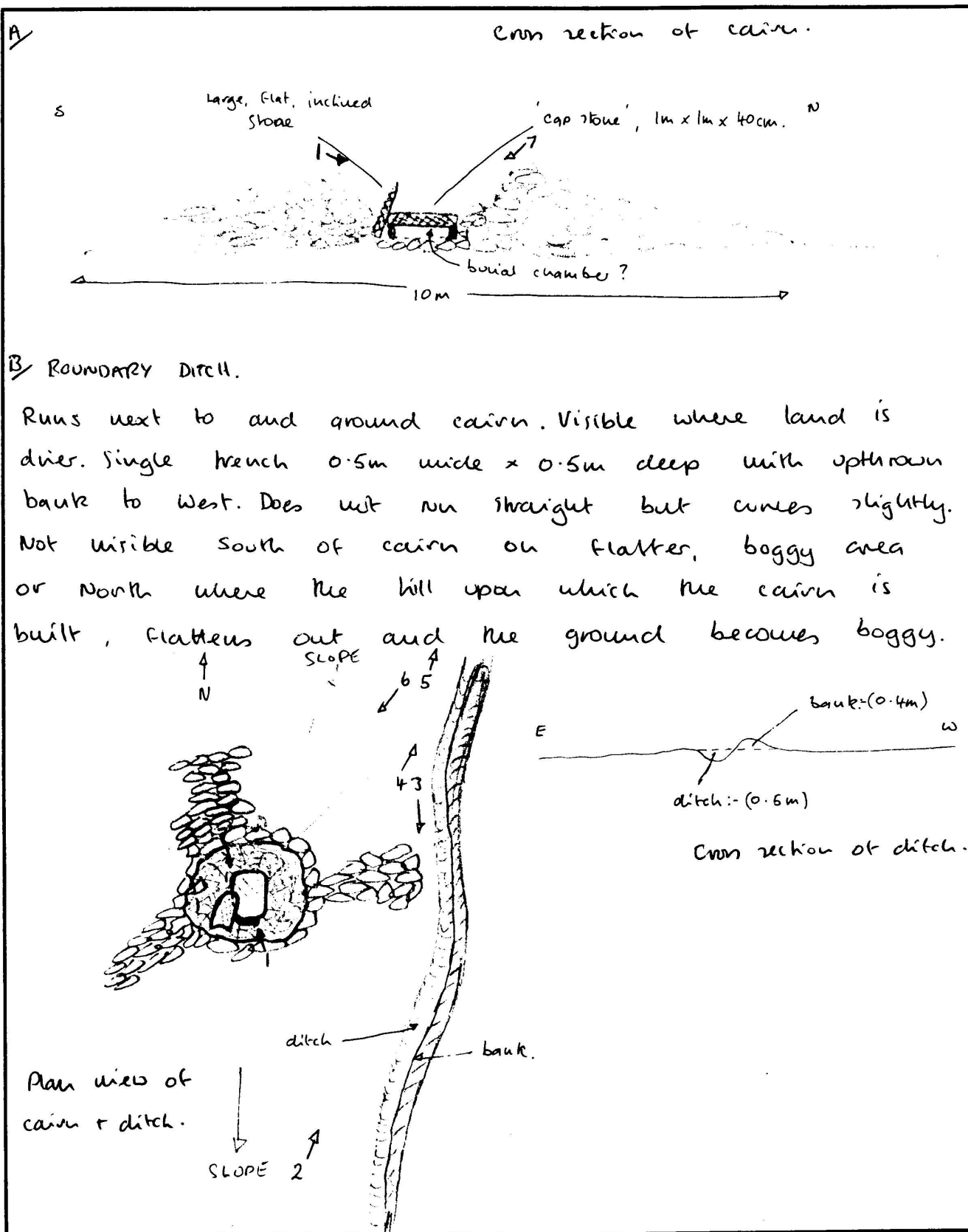


TABLE 1

CAMBRIAN MOUNTAINS ESA, HISTORIC MONITORING, BASELINE 1995

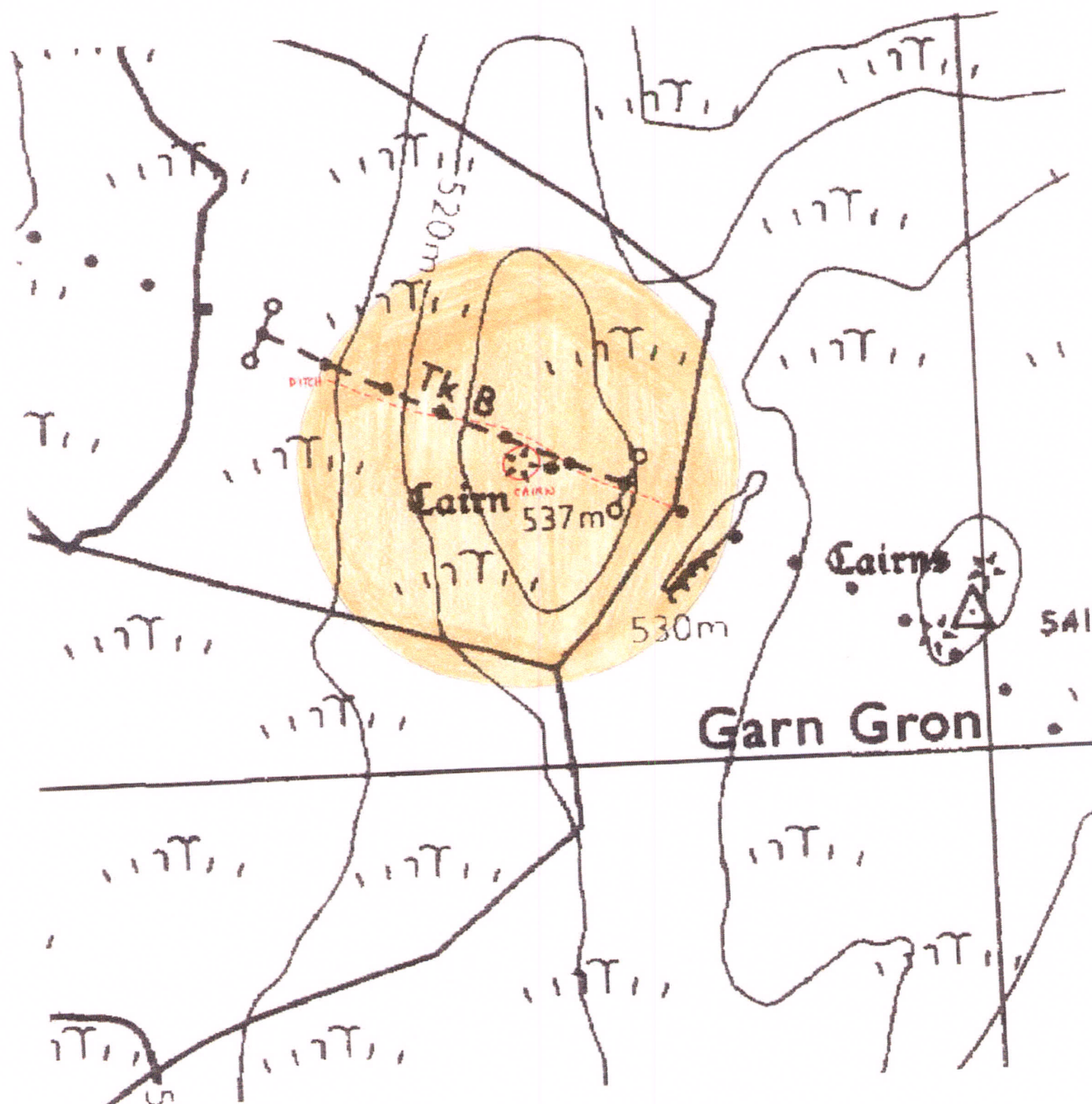
PRN 2048/ 5564

POTENTIALLY THREATENING FACTORS			
AGENT	PRESENT	ACTION	SIGNIFICANCE
ANIMALS	Y N	Burrowing - badgers, foxes, rabbits	Damage/disturbance to underground artefacts
	Y N	Overgrazing - cattle, horses, sheep	Loss of vegetation cover/soil
	Y N	Poaching - cattle, horses, sheep	Damage to vegetation cover, leading to erosion
	Y N	Rubbing point/erosion focus point - cattle, horses, sheep	As above, plus possible damage to upstanding features
HUMAN	Y N	Demolition or removal of monument	Active removal of artefacts/monument
	Y N	Rubbish dumping	Infilling/contamination
	Y N	Trampling/poaching - on footpaths/desire lines	Loss of vegetation cover/soil damage resulting in erosion
	Y N	Mountain bikes/Motorcross etc	As above
	Y N	Deep ploughing/Drainage works/Building	Damage/disturbance of artefacts
	Y N	Shallow cultivation/reseeds	As above
	Y N	Tree/Scrub removal by uprooting	As above
	Y N	Scrub burning in bonfires	Intense heat at point source, damage to artefacts and alteration of soil profile
VEGETATION	Y N	Root damage - trees and scrub (especially where deep rooted - heavy crowns)	Damage/disturbance of artefacts
	Y N	Tree windthrow	Potential massive damage/disturbance
	Y N	Scrub encroachment - bracken, gorse, rhodedendron, thorn	Root or rhizome damage/disturbance (bracken least significant)
WEATHER/SITE FACTORS	Y N	High rainfall/windspeeds - exposure	Greater erosion risk than level, non exposed site
	Y N	High gradient	

2048\5564

Cambrian Mountains ESA

7380 6110



# CAMBRIAN MOUNTAINS ESA HISTORIC MONITORING RESURVEY 1999

A

OS 1:10,000 SHEET: SN/ <del>SO</del> /SH 76		GRID REF: SN/ <del>SO</del> /SH	
PRN: 2048/5564 SITE NAME: Gwys yr Ychen Bannog / Garn Cron.			
AIR PHOTO No: 650-852		LANDSCAPE TYPE: II b	
No GROUND PHOTOS: 8			
DATE RESURVEYED: 15/6/99.		RESURVEYED BY: W. Sauerfeld	

IF CHANGES TO ANY OF THE FOLLOWING HAVE OCCURRED SINCE THE BASELINE, DETAIL THESE CHANGES IN THE APPROPRIATE SECTION OF THE RESURVEY PROFORMA.

A:CHANGES TO ACCESS?

B:CHANGES TO LANDCOVER

C:CHANGES TO LAND MANAGEMENT

D:CHANGES IN DESCRIPTION/CONDITION OF MONUMENT

E:CHANGES IN POTENTIALLY THREATENING FACTORS

F:CHANGE IN RATE OF DECAY

NO <input checked="" type="checkbox"/>	YES
NO <input checked="" type="checkbox"/>	YES
NO	YES <input checked="" type="checkbox"/>
NO <input checked="" type="checkbox"/>	YES
NO <input checked="" type="checkbox"/>	YES
NO <input checked="" type="checkbox"/>	YES

A: ACCESS

Checked + 6/99

W. Sauerfeld 17/6/99.

CAMBRIAN MOUNTAINS ESA HISTORIC MONITORING RESURVEY 1999

PRN

B:LANDCOVER

SITE:

HALO:

C:LAND MANAGEMENT

SITE: Livestock were present on this visit (sheep).

HALO: As above.

D:DESCRIPTION/CONDITION OF MONUMENT

E: POTENTIALLY THREATENING FACTORS (see table 1)

F

RATE OF DECAY:

STABLE

SLOW

RAPID

CONTINUED?

YES

NO



CAMBRIAN MOUNTAINS ESA, HISTORIC MONITORING RESURVEY 1999

SUPPLEMENTARY NOTES TO FIELD SURVEYS

PAGE..... OF.... PRN:

POTENTIALLY THREATENING FACTORS			
AGENT	PRESENT	ACTION	SIGNIFICANCE
ANIMALS	Y N	Burrowing - badgers, foxes, rabbits	Damage/disturbance to underground artefacts
	Y N	Overgrazing - cattle, horses, sheep	Loss of vegetation cover/soil
	Y N	Poaching - cattle, horses, sheep	Damage to vegetation cover, leading to erosion
	<input checked="" type="radio"/> Y N	Rubbing point/erosion focus point - cattle, horses, sheep	As above, plus possible damage to upstanding features
HUMAN	Y N	Demolition or removal of monument	Active removal of artefacts/monument
	Y N	Rubbish dumping	Infilling/contamination
	Y N	Trampling/poaching - on footpaths/desire lines	Loss of vegetation cover/soil damage resulting in erosion
	Y N	Mountain bikes/Motorcross etc	As above
	Y N	Deep ploughing/Drainage works/Building	Damage/disturbance of artefacts
	Y N	Shallow cultivation/reseeds	As above
	Y N	Tree/Scrub removal by uprooting	As above
	Y N	Scrub burning in bonfires	Intense heat at point source, damage to artefacts and alteration of soil profile
VEGETATION	Y N	Root damage - trees and scrub (especially where deep rooted - heavy crowns)	Damage/disturbance of artefacts
	Y N	Tree windthrow	Potential massive damage/disturbance
	Y N	Scrub encroachment - bracken, gorse, rhododendron, thorn	Root or rhizome damage/disturbance (bracken least significant)
WEATHER/SITE FACTORS	<input checked="" type="radio"/> Y N	High rainfall/windspeeds - exposure	Greater erosion risk than level, non exposed site
	Y N	High gradient	