

# *Archaeology Wales*

## **Cwm Betws, Eglwysrw**

### **Archaeological Appraisal**



**By**

**Dr Iestyn Jones**

**Report No. 1096**

Archaeology Wales Limited,  
Rhos Helyg, Cwm Belan,  
Llanidloes, Powys SY18 6QF  
Telephone: 01686 440371  
E-mail: [admin@arch-wales.co.uk](mailto:admin@arch-wales.co.uk)

# Archaeology Wales

## Cwm Betws, Eglwyswrrw

### Archaeological Appraisal

Prepared For: Capture Energy

Edited by: M. HOLLISTON  
Signed: Mark Holliston  
Position: DIRECTOR  
Date: 29/01/2013

Authorised by: M. HOLLISTON  
Signed: Mark Holliston  
Position: DIRECTOR  
Date: 29/01/2013

By

Dr Iestyn Jones

Report No: 1096

Date: December 2012

Archaeology Wales Limited  
Rhos Helyg, Cwm Belan,  
Llanidloes, Powys SY18 6QF  
Telephone: 01686 440371  
E-mail: admin@arch-wales.co.uk

## Contents

Summary	1
1. Introduction	1
2. Site Description	1
3. Historic Background	1
4. Desk-based Assessment Results	2
4.1. HER Result	2
4.2 Map Regression	2
4.3 Site Visit	3
5. Assessment of Impact on the Archaeological Resource	4
6. Discussion and Conclusions	4
7. Bibliography	5

## List of Illustrations

Fig. 1.	Site location map
Fig. 2.	1889 OS map of site location
Fig. 3.	1908 OS map of site location
Fig. 4.	Modern OS Map of site location
Fig. 5.	1838 Llanfair Nant Gwyn parish tithe map
Fig. 6	1840 Bridell parish tithe map
Fig. 7.	Map showing location of HER sites
Fig. 8.	Site visit photographs
Fig. 9.	Additional site visit images

Copyright Notice: Archaeology Wales Ltd. retain copyright of this report under the Copyright Designs and Patents Act 1988, and have granted a licence to Capture Energy to use and reproduce the material contained within.

The Ordnance Survey has granted Archaeology Wales Ltd a Copyright Licence (No. AL 52163A0001) to reproduce map information; Copyright remains otherwise with the Ordnance Survey.

## Summary

*Archaeology Wales carried out an archaeological appraisal in November 2012 to examine the archaeological potential of a proposed wind turbine site on land south of Cwmbetws farm, Eglwysrw, Pembrokeshire. The site lies within one Historic Landscape Character Area and on the fringes of another and there is evidence for prehistoric settlement within the area. Search of cartographic sources suggest that the proposed turbine site lies adjacent to the site of a former 18<sup>th</sup> or early 19<sup>th</sup> century farmstead for which there is no visible surface evidence.*

## 1. Introduction

In November 2012 Archaeology Wales was commissioned by Capture Energy to carry out an archaeological appraisal on a proposed wind turbine site on land south of Cwmbetws farm, Eglwysrw, Pembrokeshire (NGR: SN 16593 39122, fig. 1). The proposed turbine will be 32.9m in height. The archaeological appraisal is being carried out pre-planning.

The site is located 2.45km west-south-west of Eglwysrw village and approximately 680m south of Cwmbetws farm. The site is located within two Historic Landscape Character Areas (see below) and consequently Dyfed Archaeological Trust, in their capacity as archaeological advisers to the local authority, requested an archaeological appraisal to determine whether there is the need for a further detailed assessment. This appraisal included an examination of the relevant documentary and cartographic sources, a study of the Pembrokeshire HER and a site visit. This report provides relevant information to DAT-HM and the local planning authority regarding the potential impact of the site on the heritage resource to allow a determination of whether further archaeological mitigation or monitoring work is required.

The work was carried out by Dr Iestyn Jones in November and December 2012.

## 2. Site Description

### Location, Topography, Geology

The proposed turbine site is at an elevation of 216m AOD in a field some 53m above and 680m south of Cwmbetws farm. The highest point of the field (221m AOD) has views of Cardigan Bay to the north and the Preseli mountains to the south-west. The top north-eastern end of the field is sheltered by a narrow linear deciduous tree plantation orientated east to west in an adjacent field. A footpath runs approximately north-to south along the eastern extent of the field. A wind turbine is located on land to the east of the proposed site.

The site's bedrock geology is Nantmel Mudstone whereas the village of Eglwysrw to the west is characterized by Sandstone (BGS 2012).

## 3. Historical Background

According to George Owen of Henllys the rural population around Eglwysrw area expanded exponentially during the post-medieval period which had implications for the settlement pattern of the parish (Sambrook 2006, 104). Cwmbetws farm (SN 1644039780), an eighteenth century farmhouse, was owned, in the late eighteenth-century by the Baptist minister Rev. William Williams, the founder of the Ebeneser chapel, located nearby (Hall and Sambrook 2009, 10). The name Betws, derived from

English 'bead-house' or 'oratory', may suggest the location nearby of an unrecorded medieval church in the area. No such church has been discovered to date. The field in which the site is located is crossed by the parish boundary between Llanfair Nant Gwyn to the west and Bridell to the east.

The site is located within two Historic Landscape Character Areas as defined by the Dyfed Archaeological Trust: Eglwyswrw (280) and Crossway-Glanpwillafon (413).

#### Eglwyswrw (280)

This landscape has been described by Dyfed Archaeological Trust's Landscape Characterisation as 'rich and diverse' with evidence of prehistoric as well as historic settlement (DAT 2012). Name place and documentary evidence suggests that the area was significant during the early medieval and medieval periods. In the early medieval period settlement foci within the Eglwyswrw area have been identified as parts of a possible Multiple Estate whilst during the thirteenth-century Eglwyswrw was part of the demense manor of the Lordship of Cenmaes. The post-medieval medium-sized irregular and regular fields have been interpreted as being evidence of various periods of enclosure possibly by individuals rather than estates (DATA 2012).

#### Crossway-Glanpwillafon (413)

Cwmbetws farm lies near the south-eastern border of the this Historic Landscape area whilst the possible turbine site lies immediately outside the defined border. Again, the early medieval and medieval character of the Eglwyswrw landscape figures prominently in the characterisation area. It is noted that the medieval caput was relocated from the village motte and bailey to a moated site at Court Farm 1km north-west of the village (DATb 2012). The remainder of this Historic Landscape area lies further north where the areas around the Teifi estuary remain distinctively different to the south.

## **4. Appraisal results**

### **4.1 HER Data**

A search of the regional Historic Environment Record was conducted for sites within an approximate radius of 2km of the site. A total of 39 sites were identified (fig. 7; Appendix I), including two Scheduled Ancient Monuments and four Listed Buildings:

Scheduled Ancient Monuments:

- Castell Iron Age Hillfort (PRN 1173)
- Cilgerran Enclosure (PRN 1182)

Listed Buildings:

- St Mary's Church Crymych (PRN 17378)
- Maesyfelin House (PRN 59301)
- Post-medieval boundary marker (PRN 29514)
- Pant y Deri building (PRN 60506)

The majority of the sites on the HER are post-medieval in date and include holy wells, churches, houses and boundary markers. There are two Bronze Age sites listed (PRN 4981 and 12121), both the possible locations of standing stones based on placename evidence, and five Iron Age enclosures (PRN 1173, 1172, 1182, 5203 and

998). A single Roman site is recorded, comprising the findspot of a daggar (PRN 1181).

Cwmbetws farm, located immediately below the proposed development site, is listed in the HER twice, once as evidence related to Betws as a possible church site (PRN 5726) and also as a historic post-medieval farmstead (PRN 48044).

No features of archaeological significance are listed for the proposed turbine location.

## 4.2 Map Regression

### Llanfair Nant Gwyn Parish Tithe Map 1838

The western side of the field lies within the parish of Llanfair Nant Gwyn (fig.5). The 1838 tithe map shows a numbered field (33) described as a 'Small Piece' and a structure to its immediate south (34) described as 'House, Garden and Baye (?)'. An associated small field to the south labeled as number 35 is described as 'Two smalls closed'. The house and garden and the aforementioned plots of land are named as Siberia and the tithe apportionment names the occupant of Siberia in 1838 as Morris Griffiths.

### Bridell Parish Tithe Map 1840

This tithe map covers the far eastern end of the field which is depicted as divided into three separate fields labeled as 490, 491 and 492 (fig. 6). These fields are described in the apportionment as belonging to Pentre (?) and were occupied by Morris Griffiths.

### OS 1<sup>st</sup> Edition County Series Map 1889

The 1889 OS map (fig. 2) clearly shows the house, curtilage and garden referred to in the Llanfair Nant Gwyn tithe map as 'Siberia'. The garden plots immediately east and west of the house structure appear to extend east-west for approximately 70m and are likely to be approximately 30m wide (north-south). The east-west field boundaries to the east of Siberia marked on the Bridell tithe map as 490-492 are not marked and it is likely that these three fields were turned into one larger field in the mid-nineteenth century.

### OS 1:10,500 Map 1908

In the 1908 OS map (fig. 3) the house and garden of Siberia are absent although otherwise the field system seems little changed. A possible trackway, marked as a dotted line, extends from the direction of Cwmbetws farm in the north and passes the former location of Siberia.

### OS Map, Modern

The modern OS map (fig. 4) shows that the former field boundary marked as 35 in the Llanfair Nant Gwyn tithe map no longer exists and is part of a larger field to the south-west. It is interesting to note that the footpath from the direction of Cwm Betws now crosses the field in the south-east and avoids the former location of Siberia.

## 4.3 Site Visit

A site visit was conducted on the 29<sup>th</sup> November 2012 in dry but overcast conditions. The proposed turbine site is located in a north-facing L-shaped field that is currently used as sheep pasture and slopes gently south to north. There are views to the north on a clear day towards Cardigan Bay (fig. 8b). At the summit of the hill on the southern

edge of the field there are clear views of the Preseli mountains (fig. 8d). The field boundaries are traditional Pembrokeshire examples of stone and earth banks topped with modern post fencing and/or hedges (fig. 8d). There were no visible remains of the Siberia farm building or of any of its boundaries. A wind turbine is clearly visible on farm land to the north-east of the site (fig. 8c). An electrical supply post and power lines also cross the field north to south. Trees border the southern summit of the field and a small block-built outbuilding was seen within these trees (fig.9b). A footpath is marked running along the eastern field boundary to a stile in the south-eastern corner (fig. 9c).

No archaeological remains were observed within the field.

## 5. Assessment of Impact on the Archaeological Resource

The proposed development site lies near the summit of a north-facing hill. The site is not visible from land to the south, south-east and south-west and consequently only those sites listed on the HER to the north of the proposed development were assessed for visual impact.

The relatively low height of the turbine, 32.9m to tip, and its proposed location in the landscape, well below the summit of the hill means that it has a relatively minor impact on the setting of sites over one km away. The hill on which the proposed turbine will be located is visible from both Castell hillfort and the adjacent Cilgerran enclosure, both Scheduled Ancient Monuments, and from Gaer Cwmffrwd hillfort but the turbine will not be a prominent feature in the landscape. The potential impact on the setting of these sites is considered to be minor.

The only listed building that the site is visible from is the boundary stone on the A487. The impact on the setting of this site is, however, considered to be minor.

The turbine will be visible from many of the post-medieval sites that lie in the valley immediately to the north of the proposed development site. The visual impact of the development on the setting of these is considered to be moderate.

The proposed development has the potential to directly impact archaeological remains associated with 'Siberia', the small collection of buildings recorded on the tithe map. The impact could be significant, resulting in the destruction of any buried remains, and consequently a programme of archaeological monitoring during construction is recommended.

## 6. Discussion and Conclusions

The site lies within an historic landscape of some significance with many prehistoric as well as historic sites listed within a short distance of the site. A study of cartographic evidence suggests that a small farmstead and garden called Siberia was built on or very near to the proposed turbine site. The house is shown on the 1838 tithe map as well as the 1889 OS map but is missing on the 1908 map. A catalogue of sale within the National Library of Wales suggests that 'Cwmbettws Siberia' was sold on the 22<sup>nd</sup> of September 1900 (Woodward & Evans George 1900). Sometime between 1900 and 1908 the farm building was removed. Sambrook (2006, 106) states that 'poorly built structures were much more likely to be swept away following desertion and often no surface evidence will survive'. It is suggested that Siberia is

one of the many examples of cottages visible on 19<sup>th</sup> century maps that have left no visible evidence although it is possible that there would be sub-surface archaeological evidence for this house. Any proposed development at this particular site should take this into consideration and an Archaeological Watching Brief conditioned in any planning consent.

The visual impact of the turbine would affect only those sites on the northern side of the hill, and it is visible for some distance on uplands to the north. The impact on sites located more than 1km from the turbine location is considered to be minor, whilst for those within 1km it is considered to be moderate.

## 7. Bibliography and Sources

BGS 2012. British Geological Survey.  
<http://www.bgs.ac.uk/data/mapViewers/home.html>. (Accessed December 2012).

DATa 2012. Dyfed Archaeological Trust Landscape Characterisation. Eglwysrwrw Historic Landscape – Preseli (280)  
<http://www.cambria.org.uk/HLC/Preseli/area/area280.htm> (Accessed December 2012).

DAR 2012b. Dyfed Archaeological Trust Landscape Characterisation. Crossway-Glanpwllafon Historic Landscape – Lower Teifi Valley (413).  
<http://www.cambria.org.uk/HLC/lowerteifivalley/crossway.htm>. (Accessed December 2012)

Hall, J. and Sambrook, P. 2009 Crymych Hub Heritage and Natural Environment Audit. Part E. Eglwysrwrw Community Audit, (Unpublished Report) Trysor Project No. 2009/151, for Planed, September 2009.

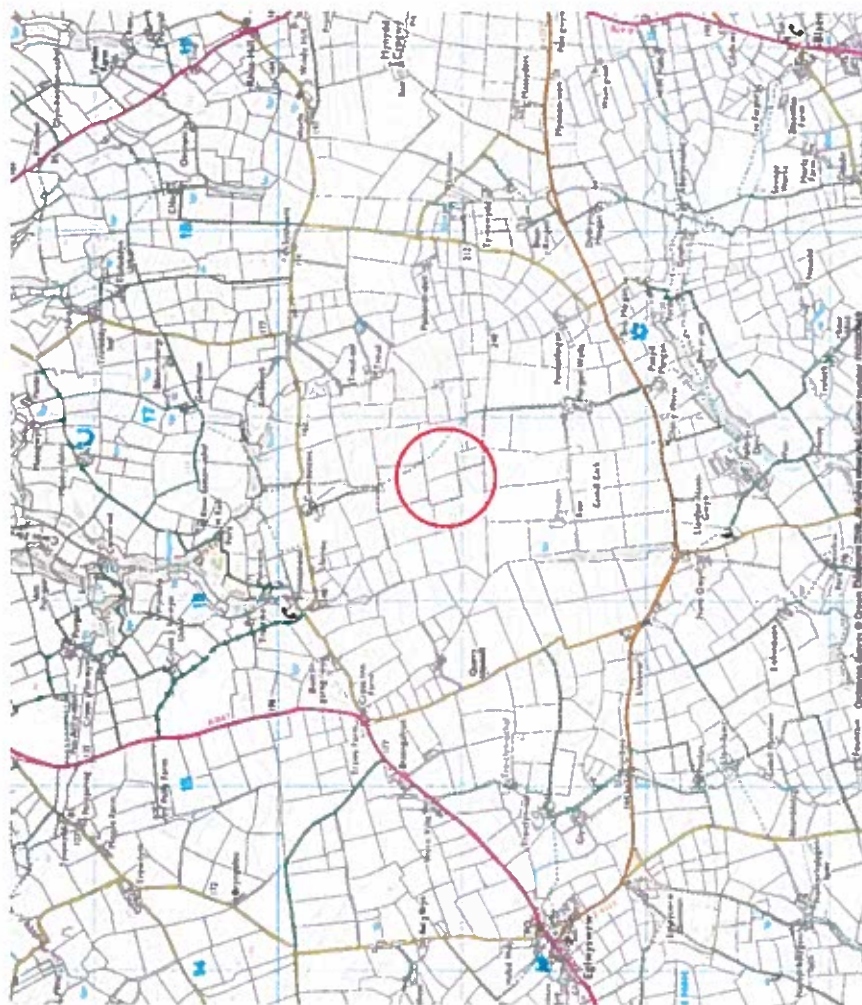
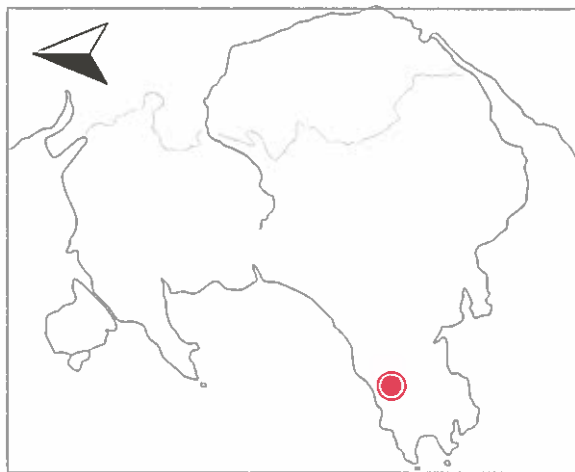
Sambrook, P. 2006. 'Deserted rural settlements in South-west Wales', in Roberts, K. (Ed.), 2006. *Lost Farmsteads – deserted rural settlements in Wales*, CBA Research Report 148. York: CBA, pp. 83-109.

Woodward, W. and Evans George, W. 1900. *Pembrokeshire particulars and conditions of sale of a valuable freehold estate comprising the farms known as Cwmbettws Siberia and Lleine situated in the several parishes of Bridell and Llanfair Nantgwyn*. London: William Woodward (NLW Estate Sales Catalogue).

The following cartographic sources were consulted during the preparation of this assessment:

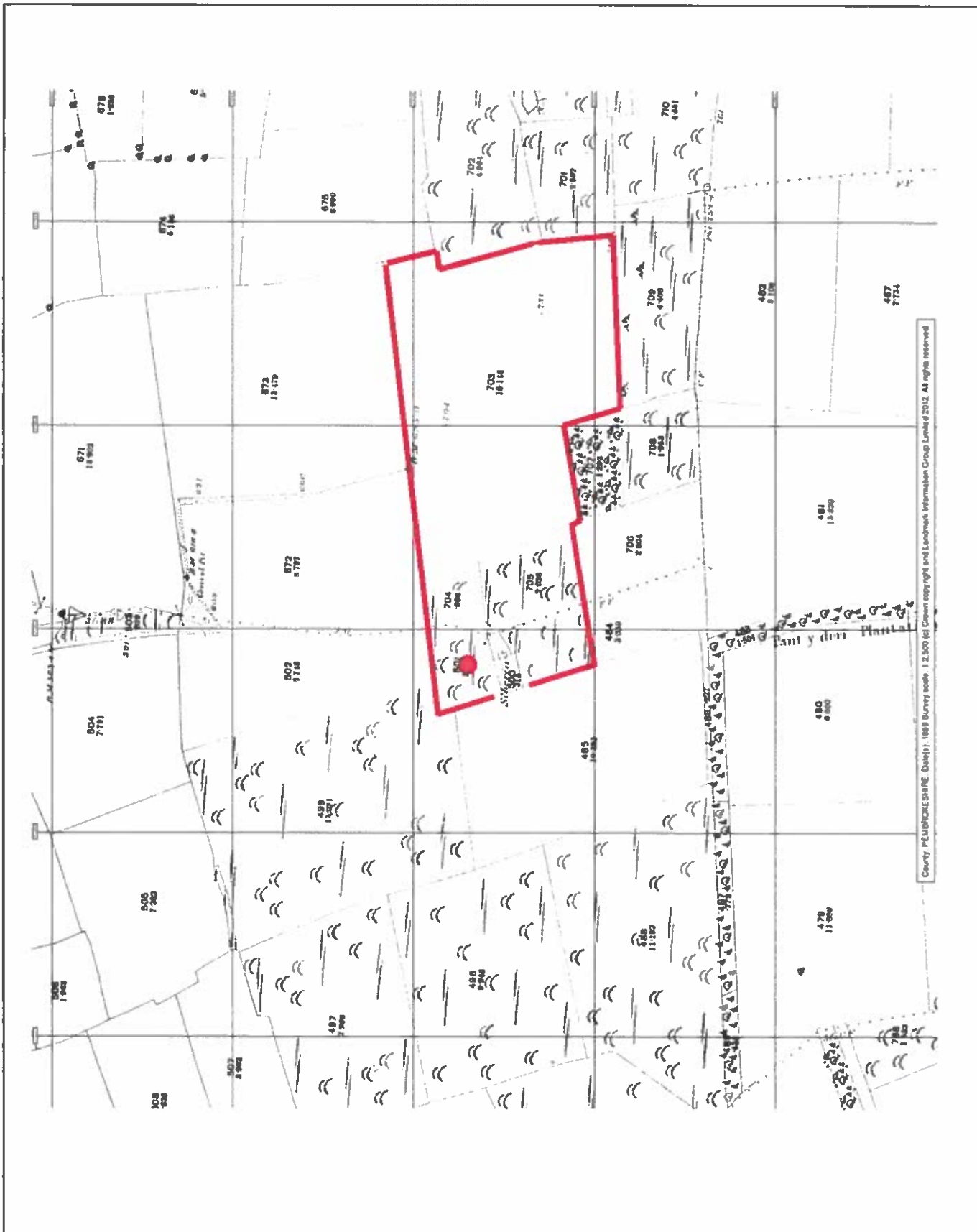
1838 Tithe map – Llanfair Nant Gwyn Parish  
1840 Tithe map- Bridell Parish  
1889 OS 1:2,500 Map  
1908 OS 1:10, 560 Map  
OS map (modern)





**Fig. 1**  
**Location of**  
**proposed**  
**development**  
**site**

Fig.2  
1889 OS map of  
site location



County PEMBROKE-SHIRE. Date (s) 1889. Survey scale 1:2,500 (d) Crown copyright and Landmark Information Group Limited 2012. All rights reserved.

Fig. 3  
1908 OS map  
of site location

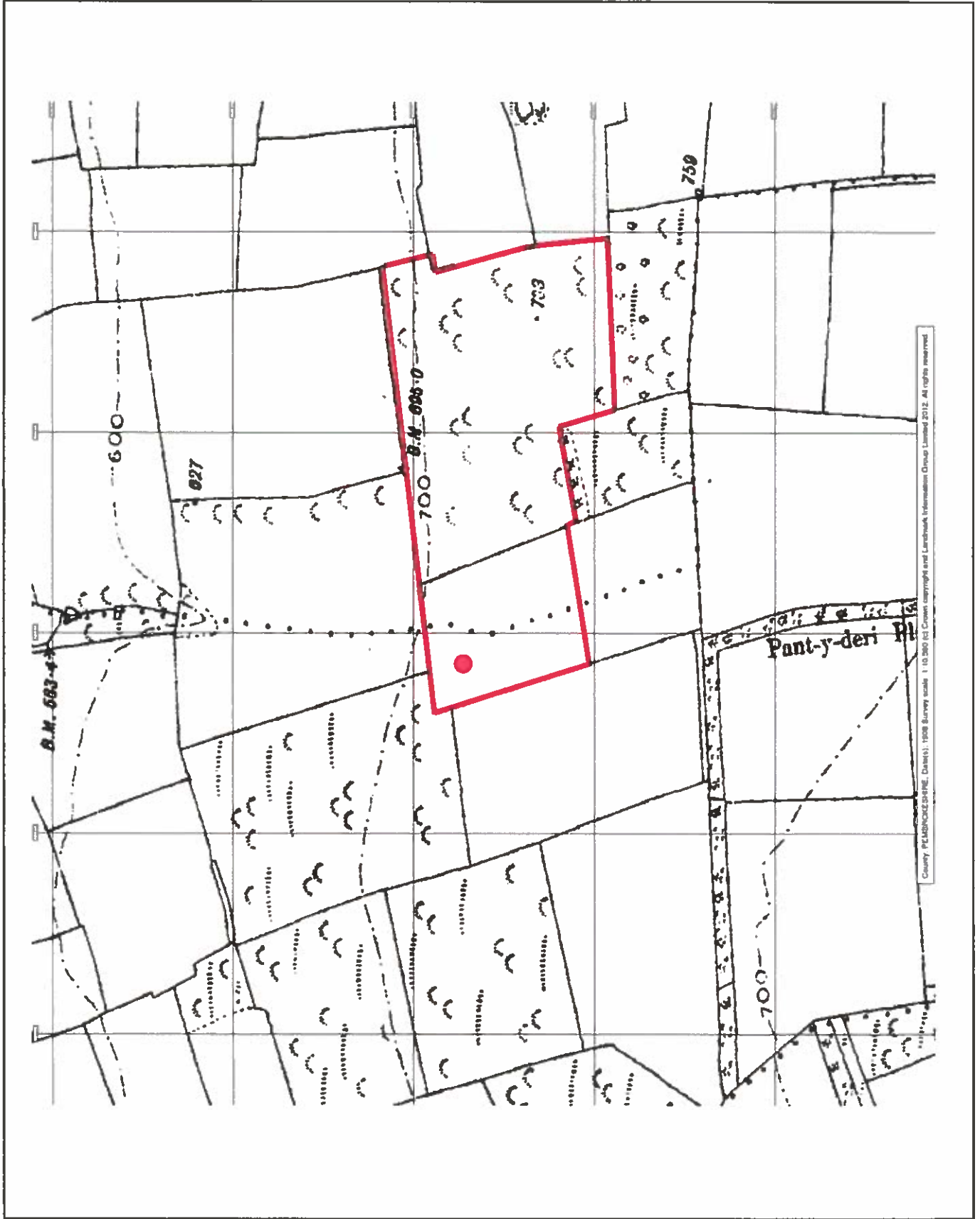
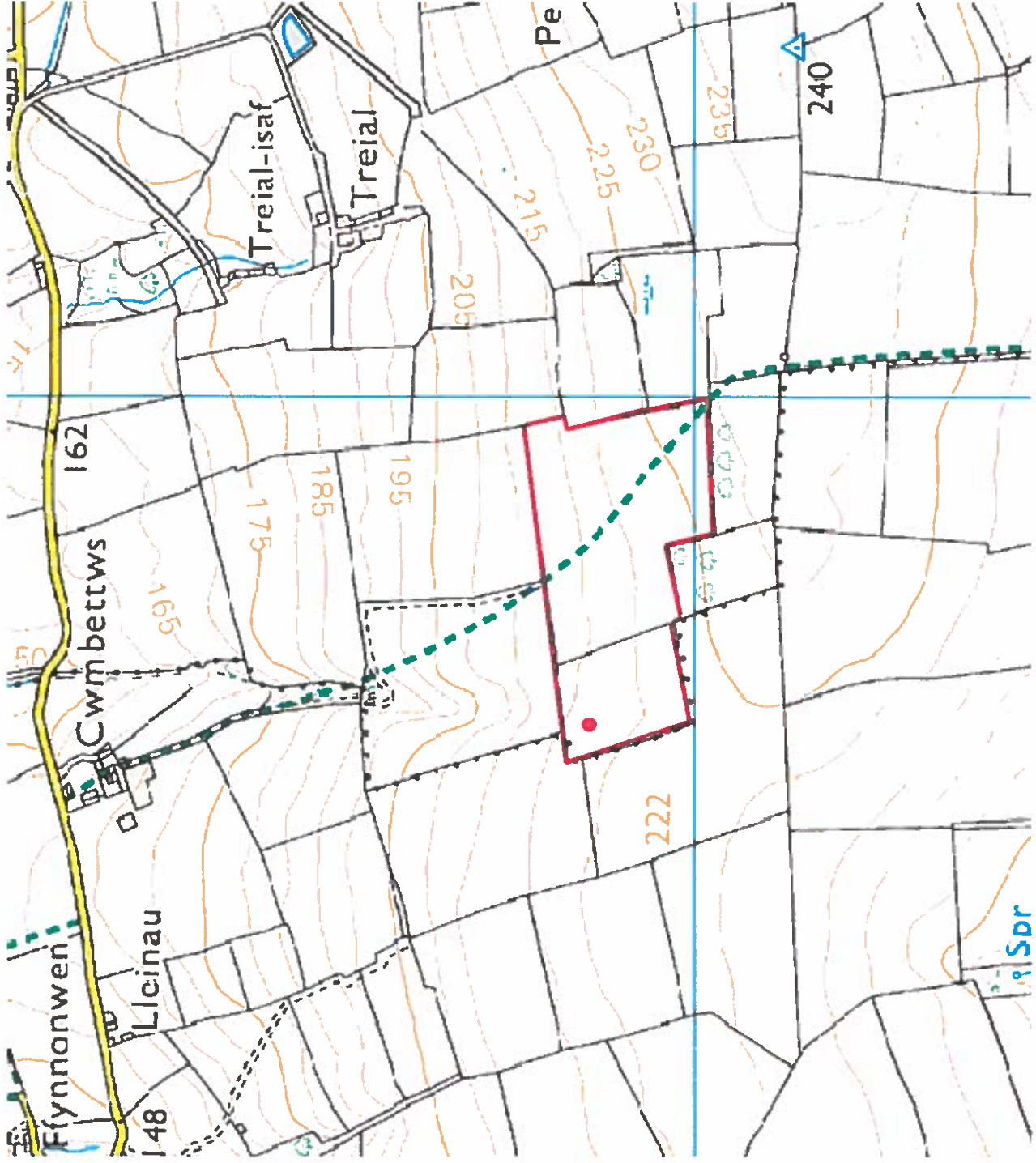


Fig.4  
Modern OS  
map of site  
location







**Fig. 5**  
**1838 Llanfair**  
**Nant Gwyn**  
**parish tithe**  
**map**

**Fig. 6**  
**1840 Bridell**  
**parish tithe**  
**map**



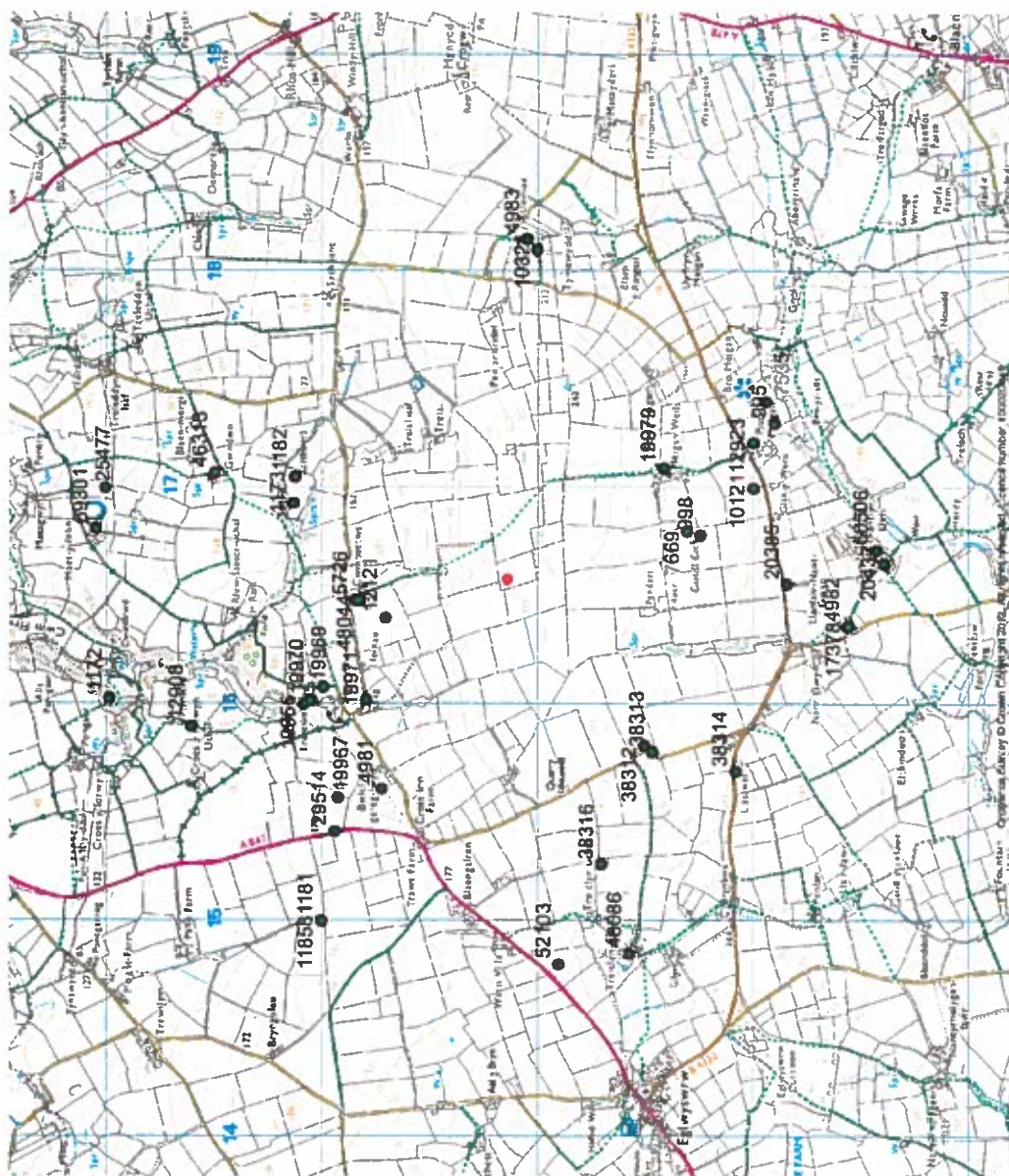


Fig.7

Map showing  
location of HER  
sites.  
Proposed turbine  
location shown as  
red circle.





8a. View looking across the proposed turbine site. Looking south-east from the north-west corner of field.



8b. View looking north-west towards Cardigan Bay



8c. View of neighbouring wind turbine and electric supply posts in the field - looking north-east.



8d. South-west field boundary and view of Preseli mountains beyond

Fig.8  
Images from  
site visit





9a. View of L-shaped copse of trees to the south-east. Looking south-west.



9b. Small block-built outbuilding in trees. Looking south.



9c. View of footpath indicator along eastern boundary. Looking south-east.



9d. View of upper southern boundary of the field from the lower part of the site. Looking south.

Fig. 9

Images from site visit

# *Archaeology Wales*

## APPENDIX I - HER DATA

## **HISTORIC ENVIRONMENT RECORD INFORMATION**

Prepared by Felicity Sage, Dyfed Archaeological Trust

Produced for Amelia Pannett from the Regional Historic Environment  
Record:

Dyfed Archaeological Trust, The Shire Hall, 8 Carmarthen Street,  
Llandeilo, Carmarthenshire, SA19 6AF

Tel (01558) 823131 , Fax (01558) 823133 Email

[info@dyfedarchaeology.org.uk](mailto:info@dyfedarchaeology.org.uk)

**Use of this information is subject to the terms and conditions of  
access to Welsh HER data published on DAT's website**

[www.dyfedarchaeology.org.uk](http://www.dyfedarchaeology.org.uk)

## **HISTORIC ENVIRONMENT FEATURES**

### **Search criteria:**

All the HER listings for a 2km radius of SN 16593 39122

A search of the regional Historic Environment Record (HER) held by the Dyfed Archaeological Trust has identified the following historic environment features. These are listed and described below. Each feature is allocated a Primary Record Number (PRN) that should be quoted in any correspondence. Where the identification of a site is not certain then all possible interpretations are given in the type field e.g.'enclosure, henge'. Possible date ranges are also shown in this way in the period field. If a field contains no information then it is either not recorded, not known or not applicable for that site.

Please contact the HER if you have any further questions regarding this information, if you would like any of the sources followed up or if you have information that could improve these records in any way.

Source prefixes:

Ph = Published, historic (pre-1900)

Mh = Unpublished, historic

Pm/Mm = Published/Unpublished modern (post-1899)

Desc Text = Descriptive text.

GP/AP = Ground photograph/Aerial photograph.

All other source types should be self-explanatory; please contact the HER if you require assistance with them.

**PRN 10121 NAME** ST MEIGAN DEDICATION;ST MEUGAN DEDICATION  
**TYPE** DELETED **PERIOD** Unknown  
**NGR** SN1738 **COMMUNITY** Cilgerran  
**CONDITION** **STATUS** *None recorded* **FORM** Documents

#### **SUMMARY**

Deleted as part of Cadw Early Medieval Ecclesiastical Sites Project.  
Merged with PRN 995.

#### **DESCRIPTION**

**SOURCES** Pm List Bowen,EG 1954 Settlements of the Celtic Saints in Wales p.91  
Pm Map OS 1964 SN13 NE - 7 Meugan place-names  
**OTHER SOURCES**

---

**PRN 10324 NAME** ST LLAWDDOG DEDICATION  
**TYPE** DELETED **PERIOD** Unknown  
**NGR** SN181390 **COMMUNITY** Cilgerran  
**CONDITION** **STATUS** *None recorded* **FORM** Documents

**SUMMARY**

Deleted as part of the Cadw Early Medieval Ecclesiastical Sites Project.  
NDL 2002

**DESCRIPTION**

**SOURCES** Pm List Baring-Gould & Fisher 1911 Lives of the British Saints  
Vol.3,p.373

Pm Map OS 1964 SN13 NE

**OTHER SOURCES**

---

**PRN 1172 NAME** GAER Y;GAER CWMFFRWD  
**TYPE** HILLFORT **PERIOD** Iron Age  
**NGR** SN16034098 **COMMUNITY** Cilgerran  
**CONDITION** Damaged **STATUS** *None recorded* **FORM** Earthwork

**SUMMARY**

**DESCRIPTION**

**SOURCES** Mm List DAT 1983 SRF SRF 1173,re confusion of site names  
Pm List Laws & Owen 1908 Pembrokeshire Archaeological Survey 8-5  
Mm Desc Text Murphy,K 2004 Assessment of Prehistoric Defended  
Enclosures 2004-5, Report No 2004-100 ACA Reports  
Pm List Nash-Williams,VE 1933 Archaeologia Cambrensis  
Vol.88,p.329,No.L20  
Mm List OS 1974 SN14 SE3  
Mm List PCM 1980 Card Index Pr E112  
Mm AP Vertical RAF 1946 106G-UK-1424 3165-6  
Pm List RCAHM 1925 Pembrokeshire No.543,p.180  
Mm Desc Text Williams,GH 1970 Hillforts in NE Pembs

Mm Desc Text Williams,GH 1977 DRF

#### **OTHER SOURCES**

Report Hall, J and Sambrook, P 2009 CRYMYCH HUB HERITAGE AND NATURAL ENVIRONMENT AUDIT: PART E EGLWYSWRW COMMUNITY REPORT

---

**PRN 1173 NAME CASTELL**

**TYPE** HILLFORT **PERIOD** Iron Age

**NGR** SN16934013 **COMMUNITY** Cilgerran

**CONDITION** Damaged **STATUS** *scheduled ancient monument PE565*  
**FORM** Earthwork

#### **SUMMARY**

#### **DESCRIPTION**

Real mix up in RCAM pemb due to calling this site Castell Cwmffrwd. Crossley continues the confusion by listing 1175 twice (though once giving a possible NGR corresponding to 1172). He uses Castell Cwmffrwd as a place name for 1173. Nash Williams (AC 933) also joins in - uses RCAM names.CMS 1983

**SOURCES** Pm List Crossley,DW 1963 Bulletin of the Board of Celtic Studies Vol.20,p.182,No.22

Mm List DAT 1983 SRF Re confusion of site names

Pm List Laws & Owen 1908 Pembrokeshire Archaeological Survey 8-6

Mm Desc Text Murphy,K 2004 Assessment of Prehistoric Defended Enclosures 2004-5, Report No 2004-100 ACA Reports

Pm List Nash-Williams,VE 1933 Archaeologia Cambrensis Vol.88,p.329,No.L21

Mm List OS 1974 SN14 SE4

Mm AP Vertical RAF 1946 106G-UK-1424 4154-5

Pm Place-name RCAHM 1925 Pembrokeshire No.77,p.30,Erroneously called "Castell Cwmffrwd"

#### **OTHER SOURCES**

Documents CADW 2010 Notification of scheduling

Report Hall, J and Sambrook, P 2009 CRYMYCH HUB HERITAGE AND NATURAL ENVIRONMENT AUDIT: PART B CILGERRAN COMMUNITY REPORT

---

**PRN 1181 NAME** CILGERRAN DAGGER  
**TYPE** FINDSPOT **PERIOD** Roman, Post-medieval  
**NGR** SN1540 **COMMUNITY** Cilgerran  
**CONDITION** **STATUS** *None recorded* **FORM** Finds

**SUMMARY**

**DESCRIPTION**

**SOURCES** Mh Desc Text Antiquarian and Topographical Cabinet 1811  
Article of The Cilgerran Dagger by Fenton,J Vol.9 DRF  
Ph Desc Text Laws,E 1888 Little England Beyond Wales  
Mm List PCM 1980 Card Index Pr F222  
Mm List PCM 1980 Card Index F1

**OTHER SOURCES**

Report 1181.pdf

---

**PRN 1182 NAME** PANT LLYN  
**TYPE** ENCLOSURE **PERIOD** Unknown  
**NGR** SN17054012 **COMMUNITY** Cilgerran  
**CONDITION** Damaged **STATUS** *scheduled ancient monument PE564*  
**FORM** Earthwork

**SUMMARY**

Enclosure of unknown purpose. RPS August 2001

**DESCRIPTION**

**SOURCES** Mm List OS 1974 SN14 SE12

**OTHER SOURCES**

Documents CADW 2010 Notification of scheduling

---

**PRN 11858 NAME** MORTIMER IS SYRWEN;MORTIMER IS COED  
**TYPE** MANOR HOUSE **PERIOD** Medieval, Post-medieval

**NGR** SN1540 **COMMUNITY** Aberporth  
**CONDITION** **STATUS** *None recorded* **FORM** Documents

**SUMMARY**

NGR is indicative Manor House location within general area RJ 2002

**DESCRIPTION**

Two manors owned by Thomas Lloyd Esq. of Coedmore. Possibility that names have since changed. Both in hamlet of Llanannerch

**SOURCES** Ph List Lewis,S 1833 Topog.Dict.Wales Aberporth  
Mh Map Saxton,C 1578 Cardigan CR 11652

**OTHER SOURCES**

---

**PRN** 12121 **NAME** PARC Y MAEN LLWYD  
**TYPE** STANDING STONE **PERIOD** Bronze Age  
**NGR** SN164397 **COMMUNITY** Eglwysrwrw  
**CONDITION** **STATUS** *None recorded* **FORM** Place-name

**SUMMARY**

A "Maen" place-name on the parish tithe map that may have indicated a standing stone existed here. RPS Trysor, August 2004

**DESCRIPTION**

**SOURCES** Mh Map Tithe Map & Apport,Llanfair Nant Gwyn Ph Schedule No.42

Mm List DAT 1982 CR 4981

Mm List DAT Cook,N 2004 Prehistoric Funerary and Ritual Sites Project - Pembrokeshire 2003-2004

Mm AP Vertical Meridian Airmaps 1955 210-230 12212-3

Pm List RCAHM 1925 Pemb No.466,p.164

**OTHER SOURCES**

---

**PRN** 12908 **NAME** MONACHE  
**TYPE** MONASTIC LAND **PERIOD** Medieval



**NGR** SN159406 **COMMUNITY** Cilgerran  
**CONDITION** **STATUS** *None recorded* **FORM** Documents

#### **SUMMARY**

#### **DESCRIPTION**

**SOURCES** Pm List Laws & Owen 1908 Pemb.Arch.Survey 8-4

#### **OTHER SOURCES**

Documents DAT 2010 12908.pdf

---

**PRN** 12923 **NAME** PISTYLL MEIGAN

**TYPE** HOLY WELL **PERIOD** Medieval

**NGR** SN17213800 **COMMUNITY** Cilgerran

**CONDITION** **STATUS** *None recorded* **FORM** Documents

#### **SUMMARY**

#### **DESCRIPTION**

**SOURCES** Mm List DAT 1983 CR 995,7535,10121

Pm List Laws & Owen 1908 Pemb.Arch.Survey 12-5

#### **OTHER SOURCES**

Documents DAT 2010 12923.pdf

---

**PRN** 17378 **NAME** ST MARY'S

**TYPE** CHURCH **PERIOD** Post-medieval

**NGR** SN1636537555 **COMMUNITY** Crymych

**CONDITION** Not Known **STATUS** *listed building 82938*

**II FORM** Building

#### **SUMMARY**

A 19th century church, built on the site of, and in the same location as, the medieval church (PRN 4982)

## DESCRIPTION

**SOURCES** Mm List 1980 Card Index E81

Mm List DAT 1983 CR 4982

Mm Database DAT 2000 Churches FPW26 Database

Mm Desc Text Ludlow,N 1998 St Mary Preseli Pembrokeshire Historic Churches Part 3

Pm Map OS 1964 SN13NE

Pm List RCAHM 1925 Pemb p.163,No.462

### OTHER SOURCES

Report Hall, J and Sambrook, P 2009 CRYMYCH HUB HERITAGE AND NATURAL ENVIRONMENT AUDIT: PART D CRYMYCH REPORT

---

**PRN 19956 NAME**

**TYPE** BAPTISTERY **PERIOD** Post-medieval

**NGR** SN16004008 **COMMUNITY** Cilgerran

**CONDITION** Not Known **STATUS** *None recorded* **FORM** Other structure

### SUMMARY

## DESCRIPTION

**SOURCES** Pm Map OS 1963 SN14SE

### OTHER SOURCES

Report Hall, J and Sambrook, P 2009 CRYMYCH HUB HERITAGE AND NATURAL ENVIRONMENT AUDIT: PART E EGLWYSWRW COMMUNITY REPORT

---

**PRN 19967 NAME** FFYNNON-LAS

**TYPE** WELL **PERIOD** Post-medieval

**NGR** SN1556939922 **COMMUNITY** Eglwyswrw

**CONDITION** **STATUS** *None recorded* **FORM** Place-name

### SUMMARY

## DESCRIPTION

**SOURCES** Pm Map OS 1964 SN13NE

**OTHER SOURCES**

---

**PRN 19969 NAME**

**TYPE** CHAPEL **PERIOD** Post-medieval

**NGR** SN16083999 **COMMUNITY** Eglwyswrw

**CONDITION** Not Known **STATUS** *None recorded* **FORM** Building

## SUMMARY

## DESCRIPTION

**SOURCES** Pm Map OS 1964 SN13NE

**OTHER SOURCES**

Report Hall, J and Sambrook, P 2009 CRYMYCH HUB HERITAGE AND  
NATURAL ENVIRONMENT AUDIT: PART E EGLWYSWRW COMMUNITY  
REPORT

---

**PRN 19970 NAME** FFYNNON-WEN

**TYPE** WELL **PERIOD** Post-medieval

**NGR** SN1601940043 **COMMUNITY** Eglwyswrw

**CONDITION** **STATUS** *None recorded* **FORM** Place-name

## SUMMARY

## DESCRIPTION

**SOURCES** Pm Map OS 1964 SN13NE

**OTHER SOURCES**

## SUMMARY

## DESCRIPTION

**SOURCES** Pm Map OS 1964 SN13NE

## OTHER SOURCES

---

**PRN 20437 NAME** PANTYDERI

**TYPE** MANSION **PERIOD** Post-medieval

**NGR** SN16653739 **COMMUNITY** Crymych

**CONDITION** Not Known **STATUS** *None recorded* **FORM** Building

## SUMMARY

## DESCRIPTION

**SOURCES** Pm List 1911-12 WWHR Vol.II,p.84-5

Pm List Laws & Owen,E & H 1907 Pemb Arch.Survey 12 No.7

Ph List Nicholas,T 1872 County Families of Wales Vol.1,p.898

Pm Map OS 1964 SN13NE

## OTHER SOURCES

Documents DAT 2010 20437.pdf

Report Hall, J and Sambrook, P 2009 CRYMYCH HUB HERITAGE AND  
NATURAL ENVIRONMENT AUDIT: PART D CRYMYCH REPORT

---

**PRN 25477 NAME** TY GWYN

**TYPE** MINING FEATURE **PERIOD** Post-medieval

**NGR** SN1741 **COMMUNITY** Cilgerran

**CONDITION** Not Known **STATUS** *None recorded* **FORM** Earthwork

## SUMMARY

## DESCRIPTION

**SOURCES** Mm Desc Text Claughton,PF 1990 SRF  
Mm Desc Text Claughton,PF 1990 Metal mining sites in Pembrokeshire  
DRF

### OTHER SOURCES

Documents DAT 2010 25477.pdf  
Report Hall, J and Sambrook, P 2009 CRYMYCH HUB HERITAGE AND  
NATURAL ENVIRONMENT AUDIT: PART B CILGERRAN COMMUNITY  
REPORT

---

**PRN 29514 NAME**

**TYPE** BOUNDARY STONE **PERIOD** Post-medieval

**NGR** SN1541239937 **COMMUNITY** Eglwysrw

**CONDITION** Intact **STATUS** *listed building 14768 II* **FORM** Other  
structure

### SUMMARY

Early 19th century parish boundary stone with incised lettering. WO  
1994.

## DESCRIPTION

**SOURCES** Mm Desc Text CADW 1994 BSAHI - Eglwysrw p.12  
Mm Desc Text WO 1994 Listing Schedule DRF

### OTHER SOURCES

---

**PRN 38312 NAME** WOODLANDS

**TYPE** COTTAGE **PERIOD** Post-medieval

**NGR** SN15813850 **COMMUNITY** Eglwysrw

**CONDITION** Near Destroyed **STATUS** *None recorded*  
**FORM** Building

### SUMMARY

Cottage shown on Bronwydd estate map of Eglwysrw Parish in 1822.  
Now deserted. Rectilinear earthwork wall bases still visible in field corner.

RPS August 2001

## **DESCRIPTION**

**SOURCES** Mm Desc Text Sambrook,P 2000 Deserted Rural Settlements in South-West Wales 1999-2000 survey SMR Library

## **OTHER SOURCES**

---

**PRN 38313 NAME** PEN BIGNI

**TYPE** COTTAGE **PERIOD** Post-medieval

**NGR** SN1578038465 **COMMUNITY** Eglwyswrw

**CONDITION** Destroyed **STATUS** *None recorded* **FORM** Building

## **SUMMARY**

Cottage shown on Bronwydd estate map of Eglwyswrw Parish in 1822. Now deserted. Ruins cleared in mid-20th century but pottery and china still come up when site is ploughed. RPS August 2001

## **DESCRIPTION**

**SOURCES** Mm Desc Text Sambrook,P 2000 Deserted Rural Settlements in South-West Wales 1999-2000 survey SMR Library

## **OTHER SOURCES**

---

**PRN 38314 NAME** LLAIN

**TYPE** COTTAGE **PERIOD** Post-medieval

**NGR** SN15693808 **COMMUNITY** Eglwyswrw

**CONDITION** Destroyed **STATUS** *None recorded* **FORM** Building

## **SUMMARY**

Cottage shown on Bronwydd estate map of Eglwyswrw Parish in 1822. Stood almost intact until late 1990s, when site was cleared and excavated to create a parking area for neighbouring cottage. Fragment of walling survived in 2001. RPS August 2001

**SOURCES** Mh Map 1839 Tithe Map & Apportionment, Bridell Ph Gwndwn, schedule no 234

**OTHER SOURCES**

---

**PRN 48044 NAME** CWMBETTWS

**TYPE** FARMSTEAD **PERIOD** Post-medieval

**NGR** SN16483982 **COMMUNITY** Eglwyswrw

**CONDITION** Intact **STATUS** *None recorded* **FORM** Building

**SUMMARY**

Now a working farm on the border between Llanfair-Nant-Gwyn and Bridell parishes. In 1786 William Williams was owner with John Phillips as tenant. The house and farmbuildings, c.18th - 19th century, are traditionally constructed of stone under slate though with some modernisation. JB 2003.

**DESCRIPTION**

**SOURCES** Mh Map 1837 Tithe Map and Apportionment for Llanfair-Nant-Gwyn parish Schedule No 26

Pm Desc Text Jones, F 1996 Historic Houses of Pembrokeshire and their Families p49

**OTHER SOURCES**

Report Hall, J and Sambrook, P 2009 CRYMYCH HUB HERITAGE AND NATURAL ENVIRONMENT AUDIT: PART E EGLWYSWRW COMMUNITY REPORT

---

**PRN 48086 NAME** TRECLYN ISAF

**TYPE** FARMHOUSE **PERIOD** Post-medieval

**NGR** SN14853857 **COMMUNITY** Eglwyswrw

**CONDITION** Intact **STATUS** *None recorded* **FORM** Building

**SUMMARY**

Now a farmhouse, Thomas Griffith was resident here in 1678. The tithe indicates that David Rees was the owner-occupier in 1838 farming 102 acres and he let the neighbouring holding of Glyn Newydd to Margaret Rees. JB 2003 based on Francis Jones 1996.

## DESCRIPTION

**SOURCES** Mh Map 1838 Tithe map and Apportionment for Eglwysrw parish Schedule no.535

Pm Desc Text Jones,F 1996 Historic Houses of Pembrokeshire and their Families p202

### OTHER SOURCES

Report Hall, J and Sambrook, P 2009 CRYMYCH HUB HERITAGE AND NATURAL ENVIRONMENT AUDIT: PART E EGLWYSRW COMMUNITY REPORT

---

**PRN 4981 NAME** BWLCH GARREG-LLWYD

**TYPE** STANDING STONE **PERIOD** Bronze Age

**NGR** SN15613972 **COMMUNITY** Eglwysrw

**CONDITION** **STATUS** *None recorded* **FORM** Place-name

### SUMMARY

A "Garreg" place-name on the parish tithe map that may have indicated a standing stone existed here. RPS Trysor, August 2004

## DESCRIPTION

**SOURCES** Mm List DAT 1982 CR 12121

Mm List DAT Cook,N 2004 Prehistoric Funerary and Ritual Sites Project - Pembrokeshire 2003-2004

Mm AP Vertical Meridian Airmaps 1955 210-230 12211-2

Pm List RCAHM 1925 Pemb No.466,p.164

Mm List RCAHM 1976 2c,PE

### OTHER SOURCES

---

**PRN 4982 NAME** LLANFAIR-NANT-GWYN PARISH CHURCH;ST MARY'S

**TYPE** CHURCH **PERIOD** Medieval

**NGR** SN16363756 **COMMUNITY** Crymych

**CONDITION** **STATUS** *None recorded* **FORM** Documents



## SUMMARY

Medieval parish church, entirely rebuilt in the 19th century (as post-med PRN 17378). Formerly a chapelry, variously attached to Eglwyswrw and Eglwyswen parishes, it was a donative free chapel, established by the patron (Owen 1897, 312,505). It has a small, suboval churchyard. Dedicated to St Mary. The original dedication was possibly to the 'Celtic' St David (Lewis 1833). There is no current evidence for an early medieval date. NDL 2003

## DESCRIPTION

**SOURCES** Pm Desc Text 1911-12 Pembrokeshire Parsons West Wales Historical Records, Vol. II, p. 240-1  
Mm List DAT 1983 CR 17378  
Mm Database DAT 2000 Churches FPW26 Database  
Pm List Laws & Owen 1908 Pembrokeshire Arch. Survey 12-4  
Ph List Lewis, S 1833 Topographical Dictionary of Wales Llanvair Nantgwyn  
Mm Desc Text Ludlow, N 1998 St Mary North Pembrokeshire Historic Churches  
Mm Mention Ludlow, N 2002 Cadw Early Medieval Ecclesiastical Sites Project, Part 1  
Mm AP Vertical Meridian Airmaps 1955 210-230 20860-1, 27498-9  
Ph Mention Owen, H 1897 Owen's Pembrokeshire Vol. 2  
Mm List PCM 1980 CardIndex E81  
Pm List RCAHM 1925 Pembrokeshire No. 462, p. 163  
Mm List RCAHM 1976 8c, PE  
Pm Map Rees, W 1932 S. Wales & Borderin 14th c. SW Sheet  
Mh Map Saxton, C 1578 Penbrok

## OTHER SOURCES

Report 4982.pdf

---

**PRN** 4983 **NAME** FFYNNON LLAWDDOG

**TYPE** HOLY WELL **PERIOD** Medieval

**NGR** SN1815239047 **COMMUNITY** Cilgerran

**CONDITION** **STATUS** None recorded **FORM** Place-name

## SUMMARY

## DESCRIPTION

**SOURCES** Mm AP Vertical Meridian Airmaps 1955 210-230 27522-3  
Mm List PCM 1980 Card Index E224  
Ph Desc Text Phillips 1867 History of Cilgerran p.51  
Pm List RCAHM 1925 Pemb No.80,p.31  
Mm List RCAHM 1976 11b,PE

### OTHER SOURCES

Report Hall, J and Sambrook, P 2009 CRYMYCH HUB HERITAGE AND  
NATURAL ENVIRONMENT AUDIT: PART B CILGERRAN COMMUNITY  
REPORT

---

**PRN** 52103 **NAME** TRE-CLYN-UCHAF

**TYPE** DEFENDED ENCLOSURE **PERIOD** Iron Age

**NGR** SN14803890 **COMMUNITY** Eglwysrw

**CONDITION** **STATUS** *None recorded* **FORM** Cropmark

### SUMMARY

An almost square sharp cornered cropmark enclosure c. 50m across.  
There is no surface evidence for this site. K Murphy 2004.

## DESCRIPTION

**SOURCES** Pm Desc Text Driver T 2002 Archaeology in Wales vol.42  
p.112

Mm Desc Text Murphy,K 2004 Assessment of Prehistoric Defended  
Enclosures 2004-5, Report No 2004-100 ACA Reports

### OTHER SOURCES

---

**PRN** 5726 **NAME** CWMBETTWS

**TYPE** CHAPEL **PERIOD** Medieval

**NGR** SN16483984 **COMMUNITY** Eglwysrw

**CONDITION** **STATUS** *None recorded* **FORM** Place-name

### SUMMARY

Place-name. 'Betws' element suggests that it may be the site of an

undated, unrecorded chapel. Nb the 'betws' element is late medieval usage (Thomas 1994). There is no current evidence for an early medieval date. NDL 2003

## **DESCRIPTION**

**SOURCES** Mm Mention Ludlow,N 2002 Cadw Early Medieval Ecclesiastical Sites Project,Part 1

Pm Map OS 1964 6" SN13 NE

Pm Mention Roberts,T 1992 Welsh Ecclesiastical Place-Names and Archaeology The Early Church in Wales & West,p. 41-44

## **OTHER SOURCES**

---

**PRN** 59301 **NAME** MAESYFELIN, BRIDELL

**TYPE** HOUSE **PERIOD** Post-medieval

**NGR** SN1681041045 **COMMUNITY** Cilgerran

**CONDITION** **STATUS** *listed building 14504 II* **FORM** Building

## **SUMMARY**

Grade II listed house

## **DESCRIPTION**

## **SOURCES**

## **OTHER SOURCES**

---

**PRN** 60506 **NAME** PANT Y DERI

**TYPE** UNKNOWN **PERIOD** Post-medieval

**NGR** SN1671437426 **COMMUNITY** Crymych

**CONDITION** **STATUS** *listed building 82944 II* **FORM** Building

## **SUMMARY**

Grade II listed unknown

## **DESCRIPTION**

## SOURCES

### OTHER SOURCES

---

**PRN** 7535 **NAME** PARC-YR-EGLWYS

**TYPE** CHAPEL **PERIOD** Medieval

**NGR** SN17403794 **COMMUNITY** Cilgerran

**CONDITION** Not Known **STATUS** *None recorded* **FORM** Earthwork

## SUMMARY

Possible site of St Meugan's well chapel? (PRN 995). NDL 2002

## DESCRIPTION

**SOURCES** Mm List DAT 1976 CR This site is possibly that of the mediaeval well chapel 995, See also holy well 12923

Mm List DAT 2002 Cadw early Medieval Ecclesiastical Sites Project, Part 1

Mm AP Vertical Meridian Airmaps 1955 210-230 20861-2, 27499-500

Mm Place-name OS 1966 SN13 NE1, 'Parc yr Eglwys'

Mm List OS 1966 SN13 NE1

### OTHER SOURCES

---

**PRN** 7669 **NAME** CASTELL COCH

**TYPE** FINDSPOT **PERIOD** Post-medieval

**NGR** SN16803830 **COMMUNITY** Eglwysrw

**CONDITION** **STATUS** *None recorded* **FORM** Finds

## SUMMARY

## DESCRIPTION

See DR998

**SOURCES** Mm List DAT 1977 CR 998

Mm Mention DAT 1977 DRF DRF 998

Mm Desc Text Williams,GH 1977 SRF

## **OTHER SOURCES**

---

**PRN 995 NAME** ST MEUGAN'S CHAPEL

**TYPE** WELL CHAPEL **PERIOD** Medieval

**NGR** SN173379 **COMMUNITY** Eglwyswrw

**CONDITION** **STATUS** *None recorded* **FORM** Documents

## **SUMMARY**

Site of chapel, mentioned c.1200 when granted to Slebech Commandery? (Conway Davies 1946, 362-4). Listed as pilgrimage chapel in c.1600 (Owen 1897,509). Associated with curative holy well (PRN 12923). Celtic dedication, probably post-Conquest. Formerly in Bridell parish. Possibly located at Parc-yr-eglwys (PRN 7535), at NGR SN 1739 3794. No current evidence for early medieval origins. NDL 2002

## **DESCRIPTION**

**SOURCES** Pm List Bowen,EG 1954 Settlements of the Celtic Saints in Wales p.91

Pm List Conway Davies,J 1946 Episcopal Acts Vol.4

Mm List DAT 1976 CR 7535,possible site of Chapel,12923,19979

Mm Desc Text Jones,F 1954 Holy Wells of Wales p.209

Mm Desc Text Ludlow,N 2002 Cadw Early Medieval Ecclesiastical Sites Project, Part 1

Pm Place-name OS 1964 6" Ffynon Meigan etc

Pm Map OS 1964 SN13 NE - 7 Meugan place-names

Mm List OS 1966 SN13 NE1

Ph List Owen,H 1897 Owens Pembrokeshire Vol.2

Mm List PCM 1980 Card Index E13,E425

Pm List RCAHM 1925 Pembrokeshire No.463,p.163-4

Pm Map Rees,W 1932 S.Wales & Border in 14th c. SW Sheet

## **OTHER SOURCES**

---

**PRN 998 NAME** CASTELL COCH

**TYPE** HILLFORT **PERIOD** Iron Age

**NGR** SN16783824 **COMMUNITY** Eglwysrw  
**CONDITION** Near Destroyed **STATUS** *None recorded*  
**FORM** Earthwork

## **SUMMARY**

## **DESCRIPTION**

**SOURCES** Mh Map Tithe Map & Apport,Llanfair Nant Gwyn Ph Schedule No.109,Field name "Parc Castell Coch"  
Mm List 1980 Card Index PrE 103  
Pm List Crossley,DW 1963 Bulletin of the Board of Celtic Studies Vol.20,p.205,No.81  
Mm List DAT 1982 CR 7669  
Pm List Laws & Owen 1908 Pembrokeshire Archaeological Survey 12-6  
Mm AP Vertical Meridian Airmaps 1955 210-230 20860-1,27498-9  
Mm Desc Text Murphy,K 2004 Assessment of Prehistoric Defended Enclosures 2004-5, Report No 2004-100 ACA Reports  
Pm List Nash-Williams,VE 1933 Archaeologia Cambrensis Vol.88,p.329,No.L28  
Mm List OS 1974 SN13 NE4  
Mm AP Vertical RAF 1946 106G-UK-1424 4455  
Pm List RCAHM 1925 Pembrokeshire No.460,p.163  
Mm Desc Text Williams,GH 1970 Hillforts in NE Pembrokeshire  
Mm Desc Text Williams,GH 1977 DRF

## **OTHER SOURCES**

Report Williams,GH 998-1.pdf  
Report 998.pdf  
Report Hall, J and Sambrook, P 2009 CRYMYCH HUB HERITAGE AND NATURAL ENVIRONMENT AUDIT: PART E EGLWYSRW COMMUNITY REPORT

---

Maps based upon Ordnance Survey material with the permission of Ordnance Survey on behalf of the Controller of Her Majesty's Stationery Office Crown copyright. Unauthorised reproduction infringes Crown copyright and may lead to prosecution or civil proceedings'. Welsh Assembly Government 100017916.

Archaeological data, from the Regional Historic Environment Record, supplied by The Dyfed Archaeological Trust in partnership with Local Authorities, Cadw and the partners of ENDEX DAT, 2011 (and in part Crown, 2011).

