

Photographical Survey Report.

**Melin Glandy, Mynachlog-Ddu,
Carmarthenshire, SA66 7RS.**



21ST SEPTEMBER 2020

**Ken Morgan Design &
Building Management Ltd**





PHOTO 1: Internal image facing the south eastern stone gable wall.



PHOTO 2: Internal image facing the southern corner of the building.



PHOTO 3: Internal image facing window 01 in the south western wall.



PHOTO 4: Internal image facing window 02 in the south western wall.

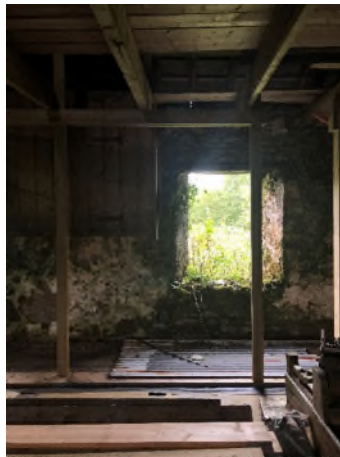


PHOTO 5: Internal image facing window 03 in the south western wall.



PHOTO 6: Internal image facing window 04 in the south western wall.



PHOTO 7: Internal image facing window 05 in the south western wall.



PHOTO 8: Internal image facing the opening access to the Leat.



PHOTO 9: External image facing the waterwheel and damaged gable wall.



PHOTO 10: External image looking down at the waterwheel.



PHOTO 11: Internal image facing the south eastern side of the building.



PHOTO 12: External image of the waterwheel.



PHOTO 13: External image of the damaged stone north western facing gable wall.



PHOTO 14: External image of the Leat.



PHOTO 15: Internal image of window 06 in the north eastern facing wall.



PHOTO 16: Internal image of door 02 which allows access to the Store.



PHOTO 17: Internal image of door 01 which is currently the main entrance to the building.



PHOTO 18: Internal image of window 07 in the north eastern facing wall.



PHOTO 19: Internal image of window 08 in the north eastern facing wall.

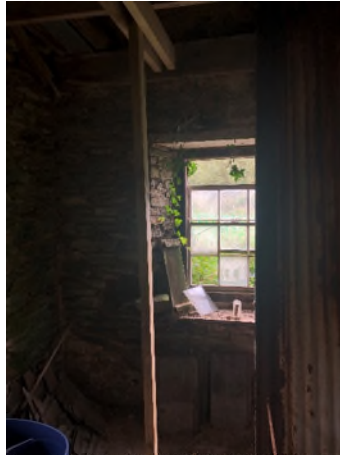


PHOTO 20: Internal image of window 09 in the south eastern facing wall.

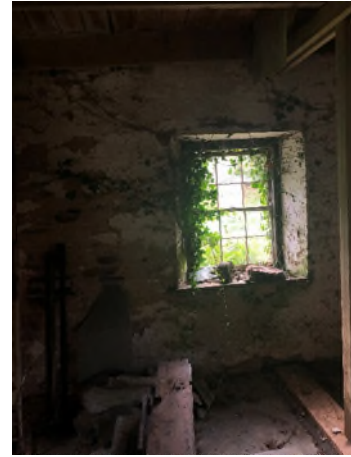


PHOTO 21: Internal image of window 10 in the south eastern facing wall.



PHOTO 22: Internal image facing the north western side of the building.



PHOTO 23: Internal image of the timber boxing between windows 02 and 03.

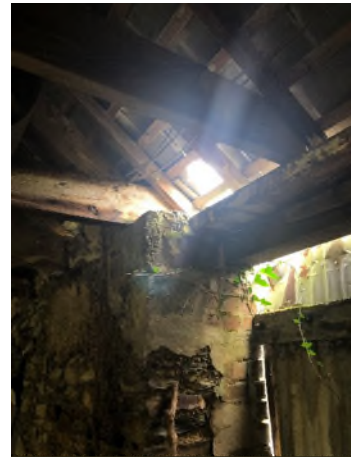


PHOTO 24: Internal image of where the roof joins the wall above the main door (door 01).



PHOTO 25: External image of the damaged south eastern facing store wall.



PHOTO 26: External image facing windows 07 & 08, and its immediate surroundings.



PHOTO 27: External image of window 08 and roof damage at eaves.



PHOTO 28: External image of South eastern facing gable and part north eastern elevation.



PHOTO 29: External image of the north eastern elevation with overgrown grass and landscaping hiding the store.



PHOTO 30: External image of the south eastern stone gable wall with windows 09 & 10.



PHOTO 31: External image of part south western elevation and south eastern gable.



PHOTO 32: External image of the south western elevation and its immediate surroundings.



PHOTO 33: External image of the south western elevation towards the Leat/Waterwheel end.



PHOTO 34: External image of window 05, roof damage at eaves and immediate surroundings.



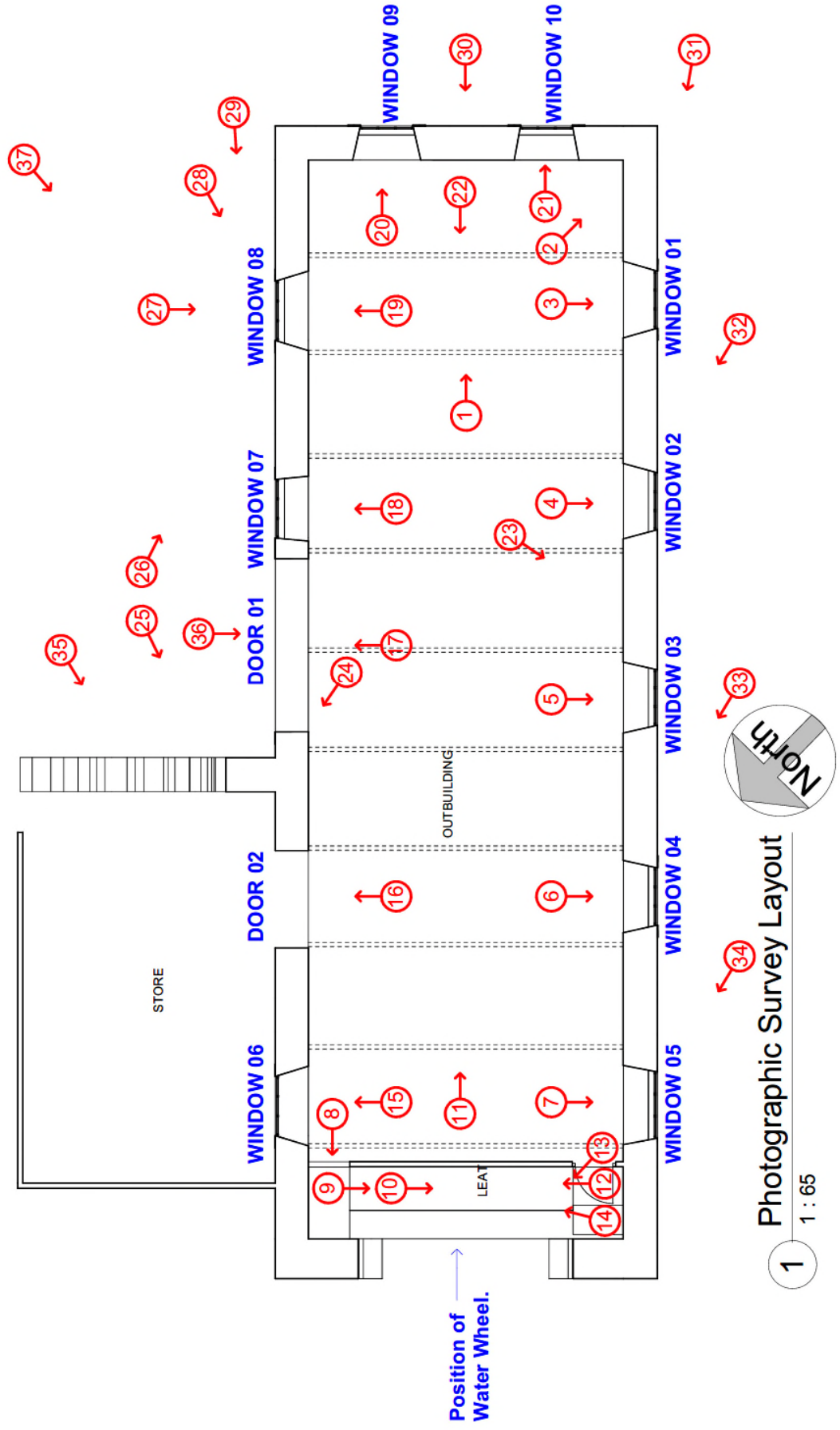
PHOTO 35: External image of the corrugated store located on the north eastern elevation of the building.



PHOTO 36: External image of the corrugated doors which acts as the main entrance to the building (door 01).



PHOTO 37: An eastern facing image of the entire building with its immediate surroundings (Grass, Landscaping etc).



Photographic Survey Layout

1 : 65