

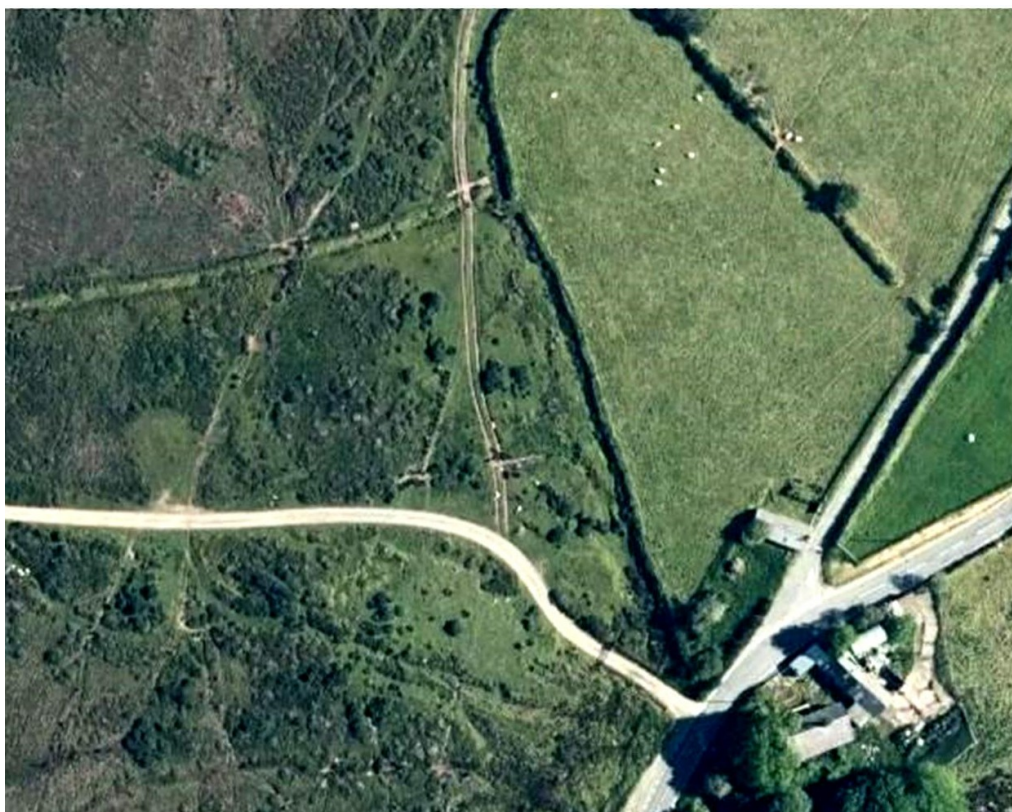
POTENTIAL ROMAN FORT AT TAFARN Y BWLCH SN 083 336

The old series map shows a square enclosure at Tafarn Y Bwlch. This map series doesn't show fields; it shows curtilages and roads. The square lies on a possible Roman route down to Wiston. It scales about 240m x 240m.

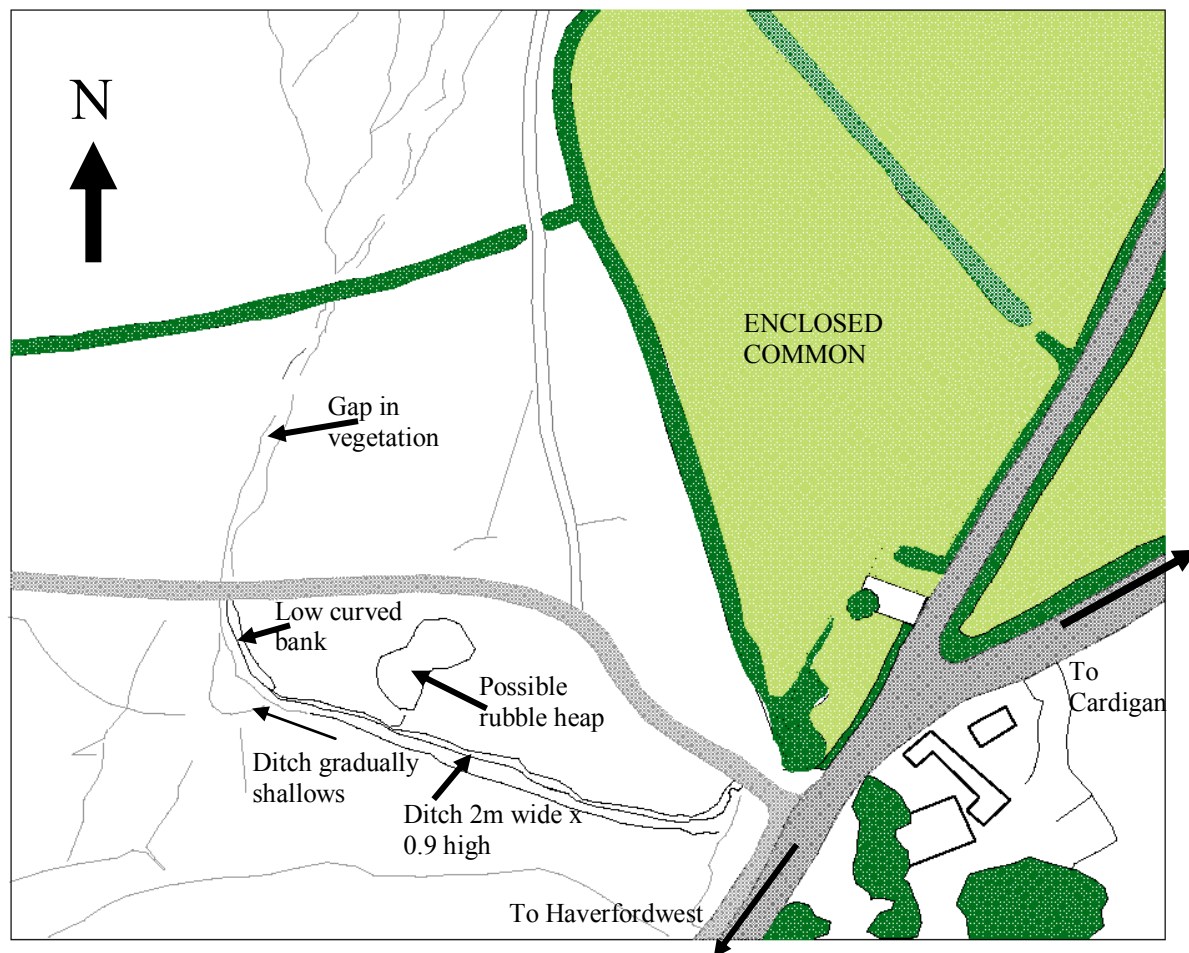


Investigation of the site shows that there is a feature surviving at Tafarn Y Bwlch with a substantial dry ditch corresponding with the south side of the square and two curved corners, although it is less than half the width. Unfortunately, there is no Lidar.

The enclosure on the Old Series map impinges on commons enclosures which are visible on the tithe map and correspond to those seen on the photo below. It could be that the enclosure which existed in 1820 was already robbed by 1840 for hedges to the new fields.



Aerial showing possible remains of an enclosure with ditch and SW curved corner as low bank (see drawing overleaf).



I have measured the south-east corner as shown, which has the same height of bank as the rest of the ditch. It is entirely possible that erosion of the east end of the south ditch has flattened the curve, which is not such a pure quadrant as the other corner. The enclosure would have been about 100m wide.

- The topography is good for a fort. The view down through Waun Brwynant towards the NE is remarkable. There is also a good view in the opposite direction. As a site for a fort with a commanding position, it would be difficult to better.
- There is no large stream as such, but there is plenty of water in the vicinity.
- The site is about 12 miles from Wiston.
- It is on my proposed Roman route.
- There is a nearby property called 'Castell Y Cynhen'. The castle of contention. This might indicate disagreement about what the feature was. The field at the bottom of the enclosed common was called Parc Yr Odyn, Kiln field. One wonders what a kiln was doing up here.
- The two sets of standing stones are outside the square.
- The old footpath followed the south ditch and changed direction at the end of it. This means that there were two routes at more or less right-angles to one another possibly keeping just outside of something.

Photos overleaf



Photo of ditch looking east



Photo of low banks forming rounded corner.

MARTIN DAVIES 30/1/17