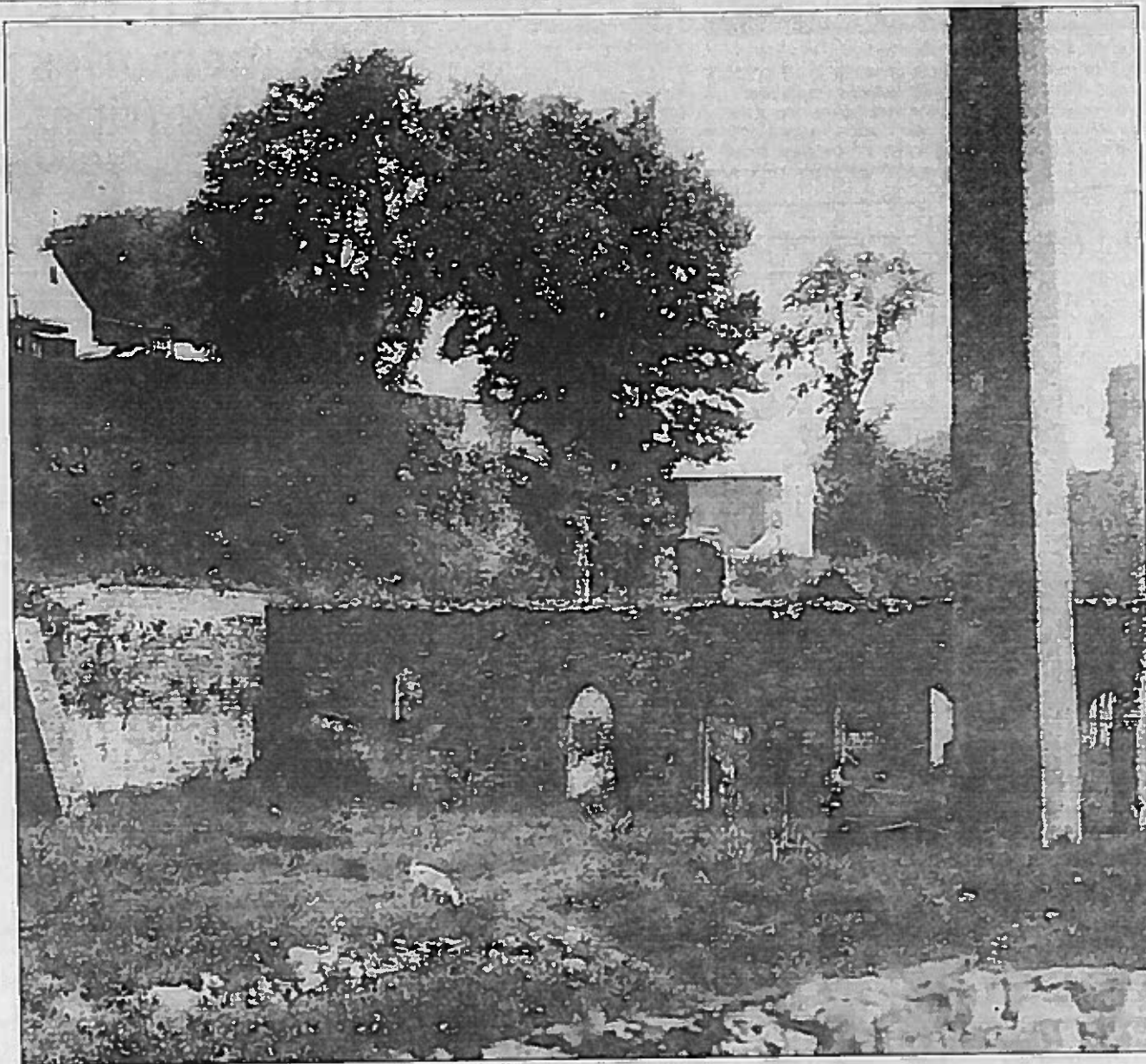


Got a nostalgia story?

Contact Graeme Wilkinson on 01267 227234 or
email graeme.wilkinson@swwmedia.co.uk



OLD WORKS: The ruins of Carmarthen's old tin works, where Jewsons is today.

area to use a Cornish beam engine with 50inch (125 cm) diameter cylinder to pump water from the workings.

The Vale of Towy mine was initially a success and became a major employer of men and boys in the area with some-

where in the region of 150 to 180 employed on the site not including those who transported the ore to the quay. The success

however was short lived and due to geological problems the mine was forced to close in 1866.