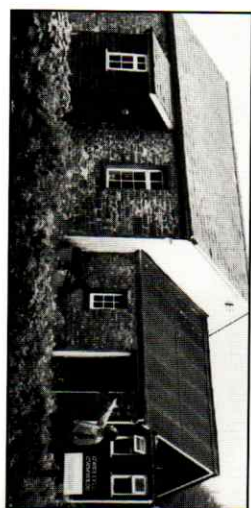


CWMWRDU

Built in 1832 by Rev William Rees on his land (Llainolau farm) and his remains and that of his family are interred in the cemetery of the chapel. He was born at Llanstephan near Carmarthen and died in 1844. He is described as a man of vigorous personality and accumulated a



considerable fortune which he lost and suffered imprisonment for debt. His son, William Rees became the minister of Rhydygwin and Ciliau Aeron Chapels in Ceredigion and there has always been a close affinity between Rhydygwin and Cwmwrdu. He died in 1893 at Llainffynnon, Cribyn and his wife was a niece of Rev John Davies, Unitarian Minister at Neath. Their grave is at Rhydygwin Chapel near Felinfach.

Services ceased at Cwmwrdu in the early 1900's and the building was used by local residents for serving refreshments at the local Sheep Dog Trials, until the Welsh Unitarian young people took it over in 1961 as a Centre for children and young people. It was a popular centre for this purpose for almost forty years but health and safety regulations confined its use somewhat and consideration is being given now to the centre being used as a Retreat and Family Centre.

LOCATION

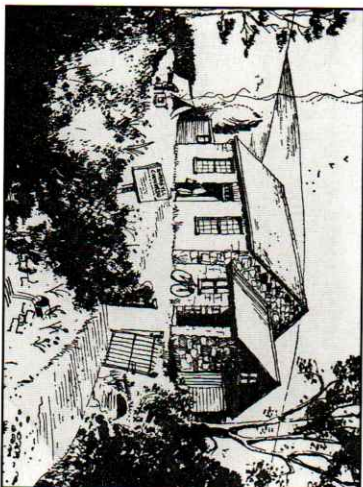
Cwmwrdu stands on the road between Brechfa and Gwernogle about a mile and a half off the B4310. Follow the road from the A40 and turn towards Brechfa at the village of Nantgaredig.

To see

Gravestone to William Rees and family on the outside of the chapel.

FURTHER READING

Cwmwrdu as a Youth Centre By Robert Davies.



CAPEL CWM COTHI

It was in this area that Rev Thomas Evans established the first Unitarian Meeting House in Wales - at a very remote spot about 3 miles from Cwmwrdu. Thomas Evans (Tomos Glyn Cothi) was imprisoned for two years in 1801. He was reported for singing a seditious song against the king at a charity evening in support of a neighbour. His congregation supported him and it is possible that this event led to the establishment of the Welsh Unitarian Association in 1802 at the instigation of Iolo Morganwg and others.

There is little left of the Cwm Cothi chapel by now - a pile of stones remains to remind us of the heroism and the perseverance of the time. The Forestry Commission has fenced around the ruins and placed a small gate as an entrance but it is overgrown and difficult to find.



Tomos Glyn Cothi was born in the village of Gwernogle and a plaque has been placed on his home in the middle of Gwernogle village (on right hand side before the river bridge).

Tomos Glyn Cothi was born in the village of Gwernogle and a plaque has been placed on his home in the middle of Gwernogle village (on right hand side before the river bridge).

LOCATION

Capel Cwm Cothi can be found by taking a car from Cwmwrdu towards Brechfa and take the first left off the B 4310 (before Brechfa) towards Fellingwm and Llanfynydd. The river Cothi flows on the right hand side and in about a mile or so a footbridge crosses the river on to a farm. Ask there for further instructions.



Capel Cwm Cothi