

A quadrilateral sectioned, flat-topped block of stone standing only 65 cm above the existing ground level.

Although the immediate area is free of stony clutter, a zone of outcrops & erratics lies just to the S.

Is it a standing stone?

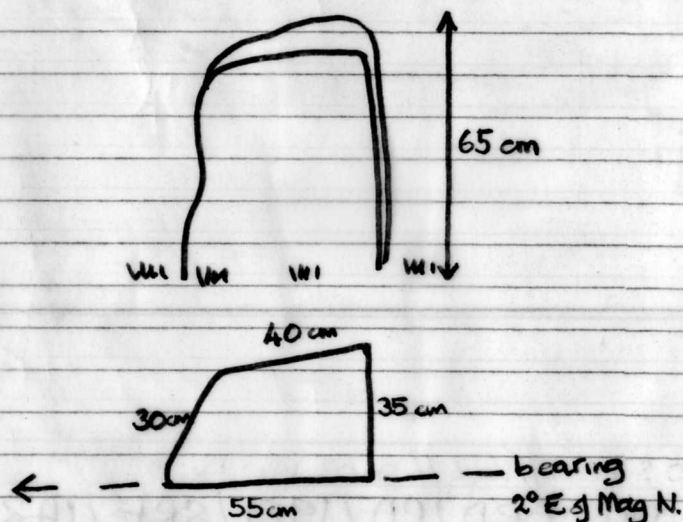
Pro

i) Adjacent to a possible cairn (PRN 1440)

ii) A rectangular block set neatly on its end, whereas the natural erratics in the area are usually irregular in shape.

Anti

i) very small.



OWNERSHIP AND TENANCY DETAILS