

Nov 2008

# BERRY COTTAGE, TOWER HILL FISHGUARD

## Archaeological Watching Brief

Report No 2008/107



Prepared by Dyfed Archaeological Trust  
For: Mr P Kedward



ymddiriedolaeth archaeolegol

**DYFED**  
archaeological trust

## DYFED ARCHAEOLOGICAL TRUST

RHIF YR ADRODDIAD / REPORT NO. 2008/107  
RHIF Y PROSIECT / PROJECT RECORD NO. 94524

Tachwedd 2008  
November 2008

### Berry Hill, Tower Hill, Fishgurard Archaeological Watching Brief

Gan / By

**Pete Crane BA Hons MIFA**

*Paratowyd yr adroddiad yma at ddefnydd y cwsmer yn unig. Ni dderbynnir cyfrifoldeb gan Ymddiriedolaeth Archaeolegol Dyfed Cyf am ei ddefnyddio gan unrhyw berson na phersonau eraill a fydd yn ei ddarllen neu ddibynnu ar y gwybodaeth y mae'n ei gynnwys*

*The report has been prepared for the specific use of the client. Dyfed Archaeological Trust Limited can accept no responsibility for its use by any other person or persons who may read it or rely on the information it contains.*

Ymddiriedolaeth Archaeolegol Dyfed Cyf  
Neuadd y Sir, Stryd Caerfyrddin, Llandeilo, Sir  
Gaerfyrddin SA19 6AF  
Ffon: Ymholiadau Cyffredinol 01558 823121  
Adran Rheoli Treftadaeth 01558 823131  
Ffacs: 01558 823133  
Ebost: [info@dyfedarchaeology.org.uk](mailto:info@dyfedarchaeology.org.uk)  
Gwefan: [www.archaeolegdyfed.org.uk](http://www.archaeolegdyfed.org.uk)

Dyfed Archaeological Trust Limited  
The Shire Hall, Carmarthen Street, Llandeilo,  
Carmarthenshire SA19 6AF  
Tel: General Enquiries 01558 823121  
Heritage Management Section 01558 823131  
Fax: 01558 823133  
Email: [info@dyfedarchaeology.org.uk](mailto:info@dyfedarchaeology.org.uk)  
Website: [www.dyfedarchaeology.org.uk](http://www.dyfedarchaeology.org.uk)

Cwmni cyfyngedig (1198990) ynghyd ag elusen gofrestredig (504616) yw'r Ymddiriedolaeth. The Trust is both a Limited Company (No. 1198990) and a Registered Charity (No. 504616)

**CADEIRYDD CHAIRMAN: C R MUSSON MBE B Arch FSA MIFA. CYFARWYDDWR DIRECTOR: K MURPHY BA MIFA**

## **CONTENTS**

SUMMARY	1
INTRODUCTION	1
METHODOLOGY AND RESULTS	1
CONCLUSION	2
ARCHIVE DEPOSITION	2
SOURCES	2
Figure 1: Berry Cottage location	2
Figure 2: Location of development	3
Photo 1. Site after checking bedrock for features	3

*Cover Photo.: Location of development prior to start. View SE*

## SUMMARY

*A short watching brief was undertaken on a small detached building on the east site of Berry Cottage, Tower Hill, Upper Fishguard. No archaeological features were observed.*

## INTRODUCTION

Dyfed Archaeological Trust (DAT) Field Services were asked by Mr Kevin Siggins, agent to Mr P Kenwood to provide specifications and costs to fulfil a Grampian condition on a planning application, Local Planning Authority (LPA) number 07/1648/PA, for a detached building in part of the garden of Berry Cottage, Tower Hill Fishguard (NGR SM9611370). DAT produced specifications for a watching brief that was accepted by the LPA and then commissioned by Mr P Kenwood.

The site lies in a prominent elevated position overlooking Lower Fishguard Harbour (Fig. 1). It is about 40m below the crest of the Tower Hill, near an ancient cemetery (Primary Record Number (PRN) 2559) first recorded in 1811 (Fenton, 318), *"The graves..., when discovered, had a remarkable appearance; they were cut out of the solid rab, mostly of the parallelogram figure, though some of the smallest were very shallow oval excavations; the bones in all were burnt, and in most of the larger ones were small urns of various shapes, though unornamented, and of much better unglazed pottery than any of those found in the tumuli or Carneddau which are invariably coarse, half baked and always ornamented. These vessels generally lay in one corner of the grave, in which likewise found several pieces of iron of a pointed form, varying in size from that of a common spike nail to one of about three or four inches long... Among the ashes were several small wrought stones of different shapes and sizes, particularly one of a softer texture, circular with a hole in the middle..."* Given the description of the grave goods and the iron objects a Bronze Age date can be ruled out, for those graves at least. Therefore it is likely that these graves are either: very late Iron Age, early Roman, or pagan post Roman.

This cemetery has also been postulated as the site of a medieval chapel, PRN 2514, Capel y Drindod, but some consider this very doubtful (DAT HER internal records).

## METHODOLOGY AND RESULTS

The watching brief was undertaken on the morning of 20 November 2008. The weather was fine but cool, with broken cloud. The building plot was in the southeast corner of the garden (cover photo. and Fig. 2). The footprint cleared was 4.8m out from the rear garden wall and 7.2m long.

A small 360° tracked digger using a toothless bucket removed most of the topsoil down to just above, the almost level, orange-brown shale bedrock (known locally as rab) with some orange-brown clay in a few places. The topsoil was a very dark grey silty-loam, with a few small pebbles and angular flakes of stone, typical good garden soil, and was from 0.15m deep at the rear of the plot to about 0.25 deep at the front. Below this topsoil, and immediately on the bedrock, there was a thin layer of Tarmac in the middle of the eastern end of the development: probably an old path. There was also a thin grey soil deposit with slate fragments towards the northwestern corner: possibly a garden feature or backfilled hole.

The machined then reduced entire top of the bedrock by 0.1m to 0.2m, using a toothed bucket, to make certain that no archaeological features were cut into it (Photo. 1). As there were no features the watching brief was curtailed and the contractor was left to excavated the footprint of the building to the depth required.

## CONCLUSION

The surface of the bedrock only sloped very slightly and it appeared that the natural hill-slope has been considerably terraced, leaving little chance of archaeological survival at this location.

## ARCHIVE DEPOSITION

DAT HER will initially hold the archive.

## SOURCES

Fenton R 1811. A Historical Tour Through Pembrokeshire, 2nd edition 1903, facsimile edition by Dyfed County Council Cultural Services Department 1994.



Reproduced from the 1997 Ordnance Survey 1:50,000 scale Landranger Map with the permission of The Controller of Her Majesty's Stationery Office, © Crown Copyright Cambria Archaeology, The Shire Hall, Carmarthen Street, Llandeilo, Carmarthenshire SA19 6AF. Licence No AL51842A.

Figure 1: Location of Berry Cottage

Berry Cottage, Tower Hill, Fishguard  
Archaeological Watching Brief

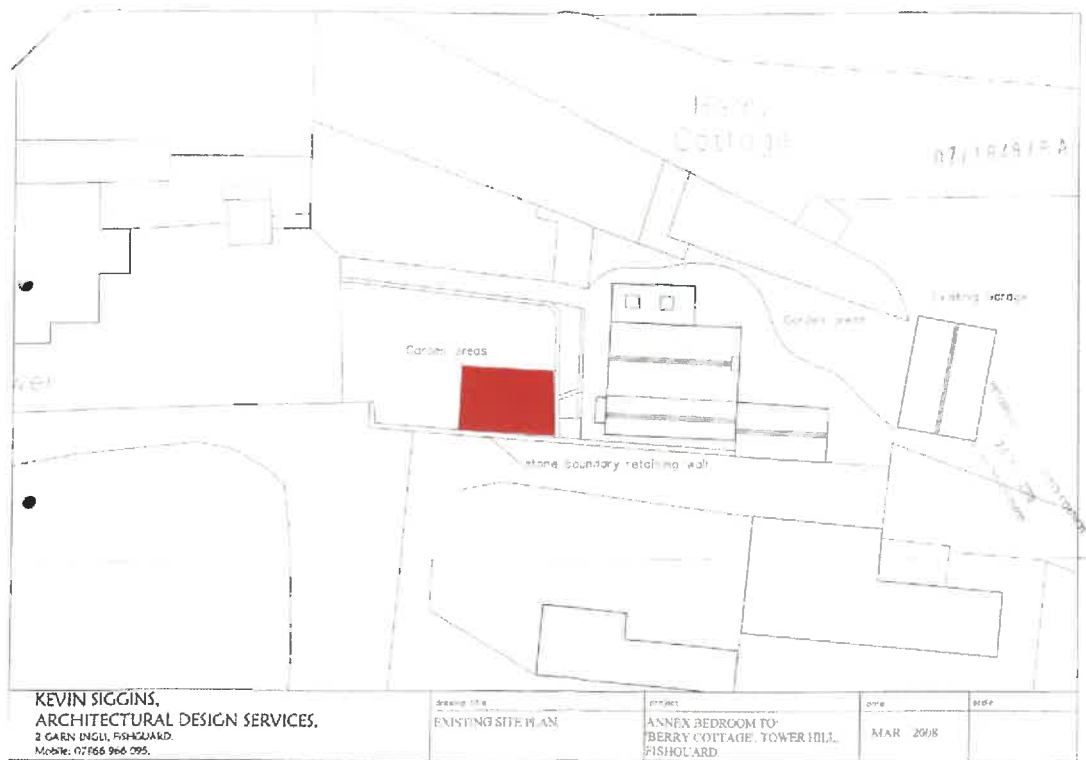


Figure 2: Location of development. Plan provided by Kevin Siggins.



Photo. 1: Site after checking the top of bedrock for any features. View W

# Berry Hill, Tower Hill, Fishgurard Archaeological Watching Brief

**RHIF YR ADRODDIAD / REPORT NUMBER 2008/107**

**Tacwedd 2008  
November 2008**

Paratowyd yr adroddiad hwn gan / This report has been prepared by  
Pete Crane

Swydd / Position: Senior Archaeologist

Llofnod / Signature  Dyddiad / Date 21.11.08

Mae'r adroddiad hwn wedi ei gael yn gywir a derbyn sêl bendith  
This report has been checked and approved by

Ken Murphy

ar ran Ymddiriedolaeth Archaeolegol Dyfed Cyf.  
on behalf of Dyfed Archaeological Trust Ltd.

Swydd / Position: Trust Director

Llofnod / Signature  Dyddiad / Date 21.11.08

Yn unol â'n nôd i roddi gwasanaeth o ansawdd uchel, croesawn unrhyw sylwadau sydd  
gennych ar gynnwys neu strwythur yr adroddiad hwn

As part of our desire to provide a quality service we would welcome any comments you may  
have on the content or presentation of this report