

SCHEDULING ENHANCEMENT PROJECT 2009: PREHISTORIC SITES FIELDWORK - CARMARTHENSHIRE



Prepared by Dyfed Archaeological Trust
For Cadw



ymddiriedolaeth archaeolegol
DYFED
archaeological trust

DYFED ARCHAEOLOGICAL TRUST

RHIF YR ADRODDIAD / REPORT NO.2009/11
RHIF Y PROSIECT / PROJECT RECORD NO.63966

Mawrth 2009
March 2009

SCHEDULING ENHANCEMENT PROJECT 2009: PREHISTORIC SITES FIELDWORK - CARMARTHENSHIRE

Gan / By

F. Murphy, R. Ramsey, and M. Page

Paratowyd yr adroddiad yma at ddefnydd y cwsmer yn unig. Ni dderbynnir cyfrifoldeb gan Ymddiriedolaeth Archaeolegol Dyfed Cyf am ei ddefnyddio gan unrhyw berson na phersonau eraill a fydd yn ei ddarllen neu ddibynnu ar y gwybodaeth y mae'n ei gynnwys

The report has been prepared for the specific use of the client. Dyfed Archaeological Trust Limited can accept no responsibility for its use by any other person or persons who may read it or rely on the information it contains.



Llywodraeth Cynulliad Cymru
Welsh Assembly Government

Ymddiriedolaeth Archaeolegol Dyfed Cyf
Neuadd y Sir, Stryd Caerfyrddin, Llandeilo, Sir
Gaerfyrddin SA19 6AF
Ffon: Ymholiadau Cyffredinol 01558 823121
Adran Rheoli Treftadaeth 01558 823131
Ffacs: 01558 823133
Ebost: info@dyfedarchaeology.org.uk
Gwefan: www.archaeolegdyfed.org.uk

Dyfed Archaeological Trust Limited
The Shire Hall, Carmarthen Street, Llandeilo,
Carmarthenshire SA19 6AF
Tel: General Enquiries 01558 823121
Heritage Management Section 01558 823131
Fax: 01558 823133
Email: info@dyfedarchaeology.org.uk
Website: www.dyfedarchaeology.org.uk

Cwmni cyfyngedig (1198990) ynghyd ag elusen gofrestredig (504616) yw'r Ymddiriedolaeth. The Trust is both a Limited Company (No. 1198990) and a Registered Charity (No. 504616)

CADEIRYDD CHAIRMAN: C R MUSSON MBE B Arch FSA MIFA. CYFARWYDDWR DIRECTOR: K MURPHY BA MIFA

CONTENTS

SUMMARY	2
INTRODUCTION	3
PROJECT AIMS AND OBJECTIVES	4
METHODOLOGY	5
Figure 1: Map of Carmarthenshire, showing the location of sites visited during the project.	6
RESULTS	7
DATABASE GAZETTEER	12
ACKNOWLEDGEMENTS	49
REFERENCES	49

SUMMARY

In 2007 Cadw commissioned Dyfed Archaeological Trust to undertake an assessment of the minor site types within the regional Dyfed Historic Environment Record for which there was a known or potential under representation within the Schedule of Ancient Monuments. Three distinct site groups were identified in this study:

- *Prehistoric settlement and associated agricultural remains*
- *Roman non-military sites*
- *Medieval Fortified Dwellings*

The aim of this specific project was to evaluate all sites within Carmarthenshire that fell into the category of 'prehistoric settlement and associated agricultural remains' on the regional Dyfed Historic Environment Record that have not been the subject of a previous threat-related assessment. In total 135 sites were identified and a desk based assessment of each record was carried out. 127 sites were visited during 2008, the majority of which were located on the Black Mountain. During the course of the field visits the condition of each site was considered and a threat related assessment undertaken. It was discovered that a number of sites had been destroyed, whilst the condition of others had degraded.

INTRODUCTION

In 2007-2008 Dyfed Archaeological Trust undertook a study for Cadw *Appraisal of Minor Site Types in Dyfed: Prehistoric, Roman and Medieval Fortified Dwellings*. This was an assessment of the minor site types within the regional Dyfed Historic Environment Record (HER) for which there was a known or potential under representation within the Schedule of Ancient Monuments. It had been anticipated that by 2010 the proposed Heritage Protection Reform bill would be implemented, and it was intended that all sites of prehistoric and Roman date would be reviewed and, as far as possible, the Schedule of Ancient Monuments complete and correct for all nationally important archaeological sites for which scheduling was the appropriate management tool. However, the passage of the Heritage Protection Reform bill through Parliament has been postponed, and perhaps cancelled, but the date of 2010 for assessing all sites is still considered achievable.

Southwest Wales has a rich heritage of prehistoric sites. Funerary and ritual monument, and defended enclosures have been assessed over the years, but many of the less easily classified sites have not been assessed but are vital to our understanding of the prehistory of the area. One group of sites that appeared under represented within the Schedule was prehistoric settlement and associated agricultural remains. In 2007 a database was compiled of those sites within the regional HER that fell within this category and were located in the county of Carmarthenshire. The desktop element of the project was undertaken, and dossiers collated for each site for which a site visit was deemed necessary. A specific project was then proposed to enable the field assessment of such sites within Carmarthenshire, for the purpose of updating the records as well as the identification of those examples, which were of potentially national importance. In 2008-2009 this project *Scheduling Enhancement Project: Prehistoric Sites Fieldwork – Carmarthenshire* was undertaken.

PROJECT AIMS AND OBJECTIVES

The main aim of this project is to assess the prehistoric settlement sites within Carmarthenshire on the regional Dyfed HER that have not been the subject of a previous threat-related assessment.

The overall project aims are:

- An application of definition, classification, quantification and distribution of these sites in Carmarthenshire
- Assessment of the archaeological significance of these sites in both a regional and national perspective.
- Assessment of the vulnerability of this element of the archaeological resource, review of scheduling criteria, and recommendations for future management strategies.
- Enhancement of the regional HER.

The overall project objectives are:

- To carry out a site visit to each site identified as requiring a visit in the desk-top element of the project.
- To carry out a threat-based assessment for each site.
- To incorporate all the information into a database and enhance and update the main records on the regional Dyfed HER.
- To report on the project results.
- To advise Cadw on those sites which are of national value and currently without statutory protection.

METHODOLOGY

The desk-top element of this project, undertaken by Dyfed Archaeological Trust in 2007, identified settlement sites of prehistoric date in Carmarthenshire that might not have been the subject of a previous threat-related assessment. From this database of approximately 400 records 135 sites were judged to require a site visit. A dossier was compiled for each of these 135 sites. These dossiers consisted of published records, Ordnance Survey cards, cartographic records and aerial photographs, and for use in this proposed element of the project – fieldwork, database compilation and reporting.

The following methodology was followed:

- Field recording. A site visit was made to each site identified as requiring a visit in the desktop element of the work. Pro-forma site recording sheets were completed for all site visits, and digital photographs recorded significant aspects of each site. An accurate grid reference for each site was recorded using a Global Positioning System device.
- Database records. Data collected on the pro-forma sheets was used to update the main HER.
- Reporting. A project report was compiled. A second report containing scheduling recommendations and other recommendations was produced for Cadw.

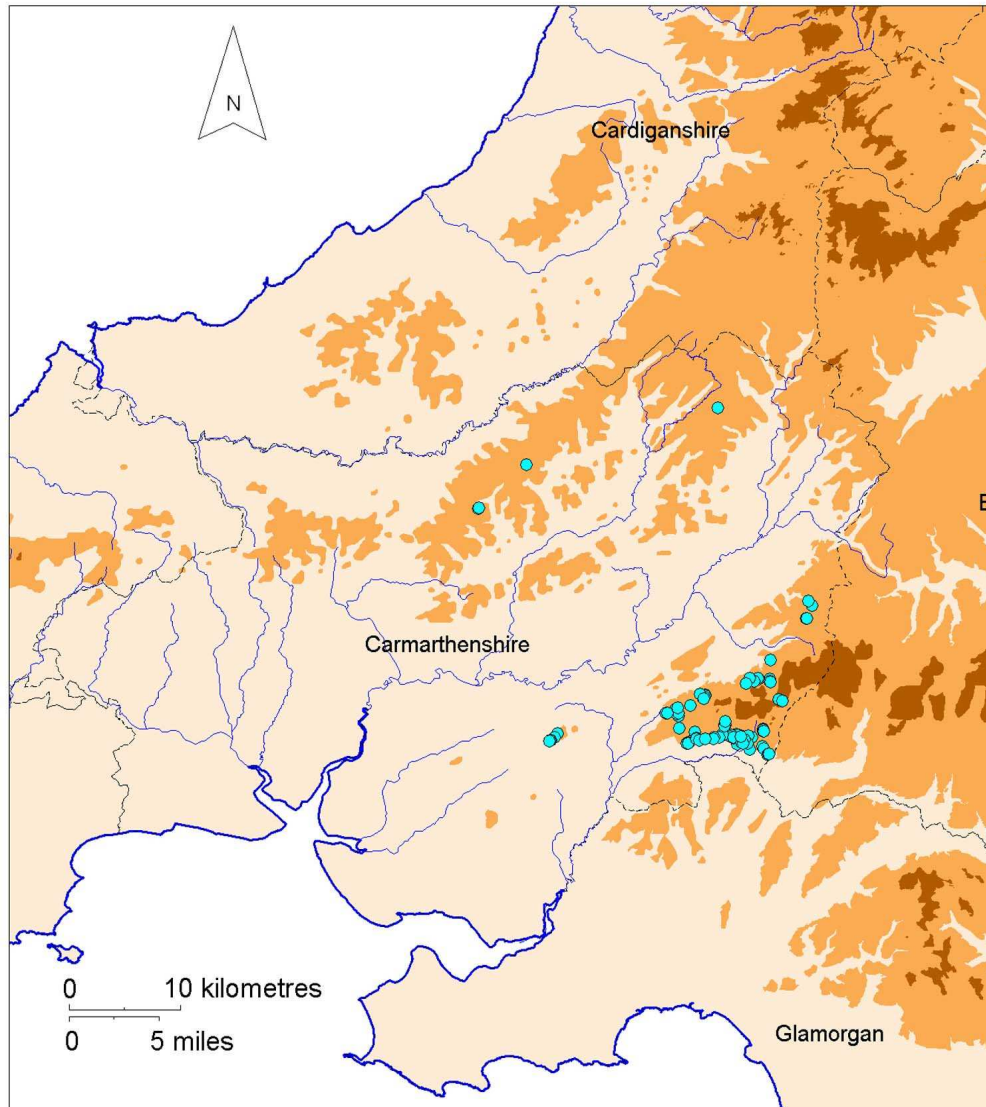


Figure 1: Map of Carmarthenshire, showing the location of sites visited during the project. The majority of the sites were situated on unenclosed moorland, and the map shows the bulk of these were concentrated on the Black Mountain.

RESULTS

127 prehistoric settlement sites were visited in the late spring of 2008. The majority of the sites visited were situated on unenclosed moorland, and the largest group of sites was located on the Black Mountain and its surrounding area (Figure 1). Previous studies of the archaeology of the Black Mountain primarily by Dyfed Archaeological Trust in 1988 and 1989, and the RCAHMW in 1986 formed the basis for the records within the HER that were examined for this project. For this project much use was made of the relevant site type descriptions for structures recognised on the moorland surface as compiled by the RCAHMW during their survey work in the area during the 1980s (RCAHMW 1997). They are as follows:

Cairns- heaps of stones in the form of grassy mounds or loose rubble found singly or in groups. Present in a range of shape and size, usually circular or oval but often of amorphous shape.

Enclosures – defined by linear or curvilinear **stony banks**. They are of variable area and shape.

Field systems – whose component parts are defined by linear or curvilinear **stony banks**.

Hut circles – are small enclosures defined by a single ring bank, sometimes incorporating small boulders, of circular or slightly oval plan, and with or without a visible entrance gap. Most are poorly preserved – some are defined only by a discontinuous line of stones protruding through the turf and are dubious examples.

Platforms – level or gently sloping terraces cut into rising ground, are usually rectangular in shape, occasionally oval or circular.

Rectangular or rectilinear foundations – are the footings of rectangular buildings defined by stony banks, stone blocks or coursed drystone masonry, sometimes they rest upon platforms. These structures are often associated with small foundations resembling hut circles of circular or oval plan.

The main results of the fieldwork can be summarised in the following:

- Problems of identification were frequently encountered during the fieldwork. Many of the sites were hard to distinguish in appearance, which had in the past led to more than one interpretation of their purpose and date. What were once upstanding walls are now spread obscuring entrances and the original shape of the feature, or resulting in heaps of stone that have the appearance of small cairns. Vegetation overgrowth can mask the feature, and it can be very difficult to distinguish between man made features and natural spreads of stone in a landscape that includes extensive areas of ground covered with rock debris.
- Only a few sites have been excavated satisfactorily and none have been dated scientifically. Despite this the majority of these sites can be broadly assigned to one period or another on the basis of their similarity to monuments elsewhere in the country, some of which have been more securely dated.

- It became apparent during the fieldwork that many sites had been formerly recorded more than once under different record numbers, normally due to differing and inaccurate grid references, or that sites believed to be duplications were in fact separate sites. During the fieldwork all these inaccuracies were amended and any duplication in the records corrected.
- Every site was fully described and its relationship to other nearby structures assessed, so that the identification of site groups could be attempted and this information put onto the respective HER record. This also helped in the broad assignment of monuments. For example, hut circles bear a resemblance to small animal pens of putative Medieval date, but the latter are normally associated with rectangular buildings, and similarly the foundations of circular buildings are comparable in form to that of ritual ring cairns but ring cairns are not associated with other settlement features such as enclosures, boundaries, groups of clearance cairns or hut circles.
- A threat based assessment for each site was made but owing to the disparate nature of the sites no one threat could be identified. It was apparent that sites on agricultural land were suffering from slow degradation, and a hut circle (PRN 8889) on the edge of enclosed land and recorded by the Ordnance Survey in 1977 as a good surviving monument was discovered to have been completely destroyed. On open moorland many structures have survived quite well because of the relatively low intensity of land use over the centuries. However, erosion and disturbance by animals and human visitors particularly in areas more easily accessible to the public, was evident though hard to quantify. There are also natural erosion processes such as the eroding effects of rivers and streams and natural subsidence, for example in limestone areas, where settlement sites commonly occur.
- Extensive work on the relevant records within the HER was completed following the conclusion of the fieldwork. A large number of site records that were in various ways associated with the sites visited also had to be updated, particularly where site type definitions had changed or different site groups identified.
- The fieldwork identified few unique monuments worthy of additional protection. However, the fieldwork confirmed the interesting character of several site groups. One group east of Nant Garw is marked on the current 1:25 000 Ordnance Survey map as a *Settlement*. This group (overall group PRN 32174) has a cohesive appearance and covers an area of approximately 1.5 hectares. It is situated on a fairly level southwest-facing gentle slope at 310m above sea level, east of the river cutting of the Nant Garw, and includes a number of hut circles and a distinctive larger enclosure (PRN 32178) with two entrances (pictured below) that is linked to a hut circle by a linear wall. There are other less well-defined structures spread about the area as well.



PRN 32178 An unusual feature - a roughly circular enclosure 11.5m in diameter that lies on a gentle south facing slope overlooking the Nant Garw valley. It has an 'entrance annexe' on the NW approx. 2.5m square, and another entrance gap on the east of the ring, from which a wall runs to the NE for 50m at the end of which is a hut circle.

- This group does appear to be the remains of a prehistoric settlement, in stark contrast to the rectangular buildings of the small medieval/post medieval settlements located by the banks of the Nant Garw within the river cutting, as seen below.



PRN 32200 Medieval/post medieval long house on the west bank of the Nant Garw.

- Another noteworthy group of sites is situated on the southwest-facing slopes of Garreg Lwyd east of Nant Gwyn, (group PRN 32209) between 270m and 340m above sea level. The sites may well be of more than one period, but the overall impression is that it is an extensive area of prehistoric settlement, with some later additions and perhaps some reuse of earlier features *i.e.* hut circles reused as shooting stands. The sites are distributed across a linear area approximately 650m SW-NE by 160m NW-SE, of approximately 9.8 hectares. They are concentrated in two distinct groups: one to the southwest and the other to the northeast. The settlement evidence to the southwest is more distinctive and includes hut circles (such as those pictured below), oval and rectangular enclosures, and rectangular platforms. Also visible are lengths of wall that appear to be field boundaries surrounding cleared areas of ground. To the edge of these are small clearance cairns.

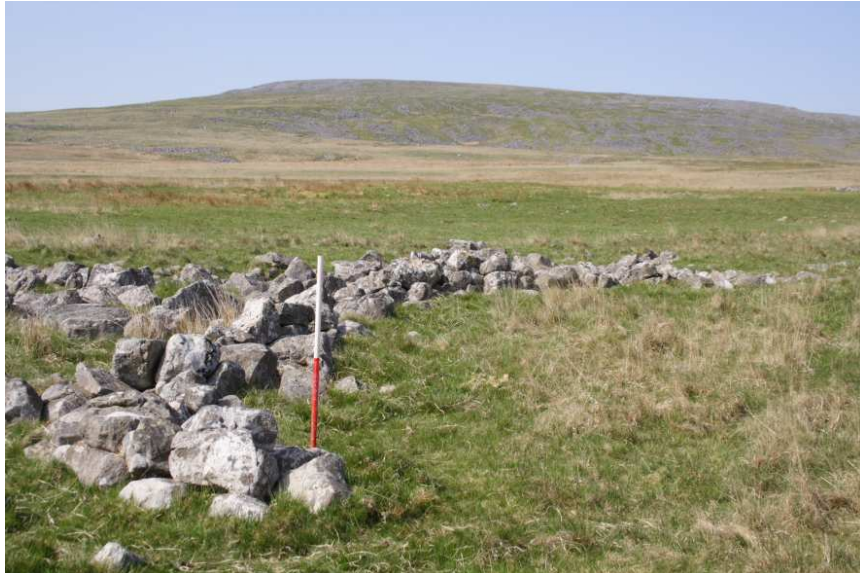


PRN 32212 Situated on a steeply sloping SW facing slope north of boggy ground that falls southwards to the Aman valley. Good views to south and west. The hut circle is slightly terraced into the hillside on the north



PRN 32213 A possible hut circle scooped out of the hillside. It measures 5m SE-NW by 3.5m. It is terraced into the hill on the NE, and revetted on the SW.

- The second group of sites lies approximately 280m to the northeast. The sites are more diverse in character and do not have the unified appearance that the group to the southwest have. However, it does comprise unusual structures such as a crescent shaped segment of walling shown below:



PRN 32228 A crescent shaped segment of walling. It measures 10m NE-SW across the chord, bowing out some 3.5m to the NW and averages about 0.8m wide, 0.5m high. There is a gap in the wall on the west.

DATABASE GAZETTEER

For ease of handling the gazetteer has been arranged by PRN number. Each updated PRN entry comprises a printout from the Historic Environment Record, including a site description.

PRN: 718 **NGR:** SN54613940
SITE NAME: CAREG-HIR
SITE TYPE: Standing stone,Milestone,Boundary stone
FORM: O.Struct
CONDITION: Substantially intact

SUMMARY:

'Garreg hir' is a stone slab, 1.0m high 0.1m thick and 0.8m wide, set on edge and orientated approximately N-S. Its purpose and date are not apparent. It is situated in an area of grass, between the road and a forestry plantation. F Murphy 2008

LONG DESCRIPTION:

"'Y Garreg hir' an erect stone only 38 inches in height. A similar stone is said to have been removed about half a mile to the north-west." (RCHAM 1917)

PRN: 4,000 **NGR:** SN67201762
SITE NAME: GARREG LAS
SITE TYPE: Hut circle
FORM: Earthwork
CONDITION: Damaged

SUMMARY:

The remains of a small Late Bronze Age/Early Iron Age hut circle with a larger appended enclosure to the north-west. Scheduled Ancient Monument CM204.

LONG DESCRIPTION:

Site visit 22/05/08 - no change from previous description by the Ordnance Survey, although it was noted that the RCAHMS believe the field system PRN 3046 is associated with this site. F Murphy 2008

Situated at SN67201762 on a north-west facing hillslope at 265m above sea level, are the remains of a roughly circular hut 6.0m in diameter, with a conjoined enclosure 20m in diameter. Both are bounded by partly turf-covered rubble walls up to 0.3m high, and averaging 1.5m wide. the hut circle has a levelled interior and a west facing entrance gap; it is set into the perimeter of the enclosure on the uphill east side. The site is of probable Late Bronze Age/Iron Age date. Evidence for an associated field system is not obvious, but the lower area of the hill slope to the northwest is relatively clear of stone. (Ordnance Survey 1976)

PRN: 4,478 **NGR:** SN705189
SITE NAME: CARN CENNEN
SITE TYPE: Field system
FORM: Earthwork
CONDITION: Damaged

SUMMARY:

Possible prehistoric field system identified from aerial photography.

LONG DESCRIPTION:

This feature was not located in 2008. F Murphy & R Ramsey 2008

Three lines of approx. parallel stone-banks of a field system run along the contours of the N facing slope E of the Cennen gorge. The best preserved upper wall runs mostly on or near the crest. The middle one is very slight and can be seen on APs just below the quarrying complex (PRN 4425) running through scree. This could not be seen on the ground. The lower one again looks quite distinct from the air. Probably part of the same system to the west (PRN 2473). (TAJ 16-2-87)

PRN: 8,889 **NGR:** SN76412230
SITE NAME: NANT FFYNNON-WEN
SITE TYPE: Hut circle
FORM: O.Struct
CONDITION: Damaged
SUMMARY:

A possible prehistoric hut circle situated on a gentle north-west facing slope below Brest y rhos.

LONG DESCRIPTION:

Visited during the 2008 fieldwork. At the given NGR is a scooped out circular depression in the ground c.0.35m deep that approximates to the same dimensions as that given for the former hut circle. No stone is visible, but c.9.0m to the west by the stream is a heap of stone, both large and smaller boulders, which suggests that the the hut circle has been demolished and the stones pushed downhill. There are no other features in or around the given NGR, and infact the whole of this NW facing gentle slope has the appearance of having been cleared of stone. F Murphy & R Ramsey 2008

A hut-circle is situated at SN76412230, scooped into a gentle north-west facing pasture slope, 11m from a small stream. The hut has an internal diameter of 3.5m, and comprises a bank of loose stones, 1.5m to 2.0m in width, 0.3m high externally, 0.5m internally. An entrance, 2.0m wide, on the north-west side, facing the stream, has a portal stone on the east side, 0.7m by 0.4m and 0.5m high. (Ordnance Survey 1977)

PRN: 10,487 **NGR:** SN772190
SITE NAME: GARREG LAS
SITE TYPE: Enclosure
FORM: Earthwork
CONDITION: Substantially intact
SUMMARY:

A rectangular enclosure located at 570m above sea level on the steep southwest facing slopes of Godre'r Garreg Las.

LONG DESCRIPTION:

A rectangular enclosure of some 3 acres discovered in 1982. It is situated on the southwest facing slopes of Garreg Las at SN772190. Three sides of the enclosure consist of tumbled stone walls while uphill the fourth side is a natural scarp of millstone grit. A site visit was not undertaken in the 2008 project. F Murphy & R Ramsey 2008

PRN: 11,590 **NGR:** SN50323555
SITE NAME: MYNYDD LLANFIHANGEL RHOS Y CORN
SITE TYPE: Round barrow,Clearance cairn
FORM: Earthwork
CONDITION: Substantial destruction
SUMMARY:

Possible clearance cairn or round barrow located on Mynydd Llanfihangel rhos y corn.

LONG DESCRIPTION:

Site visit 02/06/08 - could not locate the site. F Murphy 2008

Low mound no more than 0.3m high. Small stones protrude through the turf. Longest and shortest diameters are 6.0m and 4.5m respectively. The constitution of the mound is quite unlike that of the surrounding peaty soil. E Morgan 1986

PRN: 11,591 **NGR:** SN50373563
SITE NAME: MYNYDD LLANFIHANGEL RHOS Y CORN
SITE TYPE: Bank (earthwork)
FORM: Earthwork
CONDITION: Substantial destruction
SUMMARY:

A nearly semi-circular bank.

LONG DESCRIPTION:

Site visit 02/06/08 - could not locate the site. F Murphy 2008

The site consists of a nearly semi-circular bank, 2m wide 0.5m high and 20m long (all measurements approximate). There is possibly a detached section of the enclosure to the south of semi-circular section, completing the circle. A path seems to have eroded large sections of the enclosure. E Morgan 1986

PRN: 13,013 **NGR:** SN682174
SITE NAME: BANWEN GWYTHWCH
SITE TYPE: Sheepfold, Enclosure
FORM: earthwork
CONDITION: Damaged
SUMMARY:

Enclosure - probably a sheepfold.

LONG DESCRIPTION:

A large stone-built sub-rectangular enclosure noted as a result of air survey in 1984. Examination from the ground showed it to be in a good state of preservation and being situated at one end of a narrow steep-sided gully, it seems likely to have been used as a sheepfold. Arch. in Wales Vol 27

PRN: 13,138 **NGR:** SN683163
SITE NAME: CWM BERACH
SITE TYPE: Hut circle
FORM: Stone built feature
CONDITION: Damaged
SUMMARY:

Oval single chambered building 3.2m x 2.6m near head of Berach valley. Walls 0.7m wide. Single entrance.

LONG DESCRIPTION:

Site visit 21/05/08 - could not locate the site at given grid reference. North of grid ref. was a spread of stone but with no real pattern to it. This was located on a southeast facing hillslope at 375m OD. F Murphy & R Ramsey 2008

PRN: 13,153 **NGR:** SN681176
SITE NAME: CWM GWYTHWCH
SITE TYPE: Hut circle
FORM: Stone built feature
CONDITION: Substantial destruction
SUMMARY:

Oval, single chambered building.

LONG DESCRIPTION:

Site visit 22/05/08 - Small oval stone built enclosure adjacent to Gwythwch stream. It is aligned north-south and measures 5.7m by 5.0m, walls 0.9m wide and 0.3-0.4m high, possible entrance at northern end. Quite a nice example of this type of site. F Murphy & R Ramsey 2008

PRN: 13,269 **NGR:** SN74331510
SITE NAME: CWM AMAN FACH
SITE TYPE: Hut circle, Building
FORM: Building
CONDITION: Substantial destruction
SUMMARY:

The site was located at the confluence of two streams on a narrow platform. It has been badly eroded by the two streams and now appears more like a vague spread of stone. F Murphy & R Ramsey 2008

LONG DESCRIPTION:

Oval single chambered building 4.7 x 3.8m on narrow platform just above Aman Fach stream. Walls are 0.9m wide. (EM 1988)

PRN: 13,401 **NGR:** SN76352061

SITE NAME: CWM SAWDDE FECHAN

SITE TYPE: Long house, Clearance cairn

FORM: Building

CONDITION: Damaged

SUMMARY:

A rectilinear structure/possibly partially cleared into a heap of stones, situated to the east of Cwm Sawdde Fechan.

LONG DESCRIPTION:

Visited during the 2008 fieldwork. The dimensions are as described and agree that it has the appearance of a former rectangular structure that has been partially cleared, particularly when considered in relation to the surrounding field system (PRN 13400, 32332). This is a duplication of PRN 32335. F Murphy & R Ramsey 2008

A rectilinear configuration of stones. A likely clearance cairn but possibly a long hut, although this is unlikely RSR March 1999.

Probably rectangular building 10.9m x 5.0m partially cleared into heap within PRN 13400 field system. Long axis perpendicular to contours. Later field system now disused. E Morgan 1988

PRN: 13,402 **NGR:** SN76372061

SITE NAME: CWM SAWDDE FECHAN

SITE TYPE: Clearance cairn

FORM: Building

CONDITION: Substantial destruction

SUMMARY:

Probable clearance cairn situated to the east of Cwm Sawdde Fechan.

LONG DESCRIPTION:

Visited during the 2008 fieldwork. Dimensions as previously described - probable clearance cairn. It is in close vicinity to possible longhouse (PRN 13401) and field system (PRN 13400). F Murphy & R Ramsey 2008

A stone spread, representing either a natural feature or a clearance cairn. There is a field system in the vicinity but no obvious settlement. RSR March 1999.

Probably clearance cairn or oval building 5.2m x 3.3m in similar situation to PRN 13401. Long axis parallel to contours. E Morgan 1988

PRN: 13,404 **NGR:** SN76402043

SITE NAME: CWM SAWDDE FECHAN

SITE TYPE: Enclosure

FORM: Earthwork

CONDITION: Damaged

SUMMARY:

Sub-circular enclosure situated to the east of Cwm Sawdde Fechan.

LONG DESCRIPTION:

Visited during the 2008 fieldwork - the dimensions of the sub-circular enclosure are as previously described in 1988. The enclosure appears terraced into the SE side of the slope, and has a slightly concave/scooped interior. The possible square building to the NW is vague - just an outline of stones protruding through the turf defines it. Two large stones are recumbent on the SE. Not clear as to date - location would suggest medieval or later. F Murphy & R Ramsey 2008

This site was not located. It is situated in an area of bracken albeit not very deep at the time of visit (July 1998). RSR March 1999.

Circular enclosure, diameter 8.2m on level area to E of river. Walls 0.9m wide. Adjacent to its NW side is sub-square(?) building of side 4.3m. Walls 0.75m wide. E Morgan 1988

PRN: 13,405 **NGR:** SN76422039
SITE NAME: CWM SAWDDE FECHAN
SITE TYPE: Enclosure
FORM: Earthwork
CONDITION: Damaged
SUMMARY:

Sub-rectangular enclosure situated to the east of Cwm Sawdde Fechan.

LONG DESCRIPTION:

Visited during the 2008 fieldwork - dimensions approximate more to the 1988 description, but no entrance clearly visible on the N side. The whole enclosure is situated on a platform created by terracing into the west facing slope. It is clear there are separate structures/buildings, one on the E side, another to the SW corner, but they do appear to lie within the large (c.15m by 12m) rectangular enclosure, rather than outside of it. However, the spread of stone across the whole site makes it very difficult to clearly define the site. A small stream runs through the enclosure, along its south side. F Murphy & R Ramsey 2008

This unusual site is aligned ESE-WNW. At the ESE end there is a sub-circular yard or enclosure which is cut into the slope and measures 10m x 4m, the long axis being orientated ESE-WNW. The diameter of the yard is about 6m. At the WNW end is a small 4m square rectilinear hut or shelter. The structure is defined by a low stone wall base and is set in rough pasture with some reed growth present. The site, which comprises probably both a shelter and a fold, faces the Afon Sawdde to the west and is on a natural spur. RSR March 1999

Sub-rectangular enclosure, 15.5m x 11.6m, on gentle slope east of river. Long axis perpendicular to contours. Orientated E-W, walls up to 2.4m wide. At least 1 entrance on north side. Rectangular building, 3.1m x 2.4m inside east half of enclosure on perpendicular alignment. Walls of this building are 0.6m wide. Possible building in SW corner of enclosure. Poorly preserved. E Morgan 1988

PRN: 13,417 **NGR:** SN75322068
SITE NAME: NANT CEULAN
SITE TYPE: Long house
FORM: Building
CONDITION: Damaged
SUMMARY:

A rectangular enclosure located on the west bank of the Afon Ceulan part of settlement complex PRN 32315.

LONG DESCRIPTION:

Visited during the 2008 fieldwork - found to be as previously described in 1986 & 1988. It is not part of or connected with PRN 13418 which is a completely separate feature - have no explanation why they thought so in 2003. F Murphy & R Ramsey 2008

It was reassessed in 2003, and linked with PRN 13418, as a single longhouse, described thus; "This is a two celled longhouse, with a third cell added to the north end. The overall measurements for the longhouse are 8m N-S x 5m, with drystone wall bases up to 1m thick and up to 0.3m high. There is a fall of c.0.3m from the south cell to the north cell. Built of often large stone blocks, with the south end surviving best. The structure is largely obscured by reeds. NGR amended from SN75322068. PR 2003 based on RPS 2003

Rectangular building, c.7.5m x 4.3m. Walls are 0.75m wide. Possibly partitioned in half by a crosswall. E Morgan 1988

Some 30m downstream (from PRN 32316), on the W bank are the remains of a rectangular structure, built up on a platform above the stream. The structure measures about 7.0m N-S by 4.0m overall and is bounded by boulder walls 0.8m thick and up to 0.3m high. There is a suggestion of internal divisioning. From the NW corner, a wall of similar character running N then E to the stream defines a yard measuring approx. 7.0m N-S by 8.0m internally. It is separated from the stream by a small natural hillock. (RCAHMS 1986 Meithrin Mynydd Project)

PRN: 13,436 **NGR:** SN74592071

SITE NAME: TRUMAN

SITE TYPE: Shelter

FORM: Building

CONDITION: Substantial destruction

SUMMARY:

Single chambered sub-rectangular building 4.4m x 4.2m in a similar situation to PRN 13435. Walls are 0.8m wide.

LONG DESCRIPTION:

PRN: 13,440 **NGR:** SN74391490

SITE NAME: CWM AMAN

SITE TYPE: Enclosure

FORM: Earthwork

CONDITION: Substantial destruction

SUMMARY:

Possible remains of a rectilinear enclosure.

LONG DESCRIPTION:

Site located and as previously described, although grid reference needs correcting to SN74391490. F Murphy & R Ramsey 2008

L-shaped stone wall 8.5m x 4.8m and 0.9m wide in section on level area in shelter of valley. Possible remains of rectilinear enclosure. E Morgan 1988

PRN: 13,441 **NGR:** SN74381499

SITE NAME: CWM AMAN

SITE TYPE: Hut circle

FORM: Building

CONDITION: Substantial destruction

SUMMARY:

Possible remains of a circular building/enclosure.

LONG DESCRIPTION:

Site located and as previously described. F Murphy & R Ramsey

Possible remains of circular building consisting of rubble spread of diameter 4.2m on wide shelf above river but within shelter of valley. E Morgan 1988

PRN: 13,443 **NGR:** SN74341516

SITE NAME: CWM AMAN FACH

SITE TYPE: Hut circle

FORM: Building

CONDITION: Damaged

SUMMARY:

Possible hut circle.

LONG DESCRIPTION:

Site located and as previously described. The walls are 0.6-0.7m high internally. F Murphy & R Ramsey 2008

Group of 2 (possibly 3) buildings situated on narrow platforms above Aman Fach stream.

- a) Circular single chambered building of diameter 3.1m. Walls 0.8m wide. Single entrance. PRN 13443. b) Possible oval building 3.1m x 2.5m 13.0m & 3' from above. Walls 0.8m wide. PRN 13444. c) Single chambered D-shaped building 5.6m x 4.7m 9.3m from PRN 13443. Walls are 1.1m wide. PRN 13445. E Morgan 1988

PRN: 13,444 **NGR:** SN74341518

SITE NAME: CWM AMAN FACH

SITE TYPE: Hut circle

FORM: Building

CONDITION: Substantial destruction

SUMMARY:

Possible oval building - hut circle?

LONG DESCRIPTION:

Site located and as previously described. F Murphy & R Ramsey 2008

SN 74341515: Group of 2 (possibly 3) buildings situated on narrow platforms above Aman Fach stream. a) Circular single chambered building of diameter 3.1m. Walls 0.8m wide. Single entrance. PRN 13443. b) Possible oval building 3.1m x 2.5m 13.0m & 3' from above. Walls 0.8m wide. PRN 13444. c) Single chambered D-shaped building 5.6m x 4.7m 9.3m from PRN 13443. Walls are 1.1m wide. PRN 13445.

PRN: 13,445 **NGR:** SN74341515

SITE NAME: CWM AMAN FACH

SITE TYPE: Hut circle, Building

FORM: Building

CONDITION: Damaged

SUMMARY:

Possible building or hut circle.

LONG DESCRIPTION:

Site located and much as previously described, apart from there is a 1m gap or entrance on the southeast. F Murphy & R Ramsey 2008

A single chambered D-shaped building 5.6m x 4.7m. It is approximately 9.3m from PRN 13443. E Morgan 1998

PRN: 13,449 **NGR:** SN74771554

SITE NAME: CWM AMAN

SITE TYPE: Cairn

FORM: Stone built feature

CONDITION: Substantially intact

SUMMARY:

Oval cairn of modern appearance, situated on exposed moorland between the valleys of the Aman Fach and Aman Fawr.

LONG DESCRIPTION:

Visited during 2008 - as previously described - of modern appearance. F Murphy & R Ramsey 2008

Oval cairn of modern appearance 2.9m x 2.2m & 1.4m high on gentle scree-littered slope between Aman Fawr & Fach valleys. E Morgan 1988

A cairn and remains of a single-celled building (PRN 13450) lie at 325m above sea level on exposed S-facing moorland between the valleys of the Aman Fach and the Aman Fawr. The cairn measures 2.9m in diameter, stands to 1.2m high and is composed of loose, rounded stones between 0.2m and 0.7m in size. A drystone wall projects from the cairn 3.2m to the E; it measures 0.7m wide x 0.7m high and is faced on its N side. (RCAHMW 1986 Meithrin Mynydd Project)

PRN: 13,450 **NGR:** SN74761554

SITE NAME: CWM AMAN

SITE TYPE: Shooting hide, Sheepfold, Hut circle

FORM: Stone built structure

CONDITION: Damaged

SUMMARY:

Remains of an oval building - probable sheep shelter, situated on exposed south-facing moorland between the valleys of the Aman Fach and Aman Fawr.

LONG DESCRIPTION:

Site located - it is close to marker cairn PRN 13449. As previous description. Probably a post med sheepfold. F Murphy & R Ramsey 2008

Single chambered oval building 4.8m x 4.1m 7.5m W of above. Orientated E-W. Single entrance to E walls are 0.8m wide. E Morgan 1988

Approximately 10m to the W (of PRN 13449) are remains of an oval building measuring 5m E-W by 4m overall. The walls are of loose rubble and measure 0.8m-1.2m thick and stand to a maximum height of 0.9m with an entrance gap facing the cairn at the E end. The surrounding area is covered in scree and boulder clitter except for the rising ground to the N which is boggy. The site is probably an old sheep shelter with a marking cairn and may still be used as such. (RCAHMW 1986 Meithrin Mynydd Project)

PRN: 13,458 **NGR:** SN75801625

SITE NAME: CWM LLYNFELL

SITE TYPE: Sheepfold

FORM: Building

CONDITION: Damaged

SUMMARY:

Originally (in 1988) identified as two buildings and given two PRNs (13458 & 13459) this appears to be one sub-rectangular feature with internal divisions (F Murphy & R Ramsey 2008)

LONG DESCRIPTION:

Originally (in 1988) identified as two buildings and given two PRNs (13458 & 13459) this appears to be one sub-rectangular feature with internal divisions - much as described in 2003. Located on the west bank of the Nant Llynfell at 380m above sea level, with walls c.0.5m high, it has the appearance of a sheepfold complex. F Murphy & R Ramsey 2008

A possible sheepfold complex which includes at least 4 cells, up to 5m x 5m in size. Three of these are rectilinear, one is sub-circular. Sited on the edge of a flat terrace, intervisible with long huts (PRN 31770 and 31771). Built at the edge of a natural scatter of gritstone blocks. PR 2003 based on RPS 2003 Two buildings linked by short wall at base of slope close to stream. One is oval 5.8 x 4.8m with walls 1m wide. Single entrance along longest axis. The other is subrectangular 4.7 x 3.8. Walls 0.8m wide. Single entrance. PRN 13458-9. E Morgan Dec 88.

PRN: 13,460 **NGR:** SN75811626

SITE NAME: CWM LLYNFELL

SITE TYPE: Hut circle, Building

FORM: Building

CONDITION: Substantial destruction

SUMMARY:

The remains of a small oval building or enclosure.

LONG DESCRIPTION:

The site was located during 2008 project, much as previously described although the walls are very low and spread. It lies very close to the Nant Llynfell stream and may be associated with the sheepfold complex PRN 13458/9. F Murphy & R Ramsey 2008

Oval building 5m x 4m just north of PRNs 13458/9. Walls are 0.9m wide. EM Dec 88.

PRN: 13,462 **NGR:** SN75801620

SITE NAME: CWM LLYNFELL

SITE TYPE: Hut circle, Building

FORM: Building

CONDITION: Substantial destruction

SUMMARY:

Small circular enclosure or building located on the eastern bank of Nant Llynfell.

LONG DESCRIPTION:

Site located during 2008 - as previously described. It is situated on an area of slightly higher ground. The circle is defined by large stones that protrude through the turf, not a bank. The line of stones is not continuous. F Murphy & R Ramsey 2008.

Circular building of diameter 5.5m close to PRNs 13458-60, but on the opposite bank of the Nant Llynfell. Walls are 0.9m wide. EM Dec 88.

PRN: 13,464 **NGR:** SN75801608

SITE NAME: CWM LLYNFELL

SITE TYPE: Hut circle, Building

FORM: Building

CONDITION: Substantial destruction

SUMMARY:

2 celled stone built structure or 2 adjacent circular buildings situated on the eastern bank of the Nant Llynfell, associated with other stone built features.

LONG DESCRIPTION:

Site located in 2008 project. As previously described. The rubble stone walls are approximately 0.4m high. It is possibly one structure with an internal division, creating a 2 celled building, rather than 2 separate but joined circular features. F Murphy & R Ramsey 2008

2 conjoined circular buildings 8.5m x 4.5m aligned N-S on level ground to E of stream. Walls are 0.9m wide. EM Dec '88

PRN: 13,465 **NGR:** SN75821604

SITE NAME: CWM LLYNFELL

SITE TYPE: Hut circle, Building

FORM: Building

CONDITION: Substantial destruction

SUMMARY:

A circular rubble stone built feature that lies adjacent to another more oval stone feature (PRN 13466) located on the eastern bank of the Nant Llynfell, associated with other nearby stone built structures.

LONG DESCRIPTION:

Site located in 2008 project. Much as previously described. The walls are constructed from stone rubble that is now quite spread. Difficult to ascertain whether these two PRNs (13465 & 13466) are 2 separate features or just one 2 celled feature. F Murphy & R Ramsey 2008

2 adjacent buildings on level ground at base of S-facing slope to E of stream. Circular building (PRN 13465) to W 5.6m in diameter & walls 1.0m wide. Other (PRN 13466) is oval 4.8 x 4.0m. Walls are 0.9m wide. EM Dec '88.

PRN: 13,466 **NGR:** SN75821604

SITE NAME: CWM LLYNFELL

SITE TYPE: Hut circle, Building

FORM: Building

CONDITION: Substantial destruction

SUMMARY:

An oval rubble stone built feature that lies adjacent to another more circular stone feature (PRN 13465) located on the eastern bank of the Nant Llynfell, associated with other nearby stone built structures.

LONG DESCRIPTION:

Site located in 2008 project. Much as previously described. The walls are constructed from stone rubble that is now quite spread. Difficult to ascertain whether these two PRNs (13465 and 13466) are 2 separate features or just one 2 celled feature. F Murphy & R Ramsey 2008

2 adjacent buildings on level ground at base of S-facing slope to E of stream. Circular building (PRN 13465) to W 5.6m in diameter & walls 1.0m wide. Other (PRN 13466) is oval 4.8 x 4.0m. Walls are 0.9m wide. EM Dec '88.

PRN: 13,469 **NGR:** SN75681475

SITE NAME: CWM LLYNFELL

SITE TYPE: Enclosure

FORM: Earthwork

CONDITION: Substantial destruction

SUMMARY:

An oval enclosure located on the south facing slopes of Waun y Ddraenen.

LONG DESCRIPTION:

Site located during 2008 project. Much as previously described. A slight rise in the ground associated with a larger number of stones protruding through the turf defines the oval shape of the enclosure. There is no obvious entrance. F Murphy & R Ramsey 2008

Oval enclosure 25.3m x 20.2m on a gentle slope to W of valley. EM Dec '88.

PRN: 13,472 **NGR:** SN75681472

SITE NAME: CWM LLYNFELL

SITE TYPE: Long hut

FORM: Building

CONDITION: Damaged

SUMMARY:

Rectangular building located on the south facing slopes of Waun y Ddraenen, west of the Nant Llynfell.

LONG DESCRIPTION:

Site located during the 2008 project. Much as previously described - appears related to PRN 13473. F Murphy & R Ramsey 2008

Obscured by thick reed growth at time of October 2003 visit. PRN 13473 lies 10m to the SW. PR 2003 based on RPS 2003

Rectangular building 10.1m x 5.1m on narrow platform to west Nant Llynfell valley. Long axis parallel to contours. Partitioned by a cross-wall 1.2m wide in ratio of 3:2. Walls are 0.8m wide. EM Dec 88.

PRN: 13,473 **NGR:** SN75701471

SITE NAME: CWM LLYNFELL

SITE TYPE: Enclosure

FORM: Building

CONDITION: Damaged

SUMMARY:

Small enclosure? located on the south facing slopes of Waun y Ddraenen, on the western bank of the Nant Llynfell.

LONG DESCRIPTION:

An oval shaped hollow area on western bank of Nant Llynfell, that is bounded on the side facing the stream by a well constructed rubble stone wall. The ground to the east of the wall falls steeply down to the river. On the western edge of the hollow is rectangular enclosure PRN 13472, and it would appear that the two features are related. Could this hollow area have formed a small enclosure/animal pen? F Murphy & R Ramsey 2008

Small enclosure situated on platform to E of PRN 13472 above steep slope down to stream. EM Dec 88.

PRN: 13,526 **NGR:** SN73861505

SITE NAME: FOEL DEG

SITE TYPE: Shooting stand,Hut circle

FORM: Building

CONDITION: Damaged

SUMMARY:

Small circular building located on the southwest facing slopes of Foel Deg, at 290m above sea level.

LONG DESCRIPTION:

Site located in 2008 project. As previously described - site in good condition. Simple entrance on the east. As described there is a clearance cairn to the west. Post Medieval shooting stand? Too small for a hut circle? F Murphy & R Ramsey 2008

Single chambered circular building 2.7m in diameter occupying shallow depression in similar location to PRN 13525. Walls are 0.4m wide and up to 0.7m high. Cairn 2.1m x 0.9m and 0.5m high of modern appearance to W. E Morgan 1989

PRN: 13,527 **NGR:** SN73881504

SITE NAME: FOEL DEG

SITE TYPE: Shooting stand,Hut circle

FORM: Building

CONDITION: Damaged

SUMMARY:

The remains of an oval stone building located on the southwest facing slope of Foel Deg, at 290m above sea level.

LONG DESCRIPTION:

Site located during 2008 project. As previously described. No obvious entrance. Possible hut circle? F Murphy & R Ramsey 2008

Oval building 3.8m x 3.0m situated within gently sloping scree-littered area. Walls 0.65m wide and up to 0.8m high. Interior stony and irregular. E Morgan 2008

PRN: 13,530 **NGR:** SN74081535

SITE NAME: FOEL DEG

SITE TYPE: Shooting stand,Hut circle

FORM: Building

CONDITION: Substantial destruction

SUMMARY:

Remains of an oval building situated towards the high point of Foel Deg at 320m above sea level.

LONG DESCRIPTION:

Site located during 2008 project. More sub-rectangular in shape than oval whose long axis is aligned SE-NW. Measurements as previously described. F Murphy & R Ramsey 2008

Oval building 4.0m x 2.9m situated on gently sloping scree-littered shelf on NE slopes of hill. Crude walls 0.5m wide and up to 0.5m high. E Morgan 1989

PRN: 13,532 **NGR:** SN740150

SITE NAME: FOEL DEG

SITE TYPE: Field system,Clearance cairn

FORM: Earthwork

CONDITION: Substantial destruction

SUMMARY:

A group of clearance cairns and lengths of stone walling located below Foel Deg.

LONG DESCRIPTION:

Visited during 2008 fieldwork. Much as previously described. The linear walls are visible, and the area has the appearance of being more a prehistoric cleared landscape than a medieval one. The largest cairn (measurements as described in 1989) is at NGR SN74011507, and its long axis is orientated NE-SW. F Murphy & R Ramsey 2008

Remains of walls and at least 9 cairns on S facing well drained, gently sloping shelf below Foel Deg. Majority of cairns, of mean diameter 3.75 plus or minus 1.1m, are located on N edge of area at the foot of steep slope above. Exception being oval cairn 7.9m x 5.6m and 0.3m high on E limits. (E Morgan 1989)

PRN: 13,578 **NGR:** SN71851553

SITE NAME: CRAIG DERLWYN

SITE TYPE: Stock enclosure

FORM: Earthwork

CONDITION: Damaged

SUMMARY:

Large rectilinear enclosure situated on the southwest facing slope of Craig Derlwyn at 290m above sea level.

LONG DESCRIPTION:

Site located during 2008 project. Much as previously described. Quite a large embanked enclosure whose turfed stony banks are very spread. A track passes through the site from north to south. Could it have been a stock enclosure? F Murphy & R Ramsey 2008

Rectilinear enclosure 45.5m x 40.2m situated on steep slope SW. of Craig Derlwyn. Walls are 1.3m wide and up to 0.3m high. DE.Morgan 1989.

PRN: 14,135 **NGR:** SN79652595

SITE NAME: CWM NANT DUNANT

SITE TYPE: Wall

FORM: O.Struct

CONDITION: Unknown

SUMMARY:

A "C-shaped" length of wall situated on the east bank of Afon Dunant.

LONG DESCRIPTION:

Visited during the 2008 fieldwork - as previously described but more of an earthen bank with some stones protruding than a wall. The shape and dimensions are correct. F Murphy & R Ramsey 2008

Disused enclosure on the parish common land. RPS Dec.2002 A "C-shaped" length of wall, 25m long, 1.9m wide and up to 0.4m high, enclosing an approximately circular area of diameter 8m, above stream. Sloping interior without trace of any building. E Morgan 1988-9

PRN: 14,136 **NGR:** SN79672594

SITE NAME: CWM NANT DUNANT

SITE TYPE: Shelter,Hut circle

FORM: Earthwork

CONDITION: Damaged

SUMMARY:

Possible remains of a hut circle situated on a north facing slope close to the Afon Dunant.

LONG DESCRIPTION:

Visited during the 2008 fieldwork - location correct but found to more horseshoe shaped than circular. It has a concave interior as if slightly terraced into the slope and an opening facing NW, c.1.2m wide. F Murphy & R Ramsey 2008

Hut circle, diameter 5.6m situated on N facing slope close to stream (Afon Dunant). Walls are 1.3m wide and up to 0.3m high. E Morgan 1988-9

PRN: 14,137 **NGR:** SN79662594

SITE NAME: CWM NANT DUNANT

SITE TYPE: Shelter,Hut circle

FORM: Earthwork

CONDITION: Damaged

SUMMARY:

Possible remains of a hut circle situated on a north facing slope close to the Afon Dunant.

LONG DESCRIPTION:

Visited during the 2008 fieldwork - dimensions as previously described but more of a horseshoe shaped scoop in the ground, and not as distinct a feature as PRN 14136. It appears to be slightly terraced into the slope and has an opening on the NW, c.1.0m wide. F Murphy & R Ramsey 2008

Possible hut circle, of diameter 5.2m, in similar location to PRN 14136. Walls are 1.2m wide and up to 0.2m high. E Morgan 1988-9

PRN: 14,148 **NGR:** SN80152705

SITE NAME: CWM CLYDACH

SITE TYPE: Shelter,Hut circle
FORM: Earthwork
CONDITION: Substantial damage
SUMMARY:

The possible remains of a hut circle situated on a steep sided promontory overlooking the Afon Clydach to the east and south.

LONG DESCRIPTION:

Visited during 2008 - much as previously described. It is a sub-circular depression/scoop in the ground, c.5m by 4.5m, nicely defined, with a few stones protruding through the turf but no evidence remaining of a wall or bank. It sits on a knoll overlooking the Afon Clydach to the E and S. F Murphy & R Ramsey 2008

Platform, located on a prominent knoll overlooking the Afon Clydach, 5m in diameter. Possibly a rectilinear feature which has become circular through erosion. RPS July 2001. Possible hut circle site consisting of an oval depression/platform, 5.0m x 4.5m, situated on steep-sided promontory, surrounded by river meander (Afon Clydach). DE.Morgan 1989.

PRN: 14,150 **NGR:** SN79792748

SITE NAME: CWM CLYDACH
SITE TYPE: Enclosure
FORM: Building
CONDITION: Unknown
SUMMARY:

A rectangular enclosure, situated on a platform at the foot of a very steep slope, close to the Afon Clydach.

LONG DESCRIPTION:

Visited during the 2008 fieldwork - dimensions as previously described. It is situated on a level platform terraced into the NE-facing slope, approximately 15m distance from the river to the SW. The long axis of the structure is aligned NE-SW. The stone wall that defines the rectangle survives well on the N to a maximum height of c.0.75m, elsewhere the wall is much lower, but it is still clearly visible. There is an entrance at the SW corner, and the internal area is stone free. F Murphy & R Ramsey 2008

Rectangular enclosure 13.0m x 10.2m, situated on platform at foot of very steep slope, close to river (Afon Clydach) DE.Morgan 1989.

PRN: 27,655 **NGR:** SN57431585

SITE NAME: BANC-YR-ODYN
SITE TYPE: Lime kiln
FORM: Earthwork
CONDITION: Substantially intact
SUMMARY:

Not recorded on 1st edition 1:2500 of 1887. Survives as a pennanular earth and stone bank enclosing a pot diameter 3.4m 2.0m deep which shows traces of stone lining. Drawing hole faces east with spoil in same direction. P.Sambrook 1994.

LONG DESCRIPTION:

PRN: 27,666 **NGR:** SN57171549

SITE NAME: BANC Y LLYN

SITE TYPE: Field boundary

FORM: Earthwork

CONDITION: Damaged

SUMMARY:

A possible short length of boundary bank, one end of which terminates at an earthen mound (PRN 27665). Located within Llyn Llech Owain Country Park.

LONG DESCRIPTION:

Site visit 02/06/08. Difficult to ascertain where this feature was. What might be an approx. linear spread of stone blends into PRN 27665. Not sure if this is an antiquity. F Murphy 2008

Short length of boundary bank which disappears into forest. Seems to terminate at earth mound PRN 27665. Not marked on any map. Possibly non-post med. P.Sambrook, 1994.

PRN: 27,667 **NGR:** SN5684615284

SITE NAME: BANC Y LLYN

SITE TYPE: Mound

FORM: Earthwork

CONDITION: Near Destroyed

SUMMARY:

A prominent mound of large stones protruding through the grass and heather. Located within Llyn Llech Owain Country Park.

LONG DESCRIPTION:

Site visit 02/06/08. As previously described - not sure this is an antiquity. F Murphy 2008

Prominent mound, large stones protrude through grass and heather. Mound 1.5m high x 9.0m in diameter. Possibly a natural feature. P.Sambrook, 1994.

PRN: 27,668 **NGR:** SN56781524

SITE NAME: BANC Y LLYN

SITE TYPE: Unknown

FORM: Earthwork

CONDITION: Damaged

SUMMARY:

Earth mound- possibly quarry spoil. Located within Llyn Llech Owain Country Park.

LONG DESCRIPTION:

Site visit 02/06/08. This particular earth mound could not be distinguished from all the other mounds, in an area of many small mounds, piles of stones and what appears to be the by-products of quarrying and/or clearance. F Murphy 2008

Earth mound, 9.0m north-east to south-west x 2.0m. Possibly quarry spoil. P.Sambrook 1994.

PRN: 27,669 **NGR:** SN56751524

SITE NAME: BANC Y LLYN

SITE TYPE: Spoil heap, Hut platform

FORM: Earthwork

CONDITION: Not known

SUMMARY:

Possible hut platform or more probably a result of quarrying . Located within Llyn Llech Owain Country Park.

LONG DESCRIPTION:

Site visit 02/06/08. Could not determine where this feature was as the vegetation was so dense at time of site visit. F Murphy 2008

Scoop in hillslope with spoil pushed downslope to create a large, circular platform, diameter 11.0m, facing north-west. Could be quarrying feature or a hut platform. P.Sambrook, 1994

PRN: 27,671 **NGR:** SN56711520
SITE NAME: BANC Y LLYN
SITE TYPE: Spoil heap,Hut platform
FORM: Earthwork
CONDITION: Not known
SUMMARY:

Circular platform/quarry spoil? Located within Llyn Llech Owain Country Park.

LONG DESCRIPTION:

Site visit 02/06/08. No evidence of this feature at the given grid reference. F Murphy 2008

Scoop into hillside, cut up to 2.0m deep, with spoil pushed downslope to create a circular platform. Diameter 6.0m, facing north-west. P.Sambrook, 1994.

PRN: 30,361 **NGR:** SN71734435
SITE NAME: BANC Y DDAU FRYN
SITE TYPE: Settlement
FORM: Earthwork
CONDITION: Substantial damage
SUMMARY:

Situated on the southwest-facing slope of Banc y Ddau Fryn at 410m above sea level, is a curving bank associated with two small possible "roundhouses".

LONG DESCRIPTION:

Visited during 2008 - the site was found to be much as previously described in 1995, although the bank does not continue curving around to the E and W past either "roundhouse" as described. Between the two "roundhouses" the bank is not continuous, but the area is so overgrown with billberries it is hard to judge whether it is there or not. The two roundhouses or hut circles are very small for this type of feature, but they are clearly visible. F Murphy & R Ramsey 2008

On ground falling to the south. Area supports grass and heather. The feature consists of a semi-circular segment of bank of wall 26m diameter facing south (downslope) embedded in which are two 'roundhouses': the circuit is apparently not completed on the north. (There is a rocky scarp on the north. The bank does not appear to form this). Part of the downslope length of the bank is not well defined either: this may represent an entrance. The bank is completely overgrown. It measures some 2m across and 0.4m high. By analogy with the 'roundhouses' it probably represents a wall. The 'roundhouses' are oval/polygonal. To the south stretches of walling survive. Elsewhere the features are obscured by heather and cut by sheep tracks and are not well defined (the outline shown on plan is idealized: damage is not shown). The eastern roundhouse' measures 2.5m x 1.5m internally. The western is larger measuring 3.5m x 2.0m internally. The surviving walling in the eastern 'roundhouse' varies from 0.5m to 1.1m wide and survives to 0.2m high: that in the western is 1m wide and survives to 0.3m high. The segment of surviving walling is straight but that in the eastern is polygonal confirming the oval/polygonal shape of the structures. It is possibly that the southern walls facing the approach to the settlement were always the most substantial. There are no clear entrances distinct from sheep tracks. GW. 1995.

PRN: 31,705 **NGR:** SN67131761
SITE NAME: GARREG LAS
SITE TYPE: Hut circle
FORM: Earthwork
CONDITION: Damaged
SUMMARY:

Possible hut circle.

LONG DESCRIPTION:

Site visit 22/05/08 - a vague circular bank up to 2m wide and 0.3m high measuring 6m in overall diameter. The interior is slightly platformed. Located very close to hut circle PRN 4000. F Murphy & R Ramsey 2008

PRN: 31,709 **NGR:** SN68021796
SITE NAME: GARREG LAS
SITE TYPE: Settlement
FORM: Stone built feature
CONDITION: Damaged
SUMMARY:
Possible prehistoric settlement that includes at least two hut circles (PRN31710 & 31711).
LONG DESCRIPTION:

PRN: 31,710 **NGR:** SN68031798
SITE NAME: GARREG LAS
SITE TYPE: Hut circle
FORM: Earthwork
CONDITION: Damaged
SUMMARY:
A possible prehistoric hut circle.

LONG DESCRIPTION:
Site visit 22/05/08 - A possible hut circle that lies on level ground at the base of a steep slope. It measures 7m east-west by 9m overall and consists of a turf covered rubble wall 0.3m high, spread to 1.5m wide. There is a possible entrance gap of 1.5m on the west side, and another smaller gap on the southeast side. F Murphy & R Ramsey 2008

PRN: 31,711 **NGR:** SN67991795
SITE NAME: GARREG LAS
SITE TYPE: Hut circle
FORM: Earthwork
CONDITION: Damaged
SUMMARY:
A possible prehistoric hut circle.

LONG DESCRIPTION:
A possible hut circle that lies 45m to the southwest of hut circle PRN31710. It measures 9m north-south and approx. 6.5m east-west. Its turf and heather covered bank is 0.5m high and spread to 1.8m wide. No entrance gap is visible but on the whole of the north side there is an absence of stone, and the entrance may have been here. The whole feature has the appearance of being a slightly raised level platform built into the slope of the hill. F Murphy & R Ramsey 2008

PRN: 31,712 **NGR:** SN68231762
SITE NAME: CWM GWYTHWCH
SITE TYPE: Hut circle
FORM: Stone built feature
CONDITION:
SUMMARY:
Enclosure - oval.
LONG DESCRIPTION:
This is probably a duplication of PRN 13153.

PRN: 31,725 **NGR:** SN68171809
SITE NAME: GARREG LAS
SITE TYPE: Field boundary
FORM: Earthwork
CONDITION: Damaged
SUMMARY:
Two lengths of bank, aligned roughly at right angles to each other.

LONG DESCRIPTION:
Site visit 22/05/08 - To the north of a disused quarry are two lengths of bank aligned roughly at right angles to each other. They are probably the remains of a field system. The banks are composed of turfed-over rubble up to 3m wide and 0.3m wide and 0.3m high. The first, follows an east-west path across a north facing slope for 80m. It terminates at its west end in a circular stone banked feature cut into the slope on the south and built out on the north to 0.5m high. It measures 3m in diameter. The second bank is 84m long and runs northwest-southeast. Two hut circles (PRN31710 & 31711) lie about 200m to the southwest. No evidence for an entrance. F Murphy & R Ramsey 2008

PRN: 31,746 **NGR:** SN69241513
SITE NAME: DRYSGOL
SITE TYPE: Bank
FORM: stone built feature
CONDITION: Damaged
SUMMARY:

A length of field boundary - part of settlement complex PRN 31732.

LONG DESCRIPTION:

Site visit 21/05/08 - a length of bank running east-west for about 22m but curving sharply south at either end. Midway along it is an entrance gap about 1.5m wide marked at each side by a boulder. Not sure what its purpose or date is. F Murphy & R Ramsey 2008 First recorded by the RCAHMW Meithrin Mynydd Survey in 1986.

PRN: 31,747 **NGR:** SN69251510
SITE NAME: DRYSGOL
SITE TYPE: Hut circle,Enclosure
FORM: Earthwork
CONDITION: Damaged
SUMMARY:

Probable hut circle - part of settlement complex PRN 31732.

LONG DESCRIPTION:

Site visit 21/05/08 - a small circular enclosure - probably a hut circle - measuring about 5m across with an entrance gap on the south. The hut circle lies at one end of a curving length of bank. The curving stone and earth bank is c.1.8m wide and c.0.3m high and does appear connected to the hut circle. F Murphy & R Ramsey 2008 First recorded by the RCAHMW Meithrin Mynydd Survey in 1986.

PRN: 31,750 **NGR:** SN68981496
SITE NAME: DRYSGOL
SITE TYPE: Hut circle,Enclosure
FORM: Earthwork
CONDITION: Damaged
SUMMARY:

An oval enclosure -part of settlement complex PRN 31732.

LONG DESCRIPTION:

Site visit 21/05/08 - oval enclosure measuring 6m northwest-southeast by 4.5m, bounded by a bank up to 1.5m wide and 0.5m high. It lies astride a field bank. F Murphy & R Ramsey 2008 First recorded by the RCAHMW Meithrin Mynydd Survey in 1986.

PRN: 31,752 **NGR:** SN69101503
SITE NAME: DRYSGOL
SITE TYPE: Hut circle,Enclosure
FORM: Earthwork
CONDITION: Damaged
SUMMARY:

An oval enclosure.

LONG DESCRIPTION:

Site visit 21/05/08 - An oval enclosure measuring 6m northeast-southwest by 5m, defined by a bank 1.5m wide and 0.3m high. It appears to lie astride a field bank. A substantial feature with a possible entrance on the north, it appears to be terraced into the northwest facing slope. F Murphy & R Ramsey 2008

PRN: 31,753 **NGR:** SN69111499
SITE NAME: DRYSGOL
SITE TYPE: Hut circle,Enclosure
FORM: Earthwork
CONDITION: Damaged
SUMMARY:

Small circular enclosure.

LONG DESCRIPTION:

Site visit 21/05/08 - could not locate the site at given grid reference. It has been described as a circular enclosure, 4m in diameter bounded by a bank 1m wide and 0.2m high, with an entrance gap on the north, some 1.5m wide. Vague banks are said to run northwest and northeast from it.
F Murphy & R Ramsey 2008

PRN: 31,759 **NGR:** SN69671598
SITE NAME: CWM PEDOL
SITE TYPE: Hut circle
FORM: Earthwork
CONDITION: Damaged
SUMMARY:

A possible hut circle that lies on a fairly steep but marshy southeast facing slope to the northwest of Nant Pedol, at about 250m above sea level.

LONG DESCRIPTION:

Site visit 21/05/08 - A possible hut circle that lies on a fairly steep but marshy southeast facing slope to the northwest of Nant Pedol, at about 250m above sea level. The remains, heavily overgrown with bracken, take the form of a circular bank measuring about 4.5m in diameter. Boulder walls about 0.3m high define the circle which is slightly platformed into the hillside. The stone circle is surrounded by wet and boggy ground, but internally it is much drier and there do appear to be vestiges of an outer drainage? ditch. It has good views down the Nant Pedol valley to the northwest. Slight indication of an internal partition visible as a spread of stone. F Murphy & R Ramsey 2008

PRN: 31,761 **NGR:** SN69851542
SITE NAME: PANTYFFYNNON
SITE TYPE: Enclosures
FORM: Earthwork
CONDITION: Damaged
SUMMARY:

A group of enclosures located on the west facing slopes of Foel Deg-arbedol.

LONG DESCRIPTION:

An overall PRN for a group of Post Medieval enclosures situated on the west facing slopes of Foel Deg-arbedol.

PRN: 31,762 **NGR:** SN69851542
SITE NAME: PANTYFFYNNON
SITE TYPE: Enclosure
FORM: Earthwork
CONDITION: Damaged
SUMMARY:

A rectangular enclosure.

LONG DESCRIPTION:

Site visit 21/05/08 - a substantial, well preserved rectangular enclosure that measures approx. 17m east-west and 18m north-south. It lies on a steep west facing slope that drops to the Nant Pedol to the west of PRN31763. The turf-consolidated limestone rubble walls are c.1.0m wide and c.0.5m high. There is no obvious entrance and the interior is stone free. Probably Post Medieval in date. F Murphy & R Ramsey 2008

PRN: 31,763

NGR: SN69861542

SITE NAME: PANTYFFYNNON

SITE TYPE: Enclosure

FORM: Earthwork

CONDITION: Damaged

SUMMARY:

A rectangular enclosure.

LONG DESCRIPTION:

Site visit 21/05/08 - this enclosure lies to the east of enclosure PRN31762 on a more gentle west facing slope and measures approximately 15m north-south and 10m east-west. The walls are of loose stones 1.5m wide and 0.4m high. They are badly spread and merge with the scree and rubble tumbling down the hillside, particularly on the east. The site appears to be terraced into the hillside. There is no obvious entrance. There seems to be an annexe in the form of a smaller rectangular enclosure attached to the southwest corner of the enclosure. It is approximately 5 by 4m in size and has no obvious entrance. Further up the hill above the enclosure, linear walls are visible running along the contour of the hillside, as well as at right angles to it - forming small fields? The whole complex is probably Post Medieval in date. F Murphy & Ramsey 2008

PRN: 31,766

NGR: SN69271829

SITE NAME: PANT NANT FFORCHOG

SITE TYPE: Hut circle

FORM: Earthwork

CONDITION: Substantial destruction

SUMMARY:

A possible hut circle situated on the northwest-facing moorland slopes above Pant Nant fforchog.

LONG DESCRIPTION:

Site visit 21/05/08 - a sub-circular turf covered pit with many stones protruding through the turf, as if a circular stone wall had collapsed into a hole/depression over the years. The pit has a diameter of approximately 3m and is about 0.50m deep. It is situated in a limestone area with many shake holes, and just east of a large sunken bog. F Murphy & R Ramsey 2008 First identified during the RCAHMW Meithrin Mynydd Project in 1986.

PRN: 31,814

NGR: SN77501870

SITE NAME: GARREG LAS

SITE TYPE: Enclosure

FORM: Documents

CONDITION: Unknown

SUMMARY:

Duplication of PRN 10487. The location is incorrect.

LONG DESCRIPTION:

PRN: 31,817

NGR: SN70051524

SITE NAME: FOEL DEG ARBEDOL

SITE TYPE: Enclosure

FORM: Earthwork

CONDITION: Damaged

SUMMARY:

A roughly circular enclosure situated at the bottom of the southwest facing slopes of Foel Deg Arbedol.

LONG DESCRIPTION:

A well-defined circular enclosure that has a diameter of c.24m. The circular bank is constructed from stone and is spread 1.5-2.0m wide, but still clearly visible. The bank is most obvious on the north where internally it measures c.0.5m high but is level externally, elsewhere the bank is more spread and c.0.3m high internally. There is a probable entrance 1.5m wide on the west. Built against the inside of the east bank of the enclosure is a rectangular structure, 7.0m long N-S and c.2.0m E-W. On the west inside the enclosure just by the entrance is an area of rubble and small boulders that appears to have been subdivided. F Murphy & R Ramsey

PRN: 31,825

NGR: SN70561544

SITE NAME: FOEL DEG ARBEDOL

SITE TYPE: Enclosure

FORM: Earthwork

CONDITION: Damaged

SUMMARY:

A sub-rectangular enclosure that lies amongst scree at the foot of Foel Deg Arbedol.

LONG DESCRIPTION:

A sub-rectangular enclosure that lies at the bottom of the south facing slope of Foel Deg Arbedol at 290m above sea level. The enclosure is situated on level ground amongst scree. It measures approximately 19m by 11m and its long axis is aligned E-W. An internal wall that runs N-S for c.7m appears to divide the enclosure into two equal halves. The internal wall falls short of reaching the outer wall at its southern end - indicating the position of a possible entrance. The crudely built stone and boulder wall is spread 1.5-2.0m wide and reaches a maximum height of 0.5m. F Murphy & R Ramsey 2008

PRN: 31,830

NGR: SN70631920

SITE NAME: BANC MELYN

SITE TYPE: Settlement

FORM: Earthwork

CONDITION: Damaged

SUMMARY:

This PRN covers a complex of features situated on a level area to the north of Banc Melyn, including a field system, enclosure and group of clearance cairns (PRNs 31831-31838). (RCHAMW 1986 Meithrin Mynydd Project)

LONG DESCRIPTION:

PRN: 31,831

NGR: SN70641918

SITE NAME: BANC MELYN

SITE TYPE: Enclosure

FORM: Earthwork

CONDITION: Unknown

SUMMARY:

An irregularly shaped enclosure, approximately 85m E-W with low spread stony banks.

LONG DESCRIPTION:

Not located during fieldwork in 2008. F Murphy & R Ramsey 2008. An enclosure, irregular in shape and open to the north measuring a max. of 85m. East-west by 60m and bounded by banks spread up to 2.0m wide, 0.4m high. The west bank has a distinct s-hape towards its southern end, possibly indicating a former sub-enclosure. From the southwest corner, a vague bank runs south for some 35m towrds a rock outcrop. (RCHAMW 1986 Methrin Mynydd Project)

PRN: 31,840

NGR: SN70541903

SITE NAME: CARN CENNEN

SITE TYPE: Hut circle

FORM: Earthwork

CONDITION: Damaged

SUMMARY:

A circular enclosure - small hut circle?

LONG DESCRIPTION:

A circular bank at the foot of the steep northwest facing slope of the Black Mountain above Pencaegarw Isaf. The bank is approximately 1m wide and 0.4m high, and appears to be edged in places with large stones. There is a narrow entrance on the southeast. It measures 2.5m in diameter - possible hut circle? F Murphy & R Ramsey 2008

PRN: 31,841 **NGR:** SN70401900
SITE NAME: CARN CENNEN
SITE TYPE: Field boundary
FORM: Earthwork
CONDITION: Damaged
SUMMARY:

Possible remains of a prehistoric field system on the northwest facing slope of Black Mountain above Pencaegarw Isaf. They follow a roughly east-west direction crossing steep stony ground and consist of stone and boulder banks overgrown with grass and bracken.

LONG DESCRIPTION:

The feature was not located in 2008. F Murphy & R Ramsey 2008

Two lengths of parallel bank on the northwest facing slope of Black Mountain above Pencaegarw Isaf. They follow a roughly east-west direction crossing steep stony ground and consist of stone and boulder banks overgrown with grass and bracken. This could be part of field system PRN 4478.

PRN: 31,844 **NGR:** SN70191933
SITE NAME: BLAENCENNEN
SITE TYPE: Hut circle
FORM: Earthwork
CONDITION: Damaged
SUMMARY:

A small circular enclosure located on the slopes of Pentis Blaencennen.

LONG DESCRIPTION:

Located during 2008 fieldwork. As previously described but has suffered from the effects of erosion. F Murphy & R Ramsey 2008 A small enclosure located in the lee of a locally steep slope is probably a hut circle. It lies to the NW of extensive linear banks. On plan it is slightly oval and measures about 4m (N-S) by 3m within a stony bank 1m wide and 0.4m high, fading on the NW. The SE side of the bank is obscured by slope-wash. There is a boulder-flanked entrance on the west. (RCHAMW 1986 Meithrin Mynydd Project)

PRN: 31,847 **NGR:** SN71371544
SITE NAME: NANT MELYN
SITE TYPE: Settlement
FORM: Earthwork
CONDITION: Damaged
SUMMARY:

This PRN covers a complex of features located on the west bank of the Nant Melyn, on the lower slopes of Foel Deg Arbedol. The features include an enclosure, a second possible example and a number of small rectangular structures (PRNs 31848-31850). (RCHAMW 1986 Meithrin Mynydd Project)

LONG DESCRIPTION:

PRN: 31,848 **NGR:** SN71371544
SITE NAME: NANT MELYN
SITE TYPE: Enclosure
FORM: Earthwork
CONDITION: Damaged
SUMMARY:

A small rectangular enclosure located on the west bank of Nant Melyn.

LONG DESCRIPTION:

Located during the 2008 fieldwork. Much as previously described, sheltered and overlooked on its northwest side, and appears to be set onto a slight platform. F Murphy & R Ramsey 2008 The enclosure measures 14m (N-S) by 10.5m internally, bounded by a stony bank 3m wide and 0.5m high with an entrance 1.5m wide on the south side. Within the reed grown interior are indeterminate remains of divisions and a large boulder some 0.8m by 0.5m (RCHAMW 1986 Meithrin Mynydd Project).

PRN: 31,849 **NGR:** SN71381550
SITE NAME: NANT MELYN
SITE TYPE: Enclosure
FORM: Earthwork
CONDITION: Substantial destruction
SUMMARY:

A sub-rectangular enclosure situated on the west bank of Nant Melyn.

LONG DESCRIPTION:

Possibly located during fieldwork in 2008 - it was difficult to be sure but at the given grid reference a spread of stone denser than elsewhere was noted. It could be the result of clearance or even a natural deposit of boulder erratics. No linear forms within the spread of stone were identified. F Murphy & R Ramsey 2008 An enclosure, sub-rectangular in plan, measuring c.17m (NW-SE) by 10m, bounded by a very vague boulder wall spreading up to 2.5m wide, 0.2m high. (RCHAMW 1986 Meithrin Mynydd Project)

PRN: 31,850 **NGR:** SN71371538
SITE NAME: NANT MELYN
SITE TYPE: Hut, Enclosure
FORM: Earthwork
CONDITION: Substantial destruction
SUMMARY:

Possible small sub-rectangular/oval enclosure.

LONG DESCRIPTION:

During the 2008 fieldwork an amorphous spread of stone was found at the given grid reference SN71371538. There were vague indications of linear features/walls but nothing that characterised the site. In the centre of the spread of stone is a small clearance cairn approximately 4m in diameter and 0.7m high. At c.25m to the north is a possible semi-circular feature, c.1.5m at its widest point. The whole area is obscured by reed growth and the spread of stone. F Murphy & R Ramsey 2008

The RCHAMW (1986 Meithrin Mynydd Project) record two separate sites at exactly the same grid reference SN71371538 : - PRN 31850 is recorded as the remains of a small sub-rectangular/oval structure, possibly a hut, measuring 2.5m (NW-SE) by 2m overall, with vague boulder walls up to 0.3m high. To the south, two modern shelters or shooting boxes are recorded as having been constructed in an area of boulder rubble that looks to have contained older structures at one time, but present-day traces are so fragmentary as to be uninterpretable. - PRN 31865 is recorded as an oval foundation located above the west bank of Nant Melyn. Defined by a stone and boulder bank 1.5m-2.0m wide and up to 0.5m high, its overall dimensions are 7m (NW-SE) by 4m. There is no clear break in the bank. A large boulder lies just inside the bank at its NW end.

PRN: 31,864 **NGR:** SN71851552
SITE NAME: CRAIG DERLWYN
SITE TYPE: Enclosure
FORM: Earthwork
CONDITION: Damaged
SUMMARY:

A duplicate of PRN 13578.

LONG DESCRIPTION:

PRN: 31,865

NGR: SN71371538

SITE NAME: NANT MELYN

SITE TYPE: Enclosure

FORM: Earthwork

CONDITION: Substantial destruction

SUMMARY:

Possible oval enclosure.

LONG DESCRIPTION:

During the 2008 fieldwork an amorphous spread of stone was found at the given grid reference SN71371538. There were vague indications of linear features/walls but nothing that characterised the site. In the centre of the spread of stone is a small clearance cairn approximately 4m in diameter and 0.7m high. At c.25m to the north is a possible semi-circular feature, c.1.5m at its widest point. The whole area is obscured by reed growth and the spread of stone. F Murphy & R Ramsey 2008

The RCHAMW (1986 Meithrin Mynydd Project) recorded two separate sites at exactly the same grid reference SN71371538 : - PRN 31850 is recorded as the remains of a small sub-rectangular/oval structure, possibly a hut, measuring 2.5m (NW-SE) by 2m overall, with vague boulder walls up to 0.3m high. To the south, two modern shelters or shooting boxes are recorded as having been constructed in an area of boulder rubble that looks to have contained older structures at one time, but present-day traces are so fragmentary as to be uninterpretable. - PRN 31865 is recorded as an oval foundation located above the west bank of Nant Melyn. Defined by a stone and boulder bank 1.5m-2.0m wide and up to 0.5m high, its overall dimensions are 7m (NW-SE) by 4m. There is no clear break in the bank. A large boulder lies just inside the bank at its NW end.

PRN: 31,874

NGR: SN72871570

SITE NAME: TRO'R DERLWYN

SITE TYPE: Settlement

FORM: Earthwork

CONDITION: Damaged

SUMMARY:

A settlement complex comprising hut circles, enclosures, sinuous banks (the remains of larger enclosures), platforms and stone piles (PRNs 31875-31890) that lies on a gentle southwest facing hillslope at about 300m above sea level.

LONG DESCRIPTION:

A settlement complex, comprising hut circles, enclosures, sinuous banks (the remains of larger enclosures), platforms and stone piles, that lies on a gentle southwest facing hillslope at about 300m above sea level. The presence of hut circles suggests a prehistoric date but later activity cannot be ruled out. The site features, which span an area some 200m (NE-SW) by 100m (bounded on the SE by a boulder field), are all poorly preserved and of generally vague appearance. (RCHAMW 1986 Meithrin Mynydd Project)

PRN: 31,876

NGR: SN72951573

SITE NAME: TRO'R DERLWYN

SITE TYPE: Bank (earthwork)

FORM: Earthwork

CONDITION: Unknown

SUMMARY:

A low rubble bank - part of the settlement complex PRN 31874.

LONG DESCRIPTION:

Not located during 2008 fieldwork. F Murphy & R Ramsey 2008 A low rubble bank some 1.5m wide and 0.2m high runs from the edge of the boulder field at SN72951573 northwest for about 27m until at SN72931575 it divides. Vague banks continue northwest for about 15m and southwest for 28m. (RCHAMW 1986 Meithrin Mynydd Project)

PRN: 31,877 **NGR:** SN72931572
SITE NAME: TRO'R DERLWYN
SITE TYPE: Enclosure
FORM: Earthwork
CONDITION: Substantial destruction
SUMMARY:

A small oval enclosure - part of the settlement complex PRN 31874.

LONG DESCRIPTION:

Located during fieldwork in 2008. Much as previously described. The oval shaped enclosure is just visible as a sub-circular line of stones protruding through the turf. The entrance gap on the north side is wide. F Murphy & R Ramsey 2008

An oval enclosure, measuring approx. 10m NE-SW by 9m lies some 12m from the edge of the boulder field. It is bounded by rubble banks up to 1.5m wide and 0.3m high. There is a possible entrance at the north corner, from the east side of which a short length of bank continues northwest for some 6m. (RCAHMW 1986 Meithrin Mynydd Project)

PRN: 31,879 **NGR:** SN72891572
SITE NAME: TRO'R DERLWYN
SITE TYPE: Enclosure
FORM: Earthwork
CONDITION: Substantial damage
SUMMARY:

A circular enclosure - part of the settlement complex PRN 31874.

LONG DESCRIPTION:

Located during the 2008 fieldwork. It is situated on a gentle/nearly level southwest facing slope. Much as previously described. Visible as a circular spread of stones, approximately 1m wide and 0.3m high. There might be an entrance gap on the east but long grass obscures this. F Murphy & R Ramsey 2008

A circular enclosure measuring overall about 7.5m in diameter and bounded by low rubble walls up to 2m wide and 0.3m high. There is a possible entrance on the south side. (RCAHMW 1986 Meithrin Mynydd Project)

PRN: 31,884 **NGR:** SN72811568
SITE NAME: TRO'R DERLWYN
SITE TYPE: Enclosure
FORM: Earthwork
CONDITION: Substantial damage
SUMMARY:

An unusual triangular shaped enclosure - part of settlement complex PRN 31874.

LONG DESCRIPTION:

Located during the 2008 fieldwork. Situated on a moderate southwest facing hillslope. Much as previously described, but the unusual triangular enclosure appears to have been terraced into the slope of the hill. It also has a concave interior as though it has been hollowed out, and this is deeper on its northeast side at c.0.5m deep. There is no obvious entrance, although there are a number of gaps on the west side. F Murphy & R Ramsey 2008

A roughly triangular enclosure the southwest corner of walls up to 1.5m wide and 0.4m high. The interior is rubble-filled. (RCAHMW 1986 Meithrin Mynydd project)

PRN: 31,890 **NGR:** SN72841559
SITE NAME: TRO'R DERLWYN
SITE TYPE: Enclosure
FORM: Earthwork
CONDITION: Substantial destruction
SUMMARY:

Possible oval enclosure - possibly part of settlement complex 31874.

LONG DESCRIPTION:

Located during 2008 fieldwork. Situated on a moderate southwest facing hillslope. An oval shaped enclosure visible as a spread of stone protruding through the turf. It is very nearly circular measuring 7.5m N-S and 7.0m E-W. The very vague rubble banks are approximately 1.0m wide but not continuous with gaps on the east and west, but there is no obvious entrance. There are occasional large boulders within the spread of stone. F Murphy & R Ramsey 2008

Outside the main area of the site lies a possible enclosure, oval in plan, measuring 9m E-W by 6m. The northern half is bounded by a vague rubble bank about 1.0m wide and 0.2m high, the southern half is defined by a slight ditch. Adjacent on the NE is the vague impression of a further possible enclosure, measuring about 6.5m NW-SE by 5.5m. (RCAHMW 1986 Meithrin Mynydd Project)

PRN: 31,900 **NGR:** SN72171577
SITE NAME: CRAIG DERLWYN
SITE TYPE: Enclosure
FORM: Earthwork
CONDITION: Damaged
SUMMARY:

A sub-circular enclosure situated just below the summit of Craig Derlwyn at 320m above sea level.

LONG DESCRIPTION:

A sub-circular enclosure with an approximate diameter of 13m that includes a spread stony bank 1.0-1.2m wide. The concave interior is turf covered with a few stones protruding through it. F Murphy & R Ramsey 2008

PRN: 31,901 **NGR:** SN72201575
SITE NAME: CRAIG DERLWYN
SITE TYPE: Field boundary
FORM: Earthwork
CONDITION: Damaged
SUMMARY:

A curvilinear stoney bank just below the summit of Craig Derlwyn at 320m above sea level.

LONG DESCRIPTION:

A curvilinear bank that is c. 40m long whose western end is approximately 70m east of enclosure PRN 31900. It is c.1.0-1.5m wide and 0.3m high. It appears to form a boundary between stony ground to the north and clearer ground to the south.

PRN: 32,175 **NGR:** SN72391664
SITE NAME: NANT GARW
SITE TYPE: Shelter,Hut circle
FORM: Earthwork
CONDITION: Damaged
SUMMARY:

A C-shaped bank, possibly a hut circle - part of settlement complex PRN 32174.

LONG DESCRIPTION:

Located during fieldwork in 2008. Much as previously described. F Murphy & R Ramsey 2008

A C-shaped bank, possibly a hut circle, open on the east, of limestone rubble and blocks protruding from the turf up to 0.3m high and 1.5m wide, measuring overall 5.8m N-S by 5.0m. (RCAHMW 1986 Methrin Mynydd Project)

PRN: 32,176 **NGR:** SN72341662
SITE NAME: NANT GARW
SITE TYPE: Bank (earthwork)
FORM: Earthwork
CONDITION: Substantial destruction
SUMMARY:

An L-shaped bank of turf covered limestone rubble - part of settlement complex PRN 32174.

LONG DESCRIPTION:

Not located during 2008 fieldwork. F Murphy & R Ramsey 2008

An L-shaped bank of turf covered limestone rubble, spread to 1.5m wide by 0.4m high and measuring 13.5m W-E then 4.2m N-S, the west end incorporating the north wall of a possible building 3.1m square.
(RCAHMW 1986 Meithrin Mynydd Project)

PRN: 32,177 **NGR:** SN72331657
SITE NAME: NANT GARW
SITE TYPE: Shelter, Hut circle
FORM: Earthwork
CONDITION: Substantial destruction
SUMMARY:

A possible hut circle - part of settlement complex PRN 32174.

LONG DESCRIPTION:

Located during 2008 fieldwork. As previously described. F Murphy & R Ramsey 2008

A possible hut circle, 5.7m N-S by 5.2m overall, now badly mutilated, marked by two crescent-shaped lines of limestone blocks on the NW and SE protruding up to 0.3m from the turf.
(RCAHMW 1986 Meithrin Mynydd Project)

PRN: 32,178 **NGR:** SN72311654
SITE NAME: NANT GARW
SITE TYPE: Enclosure
FORM: Earthwork
CONDITION: Damaged
SUMMARY:

A circular enclosure - part of settlement complex PRN 32174.

LONG DESCRIPTION:

Located during fieldwork in 2008. An unusual feature that lies on a gentle south facing slope overlooking the Nant Garw valley. As previously described, it is clearly visible as a circular line of limestone boulders protruding through the turf, as is the "entrance" annexe on the northwest. The wall that runs from the second entrance on the east side of the enclosure is still visible running to the NE for 50m. F Murphy & R Ramsey 2008

A roughly circular enclosure 11.5m in diameter bounded by banks of medium and large limestone rubble spread to 2m wide and up to 0.4m high. An annexe on the NW approx. 2.5m square is marked by a line of stones protruding up to 0.15m from the turf, with entrance gaps in the NW of the annexe and the main enclosure. There is another entrance gap on the east of the ring 1.8m wide, and from the north jamb runs a wall 50m to the NE, spread to 2.5m by 0.2m high and composed of turf-consolidated limestone rubble.
(RCAHMW 1986 Meithrin Mynydd Project)

PRN: 32,179 **NGR:** SN72361657
SITE NAME: NANT GARW
SITE TYPE: Enclosure
FORM: Earthwork
CONDITION: Damaged
SUMMARY:

A circular enclosure - part of settlement complex PRN 32174.

LONG DESCRIPTION:

Located during fieldwork in 2008. As previously described. F Murphy & R Ramsey 2008

An enclosure, 7m in diameter, with a bank of turf-grown limestone rubble, loose on the south and east, spread to 1.5m wide and 0.3m high, with an entrance gap on the NW 1.5m wide. The wall that runs NE from enclosure PRN 32178 stops some 3m to the SW of this enclosure.
(RCAHMW 1986 Meithrin Mynydd Project)

PRN: 32,180 **NGR:** SN72391656
SITE NAME: NANT GARW
SITE TYPE: Hut circle, Enclosure
FORM: Earthwork
CONDITION: Damaged
SUMMARY:

A possible hut circle - part of settlement complex PRN 32174.

LONG DESCRIPTION:

Located during fieldwork in 2008. As previously described. Situated on a steeper area of southwest facing slope than the rest of the settlement complex, which is probably why it has been slightly terraced into the hillside. F Murphy & R Ramsey 2008

An enclosure, possibly a hut circle, 6.5m in diameter, embanked on the west and cut into the slope on the east, consisting of a turf covered rubble bank 1.5m wide and up to 0.3m high.
(RCAHMW 1986 Meithrin Mynydd Project)

PRN: 32,181 **NGR:** SN72351654
SITE NAME: NANT GARW
SITE TYPE: Hut circle
FORM: Earthwork
CONDITION: Substantial destruction
SUMMARY:

The remains of a circular enclosure - part of the settlement complex PRN 32174.

LONG DESCRIPTION:

Located during fieldwork in 2008. Situated on a southwest facing slope east of the Nant Garw valley. As previously described but more a discontinuous circular line of stones protruding through the turf. F Murphy & R Ramsey 2008

A badly damaged enclosure, approximately 8m in diameter, with turf-grown limestone rubble banks spread to 1.5m wide by 0.3m high. There 1.5m gaps on the west and east sides and stone rubble scattered in the interior. (RCAHMW 1986 Methrin Mynydd Project)

PRN: 32,184 **NGR:** SN72331649
SITE NAME: NANT GARW
SITE TYPE: Bank (earthwork)
FORM: Stone spread
CONDITION: Substantial destruction
SUMMARY:

A square U-shaped bank - part of settlement complex PRN 32174.

LONG DESCRIPTION:

Located during 2008 fieldwork. Highly speculative - more a general spread of stone, but much as previously described. F Murphy & R Ramsey 2008

A square U-shaped bank open to the north, 5.5m E-W by 3.4m N-S, of turf-consolidated limestone rubble spread to 1.5m wide and 0.2m high. (RCAHMW 1986 Meithrin Mynydd Project)

PRN: 32,202 **NGR:** SN72401694
SITE NAME: CWM GARW
SITE TYPE: Bank (earthwork)
FORM: Earthwork
CONDITION: Substantial destruction
SUMMARY:

A vague L-shaped bank - part of the settlement complex PRN 32198.

LONG DESCRIPTION:

Not located during the 2008 fieldwork. F Murphy & R Ramsey 2008

A vague L-shaped bank built into the rising ground on the NW, whose 1m and 0.4m high turf banks encompass an area approx. 2m square.
(RCAHMW 1986 Meithrin Mynydd Project)

PRN: 32,212 **NGR:** SN73171544
SITE NAME: GARREG LWYD
SITE TYPE: Hut circle
FORM: Stone built structure
CONDITION: Substantial damage
SUMMARY:

A hut circle - part of settlement complex PRN 32209.

LONG DESCRIPTION:

Located during fieldwork in 2008. Situated on a steeply sloping SW facing slope north of boggy ground that drops to the valley below. Good views to south and west. The hut circle is slightly terraced into the hillside on the north. Otherwise as previously described. F Murphy & R Ramsey 2008

A possible hut circle measuring 5m across with an entrance on the SE side. It is bounded on the south by a boulder wall up to 0.6m high and elsewhere by a stony bank 0.5m wide and 0.3m high. (RCAHMW 1986 Meithrin Mynydd Project)

PRN: 32,213 **NGR:** SN73111548
SITE NAME: GARREG LWYD
SITE TYPE: Hut circle
FORM: Stone built structure
CONDITION: Substantial damage
SUMMARY:

A possible hut circle - part of settlement complex PRN 32209.

LONG DESCRIPTION:

Located during 2008 fieldwork. As previously described. The gap in the boulder wall on the NE may be the position of an entrance. F Murphy & R Ramsey 2008

A possible hut circle scooped out of the hillside. It measures 5m SE-NW by 3.5m, being dug into the slope on the NE, and built up to a height of 1m by a boulder revetment on the SW. A vague boulder wall bounds it except at the NE. (RCAHMW 1986 Meithrin Mynydd Project)

PRN: 32,214 **NGR:** SN73121549
SITE NAME: GARREG LWYD
SITE TYPE: Enclosure
FORM: Earthwork
CONDITION: Substantial destruction
SUMMARY:

An irregular-shaped enclosure - part of settlement complex PRN 32209.

LONG DESCRIPTION:

Located during 2008 fieldwork. Irregular in shape but possibly once sub-rectangular. East wall some 6m long, North wall c.11m long but the two other walls are more nebulous and impossible to define on the ground - more a vague spread of stone. F Murphy & R Ramsey 2008

An enclosure of irregular plan. It is bounded by vague banks of consolidated rubble spread up to 2m wide and 0.5m high. (RCAHMW 1986 Meithrin Mynydd Project)

PRN: 32,217 **NGR:** SN73161550
SITE NAME: GARREG LWYD
SITE TYPE: Hut circle
FORM: Earthwork
CONDITION: Substantial damage
SUMMARY:

A possible hut circle - part of settlement complex PRN 32209.

LONG DESCRIPTION:

Visited during 2008 fieldwork. Much as previously described. Defined by a very low vague bank, possible entrance on the SE. Slightly concave interior. F Murphy & R Ramsey 2008

A hut circle 5.5m in overall diameter defined by a vague boulder wall up to 1.5m wide and 0.4m high lies on a slight platform scooped out on the NE, built up on the SW. (RCAHMW 1986 Meithrin Mynydd Project)

PRN: 32,219 **NGR:** SN73131554
SITE NAME: GARREG LWYD
SITE TYPE: Enclosure
FORM: stone built structure
CONDITION: Substantial damage
SUMMARY:

A circular enclosure - part of settlement complex PRN 32209.

LONG DESCRIPTION:

Visited during the 2008 fieldwork - it is an unusual feature. The circular enclosure is approximately 12m in diameter, and the boulder wall that defines it is good to the N and the NW, but the remainder is much more of a vague bank, but as described previously the shape of the feature is clearly defined by the reeds growing inside. No entrance is visible. The enclosure appears to have been slightly terraced into the hillside on the N. The adjacent rectangular platform is as described. F Murphy & R Ramsey 2008

A circular enclosure c.12m in diameter. The NE half is defined by a boulder wall 0.8m wide and 0.8m high, the remainder by a vague bank, but the general shape of the feature is clearly defined by rushes growing inside. Immediately adjacent on the SE is a boulder filled rectangular platform measuring some 9m NW-SE by 7m. It has been dug into the slope to a depth of c.0.8m on the NE side and built up to a height of 0.5m on the SW. (RCAHMW 1986 Meithrin Mynydd Project)

PRN: 32,224 **NGR:** SN73331562
SITE NAME: GARREG LWYD
SITE TYPE: Long hut
FORM: Earthwork
CONDITION: Substantial damage
SUMMARY:

A vague rectangular structure - part of settlement complex PRN 32209.

LONG DESCRIPTION:

It was difficult to be sure that the correct site had been located during the 2008 fieldwork, as the whole area is a spread of stone. However, a feature with similar characteristics was located, terraced into the hillside with two internal walls, of the same dimensions but the feature was aligned N-S not E-W, and the internal walls ran E-W not N-S. If this is the same site the grid reference is incorrect and should be SN 73301564. Nothing else could be found in the vicinity of the given grid reference SN 73331562. F Murphy & R Ramsey 2008

A vague rectangular structure lies at the northern edge of a marshy area. It measures 7.5m E-W by 3.5m and is bounded by vague boulder walls 0.3m high. The north wall is revetted against the hill slope. Internally the structure appears to have been divided into three parts by N-S walls. (RCAHMW 1986 Meithrin Mynydd Project)

PRN: 32,225 **NGR:** SN73341567
SITE NAME: GARREG LWYD
SITE TYPE: Building platform
FORM: Other structure
CONDITION: Damaged
SUMMARY:

Two lengths of boulder wall and platform - part of the settlement complex PRN 32209.

LONG DESCRIPTION:

Located during fieldwork in 2008. Much as previously described by the RCAHMW, although the orientation of the long axis of the platform is NW-SE not N-S, and the two short lengths of wall each form a right angle corner to the built up western side of the platform with a gap between them on the same western side, as if for an entrance. F Murphy & R Ramsey 2008

Two lengths of boulder wall lie towards the north end of a platform which measures 16m N-S by 5.5m, and which is dug into the slope on the east, built up on the west. The northern most section of wall, 0.8m wide and 0.6m high runs E-W 4.5m to the lip of the platform then 3.5m south. After a break of 5m the other section continues south for 2.5m then runs east for 3m. The walls are not square to the platform, the corner of the southern section being some 1.3m from the lip. (RCAHMW 1986 Meithrin Mynydd Project)

PRN: 32,228 **NGR:** SN73391578

SITE NAME: GARREG LWYD

SITE TYPE: Wall,Enclosure

FORM: Earthwork

CONDITION: Substantial damage

SUMMARY:

A crescent shaped segment of walling - part of settlement complex PRN 32209.

LONG DESCRIPTION:

Visited during 2008 fieldwork. Much as previously described. There is a gap in the wall on the west.
F Murphy & R Ramsey 2008

A crescent shaped segment of walling, possibly the remains of a circular or oval enclosure. It measures 10m NE-SW across the chord, bowing out some 3.5m to the NW and averages about 0.8m wide, 0.5m high. (RCAHMW 1986 Meithrin Mynydd Project)

PRN: 32,230 **NGR:** SN73501575

SITE NAME: GARREG LWYD

SITE TYPE: Enclosure

FORM: Earthwork

CONDITION: Substantial damage

SUMMARY:

An oval enclosure - part of settlement complex PRN 32230

LONG DESCRIPTION:

Visited during 2008 fieldwork. Much as previously described. The entrance on the SE is c.2.0m wide. The enclosure measures c.7.5m by 5.5m (externally) and has a concave interior. On the NNE outside of the enclosure is a spread of stone that might indicate an annexe or a separate enclosure but reed growth obscures the area. F Murphy & R Ramsey 2008

An oval enclosure measuring internally 5.5m N-S by 4.0m bounded by walls spreading up to 1.5m wide, 0.3m high. It is slightly built up on the W side and cut into the slope on the E. There is a possible entrance on the SE. (RCAHMW 1986 Meithrin Mynydd Project)

PRN: 32,242 **NGR:** SN73801559

SITE NAME: FOEL DEG

SITE TYPE: Hut circle

FORM: Earthwork

CONDITION: Substantial destruction

SUMMARY:

Possible hut circle.

LONG DESCRIPTION:

A possible hut circle located together with PRNs 32243-4 on a SW facing hillslope on a drier ridge of land between two boggy areas. Visible as a circle of stones protruding through the turf, it is located very close to another more definite hut circle PRN 32244 that lies to the south. There is no obvious entrance. It is c.3.5m in diameter, with walls c.1.0 wide. It has a concave interior.
F Murphy & R Ramsey 2008

PRN: 32,243 **NGR:** SN73811562

SITE NAME: FOEL DEG

SITE TYPE: Hut circle

FORM: Earthwork

CONDITION: Substantial destruction

SUMMARY:

A possible hut circle.

LONG DESCRIPTION:

Visited during the 2008 fieldwork. A possible hut circle - visible as a circular wide spread of stone c.1.0 wide, and 0.25m high. Approximately 4.25m in diameter. Some indication of an entrance on the SE. F Murphy & R Ramsey 2008

PRN: 32,244 **NGR:** SN73791559
SITE NAME: FOEL DEG
SITE TYPE: Hut circle
FORM: Earthwork
CONDITION: Substantial destruction
SUMMARY:

A possible hut circle.

LONG DESCRIPTION:

Visited during the 2008 fieldwork. This circular feature is approximately 3.0m in diameter, with an entrance on the S, and is defined by a circular spread of stone boulders, approximately 1.0m wide and 0.4m high. A possible hut circle? - it is more definite than PRN 32242 that lies close by to the N. On inspection it was wondered if the two circles formed a 2-celled structure, but they had the appearance more of two separate structures. F Murphy & R Ramsey 2008

PRN: 32,266 **NGR:** SN74471563
SITE NAME: FFORCHAMAN
SITE TYPE: Enclosure
FORM: Earthwork
CONDITION: Substantial destruction
SUMMARY:

Remains of a sub-rectangular enclosure.

LONG DESCRIPTION:

What appears to be the remains of a rectangular enclosure lie on a steep south facing slope on open moorland at 330m above sea level. It measures approximately 6m north-south and 5.5m east-west, and is defined by a limestone rubble bank. The bank is c.1m wide and 0.5m high. There is a possible entrance on the east side. F Murphy & R Ramsey 2008

PRN: 32,267 **NGR:** SN74471563
SITE NAME: FFORCHAMAN
SITE TYPE: Enclosure
FORM: Earthwork
CONDITION: Substantial destruction
SUMMARY:

Remains of an oval enclosure - possible hut circle.

LONG DESCRIPTION:

Not found during 2008 fieldwork - the NGR is incorrect -this is a duplication of PRN 32266
F Murphy & R Ramsey 2008

What appears to be a hut circle is situated to the S of Fforchaman and some 40m E of the Aman Fach. On plan it is slightly oval and measures 4m N-S by 3.2m within a low stony bank 1-1.7m wide and up to 0.4m high. Overall dimensions are 6m N-S by 5.2m. The bank fades on the E, possibly the site of an entrance. The interior is slightly sunken. (RCAHMW 1993)

PRN: 32,289 **NGR:** SN75691470
SITE NAME: CWM LLYNFELL
SITE TYPE: Settlement
FORM: Earthwork
CONDITION: Damaged
SUMMARY:

This PRN covers the group of enclosures, irregular strips of stone clearance and rectangular buildings that lie on terraces above the west bank of the Nant Llynfell, just beyond the limit of the modern enclosure.

LONG DESCRIPTION:

This PRN covers the group of enclosures, irregular strips of stone clearance and rectangular buildings that lie on terraces above the west bank of the Nant Llynfell, just beyond the limit of the modern enclosure. The features include PRNs 13469-13474, 32290-32292.

PRN: 32,294 **NGR:** SN75831455
SITE NAME: COEDCAE MAWR
SITE TYPE: Enclosure
FORM: Earthwork
CONDITION: Damaged
SUMMARY:

Remnant of possible enclosure wall.

LONG DESCRIPTION:

Visited during the 2008 fieldwork. A section of curving wall - possibly part of a former enclosure or sheepfold? The wall is visible as a low earthwork with some stones protruding through the turf, and measures c.0.5m wide, c.0.3m high. Within the curve the ground is slightly raised and stone free. F Murphy & R Ramsey 2008

PRN: 32,297 **NGR:** SN76201400
SITE NAME: LLWYN YR YN
SITE TYPE: Settlement, Mining landscape
FORM: Earthwork
CONDITION: Substantial destruction
SUMMARY:

A group of irregular earthworks on the south-west-facing slopes above Henllys Vale coalmine.

LONG DESCRIPTION:

Visited during 2008 fieldwork - walked over area, many undulations, irregular earthworks and piles of stone. Could some of these be the result or side effect of the nearby mineworkings/hushings - not convincing as a prehistoric settlement. F Murphy & R Ramsey 2008

A group of possible hut circles, enclosures and stone piles that lie on an undulating SW- facing slope, includes PRNs 32298-32302.

PRN: 32,298 **NGR:** SN76251404
SITE NAME: LLWYN YR YN
SITE TYPE: Mining landscape, Enclosure
FORM: Earthwork
CONDITION: Substantial destruction
SUMMARY:

Possible result of local mineworkings or a vague circular enclosure - part of group PRN 32297.

LONG DESCRIPTION:

Visited in 2008 - dimensions as previously described but the circle is discontinuous everywhere. It is a spread curving line of stones that form a vague circle, with each stone having an ant hill on top. F Murphy & R Ramsey 2008

An enclosure measuring 22m in diameter within a broad stony bank up to 1.5m wide and 0.3m high. The bank is discontinuous on the N. (RCAHMW 1986 Meithrin Mynydd Project)

PRN: 32,299 **NGR:** SN76251408
SITE NAME: LLWYN YR YN
SITE TYPE: Mining landscape, Hut circle
FORM: Earthwork
CONDITION: Substantial destruction
SUMMARY:

Possible result of mineworkings or hut circle - part of group PRN 32297.

LONG DESCRIPTION:

Visited during the 2008 fieldwork. Located on a S facing slope. Much as previously described with a concave interior. F Murphy & R Ramsey 2008

What appears to be a hut circle is defined by a ring of small boulders and measures 4m in diameter, entrance on the E. (RCAHMW 1986 Meithrin Mynydd Project)

PRN: 32,300 **NGR:** SN76301407

SITE NAME: LLWYN YR YN

SITE TYPE: Mining landscape, Enclosure

FORM: Earthwork

CONDITION: Substantial destruction

SUMMARY:

Result of local mineworkings or a possible D-shaped enclosure - part of group PRN 32297.

LONG DESCRIPTION:

Not located during the 2008 fieldwork. F Murphy & R Ramsey 2008

A D-shaped enclosure is built against the NE side of a scree band and measures 12m NE-SW by 11m, defined by a low stony bank 1m wide and 0.2m high. (RCAHMW 1986 Meithrin Mynydd Project)

PRN: 32,316 **NGR:** SN75352064

SITE NAME: CWM CEULAN

SITE TYPE: Hut circle, Animal shelter

FORM: Earthwork

CONDITION: Unknown

SUMMARY:

A small circular enclosure situated on the east bank of the Afon Ceulan - part of settlement complex PRN 32315.

LONG DESCRIPTION:

Visited during the 2008 fieldwork. Much as previously described, although there is an adjoining arc of curving bank to the NE of the hut circle, c.5m long. There is no obvious entrance to the enclosure but best possibility is on the NE. Possible prehistoric hut circle? This site is a duplication of PRN 13416 (which was at the wrong NGR). F Murphy & R Ramsey 2008

On the E bank adjacent to the stream, at SN75352064 is a small circular enclosure with an internal diameter of 1.8m, bounded by a boulder wall 0.6m thick and 0.3m high. From the NW, a rough boulder-built bank c.2m wide and 0.8m high runs N alongside the stream for about 12m. (RCAHMW 1986 Meithrin Mynydd Project)

PRN: 32,317 **NGR:** SN75322068

SITE NAME: CWM CEULAN

SITE TYPE: Long house

FORM: Building - ruined

CONDITION: Damaged

SUMMARY:

A rectangular enclosure situated on the west side of the Afon Ceulan gorge - part of settlement complex PRN 32315.

LONG DESCRIPTION:

Visited during the 2008 fieldwork - this feature is as previously described. This site is a duplication of PRN 13418. F Murphy & R Ramsey 2008

To the W at SN 75322068, at the top of the gorge, and in a marshy hollow running parallel to it, lies a further structure. Overall it measures 11.5m, N-S by 5.5m, and is divided into three approximately equal compartments N-S. It is bounded by boulder walls 0.8m thick and 0.6m high, the W wall being scarped into the hillside. (RCAHMW 1986 Meithrin Mynydd Project)

PRN: 32,325 **NGR:** SN75002040
SITE NAME: TRUMAN
SITE TYPE: Cairnfield
FORM: Earthwork
CONDITION: Substantially intact
SUMMARY:

A group of small clearance cairns located on the north-facing slope of Truman.

LONG DESCRIPTION:

Visited during 2008 - as previously described. This is a duplication of PRN 13423. F Murphy & R Ramsey 2008

A broad clear grassy terrace, suitable for cultivation upon which lies a number of small cairns. The terrace forms a well defined natural feature some 250m long (E-W) by 50m wide. Four small cairns lie towards its E end - 1) SN 75082044 stony mound 5m across and 0.3m high - 2) SN 75072041 stony mound 5m (N-S) by 4m and 0.2m high - 3) SN 75112042 stony scatter 4m across - 4) SN 75112044 stony mound 5m (N-S) by 3m and 0.2m high, in slight hollow (RCAHMW 1986 Meithrin Mynydd Project)

PRN: 32,360 **NGR:** SN74242023
SITE NAME: TRUMAN
SITE TYPE: Hut circle
FORM: Earthwork
CONDITION: Damaged
SUMMARY:

Small circular enclosure - possible prehistoric hut circle - located on the north-west facing slopes of Truman.

LONG DESCRIPTION:

Visited during the 2008 fieldwork - much as previously described by the RCAHMW as part of the 1986 Meithrin Mynydd Project. It does appear to have been slightly terraced into the NW facing slope, and has quite a level interior. This site is a duplicate of PRN 13431. F Murphy & R Ramsey 2008

Probable prehistoric hut circle. Described by the RCAHMW as a small oval enclosure exposed and damaged by the passage of a track across the NW-facing slopes of Truman. It measures 5m NE-SW by 3.5m within a low stony bank 1m wide and 0.2m high. The bank is composed of small stones on the uphill side where pathway erosion has been greatest, whereas on the downhill side larger stones are visible. There is no obvious entrance and it is possible that this could be the remains of a ring cairn rather than a hut circle. The description by the RCAHMW accredits DAT for information regarding this site at given NGR SN74182016. This latter NGR refers to site 13431, so this record could be a duplicate of this site. NAP 2002

PRN: 32,408 **NGR:** SN73481497
SITE NAME: CWM FYDD
SITE TYPE: Settlement
FORM: Earthwork
CONDITION: Substantial destruction
SUMMARY:

A group of enclosures located on the west bank of Nant Fydd that includes PRNs 13519-20, and 32409-11.

LONG DESCRIPTION:

A number of the enclosures within this group were visited during the 2008 fieldwork. F Murphy & R Ramsey 2008

A group of structures is located in the narrow stream valley cutting of the Upper Fydd, on the west bank of the river where the flood plain Broadens. The most complex structure of the group is PRN 13520. (RCAHMW 1986 Meithrin Mynydd Project)

PRN: 32,409 **NGR:** SN73481498
SITE NAME: CWM FYDD
SITE TYPE: Long house
FORM: Earthwork
CONDITION: Substantial destruction
SUMMARY:

A possible 2-celled long house - part of settlement group PRN 32408.

LONG DESCRIPTION:

Visited during the 2008 fieldwork. A rectangular 2-celled enclosure whose long axis is aligned E-W. The western cell is c.4m by 4m, and the adjoining eastern cell, on a slightly lower level, is c.3m by 3m. It is situated on a platform overlooking the stream to the east, and boggy ground to the west. There might be an entrance at the NW corner but dense reed growth obscures most of the site. F Murphy & R Ramsey 2008

A rectangular enclosure measuring 8m NW-SE by 4.5m overall and defined by stone/boulder banks 1.5m wide and 0.3m high. (RCAHMW 1986 Meithrin Mynydd Project)

PRN: 32,410 **NGR:** SN73481494
SITE NAME: CWM FYDD
SITE TYPE: Enclosure
FORM: Earthwork
CONDITION: Unknown
SUMMARY:

A small annular enclosure - part of settlement group PRN 23408.

LONG DESCRIPTION:

Not located during the 2008 fieldwork. F Murphy & R Ramsey 2008

On the edge of the E bank of the stream is an annular enclosure, probably a small animal pen. It measures 2.5m in diameter within a stony bank 1m wide and 0.3m high. There is a gap in the SW arc. (RCAHMW 1986 Meithrin Mynydd Project)

PRN: 32,411 **NGR:** SN73461494
SITE NAME: CWM FYDD
SITE TYPE: Bank (earthwork)
FORM: Earthwork
CONDITION: Unknown
SUMMARY:

A curving bank - part of settlement group PRN 32408

LONG DESCRIPTION:

Not located during the 2008 fieldwork F Murphy & R Ramsey 2008

On the W bank, an arc of banking built against the steeply rising stream valley side. It is 0.3m high and 4m across NE-SW, enclosing an area 2.5m across. (RCAHMW 1986 Meithrin Mynydd Project)

PRN: 32,417 **NGR:** SN74591446
SITE NAME: TWYN Y MOCH
SITE TYPE: Enclosure
FORM: Earthwork
CONDITION: Substantial destruction
SUMMARY:

A sub-rectangular enclosure on the SW-facing slope of Twyn y Moch.

LONG DESCRIPTION:

Visited during the 2008 fieldwork. It was very difficult to locate. The NGR is confirmed as SN74591446. The enclosure is much as previously described. There is a definite entrance gap on the SE. This site is a duplication of PRN 13453 whose co-ordinates are incorrect. F Murphy & R Ramsey 2008

The enclosure lies on a natural terrace within a scree-strewn area of the hillside. It measures, internally, 9m NE-SW by 5.8m at its NE end and 3.5m wide at its SW end. It is defined by a low stony bank averaging 1m wide and 0.2m high. The SE side changes direction sharply at a point 4m from the NE end in such a way as to afford a "boot" shape to the enclosure on plan. The interior is grassy and stone-free. There is a narrow gap on the SE side where the enclosure is narrowest, just at the point where it begins to widen. (RCAHMW 1986 Meithrin Mynydd Project)

PRN: 32,418 **NGR:** SN74381498

SITE NAME: CWM AMAN
SITE TYPE: Cultivation terrace
FORM: Earthwork
CONDITION: Substantially intact
SUMMARY:

A terrace above the Afon Aman that has the appearance of once being cultivated.

LONG DESCRIPTION:

Situated on the western bank of the Afon Aman this terrace measures 60m north-south by 12m. Site not located during 2008 project. F Murphy & R Ramsey 2008

ACKNOWLEDGEMENTS

Thanks are due to the landowners who granted access to their land to view the sites. Frances Murphy and Richard Ramsey visited the sites, and Frances Murphy wrote this report. Marion Page extracted the site data from the Historic Environment Record and verified the new data collected during the study

REFERENCES

Austin, L and Page, M 2007, *Appraisal of Minor Site Types in Dyfed: Prehistoric, Roman and Medieval Fortified Dwellings*, unpublished report by Dyfed Archaeological Trust, Report No 2007/81, for Cadw.

Leighton, D 1997, *Mynydd Du and Fforest Fawr*, RCAHMW.

Morgan, D E 1988, *Black Mountain/Mynydd Du Survey*, Archaeology in Wales 28.

Morgan, D E 1989, *Black Mountain – Mynydd Du Survey*, Archaeology in Wales 29.

SCHEDULING ENHANCEMENT PROJECT 2009: PREHISTORIC SITES FIELDWORK - CARMARTHENSHIRE

RHIF YR ADRODDIAD / REPORT NUMBER 2009/11

**Mawrth 2009
March 2009**

Paratowyd yr adroddiad hwn gan / This report has been prepared by Frances
Murphy

Swydd / Position: Archaeologist

Llofnod / Signature Dyddiad / Date

Mae'r adroddiad hwn wedi ei gael yn gywir a derbyn sêl bendith
This report has been checked and approved by Kenneth Murphy

ar ran Ymddiriedolaeth Archaeolegol Dyfed Cyf.
on behalf of Dyfed Archaeological Trust Ltd.

Swydd / Position: Trust Director

Llofnod / Signature Dyddiad / Date

Yn unol â'n nôd i roddi gwasanaeth o ansawdd uchel, croesawn unrhyw sylwadau
sydd gennych ar gynnwys neu strwythur yr adroddiad hwn

As part of our desire to provide a quality service we would welcome any
comments you may have on the content or presentation of this report