

A SURVEY OF DEFENDED ENCLOSURES IN CARMARTHENSHIRE, 2007-08: GAZETTEER OF ORDNANCE SURVEY GRID SQUARES SN01, SN02, SN10, SN11 & SN12



RCAHMW Crown Copyright © reference DI2007_1678

Prepared by Dyfed Archaeological Trust
For Cadw



ymddiriedolaeth archaeolegol
DYFED
archaeological trust

DYFED ARCHAEOLOGICAL TRUST

RHIF YR ADRODDIAD / REPORT NO. 2007/27
RHIF Y PROSIECT / PROJECT RECORD NO. 62767

Mawrth 2008
March 2008

A SURVEY OF DEFENDED ENCLOSURES IN CARMARTHENSHIRE, 2007-08: GAZETTEER OF ORDNANCE SURVEY GRID SQUARES SN01, SN02, SN10, SN11 & SN12

Gan / By

F Murphy, R Ramsey, M Page and K Murphy

Paratowyd yr adroddiad yma at ddefnydd y cwsmer yn unig. Ni dderbynnir cyfrifoldeb gan Archaeoleg Cambria am ei ddefnyddio gan unrhyw berson na phersonau eraill a fydd yn ei ddarllen neu ddibynnu ar y gwybodaeth y mae'n ei gynnwys

The report has been prepared for the specific use of the client. Cambria Archaeology can accept no responsibility for its use by any other person or persons who may read it or rely on the information it contains.



Llywodraeth Cynulliad Cymru
Welsh Assembly Government

Ymddiriedolaeth Archaeolegol Dyfed Cyf
Neuadd y Sir, Stryd Caerfyrddin, Llandeilo, Sir
Gaerfyrddin SA19 6AF
Ffon: Ymholiadau Cyffredinol 01558 823121
Adran Rheoli Treftadaeth 01558 823131
Ffacs: 01558 823133
Ebost: cambria@cambria.org.uk
Gwefan: www.cambria.org.uk

Dyfed Archaeological Trust Limited
The Shire Hall, Carmarthen Street, Llandeilo,
Carmarthenshire SA19 6AF
Tel: General Enquiries 01558 823121
Heritage Management Section 01558 823131
Fax: 01558 823133
Email: cambria@cambria.org.uk
Website: www.cambria.org.uk

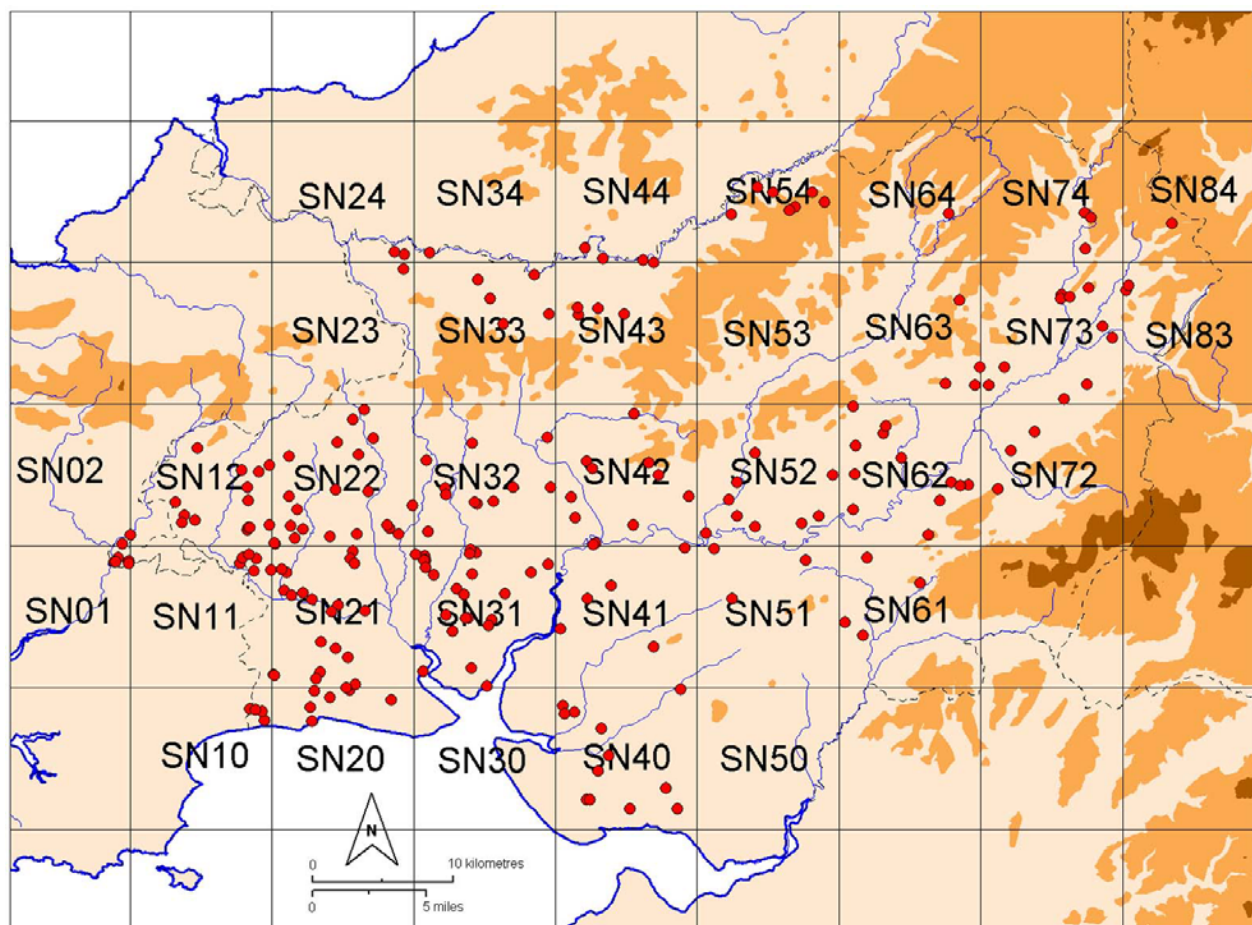
Cwmni cyfyngedig (1198990) ynghyd ag elusen gofrestredig (504616) yw'r Ymddiriedolaeth. The Trust is both a Limited Company (No. 1198990) and a Registered Charity (No. 504616)

CADEIRYDD CHAIRMAN: C R MUSSON MBE B Arch FSA MIFA. CYFARWYDDWR DIRECTOR: K MURPHY BA MIFA

SITE GAZETTEER OF 10KM GRID SQUARES SN01, SN02, SN10, SN11 & SN12

For ease of handling the site gazetteers have been arranged into Ordnance Survey 10km grid squares. Each gazetteer consists of one or more 1:50,000 maps showing the overall location of each site followed by the individual entries for each site. Each entry comprises: a printout from the Historic Environment Record, including a site description; where available a ground photograph and an aerial photograph; and a 1:5000 map.

Some of the 1:5000 maps show details of the site plotted from cropmarks shown on aerial photographs. These plots are supplied by RCAHMW Crown Copyright ©.



Index to the gazetteers of defended enclosures and related sites. Gazetteers are arranged by 10km grid squares.



Map based on the Ordnance Survey 1:50,000 map showing the distribution of sites in 10 km grid square SN01.

This map is reproduced from Ordnance Survey material with the permission of Ordnance Survey on behalf of the Controller of Her Majesty's Stationery Office © Crown copyright. Unauthorised reproduction infringes Crown copyright and may lead to prosecution or civil proceedings. Welsh Assembly Government. License Number: 100017916. 2000

9643 Caerolau II

PRN 9643 NGR SN09891897

SITE NAME CAEROLAU II MAPSHEET SN01NE

SITE TYPE DEFENDED ENCLOSURE FORM Earthwork

PERIOD Prehistoric?; Iron Age? CONDITION C

SITE STATUS

DESCRIPTION

Caeroleu is a sub-rectangular defended enclosure occupying a moderately steep north-facing slope at 90m above sea level. On aerial photographs it shows as a cropmark ditch, with bowed north and south sides and a straight east end. The west end on 1955 photographs is obscured by hedgebanks - these have now been removed. There is an entrance midway along the east side. Internally the enclosure measures c. 80m E-W and 70m N-S. On the ground east and south sides are visible as a low bank up to 0.35m high, and a slight ditch is also visible on the east side. On other sides only very slight traces survive. The interior is slightly dished. In 2008 the site was under improved pasture. A cesspit for Caerolau cottage has been dug into the western edge of the interior.

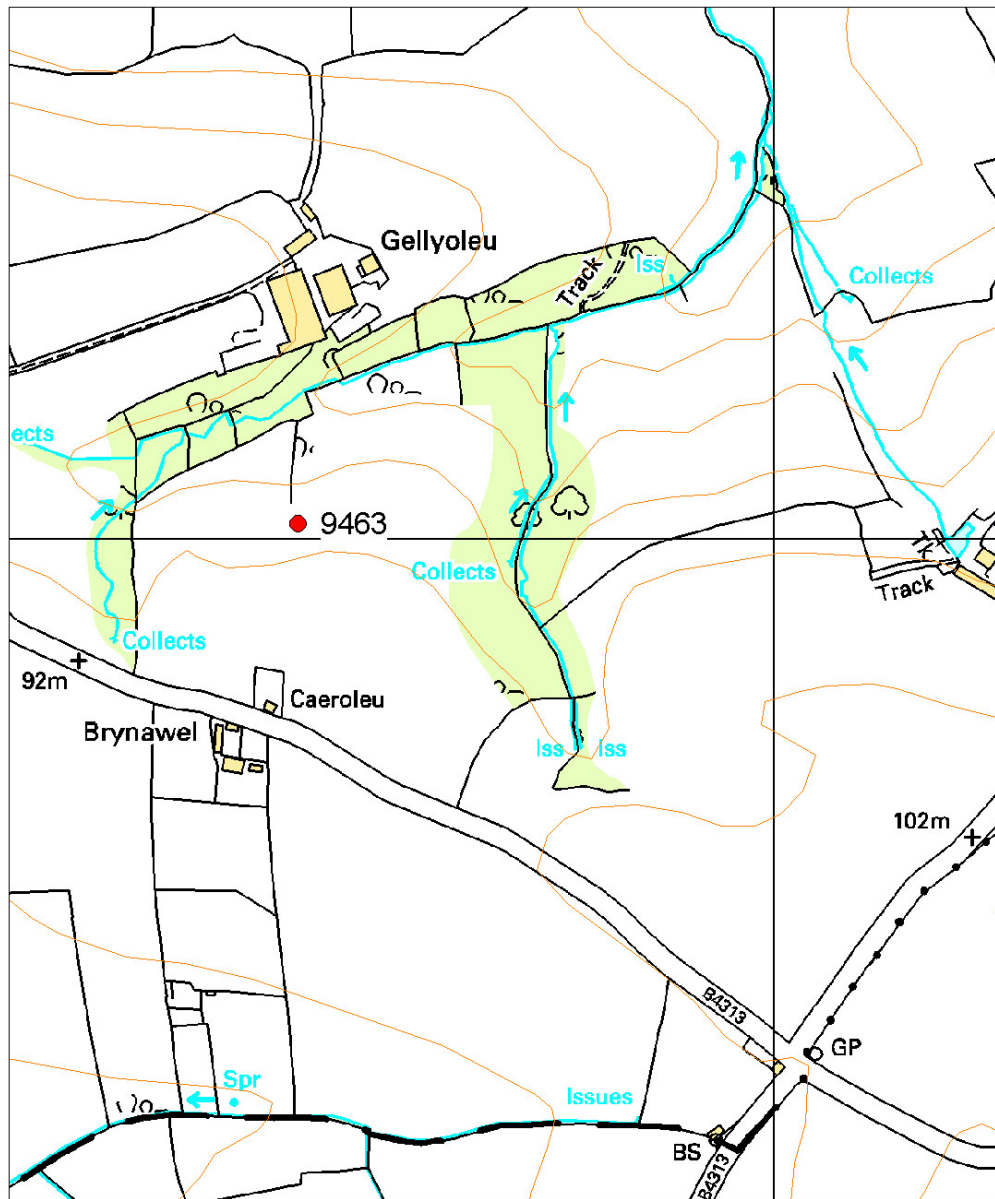
K Murphy and R Ramsey 5 February 2008



Looking NW over enclosure.



Aerial photograph – Meridian Airmaps 1955 200-210 24372-3



1:5000

This map is reproduced from Ordnance Survey material with the permission of Ordnance Survey on behalf of the Controller of Her Majesty's Stationery Office © Crown copyright. Unauthorised reproduction infringes Crown copyright and may lead to prosecution or civil proceedings. Welsh Assembly Government. License Number: 100017916. 2000

9644 Pen-Lan

PRN 9644 NGR SN09131918

SITE NAME PEN-LAN MAPSHEET SN01NE

SITE TYPE ENCLOSURE?; DEFENDED ENCLOSURE? FORM Cropmark

PERIOD Prehistoric?; Iron Age? CONDITION D

SITE STATUS

DESCRIPTION

Vertical aerial photographs taken in 1955 seem to show a circular earthwork enclosure defined by a spread parchmark bank with traces of a ditch on the west side. The enclosure measures c.40m diameter internally. Apart from very slight undulations there is no trace of this enclosure on the ground. In 2008 the site was under improved pasture.

As the 1955 photographs are the only evidence, this site must remain a possible enclosure or defended enclosure, not a certainty.

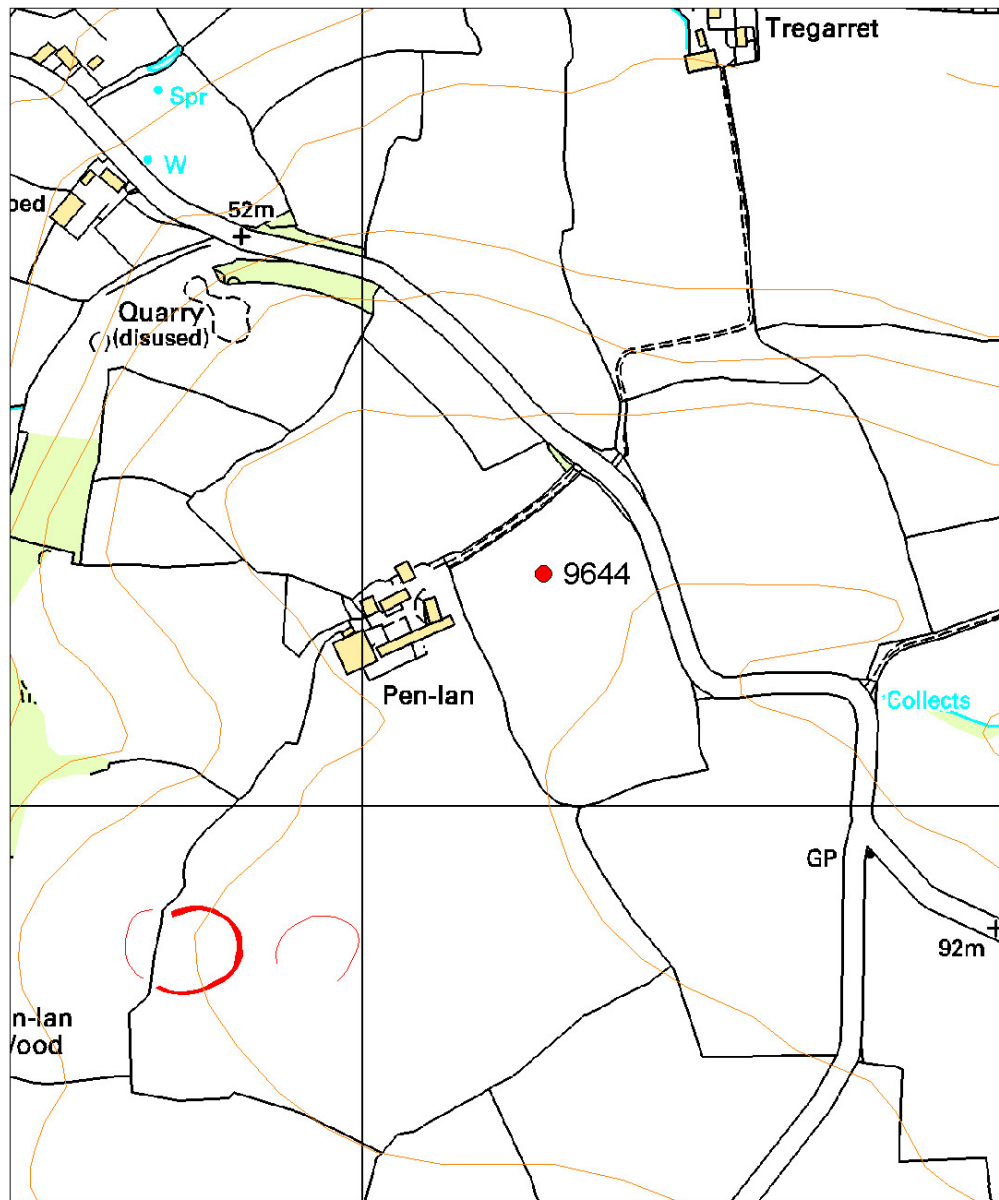
K Murphy and R Ramsey 5 February 2008



Looking N over site of cropmark.



Aerial photograph – Meridian Airmaps 1955 200-210 24372.



1:5000

This map is reproduced from Ordnance Survey material with the permission of Ordnance Survey on behalf of the Controller of Her Majesty's Stationery Office © Crown copyright. Unauthorised reproduction infringes Crown copyright and may lead to prosecution or civil proceedings. Welsh Assembly Government. License Number: 100017916. 2000

11380 Caeroleu I

PRN 11380 NGR SN09901877

SITE NAME CAEROLEU I MAPSHEET SN01NE

SITE TYPE ENCLOSURE?; DEFENDED ENCLOSURE? FORM Earthwork

SITE STATUS

DESCRIPTION

Aerial photographs show what seems to be the parchmark of a curving length of bank c.60m long. On the ground it shows as a curving bank, c. 30m long and up to 0.35m high, perhaps the east side of a roughly circular enclosure. There are hints of low earthworks defining the west side of the enclosure, but these are very vague. In 2008 the site was under improved pasture. It lies on a gentle north-facing slope at 100m above sea level.

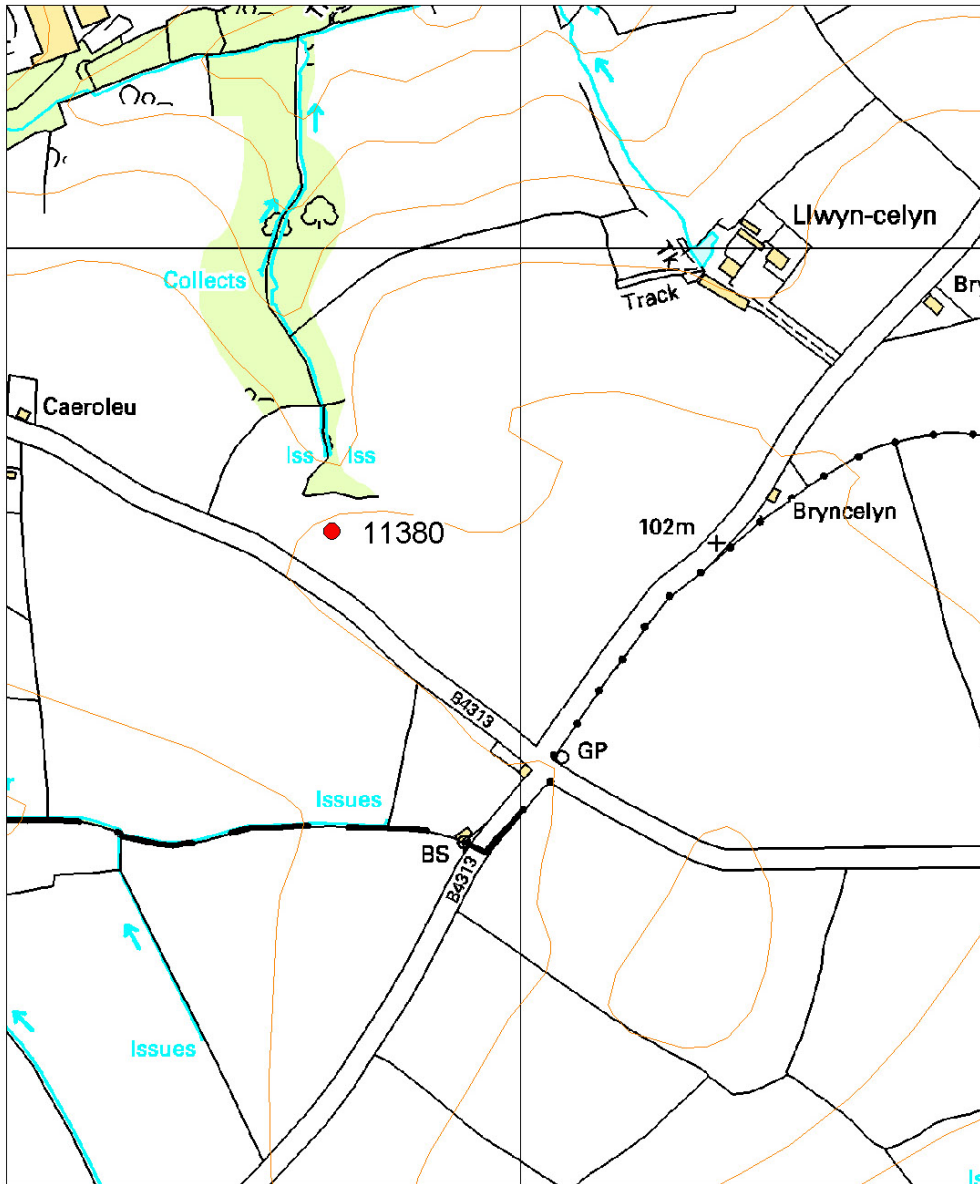
K Murphy and R Ramsey 5 February 2008.



Looking NE over site.



Aerial photograph of 11380. RCAHMW Crown Copyright © reference DI2007_1721.



1:5000

This map is reproduced from Ordnance Survey material with the permission of Ordnance Survey on behalf of the Controller of Her Majesty's Stationery Office © Crown copyright. Unauthorised reproduction infringes Crown copyright and may lead to prosecution or civil proceedings. Welsh Assembly Government. License Number: 100017916. 2000

35771 Pen-Lan

PRN 35771 NGR SN08861889

SITE NAME PEN-LAN I MAPSHEET SN01NE

SITE TYPE DEFENDED ENCLOSURE FORM Earthwork

PERIOD Prehistoric?; Iron Age? CONDITION C

SITE STATUS

DESCRIPTION

This is a univallate oval enclosure occupying a west-facing slope at 80m above sea level. On the ground it is defined by a bank up to 0.5m with traces of a ditch. These are best preserved on the north side. A north-south hedgebank cuts across the western side of the enclosure. Part of the enclosure lies in a field to the west, and here there is no trace of it. Aerial photographs show the site as a cropmark ditch with parchmarks of a bank and possible counterscarp. The enclosure measures 80m E-W and 40m N-S internally. The position of the entrance is unknown. In 2008 the site was under improved pasture.

The association of this site with PRN 35772 immediately to the east is uncertain.

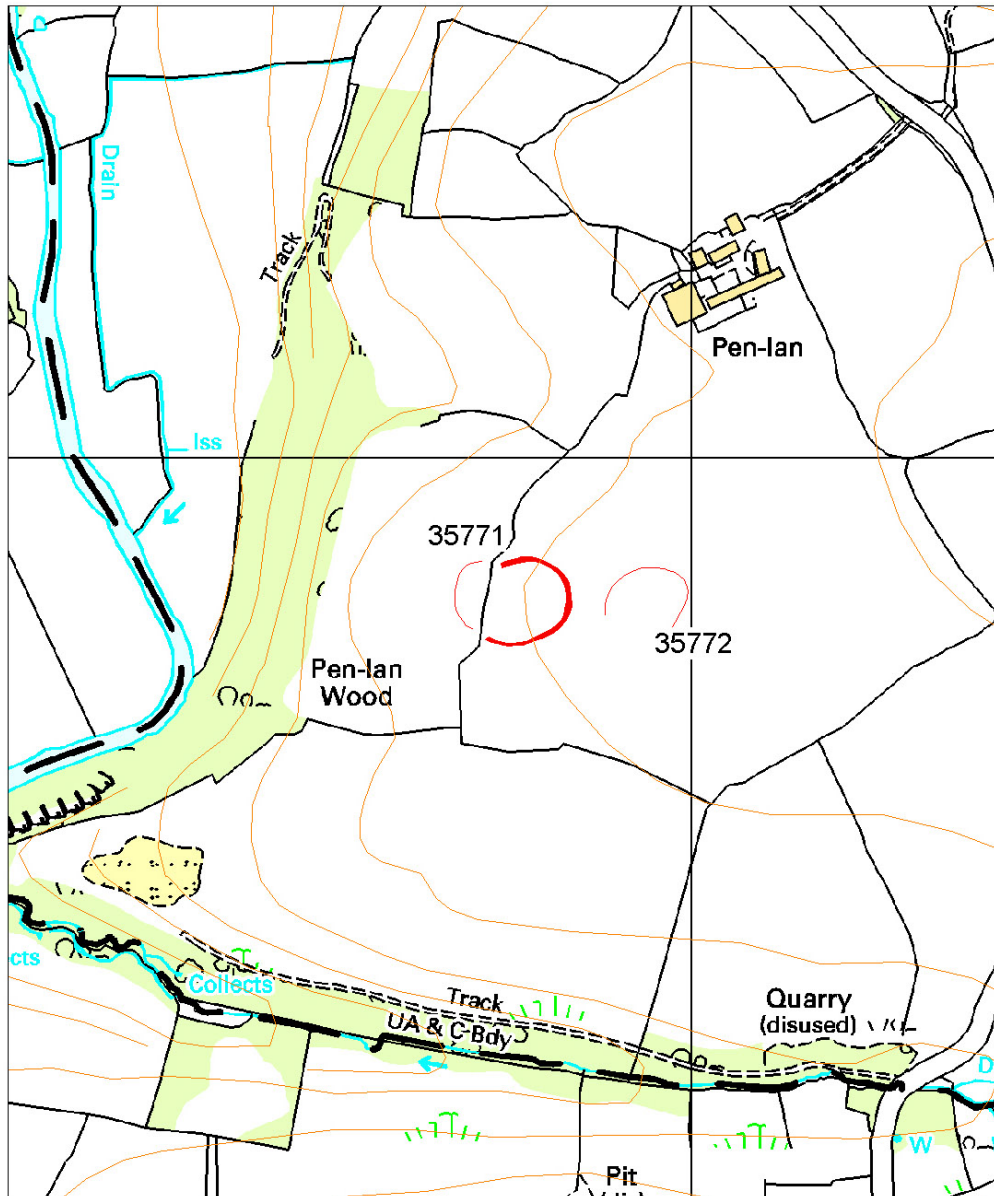
K Murphy and R Ramsey 5 February 2008



Looking SW over enclosure.



Aerial photograph of 35771. RCAHMW Crown Copyright © reference DI2006_1524.



1:5000

This map is reproduced from Ordnance Survey material with the permission of Ordnance Survey on behalf of the Controller of Her Majesty's Stationery Office © Crown copyright. Unauthorised reproduction infringes Crown copyright and may lead to prosecution or civil proceedings. Welsh Assembly Government. License Number: 100017916. 2000

35772 Pen-Lan II

PRN 35772 NGR SN08961888

SITE NAME PEN-LAN II MAPSHEET SN01NE

SITE TYPE DEFENDED ENCLOSURE FORM Earthwork

PERIOD Prehistoric?; Iron Age? CONDITION C

SITE STATUS

DESCRIPTION

A slight earthwork enclosure, sub-circular in shape, approximately 45m diameter internally, lying on a gentle west-facing slope at a little over 80m above sea level. It is defined by a 0.35m high bank and by a distinct dished interior. The earthwork bank is more complex on the southwest side, probably in the location of the entrance. There are indications of an outer bank to the north and possible other earthworks between this enclosure and enclosure PRN 35771 that lies immediately to the west. The relationship between this enclosure and PRN 35771 is unclear. In 2008 the site was under improved pasture.

K Murphy and R Ramsey 5 February 2008



Looking N over earthwork enclosure.



Map based on the Ordnance Survey 1:50,000 map showing the distribution of sites in 10 km grid square SN02.

This map is reproduced from Ordnance Survey material with the permission of Ordnance Survey on behalf of the Controller of Her Majesty's Stationery Office © Crown copyright. Unauthorised reproduction infringes Crown copyright and may lead to prosecution or civil proceedings. Welsh Assembly Government. License Number: 100017916. 2000

1416 Penquarry Ring

PRN 1416 NGR SN09982080

SITE NAME PENQUARRY RING MAPSHEET SN02SE

SITE TYPE DEFENDED ENCLOSURE FORM Earthwork

PERIOD Prehistoric?; Iron Age? CONDITION C

SITE STATUS

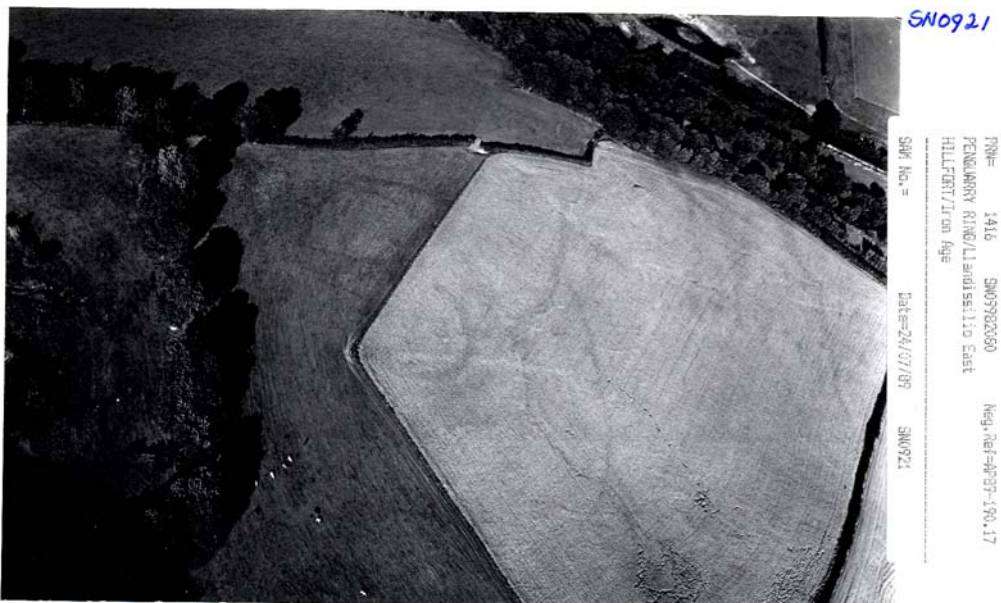
DESCRIPTION

Penquarry Ring is a circular defended enclosure with a concentric annexe to the south side only. It occupies a north-facing slope at c.50m above sea level. Immediately to the north of the site the land falls away steeply to a stream 25m below, forming a natural defence to the site on this side. It is best seen on aerial photographs where it shows as a cropmark. A circular cropmark ditch with an internal diameter of c.44m defines the inner enclosure. There is an east-facing entrance. The ditch to the annexe curves around the inner enclosure to the south and east approximately 45m distant from it. At the northeast corner this annexe ditch turns west and runs towards the entrance of the inner enclosure, possibly acting as a flanking ditch to an entrance track. There is, however, a suggestion that this 'flanking' ditch forms part of a separate rectangular enclosure. On the ground the inner enclosure is marked by a dished hollow, up to 0.25m deep and a very slight bank with traces of a ditch on the south side. There is no evidence of the annexe defences on the ground. In 2008, the site was under improved pasture.

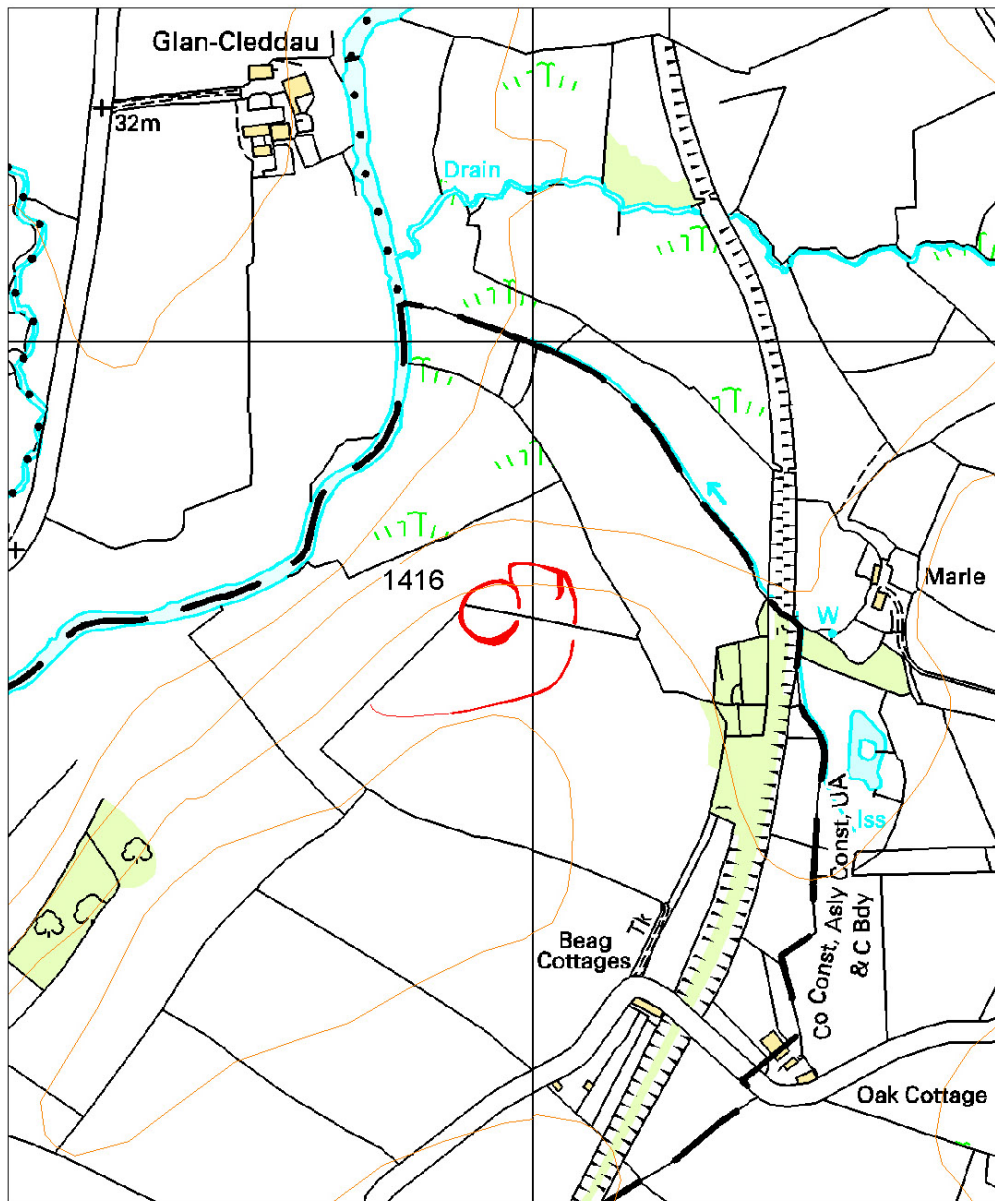
K Murphy and R Ramsey 5 February 2008



Looking NE over enclosure.



Aerial photograph of 1416. DAT AP89-190.17.



1:5000

This map is reproduced from Ordnance Survey material with the permission of Ordnance Survey on behalf of the Controller of Her Majesty's Stationery Office © Crown copyright. Unauthorised reproduction infringes Crown copyright and may lead to prosecution or civil proceedings. Welsh Assembly Government. License Number: 100017916. 2000

35765 Llandre

PRN 35765 NGR SN09462015

SITE NAME LLANDRE MAPSHEET SN02SE

SITE TYPE ENCLOSURE?; DEFENDED ENCLOSURE? FORM Cropmark

PERIOD Prehistoric?; Iron Age? CONDITION D

SITE STATUS

DESCRIPTION

Faint cropmark ditches are visible on aerial photographs possible defining an oval enclosure 100m south of the Llandre moated homestead/ringwork (PRN 1413). The site lies on gentle south-facing slope at c.50m above sea level. The north, northeast and west sides of an enclosure measuring c.130m SW-NE by c.60m NW-SE are visible on photographs. There is no trace of the southeast side. In 2008 the site was under improved pasture. There is no trace of this site on the ground.

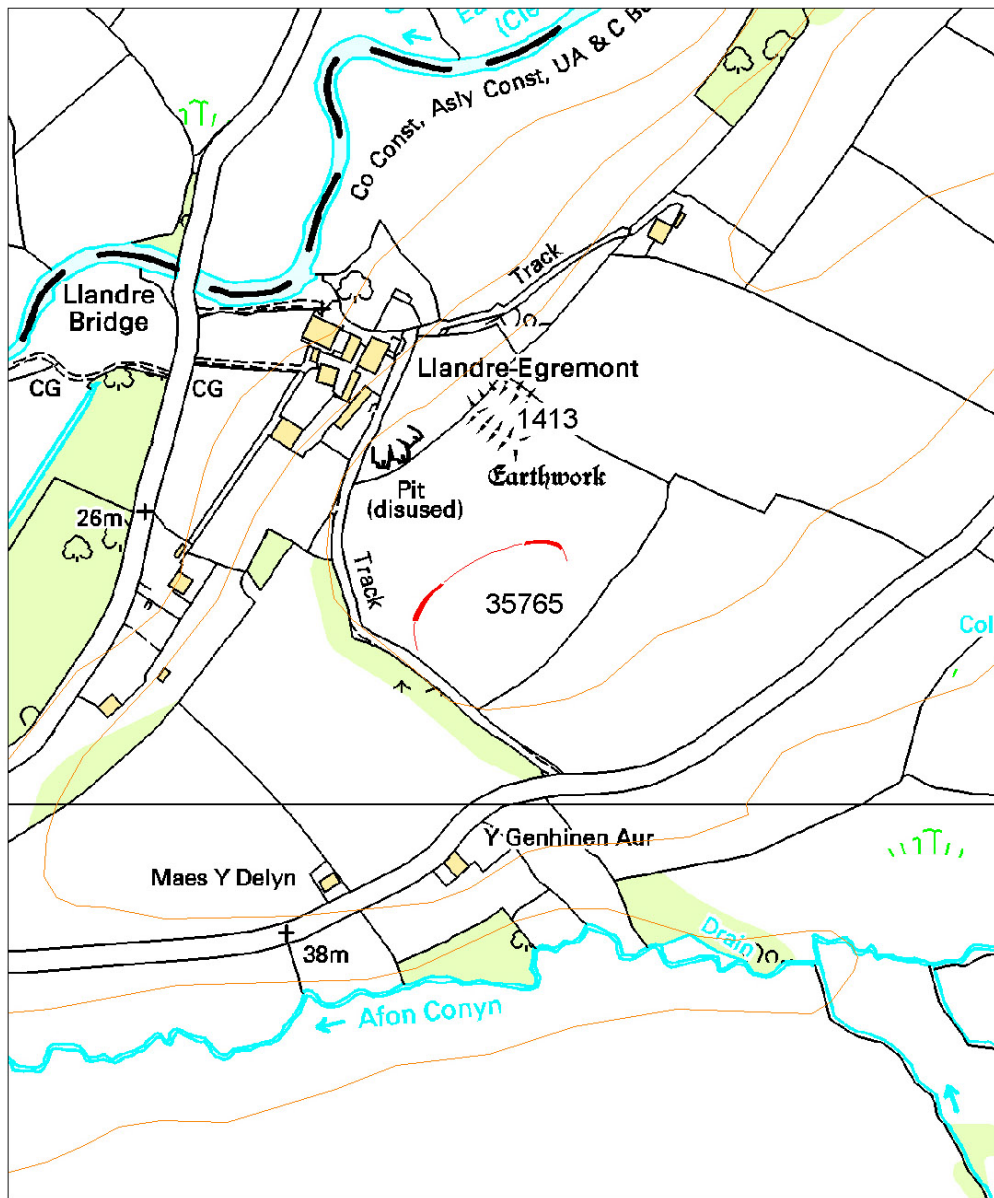
K Murphy and R Ramsey 5 February 2008



Looking N over cropmark site.



Aerial photograph of 35765. DAT AP88-42.8.



1:5000

This map is reproduced from Ordnance Survey material with the permission of Ordnance Survey on behalf of the Controller of Her Majesty's Stationery Office © Crown copyright. Unauthorised reproduction infringes Crown copyright and may lead to prosecution or civil proceedings. Welsh Assembly Government. License Number: 100017916. 2000



Map based on the Ordnance Survey 1:50,000 map showing the distribution of sites in 10 km grid square SN10.

This map is reproduced from Ordnance Survey material with the permission of Ordnance Survey on behalf of the Controller of Her Majesty's Stationery Office © Crown copyright. Unauthorised reproduction infringes Crown copyright and may lead to prosecution or civil proceedings. Welsh Assembly Government. License Number: 100017916. 2000

3665 Top Castle

PRN 3665 NGR SN19450773

SITE NAME TOP CASTLE MAPSHEET SN10NE

SITE TYPE DEFENDED ENCLOSURE FORM Earthwork

PERIOD Iron Age CONDITION C

SITE STATUS SAM

DESCRIPTION

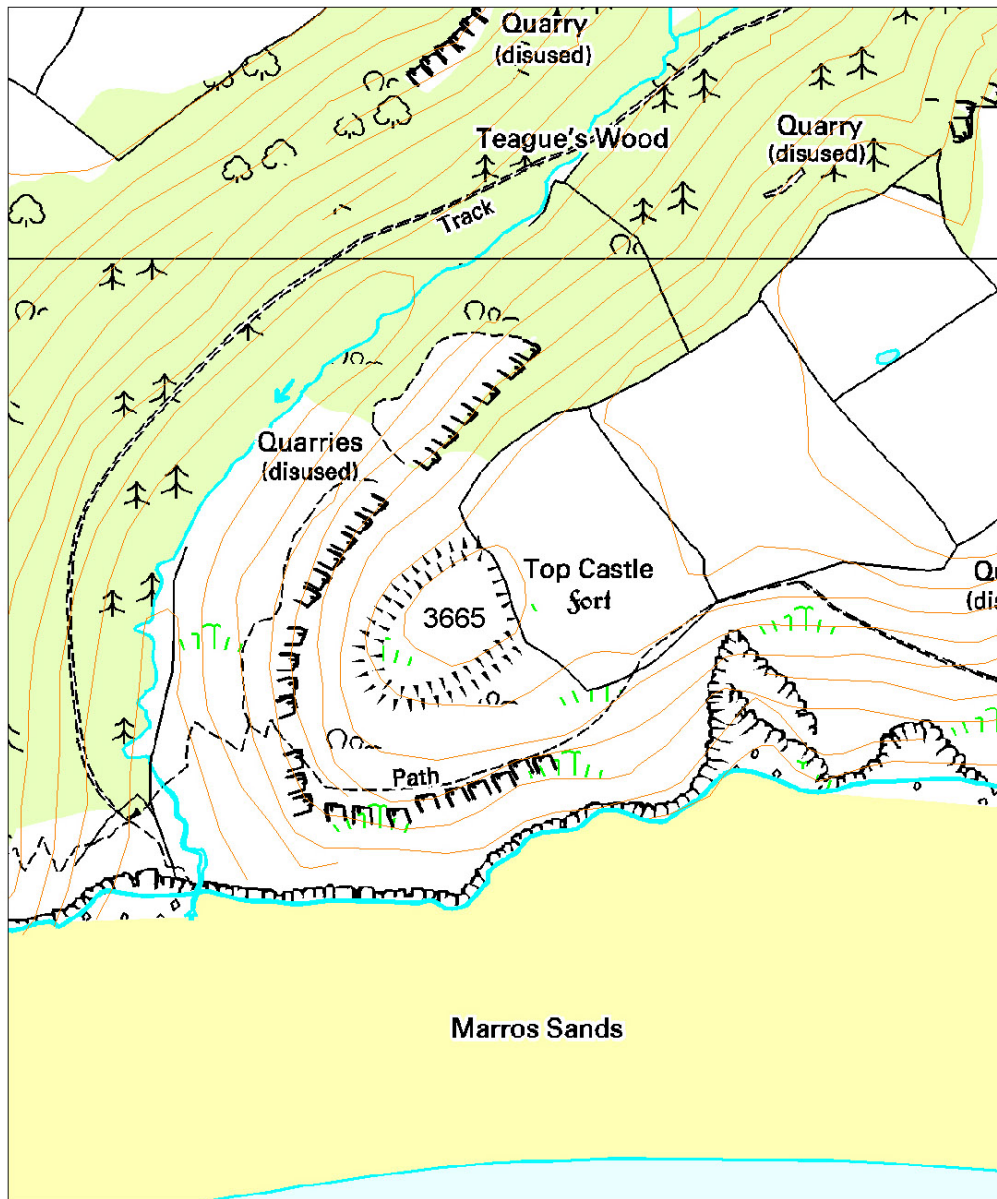
A sub-circular enclosure situated on the summit of a high cliff, at some 100m above sea level, overlooking Marros sands and the sea. Steep natural slopes surround the enclosure to the north, west and south. The ground to the east slopes gently away before rising again to 125m above sea level at Marros Beacon. It is defended by a single bank c.0.25m high internally but 2.5m high externally, and a ditch that is 0.6m deep on the east, but is less clear on the other sides. The hedge bank on the east may be a reused outer bank. To the southwest of the enclosure there appears to be a scarped terrace. A break in the defences on the northeast may be the original entrance, however, it is now used for vehicular access.

The whole site is covered in varying degrees of rough pasture, bracken, bramble and gorse.

F Murphy March 2008 - compiled from several sources



Aerial photograph of 3665. RCAHMW Crown Copyright © reference DI2007_1669.



1:5000

This map is reproduced from Ordnance Survey material with the permission of Ordnance Survey on behalf of the Controller of Her Majesty's Stationery Office © Crown copyright. Unauthorised reproduction infringes Crown copyright and may lead to prosecution or civil proceedings. Welsh Assembly Government. License Number: 100017916. 2000

3666 The Castle

PRN 3666 NGR SN18420853

SITE NAME CASTLE THE;MARROS CASTLE;WOODREEFE MAPSHEET SN10NE

SITE TYPE PROMONTORY FORT FORM Earthwork

PERIOD Iron Age CONDITION B

SITE STATUS SAM

DESCRIPTION

This triangular shaped enclosure was formed by constructing an earthen bank across a shallow point of land, at some 70m above sea level, immediately above the small stream called Cwm Waungron. The bank, that defends the east side of the enclosure, appears to be constructed from rubble stone and earth, is 6-7m wide at its base and up to 2.5m high, with a flattish top 1.5m wide. The outer face is near vertical and overlooks a shallow, flat-bottomed ditch c.6.0m wide with an average depth of 1.5m, deepening to c.3.0m at its northern end where it runs out into the gorge.

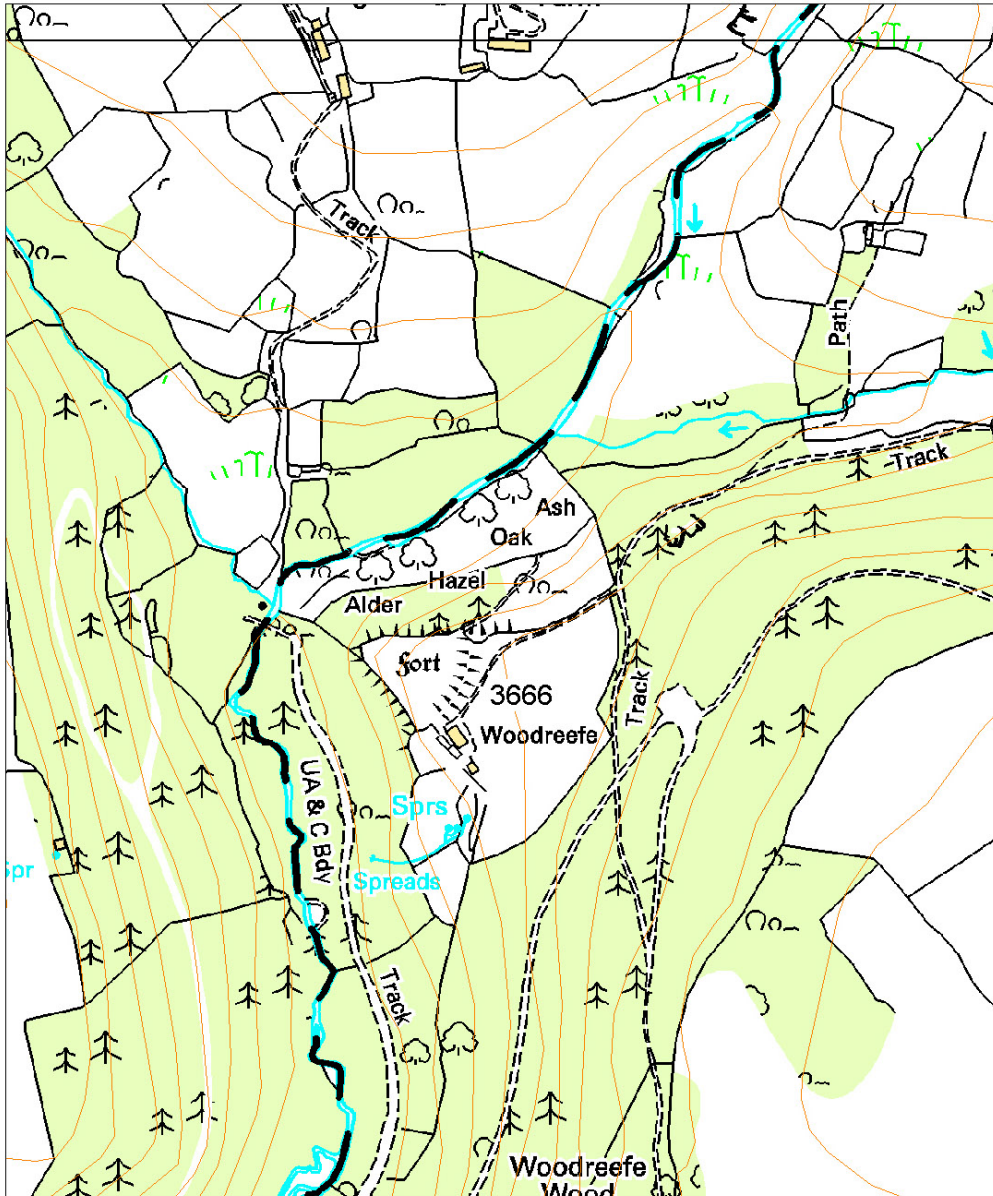
There is a modern breach of the bank towards the southern end that may be on the line of the original entrance, but the RCAHM and the Ordnance Survey report that the entrance can be found at the northern end of the rampart, where the rampart is nicely rounded off.

No internal features are visible, and the interior is of semi-improved pasture. To the north and south steep slopes drop down to the stream through scrub woodland and a coniferous plantation respectively.

F Murphy March 2008 - compiled from several sources



Aerial photograph of 3666. Reference DAT AP93-2.18.



1:5000

This map is reproduced from Ordnance Survey material with the permission of Ordnance Survey on behalf of the Controller of Her Majesty's Stationery Office © Crown copyright. Unauthorised reproduction infringes Crown copyright and may lead to prosecution or civil proceedings. Welsh Assembly Government. License Number: 100017916. 2000

7625 Parc yr Eglwys

PRN 7625 NGR SN19280834

SITE NAME PARC YR EGLWYS; GIANTS GRAVES THE; RING THE MAPSHEET SN10NE

SITE TYPE DEFENDED ENCLOSURE FORM Earthwork

PERIOD Prehistoric?; Iron Age? CONDITION C

SITE STATUS

DESCRIPTION

A multivallate, sub-circular enclosure situated at 130m above sea level on the edge of a southeast facing, steep slope that drops to a stream below. It lies within a field called 'Parc yr eglwys'. The site was excavated in 1906 by G.C.T. Treherne who claimed to have found "traces of three, if not four, earthen ramparts surrounding a roughly circular space". Finds included remains of a rough stone floor, much burnt material, several stone rubbers, two flat water-worn stones, roughly circular and about 2ft in diameter "suggesting the basis of some superstructure", a fragment of worked flint, and a piece of black Romano-British pottery of 3rd-4th century. Later reports by the Ordnance Survey disagree with Treherne stating that the earthwork is visibly univallate, and that the situation is an unlikely one for an Iron Age homestead.

However, the site visit during 2007 identified at least two quite widely spaced defensive banks separated by a ditch on the eastern side of the site. Here the defences have survived because the ground slopes away which makes it much more difficult to plough. Elsewhere the defences, if they existed, have been ploughed away. On the ground the two defensive banks have the appearance of long mounds (described as "giants graves" in folklore) that curve, in discrete lengths, around to the east and southeast. The circular interior measures approximately 65m in diameter, and appears as a concave hollow. The Ordnance Survey reported a possible entrance on the southeast but no evidence of this was visible on the ground in 2007. The field is still ploughed occasionally and large stones have been exposed in the fabric of the outer defensive banks. The site is situated within a field under pasture.

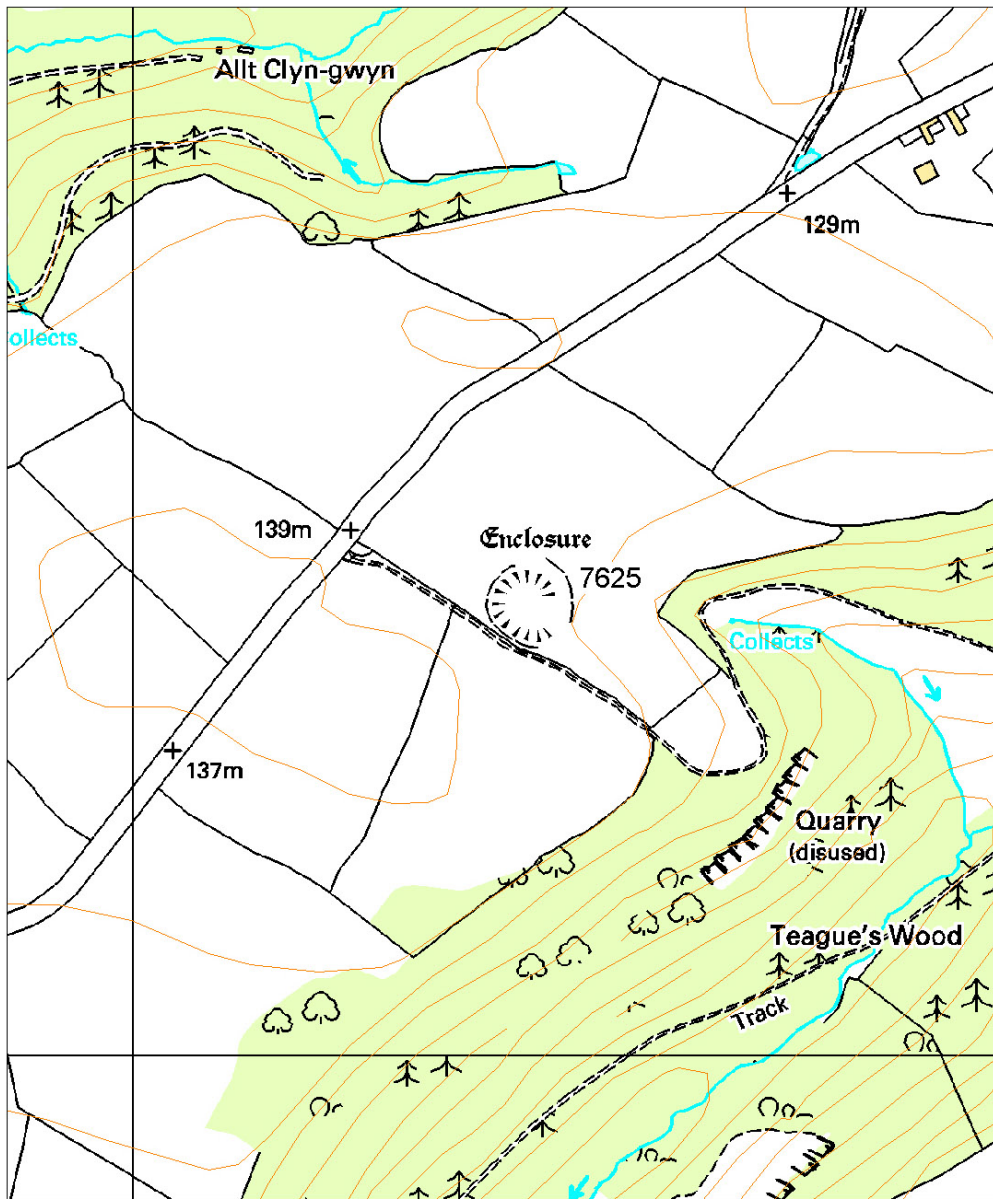
F Murphy and R Ramsey 26 February 2008



Facing SSW showing outer defences of circular enclosure



Aerial photograph of 7625. RCAHMW Crown Copyright © reference DI2007_1670.



1:5000

This map is reproduced from Ordnance Survey material with the permission of Ordnance Survey on behalf of the Controller of Her Majesty's Stationery Office © Crown copyright. Unauthorised reproduction infringes Crown copyright and may lead to prosecution or civil proceedings. Welsh Assembly Government. License Number: 100017916. 2000

11463 Woodreefe East

PRN 11463 NGR SN18810846

SITE NAME WOODREEFE(EAST) MAPSHEET SN10NE

SITE TYPE ENCLOSURE? FORM Cropmark

PERIOD Iron Age?; Roman? CONDITION D

SITE STATUS

DESCRIPTION

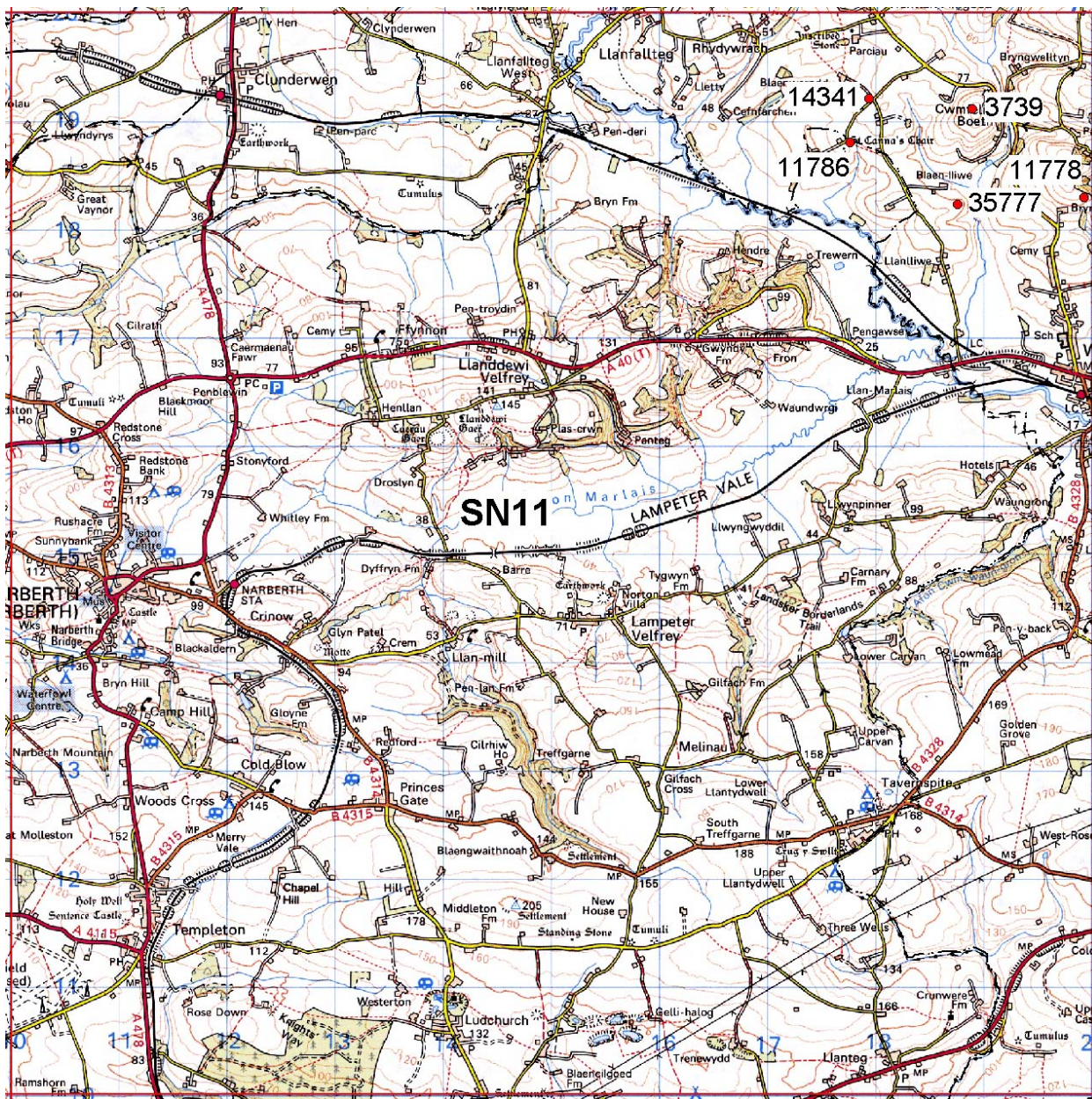
A rectangular enclosure identified from aerial survey, situated on a gentle north facing hillslope at 130m above sea level. The cropmark measures approximately 30m by 20m. No trace of any earthwork was visible on the ground in 2007. The site is located within a field of pasture.

F Murphy and R Ramsey 26 February 2008



Looking approx. S across field of cropmark enclosure

This map is reproduced from Ordnance Survey material with the permission of Ordnance Survey on behalf of the Controller of Her Majesty's Stationery Office © Crown copyright. Unauthorised reproduction infringes Crown copyright and may lead to prosecution or civil proceedings. Welsh Assembly Government. License Number: 100017916. 2000



Map based on the Ordnance Survey 1:50,000 map showing the distribution of sites in 10 km grid square SN11.

This map is reproduced from Ordnance Survey material with the permission of Ordnance Survey on behalf of the Controller of Her Majesty's Stationery Office © Crown copyright. Unauthorised reproduction infringes Crown copyright and may lead to prosecution or civil proceedings. Welsh Assembly Government. License Number: 100017916. 2000

3739 Drefach

PRN 3739 NGR SN18881911

SITE NAME DREFACH;CWM-FELIN BOETH MAPSHEET SN11NE

SITE TYPE DEFENDED ENCLOSURE FORM Earthwork

PERIOD Prehistoric?; Iron Age? CONDITION D

SITE STATUS

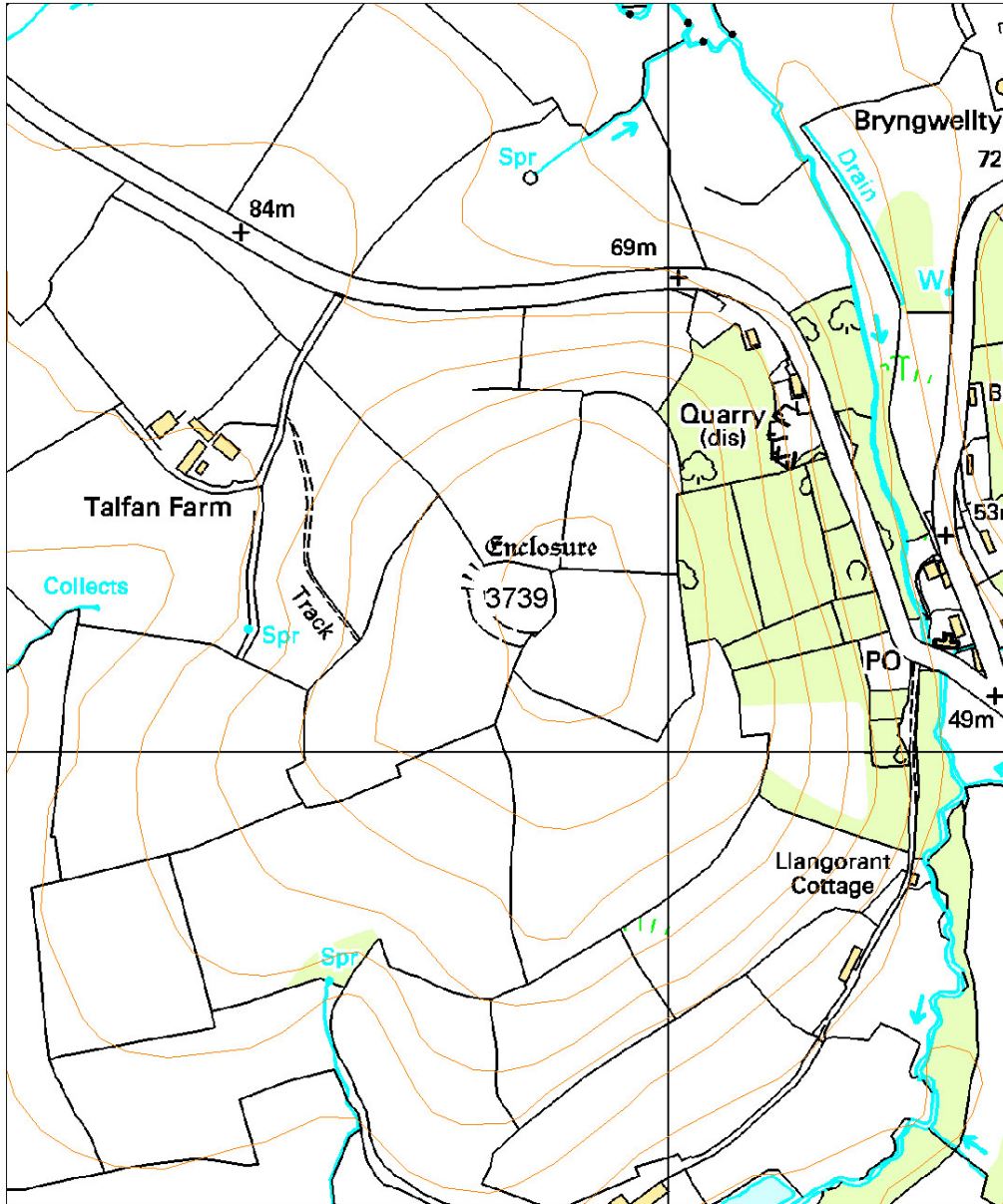
DESCRIPTION

This is a small, oval, univallate, defended enclosure occupying the western side of a rounded hilltop at 120m above sea level. The northern and eastern sides of the enclosure are overlain by hedgebanks, a line of curving shallow ditch, up to 0.4m deep marks the western side of the enclosure. Overall the enclosure measures c. 45m E-W and 40m N-S. There is no evidence for an entrance. In 2007, the site was under improved pasture.

K Murphy and R Ramsey 4 February 2008



Looking NE across site of enclosure.



1:5000

This map is reproduced from Ordnance Survey material with the permission of Ordnance Survey on behalf of the Controller of Her Majesty's Stationery Office © Crown copyright. Unauthorised reproduction infringes Crown copyright and may lead to prosecution or civil proceedings. Welsh Assembly Government. License Number: 100017916. 2000

11786 Llangan Church

PRN 11786 NGR SN17751865

SITE NAME LLANGAN PARISH CHURCH IMAPSHEET SN11NE

SITE TYPE DEFENDED ENCLOSURE FORM Cropmark

PERIOD Iron Age CONDITION D

SITE STATUS SAM

DESCRIPTION

Aerial photographs and a geophysical survey conducted in 2007 show a complex cropmark defended enclosure. The site lies on a gentle south-facing slope at between 50m and 65m above sea level. In 2007, the site was under improved pasture.

The redundant parish church lies in a sub-rectangular churchyard to the northwest of the inner cropmark enclosure. This inner enclosure is sub-circular, c.35m diameter internally with an east-facing entrance approached by a ditched trackway. There seems to be a sub-rectangular building, perhaps of two phases, in the south side of the enclosure. A trivallate concentric annexe surrounds the inner enclosure, measuring c.80m internally east-west. Its north-south dimensions are difficult to estimate, but the geophysical survey seems to show one of the ditches curving round to the north some distance away. Here, in the field to the north of the church, are a series of rectilinear cropmarks (PRN 12222) that are probably related to the enclosure. On the south side of the annexe discrete geophysical anomalies indicate hearths and furnaces.

There is no trace of the site on the surface to the south of the church, but to the north very slight earthworks are visible - these, however, form no coherent pattern.

Overall this seems to be an Iron Age enclosure reused in the early medieval and medieval periods, both in secular and ecclesiastical terms.

K Murphy February 2008



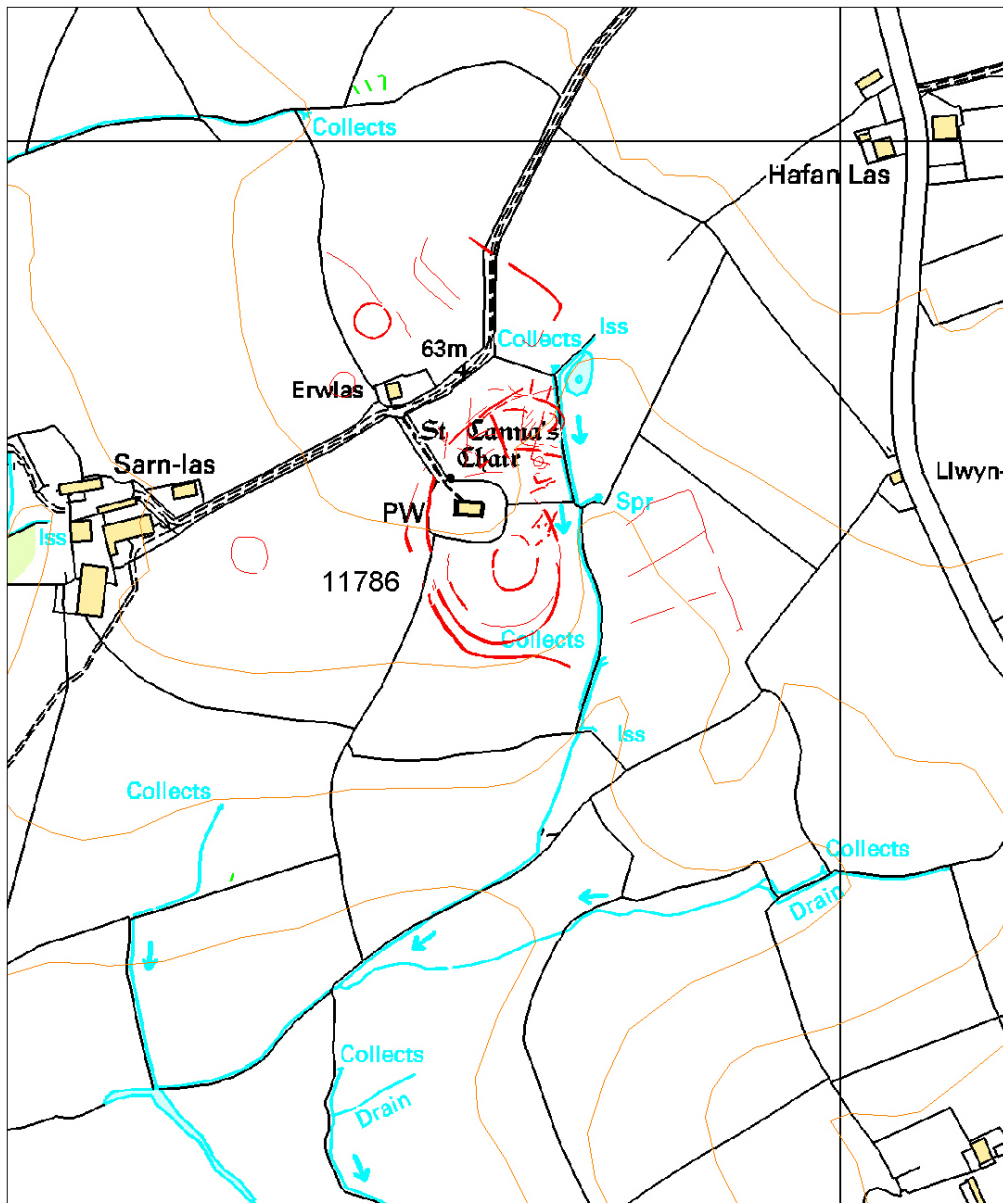
Looking N over site of cropmark



Aerial photograph of 11786. RCAHMW Crown Copyright © reference DI2007_1674.



Geophysical Survey of Llangan Church 2007.



1:5000

This map is reproduced from Ordnance Survey material with the permission of Ordnance Survey on behalf of the Controller of Her Majesty's Stationery Office © Crown copyright. Unauthorised reproduction infringes Crown copyright and may lead to prosecution or civil proceedings. Welsh Assembly Government. License Number: 100017916. 2000

11778 Bryn Banc

PRN 11778 NGR SN19911829

SITE NAME BRYN-BANC MAPSHEET SN11NE

SITE TYPE DEFENDED ENCLOSURE FORM Cropmark

PERIOD Prehistoric?; Iron Age? CONDITION D

SITE STATUS

DESCRIPTION

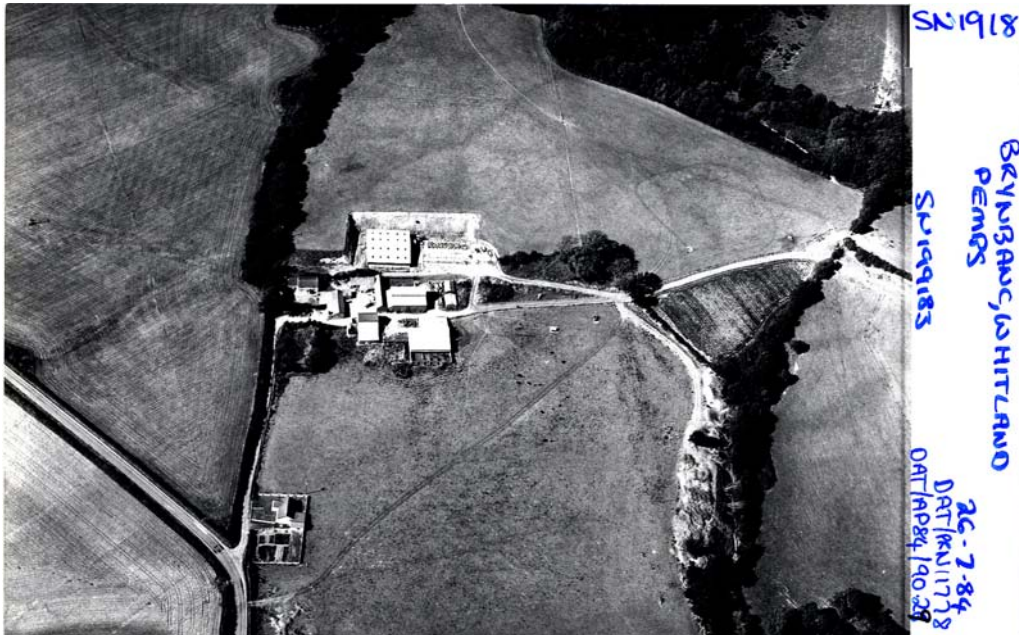
Bryn-banc is a sub-rectangular, cropmark defended enclosure lying on a gentle southeast-facing slope at 100m above sea level. The ditch shows as a narrow cropmark, perhaps less than 2m across, which is much narrower than other defended enclosures in southwest Wales. There is a hint on some aerial photographs of bivallate defences on the west side and northeast corner of the enclosure. There is a possible entrance at the east end of the enclosure. Internally the enclosure measures c.75m E-W by 55m N-S. A rectangular splodge towards the southeast corner of the interior may mark the site of a building.

On the ground there is a hint of a bank along the south and west sides of the enclosure. The interior is slightly dished, as though terraced into the slope. The owner, Mrs Hall, stated that the internal splodge is visible in drought conditions. In 2007, the site was under improved pasture.

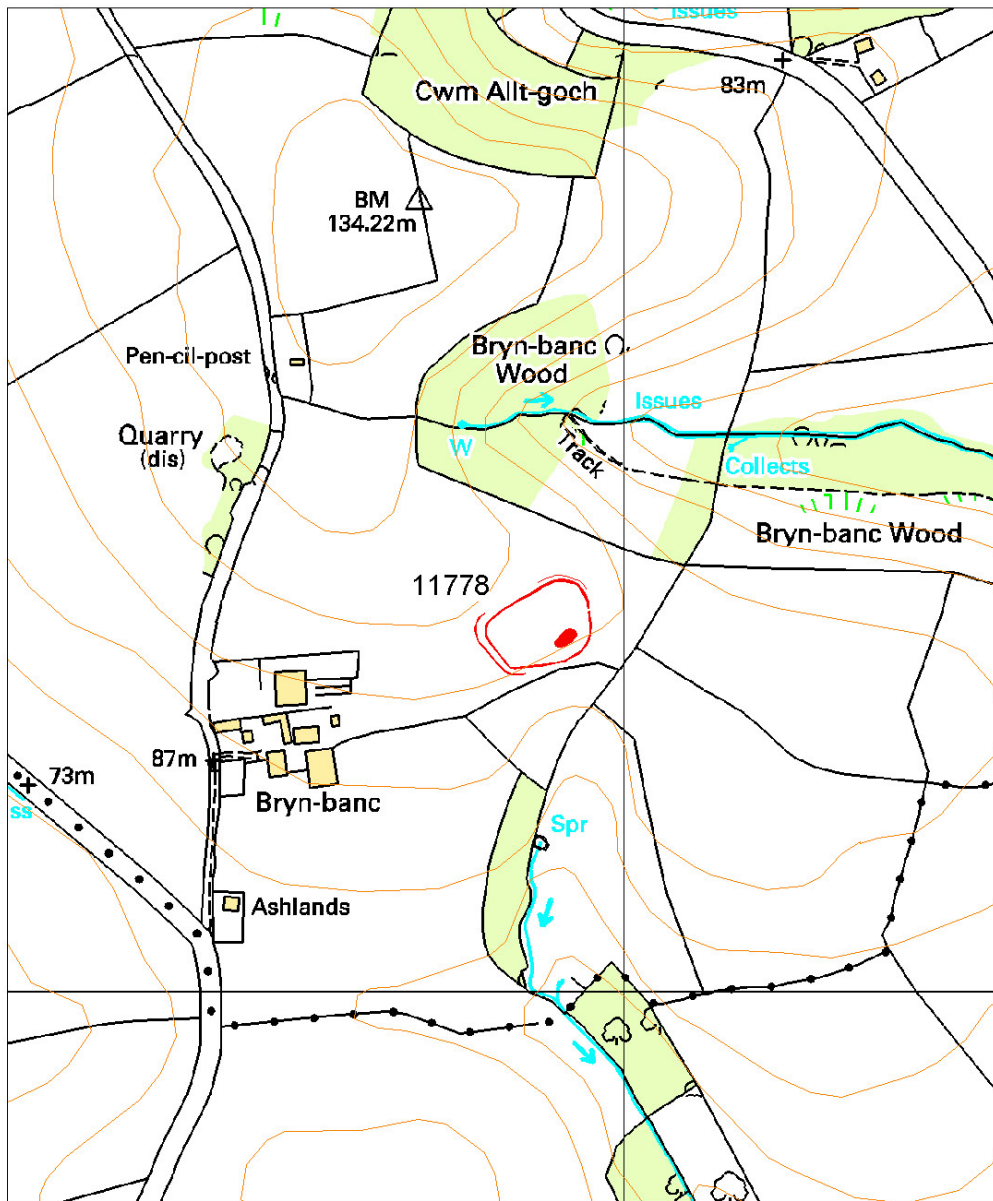
K Murphy and R Ramsey 28 November 2007



Looking NW over site of enclosure.



Aerial photograph of 11778. Reference DAT AP84-90.28.



1:5000

This map is reproduced from Ordnance Survey material with the permission of Ordnance Survey on behalf of the Controller of Her Majesty's Stationery Office © Crown copyright. Unauthorised reproduction infringes Crown copyright and may lead to prosecution or civil proceedings. Welsh Assembly Government. License Number: 100017916. 2000

14341 Llangan VI

PRN 14341 NGR SN17921920

SITE NAME LLANGAN VI MAPSHEET SN11NE

SITE TYPE DEFENDED ENCLOSURE FORM Cropmark

PERIOD Iron Age?;Prehistoric? CONDITION D

SITE STATUS

DESCRIPTION

This is an oval or egg-shaped, cropmark, univallate enclosure lying on a very gentle south-facing slope at 65m above sea level. An E-W lane bisects the site. The cropmark ditches defining the enclosure show best on the east and west sides to the north of the lane. The ditches to the south of the lane and on the north side of the enclosure can only just be traced on the ground. There is a possible entrance on the east side. The enclosure measures c.70m N-S and 45m E-W. On the ground the site is marked by a barely perceptible depression. In 2007, the site was under improved pasture.

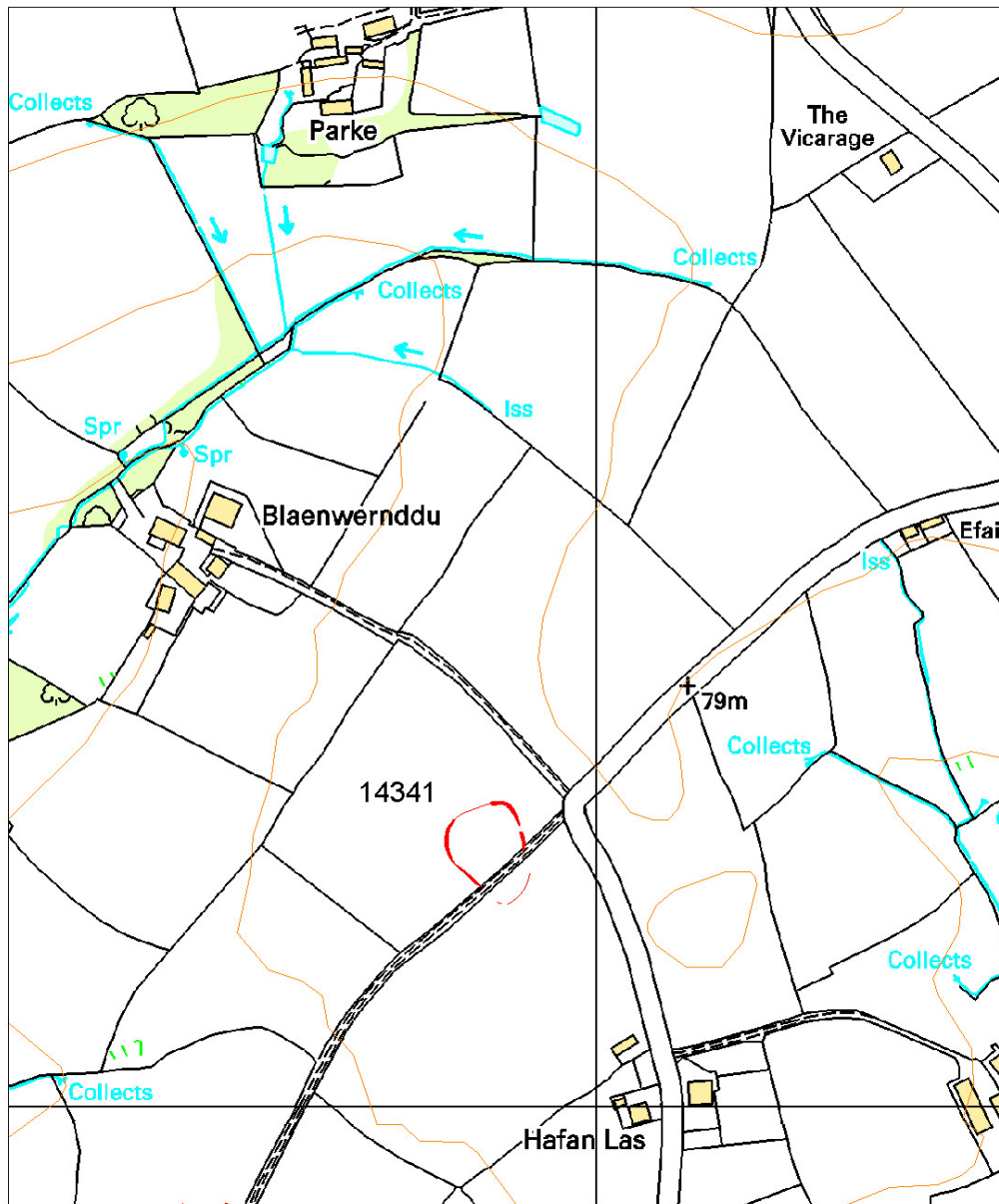
K Murphy and R Ramsey 4 February 2008



Looking SW over cropmark enclosure.



Aerial photograph of 14341. Reference DAT AP89-172.9.



1:5000

This map is reproduced from Ordnance Survey material with the permission of Ordnance Survey on behalf of the Controller of Her Majesty's Stationery Office © Crown copyright. Unauthorised reproduction infringes Crown copyright and may lead to prosecution or civil proceedings. Welsh Assembly Government. License Number: 100017916. 2000

35777 Blaen-Lliwe

PRN 35777 NGR SN18741823

SITE NAME BLAEN-LLIWE MAPSHEET SN11NE

SITE TYPE DEFENDED ENCLOSURE FORM Cropmark

PERIOD Iron Age CONDITION D

SITE STATUS

DESCRIPTION

Blaen-Lliwe is a fine example of a circular, univallate defended enclosure with a concentric annexe identified from aerial survey. The enclosure straddles an E-W spur of land at 50m above sea level that slopes down to the east. The inner circular enclosure measures c.60m in diameter, and the outer concentric annex has a diameter of c.200m. An approaching ditch/bank track entrance, that is clearly visible on the aerial photograph, is on the southeast side of the site. In 2007 there was no trace of any earthwork on the ground. A hedge bank bisects the inner enclosure, which is discernable on the ground as a circular hollow depression, although this may be a result of the farmer burying sheep here. The site is situated within a field of pasture.

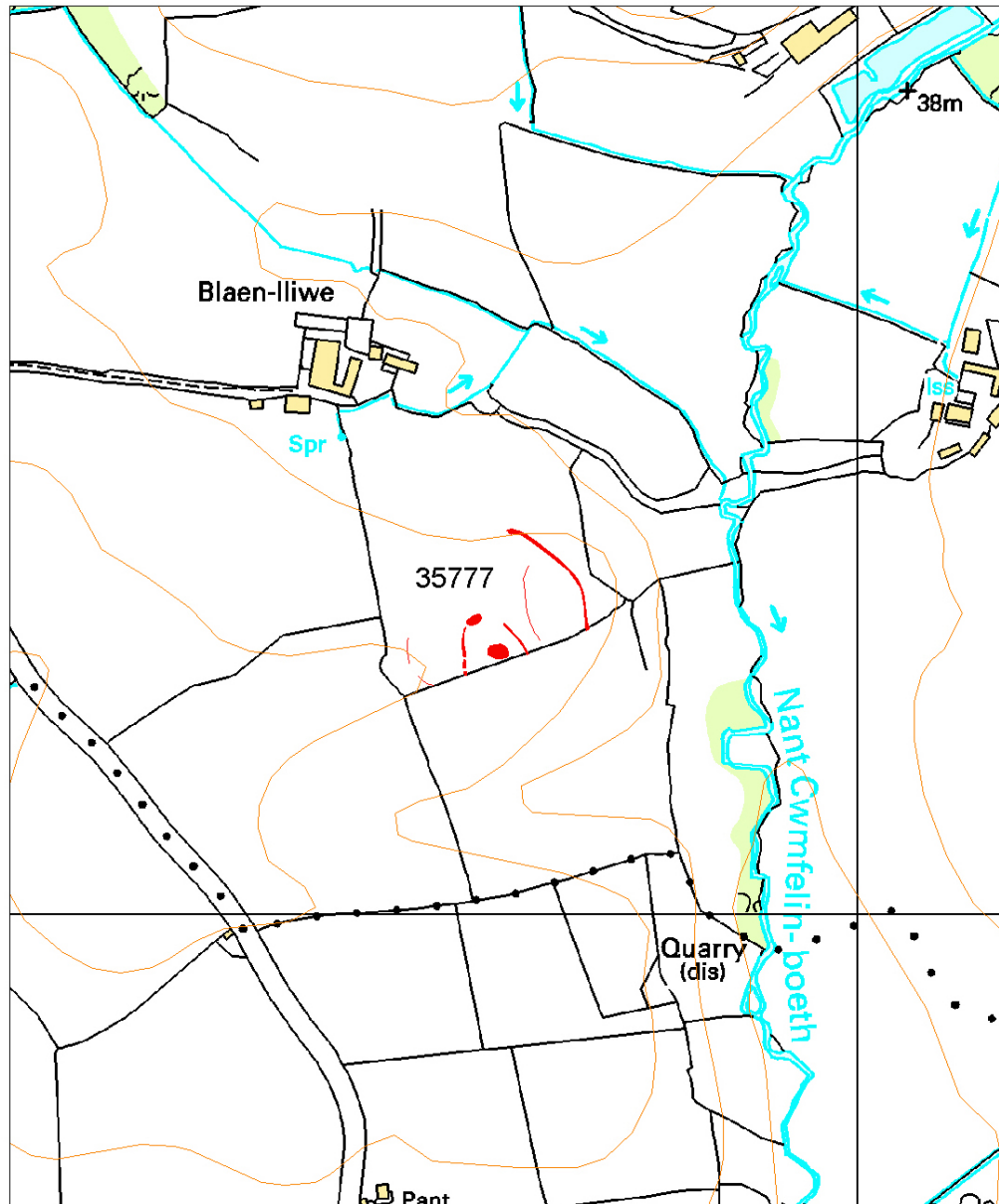
F Murphy and R Ramsey 26 February 2008



Looking NE over site of cropmark.

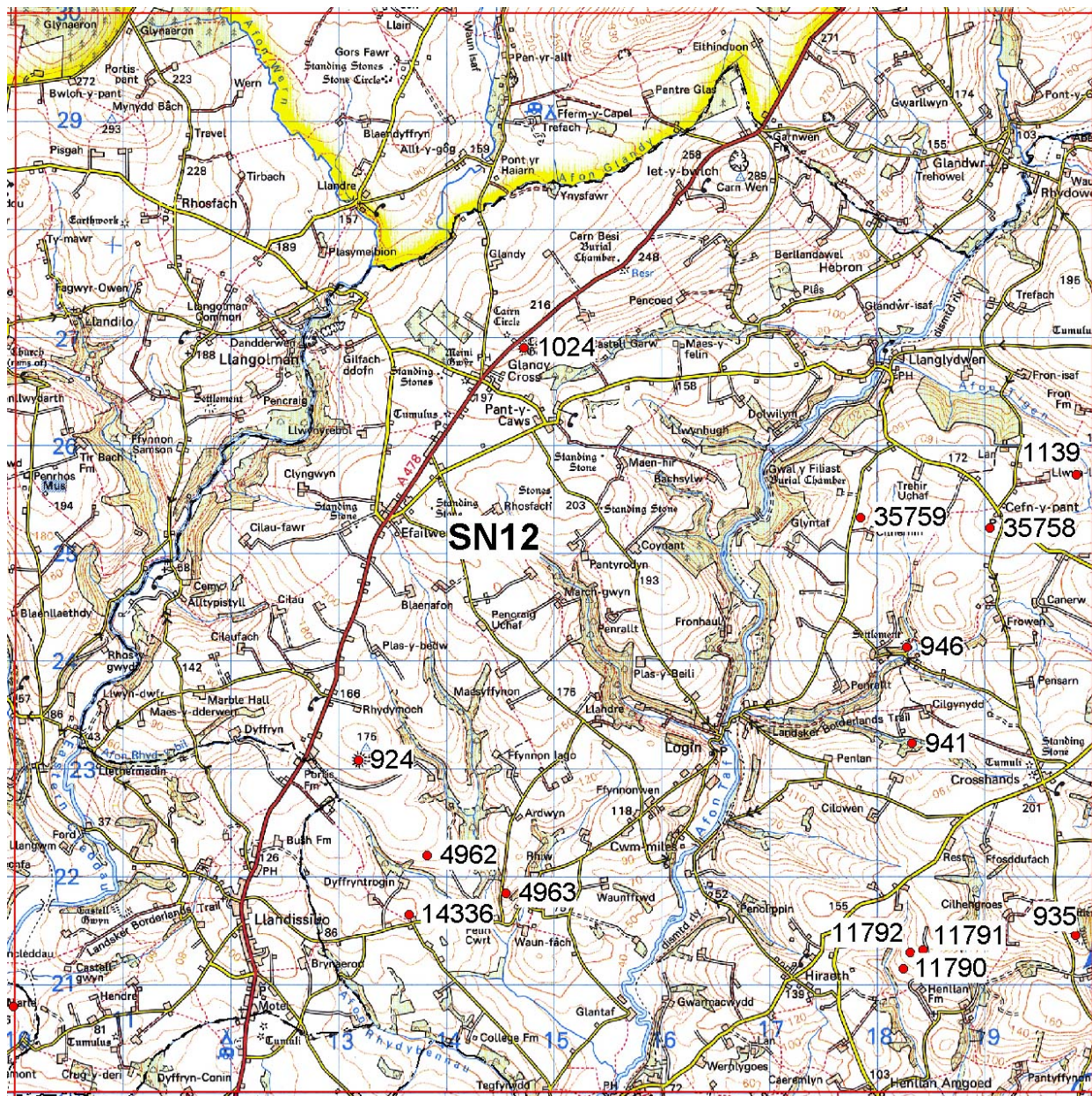


Aerial photograph of 35777. RCAHMW Crown Copyright © reference AP2006_3020.



1:5000

This map is reproduced from Ordnance Survey material with the permission of Ordnance Survey on behalf of the Controller of Her Majesty's Stationery Office © Crown copyright. Unauthorised reproduction infringes Crown copyright and may lead to prosecution or civil proceedings. Welsh Assembly Government. License Number: 100017916. 2000



Map based on the Ordnance Survey 1:50,000 map showing the distribution of sites in 10 km grid square SN12.

This map is reproduced from Ordnance Survey material with the permission of Ordnance Survey on behalf of the Controller of Her Majesty's Stationery Office © Crown copyright. Unauthorised reproduction infringes Crown copyright and may lead to prosecution or civil proceedings. Welsh Assembly Government. License Number: 100017916. 2000

924 Portis Parc Camp

PRN 924 NGR SN13182308

SITE NAME PORTIS PARC CAMP;PORTIS BACH CAMP MAPSHEET SN12SW

SITE TYPE DEFENDED ENCLOSURE FORM Earthwork

PERIOD Iron Age CONDITION C

SITE STATUS SAM

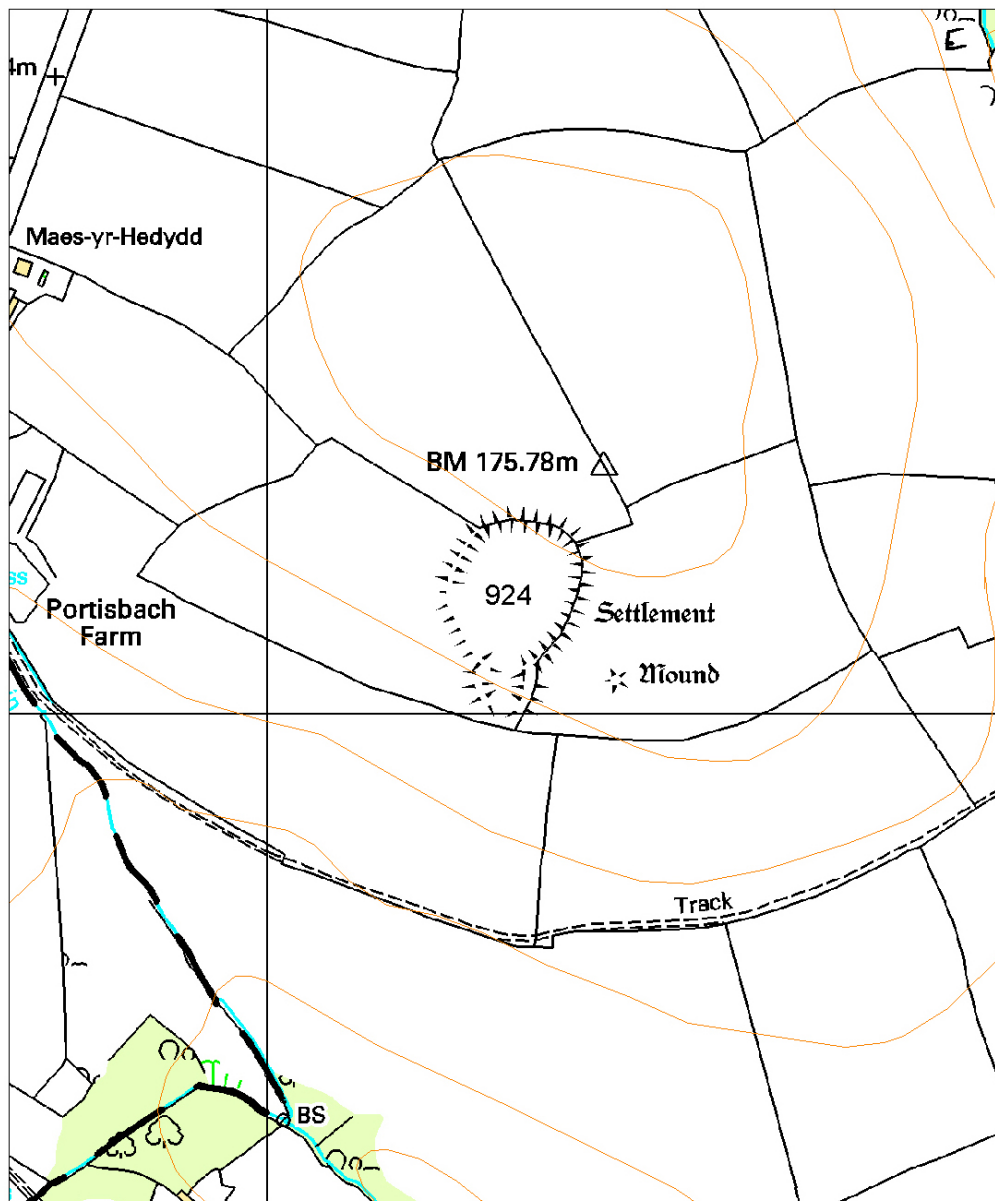
DESCRIPTION

A large, single banked oval enclosure, with an annexe or elaborate entrance on the south side. It is located on a hillslope at an elevation of 170m above sea level. The defensive bank surrounds an internal area of approximately 0.84 hectare. The whole site has been much reduced by ploughing, and the southern bank of the enclosure stands to an external height of 1.0m, although the bank is better preserved to the north and east, surviving to 2.0m high, where the bank is overlain by a hedge. There are very slight traces of an external ditch evident on the north and southeast. The entrance on the south is approached through an annexed enclosure 30m north-south by 20m east-west, whose banks are slightly lower than those ploughed out elsewhere.

F Murphy July 2007 - compiled from several sources



Aerial photograph of 924. RCAHMW Crown Copyright © reference DI2007_1678.



1:5000

This map is reproduced from Ordnance Survey material with the permission of Ordnance Survey on behalf of the Controller of Her Majesty's Stationery Office © Crown copyright. Unauthorised reproduction infringes Crown copyright and may lead to prosecution or civil proceedings. Welsh Assembly Government. License Number: 100017916. 2000

935 Gelli Diogyn

PRN 935 NGR SN19842146

SITE NAME GELLI DIOGYN MAPSHEET SN12SE

SITE TYPE DEFENDED ENCLOSURE FORM Earthwork

PERIOD Iron Age CONDITION C

SITE STATUS SAM

DESCRIPTION

A large concentric enclosure situated at the southern end of a spur of land at approximately 170m above sea level. It consists of a central sub-circular shaped enclosure, c.80m in diameter, defined by at least two lines of bank and ditches. The outer concentric defences are much ploughed but still visible, and survive up to 0.6m high. Steep natural slopes protect the east side.

The single visible entrance on the west is defined by a corridor-like approach with banks and ditches that extend outwards to form the outer concentric ditches. Overall the enclosure with its outworks has dimensions in excess of 230m x 160m.

Gelli Diogyn shows up clearly on a number of aerial photographs, demonstrating that it is an extremely complex site with further earthwork features of unknown date in the areas defined between the defensive circuits. The whole site is under cultivation and is regularly ploughed. The steep eastern slopes are wooded.

F Murphy July 2007 - compiled from several sources



Looking SE up towards area of concentric annex enclosure



Aerial photograph of 935. RCAHMW Crown Copyright © reference DI2007_1706.

This map is reproduced from Ordnance Survey material with the permission of Ordnance Survey on behalf of the Controller of Her Majesty's Stationery Office © Crown copyright. Unauthorised reproduction infringes Crown copyright and may lead to prosecution or civil proceedings. Welsh Assembly Government. License Number: 100017916. 2000

941 Allt Clyn Iar

PRN 941 NGR SN18322324

SITE NAME ALLT CLYN-IAR; CILGYNYDD MAPSHEET SN12SE

SITE TYPE ENCLOSURE; DEFENDED ENCLOSURE? FORM Earthwork

PERIOD Iron Age?; Early CONDITION B
medieval?; Medieval?; Post-Medieval?

SITE STATUS

DESCRIPTION

Allt Clyn-iar or Cilgynydd is a possible defensive site lying on an outcrop of shale situated on the floor of a narrow valley at 122m above sea level. J F Jones in 1961 described the stream channels either side of the outcrop as having been formed into moats, but later fieldworkers have dismissed this idea. However, a bank runs around the rim of the flat top of the outcrop, defining a sub-rectangular area c.100m by 40m. This bank is up to 1.0m high with an entrance at the east end. A track runs up to this entrance. Jones describes this east side of the outcrop as protected by a series of transverse ramparts - not described by other fieldworkers. There is a slighter entrance at the western end of the earthwork.

Jones classifies the site as a timber castle. Others have been dismissive of this, pointing out that the bank around the top of the outcrop is very slight, more like a field-bank. Its form and location do not suggest an Iron Age defended enclosure, but it seems too slight to be medieval. Possibly an early medieval defensive site or a post-medieval field enclosure?

In 2007 the site was under deciduous woodland.

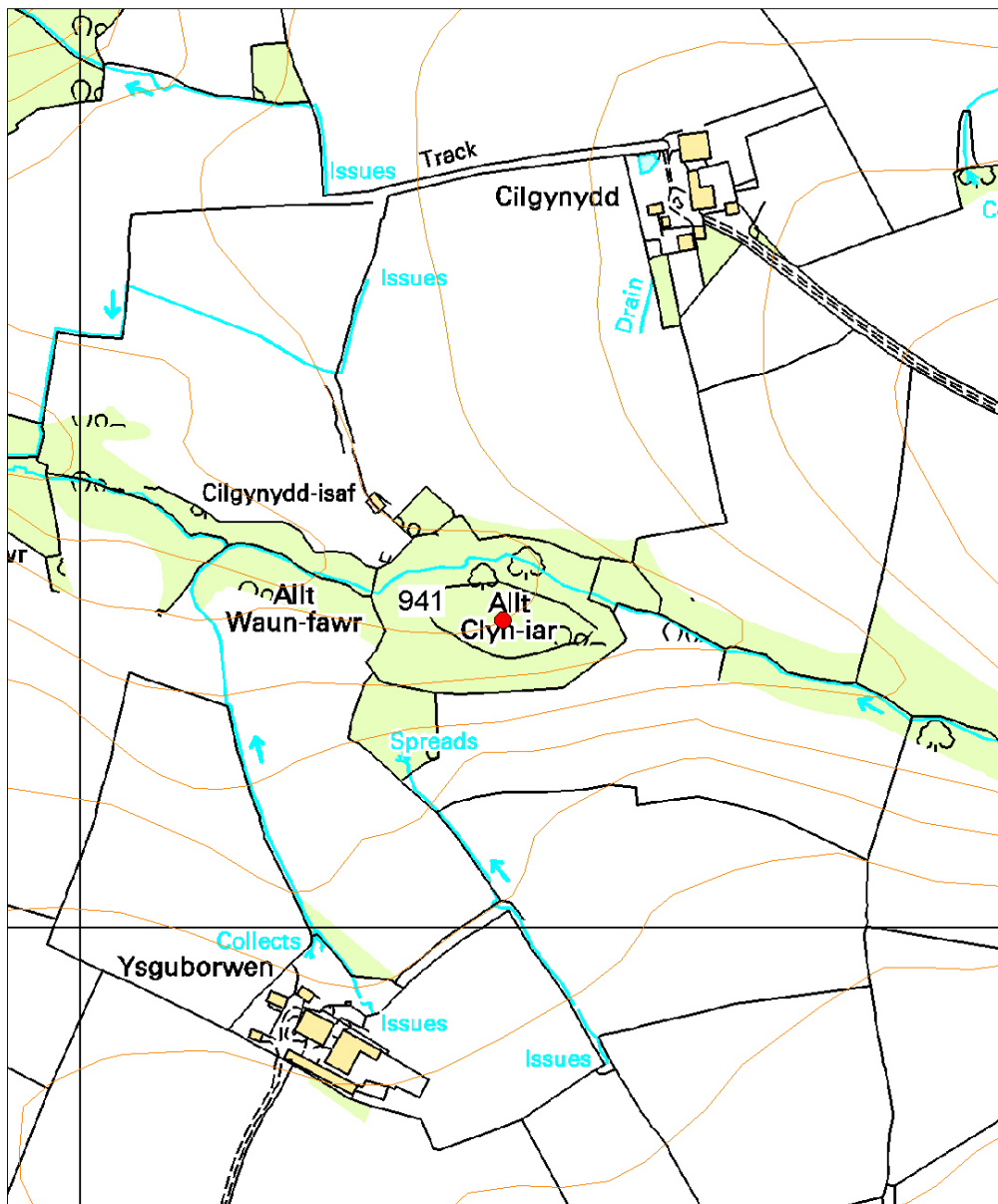
K Murphy and R Ramsey 5 February 2008



Looking E up track.



1955 aerial photograph of 941. Meridian 210-220 11350.



1:5000

This map is reproduced from Ordnance Survey material with the permission of Ordnance Survey on behalf of the Controller of Her Majesty's Stationery Office © Crown copyright. Unauthorised reproduction infringes Crown copyright and may lead to prosecution or civil proceedings. Welsh Assembly Government. License Number: 100017916. 2000

946 Pen-Gaer

PRN 946 NGR SN18272413

SITE NAME PEN-GAER; PARC GAER MAPSHEET SN12SE

SITE TYPE PROMONTORY FORT FORM Earthwork

PERIOD Iron Age CONDITION B

SITE STATUS SAM; ACK

DESCRIPTION

A small inland promontory fort situated on a hillslope, at some 110m above sea level. It is located on a promontory on ground sloping gently to the south-east in the angle created by the confluence of two streams. To the north, west and south a single bank and ditch encloses a semi-circular area approximately 66m north-south by 50m east-west. The bank measures approximately 1.8m externally, 1.5m internally, with the possibility of a counterscarp bank on the northwest. On the east and southeast steep slopes that drop down to the stream defend the site, although a weak internal bank was visible to the Ordnance Survey along this edge.

A break in the rampart on the northeast may be the original entrance. However, in 1975 the Ordnance Survey reported that a simple entrance was visible on the south, although scrub woodland now obscures this area.

The steep slopes down to the river are heavily wooded, and the enclosure lies in the corner of a field used for pasture. The site is not under cultivation, although it appears that the interior has been ploughed in the past.

F Murphy July 2007 - compiled from several sources



Aerial photograph of 946. Reference DAT AP89-88.22.



1:5000

This map is reproduced from Ordnance Survey material with the permission of Ordnance Survey on behalf of the Controller of Her Majesty's Stationery Office © Crown copyright. Unauthorised reproduction infringes Crown copyright and may lead to prosecution or civil proceedings. Welsh Assembly Government. License Number: 100017916. 2000

1024 Castell Garw

PRN 1024 NGR SN14722690

SITE NAME CASTELL-GARW MAPSHEET SN12NW

SITE TYPE ENCLOSURE?; DEFENDED ENCLOSURE? FORM Earthwork

PERIOD Prehistoric?; Iron Age? CONDITION B

SITE STATUS SAM

DESCRIPTION

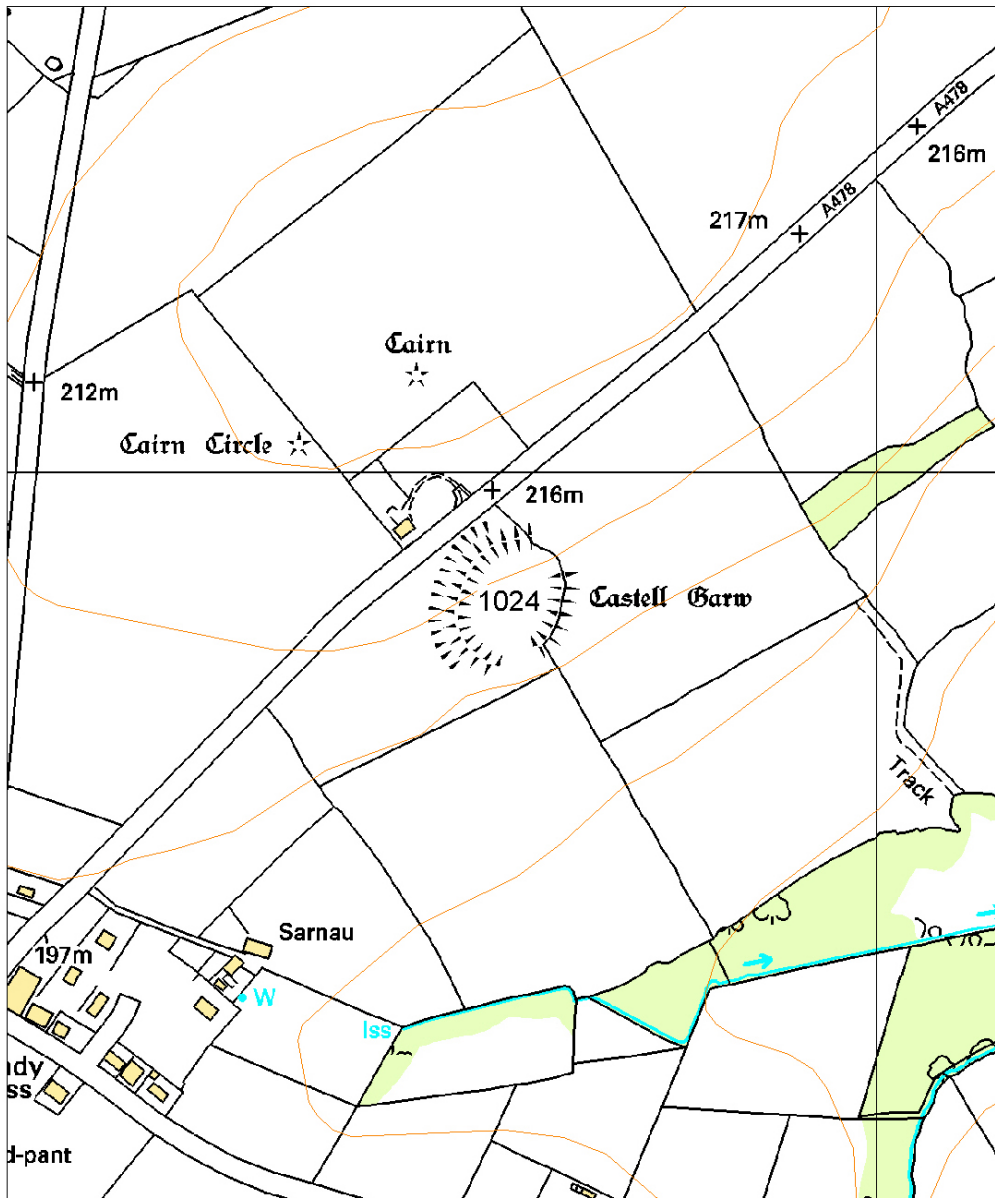
Castell Garw is a large, single-banked enclosure with an outer ditch and an entrance on the south, situated on a southeast facing hillslope at 210m above sea level. Circular in shape, in 1967 the Ordnance Survey reported that the bank had a maximum height of 0.8m, and a counterscarp of 0.5m. An earlier date for the enclosure has been suggested, and the possibility of it being a henge monument. However, the Ordnance Survey states that the supposed recumbent stones within the enclosure are a natural outcrop, and the believed collection of megaliths found northeast of the earthwork are not recognisable as the remains of a burial chamber.

Partial excavation in the 1990's yielded evidence for a series of stake holes and rhyolite artefacts that indicated earlier occupation of the site but may not rule out the case for the present earthworks being an Iron Age enclosure.

F Murphy July 2007 - compiled from several sources



Aerial photograph of 1024. Reference DAT AP85-26.30.



1:5000

This map is reproduced from Ordnance Survey material with the permission of Ordnance Survey on behalf of the Controller of Her Majesty's Stationery Office © Crown copyright. Unauthorised reproduction infringes Crown copyright and may lead to prosecution or civil proceedings. Welsh Assembly Government. License Number: 100017916. 2000

1139 Lleyn Llwyd

PRN 1139 NGR SN19842572

SITE NAME LLWYN LLWYD MAPSHEET SN12NE

SITE TYPE DEFENDED ENCLOSURE FORM Earthwork

PERIOD Prehistoric?; Iron Age? CONDITION C

SITE STATUS

DESCRIPTION

Llwyn Llwyd is an oval defended enclosure occupying a gentle east-facing slope at c.130m above sea level. Along the east edge of the site the land falls away steeply to a stream 25m below. From the surviving remains it is unclear whether the defensive circuit incorporates the steep break of slope or whether the slope provides the only defence on this side, probably the former, in which case this site is definitely a defended enclosure rather than a promontory fort. The defensive circuit consists of a curving bank rising up to 1.2m above the exterior and 0.5m above the interior, with traces of an external ditch. The bank becomes less pronounced to the north and fades to the south - the entrance is most likely to lie here. The interior measures c.70m N-S and 55m E-W.

The site is under improved pasture. In 2006 the site was ploughed for the first time in 50 years, and it is likely to be ploughed at regular intervals in the future.

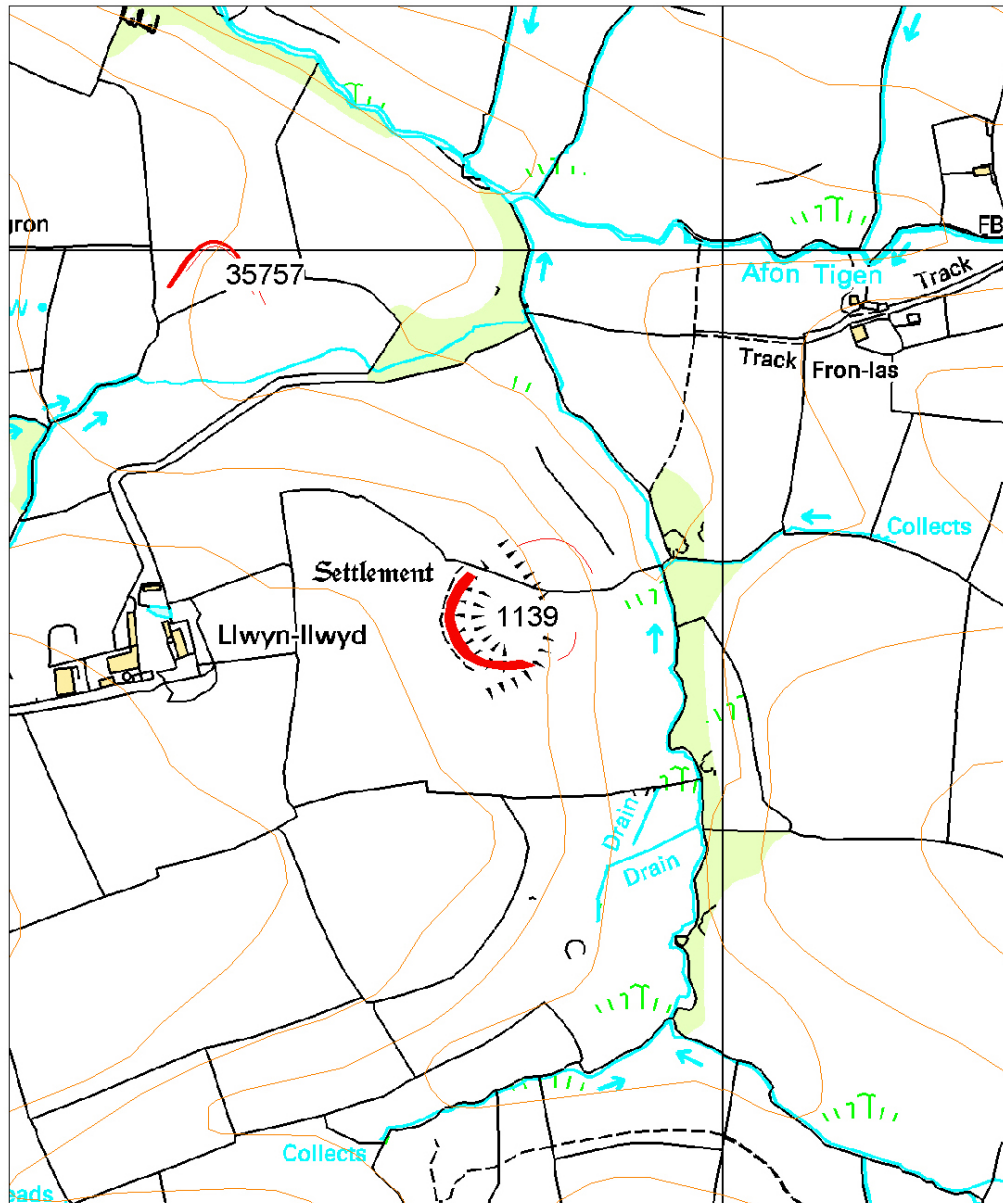
K Murphy and R Ramsey 5 February 2008



Looking E towards site.



Aerial photograph of 1139. RCAHMW Crown Copyright © reference DI2007_1675.



1:5000

This map is reproduced from Ordnance Survey material with the permission of Ordnance Survey on behalf of the Controller of Her Majesty's Stationery Office © Crown copyright. Unauthorised reproduction infringes Crown copyright and may lead to prosecution or civil proceedings. Welsh Assembly Government. License Number: 100017916. 2000

4962 Parc y Gaer

PRN 4962 NGR SN13822220

SITE NAME PARC Y GAER MAPSHEET

SITE TYPE DEFENDED ENCLOSURE FORM Earthwork

PERIOD Iron Age CONDITION C

SITE STATUS

DESCRIPTION

A sub-circular, univallate defended enclosure situated on a gentle SE facing hillslope at 120m above sea level. The RCAHM record that the site lies within a field called 'Parc yr gaer', but refer to it as having 'no appearance of antiquity about it'. The site was visited in 1984 by Dyfed Archaeological Trust and identified as a univallate enclosure. In 2007 it is obvious that the site has been heavily ploughed over the years and the single rampart is now much spread. The enclosure measures c.60m in diameter and has a dished appearance. The spread rampart is between 14m and 16m in width and stands to a height of less than 0.5m. There appears to be a simple entrance on the N side visible on aerial photographs but not on the ground. On the ground there are traces of an outer ditch in places. The site is situated within a field under pasture.

F Murphy and R Ramsey 26 February 2008



Aerial photograph of 4962. RCAHMW Crown Copyright © reference DI2007_1738.



1:5000

This map is reproduced from Ordnance Survey material with the permission of Ordnance Survey on behalf of the Controller of Her Majesty's Stationery Office © Crown copyright. Unauthorised reproduction infringes Crown copyright and may lead to prosecution or civil proceedings. Welsh Assembly Government. License Number: 100017916. 2000

4963 Pen y Gaer

PRN 4963 NGR SN14552185

SITE NAME PEN-Y-GAER MAPSHEET SN12SW

SITE TYPE PROMONTORY FORT FORM Earthwork

PERIOD Iron Age CONDITION C

SITE STATUS

DESCRIPTION

Pen y Gaer is a univallate inland promontory fort lying at c.110m above sea level. It is naturally well defended by steep slopes to the west, south and east, which fall away to streams 50m below. On its easily approachable north side it is defended by a c.100m long length of bank and ditch.. The bank rises to 2.5m - 3.5m above the exterior ditch and 0.5m above the interior. The ditch is up to 1.0m deep and 8.0m wide. A hedge runs along the crest of the bank. The location of the entrance is uncertain, but it may be at the western end of the bank and ditch where there is some erosion caused by cattle trampling. The interior is oval in shape, c.95m N-S and 85m E-W. A slight hollow in the northeast corner of the interior may mark the site of a roundhouse. The interior of the fort is under improved pasture, the rampart under trees, bushes and long grass.

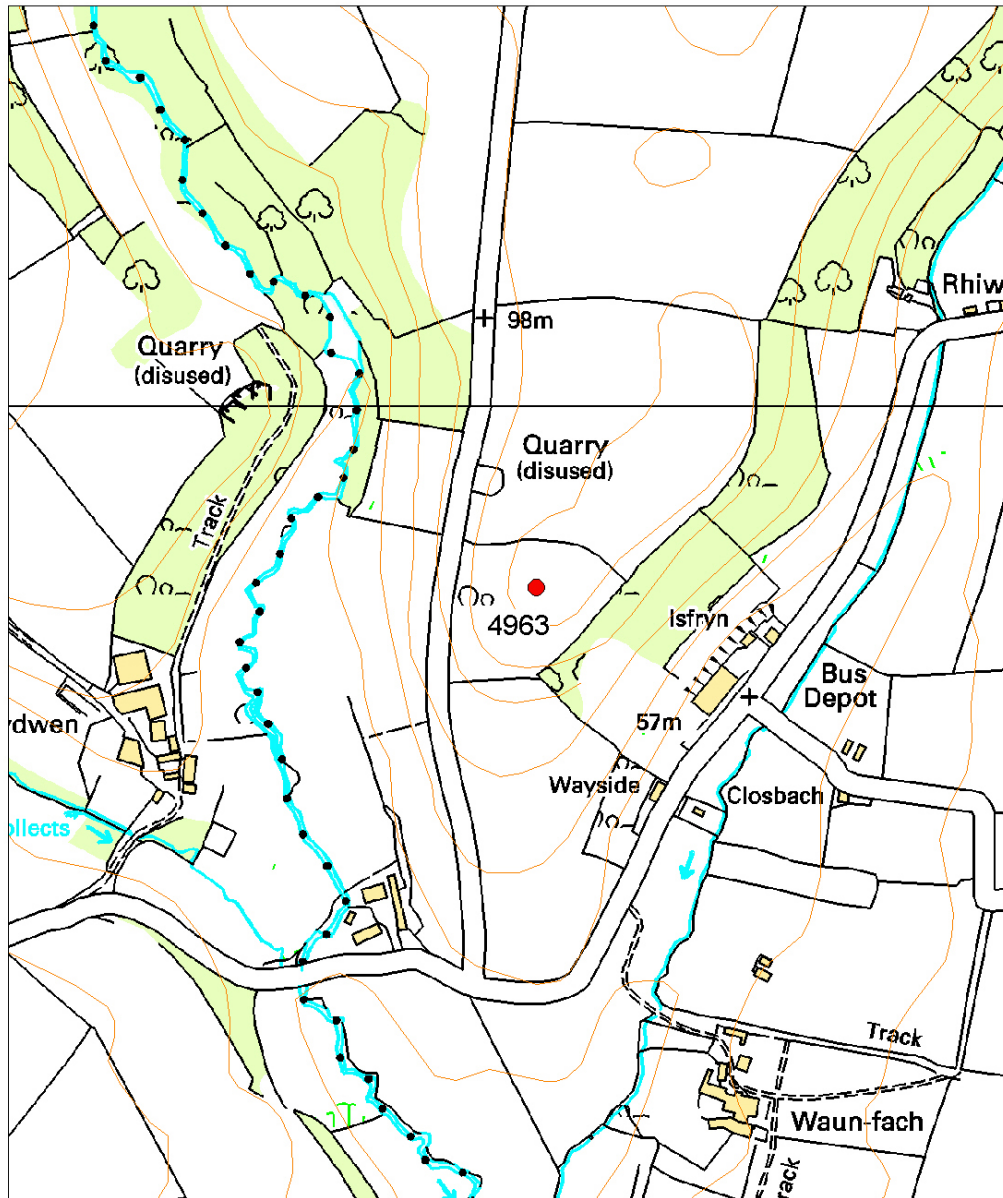
K Murphy and R Ramsey 8 February 2008



Looking E along the fort's defences.



1955 Aerial photograph of 4963. Meridian 210-220 11149.



1:5000

This map is reproduced from Ordnance Survey material with the permission of Ordnance Survey on behalf of the Controller of Her Majesty's Stationery Office © Crown copyright. Unauthorised reproduction infringes Crown copyright and may lead to prosecution or civil proceedings. Welsh Assembly Government. License Number: 100017916. 2000

11790 Henllan Farm I

PRN 11790 NGR SN18242115

SITE NAME HENLLAN FARM I MAPSHEET SN12SE

SITE TYPE DEFENDED ENCLOSURE FORM Earthwork

PERIOD Prehistoric?; Iron Age? CONDITION B

SITE STATUS

DESCRIPTION

This is a good example of a small, univallate defended enclosure with a concentric annexe. It lies on a south-facing slope at 105m -120m above sea level in improved pasture. It was discovered from the air in 1984 when it was visible as a faint cropmark. The inner, sub-circular enclosure, of c.45m diameter, is marked by a distinct cropmark ditch. The south-facing entrance is approached by a track defined by two flanking ditches. These splay out at their ends to form the ditch of the concentric annexe. This annexe is c.140m in diameter.

On the ground this site is visible as a low earthwork. The banks accompanying both the inner enclosure ditch and the annexe ditch have a maximum height of 0.3m. The ditch to the annexe is also well marked on the northeast and southwest sides. The interior of the inner enclosure occupies almost level ground and is slightly dished.

The enclosure lies 100m south of enclosure PRN11791 and 150m south of PRN11792.

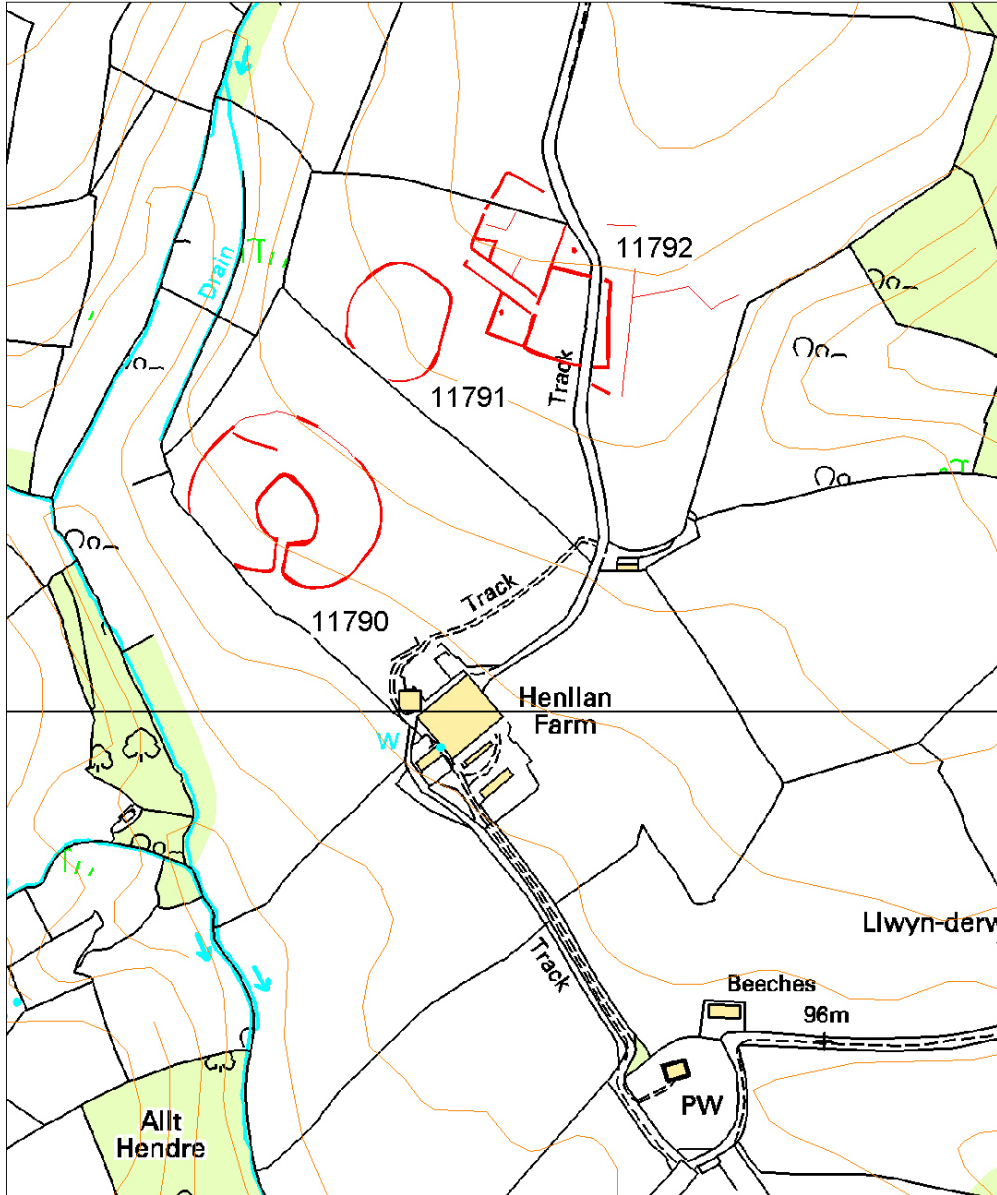
K Murphy and R Ramsey 8 February 2008



Looking S over enclosure.



Aerial photograph of 11790. Reference DAT AP89-172.06.



1:5000

This map is reproduced from Ordnance Survey material with the permission of Ordnance Survey on behalf of the Controller of Her Majesty's Stationery Office © Crown copyright. Unauthorised reproduction infringes Crown copyright and may lead to prosecution or civil proceedings. Welsh Assembly Government. License Number: 100017916. 2000

11791 Henllan Farm II

PRN 11791 NGR SN18302130

SITE NAME HENLLAN FARM II MAPSHEET SN12SE

SITE TYPE DEFENDED ENCLOSURE FORM Cropmark

PERIOD Prehistoric?; Iron Age? CONDITION D

SITE STATUS

DESCRIPTION

This is an oval shaped defended enclosure occupying a gentle south-facing slope at 130m above sea level. It lies 100m north of enclosure PRN11790 and 50m southwest of enclosure PRN11792. It was discovered during aerial survey. Aerial photographs show a cropmark ditch defining the enclosure, measuring c.77m N-S and 70m E-W. There is no obvious entrance, but a dark cropmark on the east side may mark a hollow-way.

The site lies in improved pasture. In 2007 the defensive bank was visible as a very low earthwork that reached a maximum height of 0.25m. The interior was slightly dished.

K Murphy and R Ramsey 8 February 2008



Looking S over enclosure.



Aerial photograph of 11791. Reference DAT AP84-71.34 .

11792 Henllan Farm III

PRN 11792 NGR SN18422132

SITE NAME HENLLAN FARM III MAPSHEET SN12SE

SITE TYPE DEFENDED ENCLOSURE? FORM Cropmark

PERIOD Iron Age?; Roman?; Medieval CONDITION D

SITE STATUS

DESCRIPTION

This cropmark enclosure site was discovered during aerial survey in 1984. It lies towards the crest of a south-facing slope at 140m above sea level, 50m northeast of enclosure PRN11791 and 150m north of enclosure PRN11790. It was described by its discoverer (Terry James) as 'a rectilinear series of ditched contiguous enclosures comprising a long, narrow passageway on a NW-SE alignment with three trapezoidal-shaped enclosures to the north, east and south. The eastern enclosure has an entrance gap leading directly from the narrow passageway, and the latter has an entrance to the west, with post pits clearly recognisable on the air photos. The whole complex measures approx. 130m by 130m, and may be considered a successor to enclosures PRN11790-11791'.

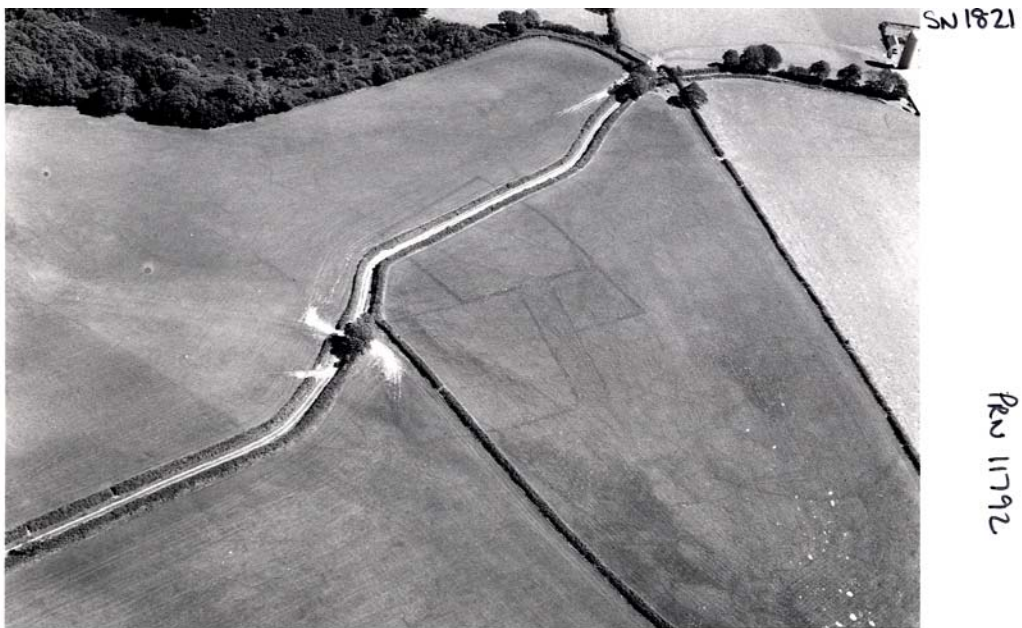
In 2007 the site is marked on the ground by very slight undulations - but essentially the site is a cropmark.

It is a difficult site to classify. It could be a late Iron Age defended enclosure, or a Roman, Early Medieval or Medieval settlement.

K Murphy and R Ramsey 8 February 2008



Looking S over enclosure.



Aerial photograph of 11792. Reference DAT AP84-71.32.

14336 Plas y Parc

PRN 14336 NGR SN13652165

SITE NAME PLAS-Y-PARC MAPSHEET SN12SW

SITE TYPE DEFENDED ENCLOSURE FORM Cropmark

PERIOD Iron Age?; Prehistoric? CONDITION C

SITE STATUS

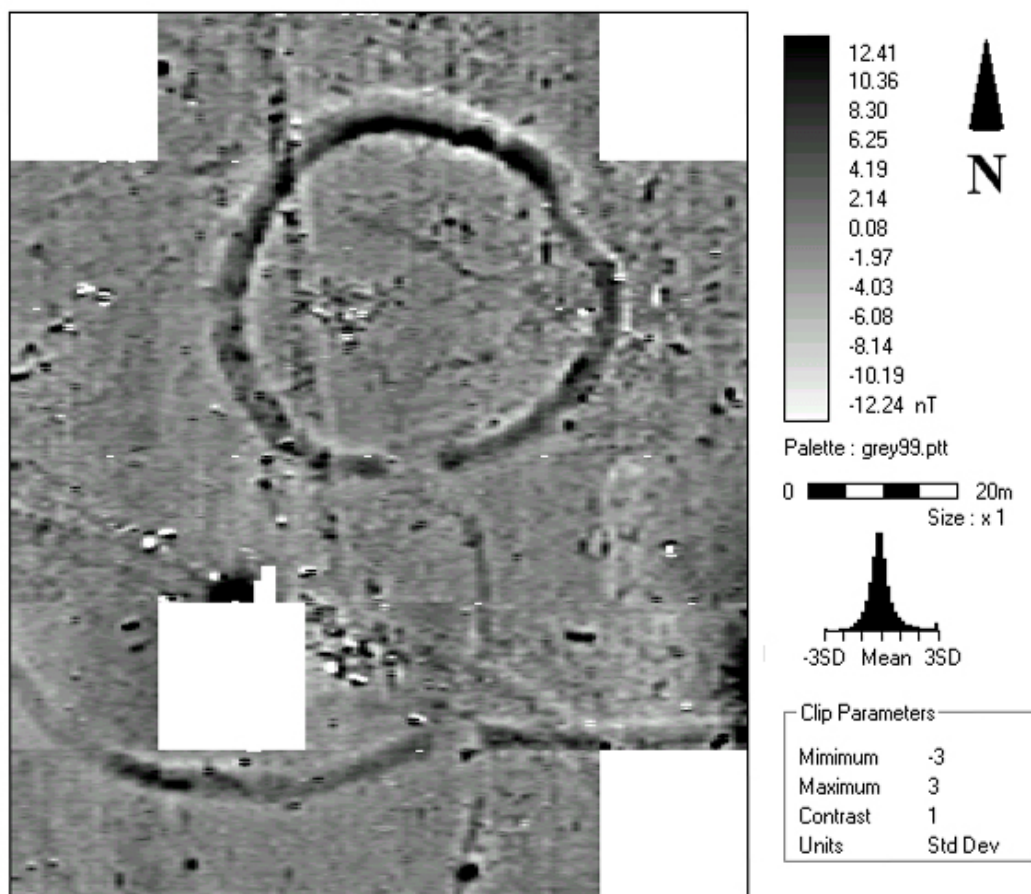
DESCRIPTION

Plas-y-Parc is a univallate, oval-shaped, cropmark defended enclosure with a concentric annexe occupying a low rounded hilltop at c.100m above sea level. The inner enclosure is defined by a cropmark ditch and approximates to a circle c.45m diameter internally, with an entrance on the south side. Aerial photographs show a track with flanking ditches approaching this entrance, but these were not obvious on a geophysical survey undertaken in 2007. A concentric enclosure, defined by a fainter ditch, c.160m across surrounds the inner enclosure. The site is under improved pasture. Since the site was first discovered from the air in 1984 several hedgebanks have been removed.

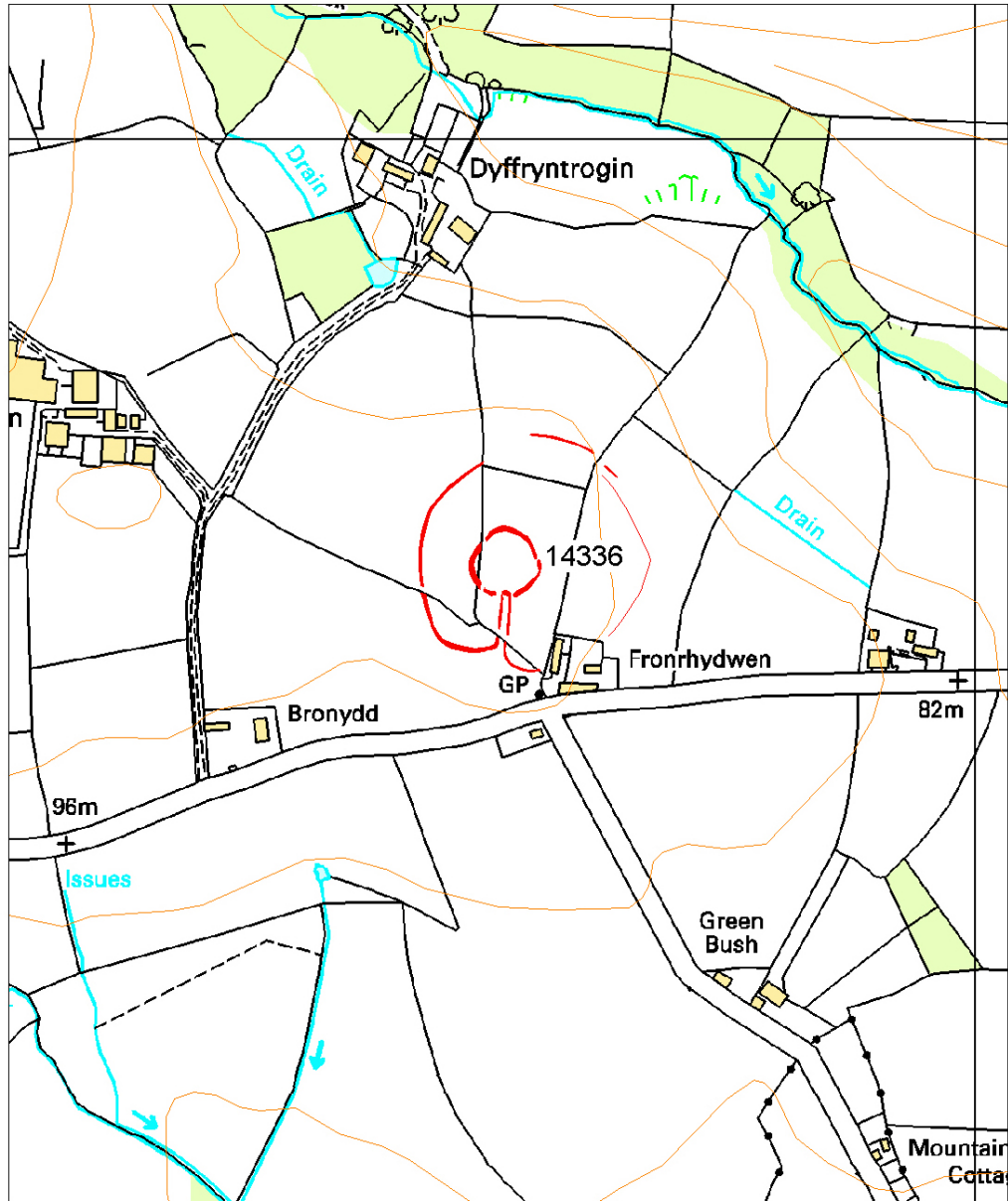
K Murphy 9 February 2008



Aerial photograph of 14336. Reference DAT AP89-173.11.



Geophysical survey of Plas y Parc, 2007.



1:5000

This map is reproduced from Ordnance Survey material with the permission of Ordnance Survey on behalf of the Controller of Her Majesty's Stationery Office © Crown copyright. Unauthorised reproduction infringes Crown copyright and may lead to prosecution or civil proceedings. Welsh Assembly Government. License Number: 100017916. 2000

35758 Cefn y Pant

PRN 35758 NGR SN19042523

SITE NAME CEFN-Y-PANT MAPSHEET SN12NE

SITE TYPE DEFENDED ENCLOSURE FORM Earthwork

PERIOD Iron Age?; Prehistoric? CONDITION C

SITE STATUS

DESCRIPTION

Cefn-y-Pant is a circular defended enclosure occupying the summit of a local hill at 65m above sea level. It survives as a low earthwork bank, up to 0.25m high with traces of an external ditch. The internal diameter of the enclosure is c.60m. It has a simple southeast-facing entrance. On aerial photographs the site shows as a cropmark ditch and a parchmark bank. Aerial photographs also seem to show a possible annexe on the west side of the enclosure. On the ground very low earthworks mark this annexe, which measures c.60m by 60m. There are also low earthworks to the south of the enclosure. In 2007 the site was under improved pasture.

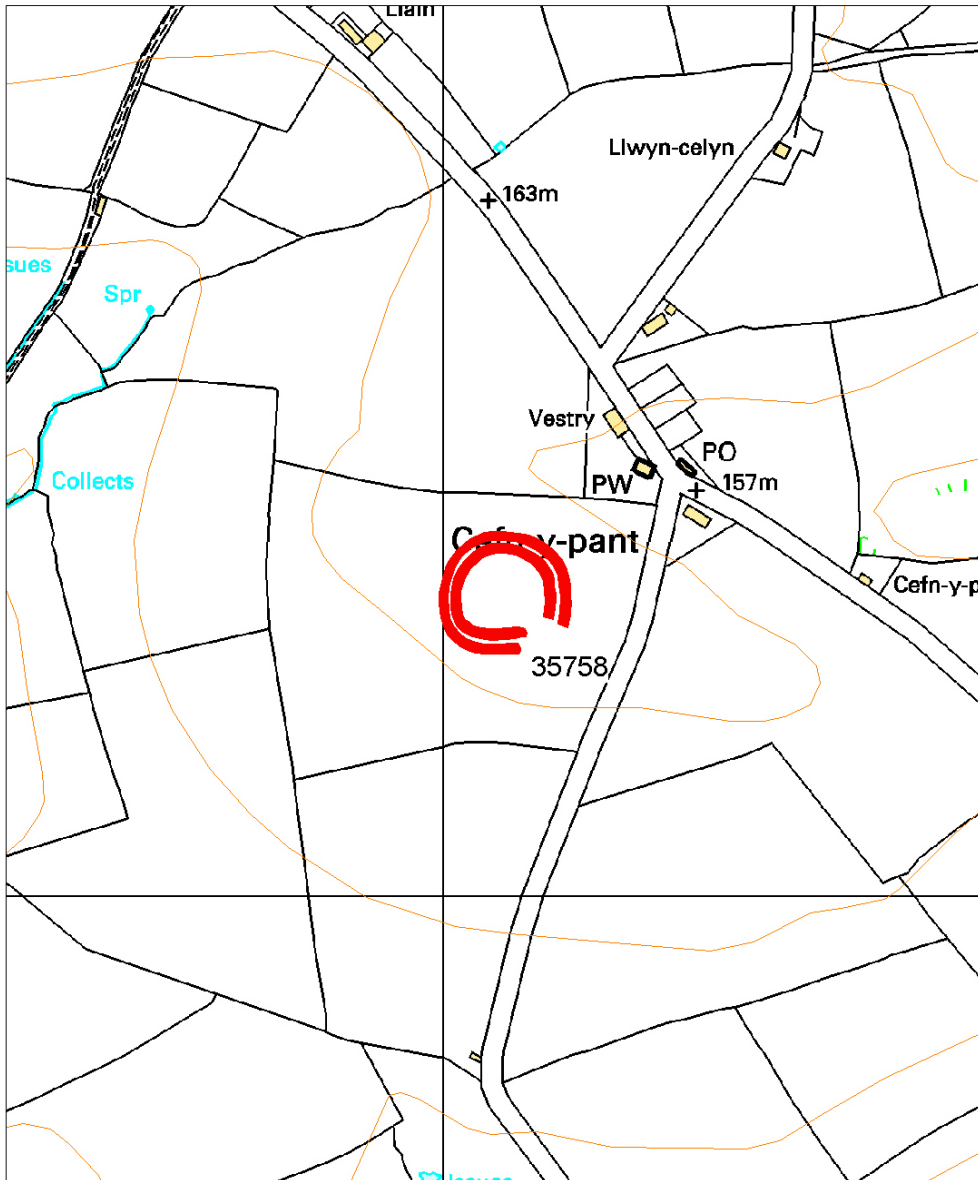
K Murphy and R Ramsey 9 February 2008



Looking E towards enclosure.



Aerial photograph of 35758. RCAHMW Crown Copyright © reference DI2007_1659.



1:5000

This map is reproduced from Ordnance Survey material with the permission of Ordnance Survey on behalf of the Controller of Her Majesty's Stationery Office © Crown copyright. Unauthorised reproduction infringes Crown copyright and may lead to prosecution or civil proceedings. Welsh Assembly Government. License Number: 100017916. 2000

35759 Cilherin

PRN 35759 NGR SN17842533

SITE NAME CILHERNIN MAPSHEET SN12NE

SITE TYPE DEFENDED ENCLOSURE FORM Earthwork

PERIOD Iron Age?; Prehistoric? CONDITION C

SITE STATUS

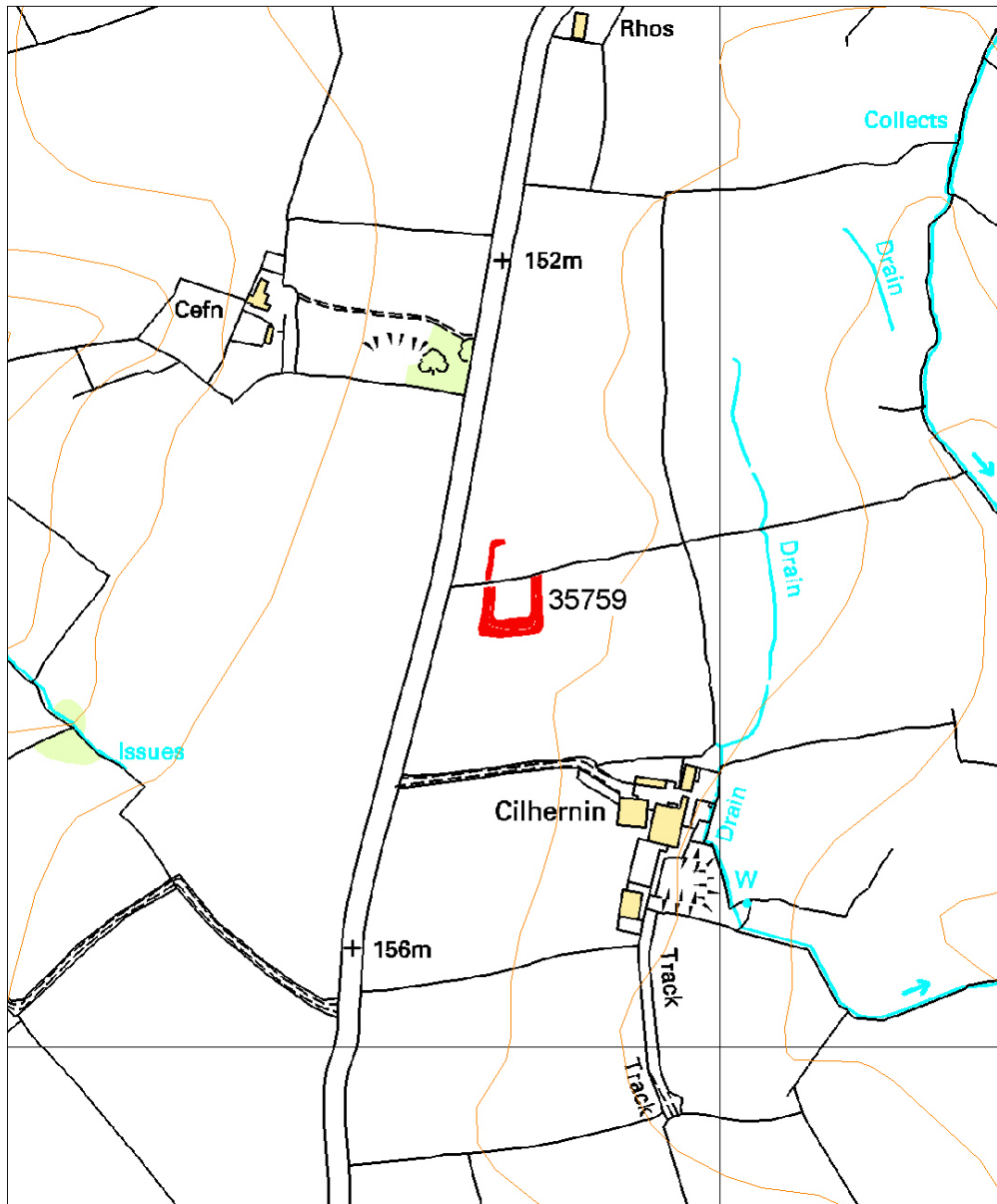
DESCRIPTION

Aerial photographs show a small, sharp-cornered rectangular enclosure lying on fairly level ground (very gentle east-facing slope) at 150m above sea level. The enclosure is divided in two by an E-W hedgebank. The photographs show a bank and ditch of the defensive circuit, with all but the northeast corner visible. The enclosure measures c.55m N-S and c.30m E-W. On the ground the enclosure bank stands up to 0.35m high on the south side, but fades to nothing towards the north. There is no trace of an entrance. In 2007 the site was under improved pasture. According to the landowner the site has not been ploughed for over 70 years.

K Murphy and R Ramsey 8 February 2008



Aerial photograph of 35759. RCAHMW Crown Copyright © reference DI2007_1658.



1:5000

This map is reproduced from Ordnance Survey material with the permission of Ordnance Survey on behalf of the Controller of Her Majesty's Stationery Office © Crown copyright. Unauthorised reproduction infringes Crown copyright and may lead to prosecution or civil proceedings. Welsh Assembly Government. License Number: 100017916. 2000