

A SURVEY OF DEFENDED ENCLOSURES IN CEREDIGION, 2006: GAZETTEER OF ORDNANCE SURVEY GRID SQUARES SN45 AND SN46



Paratowyd gan Archaeoleg
Cambria
Ar gyfer Cadw
Prepared by Cambria
Archaeology

ARCHAEOLEG CAMBRIA ARCHAEOLOGY

RHIF YR ADRODDIAD / REPORT NO. 2006/20
RHIF Y PROSIECT / PROJECT RECORD NO. 54269

Mawrth 2006
March 2006

A SURVEY OF DEFENDED ENCLOSURES IN CEREDIGION, 2006: GAZETTEER OF ORDNANCE SURVEY GRID SQUARES SN45 AND SN46

Gan / By

K Murphy, R Ramsey and M Page

*Archaeoleg Cambria yw enw marchnata Ymddiriedolaeth Archaeolegol Dyfed Cyfyngedig.
Cambria Archaeology is the marketing name of the Dyfed Archaeological Trust Limited.*

Paratowyd yr adroddiad yma at ddefnydd y cwsmer yn unig. Ni dderbynnir cyfrifoldeb gan Archaeoleg Cambria am ei ddefnyddio gan unrhyw berson na phersonau eraill a fydd yn ei ddarllen neu ddibynnu ar y gwybodaeth y mae'n ei gynnwys

The report has been prepared for the specific use of the client. Cambria Archaeology can accept no responsibility for its use by any other person or persons who may read it or rely on the information it contains.



Llywodraeth Cynulliad Cymru
Welsh Assembly Government

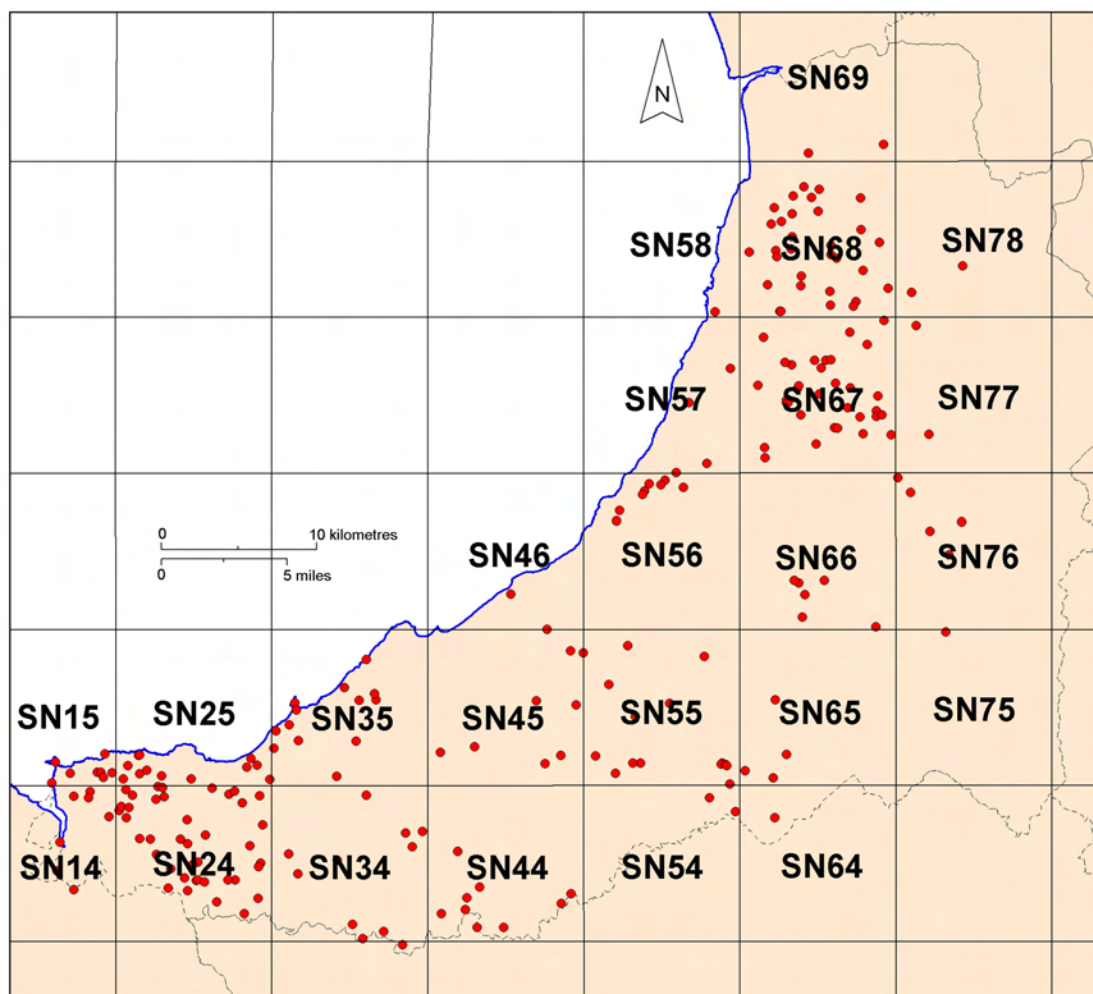
ARCHAEOLEG CAMBRIA
Ymddiriedolaeth Archaeolegol Dyfed Cyf
Neuadd y Sir, Stryd Caerfyrddin, Llandeilo, Sir Gaerfyrddin SA19
6AF
Ffon: Ymholiadau Cyffredinol 01558 823121
Adran Rheoli Treftadaeth 01558 823131
Ffacs: 01558 823133
Ebst: cambria@acadat.com Gwefan: www.acadat.com

CAMBRIA ARCHAEOLOGY
Dyfed Archaeological Trust Limited
The Shire Hall, Carmarthen Street, Llandeilo, Carmarthenshire
SA19 6AF
Tel: General Enquiries 01558 823121
Heritage Management Section 01558 823131
Fax: 01558 823133
Email: cambria@acadat.com Website: www.acadat.com

SITE GAZETTEER OF 10KM GRID SQUARES SN45 and SN46

For ease of handling the site gazetteers have been arranged into Ordnance Survey 10km grid squares. Each gazetteer consists of one or more 1:50,000 maps showing the overall location of each site followed by the individual entries for each site. Each entry comprises: a printout from the Historic Environment Record, including a site description; a 1:500 map; and where available a ground photograph and an aerial photograph.

Many of the 1:500 maps show details of the site plotted from cropmarks shown on aerial photographs. These plots are supplied by RCAHMW Crown Copyright ©.



Index to the gazetteers of defended enclosures and related sites. Gazetteers are arranged by 10km grid squares.



1:50,000 Distribution map of sites in 10km grid square SN45.

This map is reproduced from the Ordnance Survey map by the National Assembly for Wales with the permission of The Controller of Her Majesty's Stationery Office. Crown Copyright. All rights reserved. Unauthorised reproduction infringes Crown Copyright and may lead to prosecution and civil proceedings. Licence No. GD 272221

1847 CWM CASTELL

PRN 1847 NGR SN46945544

SITE NAME CWM CASTELL

SITE TYPE HILLFORT FORM Earthwork

PERIOD Iron Age CONDITION C

SITE STATUS SAM

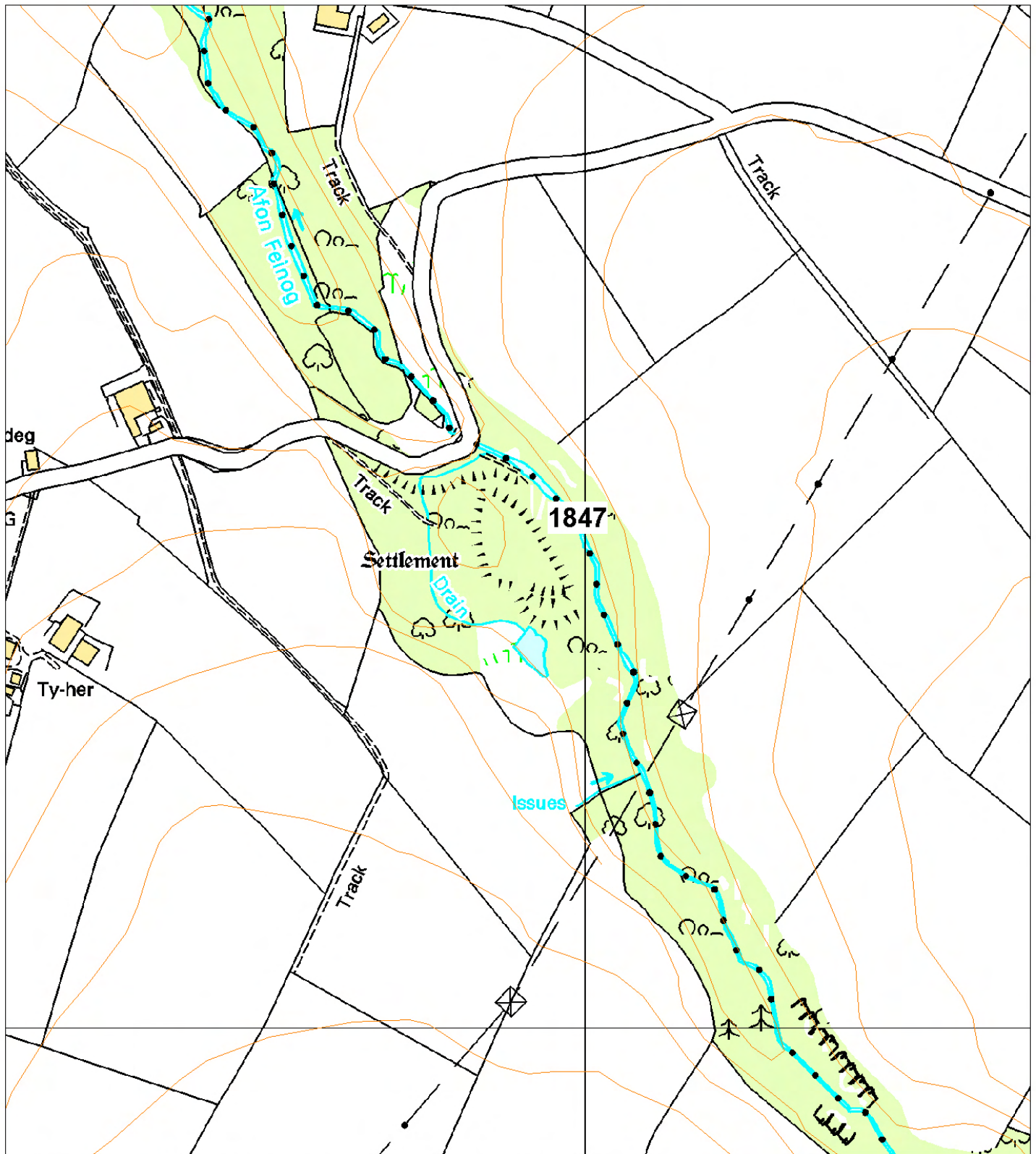
DESCRIPTION

Cwm-castell lies in a strong naturally defended position on a knoll within a narrow valley at 170m above sea level. At its weaker south end there is a bivallate defence, with an inner bank 7m wide and 3m high fronted by a silted ditch and an outer bank 17m wide and 2m high. There is a trace of a stone revetment to the inner bank. There is a slightly in-turned entrance at the northwest end of these rampart terminals. Just north of this a platform may indicate the site of a round-house. A single rampart defends the remainder of the site. The internal area is irregular in shape, and measures 110m north - south and 50m east - west. The site is very overgrown with deciduous woodland, scrub and brambles.

K Murphy 15 December 2005 - from various descriptions.



Aerial photograph RCAHMW Crown Copyright © reference 99-cs-2268.



This map is reproduced from the Ordnance Survey map by the National Assembly for Wales with the permission of The Controller of Her Majesty's Stationery Office. Crown Copyright. All rights reserved. Unauthorised reproduction infringes Crown Copyright and may lead to prosecution and civil proceedings. Licence No. GD 272221

Scale: 1:500

1850 Y GAER

PRN 1850 NGR SN49955852

SITE NAME GAER Y

SITE TYPE DEFENDED ENCLOSURE FORM Earthwork

PERIOD Iron Age; Roman CONDITION C

SITE STATUS

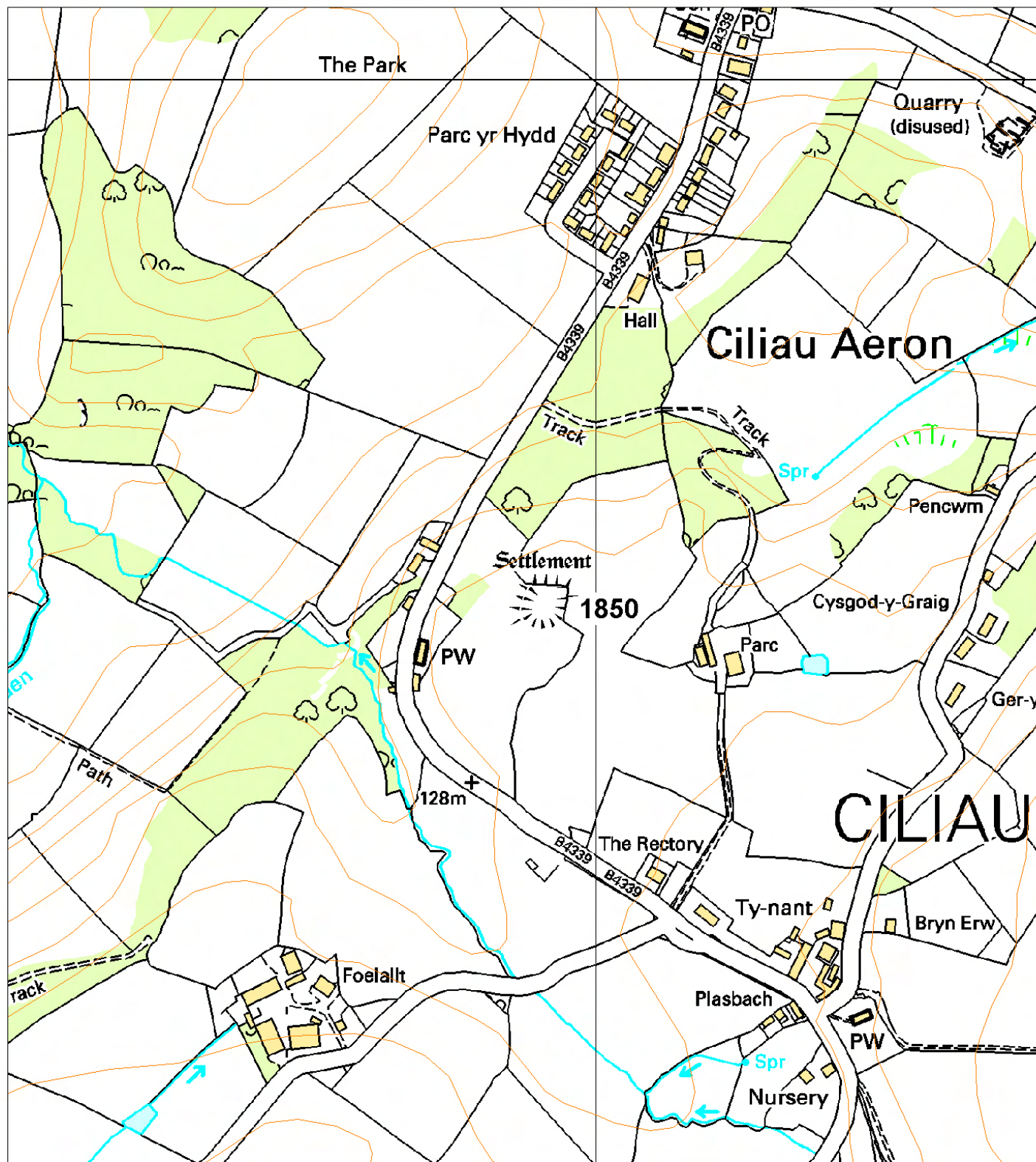
DESCRIPTION

Y Gaer is a small, earthwork defended enclosure located on a west-facing slope towards the end of a rounded inland promontory at 130m above sea level. To the north, west and south of the site the land falls away steeply; to the east there is a gentle rise away from the site. The enclosure is sub-rectangular in shape, approximately 40m across. A bank, approximately 8m wide and up to 0.6m high on the west side, but lower elsewhere, defines the enclosure. There is an entrance on the south side. A hedge-bank overlies the bank on the north and east sides. It is under improved pasture.

K Murphy 29 November 2005



Ground photograph looking over earthworks.



This map is reproduced from the Ordnance Survey map by the National Assembly for Wales with the permission of The Controller of Her Majesty's Stationery Office. Crown Copyright. All rights reserved.
 Unauthorised reproduction infringes Crown Copyright and may lead to prosecution and civil proceedings.
 Licence No. GD 272221

Scale: 1:500

1856 MYNACHLOG-UCHAF

PRN 1856 NGR SN40795215

SITE NAME MYNACHLOG-UCHAF

SITE TYPE DEFENDED ENCLOSURE FORM Earthwork

PERIOD Iron Age; Roman CONDITION D

SITE STATUS

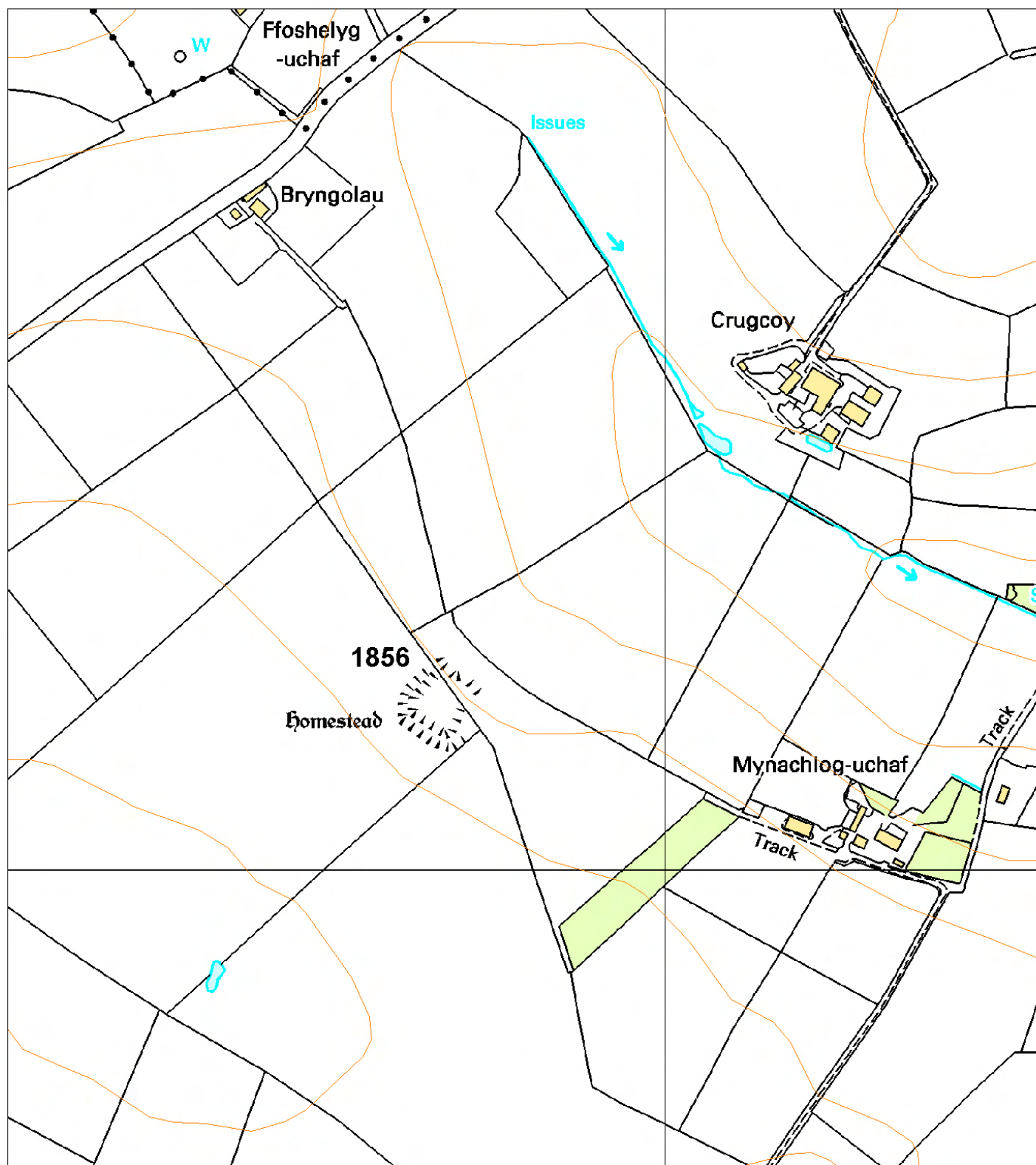
DESCRIPTION

This is a small, earthwork, rectangular defended enclosure lying on gentle northeast-facing slopes at 270m above sea level. A hedge-bank divides the site into two unequal portions. The earthworks are better preserved in the field to the southwest of the hedge-bank; they are barely recognisable in field to the northeast. The enclosure measures approximately 50m by 40m internally. A bank with traces of an external ditch defines the site. The bank is spread and survives to only 0.2m - 0.3m high. The ditch is barely traceable. There is a low counterscarp bank to the northwest and southwest. According to the Ordnance Survey in 1974 a simple entrance lay in the northeast side. This is not now visible. The OS also reported that the earthworks were much more prominent in c. 1960. The site is under improved pasture, but was under arable cultivation in 1974.

K Murphy 21 November 2005



Ground photograph looking over slight earthworks.



This map is reproduced from the Ordnance Survey map by the National Assembly for Wales with the permission of The Controller of Her Majesty's Stationery Office. Crown Copyright. All rights reserved.
 Unauthorised reproduction infringes Crown Copyright and may lead to prosecution and civil proceedings.
 Licence No. GD 272221

Scale: 1:500

1859 CASTELL MOEDDYN

PRN 1859 NGR SN48505194

SITE NAME CASTELL MOEDDIN

SITE TYPE HILLFORT FORM Earthwork

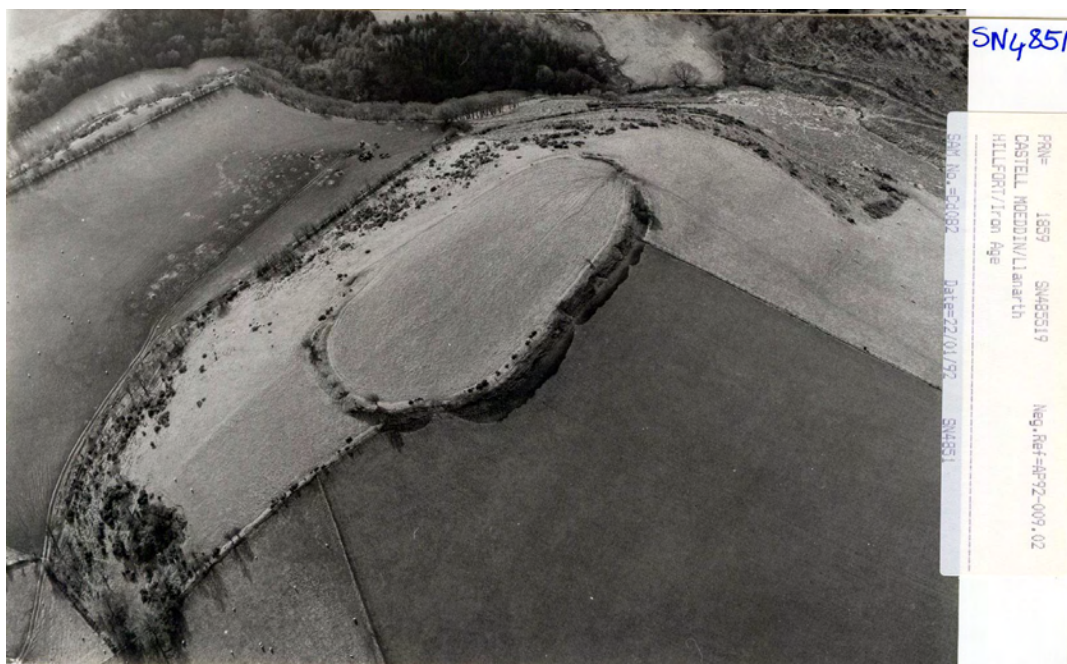
PERIOD Iron Age CONDITION C

SITE STATUS SAM;ACK

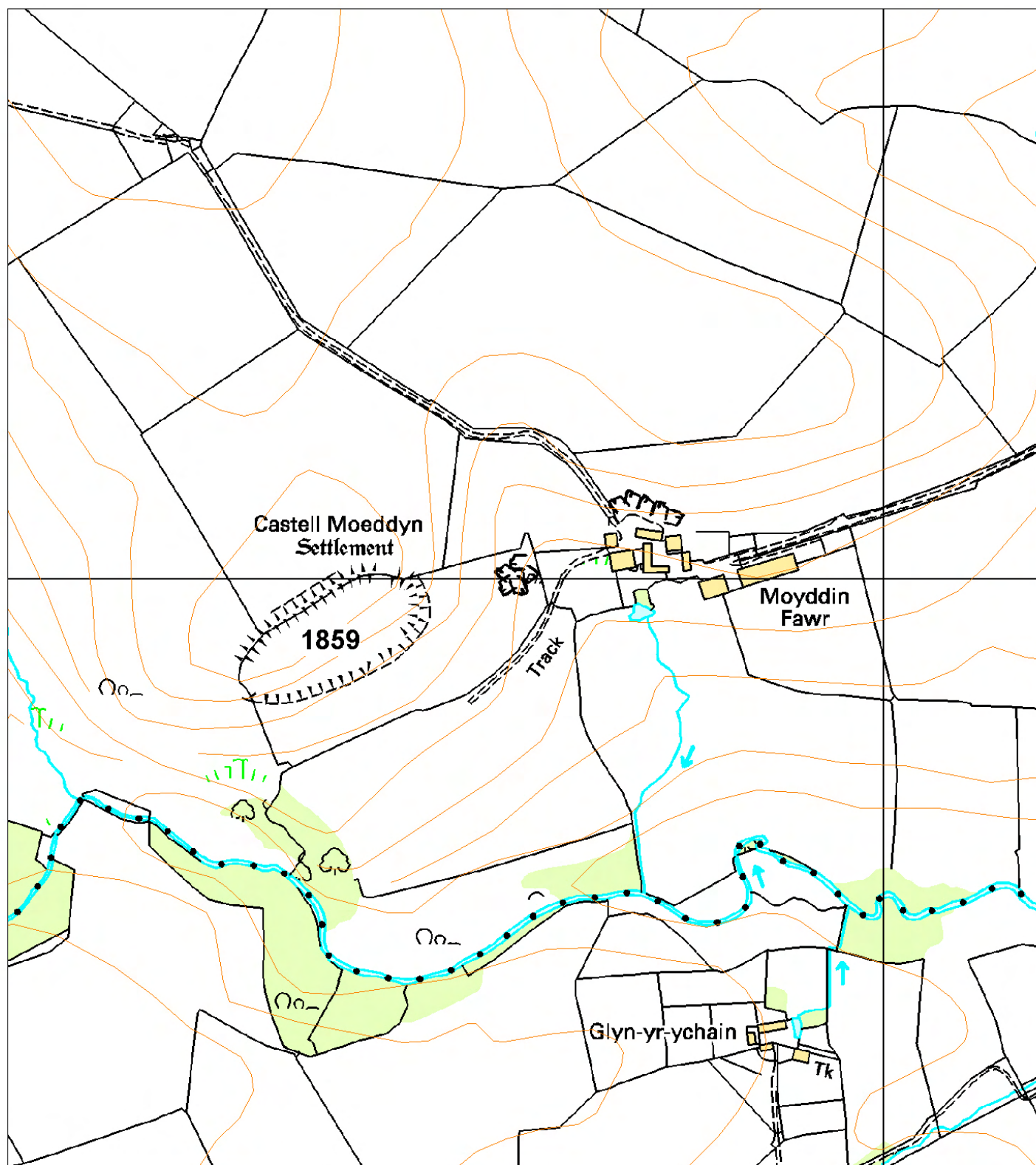
DESCRIPTION

Castell Moeddyn lies on the southern side of a rounded hilltop at 270m above sea level in a strong naturally defended location. It is strongly defended by a rampart on the north, easily approachable side by, but more weakly defended along the steep slopes to the southwest, south and east. On these sides the hill falls steeply away to the Afon Grannell over 70m below. At its best preserved section on the northwest side the defences consist of a bank, ditch and counterscarp bank 18m wide in total and up to 4m - 5m high. A simple entrance lies on the northeast side. The interior is level, and oval in shape, measuring 175m by 78m. The site is under improved pasture, with a little scrub growth on the banks.

K Murphy 15 December 2005 - taken from various sources.



Aerial photograph Cambria Archaeology.



This map is reproduced from the Ordnance Survey map by the National Assembly for Wales with the permission of The Controller of Her Majesty's Stationery Office. Crown Copyright. All rights reserved.
 Unauthorised reproduction infringes Crown Copyright and may lead to prosecution and civil proceedings.
 Licence No. GD 272221

Scale: 1:500

1861 CASTELL MOEDDYN FACH

PRN 1861 NGR SN47495142

SITE NAME CASTELL MOEDDIN FACH

SITE TYPE PROMONTORY FORT; CASTLE FORM Earthwork

PERIOD Iron Age; Medieval CONDITION B

SITE STATUS SAM

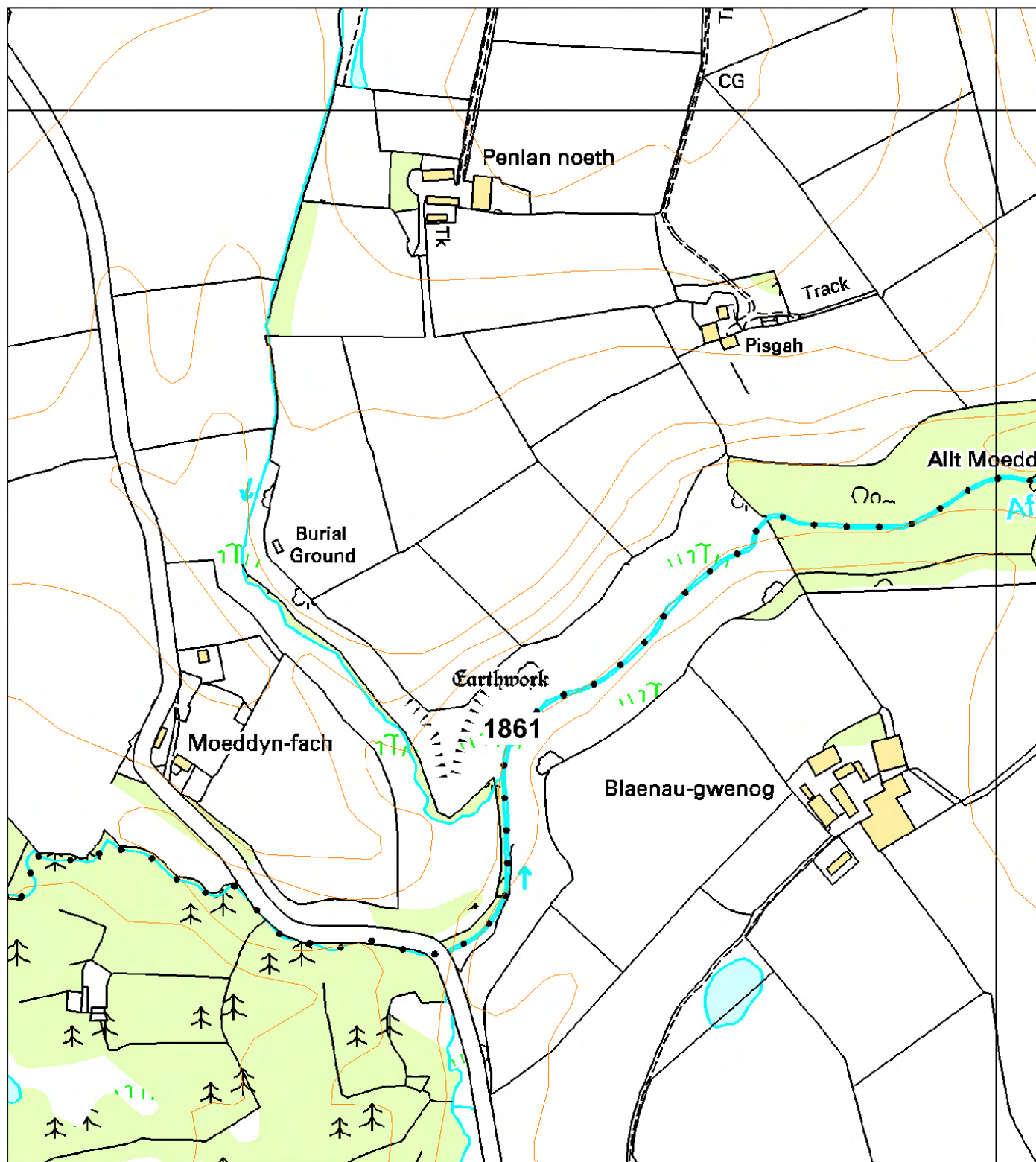
DESCRIPTION

Castell Moeddin Fach is a small inland promontory fort. A small triangular-shaped promontory with steep slopes on the west, south and east sides down to small streams is heavily defended by a bank and ditch on the north side. Overall this defence measures 35m long, 13m wide and about 2m high. There is a simple entrance about 4m wide in its centre. The interior area enclosed is very small, approximately 50m north - south and 25m east - west. It is probably an Iron Age fort, but King has listed it as a possible medieval castle site. The site is under bracken.

K Murphy 15 December 2005 - from various sources.



Aerial photograph Cambria Archaeology.



This map is reproduced from the Ordnance Survey map by the National Assembly for Wales with the permission of The Controller of Her Majesty's Stationery Office. Crown Copyright. All rights reserved.
 Unauthorised reproduction infringes Crown Copyright and may lead to prosecution and civil proceedings.
 Licence No. GD 272221

Scale: 1:500

11831 BRONFRE-GANOL

PRN 11831 NGR SN49135866

SITE NAME BRONFRE-GANOL

SITE TYPE DEFENDED ENCLOSURE FORM Earthwork; Cropmark

PERIOD Iron Age CONDITION D

SITE STATUS

DESCRIPTION

Bronfre-ganol enclosure lies at the southeast end of a rounded hill at 130m above sea level. To the northwest through to the south and around to the west the land falls steeply away from the site. On the ground there is little trace of this site apart from a steep break of slope on the southeast side up to 1.5m high, now overlain by a hedge-bank, which may be part of a defensive circuit.

Aerial photographs, however, show what seem to be a circular cropmark circular enclosure 110m diameter - the earthworks, above, forming the southeast side of the enclosure. The northwest side of the enclosure is defined by concentric cropmark ditches, closely spaced - about 10m apart. The location of the entrance is unknown. In 2005, the site was under improved pasture.

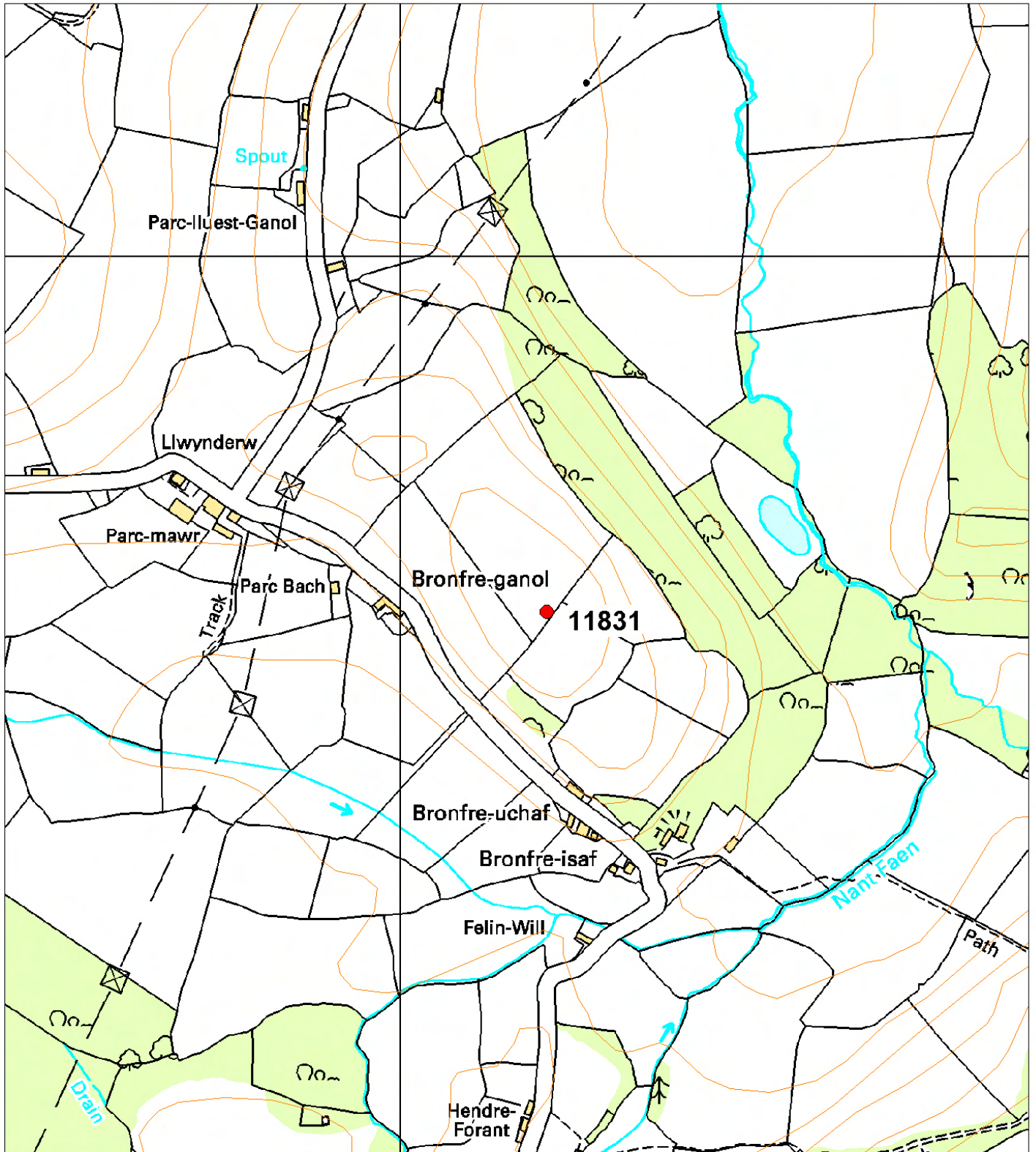
K Murphy 25 May 2005



Aerial photograph Cambria Archaeology.



Ground photograph looking at defence? on southeast side of site.



This map is reproduced from the Ordnance Survey map by the National Assembly for Wales with the permission of The Controller of Her Majesty's Stationery Office. Crown Copyright. All rights reserved.
 Unauthorised reproduction infringes Crown Copyright and may lead to prosecution and civil proceedings.
 Licence No. GD 272221

Scale: 1:500

12280 PEN-Y-GAER

PRN 12280 NGR SN43005252

SITE NAME PEN Y GAER; GAER RHYDLYDAN

SITE TYPE DEFENDED ENCLOSURE FORM Earthwork

PERIOD Iron Age CONDITION C

SITE STATUS

DESCRIPTION

Aerial photographs show the bank of an oval earthwork enclosure on a rounded hill at 270m above sea level. To the south and east of the site the land falls steadily away to below 210m. To the northwest the land continues to rise gently to the summit of the rounded hill. The enclosure measures approximately 170m north - south and 110m east - west. An in-turned entrance lies on the southeast side. On the ground the earthwork is visible as a bank 12m - 15m wide and no more than 0.5m high. It is best preserved on the north side. There is no trace of a ditch. The east side of the entrance terminal is clearly visible, the west side less so, and there is no trace on the ground of the in-turned terminal visible on the aerial photographs. In 2005, the site was under improved pasture, but is occasionally ploughed. A few years ago the site owner (Rhydlydan Farm) reported that when ploughed the soil within north part of the enclosure was a different colour from that outside and within the rest of the enclosure.

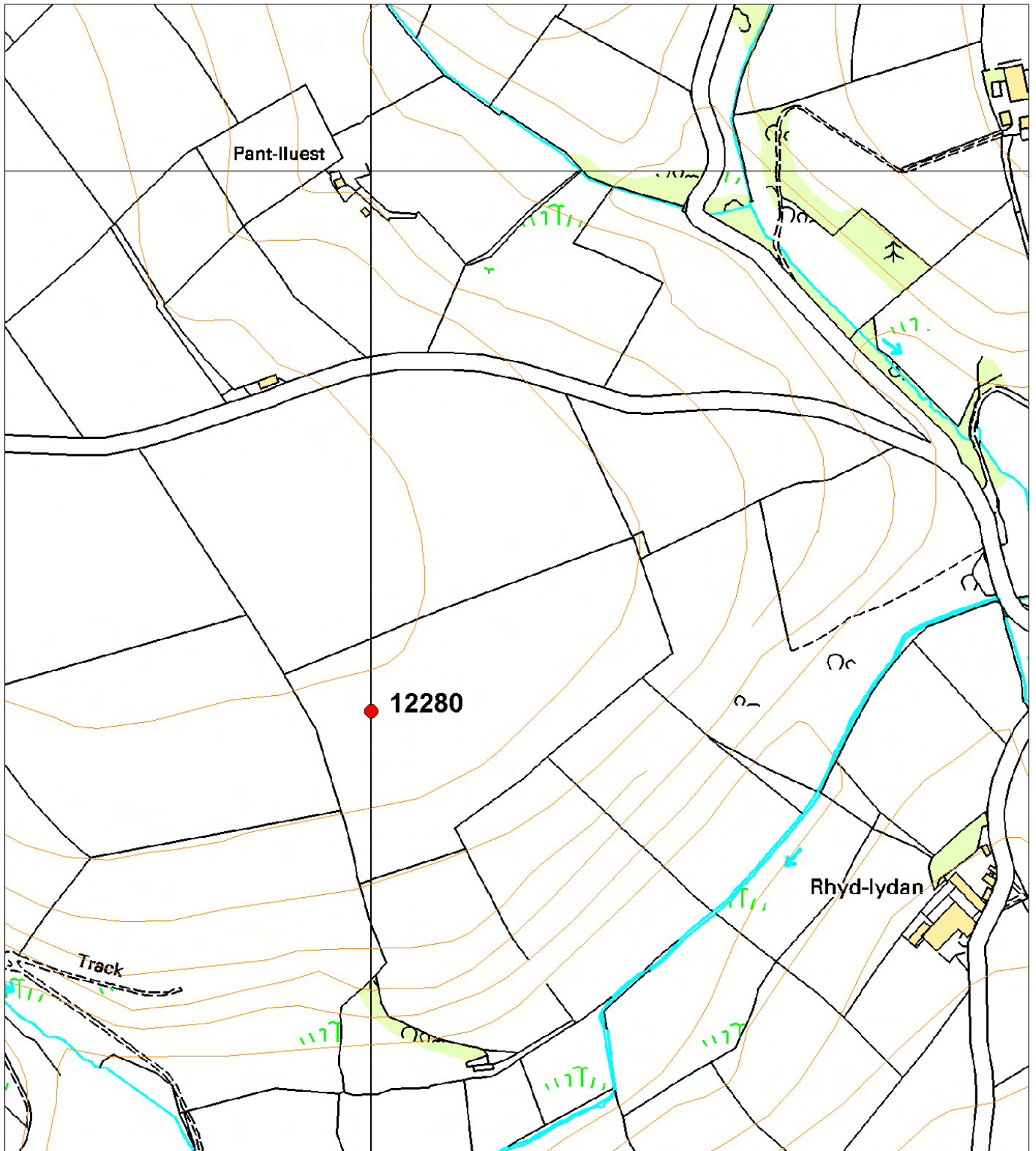
K Murphy 23 November 2005



Aerial photograph RCAHMW Crown Copyright © reference 2001-cs-1442.



Ground photograph showing slight earthworks of enclosure.



This map is reproduced from the Ordnance Survey map by the National Assembly for Wales with the permission of The Controller of Her Majesty's Stationery Office. Crown Copyright. All rights reserved.
Unauthorised reproduction infringes Crown Copyright and may lead to prosecution and civil proceedings.
Licence No. GD 272221

Scale: 1:500

14244 PANTEG

PRN 14244 NGR SN453623

SITE NAME PANT-TEG

SITE TYPE DEFENDED ENCLOSURE FORM Cropmark

PERIOD Iron Age CONDITION D

SITE STATUS

DESCRIPTION

Pant-teg is a cropmark enclosure lying on a small rounded local hilltop at 80m above sea level. To the north and east the land falls sharply away from the site. To the southwest the land falls gently away by a few metres into a saddle before climbing gently but steadily. The site is overlooked on this side. It is a concentric cropmark enclosure, with no clear earthwork or other surface evidence. On aerial photographs the inner enclosure is marked by a cropmark ditch, and is circular approximately 70m diameter, with a wide northeast facing entrance. A ditched track-way approaches the entrance up the steep slope from the northeast. The ditch on the east side of the track-way seems to curve out and form the ditch of the outer concentric enclosure, or 'banjo' enclosure. Only a short section of this concentric enclosure is visible on the east side, and perhaps a length on the northwest side, but if projected it would have a diameter of c. 170m. This outer enclosure runs around the slopes of the hill. In 2005, this site was examined from a public footpath. There was no surface evidence for the ditched track-way or the outer enclosure. Slight undulations may mark the inner ditch, but equally these may be geological. In 2005, the site was under improved pasture.

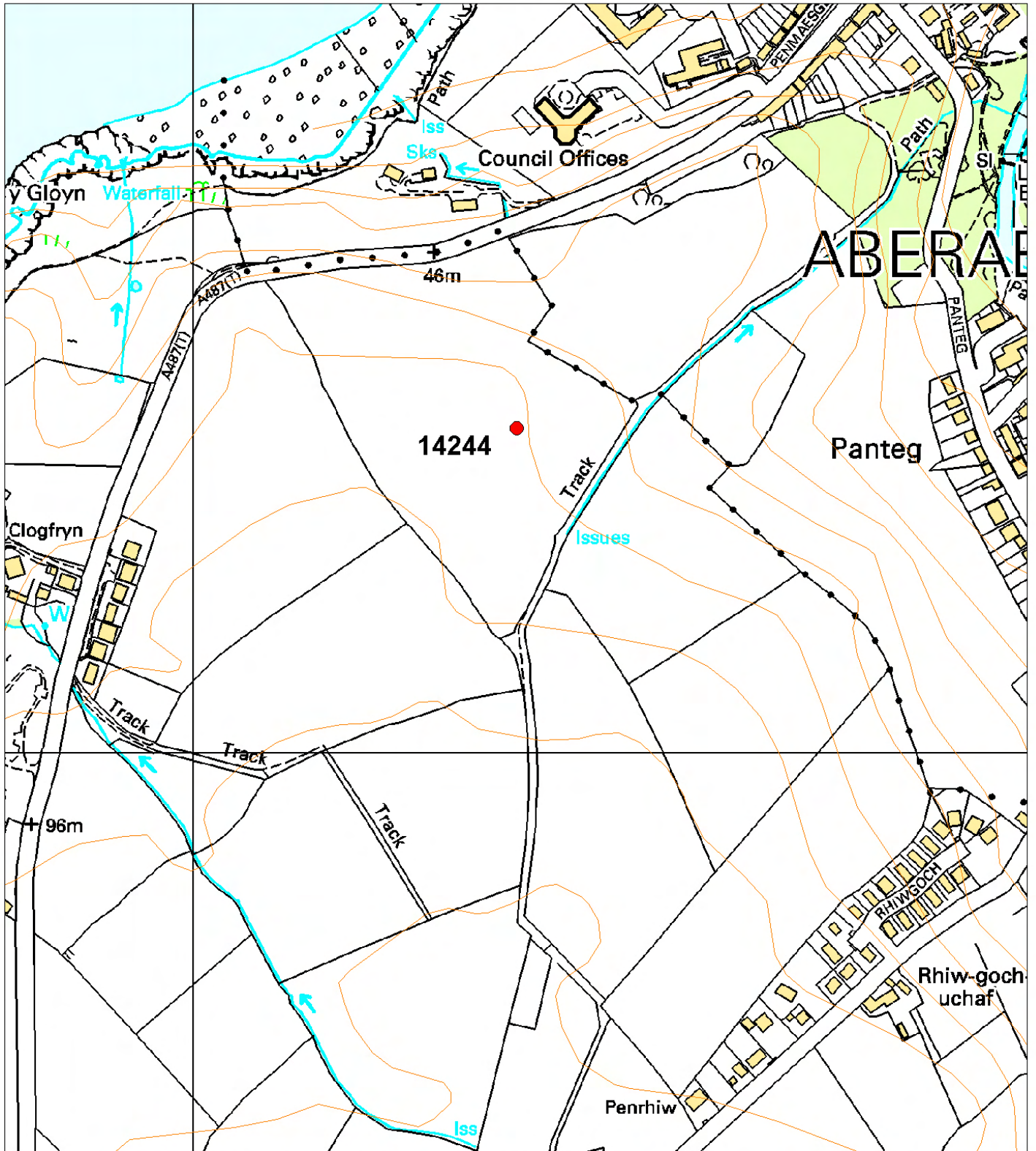
K Murphy 25 May 2005



Aerial photograph RCAHMMW Crown Copyright © reference 2003-cs-1442.



Ground photograph looking towards cropmark enclosure.



This map is reproduced from the Ordnance Survey map by the National Assembly for Wales with the permission of The Controller of Her Majesty's Stationery Office. Crown Copyright. All rights reserved.
 Unauthorised reproduction infringes Crown Copyright and may lead to prosecution and civil proceedings.
 Licence No. GD 272221

Scale: 1:500

56246 LLANERCHAERON

PRN 56246 NGR SN47636004

SITE NAME LLANERCHAERON ENCLOSURE

SITE TYPE DEFENDED ENCLOSURE FORM Buried Feature

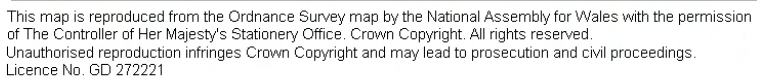
PERIOD Iron Age; Roman CONDITION D

SITE STATUS

DESCRIPTION

A geophysical survey undertaken by ArchaeoPhysica Ltd for the National Trust detected a defended enclosure. The enclosure is defined by a ditch - there is no trace of a bank. The enclosure is sub-rectangular, c. 60m north - south and 40m east west. The entrance lies towards the northern end of the west side. It is a simple gap, with a slight out-turn to the north ditch terminal. Towards the southwest corner of the site a circular anomaly c. 15m diameter probably marks the site of a roundhouse. The southwest corner of the site has been eroded by River Aeron. The site lies on the floodplain or a low terrace of the river - there are traces of old river channels in the vicinity of the site.

K Murphy 3 March 2006



Scale: 1:500

