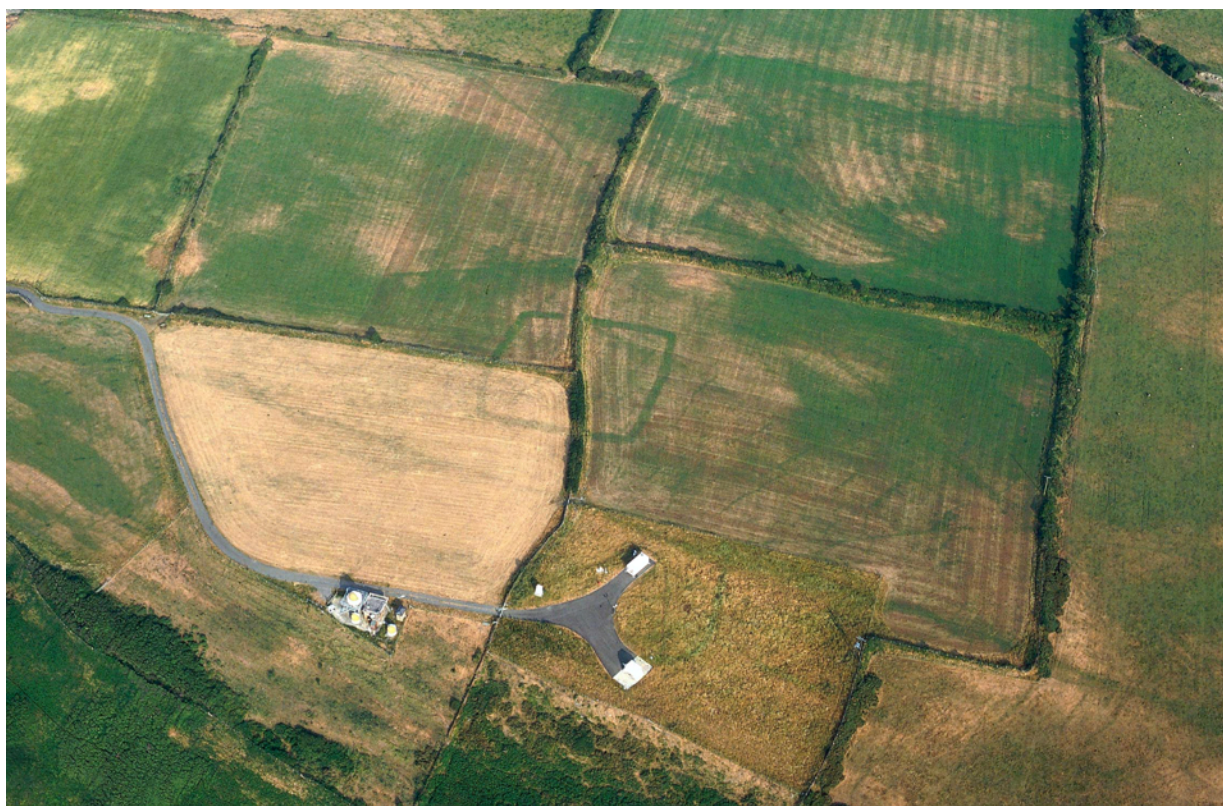


# **A SURVEY OF DEFENDED ENCLOSURES IN CEREDIGION, 2006: GAZETTEER OF ORDNANCE SURVEY GRID SQUARE SN25**



Paratowyd gan Archaeoleg  
Cambria  
Ar gyfer Cadw  
Prepared by Cambria  
Archaeology

# ARCHAEOLEG CAMBRIA ARCHAEOLOGY

RHIF YR ADRODDIAD / REPORT NO. 2006/20  
RHIF Y PROSIECT / PROJECT RECORD NO. 54269

Mawrth 2006  
March 2006

## A SURVEY OF DEFENDED ENCLOSURES IN CEREDIGION, 2006: GAZETTEER OF ORDNANCE SURVEY GRID SQUARE SN25

Gan / By

K Murphy, R Ramsey and M Page

*Archaeoleg Cambria yw enw marchnata Ymddiriedolaeth Archaeolegol Dyfed Cyfyngedig.  
Cambria Archaeology is the marketing name of the Dyfed Archaeological Trust Limited.*

*Paratowyd yr adroddiad yma at ddefnydd y cwsmer yn unig. Ni dderbynnir cyfrifoldeb gan Archaeoleg Cambria am ei ddefnyddio gan unrhyw berson na phersonau eraill a fydd yn ei ddarllen neu ddibynnu ar y gwybodaeth y mae'n ei gynnwys*

*The report has been prepared for the specific use of the client. Cambria Archaeology can accept no responsibility for its use by any other person or persons who may read it or rely on the information it contains.*



Llywodraeth Cynulliad Cymru  
Welsh Assembly Government

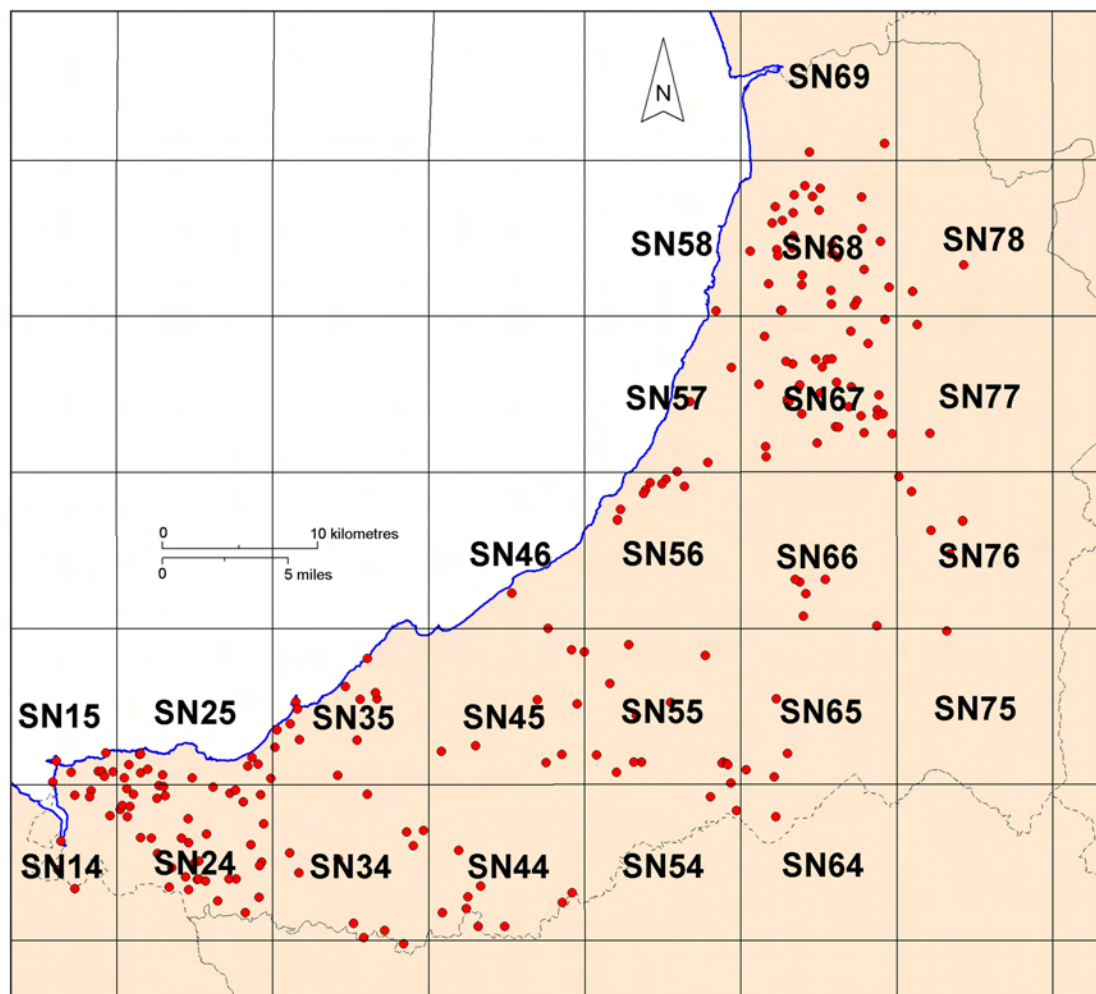
ARCHAEOLEG CAMBRIA  
Ymddiriedolaeth Archaeolegol Dyfed Cyf  
Neuadd y Sir, Stryd Caerfyrddin, Llandeilo, Sir Gaerfyrddin SA19  
6AF  
Ffon: Ymholiadau Cyffredinol 01558 823121  
Adran Rheoli Treftadaeth 01558 823131  
Ffacs: 01558 823133  
Ebost: cambria@acadat.com Gwefan: www.acadat.com

CAMBRIA ARCHAEOLOGY  
Dyfed Archaeological Trust Limited  
The Shire Hall, Carmarthen Street, Llandeilo, Carmarthenshire  
SA19 6AF  
Tel: General Enquiries 01558 823121  
Heritage Management Section 01558 823131  
Fax: 01558 823133  
Email: cambria@acadat.com Website: www.acadat.com

## SITE GAZETTEER OF 10KM GRID SQUARE SN25

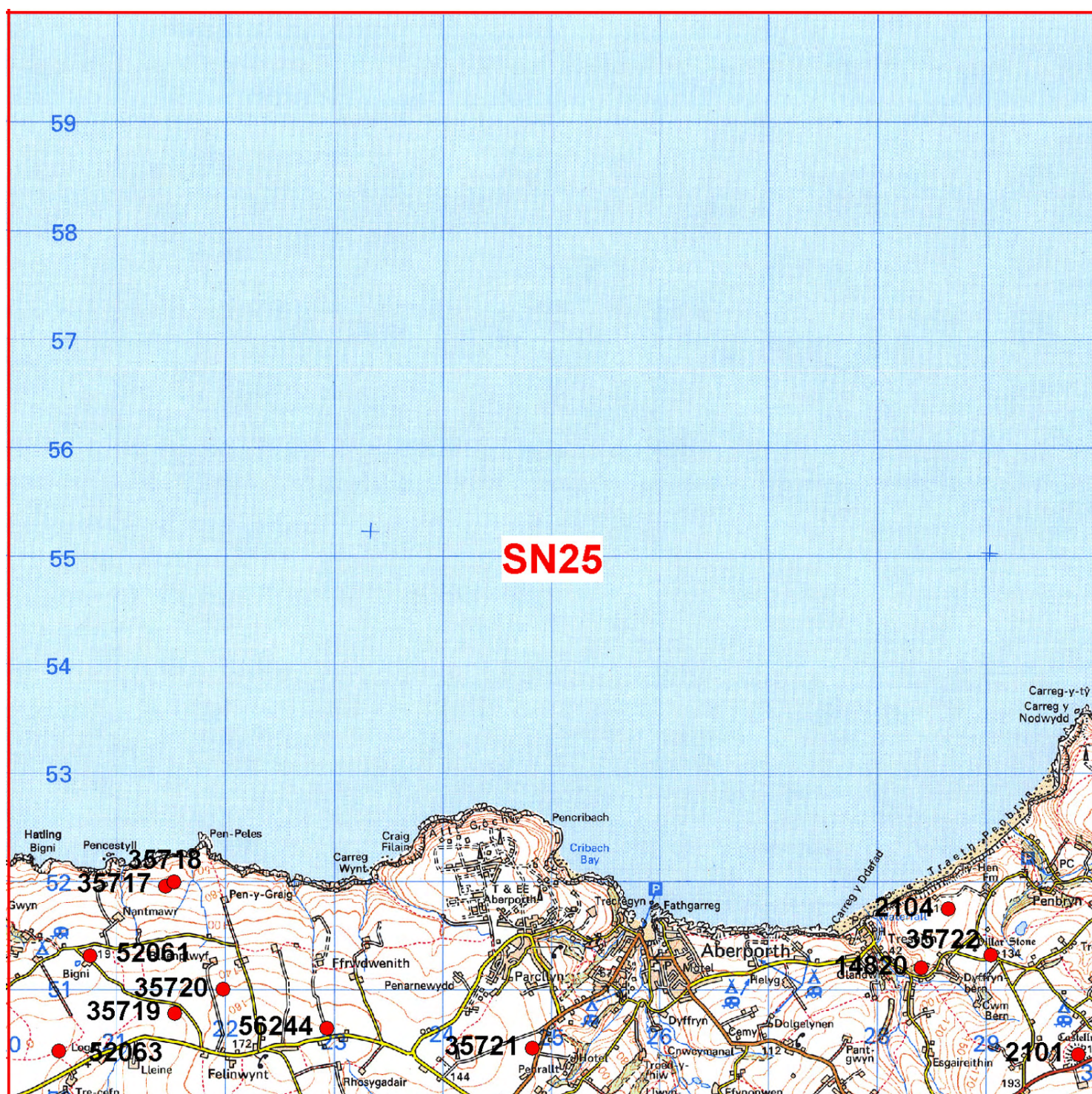
For ease of handling the site gazetteers have been arranged into Ordnance Survey 10km grid squares. Each gazetteer consists of one or more 1:50,000 maps showing the overall location of each site followed by the individual entries for each site. Each entry comprises: a printout from the Historic Environment Record, including a site description; a 1:500 map; and where available a ground photograph and an aerial photograph.

Many of the 1:500 maps show details of the site plotted from cropmarks shown on aerial photographs. These plots are supplied by RCAHMW Crown Copyright ©.



*Index to the gazetteers of defended enclosures and related sites. Gazetteers are arranged by 10km grid squares.*





1:50,000 Distribution map of sites in 10km grid square SN 25.

This map is reproduced from the Ordnance Survey map by the National Assembly for Wales with the permission of The Controller of Her Majesty's Stationery Office. Crown Copyright. All rights reserved. Unauthorised reproduction infringes Crown Copyright and may lead to prosecution and civil proceedings. Licence No. GD 272221



# 2101 CASTELL NADOLIG

PRN 2101 NGR SN29855040

SITE NAME CASTELL NADOLIG

SITE TYPE HILLFORT FORM Earthwork

PERIOD Iron Age CONDITION C

ITE STATUS SAM

## DESCRIPTION

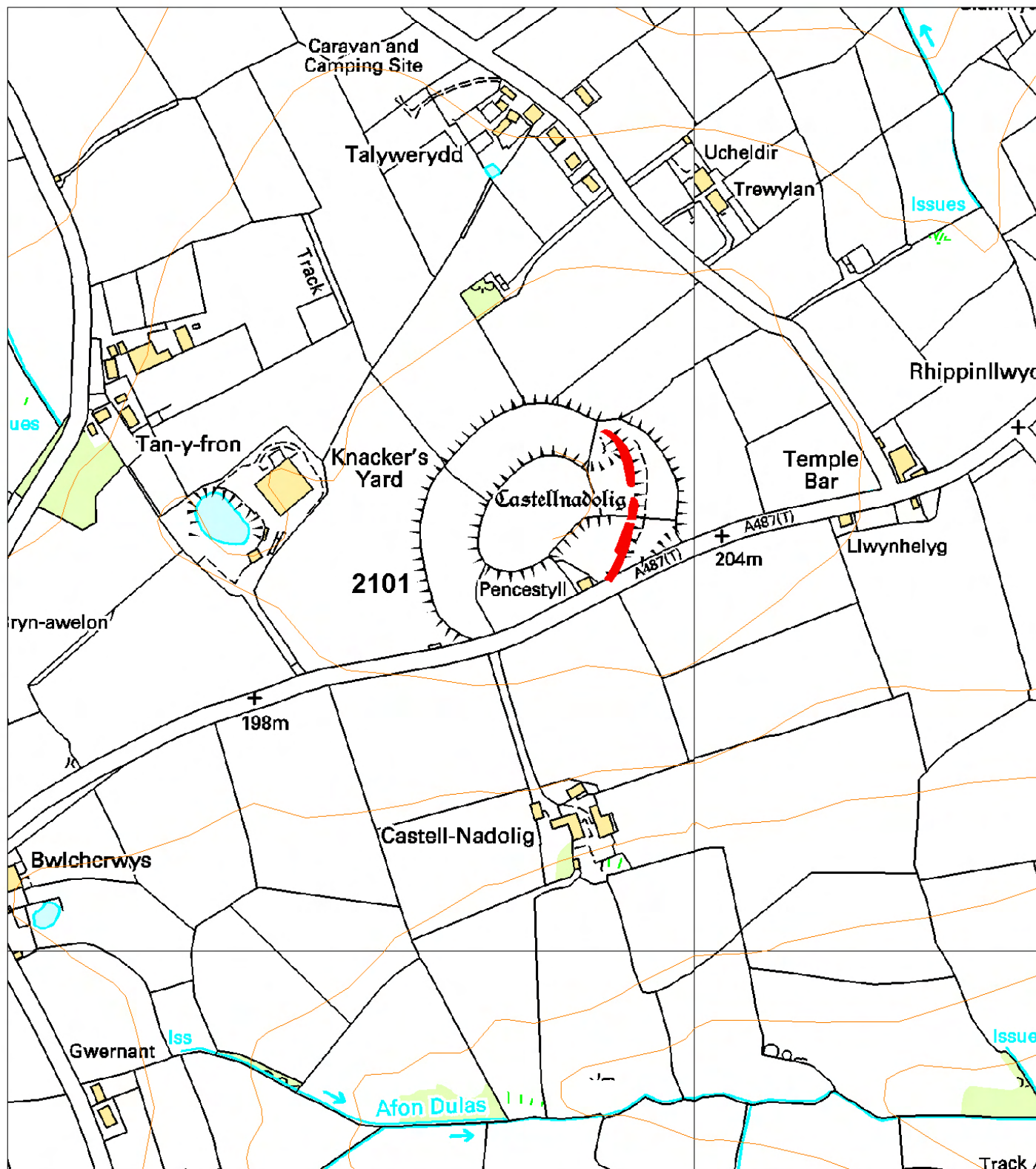
Castell Nadolig occupies a rounded hilltop, which rises to 210m above sea level. It is a concentric enclosure hillfort, with an oval inner enclosure approximately 120m by 70m on the summit of the hill, and outer enclosure 225m by 180m defined by a defensive circuit running around the foot of the hill. Hedge-banks lie along most of the inner and outer defensive circuit. The inner defence consists of a bank 6m wide and 1.5m high with a similar sized ditch outside it. A 40m wide gap on the east side seems to be original. A scarp running from the north side of this gap to the outer defence marks the line of a bank, while a hedge-bank running from the south side may also lie on a similar bank. Together these may be the flanking banks of an entrance track-way. The outer bank is slighter with no clear earthwork evidence of a ditch, although lush grass growth probably indicates its location. Aerial photographs show this ditch on the east side, with gap marking the entrance. On the east side a curving line of bank of similar dimensions to the outer bank defines a crescent-shaped annexe to the outer enclosure of c. 0.5ha. In 2005, the site was under improved pasture.

K Murphy 2005 - description taken from a variety of sources



Aerial photograph Cambria Archaeology.





This map is reproduced from the Ordnance Survey map by the National Assembly for Wales with the permission of The Controller of Her Majesty's Stationery Office. Crown Copyright. All rights reserved.  
 Unauthorised reproduction infringes Crown Copyright and may lead to prosecution and civil proceedings.  
 Licence No. GD 272221

Scale: 1:500

## 2104 TY-HEN CAMP

PRN 2104 NGR SN28655174

SITE NAME TY-HEN CAMP

SITE TYPE DEFENDED ENCLOSURE FORM Cropmark

PERIOD Iron Age; Roman CONDITION D

SITE STATUS

DESCRIPTION

Ty-hen is a small cropmark enclosure for which there is no earthwork or other surface evidence. It lies in three separate fields, and is overlain by substantial stone/earth hedge-banks. Its location is unusual. It lies on a natural shelf, approximately 70m southeast and 10m below a low summit. Land falls gently but steadily away to the southwest, south, southeast and east, giving wide-ranging views in these directions. The low summit shelters the site from the prevailing sea winds. Aerial photographs show a sharp-cornered rectangular, almost square, enclosure, defined by a cropmark ditch. The enclosure measures c. 48m square. There is no sign of an entrance, but this could lie beneath one of the hedge-banks. In 2005, the site was under permanent pasture.

K Murphy 15 November 2005

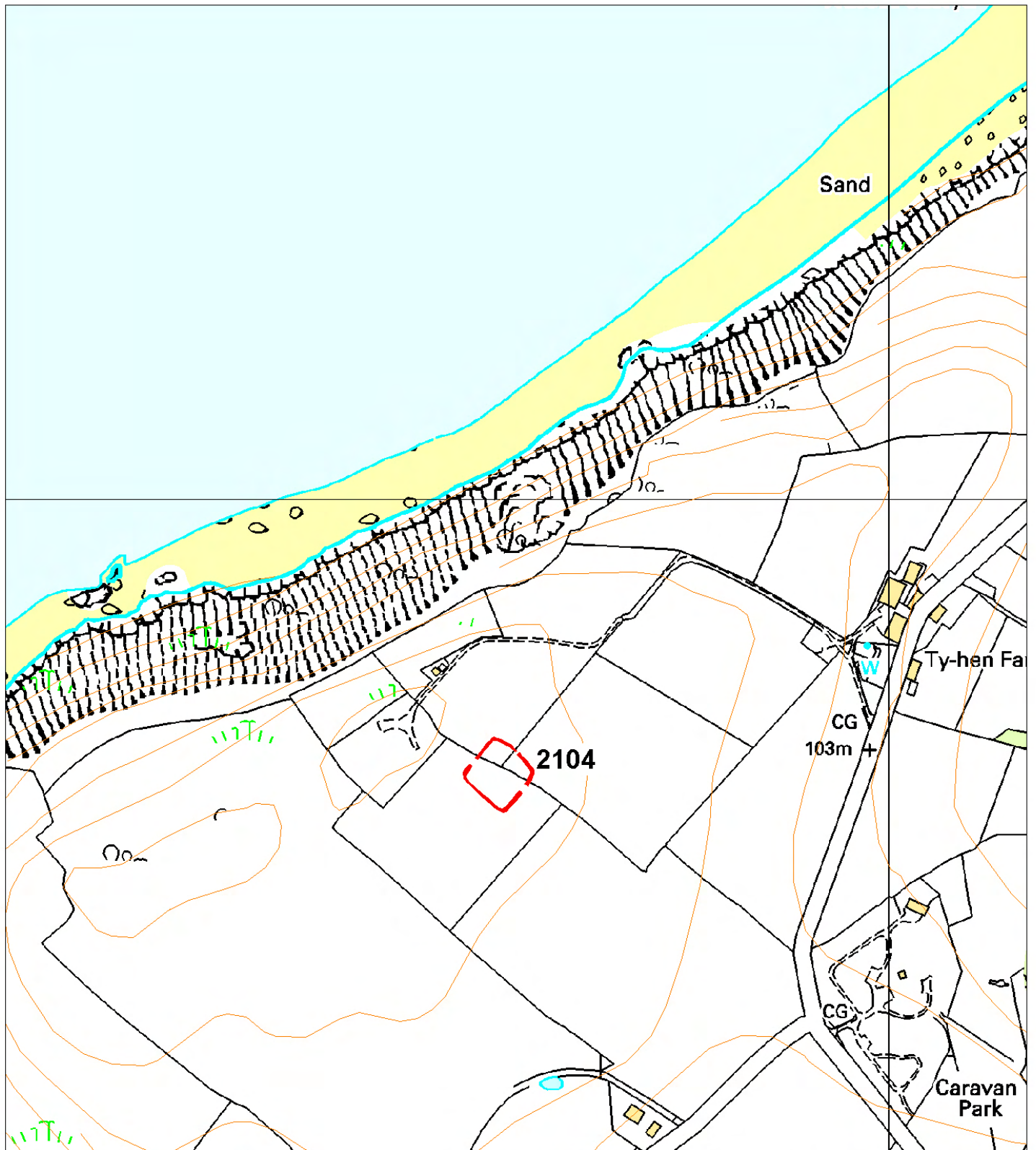




Aerial photograph RCAHMW Crown Copyright © reference 95-cs-1736.



Ground photograph looking over site of cropmark.



This map is reproduced from the Ordnance Survey map by the National Assembly for Wales with the permission of The Controller of Her Majesty's Stationery Office. Crown Copyright. All rights reserved.  
Unauthorised reproduction infringes Crown Copyright and may lead to prosecution and civil proceedings.  
Licence No. GD 272221

Scale: 1:500



# 14820 DYFFRYN SAITH

PRN 14820 NGR SN284512

SITE NAME DYFFRYN SAITH

SITE TYPE PROMONTORY FORT FORM Earthwork

PERIOD Iron Age CONDITION C

SITE STATUS

## DESCRIPTION

Dyffryn Saith is a small fort lying on an inland promontory at 105m above sea level. A defence cuts off a triangular-shaped area of ground approximately 80m east - west and 60m north - south. To the north, west and south the fort is naturally defended by steep slopes, which fall away into a small valley. To the northeast the land is fairly level before it begins to rise gently c. 100m from the fort. This easily approached side is defended. On the ground a curving length of bank, approximately 65m long, 15m wide and up to 0.7m high runs from the edge of the steep slope on the north side to just short of the edge of the steep slope on the south side. A linear depression up to 0.2m deep and 5m wide on the outside (east) of the bank marks the course of a silted ditch. A linear earthwork bank running east - west within the fort interior may be associated with the fort, or it may be a rocky spine. The fort interior slopes down gently either side of this bank. In the southeast corner of the interior a platform c. 10m diameter may be a house platform. On aerial photographs the fort ditch shows as a clear cropmark, with slight parching indicating the site of the bank. A c. 20m long second cropmark ditch lies outside the main ditch on the southeast side. There is no obvious entrance, but it seems most likely to lie between the end of the defensive bank and the edge of the steep slope on the south side, with perhaps the outer ditch an extra defensive element to the entrance. In 2005, the site was under permanent pasture.

K Murphy 15 November 2005

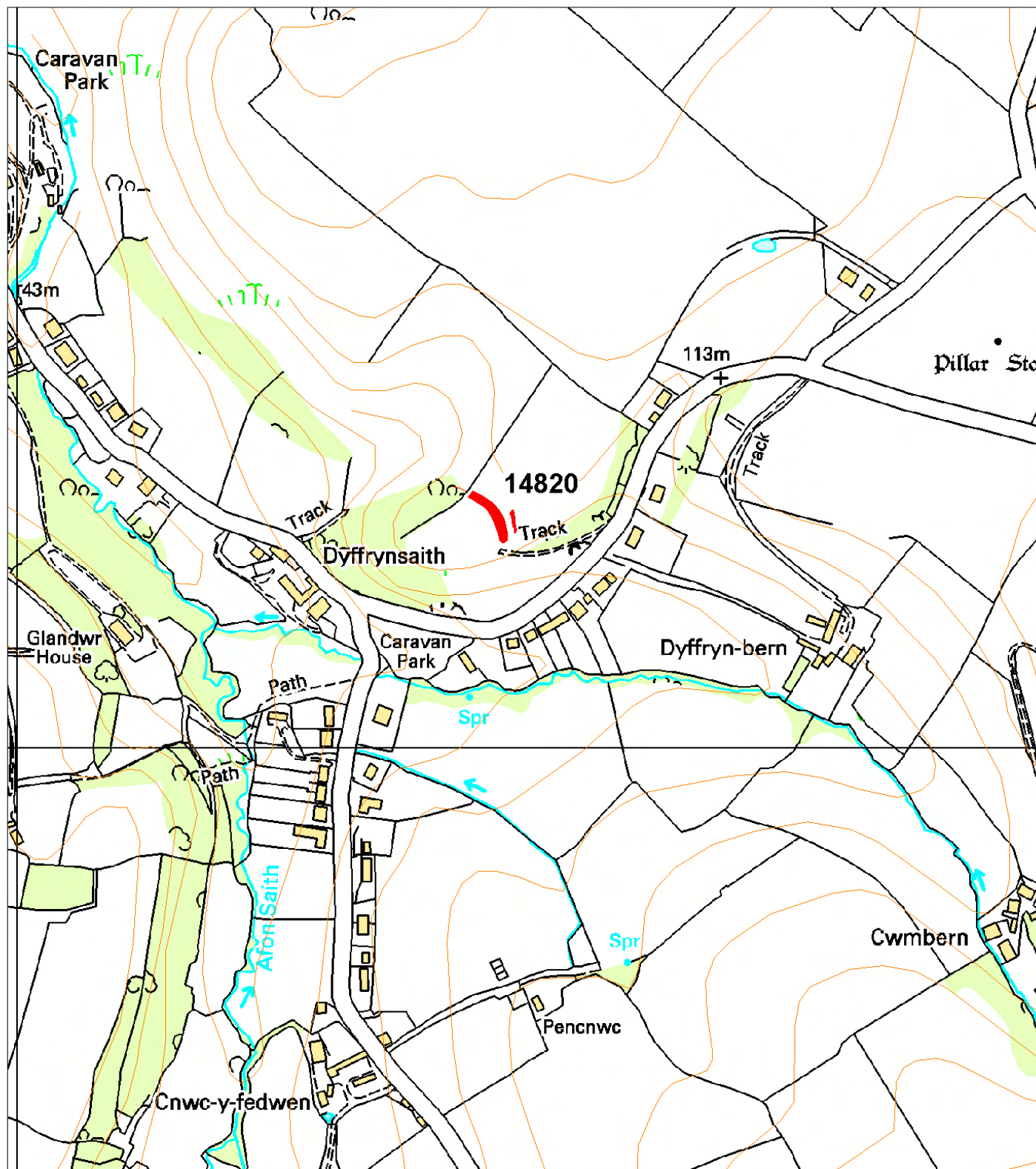


Aerial photograph RCAHMW Crown Copyright © reference 95-cs-1737.



Ground photograph looking along earthwork defences.





This map is reproduced from the Ordnance Survey map by the National Assembly for Wales with the permission of The Controller of Her Majesty's Stationery Office. Crown Copyright. All rights reserved.  
 Unauthorised reproduction infringes Crown Copyright and may lead to prosecution and civil proceedings.  
 Licence No. GD 272221

Scale: 1:500

# 35717 NANT BACH I

PRN 35717 NGR SN21445195

SITE NAME NANT BACH I

SITE TYPE DEFENDED ENCLOSURE FORM Cropmark

PERIOD Iron Age CONDITION D

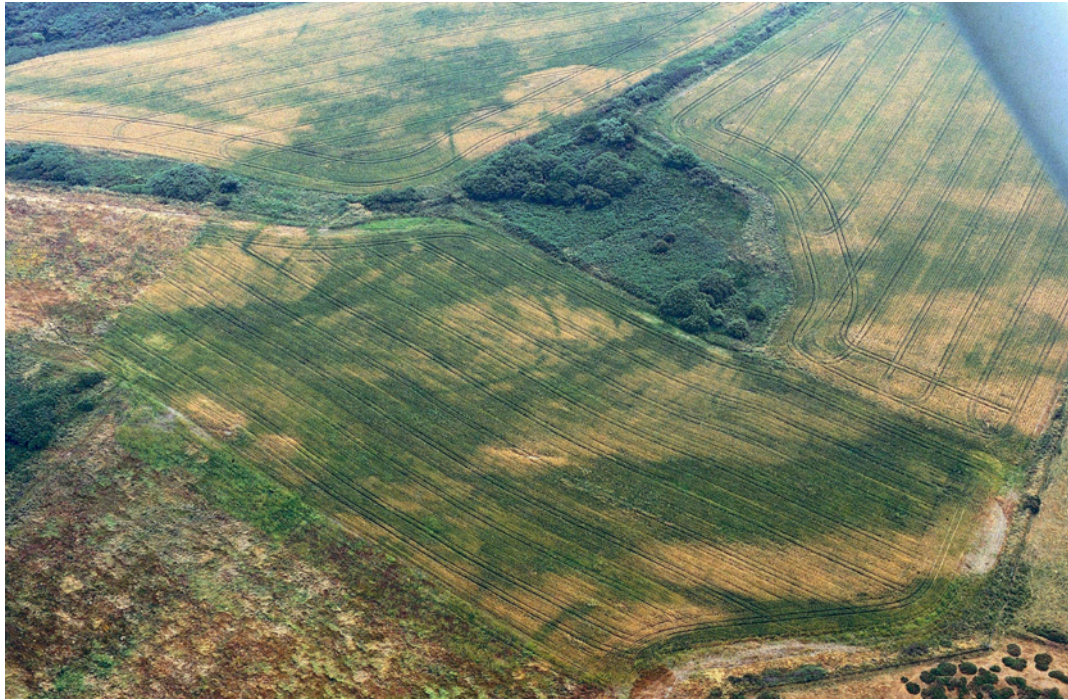
SITE STATUS

DESCRIPTION

A cropmark ditch showing in a barley crop on aerial photographs defines a possible sub-circular enclosure c. 60m diameter. Only the west and south sides of the enclosure ditch are visible, with an entrance in the southwest side. The site lies on a gently sloping coastal slope at 70m above sea level. There are no earthworks or other surface evidence for this site. In 2005, the site was under an arable crop.

K Murphy 15 November 2005





Aerial photograph RCAHMW Crown Copyright © reference 95-cs-1128.



Ground photograph looking towards site of cropmark enclosures 35717 and 35718.

## 35718 NANT BACH II

PRN 35718 NGR SN21525199

SITE NAME NANT BACH II

SITE TYPE ENCLOSURE FORM Cropmark

PERIOD Iron Age?;Roman? CONDITION D

SITE STATUS

### DESCRIPTION

Aerial photographs show a cropmark ditch of a small, sharp-cornered rectangular, almost square, enclosure in a barley crop. The enclosure is approximately 28m northeast - southwest and 25m northwest - southeast, with an entrance in its southwest site. A splodge close to the centre of the enclosure may mark the site of a pit. It lies on a gently-sloping coastal slope at 65m above sea level. In 2005, the site was under a barely crop. The exact character of this site is unclear, as it seems a little small for a defended enclosure, which is the obvious explanation.

K Murphy 15 November 2005

# 35719 BLAEN PLWYF I

PRN 35719 NGR SN21535078

SITE NAME BLAEN-PLWYF I

SITE TYPE DEFENDED ENCLOSURE FORM Cropmark

PERIOD Iron Age CONDITION D

SITE STATUS

## DESCRIPTION

This is small, sub-circular enclosure which shows as a cropmark on aerial photographs, but which has no earthwork or other surface presence. It is situated on fairly level ground at 140m above sea level, but at the site itself the land rises a few metres onto a knoll. To the southwest, south, east and northeast of the site land falls away gently but steadily, giving wide-ranging views. To the west the land rises gently. The cropmark ditch which defines the site seems to run around this knoll. The enclosure is sub-circular, a flattened egg-shape in plan, approximately 40m by 30m with an entrance in the northeast side. Circular cropmarks within the enclosure may mark the site of round-houses, but this is not certain and they may be natural markings. The site was under improved pasture in 2005.

K Murphy 15 November 2005

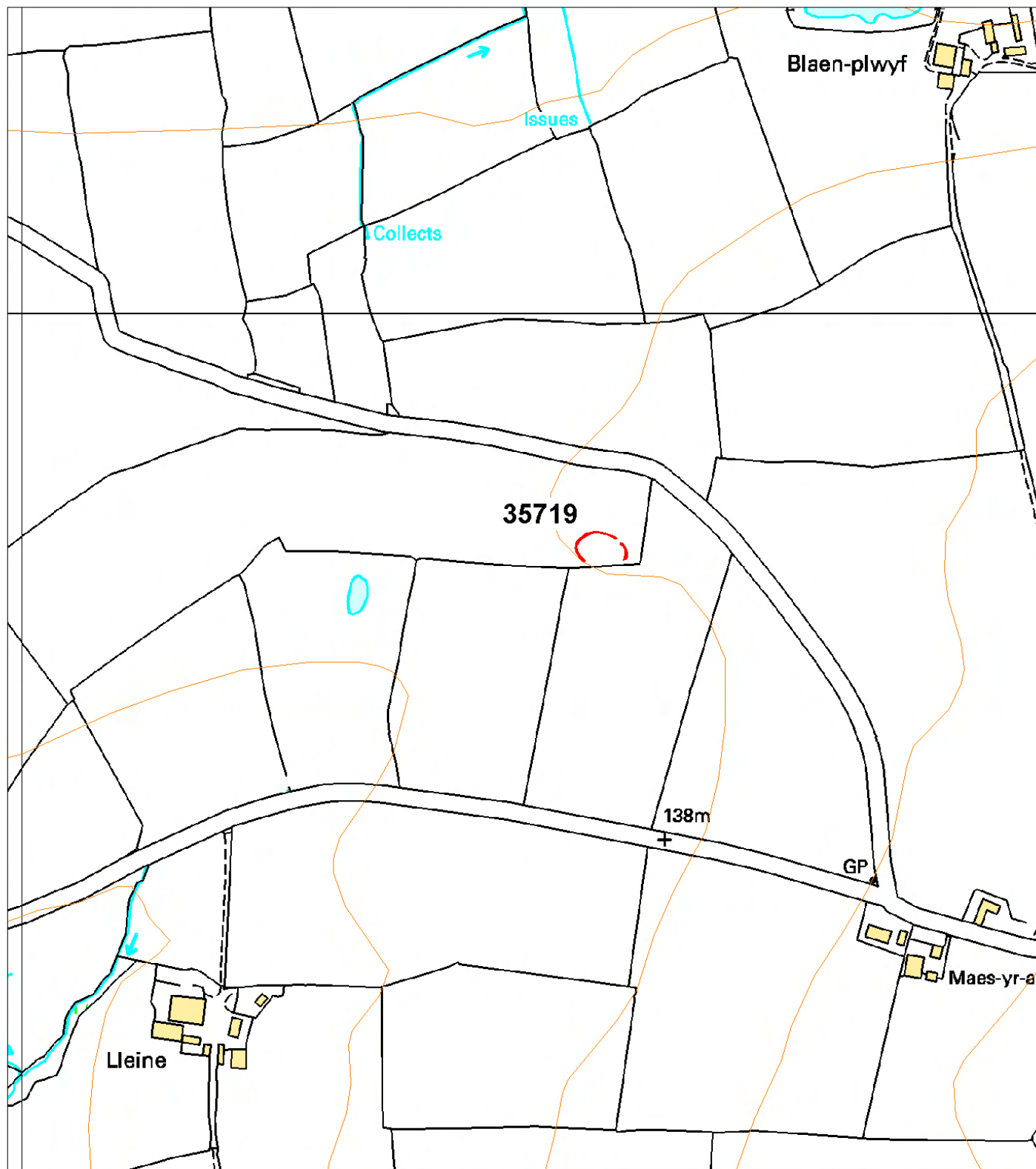




Aerial photograph RCAHMW Crown Copyright © reference 95-cs-1744.



Ground photograph looking towards site of cropmark enclosure.



This map is reproduced from the Ordnance Survey map by the National Assembly for Wales with the permission of The Controller of Her Majesty's Stationery Office. Crown Copyright. All rights reserved.  
Unauthorised reproduction infringes Crown Copyright and may lead to prosecution and civil proceedings.  
Licence No. GD 272221

Scale: 1:500

## 35720 BLAEN PLWYF II

PRN 35720 NGR SN21975100

SITE NAME BLAEN-PLWYF II

SITE TYPE DEFENDED ENCLOSURE FORM Cropmark

PERIOD Iron Age; Roman CONDITION D

SITE STATUS

DESCRIPTION

A short length of curving ditch may indicate the site of a defended enclosure. The ditch is visible in a barley crop on aerial photographs, but there is no earthwork or other surface evidence apparent. The cropmark is of a curving length of ditch, which may be the north side and part of the west side of an enclosure. The site is on a gentle north-facing slope overlooking Cardigan Bay at 150m above sea level. In 2005, the site was under improved pasture.

K Murphy 15 November 2005

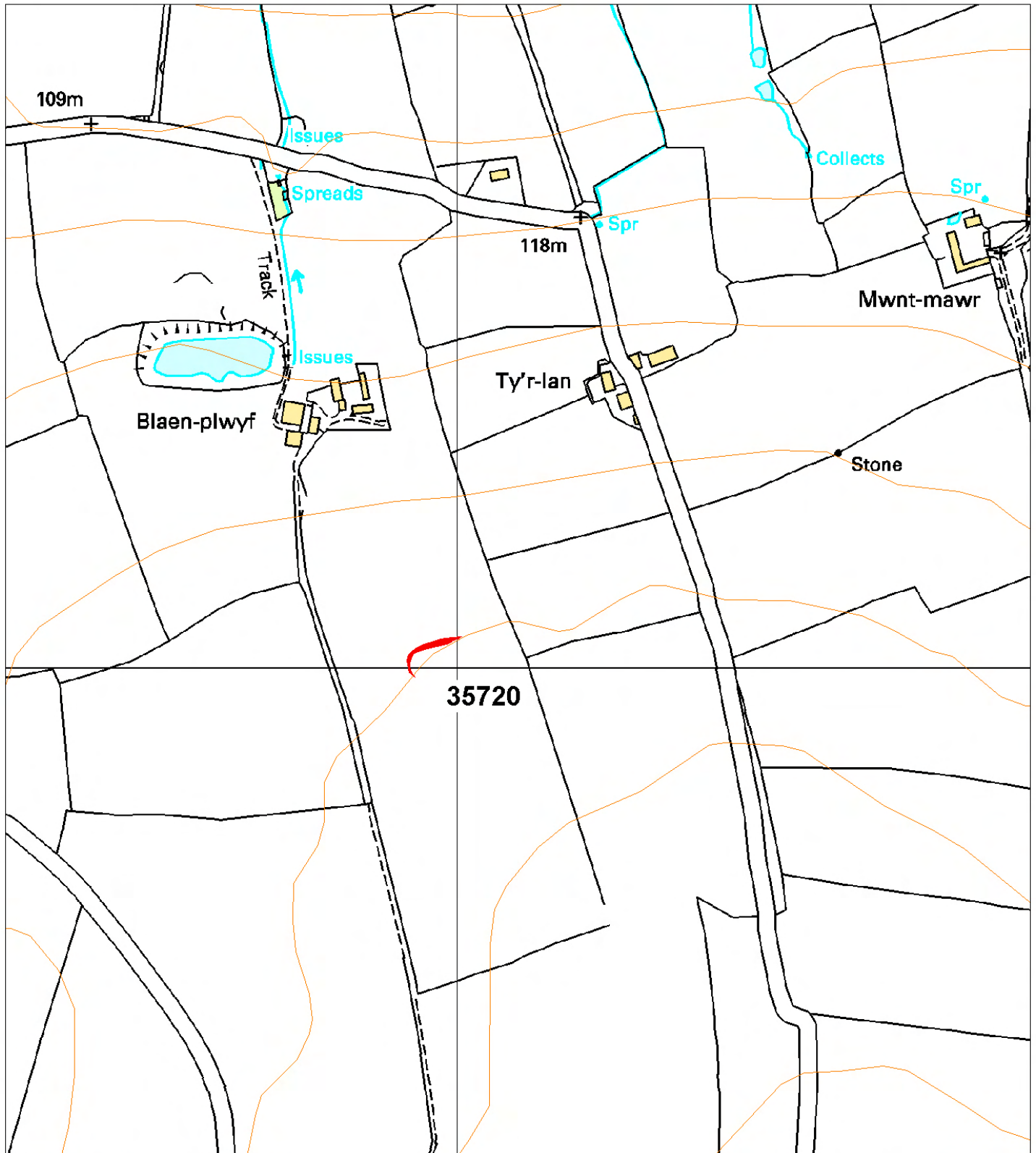




Aerial photograph RCAHMW Crown Copyright © reference 955157-42.



Ground photograph looking over site of cropmark enclosure.



This map is reproduced from the Ordnance Survey map by the National Assembly for Wales with the permission of The Controller of Her Majesty's Stationery Office. Crown Copyright. All rights reserved. Unauthorised reproduction infringes Crown Copyright and may lead to prosecution and civil proceedings. Licence No. GD 272221

Scale: 1:500

# 35721 BRYN-AMLWG

PRN 35721 NGR SN24825046

SITE NAME BRYN-AMLWG

SITE TYPE DEFENDED ENCLOSURE FORM Cropmark

PERIOD Iron Age; Roman CONDITION D

## SITE STATUS

## DESCRIPTION

A cropmark enclosure is visible on aerial photographs. The enclosure is sub-rectangular in plan, approximately 34m east - west and 25m north - south. The ditch that defines the enclosure shows clearly on the north, east and west sides, but is poorly defined on the west side. There is no obvious entrance. It is a cropmark only, with no earthwork or other surface indication. It lies on a very gentle, almost level, east-facing slope at 130m above sea level. In 2005, it was under improved pasture.

K Murphy 10 October 2005

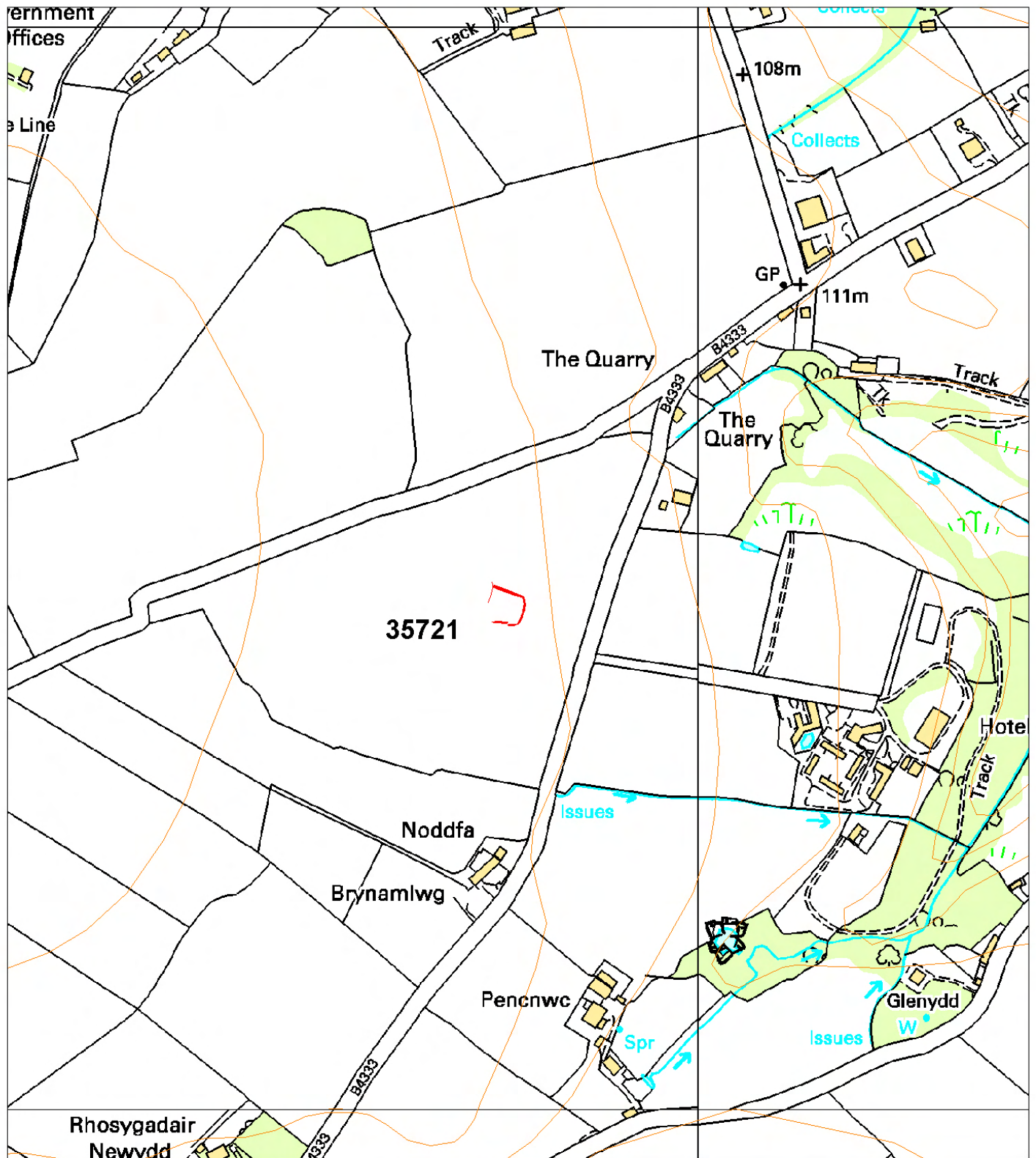




Aerial photograph RCAHMW Crown Copyright © reference 95-cs-1726.



Ground photograph looking over site of cropmark enclosure.



This map is reproduced from the Ordnance Survey map by the National Assembly for Wales with the permission of The Controller of Her Majesty's Stationery Office. Crown Copyright. All rights reserved.  
Unauthorised reproduction infringes Crown Copyright and may lead to prosecution and civil proceedings.  
Licence No. GD 272221

Scale: 1:500

# 35722 CROES Y BRYN

PRN 35722 NGR SN29045132

SITE NAME CROES-Y-BRYN

SITE TYPE DEFENDED ENCLOSURE FORM Cropmark

PERIOD Iron Age; Roman CONDITION D

SITE STATUS

## DESCRIPTION

A bivallate, rectangular cropmark enclosure is visible on aerial photographs. There are no earthworks or other surface evidence for this site. It lies towards the corner of a field, but running under a lane and into a field to the north, on a gentle northwest facing slope, with wide views to the east and north. A house built in the corner of the field in 1995 overlies the southeast corner of the site. The site is defined by 'concentric' cropmark ditches, enclosing a rectangular area. The interior of the site measures approximately 43m north - south, and is probably of a similar dimension east - west. The ditches are closely set, about 6m apart. A possible entrance lies roughly midway along the west side. The owner of the house reported that they had to dig down c. 4m in the area of the porch in order to get a hard foundation - this is presumably over one of the ditches. In 2005, the field in which the sites lies was under improved pasture.

K Murphy 15 November 2005

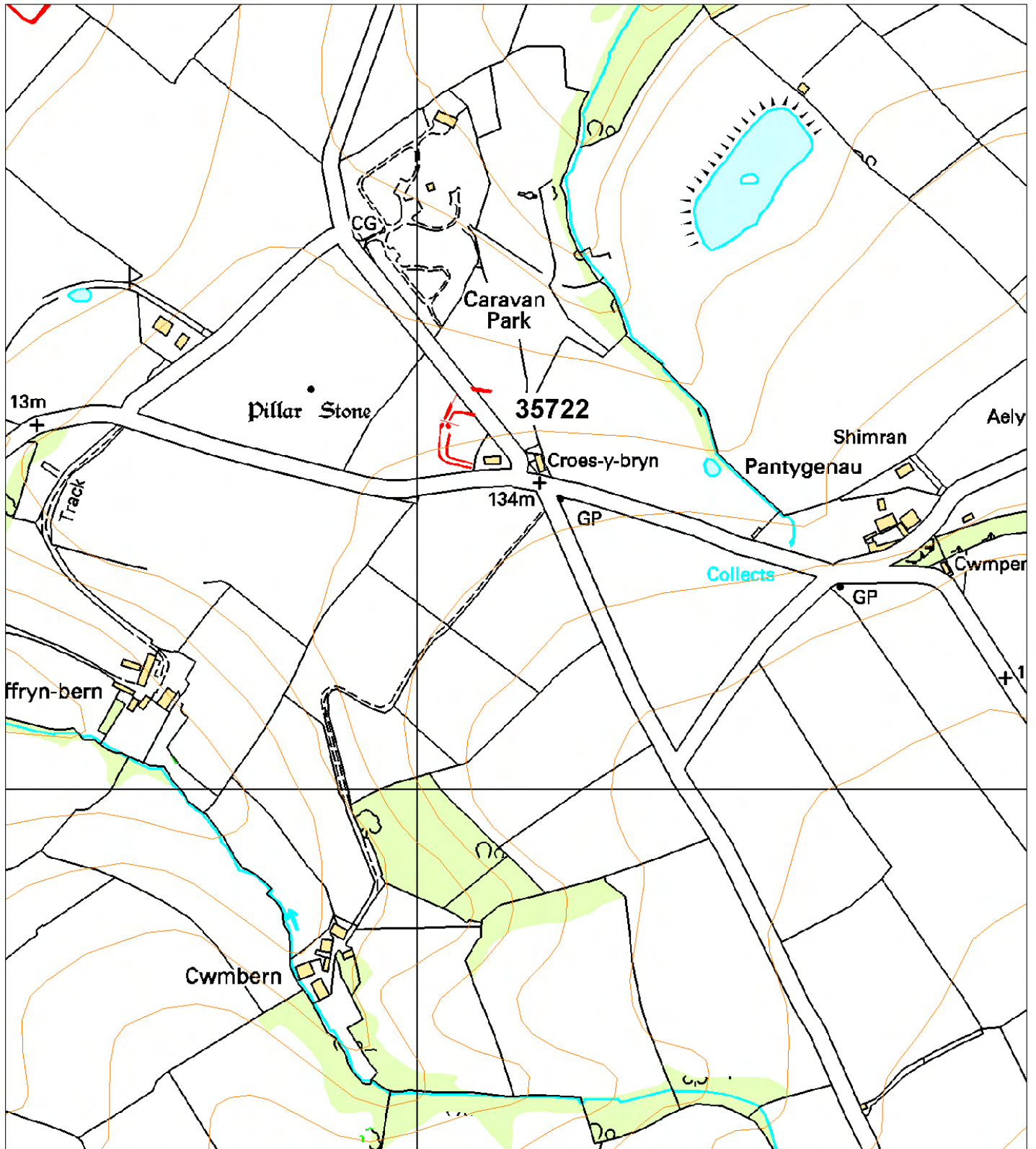




Aerial photograph RCAHMMW Crown Copyright © reference 95-cs-1738.



Ground photograph looking over site of cropmark enclosure.



This map is reproduced from the Ordnance Survey map by the National Assembly for Wales with the permission of The Controller of Her Majesty's Stationery Office. Crown Copyright. All rights reserved. Unauthorised reproduction infringes Crown Copyright and may lead to prosecution and civil proceedings. Licence No. GD 272221

Scale: 1:500

# 52061 BIGNI

PRN 52061 NGR SN20755131

SITE NAME BIGNI

SITE TYPE DEFENDED ENCLOSURE FORM Cropmark

PERIOD Iron Age; Roman CONDITION D

SITE STATUS

## DESCRIPTION

A small cropmark enclosure lies on gentle northwest-facing coastal slope at 120m above sea level, with views over Cardigan Bay to the north. It is a cropmark site with no earthwork or other surface evidence. It is sub-rectangular in shape, approximately 40m northwest - southeast and 30m southwest - northeast, and defined by a cropmark ditch. The southwest side lies under a hedge-bank. There is no obvious entrance. In 2005, the site was under improved pasture.

K Murphy 15 November 2005

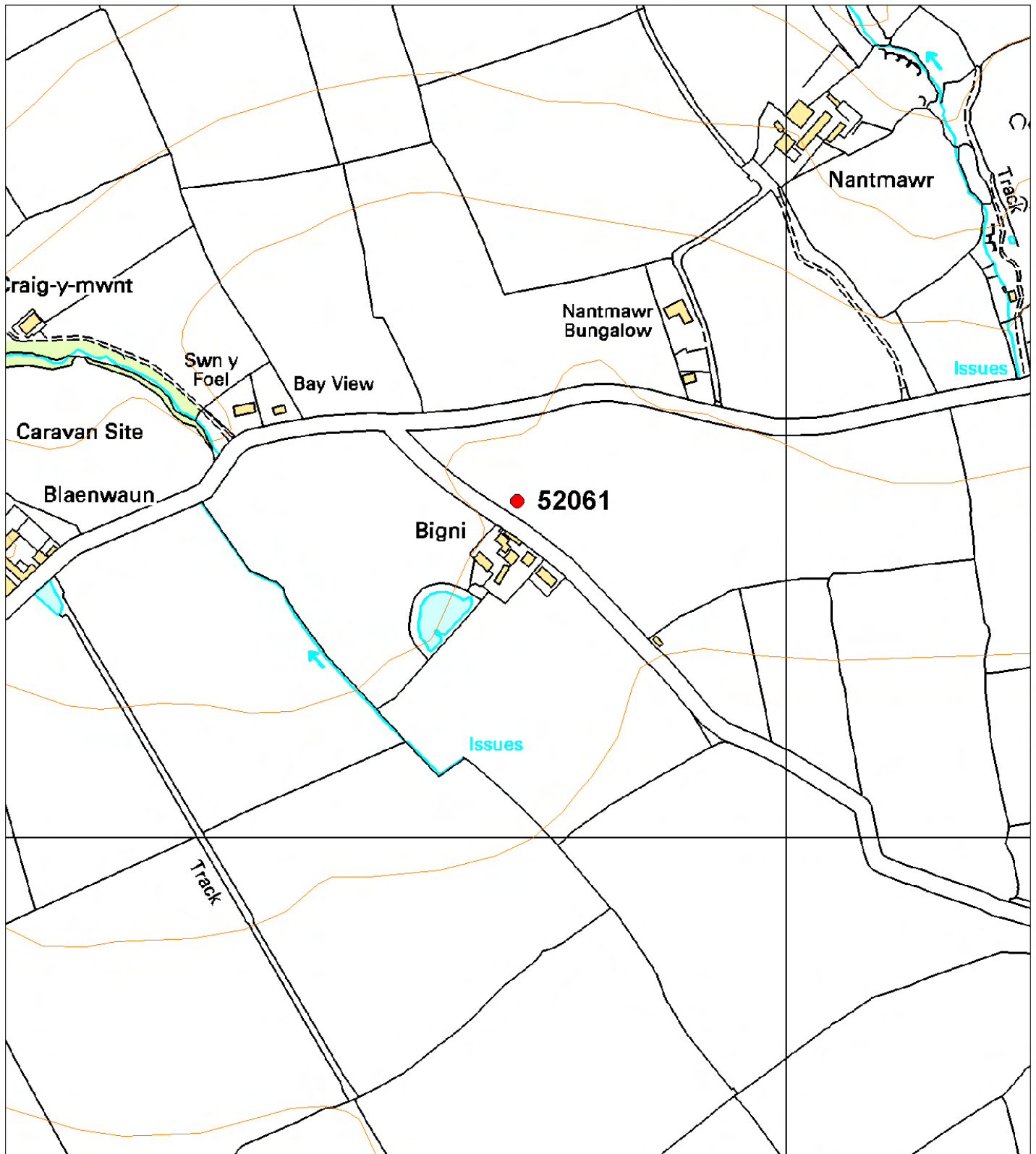




Aerial photograph RCAHMW Crown Copyright © reference 2003-cs-1447.



Ground photograph looking over site of cropmark enclosure.



This map is reproduced from the Ordnance Survey map by the National Assembly for Wales with the permission of The Controller of Her Majesty's Stationery Office. Crown Copyright. All rights reserved.  
Unauthorised reproduction infringes Crown Copyright and may lead to prosecution and civil proceedings.  
Licence No. GD 272221

Scale: 1:500

## 52063 TRE-CEFN UCHAF

PRN 52063 NGR SN20465043

SITE NAME TRE-CEFN-UCHAF

SITE TYPE DEFENDED ENCLOSURE FORM Cropmark

PERIOD Iron Age CONDITION D

SITE STATUS

DESCRIPTION

Located close to the crest of a rounded hill at 140m above sea level, Tre-cefn-uchaf cropmark is only apparent on aerial photographs. To the southwest through to the southeast and northeast the land falls gently but steadily away from the site, but to northwest the land rises gently a few metres onto the hilltop. The site is cut across by hedge-banks and is assumed to lie in four separate fields, but is only visible on aerial photographs in one. The site is defined by a curving cropmark ditch, which if projected would give a diameter of approximately 60m. The ditch seems to be segmented rather than continuous, but this may be a reflection of the cropmark quality. Other fainter cropmark ditches lie in the same field to the southwest. Although not certain, the cropmark is probably part of a defended enclosure. In 2005, two of the fields were under improved pasture and two under arable cultivation.

K Murphy 15 November 2005

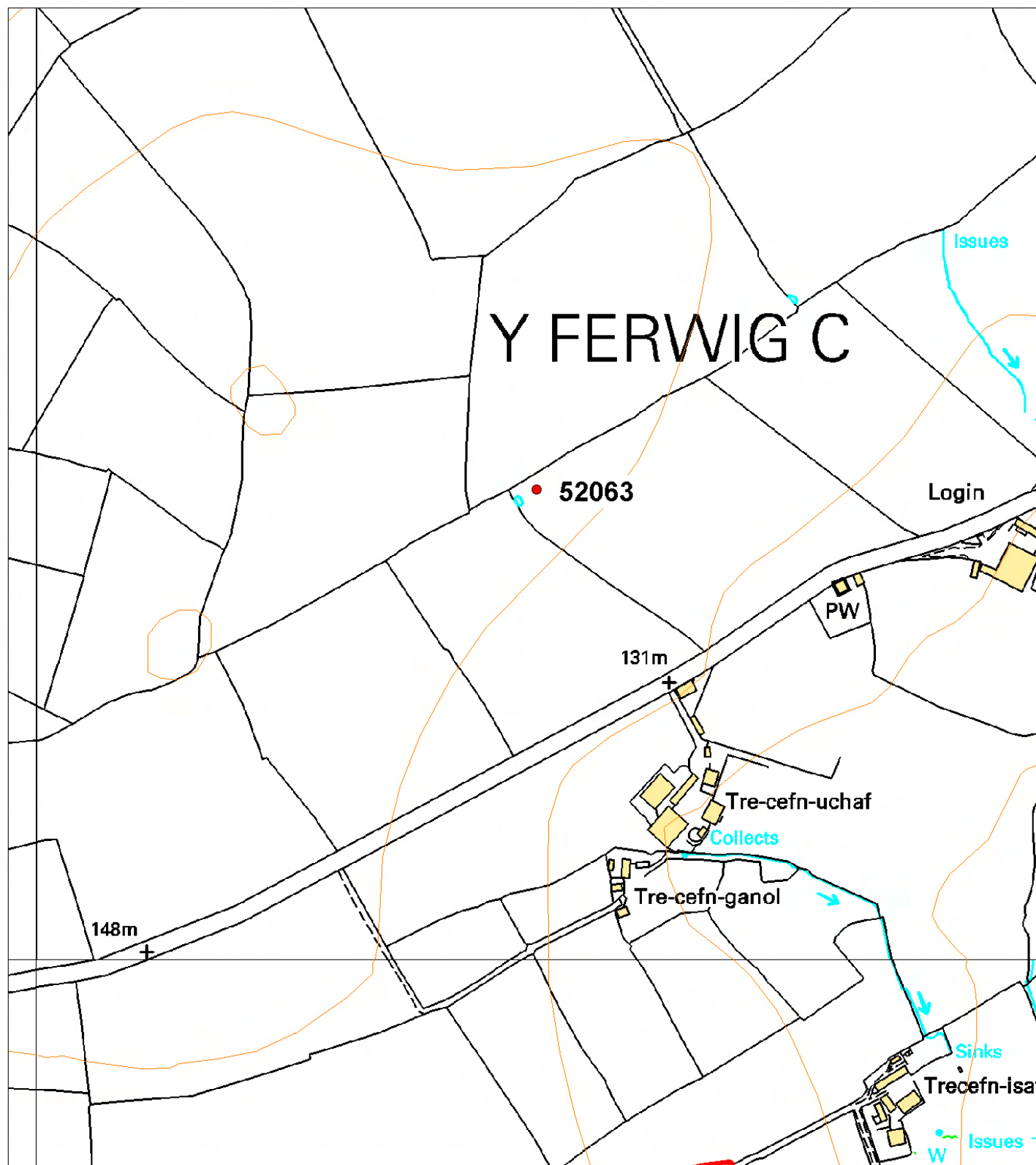




Aerial photograph RCAHMW Crown Copyright © reference 2003-cs-1452.



Ground photograph looking over site of cropmark enclosure.



This map is reproduced from the Ordnance Survey map by the National Assembly for Wales with the permission of The Controller of Her Majesty's Stationery Office. Crown Copyright. All rights reserved. Unauthorised reproduction infringes Crown Copyright and may lead to prosecution and civil proceedings. Licence No. GD 272221

Scale: 1:500

# 56244 FFRWDWENITH

PRN 56244 NGR SN22935064

SITE NAME FFRWDWENITH

SITE TYPE DEFENDED ENCLOSURE FORM Cropmark

PERIOD Iron Age: Roman CONDITION D

SITE STATUS

## DESCRIPTION

Discovered by aerial photography in 2005, Ffrwdwenith is a small, bivallate, rectangular, cropmark enclosure. It lies on a very gentle north-facing slope, a short distance north of the highest point of a rounded high point. It is a cropmark site with no earthwork or other surface indication. It measures approximately 60m by 40m. It is bisected by a lane. The bivallate enclosure ditches show best in the field to the west of the lane, with two ditches on the west, north and south sides clearly visible on aerial photographs. The northwest corner has a sharp right angle, the southwest corner is more rounded. The ditches are about 10m apart. Only a single ditch shows on the field to the east, but the lane may obscure the second ditch. An entrance may lie midway along the east side, but this is not certain. In 2005, the site was under a barley crop.

K Murphy 10 October 2005

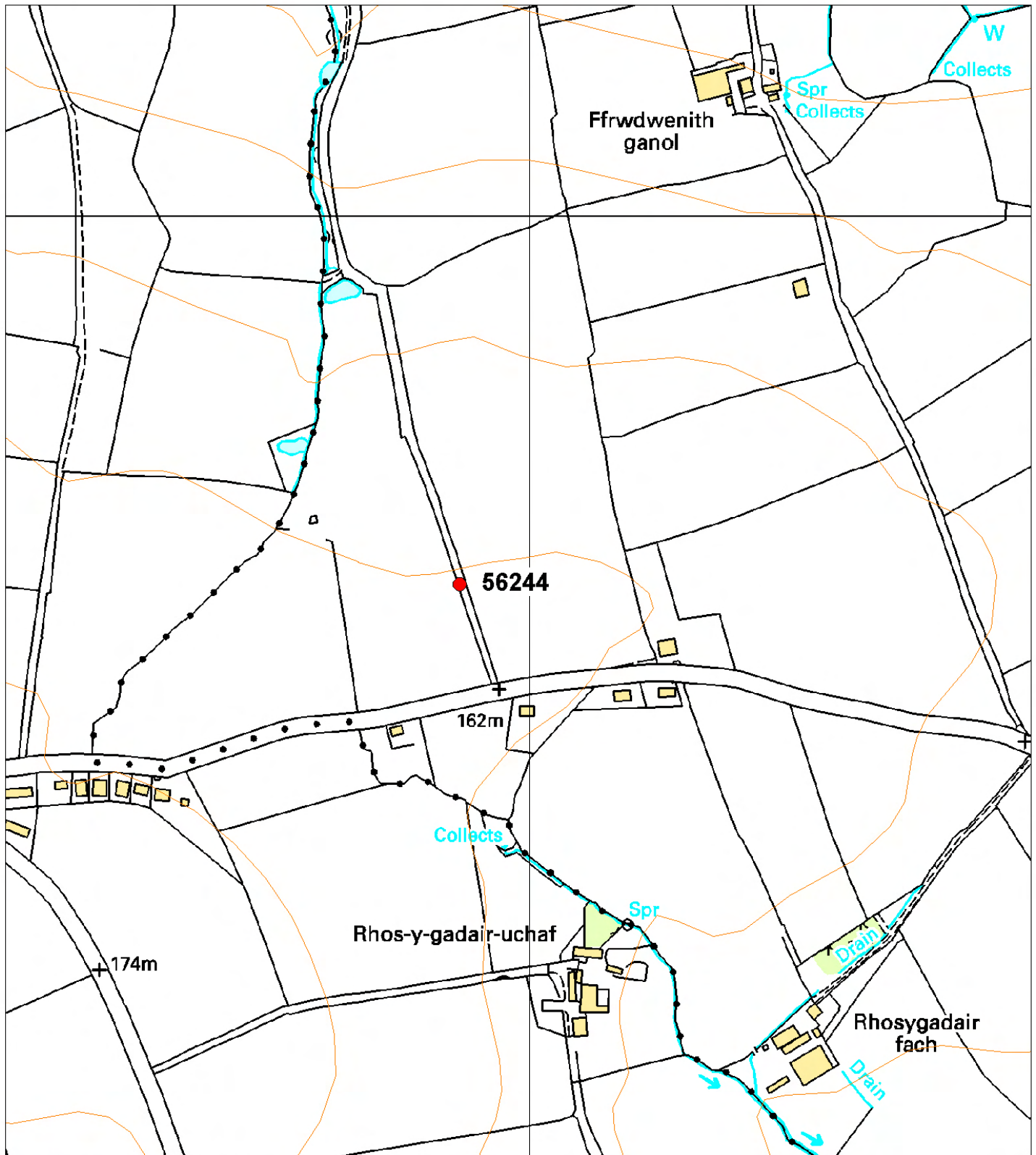




Aerial photograph RCAHMW Crown Copyright © reference 2005-cs-1497.



Ground photograph looking over site of cropmark enclosure.



This map is reproduced from the Ordnance Survey map by the National Assembly for Wales with the permission of The Controller of Her Majesty's Stationery Office. Crown Copyright. All rights reserved. Unauthorised reproduction infringes Crown Copyright and may lead to prosecution and civil proceedings. Licence No. GD 272221

Scale: 1:500