

Archaeoleg Cambria
Neuadd y Sir
Stryd Caerfyrddin
Llandeilo
Sir Gaerfyrddin
SA19 6AF

Ffon 01558 823131
Ffacs 01558 823133
Ebost:
cambria@cambria.org.uk



Cambria Archaeology
The Shire Hall
Carmarthen Street
Llandeilo
Carmarthenshire
SA19 6AF

Telephone 01558 823131
Fax 01558 823133
Email:
cambria@cambria.org.uk

TIR GOFAL CALL OUT REPORT

**Prepared for:
Trehill Farm**



Wireless Telegraph Station near Philbeach Farm, Marloes

**Tir Gofal Reference No
W/13/5306**

**Project Record No. 52266
Cambria Report No. 2007/12**

**Prepared by
Alice Pyper**

CONTENTS

Summary	3
Introduction	3
Methodology	3
Description	3
Wireless Telegraph Hut	4
Guardsman's Hut	4
Condition	5
Management Recommendations	5
References	6
Archive Deposition	6
Illustrations	7
Figure 1: Location map	7
Figure 2: Sketch plan of Wireless Telegraph Hut	8
Figure 3: Sketch plan of Guardsman's Hut	9
Figure 4: Plan of Wireless Telegraph Hut	10
Figure 5: Plan of Guardsman's Hut	11
Figure 6: Overall Plan of Wireless Telegraph Station	12
Photographs	13
APPENDIX	19
Photograph catalogue	19

Summary

A rapid survey was carried out of two 20th century military structures surviving on the Philbeach farm holding, which forms part of the larger farm of Trehill. Although surviving largely intact these buildings are in a poor condition, and their long term future is uncertain. A photographic survey was carried out of the exteriors and, where access was possible, of the interiors of the two buildings. The survey has been carried out as part of the Tir Gofal scheme to obtain as detailed a record as possible at the time and in order to assess the management concerns for the buildings.

Recommendations for further recording when more access is available are made within the report.

Introduction

The buildings consist of two British Concrete Federation huts set on high ground less than a kilometre to the northeast of Dale Airfield. The site is centred on National Grid Reference SM80610792 (Figure 1). The buildings were studied as part of Roger Thomas' 'Survey of 19th and 20th Century Military Buildings of Pembrokeshire' of 1994 and the site has been recorded on the accompanying database.

The site is a Wireless Telegraph Station in use when the Royal Navy occupied Dale Airfield in 1943. The complex now consists of two buildings aligned north-south, three masts were also recorded to be part of the complex, however no trace of these was observed; the field in which the structures were located is cultivated and the current landowner has no knowledge of their location. The two buildings lie just north of the public road, accessed by an area of concrete hardstanding (Plate 1). The smaller of the two buildings is recorded as a Guardman's Hut and has been given a Primary Record Number (PRN) 28643, the larger is the Wireless Telegraph Hut (PRN 28642).

The buildings have remained in use as part of Philbeach farm. At the time of the survey both buildings were used for storage and the interiors were largely inaccessible due to the large quantity of materials stored within them.

Methodology

The method of survey was based on the RCHME level 2 survey and comprises a photographic record of all the elevations, internal where accessible and external elevations (RCHME 1996). Photographs of details were taken where appropriate. Plans showing the locations of all photographs taken can be found at the end of this report (figures 4, 5 & 6). The photographic record is supplemented with sketch plans of the buildings and a short written description (see figures 2 & 3). Photographs were taken using Single Lense Reflex cameras; black and white 35mm film and colour digital.

Description

The two structures are essentially of the same construction, both are British Concrete Federation huts, built of pre-cast concrete and reinforced with steel rods. The huts are built in sections with concrete posts and beams and concrete panels between. Internally the concrete panels are lined with hollow clay bricks laid on edge (Plate 2). The huts are built on brick plinths, terraced out to provide a level platform on the gentle north facing slope.

The huts have concrete, depressed gable roofs which appear to have been painted over with several coats of tar. The roof structure is constructed of closed concrete reinforced trusses with the occasional truss having an exposed steel threaded rod at the centre which, it is presumed, is to provide tension. Piercing the roof trusses are a series of steel electric conduits which run down the length of the buildings branching off in places to run services to various parts of the building (Plate 3).

Wireless Telegraph Hut; PRN 28642 (RT Site No. 98/001). Figure 2.

This hut is rectangular in plan and 29 bays long (Plate 4). No internal wall divisions remain although scars on the floor surface indicate partitions, however the quantity of storage materials obscured most of the interior. The flooring, where visible appears to be made up of concrete overlaid with asphalt.

A large entrance at the southern end has been inserted into the building and the remains of an 'up and over' door mechanism survives (Plate 5). The entrance is placed east of centre in the south elevation.

A further, original, doorway survives at the northern end of the east elevation, reached by a series of brick and concrete external steps (Plate 6). A wooden plank door with latch lies on the floor of the hut – and although this is clearly the last door to be hung at the doorway, it is unlikely to be the original door.

Pairs of metal, side-hung casement windows punctuate the long elevations (Plate 7). Each casement has 4 panes of glass and the frames have been painted bottle green. There are no openings at the northern end of the building although there is a wider central panel to accommodate a doorway.

Guardsman's Hut PRN 28643; (RT Site No. 98/002). Figure 3.

This is the smaller of the two structures and lies adjacent to, but set back from the public road. The hut is 9 bays long, no internal divisions survive (Plate 8).

Like the Telegraph Hut, the Guardsman's hut has pairs of windows, which lie in all four elevations. None of the original windows survive, and wooden frames have been inserted and corrugated Perspex attached.

The doorway, which lies in the east elevation, does not retain its original door, a wooden plank and batten door now serves.

Full access to the interior was impeded by the large quantity of timber currently being stored within the building.

The internal elevations have been painted blue below window level and there are traces of green around the doorway. Latterly the interior has been painted over with white paint (Plate 9).

Cabling pierces the east wall on the north side of the door, and on the exterior an electrical distribution board is located (Plate 10), presumed to have an isolator switch for the power supply.

Condition

As is common with pre-cast reinforced concrete buildings which were constructed to only last for the duration of the war these buildings are showing signs of deterioration. The reinforcing rods which run through the structural posts are corroding and consequently the rigid concrete casing is blowing apart (Plate 11). Whilst the buildings may remain standing for some years to come, the active corrosion of the structural members is cause for concern. Whilst it is possible for reinforced concrete structures to be repaired and conserved this would entail specialist knowledge and therefore is likely to be expensive.

Assessment of Significance

Pembrokeshire has a rich and varied military history which spans over 2500 years. Whilst those defensive structures of great antiquity have long been recognised as being part of the nation's heritage and therefore worthy of protection and conservation, 'modern' structures such as those which survive at Philbeach Farm are part of a body of evidence which has only recently been recognised as historically significant. Many of these 20th century military structures have been viewed as eyesores and cleared away without regard for their intrinsic historic value. It is true that many of these buildings have little or no great architectural or aesthetic value, however they are the legacy of one of the most terrible conflicts in recent history and one which had widespread effects across the whole country. It is in the light of this context that each complex, building or structure should be considered and its significance evaluated.

The wireless telegraph station at Philbeach Farm has a companion telegraph station which survives at Fopson Farm (SM79950902; figure 1); these buildings are apparently in a very poor condition, somewhat worse than those at Philbeach Farm (Roger Thomas pers. com.). Generally British Concrete Federation buildings, like those found at these two complexes are not common in Pembrokeshire, although they are more widespread elsewhere in the United Kingdom.

Although it is not thought that these buildings are of national importance and therefore worthy of listing (Roger Thomas pers. com.) they are an important part of Pembrokeshire's military history.

Recommendations

In terms of their future; ideally these buildings should be retained and reused. Plans to incorporate them into a new farmstead development proposed by the land owner might ensure their future survival and would be worthy of consideration, although this decision will ultimately lie with the local planning authority.

However, if there is no alternative but demolition of this complex then Cambria Archaeology would strongly recommend that further recording should be undertaken when the buildings are emptied in order to record those areas where access was not possible.

The record should pay particular attention to:

- identifying subdivisions or partitions within the buildings
- the layout of electrical conduits
- internal decoration and paint schemes

- external camouflage paint schemes
- wall surfaces should be examined for graffiti or wall art

References

Brown, I *et al.* 1995. *20th Century Defences in Britain. An Introductory Guide.* Council for British Archaeology: Practical Handbooks in Archaeology No. 12

R.C.H.M.E. 1996. *Recording Historic Buildings. A Descriptive Specification. 3rd edition.* R.C.H.M.E.

Thomas, R J C. 1994 *Survey of 19th and 20th Century Military Buildings of Pembrokeshire* Unpublished report

Archive Deposition

The archive for this project will be deposited at the National Monuments Record (NMR). The report and copies of the photographic record will be deposited at the Regional Historic Environment Record offices at Cambria Archaeology, Shire Hall, 8 Carmarthen Street, Llandeilo, Carmarthenshire.



Figure 1 – Map showing locations of the Wireless Telegraph Stations at Philbeach Farm and its companion station at Fopston Farm.

This map is reproduced from the Ordnance Survey map by the National Assembly for Wales with the permission of Ordnance Survey on behalf of the Controller of her Majesty's Stationery Office, Crown copyright. All rights reserved. Unauthorised reproduction infringes Crown copyright and may lead to prosecution or civil proceedings. License number: 100018813

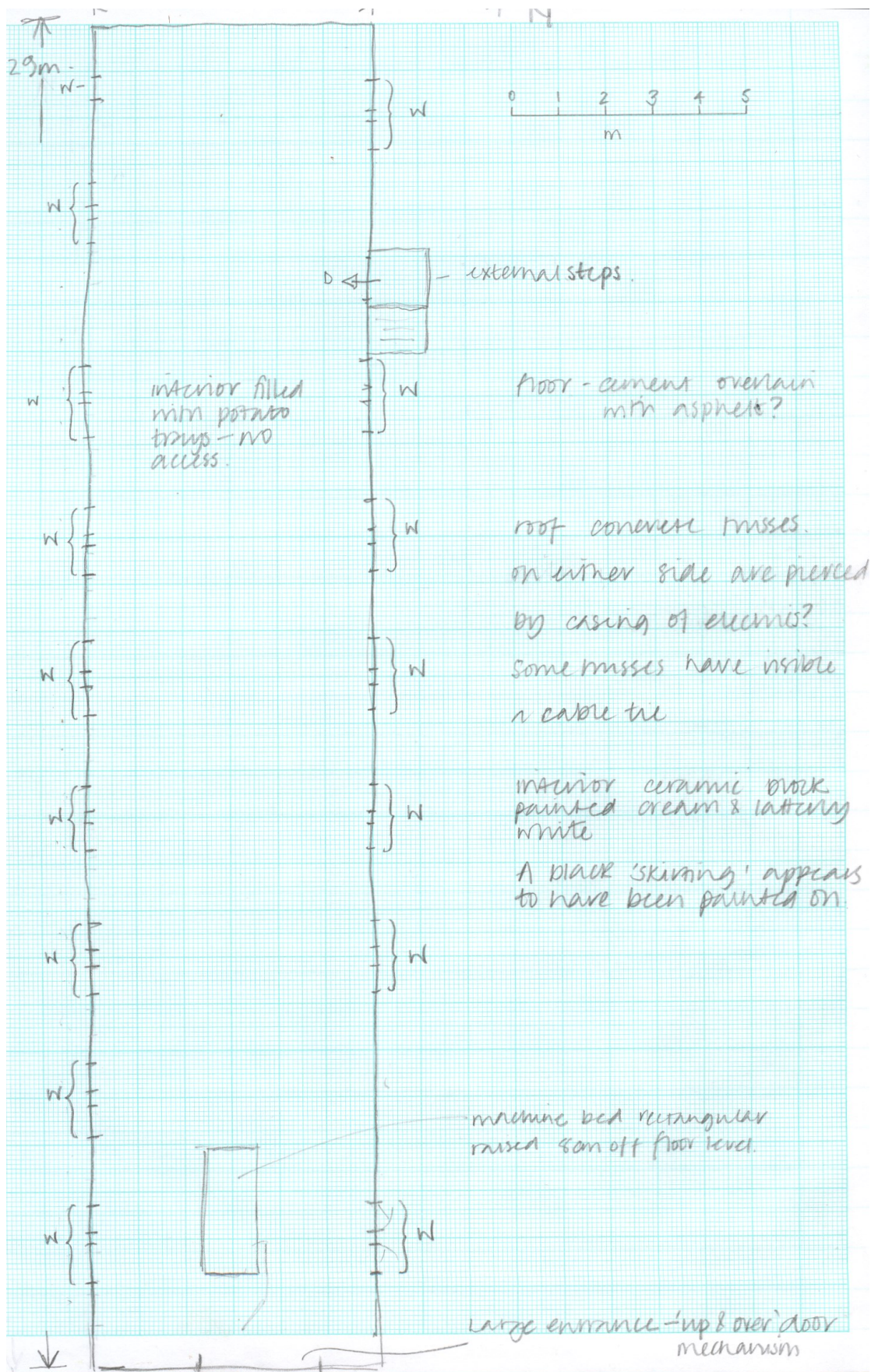


Figure 2 - Annotated sketch plan of Wireless Telegraph Hut PRN 28642 (RT Site No. 98/001)

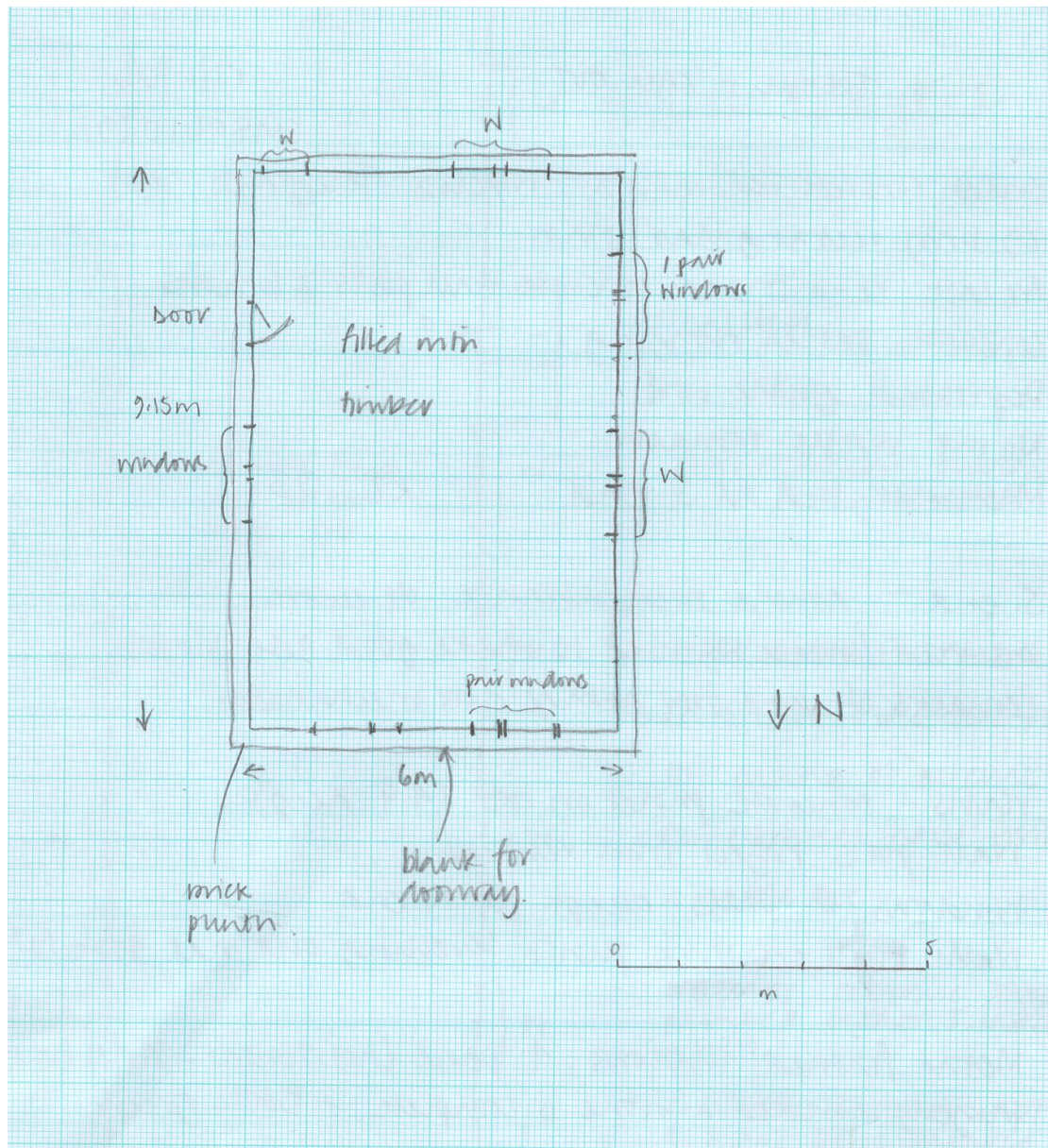


Figure 3 - Annotated sketch plan of Guardsman's Hut PRN 28643 (RT Site No. 98/002)

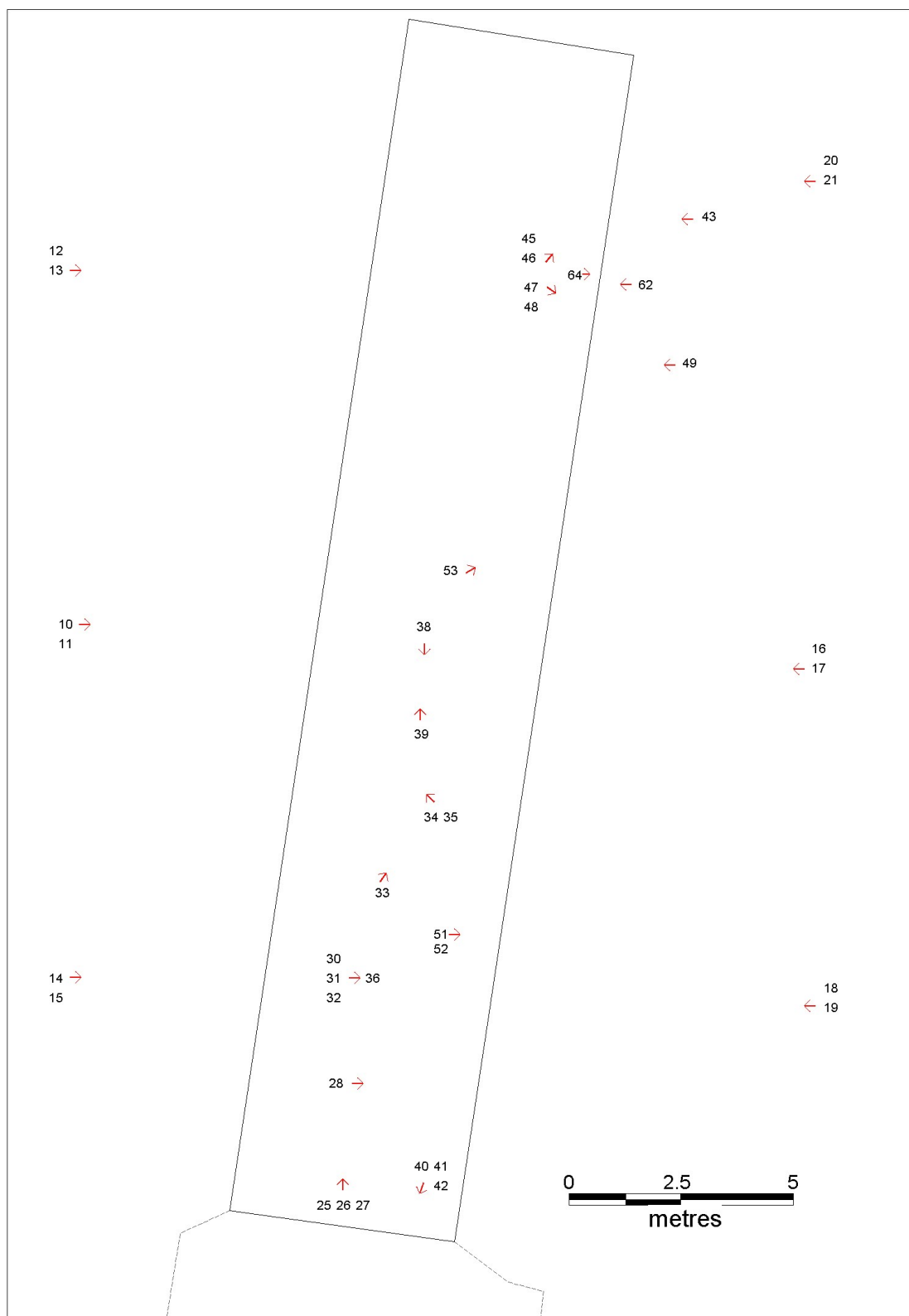


Figure 4 – Plan of Wireless Telegraph Hut (PRN 28642) showing locations and directions of photographs, with the frame number.

This map is reproduced from the Ordnance Survey map by the National Assembly for Wales with the permission of Ordnance Survey on behalf of the Controller of her Majesty's Stationery Office, Crown copyright. All rights reserved. Unauthorised reproduction infringes Crown copyright and may lead to prosecution or civil proceedings. License number: 100018813

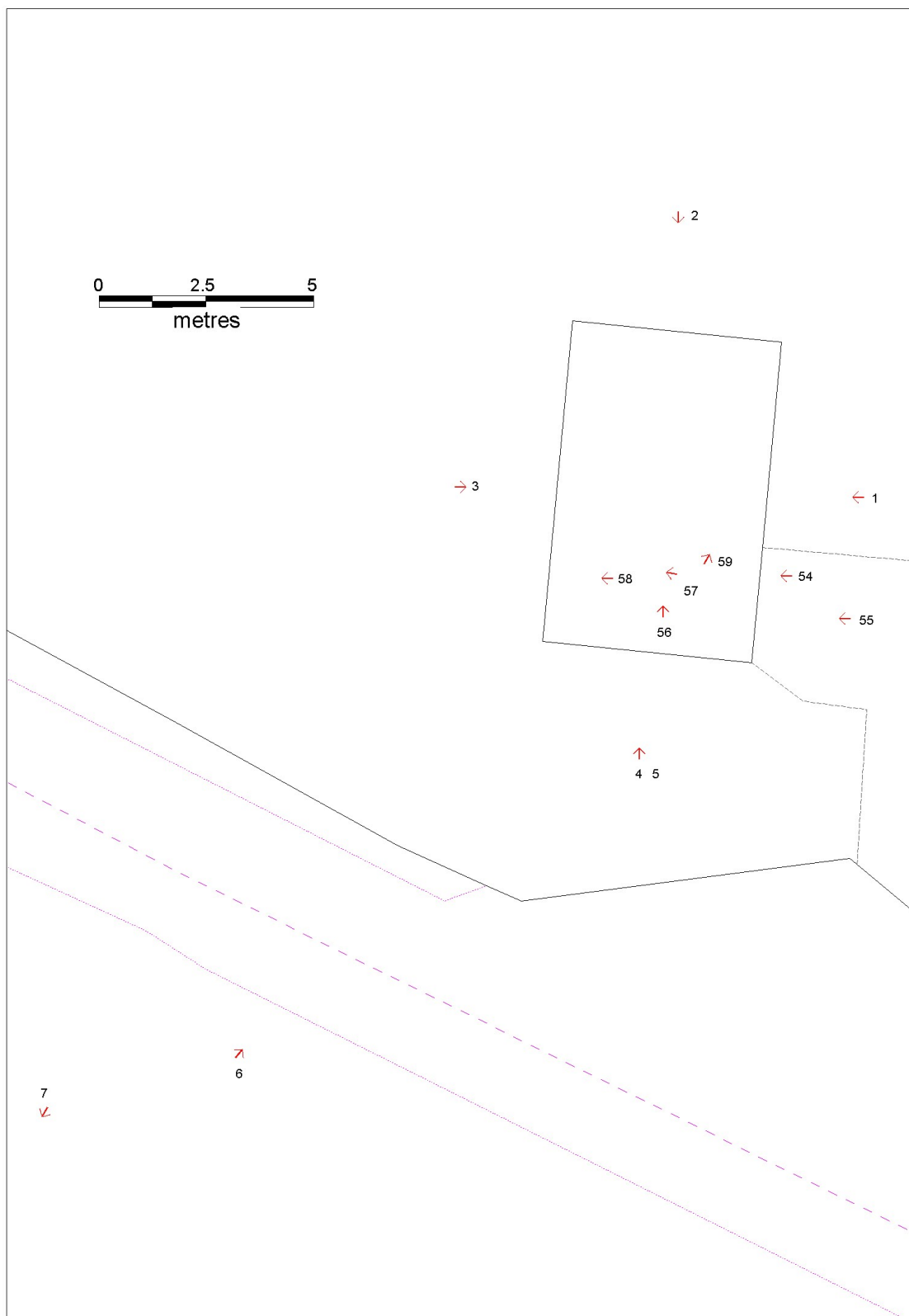


Figure 5 – Plan of Guardsman's Hut (PRN 28643) showing locations and directions of photographs, with the frame number.

This map is reproduced from the Ordnance Survey map by the National Assembly for Wales with the permission of Ordnance Survey on behalf of the Controller of her Majesty's Stationery Office, Crown copyright. All rights reserved. Unauthorised reproduction infringes Crown copyright and may lead to prosecution or civil proceedings. License number: 100018813

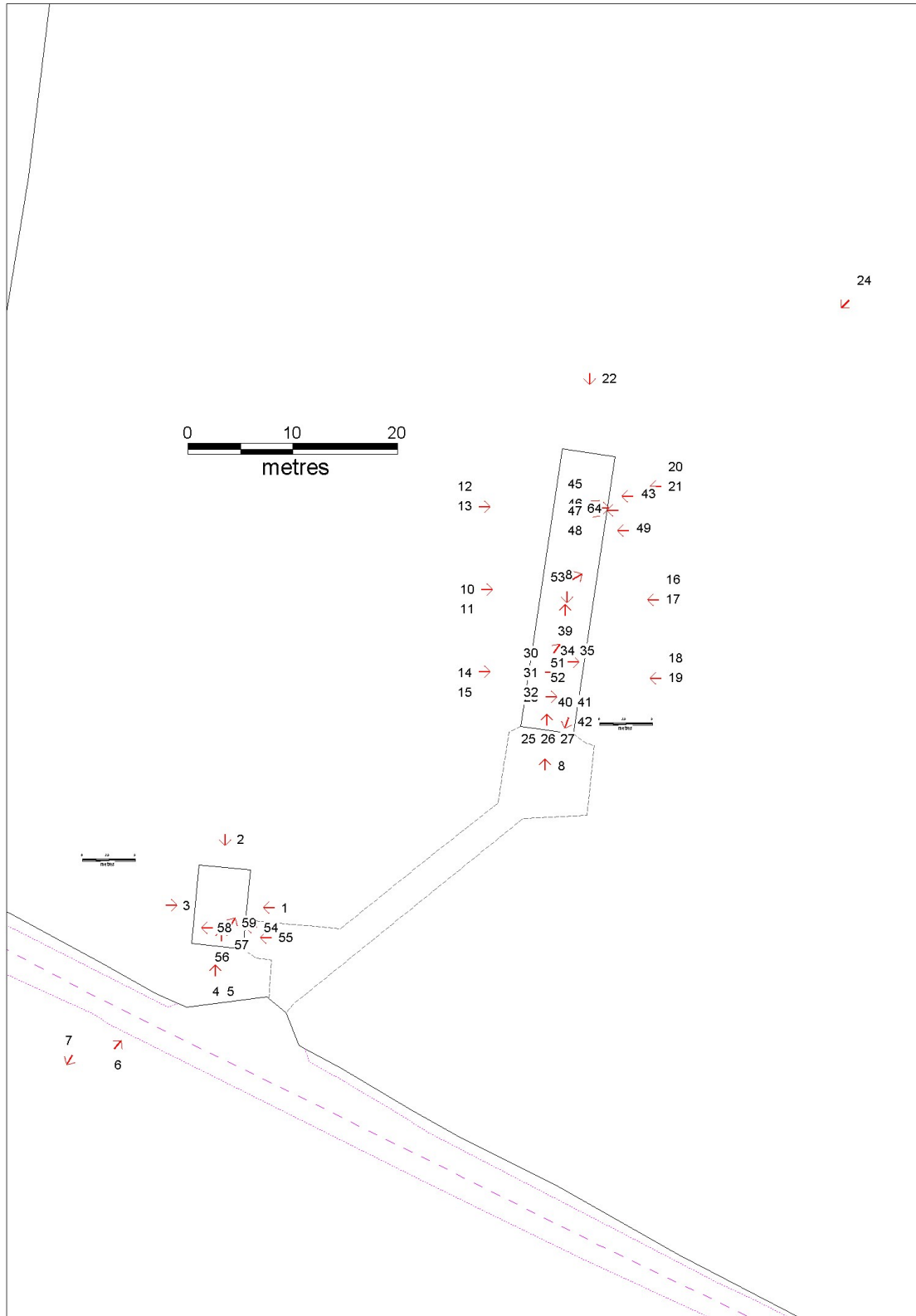


Figure 6 – Overall Plan of Wireless Telegraph Station (PRNs 28642 & 28643) showing locations and directions of photographs, with the frame number.

This map is reproduced from the Ordnance Survey map by the National Assembly for Wales with the permission of Ordnance Survey on behalf of the Controller of her Majesty's Stationery Office, Crown copyright. All rights reserved. Unauthorised reproduction infringes Crown copyright and may lead to prosecution or civil proceedings. License number: 100018813



Plate 1 - General view of Wireless Telegraph Station; Guardman's hut (PRN 28643) lies in the foreground.



Plate 2 - Interior of Wireless Telegraph Hut (PRN 28642) showing interior clay blockwork and concrete roof trusses.



Plate 3 – Interior of Wireless Telegraph Hut (PRN 28642), showing electrical conduits, also note steel tensioning in two of the concrete roof trusses.



Plate 4 – Eastern elevation of Wireless Telegraph Hut (PRN 28642)



Plate 5 – large inserted entrance in Wireless Telegraph Hut (PRN 28642)



Plate 6 – Doorway and external steps in the eastern elevation of Wireless Telegraph Hut (PRN 28642)



Plate 7 – Exterior detail of casement windows in the eastern elevation of the Wireless Telegraph Hut (PRN 28642)



Plate 8 – Eastern elevation of the Guardsman's Hut (PRN 28643)



Plate 9 – Interior of the Guardsman's Hut, note the blue paint scheme which shows below the window.



Plate 10 – Doorway and exterior electrical distribution board on the eastern elevation of the guardsman's hut



Plate 11 – showing corrosion of steel reinforcing rods which run throughout the buildings.

APPENDIX**Photograph catalogue (Colour Digital B+W film)****Ground photographs of Wireless Telegraph Station at Philbeach Farm (SM80610792)****Project Record Number 52266****Photographed on the 17/11/2006**

PRN	Neg. Ref. No. (Colour)	Neg Ref No. (B+W)	Description
28643	DAT2006-96.01	2,3,4	General view of east facing elevation of guardman's hut
28643	DAT2006-96.02	6,7,8	General view of north facing elevation of guardman's hut
28643	DAT2006-96.03	9,10,11	General view of west facing elevation of guardman's hut
28643	DAT2006-96.04	12	General view of south facing elevation of guardman's hut
28643	DAT2006-96.05		General view of south facing elevation of guardman's hut
28642	DAT2006-96.06	13,14	General view of the transmitter station
	DAT2006-96.07		General view of Dale airfield
28642	DAT2006-96.08		General view of south facing elevation of wireless telegraph hut
28642	DAT2006-96.09	15,16,17	General view of south facing elevation of wireless telegraph hut
28642	DAT2006-96.10	18,19,20,21	General view of west facing elevation of wireless telegraph hut
28642	DAT2006-96.11		General view of west facing elevation of wireless telegraph hut
28642	DAT2006-96.12	25,26,27	General view of west facing elevation of wireless telegraph hut (northern section)
28642	DAT2006-96.13		General view of west facing elevation of wireless telegraph hut (northern section)
28642	DAT2006-96.14	22,23,24	General view of west facing elevation of wireless telegraph hut (southern section)
28642	DAT2006-96.15		General view of west facing elevation of wireless telegraph hut (southern section)
28642	DAT2006-96.16	34,35,36	General view of east facing elevation of wireless telegraph hut
28642	DAT2006-96.17		General view of east facing elevation of wireless telegraph hut
28642	DAT2006-96.18		General view of east facing elevation of wireless telegraph hut (southern section)
28642	DAT2006-96.19		General view of east facing elevation of wireless telegraph hut (southern section)
28642	DAT2006-96.20		General view of east facing elevation of wireless telegraph hut (northern section)
28642	DAT2006-96.21		General view of east facing elevation of wireless telegraph hut (northern section)
28642	DAT2006-96.22	31,32,33	General view of north facing elevation of wireless telegraph hut
28642	DAT2006-96.23		General view of north facing elevation of wireless telegraph hut
28642	DAT2006-96.24		General view of wireless telegraph hut from the northeast
28642	DAT2006-96.25		Machine bed located at south end of the telegraph hut
28642	DAT2006-96.26		Machine bed located at south end of the telegraph hut
28642	DAT2006-96.27		Machine bed located at south end of the telegraph hut
28642	DAT2006-96.28		Interior detail of metal casement windows and hollow brick lining
28642	DAT2006-96.30		Interior detail of metal casement windows and hollow brick lining
28642	DAT2006-96.31		Interior detail of metal casement windows and hollow brick lining
28642	DAT2006-96.32		Interior detail of metal casement windows and hollow brick lining
28642	DAT2006-96.33		General view of interior of telegraph hut - looking northeast
28642	DAT2006-96.34		Concrete roof trusses and electrical conduits.
28642	DAT2006-96.35		Concrete roof trusses and electrical conduits.
28642	DAT2006-96.36		Interior detail of metal casement windows and hollow brick lining
28642	DAT2006-96.37		Interior detail of metal casement windows and hollow brick lining

28642	DAT2006-96.38		General view of interior of the telegraph, looking south
28642	DAT2006-96.39		General view of interior of the telegraph, looking north
28642	DAT2006-96.40		View of concrete road serving telegraph hut, taken from its entrance looking southwest.
28642	DAT2006-96.41		Inserted doorway into telegraph hut.
28642	DAT2006-96.42		Inserted doorway into telegraph hut.
28642	DAT2006-96.43		Doorway and external steps in the east wall (north end) of the telegraph hut
28642	DAT2006-96.44		Doorway and external steps in the east wall (north end) of the telegraph hut
28642	DAT2006-96.45		Interior of doorway in the east wall (north end) of the telegraph hut
28642	DAT2006-96.46		Interior of doorway in the east wall (north end) of the telegraph hut
28642	DAT2006-96.47		Detail of metal casement windows in the east wall of telegraph hut
28642	DAT2006-96.48		Detail of metal casement windows in the east wall of telegraph hut
28642	DAT2006-96.49	28,29,30	Detail of metal casement windows in the east wall of telegraph hut
28642	DAT2006-96.50		Detail of metal casement windows in the east wall of telegraph hut
28642	DAT2006-96.51		Detail of hollow brickwork and paint finishes within the telegraph hut
28642	DAT2006-96.52		Detail of hollow brickwork and paint finishes within the telegraph hut
28642	DAT2006-96.53		Interior wall finishes of the wireless telegraph hut.
28643	DAT2006-96.54		Switch/fuse box? which is located outside the door of the guardsman's hut.
28643	DAT2006-96.55		Doorway and switch outside the guardsmans hut.
28643	DAT2006-96.56	5	Interior of the guardsman's hut, looking north
28643	DAT2006-96.57		Internal roof of guardsman's hut, showing electrical conduits.
28643	DAT2006-96.58		Interior of guardsman's hut, showing windows.
28643	DAT2006-96.59		Interior of guardsman's hut, showing windows.
28643	DAT2006-96.60		General view of north facing elevation of guardman's hut
28643	DAT2006-96.61		General view of west facing elevation of guardman's hut
28642	DAT2006-96.62		Door inside doorway of telegraph hut.
28642	DAT2006-96.63		Door inside doorway of telegraph hut.
28642	DAT2006-96.64		External concrete steps of telegraph hut.

